

**FW22**



# BASKETBALL

**FW22 TEAM BASKETBALL**



**@ADIDASFBALLUS @ADIDASHOOPS @ADIDASFOOTBALL @ADIDASBASEBALL @ADIDASVBALL @ADIDASLACROSSE**

# CUSTOMER OPERATIONS INFORMATION

## 877-409-0628

THE NUMBER ABOVE WILL BE THE SINGLE CUSTOMER SERVICE CONTACT NUMBER FOR ORDERING ASSISTANCE FOR ADIDAS AND ADIDAS LICENSEES.

VISIT [ADIDAS-TEAM.COM](http://ADIDAS-TEAM.COM)

## TEAM SALES REPS

### JIM WATKINS

KEY ACCOUNT MANAGER – 431 SPORTS  
615-585-3460  
[JIM.WATKINS@ADIDAS.COM](mailto:JIM.WATKINS@ADIDAS.COM)  
KY, TN, SOUTH-IN

### MEGAN CURRY

KEY ACCOUNT MANAGER – ASB  
916-396-8486  
[MEGAN.CURRY@ADIDAS.COM](mailto:MEGAN.CURRY@ADIDAS.COM)  
UT, CO, ASB TEXAS

### ERIC LUCKENBACH

KEY ACCOUNT MANAGER – EASTBAY TEAM SALES  
661-857-2391  
[ERIC.LUCKENBACH@ADIDAS.COM](mailto:ERIC.LUCKENBACH@ADIDAS.COM)  
SOUTH-CAL, SO NV, AZ

### TESSA KENNEDY

484-866-6997  
[TESSA.KENNEDY@ADIDAS.COM](mailto:TESSA.KENNEDY@ADIDAS.COM)  
EAST/WEST-PA, NJ, DE,  
NYC; LONG ISLAND, MD, DC

### PAUL ANDREWS

972-740-7579  
[PAUL.ANDREWS@ADIDAS.COM](mailto:PAUL.ANDREWS@ADIDAS.COM)  
TX, OK, AR

### SCOTT SNYDER

316-993-5426  
[SCOTT.SNYDER@ADIDAS.COM](mailto:SCOTT.SNYDER@ADIDAS.COM)  
KS, MO, SOUTH-IL

### PATTY SETA-TABB

513-858-9421  
[PATTY.SETA-TABB@ADIDAS.COM](mailto:PATTY.SETA-TABB@ADIDAS.COM)  
CENTRAL/NORTH-IN, MI, WV, OH

### MATT HOLT

864-398-8747  
[MATTHEW.HOLT@ADIDAS.COM](mailto:MATTHEW.HOLT@ADIDAS.COM)  
SC, NC, VA

### DAN O'DONNELL

636-698-3629  
[DAN.ODONNELL@ADIDAS.COM](mailto:DAN.ODONNELL@ADIDAS.COM)  
SD, NE, IA, NORTH-IL, ND, MN, WI

### TOM MONSELL

603-777-9935  
[THOMAS.MONSELL@ADIDAS.COM](mailto:THOMAS.MONSELL@ADIDAS.COM)  
ME, NH, VT, MA, RI, CT, NORTHEAST UPSTATE-NY,  
WEST-NY

### GREG PAIML

864-278-3295  
[GREGORY.PAIML@ADIDAS.COM](mailto:GREGORY.PAIML@ADIDAS.COM)  
AL, LA, MS

### FRED WOLFORD

770-815-2081  
[FRED.WOLFORD@ADIDAS.COM](mailto:FRED.WOLFORD@ADIDAS.COM)  
INSIDE SALES

### ROHN MULKEY

678-492-2527  
[ROHN.MULKEY@ADIDAS.COM](mailto:ROHN.MULKEY@ADIDAS.COM)  
GA, FL



# COMPLETE YOUR COLLECTION

## **BAG OF SPORT**

### **ICON SQUAD UNIFORM**



BASKETBALL



**M** ICON PULSE SHTR



**M** D.O.N. Issue 4



**M** 3G SPEE REV JRS



**M** PRO 3.0





GY6509 09/01/22



GY6505 09/01/22



GY6507 09/01/22



GY6506 09/01/22

D.O.N. Issue 4

\$110.00

- LIGHTSTRIKE: A LIGHTWEIGHT AND HIGHLY RESPONSIVE MIDSOLE MATERIAL THAT DELIVERS GREAT CUSHIONING AND COMFORT.

Material: TEXTILE/SYNTHETICS

Sizes: 4-15 | 16 | 17 | 18 | 19 | 20

GY6509 ftwr white/grey one/grey two

GY6505 core black/ftwr white/carbon

GY6507 team power red/ftwr white/core black

GY6506 team navy blue/ftwr white/core black



GW3922

11/01/22



GY8943

11/01/22



GW3924

11/01/22



GY8942

11/01/22



GY8941

11/01/22



GW3923

11/01/22

\$130.00

**Trae Young 2**

- BOOST: Boost is an industry leading and revolutionary cushioning technology which gives the ultimate energy return.
- BOOST: Responsive Cushioning for endless energy
- BOOST: Boost is our most responsive cushioning ever: The more energy you give, the more you get
- LIGHTSTRIKE: LIGHTSTRIKE is SUPER-LIGHT cushioning designed for explosive movement and next-level comfort
- LIGHTSTRIKE: A LIGHTWEIGHT AND HIGHLY RESPONSIVE MIDSOLE MATERIAL THAT DELIVERS GREAT CUSHIONING AND COMFORT.
- SCK360 Knit Upper: completely wraps the foot for next-level lockdown and agility

Sizes: 4-15 | 16 | 17 | 18 | 19 | 20

GW3922 ftwr white/core black/off white

GY8943 ftwr white/team light grey/off white

GW3924 ftwr white/team power red/off white

GY8942 ftwr white/team navy blue/off white

GY8941 ftwr white/team royal blue/off white

GW3923 ftwr white/team dark grey/off white



GY6462

09/01/22



GY6461

09/01/22

**DAME 8****\$120.00**

- Bounce Pro: dual density-provides the ideal ratio between energy return, cushioning and support

Material: TEXTILE/SYNTHETICS

Sizes: 4-15 | 16 | 17 | 18 | 19 | 20

GY6462 ftwr white/core black/grey one

GY6461 core black/ftwr white/grey six



GY8978

07/01/22



GZ2344

07/01/22

**Exhibit B WMNS Mid****\$120.00**

- LIGHTSTRIKE: LIGHTSTRIKE is SUPER-LIGHT cushioning designed for explosive movement and next-level comfort

Material: TEXTILE/SYNTHETICS

Sizes: 5-15

GY8978 grey two/ftwr white/core black

GZ2344 grey two/ftwr white/team maroon



GV8704

07/01/22

**Harden Vol. 6**

**\$140.00**

Sizes: 4-15 | 16 | 17 | 18 | 19 | 20

GV8704 core black/core black/ftwr white



HF6719 07/01/22

HF6720 07/01/22



HF6709 07/01/22



HF6718 07/01/22



HF6710 07/01/22



HM4389 07/01/22



HF6714 07/01/22



HF6712 07/01/22



HF6713 07/01/22



HF6715 07/01/22



HF6717 07/01/22



HF6716 07/01/22

**MENS ICON SQUAD JERSEY****\$45.00**

F22BMTMS300

- **BB Breathability:** External mesh waistband reduces weight to increase hip mobility.  
Ventilation to help you stay cool, dry and fresh to run it back.  
Material wicks away sweat with exceptional moisture management.  
XVENT perforation panels keep you cool with temperature and sweat management.  
XVENT mesh external waistband reduces weight to enhance airflow.  
Mesh perforation panels to keep you comfortably cool.
- **BB Comfort:** CLIMACOOOL Technology battles the heat with breathable quick-dry fabrics so you're always cool and dry.  
XTECH lightweight fabric keeps you cool, dry and undeniably comfortable on and off the court.
- **BB Fit:** Modern basketball fit.
- **BB Style:** XVENT franchise signature cutline.

Material: 100% rec polyester

Sizes: XS | S | M | L | XL | XXL | 3XL | 4XL | 5XL; Tall S | M | L | XL | XXL | 3XL

HF6719 black/white/white

HF6720 team power red/white/white

HF6709 team navy blue/white/white

HF6718 team royal blue/white/white

HF6710 team colleg purple/white/white

HM4389 team mid grey/white

HF6714 white/black/black

HF6712 white/team mid grey/team mid grey

HF6713 white/team power red/team power red

HF6715 white/team navy blue/team navy blue

HF6717 white/team royal blue/team royal blue

HF6716 white/team colleg purple/team colleg purple





HF6729 07/01/22



HF6730 07/01/22



HF6731 07/01/22



HF6728 07/01/22



HM4391 07/01/22



HF6732 07/01/22

### MENS ICON SQUAD SHORT

F22BMTMS100

\$45.00

- **BB Breathability:** External mesh waistband reduces weight to increase hip mobility.  
Ventilation to help you stay cool, dry and fresh to run it back.  
Material wicks away sweat with exceptional moisture management.  
XVENT perforation panels keep you cool with temperature and sweat management.  
XVENT mesh external waistband reduces weight to enhance airflow.  
Mesh perforation panels to keep you comfortably cool.
- **BB Comfort:** CLIMACOOOL Technology battles the heat with breathable quick-dry fabrics so you're always cool and dry.  
XTECH lightweight fabric keeps you cool, dry and undeniably comfortable on and off the court.
- **BB Fit:** Modern basketball fit.
- **BB Style:** XVENT franchise signature cutline.

Material: 100% rec polyester

Sizes: XS | S | M | L | XL | XXL | 3XL | 4XL | 5XL; Tall S | M | L | XL | XXL | 3XL

HF6732 black/white

HF6729 team power red/white/white

HF6730 team navy blue/white

HF6731 team royal blue/white

HF6728 team colleg purple/white

HM4391 team mid grey/white



HH9347 07/01/22 HH9348 07/01/22 HI5844 07/01/22 HI5846 07/01/22 HI5845 07/01/22



HI5843 07/01/22

### MENS ICON SQUAD SHORT F22BMTMS100B

\$45.00

- **BB Breathability:** External mesh waistband reduces weight to increase hip mobility.  
Ventilation to help you stay cool, dry and fresh to run it back.  
Material wicks away sweat with exceptional moisture management.  
XVENT perforation panels keep you cool with temperature and sweat management.  
XVENT mesh external waistband reduces weight to enhance airflow.  
Mesh perforation panels to keep you comfortably cool.
- **BB Comfort:** CLIMACOOOL Technology battles the heat with breathable quick-dry fabrics so you're always cool and dry.  
XTECH lightweight fabric keeps you cool, dry and undeniably comfortable on and off the court.
- **BB Fit:** Modern basketball fit.
- **BB Style:** XVENT franchise signature cutline.

Material: 100% rec polyester

Sizes: XS | S | M | L | XL | XXL | 3XL | 4XL | 5XL; Tall S | M | L | XL | XXL | 3XL

HI5843 white/black

HH9347 white/team mid grey

HH9348 white/team power red

HI5844 white/team navy blue

HI5846 white/team royal blue

HI5845 white/team colleg purple



HF6690 07/01/22

HF6691 07/01/22



HF6693 07/01/22



HF6692 07/01/22



HM4392 07/01/22



HF6694 07/01/22



HF6685 07/01/22



HF6688 07/01/22



HF6695 07/01/22



HF6696 07/01/22



HF6687 07/01/22



HF6686 07/01/22

**WOMENS ICON SQUAD JERSEY****\$45.00**

F22BWTMS300

- **BB Breathability:** External mesh waistband reduces weight to increase hip mobility.  
Ventilation to help you stay cool, dry and fresh to run it back.  
Material wicks away sweat with exceptional moisture management.  
XVENT perforation panels keep you cool with temperature and sweat management.  
XVENT mesh external waistband reduces weight to enhance airflow.  
Mesh perforation panels to keep you comfortably cool.
- **BB Comfort:** CLIMACOOOL Technology battles the heat with breathable quick-dry fabrics so you're always cool and dry.  
XTECH lightweight fabric keeps you cool, dry and undeniably comfortable on and off the court.
- **BB Fit:** Modern basketball fit.
- **BB Style:** XVENT franchise signature cutline.

Material: 100% rec polyester

Sizes: XS | S | M | L | XL | XXL | 3XL; Tall S | M | L | XL | XXL | 3XL

HF6690 black/white

HF6691 team navy blue/white

HF6693 team royal blue/white

HF6692 team colleg purple/white

HM4392 team mid grey/white

HF6694 white/black

HF6685 white/team mid grey

HF6688 team power red/white

HF6695 white/team power red/team power red

HF6696 white/team navy blue

HF6687 white/team royal blue

HF6686 white/team colleg purple



HF6700 07/01/22

HF6698 07/01/22



HF6699 07/01/22

HF6701 07/01/22

HM4393 07/01/22

**WOMENS ICON SQUAD SHORT**  
 F22BWTMS100
**\$45.00**

- **BB Breathability:** External mesh waistband reduces weight to increase hip mobility.  
 Ventilation to help you stay cool, dry and fresh to run it back.  
 Material wicks away sweat with exceptional moisture management.  
 XVENT perforation panels keep you cool with temperature and sweat management.  
 XVENT mesh external waistband reduces weight to enhance airflow.  
 Mesh perforation panels to keep you comfortably cool.
- **BB Comfort:** CLIMACOOOL Technology battles the heat with breathable quick-dry fabrics so you're always cool and dry.  
 XTECH lightweight fabric keeps you cool, dry and undeniably comfortable on and off the court.
- **BB Fit:** Modern basketball fit.
- **BB Style:** XVENT franchise signature cutline.

Material: 100% rec polyester

Sizes: XS | S | M | L | XL | XXL | 3XL; Tall S | M | L | XL | XXL | 3XL

HF6700 black/white

HF6698 team navy blue/white

HF6699 team royal blue/white

HF6701 team colleg purple/white

HM4393 team mid grey/white



HI5838

07/01/22

HI5837

07/01/22

**WOMENS ICON SQUAD SHORT****\$45.00**

F22BWTMS100B

- **BB Breathability:** External mesh waistband reduces weight to increase hip mobility.  
Ventilation to help you stay cool, dry and fresh to run it back.  
Material wicks away sweat with exceptional moisture management.  
XVENT perforation panels keep you cool with temperature and sweat management.  
XVENT mesh external waistband reduces weight to enhance airflow.  
Mesh perforation panels to keep you comfortably cool.
- **BB Comfort:** CLIMACOOOL Technology battles the heat with breathable quick-dry fabrics so you're always cool and dry.  
XTECH lightweight fabric keeps you cool, dry and undeniably comfortable on and off the court.
- **BB Fit:** Modern basketball fit.
- **BB Style:** XVENT franchise signature cutline.

Material: 100% rec polyester

Sizes: XS | S | M | L | XL | XXL | 3XL; Tall S | M | L | XL | XXL | 3XL

HI5838 white/black

HI5837 white/team mid grey





HF6697 07/01/22

### WOMENS ICON SQUAD SHORT

\$45.00

F22BWTMS100

- BB Breathability: External mesh waistband reduces weight to increase hip mobility.  
Ventilation to help you stay cool, dry and fresh to run it back.  
Material wicks away sweat with exceptional moisture management.  
XVENT perforation panels keep you cool with temperature and sweat management.  
XVENT mesh external waistband reduces weight to enhance airflow.  
Mesh perforation panels to keep you comfortably cool.
- BB Comfort: CLIMACOOOL Technology battles the heat with breathable quick-dry fabrics so you're always cool and dry.  
XTECH lightweight fabric keeps you cool, dry and undeniably comfortable on and off the court.
- BB Fit: Modern basketball fit.
- BB Style: XVENT franchise signature cutline.

Material: 100% rec polyester

Sizes: XS | S | M | L | XL | XXL | 3XL; Tall S | M | L | XL | XXL | 3XL

HF6697 team power red/white



**HI5842** 07/01/22    **HI5839** 07/01/22    **HI5841** 07/01/22    **HI5840** 07/01/22

### WOMENS ICON SQUAD SHORT

**\$45.00**

F22BWTMS100B

- **BB Breathability:** External mesh waistband reduces weight to increase hip mobility.  
Ventilation to help you stay cool, dry and fresh to run it back.  
Material wicks away sweat with exceptional moisture management.  
XVENT perforation panels keep you cool with temperature and sweat management.  
XVENT mesh external waistband reduces weight to enhance airflow.  
Mesh perforation panels to keep you comfortably cool.
- **BB Comfort:** CLIMACOOOL Technology battles the heat with breathable quick-dry fabrics so you're always cool and dry.  
XTECH lightweight fabric keeps you cool, dry and undeniably comfortable on and off the court.
- **BB Fit:** Modern basketball fit.
- **BB Style:** XVENT franchise signature cutline.

Material: 100% rec polyester

Sizes: XS | S | M | L | XL | XXL | 3XL; Tall S | M | L | XL | XXL | 3XL

**HI5842** white/team power red/team power red

**HI5839** white/team navy blue

**HI5841** white/team royal blue

**HI5840** white/team colleg purple



FR9422 06/01/22

FR9438 06/01/22

FR9423 06/01/22



FR9424 06/01/22



FR9425 06/01/22



FR9436 06/01/22



FR9435 06/01/22



FS6258 06/01/22



FR9433 06/01/22



FR9429 06/01/22



FR9431 06/01/22



FR9437 06/01/22



FR9432 06/01/22



FR9434 06/01/22



FR9430 06/01/22



FR9427 06/01/22



FR9428 06/01/22



FS6257 06/01/22

### N3XT L3V3L Prime Game Jersey \$35.00

F20BMTMS300

Whether you're getting shots up at the gym or running your opponents off the floor, you need to be comfortable. This adidas basketball jersey is cut loose for free and easy movement and features mesh panels for added breathability.

- Loose fit
- V-neck
- 100% recycled polyester mesh
- Lightweight feel
- Sleeveless basketball jersey
- Mesh panels

Material: 100% rec polyester

Sizes: XXS | XS | S | M | L | XL | XXL | 3XL | 4XL | 5XL; Tall L | XL | XXL | 3XL | 4XL | 5XL

FR9422 black/white

FR9438 grey four/white

FR9423 team navy blue/white

FR9424 team royal blue/white

FR9425 team maroon/white

FR9436 team colleg burgundy/white

FR9435 team dark green/white

FS6258 team colleg purple/white

FR9433 white/black

FR9429 white/grey four

FR9431 white/team power red

FR9437 team power red/white

FR9432 white/team navy blue

FR9434 white/team royal blue

FR9430 white/team maroon

FR9427 white/team colleg burgundy

FR9428 white/team dark green

FS6257 white/team colleg purple



FR9442 06/01/22

FR9443 06/01/22

FR9441 06/01/22

FR9439 06/01/22



FR9445 06/01/22

FR9440 06/01/22

FR9446 06/01/22

FS6260 06/01/22

FR9449 06/01/22

### N3XT L3V3L Prime Game Shorts F20BMTMS100

\$40.00

Breeze down the lane in pure comfort. Designed with perforated panels and a mesh waistband, these adidas basketball shorts keep you cool as you stack buckets during warm-weather runs.

- Loose fit
- Drawcord on elastic waist
- 100% recycled polyester mesh
- Lightweight feel
- Breathable basketball shorts
- Mesh waistband
- Perforated panels

Material: 100% rec polyester

Sizes: XXS | XS | S | M | L | XL | XXL | 3XL | 4XL | 5XL; Tall L | XL | XXL | 3XL | 4XL | 5XL

---

FR9442 black/white

---

FR9443 grey four/white

---

FR9441 team navy blue/white

---

FR9439 team royal blue/white

---

FR9445 team maroon/white

---

FR9440 team colleg burgundy/white

---

FR9446 team dark green/white

---

FS6260 team colleg purple/white

---

FR9449 team power red/white

---



G18715 06/01/22

G18717 06/01/22

G18718 06/01/22

G18716 06/01/22



G18714 06/01/22

G18719 06/01/22

G18713 06/01/22

G18712 06/01/22

G18720 06/01/22

### N3XT L3V3L Prime Shorts F20BMTMS100B

\$40.00

Stay cool and get buckets in these adidas basketball shorts. Lightweight and breathable, they have a loose fit that's locked down with a drawcord elastic waist to keep you moving confidently up and down the floor.

- Loose fit
- Drawcord on elastic waist
- 100% recycled polyester mesh
- Lightweight feel
- Breathable basketball shorts
- Mesh waistband
- Perforated panels

Material: 100% rec polyester

Sizes: XXS | XS | S | M | L | XL | XXL | 3XL | 4XL | 5XL; Tall L | XL | XXL | 3XL | 4XL | 5XL

G18715 white/black

G18717 white/grey four

G18718 white/team power red

G18716 white/team navy blue

G18714 white/team royal blue

G18719 white/team maroon

G18713 white/team colleg burgundy

G18712 white/team dark green

G18720 white/team colleg purple





FR9389 06/01/22 FR9395 06/01/22 FR9393 06/01/22



FR9392 06/01/22 FR9391 06/01/22 FR9397 06/01/22 FR9390 06/01/22 FS6261 06/01/22



FR9400 06/01/22 FR9398 06/01/22 FR9396 06/01/22 FR9399 06/01/22 FR9401 06/01/22



FR9394 06/01/22 FR9403 06/01/22 FR9402 06/01/22 FR9404 06/01/22 FS6262 06/01/22

### N3XT PRIME W GAME JERSEY F20BWTMS300

**\$35.00**

- **BB Breathability:** External mesh waistband reduces weight to increase hip mobility.  
Ventilation to help you stay cool, dry and fresh to run it back.  
Material wicks away sweat with exceptional moisture management.  
XVENT perforation panels keep you cool with temperature and sweat management.  
XVENT mesh external waistband reduces weight to enhance airflow.  
Mesh perforation panels to keep you comfortably cool.
- **BB Comfort:** CLIMACOOL Technology battles the heat with breathable quick-dry fabrics so you're always cool and dry.  
XTECH lightweight fabric keeps you cool, dry and undeniably comfortable on and off the court.
- **BB Fit:** Modern basketball fit.
- **BB Style:** XVENT franchise signature cutline.

Material: 100% rec polyester

Sizes: XXS | XS | S | M | L | XL | XXL | 3XL | 4XL; Tall M | L | XL | XXL | 3XL | 4XL

FR9389 black/white

FR9395 grey four/white

FR9393 team navy blue/white

FR9392 team royal blue/white

FR9391 team maroon/white

FR9397 team colleg burgundy/white

FR9390 team dark green/white

FS6261 team colleg purple/white

FR9400 white/black

FR9398 white/grey four

FR9396 team power red/white

FR9399 white/team power red

FR9401 white/team navy blue

FR9394 white/team royal blue

FR9403 white/team maroon

FR9402 white/team colleg burgundy

FR9404 white/team dark green

FS6262 white/team colleg purple



**FR9420** 06/01/22   **FR9412** 06/01/22   **FR9421** 06/01/22   **FR9416** 06/01/22



**FR9417** 06/01/22   **FR9418** 06/01/22   **FR9419** 06/01/22   **FS6264** 06/01/22   **FR9413** 06/01/22

**N3XT PRIME W GAME SHORT**  
F20BWTMS100

**\$40.00**

- **BB Breathability:** External mesh waistband reduces weight to increase hip mobility.  
Ventilation to help you stay cool, dry and fresh to run it back.  
Material wicks away sweat with exceptional moisture management.  
XVENT perforation panels keep you cool with temperature and sweat management.  
XVENT mesh external waistband reduces weight to enhance airflow.  
Mesh perforation panels to keep you comfortably cool.
- **BB Comfort:** CLIMACOOOL Technology battles the heat with breathable quick-dry fabrics so you're always cool and dry.  
XTECH lightweight fabric keeps you cool, dry and undeniably comfortable on and off the court.
- **BB Fit:** Modern basketball fit.
- **BB Style:** XVENT franchise signature cutline.

Material: 100% rec polyester

Sizes: XXS | XS | S | M | L | XL | XXL | 3XL | 4XL; Tall M | L | XL | XXL | 3XL | 4XL

**FR9420** black/white

**FR9412** grey four/white

**FR9421** team navy blue/white

**FR9416** team royal blue/white

**FR9417** team maroon/white

**FR9418** team colleg burgundy/white

**FR9419** team dark green/white

**FS6264** team colleg purple/white

**FR9413** team power red/white



**G18723** 06/01/22   **G18729** 06/01/22   **G18722** 06/01/22   **G18724** 06/01/22



**G18725** 06/01/22   **G18726** 06/01/22   **G18727** 06/01/22   **G18728** 06/01/22   **G18721** 06/01/22

**N3XT PRIME W SHORT**  
F20BWTMS100B

**\$40.00**

- **BB Breathability:** External mesh waistband reduces weight to increase hip mobility.  
Ventilation to help you stay cool, dry and fresh to run it back.  
Material wicks away sweat with exceptional moisture management.  
XVENT perforation panels keep you cool with temperature and sweat management.  
XVENT mesh external waistband reduces weight to enhance airflow.  
Mesh perforation panels to keep you comfortably cool.
- **BB Comfort:** CLIMACOOOL Technology battles the heat with breathable quick-dry fabrics so you're always cool and dry.  
XTECH lightweight fabric keeps you cool, dry and undeniably comfortable on and off the court.
- **BB Fit:** Modern basketball fit.
- **BB Style:** XVENT franchise signature cutline.

Material: 100% rec polyester

Sizes: XXS | XS | S | M | L | XL | XXL | 3XL | 4XL; Tall M | L | XL | XXL | 3XL | 4XL

**G18723** white/black

**G18729** white/grey four

**G18722** white/team power red

**G18724** white/team navy blue

**G18725** white/team royal blue

**G18726** white/team maroon

**G18727** white/team colleg burgundy

**G18728** white/team dark green

**G18721** white/team colleg purple



**DX6384** 06/01/22

**3G Speed Reversible Jersey** **\$30.00**  
F19BWTMS350

Attack the hoop in versatile comfort in this basketball jersey. The reversible design features a mesh build with contrast 3-Stripes on one side and a durable doubleknit build on the other. Built to control airflow on every possession, it's made of moisture-wicking fabric for elevated ventilation.

- Basketball modern fit is cut close to the body
- Round neck
- Sleeveless
- Side A: 100% recycled polyester mesh; Side B: 100% polyester doubleknit
- Breathable, moisture-wicking fabric
- Reversible: Contrast 3-Stripes on one side, no 3-Stripes on other side
- Sweat-wicking Climalite fabric; UPF 15 UV protection
- This jersey is made with recycled polyester to save resources and decrease emissions

Sizes: XXS | XS | S | M | L | XL | XXL | 3XL | 4XL; Tall M | L | XL | XXL | 3XL | 4XL

**DX6384** black/white



DX6385

06/01/22

DY6595

06/01/22

**3G Speed Reversible Jersey****\$30.00**

F19BMTMS350

Attack the hoop in versatile comfort in this basketball jersey. The reversible design features a mesh build with contrast 3-Stripes on one side and a durable doubleknit build on the other. Built to control airflow on every possession, it's made of moisture-wicking fabric for elevated ventilation.

- Basketball modern fit is cut close to the body
- Round neck
- Sleeveless
- Side A: 100% recycled polyester mesh; Side B: 100% polyester doubleknit
- Breathable, moisture-wicking fabric
- Reversible: Contrast 3-Stripes on one side, no 3-Stripes on other side
- Sweat-wicking Climalite fabric; UPF 15 UV protection; Reversible
- This jersey is made with recycled polyester to save resources and decrease emissions

Sizes: XXS | XS | S | M | L | XL | XXL | 3XL | 4XL | 5XL; Tall L | XL | XXL | 3XL | 4XL | 5XL

DX6385 black/white

DY6595 power red/white





DY6604 06/01/22

**3G Speed Reversible Jersey** **\$30.00**  
F19BWTMS350

Attack the hoop in versatile comfort in this basketball jersey. The reversible design features a mesh build with contrast 3-Stripes on one side and a durable doubleknit build on the other. Built to control airflow on every possession, it's made of moisture-wicking fabric for elevated ventilation.

- Basketball modern fit is cut close to the body
- Round neck
- Sleeveless
- Side A: 100% recycled polyester mesh; Side B: 100% polyester doubleknit
- Breathable, moisture-wicking fabric
- Reversible: Contrast 3-Stripes on one side, no 3-Stripes on other side
- Sweat-wicking Climalite fabric; UPF 15 UV protection
- This jersey is made with recycled polyester to save resources and decrease emissions

Sizes: XXS | XS | S | M | L | XL | XXL | 3XL | 4XL; Tall M | L | XL | XXL | 3XL | 4XL

DY6604 power red/white



**3G Speed Reversible Jersey** **\$30.00**  
F19BMTMS350

Attack the hoop in versatile comfort in this basketball jersey. The reversible design features a mesh build with contrast 3-Stripes on one side and a durable doubleknit build on the other. Built to control airflow on every possession, it's made of moisture-wicking fabric for elevated ventilation.

- Basketball modern fit is cut close to the body
- Round neck
- Sleeveless
- Side A: 100% recycled polyester mesh; Side B: 100% polyester doubleknit
- Breathable, moisture-wicking fabric
- Reversible: Contrast 3-Stripes on one side, no 3-Stripes on other side
- Sweat-wicking Climalite fabric; UPF 15 UV protection; Reversible
- This jersey is made with recycled polyester to save resources and decrease emissions

Sizes: XXS | XS | S | M | L | XL | XXL | 3XL | 4XL | 5XL; Tall L | XL | XXL | 3XL | 4XL | 5XL

DY6594 06/01/22

DY6594 collegiate navy/white



DY6610 06/01/22

**3G Speed Reversible Jersey**  
F19BWTMS350**\$30.00**

Attack the hoop in versatile comfort in this basketball jersey. The reversible design features a mesh build with contrast 3-Stripes on one side and a durable doubleknit build on the other. Built to control airflow on every possession, it's made of moisture-wicking fabric for elevated ventilation.

- Basketball modern fit is cut close to the body
- Round neck
- Sleeveless
- Side A: 100% recycled polyester mesh; Side B: 100% polyester doubleknit
- Breathable, moisture-wicking fabric
- Reversible: Contrast 3-Stripes on one side, no 3-Stripes on other side
- Sweat-wicking Climalite fabric; UPF 15 UV protection
- This jersey is made with recycled polyester to save resources and decrease emissions

Sizes: XXS | XS | S | M | L | XL | XXL | 3XL | 4XL; Tall M | L | XL | XXL | 3XL | 4XL

DY6610 collegiate navy/white



DY6593

06/01/22

**3G Speed Reversible Jersey****\$30.00**

F19BMTMS350

Attack the hoop in versatile comfort in this basketball jersey. The reversible design features a mesh build with contrast 3-Stripes on one side and a durable doubleknit build on the other. Built to control airflow on every possession, it's made of moisture-wicking fabric for elevated ventilation.

- Basketball modern fit is cut close to the body
- Round neck
- Sleeveless
- Side A: 100% recycled polyester mesh; Side B: 100% polyester doubleknit
- Breathable, moisture-wicking fabric
- Reversible: Contrast 3-Stripes on one side, no 3-Stripes on other side
- Sweat-wicking Climalite fabric; UPF 15 UV protection; Reversible
- This jersey is made with recycled polyester to save resources and decrease emissions

Sizes: XXS | XS | S | M | L | XL | XXL | 3XL | 4XL | 5XL; Tall L | XL | XXL | 3XL | 4XL | 5XL

DY6593 collegiate royal/white



DY6609 06/01/22

**3G Speed Reversible Jersey**  
F19BWTMS350**\$30.00**

Attack the hoop in versatile comfort in this basketball jersey. The reversible design features a mesh build with contrast 3-Stripes on one side and a durable doubleknit build on the other. Built to control airflow on every possession, it's made of moisture-wicking fabric for elevated ventilation.

- Basketball modern fit is cut close to the body
- Round neck
- Sleeveless
- Side A: 100% recycled polyester mesh; Side B: 100% polyester doubleknit
- Breathable, moisture-wicking fabric
- Reversible: Contrast 3-Stripes on one side, no 3-Stripes on other side
- Sweat-wicking Climalite fabric; UPF 15 UV protection
- This jersey is made with recycled polyester to save resources and decrease emissions

Sizes: XXS | XS | S | M | L | XL | XXL | 3XL | 4XL; Tall M | L | XL  
| XXL | 3XL | 4XL

DY6609 collegiate royal/white



DY6590 06/01/22

**3G Speed Reversible Jersey** **\$30.00**  
F19BMTMS350

Attack the hoop in versatile comfort in this basketball jersey. The reversible design features a mesh build with contrast 3-Stripes on one side and a durable doubleknit build on the other. Built to control airflow on every possession, it's made of moisture-wicking fabric for elevated ventilation.

- Basketball modern fit is cut close to the body
- Round neck
- Sleeveless
- Side A: 100% recycled polyester mesh; Side B: 100% polyester doubleknit
- Breathable, moisture-wicking fabric
- Reversible: Contrast 3-Stripes on one side, no 3-Stripes on other side
- Sweat-wicking Climalite fabric; UPF 15 UV protection; Reversible
- This jersey is made with recycled polyester to save resources and decrease emissions

Sizes: XXS | XS | S | M | L | XL | XXL | 3XL | 4XL | 5XL; Tall L | XL | XXL | 3XL | 4XL | 5XL

DY6590 maroon/white



DY6606 06/01/22

**3G Speed Reversible Jersey** **\$30.00**  
F19BWTMS350

Attack the hoop in versatile comfort in this basketball jersey. The reversible design features a mesh build with contrast 3-Stripes on one side and a durable doubleknit build on the other. Built to control airflow on every possession, it's made of moisture-wicking fabric for elevated ventilation.

- Basketball modern fit is cut close to the body
- Round neck
- Sleeveless
- Side A: 100% recycled polyester mesh; Side B: 100% polyester doubleknit
- Breathable, moisture-wicking fabric
- Reversible: Contrast 3-Stripes on one side, no 3-Stripes on other side
- Sweat-wicking Climalite fabric; UPF 15 UV protection
- This jersey is made with recycled polyester to save resources and decrease emissions

Sizes: XXS | XS | S | M | L | XL | XXL | 3XL | 4XL; Tall M | L | XL | XXL | 3XL | 4XL

DY6606 maroon/white



DY6589

06/01/22

**3G Speed Reversible Jersey****\$30.00**

F19BMTMS350

Attack the hoop in versatile comfort in this basketball jersey. The reversible design features a mesh build with contrast 3-Stripes on one side and a durable doubleknit build on the other. Built to control airflow on every possession, it's made of moisture-wicking fabric for elevated ventilation.

- Basketball modern fit is cut close to the body
- Round neck
- Sleeveless
- Side A: 100% recycled polyester mesh; Side B: 100% polyester doubleknit
- Breathable, moisture-wicking fabric
- Reversible: Contrast 3-Stripes on one side, no 3-Stripes on other side
- Sweat-wicking Climalite fabric; UPF 15 UV protection; Reversible
- This jersey is made with recycled polyester to save resources and decrease emissions

Sizes: XXS | XS | S | M | L | XL | XXL | 3XL | 4XL | 5XL; Tall L | XL | XXL | 3XL | 4XL | 5XL

DY6589 dark green/white





DY6605 06/01/22

**3G Speed Reversible Jersey** **\$30.00**  
F19BWTMS350

Attack the hoop in versatile comfort in this basketball jersey. The reversible design features a mesh build with contrast 3-Stripes on one side and a durable doubleknit build on the other. Built to control airflow on every possession, it's made of moisture-wicking fabric for elevated ventilation.

- Basketball modern fit is cut close to the body
- Round neck
- Sleeveless
- Side A: 100% recycled polyester mesh; Side B: 100% polyester doubleknit
- Breathable, moisture-wicking fabric
- Reversible: Contrast 3-Stripes on one side, no 3-Stripes on other side
- Sweat-wicking Climalite fabric; UPF 15 UV protection
- This jersey is made with recycled polyester to save resources and decrease emissions

Sizes: XXS | XS | S | M | L | XL | XXL | 3XL | 4XL; Tall M | L | XL | XXL | 3XL | 4XL

DY6605 dark green/white



3G Speed Reversible Jersey

F19BMTMS350

\$30.00

Attack the hoop in versatile comfort in this basketball jersey. The reversible design features a mesh build with contrast 3-Stripes on one side and a durable doubleknit build on the other. Built to control airflow on every possession, it's made of moisture-wicking fabric for elevated ventilation.

- Basketball modern fit is cut close to the body
- Round neck
- Sleeveless
- Side A: 100% recycled polyester mesh; Side B: 100% polyester doubleknit
- Breathable, moisture-wicking fabric
- Reversible: Contrast 3-Stripes on one side, no 3-Stripes on other side
- Sweat-wicking Climalite fabric; UPF 15 UV protection; Reversible
- This jersey is made with recycled polyester to save resources and decrease emissions

Sizes: XXS | XS | S | M | L | XL | XXL | 3XL | 4XL | 5XL; Tall L | XL | XXL | 3XL | 4XL | 5XL

DY6591 06/01/22

DY6591 collegiate purple/white



DY6607 06/01/22

**3G Speed Reversible Jersey** **\$30.00**  
F19BWTMS350

Attack the hoop in versatile comfort in this basketball jersey. The reversible design features a mesh build with contrast 3-Stripes on one side and a durable doubleknit build on the other. Built to control airflow on every possession, it's made of moisture-wicking fabric for elevated ventilation.

- Basketball modern fit is cut close to the body
- Round neck
- Sleeveless
- Side A: 100% recycled polyester mesh; Side B: 100% polyester doubleknit
- Breathable, moisture-wicking fabric
- Reversible: Contrast 3-Stripes on one side, no 3-Stripes on other side
- Sweat-wicking Climalite fabric; UPF 15 UV protection
- This jersey is made with recycled polyester to save resources and decrease emissions

Sizes: XXS | XS | S | M | L | XL | XXL | 3XL | 4XL; Tall M | L | XL | XXL | 3XL | 4XL

DY6607 collegiate purple/white



DY6592

06/01/22

**3G Speed Reversible Jersey****\$30.00**

F19BMTMS350

Attack the hoop in versatile comfort in this basketball jersey. The reversible design features a mesh build with contrast 3-Stripes on one side and a durable doubleknit build on the other. Built to control airflow on every possession, it's made of moisture-wicking fabric for elevated ventilation.

- Basketball modern fit is cut close to the body
- Round neck
- Sleeveless
- Side A: 100% recycled polyester mesh; Side B: 100% polyester doubleknit
- Breathable, moisture-wicking fabric
- Reversible: Contrast 3-Stripes on one side, no 3-Stripes on other side
- Sweat-wicking Climalite fabric; UPF 15 UV protection; Reversible
- This jersey is made with recycled polyester to save resources and decrease emissions

Sizes: XXS | XS | S | M | L | XL | XXL | 3XL | 4XL | 5XL; Tall L | XL | XXL | 3XL | 4XL | 5XL

DY6592 onix/white



DY6608 06/01/22

**3G Speed Reversible Jersey** **\$30.00**  
F19BWTMS350

Attack the hoop in versatile comfort in this basketball jersey. The reversible design features a mesh build with contrast 3-Stripes on one side and a durable doubleknit build on the other. Built to control airflow on every possession, it's made of moisture-wicking fabric for elevated ventilation.

- Basketball modern fit is cut close to the body
- Round neck
- Sleeveless
- Side A: 100% recycled polyester mesh; Side B: 100% polyester doubleknit
- Breathable, moisture-wicking fabric
- Reversible: Contrast 3-Stripes on one side, no 3-Stripes on other side
- Sweat-wicking Climalite fabric; UPF 15 UV protection
- This jersey is made with recycled polyester to save resources and decrease emissions

Sizes: XXS | XS | S | M | L | XL | XXL | 3XL | 4XL; Tall M | L | XL | XXL | 3XL | 4XL

DY6608 onix/white



DX6378

06/01/22

**3G Speed Reversible Shorts****\$30.00**

F19BWTMS150

Sometimes you need to switch it up on the hardwood. These basketball shorts feature sweat-wicking fabric to sweep moisture away from your skin. Built in a reversible design, one side is made of breathable polyester mesh and the other side is durable polyester doubleknit.

- Basketball modern fit is cut close to the body
- Side A: 100% recycled polyester mesh; Side B: 100% polyester doubleknit
- Lightweight, breathable fabric
- Drawcord on elastic waist
- Sweat-wicking Climalite fabric; Reversible
- These shorts are made with recycled polyester to save resources and decrease emissions

Material: 100% rec polyester

Sizes: XS | S | M | L | XL

DX6378 black/white

**DX6386**

06/01/22

**DY6603**

06/01/22

**3G Speed Reversible Shorts****\$30.00**

F19BMTMS150

Sometimes you need to switch it up on the hardwood. These basketball shorts feature sweat-wicking fabric to sweep moisture away from your skin. They're built in a reversible design, with one side made of breathable polyester mesh and the other of durable polyester doubleknit.

Stay dry

Climalite wicks sweat to keep you dry in every condition

Added ventilation

Mesh waistband is designed to keep air flowing

- Basketball modern fit is cut close to the body
- Side A: 100% recycled polyester mesh; Side B: 100% polyester doubleknit
- Breathable, moisture-wicking fabric
- Elastic waist with mesh internal drawcord; Tonal 3-Stripes
- Sweat-wicking Climalite fabric; Reversible; Side B: UPF 15 UV protection
- These shorts are made with recycled polyester to save resources and decrease emissions

Sizes: XXS | XS | S | M | L | XL | XXL | 3XL | 4XL | 5XL; Tall M | L | XL | XXL | 3XL | 4XL | 5XL

**DX6386** black/white

**DY6603** power red/white



DY6611 06/01/22

### 3G Speed Reversible Shorts

\$30.00

F19BWTMS150

Sometimes you need to switch it up on the hardwood. These basketball shorts feature sweat-wicking fabric to sweep moisture away from your skin. Built in a reversible design, one side is made of breathable polyester mesh and the other side is durable polyester doubleknit.

- Basketball modern fit is cut close to the body
- Side A: 100% recycled polyester mesh; Side B: 100% polyester doubleknit
- Lightweight, breathable fabric
- Drawcord on elastic waist
- Sweat-wicking Climalite fabric; Reversible
- These shorts are made with recycled polyester to save resources and decrease emissions

Material: 100% rec polyester

Sizes: XS | S | M | L | XL

DY6611 power red/white





DY6602

06/01/22

**3G Speed Reversible Shorts****\$30.00**

F19BMTMS150

Sometimes you need to switch it up on the hardwood. These basketball shorts feature sweat-wicking fabric to sweep moisture away from your skin. They're built in a reversible design, with one side made of breathable polyester mesh and the other of durable polyester doubleknit.

Stay dry

Climalite wicks sweat to keep you dry in every condition

Added ventilation

Mesh waistband is designed to keep air flowing

- Basketball modern fit is cut close to the body
- Side A: 100% recycled polyester mesh; Side B: 100% polyester doubleknit
- Breathable, moisture-wicking fabric
- Elastic waist with mesh internal drawcord; Tonal 3-Stripes
- Sweat-wicking Climalite fabric; Reversible; Side B: UPF 15 UV protection
- These shorts are made with recycled polyester to save resources and decrease emissions

Sizes: XXS | XS | S | M | L | XL | XXL | 3XL | 4XL | 5XL; Tall M | L | XL | XXL | 3XL | 4XL | 5XL

DY6602 collegiate navy/white



DY6617 06/01/22

**3G Speed Reversible Shorts****\$30.00**

F19BWTMS150

Sometimes you need to switch it up on the hardwood. These basketball shorts feature sweat-wicking fabric to sweep moisture away from your skin. Built in a reversible design, one side is made of breathable polyester mesh and the other side is durable polyester doubleknit.

- Basketball modern fit is cut close to the body
- Side A: 100% recycled polyester mesh; Side B: 100% polyester doubleknit
- Lightweight, breathable fabric
- Drawcord on elastic waist
- Sweat-wicking Climalite fabric; Reversible
- These shorts are made with recycled polyester to save resources and decrease emissions

Material: 100% rec polyester

Sizes: XS | S | M | L | XL

DY6617 collegiate navy/white



DY6601

06/01/22

**3G Speed Reversible Shorts****\$30.00**

F19BMTMS150

Sometimes you need to switch it up on the hardwood. These basketball shorts feature sweat-wicking fabric to sweep moisture away from your skin. They're built in a reversible design, with one side made of breathable polyester mesh and the other of durable polyester doubleknit.

Stay dry

Climalite wicks sweat to keep you dry in every condition

Added ventilation

Mesh waistband is designed to keep air flowing

- Basketball modern fit is cut close to the body
- Side A: 100% recycled polyester mesh; Side B: 100% polyester doubleknit
- Breathable, moisture-wicking fabric
- Elastic waist with mesh internal drawcord; Tonal 3-Stripes
- Sweat-wicking Climalite fabric; Reversible; Side B: UPF 15 UV protection
- These shorts are made with recycled polyester to save resources and decrease emissions

Sizes: XXS | XS | S | M | L | XL | XXL | 3XL | 4XL | 5XL; Tall M | L | XL | XXL | 3XL | 4XL | 5XL

DY6601 collegiate royal/white



DY6616 06/01/22

**3G Speed Reversible Shorts****\$30.00**

F19BWTMS150

Sometimes you need to switch it up on the hardwood. These basketball shorts feature sweat-wicking fabric to sweep moisture away from your skin. Built in a reversible design, one side is made of breathable polyester mesh and the other side is durable polyester doubleknit.

- Basketball modern fit is cut close to the body
- Side A: 100% recycled polyester mesh; Side B: 100% polyester doubleknit
- Lightweight, breathable fabric
- Drawcord on elastic waist
- Sweat-wicking Climalite fabric; Reversible
- These shorts are made with recycled polyester to save resources and decrease emissions

Material: 100% rec polyester

Sizes: XS | S | M | L | XL

DY6616 collegiate royal/white



DY6598

06/01/22

**3G Speed Reversible Shorts****\$30.00**

F19BMTMS150

Sometimes you need to switch it up on the hardwood. These basketball shorts feature sweat-wicking fabric to sweep moisture away from your skin. They're built in a reversible design, with one side made of breathable polyester mesh and the other of durable polyester doubleknit.

Stay dry

Climalite wicks sweat to keep you dry in every condition

Added ventilation

Mesh waistband is designed to keep air flowing

- Basketball modern fit is cut close to the body
- Side A: 100% recycled polyester mesh; Side B: 100% polyester doubleknit
- Breathable, moisture-wicking fabric
- Elastic waist with mesh internal drawcord; Tonal 3-Stripes
- Sweat-wicking Climalite fabric; Reversible; Side B: UPF 15 UV protection
- These shorts are made with recycled polyester to save resources and decrease emissions

Sizes: XXS | XS | S | M | L | XL | XXL | 3XL | 4XL | 5XL; Tall M | L | XL | XXL | 3XL | 4XL | 5XL

DY6598 maroon/white



DY6613 06/01/22

**3G Speed Reversible Shorts** **\$30.00**  
F19BWTMS150

Sometimes you need to switch it up on the hardwood. These basketball shorts feature sweat-wicking fabric to sweep moisture away from your skin. Built in a reversible design, one side is made of breathable polyester mesh and the other side is durable polyester doubleknit.

- Basketball modern fit is cut close to the body
- Side A: 100% recycled polyester mesh; Side B: 100% polyester doubleknit
- Lightweight, breathable fabric
- Drawcord on elastic waist
- Sweat-wicking Climalite fabric; Reversible
- These shorts are made with recycled polyester to save resources and decrease emissions

Material: 100% rec polyester

Sizes: XS | S | M | L | XL

DY6613 maroon/white



DY6597

06/01/22

**3G Speed Reversible Shorts****\$30.00**

F19BMTMS150

Sometimes you need to switch it up on the hardwood. These basketball shorts feature sweat-wicking fabric to sweep moisture away from your skin. They're built in a reversible design, with one side made of breathable polyester mesh and the other of durable polyester doubleknit.

Stay dry

Climalite wicks sweat to keep you dry in every condition

Added ventilation

Mesh waistband is designed to keep air flowing

- Basketball modern fit is cut close to the body
- Side A: 100% recycled polyester mesh; Side B: 100% polyester doubleknit
- Breathable, moisture-wicking fabric
- Elastic waist with mesh internal drawcord; Tonal 3-Stripes
- Sweat-wicking Climalite fabric; Reversible; Side B: UPF 15 UV protection
- These shorts are made with recycled polyester to save resources and decrease emissions

Sizes: XXS | XS | S | M | L | XL | XXL | 3XL | 4XL | 5XL; Tall M | L | XL | XXL | 3XL | 4XL | 5XL

DY6597 dark green/white



DY6612 06/01/22

### 3G Speed Reversible Shorts

\$30.00

F19BWTMS150

Sometimes you need to switch it up on the hardwood. These basketball shorts feature sweat-wicking fabric to sweep moisture away from your skin. Built in a reversible design, one side is made of breathable polyester mesh and the other side is durable polyester doubleknit.

- Basketball modern fit is cut close to the body
- Side A: 100% recycled polyester mesh; Side B: 100% polyester doubleknit
- Lightweight, breathable fabric
- Drawcord on elastic waist
- Sweat-wicking Climalite fabric; Reversible
- These shorts are made with recycled polyester to save resources and decrease emissions

Material: 100% rec polyester

Sizes: XS | S | M | L | XL

DY6612 dark green/white





DY6599

06/01/22

**3G Speed Reversible Shorts**

F19BMTMS150

**\$30.00**

Sometimes you need to switch it up on the hardwood. These basketball shorts feature sweat-wicking fabric to sweep moisture away from your skin. They're built in a reversible design, with one side made of breathable polyester mesh and the other of durable polyester doubleknit.

Stay dry

Climalite wicks sweat to keep you dry in every condition

Added ventilation

Mesh waistband is designed to keep air flowing

- Basketball modern fit is cut close to the body
- Side A: 100% recycled polyester mesh; Side B: 100% polyester doubleknit
- Breathable, moisture-wicking fabric
- Elastic waist with mesh internal drawcord; Tonal 3-Stripes
- Sweat-wicking Climalite fabric; Reversible; Side B: UPF 15 UV protection
- These shorts are made with recycled polyester to save resources and decrease emissions

Sizes: XXS | XS | S | M | L | XL | XXL | 3XL | 4XL | 5XL; Tall M | L | XL | XXL | 3XL | 4XL | 5XL

DY6599 collegiate purple/white



DY6614 06/01/22

### 3G Speed Reversible Shorts

\$30.00

F19BWTMS150

Sometimes you need to switch it up on the hardwood. These basketball shorts feature sweat-wicking fabric to sweep moisture away from your skin. Built in a reversible design, one side is made of breathable polyester mesh and the other side is durable polyester doubleknit.

- Basketball modern fit is cut close to the body
- Side A: 100% recycled polyester mesh; Side B: 100% polyester doubleknit
- Lightweight, breathable fabric
- Drawcord on elastic waist
- Sweat-wicking Climalite fabric; Reversible
- These shorts are made with recycled polyester to save resources and decrease emissions

Material: 100% rec polyester

Sizes: XS | S | M | L | XL

DY6614 collegiate purple/white



DY6600

06/01/22

**3G Speed Reversible Shorts****\$30.00**

F19BMTMS150

Sometimes you need to switch it up on the hardwood. These basketball shorts feature sweat-wicking fabric to sweep moisture away from your skin. They're built in a reversible design, with one side made of breathable polyester mesh and the other of durable polyester doubleknit.

Stay dry

Climalite wicks sweat to keep you dry in every condition

Added ventilation

Mesh waistband is designed to keep air flowing

- Basketball modern fit is cut close to the body
- Side A: 100% recycled polyester mesh; Side B: 100% polyester doubleknit
- Breathable, moisture-wicking fabric
- Elastic waist with mesh internal drawcord; Tonal 3-Stripes
- Sweat-wicking Climalite fabric; Reversible; Side B: UPF 15 UV protection
- These shorts are made with recycled polyester to save resources and decrease emissions

Sizes: XXS | XS | S | M | L | XL | XXL | 3XL | 4XL | 5XL; Tall M | L | XL | XXL | 3XL | 4XL | 5XL

DY6600 onix/white



DY6615 06/01/22

**3G Speed Reversible Shorts** **\$30.00**  
F19BWTMS150

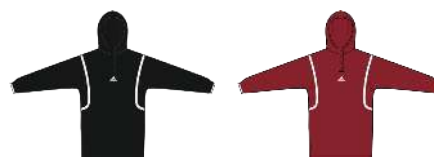
Sometimes you need to switch it up on the hardwood. These basketball shorts feature sweat-wicking fabric to sweep moisture away from your skin. Built in a reversible design, one side is made of breathable polyester mesh and the other side is durable polyester doubleknit.

- Basketball modern fit is cut close to the body
- Side A: 100% recycled polyester mesh; Side B: 100% polyester doubleknit
- Lightweight, breathable fabric
- Drawcord on elastic waist
- Sweat-wicking Climalite fabric; Reversible
- These shorts are made with recycled polyester to save resources and decrease emissions

Material: 100% rec polyester

Sizes: XS | S | M | L | XL

DY6615 onix/white



HF6651 07/01/22 HF6650 07/01/22



HF6648 07/01/22 HF6649 07/01/22 HU1704 07/01/22

#### MENS ICON PULSE SHOOTER F22BMTMS700

\$55.00

- **BB Breathability:** External mesh waistband reduces weight to increase hip mobility.  
Ventilation to help you stay cool, dry and fresh to run it back.  
Material wicks away sweat with exceptional moisture management.  
XVENT perforation panels keep you cool with temperature and sweat management.  
XVENT mesh external waistband reduces weight to enhance airflow.  
Mesh perforation panels to keep you comfortably cool.
- **BB Comfort:** CLIMACOOOL Technology battles the heat with breathable quick-dry fabrics so you're always cool and dry.  
XTECH lightweight fabric keeps you cool, dry and undeniably comfortable on and off the court.
- **BB Fit:** Modern basketball fit.
- **BB Style:** XVENT franchise signature cutline.

Material: 100% rec polyester

Sizes: XS | S | M | L | XL | XXL | 3XL | 4XL | 5XL; Tall S | M | L | XL | XXL | 3XL

HF6651 black/white/white

HF6650 team power red/white/white

HF6648 team navy blue/white/white

HF6649 team royal blue/white/white

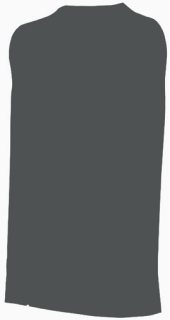
HU1704 team mid grey/white/white



CUSTOMIZE AT [MITEAM.COM](https://mitem.com)

# MITEAM BASKETBALL UNIFORMS

miadidas



M CLUTCH SQUAD JERSEY



M CLUTCH SQUAD SHORT



M N3XT JERSEY



M N3XT SHORT



M FLEX JERSEY



M FLEX SHORT



M PRACTICE TANK



M PRACTICE SHORT



M MiFAST TURN JERSEY



M MiFAST TURN SHORT



# UNIFORMS.ADICUSTOM.COM **BASKETBALL**

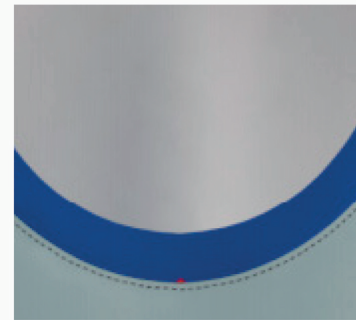


DIJERSEY & SHORT

- Shocklite Basketball Uniforms
- Two premium fabric options: 75 Cloth adiRev Poly & 87 Cloth adi 3 Mesh
- 29 Sublimated colors available & 5 pattern prints
- Alterations available



V-NECK OPTION



ROUND NECK OPTION



NEW SIDE PANEL PRINT



LOGO IN SHORT: WAISTBAND PLACKET



UNIFORMS.ADICUSTOM.COM

# NEW BASKETBALL UNIFORMS



M W Y D1 JERSEY



M W Y D1 SHORT



M W Y D2 JERSEY



M W Y D2 SHORT



M W Y D3 JERSEY



M W Y D3 SHORT



M W Y D4 JERSEY



M W Y D4 SHORT



M W Y D5 JERSEY



M W Y D5 SHORT



M W Y D6 JERSEY



M W Y D6 SHORT



M W Y RETRO JERSEY



M W Y RETRO SHORT







# DEFINITIONS APPAREL TECHNOLOGY

## AEROREADY

**BREATHE:** Our drying technology helps you feel light, confident and ready.

**BENEFIT:** Feel dry and confident so you can focus.

**FEATURES:** Moisture-wicking.

## COLD.RDY

**STAY WARM:** Our insulating technology keeps you feeling warm and dry when it's cold outside.

**BENEFIT:** Keeps you feeling sheltered against the cold.

**FEATURES:** Moisture-wicking. Breathable. Feel warm.

## HEAT.RDY

**KEEP COOL:** Our cooling technology keeps you feeling cool, dry and in the game.

**BENEFIT:** Keeps you feeling cool and dry when it's hot.

**FEATURES:** Moisture-wicking. Breathable. Feel cool.

## RAIN.RDY

**STAY DRY:** Our waterproof technology keeps the wet out so you feel dry when you play.

**BENEFIT:** Keeps you feeling dry in rain and snow.

**FEATURES:** Moisture-wicking. Breathable. Windproof. Waterproof.

## WIND.RDY

**GET SHELTERED:** Our windproof technology keeps the wind out so you feel warm and dry.

**BENEFIT:** Protects you from the wind's chill.  
**FEATURES:** Breathable. Water resistant. Windproof.

## techfit

**BENEFIT:** Maximum support.

**WHAT IT IS:** Compression fit.

**HOW IT WORKS:** Maximum support during high performance activity. Align your muscle's energy to produce explosiveness, speed and endurance.

## ▽CLIMACOOOL

**BENEFIT:** Dries fast and cools.

**WHAT IT IS:** Breathable fabrics with extra ventilation areas.

**HOW IT WORKS:** climacool® channels fresh air to the skin, reducing the build up of heat and sweat.

## ∠CLIMALITE

**BENEFIT:** Dries fast.

**WHAT IT IS:** Superlight fabric.

**HOW IT WORKS:** climalite® pulls sweat away from skin and moves it to outside of the fabric, where it can evaporate more quickly.

## ×CLIMAPROOF

**BENEFIT:** Breathable protection.

**WHAT IT IS:** Fabric with a membrane that stops wind or rain.

**HOW IT WORKS:** climaproof® fabrics have a coating that allows sweat vapor to escape from the inside, but keeps rain and wind outside.

## ▽CLIMACHILL

**BENEFIT:** Dries fast and cools.

**WHAT IT IS:** Fabric that dries incredibly fast and has great ventilation.

**HOW IT WORKS:** climachill® flat-weave fibers mean more of a surface area for incredibly fast drying and its structure creates a fabric that breathes like mesh.

## △CLIMAWARM

**BENEFIT:** Dries fast and warms.

**WHAT IT IS:** Insulation.

**HOW IT WORKS:** climawarm™ is dense enough to hold warm air, but has small channels that allow sweat vapor to escape.

## △CLIMAHEAT

**BENEFIT:** Dries fast and warms.

**WHAT IT IS:** Insulation featuring hollow fibers.

**HOW IT WORKS:** climaheat™ hollow fibers trap warm air without bulk and still allow sweat to evaporate.

## 🌐MADE WITH PARLEY OCEAN PLASTIC

**WHAT IT IS:** The garment is made with a yarn which contains 50% Parley Ocean Plastic — re-imagined plastic waste, intercepted on remote islands, beaches, coastal communities and shorelines, preventing it from polluting our ocean. This garment contains at least 40% recycled content in total.

## 🌐RECYCLED MATERIALS PRIME - PRIMEGREEN

**WHAT IT IS:** Made with a series of recycled materials, and at least 60% recycled content for apparel and 40% for accessories, these products represent just one of our solutions to help End Plastic Waste.



# DEFINITIONS FOOTWEAR TECHNOLOGY

## BOOST

**BENEFIT:** Endless energy.

**WHAT IT IS:** A revolutionary foam.

**HOW IT WORKS:** boost™ features thousands of visible energy capsules that store and unleash endless energy every time your foot hits the ground.

## Bounce

**BENEFIT:** Energized comfort.

**WHAT IT IS:** Instant step-in comfort and responsive cushioning.

**HOW IT WORKS:** Provides enhanced comfort and flexibility.

## Bounce+

**BENEFIT:** Energized comfort.

**WHAT IT IS:** Injected TPU Midsole. Enhanced comfort and flexibility.

**HOW IT WORKS:** Injected TPU removes the need for glue while still providing support and comfort.

## ADIPRENE+

**BENEFIT:** Responsive cushioning.

**WHAT IT IS:** A springy foam.

**HOW IT WORKS:** Adiprene®+ is cushioning that springs back, placed under the toes for a lively and comfortable push off.

## ADIPRENE

**BENEFIT:** Soft cushioning.

**WHAT IT IS:** An absorbent foam.

**HOW IT WORKS:** Adiprene® is placed under the heel, where it can soak up impact and soften landings.

## FORMOTION

**BENEFIT:** Smooth landing.

**WHAT IT IS:** Independently moving heel.

**HOW IT WORKS:** FORMOTION® smooths landings because the heel section moves independently, allowing the foot to adapt to heel strike in a natural way.

## cloudfoam

**BENEFIT:** Endless comfort.

**WHAT IT IS:** Ultra Cushioning foam.

**HOW IT WORKS:** Cloudfoam delivers all-day cushioning for endless comfort.

## TRAXION

**BENEFIT:** Great grip.

**WHAT IT IS:** Specially shaped studs.

**HOW IT WORKS:** TRAXION® studs are shaped for sport-specific movements, so you get grip and release in the right direction.

## LOCKWEB

**BENEFIT:** Enhanced support.

**WHAT IT IS:** Reinforced embroidery.

**HOW IT WORKS:** Reinforced embroidery throughout the upper to create a secure lightweight package.

## SPRINTFRAME

**BENEFIT:** Lightweight support.

**WHAT IT IS:** Lightweight frame.

**HOW IT WORKS:** SPRINTFRAME works like a race car chassis, adding lightweight structure and support to fast-moving feet.

## PRIMEFIT

**BENEFIT:** Adaptive fit.

**WHAT IT IS:** Superior seam free fit through a precisely engineered, adaptive, lightweight knit textile created in one step.

## TORSION SYSTEM

**BENEFIT:** Midfoot support.

**WHAT IT IS:** A bar between the toes and heel.

**HOW IT WORKS:** TORSION® SYSTEM helps shoes flex correctly, supporting the midfoot while allowing toes and the heel to move independently.

## IRONSKIN

**BENEFIT:** Durability.

**WHAT IT IS:** Durable outer shell.

**HOW IT WORKS:** Combines toughness, innovation and resilient protection in key areas. Offers impact absorption, and flat out refuge for athletes.

## ADIWEAR

**BENEFIT:** Durability.

**WHAT IT IS:** Rubber that stands up to abuse.

**HOW IT WORKS:** Adiwear™ is a high abrasion rubber that lasts even when dragged or slammed into the ground.

## ADITUFF

**BENEFIT:** Durability

**WHAT IT IS:** Strategically placed TPU material.

**HOW IT WORKS:** In areas of high wear and tear, ADITUFF offers abrasion resistance.



**BENEFIT:** Comfort and cushioning.

**WHAT IT IS:** Foam insole.

**HOW IT WORKS:** An advanced foam insole to use in high impact sports applications, with high resiliency for comfort and cushioning.



**WHAT IT IS:** High performance rubber.

**HOW IT WORKS:** For ultimate all-weather grip and traction. A high performance rubber outsole that grips the ground for better traction and a powerful push-off. So whatever weather you remain in control.

## MADE WITH PARLEY OCEAN PLASTIC

**WHAT IT IS:** The upper of these products are made with a high-performance yarn which contains at least 50% Parley Ocean Plastic — re-imagined plastic waste, intercepted on remote islands, beaches, coastal communities and shorelines, preventing it from polluting our ocean. The other 50% of the yarn is recycled polyester.

## MADE WITH RECYCLED MATERIALS - PRIME STANDARD

**WHAT IT IS:** Made with a series of recycled materials, and at least 60% recycled content, this product represents just one of our solutions to help End Plastic Waste.





# FIT GUIDE SIZE RANGE



MEN'S SIZING GUIDE			
SIZE	CHEST	HIP	THIGH
XS	32 1/2" - 34"	32" - 33 1/2"	20" - 20 1/2"
S	34 1/2" - 36"	34" - 36"	21" - 21 1/2"
M	36 1/2" - 39"	36 1/2" - 39"	22" - 23"
L	39 1/2" - 42 1/2"	39 1/2" - 42"	23 1/2" - 24"
XL	43" - 46 1/2"	42 1/2" - 45 1/2"	24 1/2" - 25 1/2"
2XL	47" - 51"	46" - 49"	26" - 27 1/2"
3XL	51 1/2" - 56"	49 1/2" - 53"	28" - 29"
4XL	56 1/2" - 61"	53 1/2" - 57"	29 1/2" - 30 1/2"

If your thigh width measures bigger than given range, you may want to size up in bottoms.

**CHEST:** Measurement around body, under arms, and over fullest part of the chest

**HIP:** Measurement around fullest part of the hip area

**THIGH:** Measurement around the fullest part of the thigh

**MEN'S INSEAM:** Measurement from crotch to the floor (without shoes)

\*Standard: 32" - Tall: 34" - X-Tall: 36"

\*Tall and X-Tall length options not available for all products and sizes. Order Tall and X-Tall tops and bottoms bases on your inseam length.



WOMEN'S SIZING GUIDE			
SIZE	BUST	HIP	THIGH
XXS	28" - 29 1/2"	31 1/2" - 33"	19" - 19 1/2"
XS	30" - 32"	33 1/2" - 35 1/2"	20" - 20 1/2"
S	32 1/2" - 34 1/2"	36" - 38"	21" - 22"
M	35" - 37"	38 1/2" - 40 1/2"	22 1/2" - 23"
L	37 1/2" - 40"	41" - 43"	23 1/2" - 24 1/2"
XL	40 1/2" - 43"	43 1/2" - 46"	25" - 26"
XXL	43 1/2" - 46 1/2"	46 1/2" - 49"	26 1/2" - 28"

If your thigh width measures bigger than given range, you may want to size up in bottoms.

**BUST:** Measurement around body, under arms, and over fullest part of the bust

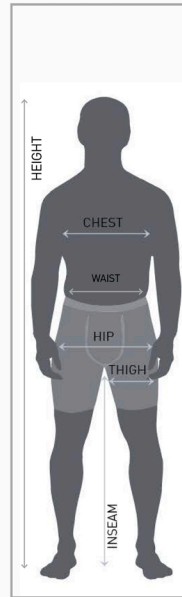
**HIP:** Measurement around fullest part of the hip area

**THIGH:** Measurement around the fullest part of the thigh

**WOMEN'S INSEAM:** Measurement from crotch to the floor (without shoes)

\*Standard: 31" - Tall: 33" - X-Tall: 35"

\*Tall and X-Tall length options not available for all products and sizes. Order Tall and X-Tall tops and bottoms bases on your inseam length.



YOUTH SIZING GUIDE						
SIZE	WAIST	CHEST	WAIST	HIP	INSEAM	HEIGHT
XS	22"-23"	24"-26"	22"-23"	26"-28"	23.5"	48.5"-50.5"
S	24"-25"	27"-29"	24"-25"	28.5"-30.5"	25.5"	53.5"-55"
M	26"-27"	30"-32"	26"-27"	31"-33"	28"	58"-60"
L	28"-29"	33"-35"	28"-29"	34"-36"	30"	62.5"-64.5"
XL	30"-31"	36"-38"	30"-31"	37"-38"	32.5"	67.5"-69.5"

**CHEST:** Measurement around body, under arms, and over fullest part of the chest

**WAIST:** Measurement around the smallest part of the torso area

**HIP:** Measurement around fullest part of the hip area

**INSEAM:** Measurement from crotch to the floor (without shoes)

**HEIGHT:** Measurement from the top of the head to the floor (without shoes)

# FW22



PRODUCT INFORMATION  
IN THIS PDF IS SUBJECT TO CHANGE

VISIT THE **B2B WEBSITE**  
FOR THE MOST CURRENT INFORMATION

## GENERAL TERMS AND CONDITIONS OF SALE

of adidas America, Inc. (the "Company")

### Orders

These General Terms and Conditions of Sale (the "Terms and Conditions") apply to and form an integral part of all quotations and offers made by the Company, all acceptances, acknowledgements (including a functional acknowledgement sent on receipt of an electronic order) and confirmations by the Company of any orders by Customer, and any agreements regarding the sale by Company and purchase by Customer of product and services. The Company's acceptance of orders is based upon these Terms and Conditions. All purchase orders or other procurement documents (including purchase order confirmations, compliance guides, and routing and logistics guides) submitted by Customer shall be governed by these Terms and Conditions. To the extent that any provisions contained in the Customer's purchase order or other procurement documents conflict with or would change, modify or supplement these Terms and Conditions, these Terms and Conditions will control, even if Company does not expressly contest such provisions and any such conflicting provisions shall be wholly inapplicable to any sale made by Company to Customer and shall not be binding in any way on Company. Without limiting the foregoing, Company further rejects terms and conditions inconsistent with, different from or additional to those contained herein which are contained on any website of Customer for which access is conditioned on acceptance of such terms and conditions. A functional acknowledgement sent on receipt of an electronic order does not constitute acceptance of electronic data interchange orders. Customer's order of the product will manifest Customer's agreement to these Terms and Conditions.

### Order Requirements

Order entry date will determine earliest requested delivery date, as established and communicated by the Company. Earliest requested delivery date may vary by order type such as, but not limited to, [a] future, [b] fill-in, and [c] closeout orders. Customer delivery dates that do not meet requirements may be adjusted at the Company's discretion.

Orders must also meet minimum quantity requirements by product division (e.g., footwear) as established and communicated by the Company, unless otherwise agreed to between Company and Customer.

Orders will be managed through a confirmation process where Customer requested delivery dates are evaluated against Company supply availability [a] at order integration and [b] up to seventy-five (75) days prior to the delivery date. Customer requested delivery dates may be adjusted at Company's discretion through this confirmation process.

### Back Orders

Back orders are shipped FOB shipping point. Back orders will not be created for fewer than four[4] pieces.

### Allocations

Orders and shipments are subject to allocation by Company in times of product shortages as determined by Company in its sole discretion.

### Cancellations

Requests to cancel orders must be made in writing no later than thirty (30) days before the start ship date and are subject to Company's approval. All cancellations and refusals may be subject to a restocking/processing fee. Cancellations exceeding ten percent (10%) of futures bookings will result in evaluation of future discounts. Confirmed container and direct ship orders are not cancellable.

### Changes in Orders

Changes in orders will be considered only [a] within thirty (30) days of order submission in the case of container or dedicated orders, or [b] no later than forty-five (45) days prior to the first shipment date indicated on the order in the case of warehouse orders.

### Pricing

All pricing error claims must be submitted to Company within thirty (30) days of the applicable invoice due date. All pricing error claims submitted within this timeframe will be reviewed and approved or denied based on the merits of the claim at the sole discretion of Company. All pricing error claims submitted beyond this timeframe will be automatically denied. Pricing error claims that are not accompanied by a corresponding invoice number will be denied. No employee, company representative or any other party other than an officer of Company is authorized to alter Company's pricing terms. All prices are subject to change without notice. Orders will be billed at prices prevailing at the time of order as reflected on Company's then current price lists.

### Shipping

Freight terms are FOB shipping point for all domestic shipments and FOB port for direct shipments, unless otherwise approved in writing by Company. The Company cannot guarantee that all orders placed by a Customer that meet adidas' direct shipment criteria will be processed as a direct shipment. In that circumstance, the order will receive FOB shipping point freight terms. Customer assumes all risk of loss upon delivery of products by Company to Customer or Customer's representative. All delivery indications are estimates only. In no event will Company assume any liability, consequential or otherwise, as a result of Company's failure to deliver product in accordance with indicated delivery schedules. Company will reject any late shipping fees unless approved by the Company in advance in writing. Delivery of part of an order does not obligate Company to make further deliveries, and partial deliveries will be billed when made.

### Terms of Sale

Payment terms are net thirty (30) days from invoice date, unless otherwise specified. Any amounts not paid within net terms are subject to a service charge of 1-1/2 % per month or the maximum rate permitted by law, whichever is lower. No cash or prompt payment discounts will be allowed on any invoice paid past the invoice discount period. Customer shall not set off against or deduct from any amounts due to Company hereunder all or any part of any amounts owed or alleged to be owed by Company to Customer. If Company, in its sole discretion, at any time is unsatisfied with Customer's financial responsibility, or feels it needs further assurance that Customer will pay for outstanding orders, Company shall be entitled to require Customer to pay for its orders on a cash-in-advance basis. If Customer is in default under any agreement with Company, or fails to comply with any written rule or policy of Company, including these Terms and Conditions, Company shall have the right, without prejudice to any other legal remedy, to cancel all outstanding orders. Company shall have the right to set off and deduct any amounts due to Company from Customer against and from any amounts owed or allegedly owed by Company to Customer.

### General Returns Policy

All returns must be pre-approved by Company Returns Department. Requests for approval of returns must be received in writing by the Returns Department within sixty (60) days of the applicable invoice date.

All returns must be accompanied by a completed Return Authorization Form, available from the Returns Department, and comply with all instructions provided by the Returns Department, including, but not limited to, a maximum number of articles per Return Authorization as determined by the Company. The Return Authorization Number must be clearly marked on the outside of the shipping carton and/or on the face of the shipping documents. Any returns not bearing the Return Authorization Number or not accompanied by a Return Authorization Form will be shipped back to Customer at Customer's expense.

Returned goods must be physically received at the address listed on the Return Authorization within sixty (60) days of the Return Authorization Form date. Product returned after that deadline or to a different address than listed on the Return Authorization Form will be refused and shipped back to Customer at Customer's expense.

Customer accommodation returns of a lower grade quality, or that require reboxing, rebagging or removal of value-added services, may receive only partial credit. Determination of the grade quality is at the sole discretion of Company. Display models cannot be returned, and will not receive credit if included in a Return Authorization.

All returns must be shipped prepaid at Customer's expense. In addition, Customer will be responsible for any handling charges incurred by Company as a result of a return.

### Defective Returns Policy

Whether product is defective will be determined in Company's sole discretion. If Company determines that product has a manufacturing defect, Company will reimburse Customer for reasonable freight charges upon receipt of a freight bill. Returns that the Company determines do not have a manufacture's defect may receive only partial or no credit.

### Loss/Damage in Transit

Company will not be responsible for goods lost or damaged in transit. Any damage or shortage in carton count must be noted on the carrier's delivery receipt and reported directly to the delivering carrier.

Concealed Shortages/Overages

In order to make a claim for any shortages/overages in unopened cartons, such claim must be reported to Company's Credit Department in writing within thirty (30) days of the applicable invoice due date. All claims must be accompanied by an invoice, carton identification number and shipping order number and an itemization of all shortages/overages by product code, size, and quantity. Claims only shall be made in an amount equal to the invoiced value of the goods which were not received. Company will reject claims for other amounts, such as late shipment charges.

### Packing Errors

In order to make a claim for packing errors, such claim must be reported to the Company's Credit Department in writing within thirty (30) days of the applicable invoice due date. All claims must contain the carton identification number.

### Chargebacks and Value Added Services

Chargebacks, including for claims that mutually agreed upon business rules (such as lead times on time order placement and call off) were not followed by Company, will not be accepted by Company unless agreed to in writing between Company and Customer. Furthermore, Company only will agree to chargebacks, including for a value-added service (VAS), that reflect actual direct costs incurred by Customer and will not accept punitive or administrative chargebacks. Even for chargebacks agreed upon in writing by Company, if Customer fails to provide sufficient documentation to support the chargebacks, Company may reject the chargebacks and/or assess a reasonable research fee for time spent to research the chargebacks.

All VAS must be agreed upon by the parties in writing before the Company will provide such service. The Company will charge Customer for any VAS that impact unit cost and time, such as garment on hanger, supplemental ticketing, and box and inflate, unless otherwise agreed to in writing between Company and Customer. Box and inflate VAS is only available on direct or Customer dedicated shipments.

### Customer's Covenants

Customer agrees to [a] render prompt, effective and courteous service with respect to the sale of Company goods, including all services to which a retail customer of Company

goods is entitled; [b] vigorously and aggressively encourage the retail sale of Company goods; [c] maintain the minimum sales volume established by Company from time to time; [d] limit closeout volume to an established minimum as communicated by the Company; [e] establish and maintain, independently and in conjunction with Company, advertising and marketing policies and methods that emphasize the high-quality characteristics of Company's goods; [f] provide clean, modern and adequate retail outlet(s) necessary for proper merchandising and selling of Company goods; [g] attend presentations conducted by Company sales representatives for the purpose of acquiring knowledge about the technical and other aspects of Company products; and [h] notify Company's Credit Department in writing prior to any change in Customer's legal organization, method of doing business or any other information stated in the credit application filed by Customer.

### Trademark & Intellectual Property Rights

Customer acknowledges that Company is the owner of all intellectual property associated with Company products, including all trademarks, copyrights, patents and trade secrets otherwise owned by Company (the "Intellectual Property"). Customer obtains no rights to the Intellectual Property. Customer obtains no ownership or license rights to Company's trademarks, trade names, logos or designs ("Trademarks") or copyrights except as specifically stated in these Terms and Conditions. Customer may not use the Trademarks, or any marks similar to the Trademarks, in any way without Company's express written consent. Company claims a copyright in the written materials delivered to Customer under these Terms and Conditions, including any designs, drawings and logos. Company grants to Customer a royalty-free right and license to use and display Company's Trademarks and copyrights and the product information, specifications, data, and images provided by Company, but only to the extent required for the Customer to promote and sell Company's products under these Terms and Conditions.

### Restrictions on Sales/Purchases/Assignment

Customer will not [a] sell, transfer or assign its right as an authorized Company dealer without the express written consent of Company; [b] sell or otherwise transfer or transship Company goods to another retailer, distributor, or broker; or [c] purchase Company products from any source other than Company. Additionally, Customer may resell Company products [apparel, footwear and accessories] only through the outlet location(s) specified in the Credit Application or subsequently approved in writing by Company. Any other form of resale of Company products other than as specified above – including sales on any marketplace site - shall be prohibited without the prior written approval of Company. Such prohibitions shall include, but not limited to, the following: Customer may not resell Company products (visible or encapsulated) through the mail, by catalog, by phone, or by any electronic means (regardless of the medium and including the Internet). Written approval to sell through other means, if granted, is limited to sales and deliveries within the United States. Further, Customer may not advertise Company products through any electronic means unless such advertisement directs purchase and fulfillment of Company products specifically at the location(s) approved in the Credit Application or subsequently approved in writing by Company. Violations of the aforementioned conditions may result in the immediate termination of Customer's account and cancellation of existing orders. Further, if Customer opens or acquires additional retail outlet(s), Customer must notify and receive written approval from their sales representative before any additional or new outlet or franchise can be opened. Company's approval of a new outlet or franchise does not guarantee Company approval of any other outlet or franchise location.

### No Transshipment/Diversion of Merchandise and No Sale of Counterfeit Product

To enhance informed selection and promote product image, Company only sells to selected retail outlets on the express condition that such outlets may not: [1] resell to any person or entity who is not also the final user or consumer or [2] sell or purchase any counterfeit Company product. Accordingly, the resale, transshipment or any form of diversion of Company product to anyone other than the final consumer and the sale or purchase of any counterfeit Company product are expressly prohibited. Any such activity may subject the violator to termination of its account and/or cancellation of orders and shall constitute a breach of the contract of sale for which Company may seek the appropriate legal remedies, including money damages or injunctive relief.

### Termination

The Company may, at any time and in its sole discretion, immediately terminate or suspend its relationship with Customer. Termination includes but is not limited to cancelling or refusing to ship any orders placed by Customer and terminating Customer's ability, if any, to purchase goods on credit or otherwise.

### Claims

All claims must be submitted to the Company within thirty (30) days of the applicable invoice due date unless otherwise specified within this document or detailed on a separate binding agreement made by both parties. Any claims received after this date or without an accompanied invoice number will not be considered.

### Limited Warranty

Company warrants that its products, at the time of shipment, are free from defects in workmanship and materials. THE WARRANTY DESCRIBED IN THIS SECTION SHALL BE IN LIEU OF ANY OTHER WARRANTY, EXPRESS OR IMPLIED. ALL GOODS PURCHASED PURSUANT UNDER THESE TERMS AND CONDITIONS ARE SOLD AS-IS. COMPANY HEREBY DISCLAIMS ANY AND ALL IMPLIED WARRANTIES, INCLUDING THE WARRANTIES OF MERCHANTABILITY AND FITNESS FOR A PARTICULAR PURPOSE AND THOSE THAT MAY ARISE BY COURSE OF DEALING, COURSE OF PERFORMANCE OR USAGE OF TRADE. Customer's remedies are exclusively limited to replacement of or credit for any defective product (at the sole option of Company) but such replacement or credit shall be made only if the Customer complies with the terms and conditions set forth herein on general returns and defective returns.

### Limitation on Damages; Statute of Limitations

COMPANY WILL NOT BE LIABLE FOR ANY LOSS OF PROFIT, INTERRUPTION OF BUSINESS OR ANY OTHER SPECIAL, CONSEQUENTIAL OR INCIDENTAL DAMAGES SUFFERED OR SUSTAINED BY CUSTOMER. Any action by Customer related to these Terms and Conditions, including for breach of contract, must be commenced within one year from the date of delivery of the goods.

### Security Agreement

To secure payment and performance of all of Customer's current and future obligations to Company, Customer grants to Company a security interest in all inventory and equipment that Customer has purchased or will at any time in the future purchase from Company and in all accounts, other forms of receivables, documents, instruments, returns and general intangibles that are related in any way to such inventory and equipment. A copy of Customer's credit application may be filed as a financing statement in which case Customer is the debtor and Company is the secured party. If, in Company's judgment, Customer loses the financial ability to pay and perform all of Customer's current and future obligations to Company under these Terms and Conditions, then, upon demand by Company, Customer will return all Collateral to Company for disposition in accordance with the Uniform Commercial Code.

### Entire Agreement

Customer's credit application along with these Terms and Conditions contain the entire understanding between the parties. Customer acknowledges that there are no terms, conditions, warranties or representations from or by Company other than those contained in the credit application and these Terms and Conditions.

### Modifications

No supplement, modification or amendment of Customer's credit application, these Terms and Conditions or any marketing agreements related to the sale of product will be binding unless executed in writing by the CFO and Vice President of Sales of Company. These Terms and Conditions are subject to change by Company without prior notice.

### Customer Terms and Conditions

The Company rejects Customer terms and conditions, including those contained in purchase order confirmations, compliance guides, and routing and logistics guides, unless Company specifically agrees to such terms in writing.

### Customer Routing and Logistic Requirements

Company will not be bound to terms, directives or requirements set forth by Customer through routing and logistic guides unless Company has agreed in writing to such terms, directives or requirements. In addition, Customer may incur charges for value added services, such as labeling, ticketing, and special packaging. Routing and logistics guides should be directed to the Compliance Department located at Company's Customer Satisfaction office in Spartanburg, South Carolina.

### Severability; Waiver; Construction

Any portion of these Terms and Conditions that are found to be unenforceable will not invalidate the remainder of these Terms and Conditions. Any delay in enforcing or any failure to enforce any provision of these Terms and Conditions will not be deemed a waiver of any other or subsequent breach of these Terms and Conditions unless such waiver is in writing and signed by Company. Caption headings are for convenience of reference only and will not affect the interpretation of these Terms and Conditions. Ambiguous terms will be construed without regard to authorship.

### Confidentiality

Except as required by law, Customer will not disclose Company's Confidential Information to any third party, directly or indirectly, without Company's prior, written consent. Confidential Information is described generally as any and all current and future product information, roadmap, technical or financial information and other business information including, but not limited to reports, plans, documents, drawings, machines, tools, models, patent disclosures, samples, and materials, and Request For Proposals that may be disclosed between the parties whether in written, oral, electronic, website-based, or other form, designated by Company in writing as confidential. If Customer is required by any law or regulation, judicial or administrative process to disclose Confidential Information, Customer shall promptly notify Company so that Company has a reasonable opportunity to oppose such requirement or process. Customer shall promptly notify Company of any actual or suspected misuse or unauthorized disclosure of the Confidential Information.

### Force Majeure

delivery date is specified, that date will be extended to the extent that delivery is delayed by reason of fire, flood, war, riot, strike, natural disaster, or any other event beyond Company's reasonable control and if, as a result of such a delay, the goods ordered are unavailable, Company may substitute comparable goods. Additionally, in the event of a freight strike beyond Company's control, Company may ship goods via another carrier without being subject to any penalties.

### Assignment

Company may assign this contract to a parent, subsidiary, or affiliated firm, or to another entity in connection with the merger, sale or transfer of all or substantially all of its business. Subject to these restrictions, the provisions of the contract shall be binding upon and inure to the benefit of the parties, their successors, and permitted assigns.

### Costs and Attorney Fees; Choice of Law; Consent to Jurisdiction

For collection matters: [1] Customer will pay such costs, collection agency commission, expenses and reasonable attorney fees (including, without limitation, at trial and on appeal) as Company may incur in any manner of collection of any sums past due; [2] Oregon law [without resort to its choice of law provisions] will govern; and [3] Customer consents to the nonexclusive jurisdiction of and venue in any state or federal court located in the state of Oregon or South Carolina.

For all, non-collection matters: [1] these Terms and Conditions shall be governed and enforced in accordance with the laws of the state of Oregon and [2] Customer consents to the exclusive jurisdiction and venue in any state or federal court located in the state of Oregon.

**adidas**

**CUSTOMER OPERATIONS**

**1.877.409.0628**

**WWW.ADIDAS.COM**