



# SOFTBALL

*AUGUSTA SPORTSWEAR BRANDS*





# TIARE JENNINGS

All-American NCAA Champion

Tiare represents what ASB softball is all about: passion, commitment and excellence on the Diamond. Enjoy selecting from our best ever 2024 Softball collection.

*Tiare Jennings #23*

**ASB**

**RUSSELL  
ATHLETIC**



# LINE UP

SOFTBALL JERSEY .....	6
SOFTBALL PANTS.....	28
OUTERWEAR.....	33
HEADWEAR .....	42
ACCESSORIES .....	46
BAGS .....	48
DECORATION.....	51

## ICON KEY



**Dry-Excel™**  
Moisture evaporation  
and wicking fabric



**Water Resistant**  
Resists rain & water to keep  
the body protected & dry



**Color Secure®**  
Color Secure® helps  
prevent dye migration



**Moisture Management**  
Fabric wicks moisture away  
keeping the body cool & dry



**4-Way Stretch**  
Stretch properties allow  
for increased mobility



**Odor Resistant**  
Odor Resistant technology  
keeps garments fresher longer



**UPF**  
Garment protects against  
harmful UV rays



NEW ARRIVALS



228384

228372



756VTX



R16LSX



RS5DBX

ONLINE



# OFF FIELD

SOFTBALL | NEW PRODUCTS



6970

# FIELD



223730



R01DWM





Slider



LADIES FREESTYLE SUBLIMATED  
FAUX FULL-BUTTON JERSEY

**745VTX** Ladies S-3XL MSRP 118.00  
**745VTG** Girls S-XL MSRP 110.20

- 92% polyester/8% spandex engineered with ventilated stretch mesh for the ultimate combination of lightweight and breathability
- Garment protects against the sun with 20+ UPF
- Dri-Power® Moisture Wicking Technology
- Tag-free label
- Faux full button jersey
- Buttons spaced for easy embellishment
- Set-in sleeves
- Fishtail bottom



Shortstop



Lite Chevron





For available design lines visit [augustasportswear.com/sublimation](http://augustasportswear.com/sublimation)

6227



Back

Lite Chevron



LADIES FREESTYLE SUBLIMATED FULL-BUTTON JERSEY

**R45VTX** Ladies S-3XL MSRP 108.40  
**R45VTG** Girls S-XL MSRP 107.40

- 92% polyester/8% spandex mesh
- Garment protects against the sun with 20+ UPF
- Dri-Power® Moisture Wicking Technology
- Tag-free label
- Buttons spaced for easy embellishment
- Set-in sleeves
- Contoured bottom



Strikeout

746LGX



Shortstop





SUM736  
756VTX



All Over  
746LGX



Back

Breaking Ball  
756S2X



**NEW**

**LADIES FREESTYLE  
SUBLIMATED TWO-BUTTON  
PERFORMANCE MESH  
JERSEY**

**756VTX** Ladies  
S-3XL MSRP 87.20

- 92% polyester/8% spandex engineered with lightweight, breathable stretch fabric for comfort and mobility
- Garment protects against the sun with 15+ UPF
- Dri-Power® Moisture Wicking Technology
- Tag-free label
- Set-in sleeves
- Contoured bottom

**LADIES FREESTYLE  
SUBLIMATED TWO-BUTTON  
JERSEY**

**756S2X** Ladies  
S-3XL MSRP 80.60

- 91% polyester/9% spandex engineered with lightweight, breathable stretch fabric for comfort and mobility





For available design lines visit  
[augustasportswear.com/sublimation](http://augustasportswear.com/sublimation)



6223



Stars & Stripes



LADIES FREESTYLE SUBLIMATED  
 TWO-BUTTON JERSEY

**228332** Ladies S-3XL MSRP 64.60

**228432** Girls S-XL MSRP 63.60

- Dry-Excel™ 100% polyester wicking smooth knit
- Garment protects against the sun with 50+ UPF
- Tag-free label
- Raglan sleeves
- Contoured bottom



Stinger



Fast Pitch





P500



Back

Fully Reversible

Stinger



**LADIES FREESTYLE SUBLIMATED LIGHTWEIGHT REVERSIBLE V-NECK JERSEY**

**228371** Ladies S-3XL MSRP 66.00

- 5.2 ounce, lightweight 96% polyester/4% spandex single-ply reversible knit
- Garment protects against the sun with 50+ UPF
- Set-in sleeves

Fully Reversible



A-Stripe

Fully Reversible



Fast Pitch



746LGX





For available design lines visit [augustasportswear.com/sublimation](http://augustasportswear.com/sublimation)



598V



A-Stripe



Fully Reversible



### LADIES FREESTYLE SUBLIMATED REVERSIBLE V-NECK JERSEY

**228334** Ladies S-3XL MSRP 66.60

- Dry-Excel™ 100% polyester single ply reversible closed hole mesh
- Garment protects against the sun with 50+ UPF
- Tear away label
- Set-in sleeves



Stinger



Fast Pitch





P500

Cycle  
7D7VTX

Cycle  
746LGX

Clubhouse  
7D7S2X

738LGX



Back



**NEW**

**LADIES FREESTYLE SUBLIMATED V-NECK PERFORMANCE MESH JERSEY**

**7D7VTX** Ladies S-3XL MSRP 81.00

- 92% polyester/8% spandex engineered with lightweight, breathable stretch fabric for comfort and mobility
- Garment protects against the sun with 15+ UPF
- Dri-Power® Moisture Wicking Technology
- Outside locker label
- Raglan cap sleeves

**LADIES FREESTYLE SUBLIMATED V-NECK JERSEY**

**7D7S2X** Ladies S-3XL MSRP 75.00

- 91% polyester/9% spandex engineered with lightweight, breathable stretch fabric for comfort and mobility



# Core

For available design lines visit [augustasportswear.com/sublimation](http://augustasportswear.com/sublimation)



SOFTBALL | FREESTYLE SUBLIMATION



Back



**NEW** LADIES FREESTYLE SUBLIMATED TURBO COOLCORE® INTERLOCK V-NECK JERSEY

<b>228384</b>	Ladies	XS-3XL	MSRP 52.00
<b>228484</b>	Girls	S-XL	MSRP 51.00

- Dry-Excel™ 100% polyester Coolcore® interlock smooth knit
- Garment protects against the sun with 30+UPF
- Tag-free label
- Raglan sleeves

Shutout  
228372



Shutout

Coolcore® is engineered to distribute moisture quickly throughout the garment. As the moisture spreads it dries faster to keep you cool and comfortable, and has UPF 50 sun protection.



Slider  
7D6S2X



7S4DBX



Grand Slam



Breaking Ball



**FREESTYLE SUBLIMATED  
SLEEVELESS JERSEY**

**7D6S2X** Ladies S-3XL MSRP 66.00

- 91% polyester/9% spandex engineered with lightweight, breathable stretch fabric for comfort and mobility
- Garment protects against the sun with 15+ UPF
- Dri-Power® Moisture Wicking Technology
- Tag-free label
- Scooped neck





For available design lines visit  
[augustasportswear.com/sublimation](http://augustasportswear.com/sublimation)



Racerback



**NEW**

LADIES FREESTYLE SUBLIMATED  
 TURBO LIGHTWEIGHT SLEEVELESS  
 JERSEY

<b>228370</b>	Ladies	S-3XL	MSRP 34.00
<b>228470</b>	Girls	S-XL	MSRP 33.00

- Dry-Excel™ 100% polyester wicking knit
- Garment protects against the sun with 45+ UPF
- Tag-free label





LADIES FREESTYLE SUBLIMATED  
PIN-DOT SLEEVELESS JERSEY

**228354** Ladies S-3XL MSRP 56.00  
**228454** Girls S-XL MSRP 55.00

- Dry-Excel™ polyester Pin-Dot wicking mesh
- 100% polyester pinhole mesh back
- Garment protects against the sun with 50+ UPF
- Racerback styling
- Contoured bottom

A-Stripe



A Stripe



Classic  
Color  
Block

Classic  
Color  
Block



LADIES FREESTYLE SUBLIMATED  
SHORT SLEEVE PIN-DOT JERSEY

**228350** Ladies S-3XL MSRP 65.00  
**228450** Girls S-XL MSRP 64.00

- Dry-Excel™ polyester Pin-Dot wicking mesh front panel
- Garment protects against the sun with 50+ UPF
- Garment protects against the sun with 50+ UPF
- Set-in sleeves
- Contoured bottom



LADIES FREESTYLE SUBLIMATED SHORTS

**228355** Ladies S-3XL MSRP 59.00  
**228455** Girls S-XL MSRP 58.00

- Dry-Excel™ polyester Pin-Dot wicking mesh
- Garment protects against the sun with 50+ UPF
- Covered elastic waistband with inside drawcord

Fast Pitch



Classic  
Color  
Block



LADIES FREESTYLE SUBLIMATED  
TURBO LIGHTWEIGHT JERSEY

**228335** Ladies S-3XL MSRP 58.00  
**228435** Girls S-XL MSRP 57.00

- Dry-Excel™ 100% polyester smooth wicking knit body
- 100% polyester pinhole mesh back
- Garment protects against the sun with 50+ UPF
- Tag-free label
- Set-in sleeves
- Contoured bottom



LADIES FREESTYLE SUBLIMATED  
LIGHTWEIGHT SHORTS

**228336** Ladies S-3XL MSRP 51.40  
**228436** Girls S-XL MSRP 50.40

- Dry-Excel™ 100% polyester smooth wicking knit body
- Garment protects against the sun with 50+ UPF
- Covered elastic waistband with inside drawcord



For available design lines visit  
[augustasportswear.com/sublimation](http://augustasportswear.com/sublimation)



CUTTER+ COLLECTION



SOFTBALL | FULL-BUTTON

COORDINATING ADULT/YOUTH  
6909 | 6910



Back



LADIES CUTTER+ FULL BUTTON JERSEY

<b>6919</b>	Ladies	XS-2XL	MSRP 30.00
<b>6920</b>	Girls	S-L	MSRP 29.00

- 96% polyester/4% spandex lightweight knit with color secure® technology that helps prevent dye migration
- Garment protects against the sun with 50+ UPF
- Micro-Interlock smooth 100% polyester knit side inserts
- Tear away label
- Buttons spaced for easy embellishment
- Set-in sleeves
- Dropped tail



BLACK/  
WHITE  
420

COLUMBIA BLUE/  
WHITE  
293

NAVY/  
WHITE  
301

PURPLE/  
WHITE  
450



ROYAL/  
WHITE  
280

SCARLET/  
WHITE  
408

WHITE  
005





Back

6228

COORDINATING  
ADULT/YOUTH  
6905 | 6906



LADIES CUTTER+ HENLEY JERSEY

**6917** Ladies XS-2XL MSRP 25.00  
**6918** Girls S-L MSRP 24.00

- 96% polyester/4% spandex lightweight knit with color secure® technology that helps prevent dye migration
- Garment protects against the sun with 50+ UPF
- Tear away label
- Raglan sleeves



1298



BLACK/WHITE 420    COLUMBIA BLUE/WHITE 293    DARK GREEN/WHITE 438    MAROON/WHITE 380    NAVY/WHITE 301



PURPLE/WHITE 450    ROYAL/WHITE 280    SCARLET/WHITE 408    TEAL/WHITE 331    VEGAS GOLD/WHITE 250



WHITE/BLACK 226    WHITE/GRAPHITE 751    WHITE/NAVY 221    WHITE/ROYAL 220    WHITE/SCARLET 235



WHITE/SILVER E64



ATTAIN COLLECTION

6701



COORDINATING  
ADULT/YOUTH

1565 | 1566



Back



LADIES ATTAIN TWO-BUTTON JERSEY

1567 Ladies XS-3XL MSRP 14.80

- 100% polyester wicking knit with color secure® technology that helps prevent dye migration
- Tear away label
- Raglan sleeves
- Longer length



BLACK 080	COLUMBIA BLUE 089	DARK GREEN 035	GOLD 025	GRAPHITE 059
--------------	-------------------------	----------------------	-------------	-----------------



KELLY 030	MAROON 745	NAVY 065	ORANGE 029	POWER BLUE 812
--------------	---------------	-------------	---------------	----------------------



PURPLE 747	RED 040	ROYAL 060	SILVER 099	WHITE 005
---------------	------------	--------------	---------------	--------------





6227

6701



Back

### LADIES CLASSIC V-NECK JERSEY



- 100% polyester double knit with color secure® technology that helps prevent dye migration
- Dri-Power® Moisture Wicking Technology
- Tag-free label
- Outside locker label
- Raglan sleeves
- Contoured bottom

**R01X3X** Ladies  
S-2XL MSRP 31.80

### COORDINATING ADULT/YOUTH

**R01X3M | R01X3B**



AQUA/  
BLACK/  
WHITE  
09R

BURNT  
ORANGE/  
BLACK/  
WHITE  
07R

COLUMBIA  
BLUE/  
NAVY/  
WHITE  
614

GOLD/  
BLACK/  
WHITE  
249

MAROON/  
STEEL/  
WHITE  
08R

NAVY/  
TRUE RED/  
WHITE  
04R

NAVY/  
STEEL/  
WHITE  
06R

PURPLE/  
BLACK/  
WHITE  
497

WHITE/  
TRUE RED/  
WHITE  
03R

WHITE/  
NAVY/  
TRUE RED  
10R

WHITE/  
BLACK/  
WHITE  
132

WHITE/  
ROYAL/  
WHITE  
137

223846



SOFTBALL | V-NECK



Front



LADIES FULL FORCE JERSEY

1682 Ladies S-2XL MSRP 28.40

- 100% polyester propelit micromesh wicking knit
- Tag-free label
- Double layer V-neck collar
- Set-in sleeves



BLACK/WHITE 420

NAVY/WHITE 301

ROYAL/WHITE 280



SCARLET/WHITE 408

WHITE/GRAPHITE 751





Back



COORDINATING  
ADULT/YOUTH  
6907 | 6908



LADIES CUTTER+ V-NECK JERSEY

**6915** Ladies XS-2XL MSRP 20.00  
**6916** Girls S-L MSRP 19.00

- 96% polyester/4% spandex lightweight knit with color secure® technology that helps prevent dye migration
- Garment protects against the sun with 50+ UPF
- Tear away label
- Raglan sleeves





6701



COORDINATING  
ADULT/YOUTH

1517 | 1518

Available in Girls



LADIES CUTTER JERSEY

<b>1522</b>	Ladies	S-2XL	MSRP 16.40
<b>1523</b>	Girls	S-L	MSRP 15.40

- 100% polyester wicking knit with color secure® technology that helps prevent dye migration
- 92% polyester/8% spandex wicking pinhole mesh underarms
- Tag-free label
- Raglan sleeves
- Contoured bottom







Back



LADIES CUTTER+  
SLEEVELESS JERSEY

<b>6913</b>	Ladies	XS-2XL	MSRP 22.00
<b>6914</b>	Girls	S-L	MSRP 21.00

- 96% polyester/4% spandex lightweight knit with color secure® technology that helps prevent dye migration
- Garment protects against the sun with 50+ UPF
- Tear away label
- Contoured bottom



BLACK/  
WHITE  
420

COLUMBIA BLUE/  
WHITE  
293

DARK GREEN/  
WHITE  
438



GRAPHITE/  
WHITE  
R04

NAVY/  
WHITE  
301

PURPLE/  
WHITE  
450



ROYAL/  
WHITE  
280

SCARLET/  
WHITE  
408

TEAL/  
WHITE  
331

WHITE  
005



6226



1298



Back



LADIES DYNAMITE JERSEY

<b>312162</b>	Ladies	S-2XL	MSRP 26.80
<b>312163</b>	Girls	S-L	MSRP 25.80

- 92% polyester/8% spandex wicking pinhole mesh
- Tag-free label



ATHLETIC GOLD/ BLACK/ WHITE 657	BLACK/ BLACK/ WHITE 529	COL. BLUE/ BLACK/ WHITE 519	FOREST/ BLACK/ WHITE 148	MAROON/ BLACK/ WHITE 524	NAVY/ SILVER GREY/ WHITE 515	ORANGE/ BLACK/ WHITE 322	PURPLE/ BLACK/ WHITE 497	RASPBERRY/ BLACK/ WHITE 593	ROYAL/ BLACK/ WHITE 526	SCARLET/ BLACK/ WHITE 952	TEAL/ BLACK/ WHITE 332	WHITE/ BLACK/ WHITE 132
---	----------------------------------	--------------------------------------	-----------------------------------	-----------------------------------	---------------------------------------	-----------------------------------	-----------------------------------	--------------------------------------	----------------------------------	------------------------------------	---------------------------------	----------------------------------





6701



Back



### LADIES ROVER JERSEY

<b>1687</b>	Ladies	S-2XL	MSRP 25.00
<b>1688</b>	Girls	S-L	MSRP 24.00

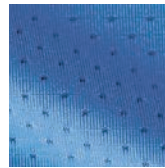
- 100% polyester wicking smooth knit with color secure® technology on front and back panels that helps prevent dye migration
- 90% polyester/10% spandex wicking mesh back yoke and side inserts with color secure® technology
- Tag-free label



BLACK/ WHITE 420	COLUMBIA BLUE/ WHITE 293	DARK GREEN/ WHITE 438	GRAPHITE/ WHITE R04	NAVY/ WHITE 301	POWER PINK/ WHITE 468
------------------------	-----------------------------------	--------------------------------	---------------------------	-----------------------	--------------------------------



PURPLE/ WHITE 450	ROYAL/ WHITE 280	SCARLET/ WHITE 408	SILVER/ WHITE 254	TEAL/ WHITE 331	WHITE 005
-------------------------	------------------------	--------------------------	-------------------------	-----------------------	--------------



Pinhole mesh



### LADIES TORNADO JERSEY

<b>1355</b>	Ladies	S-2XL	MSRP 25.80
<b>1356</b>	Girls	S-L	MSRP 24.80

- 92% polyester/8% spandex wicking pinhole mesh
- Tag-free label



BLACK/ GOLD/ WHITE 418	COL. BLUE/ NAVY/ WHITE 614	LIME/ BLACK/ WHITE 680	NAVY/ GOLD/ WHITE 516	ORANGE/ BLACK/ WHITE 322	POWER PINK/ BLACK/ WHITE 456
---------------------------------	-------------------------------------	---------------------------------	--------------------------------	-----------------------------------	---------------------------------------



PURPLE/ GOLD/ WHITE 615	POWER YELLOW/ BLACK/ WHITE 458	RED/ BLACK/ WHITE 110	ROYAL/ RED/ WHITE 115	WHITE/ BLACK/ WHITE 132
----------------------------------	--	--------------------------------	--------------------------------	----------------------------------



LADIES SLEEVELESS ATTAIN JERSEY

**4794** Ladies S-2XL MSRP 10.20  
**4795** Girls XS-L MSRP 9.20

- 100% polyester wicking knit with color secure® technology that helps prevent dye migration
- Tear away label



NAVY 065    BLACK 080    COLUMBIA BLUE 089    SILVER 099    PURPLE 747    ELECTRIC PINK 80N



RED 040    ROYAL 060    WHITE 005    GOLD 025    ORANGE 029    DARK GREEN 035



Pinhole mesh



COORDINATING ADULT/YOUTH

1420 | 1421

LADIES INFERNO SHORTS



**1292** Ladies S-2XL MSRP 20.20  
**1293** Girls S-L MSRP 19.20

- 92% polyester/8% spandex wicking pinhole mesh
- Tag-free label
- Covered elastic waistband with inside drawcord
- 5-inch inseam
- Girls inseam graded



BLACK 080    RED 040    ROYAL 060    COLUMBIA BLUE 089



NAVY 065    GRAPHITE 059    POWER PINK 809

LADIES OCTANE SHORTS



**1423** Ladies S-2XL MSRP 8.40

- 100% polyester wicking knit
- Tag-free label
- Covered elastic waistband with inside drawcord
- 7-inch inseam



BLACK 080    DARK GREEN 035    GRAPHITE 059    MAROON 045\*    NAVY 065    RED 040    ROYAL 060    SILVER 099

\*Maroon shades can vary by brand, please contact our Customer Care with questions.



LADIES FREESTYLE  
SUBLIMATED KNICKER

**746LGX** Ladies S-3XL MSRP 85.00  
**746LGG** Girls S-XL MSRP 84.00

- 12 ounce per linear yard, 100% polyester stretch double knit
- Branded silicone knitted elastic waistband with tunnel belt loops
- Two-snap closure
- Zipper fly
- Two set-in double welt back pockets with button closure
- Reinforced knees
- Elastic cuffs



Lite Chevron



Fast Pitch





For available design lines visit [augustasportswear.com/sublimation](http://augustasportswear.com/sublimation)



P500

Windmill  
228350



### LADIES FREESTYLE SUBLIMATED KNICKER

<b>228372</b>	Ladies	XS-3XL	MSRP 77.00
<b>228472</b>	Girls	S-XL	MSRP 76.00

- 16 ounce per linear yard, 100% polyester double knit with stain release
- Silicone knitted elastic waistband with tunnel belt loops
- Two-snap closure
- Zipper fly
- Two set-in double welt back pockets with button closure
- Reinforced knees
- Elastic cuffs



Pin Stripe



Windmill





Yoga pant fit

FLEXSTRETCH



4-Way stretch properties allow for increased mobility



NEW

LADIES FLEXSTRETCH SOFTBALL PANT WITH BELT LOOPS

R16LSX Ladies XS-2XL MSRP 50.00

- 13 ounce per linear yard, 87% polyester/13% spandex wicking knit with stain release
- Yoga pant fit
- Branded silicone knitted elastic waistband with tunnel belt loops
- Two-snap closure
- Zipper fly
- Two set-in double welt back pockets with button closure
- Reinforced knees
- Elastic cuffs



BASEBALL GREY BG7

BLACK BLK

WHITE WHI



LADIES SLIDEFLEX PANT

**1297** Ladies  
XS-3XL MSRP 42.00  
**1298** Girls  
XS-L MSRP 41.00

- 16 ounce per linear yard, 100% polyester double knit
- Wicking stain release properties
- Mid rise, elastic waistband
- Tunnel belt loops
- Two-snap closure
- Zipper fly
- Two set-in double welt back pockets
- Reinforced knees
- Graded inseam
- Elastic cuffs



BLUE GREY 053    BLACK 080    GRAPHITE 059    NAVY 065    WHITE 005



**NEW**

LADIES ON DECK  
SOFTBALL KNICKER

**RS5DBX** Ladies  
XS-2XL MSRP 32.00  
**RS4DBG** Girls  
S-L MSRP 31.00

- 11 ounce per linear yard, 100% polyester stretch double knit with stain release
- Branded silicone knitted elastic waistband with tunnel belt loops
- Two-snap closure
- Zipper fly
- Two set-in double welt back pockets with button closure
- Reinforced knees
- Elastic cuffs



BASEBALL GREY BG7    BLACK BLK    NAVY NAV    WHITE WHI



**NEW**

LADIES GAMER CLASSIC PANT

**6970** Ladies  
XS-2XL MSRP 22.00  
**6971** Girls  
S-L MSRP 21.00

- 12.5 ounce per linear yard, 100% polyester double-knit
- Elastic waistband
- Tunnel belt loops
- Two-snap closure
- Zipper fly
- Right back welt pocket
- Reinforced knees
- Elastic cuffs



BLUE GREY 053    BLACK 080    NAVY 065    WHITE 005





### GAMER PULL-UP BASEBALL PANTS

**NEW**

**6848** Adult S-XL MSRP 11.80  
**6849** Youth XXS-XL MSRP 10.80

- 12.7 ounce per linear yard, 100% polyester double-knit
- Elastic waistband with inside drawcord
- Faux fly
- Right back welt pocket
- Reinforced double knees
- Retail ticketing matchbook
- Graded inseam
- Elastic cuffs



### GAMER PULL-UP BASEBALL PANTS WITH LOOPS

**NEW**

**6850** Adult S-XL MSRP 13.80  
**6851** Youth XXS-XL MSRP 12.80

- 12.7 ounce per linear yard, 100% polyester double-knit
- Elastic waistband with inside drawcord
- Tunnel belt loops
- Faux fly
- Right back welt pocket
- Reinforced double knees
- Retail ticketing matchbook
- Graded inseam
- Elastic cuffs



BLACK  
080

BLUE  
GREY  
053

WHITE  
005



BLACK  
080

BLUE  
GREY  
053

WHITE  
005



### HERITAGE JACKET

**229140** Adult S-4XL MSRP 77.80  
5XL in select colors

- Duraweav™ fabric has a smooth oxford nylon surface
- 100% polyester quilted lining
- 15mm matte painted enamel snap front
- Set-in sleeves
- Front pockets
- Inside valuables pocket
- Rib-trim collar, cuffs, and bottom hem

Available in 4XL-5XL



BLACK/WHITE 420    NAVY/WHITE 301    ROYAL/WHITE 280    SCARLET/WHITE 408    BLACK 080    NAVY 065



BLACK/LT GOLD/WHITE R21    BLACK/SCARLET/WHITE R20    DARK GREEN/LT GOLD/WHITE S06    MAROON/WHITE 380    BLACK/ORANGE/WHITE 611    NAVY/LT GOLD/WHITE S30



Snap Front



### SATIN BASEBALL JACKET/STRIPED TRIM

**3610** Adult XS-3XL MSRP 54.20

- Outer shell of 100% nylon satin
- Lined with 100% polyester brushed tricot
- Raglan sleeves
- Front pockets
- Rib-knit collar, cuffs and bottom



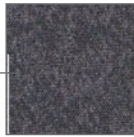
COLUMBIA BLUE/WHITE 293    LIGHT PINK/WHITE 465    METALLIC GOLD/WHITE 259    METALLIC SILVER/WHITE 260



BLACK/WHITE 420    RED/WHITE 400    ROYAL/WHITE 280    NAVY/WHITE 301







Tech Print Pattern

Sleeve pocket with silver media port & silicone welded zipper

Divided Front Pouch Pocket

Spandex-Bound Cuffs



RAIDER PULLOVER

**229155** Adult XS-3XL MSRP 66.00  
4XL in select colors

- Ultra-lightweight Aero-Tec™ fabric provides both weather protection and zero noise, without the bulk
- Set-in sleeves



CARBON PRINT/ FOREST H69

CARBON PRINT/ MAROON H06

CARBON PRINT/ ORANGE H07

CARBON PRINT/ PURPLE H68

CARBON PRINT/ WHITE H04

Available in Adult 4XL



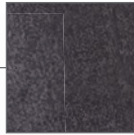
CARBON PRINT/ BLACK H05

CARBON PRINT/ GRAPHITE H60

CARBON PRINT/ NAVY H03

CARBON PRINT/ ROYAL H02

CARBON PRINT/ SCARLET H01



Tech Print Pattern

Sleeve pocket with silver media port & silicone welded zipper

Divided Front Pouch Pocket



RAIDER PULLOVER SHORT SLEEVE

**229545** Adult S-3XL MSRP 60.60  
4XL in select colors

- Ultra-lightweight Aero-Tec™ fabric provides both weather protection and zero noise, without the bulk
- Set-in sleeves

Available in Adult 4XL



CARBON PRINT/ BLACK H05

CARBON PRINT/ NAVY H03

CARBON PRINT/ ROYAL H02

CARBON PRINT/ SCARLET H01

CARBON PRINT/ WHITE H04



CARBON PRINT/ FOREST H69

CARBON PRINT/ GRAPHITE H60

CARBON PRINT/ MAROON H06

CARBON PRINT/ ORANGE H07

CARBON PRINT/ PURPLE H68



### SHORT SLEEVE PULLOVER

**872RVM** Adult S-3XL MSRP 52.20  
**872RVB** Youth S-XL MSRP 51.20

- 100% polyester lightweight breathability fabric
- Dri-Power® Moisture Wicking Technology
- Raglan sleeves
- Adjustable bottom hem with hidden shockcord closure (on Adult only)

Colors Available in Youth



Embossed pattern



### BIONIC WINDSHIRT

**229019** Adult S-3XL MSRP 60.20

- Micron™ polyester is a lightweight, wind/water resistant fabric
- Sleeves and arms are embossed with the Screenmesh print
- Jersey and taffeta lining for added warmth
- Raglan sleeves
- Front pockets
- Elastic cuffs
- Open bottom with adjustable elastic hidden drawcord







Jacket folds up into zippered front pocket



### RANGE PACKABLE PULLOVER

**229554** Adult S-3XL MSRP 48.00  
4XL in select colors

**229654** Youth S-XL MSRP 47.00  
Select Colors

- Tech weave printed Micron™ lightweight polyester, wind/water resistant fabric
- Adjustable 3 piece hood with eyelets and concealed cord locks on Adult only (elastic on youth)
- Raglan sleeves
- Half-elastic cuffs
- Adjustable bottom hem with hidden shockcord closure on right side of pocket (on Adult only)



### MICRO POLY WINDSHIRT/LINED

**3415** Adult S-4XL MSRP 29.40

- Outer shell of 100% micro polyester
- Lined with 100% polyester taffeta
- Rib-knit V-neck collar, cuffs and bottom band
- Set-in sleeves
- Side seam pockets





Embossed Pattern

Ladies Fit

Side seam zipper for easy on/off



SERIESX PULLOVER

<b>229533</b>	Adult	XS-3XL	MSRP 59.60
		4XL in select colors	
<b>229633</b>	Youth	S-XL	MSRP 58.60
<b>229733</b>	Ladies	XS-2XL	MSRP 59.60

- Micron™ polyester is a lightweight, wind/water-resistant fabric
- Micromesh lined nylon body
- Taffeta lined sleeves
- Set-in sleeves
- Front pockets
- Spandex bound cuffs
- Dropped tail with side vents
- Alternate pant: 229531 | 229631 | 229731, 229095

Available in 4XL, Ladies & Youth

Available in Adult & Ladies



BLACK 080

CARBON 096

WHITE 005

NAVY 065

ROYAL 060

SCARLET 083

BLACK/ ORANGE 423

BLACK/ SCARLET 500



CARDINAL 036

CARBON/ GOLD 43M

COLUMBIA BLUE 089

DARK GREEN 035

KELLY 030

MAROON 045

NAVY/ GOLD 302

NAVY/ SCARLET S20

PURPLE 050





Back



Side zipper



### CLUBHOUSE PULLOVER

**229595** Adult S-3XL MSRP 48.80  
**229695** Youth S-XL MSRP 47.80

- Areo-Tec 100% polyester
- Low profile collar
- Set-in sleeves
- Side seam pockets
- Spandex bound cuffs
- Side zipper for easy on/off



BLACK/  
BLACK  
425

BLACK/  
ORANGE  
423

BLACK/  
WHITE  
420

DARK GREEN/  
WHITE  
438

GRAPHITE/  
WHITE  
R04

NAVY/  
NAVY  
S14

NAVY/  
SCARLET  
S20

NAVY/  
WHITE  
301

ROYAL/  
WHITE  
280

SCARLET/  
WHITE  
408

WHITE/  
GRAPHITE  
751



Side seam zipper for easy on/off



Stretch mesh at center back for maximum mobility



### CLUBHOUSE SHORT SLEEVE PULLOVER

**229581** Adult  
S-4XL MSRP 44.80

5XL in select colors

**229681** Youth  
S-XL MSRP 43.80

- Areo-Tec 100% polyester
- Low profile collar
- Set-in sleeves
- Side seam pockets

Available in 5XL



BLACK/  
WHITE  
420

GRAPHITE/  
WHITE  
R04

NAVY/  
WHITE  
301

WHITE/  
GRAPHITE  
751



ROYAL/  
WHITE  
280

SCARLET/  
WHITE  
408

DARK  
GREEN/  
WHITE  
438



MAROON/  
WHITE  
380

BLACK/  
ORANGE  
423

NAVY/  
SCARLET  
S20







**NEW**

### CROSTOWN JACKET

<b>223530</b>	Adult	S-3XL	MSRP 42.00
<b>223630</b>	Youth	S-XL	MSRP 41.00
<b>223730</b>	Ladies	S-2XL	MSRP 42.00

- Dry-Excel™ 100% polyester double-knit
- Dry-Excel™ 100% polyester mesh inserts
- Ladies' fit on style 223730
- Woven label
- Front zipper
- Set-in sleeves
- Front zippered pockets
- Open bottom



BLACK/ BLACK 425	BLACK/ WHITE 420	GRAPHITE/ WHITE R04	NAVY/ WHITE 301	ROYAL/ WHITE 280	SCARLET/ WHITE 408	WHITE/ BLACK 226
------------------------	------------------------	---------------------------	-----------------------	------------------------	--------------------------	------------------------



### PACKABLE FULL ZIP JACKET

<b>229582</b>	Adult	S-4XL	MSRP 49.00
<b>229782</b>	Ladies	XS-3XL	MSRP 49.00

- Micron™ polyester is a lightweight, wind/water-resistant fabric
- Ladies' fit on style 229782
- Adjustable hood with inside concealed cord locks
- Reflective trim
- Back vent with adjustable closure for full decoration access
- Set-in sleeves
- Front zippered pockets
- Spandex bound cuffs
- Open bottom
- Adjustable elastic hidden drawcord at bottom hem (Adult only)



Zippered pocket on wearer's left sleeve



Hidden drawcord at waist on Ladies



ATHLETIC GREY 009	BLACK 080	CARBON J96	DARK GREEN 035	MAROON 745	NAVY 065	PURPLE 747
-------------------------	--------------	---------------	----------------------	---------------	-------------	---------------

[Available in Adult only]



ROYAL 060	SCARLET 083	OLIVE 039
--------------	----------------	--------------



Jacket folds into zippered pocket



### POTOMAC JACKET



229527 Adult S-3XL MSRP 82.40

- Micro-Cord™ woven polyester fabric with a raised, ribbed texture
- Micromesh lined body and sleeves
- Concealed adjustable hood with eyelets and concealed cord locks stows when not in use
- Back vent with adjustable closure for full decoration access
- Front zippered pockets
- Dual inside pockets
- Rib-knit collar and cuffs
- Open bottom with adjustable elastic hidden drawcord (on Adult)
- Dropped tail



BLACK 080 CARBON 096 NAVY 065 BLACK/GOLD 421 BLACK/ORANGE 423 BLACK/SCARLET 500 BLACK/WHITE 420 CARBON/WHITE F52



DARK GREEN/WHITE 438 MAROON/WHITE 380 NAVY/GOLD 302 NAVY/SCARLET 520 NAVY/WHITE 301 ROYAL/WHITE 280 SCARLET/WHITE 408



Back



### 60/40 FLEECE HOODIE

5414 Adult S-5XL MSRP 32.80

5415 Youth S-L MSRP 31.80

- 9 ounce 60% cotton/40% polyester athletic fleece
- Tear away label
- Jersey lined hood with flat braid drawcord (on Adult only)
- Set-in sleeves
- Front pouch pocket
- Rib-knit cuffs and bottom band

CORE color choice



CARBON HEATHER E83 BLACK 080 CARDINAL J36 CHARCOAL HEATHER 017 COLUMBIA BLUE 089 DARK GREEN 035 GOLD 025



GRAPHITE 059 KELLY 030 LIME 096 MAROON 045 NAVY 065 ORANGE 029 POWER BLUE 812



POWER PINK 809 POWER YELLOW 810 PURPLE 050 RED 040 ROYAL 060 VEGAS GOLD 023 WHITE 005

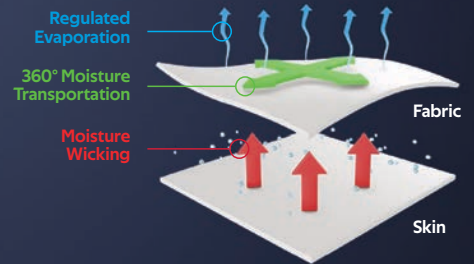




Coolcore® is engineered to distribute moisture quickly throughout the garment.

As the moisture spreads it dries faster to keep you cool and comfortable.

### Patented Fabric Technology



Back

### PERFORATED COOLCORE® VISOR

**P500** Adult One Size MSRP 17.00

- 96% polyester/4% spandex tech twill
- Mesh sweatband with Coolcore® technology
- 2-inch crown
- Curved visor
- Contrast color undervisor
- Hook-and-loop adjustable
- Perforated side panels with contrast color underlay





Back

**LITE SERIES ALL-SPORT ACTIVE VISOR**

**510V** Adult One Size MSRP 15.40

- 100% polyester lightweight "Ghost" performance fabric
- 2-inch crown
- Curved visor
- Gray undervisor
- Hook-and-loop adjustable



BLACK 080    BLACK/ GRAPHITE R17    BLACK/ WHITE 420    BLACK/ ROYAL 426    BLACK/ ORANGE 423    BLACK/ RED 424    WHITE 005    WHITE/ DK GREEN 232    WHITE/ MAROON 224    WHITE/ GRAPHITE 751    WHITE/ BLACK 226    WHITE/ NAVY 221    WHITE/ RED 225    WHITE/ ROYAL 220



Back



**M2 PERFORMANCE HOOK-AND-LOOP VISOR**

**598V** Adult One Size MSRP 15.20

- M2 Performance
- Stain-resistant
- 2-inch crown
- Curved visor
- Self-material undervisor
- Pro-stitched finish
- Hook-and-loop adjustable



BLACK 080    NAVY 065    DK GREEN 035    ROYAL 060    RED 040    WHITE 005    SILVER 099





### ADJUSTABLE WICKING MESH TWO-COLOR VISOR

**6260** Adult One Size MSRP 11.00

- 100% polyester
- Curved visor
- Hook-and-loop adjustable



BLACK/  
WHITE  
420

RED/  
WHITE  
400

ROYAL/  
WHITE  
280

NAVY/  
WHITE  
301



### ATHLETIC MESH VISOR

**6227** Adult One Size MSRP 8.40

**6228** Youth One Size MSRP 8.40

- 100% polyester athletic mesh with tricot backing
- Curved visor
- Sweatband folds down for easy embellishment
- Hook-and-loop adjustable

Available in Adult & Youth

Available in Adult only



BLACK  
080

WHITE  
005

RED  
040

ROYAL  
060

COLUMBIA  
BLUE  
089

NAVY  
065

SILVER  
GREY  
016

POWER  
PINK  
809

MAROON  
045

GOLD  
025

PURPLE  
050

KELLY  
030

DARK  
GREEN  
035

LIME  
096



**ATHLETIC MESH  
TWO-COLOR VISOR**

**6223**    Adult    One Size    MSRP 8.40

- 100% polyester athletic mesh with tricot backing
- Curved visor
- Sweatband folds down for easy embellishment
- Hook-and-loop adjustable



BLACK/  
WHITE  
420

RED/  
WHITE  
400

ROYAL/  
WHITE  
280

NAVY/  
WHITE  
301

NAVY/  
RED  
307



**SPORT TWILL VISOR**

**6225**    Adult    One Size    MSRP 8.00

**6226**    Youth    One Size    MSRP 8.00

- 100% cotton twill
- Curved visor
- Sweatband folds down for easy embellishment
- Hook-and-loop adjustable





Mini Chevron



Water Color  
Camo



**FREESTYLE SUBLIMATED  
HEADBAND WITH TIE**

**228015** One Size MSRP 16.40

- Dry-Excel™ 84% polyester/16% spandex single-ply knit
- Adjustable lightweight head tie for a personalized fit
- 4" front, 1.5" back
- Sold in minimum packs of 12 pc per color



Marble



**FREESTYLE SUBLIMATED HEADBAND**

**228016** One Size MSRP 18.40

- Dry-Excel™ 84% polyester/16% spandex single-ply knit
- 4" front, 1.5" back
- Sold in minimum packs of 12 pc per color

Spike





### ZOOM TIE BACK HEADBAND

**223846** 2" x 34" MSRP 14.20

- Dry-Excel™ 86% polyester/14% spandex knit
- Adjustable lightweight head tie for a personalized fit



### CHEER HAIR BOW

**6701** One Size MSRP 11.40

- Solid grosgrain bow
- Decoratable grosgrain ribbon
- 3" x 7.5" with 5.5" tail
- 1" elastic hairband







**NEW**

**DIAMOND GEAR BACKPACK**

**R01DWM** 13"W x 21"H x 7"D MSRP 58.00

- 600-denier polyester with PVC coating
- Matte PVC bottom for durability
- Zippered top pocket lined with brushed interior for valuables/ small devices
- Two front webbing loops for additional clips, securing safety gear
- Full length side bat sleeves (size to fit up to 2 5/8" bat)
- Inside zippered mesh pocket
- Collapsible shelf for glove
- Padded back for support and comfort
- Adjustable padded shoulder straps with adjustable sternum strap



BLACK  
BLK



NAVY  
NAV



ROYAL  
ROY



STEALTH  
SHL



TRUE RED  
TRR





# THE ULTIMATE SOFTBALL GEAR BAG



Web handle at top of backpack with fence clip with hidden pocket to store away when not in use



Top zippered opening with collapsible shelf for glove



Front zippered pocket for batting gloves etc.



Hook and loop strip closure for batting gloves



Large dual entry main interior compartment with two zipper pulls



Two mesh side water bottle pockets

Front helmet flap with adjustable straps





NEW

### CORE MULTI-SPORT SOCKS

**6922** Large (10-13)  
Medium (9-11)  
Small (7-9)  
X-Small (5-7)  
MSRP 4.40

- 95% polyester/5% rubber
- Knee-length tube sock



### ELITE MULTI-SPORT SOCK

**6006** Large (10-13)  
Medium (9-11)  
Small (7-9)  
MSRP 10.20

- 75% acrylic/15% polyester/4% spandex/4% elastic/2% nylon
- Knee length
- Lightweight microfiber yarns offer support while remaining soft to the touch



### WICKING ATHLETIC SOCK

**6085** Large (10-13)  
Medium (9-11)  
Small (7-9)  
MSRP 10.40

- 70% lucool wicking polyester/13% nylon/12% elastic/5% spandex
- Knee-length tube sock

### GAME SOCK

**6020** Large (10-13)  
Medium (9-11)  
Small (7-9)  
MSRP 7.00

- 91% nylon/5% polyester/4% elastic
- Tube sock, slightly below the knee

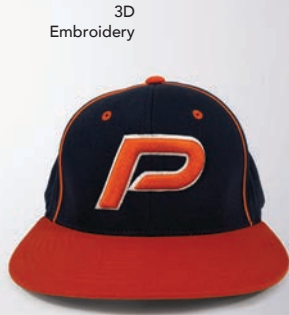


BLACK 080





Screen Print



3D Embroidery



Applique



Embroidery



Tonal Etch

flexstyle



Heat Transfer



Sublimated Patch



Flat Embroidery



Heat Transfer



Genuine Leather Patch



Embroidery

# WE HAVE THE TECHNIQUES FOR YOUR CUSTOMIZATION & DECORATION

For our full list of decoration techniques, pricing & access to our complete library of stock templates for both apparel & headwear, visit [augustasportswear.com/decoration](http://augustasportswear.com/decoration)



Screen Print



Faux Leather Patch



ASB



[www.augustasportswear.com](http://www.augustasportswear.com)