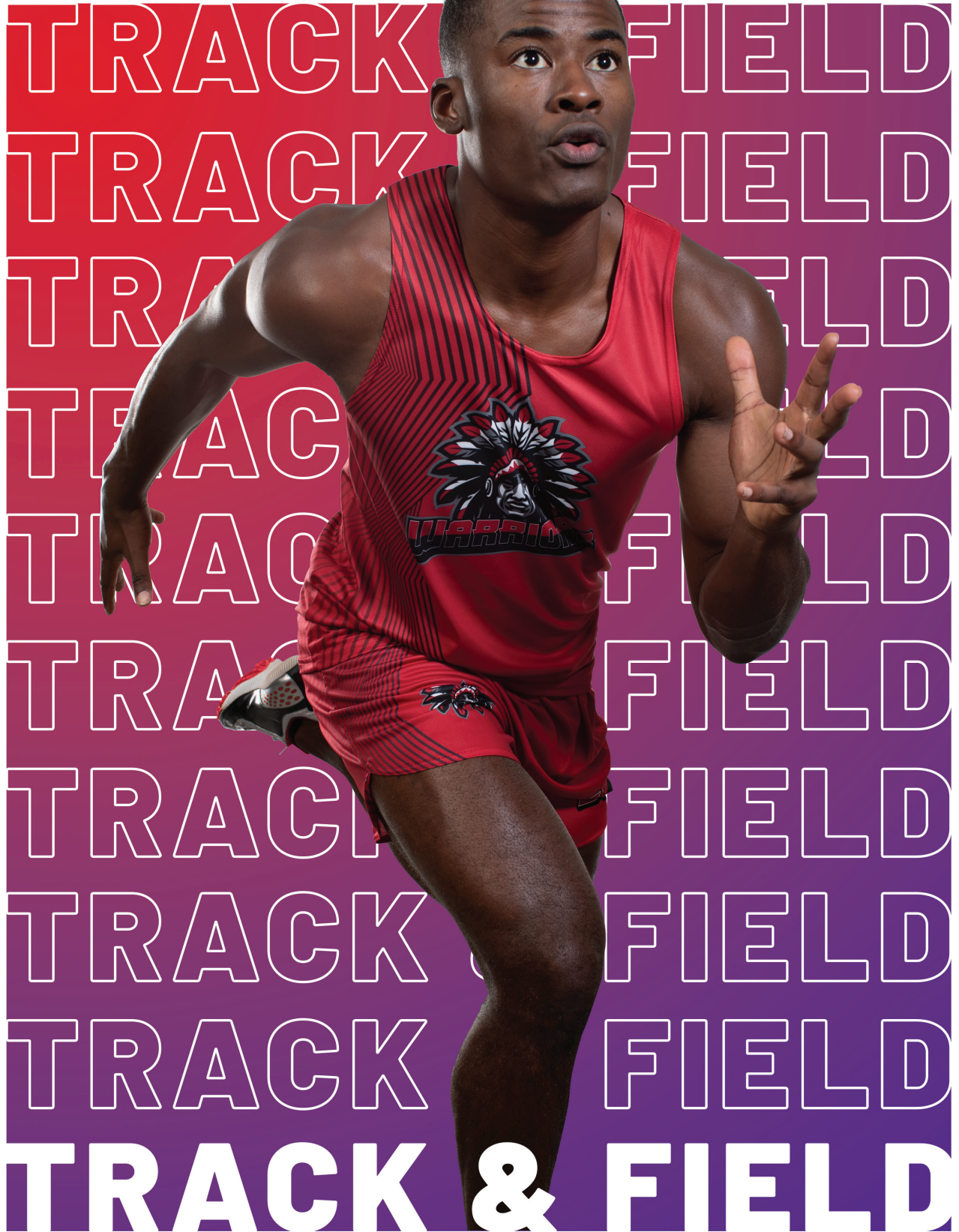


ASB | 2023 - 2024

AUGUSTASPORTSWEAR.COM





**FREESTYLE SUBLIMATED
FITTED TRACK JERSEY**

228192 Adult
XS-3XL MSRP 46.20

- Dry-Excel™ 84% polyester/16% spandex knit
- Garment protects against the sun with 50+ UPF
- Flatlock stitching provides comfort and helps prevent chafing



**FREESTYLE SUBLIMATED
FITTED TRACK SHORTS**

228193 Adult
XS-3XL MSRP 50.40

- Dry-Excel™ 86% polyester/14% spandex knit
- Garment protects against the sun with 50+ UPF
- Covered elastic waistband with quickcord
- Flatlock stitching provides comfort and helps prevent chafing
- 9-inch inseam



Diagonal Color Block



Racer



Staggered Stripe



**LADIES FREESTYLE SUBLIMATED
FITTED TRACK JERSEY**

228392 Ladies
XS-2XL MSRP 46.20

- Dry-Excel™ 84% polyester/16% spandex knit
- Garment protects against the sun with 50+ UPF
- Flatlock stitching provides comfort and helps prevent chafing



**LADIES FREESTYLE SUBLIMATED
FITTED TRACK SHORTS**

228393 Ladies
XS-2XL MSRP 50.40

- Dry-Excel™ 86% polyester/14% spandex knit
- Covered elastic waistband with quickcord
- Flatlock stitching provides comfort and helps prevent chafing
- 4-inch inseam



Fleet



Diagonal Color Block



Staggered Stripe



For available design lines visit
augustasportswear.com/sublimation



**FREESTYLE SUBLIMATED
 TRADITIONAL TRACK JERSEY**

228190 Adult
 XS-3XL MSRP 40.20
228290 Youth
 S-L MSRP 39.20

- Dry-Excel™ 100% polyester smooth wicking knit body
- 100% polyester wicking pinhole mesh back
- Garment protects against the sun with 15+ UPF



Racer



Staggered Stripe

Break Line



**FREESTYLE SUBLIMATED
 TRADITIONAL TRACK SHORTS**

228191 Adult
 XS-3XL MSRP 50.40
228291 Youth
 S-L MSRP 49.40

- Dry-Excel™ 100% polyester smooth wicking knit body
- Dry-Excel™ polyester brief liner
- Garment protects against the sun with 15+ UPF
- Covered elastic waistband with quickcord
- 5-inch inseam
- Youth inseam graded



**LADIES FREESTYLE SUBLIMATED
 TRADITIONAL TRACK JERSEY**

228390 Ladies
 XS-2XL MSRP 40.20

- Dry-Excel™ 100% polyester smooth wicking knit body
- 100% polyester wicking pinhole mesh back
- Garment protects against the sun with 15+ UPF



Diagonal Color Block



Staggered Stripe

Break Line



**LADIES FREESTYLE SUBLIMATED
 TRADITIONAL TRACK SHORTS**

228391 Ladies
 XS-2XL MSRP 50.40

- Dry-Excel™ 100% polyester smooth wicking knit body
- Dry-Excel™ polyester brief liner
- Garment protects against the sun with 15+ UPF
- Covered elastic waistband with quickcord
- 2 3/4-inch inseam



Racerback on Ladies



PR MAX COMPRESSION JERSEY

221037 Adult XS-2XL MSRP 38.60
221337 Ladies XS-2XL MSRP 38.60

- 84% polyester/16% spandex knit with color secure® technology that helps prevent dye migration
- 90% polyester/10% spandex wicking mesh side and back and side inserts with color secure® technology
- Ladies' fit on style 221337
- Tag-free label



BLACK/WHITE 420
 NAVY/WHITE 301
 PURPLE/WHITE 450
 ROYAL/WHITE 280
 SCARLET/WHITE 408
 WHITE/WHITE 230



PR MAX COMPRESSION SHORTS

221038 Adult XS-2XL MSRP 32.40
221338 Ladies XS-2XL MSRP 32.40

- Heavyweight 88% polyester/12% spandex knit with color secure® technology that helps prevent dye migration
- Ladies' fit on style 221338
- Tag-free label
- Covered elastic waistband (inside drawcord on Adult)
- Flatlock stitching provides comfort and helps prevent chafing
- 10-inch inseam (4-inch on Ladies)



BLACK 080
 NAVY 065
 PURPLE 050
 ROYAL 060
 SCARLET 083





2436



Racerback



LADIES CROSSOVER TANK

2436 Ladies S-2XL MSRP 27.20
2437 Girls S-L MSRP 26.20

- 84% polyester/16% spandex knit with color secure® technology that helps prevent dye migration
- 90% polyester/10% spandex wicking mesh inserts and yoke with color secure® technology
- Tag-free label



BLACK/
WHITE
420

DARK GREEN/
WHITE
438

GRAPHITE/
WHITE
R04

MAROON/
WHITE
380



NAVY/
WHITE
301

ROYAL/
WHITE
280

RED/
WHITE
400

WHITE/
WHITE
230

1232



LADIES DARE SHORTS

1232 Ladies S-2XL MSRP 21.80
1233 Girls S-L MSRP 20.80

- Heavyweight 88% polyester/12% spandex knit
- Tag-free label
- Low rise, wide flat waistband for secure fit and comfort
- No front seam
- U-shaped gusset
- Flatlock stitching provides comfort and helps prevent chafing
- 2 ½-inch inseam
- Girls inseam graded



BLACK
080

DARK GREEN
035

MAROON
045

NAVY
065

PURPLE
050

RED
040

ROYAL
060



Back
Insert
Mesh



PR MAX JERSEY

221035 Adult S-2XL MSRP 32.40
221335 Ladies XS-2XL MSRP 32.40

- Dry-Excel™ 100% polyester wicking smooth knit with color secure® technology that helps prevent dye migration
- Dry-Excel™ Micro-Interlock smooth 100% polyester mesh side and back
- Ladies' fit on style 221335
- Heat sealed label



BLACK/WHITE 420
 NAVY/WHITE 301
 PURPLE/WHITE 450
 ROYAL/WHITE 280
 SCARLET/WHITE 408
 WHITE/WHITE 230



221335



Modified Racerback
on Ladies



PR MAX SHORTS

221036 Adult S-2XL MSRP 32.40
221336 Ladies XS-2XL MSRP 32.40

- Dry-Excel™ 100% polyester wicking smooth knit with color secure® technology that helps prevent dye migration
- Coolmax™ polyester brief liner
- Ladies' fit on style 221336
- Tag-free label
- Covered elastic waistband with inside drawcord
- Matching inner brief with leg elastic
- Split side vent
- 3.5-inch inseam on Adult
- Youth inseam graded



BLACK 080
 NAVY 065
 PURPLE 050
 ROYAL 060
 SCARLET 083
 WHITE 005

221336

2.75-inch
Inseam



Ladies Fit

4-inch (Youth Inseam Graded)



ACCELERATE JERSEY

352 Adult S-2XL MSRP 20.20

353 Youth S-L MSRP 19.20

354 Ladies XS-2XL MSRP 20.20

- 100% polyester wicking knit
- Tag-free label



BLACK/ WHITE 420	DARK GREEN/ WHITE 438	NAVY/ WHITE 301	RED/ WHITE 400	ROYAL/ WHITE 280	GOLD/ WHITE 245
------------------------	--------------------------------	-----------------------	----------------------	------------------------	-----------------------



NAVY/ GRAPHITE 321	MAROON/ WHITE 380	MAROON/ GRAPHITE D45	ORANGE/ WHITE 320	RED/ GRAPHITE 825
--------------------------	-------------------------	----------------------------	-------------------------	-------------------------



ACCELERATE SHORTS

355 Adult S-2XL MSRP 22.80

356 Youth S-L MSRP 21.80

357 Ladies XS-2XL MSRP 22.80

- 100% polyester wicking knit
- Tag-free label
- Covered elastic waistband with inside drawcord
- Matching inner brief with leg elastic
- Side vents

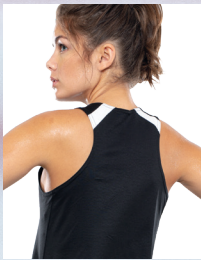


BLACK 080	KELLY 030	NAVY 065	ROYAL 060	RED 040
--------------	--------------	-------------	--------------	------------

Available in Ladies only	Available in Adult & Ladies only	Available in Adult & Youth only
-----------------------------	-------------------------------------	------------------------------------



GOLD 025	MAROON 045	ORANGE 029
-------------	---------------	---------------



Modified Racerback
on Ladies

343

355

357

348



OVERSPEED JERSEY

343	Adult	S-3XL	MSRP 19.40
344	Youth	S-XL	MSRP 18.40
348	Ladies	XS-2XL	MSRP 19.40

- 100% polyester wicking knit with color secure® technology that helps prevent dye migration
- Ladies' fit on style 348
- Tag-free label

Available in
[Adult & Youth]
only



BLACK/
WHITE
420

DARK GREEN/
WHITE
438

NAVY/
WHITE
301

ROYAL/
WHITE
280

SCARLET/
WHITE
408

WHITE/
BLACK
226



CROSSTOWN JACKET

NEW

223530	Adult	S-3XL	MSRP 42.00
223630	Youth	S-XL	MSRP 41.00
223730	Ladies	S-2XL	MSRP 42.00

- Dry-Excel™ 100% polyester double-knit
- Dry-Excel™ 100% polyester mesh inserts
- Ladies' fit on style 223730
- Woven label
- Front zipper
- Set-in sleeves
- Front zippered pockets
- Open bottom
- Dropped tail hem



BLACK/BLACK 425 BLACK/WHITE 420 GRAPHITE/WHITE R04 NAVY/WHITE 301



ROYAL/WHITE 280 SCARLET/WHITE 408 WHITE/BLACK 226



CROSSTOWN PANT

NEW

223531	Adult	S-3XL	MSRP 40.00
223631	Youth	S-XL	MSRP 39.00
223731	Ladies	S-2XL	MSRP 40.00

- Dry-Excel™ 100% polyester double-knit
- Dry-Excel 100% polyester mesh inserts
- Ladies' fit on style 222731
- Woven label
- Covered elastic waistband with inside drawcord
- Side seam pockets
- Tapered leg
- Zipper on outside lower leg



BLACK/BLACK 425 BLACK/WHITE 420 GRAPHITE/WHITE R04 NAVY/WHITE 301 ROYAL/WHITE 280 SCARLET/WHITE 408 WHITE/BLACK 226



223730

223731



223530

223531



Web handle at top of backpack

Convertible, mesh pouch stashes away when not in use. Fits volleyball, soccer or basketball



Reinforced, multi-use side pouch pockets with bat straps

Two mesh side pockets for water bottle with pass-thru for lacrosse stick or bat



ALL SPORT BACKPACK

327890 12"W x 18.5"H x 7"D MSRP 42.40

- 100% polyester heavy denier
- Large main interior compartment
- Front zipper pocket with deep, interior pouch holds shoes or accessories



Without mesh ball holder



BLACK/ GRAPHITE/ BLACK 052
 GRAPHITE/ GRAPHITE/ BLACK 083
 FOREST/ GRAPHITE/ BLACK 088
 MAROON/ GRAPHITE/ BLACK 089
 NAVY/ GRAPHITE/ BLACK 093
 ORANGE/ GRAPHITE/ BLACK 090
 PURPLE/ GRAPHITE/ BLACK 091
 ROYAL/ GRAPHITE/ BLACK 084
 SCARLET/ GRAPHITE/ BLACK 086



Two mesh side pockets



RIPSTOP BACKPACK

1710 12.5"W x 18.25"H x 6"D MSRP 41.60

- 600-denier polyester with PVC coating
- 600-denier polyester ripstop front panels with double PU coating
- Zippered main compartment with covered zipper pulls
- Zippered front pocket with inside pen holders
- Interior cell phone holder and zippered pocket
- Handle at top of backpack
- Padded back for support and comfort
- Adjustable padded shoulder straps



BLACK/ BLACK 425
 RED/ BLACK 407
 ROYAL/ BLACK 289
 NAVY/ BLACK 308
 GOLD/ BLACK 244
 PURPLE/ BLACK 496
 DARK GREEN/ BLACK 444
 GRAPHITE/ BLACK 172



TRI-COLOR DRAWSTRING BACKPACK

1920 14"W x 18"H MSRP 11.60

- 210-denier nylon with PU coating
- Hemmed top with drawcord closure
- Zippered front pocket
- Web tab at bottom corner for reinforcement



BLACK/ BLACK/ WHITE 529
 RED/ BLACK/ WHITE 110
 ROYAL/ BLACK/ WHITE 526
 COLUMBIA BLUE/ BLACK/ WHITE 519
 NAVY/ BLACK/ WHITE 311
 GOLD/ BLACK/ WHITE 249
 PURPLE/ BLACK/ WHITE 497
 KELLY/ BLACK/ WHITE 616

Mini Chevron



Water Color
Camo



**FREESTYLE SUBLIMATED
HEADBAND WITH TIE**

228015 One Size MSRP 16.40

- Dry-Excel™ 84% polyester/16% spandex single-ply knit
- Adjustable lightweight head tie for a personalized fit
- 4" front, 1.5" back
- Sold in minimum packs of 12 pc per color

Spike



Marble



FREESTYLE SUBLIMATED HEADBAND

228016 One Size MSRP 18.40

- Dry-Excel™ 84% polyester/16% spandex single-ply knit
- 4" front, 1.5" back
- Sold in minimum packs of 12 pc per color