



CAPAMERICA®



2023

KNIT CATALOG



ASI/43792
PPAI/111597
SAGE 50597
DC#101506
CAPAMRCA





VISIT US AT WWW.CAPAMERICA.COM
STAY CONNECTED | FOLLOW US ON SOCIAL MEDIA

LOOK FOR CAPAMERICA85 ON:



USEFUL ICONS

Let these icons be your guide to understanding new & useful information about our products:



▶ PRICE INCLUDES 10,000 STITCHES (FLAT STITCHES, FRONT LOCATION ONLY)



▶ FREE DIGITIZING ON ALL LOCATIONS



▶ MADE IN USA KNIT STYLES

COMMITMENT TO OUR CLIENTS

2022 was a pivotal year of progress at Cap America. Sometimes I feel like a broken record, but I cannot express this enough: the growth and success we have witnessed is a direct result of our commitment to our clients. We have spent the past several months preparing to serve you, our distributors, for the future.

We are continuously striving to do better, challenging our processes and improving upon efficiencies. We're doubling down on our investments – from increasing our production capacity, to enhancing our technological capabilities, to advancing our sustainability efforts – and positioning ourselves for longstanding success in order to be the ultimate supplier partner.

Without your ongoing support, we would not be the Cap America that you know and love today. So for that, I thank you. I am excited to finish this year out strong and cannot wait to see what these next few months hold for all of us.



All the best,

Mark Gammon
CEO



WHAT WE CAN OFFER YOU

Decorated Headwear - Quick!

- ▶ Quick turn times & low minimums for embroidered in stock pieces (15 piece minimum for Premium Line, 24 piece minimum for all other in stock headwear)

All-Inclusive Pricing

- ▶ Pricing includes 10,000 stitches on the front with no setup charges

In-House Art Department

- ▶ 26 graphic designers & several digitizers allow us to offer **FREE virtual concepts** in 48 hours & **FREE digitizing**

Production Capacity

- ▶ Over 550 embroidery heads running 24 hours a day, 6 days a week with over 100 million stitches produced each day

Custom USA Made Knits

- ▶ Largest circular knit operation in North America
- ▶ Fast turn-times with a low minimum quantity of only 24 pieces

Trendy Domestic Decoration Options

- ▶ Flat Embroidery
 - ▶ FlexStyle® Appliqués
 - ▶ Genuine & Faux Leather Patches
 - ▶ Embroidered Patches
 - ▶ Woven Patches
 - ▶ Sublimated Patches
 - ▶ Molded Rubber Patches
- *all patch & appliqués are sewn to attach on knits

Private Labels - Two Options

- ▶ Domestically produced private printed labels with up to 2 colors
- ▶ Custom woven labels ordered in bulk & sewn in domestically

CATALOG DIRECTORY

NEW KNIT STYLES & COLORS2

TOP PERFORMERS 3

PREMIUM LINE KNITS 4-5

iK8554 4

iK8550 5

iK8552 5

IMPORT IN STOCK KNITS6-13

iK23 6

iK55 6

iK22 8

iK56 9

iK65 9

iK37 10

iK57 10

iK70 11

iK75 11

iK58 13

iK59 13

iK40 13

iK95 13

USA MADE IN STOCK KNITS..... 14-29

RKT12 14

RKL12 14

RKS9 17

RKS12 17

RKP12 18

RKD12 18

RKF12 21

RKF60 21

RKB12 22

RKV9 22

RKV12 22

RKH12 23

RK60 23

RKFLAG12 25

RKUSA12 25

RKSTAR12 25

RKTC9 26

RKTC12 26

RKUC9 27

RKUC12 27

RKWC9 27

RKWC12 27

TKN24 28

TKN28 28

SKN24 29

SKN28 29

USA MADE CUSTOM ELITE KNITS31-32

EK9 31

EK12 31

EK60 32

ELITE KNIT TEMPLATE DESIGNS 33

TEAM KNIT-IN MASCOTS 34

AVAILABLE YARN COLOR OPTIONS 35

DOMESTIC PATCHES & APPLIQUÉ OPTIONS.....36-39

LASER-ETCHED LEATHER PATCHES 36

DEBOSSSED LEATHER PATCHES 36

EMBROIDERED PATCHES 37

WOVEN PATCHES 38

MOLDED RUBBER PATCHES 38

FLEXSTYLE® APPLIQUÉS 39

SUBLIMATED PATCHES 39

CUSTOM OVERSEAS 40-45

CUSTOM 30 KNITS 40-41

CUSTOM 65 KNITS 42-45

INDEX BY STYLE 47

GENERAL INFORMATION 48-49

NEW STYLES & COLORS

► All new styles & colors that are sure to impress!

iK8554

PREMIUM IMPORT IN STOCK KNIT

NEW STYLE

PAGE 4



iK23

IMPORT IN STOCK KNIT

NEW STYLE

PAGE 6



iK22

IMPORT IN STOCK KNIT

NEW STYLE

PAGE 8



iK37

IMPORT IN STOCK KNIT

RECYCLED CONTENT

NEW COLOR

PAGE 10



RKT12

USA MADE IN STOCK KNIT

NEW STYLE

PAGE 14



TKN24

USA MADE IN STOCK KNIT

NEW COLORS

PAGE 28



TKN28

USA MADE IN STOCK KNIT

NEW COLORS

PAGE 28



NEW STYLES & COLORS

TOP PERFORMERS

► Our best selling knits that have wide appeal.

iK8550

PREMIUM IMPORT IN STOCK KNIT
PAGE 5



iK55

IMPORT IN STOCK KNIT
PAGE 6



iK65

IMPORT IN STOCK KNIT
PAGE 9



RKS12

USA MADE IN STOCK KNIT
PAGE 17



RKF12

USA MADE IN STOCK KNIT
PAGE 21



TKN24

USA MADE IN STOCK KNIT
PAGE 28



TKN28

USA MADE IN STOCK KNIT
PAGE 28



EK12

USA MADE CUSTOM KNIT
PAGE 31



TOP PERFORMERS

PREMIUM LINE KNITS

High-end fashion knit headwear designed for ultimate comfort & style.

iK8554

PREMIUM IMPORT IN STOCK KNIT

PREMIUM DIAGONAL WEAVE KNIT CAP WITH CUFF

- ▶ premium tri-blend (rayon/polyester/nylon) knit cap with solid color ribbed cuff & pom
- ▶ polyester fleece lined earband
- ▶ ultra-soft diagonal weave pattern in crown
- ▶ tonal CA shield embroidered on cuff

Pricing does not include optional **Sewn-on Woven Loop Label**. Please see **pages 36-39** for additional information about patches & appliques. Adding a patch or applique will increase production time.



AVAILABLE QUANTITY BREAKS:

DECORATED	15*	24	48	96	144	576	2500+
BLANK	1*	24	48	96	144	576	2500+

*COLUMN PRICING APPLIES AT THESE QUANTITIES. SCAN THE QR CODE FOR THE MOST UP TO DATE PRICING. PLEASE SEE CAPAMERICA.COM FOR ALL ADDITIONAL INFORMATION.



NEW STYLE

Shown with optional **Sewn-on Woven Loop Label**



BLACK



CIDER



DARK HEATHER



HEATHER



IVORY



MERLOT



NAVY



OLIVE

PREMIUM LINE KNITS

capamerica.com



iK8550

TOP PERFORMER PREMIUM IMPORT IN STOCK KNIT

PREMIUM KNIT CAP WITH CUFF

- ▶ premium tri-blend (rayon/polyester/nylon) knit cap with solid color ribbed cuff
- ▶ ultra-soft ribbing throughout
- ▶ tonal CA shield embroidered on cuff

Pricing does not include optional **Sewn-on FlexStyle® Appliqué**. Please see pages 36-39 for additional information about patches & appliques. \$1.40(A) each to add a standard pom. Adding either will increase production time.



AVAILABLE QUANTITY BREAKS:

DECORATED	15*	24	48	96	144	576	2500+
BLANK	1*	24	48	96	144	576	2500+

*COLUMN PRICING APPLIES AT THESE QUANTITIES. SCAN THE QR CODE FOR THE MOST UP TO DATE PRICING. PLEASE SEE CAPAMERICA.COM FOR ALL ADDITIONAL INFORMATION.



Shown with optional **Sewn-on FlexStyle® Appliqué**



Shown with optional **Faux Fur Pom**



Stitch Count: 10,098

iK8552

PREMIUM IMPORT IN STOCK KNIT

PREMIUM WAFFLE KNIT CAP WITH CUFF

- ▶ premium tri-blend (rayon/polyester/nylon) knit cap with solid color ribbed cuff
- ▶ ultra-soft deep waffle-knit crown
- ▶ tonal CA shield embroidered on cuff

Pricing does not include optional **Faux Fur Pom**. \$1.40(A) each to add a standard pom. Adding either will increase production time.



AVAILABLE QUANTITY BREAKS:

DECORATED	15*	24	48	96	144	576	2500+
BLANK	1*	24	48	96	144	576	2500+

*COLUMN PRICING APPLIES AT THESE QUANTITIES. SCAN THE QR CODE FOR THE MOST UP TO DATE PRICING. PLEASE SEE CAPAMERICA.COM FOR ALL ADDITIONAL INFORMATION.

FAUX FUR POMS

ADD A **BROWN** OR **BLACK** POM TO ANY KNIT STYLE FOR ONLY **\$5.00(A)** EACH!



PREMIUM LINE KNITS

capamerica.com



IMPORT IN STOCK KNITS

Stay warm & relevant with retail inspired imported in stock knit options.

iK23

IMPORT IN STOCK KNIT

DIAGONAL DASH KNIT CAP WITH RIBBED CUFF

- ▶ 100% acrylic knit cap
- ▶ solid color ribbed cuff with solid color pom
- ▶ white diagonal dashed knit-in pattern throughout crown



AVAILABLE QUANTITY BREAKS:

DECORATED	24	48	96	144	576	2500+	
BLANK	1*	24	48	96	144	576	2500+

*COLUMN PRICING APPLIES AT THIS QUANTITY. SCAN THE QR CODE FOR THE MOST UP TO DATE PRICING. PLEASE SEE CAPAMERICA.COM FOR ALL ADDITIONAL INFORMATION.



NEW STYLE

Stitch Count: 14,440



BLACK

CHARCOAL

LIGHT MAROON

NAVY

OLIVE

RED

ROYAL

SLATE BLUE



Stitch Count: 7,214

iK55

TOP PERFORMER IMPORT IN STOCK KNIT

CABLE KNIT CAP WITH CUFF

- ▶ 100% acrylic knit cap with cuff
- ▶ solid color cuff & pom
- ▶ polyester fleece lined earband



AVAILABLE QUANTITY BREAKS:

DECORATED	24	48	96	144	576	2500+	
BLANK	1*	24	48	96	144	576	2500+

*COLUMN PRICING APPLIES AT THIS QUANTITY. SCAN THE QR CODE FOR THE MOST UP TO DATE PRICING. PLEASE SEE CAPAMERICA.COM FOR ALL ADDITIONAL INFORMATION.



BLACK

CHARCOAL

IVORY

LIGHT MAROON

NAVY

OLIVE

IMPORT IN STOCK KNITS

capamerica.com





iK22

IMPORT IN STOCK KNIT

KNIT CAP WITH RIBBED CUFF

- ▶ 100% acrylic knit cap
- ▶ solid color ribbed cuff
- ▶ polyester fleece lined earband

\$1.40(A) each to add a standard pom. Adding a pom will increase production time.



AVAILABLE QUANTITY BREAKS:

DECORATED	24	48	96	144	576	2500+	
BLANK	1*	24	48	96	144	576	2500+

*COLUMN PRICING APPLIES AT THIS QUANTITY. SCAN THE QR CODE FOR THE MOST UP TO DATE PRICING. PLEASE SEE CAPAMERICA.COM FOR ALL ADDITIONAL INFORMATION.

NEW STYLE



Stitch Count: 14,054



BLACK



BLAZE



DARK HEATHER



HEATHER



HUNTER GREEN



LIGHT MAROON



MAGENTA



NAVY



RED



ROYAL

IMPORT IN STOCK KNITS

capamerica.com

PRICE INCLUDES
10,000
STITCHES

FREE
EMBROIDERY
TAPES

iK56

IMPORT IN STOCK KNIT

DOUBLE STRIPE KNIT CAP WITH RIBBED CUFF

- ▶ acrylic/polyester blend knit cap with ribbed cuff
- ▶ solid color cuff with stripes on crown
- ▶ solid color heather pom



AVAILABLE QUANTITY BREAKS:

DECORATED	24	48	96	144	576	2500+	
BLANK	1*	24	48	96	144	576	2500+

*COLUMN PRICING APPLIES AT THIS QUANTITY. SCAN THE QR CODE FOR THE MOST UP TO DATE PRICING. PLEASE SEE CAPAMERICA.COM FOR ALL ADDITIONAL INFORMATION.



Stitch Count: 5,210



HEATHER/BLACK WHITE



HEATHER/DARK HEATHER/WHITE



HEATHER/LIGHT MAROON/WHITE



HEATHER/NAVY WHITE



HEATHER/RED WHITE



HEATHER/ROYAL WHITE



Shown with optional Sewn-on Molded Rubber Patch

iK65

TOP PERFORMER IMPORT IN STOCK KNIT

FLEECE LINED KNIT CAP WITH CUFF

- ▶ 100% acrylic knit cap with solid color cuff & two-color pom
- ▶ polyester fleece lining
- ▶ alternating stripes of variegated & solid color yarn

Pricing does not include optional **Sewn-on Molded Rubber Patch**. Please see [pages 36-39](#) for additional information about patches & appliques. Adding a patch or applique will increase production time.



AVAILABLE QUANTITY BREAKS:

DECORATED	24	48	96	144	576	2500+	
BLANK	1*	24	48	96	144	576	2500+

*COLUMN PRICING APPLIES AT THIS QUANTITY. SCAN THE QR CODE FOR THE MOST UP TO DATE PRICING. PLEASE SEE CAPAMERICA.COM FOR ALL ADDITIONAL INFORMATION.



BLACK/GOLD WHITE



BLACK/HEATHER WHITE



CARDINAL/DARK HEATHER/WHITE



DARK HEATHER HEATHER/WHITE



HUNTER GREEN HEATHER/WHITE



NAVY/HEATHER WHITE



NAVY/RED WHITE



ORANGE/BLACK WHITE



RED/HEATHER WHITE



ROYAL/DARK HEATHER/WHITE

IMPORT IN STOCK KNITS

capamerica.com



IMPORT IN STOCK KNITS

POLYLANA®

Reduces environmental impact
 Reduces pressure on virgin resources
 Reduces plastic pollution in our environment

#BelieveInBetter

Our iK37 is made from Polylana® branded fibers which are made from a mixture of virgin & recycled materials to create an innovative fiber with characteristics similar to acrylic or wool fiber. Polylana® saves on water, reduces environmental impact & is 100% traceable.

iK37

RECYCLED CONTENT **NEW COLOR** **IMPORT IN STOCK KNIT**

SUSTAINABLE CUFFED KNIT WITH POLYLANA® FIBER

- ▶ 60% polyester (Polylana®)/40% acrylic blend knit cap with cuff
- ▶ variegated ribbing throughout
- ▶ this product contains 30% post-consumer recycled content

Pricing does not include optional **Sewn-on Embroidered Patch**. Please see **pages 36-39** for additional information about patches & appliques. \$1.40(A) each to add a standard pom. Adding either will increase production time.



AVAILABLE QUANTITY BREAKS:

DECORATED	24	48	96	144	576	2500+	
BLANK	1*	24	48	96	144	576	2500+

*COLUMN PRICING APPLIES AT THIS QUANTITY. SCAN THE QR CODE FOR THE MOST UP TO DATE PRICING. PLEASE SEE CAPAMERICA.COM FOR ALL ADDITIONAL INFORMATION.



Shown with optional **Sewn-on Embroidered Patch**

POLYLANA®



RED



BLACK



GRAY



MIDNIGHT

NEED OTHER OPTIONS FEATURING RECYCLED CONTENT?

We also offer two great USA made in stock knit options that are made from recycled content. Check them out on **page 29**.



Stitch Count: 8,514

iK57

IMPORT IN STOCK KNIT

HEAVY RIBBED KNIT CAP WITH CUFF

- ▶ 100% acrylic knit cap with solid color cuff & two-color pom
- ▶ polyester fleece lined earband
- ▶ alternating bands of solid & dual color textured knit pattern



AVAILABLE QUANTITY BREAKS:

DECORATED	24	48	96	144	576	2500+	
BLANK	1*	24	48	96	144	576	2500+

*COLUMN PRICING APPLIES AT THIS QUANTITY. SCAN THE QR CODE FOR THE MOST UP TO DATE PRICING. PLEASE SEE CAPAMERICA.COM FOR ALL ADDITIONAL INFORMATION.



BLACK/WHITE



DARK HEATHER/WHITE/BLACK



RED/WHITE/BLACK



ROYAL/WHITE/BLACK

IMPORT IN STOCK KNITS

capamerica.com



iK70

IMPORT IN STOCK KNIT

WAFFLE KNIT CAP WITH CUFF

► acrylic or acrylic/polyester blend knit cap with solid color cuff

\$1.40(A) each to add a standard pom. Adding a pom will increase production time.



AVAILABLE QUANTITY BREAKS:

DECORATED	24	48	96	144	576	2500+	
BLANK	1*	24	48	96	144	576	2500+

*COLUMN PRICING APPLIES AT THIS QUANTITY. SCAN THE QR CODE FOR THE MOST UP TO DATE PRICING. PLEASE SEE CAPAMERICA.COM FOR ALL ADDITIONAL INFORMATION.



Stitch Count: 8,847



Shown with optional **Sewn-on Debossed Leather Patch**

iK75

IMPORT IN STOCK KNIT

WAFFLE BEANIE

► acrylic or acrylic/polyester blend knit beanie

Pricing does not include optional **Sewn-on Debossed Leather Patch**. Please see pages 36-39 for additional information about patches & appliques. \$1.40(A) each to add a standard pom. Adding either will increase production time.



AVAILABLE QUANTITY BREAKS:

DECORATED	24	48	96	144	576	2500+	
BLANK	1*	24	48	96	144	576	2500+

*COLUMN PRICING APPLIES AT THIS QUANTITY. SCAN THE QR CODE FOR THE MOST UP TO DATE PRICING. PLEASE SEE CAPAMERICA.COM FOR ALL ADDITIONAL INFORMATION.



DEBOSSED LEATHER PATCHES

Faux & genuine options are available! Check out pages 36-39 for more details on patches & appliques (sewn to attach on all knits).



IMPORT IN STOCK KNITS

capamerica.com



IMPORT IN STOCK KNITS



TIMELESS
MASONRY
N.J. MADE IN U.S.A.

iK58

IMPORT IN STOCK KNIT

REFLECTIVE BEANIE

- ▶ acrylic knit beanie
- ▶ poly blend reflective stripes in crown

\$1.40(A) each to add a standard pom. Adding a pom will increase production time.



Stitch Count: 15,935



AVAILABLE QUANTITY BREAKS:

DECORATED	24	48	96	144	576	2500+
BLANK	1*	24	48	96	144	2500+

*COLUMN PRICING APPLIES AT THIS QUANTITY. SCAN THE QR CODE FOR THE MOST UP TO DATE PRICING. PLEASE SEE CAPAMERICA.COM FOR ALL ADDITIONAL INFORMATION.



BLACK HI-VIS ORANGE HI-VIS YELLOW NAVY

iK59

IMPORT IN STOCK KNIT

REFLECTIVE KNIT CAP WITH CUFF

- ▶ acrylic knit cap with heavy ribbed cuff
- ▶ poly blend reflective stripes in crown

\$1.40(A) each to add a standard pom. Adding a pom will increase production time.



Stitch Count: 7,174



AVAILABLE QUANTITY BREAKS:

DECORATED	24	48	96	144	576	2500+
BLANK	1*	24	48	96	144	2500+

*COLUMN PRICING APPLIES AT THIS QUANTITY. SCAN THE QR CODE FOR THE MOST UP TO DATE PRICING. PLEASE SEE CAPAMERICA.COM FOR ALL ADDITIONAL INFORMATION.



BLACK HI-VIS ORANGE HI-VIS YELLOW NAVY

iK40

IMPORT IN STOCK KNIT

CAMOUFLAGE FLEECE BEANIE

- ▶ 100% poly micro Realtree AP® camouflaged fleece beanie
- ▶ anti-pill finish



Stitch Count: 3,415



AVAILABLE QUANTITY BREAKS:

DECORATED	24	48	96	144	576	2500+
BLANK	1*	24	48	96	144	2500+

*COLUMN PRICING APPLIES AT THIS QUANTITY. SCAN THE QR CODE FOR THE MOST UP TO DATE PRICING. PLEASE SEE CAPAMERICA.COM FOR ALL ADDITIONAL INFORMATION.

iK95

IMPORT IN STOCK KNIT

FLEECE BEANIE

- ▶ 100% poly micro fleece beanie
- ▶ anti-pill finish



Stitch Count: 4,220



AVAILABLE QUANTITY BREAKS:

DECORATED	24	48	96	144	576	2500+
BLANK	1*	24	48	96	144	2500+

*COLUMN PRICING APPLIES AT THIS QUANTITY. SCAN THE QR CODE FOR THE MOST UP TO DATE PRICING. PLEASE SEE CAPAMERICA.COM FOR ALL ADDITIONAL INFORMATION.



BLACK BLAZE DARK GRAY LIGHT GRAY NAVY

IMPORT IN STOCK KNITS

capamerica.com



USA MADE IN STOCK KNITS

Ready knit styles that are made in the USA of imported yarn & kept in stock for a quick turn-time.

RKT12

USA MADE IN STOCK KNIT

THIN STRIPED KNIT CAP WITH CUFF

- ▶ acrylic/nylon/spandex blend knit cap with cuff
- ▶ thin heather stripes on crown
- ▶ solid color cuff

\$1.40(A) each to add a standard pom. Adding a pom will increase production time.



AVAILABLE QUANTITY BREAKS:

DECORATED	24	48	96	144	576	2500+	
BLANK	1*	24	48	96	144	576	2500+

*COLUMN PRICING APPLIES AT THIS QUANTITY. SCAN THE QR CODE FOR THE MOST UP TO DATE PRICING. PLEASE SEE CAPAMERICA.COM FOR ALL ADDITIONAL INFORMATION.



Stitch Count: 7,377



BLACK



IRON GRAY



TRUE NAVY



TRUE RED



TRUE ROYAL



Stitch Count: 9,159

RKL12

USA MADE IN STOCK KNIT

STRIPED KNIT CAP WITH CUFF

- ▶ acrylic/nylon/spandex blend knit cap with cuff
- ▶ alternating stripes of black & white variegated yarn with dark heather, heather & one accent color
- ▶ solid dark heather cuff with matching three-color pom



AVAILABLE QUANTITY BREAKS:

DECORATED	24	48	96	144	576	2500+	
BLANK	1*	24	48	96	144	576	2500+

*COLUMN PRICING APPLIES AT THIS QUANTITY. SCAN THE QR CODE FOR THE MOST UP TO DATE PRICING. PLEASE SEE CAPAMERICA.COM FOR ALL ADDITIONAL INFORMATION.



BLACK



FOREST GREEN



TRUE NAVY



TRUE RED



TRUE ROYAL

USA MADE IN STOCK KNITS

capamerica.com





ROSE HILL
FINANCIAL INVESTORS



RKS9

USA MADE IN STOCK KNIT

STATIC PATTERN KNIT BEANIE

- ▶ acrylic/nylon/spandex blend knit beanie
- ▶ two-color knit beanie
- ▶ knit-in static design throughout

\$1.40(A) each to add a standard pom. Adding a pom will increase production time.



AVAILABLE QUANTITY BREAKS:

DECORATED	24	48	96	144	576	2500+	
BLANK	1*	24	48	96	144	576	2500+

*COLUMN PRICING APPLIES AT THIS QUANTITY. SCAN THE QR CODE FOR THE MOST UP TO DATE PRICING. PLEASE SEE CAPAMERICA.COM FOR ALL ADDITIONAL INFORMATION.



Stitch Count: 8,501



Shown with optional **Sewn-on FlexStyle® Appliqué**

RKS12

TOP PERFORMER USA MADE IN STOCK KNIT

STATIC PATTERN KNIT CAP WITH CUFF

- ▶ acrylic/nylon/spandex blend knit cap with cuff
- ▶ multicolor knit cap with solid color cuff
- ▶ knit-in static design throughout

Pricing does not include optional **Sewn-on FlexStyle® Appliqué**. Please see pages 36-39 for additional information about patches & appliqués. \$1.40(A) each to add a standard pom. Adding either will increase production time.



AVAILABLE QUANTITY BREAKS:

DECORATED	24	48	96	144	576	2500+	
BLANK	1*	24	48	96	144	576	2500+

*COLUMN PRICING APPLIES AT THIS QUANTITY. SCAN THE QR CODE FOR THE MOST UP TO DATE PRICING. PLEASE SEE CAPAMERICA.COM FOR ALL ADDITIONAL INFORMATION.



USA MADE IN STOCK KNITS

capamerica.com

MADE IN USA
OF IMPORTED YARN

PRICE INCLUDES
10,000
STITCHES

FREE
EMBROIDERY
TAPES

USA MADE IN STOCK KNITS

LASER-ETCHED LEATHER PATCHES

Faux & genuine options are available! Check out pages 36-39 for more details on patches & appliques (sewn to attach on all knits).



RKP12

USA MADE IN STOCK KNIT

PLAID KNIT CAP WITH CUFF

- ▶ acrylic/nylon/spandex blend knit cap with cuff
- ▶ plaid knit-in pattern on crown with solid color cuff

Pricing does not include optional **Sewn-on Laser-Etched Leather Loop Label**. Please see pages 36-39 for additional information about patches & appliques. \$1.40(A) each to add a standard pom. Adding either will increase production time.



AVAILABLE QUANTITY BREAKS:

DECORATED	24	48	96	144	576	2500+	
BLANK	1*	24	48	96	144	576	2500+

*COLUMN PRICING APPLIES AT THIS QUANTITY. SCAN THE QR CODE FOR THE MOST UP TO DATE PRICING. PLEASE SEE CAPAMERICA.COM FOR ALL ADDITIONAL INFORMATION.



Shown with optional **Sewn-on Laser-Etched Leather Loop Label**



DARK HEATHER/BLACK

HEATHER/MAROON

OLIVE/BLACK

TRUE RED/BLACK

TRUE ROYAL/BLACK

WHITE/BLACK

WHITE/SILVER

WHITE/TRUE NAVY



Stitch Count: 13,509

RKD12

USA MADE IN STOCK KNIT

DIAMOND PATTERN KNIT CAP WITH CUFF

- ▶ acrylic/nylon/spandex blend knit cap with cuff
- ▶ two-color diamond pattern in silver & white throughout crown with solid color cuff

\$1.40(A) each to add a standard pom. Adding a pom will increase production time.



AVAILABLE QUANTITY BREAKS:

DECORATED	24	48	96	144	576	2500+	
BLANK	1*	24	48	96	144	576	2500+

*COLUMN PRICING APPLIES AT THIS QUANTITY. SCAN THE QR CODE FOR THE MOST UP TO DATE PRICING. PLEASE SEE CAPAMERICA.COM FOR ALL ADDITIONAL INFORMATION.



BLACK

IRON GRAY

MAROON

OLIVE

TRUE NAVY

TRUE RED

TRUE ROYAL

USA MADE IN STOCK KNITS

capamerica.com





NORTHEAST
OUTDOOR



HAND ROLLED
CANDY CANES
each

Holiday Festival

RKF12

TOP PERFORMER USA MADE IN STOCK KNIT

SNOWFLAKE KNIT CAP WITH CUFF

- ▶ acrylic/nylon/spandex blend knit cap with cuff
- ▶ snowflake pattern throughout crown
- ▶ solid color cuff with two-color pom

Pricing does not include optional **Sewn-on Sublimated Patch**. Please see pages 36-39 for additional information about patches & appliques. Adding a patch or applique will increase production time.



AVAILABLE QUANTITY BREAKS:

DECORATED	24	48	96	144	576	2500+
BLANK	1*	24	48	96	144	2500+

*COLUMN PRICING APPLIES AT THIS QUANTITY. SCAN THE QR CODE FOR THE MOST UP TO DATE PRICING. PLEASE SEE CAPAMERICA.COM FOR ALL ADDITIONAL INFORMATION.



Shown with optional **Sewn-on Sublimated Patch**



BLACK

FOREST GREEN

SILVER

TRUE NAVY

TRUE RED

TRUE ROYAL



Stitch Count: 19,350



BLACK

TRUE NAVY

TRUE RED

TRUE ROYAL

RKF60

USA MADE IN STOCK KNIT

SNOWFLAKE SCARF

- ▶ acrylic/nylon/spandex blend 60 inch scarf with elite fringe
- ▶ snowflake pattern on ends; geometric pattern throughout
- ▶ solid white decoration area



AVAILABLE QUANTITY BREAKS:

DECORATED	24	48	96	144	576	2500+
BLANK	1*	24	48	96	144	2500+

*COLUMN PRICING APPLIES AT THIS QUANTITY. SCAN THE QR CODE FOR THE MOST UP TO DATE PRICING. PLEASE SEE CAPAMERICA.COM FOR ALL ADDITIONAL INFORMATION.

USA MADE IN STOCK KNITS

capamerica.com

MADE IN USA
OF IMPORTED YARN

PRICE INCLUDES
10,000
STITCHES

FREE
EMBROIDERY
TAPES

USA MADE IN STOCK KNITS

RKB12

USA MADE IN STOCK KNIT

BAR KNIT CAP WITH CUFF

- ▶ acrylic/nylon/spandex blend knit cap with cuff
- ▶ staggered bar pattern throughout crown
- ▶ solid color cuff with matching three-color pom



AVAILABLE QUANTITY BREAKS:

DECORATED	24	48	96	144	576	2500+	
BLANK	1*	24	48	96	144	576	2500+

*COLUMN PRICING APPLIES AT THIS QUANTITY. SCAN THE QR CODE FOR THE MOST UP TO DATE PRICING. PLEASE SEE CAPAMERICA.COM FOR ALL ADDITIONAL INFORMATION.



Stitch Count: 7,640

NEED A DIFFERENT COLOR COMBINATION?

CREATE A CUSTOM VERSION OF ANY OF OUR MADE IN USA IN STOCK KNIT STYLES BY CHOOSING FROM OUR AVAILABLE YARN COLORS ON PAGE 35.

*PRICING WILL VARY FROM AVAILABLE IN STOCK COLOR OPTIONS.



BLACK/ATHLETIC GOLD WHITE



BLACK/DEEP ORANGE WHITE



BLACK/HEATHER WHITE



BLACK/TRUE RED WHITE



TRUE NAVY/HEATHER WHITE



TRUE NAVY/TRUE RED WHITE



TRUE ROYAL/HEATHER WHITE

RKV9

USA MADE IN STOCK KNIT

VARIEGATED STRIPED BEANIE

- ▶ acrylic/nylon/spandex blend knit beanie
- ▶ black & white variegated yarn with contrasting stripes

\$1.40(A) each to add a standard pom. Adding a pom will increase production time.



Stitch Count: 4,685



AVAILABLE QUANTITY BREAKS:

DECORATED	24	48	96	144	576	2500+	
BLANK	1*	24	48	96	144	576	2500+

*COLUMN PRICING APPLIES AT THIS QUANTITY. SCAN THE QR CODE FOR THE MOST UP TO DATE PRICING. PLEASE SEE CAPAMERICA.COM FOR ALL ADDITIONAL INFORMATION.



BLACK NEON BLAZE



BLACK NEON PINK



BLACK NEON YELLOW



BLACK SILVER



BLACK TRUE RED



BLACK TRUE ROYAL

RKV12

USA MADE IN STOCK KNIT

VARIEGATED STRIPED KNIT CAP WITH CUFF

- ▶ acrylic/nylon/spandex blend knit cap with solid color cuff
- ▶ black & white variegated yarn with contrasting stripes

\$1.40(A) each to add a standard pom. Adding a pom will increase production time.



Stitch Count: 16,533



AVAILABLE QUANTITY BREAKS:

DECORATED	24	48	96	144	576	2500+	
BLANK	1*	24	48	96	144	576	2500+

*COLUMN PRICING APPLIES AT THIS QUANTITY. SCAN THE QR CODE FOR THE MOST UP TO DATE PRICING. PLEASE SEE CAPAMERICA.COM FOR ALL ADDITIONAL INFORMATION.



BLACK NEON BLAZE



BLACK NEON PINK



BLACK NEON YELLOW



BLACK SILVER



BLACK TRUE RED



BLACK TRUE ROYAL

USA MADE IN STOCK KNITS

capamerica.com

MADE IN USA
OF IMPORTED YARN

PRICE INCLUDES
10,000
STITCHES

FREE
EMBROIDERY
TAPES

RKH12

USA MADE IN STOCK KNIT

HALF COLOR KNIT CAP WITH CUFF

- ▶ acrylic/nylon/spandex blend knit cap with cuff
- ▶ split stripe knit-in design with heather background on crown
- ▶ contrasting stripes with solid color cuff & pom

Pricing does not include optional **Sewn-on Laser Etched Leather Patch**. Please see pages 36-39 for additional information about patches & appliques. Adding a patch or applique will increase production time.



AVAILABLE QUANTITY BREAKS:

DECORATED	24	48	96	144	576	2500+
BLANK	1*	24	48	96	144	2500+

*COLUMN PRICING APPLIES AT THIS QUANTITY. SCAN THE QR CODE FOR THE MOST UP TO DATE PRICING. PLEASE SEE CAPAMERICA.COM FOR ALL ADDITIONAL INFORMATION.



Shown with optional **Sewn-on Laser Etched Leather Patch**



BLACK/WHITE



HEATHER/WHITE



TRUE NAVY/WHITE



TRUE RED/WHITE



TRUE ROYAL/WHITE



Stitch Count: 30,303



BLACK



DARK HEATHER



TRUE NAVY



TRUE RED



TRUE ROYAL

RK60

USA MADE IN STOCK KNIT

60 INCH SCARF WITH ELITE FRINGE

- ▶ acrylic/nylon/spandex blend 60 inch scarf with elite fringe
- ▶ contrasting stripes with solid heather decoration area



AVAILABLE QUANTITY BREAKS:

DECORATED	24	48	96	144	576	2500+
BLANK	1*	24	48	96	144	2500+

*COLUMN PRICING APPLIES AT THIS QUANTITY. SCAN THE QR CODE FOR THE MOST UP TO DATE PRICING. PLEASE SEE CAPAMERICA.COM FOR ALL ADDITIONAL INFORMATION.

USA MADE IN STOCK KNITS

capamerica.com

MADE IN USA
OF IMPORTED YARN

PRICE INCLUDES
10,000
STITCHES

FREE
EMBROIDERY
TAPES

USA MADE IN STOCK KNITS



RKFLAG12

USA MADE IN STOCK KNIT

FLAG KNIT CAP WITH CUFF

- ▶ acrylic/nylon/spandex blend knit cap with cuff
- ▶ three-color USA flag patterned knit cap with solid color cuff

Pricing does not include optional **Sewn-on Embroidered Patch**. Please see pages 36-39 for additional information about patches & appliques. \$1.40(A) each to add a standard pom. Adding either will increase production time.



AVAILABLE QUANTITY BREAKS:

DECORATED	24	48	96	144	576	2500+
BLANK	1*	24	48	96	144	2500+

*COLUMN PRICING APPLIES AT THIS QUANTITY. SCAN THE QR CODE FOR THE MOST UP TO DATE PRICING. PLEASE SEE CAPAMERICA.COM FOR ALL ADDITIONAL INFORMATION.



Shown with optional **Sewn-on Embroidered Patch**

RKUSA12

USA MADE IN STOCK KNIT

PATRIOTIC KNIT CAP WITH CUFF

- ▶ acrylic/nylon/spandex blend knit cap with solid color cuff
- ▶ "USA" text & four vertical stripes on crown

\$1.40(A) each to add a standard pom. Adding a pom will increase production time.



Stitch Count: 6,582



AVAILABLE QUANTITY BREAKS:

DECORATED	24	48	96	144	576	2500+
BLANK	1*	24	48	96	144	2500+

*COLUMN PRICING APPLIES AT THIS QUANTITY. SCAN THE QR CODE FOR THE MOST UP TO DATE PRICING. PLEASE SEE CAPAMERICA.COM FOR ALL ADDITIONAL INFORMATION.

RKSTAR12

USA MADE IN STOCK KNIT

STARS & STRIPES KNIT CAP WITH CUFF

- ▶ acrylic/nylon/spandex blend knit cap with solid color cuff
- ▶ four stars & vertical stripes on crown

\$1.40(A) each to add a standard pom. Adding a pom will increase production time.



Stitch Count: 10,071



AVAILABLE QUANTITY BREAKS:

DECORATED	24	48	96	144	576	2500+
BLANK	1*	24	48	96	144	2500+

*COLUMN PRICING APPLIES AT THIS QUANTITY. SCAN THE QR CODE FOR THE MOST UP TO DATE PRICING. PLEASE SEE CAPAMERICA.COM FOR ALL ADDITIONAL INFORMATION.



BLACK/IRON GRAY



KHAKI/OLIVE



OLIVE/KHAKI



TRUE NAVY/WHITE
TRUE RED



BLACK/IRON GRAY



KHAKI/OLIVE



OLIVE/KHAKI



TRUE NAVY/WHITE
TRUE RED



A PORTION OF THE PROCEEDS FROM THESE KNITS ARE DONATED TO CAMP HOPE.

Camp Hope is a retreat for military veterans wounded in the War on Terror. Their mission is to honor the fallen by helping the wounded. Camp Hope is 100% funded by donations & volunteerism – there is no paid staff or overhead. Proceeds donated to Camp Hope directly benefit our service men & women who gave selflessly for our freedoms by providing all-expenses-paid adventures & comradery. Visit their website at www.CampHopeUSA.org or check out our [Camp Hope Give Back](#) page to learn more.

USA MADE IN STOCK KNITS

capamerica.com





RKTC9

USA MADE IN STOCK KNIT

VINTAGE TIGER CAMOUFLAGE KNIT BEANIE

- ▶ acrylic/nylon/spandex blend knit beanie
- ▶ vintage tiger camouflage knit-in pattern

Pricing does not include optional **Sewn-on Woven Patch**. Please see **pages 36-39** for additional information about patches & appliques. Adding a patch or applique will increase production time.



Shown with optional **Sewn-on Woven Patch**

\$1.40(A) each to add a standard pom. Adding a pom will increase production time.



AVAILABLE QUANTITY BREAKS:

DECORATED	24	48	96	144	576	2500+	
BLANK	1*	24	48	96	144	576	2500+

*COLUMN PRICING APPLIES AT THIS QUANTITY. SCAN THE QR CODE FOR THE MOST UP TO DATE PRICING. PLEASE SEE CAPAMERICA.COM FOR ALL ADDITIONAL INFORMATION.

RKTC12

USA MADE IN STOCK KNIT

VINTAGE TIGER CAMOUFLAGE KNIT CAP WITH SOLID COLOR CUFF

- ▶ acrylic/nylon/spandex blend knit cap with solid color cuff
- ▶ vintage tiger camouflage knit-in pattern



Stitch Count: 6,774

\$1.40(A) each to add a standard pom. Adding a pom will increase production time.



AVAILABLE QUANTITY BREAKS:

DECORATED	24	48	96	144	576	2500+	
BLANK	1*	24	48	96	144	576	2500+

*COLUMN PRICING APPLIES AT THIS QUANTITY. SCAN THE QR CODE FOR THE MOST UP TO DATE PRICING. PLEASE SEE CAPAMERICA.COM FOR ALL ADDITIONAL INFORMATION.

USA MADE IN STOCK KNITS

capamerica.com



RKUC9

USA MADE IN STOCK KNIT

URBAN CAMOUFLAGE KNIT BEANIE

- ▶ acrylic/nylon/spandex blend knit beanie
- ▶ urban camouflage knit-in pattern



Stitch Count: 7,062

\$1.40(A) each to add a standard pom. Adding a pom will increase production time.



AVAILABLE QUANTITY BREAKS:

DECORATED	24	48	96	144	576	2500+	
BLANK	1*	24	48	96	144	576	2500+

*COLUMN PRICING APPLIES AT THIS QUANTITY. SCAN THE QR CODE FOR THE MOST UP TO DATE PRICING. PLEASE SEE CAPAMERICA.COM FOR ALL ADDITIONAL INFORMATION.

RKUC12

USA MADE IN STOCK KNIT

URBAN CAMOUFLAGE KNIT CAP WITH SOLID COLOR CUFF

- ▶ acrylic/nylon/spandex blend knit cap with solid color cuff
- ▶ urban camouflage knit-in pattern



Stitch Count: 15,186

\$1.40(A) each to add a standard pom. Adding a pom will increase production time.



AVAILABLE QUANTITY BREAKS:

DECORATED	24	48	96	144	576	2500+	
BLANK	1*	24	48	96	144	576	2500+

*COLUMN PRICING APPLIES AT THIS QUANTITY. SCAN THE QR CODE FOR THE MOST UP TO DATE PRICING. PLEASE SEE CAPAMERICA.COM FOR ALL ADDITIONAL INFORMATION.

RKWC9

USA MADE IN STOCK KNIT

WOODLAND CAMOUFLAGE KNIT BEANIE

- ▶ acrylic/nylon/spandex blend knit beanie
- ▶ woodland camouflage knit-in pattern



Stitch Count: 17,262

\$1.40(A) each to add a standard pom. Adding a pom will increase production time.



AVAILABLE QUANTITY BREAKS:

DECORATED	24	48	96	144	576	2500+	
BLANK	1*	24	48	96	144	576	2500+

*COLUMN PRICING APPLIES AT THIS QUANTITY. SCAN THE QR CODE FOR THE MOST UP TO DATE PRICING. PLEASE SEE CAPAMERICA.COM FOR ALL ADDITIONAL INFORMATION.

RKWC12

USA MADE IN STOCK KNIT

WOODLAND CAMOUFLAGE KNIT CAP WITH SOLID COLOR CUFF

- ▶ acrylic/nylon/spandex blend knit cap with solid color cuff
- ▶ woodland camouflage knit-in pattern



Stitch Count: 6,760

\$1.40(A) each to add a standard pom. Adding a pom will increase production time.



AVAILABLE QUANTITY BREAKS:

DECORATED	24	48	96	144	576	2500+	
BLANK	1*	24	48	96	144	576	2500+

*COLUMN PRICING APPLIES AT THIS QUANTITY. SCAN THE QR CODE FOR THE MOST UP TO DATE PRICING. PLEASE SEE CAPAMERICA.COM FOR ALL ADDITIONAL INFORMATION.

USA MADE IN STOCK KNITS

capamerica.com



TKN24

NEW COLORS TOP PERFORMER USA MADE IN STOCK KNIT

KNIT CAP WITH CUFF

► 100% acrylic pro rib Tompkin knit cap with cuff

\$1.40(A) each to add a standard pom. Adding a pom will increase production time.



AVAILABLE QUANTITY BREAKS:

DECORATED	24	48	96	144	576	2500+	
BLANK	1*	24	48	96	144	576	2500+

*COLUMN PRICING APPLIES AT THIS QUANTITY. SCAN THE QR CODE FOR THE MOST UP TO DATE PRICING. PLEASE SEE CAPAMERICA.COM FOR ALL ADDITIONAL INFORMATION.



Stitch Count: 12,821



Stitch Count: 7,004

TKN28

NEW COLORS TOP PERFORMER USA MADE IN STOCK KNIT

KNIT BEANIE

► 100% acrylic pro rib Tompkin knit beanie

\$1.40(A) each to add a standard pom. Adding a pom will increase production time.



AVAILABLE QUANTITY BREAKS:

DECORATED	24	48	96	144	576	2500+	
BLANK	1*	24	48	96	144	576	2500+

*COLUMN PRICING APPLIES AT THIS QUANTITY. SCAN THE QR CODE FOR THE MOST UP TO DATE PRICING. PLEASE SEE CAPAMERICA.COM FOR ALL ADDITIONAL INFORMATION.

TKN COLOR OPTIONS



USA MADE IN STOCK KNITS

capamerica.com

MADE IN USA
OF IMPORTED YARN

PRICE INCLUDES
10,000
STITCHES

FREE
EMBROIDERY
TAPES



SKN24

RECYCLED CONTENT USA MADE IN STOCK KNIT

SUSTAINABLE KNIT CAP WITH CUFF

- ▶ pro rib Tompkin knit cap with cuff
- ▶ 50% recycled post-consumer polyester/50% acrylic blend

\$1.40(A) each to add a standard pom. Adding a pom will increase production time.



Stitch Count: 5,435



AVAILABLE QUANTITY BREAKS:

DECORATED	24	48	96	144	576	2500+	
BLANK	1*	24	48	96	144	576	2500+

*COLUMN PRICING APPLIES AT THIS QUANTITY. SCAN THE QR CODE FOR THE MOST UP TO DATE PRICING. PLEASE SEE CAPAMERICA.COM FOR ALL ADDITIONAL INFORMATION.

SKN28

RECYCLED CONTENT USA MADE IN STOCK KNIT

SUSTAINABLE KNIT BEANIE

- ▶ pro rib Tompkin knit beanie
- ▶ 50% recycled post-consumer polyester/50% acrylic blend

\$1.40(A) each to add a standard pom. Adding a pom will increase production time.



Stitch Count: 5,070



AVAILABLE QUANTITY BREAKS:

DECORATED	24	48	96	144	576	2500+	
BLANK	1*	24	48	96	144	576	2500+

*COLUMN PRICING APPLIES AT THIS QUANTITY. SCAN THE QR CODE FOR THE MOST UP TO DATE PRICING. PLEASE SEE CAPAMERICA.COM FOR ALL ADDITIONAL INFORMATION.

SKN COLOR OPTIONS



USA MADE IN STOCK KNITS

capamerica.com

MADE IN USA
OF IMPORTED YARN

PRICE INCLUDES
10,000
STITCHES

FREE
EMBROIDERY
TAPES

USA MADE CUSTOM ELITE KNITS

Colorful, creative & custom made in the USA. Show off your brand with the best knits available.





ONE-OF-A-KIND & CUSTOM MADE RIGHT HERE IN THE USA!

► Fully custom knit-in design with a maximum of four yarn colors, see page 35 for options ► Choose from one of our Knit-In Mascots for a quick custom-look, see page 34 for options ► Check out our pre-made knit-in designs, see page 33 for options ► Contact customer service for production times

EK9

USA MADE CUSTOM KNIT

ELITE KNIT BEANIE

- acrylic/nylon/spandex blend knit beanie
- maximum of four yarn colors (see page 35 for colors)

\$1.40(A) each to add a standard pom. \$3.90(A) each for embroidery up to 10,000 stitches.

AVAILABLE QUANTITY BREAKS:

DECORATED	24	48	96	144	576	2500+
-----------	----	----	----	-----	-----	-------

SCAN THE QR CODE FOR THE MOST UP TO DATE PRICING. PLEASE SEE CAPAMERICA.COM FOR ALL ADDITIONAL INFORMATION.



Shown with optional embroidery & two-color standard pom
Stitch Count: 9,538



Shown with optional three-color standard pom



EK12

TOP PERFORMER USA MADE CUSTOM KNIT

ELITE KNIT CAP WITH CUFF

- acrylic/nylon/spandex blend knit cap with cuff
- maximum of four yarn colors (see page 35 for colors)

\$1.40(A) each to add a standard pom. \$3.90(A) each for embroidery up to 10,000 stitches.

AVAILABLE QUANTITY BREAKS:

DECORATED	24	48	96	144	576	2500+
-----------	----	----	----	-----	-----	-------

SCAN THE QR CODE FOR THE MOST UP TO DATE PRICING. PLEASE SEE CAPAMERICA.COM FOR ALL ADDITIONAL INFORMATION.



Shown with optional embroidery
Stitch Count: 7,410



Shown with optional embroidery & three-color standard pom
Stitch Count: 12,544



Shown with optional one-color standard pom

USA MADE CUSTOM ELITE KNITS

capamerica.com



EK60

USA MADE CUSTOM KNIT

60 INCH ELITE KNIT SCARF WITH ELITE FRINGE

- ▶ acrylic/nylon/spandex blend knit scarf with elite fringe
- ▶ maximum of four yarn colors (see page 35 for colors)

\$3.90(A) each for embroidery up to 10,000 stitches.



AVAILABLE QUANTITY BREAKS:

DECORATED	24	48	96	144	576	2500+
-----------	----	----	----	-----	-----	-------

SCAN THE QR CODE FOR THE MOST UP TO DATE PRICING. PLEASE SEE CAPAMERICA.COM FOR ALL ADDITIONAL INFORMATION.



— AVAILABLE FRINGE COLORS —



ATHLETIC GOLD

BLACK

HEATHER

TRUE NAVY

TRUE RED

TRUE ROYAL

WHITE



SHOW OFF YOUR SCHOOL PRIDE!

Build the ultimate collection featuring your team mascot on all our Custom Elite Knit styles! Check out our knit-in mascot options on page 34.

USA MADE CUSTOM ELITE KNITS

capamerica.com



NEED HELP GETTING STARTED?

We have created several popular knit-in designs that can help you get your Custom Elite Knit order going. Choose from one of these designs below & combine with your logo or let our talented in-house graphic design team create a one-of-a-kind design for you today!

EKD-01



EKD-02



EKD-03



EKD-04



EKD-05



EKD-06



EKD-07



EKD-08



EKD-09



EKD-10



EKD-11



EKD-12



\$1.40(A) each to add a standard pom. \$3.90(A) each for embroidery up to 10,000 stitches.

USA MADE CUSTOM ELITE KNITS

capamerica.com

MADE IN USA
OF IMPORTED YARN

FREE
EMBROIDERY
TAPES

TEAM KNIT-IN MASCOTS

► Your team mascot will stand out from the rest with the coolest designs available thanks to our revolutionary knitting technology. These mascot designs are only available for **USA Made Custom Elite Knits**.



SM-01



SM-02



SM-03



SM-04



SM-05



SM-06



SM-07



SM-08



SM-09



SM-10



SM-11



SM-12



SM-13



SM-14



SM-15



SM-16



SM-17



SM-18



SM-19



SM-20



SM-21



SM-22



SM-23



SM-24



SM-25



SM-26



SM-27



SM-28



TEAM KNIT-IN MASCOTS

YARN COLOR OPTIONS

► Choose from any of the below yarn color options to customize your **USA Made Custom Elite Knits**. Add \$2.00(A) to the base cost of any Elite Knit that has over 50% of the design in a variegated yarn color.



YARN COLOR OPTIONS



FAUX LEATHER
\$8.00 (A)
 ADDED TO
 EMBROIDERED PRICE

GENUINE LEATHER
\$10.00 (A)
 ADDED TO
 EMBROIDERED PRICE

LASER-ETCHED LEATHER PATCHES

▶ 48 piece minimum order quantity ▶ sewn to attach & available in standard shapes in preset sizes (rectangle, oval, circle, diamond, square, & loop label) ▶ see capamerica.com for additional details ▶ contact customer service for current production time



RECTANGLE - 3" X 1.5"
 CARAMEL WITH CONTRAST ETCHING
 (GENUINE)



OVAL - 3" X 1.5"
 GRAY WITH BLACK ETCHING
 (FAUX)



CIRCLE - 2"
 LIGHT BROWN WITH BLACK ETCHING
 (FAUX)



DIAMOND - 2.25"
 BLACK WITH SILVER ETCHING
 (FAUX)



SQUARE - 1.6"
 BLUE WITH SILVER ETCHING
 (FAUX)



*ONLY AVAILABLE IN 3 OZ LEATHER OPTIONS
 LOOP LABEL
 1" X 1.5"
 BURNT SIENNA WITH BLACK ETCHING
 (FAUX)

FAUX LEATHER COLOR OPTIONS (3 OZ)



BAMBOO WITH BLACK ETCHING



BLACK WITH GOLD ETCHING



BLACK WITH SILVER ETCHING



BLUE WITH SILVER ETCHING



BURNT SIENNA WITH BLACK ETCHING



CORK WITH BROWN ETCHING



DARK BROWN WITH BLACK ETCHING



GRAY WITH BLACK ETCHING



LIGHT BROWN WITH BLACK ETCHING



PINK WITH BLACK ETCHING



RED WITH BLACK ETCHING



RUSTIC WITH GOLD ETCHING



RUSTIC WITH SILVER ETCHING



TEAL WITH BLACK ETCHING



MARBLE WHITE WITH BLACK ETCHING

GENUINE LEATHER COLOR OPTIONS (5-6 OZ)



CARAMEL WITH CONTRAST ETCHING



NATURAL WITH CONTRAST ETCHING



TAUPE WITH CONTRAST ETCHING

\$10.00 (A)
 ADDED TO
 EMBROIDERED PRICE

DEBOSSED LEATHER PATCHES

▶ 96 piece minimum order quantity ▶ sewn to attach & available in standard shapes in preset sizes (rectangle, oval, circle, diamond, & square) ▶ see capamerica.com for additional details ▶ contact customer service for current production time



RECTANGLE - 3" X 1.5"
 BROWN (FAUX)



OVAL - 3" X 1.5"
 SPICE (GENUINE)



CIRCLE - 2"
 MARBLE (FAUX)



DIAMOND - 2.25"
 LIGHT TAN (GENUINE)



SQUARE - 1.6"
 DARK BROWN (GENUINE)

FAUX LEATHER COLOR OPTIONS (3.5 OZ)



MARBLE



BROWN



DARK BROWN



BLACK

GENUINE LEATHER COLOR OPTIONS



LIGHT TAN
 (3.5-4 OZ)



DARK TAN
 (4-4.5 OZ)



MEDIUM BROWN
 (3.5-4 OZ)



DARK BROWN
 (3.5-4 OZ)



SPICE
 (3.5-4 OZ)

DOMESTIC PATCHES & APPLIQUÉS

\$8.00 (A)

ADDED TO
EMBROIDERED PRICE

EMBROIDERED PATCHES

► 48 piece minimum order quantity ► sewn to attach & available in standard shapes (rectangle, oval, circle, diamond, & square) ► maximum width is 3.5 inches, maximum height is determined by cap style ► see capamerica.com for additional details ► contact customer service for current production time



MERROWED BORDER THREAD COLOR OPTIONS

STANDARD COLORS

1965	1890	1922	1931
1987	1846	1832	1859
1878	1892	1911	1945
1952	1888	1831	1928
1817	1991	1880	1938
1819	1992	1833	1884
1838	1896	1826	1855
1839	1895	1955	1858
1981	1893	1951	1836
1986	1977	1971	1999
1993	1827	1861	1974
1994	1852	1866	1882
1948	1932	1924	1870
1816	1828	1980	1973
1815	1934	1959	1957
1921	1944	1970	1956
1990	1967	1900	1903
1984	1842	1848	1918
1915	1829	1851	1812
1917	1874	1988	1886
1835	1953	1989	1840
1919	1843	1845	1841
1854	1966	1847	1800
1998	1844	1879	1801
1983	1943	1985	1802
1997	1830	1996	1803

FLUORESCENT COLORS

1972	1825	1824	1883	1995	1823	1935	1867
1950	1850	1901	1925	1937	1978	1946	1837
	1947	1954	1908	1907	1909	1910	

DOMESTIC PATCHES & APPLIQUÉS

capamerica.com

\$10.00 (A)
ADDED TO
EMBROIDERED PRICE

WOVEN PATCHES

▶ 48 piece minimum order quantity ▶ maximum width is 3.5 inches, maximum height is determined by cap style ▶ sewn to attach & available in standard shapes (rectangle, oval, circle, diamond, square, & loop label) ▶ maximum of 8 colors (not including merrowing) ▶ PMS color matching available ▶ allow for 5 working days for proof ▶ see capamerica.com for additional details ▶ contact customer service for current production time



WOVEN COLOR OPTIONS

*cannot combine colors below with PMS color matching

FLUORESCENT COLORS

--	--	--	--	--	--	--	--

\$12.00 (A)
ADDED TO
EMBROIDERED PRICE

MOLDED RUBBER PATCHES

▶ 48 piece minimum order quantity ▶ maximum width is 3.5 inches, maximum height is determined by cap style ▶ sewn to attach & available in standard shapes (rectangle, oval, circle, diamond, & square) ▶ price includes 4 colors; additional charges apply for designs with more than four colors ▶ allow for 5 working days for proof ▶ see capamerica.com for additional details ▶ contact customer service for current production time



DOMESTIC PATCHES & APPLIQUÉS

\$10.00 ^(A)

ADDED TO
EMBROIDERED PRICE

FLEXSTYLE® APPLIQUÉS

▶ 48 piece minimum order quantity ▶ maximum width is 3.5 inches, maximum height is 2 inches ▶ matte or metallic finishes ▶ sewn to attach & available in standard shapes (rectangle, oval, circle, diamond, & square) ▶ allow for 5 working days for proof ▶ one time mold fee of \$130(A); no charge for reorders ▶ see capamerica.com for additional details ▶ contact customer service for current production time



\$8.00 ^(A)

ADDED TO
EMBROIDERED PRICE

SUBLIMATED PATCHES

▶ 48 piece minimum order quantity ▶ sewn to attach & available in standard shapes in preset sizes (rectangle, square, oval & circle) ▶ see capamerica.com for additional details ▶ contact customer service for current production time



RECTANGLE A
4" X 2"



RECTANGLE B
3.625" X 1.625"



SQUARE
2.5" X 2.5"



CIRCLE
2"



OVAL
3.625" X 1.625"

MERROWED BORDER THREAD COLOR OPTIONS

00 WHITE	15 SPANISH RED	69 TURQUOISE	02 ROYAL
75 SOFT LEMONADE	01 RED	36 SWEET PEA	06 NAVY
20 YELLOW	42 DARK RED	35 LIME	79 IMPERIAL BLUE
17 MEDIUM GOLD	88 BURGUNDY	95 CANADIAN KELLY	T1 CM NAVY
53 AURORA	T2 CM BURGUNDY	09 KELLY GREEN	05 MIDNIGHT
48 VANILLA	24 GARNET	78 GRASSY GREEN	40 LILAC
44 PEACH	74 CARDINAL	27 PADDY GREEN	43 LAVENDER
16 DARK GOLD	55 MAROON	07 OLIVE	47 FUCHSIA
94 UPS YELLOW	21 WINE	10 SPRUCE	61 BLACKBERRY
87 ANTIQUE GOLD	34 CHAMPAGNE	28 SAIL GREEN	64 WILD BERRY
29 METALLIC GOLD	65 TAN	13 ARMY GREEN	39 GRAPE
22 OLD GOLD	23 DARK TAN	68 ICE BLUE	30 METALLIC SILVER
37 COPPER	72 BEIGE	33 POWDER BLUE	85 EAGLE GRAY
51 NEON ORANGE	38 PEBBLE	76 LT BLUE	83 PEARL GRAY
60 TANGERINE	62 SEAL BROWN	74 LAPIS BLUE	25 GRAY
18 MANGO	93 UPS BROWN	08 PEACOCK	19 SILVER
56 LT. ORANGE	12 DARK BROWN	54 SKY BLUE	77 GRAPHITE
63 RUST	66 SAGE GREEN	82 CHEVRON BLUE	11 CHARCOAL
04 LUGGAGE	41 SEA FOAM	86 ACME BLUE	58 SPECIAL GRAY
52 NEON PINK	84 LT. AQUA	14 PACIFIC BLUE	73 BLUE SLATE
57 LT. PINK	49 AQUA	59 WINTER BLUE	73 CMS SLATE
46 PINK	31 TEAL	67 FORD BLUE	26 SMOKEY GRAY
45 ROSE	50 STONE BLUE	32 RRR ROYAL	03 BLACK

DOMESTIC PATCHES & APPLIQUÉS

capamerica.com

CUSTOM 30



Get custom overseas knits faster than ever! The go-to program for express custom headwear just got better with the inclusion of new knitwear options.

- ▶ Minimum order quantity of 288 pieces per style, color, design & size
- ▶ Flat embroidery & knit-in decoration up to four colors
- ▶ Digital proof is ready for your approval in only 10-14 working days
- ▶ Pricing is quoted upon request
- ▶ FOB: 1 USA destination
- ▶ Production times are subject to change due to volatility in global supply chains & logistics



C30K01

CUSTOM 30 KNIT

- ▶ 100% acrylic knit beanie



knit-in design



detail of knit-in design

C30K02

CUSTOM 30 KNIT

- ▶ 100% acrylic knit cap with cuff
- ▶ three-color pom

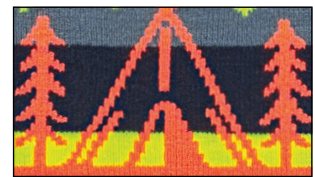


three-color pom

flat embroidery



detail of flat embroidery



detail of knit-in design

CUSTOM 30 KNITS

capamerica.com



C30K03

CUSTOM 30 KNIT

▶ 100% acrylic knit beanie ▶ three-color pom



three-color pom
flat embroidery



detail of flat embroidery



detail of knit-in design

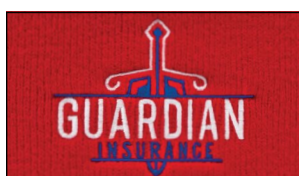
C30K04

CUSTOM 30 KNIT

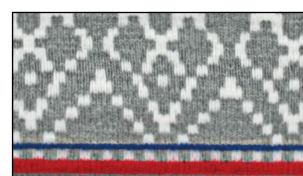
▶ 100% acrylic knit cap with cuff



knit-in design
flat embroidery



detail of flat embroidery



detail of knit-in design

C30K05

CUSTOM 30 KNIT

▶ 100% acrylic knit scarf with fringe



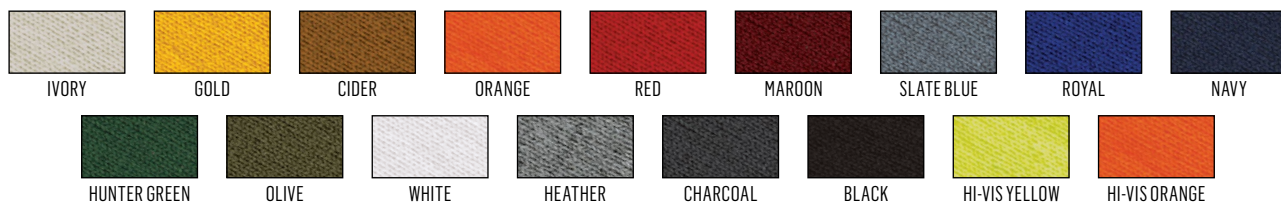
FRONT

BACK



detail of knit-in design

AVAILABLE YARN COLORS



CUSTOM 65



Robust decoration techniques & a vast selection of yarn colors gives you almost unlimited design options to create the perfect knit cap.

- ▶ Minimum order quantity of 288 pieces per style, color, design & size for knits
- ▶ 4-5 weeks for physical samples to approve
- ▶ Pricing is quoted upon request
- ▶ FOB: LA
- ▶ Production times are subject to change due to volatility in global supply chains & logistics



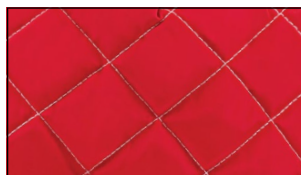
C65K01

CUSTOM 65 KNIT

- ▶ 100% polyester sublimated crown
- ▶ 100% acrylic yarn cuff
- ▶ two-color pom



detail of sewn-on metallic TPU printing on polyester patch



detail of quilted pattern

C65K02

CUSTOM 65 KNIT

- ▶ 100% acrylic knit cap with cuff
- ▶ three-color pom



detail of sewn-on woven patch



detail of contrast cabling

CUSTOM 65 KNITS

capamerica.com



C65K03

CUSTOM 65 KNIT

- ▶ 100% acrylic knit beanie
- ▶ cable knit pattern

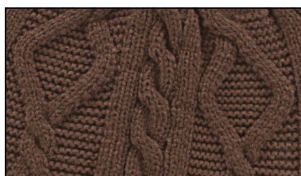


sewn-on laser-etched faux leather patch

cable knit pattern



detail of sewn-on laser-etched faux leather patch



detail of cable knit pattern

C65K04

CUSTOM 65 KNIT

- ▶ 100% acrylic knit cap with cuff
- ▶ cable knit pattern
- ▶ heavy ribbed cuff



embossed TPU patch

cable knit pattern



detail of embossed TPU patch



detail of cable knit pattern

C65K05

CUSTOM 65 KNIT

- ▶ 100% acrylic knit cap with fleece cuff
- ▶ ponytail opening



sewn-on laser-etched faux leather patch

knit-in bands & ribbing

ponytail opening



detail of sewn-on laser-etched faux leather patch

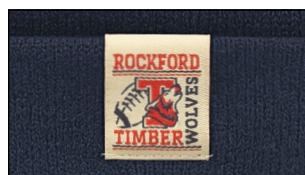


detail of ponytail opening

C65K06

CUSTOM 65 KNIT

- ▶ 100% acrylic knit cap with cuff
- ▶ knit-in design
- ▶ reversible



detail of sewn-on woven loop label



detail of knit-in design

C65K07

CUSTOM 65 KNIT

- ▶ 100% acrylic knit cap with ribbed cuff
- ▶ two-color pom
- ▶ knit-in design



detail of flat embroidery



detail of knit-in design

C65K08

CUSTOM 65 KNIT

- ▶ 100% polyester (sublimation) beanie
- ▶ fleece lined



detail of TPU pressing & fleece lining



detail of sublimation





EK9.....	31	RKF60	21
EK12	31	RKFLAG12	25
EK60.....	32	RKH12	23
iK22	8	RKL12.....	14
iK23.....	6	RKP12	18
iK37.....	10	RKS9.....	17
iK40.....	13	RKS12	17
iK55	6	RKSTAR12	25
iK56.....	9	RKT12	14
iK57.....	10	RKTC9.....	26
iK58.....	13	RKTC12.....	26
iK59.....	13	RKUC9.....	27
iK65.....	9	RKUC12	27
iK70.....	11	RKUSA12	25
iK75.....	11	RKV9.....	22
iK95.....	13	RKV12	22
iK8550.....	5	RKWC9.....	27
iK8552.....	5	RKWC12	27
iK8554.....	4	SKN24.....	29
RK60.....	23	SKN28	29
RKB12	22	TKN24	28
RKD12	18	TKN28	28
RKF12.....	21		

From budget friendly caps & knits to the latest in high-end fashion trends, **let us be the solution to all your headwear needs.**



Visit capamerica.com today to see our full product line & find the perfect cap or knit style to fit your needs.



INDEX BY STYLE

PRODUCTION

Rush orders are accepted only if the production schedule allows. Always contact customer service for current production times.

PRE-PRODUCTION PROOFS ON IN STOCK HEADWEAR

Applicable set up charges such as disc or screen charges will be invoiced when pre-production proof is approved. Proofs for orders will be virtual unless a shipping number is provided.

OVER-RUNS/UNDER-RUNS

Every effort is made to ship exact quantities; however, a 5% over or under variance will be considered complete & billable. A \$40.00(A) charge applies to orders requesting an exact quantity & purchase order must indicate as such.

FABRIC COLOR VARIATIONS

Due to color variations of dye lots, exact color matches of material are not guaranteed. In camouflage patterns, variations may occur in the placement of certain areas of the pattern due to random cutting. Certain distressed materials will have shading variations.

IMPRINT COLORS

Color matches are not guaranteed to be exact, whether PMS colors or color swatches. All materials print differently; therefore, there may be a variation of print colors on orders of different materials or colors. When decorating on camouflage, no guarantees can be made that the pattern will not interfere with decoration (i.e. a branch, leaf or bark may fall behind decoration). Cap America is not responsible for fabric bleeding which may occur when imprinting a light color on a dark fabric. It is not recommended to place a white imprint on a red or black cap because the imprint may have a pink or gray hue. Distressed materials in all colors have a tendency to bleed into light colored embroidery threads & prints.

LAUNDERING

Do not launder. Do not dry clean.

ORDER PROCESSING

All prices & materials/fabrics are subject to change without notice.

ORDERS

Orders must be made in written form with purchase order number. No phone orders are accepted. Cap America is not responsible for duplication of orders that do not indicate confirmation. Ship dates cannot be scheduled until clarification of order has been completed (if needed), artwork has been approved & additional charges (if any) have been accepted.

CANCELLATIONS

No cancellations will be accepted unless approved by Cap America & submitted in written form. Once an order has been entered into production it cannot be cancelled.

CHANGES/CORRECTIONS

Changes to an order already in process may be made depending on the status of the order, providing the customer agrees to compensate for all costs (if any) & agrees to additional production time (if necessary).

LESS THAN MINIMUM

Minimum quantity of 15 pieces on Cap America Premium Line Styles. Minimum quantity of 24 pieces on all other in stock & domestic styles. Custom Overseas Knits have a minimum order size of 288 pieces per style, color, design & size.

SIZING

Knits are also one size fits most. Due to the nature of the knitting process, some variations in product size may occur. Custom overseas knits have a 288 piece per size order minimum.

ARTWORK

All imprints, logos or trademarks displayed in this catalog are for illustration purposes only. These items are not available for sale unless the owner of that product issues specific permission. Color photographs in this catalog are approximate & may or may not be a true color representation of the actual product. To see actual fabric color, please order a sample.

Submit vector art with clear, concise instructions. Art that is not vector art may require additional charges & delay production. Artwork charges are \$70.00(A) per hour. Exact duplication of logos & type styles cannot be guaranteed unless vector art to size specifications is submitted. Unless otherwise requested, Cap America will size art to best fit the decoration area. Artwork submitted via e-mail must meet the following specifications: files should be in vector format, preferably Adobe Illustrator (AI), if any images are used, they should be no less than 300 dpi & placed in an Encapsulated Postscript (EPS) file & be included in e-mail, convert all fonts to paths. JPEG, TIF, PDF, BMP & CDR files can be used, preferably in hi-resolution (300 dpi), but vector art is preferred. Send artwork (as attachments) to capart@capamerica.com.

CUSTOMER SUPPLIED EMBROIDERY DISCS

Cap America can accept customer supplied discs in most formats including Tajima, Melco, Barudan, Wilcom, Pulse & DOS. If disc must be edited for any reason, charges will apply. Pre-production proof of customer-supplied disc is required.

COPYRIGHT/TRADEMARK LAWS

When artwork is submitted by or on behalf of a Purchaser for production of an order, Cap America assumes that the artwork submitted is in full compliance with the laws governing copyright, trademark, and other intellectual property rights of any third party. Notwithstanding any provision in any purchase order, including any integration clause or other disclaimer, by submitting artwork in connection with an order, a Purchaser shall be deemed to have agreed to indemnify, defend and hold harmless Cap America from any claim, damages or costs based on any alleged breach of any copyright, trademark or other intellectual property right of a third party arising from or related to Cap America's use of such artwork in connection with such order. When artwork is submitted by or on behalf of a Purchaser, this provision shall be deemed both a separate agreement formed upon the submission of such artwork (and not superseded by any integration clause in a purchase order) and also a provision that is integrated into and made a part of each purchase order submitted by a Purchaser.

PRIVATE LABELS

Domestically produced (sewn-in) printed labels are available for \$.60(A) each. Red, blue & black ink colors are available. Woven labels produced Overseas are also available. For use in all in stock orders, these labels can be sewn in for \$.60(A) each. Minimum order quantity is 3,000 labels for \$400(A). Contact customer service for more information.

SHIPPING

If no specific instructions are given, Cap America will ship via FedEx or UPS. All orders are FOB MO or CA. Cap America is not responsible for the delay of any freight carrier or for any damages occurring during transport.

DROP SHIPMENTS

Cap America will ship to one location per order. Additional drop shipments are \$6.50(A) per location plus applicable freight charges.

PACKAGING

Please note that when air shipments are requested (such as FedEx Priority or Standard Overnight, FedEx 2 Day, UPS Red, Blue, etc.) dimensional rates will apply. Contact customer service for estimated shipping charges, or use our freight tool available at www.capamerica.com.

RETURNS

Returns will not be accepted without a Return Authorization number provided by Cap America. All claims must be made in writing no later than 10 working days from order shipment. Inspect all shipments for accuracy immediately. Cap America is not liable for decoration quality when done by other suppliers on our blank caps.

GENERAL INFORMATION

capamerica.com

SAMPLES & SAMPLE KITS

Cap America offers several different sample kits to assist you in your sales efforts. We also have an ample supply of random samples available. Random samples may include optional items. If the specific color or style is not available, substitutions will be made. Sample kits & random samples normally ship within one to two business days of your request. For additional information concerning samples, see capamerica.com.

SPEC SAMPLES OF IN STOCK HEADWEAR

Spec samples will be provided at no charge on a limited basis if shipper number is provided.

RANDOM SAMPLES OF IN STOCK HEADWEAR

Random samples up to 12 pieces will be provided at no charge if shipper number is supplied.

EXTRA STITCHES

Extra stitches on any embroidery location add \$.80(A) each running charge per thousand stitches or fraction thereof over allowable stitch count.

METALLIC THREAD

Add \$.90(A) each. Gold & silver mylar available.

DISC EDIT GUIDELINES

Maximum enlargement or reduction 15% of original size. NOTE: Some reductions or enlargements may affect the quality of the design & require a new embroidery disc.

DUPLICATE DISCS/E-MAIL

\$20.00(A) each.

EMBROIDERY ON KNITS

All in stock knit headwear includes one location of embroidery up to 10,000 stitches of flat embroidery. FREE embroidery tape on Premium Line with orders of 15 pieces or more. FREE embroidery tape on all remaining product categories with order of 24 pieces or more.

EMBROIDERY AREAS

Please see www.capamerica.com for available embroidery areas.

YARN

Custom USA made knits are made with 100% acrylic yarn. Available colors are located on page 35. Choose up to four yarn colors when designing a custom USA made knit. Due to color variations of dye lots, exact color matches of yarn are not guaranteed.

VARIEGATED YARN

Add \$2.00(A) to the base cost of any custom made knit that has over 50% of the design in a variegated yarn color.

POMS

\$1.40(A) each to add a standard pom. \$5.00(A) each to add a faux fur pom. Faux fur poms are available in brown or black. \$1.40(A) each to remove a pom from any import in stock knit. Poms cannot be removed from the RKB12, RKF12, RKH12, or RKL12. Adding or removing poms will increase production time.

SECONDARY LOCATIONS ON KNITS

\$3.90(A) each for embroidery up to 10,000 stitches.

PATCHES & APPLIQUÉS ON KNITS

Regardless of available application process, all patches & appliqué are sewn to attach on all knits. Pricing varies on decoration type.

VIRTUAL PROOF

Only a virtual proof is available on 24 piece custom made knit orders. Physical sampling available on order quantities above 24 pieces.

**GENERAL INFORMATION**

capamerica.com



SCAN THE QR CODE TO VISIT
CAPAMERICA.COM

STAY CONNECTED. FOLLOW
US ON **SOCIAL MEDIA**



▷ LIKE
▷ SHARE
▷ COMMENT

WWW.FACEBOOK.COM/CAPAMERICA85



CONNECT
WITH OTHER
PROFESSIONALS.

WWW.LINKEDIN.COM/COMPANY/CAPAMERICA85



CAPTURE &
SHARE THE
MOMENT.

WWW.INSTAGRAM.COM/CAPAMERICA85