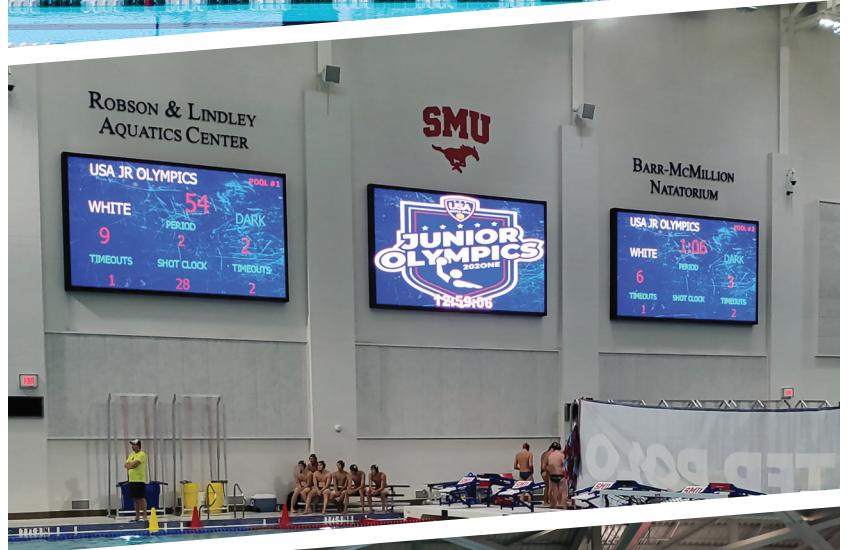


**Colorado
TIME SYSTEMS®**
A PLAYCORE Company

SWIM TIMING AND VIDEO SCOREBOARDS



www.coloradotime.com

Make Your Time Count

Commitment

Since our inception in 1972, Colorado Time Systems has maintained a steadfast commitment to provide communities with the tools they need to train, time, and score team sports to promote overall health and wellness. We fully support all the athletes, coaches, families, and facilities that participate in these sports and the healthy competition that ensues. These teams are an integral part of the community that build a sense of belonging and promote both mental and physical wellness at all skill or competitive levels.

Competition encourages us to venture into an unknown space. We train hard, but we don't know until the finish how well that training has paid off. Every event is a chance for self-discovery as we learn how to physically and mentally tackle events and go further. Whether we compete alone or as a team, we make valuable connections that promote well-being.

We are honored to serve thousand of facilities worldwide in their pursuit of helping athletes recognize their true potential.

Industry Knowledge

Colorado Time Systems is synonymous with precision and accuracy in aquatic timing and scoring. Our product engineers and designers have over 50 years combined experience. Safety is always top of mind when designing and manufacturing the products for your facility. You can rest assured that the products you receive have gone through stringent safety testing and certification.

Project Management

With the purchase of a timing, scoring, and display solution; a comprehensive project management team is assigned to assist you in achieving a seamless installation and unparalleled support once the project has been completed. A Project Manager oversees your installation from contract to completion. The Project Manager is your point of contact through installation and will interface with you, the architect, and the construction company. Members of the project management team include:

- Sales Management
- Engineering Staff
- Project Manager
- Installation Supervisor

Customer Support

- Phone and email support
- On-site service
- On-site installation
- Maintenance videos

Colorado Time Systems is the Official Scoring System of USA Diving, the Official Scoring and Timing System of USA Water Polo, the Official Timing and Scoring Partner of United States Masters Swimming, the Official Timing System of the College Swimming Coaches Association of America, Sponsor of Association of Aquatic Professionals, and the Official Timing Partner of Federacion Mexicana de Natacion, and the Brazilian Swimming Federation.

Our products are proudly manufactured in Loveland, CO USA



Table of Contents

● Timing Diagrams

Basic Swim Timing.....	4
Basic Touchpad Timing.....	5
Championship Timing.....	6

● Timing Solutions

Gen7 Serial Timing.....	8
Gen7 Legacy Timing.....	14
In/On-Deck Solutions.....	16
Dolphin Wireless Timing.....	18

● Start Systems

Infinity Start System.....	20
Championship Elite Start System.....	21

● Touchpads..... 23

● Relay Judging..... 26

● Diving..... 29

● Artistic Swimming..... 31

● Water Polo..... 33

● Pace/Shot Clocks..... 39

● Training Tools..... 43

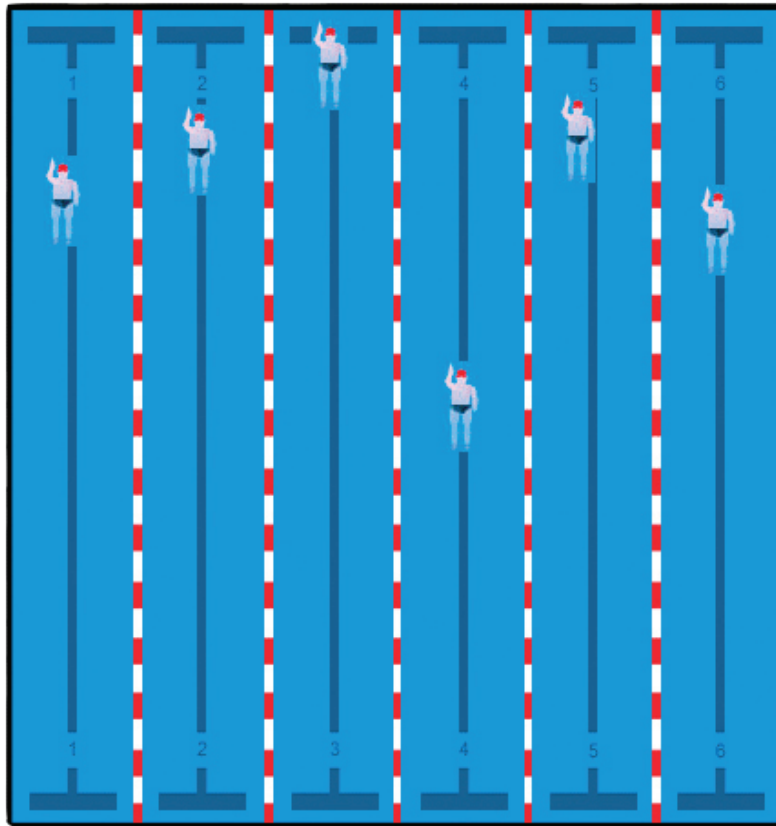
● Numeric Scoreboards..... 47

● Video Boards..... 54

Basic Swim Timing

This is an ideal solution for facilities that are currently using stopwatches to time meets. Use of the Dolphin Wireless Stopwatch Timing System saves time and improves the accuracy of recorded times. Touchpads and additional timing equipment can be added as your budget allows.

Dolphin wireless stopwatches



EVENT	HEAT	TIME
1	5	10:03.90
2	4	9:46.63
3	2	9:37.46
4	1	9:37.08
5	3	9:38.52
6	6	10:13.63

Numeric scoreboards



Results computer with wireless base unit



Dolphin wireless start unit for synchronized start

"Speaking as a Meet Referee for 25 years, I absolutely love the Dolphin System. After working High School and USA Swim meets where the results are available shortly after the meet ends to check over, summer league was always dreaded due to the long wait for scorers to input the times from the lane timer sheets. Our league (MSSL) requires that the meet referee and coaches sign the final score sheets. I have had to wait up to an hour for the results to be finalized. So, speaking from an officials standpoint, I love the Dolphin System." -- Donna Witt, MSSL President

Basic Touchpad Timing

Touchpad timing automates the timing and scoring of swimming competition. Touchpads record the finish time and relay times back to the timing system. Final times are displayed on the LED numeric scoreboard.

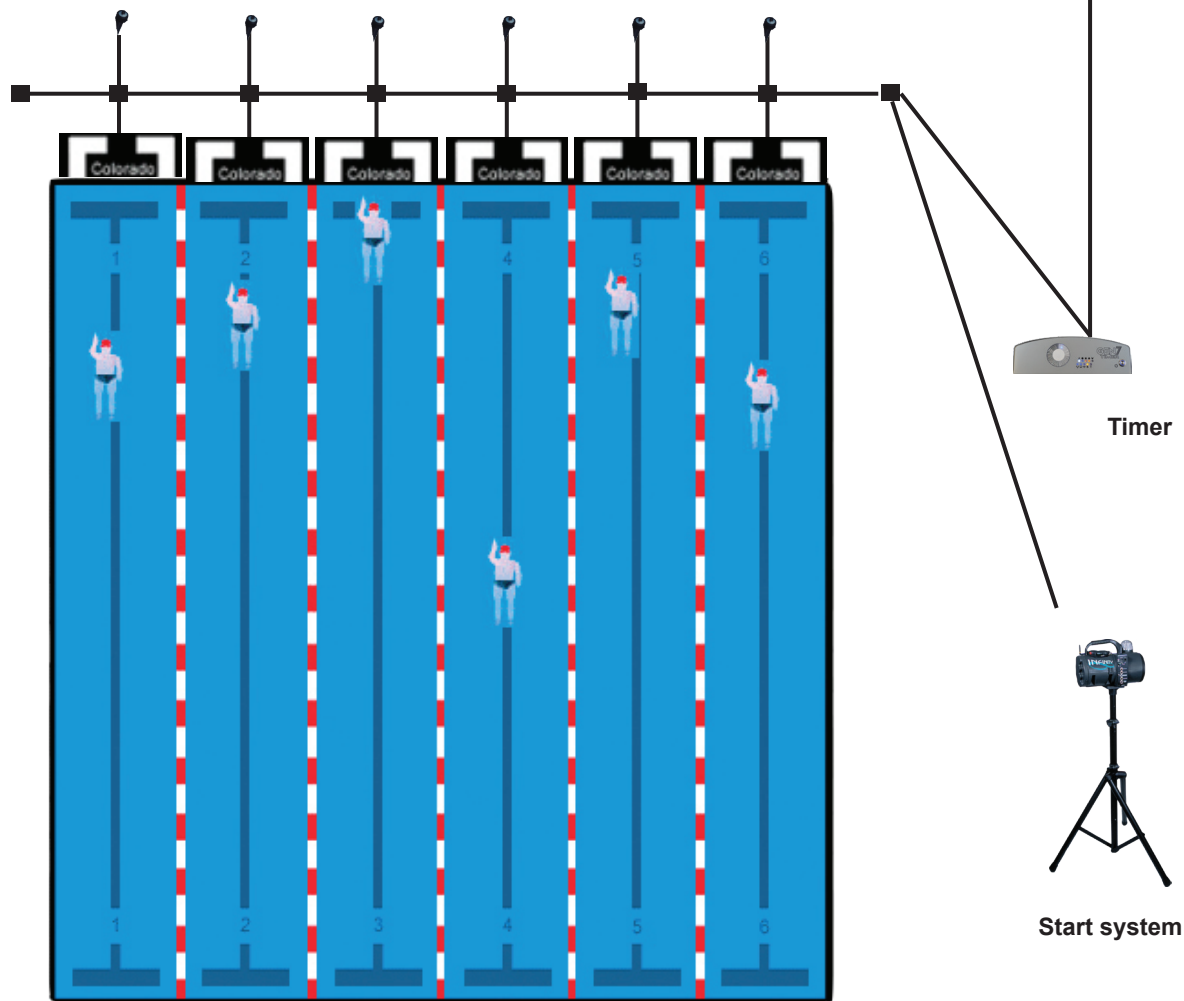


EVENT 12		HEAT 2	
COLORADO TIME SYSTEMS			
LN	PL	TIME	
1	5	10:03.90	
2	4	9:46.63	
3	2	9:37.46	
4	1	9:37.08	
5	3	9:38.52	
6	6	10:13.63	



Pushbuttons, touchpads, cable harness

Numeric or video scoreboards (wired or wireless connectivity)



Championship Timing

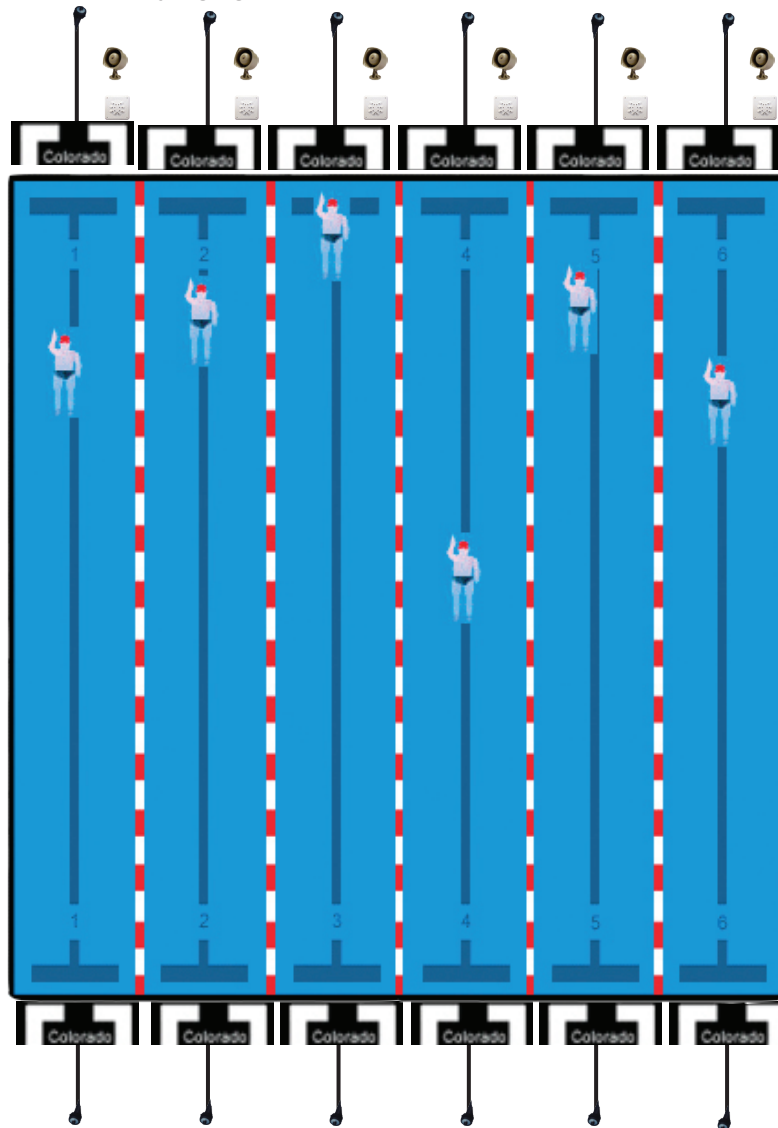
A complete in-deck timing system provides a clean deck and features titanium deckplates, individual lane speakers, and backstroke start devices.



EVENT 12		HEAT 2	
COLORADO TIME SYSTEMS			
LN	PL	TIME	
1	5	10:0390	
2	4	9:4663	
3	2	9:3746	
4	1	9:3708	
5	3	9:3852	
6	6	10:1363	



Pushbuttons, touchpads, titanium deckplates, lane speakers, relay judging platforms, backstroke start devices



Numeric or video scoreboards (wired or wireless connectivity)

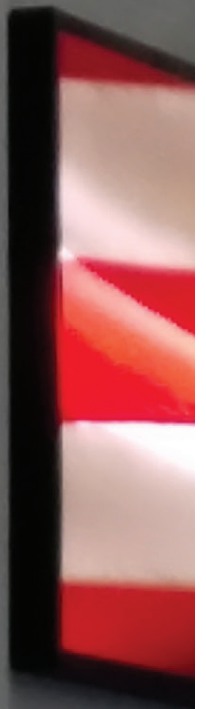


Start system



Timer, Results and DisplayLink+ computers

ON & LINDLEY
ATICS CENTER



BARR-M
NATA

TIMING SOLUTIONS



Serial Timing

Colorado Time Systems is synonymous with precision and accuracy in aquatic timing and scoring. Our Gen7 technology exceeds current standards by offering you cutting edge technology with unrivaled precision and an all new software-driven experience to run your meets flawlessly.

The Gen7 platform provides you long-lasting technology that will save you time and money. The software interface puts intuitive control of all levels of competition at your fingertips. This software combined with the distributed intelligence of our proprietary serial bus communication system gives you the flexibility to run your meets your way.

What's new:

- Intuitive software interface
- Keyboard shortcuts for most frequently used features
- Flexible user interface options
- Integrated 2.4GHz wireless to scoreboards
- Accurate, easy, and efficient pre-meet set up
- Simple, robust bulkhead connectivity
- Facility network connectivity
- Minimal maintenance required
- Race finish safeguard
- Advanced diagnostics
- Intelligent bus system
- Wet-pluggable titanium connectors
- Reduced cabling, allowing facilities to utilize convenient 1.5" conduit
- Dynamic course layout
- Simultaneous race support
- Timing for up to 20 lanes
- Wall or floor plate connectivity for timer, start system, deck clocks, portable scoreboards, and bulkhead



U.S. patent number 10,137,535

Gen7 incorporates the latest technology with all of the key features that you have come to expect from your Colorado Time Systems' timing console including:

- Enhanced split handling
- Start reaction display
- Automatic lane arming
- Intelligent button time handling; backup time adjustment per governing body rules
- Interface to 3rd party meet management software
- Indicate disqualified, no show, and exhibition swimmers
- User selectable resolution; timing to 1/100th or 1/1000th of a second
- Basic pace clock functionality
- Cumulative/subtractive splits
- Expanded lane capabilities
- Manual arm/finish arm
- Relay judging
- Declare start/finish end
- Scoreboard cycling

Serial Timing

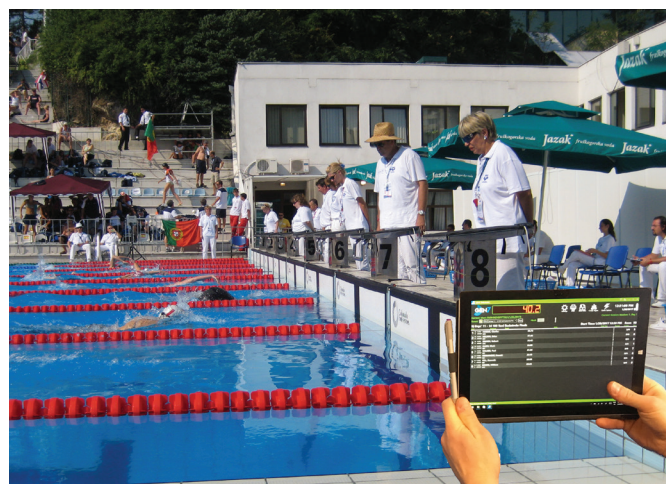
Intuitive software interface:

- The Gen7 timer features a modern Windows user interface and is touchscreen friendly
- Graphical user interface allows for dynamic course layouts. Layouts can be changed on the timer without moving any cables or equipment; eliminating the need to designate different wallplates for different courses
- Turn off unused inputs and unused lanes, thereby saving power
- Simultaneous race support allows you to run two or more courses at the same time using separate Windows PCs or tablets and just one timer
- Expanded printer support; use any printer connected or networked with your Windows PC or tablet
- Automatically searches for software updates each time it is used.

Flexible user interface options:

A Windows 10 (or higher) laptop or tablet is the primary user interface with connectivity to the timer via Ethernet.

The Gen7 timer can be placed at the timing table for a meet, or left in a secure office space and connect to the timing system via an office wallplate.



Accurate, easy, and efficient pre-meet set up:

- Color coded and keyed cable connections
- Volunteer friendly
- Recognition of saved course configurations
- Quick confirmation that all equipment is in the correct location and plugged in

Serial Timing

Simple, robust bulkhead connectivity:

Gen7 sets a remarkable new standard for connecting your bulkhead to the timing system. The wet-pluggable floor plates for both pool side and in the bulkhead mean you no longer need to attempt the challenging chore of keeping bulkhead connections dry and corrosion free.

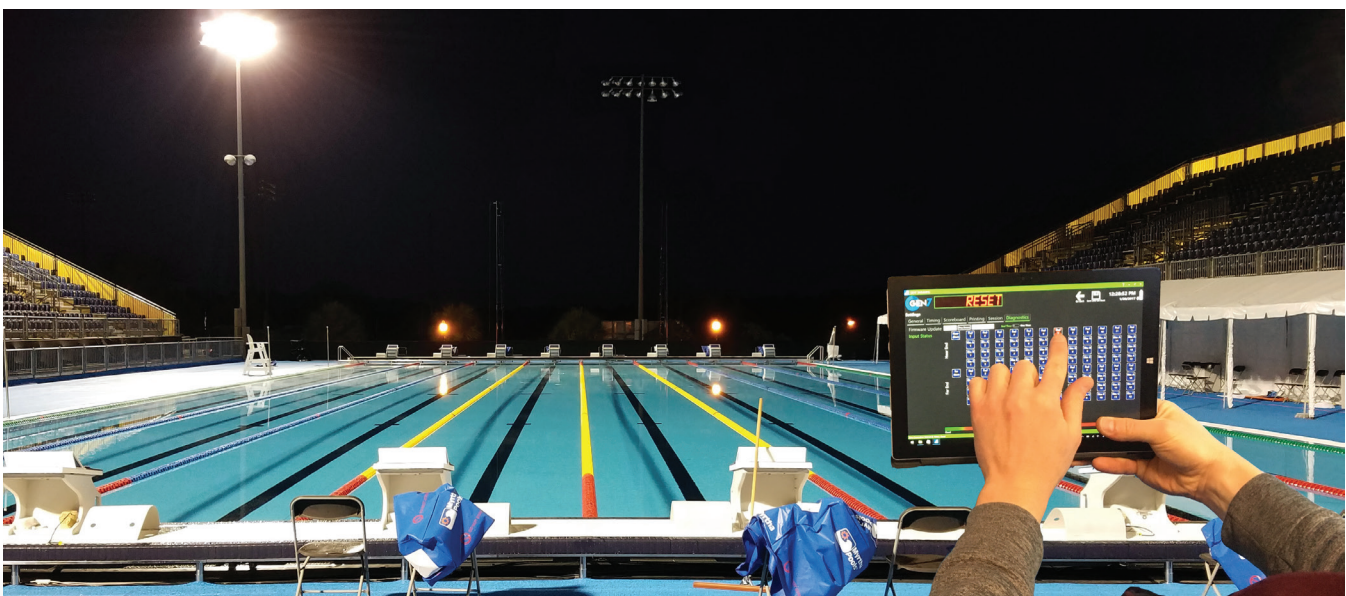
Race finish safeguard:

All timing data is logged and saved on the Gen7 timer. Any issues with the user interface (laptop or tablet) are recoverable. The timer will continue running and will finish a race without the user interface

Advanced diagnostics:

The advanced diagnostic features of the Gen7 timer save you time and money by allowing you to be proactive with equipment maintenance.

- System will alert you if components are connected in the wrong place or become disconnected, including bulkheads, start system, touchpads, pushbuttons, relay judging platforms, speedlights, and speakers
- Integrated pre-meet diagnostic screen to check system set up and health, eliminating the need to set up a meet in the timer to run test races
- Be proactive with equipment maintenance: discover possible corroding connections throughout the timing system, and mitigate effects of corrosion until the component can be repaired or replaced



Serial Timing

The Gen7 infrastructure is unparalleled. The innovative, intelligent bus communication system allows you the flexibility to design the best location(s) to connect your timer, start system, deck clocks, portable scoreboards, and bulkheads; and eliminate wall plates in your facility. It also reduces cabling to allow your facility to utilize convenient 1.5" conduit.

Connect hubs:

- Each type of connect hub is uniquely keyed and color coded to ensure that each component is connected in the right place
- Perform checks twice a second to see if there is a connection at its location
- Feature corrosion-free titanium connections
- Minimal maintenance; simply remove any debris that gets in the connect hub. Each hub comes with a screw-on cap to keep debris out. No chemical cleaning. Floor plates are power washable.
- Connectors are wet-pluggable, purging the water out of the deck plate or connect plate while making a superior connection
- Timer, start system, scoreboard, and bulkhead connect hubs can be mounted in deck or in wallplates



Timer Connect



Start Connect



Scoreboard Connect



Bulkhead Connect

Each connect hub has built-in intelligence to test and report input connections, as well as any compromised wire terminations or corrosion.

Each connect hub (on-deck, in-deck, or in the wall) features on-board memory that records pertinent data for troubleshooting.

Unprecedented 5-year warranty

Serial Timing

Intelligent titanium deckplates

(US Patent No. 8,602,815)

This rugged in-deck solution features:

Titanium jacks

- Corrosion free from pool water chemicals like chlorines and bromines

Unique domed topography

- Protects banana plugs
- Peaks and valleys let the water flow off, dramatically limiting corrosion through electrolysis
- Better signal, less corrosion
- Smooth edges
- Will not yellow in the sun

Integrated speedlight connection

- No speedlight harness necessary
- Robust plug combining speedlight and relay judging signal

Diagnostic intelligence

Built-in intelligence to test and report input connections, as well as any compromised wire terminations or corrosion.

Unprecedented 5-year warranty



Colorado Time Systems is the Official Timing and Scoring Partner of U.S. Masters Swimming, College Swimming Coaches Association of America, Brazilian Swimming Federation, and the Mexican Swimming Federation.

Gen7 is fully compliant with World Aquatics, USA Swimming, NCAA, National Federation of High Schools, U.S. Masters Swimming, and more.

Serial Timing

Wallplates feature LED indicators that provide system status at a glance.



Legacy Timing

The Gen7 legacy timer is designed to work with your existing CTS timing components and display boards, allowing you to meet your current needs and reap the benefits of the powerful Gen7 user interface. It is a direct replacement for any existing CTS Timing Console used for swimming.



What's new:

- Intuitive software interface
- Integrated 2.4GHz wireless to scoreboards
- Race finish safeguard
- Flexible user interface options
- Facility network connectivity
- Rich diagnostics

The Gen7 legacy timer is compatible with both in- and on-deck systems up to 12 lanes and allows you to fully utilize your existing CTS equipment with ease and accuracy.

From our inception, Colorado Time systems has set the standard for timing innovation and fairness in aquatic competition. Today, we are the leading provider of aquatic sports timing and scoring systems with over 20,000 installations in more than 120 countries. Our equipment has been used in competition in every continent in the world.

Legacy Timing

Intuitive software interface:

The Gen7 legacy timer features a modern Windows user interface and is touchscreen friendly.

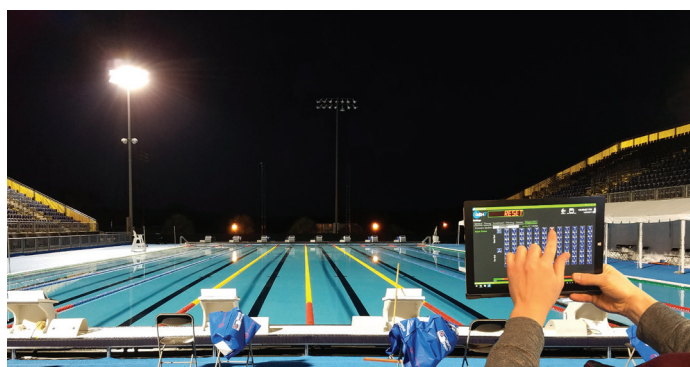
Flexible user interface options:

A Windows laptop or tablet is the primary user interface, with Ethernet connectivity to the timer.

In- and on-deck facilities can place the timer at the timing table for a meet. In-deck facilities have the option to place the timer at the timing table, or in a secure office space and connect to the timing system via an office wallplate.

Race finish safeguard:

All timing data is logged and saved on the Gen7 timer. Any issues with the user interface (laptop or tablet) are recoverable. The timer will continue running and will finish a race without the user interface



Rich diagnostics:

- Integrated pre-meet diagnostic screen to check system set up and health, eliminating the need to set up a meet in the timer to run test races
- Proactive equipment maintenance: discover possible corroding connections throughout the timing system, and mitigate effects of corrosion until the component can be repaired or replaced

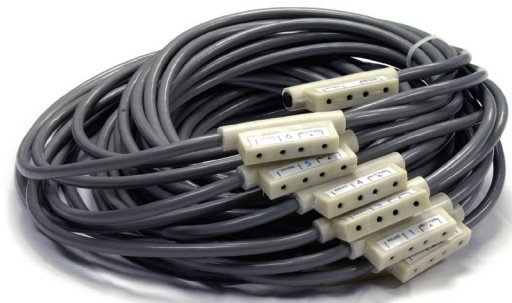
Legacy On-Deck



Cable harnesses are designed to be used in a pool environment without the need for additional protection from the environment.

With multiple options available, we have a harness to fit your facility needs.

Cable Harnesses & Accessories	
Part #	Description
CH41-6	6-lane touchpad, pushbutton primary harness
CH41-6-3	6-lane pushbutton backup harness
CH41-8	8-lane touchpad, pushbutton primary harness
CH41-8-3	8-lane pushbutton backup harness
CH41-10	10-lane touchpad, pushbutton primary harness
CH41-10-3	10-lane pushbutton backup harness
CH41-12	12-lane touchpad, pushbutton primary harness
CHE-41P-xx	Extension for primary CH41 (available in 75- or 200-foot and 50m)
CHE-41-xx	Extension for primary & backup CH41 (available in 25- or 75- feet and 50m)



Legacy In-Deck

Titanium deckplates

(US Patent No. 8,602,815)

This rugged in-deck solution features:

Titanium jacks

- Corrosion free from pool water chemicals like chlorines and bromines

Unique domed topography

- Protects banana plugs
- Peaks and valleys let the water flow off, dramatically limiting corrosion through electrolysis
- Better signal, less corrosion
- Smooth edges
- Will not yellow in the sun

Integrated speedlight connection

- No speedlight harness necessary
- Robust plug combining speedlight and relay judging signal

Unprecedented 5-year warranty



Dolphin Wireless Timing

Dolphin is a proven wireless timing system with a fully integrated Hy-Tek Meet Management interface. Dolphin provides wireless, synchronized, stopwatch-style timing for swimming competitions. It significantly reduces the amount of time and effort required to run a meet and manage data. By eliminating manual transcription and input, the system has dramatically improved accuracy in comparison to manual stopwatches.

Three modes of operation:

Electronic Synchronized Start/Manual Stop

Connect the starter unit to any CTS electronic start system. All watches will start timing with the start system signal. Each watch stops when the lane timer stops it.

Manual Synchronized Start/Manual Stop

The official with the starter unit presses the START/STOP key. All watches start timing from this signal. Each watch stops when the lane timer stops it.

Manual Start/Manual Stop

This mode is used for collecting backup times at major events, and is compliant with all swimming ruling bodies' (World Aquatics, NCAA, USS, NFHS, YMCA) requirements for backup timing. Lane timers start and stop the watches independently for a fully manual system.

In all three modes, the times are wirelessly transmitted and saved for immediate access by Meet Manager. The starter unit is used to reset the system before the next race.



Each Dolphin system includes:

- Handheld wireless stopwatches for each lane (the system supports up to 3 lane timers per lane, and up to 10 lanes)
- Starter unit
- Base unit, which connects via USB cable to your computer running Hy-Tek Meet Manager with the Dolphin module

Specifications

- Wireless: 16 channels, spread spectrum, 2.4GHz
- Battery: Standard 9V provides 40+ hours of operation
- Stopwatch dimensions (L x W x D): 2.75" x 4.5" x 1" (7cm x 11.4cm x 2.5cm)
- Weight: 4.8 oz (165 grams)
- RoHS compliant, CE compliant
- U.S. Patent Nos: 7,821,876 and 8,085,623

Configurations

WTS-D1061: 6-lane, 1 watch per lane

WTS-D1062: 6-lane, 2 watches per lane

WTS-D1063: 6-lane, 3 watches per lane

WTS-D1081: 8-lane, 1 watch per lane

WTS-D1082: 8-lane, 2 watches per lane

WTS-D1083: 8-lane, 3 watches per lane

WTS-D1101: 10-lane, 1 watch per lane

WTS-D1102: 10-lane, 2 watches per lane

WTS-D1103: 10-lane, 3 watches per lane

R-1004-0506: Spare stopwatch



Infinity Start System

The Infinity Start System makes an excellent entry-level start system, and its lower cost makes it a great choice for smaller pools and recreation centers. It is an easy-to-use portable start system and limited public address system.

Microphone

The Infinity Start System includes a wired microphone.

Built-in 360° strobe

Flashes with the start signal. This gives timers and officials a reliable start reference, and provides a visual cue to athletes that are deaf or hard of hearing. Additional strobe lights may be added.

Battery power

The Infinity Start System runs on an internal, rechargeable gel-cell battery. The Infinity will not operate while charging. An optional secondary gel-cell battery and charger are available.

Limited public address system

The Infinity Start System can serve as a limited public address system, allowing you to make announcements during practice and competition.



Infinity Start System & Accessories	
Part #	Description
INF-SSM	Infinity Start System, 110/120V
INF-SSMF	Infinity Start System, 220/240V
TR-3	Tripod for Infinity or Championship Start System
R-INF-SPxxx	Infinity external 40-watt speaker (available in lengths of 125- or 200-feet)
R-INF-SJxxx	Infinity start jumper cable (available in lengths of 25-, 50-, 75-, 100-ft or 50m)
M-xx	Microphone (available with 25-, 50-, 100-, 150-, or 200 foot cable)
EXTSTROBE	Infinity external strobe
SMK-1	Kit to mount speaker on backstroke pole
BP-3	Spare battery and external charger

Championship Elite Start

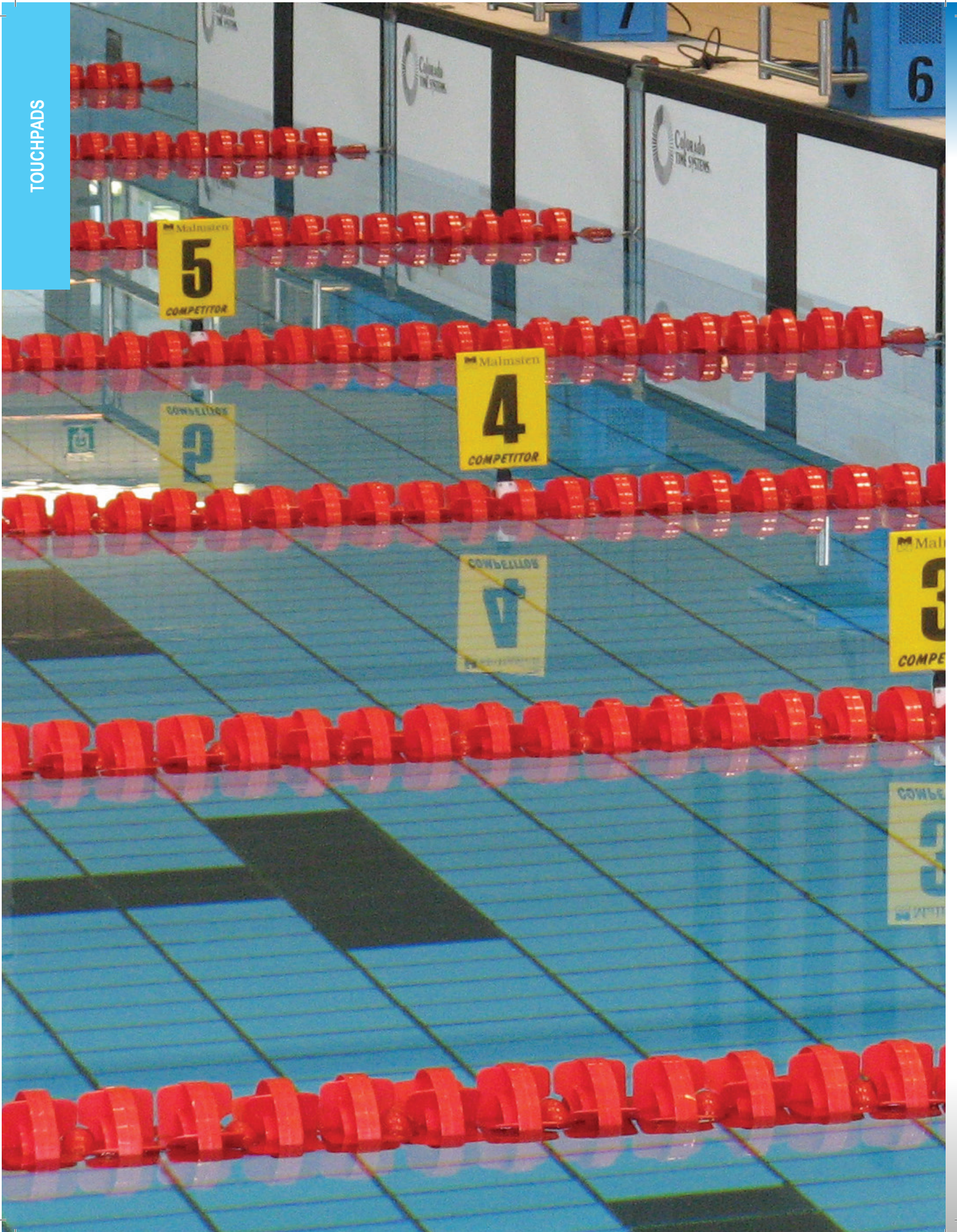
The Championship Elite Start System is a rugged and flexible start system designed for elite competition and training. The system allows you to drive up to 12 Relay Judging Platforms with Speedlights, up to 13 External Visual Indicators, and 20 auxiliary block speakers or 2 underwater speakers.

Key Features:

- **Bright external 360° strobe** that flashes with start signal tone. Additional strobe lights (EVIs) for other locations are available.
- **External visual indicators (EVIs)** that function either as a strobe or lane indicator and feature variable intensity settings for indoor or outdoor use. EVIs level the playing field by giving all athletes a visual cue to the start.
- **Visual start signaling (VSS)** provides a clear visual start sequence for all athletes behind the block, on the block, and signals “Take Your Marks.” It uses the multi-color LEDs of the EVIs and was designed for athletes who are deaf or hard of hearing, but is useful for all athletes.
- **Automated training mode** with a variable interval between starts.
- **Alternate start tones and custom “Take Your Marks” messages.**



Championship Elite Start System & Accessories	
Part #	Description
SSE	Championship Elite Start System with wired microphone
M2-xx	Microphone (available with 15-, 25-, 50- 100-, 150- or 200- foot cable)
CMP-WPxx	Cable, Elite to wallplate, start signal, speaker, speedlight, strobe (available in 25- and 50- foot)
R-SP-xxx	External 40-watt speaker (available with 125- or 200- foot cable)
SP-UND	Underwater speaker for Championship Start System
R-SP-6-45	External lane speaker, 6 watt, 45 ohm with 26' cable
SMK-1	Kit to mount speaker to backstroke pole
EVI/EVI-FP-M/R-015-747	External visual indicators/EVI round beam mount for starting blocks/EVI connection cable
TR-3	Tripod for Infinity and Championship Start Systems
START-FPM-2	Start system flagpole mount



Touchpads

Standard Surface and AquaGrip® Touchpads



CTS AquaGrip® touchpads feature the patented AquaGrip® texture over the foundation of a tough plastic backbone. The AquaGrip® touchpads combine the best starting and turning surface available with the proven design that all Colorado Time Systems touchpads have used for over four decades.

The all-plastic construction is tough and durable, yet the textured, non-skid surface is gentle on swimmers' hands and feet. The solid quarter inch plastic backbone, molded one-piece connectors, and non-corrosive finish provide long-lasting reliability.

Our touchpads are lighter in weight than other touchpads, making it easier for one person to insert and remove the touchpads for a meet, and avoiding any major damage if accidentally dropped on the pool deck or the bottom of the pool.

Dependable, internally sealed switches record even the lightest swimmers' touch on the fully active face of all CTS touchpads, and along the top edge of gutter-mounted pads. You get an accurate finish every time with no "dead spots."

Touchpads

Our touchpads can be left in the water for the entire duration of a multi-day meet, so you will not have to get the pool re-certified each day of the meet.

CTS touchpads can be custom made for any lane width and/or made with notches to accommodate various bulkheads or end walls to provide the largest finishing surface.

Each facility is provided with custom touchpad brackets for your specific gutter. This avoids your pads shifting left or right while in the water.

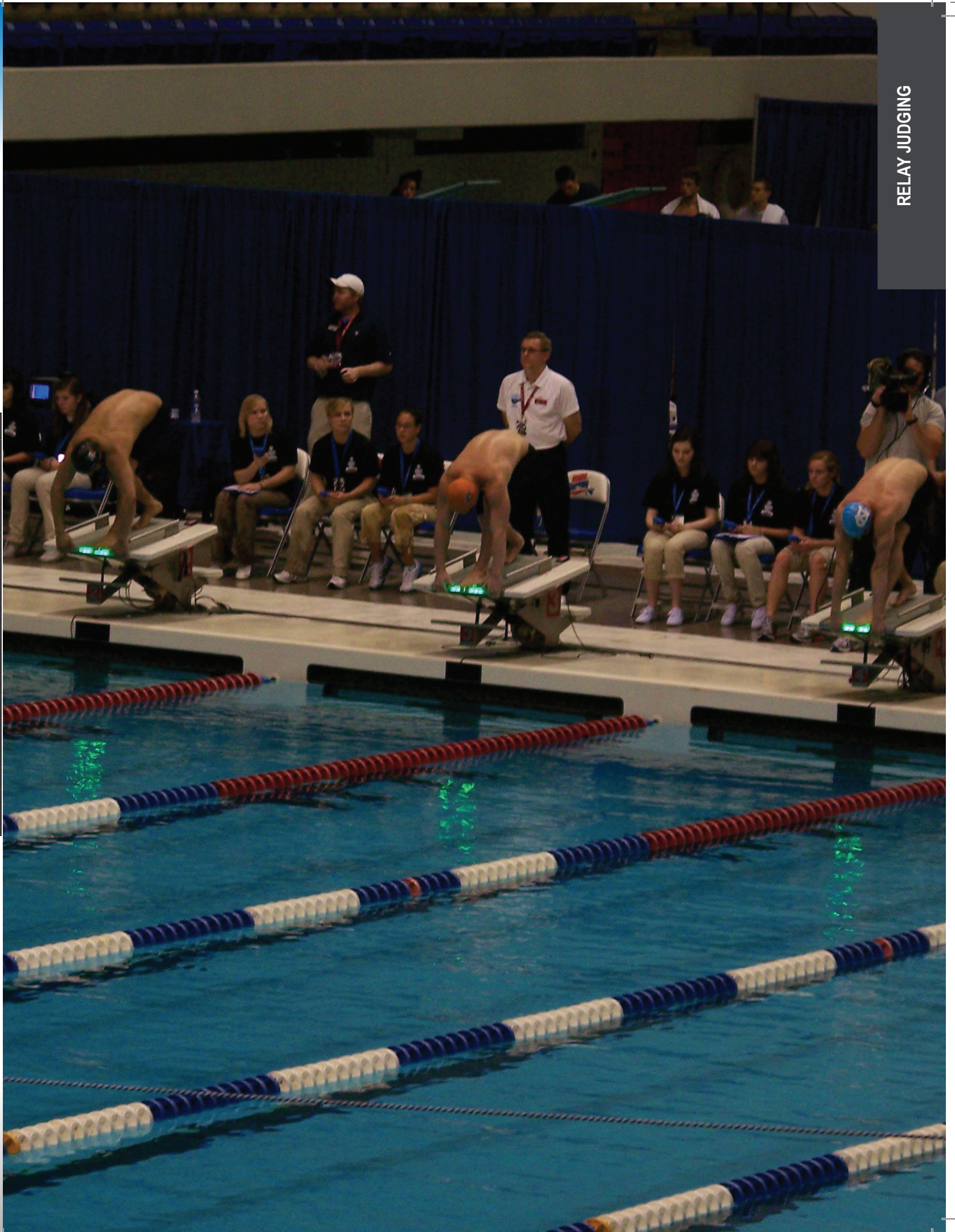
Touchpads & Accessories	
Part #	Description
TP-60F	60" x 24" Standard flatwall touchpad
TP-60G	60" x 22" AquaGrip® gutterhung touchpad
TP-60GF	60" x 24" AquaGrip® flatwall touchpad
TP-78F	78" x 24" Standard flatwall touchpad
TP-78G	78" x 22" AquaGrip® gutterhung touchpad
TP-78GF	78" x 24" AquaGrip® flatwall touchpad
TP-90	90" x 22" Standard gutterhung touchpad
TP-90G	90" x 22" AquaGrip® gutterhung touchpad
TP-96	96" x 22" Standard gutterhung touchpad
TP-96G	96" x 22" AquaGrip® gutterhung touchpad
TP-188.5	188.5cm x 90cm gutterhung touchpad
TP-188.5F	188.5cm x 90cm flatwall touchpad
TP-195	195cm x 90cm gutterhung touchpad
TP-195F	195cm x 90cm flatwall touchpad
TP-240	240cm x 90cm gutterhung touchpad
TP-240F	240cm x 90cm flatwall touchpad

Touchpad Caddy

Your Colorado Time Systems touchpads are precision electronic instruments, and can be protected with a touchpad caddy that provides safe storage and a convenient way to transport touchpads to and from the pool deck. Each caddy is delivered partially assembled and can accommodate up to 10 touchpads.

P/N: CAD-TPxx

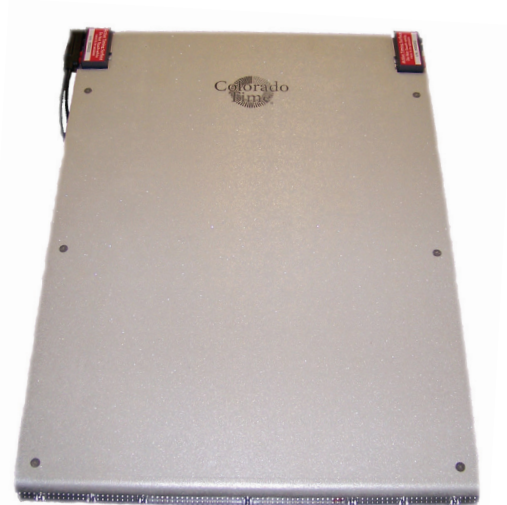




Relay Judging

Features:

- Light weight
- Custom logos available
- Suitable for all athletes, at all levels
- Dual connector block offers flexibility and convenience
- Deckside start indicator on connector block flashes simultaneously with the start system and speedlights for a visual cue to backup timers
- Simplified connection from RJP to cable harness or deck plate - a single connector runs parallel to the RJP to reduce the risk of accidental disconnect
- Highest rated non-slip surface on the market
- Universal mounting system compatible with most manufacturer's starting blocks.



Relay judging:

Colorado Time Systems' Relay Judging Platform technology is the most accurate way to judge relay exchanges. The RJP automatically compares the incoming swimmers' finish on the touchpad with the departure of the swimmer leaving the starting platform. The RJP will record the necessary information to judge a relay exchange to 1/100th of a second.

Start reaction:

On every start, the RJP senses when the swimmer leaves the block and compares the time to the start impulse from the start system with 1/100th of a second accuracy.

Speedlight technology:

LEDs across the front of the RJP flash simultaneously with the start tone and strobe light. All athletes benefit from the visual signal, which they can easily see without altering their race-ready posture. Backstrokers benefit from the visual start signal, just inches from their eyes.

Relay Judging

Deckside start indicator:

An LED is integrated into the connector block on the deck side. The LED flashes simultaneously with the start signal and speedlights to give the deck side backup timers a visual cue, and increase the accuracy of backup times.

The Championship Start System is required to activate the speedlights and deckside start indicator.

Elegantly engineered:

Both the top and leading edge of the rjp are sensitive to the swimmer's departure. Extensive research and elegant engineering allow the RJP to decipher between weight shifts and when a swimmer actually leaves the platform.

Specifications:

Part number	Dimensions (W x L)	Weight
RJPLD-2020	20" x 20" (50.8cm x 50.8cm)	8.4 lbs (3.8kg)
RJPLD-2024	20" x 24" (50.8cm x 60.9cm)	9.9 lbs (4.5kg)
RJPLD-2420	24" x 20" (60.9cm x 50.8cm)	9.9 lbs (4.5kg)
RJPLD-2432	24" x 34" (60.9cm x 81.3cm)	15.2 lbs (6.3kg)
RJPLD-OSB12	20" x 30" (50.8cm x 76.2cm)	10.0 lbs (4.5kg)

An RJP mounted on a starting block adds .3 in (.76cm) to the height above water
U.S. patent no: D464,699

RJP Caddy

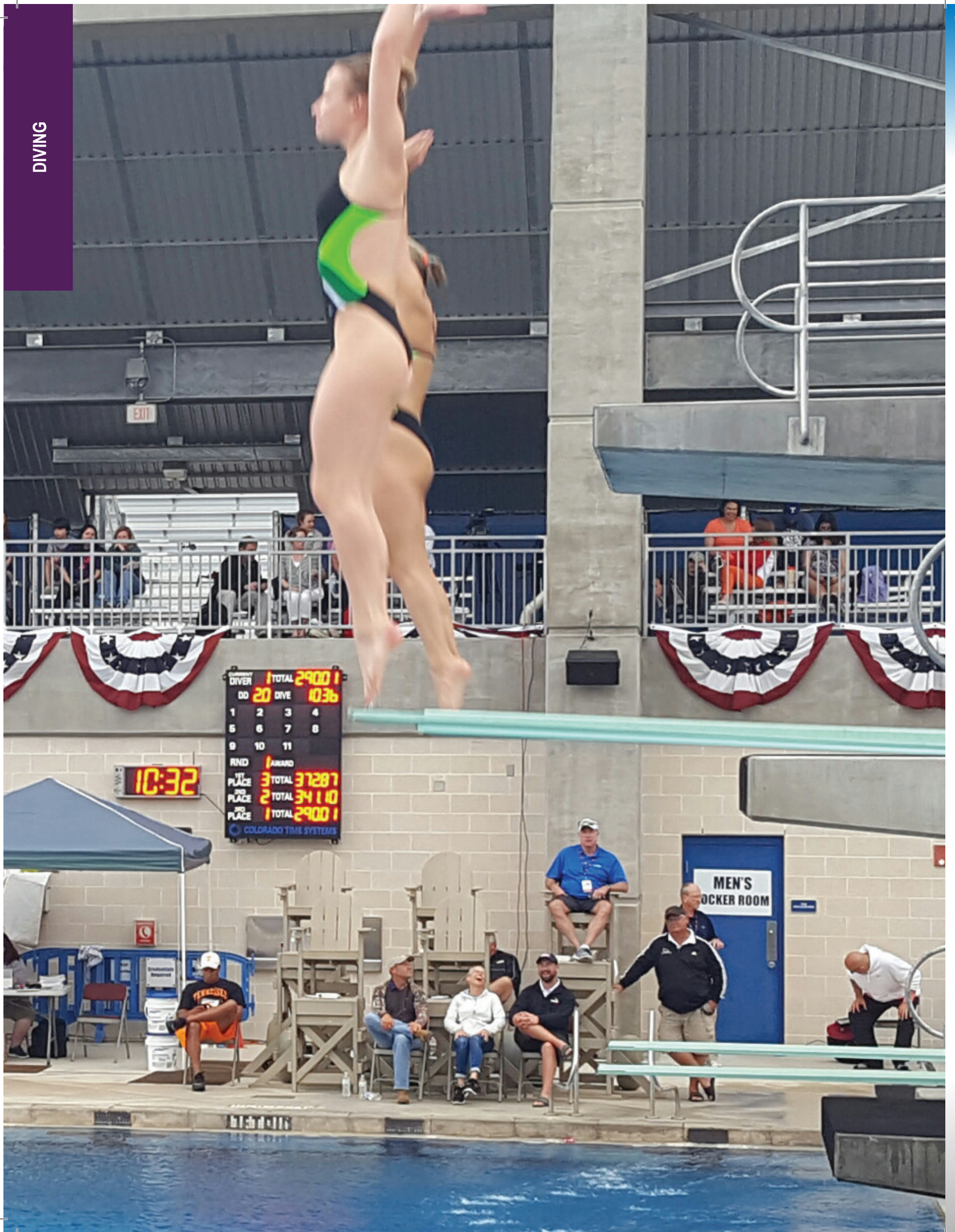
Protect your Relay Judging Platforms with the RJP Caddy. Caddies are available to hold RJP's that are either 20" wide (up to 24" long) or 24" wide (up to 32" long).

Design features:

- Optional hooks can be installed to store RJP cables
- Lightweight, sturdy aluminum construction

P/N: CAD-RJPL-x





OVERALL DIVER	1	TOTAL	2900	1
DD	20	DIVE	1036	
1	2	3	4	
5	6	7	8	
9	10	11		
RND	1	AWARD		
1 ST PLACE	3	TOTAL	37287	
2 ND PLACE	2	TOTAL	34110	
3 RD PLACE	1	TOTAL	2900	1
COLORADO TIME SYSTEMS				

10:32

MEN'S LOCKER ROOM

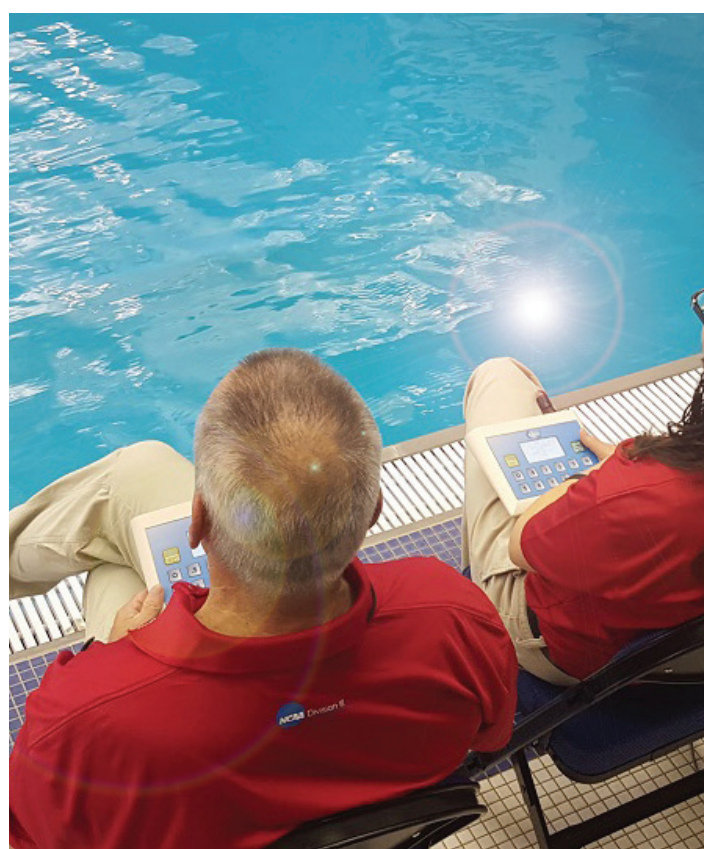
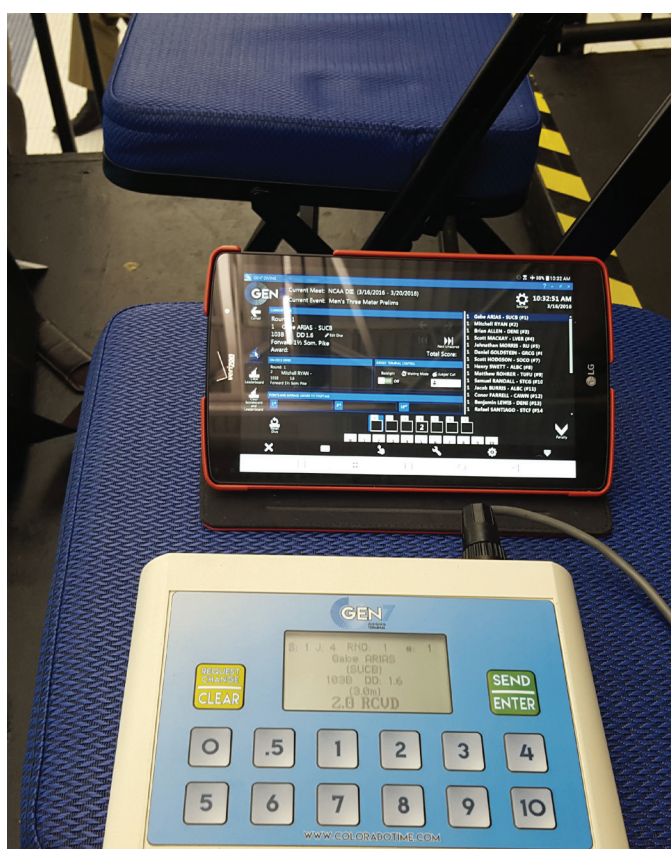
Diving

Colorado Time Systems proudly offers multiple solutions for scoring diving meets. All options are compatible with any of our LED numeric or matrix scoreboards and displays.

Colorado Time Systems is the Official Scoring System of 

Gen7 Wired Diving

Gen7 Diving is an exciting way to run your diving meets without a timing console. This software-based, wired solution complies with all World Aquatics and USA Diving regulations, and interfaces with most meet management programs.



Gen7 wired judging terminals display diver's name, team, country, judging terminal#, dive and degree of difficulty. Each backlit LCD display is suitable for use both indoors and outdoors with sunlight readability. Each judge has the ability to request a change to a submitted score.

ARTISTIC SWIMMING



Artistic Swimming

Meet Management Software

Colorado Time Systems' Artistic Swimming Meet Management Program makes running a meet easy. Scoring data can be entered manually, or you can use either wireless or wired judging terminals to transmit judging data back to your computer.

Gen7 Wired Judging

Judging terminals display routine name, team, country, and judging terminal #. Each backlit LCD display is suitable for use both indoors and outdoors with sunlight readability.



WATER POLO



Water Polo

Colorado Time Systems is pleased to offer a variety of water polo scoring solutions, allowing you to select the right solution for your facility. Whether you are looking for a wired or wireless solution, we have the scoring system to suit your needs.

Controllers

Wireless controllers: The 2.4GHz integrated wireless tabletop and handheld controllers are designed for use with most of our numeric scoreboard solutions. Each features an operating distance up to 1,000 ft., buttons with tactile dome feedback, and a large transfective screen that is easily readable in all environments from darkness to bright sunlight.



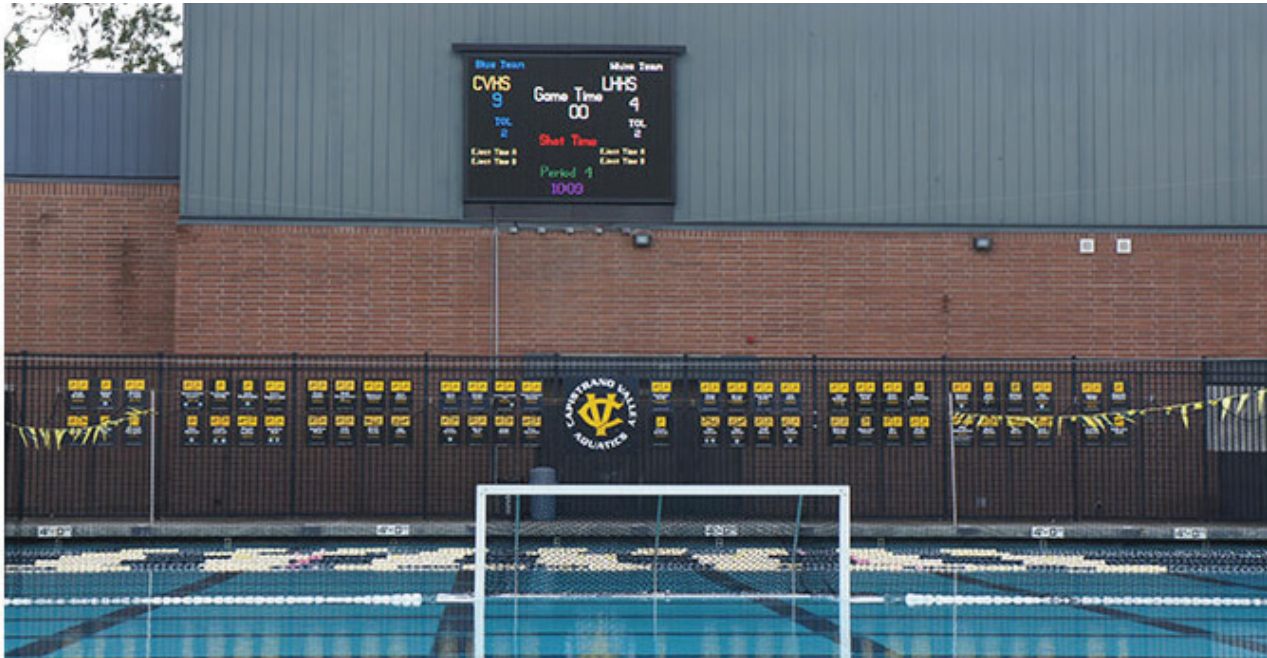
Timing console: With the water polo software, your System 6 can control the shot clocks, game time, three penalty times per team, team scores, and horn using our numeric or LED video displays. The operator can also edit the preset times and set the time of day. Wireless adapters are available for a completely wireless solution.

The System 6 and WTTC are compliant with World Aquatics WP20, Amendment #1.



Water Polo

LED Video Displays



- Indoor or outdoor with pixel pitches as tight as 4mm
- Modular design: Easily customized for your facility
- Conformal coated; Protects against even the harshest of environments
- Indoor SMD technology
- Video and camera ready
- DisplayLink+ software
- Versatile display controller
- Optional wireless capabilities with wireless scoreboard adapter
- Designed for use with the wireless tabletop controller or System 6 timing console
- Displays scoring, animations, and video

Water Polo

LED-R Scoreboards

- Optional wireless capabilities with wireless scoreboard adapter
- Rugged powder-coated aluminum enclosure
- Conformal coated digits and circuit boards to protect against corrosion
- High visibility 10" LED digits (amber or red)
- Designed for wireless use with the tabletop controller or wireless/wired use with the System 6 timing console
- Optional external horn
- Can be used with deck clocks or pace clocks (shot clocks)
- Digits can be reconfigured for other aquatic sports
- Caddy or permanent mount



OTTER Scoreboards

- Integrated 2.4GHz wireless featuring 12 independent channels and 16 independent networks per channel that provide reliable communication for up to 192 games at a facility
- Rugged powder-coated aluminum enclosure
- Conformal coated digits and circuit boards to protect against corrosion
- High visibility 5" red LED digits
- Designed for wireless use with the tabletop controller or System 6 timing console
- Optional external horn
- Can be used with deck clocks (shot/game time)
- Caddy or permanent mount



Water Polo

Portable/Tabletop Scoreboard

- Integrated 2.4GHz wireless featuring 12 independent channels and 16 independent networks per channel that provide reliable communication for up to 192 games at a facility
- Rugged powder-coated aluminum enclosure
- Conformal coated digits and circuit boards to protect against corrosion
- High visibility 5" LED digits
- Designed for wireless use with the tabletop or handheld controller
- Wireless or wired System 6 timing console interface
- Optional external horn
- Can be used with deck clocks



Water Polo

Deck Clock

- Integrated 2.4GHz wireless featuring 12 independent channels and 16 independent networks per channel that provide reliable communication for up to 192 games at a facility
- Ruggedized polyethylene enclosure is water and sun resistant
- Conformal coated digits and circuit boards to protect against corrosion
- High visibility 10" LED digits display shot time and 5" LED digits display game time
- Designed for use with the wireless tabletop controller, wireless handheld controller, or System 6 timing console
- Integrated horn performs separate shot and game tones
- Use as a pace/time of day clock when not in competition



Pace Clock Pro

- Rugged powder-coated aluminum enclosure
- Conformal coated digits and circuit boards to protect against corrosion
- High visibility 10" LED digits (red or amber)
- Internal horn
- Designed for use with the System 6 timing console
- Use as a pace clock when not in competition
- Portable or permanent installation





Slim Pace Clocks



Slim pace clocks offer an elegant pacing and time of day solution for your facility. The slim profile (only 2.8" deep) is perfect for displaying time of day and pacing with minimum extension from the wall of your facility. A straightforward and elegant display, the large 13" digits are easily visible from a distance.

Slim pace clocks are available with 4- or 6-LED digits (P/N: SP-1400 / SP-1600). The 4-digit clock displays hours and minutes or minutes and seconds. The 6-digit clock displays hours, minutes, and seconds. If multiple pace clocks are used in a facility, they will wirelessly synchronize the time of day automatically.

Features:

- High visibility red or amber LED digits
- Indoor or outdoor use
- Rugged powder-coated aluminum enclosures
- Add a segment timer to wireless program sets for workouts.
- 2.4GHz integrated wireless
- Conformal coated digits and circuit boards to protect against corrosion
- Variable intensity settings

Add a segment timer and program your workouts to display on the slim pace clocks.

Colorado Time Systems is the Official Timing and Scoring Partner of United States Masters Swimming



Pace/Shot Clocks

Deck Clock

Excellent deck side display solution, cleverly designed to prevent tipping. The deck clock features a ruggedized polyethylene enclosure that is both water and sun resistant, and completely corrosion free. The built-in handle allows for easy carrying from point to point.

- Can be used as game/shot clock for water polo, can be set to pace using time of day
- Variable intensity settings allow comfortable visibility in a variety of environments and times of day or night
- Multiple clocks will automatically synchronize



Basic Pace Clock

- Wired or wireless
- Portable version can be used as water polo shot clock
- 10" red LED digits with two intensity settings
- AC power or battery
- Tripod or wall mount

PC-Standard - Basic Pace Clock with handle and legs. No battery, A/C only

PCW-Standard - Wireless basic pace clock with handle and legs. No battery, A/C only

PC-Portable - Basic pace clock with internal horn, battery, handle and legs.



Pace Clock Pro

The Pace Clock Pro was designed with you and your athletes in mind, with 15 training modes to fine-tune skills and create customized workouts. The PC-PRO can be used either with or without a timer or controller.

The PC-PRO can be used as a water polo shot clock when connected to your timing console. Additional clocks can be added to display game time, time out time, and team scores.



Display modes:

When connected to a System 5 or 6 timing console, the PC-PRO can display:

- Swimming: lane times, event/heat
- Training: lane times
- Diving: dive number & position, current round / current diver
- Water polo: game clock, shot clock, time out clock, team scores
- Synchronized swimming: award

Training modes:

Many modes require additional equipment for timing input. Contact your Sales Consultant for details, and help in designing your ideal training system.

- Lap counter
- Simple pace clock
- Pace clock with cumulative splits
- Pace clock with lap splits
- Relay exchanges
- Start reaction
- Turn speed
- Breakout time
- Reaction and breakout time
- Single lane lap timer (1, 2, 3, 4, or multiple laps)
- Midrace timer

PC-PRO-x: Pace clock pro with internal horn, battery, handle, and legs

PCW-PRO-x: Wireless pace clock pro with internal horn, battery, handle, and legs

Pace clock pros are available with either red or amber digits



Training Tools

Backstroke Start Device with Automatic Retraction

Train with the backstroke start device (U.S. Patent No. 10,245,524) to get the edge on your competition. The backstroke start device adapts to most starting blocks and is World Aquatics, USA Swimming, and U.S. Masters Swimming compliant.

- Anti-slip foot wedge
- Easy to set up
- Automatically retracts up and out of the water

Australian Patent No. 2013382748



Photos courtesy of Laura Hamel/U.S. Masters Swimming

Training Tools

Pace Clock Pro

Features 15 training modes to fine-tune skills and create customized workouts.

- Lap counter
- Simple pace clock
- Pace clock with cumulative splits
- Pace clock with lap splits
- Relay exchanges
- Start reaction
- Turn speed
- Breakout time
- Reaction and breakout time
- Single lane lap timer
- Mid-race timer



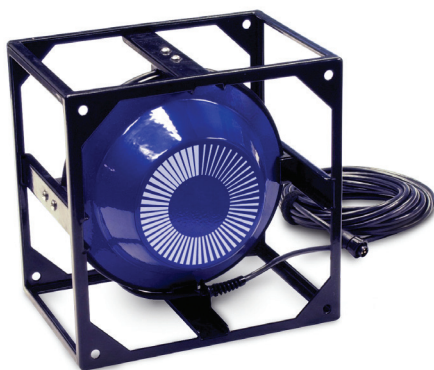
Deck Clock

- Pace in time of day (hours, minutes, and seconds) without any controller
- Multiple clocks will automatically synchronize in pace mode
- Variable intensity settings allow comfortable visibility in a variety of environments and times of day or night
- Designed to prevent tipping
- Ruggedized polyethylene enclosure that is water and sun resistant
- Built in handle for easy transport from point to point

Training Tools

Relay Judging Platform with Speedlights

- Highest rated non-slip surface on the market
- Judge relay exchanges
- Judge start reaction times
- Speedlights (LEDs) across the front flash simultaneously with the start tone and strobe light
- Suitable for all athletes, at all levels
- Universal mounting system compatible with most manufacturer's starting blocks



Underwater Speaker

- Coach your athletes mid-pool
- Talk to swimmers under water
- Broadcast recall tones
- Clear the pool
- SCUBA instruction

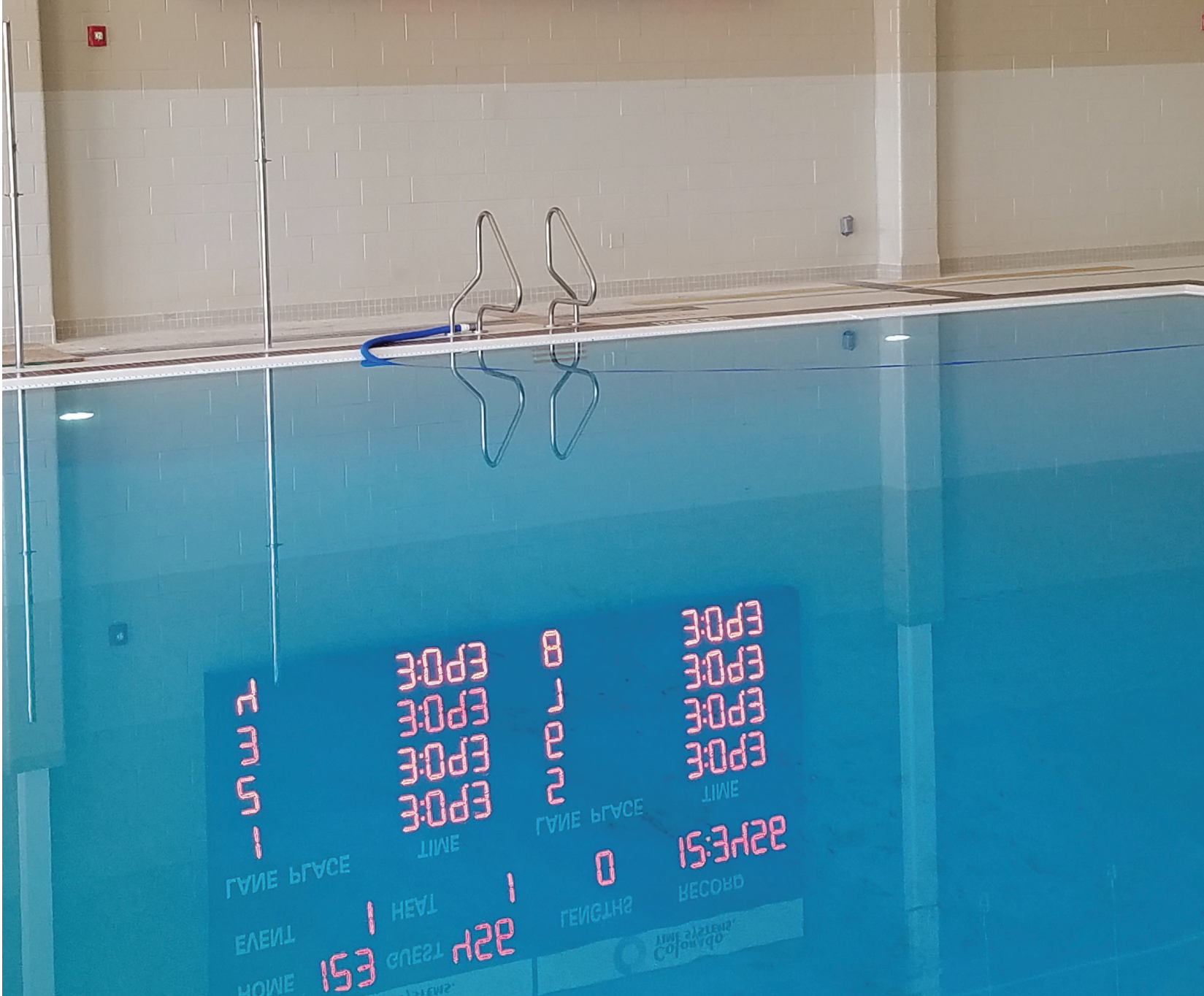
NUMERIC SCOREBOARDS

Colorado TIME SYSTEMS. Colorado TIME SYSTEMS.

HOME 123 GUEST 456 LENGTHS 0 RECORD 12:3456

EVENT 1 HEAT 1

LANE	PLACE	TIME	LANE	PLACE	TIME
1		3:093	5		3:093
2		3:093	6		3:093
3		3:093	7		3:093
4		3:093	8		3:093



Numeric Scoreboards

LED-R

Colorado Time Systems' LED-R numeric scoreboards are a cost-effective way to provide information, involve the audience, and showcase the athletes for all aquatic sports. Modules can be used individually or combined in multiple-module scoreboard designs.

Your display will enhance your program and provide excellent visibility. Designed specifically for the aquatic environment, your scoreboard's high quality construction resists corrosion in any environment, giving you years of trouble-free service.

Panels can be added to the numeric scoreboard for sponsor advertising or facility / team name.

LED-R scoreboards can be set to display information for swimming, diving, water polo, and artistic swimming by simply moving the digits. The scoreboards may also serve as time-of-day and pace clocks.

LED-R scoreboards are available in red or amber (standard), or custom color for an additional fee. Standard digits are 10" high.

LED-R modules can be configured vertically or horizontally with a wide variety of mounting options. Caddies are also available for up to 5 vertical scoreboard modules, to provide a portable solution.



Numeric Scoreboards

LED-REX

You can easily upgrade your light-reflective scoreboard to the newer LED-R numeric scoreboard with our retro-fit solution. Contact a Sales Consultant today for more information on this option.



6-Digit Scoreboards

A scoreboard that incorporates the best of both worlds, signage and digits in one enclosure. These 6-digit scoreboards are ideal for those who are space- and cost-conscious, but don't want to sacrifice information provided by traditional single line scoreboards. The sleek design allows you to display home and guest scores OR current event and heat without the need for additional signage. If you still want more, a dual purpose 6-digit scoreboard is available that allows you to show both scores and event/heat on the SAME LINE of scoreboard. Available with red or amber digits.

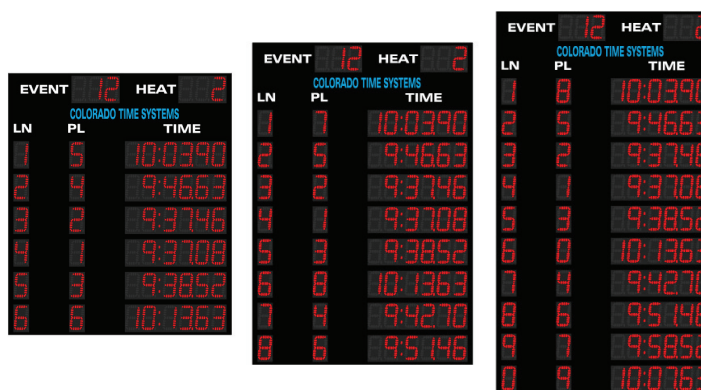
These scoreboards are designed to be used in conjunction with the 10" LED-R numeric scoreboards, and stack beautifully with each other and other lines of scoreboard.



Numeric Scoreboards

Otter Swimming Boards

- 2.4GHz wireless scoring for 6-, 8-, or 10-lanes
- Indoor or outdoor use
- High visibility 5" LED digits
- Conformal coated digits and circuit board to protect against corrosion
- Brightness adjusts automatically to ambient light
- Integrated internal antennas for reliable communication with System 6 wireless adapter, Gen7 Timer, and Dolphin
- Permanent wall mount or caddy



Otter Swimming Scoreboards and Accessories	
Part #	Description
MS-0149	Six lane + event/heat swimming scoreboard
MS-0150	Eight lane + event/heat swimming scoreboard
MS-0151	Ten lane + event/heat swimming scoreboard
MS-0155	Six lane + event/heat swimming scoreboard in same enclosure as an 8-lane, with space for signage above the data
MS-0156	Six lane + event/heat swimming scoreboard in same enclosure as a 10-lane, with space for signage above and below the data
MS-0157	Eight lane + event/heat swimming scoreboard in same enclosure as a 10-lane, with space for signage above the data
CAD-MINI-4	Single sided caddy for six lane swimming scoreboard
CAD-MINI-4D	Double sided caddy for six lane swimming scoreboard
CAD-MINI-5	Single sided caddy for eight lane swimming scoreboard
CAD-MINI-5D	Double sided caddy for eight lane swimming scoreboard

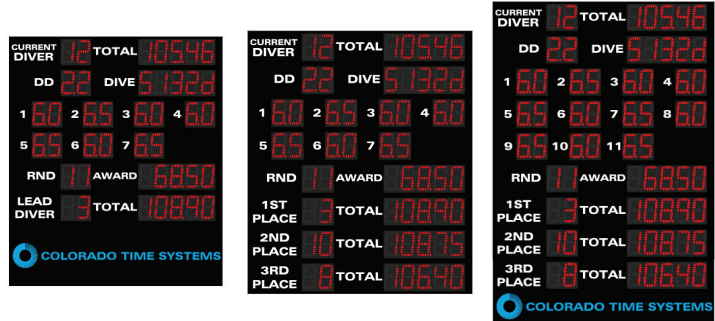
Standard enclosure color is black, but other color options are available.

Numeric Scoreboards

Otter Diving Boards



- 2.4GHz wireless scoring
- Indoor or outdoor use
- High visibility 5" LED digits
- Conformal coated digits and circuit board to protect against corrosion
- Brightness adjusts automatically to ambient light
- Integrated internal antennas for reliable communication
- Permanent wall mount or caddy



Diving scoreboards integrate wirelessly with System 6 and wireless adapter or the Gen7 Diving Software computer with wireless adapter or wired judging system.

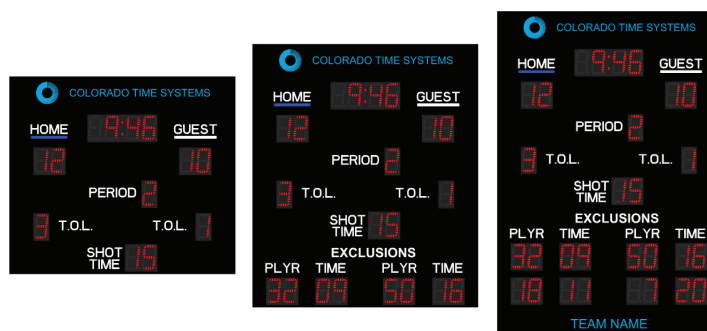
Otter Diving Scoreboards and Accessories	
Part #	Description
MS-0111	Basic diving scoreboard (7 judges) same size as 6-lane swimming
MS-0112	Diving - 7 judges plus top 3 places, same size as 6-lane swimming
MS-0113	Diving 11 judges plus top 3 places, same size as 8-lane swimming
MS-0167	Diving 7 judges plus top 3 places, same size as 8-lane swimming with space for signage above the diving data
CAD-MINI-4	Single sided caddy for MS-0111, MS-0112 7 judge scoreboards
CAD-MINI-4D	Double sided caddy for MS-0111, MS-0112 7 judge scoreboards
CAD-MINI-5	Single sided caddy for MS-0113, MS-0167 diving scoreboards
CAD-MINI-5D	Double sided caddy for MS-0113, MS-0167 diving scoreboards

Standard enclosure color is black, but other color options are available.

Numeric Scoreboards

Otter Water Polo Boards

- 2.4GHz wireless scoring
- Indoor or outdoor use
- High visibility 5" LED digits
- Conformal coated digits and circuit board to protect against corrosion
- Brightness adjusts automatically to ambient light
- Integrated internal antennas for reliable communication
- Permanent wall mount or caddy



Water polo scoreboards integrate wirelessly with System 6 and wireless adapter, wireless handheld controller, or wireless tabletop controller. Option to run wired with System 6 timing console. Optional external horn.

Otter Water Polo Scoreboards and Accessories	
Part #	Description
MS-0140	Basic water polo
MS-0141	Water polo, 1-line exclusion; same size as 6-lane swimming
MS-0142	Water polo, 2 line exclusion; same size as 8-lane swimming
MS-0171	Basic water polo, same size as 8-lane swimming with space for signage above and below the water polo data
MS-0174	Water polo, 1 line exclusion; same size as 10-lane swimming with space for signage above an below the water polo data
CAD-MINI-4	Single sided caddy for MS-0140, MS-0141 water polo scoreboards
CAD-MINI-4D	Double sided caddy for MS-0140, MS-0141 water polo scoreboards
CAD-MINI-5	Single sided caddy for MS-0142 water polo scoreboard
CAD-MINI-5D	Double sided caddy for MS-0142 water polo scoreboard

Standard enclosure color is black, but other color options are available.

Numeric Scoreboards

Mini LED Scoreboards

Mini scoreboards are an ideal solution for facilities requiring portability, or that are tight on space.

The mini LED scoreboard line provides the best of both worlds. It provides the same information as two lines of LED-R at one quarter of the size.

Features

- Lightweight and portable
- Includes legs and handle for easy portability
- Optional battery operation



Description	Portable P/N	Fixed P/N
Top line displays event/heat, bottom line displays lane/place/time (110V)	P01-1-0001	F01-1-0001
Top line displays event/heat, bottom line displays lane/place/time (220V)	P01-1-0001F	F01-1-0001F
Top and bottom lines display lane/place/time (110V)	P01-1-0002	F01-1-0002
Top and bottom lines display lane/place/time (220V)	P01-1-0002F	F01-1-0002F
Water polo - top line displays period/shot, bottom line displays score/game time (110V)	P01-1-0003	F01-1-0003
Water polo - top line displays period/shot, bottom line displays score/game time (220V)	P01-1-0003F	F01-1-0003F
Top line displays event/heat, bottom line is blank; available for limited artwork (110V)	P01-1-0004	F01-1-0004
Top line displays event/heat, bottom line is blank; available for limited artwork (220V)	P01-1-0004F	F01-1-0004F
Top line displays event/heat, bottom line has lane/place/time signage only (110V)	P01-1-0005	F01-1-0005
Top line displays event/heat, bottom line has lane/place/time signage only (220V)	P01-1-0005F	F01-1-0005F
Top line has lane/place/time signage only, bottom line displays lane/place/time (110V)	P01-1-0006	F01-1-0006
Top line has lane/place/time signage only, bottom line displays lane/place/time (220V)	P01-1-0006F	F01-1-0006F

Numeric Scoreboards

Multisport Scoreboards

Colorado Time Systems is pleased to offer a full line of scoreboards for non-aquatic sports. Contact your Sales Consultant for additional information.

Key Features

Durability: Each scoreboard is enclosed in a rugged powder-coated 5052-alloy aluminum chassis, and all digits and circuit boards are conformal coated to protect from harsh environments and withstand the test of time. The high gain flush mount patch antenna is uniquely mounted on an LED digit and protected by the Lexan cover to prevent breakage by errant balls and/or weather. Each numeric multisport scoreboard is covered by a 5-year warranty.

Integrated 2.4GHz wireless: Our numeric scoreboards utilize integrated 2.4GHz wireless technology, with 12 independent channels and 16 independent networks per channel that provide reliable communication for up to 192 separate games at a facility.

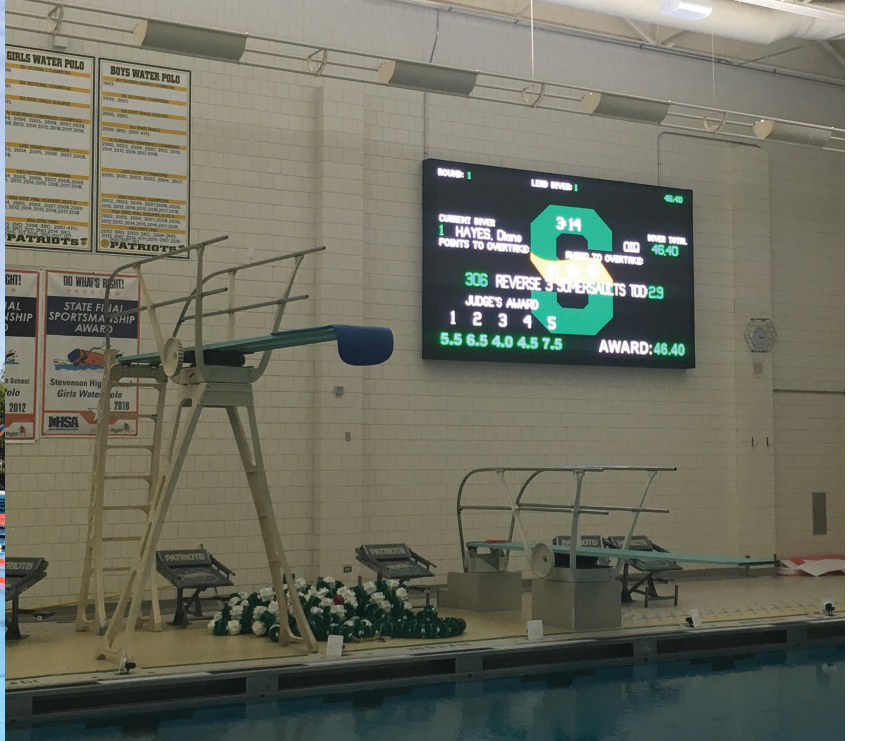
Service access: All digits and electronic components are accessed through the front face of the scoreboard. The digit covers are secured by quarter-turn slotted studs; which provide quick and convenient access to the electronic components behind them, and easy cleaning of the Lexan covers.

Customization options

- Select either all red, all amber, or mixed digit colors
- Enclosures can be customized to match your team colors
- Flexibility to select captions based on your application



VIDEO BOARDS



Video boards can be used as a standalone unit or combined with numeric scoreboards for added impact. Video boards display full color scoring data, text, graphics, animations, live video, video replays, and more.

Key features:

- Indoor or outdoor with pixel pitches as tight as 4mm
- Modular design
- Conformal coated
- Indoor SMD technology
- Video and camera ready
- DisplayLink+ software
- Versatile display controller

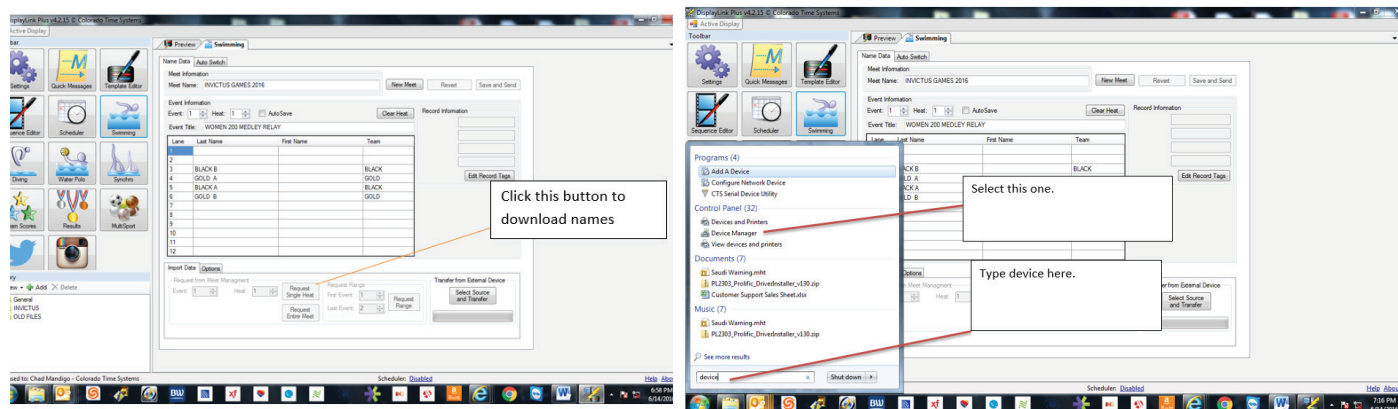
Installations





DisplayLink+ (DL+) software allows you to bring your matrix display to life with a myriad of features bound to entertain and captivate your audience.

DL+ software is a dynamic software interface program designed specifically for our LED matrix displays. DL+ provides robust handling of scoring, timing, graphics, animations, and video to your display. DL+ supports all aquatic sports (swimming, diving, water polo, and synchronized swimming), as well as a number of other sports.



Key Features:

Drag & drop animations and graphics: Use DL+ to display graphics and animation. Simply select a graphic or animation from the library window and drag it on top of the Active Display window. The matrix display will immediately show the chosen graphic or animation.

Multi-layer display: Display scoring data (templates) over video. Templates may also be made transparent



www.coloradotime.com | info@coloradotime.com

1551 E 11th St., Loveland, CO 80537
800-279-0111 | +1(970)667-1000 | +1(970)667-5876 (fax)