



2025



HERITAGE. SPEED. DEPENDABILITY

www.dynamicteamsports.com

 USD MSRP PRICING



OUR MISSION

Dynamic Team Sports is built for speed, efficiency and dependability. We remove the friction from ordering custom sportswear—making it fast, easy, and stress-free to get the highest quality uniforms and teamwear delivered on time.

With decades of experience and the largest dedicated sublimation factory in North America and the ability to scale globally, we fulfill orders quickly and accurately, whether it's one piece or a thousand.

Our 99.6% on-time delivery and near-zero defect rates prove it: we deliver what teams need, when they need it, at great value and without the headaches. We are the most dependable name in custom team apparel today, while building toward the innovation that will shape tomorrow.

Heritage. Speed. Dependability.

CREATOR+

Custom Uniform Builder, offering a seamless and personalized process to create unique and industry leading uniforms & apparel tailored to your exact needs

MACH5

5 DAY PROGRAM

Premium features and superior quality of our full dye cut and sew sublimated Mach5 series, produced in just 5 days

TABLE OF CONTENTS

BASEBALL	007	LACROSSE	050	SIDELINE	89
Jerseys	008	Jerseys & Shorts	051	Mach 5	90
Pants	013			Hoodies	92
Jackets	014	SOCCER	059	Warm-Ups	94
		Jerseys & Shorts	060	Outerwear	96
SOFTBALL	015			Polos & 1/4 Zips	98
Jerseys & Pants	016	TRACK & FIELD	064	Formal Wear	99
Jackets	023	Singlets & Shorts	065	Compression	100
BASKETBALL	024	VOLLEYBALL	068	ACCESSORIES	101
Jerseys & Shorts	025	Jerseys & Shorts	069		
Shooter Shirts	032			BAGS & BACKPACKS	106
		WRESTLING	074		
FOOTBALL	035	Singlets & Shorts	075	HATS	109
Jerseys	036				
Pants	041	RUGBY	077	FONTS & COLORS	112
		Jerseys & Shorts	078		
FLAG FOOTBALL	043			FABRICS	114
		CHEERLEADING	080		
ICE HOCKEY	046	Tops & Bottoms	081	HOW TO ORDER	116
Jerseys, Shells &	047				
Socks		CYCLING	086	MACH 5 LISTINGS	117

USD MSRP Pricing Throughout Catalog

10 Piece Minimum / 1 Piece Fill-in

15 Business Days Standard Production Time From Approval

5 & 10 Business Days Rush Service Available With Surcharge

Free Freight Available On Orders Over \$150

DIGIPERF

Innovative digital laser cut ventilation system, strategically placed on select pro-level styles

PRO SERIES

The Pro Series product offers the most advanced features designed to elevate both style and performance

MACH5

5 DAY PROGRAM

MACH5

2025 MAIN CATALOG | DYNAMIC TEAM SPORTS | www.dynamicteamsports.com



**BASEBALL
JERSEYS**



**SHOOTER
SHIRTS**



**FLAG
FOOTBALL**



**SOCCER
JERSEYS
& SHORTS**



**SIDELINE
SHIRTS
& SHORTS**

ESSENTIALS. FAST. ON-TIME.

CREW & V-NECK • SLEEVELESS, SHORT & LONG SLEEVE • 3 FABRIC OPTIONS
MEN'S, WOMEN'S & YOUTH • SHORTS W/ & W/O POCKETS



SHIPS 5 DAYS
FROM APPROVAL



BUILD
ONLINE



ADD YOUR TEAM
COLORS AND LOGOS

- Full dye cut & sew sublimation
- 10 piece minimum per style
- 100 piece maximum**

- Templated designs only
- Freight included
- No charge for names/numbers

****Delivery time will be quoted at approval for orders over 100 pcs**

15 business days standard production time from artwork approval /// Free freight on all orders over \$150

MORE THAN JUST THE BASICS. UNIFORMS IN 5 DAYS.



Lacrosse
Shooter Shirt

Page 56

Basketball
Jersey

Page 29

Track & Field
Singlet

Page 67



LOOK FOR THIS ICON TO FIND ALL PRODUCTS AVAILABLE IN MACH5

WHAT TO LOOK FOR

NEW

NEW ITEMS

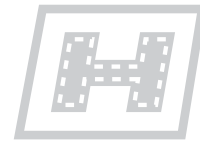
Our latest Catalog is packed with exciting new additions! **Be sure to look for the "NEW" icon next to each product**—some are brand-new designs, while others feature updated cuts, fresh fabric options, or improved details.

Whether it's a completely new style or a refreshed version of a favorite, there's something new to discover on nearly every page.



MACH 5

Items shipped 5 days after order submittal / approval



HYBRID

Select items that combine sublimation with twill and/or pre-dyed fabric



REVERSIBLE

Fully reversible items in either 2-ply or 1-ply fabric options



FAST TURN

Items shipped 10 days after order submittal / approval

PRO

Pro tier is our pinnacle uniform and apparel offering for players wanting the highest level features and performance.

This tier of product provides the most advanced features including upgraded stretch woven fabrics for style and durability, Digiperf laser venting for enhanced breathability, hidden snap buttons, enhanced sewing and finishing techniques and much more. For the individual or team that prefers the very best performance rather than "shoe brand" marketing.

SELECT

Select tier is our premium product offering that includes enhanced fabrics and performance features at competitive prices.

This tier of product offers advanced features such as 4-way stretch fabrics for enhanced comfort and range of motion, stretch mesh for maximum breathability, color matched findings and multi-fabric options for targeted performance gains. For the individual or team that wants quantifiable performance gains over traditional "trade brand" offerings.

CORE

Core tier is our entry level product that still offers premium performance and features at a more affordable price point.

Traditional and time-proven fabrics are chosen for task and sport specific demands and offer excellent durability and comfort. Moisture wicking and anti-microbial fabrics, reinforced sewing techniques and modern and stylish designs are hallmarks of our Core tier. For the individual or team that wants a performance driven and modern solution at an industry leading price value proposition.



 **DYNAMIC**

BASEBALL



CREATOR⁺

Check out the all-new Creator+ to explore all our available designs – you can easily design and order online today!



PRO **SERIES**

BREEZE

S/S SNAP FULL BUTTON JERSEY

PRO **SELECT** **CORE**

BA-MSS82-PRO

\$88.00

DESCRIPTION

- Elite/Pro level jersey
- Digiperf laser ventilation
- Hidden snap full button profile
- Scoop hemmed bottom
- Woven fabric for style/durability
- Excellent range of motion
- Excellent pick resistance

SIZING:

Men's: S-5XL

Youth: YXS-YXL

FABRICS:

Flexweave 1.4



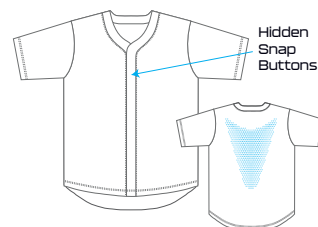
LASER CUT VENTILATION



PREMIUM WOVEN



4-WAY STRETCH



Hidden Snap Buttons

□ FLEXWEAVE 1.4 □ DIGIPERF



CUTTER

S/S FULL BUTTON JERSEY

PRO **SELECT** CORE

SELECT - BA-MSS02-SEL	\$66.00
CORE - BA-MSS02-COR	\$60.00

DESCRIPTION

- Select or Core level short sleeve jersey
- Traditional full button profile
- Scoop hemmed bottom
- Excellent durability and range of motion
- Excellent breathability

SIZING:

Men's: S-5XL
Youth: YXS-YXL

FABRICS:

Flex Aerofiber (Select)
Dynapin (Core) **NEW**



BREEZE

S/L SNAP FULL BUTTON JERSEY

PRO **SELECT** CORE

BA-MSL89-PRO	\$85.00
--------------	---------

DESCRIPTION

- Elite/Pro level sleeveless jersey
- Digiperf laser ventilation
- Hidden snap full button profile
- Scoop hemmed bottom
- Flexweave 1.4 woven fabric for style/durability
- Excellent range of motion & pick resistance

SIZING:

Men's: S-5XL
Youth: YXS-YXL

FABRICS:

Flexweave 1.4



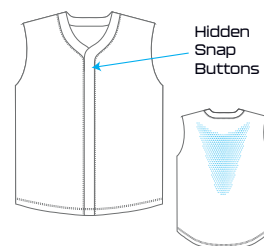
LASER CUT VENTILATION



PREMIUM WOVEN



4-WAY STRETCH



Hidden Snap Buttons

□ FLEXWEAVE 1.4 □ DIGIPERF



CUTTER

S/L FULL BUTTON JERSEY

PRO **SELECT** CORE

SELECT - BA-MSLO9-SEL **\$63.00**
CORE - BA-MSLO9-COR **\$57.00**

DESCRIPTION

- Select or Core level sleeveless jersey
- Traditional full button profile
- Scoop hemmed bottom
- Excellent durability and range of motion
- Excellent breathability

SIZING:

Men's: S-5XL
Youth: YXS-YXL

FABRICS:

Flex Aerofiber (Select)
Dynapin (Core) **NEW**



BREEZE

S/S SNAP 2-BUTTON JERSEY

PRO **SELECT** CORE

BA-MSS81-PRO **\$84.00**

DESCRIPTION

- Elite/Pro level short sleeve jersey
- Digiperf laser ventilation
- Hidden snap 2-button profile
- Scoop hemmed bottom
- Flexweave 1.4 woven fabric for style/durability
- Excellent range of motion & pick resistance

SIZING:

Men's: S-5XL
Youth: YXS-YXL

FABRICS:

Flexweave 1.4



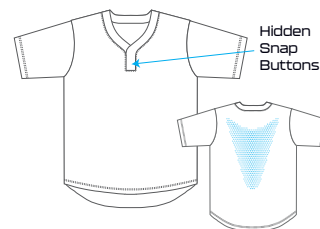
LASER CUT VENTILATION



PREMIUM WOVEN



4-WAY STRETCH



Hidden Snap Buttons

☐ FLEXWEAVE 1.4

☒ DIGIPERF



CUTTER S/S 2-BUTTON JERSEY

PRO **SELECT** CORE

SELECT - BA-MSS08-SEL **\$62.00**
CORE - BA-MSS08-COR **\$56.00**

DESCRIPTION

- Select or Core level short sleeve jersey
- Traditional 2- button profile
- Scoop hemmed bottom
- Excellent durability and range of motion
- Excellent breathability

SIZING:

Men's: S-5XL
Youth: YXS-YXL

FABRICS:

Flex Aerofiber (Select)
Dynapin (Core) **NEW**



CUTTER S/L 2-BUTTON JERSEY

PRO **SELECT** CORE

SELECT - BA-MSLO8-SEL **\$59.00**
CORE - BA-MSLO8-COR **\$53.00**

DESCRIPTION

- Select or Core level short sleeve jersey
- Traditional 2- button profile
- Scoop hemmed bottom
- Excellent durability and range of motion
- Excellent breathability

SIZING:

Men's: S-5XL
Youth: YXS-YXL

FABRICS:

Flex Aerofiber (Select)
Dynapin (Core) **NEW**



MACH 5

S/S V-NECK JERSEY

PRO **SELECT** CORE

CORE - SF-MSS51-DYN	\$27.00
SELECT - SF-MSS51-PIN	\$33.00
SELECT+ - SF-MSS51-ULT	\$37.00

DESCRIPTION

- Set-in sleeves
- Drop tail design
- Neck taping
- Self material collar

SIZING:

Men's: S-5XL
Youth: XS-XL

FABRICS:

Dynalite (Core)
Dynapin (Select)
Ultraflex (Select+)



MACH 5

S/S CREW NECK JERSEY

PRO **SELECT** CORE

CORE - SF-MSS50-DYN	\$27.00
SELECT - SF-MSS50-PIN	\$33.00
SELECT+ - SF-MSS50-ULT	\$37.00

DESCRIPTION

- Set-in sleeves
- Drop tail design
- Neck taping
- Self material collar

SIZING:

Men's: S-5XL
Youth: XS-XL

FABRICS:

Dynalite (Core)
Dynapin (Select)
Ultraflex (Select+)



NEW

SPEED BASEBALL PANTS/KNICKERS

PRO **SELECT** CORE

PANT - BA-MPT02-SEL

\$76.00

KNICKER - BA-MPT01-SEL

\$68.00

DESCRIPTION

- Select level baseball pant & knicker
- Heavyweight Durafiber fabric
- Reinforced knees
- Silicone Anti-Slip waistband

SIZING:

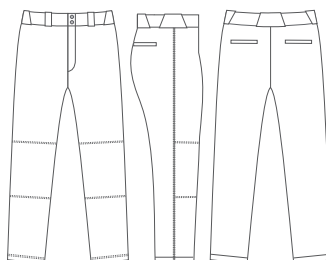
Men's: S-3XL

Youth: YXS-YXL

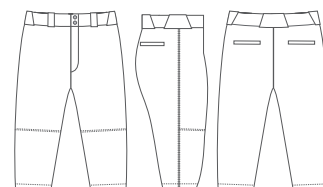
FABRICS:

Durafiber

Full Length



Knicker Length





NEW

ICON WOVEN CAGE JACKET

PRO SELECT CORE

L/S - BA-MLS07-SEL

\$70.00

S/S - BA-MSS07-SEL

\$66.00

DESCRIPTION

- Elite/Pro level cage jacket
- 1/4 Zip design
- Flex woven fabric for full range of motion
- Excellent pick resistance
- 4-inch slits on sides of body

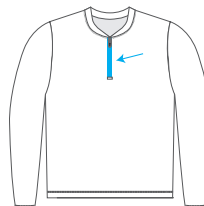
SIZING:

Men's: S-3XL
Youth: YS-YXL

FABRICS:

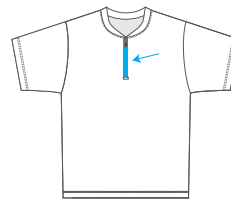
Flexweave 1.9

Long Sleeve



Color-Matched
Zipper

Short Sleeve

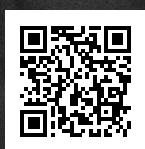


Color-Matched
Zipper



 **DYNAMIC**

SOFTBALL



CREATOR⁺

Check out the all-new Creator+ to explore all our available designs – you can easily design and order online today!



PR SERIES

BREEZE

S/S SNAP FAUX BUTTON JERSEY

PRO **SELECT** **CORE**

SB-WSS88-PRO

\$85.00

DESCRIPTION

- Elite/Pro level short sleeve jersey
- Digiperf laser ventilation
- 1 hidden snap button at top with faux front closure
- Flexweave 1.4 woven fabric for style/durability
- Excellent range of motion & pick resistance

SIZING:

Women's: S-3XL

Girls: GXS-GXL

FABRICS:

Flexweave 1.4



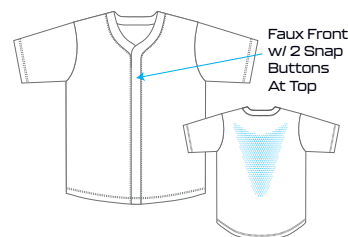
LASER CUT VENTILATION



PREMIUM WOVEN



4-WAY STRETCH



FLEXWEAVE 1.4 DIGIPERF





RISE S/S FAUX BUTTON JERSEY

PRO **SELECT** CORE

SELECT - SB-WSS08-SEL **\$63.00**

CORE - SB-WSS08-COR **\$57.00**

DESCRIPTION

- Select & Core level premium jersey
- 2 buttons at top with faux front closure
- 4-way stretch fabric
- Excellent durability and range of motion
- Excellent breathability

SIZING:

Women's: S-3XL
Girls: GXS-GXL

FABRICS:

Flex Aerofiber (Select)
Dynapin (Core) **NEW**

NEW

BREEZE S/L SNAP FAUX BUTTON JERSEY

PRO **SELECT** CORE

SB-WSL88-PRO **\$82.00**

DESCRIPTION

- Elite/Pro level sleeveless jersey
- Digiperf laser ventilation
- 1 hidden snap button at top with faux front closure
- Flexweave 1.4 woven fabric for style/durability
- Excellent range of motion & pick resistance

SIZING:

Women's: XS-3XL

FABRICS:

Flexweave 1.4



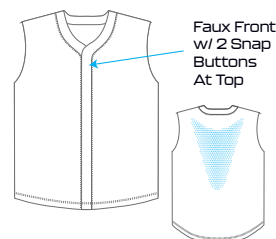
LASER CUT
VENTILATION



PREMIUM
WOVEN



4-WAY
STRETCH



□ FLEXWEAVE 1.4 ■ DIGIPERF



RISE S/L FAUX BUTTON JERSEY

PRO **SELECT** CORE

SELECT - SB-WSLO8-SEL **\$60.00**
CORE - SB-WSLO8-COR **\$54.00**

DESCRIPTION

- Select or Core level sleeveless jersey
- 2 buttons at top with faux front closure
- Excellent durability and range of motion
- Excellent breathability

SIZING:

Women's: XS-3XL

FABRICS:

Flex Aerofiber (Select)
Dynapin (Core) **NEW**



BREEZE S/S SNAP 1-BUTTON JERSEY

PRO **SELECT** CORE

SB-WSS89-PRO **\$81.00**

DESCRIPTION

- Elite/Pro level short sleeve jersey
- Digiperf laser ventilation
- Hidden snap 1-button profile
- Flexweave 1.4 woven fabric for durability
- Excellent range of motion
- Excellent pick resistance

SIZING:

Women's: S-3XL
Girl's: GXS-GXL

FABRICS:

Flexweave 1.4



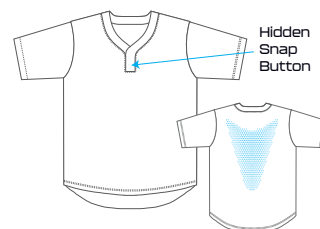
LASER CUT
VENTILATION



PREMIUM
WOVEN



4-WAY
STRETCH



□ FLEXWEAVE 1.4 ■ DIGIPERF



RISE

S/S 1-BUTTON JERSEY

PRO **SELECT** CORE

SELECT - SB-WSS09-SEL **\$59.00**

CORE - SB-WSS09-COR **\$53.00**

DESCRIPTION

- Select or Core level short sleeve jersey
- Traditional 1-button profile
- Excellent durability and range of motion
- Excellent breathability

SIZING:

Women's: S-3XL
Girl's: GXS-GXL

FABRICS:

Flex Aerofiber (Select)
Dynapin (Core) **NEW**



BREEZE

S/L SNAP 1-BUTTON JERSEY

PRO **SELECT** CORE

SB-WSL89-PRO **\$78.00**

DESCRIPTION

- Elite/Pro level sleeveless jersey
- Digiperf laser ventilation
- Hidden snap 1-button profile
- Flexweave 1.4 woven fabric for style/durability
- Excellent range of motion & pick resistance

SIZING:

Women's: XS-3XL

FABRICS:

Flexweave 1.4



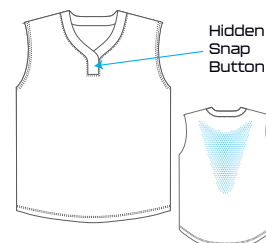
LASER CUT
VENTILATION



PREMIUM
WOVEN



4-WAY
STRETCH



□ FLEXWEAVE 1.4 ■ DIGIPERF



RISE S/L 1-BUTTON JERSEY

PRO **SELECT** CORE

SELECT - SB-WSLO9-SEL	\$56.00
CORE - SB-WSLO9-COR	\$50.00

DESCRIPTION

- Select or Core level sleeveless jersey
- Traditional 1-button profile
- Excellent durability and range of motion
- Excellent breathability

SIZING:

Women's: XS-3XL

FABRICS:

Flex Aerofiber (Select)
Dynapin (Core) **NEW**



MACH 5 S/S V-NECK JERSEY

PRO **SELECT** CORE

CORE - SF-WSS51-DYN	\$27.00
SELECT - SF-WSS51-PIN	\$33.00
SELECT+ - SF-WSS51-ULT	\$37.00

DESCRIPTION

- Short sleeve v-neck design
- Set-in sleeves
- Drop tail design
- Neck taping
- Self material collar

SIZING:

Women's: S-3XL
Youth: XS-XL

FABRICS:

Dynalite (Core)
Dynapin (Select)
Ultraflex (Select+)



NEW

MACH 5

S/L RACERBACK JERSEY

PRO **SELECT** CORE

CORE - SF-WSL53-DYN	\$26.00
SELECT - SF-WSL53-PIN	\$32.00
SELECT+ - SF-WSL53-ULT	\$36.00

DESCRIPTION

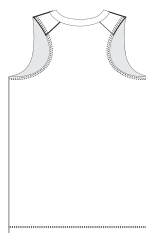
- Sleeveless racerback
- v-neck design
- Neck taping
- Self material collar

SIZING:

Women's: S-3XL
Youth: XS-XL

FABRICS:

Dynalite (Core)
Dynapin (Select)
Ultraflex (Select+)



Racerback
Cut



MACH 5

S/S CREW NECK JERSEY

PRO **SELECT** CORE

CORE - SF-WSS50-DYN	\$27.00
SELECT - SF-WSS50-PIN	\$33.00
SELECT+ - SF-WSS50-ULT	\$37.00

DESCRIPTION

- Short sleeve crew neck design
- Set-in sleeves
- Drop tail design
- Neck taping
- Self material collar

SIZING:

Women's: S-3XL
Youth: XS-XL

FABRICS:

Dynalite (Core)
Dynapin (Select)
Ultraflex (Select+)



MACH 5

S/L CREW NECK JERSEY

PRO **SELECT** CORE

CORE - SF-WSL50-DYN	\$26.00
SELECT - SF-WSL50-PIN	\$32.00
SELECT+ - SF-WSL50-ULT	\$36.00

DESCRIPTION

- Sleeveless crew neck design
- Set-in sleeves
- Drop tail design
- Neck taping
- Self material collar

SIZING:

Women's: S-3XL
Youth: XS-XL

FABRICS:

Dynalite (Core)
Dynapin (Select)
Ultraflex (Select+)



NEW

SPEED KNICKER

PRO **SELECT** CORE

DRAWSTRING - SB-WPT01-SEL	\$64.00
W/ BELT - SB-WPT02-SEL	\$72.00

DESCRIPTION

- Select level premium knicker pant w/ or w/o belt
- Heavyweight fabric for enhanced durability
- Silicone Anti-Slip waistband
- 2 back pockets

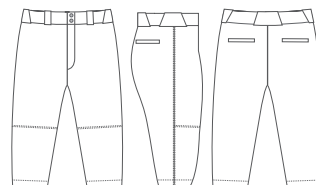
SIZING:

Women's: XS-3XL
Girls: GXS-GXL

FABRICS:

Durafiber

Knicker Length



NEW

ICON CAGE JACKET

PRO SELECT CORE

L/S - SB-WLS07-SEL **\$70.00**

S/S - SB-WSS07-SEL **\$66.00**

DESCRIPTION

- Elite/Pro level cage jacket
- 1/4 Zip design
- Flex woven fabric for full range of motion
- Excellent pick resistance
- 4-inch slits on sides of body

SIZING:

Women's: XS-2XL

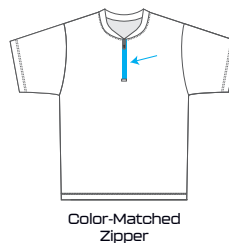
FABRICS:

Flexweave 1.9

Long Sleeve



Short Sleeve





BASKETBALL



CREATOR+

Check out the all-new Creator+ to explore all our available designs – you can easily design and order online today!

PRO^{SERIES}**BUZZER BEATER
JERSEY****PRO** **SELECT** **CORE**MEN'S - BB-MSL81-PRO
WOMEN'S - BB-WSL81-PRO**\$72.00****DESCRIPTION**

- Elite/Pro level jersey
- Digiperf laser ventilation
- Multi-panel construction with modern collar
- Flexweave 1.4 woven front for style & durability
- Flex Aerofiber mesh back for breathability
- Ribbed arm openings for enhanced comfort

SIZING:

Men's: S-5XL

Youth: YS-YXL

Women's: XS-3XL

FABRICS:

Flexweave 1.4

Flex Aerofiber

Rib

**LASER CUT
VENTILATION****PREMIUM
WOVEN****4-WAY
STRETCH**

FLEXWEAVE 1.4
 DIGIPERF

FLEX AEROFIBER





DOMINATE JERSEY

PRO SELECT CORE

MEN'S - BB-MSL82-PRO
WOMEN'S - BB-WSL82-PRO

\$72.00

DESCRIPTION

- Elite/Pro level jersey
- Digiperf laser ventilation
- Multi-panel construction with v-neck collar
- Flexweave 1.4 woven front for style & durability
- Flex Aerofiber mesh back for breathability
- Ribbed arm openings for enhanced comfort

SIZING: Men's: S-5XL

Youth: YS-YXL

Women's: XS-3XL

FABRICS: Flexweave 1.4

Flex Aerofiber

Rib



LASER CUT
VENTILATION



PREMIUM
WOVEN



4-WAY
STRETCH



FLEXWEAVE 1.4

DIGIPERF

FLEX AEROFIBER

DB SHORT

PRO SELECT CORE

MEN'S 5" - BB-MSH81-PRO5
MEN'S 7" - BB-MSH81-PRO7
MEN'S 9" - BB-MSH81-PRO9
WOMEN'S 5" - BB-WSH81-PRO5
WOMEN'S 7" - BB-WSH81-PRO7

\$60.00

DESCRIPTION

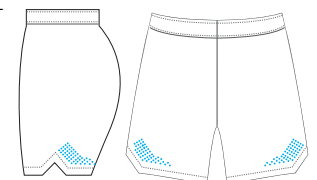
- Elite/Pro level shorts
- Digiperf laser ventilation
- Men's Inseam 5", 7" or 9" & Women's Inseam 5" or 7"
- Flexweave 1.4 woven for style/durability
- Dynamic jacquard waistband w/ lace drawstring
- Waistband plate for additional customization

SIZING: Men's: S-5XL

Youth: YS-YXL

Women's: XS-3XL

FABRICS: Flexweave 1.4



FLEXWEAVE 1.4

DIGIPERF





NEW

ASSIST V-NECK JERSEY

PRO **SELECT** CORE

MEN'S - BB-MSLO2-SEL
WOMEN'S - BB-WSLO2-SEL

\$50.00

DESCRIPTION

- Select jersey with traditional v-neck collar
- Dynapin fabric for excellent breathability
- Ribbed collar and arm openings
- Excellent durability and range of motion

SIZING: Men's: S-5XL
Youth: YS-YXL
Women's: XS-3XL

FABRICS: Dynapin
Rib



NEW

ASSIST CREW NECK JERSEY

PRO **SELECT** CORE

MEN'S - BB-MSLO1-SEL
WOMEN'S - BB-WSLO1-SEL

\$50.00

DESCRIPTION

- Select jersey with traditional crew neck collar
- Dynapin fabric for excellent breathability
- Ribbed collar and arm openings
- Excellent durability and range of motion

SIZING: Men's: S-5XL
Youth: YS-YXL
Women's: XS-3XL

FABRICS: Dynapin
Rib



NEW

ASSIST SHORTS

PRO **SELECT** CORE

MEN'S 5" INSEAM - BB-MSHO1-SEL5
 MEN'S 7" INSEAM - BB-MSHO1-SEL7
 MEN'S 9" INSEAM - BB-MSHO1-SEL9
 WOMEN'S 5" INSEAM - BB-WSHO1-SEL5
 WOMEN'S 7" INSEAM - BB-WSHO1-SEL7

\$45.00

DESCRIPTION

- Select level premium shorts
- Men's Inseam 5", 7" or 9" & Women's Inseam 5" or 7"
- Dynamic jacquard waistband w/ lace drawstring
- Waistband plate for additional customization

SIZING:

FABRICS: Dynapin

Men's: S-5XL

Youth: YS-YXL

Women's: XS-3XL



CROSSOVER CREW NECK JERSEY 5

PRO **SELECT** **CORE**

MEN'S - BB-MSLO1-COR
 WOMEN'S - BB-WSLO1-COR

\$46.00

DESCRIPTION

- Core jersey with 2 panel construction
- Lightweight interlock for style/comfort/performance
- Overlook stitching with double stitched hems
- Sublimated ribbed collar and armholes

SIZING:

FABRICS: Dyalite / Rib

Men's: S-5XL

Youth: YXS-YXL

Women's: XS-3XL



ZONE

V-NECK JERSEY

PRO SELECT **CORE**

MEN'S - BB-MSLO2-COR
WOMEN'S - BB-WSLO2-COR

\$46.00

DESCRIPTION

- Core jersey with 2 panel construction
- Lightweight interlock for style/comfort/performance
- Overlock stitching with double stitched hems
- Sublimated ribbed collar and armholes

SIZING:

FABRICS: Dynalite / Rib

Men's: S-5XL

Youth: YXS-YXL

Women's: XS-3XL



MACH 5

SHORT

PRO SELECT **CORE**

5" MEN'S (Dynalite) - SF-MSH55-DYN5

\$30.00

7" MEN'S (Dynalite) - SF-MSH53-DYN7

9" MEN'S (Dynalite) - SF-MSH51-DYN9

3" WOMEN'S (Dynalite) - SF-WSH55-DYN3

NEW

5" WOMEN'S (Dynalite) - SF-WSH53-DYN5

7" WOMEN'S (Dynalite) - SF-WSH51-DYN7

DESCRIPTION

- Core level basketball short
- Inner lace drawcord
- Cover hemmed leg openings
- 5", 7", 9" (Men's) and 3", 5", 7" (Women's) inseams

SIZING:

FABRICS:

Men's: S-5XL

Dynalite

Youth: XS-XL

Women's: S-3XL

FABRIC
DETAILFELL SEAM
STITCHING

NEW

PIVOT

SINGLE PLY REVERSIBLE JERSEY

PRO **SELECT** COREMEN'S - BB-MSLO7-SEL
WOMEN'S - BB-WSLO7-SEL

\$55.00

DESCRIPTION

- Select level reversible jersey
- Single ply for lightweight and breathability
- Cover hemmed armholes and neck
- Fell seam stitching

SIZING:

Men's: S-5XL
Youth: YXS-YXL
Women's: XS-3XL

FABRICS:

Dualwick

☐ SIDE A ☒ SIDE B

NEW

PIVOT

SINGLE PLY REVERSIBLE SHORTS

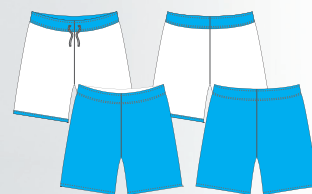
PRO **SELECT** COREMEN'S 5" - BB-MSHO7-SEL5
MEN'S 7" - BB-MSHO7-SEL7
MEN'S 9" - BB-MSHO7-SEL9
WOMEN'S 5" - BB-WSHO7-SEL5
WOMEN'S 7" - BB-WSHO7-SEL7

\$55.00

DESCRIPTION

- Select level reversible short
- Men's 5", 7" or 9" & Women's 5" or 7" inseam
- Inner lace drawstring
- Fell seam stitching

SIZING:

Men's: S-5XL
Youth: YS-YXL
Women's: XS-3XL

FABRICS:

Dualwick

☐ SIDE A ☒ SIDE B



PULSE

REVERSIBLE JERSEY

PRO SELECT **CORE**

MEN'S - BB-MSLO5-COR
WOMEN'S - BB-WSLO5-COR

\$50.00

DESCRIPTION

- Core level reversible jersey
- No grain through - any design/color on both sides with no ghosting
- Lightweight interlock for style/comfort/performance
- Overlook stitching

SIZING:

Men's: S-5XL
Youth: YXS-YXL
Women's: XS-3XL

FABRICS:

Dynalite

PULSE

REVERSIBLE SHORTS

PRO SELECT **CORE**

MEN'S 5" - BB-MSHO5-COR5
MEN'S 7" - BB-MSHO5-COR7
MEN'S 9" - BB-MSHO5-COR9
WOMEN'S 5" - BB-WSHO5-COR5
WOMEN'S 7" - BB-WSHO5-COR7

\$50.00

DESCRIPTION

- Core level reversible short
- No grain through - any design/color on both sides with no ghosting
- Men's 5", 7" or 9" & Women's 5" or 7" inseam
- Inner lace drawstring
- Overlook stitching

SIZING:

Men's: S-5XL
Youth: YS-YXL
Women's: XS-3XL

FABRICS:

Dynalite



MACH 5 ⁵

S/S CREW NECK T-SHIRT (GREAT FOR SHOOTER SHIRTS)

PRO **SELECT** CORE

DYNALITE - SF-MSS50-DYN

\$27.00

+\$6.00 For Dynapin / +\$10.00 for Ultraflex

**For full list of SKUs see page 117

DESCRIPTION

- Set-in sleeves
- Drop tail design
- Neck taping
- Self material collar

SIZING:

Men's: S-5XL
Women's: S-3XL
Youth: XS-XL

FABRICS:

Dynalite (Core)
Dynapin (Select)
Ultraflex (Select+)



MACH 5 ⁵

L/S CREW NECK T-SHIRT (GREAT FOR SHOOTER SHIRTS)

PRO **SELECT** CORE

DYNALITE - SF-MLS50-DYN

\$32.00

+\$6.00 For Dynapin / +\$10.00 for Ultraflex

**For full list of SKUs see page 117

DESCRIPTION

- Set-in sleeves
- Drop tail design
- Neck taping
- Self material collar

SIZING:

Men's: S-5XL
Women's: S-3XL
Youth: XS-XL

FABRICS:

Dynalite (Core)
Dynapin (Select)
Ultraflex (Select+)



MACH 5 ⁵

S/L HOODED T-SHIRT (GREAT FOR SHOOTER SHIRTS)

PRO **SELECT** CORE

DYNALITE - SF-MSL52-DYN

\$34.00

+\$6.00 For Dynapin / +\$10.00 for Ultraflex

**For full list of SKUs see page 117

DESCRIPTION

- Drop tail design
- Neck taping
- Single layer hood

SIZING:

Men's: S-5XL
Women's: S-3XL
Youth: XS-XL

FABRICS:

Dynalite (Core)
Dynapin (Select)
Ultraflex (Select+)



MACH 5 ⁵

S/S HOODED T-SHIRT (GREAT FOR SHOOTER SHIRTS)

PRO **SELECT** CORE

DYNALITE - SF-MSS52-DYN

\$35.00

+\$6.00 For Dynapin / +\$10.00 for Ultraflex

**For full list of SKUs see page 117

DESCRIPTION

- Set-in sleeves
- Drop tail design
- Neck taping
- Single layer hood

SIZING:

Men's: S-5XL
Women's: S-3XL
Youth: XS-XL

FABRICS:

Dynalite (Core)
Dynapin (Select)
Ultraflex (Select+)



MACH 5 ⁵

L/S HOODED T-SHIRT (GREAT FOR SHOOTER SHIRTS)

PRO **SELECT** CORE

DYNALITE - SF-MLS52-DYN

\$40.00

+\$6.00 For Dynapin / +\$10.00 for Ultraflex

**For full list of SKUs see page 117

DESCRIPTION

- Set-in sleeves
- Drop tail design
- Neck taping
- Single layer hood

SIZING:

Men's: S-5XL
Women's: S-3XL
Youth: XS-XL

FABRICS:

Dynalite (Core)
Dynapin (Select)
Ultraflex (Select+)



TEAR AWAY PANTS

PRO SELECT **CORE**

BB-MPT01-COR

\$80.00

DESCRIPTION

- Traditional Core level Tear Away pant
- Dyna Dry fabric body
- Dazzle reinforcing side strip insert
- Full snap release sides
- Reinforced stitching throughout

SIZING:

Men's: S-4XL
Youth: YS-YL

FABRICS:

Dyna Dry
Dazzle





 **DYNAMIC**

FOOTBALL



CREATOR⁺

Check out the all-new Creator+ to explore all our available designs – you can easily design and order online today!

PRO^{SERIES}

NEW

HYBRID BLITZ ^H
JERSEY**PRO** **SELECT** **CORE**

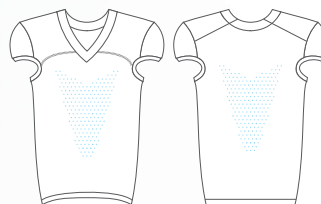
FB-MSS82-PRO

\$110.00**DESCRIPTION**

- Pro/Elite level jersey with tapered fit
- All-over sublimated jersey
- Heavyweight Proflex spandex fabric
- Cap sleeves and cinch bottom
- Digiperf laser ventilation
- Multi-panel construction and triple stitched seams
- Double layer reinforced shoulders & reinforced taping in key areas (including collar)
- Custom sublimated twill numbers* & home plate
- Embroidered front team name* (1-color only)

SIZING: Men's: S-5XL **FABRICS:** Proflex
Youth: YS-Y2XL

* One font available for numbers / team names



PROFLEX

DIGIPERF

LASER CUT
VENTILATIONHEAVY
WEIGHT**BLITZ**
PANT**PRO** **SELECT** **CORE**

CONSTRUCTED - FB-MPT82-PRO

\$82.00

UNCONSTRUCTED - FB-MPT83-PRO

\$72.00

SEE PAGE 41 FOR DETAILS

HYBRID PRO

JERSEY

PRO **SELECT** **CORE**

FB-MSS83-PRO

\$92.00

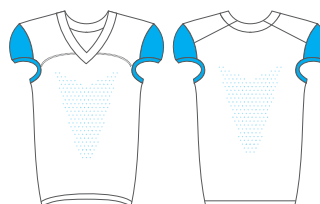
DESCRIPTION

- Pro/Elite level jersey with tapered fit
- Pre-dyed body & sublimated sleeves
- Digiperf laser ventilation
- Sublimated twill numbers front and back*
- Sublimated home plate at bottom of collar
- Embroidered team name* (1-color only)
- Same sewing features as Blitz jersey

SIZING: Men's: S-5XL **FABRICS:** Proflex
Youth: YS-Y2XL

* One font available for numbers / team names

Available Base Colors



LASER CUT VENTILATION



HEAVY WEIGHT

☐ PRE-DYE PROFLEX ☐ DIGIPERF
☒ SUBLIMATED PROFLEX

HYBRID PRO

PANT

PRO **SELECT** **CORE**

CONSTRUCTED - FB-MPT80-PRO

\$70.00

UNCONSTRUCTED - FB-MPT81-PRO

\$60.00

SEE PAGE 41 FOR DETAILS

ALL HYBRID FOOTBALL JERSEYS INCLUDE



FULLY CUSTOMIZABLE
SLEEVE INSERTS



FULL-COLOR SUBLIMATED
TACKLE TWILL NUMBERS



TWILL HOME PLATE &
EMBROIDERED TEAM NAME





NEW

HYBRID RUSH

JERSEY

PRO SELECT **CORE**

FB-MSS09-COR

\$72.00

DESCRIPTION

- Core level all-over sublimated jersey
- 8 panel construction & triple stitched seams
- Double layer reinforced shoulders
- Heavyweight Proflex spandex and mesh fabric for comfort and performance
- Same sewing features as Blitz jersey
- Custom sublimated twill numbers*
- Embroidered front team name* (1-color only)

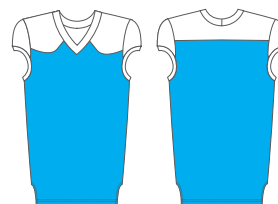
SIZING: Men's: S-5XL

FABRICS: Proflex

Youth: YS-Y2XL

Proflex Mesh

* One font available for numbers / team names



 PROFLEX  PROFLEX MESH

BLITZ

JERSEY

PRO SELECT **CORE**

FB-MSS81-PRO

\$90.00

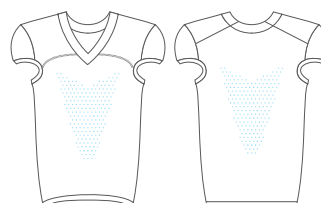
DESCRIPTION

- Pro/Elite level jersey with tapered fit
- Heavyweight Proflex spandex fabric
- Cap sleeves and cinch bottom
- Digiperf laser ventilation
- Multi-panel construction & triple stitched seams
- Double layer reinforced shoulders
- Reinforced taping in key areas (including collar)

SIZING: Men's: S-5XL

FABRICS: Proflex

Youth: YS-Y2XL



 PROFLEX  DIGIPERF



LASER CUT
VENTILATION



HEAVY
WEIGHT



RUSH ^{FT} JERSEY

PRO SELECT **CORE**

FB-MSS02-COR

\$52.00

DESCRIPTION

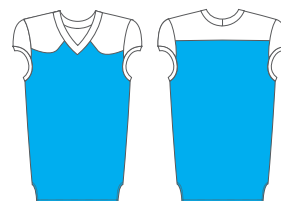
- Core level jersey
- 8 panel construction & triple stitched seams
- Double layer reinforced shoulders
- Heavyweight Proflex spandex and mesh fabric for comfort and performance
- Same sewing features as Blitz jersey

SIZING: Men's: S-5XL

FABRICS: Proflex

Youth: YS-Y2XL

Proflex Mesh



PROFLEX PROFLEX MESH



RESPECT FOOTBALL JERSEY

PRO SELECT **CORE**

FB-MSS06-COR

\$68.00

DESCRIPTION

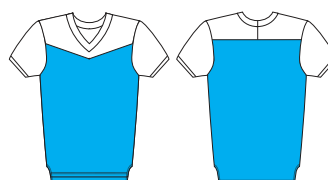
- Core level jersey
- Motion sleeve & 8 panel construction
- Double layer reinforced shoulders
- Reinforced taping in key areas (including collar)
- All seams triple stitched

SIZING: Men's: S-5XL

FABRICS: Proflex

Youth: YS-Y2XL

Proflex Mesh



PROFLEX PROFLEX MESH



SHOTGUN

REVERSIBLE JERSEY

PRO SELECT CORE

FB-MSS85-PRO

\$94.00

DESCRIPTION

- Pro/Elite level single ply reversible jersey
- Heavyweight Proflex spandex fabric
- Digiperf laser ventilation
- Multi-panel construction & triple stitched seams
- Reinforced taping in key areas (including collar)

SIZING:

Men's: S-5XL

Youth: YS-Y2XL

FABRICS:

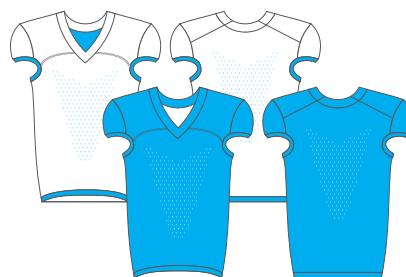
Proflex



LASER CUT
VENTILATION



HEAVY
WEIGHT



 SIDE A  SIDE B



Sublimated Mesh
Side Insert

HYBRID PRO

PANT

PRO SELECT CORE

CONSTRUCTED - FB-MPT80-PRO \$70.00
UNCONSTRUCTED - FB-MPT81-PRO \$60.00

DESCRIPTION

- Pro/Elite level no-fly pant
- Heavyweight Proflex spandex fabric
- Slotted silicone anti-slip waistband
- Integrated belt (constructed) or drawstring (unconstructed)
- Built-in thigh (constructed only) and knee pad pockets

SIZING: Men's: S-5XL
Youth: YS-YXL

FABRICS: Proflex
Proflex Mesh

Available Base Colors



BLITZ

PANT

PRO SELECT CORE

CONSTRUCTED - FB-MPT82-PRO \$82.00
UNCONSTRUCTED - FB-MPT83-PRO \$72.00

DESCRIPTION

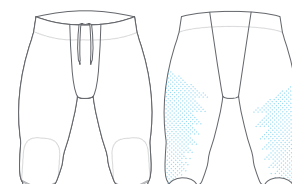
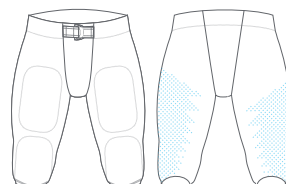
- Pro/Elite level no-fly pant
- Heavyweight Proflex spandex fabric
- Digiperf laser ventilation on back of leg
- Slotted silicone anti-slip waistband
- Integrated belt (constructed) or drawstring (unconstructed)
- Built-in thigh (constructed only) and knee pad pockets

SIZING: Men's: S-5XL
Youth: YS-YXL

FABRICS: Proflex

Constructed

Unconstructed


 PROFLEX
  DIGIPERF

 PROFLEX
  DIGIPERF



RUSH FT PANT

PRO **SELECT** CORE

CONSTRUCTED - FB-MPT05-SEL **\$58.00**

UNCONSTRUCTED - FB-MPT06-SEL **\$48.00**

DESCRIPTION

- Select level pant
- Heavyweight spandex fabric for comfort and durability
- Slotted silicone anti-slip waistband
- Integrated belt, no-fly design
- Built-in thigh (constructed only) and knee pad pockets

SIZING: Men's: S-5XL

FABRICS: Proflex

Youth: YXS-YXL



REP FANWEAR JERSEY

PRO **SELECT** CORE

MEN'S - FB-MSS10-SEL

\$57.00

WOMEN'S - FB-WSS10-SEL

DESCRIPTION

- Select level jersey
- No-pad fit
- 7 panel construction
- Heavyweight spandex body with medium weight mesh side panels
- Reinforced overlook stitching on all seams

SIZING: Men's: S-5XL

FABRICS: Flex Aerofiber

Youth: Y3XS-YXL

Flex Durafiber

Women's: XS-4XL

A young man is shown from the chest up, wearing a dark-colored flag football jersey with the number 55. He is holding a football with both hands. The background is dark and out of focus. A bright orange vertical bar is on the right side of the image.

 **DYNAMIC**

FLAG FOOTBALL



CREATOR+

Check out the all-new Creator+ to explore all our available designs – you can easily design and order online today!



QUEST SHORT SLEEVE JERSEY

PRO **SELECT** CORE

MEN'S - FF-MSS01-SEL
WOMEN'S - FF-WSS01-SEL

\$57.00

DESCRIPTION

- Select level jersey
- Heavyweight spandex fabric for performance/durability
- 2 panel construction
- Double overlook stitching
- Binding trim on arm and neck openings

SIZING:

Men's: XS-5XL
Youth: YS-YXL
Women's: XS-3XL

FABRICS:

Flex Durafiber
Flex Aerofiber

15 business days standard production time from artwork approval /// Free freight on all orders over \$150



NEW

BASE COMPRESSION JERSEY

PRO **SELECT** CORE

MEN'S SLEEVELESS - SF-MSLO7-SEL	\$40.00
MEN'S SHORT SLEEVE - SF-MSSO7-SEL	\$44.00
MEN'S LONG SLEEVE - SF-MLS07-SEL	\$48.00
WOMEN'S SHORT SLEEVE - SF-WSSO7-SEL	\$44.00
WOMEN'S LONG SLEEVE - SF-WLS07-SEL	\$48.00

DESCRIPTION

- Modern design and reinforced seams
- Compression spandex body
- Flex Aerofiber back panel for breathability
- Accent flat lock stitching

SIZING:

Men's: XS-5XL
Youth: YXS-YXL
Women's: XS-3XL

FABRICS:

Flex Compression 2.2
Flex Aerofiber



QUEST ⁵ WOVEN FIELD SHORTS

PRO **SELECT** CORE

MEN'S 5" - FF-MSHO4-SEL5	\$40.00
MEN'S 8" - FF-MSHO1-SEL8	
WOMEN'S 2" - FF-WSHO1-SEL	

DESCRIPTION

- Select level woven short
- Flexweave 1.4 lightweight woven fabric
- Reinforced seams
- Excellent range of motion and moisture management

SIZING:

Men's: XS-5XL
Youth: YXS-YXL
Women's: XS-3XL

FABRICS:

Flexweave 1.4



QUEST ⁵ COMPRESSION SHORTS

PRO **SELECT** CORE

MEN'S - FF-MSHO2-SEL	\$44.00
WOMEN'S - FF-WSHO2-SEL	

DESCRIPTION

- Select level compression short
- Flex Stretch spandex fabric
- Reinforced seams
- Excellent range of motion and moisture management

SIZING:

Men's: XS-5XL
Youth: YXS-YXL
Women's: XS-3XL
Girl's: GS-GL

FABRICS:

Flex Stretch



 **DYNAMIC**

HOCKEY



CREATOR⁺

Check out the all-new Creator+ to explore all our available designs – you can easily design and order online today!



SNIPER JERSEY W/ LACE NECK

PRO **SELECT** CORE

HK-MLS08-SEL

\$82.00

DESCRIPTION

- Modern pro-style jersey with lace neck
- Unique, multi-layer collar with insert
- Double shoulders and elbows
- Reinforced stitching

SIZING:

Men's: S-3XL
Youth: YXS-YXL
Goalie: YGC-AGC

FABRICS:

Airmesh
Flexweave 1.9



SNIPER JERSEY

PRO **SELECT** CORE

HK-MLS07-SEL

\$78.00

DESCRIPTION

- Modern pro-style jersey
- Unique, multi-layer collar with insert
- Double shoulders and elbows
- Reinforced stitching

SIZING:

Men's: S-4XL
Youth: YXS-YXL
Goalie: YGC-AGC

FABRICS:

Airmesh
Flexweave 1.9





HOWITZER LACE JERSEY

PRO **SELECT** CORE

HK-MLS06-SEL

\$78.00

DESCRIPTION

- Select level lace neck hockey jersey
- 5 panel construction
- Double shoulders and elbows
- Reinforced double stitching throughout
- Classic yoke

SIZING:

Men's: S-3XL
Youth: YXS-YXL
Goalie: YGC-AGC

FABRICS:

Airmesh



HOWITZER JERSEY

PRO **SELECT** CORE

HK-MLS05-SEL

\$74.00

DESCRIPTION

- Select level hockey jersey
- 5 panel construction
- Double shoulders and elbows
- Reinforced double stitching throughout
- Classic yoke

SIZING:

Men's: S-3XL
Youth: YXS-YXL
Goalie: YGC-AGC

FABRICS:

Airmesh

NEW

SHIFT SINGLE PLY REVERSIBLE HOCKEY JERSEY

PRO **SELECT** CORE

HK-MLS09-SEL

\$90.00



DESCRIPTION

- Single ply for lightweight and breathability
- Fell seam stitching for clean finish

SIZING:

Men's: S/M, L/XL, 2XL
Youth: YS/YM, YL/YXL
Goalie: YGC-AGC

FABRICS:

Dualwick



CLASSIC PANT/SHELL

PRO **SELECT** CORE

BELT - HK-MPT03-SEL
DRAWSTRING - HK-MPT04-COR

\$54.00
\$48.00

DESCRIPTION

- Fully custom sublimated shell completes uniform look
- Medium weight stretch woven fabric
- Belt closure (Select)
- Drawstring waistband (Core)
- Shell only - no pads/pants included

SIZING:

Men's: S-XL
Youth: YS-YXL

FABRICS:

Calico 2.2 (PLUS)
Proflex (PLUS)
Flexweave 1.9 (CORE)



CLASSIC HOCKEY SOCKS

PRO **SELECT** CORE

HK-MPT03-COR

\$42.00

DESCRIPTION

- Core level hockey sock
- Double layer reinforced knee
- Velcro strips
- Double stitching throughout

SIZING:

Men's: S/M, L/XL, 2XL
Youth: YS/YM, YL/YXL

FABRICS:

Airmesh



NEW

SHIFT SINGLE PLY REVERSIBLE HOCKEY SOCKS

PRO **SELECT** CORE

HK-MSK09-SEL

\$55.00

DESCRIPTION

- Single ply for lightweight and breathability
- Velcro strips
- Fell seam stitching for clean finish

SIZING:

Men's: S/M, L/XL, 2XL
Youth: YS/YM, YL/YXL

FABRICS:

Dualwick



 **DYNAMIC**

LACROSSE & FIELD HOCKEY



CREATOR⁺

Check out the all-new Creator+ to explore all our available designs – you can easily design and order online today!

PRO SERIES

DODGE SHORT SLEEVE JERSEY

PRO SELECT CORE

LX-MSS81-PRO

\$74.00

DESCRIPTION

- Pro/Elite level short sleeve jersey
- Flexweave woven fabric front with Digiperf laser perforations for enhanced ventilation
- Flex Aerofiber mesh back for breathability
- Features a sleek collar design, entire jersey top-stitched for durability & appearance

SIZING:

Men's: XS-5XL

FABRICS:

Flexweave 1.4
Flex Aerofiber



LASER CUT
VENTILATION



PREMIUM
WOVEN



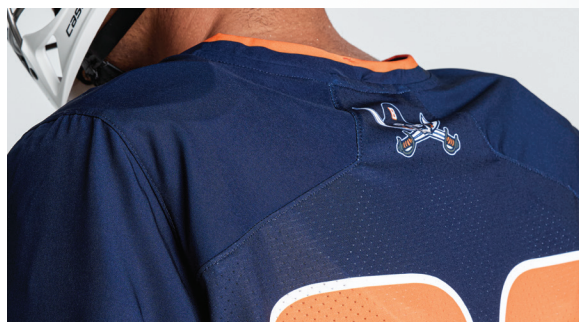
4-WAY
STRETCH



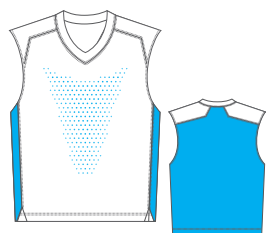
FLEXWEAVE 1.4

DIGIPERF

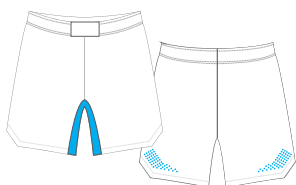
FLEX AEROFIBER



See Shorts
on next page



FLEXWEAVE 1.4
 DIGIPERF
 FLEX AEROFIBER



FLEXWEAVE 1.4
 DIGIPERF
 FLEX AEROFIBER

DODGE SLEEVELESS VEST

PRO SELECT CORE

LX-MSL81-PRO

\$70.00

DESCRIPTION

- Pro/Elite level sleeveless jersey
- Flexweave woven fabric front with Digiperf laser perforations for enhanced ventilation
- Flex Aerofiber mesh back for breathability
- Modern design collar for added flair, entire vest top-stitch for durability & appearance

SIZING:

Men's: S-5XL
Youth: YXS-YXL

FABRICS:

Flexweave 1.4
Flex Aerofiber



LASER CUT
VENTILATION



4-WAY
STRETCH

DODGE SHORTS

PRO SELECT CORE

NEW

5" NO POCKETS - LX-MSH81-PRO5
7" NO POCKETS - LX-MSH81-PRO7
9" NO POCKETS - LX-MSH81-PRO9

\$58.00

NEW

5" W/ POCKETS - LX-MSH82-PRO5
7" W/ POCKETS - LX-MSH82-PRO7
9" W/ POCKETS - LX-MSH82-PRO9

\$64.00

DESCRIPTION

- Pro/Elite level short
- Flexweave woven fabric with Digiperf laser perforations for enhanced ventilation
- Flex Aerofiber inner thigh panel for enhanced breathability
- Waistband plate for additional customization
- Inner lace drawcord

SIZING:

Men's: S-5XL
Youth: YXS-YXL

FABRICS:

Flexweave 1.4
Flex Aerofiber



LASER CUT
VENTILATION



4-WAY
STRETCH



NEW

DIME FT (Select Only) SHORT SLEEVE JERSEY

PRO **SELECT** CORE

SELECT - LX-MSS01-SEL
CORE - LX-MSS01-COR

\$66.00
\$60.00

DESCRIPTION

- Select and Core level jerseys
- Main body with Flex Aerofiber (Select) or Airmesh (Core)
- Flex Durafiber collar
- Moisture wicking, anti-microbial, excellent UPF

SIZING:

Men's: S-5XL
Youth: YXS-YXL

FABRICS:

Flex Aerofiber (Select)
AirMesh (Core)
Flex Durafiber



NEW

DIME FT (Select Only) SLEEVELESS VEST

PRO **SELECT** CORE

SELECT - LX-MSL01-SEL
CORE - LX-MSL01-COR

\$60.00
\$54.00

DESCRIPTION

- Select and Core level sleeveless vests
- Main body with Flex Aerofiber (Select) or Airmesh (Core)
- Flex Durafiber collar
- Moisture wicking, anti-microbial, excellent UPF

SIZING:

Men's: S-5XL
Youth: YXS-YXL

FABRICS:

Flex Aerofiber (Select)
AirMesh (Core)
Flex Durafiber



NEW

DIME FT (Select Only) SHORTS NO POCKETS

PRO **SELECT** CORE

SELECT 5" - LX-MSH01-SEL5
SELECT 7" - LX-MSH01-SEL7
SELECT 9" - LX-MSH01-SEL9

\$48.00

CORE 5" - LX-MSH01-COR5
CORE 7" - LX-MSH01-COR7
CORE 9" - LX-MSH01-COR9

\$43.00

DESCRIPTION

- Select and Core level shorts
- Inner lace drawcord
- Waistband plate for additional customization
- Flex Aerofiber (Select) or Airmesh (Core)
- 5", 7" or 9" inseam

SIZING:

Men's: XS-5XL
Youth: YXS-YXL

FABRICS:

Flex Aerofiber (Select)
AirMesh (Core)



NEW

DIME SHORTS W/ POCKETS

PRO **SELECT** CORE

SELECT 5" - LX-MSHO2-SEL5
SELECT 7" - LX-MSHO2-SEL7
SELECT 9" - LX-MSHO2-SEL9

\$54.00

CORE 5" - LX-MSHO2-COR5
CORE 7" - LX-MSHO2-COR7
CORE 9" - LX-MSHO2-COR9

\$49.00

DESCRIPTION

- Select and Core level shorts
- Same construction as shorts without pockets
- Flex Aerofiber (Select) or Airmesh (Core)
- 5", 7" or 9" inseam

SIZING:

Men's: XS-5XL
Youth: YXS-YXL

FABRICS:

Flex Aerofiber (Select)
AirMesh (Core)



NEW

FIERCE FT SHORT SLEEVE JERSEY

PRO **SELECT** CORE

LX-WSS03-SEL

\$52.00

DESCRIPTION

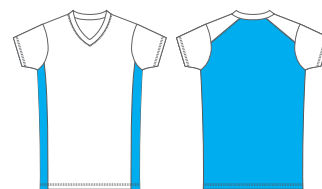
- Select level short sleeve jersey
- Flex dry knitted spandex front and Flex Aerofiber mesh back panel
- Modified v-neck with raglan shoulder

SIZING:

Women's: XS-3XL
Girl's: GXS-GXL

FABRICS:

Flex Dry
Flex Aerofiber



□ FLEXDRY ■ FLEX AEROFIBER



NEW

FIERCE FT SLEEVELESS JERSEY

PRO **SELECT** CORE

LX-WSLO3-SEL

\$48.00

DESCRIPTION

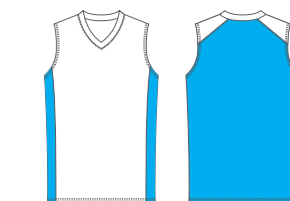
- Select level sleeveless jersey
- Flex dry knitted spandex front and Flex Aerofiber mesh back panel, this jersey offers both flexibility and durability for maximum comfort during gameplay
- Modified v-neck with raglan shoulder

SIZING:

Women's: XS-3XL
Girl's: GXS-GXL

FABRICS:

Flex Dry
Flex Aerofiber



□ FLEXDRY ■ FLEX AEROFIBER



NEW

FIERCE **FT** **SLEEVELESS RACERBACK JERSEY**

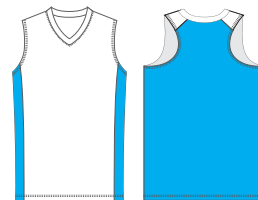
PRO **SELECT** **CORE**

LX-WSLO4-SEL

\$48.00

DESCRIPTION

- Select level sleeveless racerback jersey
- Flex dry knitted spandex front and Flex Aerofiber mesh back panel; this jersey offers both flexibility and durability for maximum comfort during gameplay
- Modified v-neck


☐ FLEXDRY ☒ FLEX AEROFIBER

SIZING:

 Women's: XS-3XL
 Girl's: GXS-GXL

FABRICS:

 Flex Dry
 Flex Aerofiber

FIERCE **FT** (Skirt Only) **SKIRT/SKORT**

PRO **SELECT** **CORE**

SKIRT - LX-WSHO2-SEL

\$44.00

SKORT - LX-WSHO3-SEL

\$52.00

DESCRIPTION

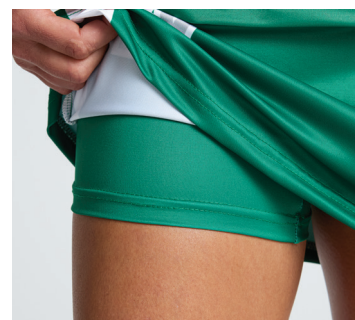
- Crafted from a high-quality medium weight Flexdry spandex
- Elastic waistband ensures a secure and comfortable fit

SIZING:

 Women's: XS-3XL
 Girl's: GXS-GXL

FABRICS:

Flex Dry



NEW

FIERCE **FT** **SHORTS**

PRO **SELECT** **CORE**

LX-WSHO3-SEL5

\$48.00

DESCRIPTION

- Select level short
- Waistband plate for additional customization
- Flex dry knitted spandex
- 5" inseam

SIZING:

 Women's: XS-3XL
 Girl's: GXS-GXL

FABRICS:

Flex Dry



MACH 5

SHORT SLEEVE T-SHIRT (GREAT FOR SHOOTER SHIRTS)

PRO **SELECT** CORE

CREW NECK (DYNALITE) - SF-MSS50-DYN
V-NECK (DYNALITE) - SF-MSS51-DYN

\$27.00

+\$6.00 For Dynapin / +\$10.00 for Ultraflex

**For full list of SKUs see page 117

DESCRIPTION

- Set-in sleeves
- Drop tail design
- Neck taping
- Self material collar

SIZING:

Men's: S-5XL
Women's: S-3XL
Youth: XS-XL

FABRICS:

Dynalite (Core)
Dynapin (Select)
Ultraflex (Select+)



MACH 5

LONG SLEEVE T-SHIRT (GREAT FOR SHOOTER SHIRTS)

PRO **SELECT** CORE

CREW NECK (DYNALITE) - SF-MLS50-DYN
V-NECK (DYNALITE) - SF-MLS51-DYN

\$32.00

+\$6.00 For Dynapin / +\$10.00 for Ultraflex

**For full list of SKUs see page 117

DESCRIPTION

- Set-in sleeves
- Drop tail design
- Neck taping
- Self material collar

SIZING:

Men's: S-5XL
Women's: S-3XL
Youth: XS-XL

FABRICS:

Dynalite (Core)
Dynapin (Select)
Ultraflex (Select+)



NEW

MIDDY

SINGLE PLY SKIRT

PRO **SELECT** CORE

LX-WSH07-SEL

\$55.00

DESCRIPTION

- Select level reversible skirt
- 1-ply reversible for lightweight and breathability
- Constructed from Dualwick

SIZING:

Women's: XS-3XL

FABRICS:

Dualwick



FABRIC DETAIL

NEW

MIDDY SINGLE PLY REVERSIBLE VEST

PRO **SELECT** CORE

MEN'S - LX-MSLO7-SEL

\$55.00

WOMEN'S - LX-WSLO7-SEL

DESCRIPTION

- Select level reversible vest
- 1-ply reversible for lightweight and breathability

SIZING:

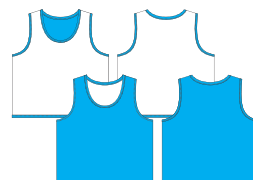
Men's: 2XS/XS, S/M, L/XL, 2/3XL

Women's: 2XS/XS, S/M, L/XL, 2/3XL

FABRICS:

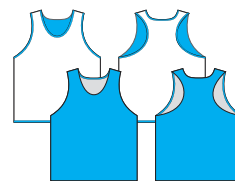
Dualwick

Men's Cut



☐ SIDE A ☒ SIDE B

Women's Cut



☐ SIDE A ☒ SIDE B

NEW

MIDDY SINGLE PLY REVERSIBLE SHORTS

PRO **SELECT** CORE

MEN'S 5" - LX-MSHO7-SEL5

MEN'S 7" - LX-MSHO7-SEL7

MEN'S 9" - LX-MSHO7-SEL9

WOMEN'S 5" - LX-WSHO7-SEL5

\$55.00

DESCRIPTION

- Select level reversible short
- 1-ply reversible for lightweight and breathability

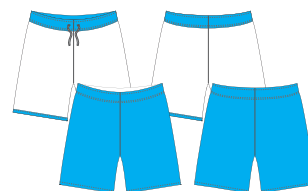
SIZING:

Men's: 2XS/XS, S/M, L/XL, 2/3XL

Women's: 2XS/XS, S/M, L/XL, 2/3XL

FABRICS:

Dualwick



☐ SIDE A ☒ SIDE B



FELL SEAM STITCHING



Women's
Racerback



AXIS

2-PLY REVERSIBLE JERSEY

PRO SELECT **CORE**

MEN'S - LX-MSLO8-COR

\$50.00

WOMEN'S - LX-WSLO8-COR

DESCRIPTION

- Core level reversible vest (women's is racerback cut)
- 2-ply reversible with seam sealed technology
- Constructed from high-quality Dyna Dry a traditional mock mesh fabric

SIZING:

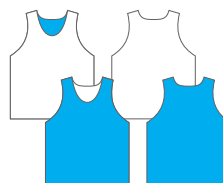
Men's: 2XS/XS, S/M, L/XL, 2/3XL

Women's: 2XS/XS, S/M, L/XL, 2/3XL

FABRICS:

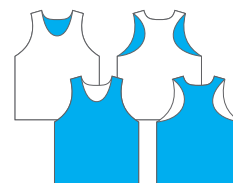
Dyna Dry

Men's Cut



□ SIDE A ■ SIDE B

Women's Cut



□ SIDE A ■ SIDE B

BTB

BOX LACROSSE JERSEY

PRO SELECT **CORE**

LX-MLS10-COR

\$64.00

DESCRIPTION

- Core level box lacrosse jersey
- 5 panel construction
- Double shoulders and elbows
- Reinforced double stitching throughout
- Airmesh fabric
- Classic yoke styling

SIZING:

Men's: S-5XL

Youth: YS-YXL

Goalie: GL-G5XL

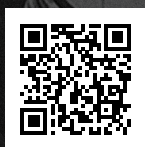
FABRICS:

Airmesh



DYNAMIC

SOCCER



CREATOR+

Check out the all-new Creator+ to explore all our available designs – you can easily design and order online today!



PRO SERIES

NEW

LIGA CREW NECK JERSEY

PRO SELECT CORE

MEN'S - SO-MSS81-PRO
WOMEN'S - SO-WSS81-PRO

\$45.00

DESCRIPTION

- Pro/Elite level short sleeve crew neck jersey
- Lightweight 4-way stretch Ultraflex flat knit front with stretch mesh back for breathability on the field
- Raglan cut for better fit and performance

SIZING:

Men's: XS-5XL
Youth: VXS-YXL
Women's: XS-4XL

FABRICS:

Ultraflex



ULTRAFLEX ULTRAFLEX MESH RIB





NEW

LIGA SHORT

PRO SELECT CORE

MEN'S 5" - SO-MSH81-PRO5

MEN'S 7" - SO-MSH81-PRO7

WOMEN'S 5" - SO-WSH81-PRO5

\$38.00

DESCRIPTION

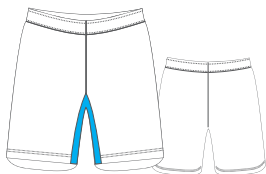
- Pro/Elite level short
- Lightweight Ultraflex fabric
- Men's: 5" & 7" inseam, Women's & Youth: 5" inseam
- Inner lace drawstring

SIZING:

Men's: XS-5XL

Youth: YS-YXL

Women's: XS-4XL



ULTRAFLEX ULTRAFLEX MESH

FABRICS:

Ultraflex

4-WAY
STRETCHPREMIUM
KNIT

NEW

LIGA V-NECK JERSEY

PRO SELECT CORE

MEN'S - SO-MSS82-PRO

WOMEN'S - SO-WSS82-PRO

\$45.00

DESCRIPTION

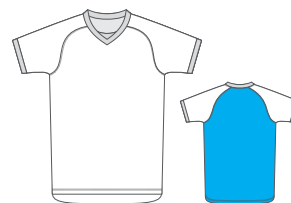
- Pro/Elite level short sleeve v-neck jersey
- Lightweight 4-way stretch Ultraflex flat knit front with stretch mesh back for breathability on the field
- Raglan out for better fit and performance

SIZING:

Men's: XS-5XL

Youth: YXS-YXL

Women's: XS-4XL



ULTRAFLEX ULTRAFLEX MESH
RIB

FABRICS:

Ultraflex

4-WAY
STRETCHPREMIUM
KNIT



NEW

CROSS CREW NECK JERSEY

PRO **SELECT** CORE

WIFFLE MESH

MEN'S - SO-MSS01-SEL

\$39.00

WOMEN'S - SO-WSS01-SEL

DYNALITE

MEN'S - SO-MSS01-COR

\$33.00

WOMEN'S - SO-WSS01-COR

DESCRIPTION

- Select & Core level short sleeve crew neck jersey
- Lightweight Wiffle Mesh or Dynalite fabrics
- Ribbed collar and arm opening

SIZING:

Men's: XS-5XL

Youth: YXS-YXL

Women's: XS-4XL

FABRICS:

Wiffle Mesh (Select)

Dynalite (Core)



NEW

CROSS V-NECK JERSEY

PRO **SELECT** CORE

WIFFLE MESH

MEN'S - SO-MSS02-SEL

\$39.00

WOMEN'S - SO-WSS02-SEL

DYNALITE

MEN'S - SO-MSS02-COR

\$33.00

WOMEN'S - SO-WSS02-COR

DESCRIPTION

- Select & Core level short sleeve v-neck jersey
- Lightweight Wiffle Mesh or Dynalite fabrics
- Ribbed collar and arm opening

SIZING:

Men's: XS-5XL

Youth: YXS-YXL

Women's: XS-4XL

FABRICS:

Wiffle Mesh (Select)

Dynalite (Core)



NEW

CROSS SHORT

PRO SELECT CORE

WIFFLE MESH

MEN'S 5" - SO-MSH01-SEL5

\$39.00

MEN'S 7" - SO-MSH01-SEL7

WOMEN'S 5" - SO-WSH01-SEL5

DYNALITE

MEN'S 5" - SO-MSH01-COR5

\$33.00

MEN'S 7" - SO-MSH01-COR7

WOMEN'S 5" - SO-WSH01-COR5

DESCRIPTION

- Select & Core level short
- Lightweight Wiffle Mesh or Dynalite fabrics
- Men's 5" & 7" inseams & Women's 5" inseams

SIZING:

Men's: S-3XL

Youth: YS-YXL

Women's: XS-4XL

FABRICS:

Wiffle Mesh (Select)

Dynalite (Core)

NEW

CROSS GOALIE JERSEY

PRO SELECT CORE

MEN'S - SO-MLS09-COR

\$45.00

WOMEN'S - SO-WLS09-COR

DESCRIPTION

- Core level long sleeve v-neck jersey
- Lightweight Dynalite fabric
- Ribbed collar and sleeve cuffs for enhanced comfort

SIZING:

Men's: XS-5XL

Youth: YXS-YXL

Women's: XS-4XL

FABRICS:

Dynalite



**REINFORCED
PADDED ELBOWS**





TRACK & FIELD



CREATOR+

Check out the all-new Creator+ to explore all our available designs – you can easily design and order online today!

PROSERIES

SPRINT SINGLET

PRO SELECT CORE

MEN'S - TK-MSL81-PRO
WOMEN'S - TK-WSL81-PRO

\$36.00

DESCRIPTION

- Pro/Elite level sleeveless racerback jersey
- Lightweight Flex Pinstripe spandex fabric for comfort and style
- Flat lock stitching throughout

SIZING:

Men's: XS-5XL
Youth: YS-YXL
Women's: XS-3XL

FABRICS:

Flex Pinstripe

SPRINT SHORT

PRO SELECT CORE

MEN'S - TK-MSH81-PRO2
WOMEN'S - TK-WSH81-PRO2

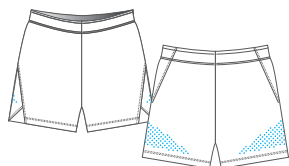
\$44.00

DESCRIPTION

- Pro/Elite level track short
- Digiperf laser ventilation
- Flexweave 1.4 woven spandex fabric
- Loose fit vented leg design for comfort
- Drawstring waistband
- 2" inseam

SIZING:

Men's: S-5XL
Youth: YS-YXL
Women's: XS-3XL



FABRICS:

Flexweave 1.4

 FLEXWEAVE 1.4  DIGIPERF





PACE SINGLET

PRO **SELECT** CORE

ULTRAFLEX FABRIC

MEN'S - TK-MSLO7-SEL

WOMEN'S - TK-WSLO7-SEL

\$37.00

WIFFLE MESH FABRIC

MEN'S - TK-MSLO7-COR

WOMEN'S - TK-WSLO7-COR

\$34.00

DESCRIPTION

- Select and Core level premium running jersey
- Lightweight Wiffle Mesh or Ultraflex flat knit front with stretch mesh back
- Accent flatlock stitching for style and durability

SIZING:

Men's: XS-5XL

Youth: YS-YXL

Women's: XS-3XL

FABRICS:

Ultraflex (Select)

Wiffle Mesh (Core)



MILER ⁵ SHORT

PRO **SELECT** CORE

MEN'S - TK-MSHO2-SEL2

WOMEN'S - TK-WSHO2-SEL2

\$40.00

DESCRIPTION

- Select level track short
- Flexweave woven spandex fabric
- Loose fit leg design for comfort
- Drawstring waistband
- 2" inseam

SIZING:

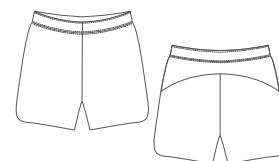
Men's: S-5XL

Youth: YS-YXL

Women's: XS-3XL

FABRICS:

Flexweave 1.4



FLEXWEAVE 1.4



POWER ⁵ RUNNING SINGLET

PRO SELECT **CORE**

MEN'S - TK-MSLO1-COR
WOMEN'S - TK-WSLO1-COR

\$26.00

DESCRIPTION

- Core level traditional running singlet
- Lightweight interlock fabric construction
- Comfortable and breathable

SIZING:

Men's: S-5XL
Youth: YS-YXL
Women's: XS-3XL

FABRICS:

Dynalite



QUEST ⁵ COMPRESSION SHORTS

PRO **SELECT** CORE

MEN'S - FF-MSHO2-SEL
WOMEN'S - FF-WSHO2-SEL

\$44.00

DESCRIPTION

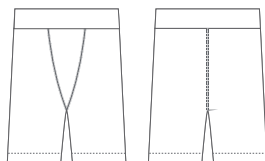
- Select level compression short
- Flex Stretch fabric
- Moisture wicking fabric for moisture management
- Accent flatlock stitching
- Men's feature extended length design
- Variable inseam

SIZING:

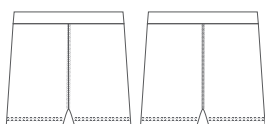
Men's: XS-5XL
Youth: YS-YXL
Women's: XS-3XL
Girl's: GS-GXL

FABRICS:

Flex Stretch



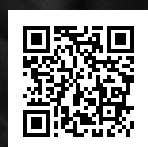
MEN'S LENGTH



WOMEN'S LENGTH



VOLLEYBALL



CREATOR+

Check out the all-new Creator+ to explore all our available designs – you can easily design and order online today!

PRO SERIES

NEW

ACE LONG SLEEVE JERSEY

PRO SELECT CORE

VB-WLS81-PRO

\$56.00

DESCRIPTION

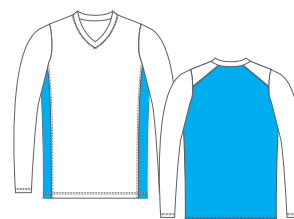
- Elite/Pro-Level long sleeve jersey
- Flex Dry spandex fabric front
- Flex Aerofiber spandex mesh back for enhanced ventilation
- Excellent range of motion & pick resistance
- Raglan cut for better fit and performance

SIZING:

Women's: XS-3XL

FABRICS:

Flex Dry
Flex Aerofiber



□ FLEX DRY ■ FLEX AEROFIBER





NEW

ACE SHORT SLEEVE JERSEY

PRO SELECT CORE

VB-WSS81-PRO

\$52.00

DESCRIPTION

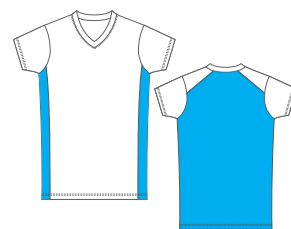
- Elite/Pro-Level short sleeve jersey
- Flex Dry spandex fabric front
- Flex Aerofiber spandex mesh back for enhanced ventilation
- Excellent range of motion
- Raglan cut for better fit

SIZING:

Women's: XS-3XL
Girl's: GXS-GXL

FABRICS:

Flex Dry
Flex Aerofiber



☐ FLEX DRY ☒ FLEX AEROFIBER



NEW

ACE SLEEVELESS JERSEY

PRO SELECT CORE

VB-WSL81-PRO

\$48.00

DESCRIPTION

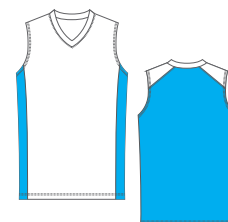
- Elite/Pro-Level sleeveless jersey
- Flex Dry spandex fabric front
- Flex Aerofiber spandex mesh back for enhanced ventilation
- Excellent range of motion
- Raglan cut for better fit

SIZING:

Women's: XS-3XL
Girl's: GXS-GXL

FABRICS:

Flex Dry
Flex Aerofiber



☐ FLEX DRY ☒ FLEX AEROFIBER



PONTO

VOLLEYBALL SHORT

PRO **SELECT** CORE

STANDARD - VB-WSHO1-SEL3
LONG - VB-WSHO1-SEL7

\$38.00
\$44.00

DESCRIPTION

- Select level short
- Compression fit with 3" or 7" inseam
- Flex Stretch heavyweight compression spandex fabric
- Comfortable and durable
- Fully sublimated

SIZING:

Women's: XS-3XL
Girl's: GXS-GXL

FABRICS:

Flexstretch



NEW

HYBRID

VOLLEYBALL SHORT

PRO **SELECT** CORE

STANDARD - VB-WSHO2-SEL3
LONG - VB-WSHO2-SEL7

\$38.00
\$44.00

DESCRIPTION

- Select level short
- Compression fit with 3" or 7" inseam
- Flex Stretch heavyweight compression spandex fabric
- Comfortable and durable
- Nylon pre-dyed base fabric with sublimated side inserts

SIZING:

Women's: XS-3XL
Girl's: GXS-GXL

FABRICS:

Nylon
Flexstretch

Available Base Colors



 PRE-DYED NYLON  SUBLIMATED INSERT



MACH 5 ⁵ SLEEVELESS CREW NECK T-SHIRT

PRO **SELECT** CORE

DYNALITE - SF-MSL50-DYN

\$26.00

+\$6.00 For Dynapin / +\$10.00 for Ultraflex

**For full list of SKUs see page 117

DESCRIPTION

- Sleeveless t-shirt
- Drop tail design
- Neck taping
- Self material collar

SIZING:

Men's: S-4XL
Women's: S-3XL
Youth: XS-XL

FABRICS:

Dynalite (Core)
Dynapin (Select)
Ultraflex (Select+)

MACH 5 ⁵ SHORT

PRO **SELECT** CORE

5" MEN'S (Dynalite) - SF-MSH55-DYN5

7" MEN'S (Dynalite) - SF-MSH53-DYN7

9" MEN'S (Dynalite) - SF-MSH51-DYN9

3" WOMEN'S (Dynalite) - SF-WSH55-DYN3

5" WOMEN'S (Dynalite) - SF-WSH53-DYN5

7" WOMEN'S (Dynalite) - SF-WSH51-DYN7

\$30.00

NEW

+\$6.00 For Dynapin / +\$10.00 for Ultraflex

**For full list of SKUs see page 117

DESCRIPTION

- Lace Drawcord
- Cover hemmed leg openings
- 5", 7", 9" (Men's) and 3", 5", 7" (Women's) inseams

SIZING:

Men's: S-4XL
Women's: S-3XL
Youth: XS-XL

FABRICS:

Dynalite (Core)
Dynapin (Select)
Ultraflex (Select+)



MACH 5

SHORT SLEEVE T-SHIRT

PRO **SELECT** CORE

CREW NECK (DYNALITE) - SF-MSS50-DYN
V-NECK (DYNALITE) - SF-MSS51-DYN

\$27.00

+\$6.00 For Dynapin / +\$10.00 for Ultraflex

**For full list of SKUs see page 117

DESCRIPTION

- Set-in sleeves
- Drop tail design
- Neck taping
- Self material collar

SIZING:

Men's: S-4XL
Women's: S-3XL
Youth: XS-XL

FABRICS:

Dynalite (Core)
Dynapin (Select)
Ultraflex (Select+)



MACH 5

LONG SLEEVE T-SHIRT

PRO **SELECT** CORE

CREW NECK - SF-MLS50-DYN
V-NECK - SF-MLS51-DYN

\$32.00

+\$6.00 For Dynapin / +\$10.00 for Ultraflex

**For full list of SKUs see page 117

DESCRIPTION

- Set-in sleeves
- Drop tail design
- Neck taping
- Self material collar

SIZING:

Men's: S-4XL
Women's: S-3XL
Youth: XS-XL

FABRICS:

Dynalite (Core)
Dynapin (Select)
Ultraflex (Select+)



NEW

MACH 5

SLEEVELESS RACERBACK V-NECK T-SHIRT

PRO **SELECT** CORE

DYNALITE - SF-WSL53-DYN

\$26.00

+\$6.00 For Dynapin / +\$10.00 for Ultraflex

**For full list of SKUs see page 117

DESCRIPTION

- Drop tail design
- Neck taping
- Self material collar
- Racerback design

SIZING:

Women's: S-3XL
Girl's: XS-XL

FABRICS:

Dynalite (Core)
Dynapin (Select)
Ultraflex (Select+)



WRESTLING



CREATOR+

Check out the all-new Creator+ to explore all our available designs – you can easily design and order online today!



INTEGRITY SINGLET

PRO **SELECT** CORE

WITHOUT SILICONE LEG BAND

MEN'S - WR-MSLO1-SEL

WOMEN'S - WR-WSLO1-SEL

\$59.00

WITH SILICONE LEG BAND

MEN'S - WR-MSLO2-SEL

WOMEN'S - WR-WSLO2-SEL

\$63.00

DESCRIPTION

- Heavyweight spandex fabric for performance/durability
- 2 panel construction
- Double overlook stitching
- Binding trim on arm and neck openings

SIZING:

Men's: S-4XL
Youth: YXS-YXL
Women's: XS-5XL

FABRICS:

Flex Stretch



Silicone Leg Band Detail



TAKEDOWN SLEEVELESS COMPRESSION JERSEY

PRO **SELECT** CORE

WR-MSLO4-SEL

\$44.00

DESCRIPTION

- Select level sleeveless jersey
- Extended length tail (back)
- Flex Compression 2.2 spandex fabric
- Reinforced seams
- Excellent range of motion and moisture management

SIZING:

Men's: XS-5XL
Youth: YXS-YXL

FABRICS:

Flex Compression 2.2



TAKEDOWN SHORT SLEEVE COMPRESSION JERSEY

PRO **SELECT** CORE

MEN'S - WR-MSS05-SEL

WOMEN'S - WR-WSS05-SEL

\$48.00

DESCRIPTION

- Select level compression short sleeve raglan crew neck shirt
- Extended length tail (back)
- 4 panel construction
- Flex Compression 2.2 spandex fabric
- Reinforced seams
- Excellent range of motion and moisture management

SIZING:

Men's: XS-5XL
Youth: YXS-YXL
Women's: 2XS-3XL

FABRICS:

Flex Compression 2.2



KNOCKOUT MMA STYLE WOVEN SHORT

PRO **SELECT** CORE

WR-MSHO1-SEL9

\$54.00

DESCRIPTION

- Select level premium MMA short
- Flexweave 1.9 spandex woven fabric for comfort and durability
- Reinforced flat lock stitching strengthens stress points
- Waistband plate for additional customization
- Men's 9" inseam / Youth 7" inseam

SIZING:

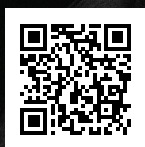
Men's: S-3XL
Youth: Y2XS-YXL

FABRICS:

Flex Weave 1.9
Flex Durafiber

 **DYNAMIC**

RUGBY



CREATOR⁺

Check out the all-new Creator+ to explore all our available designs – you can easily design and order online today!



PRO SERIES

BIONIC SHORT SLEEVE JERSEY

PRO **SELECT** **CORE**

MEN'S - RU-MSS81-PRO

WOMEN'S - RU-WSS81-PRO

\$56.00

DESCRIPTION

- Pro/Elite level compression fit jersey
- V-neck collar style
- Heavyweight spandex fabric for flexibility/durability
- Reinforced seams and collar
- Raglan sleeve for better fit

SIZING:

Men's: XS-5XL

Youth: YXS-YXL

Women's: XS-3XL

FABRICS:

Flex Durafiber





RUCK SHORT SLEEVE JERSEY

PRO **SELECT** CORE

RU-MSS02-SEL

\$53.00

DESCRIPTION

- Select level short sleeve v-neck jersey
- V-neck collar style
- Heavyweight Proknit 2.7 fabric for durability
- Reinforced seams and collar
- Raglan sleeve for better fit

SIZING:

Men's: XS-5XL
Youth: YXS-YXL
Women's: XS-3XL

FABRICS:

Proknit 2.7



HAKA SHORT WITH ANTI-SLIP

PRO **SELECT** CORE

MEN'S - RU-MSHO1-SEL

WOMEN'S - RU-WSHO1-SEL

\$46.00

DESCRIPTION

- Select level short
- Silicone anti-slip draw-string waistband
- Heavyweight twill body for strength
- Spandex crotch for added comfort
- Excellent range of motion
- Graduated inseams

SIZING:

Men's: XS-5XL
Youth: YXS-YXL
Women's: XS-3XL

FABRICS:

Calico 2.2
Flex Durafiber



DYNAMIC

CHEER



CREATOR+

Check out the all-new Creator+ to explore all our available designs – you can easily design and order online today!



CHANT LONG SLEEVE V-NECK

PRO **SELECT** CORE

CH-WLS04-SEL

\$46.00

DESCRIPTION

- Select level long sleeve v-neck jersey
- Excellent range of motion & pick resistance
- Tapered fit

SIZING:

Women's: XS-4XL
Girl's: GXS-GXL

FABRICS:

Flex Stretch

CHANT STRAIGHT SKIRT

PRO **SELECT** CORE

CH-WSH04-SEL

\$42.00

DESCRIPTION

- Select level skirt
- Classic straight cut that offers a clean and professional look

SIZING:

Women's: XS-2XL
Girl's: GXS-GXL

FABRICS:

Flex Stretch



CHANT LONG SLEEVE CREW NECK

PRO **SELECT** CORE

CH-WLS01-SEL

\$46.00

DESCRIPTION

- Select level long sleeve crew neck jersey
- Excellent range of motion & pick resistance
- Tapered fit

SIZING:

Women's: XS-4XL
Girl's: GXS-GXL

FABRICS:

Flex Stretch



CHANT LONG SLEEVE V-NECK CROP TOP

PRO **SELECT** CORE

CH-WLS02-SEL

\$44.00

DESCRIPTION

- Select level long sleeve crop top
- Crop profile offers a trendy, athletic look while ensuring full range of motion
- Classic v-neck design

SIZING:

Women's: 2XS-4XL
Girl's: GXS-GL

FABRICS:

Flex Stretch



CHANT FLUTTER SKIRT

PRO **SELECT** CORE

CH-WSH03-SEL

\$48.00

DESCRIPTION

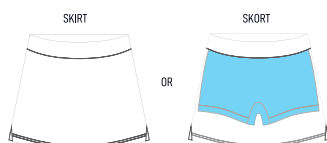
- Select level skirt
- Flared silhouette that adds a touch of elegance

SIZING:

Women's: XS-4XL
Girl's: GXS-GXL

FABRICS:

Flex Stretch



☐ FLEXDRY
 ☒ HIDDEN SHORT

NEW

FIERCE SKORT

PRO **SELECT** CORE

LX-WSH03-SEL

\$52.00

DESCRIPTION

- Crafted from a high-quality medium weight Flexdry spandex
- Elastic waistband ensures a secure and comfortable fit

SIZING:

Women's: XS-2XL
Girl's: GXS-GXL

FABRICS:

Flex Dry



CHANT BUTTERFLY SHORTS

PRO **SELECT** CORE

CH-WSH02-SEL

\$52.00

DESCRIPTION

- Select level short
- Butterfly profile provides a stylish look while offering maximum range of motion
- Loose fit leg design for comfort

SIZING:

Women's: XS-4XL
Girl's: GXS-GXL

FABRICS:

Flexweave 1.4



QUEST COMPRESSION SHORTS

PRO **SELECT** CORE

FF-WSH02-SEL

\$44.00

DESCRIPTION

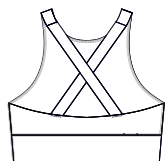
- Select level compression short
- Flex Stretch fabric
- Moisture wicking fabric for moisture management
- Accent flatlock stitching
- Men's feature extended length design
- Variable inseam

SIZING:

Women's: XS-4XL
Girl's: GXS-GXL

FABRICS:

Flex Stretch



BACK DETAIL

FLYER HIGH NECK SPORTS BRA

PRO **SELECT** CORE

CH-WSLO1-SEL

\$58.00

DESCRIPTION

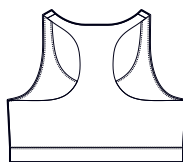
- Select level bra top
- High neck design offers superior coverage and a contemporary athletic look
- Excellent range of motion and moisture management

SIZING:

Women's: XS-4XL
Girl's: GXS-GXL

FABRICS:

Flex Stretch
Dynalite



BACK DETAIL

FLYER LOW NECK SPORTS BRA

PRO **SELECT** CORE

CH-WSLO2-SEL

\$52.00

DESCRIPTION

- Select level bra top
- Accentuates neckline and offers a stylish, confident look
- Excellent range of motion and moisture management

SIZING:

Women's: XS-4XL
Girl's: GXS-GXL

FABRICS:

Flex Dry

BAJA WARM-UP JOGGER

PRO **SELECT** CORE

CH-WPO1-SEL

\$68.00

DESCRIPTION

- Select level jogger
- Ribbed cuffs at the ankles for a secure fit

SIZING:

Women's: XS-4XL
Girl's: GXS-GXL

FABRICS:

Flex Stretch





CHANT LONG SLEEVE CREW NECK

PRO **SELECT** CORE

CH-MLSO1-SEL

\$46.00

DESCRIPTION

- Select level long sleeve jersey
- Traditional crew neck profile
- Excellent durability and range of motion
- Excellent breathability

SIZING:

Men's: S-5XL
Youth: YXS-YXL

FABRICS:

Flex Stretch

Crew Neck



V-Neck



CHANT SHORT SLEEVE SHIRT

PRO **SELECT** CORE

V-NECK - CH-MSSO2-SEL

\$41.00

CREW NECK - CH-MSSO1-SEL

\$41.00

DESCRIPTION

- Select level short sleeve jersey
- Traditional v-neck or crew neck profiles
- Excellent durability and range of motion
- Excellent breathability

SIZING:

Men's: S-5XL
Youth: YXS-YXL

FABRICS:

Flex Stretch

BAJA PANT

PRO **SELECT** CORE

CH-MPTO1-SEL

\$70.00

DESCRIPTION

- Select level pant
- Traditional straight out pants made from heavyweight spandex fabric
- Elastic Waistband and drawstring closure

SIZING:

Men's: S-4XL
Youth: YXS-YXL

FABRICS:

Flex Stretch





 **DYNAMIC**

CYCLING



CREATOR+

Check out the all-new Creator+ to explore all our available designs – you can easily design and order online today!



Full Zip



Back Pockets



WEEKENDER CYCLING JERSEY

PRO SELECT **CORE**

MEN'S - CY-MSS01-COR **\$54.00**

WOMEN'S - CY-WSS01-COR

DESCRIPTION

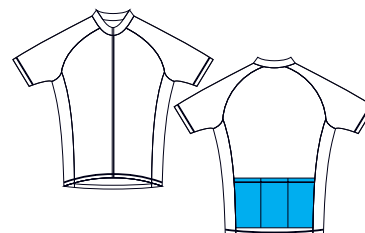
- Core level short sleeve, hidden zip jersey
- Micromesh fabric is lightweight, comfortable, and highly breathable
- 3 pocket back design
- Moisture wicking, anti-microbial, excellent UPF

SIZING:

Men's: XS-5XL
Youth: YXS-YXL
Women's: XS-3XL

FABRICS:

Dyna Dry



 POCKETS

BMX LONG SLEEVE BIKE JERSEY

PRO **SELECT** CORE

CY-MLS05-SEL **\$60.00**

DESCRIPTION

- Select level v-neck jersey
- Extended length tail
- Silicone anti-slip band around bottom, keeps shirt tucked
- Spandex mesh side inserts for comfort and breathability
- Moisture wicking, anti-microbial, excellent UPF

SIZING:

Men's: S-5XL
Youth: YXS-YXL

FABRICS:

Dynalite
Flex Mesh 2.0

A black and white photograph of two men standing in front of a chain-link fence. Both are wearing white hoodies with a large, stylized 'D' logo on the chest. The man on the left is looking down, while the man on the right is smiling.

 **DYNAMIC**

SIDELINE



CREATOR⁺

Check out the all-new Creator+ to explore all our available designs – you can easily design and order online today!

MACH5

5 DAY PROGRAM

ESSENTIALS. FAST. ON-TIME.



SHIPS 5 DAYS
FROM APPROVAL

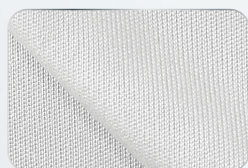


BUILD
ONLINE



ADD YOUR TEAM
COLORS AND LOGOS

THE FABRICS



DYNALITE

145 GSM / 100% Polyester



DYNAPIN

180 GSM / 100% Polyester



ULTRAFLEX

Front: 160 GSM / 15% Spandex
Back: 160 GSM / 10% Spandex



Crew Neck



V-Neck



MACH 5 ⁵

SHORT SLEEVE

PRO SELECT CORE

CREW NECK (DYNALITE) \$27.00
SF-MSS50-DYN

V-NECK (DYNALITE) \$27.00
SF-MSS51-DYN

+\$6.00 For Dynapin / +\$10.00 for Ultraflex

****For full list of SKUs see page 117**

DESCRIPTION

- Set-in short sleeves
- Drop tail design
- Neck taping
- Self material collar

SIZING:

Men's: S-5XL

Women's: S-3XL

Youth: XS-XL

FABRICS:

Dynalite (Core)

Dynapin (Select)

Ultraflex (Select+)

Crew Neck



V-Neck



MACH 5 ⁵

LONG SLEEVE

PRO SELECT CORE

CREW NECK (DYNALITE) \$32.00
SF-MLS50-DYN

V-NECK (DYNALITE) \$32.00
SF-MLS51-DYN

+\$6.00 For Dynapin / +\$10.00 for Ultraflex

****For full list of SKUs see page 117**

DESCRIPTION

- Set-in long sleeves
- Drop tail design
- Neck taping
- Self material collar

SIZING:

Men's: S-5XL

Women's: S-3XL

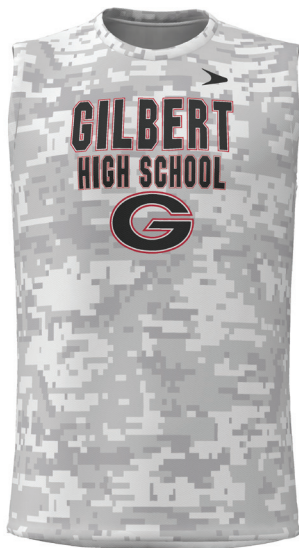
Youth: XS-XL

FABRICS:

Dynalite (Core)

Dynapin (Select)

Ultraflex (Select+)



MACH 5

SLEEVELESS CREW NECK

PRO **SELECT** CORE

DYNALITE - SF-MSL50-DYN

\$26.00

+\$6.00 For Dynapin / +\$10.00 for Ultraflex

**For full list of SKUs see page 117

DESCRIPTION	SIZING:	FABRICS:
• Sleeveless	Men's: S-5XL	Dynalite (Core)
• Drop tail design	Women's: S-3XL	Dynapin (Select)
• Neck taping	Youth: XS-XL	Ultraflex (Select+)
• Self material collar		

NEW

MACH 5

SLEEVELESS RACERBACK V-NECK T-SHIRT

PRO **SELECT** CORE

DYNALITE - SF-WSL53-DYN

\$26.00

+\$6.00 For Dynapin / +\$10.00 for Ultraflex

**For full list of SKUs see page 117

DESCRIPTION	SIZING:	FABRICS:
• Drop tail design	Women's: S-3XL	Dynalite (Core)
• Neck taping	Girl's: XS-XL	Dynapin (Select)
• Self material collar		Ultraflex (Select+)
• Racerback sleeveless design		



MACH 5

SHORTS WITH & WITHOUT POCKETS

PRO **SELECT** CORE

NO POCKETS 7" INSEAM (DYNALITE)
SF-MSH53-DYN7

\$30.00

W/ POCKETS 7" INSEAM (DYNALITE)
SF-MSH54-DYN7

\$36.00

+\$6.00 For Dynapin / +\$10.00 for Ultraflex

**For full list of SKUs see page 117

DESCRIPTION	SIZING:	FABRICS:
• Lace Drawcord	Men's: S-4XL	Dynalite (Core)
• Cover hemmed leg openings	Women's: S-3XL	Dynapin (Select)
	Youth: XS-XL	Ultraflex (Select+)
• 5", 7" & 9" Men's, 3", 5" & 7" Women's inseams		





MACH 5 ⁵ SLEEVELESS HOODED T-SHIRT

PRO **SELECT** CORE

DYNALITE - SF-MSL52-DYN

\$34.00

+\$6.00 For Dynapin / +\$10.00 for Ultraflex

**For full list of SKUs see page 117

DESCRIPTION

- Select & Core level hooded t-shirt
- Dynalite, Dynapin or Ultraflex flat knit front and stretch mesh back fabric options

SIZING:

Men's: S-5XL
Women's: S-3XL
Youth: YXS-YXL

FABRICS:

Dynalite (Core)
Dynapin (Select)
Ultraflex (Select+)



MACH 5 ⁵ SHORT SLEEVE HOODED T-SHIRT

PRO **SELECT** CORE

DYNALITE - SF-MSS52-DYN

\$35.00

+\$6.00 For Dynapin / +\$10.00 for Ultraflex

**For full list of SKUs see page 117

DESCRIPTION

- Select & Core level hooded t-shirt
- Dynalite, Dynapin or Ultraflex flat knit front and stretch mesh back fabric options
- Set-in short sleeves

SIZING:

Men's: S-5XL
Women's: S-3XL
Youth: YXS-YXL

FABRICS:

Dynalite (Core)
Dynapin (Select)
Ultraflex (Select+)



MACH 5

LONG SLEEVE HOODED T-SHIRT

PRO **SELECT** CORE

DYNALITE - SF-MLS52-DYN

\$40.00

+\$6.00 For Dynapin / +\$10.00 for Ultraflex

**For full list of SKUs see page 117

DESCRIPTION

- Select & Core level hooded t-shirt
- Dynalite, Dynapin or Ultraflex flat knit front and stretch mesh back fabric options
- Set-in long sleeves

SIZING:

Men's: S-5XL
Women's: S-3XL
Youth: YXS-YXL

FABRICS:

Dynalite (Core)
Dynapin (Select)
Ultraflex (Select+)



TRUE

PULLOVER HOODIE

PRO **SELECT** CORE

FLEX DURAFIBER

MEN'S - SF-MLS05-SEL

WOMEN'S - SF-WLS05-SEL

\$76.00

PRIME FLEECE

MEN'S - SF-MLS06-SEL

WOMEN'S - SF-WLS06-SEL

\$72.00

DESCRIPTION

- Heavyweight Flex Durafiber or Prime Fleece
- Adjustable drawstring neck (Adult sizes only)
- Large center pocket
- Self-material cuffs & waist

SIZING:

Men's: S-5XL
Youth: YXS-YXL
Women's: XS-4XL

FABRICS:

Flex Durafiber
Prime Fleece





TREND FLEX WARM UP JACKET

PRO **SELECT** CORE

MEN'S - SF-MLS20-SEL
WOMEN'S - SF-WLS20-SEL

\$80.00

DESCRIPTION

- Traditional full zip warm up jacket
- Zipper neck garage, side pockets & self-material cuffs
- Heavyweight fabric with outstanding durability and stretch.

SIZING:

Men's: S-3XL
Youth: YXS-YXL
Women's: XS-3XL

FABRICS:

Flex Durafiber



TREND FLEX WARM UP PANTS

PRO **SELECT** CORE

MEN'S - SF-MPT20-SEL
WOMEN'S - SF-WPT20-SEL

\$66.00

DESCRIPTION

- Traditional styled warm up pant with pockets
- Heavyweight Flex Durafiber fabric with outstanding durability and stretch

SIZING:

Men's: S-4XL
Youth: YXS-YXL
Women's: XS-3XL

FABRICS:

Flex Durafiber



BOLD WOVEN WARM UP JACKET

PRO **SELECT** CORE

MEN'S - SF-MLS22-SEL
WOMEN'S - SF-WLS22-SEL

\$90.00

DESCRIPTION

- Traditional full zip warm up jacket
- Mesh liner for enhanced moisture management
- Zipper neck garage, side pockets & self-material cuffs
- Lightweight woven fabric with smooth finish
- Comfortable with full range of motion

SIZING:

Men's: XS-3XL
Women's: XS-2XL

FABRICS:

Flexweave 1.9
Feathermesh liner

BOLD WOVEN WARM UP PANT

PRO **SELECT** CORE

MEN'S - SF-MPT21-SEL
WOMEN'S - SF-WPT21-SEL

\$76.00

DESCRIPTION

- Traditional style warm up pant with pockets
- Flexweave lightweight woven fabric with smooth finish and excellent drape

SIZING:

Men's: S-4XL
Youth: YXS-YXL
Women's: XS-3XL

FABRICS:

Flexweave 1.9



COMPETITION TAPERED JACKET

PRO **SELECT** CORE

LINED - SF-WLS25-SEL	\$88.00
UNLINED - SF-WLS24-SEL	\$76.00

DESCRIPTION

- Sleek yoga inspired design
- Available with or without the mesh liner for enhanced moisture management
- Flattering tapered full zip design
- Flat lock stitching throughout
- Flex Durafiber fabric for comfort and style

SIZING:

Women's: XS-3XL
Girl's: G2XS-GXL

FABRICS:

Flex Durafiber
Feathermesh liner



COMPETITION LEGGINGS

PRO **SELECT** CORE

FULL LENGTH - SF-WPT25-SEL	\$48.00
7/8 LENGTH - SF-WPT24-SEL	

DESCRIPTION

- Sleek yoga inspired design
- Constructed from pre-dyed black nylon
- Custom sublimation on side insert
- Flat lock stitching

SIZING:

Women's: S-3XL
Girls: G2XS-GXL

FABRICS:

Flex Compression 2.2
Nylon (Black)



APEX SOFTSHELL JACKET

PRO **SELECT** CORE

MESH LINER

MEN'S - SF-MLS30-SEL

\$104.00

WOMEN'S - SF-WLS30-SEL

POLAR FLEECE LINER

MEN'S - SF-MLS31-SEL

\$106.00

WOMEN'S - SF-WLS31-SEL

DESCRIPTION

- Select level classic bomber design
- Mesh or fleece liner for enhanced comfort
- Heavyweight Flex Softshell spandex woven wind and water resistant softshell fabric
- Full length zipper

SIZING:

Men's: S-6XL

Youth: YXS-YXL

Women's: XS-4XL

FABRICS:

Flex Softshell

Feathermesh Liner

Fleece Liner



NEW

LEGACY QUILTED JACKET

PRO **SELECT** CORE

MEN'S - SF-MLS32-SEL

\$110.00

DESCRIPTION

- Select level classic collegiate style jacket
- Quilted poly inner liner
- Heavyweight Flex Softshell spandex woven wind and water resistant

SIZING:

Men's: S-8XL

Youth: YXS-YXL

FABRICS:

Flex Softshell

Proflex

Poly Liner



Liner Detail



NEW

PRIME POLO SHIRT

PRO **SELECT** CORE

SHORT SLEEVE

MEN'S - SF-MSS09-SEL
WOMEN'S - SF-WSS09-SEL

\$57.00

LONG SLEEVE

MEN'S - SF-MLS09-SEL
WOMEN'S - SF-WLS09-SEL

\$61.00

DESCRIPTION

- Traditional short or long sleeve 3-button polo
- 4-panel construction with overlook stitching
- Reinforced self-collar
- Modern lightweight fabric

SIZING:

Men's: S-5XL
Youth: YXS-YXL
Women's: XS-4XL
Girl's: GS-GL

FABRICS:

Ultraflex



NEW

PRIME 1/4 ZIP

PRO **SELECT** CORE

SHORT SLEEVE

MEN'S - SF-MSS08-SEL
WOMEN'S - SF-WSS08-SEL

\$54.00

LONG SLEEVE

MEN'S - SF-MLS08-SEL
WOMEN'S - SF-WLS08-SEL

\$61.00

DESCRIPTION

- Traditional long or short sleeve 1/4 zip pullover
- Self-material cuffs
- Raglan cut profile for enhanced comfort
- Modern lightweight fabric

SIZING:

Men's: S-5XL
Youth: YXS-YXL
Women's: XS-4XL
Girl's: GS-GL

FABRICS:

Ultraflex



FULL BUTTON SHORT SLEEVE DRESS SHIRT

PRO **SELECT** CORE

MEN'S - SF-MSS35-SEL
WOMEN'S - SF-WSS35-SEL

\$64.00

DESCRIPTION

- Select level short sleeve full button dress shirt
- 4-panel construction with elegant needle point stitching
- Reinforced self-collar
- 4-way stretch fabric for comfort and durability

SIZING:

Men's: S-5XL
Women's: XS-3XL
Youth: YXS-YXL

FABRICS:

Flexweave 1.4



FULL BUTTON LONG SLEEVE DRESS SHIRT

PRO **SELECT** CORE

MEN'S - SF-MLS35-SEL
WOMEN'S - SF-WLS35-SEL

\$74.00

DESCRIPTION

- Select level long sleeve full button dress shirt
- 4-panel construction with elegant needle point stitching
- Reinforced self-collar
- 4-way stretch fabric for comfort and durability

SIZING:

Men's: S-5XL
Women's: XS-3XL
Youth: YXS-YXL

FABRICS:

Flexweave 1.4



NEW

BASE COMPRESSION SHIRT

PRO

SELECT

CORE

LONG SLEEVE

MEN'S - SF-MLS07-SEL

\$48.00

WOMEN'S - SF-WLS07-SEL

SHORT SLEEVE

MEN'S - SF-MSS07-SEL

\$44.00

WOMEN'S - SF-WSS07-SEL

SLEEVELESS

MEN'S - SF-MSL07-SE

\$40.00

DESCRIPTION

- Modern 4-panel design and reinforced seams
- Compression spandex body
- Mesh back panel
- Accent flat lock stitching

SIZING:

Men's: XS-4XL

Youth: YXS-YXL

Women's: SM-2XL

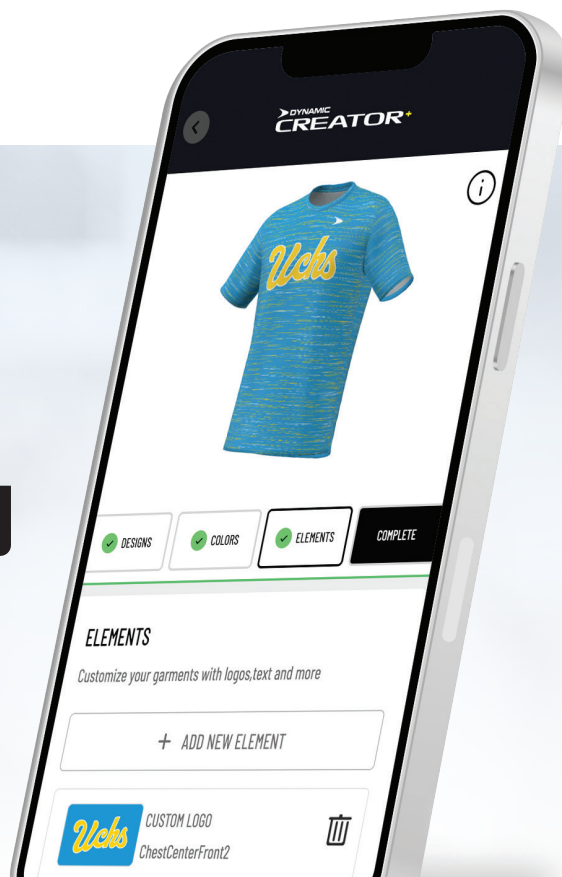
FABRICS:

Flex Compression 2.2

Flex Aerofiber

TO SEE ALL OF OUR
DESIGN OPTIONS
VISIT THE CREATOR+
TO BUILD YOUR OWN

builder.dynamicteamsports.com





ACCESSORIES

PERFORMANCE ARM SLEEVES (PAIR)

PRO **SELECT** CORE

SF-UAC01-SEL

\$24.00

DESCRIPTION

- Benefits of increased circulation, warmth and UV protection
- Compression spandex, both stylish and functional
- Excellent moisture management
- Reinforced seams & tapered design
- Compression spandex - one size fits most

SIZING: Men's: S/M, L/XL, 2XL
Youth: YS/YM, YL/YXL

FABRICS: Flex Compression 2.2



NEW

TABLE COVER

PRO **SELECT** CORE

6 FT - SF-UAC02-COR

\$140.00

8 FT - SF-UAC03-COR

\$160.00

DESCRIPTION

- 6 or 8 foot sublimated tablecloth
- Timekeeper/Scorer/Registration tables
- High stretch fabric for proper fit

FABRICS:

Dynalite



BLANKET

PRO SELECT **CORE**

50" x 60" - SF-UAC05-COR

\$68.00

60" x 80" - SF-UAC06-COR

\$108.00

DESCRIPTION

- Multi-purpose sublimated blanket - games - outdoor functions
- Pro Knit 2.7 Interlock sublimated front with soft and cozy fleece back

FABRICS:

Pro Knit 2.7

Fleece Liner



HEADBAND

PRO **SELECT** CORE

SF-UAC10-SEL

\$10.00

DESCRIPTION

- Compression spandex - one size fits most
- Soft and breathable
- Excellent moisture management
- Machine washable with UPF 50+

SIZING:

Unisex

FABRICS:

Flex Compression 2.2



NECK GAITER

PRO **SELECT** CORE

SF-UAC20-SEL

\$10.00

DESCRIPTION

- Covers nose, mouth, and chin
- Available in youth and adult sizes
- High stretch single layer spandex polyester
- Anti-microbial and moisture wicking
- Non-medical grade

SIZING:

Unisex

FABRICS:

Flex Compression 2.2



ULTRASOFT MICROFIBER TOWEL

PRO **SELECT** CORE

12" x 17" - SF-UTW81-PRO

\$15.00

17" x 25" - SF-UTW82-PRO

\$20.00

23" x 42" - SF-UTW83-PRO

\$33.00

35" x 60" - SF-UTW84-PRO

\$54.00

DESCRIPTION

- An ultrasoft/ultra heavyweight microfiber towel
- Edge-to-Edge, full-color single sided sublimation with exceptional high-resolution imaging and vibrant coloring
- Antimicrobial and mold/mildew resistant

FABRICS:

Microfiber Fleece



CHAIR WRAP & TOPPER

PRO **SELECT** CORE

CHAIR WRAP - SF-UAC26-SEL

\$17.00

CHAIR TOPPER - SF-UAC27-SEL

\$20.00

DESCRIPTION

- Compression spandex - one size fits most
- Easy on-off for quick change
- Durable and vibrant
- Simple and effective promotion space
- Machine washable

FABRICS:

Flex Compression 2.2



DOOR WRAP

PRO **SELECT** CORE

SF-UAC30-SEL

\$74.00

DESCRIPTION

- Stretch fabric door wrap
- Easy setup slip easily over most standard 80" doors
- Graphic is full-color dye sublimated on both sides of door
- Made with premium heavyweight 4-way stretch fabric
- 80" x 30"

FABRICS:

Flex Durafiber



 **DYNAMIC**

BAGS

APEX DUFFLE BAG

PRO SELECT CORE

SMALL - SF-UBG80-PRO	\$66.00
MEDIUM - SF-UBG81-PRO	\$76.00
LARGE - SF-UBG82-PRO	\$80.00
XLARGE - SF-UBG85-PRO	\$86.00

DESCRIPTION

- Made from military grade polyester
- #10 Zippers, metal buckles & rivets at key stress points
- Seatbelt grade webbing
- Interior fully lined
- Adjustable shoulder strap for comfort

FABRICS:

Armortek 1680 D

SIZING:

Small: 17" x 10" x 10"
Medium: 24" x 11" x 11"
Large: 28" x 11" x 11"
XLarge: 36" x 13" x 13"



ALL BAGS ARE MADE WITH PREMIUM FABRIC & HARDWARE



**1680 DENIER
FABRIC**



**NO. 10
ZIPPERS**



**RIVETED STRESS
POINTS**



UNIVERSAL MULTI-SPORT BACKPACK

PRO SELECT CORE

SF-UBG83-PRO

\$112.00

DESCRIPTION

- Made from military grade polyester
- #10 Zippers, metal buckles & rivets at key stress points
- Seatbelt grade webbing
- Traditional style backpack carrier
- Compartments for balls, bats, water bottles, cleats, and helmet

SIZING:

18" x 13" x 9.5"

FABRICS:

Armortek 1680 D



ESSENTIALS BACKPACK

PRO SELECT CORE

SF-UBG84-PRO

\$77.00

DESCRIPTION

- Made from military grade polyester.
- #10 Zippers, metal buckles & rivets at key stress points.
- Seatbelt grade webbing

SIZING:

18" x 12" x 9.5"

FABRICS:

Armortek 1680 D

NEW

FULLY SUBLIMATED

CAPS & VISORS

- 3D & 2D Embroidery
- Low Minimums
- Full Custom
- Stretch Fit & Snap Back
- Unisex & Adult/Youth Sizing
- Coordinate Designs & Match Colors To Your Uniforms




PRO **SERIES**

NEW

SNAPBACK TRUCKER MESH CAP

PRO **SELECT** **CORE**

 CURVED BRIM
SF-UHW82-PRO

\$36.00

 FLAT BRIM
SF-UHW81-PRO

DESCRIPTION

- Includes 3D puff front logo
- Fully Sublimated
- Curved brim or flat brim & mid crown profile
- 12 piece minimum

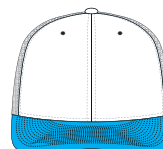
SIZING:

OSFM

FABRICS:

Pro Stretch
Mesh

FLAT BRIM



CURVED BRIM



NEW

STRETCH FIT CAP

PRO SELECT CORE

CURVED BRIM
SF-UHW85-PRO

\$36.00

FLAT BRIM
SF-UHW83-PRO

DESCRIPTION

- Includes 3D puff front logo and 2D back logo
- Fully Sublimated
- Flat or Curved brim & mid crown profile
- 12 piece minimum / 6 piece minimum per size

SIZING:

X-Small: 6 7/8"
Small: 7 1/4"
Medium: 7 1/2"
Large: 7 5/8"
X-Large: 8"

FABRICS:

Pro Stretch



NEW

VISOR

PRO SELECT CORE

SF-UHW84-PRO

\$32.00

DESCRIPTION

- Includes 3D puff front logo
- Fully Sublimated
- Curved brim
- 12 piece minimum

SIZING:

OSFM

FABRICS:

Pro Stretch



STANDARD FONTS

NF Agency

ABCDEFGHIJKLMNOPQRSTUVWXYZ
1234567890

NF Canard

ABCDEFGHIJKLMNOPQRSTUVWXYZ
1234567890

NF Blue Jay

ABCDEFGHIJKLMNOPQRSTUVWXYZ
1234567890

Game Time

ABCDEFGHIJKLMNOPQRSTUVWXYZ
1234567890

NF Disaster

ABCDEFGHIJKLMNOPQRSTUVWXYZ
1234567890

NF Grizzle

ABCDEFGHIJKLMNOPQRSTUVWXYZ
1234567890

NF Impact

ABCDEFGHIJKLMNOPQRSTUVWXYZ
1234567890

NF Sox

ABCDEFGHIJKLMNOPQRSTUVWXYZ
1234567890

NF Trojans

ABCDEFGHIJKLMNOPQRSTUVWXYZ
1234567890

NF Tiffany

ABCDEFGHIJKLMNOPQRSTUVWXYZ
1234567890

Nf Armorhide

ABCDEFGHIJKLMNOPQRSTUVWXYZ
1234567890

NF Banff Script

ABCDEFGHIJKLMNOPQRSTUVWXYZ
1234567890

Edge

ABCDEFGHIJKLMNOPQRSTUVWXYZ
1234567890

NF Captain

ABCDEFGHIJKLMNOPQRSTUVWXYZ
1234567890

NF Glades

ABCDEFGHIJKLMNOPQRSTUVWXYZ
1234567890

Hlite Block

ABCDEFGHIJKLMNOPQRSTUVWXYZ
1234567890

NF Machine

ABCDEFGHIJKLMNOPQRSTUVWXYZ
1234567890

Pro Block

ABCDEFGHIJKLMNOPQRSTUVWXYZ
1234567890

NF Motor

ABCDEFGHIJKLMNOPQRSTUVWXYZ
1234567890

NF Jaguar

ABCDEFGHIJKLMNOPQRSTUVWXYZ
1234567890

To the left is a list of a variety of fonts we offer. These fonts can be used for custom orders. For even more options, visit the builder and explore our extensive font collection to find the perfect match for your project.

ONE COLOR

NAME

10

TWO COLOR

NAME

10

THREE COLOR

NAME

10



STOCK COLORS

Below is a list of our 55 stock sublimation colors, each meticulously formulated to meet the highest industry standards. We utilize the finest tools and resources to ensure our colors remain vibrant and rich, providing unmatched quality. Additionally, we offer expert color matching services to meet your specific needs, ensuring perfect consistency for all your projects. Trust us to deliver the most vivid and accurate colors every time.

BLACK 2.0	GRAPHITE 2.0	GREY 2.0	BASEBALL GREY 2.0	SILVER 2.0	WHITE 2.0	PEWTER 2.0
DARK BROWN 2.0	BROWN 2.0	TAUPE 2.0	DESERT 2.0	DARK VEGAS 2.0	VEGAS 2.0	SAND 2.0
NATURAL 2.0	MAROON 2.0	CARDINAL 2.0	PHOENIX RED 2.0	DARK RED 2.0	RED 2.0	NEON PINK 2.0
FUSCIA 2.0	PINK 2.0	BUBBLEGUM 2.0	RIBBON 2.0	NAVEL 2.0	NEON ORANGE 2.0	ORANGE 2.0
TEXAS ORANGE 2.0	NEON YELLOW 2.0	HIGHLIGHTER 2.0	YELLOW 2.0	GOLD 2.0	ATHLETIC ORANGE 2.0	TITAN 2.0
MOSS 2.0	OLIVE 2.0	NEON GREEN 2.0	LIME GREEN 2.0	KELLY 2.0	FOREST 2.0	DARK GREEN 2.0
LITE TEAL 2.0	TEAL 2.0	DARK TEAL 2.0	COLUMBIA BLUE 2.0	POWDER 2.0	NEON BLUE 2.0	LITE ROYAL 2.0
ROYAL 2.0	DARK ROYAL 2.0	NAVY 2.0	MIDNIGHT 2.0	DARK PURPLE 2.0	PURPLE 2.0	LAVENDER 2.0

DISCLAIMER

When applying a gradient fade, it does not result in a simple two-color transition. An intermediary color will always appear where the two primary colors converge. This intermediate color may vary in the final print. Please note that using gradient fades excludes any possibility of warranties or returns related to the fade. The provided mock-up is for visual reference and is not to scale.

FABRIC INFORMATION

We take immense pride in meticulously selecting the finest fabrics available in the industry, ensuring that every product we create meets the highest standards of quality and durability. Our commitment to excellence drives us to continuously innovate and develop, pushing the boundaries of design and functionality to bring our customers products that not only meet their needs but exceed their expectations.

Our dedication to utilizing the best materials and adopting the latest technologies reflects our unwavering pursuit of perfection in every piece we craft.



DYNADRY

130 GSM / 100% POLYESTER

A versatile, lightweight fabric offering exceptional air permeability without sacrificing moisture wicking capabilities.



DYNALITE

145 GSM / 100% POLYESTER

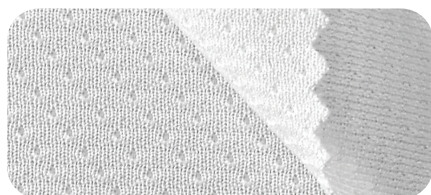
Traditional lightweight interlock fabric with excellent drape, sheen and durability. A great all around fabric.



DYNAPIN

180 GSM / 100% POLYESTER

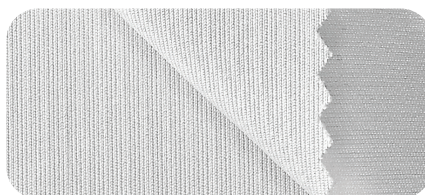
A medium weight knit fabric that features ultra fine pinhole mesh construction. Great all around fabric with excellent breathability and drape.



AIRMESH

190 GSM / 100% POLYESTER

A mediumweight durable and versatile fabric used extensively in hockey and lacrosse products. Micro cell construction give high loft, durability and breath-ability.



PROKNIT 2.7

270 GSM / 100% POLYESTER

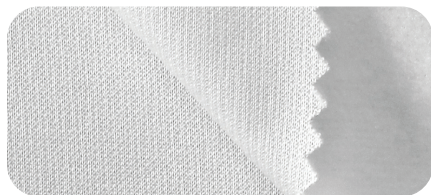
Heavyweight interlock with outstanding durability, limited stretch and reinforcing fibers for use in rugby shirts and baseball pants.



FEATHER MESH

110 GSM / 100% POLYESTER

Our lightweight 2-way mesh fabric is a durable and breathable traditional mesh design used in strategic high ventilation areas.



PRIME FLEECE

250 GSM / 100% POLYESTER

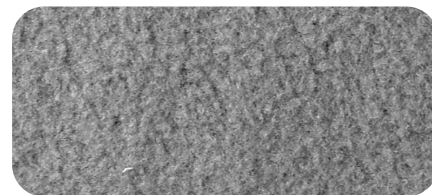
Heavyweight fleece with a traditional cotton look. Soft, warm and durable.



WIFFLE MESH

160 GSM / 100% POLYESTER

Lightweight high loft fabric with outstanding air transfer properties.



FLEECE LINER

190 GSM / 100% POLYESTER

Traditional lightweight interlock fabric with excellent drape, sheen and durability. A great all around fabric.



NANOMESH

200 GSM / 100% POLYESTER

Medium weight mock mesh fabric with excellent drape, sheen and breathability.



DYNAMESH

200 GSM / 100% POLYESTER

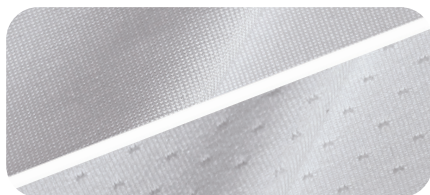
Traditional medium weight mesh fabric offering exceptional air permeability.



HEX 16.5

165 GSM / 100% POLYESTER

Modern lightweight fabric with outstanding drape, sheen and breathability. Subtle hex pattern in weave.

**ULTRAFLEX**

FRONT: 160 GSM / 15% SPANDEX
BACK: 160 GSM / 10% SPANDEX

Flat knit front with pin dot mesh back - abrasion resistant, high-stretch & breathable

**AEROSPHERE**

160 GSM / 100% POLYESTER

A medium weight knit mock mesh fabric. Great all around fabric with excellent breath-ability and drape.

**DAZZLE**

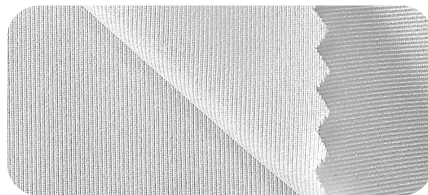
160 GSM / 100% POLYESTER

Heavyweight fabric with brilliant shine. Used primarily in basketball.

**FLEX DURAFIBER**

260 GSM / 10% SPANDEX

Heavyweight fabric with outstanding durability and stretch. Used primarily in football.

**FLEX DRY**

220 GSM / 12% SPANDEX

Mediumweight high spandex content with smooth finish and incredible stretch. Used in garments that desire high stretch

**FLEX COMPRESSION 2.2**

220 GSM / 14% SPANDEX

Mediumweight high spandex content with smooth finish and incredible stretch. Used for compression garments.

**PROFLEX MESH**

280 GSM / 8% SPANDEX

Heavyweight durable spandex with outstanding durability, stretch and breath-ability. Used primarily in football.

**FLEX STRETCH**

270 GSM / 14% SPANDEX

Heavyweight durable spandex with additional stretch. Used primarily in wrestling.

**FLEX MESH 2.0**

200 GSM / 8% SPANDEX

Medium weight fabric with pinhole mesh design for incredible stretch and breathability.

**FLEX AEROFIBER**

225 GSM / 8% SPANDEX

Medium weight durable spandex mesh with outstanding stretch & breath-ability. Used in wide variety of sports and apparel.

**PROFLEX**

320 GSM / 12% SPANDEX

Ultra-heavyweight fabric with outstanding durability and stretch. Used primarily in football.

**FLEX SOFTSHELL**

290 GSM / 6% SPANDEX

Heavyweight multi-layer bonded fabric with 4-way stretch, outstanding wind and water resistance.

**FLEXWEAVE 1.4**

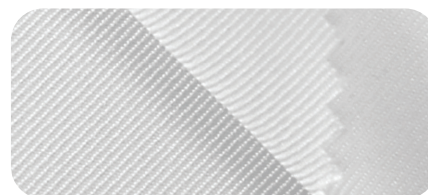
140 GSM / 6% SPANDEX

Lightweight 4-way stretch woven fabric with smooth finish and excellent drape. Woven fabrics offer outstanding durability and pick resistance.

**FLEXWEAVE 1.9**

190 GSM / 6% SPANDEX

Medium weight 4-way stretch woven fabric with smooth finish and excellent drape. Woven fabrics offer outstanding durability and pick resistance.

**CALICO 2.2**

220 GSM / 100% POLYESTER

Medium weight ultra strong, low stretch twill fabric. Features outstanding durability.

HOW TO ORDER

1. CHOOSE A STYLE

Styles are listed below product titles

Style example: **BA-MSS82-PRO**

2. CHOOSE A DESIGN

Examples of stock designs are shown at the end of each sport section. For complete list of designs visit the **Creator+ Custom Builder**

3. CHOOSE DESIGN COLORS

Each design has a unique color sequence and is broken down by product parts. See page 133 for all sublimation colors

4. ADD ARTWORK

Add logos, numbers, fonts and other artwork

5. CHOOSE LOCATIONS

Select the locations for the artwork you would like add

6. SUBMIT ORDER DETAILS

Submit quantities, sizes and player names (if applicable) via roster

7. REVIEW ORDER

Confirm accuracy of all information provided and submit

8. SUBMIT ORDER

Submit your order to your local authorized dealer.

1

CUTTER S/S FULL BUTTON JERSEY

PRO **SELECT** CORE

SELECT - BA-MSS02-SEL \$66.00
CORE - BA-MSS02-COR \$60.00

DESCRIPTION

- Select or Core level short sleeve jersey
- Traditional full button profile
- Scoop hemmed bottom
- Excellent durability and range of motion
- Excellent breathability

SIZING:

Men's: S-3XL
Youth: YXS-YXL

FABRICS:

Flex Aerofiber (Select)
Dynapin (Core)



BASICS					
DESCRIPTION		GENDER	LEVEL	SKU	MSRP
MENS T-SHIRTS					
Mach 5 Sleeveless Crew Neck T-Shirt - Dynalite		Mens, Youth	Core	SF-MSL50-DYN	\$26.00
Mach 5 Sleeveless Crew Neck T-Shirt - Dynapin		Mens, Youth	Select	SF-MSL50-PIN	\$32.00
Mach 5 Sleeveless Crew Neck T-Shirt - Ultraflex		Mens, Youth	Select+	SF-MSL50-ULT	\$36.00
Mach 5 Short Sleeve Crew Neck T-Shirt - Dynalite		Mens, Youth	Core	SF-MSS50-DYN	\$27.00
Mach 5 Short Sleeve Crew Neck T-Shirt - Dynapin		Mens, Youth	Select	SF-MSS50-PIN	\$33.00
Mach 5 Short Sleeve Crew Neck T-Shirt - Ultraflex		Mens, Youth	Select+	SF-MSS50-ULT	\$37.00
Mach 5 Short Sleeve V-Neck T-Shirt - Dynalite		Mens, Youth	Core	SF-MSS51-DYN	\$27.00
Mach 5 Short Sleeve V-Neck T-Shirt - Dynapin		Mens, Youth	Select	SF-MSS51-PIN	\$33.00
Mach 5 Short Sleeve V-Neck T-Shirt - Ultraflex		Mens, Youth	Select+	SF-MSS51-ULT	\$37.00
Mach 5 Long Sleeve Crew Neck T-Shirt - Dynalite		Mens, Youth	Core	SF-MLS50-DYN	\$32.00
Mach 5 Long Sleeve Crew Neck T-Shirt - Dynapin		Mens, Youth	Select	SF-MLS50-PIN	\$38.00
Mach 5 Long Sleeve Crew Neck T-Shirt - Ultraflex		Mens, Youth	Select+	SF-MLS50-ULT	\$42.00
Mach 5 Long Sleeve V-Neck T-Shirt - Dynalite		Mens, Youth	Core	SF-MLS51-DYN	\$32.00
Mach 5 Long Sleeve V-Neck T-Shirt - Dynapin		Mens, Youth	Select	SF-MLS51-PIN	\$38.00
Mach 5 Long Sleeve V-Neck T-Shirt - Ultraflex		Mens, Youth	Select+	SF-MLS51-ULT	\$42.00
Mach 5 Hooded T-Shirt Sleeveless - Dynalite		Mens, Youth	Core	SF-MSL52-DYN	\$34.00
Mach 5 Hooded T-Shirt Sleeveless - Dynapin		Mens, Youth	Select	SF-MSL52-PIN	\$40.00
Mach 5 Hooded T-Shirt Sleeveless - Ultraflex		Mens, Youth	Select+	SF-MSL52-ULT	\$44.00
Mach 5 Hooded T-Shirt Short Sleeve - Dynalite		Mens, Youth	Core	SF-MSS52-DYN	\$35.00
Mach 5 Hooded T-Shirt Short Sleeve - Dynapin		Mens, Youth	Select	SF-MSS52-PIN	\$41.00
Mach 5 Hooded T-Shirt Short Sleeve - Ultraflex		Mens, Youth	Select+	SF-MSS52-ULT	\$45.00
Mach 5 Hooded T-Shirt Long Sleeve - Dynalite		Mens, Youth	Core	SF-MLS52-DYN	\$40.00
Mach 5 Hooded T-Shirt Long Sleeve - Dynapin		Mens, Youth	Select	SF-MLS52-PIN	\$46.00
Mach 5 Hooded T-Shirt Long Sleeve - Ultraflex		Mens, Youth	Select+	SF-MLS52-ULT	\$50.00
MENS SHORTS					
Mach 5 No Pocket Shorts - Dynalite - 5"		Mens, Youth	Core	SF-MSH55-DYN5	\$30.00
Mach 5 No Pocket Shorts - Dynalite - 7"		Mens, Youth	Core	SF-MSH53-DYN7	\$30.00
Mach 5 No Pocket Shorts - Dynalite - 9"		Mens	Core	SF-MSH51-DYN9	\$30.00
Mach 5 No Pocket Shorts - Dynapin - 5"		Mens, Youth	Select	SF-MSH55-PIN5	\$36.00
Mach 5 No Pocket Shorts - Dynapin - 7"		Mens, Youth	Select	SF-MSH53-PIN7	\$36.00
Mach 5 No Pocket Shorts - Dynapin - 9"		Mens	Select	SF-MSH51-PIN9	\$36.00
Mach 5 No Pocket Shorts - Ultraflex - 5"		Mens, Youth	Select+	SF-MSH55-ULT5	\$40.00
Mach 5 No Pocket Shorts - Ultraflex - 7"		Mens, Youth	Select+	SF-MSH53-ULT7	\$40.00
Mach 5 No Pocket Shorts - Ultraflex - 9"		Mens	Select+	SF-MSH51-ULT9	\$40.00
Mach 5 W/ Pocket Shorts - Dynalite - 5"		Mens, Youth	Core	SF-MSH56-DYN5	\$36.00
Mach 5 W/ Pocket Shorts - Dynalite - 7"		Mens, Youth	Core	SF-MSH54-DYN7	\$36.00
Mach 5 W/ Pocket Shorts - Dynalite - 9"		Mens	Core	SF-MSH52-DYN9	\$36.00
Mach 5 W/ Pocket Shorts - Dynapin - 5"		Mens, Youth	Select	SF-MSH56-PIN5	\$42.00
Mach 5 W/ Pocket Shorts - Dynapin - 7"		Mens, Youth	Select	SF-MSH54-PIN7	\$42.00
Mach 5 W/ Pocket Shorts - Dynapin - 9"		Mens	Select	SF-MSH52-PIN9	\$42.00
Mach 5 W/ Pocket Shorts - Ultraflex - 5"		Mens, Youth	Select+	SF-MSH56-ULT5	\$46.00
Mach 5 W/ Pocket Shorts - Ultraflex - 7"		Mens, Youth	Select+	SF-MSH54-ULT7	\$46.00
Mach 5 W/ Pocket Shorts - Ultraflex - 9"		Mens	Select+	SF-MSH52-ULT9	\$46.00



WOMENS T-SHIRTS

Mach 5 Sleeveless Crew Neck T-Shirt - Dyalite		Womens	Core	SF-WSL50-DYN	\$26.00
Mach 5 Sleeveless Crew Neck T-Shirt - Dynapin		Womens	Select	SF-WSL50-PIN	\$32.00
Mach 5 Sleeveless Crew Neck T-Shirt - Ultraflex		Womens	Select+	SF-WSL50-ULT	\$36.00
Mach 5 Sleeveless Racerback V-Neck T-Shirt - Dyalite	NEW	Womens, Girls	Core	SF-WSL53-DYN	\$26.00
Mach 5 Sleeveless Racerback V-Neck T-Shirt - Dynapin	NEW	Womens, Girls	Select	SF-WSL53-PIN	\$32.00
Mach 5 Sleeveless Racerback V-Neck T-Shirt - Ultraflex	NEW	Womens, Girls	Select+	SF-WSL53-ULT	\$36.00
Mach 5 Short Sleeve Crew Neck T-Shirt - Dyalite		Womens	Core	SF-WSS50-DYN	\$27.00
Mach 5 Short Sleeve Crew Neck T-Shirt - Dynapin		Womens	Select	SF-WSS50-PIN	\$33.00
Mach 5 Short Sleeve Crew Neck T-Shirt - Ultraflex		Womens	Select+	SF-WSS50-ULT	\$37.00
Mach 5 Short Sleeve V-Neck T-Shirt - Dyalite		Womens	Core	SF-WSS51-DYN	\$27.00
Mach 5 Short Sleeve V-Neck T-Shirt - Dynapin		Womens	Select	SF-WSS51-PIN	\$33.00
Mach 5 Short Sleeve V-Neck T-Shirt - Ultraflex		Womens	Select+	SF-WSS51-ULT	\$37.00
Mach 5 Long Sleeve Crew Neck T-Shirt - Dyalite		Womens	Core	SF-WLS50-DYN	\$32.00
Mach 5 Long Sleeve Crew Neck T-Shirt - Dynapin		Womens	Select	SF-WLS50-PIN	\$38.00
Mach 5 Long Sleeve Crew Neck T-Shirt - Ultraflex		Womens	Select+	SF-WLS50-ULT	\$42.00
Mach 5 Long Sleeve V-Neck T-Shirt - Dyalite		Womens	Core	SF-WLS51-DYN	\$32.00
Mach 5 Long Sleeve V-Neck T-Shirt - Dynapin		Womens	Select	SF-WLS51-PIN	\$38.00
Mach 5 Long Sleeve V-Neck T-Shirt - Ultraflex		Womens	Select+	SF-WLS51-ULT	\$42.00

WOMENS SHORTS

Mach 5 No Pocket Shorts - Dyalite - 3"	NEW	Womens	Core	SF-WSH55-DYN3	\$30.00
Mach 5 No Pocket Shorts - Dyalite - 5"		Womens	Core	SF-WSH53-DYN5	\$30.00
Mach 5 No Pocket Shorts - Dyalite - 7"		Womens	Core	SF-WSH51-DYN7	\$30.00
Mach 5 No Pocket Shorts - Dynapin - 3"	NEW	Womens	Select	SF-WSH55-PIN3	\$36.00
Mach 5 No Pocket Shorts - Dynapin - 5"		Womens	Select	SF-WSH53-PIN5	\$36.00
Mach 5 No Pocket Shorts - Dynapin - 7"		Womens	Select	SF-WSH51-PIN7	\$36.00
Mach 5 No Pocket Shorts - Ultraflex - 3"	NEW	Womens	Select+	SF-WSH55-ULT3	\$40.00
Mach 5 No Pocket Shorts - Ultraflex - 5"		Womens	Select+	SF-WSH53-ULT5	\$40.00
Mach 5 No Pocket Shorts - Ultraflex - 7"		Womens	Select+	SF-WSH51-ULT7	\$40.00
Mach 5 W/ Pocket Shorts - Dyalite - 3"	NEW	Womens	Core	SF-WSH56-DYN3	\$36.00
Mach 5 W/ Pocket Shorts - Dyalite - 5"		Womens	Core	SF-WSH54-DYN5	\$36.00
Mach 5 W/ Pocket Shorts - Dyalite - 7"		Womens	Core	SF-WSH52-DYN7	\$36.00
Mach 5 W/ Pocket Shorts - Dynapin - 3"	NEW	Womens	Select	SF-WSH56-PIN3	\$42.00
Mach 5 W/ Pocket Shorts - Dynapin - 5"		Womens	Select	SF-WSH54-PIN5	\$42.00
Mach 5 W/ Pocket Shorts - Dynapin - 7"		Womens	Select	SF-WSH52-PIN7	\$42.00
Mach 5 W/ Pocket Shorts - Ultraflex - 3"	NEW	Womens	Select+	SF-WSH56-ULT3	\$46.00
Mach 5 W/ Pocket Shorts - Ultraflex - 5"		Womens	Select+	SF-WSH54-ULT5	\$46.00
Mach 5 W/ Pocket Shorts - Ultraflex - 7"		Womens	Select+	SF-WSH52-ULT7	\$46.00

BASKETBALL

DESCRIPTION		GENDER	LEVEL	SKU	MSRP
MENS					
Crossover Crew Neck Jersey		Mens, Boys	Core	BB-MSL01-COR	\$46.00
Zone V-Neck Jersey		Mens, Boys	Core	BB-MSL02-COR	\$46.00
Pulse Reversible Jersey		Mens, Boys	Core	BB-MSL05-COR	\$50.00
Pulse Reversible Shorts - 5"	NEW	Mens, Boys	Core	BB-MSH05-COR5	\$50.00
Pulse Reversible Shorts - 7"		Mens, Boys	Core	BB-MSH05-COR7	\$50.00

Pulse Reversible Shorts - 9"	Mens	Core	BB-MSH05-COR9	\$50.00
------------------------------	------	------	---------------	---------

WOMENS

Crossover Crew Neck Jersey	Womens, Girls	Core	BB-WSL01-COR	\$46.00
Zone V-Neck Jersey	Womens, Girls	Core	BB-WSL02-COR	\$46.00
Pulse Reversible Jersey	Womens, Girls	Core	BB-WSL05-COR	\$50.00
Pulse Reversible Shorts - 5"	Womens, Girls	Core	BB-WSH05-COR5	\$50.00
Pulse Reversible Shorts - 7"	Womens, Girls	Core	BB-WSH05-COR7	\$50.00

FLAG FOOTBALL

DESCRIPTION	GENDER	LEVEL	SKU	MSRP
MENS				
Quest Woven Field Shorts - No Pocket - 5"	Mens, Boys	Select	FF-MSH04-SEL5	\$40.00
Quest Woven Field Shorts - No Pocket - 8"	Mens, Boys	Select	FF-MSH01-SEL8	\$40.00
Quest Compression Shorts	Mens, Boys	Select	FF-MSH02-SEL	\$44.00
WOMENS				
Quest Woven Field Shorts - No Pocket	Womens, Girls	Select	FF-WSH01-SEL	\$40.00
Quest Compression Shorts	Womens, Girls	Select	FF-WSH02-SEL	\$44.00

LACROSSE

DESCRIPTION	GENDER	LEVEL	SKU	MSRP
MENS				
Axis 2-Ply Reversible Lacrosse Vest	Mens, Youth	Core	LX-MSL08-COR	\$50.00
WOMENS				
Axis 2-Ply Reversible Racerback Lacrosse Vest	Womens, Girls	Core	LX-WSL08-COR	\$50.00

TRACK & FIELD

DESCRIPTION	GENDER	LEVEL	SKU	MSRP
MENS				
Miler Track Short	Mens, Youth	Select	TK-MSH02-SEL2	\$40.00
Power Running Singlet	Mens, Youth	Core	TK-MSL01-COR	\$26.00
Quest Compression Shorts	Mens, Boys	Select	FF-MSH02-SEL	\$44.00
WOMENS				
Miler Track Short	Womens, Girls	Select	TK-WSH02-SEL2	\$40.00
Power Running Singlet	Womens, Girls	Core	TK-WSL01-COR	\$26.00
Quest Compression Shorts	Womens, Girls	Select	FF-WSH02-SEL	\$44.00

VOLLEYBALL

DESCRIPTION	GENDER	LEVEL	SKU	MSRP
WOMENS				
Hybrid Volleyball Short	NEW Womens, Girls	Select	VB-WSH02-SEL3	\$38.00
Hybrid Volleyball Short - Long	NEW Womens, Girls	Select	VB-WSH02-SEL7	\$44.00



**HERITAGE.
SPEED.
DEPENDABILITY.**



DYNAMIC

**sales@dynamicteamsports.com
(609) 596-2502**

With decades of experience, we've simplified the uniform process from start to finish—so coaches, athletes, and dealers can focus on the game, not the gear. **We believe in getting it right, getting it there fast, and making the entire process as smooth as possible.** No guesswork. No missed deadlines. Just easy, reliable, highest quality uniforms & teamwear that show up on time—every time.

www.dynamicteamsports.com