

TRACK & FIELD 2023

GILL[®]
ATHLETICS

800.637.3090



OFFICIAL TRACK & FIELD
EQUIPMENT SUPPLIER

GILLATHLETICS.COM

**QUALITY.
COMMITMENT.
INNOVATION.**

Harry L Gill

GILL[®]
ATHLETICS

Since 1918, Gill Athletics[®] has empowered coaches with innovative equipment that develops track athletes and elevates the sport across the globe.

WHAT'S INSIDE



FACILITIES CHECKLIST

Make remembering what you need easier!



02 JUMPS

- 04 Landing Systems
- 07 Custom Pit Graphics
- 12 Standards
- 16 Box Collars, Base Pads & Platforms
- 18 Track Shelters & Pit Garages
- 20 Crossbars & Accessories
- 22 Vaulting Poles
- 30 Vault Accessories

32 SPRINTS & HURDLES

- 34 Starting Blocks
- 38 Hurdles
- 42 Hurdle Accessories

44 MEETS

- 46 Displays
- 48 Measuring Devices & Cameras
- 50 Starting Devices
- 52 Track Accessories & Maintenance
- 56 Cross Country & Portable Tents

58 THROWS

- 60 Discus
- 64 Hammers & Shots
- 66 Throw Accessories
- 69 Javelins & Accessories
- 77 Implement Accessories

78 TRAINING

- 80 Speed Development
- 83 Med Balls
- 84 Jump Training & Testing
- 88 Agility Training
- 90 Bodyweight Training
- 92 Weight Bars & Plates
- 94 Flexibility & Rehab

96 FACILITIES

- 98 Hammer Cages
- 102 Discus Cages
- 106 Discus, Shot & Indoor Cages
- 108 Circles & Toeboards
- 110 Takeoff Boards & Curbing
- 112 Vault Boxes & VersaCom Boxes
- 114 Sand Pit Forms & Covers
- 116 Steeplechase
- 118 Raised Runways & Ballstops

2023 Liania Sports Group, Inc., Gill Athletics, PowerMax, Pacer are all registered trademarks of Gill Athletics, Inc. Gill Essentials, Maximus, SafetyMax, AGX, Pacer One, PacerFXV, Pacer Composite, Continuum, Fusion, Carbon 1, Hollowood Star, Orbiter, OTE, Tru-Flight, T2-Fiber, Tufmesh Plus, Duralife, are all trademarks of Gill Athletics, Inc. NCAA is a registered trademark of The National Collegiate Athletic Association.

CHECK OUT OUR GREAT **NEW** PRODUCTS

Featured here and online at: www.GILLATHLETICS.com / **NewProducts**

Prices effective from October 1, 2022 through September 30, 2023

RAISE

THE

BAR





**LANDING
SYSTEMS**

LANDING SYSTEMS

For over 100 years, Gill Athletics® has kept coaches focused on their athletes with equipment they can take for granted. Our pole vault and high jump landing systems are engineered by collegiate athletes, professionals, and coaches alike. Both the NCAA® and NFHS® have partnered with us as we join to support every athlete's competitive journey and aspiration.

DOUBLE FRONT SYSTEMS

Available on G4, G6, and AGX M4. Call for Details.



SIDE CARABINER CONNECTION:

Top Pad is connected to base pads with carabiner side attachments, eliminating any obstruction on top of the pit. This exclusive attention to detail provides an obstruction-free landing area with athletes' safety in mind.



OPTIMAL PIT ENTRY ANGLE:

An ASTM approved vault box collar changes the slope of the tri-slant area when vaulting poles rotate. Gill's thoughtful pit entry design accounts for the box collar's effect by featuring a vaulter friendly angle.



GILL LANDING SYSTEMS FEATURES*

Top Pads

EDGE-TO-EDGE TOP PAD: Aesthetic and functional design eliminates spike contact with base units and unevenness at the edge of the pit. This Gill exclusive feature will increase the life of your new pit and improve safety near the edges.

TUFMESH PLUS™ CASING: Using exclusive 17 x 11 1000 denier material increases the life of your top pad and stands up to repeated use better than any other landing system.

2" DURALIFE™ FOAM: Soft and durable foam creates confidence in every practice. Coaches can teach with assurance because of this industry leading design.

V-LOOP VINYL STRAP: Designed to evenly distribute the force from the athlete's landing, V-Loop straps eliminate tears compared to traditionally designed pits that put undue stress on the seams.

REVERSIBLE: Extend the life of your pit, Gill's top pads are designed to use either side safely and easily.

Vinyl Base Units

ALL-VINYL BASE: Exclusive to Gill landing systems, this unique design keeps water out of your pit better than traditional mesh top units. To extend the life of your pit you keep water out of the foam. Gill's all-vinyl design gets results.

COMPLETE INTERCHANGEABILITY: Reversible sections for maximum interchangeability. This adds years to the life of your pit by maximizing the usage and size of the athlete's landing area.

QUADRUPLE DURALIFE LAYER FOAM: Athletes need to know they are landing safely and comfortably. Gill's new QUADRUPLE Duralife foam is 25% softer than others yet with firmness necessary for the safest landings.

DUAL COATED VINYL: Evenly distributed 1000 x 1000 denier polyester fabric is bonded on both sides with 18oz knife-coated PVC vinyl. This exclusive fabric design eliminates vinyl delamination seen in other pits after years of use. This creates the most durable casing that is lighter than the other pits.

STITCHING: Gill's entire landing system is stitched with the industry's strongest 210 bonded polyester thread. Simply put, your new Gill pit comes triple stitched with the toughest thread in the industry to hold up to high volume practices.

GRIP STRIP FASTENING SYSTEM: A pit is safest when constructed as an integrated system. Gill's Grip Strip Fastening System will keep your base sections functioning as one unit season after season.

ECO-SMART COMPRESS PACKS: Gill Athletics cares about the environment and your budget. All landing systems are expertly packed and shipped utilizing Compress-Pack shipping, reducing freight volume lowering fuel consumption and shipping costs. Pits restore to original size and shape minutes after unpacking.

12 YEAR WARRANTY: A long-term warranty is only as dependable as the company standing behind it. And after 100 years, you can count on Gill to stand behind your landing system for years to come. If any failure occurs in the first 12 years, under normal use and care, we will repair or replace the damaged part. Essentials line includes 5 year warranty.

CUSTOM COLOR AND GRAPHICS: Choose from over 100 unique vinyl casing and top pad color combinations offered at NO EXTRA CHARGE! Select your vinyl casing (xx) and top pad (yy) color combination. Add distinction with multi-color graphics on the top pad, weather cover, or both.

**Features May Exclude Essentials Systems*



CUSTOMIZABLE SYSTEMS

See color charts on page 7 to replace the XX and YY in the item numbers.



SEE IT ONLINE!

Visit GillAthletics.com
and build your custom pit!

CUSTOM PRINTING

ULTIMATE CUSTOM PRINTING

Fully customizable Edge-To-Edge top pad printing and side panel casing graphics are available for **landing systems and weather covers**. With nearly limitless custom printing options, call today to learn more about the ultimate in customization. 3 Year limited warranty on all custom printed graphics.

**Excludes Essentials Systems*



As shown: EDGE-TO-EDGE custom 100% Top Pad Graphic, and PV Side Panel Graphic options.

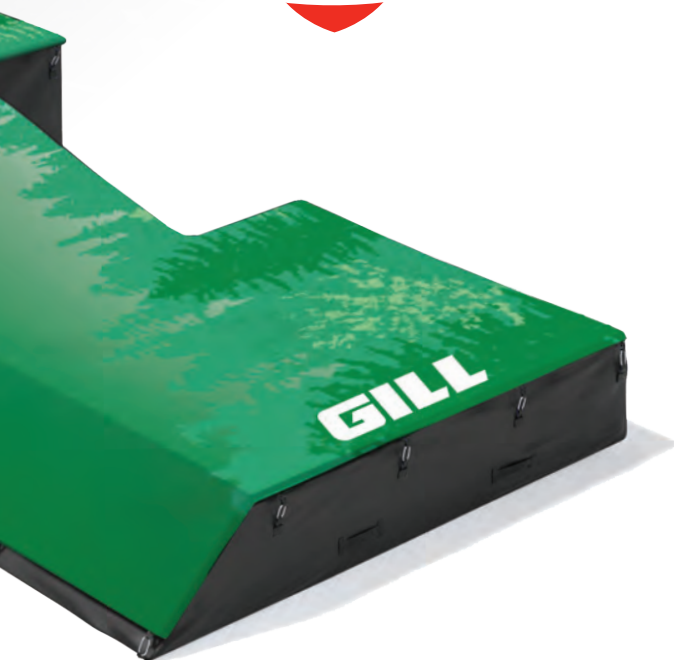


GILL LANDING SYSTEMS PRINTING

Add logo, school name, or edge-to-edge design to any landing system top pad, side panel or weather cover. Multi-color graphic is screen printed in dimensioned areas shown below. Custom graphic selections are printed on same color mesh as top pad, eliminating the white box. **Vector artwork must be provided.** *Features Exclude Essentials Systems



On all Gill Landing Systems Graphics



Top Pads & Covers

	SQUARE:	Coaches Box Graphic - 60" x 60"	
		9451 Landing System Graphic	\$1300
		9452 Weather Cover Top	\$1300

	OVERSIZED:	Oversized Coaches Box Graphic - 90" x 110"	
		9454 Landing System Graphic	\$1670
		9455 Weather Cover Top	\$1670

	HORIZONTAL:	Horizontal Graphic - 55" x 240"	
		9552 Landing System Graphic	\$2695
		9557 Weather Cover Top	\$2695

	PV FRONT EXTENSION:	Top Pad Graphic (Choice of Horizontal or Vertical graphics)	
		9553 Landing System Graphic	\$1395
		9558 Weather Cover Top	\$1395

	EDGE-TO-EDGE:	Custom 100% Top Pad Graphic	
		9554 PV Landing System Graphic	Call for quote
		9559 PV Weather Cover Top	Call for quote
		9554 HJ Landing System Graphic	Call for quote
		9559 HJ Weather Cover Top	Call for quote

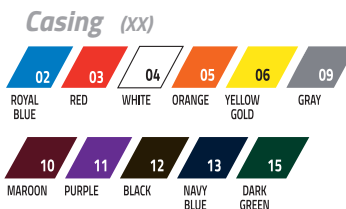
Vinyl Base & Sides

	PV SIDE PANEL:	Side Panel Graphic - 14" x 156"	
		9456 Landing System Graphic	\$633
		9457 Weather Cover Side Panel	\$633

	HJ SIDE PANEL:	Side Panel Graphic - 9" x 108"	
		9456 Landing System Graphic	\$633
		9457 Weather Cover Side Panel	\$633

COLOR SELECTION

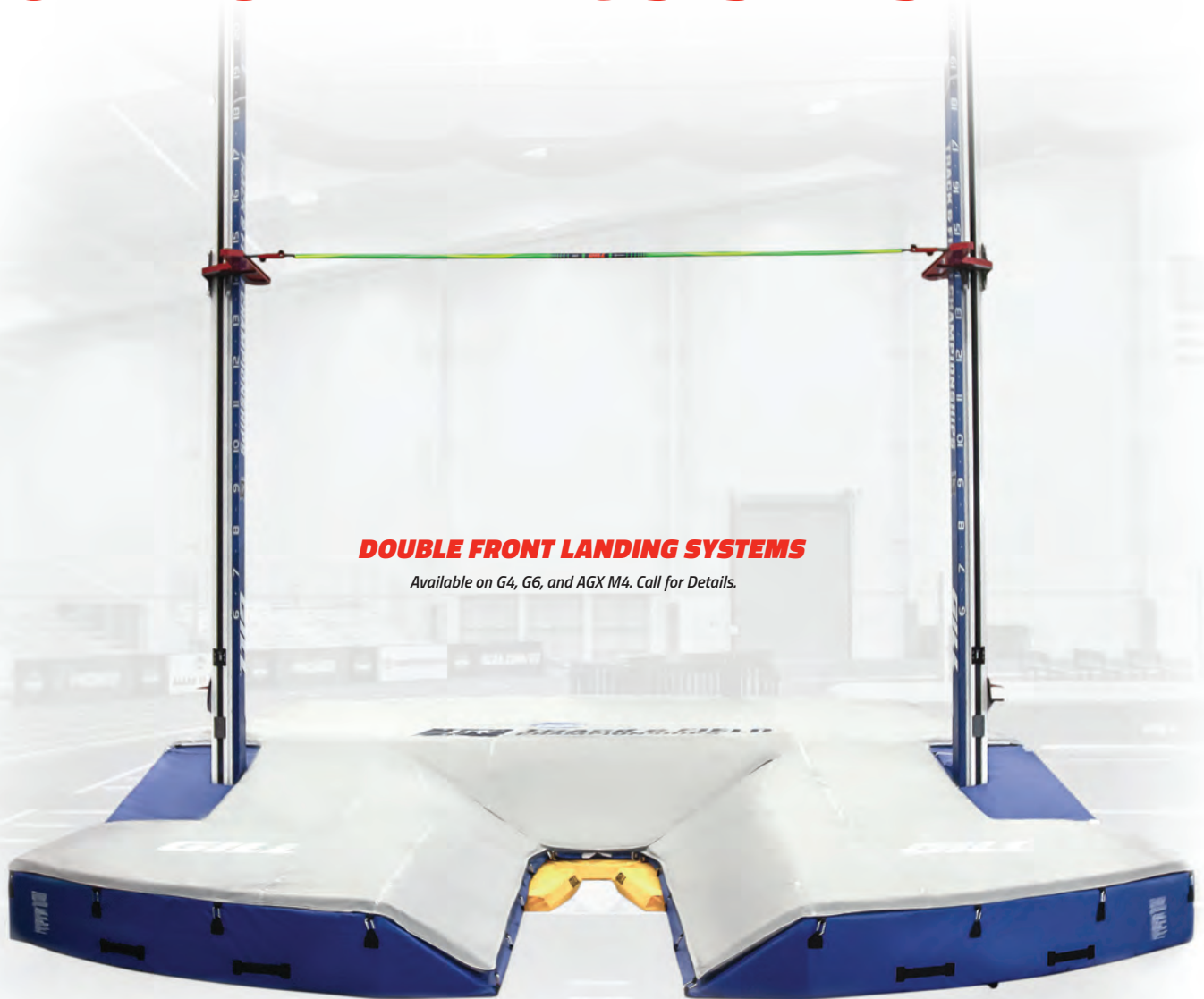
To specify color with order, use the two-digit number of your color selection to replace XX & YY in the item number.



SEE IT ONLINE!

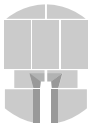
Visit GillAthletics.com and build your custom pit!

POLE VAULT LANDING SYSTEMS



DOUBLE FRONT LANDING SYSTEMS

Available on G4, G6, and AGX M4. Call for Details.



OFFICIAL EQUIPMENT SUPPLIER TO THE
NCAA TRACK & FIELD CHAMPIONSHIPS

AGX M4 PV LANDING SYSTEM

- 21' 6" x 31' 2" x 32" // 6.55m x 9.50m x 0.81m
- 2" Top Pad
- 21' in back of the vault box
- Meets World Athletics, NCAA and NFHS specifications
- 12 year warranty

66817CXXYY Landing System  \$48225

6681702CXX Weather Cover \$4340

CUSTOMIZE IT!

MULTIPLE COLOR COMBINATIONS

*Custom Graphics available. See page 7.





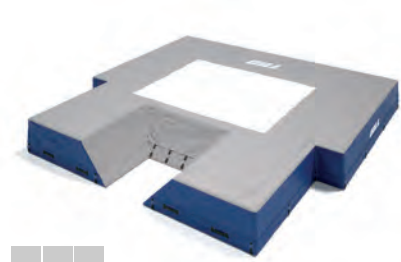
On all Gill Landing Systems*
Call for Details.

*Excludes Essentials. 5 Year Warranty on Essentials.



CUSTOMIZABLE SYSTEMS

See color charts on page 7 to replace
the XX and YY in the item numbers.



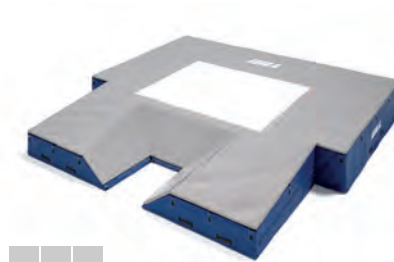
ESSENTIALS™ PV LANDING SYSTEM

- 19' 9" x 20' 2" x 26" // 6.02m x 6.15m x 0.66m
- Skirted Mesh Top Holds Unit in Place
- Royal blue vinyl with gray skirted mesh top only
- *Meets NFHS specifications*
- *5 year warranty*

653	Landing System	\$19785
65302	Weather Cover	\$2180

VP300	Essentials PV Valuepack	\$24045
--------------	-------------------------	----------------

INCLUDED: Essentials PV System, Weather Cover, 7100 Essentials PV Standards, 61517CXX Base Pads, 523 Essentials PV Crossbar



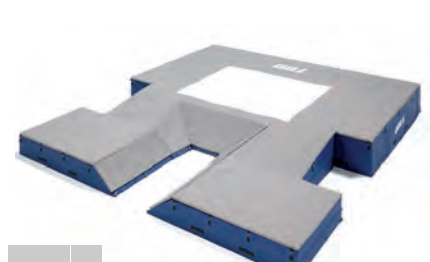
S1 PV LANDING SYSTEM

- 20' x 20' 2.5" x 28" // 6.1m x 6.16m x 0.71m
- 2" Top Pad
- 16' 7" in back of the vault box
- *Meets NFHS specifications*
- *12 year warranty*

65417CXXYY	Landing System	\$26105
6541702CXX	Weather Cover	\$2715

VP65417CXXYY	S1 PV Valuepack	\$31530
---------------------	-----------------	----------------

INCLUDED: S1 PV System, Weather Cover, 77100 S4 PV Standards, 61517CXX Base Pads, 523 Essentials PV Crossbar



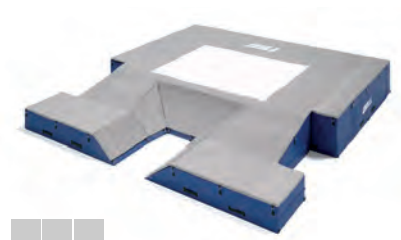
S4 PV LANDING SYSTEM

- 21' 6" x 24' x 28" // 6.55m x 7.32m x 0.71m
- 2" Top Pad
- 16' 7" in back of the vault box
- *Meets NFHS specifications*
- *12 year warranty*

65817CXXYY	Landing System	\$32430
6581702CXX	Weather Cover	\$3225

VP65817CXXYY	S4 PV Valuepack	\$37915
---------------------	-----------------	----------------

INCLUDED: S4 PV System, Weather Cover, 77100 S4 PV Standards, 61517CXX Base Pads, 523 Essentials PV Crossbar



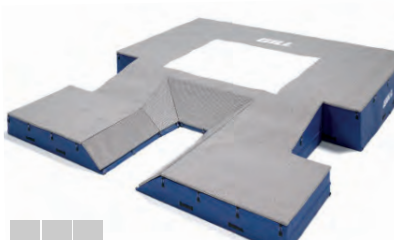
G1 PV LANDING SYSTEM

- 20' x 21' 11" x 32" // 6.10m x 6.68m x 0.81m
- 2" Top Pad
- 16' 7" in back of the vault box
- *Meets NCAA and NFHS specifications*
- *12 year warranty*

66217CXXYY	Landing System	\$32835
6621702CXX	Weather Cover	\$3315

VP66217CXXYY	G1 PV Valuepack	\$43000
---------------------	-----------------	----------------

INCLUDED: G1 PV System, Weather Cover, 77200C12 G4 PV Standards, 61617CXX Base Pads, 526 Gill Collegiate PV Crossbar



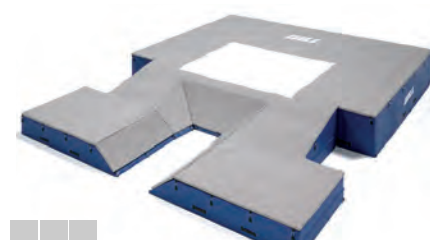
G4 PV LANDING SYSTEM

- 21' 6" x 24' x 32" // 6.55m x 7.32m x 0.81m
- 2" Top Pad
- 16' 7" in back of the vault box
- *Meets NCAA and NFHS specifications*
- *12 year warranty*

66317CXXYY	Landing System	\$36275
6631702CXX	Weather Cover	\$3625

VP66317CXXYY	G4 PV Valuepack	\$43000
---------------------	-----------------	----------------

INCLUDED: G4 PV System, Weather Cover, 77200C12 G4 PV Standards, 61617CXX Base Pads, 526 Gill Collegiate PV Crossbar



G6 PV LANDING SYSTEM

- 21' 6" x 27' x 32" // 6.55m x 8.23m x 0.81m
- 2" Top Pad
- 19' 7" in back of the vault box
- *Meets Word Athletics, NCAA and NFHS specifications*
- *12 year warranty*

66517CXXYY	Landing System	\$40015
6651702CXX	Weather Cover	\$3990

VP66517CXXYY	G6 PV Valuepack	\$47000
---------------------	-----------------	----------------

INCLUDED: G6 PV System, Weather Cover, 77200C12 G4 PV Standards, 61617CXX Base Pads, 526 Gill Collegiate PV Crossbar



OFFICIAL TRACK & FIELD
EQUIPMENT SUPPLIER

HIGH JUMP LANDING SYSTEMS

CUSTOMIZE IT!


SHOW YOUR SCHOOL PRIDE

*60 x 60 Top Pad Printing shown. See page 7.

G4 HJ LANDING SYSTEM

- 20' x 13' 2" x 28" // 6.10m x 4.01m x 0.71m
- 2" Top pad
- Added safety cutout
- Meets World Athletics, NCAA and NFHS specifications
- 12 year warranty



64417CXXYY Landing System  \$16415

6441702CXX Weather Cover \$2450




OFFICIAL EQUIPMENT SUPPLIER TO THE
NCAA TRACK & FIELD CHAMPIONSHIPS

AGX M4 HJ LANDING SYSTEM

- 27' 2" x 13' 2" x 28" // 8.29m x 4.01m x 0.71m
- 2" Top pad
- Added safety cutout
- Meets World Athletics, NCAA and NFHS specifications
- 12 year warranty



64817CXXYY Landing System  \$21705

6481702CXX Weather Cover \$2790



*Ultimate Custom Printing shown:
Horizontal Top Pad Graphic.



On all Gill Landing Systems*
Call for Details.

*Excludes Essentials. 5 Year Warranty on Essentials.



CUSTOMIZABLE SYSTEMS

See color charts on page 7 to replace
the XX and YY in the item numbers.



ESSENTIALS™ HJ LANDING SYSTEM

- 16' x 8' x 24" // 4.88m x 2.44m x 0.61m
- Skirted mesh top holds unit in place
- Royal blue vinyl with gray skirted mesh top only
- Meets NFHS specifications
- 5 year warranty

640A Landing System **\$6830**

640A02 Weather Cover **\$1075**

VP405 Essentials HJ Valuepack **\$8010**

INCLUDED: Essentials HJ System, Weather Cover, 700 Essentials HJ Standards, 522 Essentials HJ Crossbar



S1 HJ LANDING SYSTEM

- 16'6" x 8' x 26" // 5.03m x 2.44m x 0.66m
- 2" Top pad
- Meets NFHS specifications
- 12 year warranty

64117CXXYY Landing System **\$9475**

6411702CXX Weather Cover **\$1450**

VP64117CXXYY S1 HJ Valuepack **\$11500**

INCLUDED: S1 HJ System, Weather Cover, 78105 S4 HJ Standards, 522 Essentials HJ Crossbar



S4 HJ LANDING SYSTEM

- 16' 6" x 10' x 26" // 5.03m x 3.05m x 0.66m
- 2" Top pad
- Added safety cutout
- Meets NCAA and NFHS specifications
- 12 year warranty

64217CXXYY Landing System **\$11955**

6421702CXX Weather Cover **\$1825**

VP64217CXXYY S4 HJ Valuepack **\$14150**

INCLUDED: S4 HJ System, Weather Cover, 78105 S4 HJ Standards, 522 Essentials HJ Crossbar



G1 HJ LANDING SYSTEM

- 18' x 10' x 26" // 5.49m x 3.05m x 0.66m
- 2" Top pad
- Added safety cutout
- Meets NCAA and NFHS specifications
- 12 year warranty

64617CXXYY Landing System **\$13525**

6461702CXX Weather Cover **\$2090**

VP64617CXXYY G1 HJ Valuepack **\$16720**

INCLUDED: G1 HJ System, Weather Cover, 78200C12 G4 HJ Standards, 525 Gill Collegiate HJ Crossbar



POLE VAULT STANDARDS

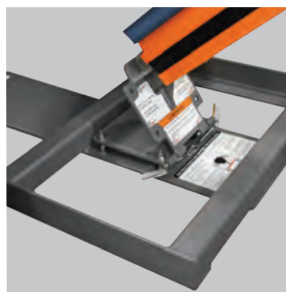
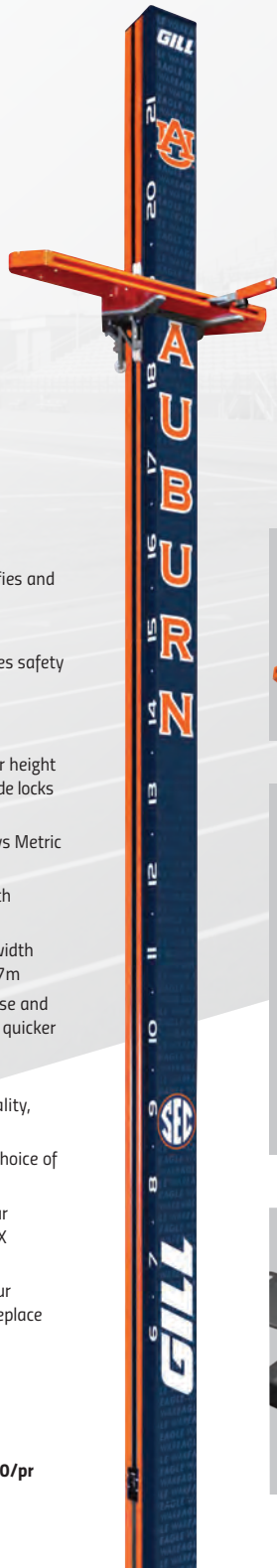


OFFICIAL EQUIPMENT SUPPLIER TO THE
NCAA TRACK & FIELD CHAMPIONSHIPS

AGX M4 POLE VAULT STANDARDS

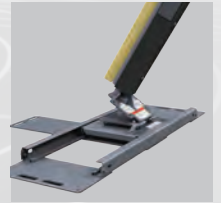
- Dual hand crank system simplifies and speeds up height transitions
- Height range from 6' 6" to 21'
- Exclusive 2" safety pad increases safety of athletes and reduces vaulting pole damage
- Dual positional locking system; Practice Mode creates quick bar height changes while Competition Mode locks in peg height during jumps
- Internal measuring tape displays Metric and English units
- Quick hand crank crossbar depth adjustment from 0cm to 80cm
- Exclusive customizable offset width between pins from 4.30m-4.37m
- Steel base for stability during use and Easy-Port hinge technology for quicker location movement
- Strong aluminum profile increases aesthetics, functionality, and customization
- Customize 2" safety pad with choice of color and graphics
- Use the two-digit number of your vinyl color selection to replace XX in the item number
- Use the two-digit number of your powder coat color selection to replace YY in the item number
- Meets NFHS, NCAA, and World Athletics specifications
- 10 year warranty

740110CXXYYSP \$27050/pr



BASE PADS

See page 16



MANUAL DEPTH
ADJUSTMENTS

AGX M2 POLE VAULT STANDARDS

- Includes high-end features from the AGX M4 Standard except with manual depth adjustments
- Height ranges 6'9" to 21'6"
- Meets NFHS, NCAA, and World Athletics specifications
- 10 year warranty

77300CXXYYSP \$15550/pr

Vinyl

01 LIGHT BLUE	02 ROYAL BLUE	03 RED	04 WHITE	05 ORANGE	06 YELLOW GOLD	08 TAN
09 GRAY	10 MAROON	11 PURPLE	12 BLACK	13 NAVY BLUE	14 KELLY GREEN	15 DARK GREEN

Powder Coat

01 LIGHT BLUE	02 ROYAL BLUE	03 RED	04 WHITE	05 ORANGE	06 YELLOW GOLD	07 SILVER	08 OLD GOLD
09 GRAY	10 MAROON	11 PURPLE	12 BLACK	13 NAVY BLUE	14 KELLY GREEN	15 DARK GREEN	



On all Gill Standards®
Call for Details.

*Excludes Essentials. 5 Year Warranty on Essentials.



77200C02

G4 POLE VAULT STANDARDS

- Constructed of heavy duty aluminum uprights and risers with custom glide parts for smooth operation
- Weighted steel base includes leveling feet and wheels for easy mobility
- Clamping mechanism pulls upright and riser together to hold desired height
- Height adjustment: 10' 3" to 21' with adjustable height readout window display
- Reads both English and Metric measurements
- 55mm bar rest pins and 8 base anchors included
- *Meets NFHS, NCAA, and World Athletics specifications, World Athletics certified*
- *10 year warranty*

77200CXX  \$6620/pr



S4 POLE VAULT STANDARDS

- Constructed of heavy duty aluminum uprights and risers with custom glide parts for smooth operation
- Weighted steel base includes wheels for easy mobility
- Clamping mechanism pulls upright and riser together to hold desired height
- Height adjustment: 7' to 18'
- Reads both English and Metric measurements
- *Meets NFHS and NCAA specifications*
- *10 year warranty*

77100 \$2815/pr



ESSENTIALS™ POLE VAULT STANDARDS

- Full steel tubing construction gives added strength
- Height adjustment: 6' to 16'
- Reads both English and Metric measurements
- Upright detaches from base rails for improved storage
- Wide stance base for added stability
- 75mm bar rest pins and 8 base anchors included
- *Meets NFHS specifications*
- *5 year warranty*

7100 \$1645/pr



AGX POLE VAULT STANDARD CARTS

Cart designed for easy transportation and storage of the AGX M4 Pole Vault Standard Uprights. Carts are sold in pairs.

73315020 \$1965



PV STANDARD UPRIGHT PAD

- Protects competitors, pole, and standards from harm
- Fits snug around the standard facing the inside of the pit
- Open back allows for setting of height and tightening of knobs
- High density foam in vinyl casing
- Customizable Color

731109CXX \$491/ea



71252 Shown

OFFSET EXTENSION

- 71252 adds additional 2' to Gill standards: 77100 and 77200CXX
- 71253 adds additional 4' to Gill standards: 77100 and 77200CXX
- Fits any standards with 1.25" square offsets
- Comes in safety orange color

71252 \$130/pr

71253 \$337/pr

HIGH JUMP STANDARDS



OFFICIAL EQUIPMENT SUPPLIER TO THE
NCAA TRACK & FIELD CHAMPIONSHIPS

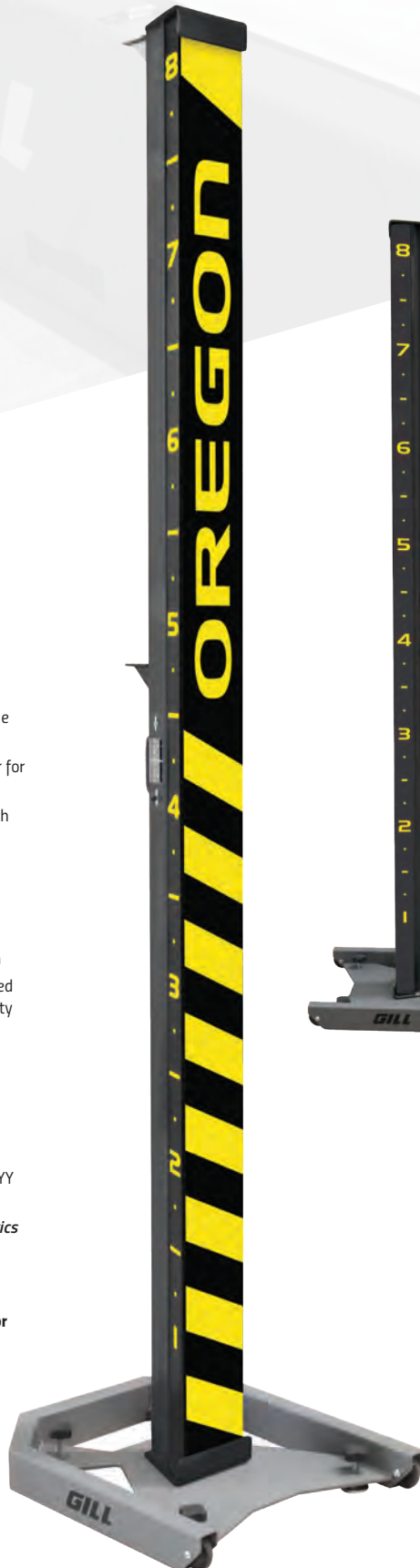
AGX M4 HIGH JUMP STANDARDS

- Simple height adjustments with unique thumb button and handle assist
- Choose your team's powder coat color for complete customization
- Customize exclusive 2" safety pad with choice of color and graphics
- High-visible English or Metric unit height indicator display for fans, coaches, and athletes
- Eye-level height indicator color coordinated with dual bar rest system
- Exclusive steel powder coated weighted base with wheels for increased stability and easy transportation
- Height range from 1' to 8' 3"
- Use the two-digit number of your vinyl color selection to replace XX in the item number
- Use the two-digit number of your powder coat color selection to replace YY in the item number
- Meets NFHS, NCAA, and World Athletics specifications
- 10 year warranty

740120CXXYYSP



\$3385/pr



AGX M4 HIGH JUMP BASE PADS

Specifically designed for AGX M4 High Jump Standards.

- Use the two-digit number of your vinyl color selection to replace XX in the item number

708CXX \$514/pr

Vinyl

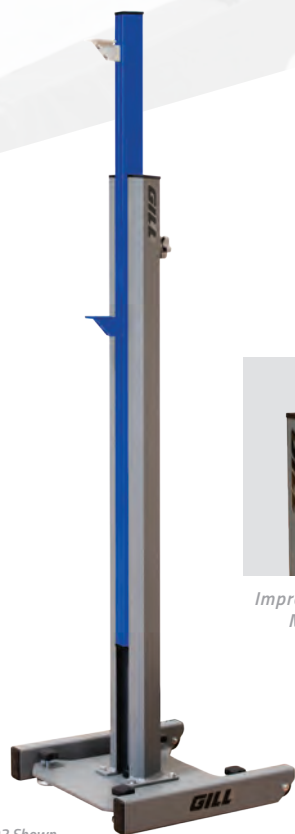


Powder Coat



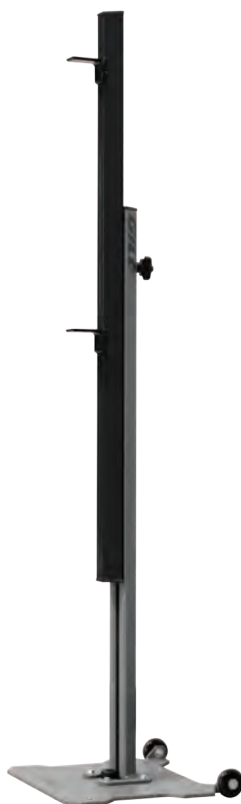
On all Gill Standards*
Call for Details.

*Excludes Essentials. 5 Year Warranty on Essentials.



Improved Clamping Mechanism

78200C02 Shown



G4 HIGH JUMP STANDARDS

- Constructed of heavy duty aluminum uprights and risers with custom glide parts for smooth operation
- Weighted steel base includes wheels for easy mobility and leveling feet
- Clamping mechanism pulls upright and riser together to hold desired height
- Height adjustment: 2'8" - 8'4" with adjustable height readout window display
- Reads both English and Metric measurements.
- Meets NFHS, NCAA and World Athletics specifications
- 10 year warranty

78200CXX \$2060/pr 

S4 HIGH JUMP STANDARDS

- Constructed of heavy duty aluminum uprights and risers with custom glide parts for smooth operation
- Weighted steel base includes wheels for easy mobility
- Clamping mechanism pulls upright and riser together to hold desired height
- Height adjustment: 2' - 7'4"
- Reads both English and Metric measurements
- Meets NFHS and NCAA specifications
- 10 year warranty

78105 \$1215/pr

ESSENTIALS™ HIGH JUMP STANDARDS

- Square steel construction with durable black powder coat finish
- Weighted base includes wheels for easy mobility
- Height adjustment: 2' to 8'
- Reads both English and Metric measurements
- Meets NFHS and NCAA specifications
- 5 year warranty

700 \$558/pr



HIGH JUMP STANDARD BASE PADS

- Provides additional safety during high jump event
- 2" thick foam pad encased in yellow vinyl

707 \$305/pr

LANDING SYSTEM ACCESSORIES



2534



OFFICIAL EQUIPMENT SUPPLIER TO THE
NCAA TRACK & FIELD CHAMPIONSHIPS



2535



PATENT NO. 8444531

PIT STOP

- 1/4" Powder coated steel plates
- 1/2" spikes on base secures the plate from shifting
- Pole Vault Pit Stop includes 2 base plates with a connector panel
- High Jump Pit Stop includes 1 base plate
- Compatible with any pole vault or high jump pit

2534	Pole Vault	\$1155
2535	High Jump	\$506

SAFETYMAX+™ VAULT BOX COLLAR



- Compatible with any style of landing system
- Spike Plate to reduce collar from slipping
- Complies with ASTM standard F2949
- Meets current NCAA and NFHS rules

719	SafetyMax+ Vault Box Collar	\$730
71904	Spike Plate Kit	\$275



VAULT PERIMETER PAD

- High school rule requires covering over all exposed hard surfaces surrounding the PV landing area
- 4' x 8' pad is 2" thick high density foam

716 \$529



FLAT BASE PADS

- Fits 28" tall Gill systems and all standards with center-mounted uprights

61517CXX \$1880/pr



LANDING SYSTEM TIE-DOWN KIT

- Decrease the chances of pit 'flying' away
- Increase safety and security of your pits

7081	With Concrete Anchors	\$97
7082	With Grass Anchors	\$64



SLOPED BASE PADS

- Fits 32" tall Gill systems and all standards with center-mounted uprights
- Adjustable measurement scale on top of pad
- Meets World Athletics specifications

61617CXX \$2955/pr



SLOPED AGX M2 BASE PADS

- Specifically designed for 77300CXXYYSP AGX M2 Pole Vault Standards.

61817CXX \$3095/pr



SLOPED AGX M4 BASE PADS

- Specifically designed for 740110CXXYYSP AGX M4 Pole Vault Standards.

61717CXX \$2560/pr



CUSTOMIZABLE BASE PADS

See color charts on page 7 to replace the XX in the item numbers.



ALUMINUM PIT CART

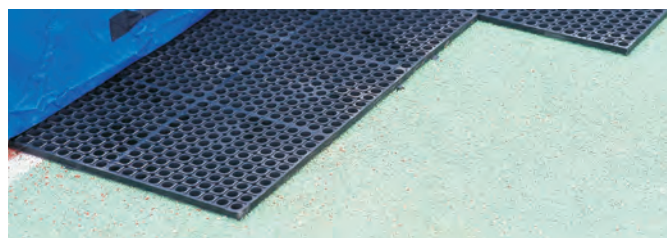
- Deck of cart measures 5' x 10'
- Constructed of quality aluminum planking
- Pneumatic caster wheels have a 12" diameter for easy travel over smooth and rough surfaces
- Deck height is optimal 19"

768 \$3690

WOOD DECK PIT CART

- Deck of cart measures 4' x 8'
- Constructed of MDO exterior plywood for improved weather resistance
- Pneumatic caster wheels have a 12" diameter for easy travel over smooth and rough surfaces
- Deck height is 16"

767 \$1835



PLATFORMS FOR LANDING SYSTEMS

- Support PV and HJ pits above the ground to prevent water damage
- Corrosion resistant aluminum or corrosion resistant rubber construction
- Consist of individual, easy to carry and convenient to store pallets

Aluminum

733641	Fits 64117 High Jump System	\$3765
733642	Fits 64217 High Jump System	\$5730
733644	Fits 64417 High Jump System	\$8845
733646	Fits 64617 High Jump System	\$6145
733648	Fits 64817 High Jump System	\$9370
733654	Fits 65417 Pole Vault System	\$10615
733662	Fits 66217 Pole Vault System	\$11340
733663	Fits 66317 and 65817 Pole Vault System	\$12435
733665	Fits 66517 Pole Vault System	\$14625
733668	Fits 66817 Pole Vault System	\$15405

Rubber

734641	Fits 64117 High Jump System	\$2505
734642	Fits 64217 High Jump System	\$2720
734644	Fits 64417 High Jump System	\$5375
734646	Fits 64617 High Jump System	\$2930
734648	Fits 64817 High Jump System	\$6030
734654	Fits 65417 Pole Vault System	\$6040
734662	Fits 66217 Pole Vault System	\$6220
734663	Fits 66317 and 65817 Pole Vault System	\$7500
734665	Fits 66517 Pole Vault System	\$8890
734668	Fits 66817 Pole Vault System	\$9580



WATER SHED INSERT

- Guaranteed to increase the life of your HJ and PV pits
- Prevents water pooling on your pit which destroys your foam

709 \$95

SHELTERS & BENCHES

PORTABLE TRACK SHELTER

Steel frame is mounted on swivel casters. 360 degree seating surrounds a center storage shelf. Roof frame is constructed of aluminum bracing with architectural gray powder coat. Canopy is tensioned with a one-piece vinyl wrap. Custom color and graphic application available on canopy top.

54240CXXSP Portable Track Shelter with Graphics \$6195



CUSTOMIZABLE

Vinyl



*Specify powder coat color with order, use the two-digit number of your color selection to replace XX in the item number.



ALUMINUM BENCHES

PORTABLE BENCHES

72081	8' Bench, Aluminum Finish	\$351
72081CXX	8' Bench, Powder Coat	\$383
72161	16' Bench, Aluminum Finish	\$525
72161CXX	16' Bench, Powder Coat	\$569



ALUMINUM BENCHES WITH BACKREST

PORTABLE BENCHES

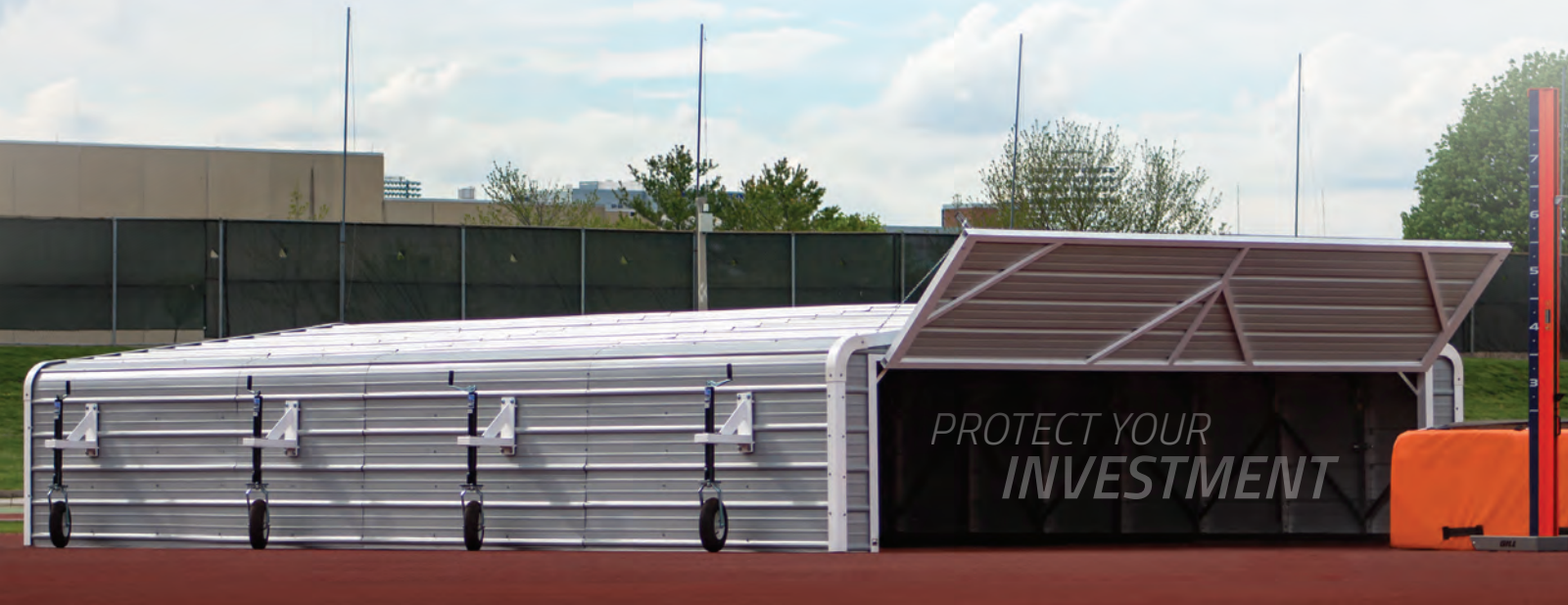
73081	8' Bench, Aluminum Finish	\$537
73081CXX	8' Bench, Powder Coat	\$592
73161	16' Bench, Aluminum Finish	\$864
73161CXX	16' Bench, Powder Coat	\$954

COLORS

Powder Coat



PIT GARAGES



PIT GARAGES

- Protect your PV or HJ investment from the elements
- Keep rain, snow, and vandals away
- Easily moves on and off position with the help of a few people
- Use the two-digit number of your color selection to replace XX in the item number

881018CXX	21' X 10' 6" High Jump Pits or Smaller	\$12935
881425CXX	28' 5" X 13' 8" High Jump Pits or Smaller	\$19355
882120CXX	20' 3" X 21' 11" Pole Vault Pits or Smaller	\$20225
883022CXX	22' X 32' Pole Vault Pits or Smaller	\$24845
GILLINSTALLHIG	High Jump Pit Garage Factory Installation	\$4655
GILLSTALLPVG	Pole Vault Pit Garage Factory Installation	\$5970

- Snow Load Kits available for areas with inclement weather

COLORS

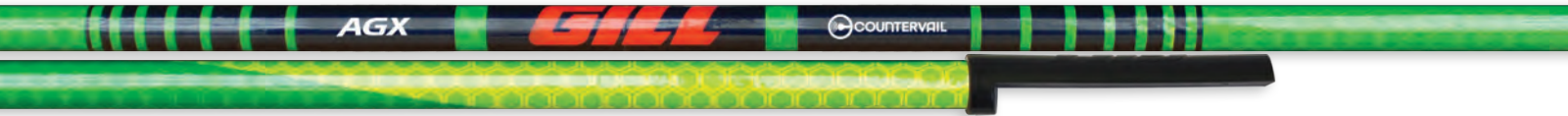


POLE VAULT



HIGH JUMP

CROSSBARS



AGX™ COUNTERVAIL CROSSBARS

- Includes high-end features of the AGX Crossbar with added Countervail™ Vibration Cancelling Technology
- Countervail strengthens the crossbar creating minimal sag
- Dampens 40% quicker than other crossbars
- Meets NFHS, NCAA and World Athletics specifications, World Athletics certified



535	High Jump	\$391
536	Pole Vault	\$399



AGX™ CROSSBARS

- Exclusive half moon profile ends lower the center of gravity of the bar
- Heaviest crossbar the rules allow
- Shorter, more stable, end pieces redesigned for improved performance
- Features durable thick-walled pultruded fiberglass rod
- Meets NFHS, NCAA and World Athletics specifications, World Athletics certified



INSPECT CROSSBARS FOR VISIBLE AND CONCEALED DAMAGE BEFORE ACCEPTING DELIVERY

CROSSBARS ARE NOT GUARANTEED AGAINST BREAKAGE

529	High Jump	\$176
530	Pole Vault	\$184



BEST SELLER!

GILL® COLLEGIATE CROSSBARS

- Features durable thick-walled pultruded fiberglass rod
- Minimum sag
- Order sets of three to help offset expensive shipping costs
- Meets NFHS, NCAA and World Athletics specifications, World Athletics certified

525	High Jump	\$129/ea
5253	High Jump (3)	\$369/set
526	Pole Vault	\$129/ea
5263	Pole Vault (3)	\$369/set



ESSENTIALS™ CROSSBARS

- Features durable pultruded fiberglass rod
- Excellent choice for high school competitions
- Order sets of three to help offset expensive shipping costs
- Meets NFHS specifications

522	High Jump	\$97/ea
5223	High Jump (3)	\$275/set
523	Pole Vault	\$97/ea
5233	Pole Vault (3)	\$275/set

3-PIECE CROSSBARS

- Crossbar kit that ships by UPS instead of truck
- Reduced shipping charges
- Can be shipped UPS overnight
- Utilizes same durable thick-walled pulltruded fiberglass as Collegiate Crossbars
- Meets NFHS and NCAA specifications



538 High Jump \$181

539 Pole Vault \$181



E73708



PV/HJ MEASURING STICK

- 59" tall aluminum measuring stick brings laser readout closer to eye level
- Use for both High Jump and Pole Vault events
- Simple to use: Utilize viewfinder to line up crossbar and press the button
- Measure in either English or Metric units
- Minimum measurement is 1.54m (5' 1/2"), No maximum measurement

E73708 Stick and Laser \$1300



PUTTER UPPER

- Simplest crossbar placer ever made
- Fits over the end of any vaulting pole

710390 \$27



TELESCOPING CROSSBAR PLACER

- Facilitate easy placement of crossbars at all heights
- Telescoping pole extends 6' to 12' in 6" increments
- Thumb mechanism allows for quick adjustment

950 \$176



ELASTIC CROSSBAND

- Training crossbar for PV and HJ
- Bright fluorescent orange elastic tubing
- 1" diameter foam sections

528 \$29

TEAMPACER.COM

 **PACER**[®]

ONE **FXV** COMPOSITE

LIVE
TO
VAULT





POLES

ONE



 **1** YEAR
WARRANTY

ON EVERY PACER POLE

**QUICK
SHIP** 

*AVAILABLE FOR ALL PACER
FIBERGLASS POLES*

A full-line of vaulting poles designed for every vaulter, allowing smooth transition from pole to pole no matter the length, weight, or model. The ONLY vaulting pole with a 1 Year warranty.

From novice to elite, Pacer has you covered.

THE PACER® ADVANTAGE

The Pacer® ONE is a versatile, economical pole perfect for the beginning vaulter. Our design patterns create a “slow down” of the bend allowing more time to rotate into a vertical position. Available 9’ to 13’ in 10 lb increments, the Pacer ONE is sure to get your vaulters to the next level. 1 Year Warranty.



9'
(2.75M)
\$397

ITEM #	TEST WT	TIP
527527	60 lb	21
527532	70 lb	21
527536	80 lb	21
527541	90 lb	21
527545	100 lb	21

11'
(3.35M)
\$466

ITEM #	TEST WT	TIP
533536	80 lb	21
533541	90 lb	21
533545	100 lb	21
533550	110 lb	21
533554	120 lb	21
533559	130 lb	21
533563	140 lb	21
533568	150 lb	21

12'6"
(3.81M)
\$535

ITEM #	TEST WT	TIP
537545	100 lb	21
537550	110 lb	21
537554	120 lb	21
537559	130 lb	18
537563	140 lb	18
537568	150 lb	16
537573	160 lb	16
537577	170 lb	16

10'
(3.10M)
\$420

ITEM #	TEST WT	TIP
531032	70 lb	21
531036	80 lb	21
531041	90 lb	21
531045	100 lb	21
531050	110 lb	21
531054	120 lb	21
531059	130 lb	21

11'6"
(3.51M)
\$489

ITEM #	TEST WT	TIP
535541	90 lb	21
535545	100 lb	21
535550	110 lb	21
535554	120 lb	21
535559	130 lb	21
535563	140 lb	21
535568	150 lb	21

13'
(3.96M)
\$558

ITEM #	TEST WT	TIP
540050	110 lb	18
540054	120 lb	18
540059	130 lb	18
540063	140 lb	16
540068	150 lb	16
540073	160 lb	13
540077	170 lb	13
540082	180 lb	13

10'6"
(3.20M)
\$443

ITEM #	TEST WT	TIP
532532	70 lb	21
532536	80 lb	21
532541	90 lb	21
532545	100 lb	21
532550	110 lb	21
532554	120 lb	21
532559	130 lb	21
532563	140 lb	21

12'
(3.66M)
\$512

ITEM #	TEST WT	TIP
536041	90 lb	21
536045	100 lb	21
536050	110 lb	21
536054	120 lb	21
536059	130 lb	18
536063	140 lb	18
536068	150 lb	16
536073	160 lb	16

VAULTING POLES ARE NOT
GUARANTEED AGAINST BREAKAGE

INSPECT VAULTING POLES FOR
VISIBLE AND CONCEALED DAMAGE
BEFORE ACCEPTING DELIVERY

COMPETITION POLE TIPS

Tough, durable polyurethane for a softer plant and long lasting performance.



700002, 700004, 700005, 700007, 700010, 700013, 700016, 700018, and 700021 **\$17/ea**

FXV



NEW! 5lb WT INCREMENTS

11'
(3.35M)
\$575

ITEM #	TEST WT	TIP
733536	80 lb	21
733539	85 lb	21
733541	90 lb	21
733543	95 lb	21
733545	100 lb	21
733547	105 lb	21
733550	110 lb	21
733552	115 lb	21
733554	120 lb	21
733557	125 lb	21
733559	130 lb	21
733561	135 lb	21
733563	140 lb	18
733566	145 lb	18
733568	150 lb	18

11'6"
(3.51M)
\$610

ITEM #	TEST WT	TIP
735039	85 lb	21
735041	90 lb	21
735043	95 lb	21
735045	100 lb	21
735047	105 lb	21
735050	110 lb	21
735052	115 lb	21
735054	120 lb	18
735057	125 lb	18
735059	130 lb	18
735061	135 lb	18
735063	140 lb	16
735066	145 lb	16
735068	150 lb	16

12'
(3.66M)
\$644

ITEM #	TEST WT	TIP
736045	100 lb	21
736047	105 lb	21
736050	110 lb	21
736052	115 lb	21
736054	120 lb	21
736057	125 lb	21
736059	130 lb	18
736061	135 lb	18
736063	140 lb	18
736066	145 lb	18
736068	150 lb	18
736070	155 lb	18
736073	160 lb	18

12'6"
(3.81M)
\$679

ITEM #	TEST WT	TIP
737545	100 lb	21
737547	105 lb	21
737550	110 lb	21
737552	115 lb	18
737554	120 lb	18
737557	125 lb	18
737559	130 lb	18
737561	135 lb	18
737563	140 lb	16
737566	145 lb	16
737568	150 lb	16
737570	155 lb	16
737573	160 lb	16
737575	165 lb	16
737577	170 lb	16

13'
(3.96M)
\$713

ITEM #	TEST WT	TIP
740050	110 lb	18
740052	115 lb	18
740054	120 lb	18
740057	125 lb	18
740059	130 lb	18
740061	135 lb	18
740063	140 lb	16
740066	145 lb	16
740068	150 lb	16
740070	155 lb	16
740073	160 lb	13
740075	165 lb	13
740077	170 lb	13
740080	175 lb	13
740082	180 lb	10

13'6"
(4.11M)
\$748

ITEM #	TEST WT	TIP
741554	120 lb	16
741557	125 lb	16
741559	130 lb	16
741561	135 lb	16
741563	140 lb	16
741566	145 lb	16
741568	150 lb	13
741570	155 lb	13
741573	160 lb	13
741575	165 lb	13
741577	170 lb	10
741580	175 lb	10

THE PACER® ADVANTAGE

The Pacer® FXV vaulting pole is the flagship series of our Pacer line-up. With a design to perform well for all styles of jumpers, the lightweight s-glass is designed for smooth, consistent response as vaulters transition from pole to pole. The Pacer FXV is the perfect pole for greater heights and maximum PRs. Available 11' to 16'9" in 5lb increments. 1 Year Warranty.



14'
(4.27M)
\$782

ITEM #	TEST WT	TIP
742557	125 lb	16
742559	130 lb	16
742561	135 lb	13
742563	140 lb	13
742566	145 lb	13
742568	150 lb	13
742570	155 lb	13
742573	160 lb	13
742575	165 lb	10
742577	170 lb	10
742580	175 lb	7
742582	180 lb	7

15'
(4.57M)
\$851

ITEM #	TEST WT	TIP
746063	140 lb	10
746066	145 lb	10
746068	150 lb	10
746070	155 lb	10
746073	160 lb	10
746075	165 lb	7
746077	170 lb	7
746080	175 lb	7
746082	180 lb	5
746084	185 lb	5

16'1
(4.90M)
\$995

ITEM #	TEST WT	TIP
749073	160 lb	10
749075	165 lb	10
749077	170 lb	7
749080	175 lb	7
749082	180 lb	5
749084	185 lb	5
749086	190 lb	4
749088	195 lb	4
749091	200 lb	4

14'6
(4.42M)
\$817

ITEM #	TEST WT	TIP
744059	130 lb	13
744061	135 lb	13
744063	140 lb	10
744066	145 lb	10
744068	150 lb	10
744070	155 lb	10
744073	160 lb	10
744075	165 lb	10
744077	170 lb	7
744080	175 lb	7
744082	180 lb	7
744084	185 lb	7

15'6
(4.72M)
\$943

ITEM #	TEST WT	TIP
747068	150 lb	10
747070	155 lb	10
747073	160 lb	7
747075	165 lb	7
747077	170 lb	5
747080	175 lb	5
747082	180 lb	4
747084	185 lb	4
747086	190 lb	4
747088	195 lb	4

16'5
(5.01M)
\$1105

ITEM #	TEST WT	TIP
750077	170 lb	7
750080	175 lb	7
750082	180 lb	7
750084	185 lb	5
750086	190 lb	5
750088	195 lb	4
750091	200 lb	4

16'9
(5.11M)
\$1180

ITEM #	TEST WT	TIP
751084	185 lb	5
751086	190 lb	5
751088	195 lb	4
751091	200 lb	4
751093	205 lb	4

COMPOSITE



13'
(3.96M)
\$840

ITEM #	TEST WT	TIP
340050	110 lb	21
340052	115 lb	18
340054	120 lb	18
340057	125 lb	18
340059	130 lb	18
340061	135 lb	18
340063	140 lb	18
340066	145 lb	18
340068	150 lb	16
340070	155 lb	16
340073	160 lb	16

14'
(4.27M)
\$963

ITEM #	TEST WT	TIP
342557	125 lb	16
342559	130 lb	16
342561	135 lb	16
342563	140 lb	16
342566	145 lb	16
342568	150 lb	13
342570	155 lb	13
342573	160 lb	13
342575	165 lb	13
342577	170 lb	13
342580	175 lb	13
342582	180 lb	10

15'
(4.57M)
\$1170

ITEM #	TEST WT	TIP
346063	140 lb	13
346066	145 lb	10
346068	150 lb	10
346070	155 lb	10
346073	160 lb	10
346075	165 lb	10
346077	170 lb	10
346080	175 lb	10
346082	180 lb	7
346084	185 lb	7
346086	190 lb	7

13'6"
(4.11M)
\$907

ITEM #	TEST WT	TIP
341554	120 lb	18
341557	125 lb	18
341559	130 lb	18
341561	135 lb	16
341563	140 lb	16
341566	145 lb	16
341568	150 lb	16
341570	155 lb	16
341573	160 lb	13
341575	165 lb	13
341577	170 lb	13
341580	175 lb	13

14'6"
(4.42M)
\$1025

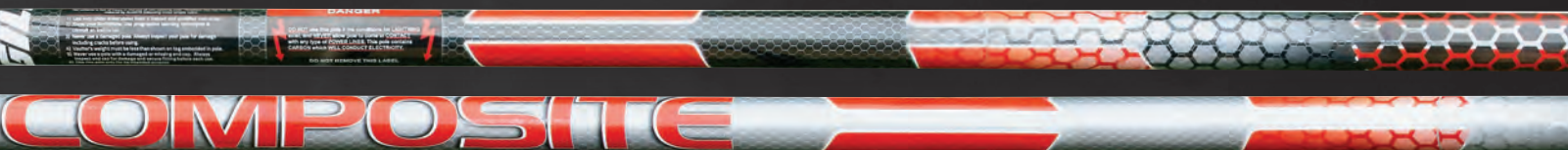
ITEM #	TEST WT	TIP
344059	130 lb	13
344061	135 lb	13
344063	140 lb	13
344066	145 lb	10
344068	150 lb	10
344070	155 lb	10
344073	160 lb	10
344075	165 lb	10
344077	170 lb	10
344080	175 lb	10
344082	180 lb	10
344084	185 lb	10
344086	190 lb	7
344088	195 lb	7

15'6"
(4.72M)
\$1235

ITEM #	TEST WT	TIP
347068	150 lb	10
347070	155 lb	10
347073	160 lb	10
347075	165 lb	10
347077	170 lb	10
347080	175 lb	10
347082	180 lb	7
347084	185 lb	7
347086	190 lb	5
347088	195 lb	5

THE PACER® ADVANTAGE

For advanced aggressive vaulters, the Pacer® COMPOSITE is the lightest pole on the market with increased tensile strength and superior energy return. The patent-pending design blends T2-Fiber™, S-Glass, and carbon fiber to create a robust and durable composite construction. The Pacer COMPOSITE is designed for vaulters to raise the bar. Available 13' to 16'9" in 5lb increments. 1 Year Warranty.



16'1
(4.90M)
\$1290

ITEM #	TEST WT	TIP
349073	160 lb	10
349075	165 lb	10
349077	170 lb	10
349080	175 lb	10
349082	180 lb	7
349084	185 lb	7
349086	190 lb	5
349088	195 lb	5
349091	200 lb	5

16'5
(5.01M)
\$1395

ITEM #	TEST WT	TIP
350077	170 lb	10
350080	175 lb	7
350082	180 lb	7
350084	185 lb	7
350086	190 lb	5
350088	195 lb	5
350091	200 lb	4
350093	205 lb	4
350095	210 lb	4

16'9
(5.11M)
\$1440

ITEM #	TEST WT	TIP
351084	185 lb	5
351086	190 lb	5
351088	195 lb	4
351091	200 lb	4
351093	205 lb	4
351095	210 lb	4
351097	215 lb	2

**WE RAISED
THE BAR SO
YOU CAN TOO.**

VAULTING POLES ARE NOT
GUARANTEED AGAINST BREAKAGE

INSPECT VAULTING POLES FOR
VISIBLE AND CONCEALED DAMAGE
BEFORE ACCEPTING DELIVERY

COMPETITION POLE TIPS

Tough, durable polyurethane for a softer plant and long lasting performance.



700002, 700004, 700005, 700007, 700010,
700013, 700016, 700018, and 700021 **\$17/ea**

POLE BAGS & ACCESSORIES



CUSTOM POLE BAG

- Customize for your school's personality!
- Holds at least five vaulting poles
- Shoulder strap for ease of transportation
- Heavy duty vinyl and leather reinforced ends for long life
- Made to fit 6" corrugated drain tube (not included)
- Use the two-digit number of your vinyl color selection (Page 10) to replace the XX in the item number

8008##CXX 10' - 18' Custom Pole Bag \$644

*Use two-digit number of desired pole bag length to replace '##' in part number. 10'-18' lengths available.

ESSENTIALS™ POLE BAG

- Holds at least five vaulting poles
- Heavy duty polyester for long life
- Maximum length is 15'
- Made to fit 6" corrugated drain tube (not included)

800801 \$142

ELITE POLE BAG

- Holds at least five vaulting poles
- Heavy duty vinyl and leather reinforced ends for long life
- Adjustable from 14' 6" to 17' 6"
- Made to fit 6" corrugated drain tube (not included)

800802 \$273



VAULT TRAINER SYSTEM

- Unique device for beginner and intermediate vaulters
- Allows athlete to acclimate the body to positions occurring during peak vault height
- Strengthens muscle groups for effective push off
- Helps to coordinate grip and pole positions while rotating around pole for push off

TA190 \$423



PACER® GIZMO

- Practice vaulting while safely on the ground
- Allows athlete to mimic complex movements that occur in the air while firmly on your feet
- Three cord system to accommodate your specific level of strength and coordination
- Vault specific training device designed to take you to the next level

700231 Small Grip \$326

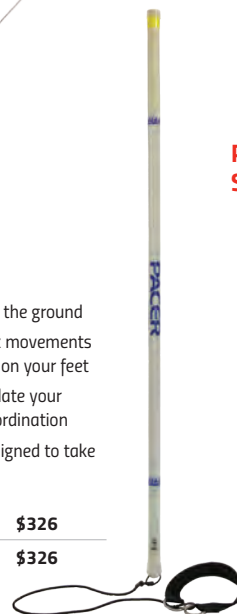
700232 Large Grip \$326



PERFECT PLANT SLIDING VAULT BOX

- Sliding vault box allows vaulters to perfect the run, plant, and take-off
- Pole carriage, run mechanics, tempo, and step placement are more effectively learned using this training tool
- Tip proof design has a built in handle, a zero mark molded into the side for placement accuracy
- Constructed of a high-impact thermoplastic

2531 \$709





CHALK STAND

- Store chalk during practice and competition
- Lightweight stand features a wide opening for hands, a pocket for extra chalk, and rungs for hanging accessories or resting vaulting poles

WE305 Chalk Stand **\$406**

700250 1 lb Sports Chalk **\$22**



PORTABLE POLE RACK

- Convenient way to store and protect your poles during meets and practice
- Free standing pole rack made of heavy duty steel with durable powder coat finish

725 **\$344**



INTERNATIONAL POLE CART

- Built to hold all the vaulting poles you own
- Made of sturdy steel with high end design
- Dual purposed wheels switch from swivel to locked position in a snap

733180 Cart **\$1595**

735 Tow Bar Kit **\$247**



REPLACEMENT POLE VAULT WEIGHT LABEL

When ordering online you will receive an email requesting further information to complete this order



WT LABEL **\$6.50**



GRRRIP PLUS LOTION

- Scientifically formulated mixture developed to enhance hand-grip up to 75% better
- Fluid mixes with natural skin oils to create a moisture barrier yet still allows the skin to breathe
- More convenient and cleaner than chalk

700253 **\$17**



POLE VAULT GRIP TAPE

- 12 ½ yard roll of colored adhesive tape
- 1 ½" width

700259 White (15 yds) **\$13**

700260 Red **\$13**

700261 Maroon **\$13**

700262 Gold **\$13**

700263 Green **\$13**

700264 Royal **\$13**

700265 Purple **\$13**

700266 Black **\$13**

700267 Pink **\$13**



GRAPHIC POLE VAULT GRIP TAPE

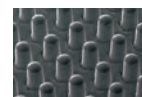
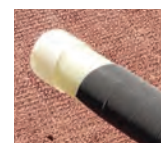
- 20 yard roll of adhesive design tape
- Camo/flag designs come in 2" width
- Jolly Roger design comes in 1" width

700273 USA Flag **\$24**

700271 Pink Camo **\$24**

700272 Winter Camo **\$24**

700274 Jolly Roger **\$24**



Microscopic detail of grip technology.

NINJA ELITE POLE VAULT GRIP TAPE

- Lab-designed with thousands of gripping 'fingers'
- Grip lighter and hold tighter
- No additional substances needed (chalk, sticky spray, etc)
- Slip resistant, vibration dampening and easy release properties
- Water and oil resistant

700281 9' x 1" **\$29**

RECORDS
ARE MADE
TO BE
BROKEN

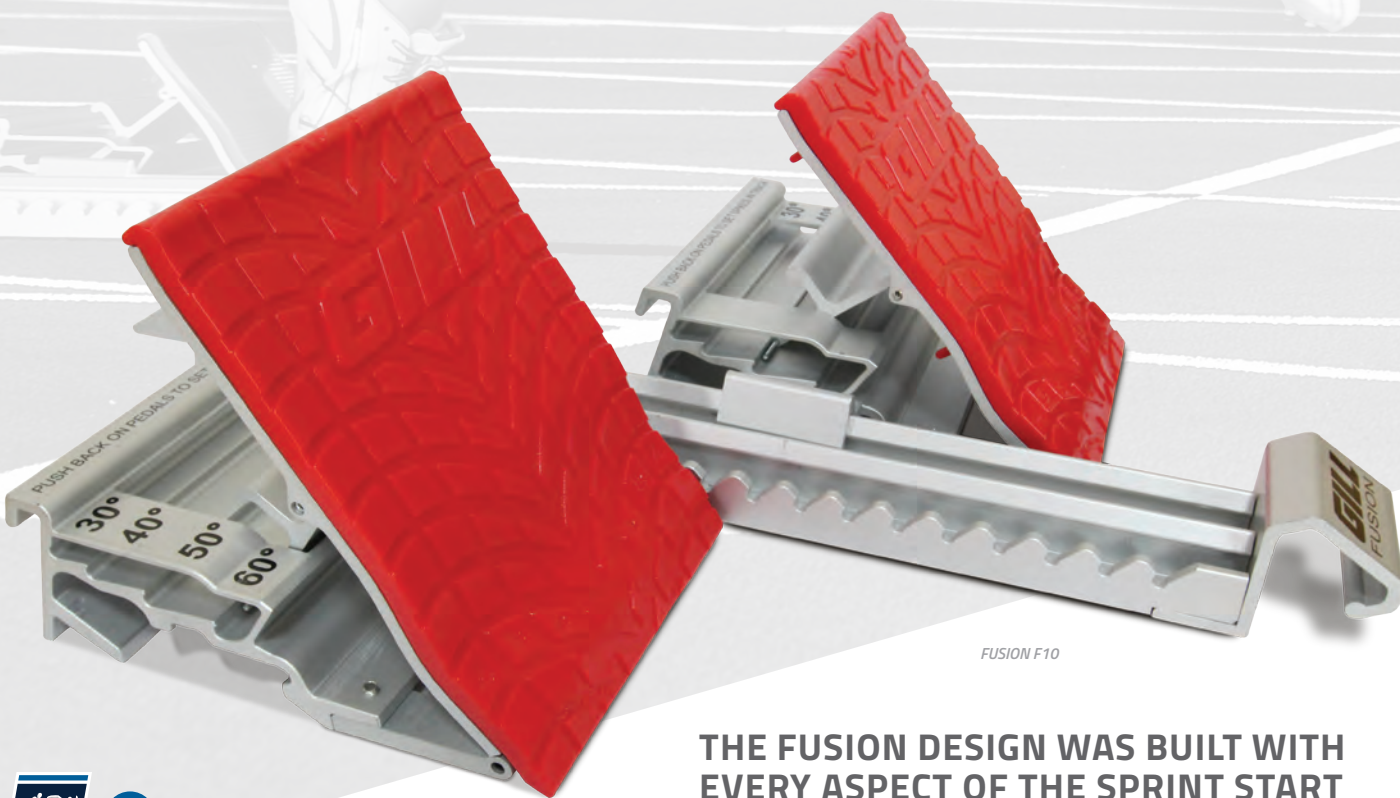




SPRINTS & HURDLES

FUSION™

FASTER STARTS THROUGH
ADVANCED TECHNOLOGY



FUSION F10

THE FUSION DESIGN WAS BUILT WITH EVERY ASPECT OF THE SPRINT START IN MIND, AND THE RESULT IS THE BEST STARTING BLOCK IN EXISTENCE.



OFFICIAL EQUIPMENT SUPPLIER TO THE
NCAA TRACK & FIELD CHAMPIONSHIPS



FUSION™ F10 STARTING BLOCK

- Exclusive 8" x 10" pedal allows full heel support for the best starts
- Precise and consistent foot placement is ensured using integrated pedal markings
- Angled spikes in base of pedals guarantee no slipping
- Built in handle allows for easy carriage between locations
- Pedals adjustable to 30°, 40°, 50°, 60°
- Meets NFHS, NCAA and World Athletics specifications, World Athletics certified

730183C02	Royal Blue		\$726
730183C03	Red		\$726
730183C05	Orange		\$726
730183C12	Black		\$726
730183C15	Dark Green		\$726



Adjust Fusion pedals to four different angles to fit your starting style.



Handle provides easy transport.



FUSION F4, F8, & F10

PAT. NO. 6,929,585 & 7,156,775

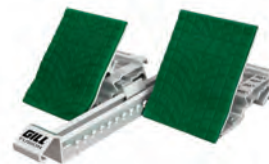
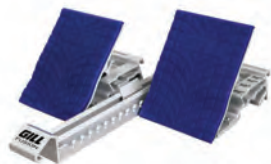


FUSION F4

FUSION F10

FUSION F8

MORE FUSION COLOR OPTIONS



FUSION™ F8 STARTING BLOCK



- Exclusive 8" x 8" pedals designed for a more aggressive acceleration pattern
- Meets NFHS, NCAA and World Athletics specifications, World Athletics certified

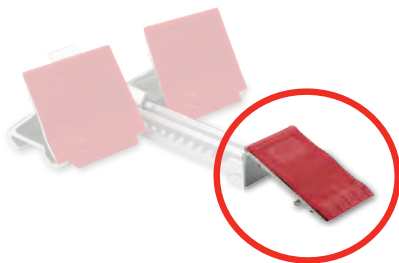
730182C02	Royal Blue		\$680
730182C03	Red		\$680
730182C05	Orange		\$680
730182C12	Black		\$680
730182C15	Dark Green		\$680

FUSION™ F4 STARTING BLOCK



- Standard 4" x 8" pedals
- Meets NFHS, NCAA and World Athletics specifications, World Athletics certified

730181C02	Royal Blue		\$572
730181C03	Red		\$572
730181C05	Orange		\$572
730181C12	Black		\$572
730181C15	Dark Green		\$572



MOYE™ PEDAL ADAPTER

Converts any Fusion block into a Moye style block

730168 \$109

STARTING BLOCKS



G2 STARTING BLOCK

- Aircraft aluminum construction for maximal lifespan
- Pedals adjust to 45°, 55°, 65°, 75°
- Ruled decal in rail allows quick, easy, repeatable pedal set-up
- Includes ½" pyramid spikes for synthetic tracks
- Meets World Athletics, NCAA and NFHS specifications

410C02	Royal Blue	\$266
410C03	Red	\$266
410C12	Black	\$266

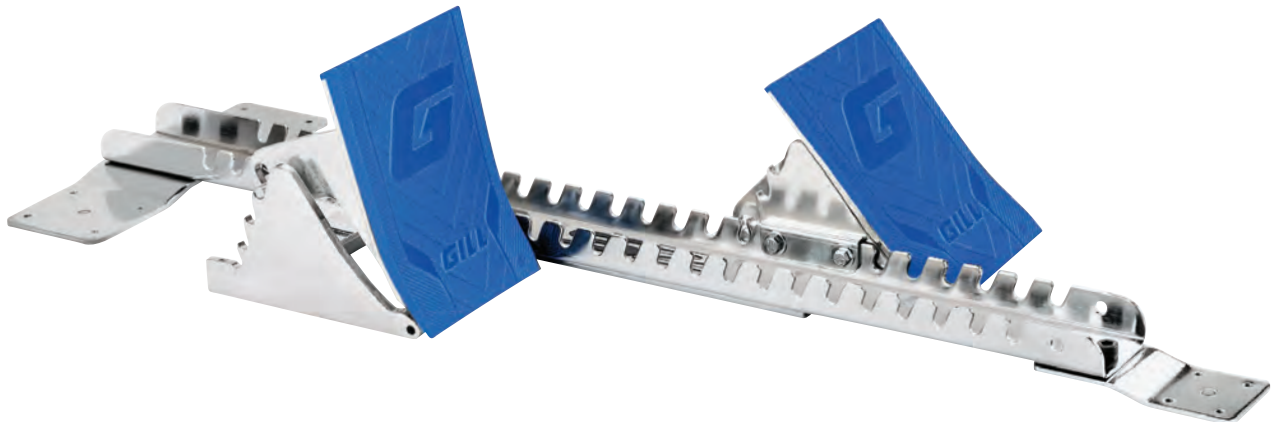
PAD COLORS

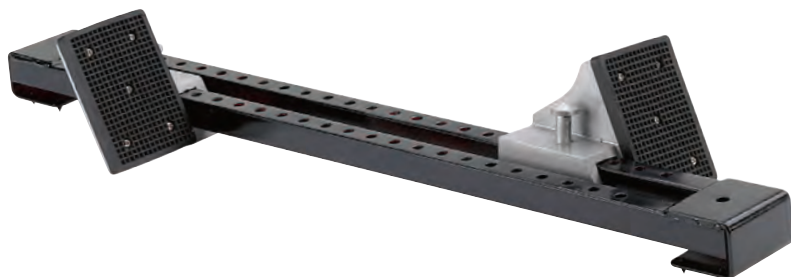


S2 STARTING BLOCK

- Polished steel rail with cast aluminum pedals
- Pedals adjust to 45°, 55°, 65°, 75°
- Ruled decal in rail allows quick, easy, repeatable pedal set-up
- Includes ½" pyramid spikes for synthetic tracks
- Meets NCAA and NFHS specifications

412C02	Royal Blue	\$168
412C03	Red	\$168
412C12	Black	\$168





ESSENTIALS™ STARTING BLOCK

- One piece, all steel construction with durable black powder coat finish
- Standard width pedals with rubber pads
- Change pedal positions with simple Spring Lock Adjustment
- Features built in spikes to eliminate slipping
- *Meets NFHS specifications*

416 \$113

VP416 \$1230

INCLUDED: (1) Essentials Block Cart, (8) Essentials Starting Blocks



INDOOR STARTING BLOCK

- No nails, pins or holes needed to hold in place
- Foot pressure on the flaps provide a non-slip start

417 \$49



GILL® INTERNATIONAL STARTING BLOCK CART

- Holds up to 10 starting blocks horizontally
- Handle is included for easy transport
- Includes a storage shelf for loose pedals and accessories
- Steel construction with durable, architectural gray powder coat finish

733190 \$2230



ESSENTIALS™ BLOCK CART

- Holds up to 10 starting blocks
- Steel construction with durable black powder coat finish

923 \$460



GILL® TRANSPORTER STARTING BLOCK CART

- Holds up to 16 starting blocks; any style
- Large wheels make transportation easy
- Steel construction with durable black powder coat finish

9311 \$903

HURDLES

CONTINUUM™

THE WORLD'S FASTEST HURDLE IS ALSO THE WORLD'S SAFEST

CONTINUUM™ AUTOMATIC HURDLES

The Continuum™ hurdle is designed to be the safest, fastest, and most unobtrusive hurdle that the rules will allow, all accomplished by placing the gateboard directly over the pivot point (tip-over-fulcrum).

- Internal leg weight from Continuum looping mechanism creates the most reliable, hassle-free automatic hurdle
- Robust C4 & C5 hurdle frames feature reinforced gusseted elbows for unparalleled strength
- Exclusive extrusion gatetubes allow for graphic customization C4 & C5 hurdles.
- C4 & C5 hurdles utilize a unique inner leg vertical height indicator for no-mistake height settings (30", 33", 36", 39", 42")
- Internalized weight mechanism of C4 & C5 hurdles creates whole-unit hurdle reducing maintenance and upkeep
- **Meets NFHS, NCAA and World Athletics specifications**
- **5 year warranty**



Automatic Hurdle U.S. Patents #9,486,714 | #9,427,677



On all Gill Hurdles*
Call for Details.

*Excludes Essentials



OFFICIAL EQUIPMENT SUPPLIER TO THE
NCAA TRACK & FIELD CHAMPIONSHIPS

NEW!

CONTINUUM™ C3 AUTOMATIC HURDLE

408CXX	41"		\$575
408CXX	47"		\$575



C3 Hurdle thumb buttons allow for quick click setting and smooth hurdle height adjustments.

CONTINUUM™ C4 AUTOMATIC HURDLE

1041CXX	41"		\$841
1047CXX	47"		\$841



Patented C4 Hurdle dual hand trigger mechanism creates zero-click continuous transitions between any height.

NEW!

PATENT PENDING

CONTINUUM™ C5 AUTOMATIC HURDLE

1241CXX	41"		\$1100
1247CXX	47"		\$1100



Patent pending C5 Hurdle Quick-Step™ foot pedal allows for smooth continuous transitions between any height.



CUSTOM GATETUBES

Available on Continuum C4/C5 hurdles.

CUSTOM COLORS

Gatetubes available in a variety of bright and durable powder coat colors at no extra cost.



*Replace XX in the item number with the two-digit number of your color selection.

Color Rendering Feature
at GillAthletics.com

HURDLES



CUSTOM GATEBOARDS

ULTIMATE CUSTOM GATEBOARD PRINTING

Customize your hurdle boards with four color printing and show off your hurdles!

946 59 or Less Hurdles \$96/order
60 or More Hurdles FREE



STANDARD CUSTOM GATEBOARD PRINTING

Customize your hurdle boards with standard gateboard printing. Uppercase letters printed in single color.

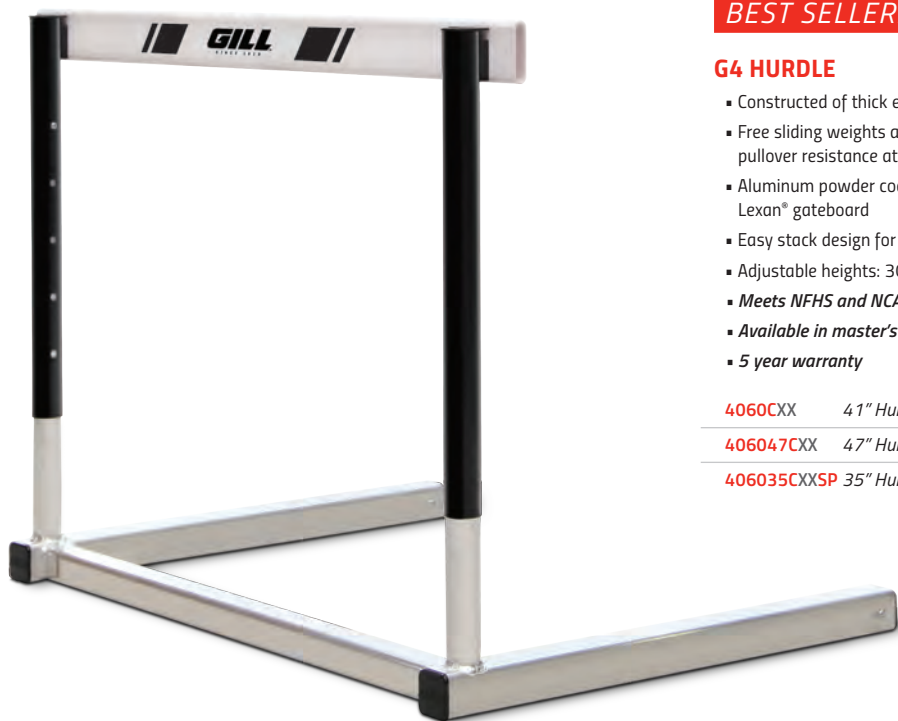
945 59 or Less Hurdles \$46/order
60 or More Hurdles FREE



REPLACEMENT BOARDS & PARTS



visit us online: GillAthletics.com



BEST SELLER!

G4 HURDLE

- Constructed of thick extruded aircraft aluminum
- Free sliding weights adjust quickly to official pullover resistance at all heights
- Aluminum powder coated gatetubes and Lexan® gateboard
- Easy stack design for better stacking and portability
- Adjustable heights: 30", 33", 36", 39", 42"
- *Meets NFHS and NCAA specifications*
- *Available in master's competition hurdle sizes*
- *5 year warranty*

4060CXX	41" Hurdle	\$306
406047CXX	47" Hurdle	\$336
406035CXXSP	35" Hurdle	\$351

CUSTOMIZABLE HURDLES

Gatetubes available in a variety of bright and durable powder coat colors at no extra cost.





Color Rendering Feature at GillAthletics.com

**Replace XX in the item number with the two-digit number of your color selection.*



G6 HURDLE

- Constructed of thick extruded aircraft aluminum
- Manual weight adjustment to meet precise official pullover force at each height
- Aluminum powder coated gatetubes and Lexan® gateboard
- Easy stack design for better stacking and portability
- Adjustable heights: 30", 33", 36", 39", 42"
- *Meets NFHS, NCAA and World Athletics specifications, World Athletics certified*
- *5 year warranty*

406CXX	41" Hurdle	 \$338
40647CXX	47" Hurdle	 \$352
40635CXXSP	35" Hurdle	\$366

HURDLES



CUSTOMIZABLE HURDLES

See color charts on page 39 to replace the XX in the item numbers.



PRO TIP: Hurdles are packaged in two per box. Order in even numbers to improve shipping.

GILL ESSENTIALS™ HURDLE

- All aluminum construction
- Economical hurdle that meets official pullover resistance at all heights
- Rigid double-crossbar design ensures superior durability
- Lexan gateboard
- Adjustable heights: 27", 30", 33", 36", 39", 42"
- Meets NFHS specifications
- 1 year warranty
- Assembly required

401CXX 41" Hurdle \$155

S1 HURDLE

- Strong all aluminum design
- Unmatched value for high school programs
- Aluminum powder coated gatetubes and Lexan® gateboard
- Adjustable heights: 30", 33", 36", 39", 42"
- Meets NFHS specifications
- 5 year warranty
- Assembly required

411CXX 41" Hurdle \$183

S2 HURDLE

- Powder coated steel U-shaped single cross support design
- Single cross support allows for easy carriage and unhindered plyometric drills
- Aluminum powder coated gatetubes and Lexan® gateboard
- Adjustable heights: 30", 33", 36", 39", 42"
- Meets NFHS specifications
- 5 year warranty
- Assembly required

403CXX 41" Hurdle \$216

40335CXX 35" Hurdle \$288

HURDLE CART

- Unique walk-in design
- Steel construction with durable black powder coat finish
- Large swivel casters for easy transportation
- Compatible with both rocker and 'L' shaped hurdles

4010 41" Hurdle Cart (Holds 8-10) \$796

4020 41" Hurdle Cart (Holds 18-20) \$1275

4036 35" Hurdle Cart (Holds 8-10) \$1470



HURDLE PORTER

- Easy convenient way to move 8-10 hurdles
- Steel construction with durable black powder coat finish
- Compatible with 'L' shaped hurdles only

4210 41" Hurdle Porter \$571



FOAM HURDLE BOARD GUARD

- Easily attaches to hurdle for maximum protection against injury

403BG Guard \$17/ea

403BG10 Guards (10) \$153/set

BEST SELLER!

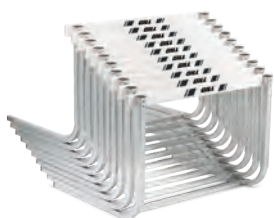
S4 HURDLE

- Best selling high school hurdle for elite programs
- Aluminum square tube construction
- Welded cross support design provides unrivalled durability
- Aluminum powder coated gatetubes and Lexan® gateboard
- Gatetubes allow for GRAPHIC customization
- Adjustable heights: 30", 33", 36", 39", 42"
- *Meets NFHS specifications*
- *5 year warranty*
- *Ships assembled*

402CXX	41" S4 Hurdle	\$256
402TCXXSP	41" Hurdle with Gatetube Graphics	\$272



**CUSTOMIZABLE
GATETUBES**



Easy stack design for better storage and portability

**CUSTOMIZABLE
HURDLES**

Gatetubes available in a variety of bright and durable powder coat colors at no extra cost.



**Replace XX in the item number with the two-digit number of your color selection.*

Color Rendering Feature at GillAthletics.com

GILL® FLIGHT HURDLE CART

- World's most convenient and efficient hurdle cart
- Four wheel design provides superior moveability compared to corner cutting three wheel designed carts
- Sturdy steel construction with durable black powder coat finish
- Efficiently supports up to 10 hurdles at a time

4630	41" Hurdle Cart	\$569
4631	47" Hurdle Cart	\$658



HURDLE CART WEATHER COVER

733630CXX	41" Cart Weather Cover	\$395
733631CXX	47" Cart Weather Cover	\$395
733630CXXSP	41" Cart Weather Cover with Graphics	\$463
733631CXXSP	47" Cart Weather Cover with Graphics	\$463

**CUSTOMIZABLE
COVER**



**Replace XX in the item number with the two-digit number of your vinyl color selection.*

NEVER
GIVEN
ALWAYS
EARNED





MEETS

ELECTRONICS & INDICATORS



OFFICIAL EQUIPMENT SUPPLIER TO THE
NCAA TRACK & FIELD CHAMPIONSHIPS

TIMER AND DISPLAY

- Lightweight with rugged rubber bumpers for increased durability
- Countdown timer has various pre-programmed times
- Three brightness intervals adjust to your specific needs
- Also used as an elapsed time clock for CC, road races, and the track
- Countdown can be set for durations up to 99 minutes
- Anti-glare 6" x 3" digits
- Includes tripod, 120V adapter plug, and 12V internal battery
- External battery can be connected if needed
- Connect to Gill Ultrasonic Wind Gauge to display wind reading continuously or at 10 second intervals

E49821	<i>Single Sided</i>	\$1460
E49822	<i>Double Sided</i>	\$1970
E39820B	<i>Optional External Battery</i>	\$108



ULTRASONIC WIND GAUGE 2.0

- Highly visible backlit display improved for officials accuracy
- Special cable from Lynx required for Lynx interface
- Includes tripod, AC adapter, and padded protective case
- World Athletics: ultrasonic wind gauges shall be used at all International Competitions (Rule 1.1 (a) through (h))

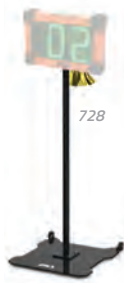
E49810 **\$2700**

COMPACT WIND GAUGE KIT

- Displays Wind Reading in Meters Per Second
- Accuracy: +/- 0.010 m/s
- Meets NFHS, NCAA, and World Athletics specifications
- Includes tripod and carry case

E39815 **\$426**



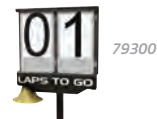


2 DIGIT ELECTRONIC DISPLAY

- Use as a PV standard indicator, wind reading indicator unit, or lap counter.
- 6" digits with 3 stage dimming feature
- Quality carry/storage case included
- Lap Counter Display Stand sold separately

E49872 2 Digit Electronic Display **\$725**

728 Lap Counter Display Stand **\$536**



PERFORMANCE INDICATORS

- 9" numerals
- Rotates 360° for visibility
- Aluminum construction with steel roll away base
- Powder coated black

79300 2 Digit Lap Counter with Bell **\$872**

79400 2 Digit Pole Vault Display **\$975**

79100 4 Digit Scholastic Performance Indicator **\$1100**

79200 5 Digit National Performance Indicator **\$1310**



LYNX COMPATIBLE
EAGLE EYE COMPATIBLE

LED SCROLLING DISPLAY

- Displays event standings, upcoming races and more
- Update information easily with provided software
- Software is designed to run in background when using Lynx, scrolls track event times/places as Lynx System files results
- Sixteen 4" tall characters maximum displayed at one time
- Power options: 120V power cord (included) or 12V battery (sold separately)
- **Carrying case included**

E39860 Scrolling Display **\$2935**

E39820B 12V Battery **\$108**



LYNX COMPATIBLE
EAGLE EYE COMPATIBLE

GILL 9" DIGIT RACE CLOCKS

- Six digit race clocks in 9" tall digits
- Count-up/count-down capability in seconds or hundredths of seconds
- Features end-mounted controls for direct operation
- Power options: 120V AC (included) or external 12V battery (sold separately)
- **Optional carrying case available (sold separately)**
- **Tripod and remote control included**

E39851 Race Clock **\$2260**

E39853 Double-Sided Race Clock **\$3170**

E39858 Carrying Case **\$851**

E39820B 12V Battery **\$108**

MEASURING DEVICES



FIBERGLASS MEASURING TAPES

- Durable vinyl-coated fiberglass tape
- More flexible than cloth tapes and won't kink or break when twisted or stepped on
- Measures in both English and Metric units
- *C = closed reel; O = open reel*

984	50' (15m)	C	\$16
985	100' (30m)	O	\$21
987	165' (50m)	O	\$31
986	200' (60m)	O	\$40
988	300' (90m)	O	\$59
989	330' (100m)	O	\$64



STEEL MEASURING TAPES

- Coated with durable epoxy finish
- *C = closed reel; O = open reel*

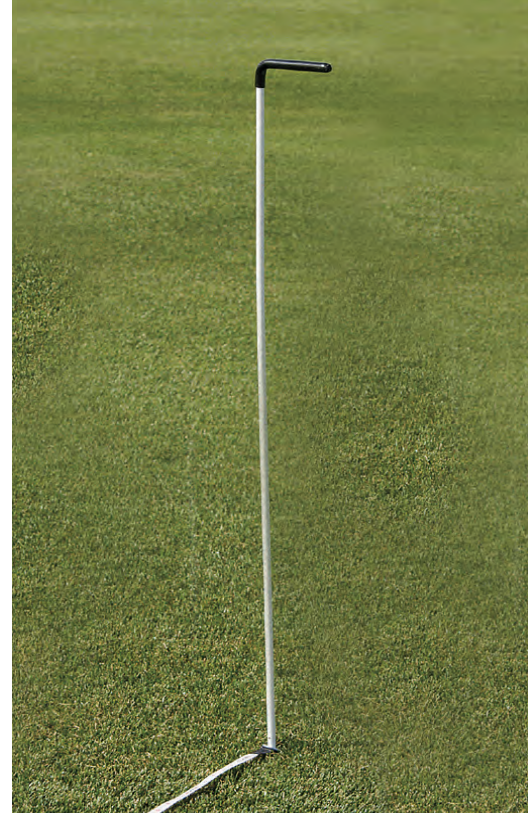
980	50' (15m)	C	\$32
981	100' (30m)	C	\$46
971	330' (100m)	O	\$127

MEASURING TAPE KIT

For all your measuring needs, includes:

- 988 300' (90m) (1)
- 985 100' (30m) (2)
- 984 50' (15m) (1)

982	Measuring Tape Kit	\$113
-----	--------------------	-------



TAPE STAKES

- Handy tool attaches to end of measuring tape for convenient use
- Used for all throwing and horizontal jumping events
- *Set of 4*

970	\$58/set
-----	----------



After aligning the targeting laser with the landing, simply push a button on and read the measurement.

HORIZONTAL JUMPS LASER MEASURING DEVICE

- Provides accurate measurements for both Long Jump and Triple Jump
- Leica Measuring Device reads both English and Metric units
- Constructed with a 6 meter aluminum rail and weighted steel bases

E73740	\$4390
--------	--------



LASER DISTANCE MEASURING SYSTEM

- Accurate laser measuring device for throwing events
- Center the mounted laser after each attempt and aim at the target
- Accurate readings to the nearest 1/8"
- *Fully compliant with NFHS, NCAA and World Athletics specifications*

E737	\$4165
------	--------

EVERYTHING YOU NEED IN ONE SIMPLE PACKAGE

ETHERLYNX VISION™ CAMERA PACKAGES BY LYNX

- **All packages contain everything you need.** Each package is a complete photofinish and timing solution for your track meets. All you add are the athletes and a computer!
- **All systems can run on any Windows computer** equipped with an Ethernet connection
- **All systems include the new FinishLynx EASYALIGN™ technology** that shows a full-frame video view of the finish line for fast and accurate camera placement
- **All systems take full color pictures** for easier athlete identification
- **All systems use power-over-Ethernet**, so no dedicated AC power is required at the camera location. A single Ethernet cable transfers all data AND provides camera power
- **All packages include LYNXPAD Meet Management software** - this integrates with multiple online meet entry websites, including Athletics.net



LYNX COMPATIBLE PRODUCTS

LED Scrolling Display	Page 47
Race Clock	Page 47
HALO	Page 50

THE SCHOLASTIC SOLUTION

- (1) 5L510 EtherLynx™ Camera
- 600 Standard Frame Rate
- 2.8-10mm Manual Zoom Lens

INCLUDES:
All camera connection and power cables
Custom FinishLynx Carrying Case
Tech Support & 1-year renewable warranty
Camera Tripod and mounting hardware
FinishLynx Lite software with support for RadioLynx Wireless Start (E39916)

E39905 \$4995

THE BRONZE SOLUTION

- (1) 5L500 Vision EtherLynx™ Camera
- 1000 Standard Frame Rate
- 8-48mm Manual Zoom lens

INCLUDES EVERYTHING FROM THE SCHOLASTIC SOLUTION, PLUS:
Full FinishLynx32 software with support for RadioLynx Wireless Start (E39916), Lynx Software Plug-in(s)
Multiple FinishLynx Cameras, IdentLynx 2-D video camera, scoreboard interface for display of running time & results, and wind gauge interface for automatic wind reading data import

E39906 \$7995

THE SILVER SOLUTION

- (1) 5L500 Vision EtherLynx™ Camera
- 2000 Standard Frame Rate
- Motorized Zoom lens

INCLUDES EVERYTHING FROM THE BRONZE SOLUTION, PLUS:
Automatic capture & virtual photocell plug-in
High resolution (2000 fps) images
Remote positioner (remote camera adjustment)
Motorized lens (remote lens adjustment)

E39903 \$11495

THE GOLD SOLUTION

- (1) 5L500 Vision EtherLynx™ Camera
- 2000 Standard Frame Rate
- Motorized Zoom lens

INCLUDES EVERYTHING FROM THE SILVER SOLUTION, PLUS:
RadioLynx Wireless Start System
Power over Ethernet network switch
IdentLynx full frame video camera
9-digit alphanumeric scoreboard

E39901 \$17995

THE PLATINUM SOLUTION

- (2) 5L500 Vision EtherLynx™ Cameras
- 2000 Standard Frame Rate
- Motorized Zoom lens

INCLUDES EVERYTHING FROM THE GOLD SOLUTION, WITH UPGRADED DISPLAY, PLUS:
A second 2000 fps 5L500 Vision EtherLynx™ camera (reverse angle/alternate finish line)
Internal RadioLynx Receiver
Video display Module (VDM)
Portable LED Display

E39921 \$26995

THE DIAMOND SOLUTION

- (2) 5L500 Vision EtherLynx™ Cameras
- 2000 Standard Frame Rate
- Motorized Zoom lens

INCLUDES EVERYTHING FROM THE PLATINUM SOLUTION WITH UPGRADED DISPLAY, PLUS:
LuxBoost Low-Light Capture
Internal Camera Battery
ResulTV software License
Network COM Port Plug-in
SerialLynx with External Battery Pack
Weather-Proof Wind Gauge
Infield Video Display

E39922 \$42495

BEST SELLER!

* FinishLynx Systems are licensed and cannot be returned.

GILL HALO



HALO ELECTRONIC STARTER DEVICE

Introducing the next generation of starting devices—the patent pending Gill Athletics® HALO Electronic Starter Device! Unlike traditional starting pistols that require costly blanks, the HALO® is an electronic system that can connect wirelessly to the Wireless Speaker System and produce both the traditional bang sound as well as an audible tone. Connect to the Multiple Speaker System to disperse sound above the decibel standard equally across the starting line. *Compatible with FinishLynx and Eagle Eye*

E49710 \$307



ALFA COMPETITION STARTING PISTOLS

- Zinc-aluminum frame finished in rust resistant nickel
- High strength heat-treated steel parts promise trouble free usage
- Bright orange grips and barrel cap eliminate confusion with a firearm
- Rugged and reliable with swing out 6-round cylinder for easy load and unload
- *Limited Lifetime warranty*

425	.22 Cal. Pistol	\$419
426	.32 Cal. Pistol	\$432

GILL® COMPETITION STARTING PISTOLS

- Inexpensive yet durable starting pistols
- Feature free spinning cylinder necessitating to cock the hammer before firing
- Holds 8 rounds

42510	.22 Cal.	\$150
42610	.32 Cal. (holds 5 rds.)	\$161

STARTING BLANKS

42701	.22 Cal. Crimped (100 rds.)	\$56
429	.32 Cal. Gator Blanks (50 rds.)	\$83
435	.22 Cal Gator Blanks (100)	\$71
42801	.32 Cal. Crimped (100 rds.)	\$124
39603	Pyro Bright Shells (50 rds.)	\$119

OFFICIALS' FLAGS

- Highly visible heavy duty nylon flag with plastic handle
- Flags measure 14" x 13"

730270	Red/White	\$17
730271	Yellow/White	\$17



STARTERS SLEEVE

Highly visible from any part of the track. Bright orange with elastic at both ends for a sure fit.

423 \$13



45W MEGAPHONE

45W Megaphone with range of up to 800 meters. Requires 10 "D" batteries (17 hours of use. Not included).

731 \$571



Back Panel

WIRELESS SPEAKER SYSTEM

The Wireless Starter System is the perfect companion to the HALO® Starting Device. Multiple Speaker System disperses sound above the decibel standard equally across the starting line.

E49720 \$1605



Includes: Wide-base Tripod, Protective Carrying Case, Rain Cover, 12V Battery & Charging Cable.

TIMEKEEPING
FOR ANY SIZE EVENT

ULTRAK L10 MULTI-LANE TIMER

- Compatible with Hytek Meet Management Software
- Times races with up to 10 lanes
- Times road races with up to 8,000 participants
- Prints bib number, lane, place, and time
- Includes linkgate, eliminating tangled cords to L10
- Includes Windows interface and 2 rolls of paper
- 2 year warranty



37932	8-Lane Timer	\$970
37934	Extra Button	\$33
37935	Paper Refills (3)	\$39



ROBIC SC-505W

- Twelve (12) memory recall
- Lap, split or single event timing
- 1/100 second resolution to 24 hours
- 1 year full factory warranty

37603	Single	\$41
37604	Set of Six	\$235



ULTRAK 310

- Functions: start, stop, reset
- Measures 10 hours
- 3 year warranty

33106	Set of Six	\$73
-------	------------	------

SEIKO S149 STOPWATCH WITH PRINTER

- 300 dual split memory
- Saves multiple events into memory
- Large-sized 3 line display
- Auto start function
- Prints 13 digits per line at 1.5 per second
- Battery life indicator
- Includes 2 rolls of paper
- 3 year warranty



37801	Stopwatch and Printer	\$638
37805	Paper Refills (5)	\$18



BEST SELLER!

ULTRAK 495

- 100 dual split recallable memory
- Measures up to 10 hours
- Continuous display of event time
- Allow for split in recall mode
- Water resistant
- 5 year warranty

37904	Black	\$63
37904Y	Yellow	\$63

TRACK ACCESSORIES



CONE MARKERS

▪ Durable, flexible PVC

F451	2"	\$3.25	999	12"	\$12
975	4"	\$6.50	976	18"	\$18
TA9756	6"	\$7.25			



730310



GILL® LANE MARKERS

- Lightweight markers are easy to stack and carry
- Stable 3-sided design provides great visibility
- 28" tall with convenient hand hole for quick set up
- Custom graphics available

73090	Lanes 1-8	\$1495/set
730905P	Lanes 1-8, Custom	\$1745/set
730909	Lane 9 Only	\$194/ea
730909SP	Lane 9 Only, Custom	\$225/ea
730910	Lane 10 Only	\$194/ea
730910SP	Lane 10 Only, Custom	\$225/ea

LJ & TJ TAKE OFF BOARD MARKERS

- Guides athletes to the horizontal jumps take-off board
- Made of safe collapsible plastic material

730310 \$144/set



HORIZONTAL DISTANCE INDICATOR BOARDS

- Visual gauge of jump distance
- Made of safe collapsible plastic material
- Lightweight for easy transportation and storage
- Custom graphics available for additional charge

730721	LJ Boards English (16'-30')	\$620
730722	LJ Boards Metric (5m-9m)	\$620
730741	TJ Boards English (38'-55')	\$756
730742	TJ Boards Metric (12m-17m)	\$756

BATONS

Individual	\$5	Set of 8	\$36
43101	Gold	431018	Gold
43102	Orange	431028	Orange
43104	Silver	431048	Silver
43105	Red	431058	Red
43106	Purple	431068	Purple
43107	Green	431078	Green
43108	Blue	431088	Blue
43109	Black	431098	Black
		430	Assorted



GILL® DISTANCE MARKERS

- Lightweight durable plastic material
- Stable 3-sided design provides 360 degree visibility
- 18" tall letters
- Custom graphics available*

Individual Markers \$191
Individual Markers with Graphics* \$218

730912	12m/39'	730930	30m/98'
730914	14m/46'	730940	40m/131'
730916	16m/52'	730950	50m/164'
730918	18m/59'	730960	60m/197'
730920	20m/66'	730970	70m/230'
730922	22m/72'	730980	80m/262'
730924	24m/79'	730990	90m/295'

*Add "SP" to end of part number. Example: 730912SP



SCHOLASTIC DISTANCE MARKERS

- Ultra light expanded vinyl material
- 13" x 16" with quick stack & light carry characteristics
- 11" letter height

941 Set of 13 \$650

Individual Markers	\$52		
941030	30'	941100	100'
941035	35'	941120	120'
941040	40'	941140	140'
941045	45'	941160	160'
941050	50'	941180	180'
941055	55'	941200	200'
941060	60'		



CUSTOMIZE IT!
Add SP to item number.

TEAR TAG NUMBERS

- Made of Tyvek® material for unsurpassed durability
- 7 1/2" x 7 1/2" numbers feature a 3 1/4" numeral and 2" detachable tag
- Sets of 100

92300	#001-100	\$50
92301	#101-200	\$50
92302	#201-300	\$50
92303	#301-400	\$50
92304	#401-500	\$50

CUSTOMIZED COMPETITOR'S NUMBERS

- Feature your school name and/or event
- Made of Tyvek material for unsurpassed durability
- Sets of 100

730400	5 1/2" x 7 1/2"	\$43/set
730410	7 1/2" x 7 1/2" * * with Detachable Tag	\$57/set

INDIVIDUAL HIP NUMBERS

* Add SP to item number for customized Hip numbers

Roll of 100	\$14	Customized Roll of 100	\$23
92101 #1		92107 #7	92113 #13
92102 #2		92108 #8	92114 #14
92103 #3		92109 #9	92115 #15
92104 #4		92110 #10	92116 #16
92105 #5		92111 #11	92117 #17
92106 #6		92112 #12	92118 #18

COMPETITOR'S NUMBERS

- Made of 100 lb 'Tuff Tear' paper tag stock
- 5 1/2" x 8 1/4"
- Sets of 100



Competitor's Numbers	\$24/set
900 #001-100	903 #301-400
901 #101-200	904 #401-500
902 #201-300	909 #901-1000

HIP NUMBERS

- Necessary for photo finish timing
- 3 1/2" digit on a 4" x 3" label
- No-residue adhesive labels

921	Hip Numbers 1-9 (25 of each)	\$30/set
922	Hip Numbers 1-18 (25 of each)	\$43/set

SAFETY PINS

910	144 ct.	\$15
91010	1440 ct.	\$64



SPIKE KIT

Storage case and 1500 spikes

- 4 x 842 spikes
- 3 x 840 spikes
- 2 x 83602 spikes
- 2 x 83601 spikes
- 2 x 843 spikes
- 2 x 838 spikes
- 1 x 846 t-handle wrench

850 \$228



STEELEX SPIKES

- Case hardened steel with blue coat provides extreme durability and extended life
- Hex-base for easier installation and removal
- Bags of 100

83500	1/4" Spike Wrench	\$15
83511	Spikes: 1/8"	\$19
83512	Spikes: 3/16"	\$19
83513	Spikes: 1/4"	\$19
83514	Spikes: 3/8"	\$19



PYRAMID NEEDLE BLANK

SPIKES

Bags of 100, unless otherwise noted

842	Pyramid: 1/4"	\$15
8401	Needle: 1/8"	\$15
83601	Needle: 3/16"	\$15
838	Needle: 1/4"	\$15
839	Needle: 3/8"	\$15
840	Pyramid: 1/8"	\$15
83602	Pyramid: 3/16"	\$15
841	Pyramid: 1/2"	\$15
843	Pyramid: 3/8"	\$15
844	Pyramid: 5/8"	\$15
848	Blanks	\$15
837	Javelin: 1" (20 ct.)	\$15



846



845

SPIKE WRENCHES

845	3-Way	\$6.25
846	T-Handle	\$16

TRACK ACCESSORIES

VICTORY PODIUM (8 PIECE SET)

- Frame constructed with 2" x 2" aluminum tubing, powder coated flat black.
- 8 individual stands allow for quick storage
- Each stand has a 39" x 39" polyboard grip floor
- Podium face is wrapped with a 19oz vinyl for cascading customization across the front of all 8 stands

990CXXSP \$11985



VICTORY PODIUM CART

- Steel construction with durable powder coat
- 8" never-flat rubber casters for easy movement over rough terrain
- Holds all 8 Victory Podium stands

991 \$1140



E39917



INTERNATIONAL FINISH POSTS

- Heavy duty steel with folded square bases
- Wheeled bases for easy mobility
- Big, bold letters for clear visibility

721 \$805/pr

FINISH LINE TAPE

- Lightweight and easy to break
- 50 yd roll

974 \$6.25



E39918

CAMERA MOUNT POLE

- Custom Height Settings
- Durable powder coat finish

E39917 Portable \$1665

E39918 Ground Sleeve \$1665



STARTER'S ROSTRUM

- Provides starting official with enough height to view all lanes
- Stable design for safety

860 \$1170



TIMERS AND JUDGES STAND

- Holds 10 people seated or 20 standing
- Five rows of 48" long steps
- Rail support along back for safety
- Red enamel finish with galvanized seats, footrests and backrest
- Easy mobility provided by 8" diameter wheels on back

995 \$1510

TRACK MAINTENANCE



SAND PIT LEVELER

- 10' long steel leveler smooths the sand in one pass
- Two 40" long wired handles
- Adjustable guides glide the leveler across the pit
- Powder coated in architectural gray
- Fits Sand Pits up to 9'8" wide

740 \$502



3-LANE TRACK GATE

- Discourage joggers from using three inside lanes causing premature and uneven wear
- Easy lift and rotate to allow training on inside lanes
- Locks into place
- Includes ground sleeve
- See color charts page 12

8540	3-Lane Track Gate	\$2200
8540CXX	3-Lane Track Gate; color	\$2415
010970XX	Post Padding; Pair	\$492



CROSSOVER ZONE®

- Lighter and easier to handle than other 'conveyor belt rubber' systems
- Protects against steel tipped cleats, shoes and equipment wheels
- Rain drains through

493667	7.5' x 30'	\$702
493668	7.5' x 40'	\$839
493663	15' x 30'	\$996
493664	15' x 40'	\$1210
493651	15' x 75'	\$1830
493652	15' x 100'	\$2200
493653	15' x 125'	\$2720



QUICKIE SAND PIT BROOM

453 \$58



PIT RAKE

451 \$104



SURFACE ROLLER

452 \$146



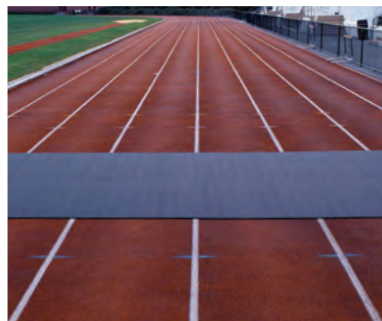
PIT SHOVEL

450 \$54

PIT FINISH RAKE

- Easy to use lightweight aluminum construction
- Custom made to fit each pit
- Quick release for ease of storage and movement
- Handle can be customized with school name or logo
- Rubber blade is "quarry quality" for long wear and does not allow sand to stick to it.
- Visit PitFinishRake.com for more information

550 \$6595



ROLLOUT RUNWAY

- Install quickly over worn runway or create a runway where none exists
- No bonding necessary, but can be done if required
- Custom Length (25' minimum) (no returns)

49036	10mm x 36"	\$9.50/ln ft
49048	10mm x 48"	\$13/ln ft
49136	12mm x 36"	\$11/ln ft
49148	12mm x 48"	\$15/ln ft

TRACK REPAIR KITS

- Repair worn areas of track or field event area
- Includes 18.5 lb of rubber granules and 1 gallon of single-solution, no-mix polyurethane adhesive
- Approximate 11 sq ft coverage

8700	Black Repair Kit	\$653
8701	Red Repair Kit	\$653
8702	Royal Blue Repair Kit	\$653
8703	Green Repair Kit	\$653



OFFICIAL TRACK & FIELD EQUIPMENT SUPPLIER

CROSS COUNTRY KIT

Includes: 24 chute posts, 2-110' lengths of chute rope with pennants, 9 directional flags (3 red, 3 blue, 3 yellow) and 9 flag poles.

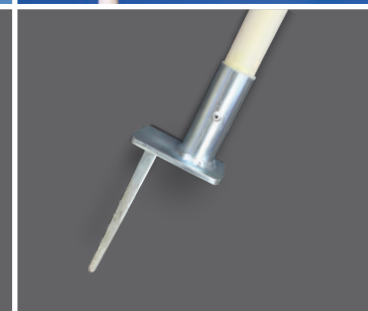
960	Complete Kit	\$649
961	4' Chute Post	\$16/ea
962	Chute Rope and Pennants (110')	\$29
9650	Flag Pole, Red Flag (Left Turn)	\$47
9660	Flag Pole, Blue Flag (Straight)	\$47
9670	Flag Pole, Yellow Flag (Right Turn)	\$47



962



961



TURF CHUTE POST

- 12 lb non-invasive chute posts are ideal for turf or golf course

968	Turf Chute Post	\$81/ea
962	Chute Rope and Pennants (110')	\$29



CROSS COUNTRY FINISH LINE BANNER

- Heavy duty vinyl banner attaches to fiberglass uprights
- Width is adjustable from 6'-12'
- Clearance height is 7'

969 \$389

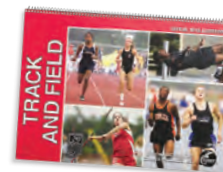
CC PACE WHEEL



- Find your athlete's recent race/time trial in the 'Current Fitness' window and that's it!
- Pace wheel reveals aerobic base training pace, marathon race pace, lactate threshold pace, Vo2 max development intervals, and running economy repetitions

998 \$21

SCOREBOOK



98902 \$24

BEST SELLER!

DISTANCE MEASURING WHEEL

- Handle collapses for easy storage
- Lightweight, durable construction
- Measures up to 10,000 feet
- English Units Only



9703 \$165

ELECTRONIC MEASURING WHEEL

- Durable long-lasting steel frame
- Electronic 7-digit LCD readout is backlit for low light usage
- Patent-pending 'thumb-up' grip ensures less wrist strain and superior control



9701 \$371

DUAL XC MEASURING WHEEL & COURSE MARKER

- Measure and mark simultaneously
- Lightweight tool features a trigger under the pistol grip
- Trigger activates spray paint (not included)
- English units only



9702 \$234



TENT SHOWN: 955415 Tent Canopy Premium Portable Tent with Full Color Printing

Tent graphic worksheet and vector graphics are all that is needed to show your team pride today!

PORTABLE EVENT TENTS

- Commercial grade gray-blue steel frame
- 600 denier polyester canopy and walls are scuff resistant and waterproof finish.
- Water, UV light, and fire resistant
- Roller bag: 600 denier polyester with scuff resistant and waterproof finish
- Tent stake kit and dust coverbag included
- Sidewalls and roller bags sold separately

COLORS



QUICK SHIP PORTABLE TENT-WITHOUT GRAPHICS

- 10x10 size only; in-stock for Quick Ship in two canopy colors (black or white)
- Canopy available in White or Black; 600 denier polyester scuff resistant and waterproof finish.
- Commercial Grade Steel Frame with hammer tone finish.

955310B	10'x10' Tent (Quick-Ship) - Black Only	\$599
955310W	10'x10' Tent (Quick-Ship) - White Only	\$599

PORTABLE TENT-WITHOUT GRAPHICS

- Canopy available in 10 colors. 600 denier polyester scuff resistant and waterproof finish.
- Commercial Grade Steel Frame with hammer tone finish.

955210	10'x10' Tent	\$599
955215	10'x15' Tent	\$791
955220	10' x 20' Tent	\$1015

PORTABLE TENT WITH ONE-COLOR IMPRINT

- Features one color custom imprint across canopy valance; 10"x100" print area
- Canopy available in 10 colors; 600 denier polyester scuff resistant and waterproof finish.
- Commercial Grade Steel Frame with hammer tone finish.

955310	10'x10' Tent - 1 Color Print	\$881
955315	10'x15' Tent - 1 Color Print	\$1075
955320	10'x20' Tent - 1 Color Print	\$1295

PREMIUM PORTABLE TENT WITH FULL-COLOR PRINTING

- Features full color digital dye sublimated print on all locations of canopy
- Canopy available in 10 colors; 600 denier polyester scuff resistant and waterproof finish.
- Industrial Grade Steel Frame with aluminum brush finish.

955410	10'X10' Tent - full color print	\$1255
955415	10'X15' Tent - full color print	\$1700
955420	10'X20' Tent -full color print	\$2055

ACCESSORIES

9552SK	Stake Kit	\$55
9552WB	Weight Bags (4) (Recommended)	\$60
955209	XL All-Terrain Wagon w/ Thermal Imprint included	\$196

SIDE WALL

955210S	10' Solid Color Side Wall	\$146
955215S	15' Solid Color Side Wall	\$195

ROLLER BAG

955210B	10' Tent Heavy Duty Roller Carry Bag	\$99
955215B	15' Tent Heavy Duty Roller Carry Bag	\$125
955220B	20' Tent Heavy Duty Roller Carry Bag	\$140

THROW

FAR





THROWS

DISCUS

S-SERIES

Gill Athletics'® new low- to mid-spin S-series feature exclusive, high-impact translucent side plates in three distinctive in-molding patterns.

- High quality steel rim
- Colorful, high-impact translucent side plates
- Meets NFHS, NCAA and World Athletics specifications



Guaranteed Legal
Weight and Size



HOW TO CHOOSE

STEP 1:

SELECT YOUR OFFICIAL
COMPETITION WEIGHT

1.0K High School Girls/Women

1.6K High School Boys

2.0K College Men

STEP 2:

SELECT YOUR DISCUS
% RIM WEIGHT



	STEP 1: DISC WEIGHT	STEP 2: % RIM WEIGHT	S6	BEST SELLER! S7	S8
1.0K Womens		LOW-SPIN 60% RIM WT	75810 \$88	MID-SPIN 75% RIM WT	77810 \$116
		MID-SPIN 75% RIM WT	77510 \$102	MID-SPIN 80% RIM WT	
1.6K Boys		LOW-SPIN 61% RIM WT	76116 \$105	MID-SPIN 75% RIM WT	78016 \$132
		MID-SPIN 75% RIM WT	77516	MID-SPIN 80% RIM WT	
2.0K Mens		LOW-SPIN 67% RIM WT	76720 \$119	MID-SPIN 75% RIM WT	78020 \$176
		MID-SPIN 75% RIM WT	77520 \$145	MID-SPIN 80% RIM WT	



INDOOR RUBBER DISC

- Solid one-piece rubber construction
- Won't scuff floors or walls
- Meets NFHS specifications

311	1.0K	\$27
308	1.6K	\$29
304	2.0K	\$40



RUBBER DISC

- Solid one-piece construction
- Tough, durable rubber
- Meets NFHS specifications

310	1.0K	\$25
307	1.6K	\$26
302	2.0K	\$27



RUBBER DISC + HANDSTRAP

- Adjustable hand strap
- For training only
- Warning: Practice in a protective cage

81310	1.0K	\$36
81316	1.6K	\$40
81320	2.0K	\$43



VIBE LIMITED EDITION DISC

- Mid-spin disc
- ABS plastic side plates
- High quality steel rim
- Meets NFHS, NCAA and World Athletics specifications

VIBE10	1.0K	75%	\$152
VIBE16	1.6K	75%	\$165



OFFICIAL TRACK & FIELD EQUIPMENT SUPPLIER



Guaranteed Legal Weight and Size

DISCUS

G-SERIES

Gill Athletics® high-moment G-series discus with high-spin rim offers throwers precision-crafted, certified World Athletics discuses.

- High-spin steel alloy rim
- Meets NFHS, NCAA, and World Athletics specifications
- World Athletics certified



Guaranteed Legal
Weight and Size



HOW TO CHOOSE

STEP 1:

SELECT YOUR OFFICIAL
COMPETITION WEIGHT

1.0K High School Girls/Women

1.6K High School Boys

2.0K College Men

STEP 2:

SELECT YOUR DISCUS
% RIM WEIGHT





	STEP 1: DISC WEIGHT	STEP 2: % RIM WEIGHT	G83	G85	CARBON 
1.0K Womens		HIGH-SPIN 83% RIM WT	88110 \$213 	88310 \$255 	2104 \$742 
			88316 \$251	88516 \$346	2164 \$777
1.6K Boys		HIGH-SPIN 83% RIM WT	88320 \$284 	88520 \$387 	2204 \$810 
2.0K Mens		HIGH-SPIN 85% RIM WT			



LEGENDARY HOLLOWOOD™ DISCUS

- Low- to mid-spin discus
- Straight grained hard rock maple side plates
- High quality steel rim
- World Athletics certified
- Meets NFHS, NCAA and World Athletics specifications

313	1.0K		65%	\$374
305	1.6K		74%	\$405
300	2.0K		75%	\$425

THROWS

HAMMERS



OFFICIAL EQUIPMENT SUPPLIER TO THE
NCAA TRACK & FIELD CHAMPIONSHIPS



ORBITER™ - TUNGSTEN

- Smaller diameter 100% tungsten-filled shell: 125mm for 20lb balls and 156mm for 35lb balls
- One-piece textured handle
- Exclusive lightweight ball-bearing swivel reduces torque and friction during rotation
- Kevlar weight bag
- Plastic injection NBR collar reduces damage potential and allows uninhibited rotation
- 1 year warranty

4959	20 lb	\$3555
4958	35 lb	\$5895



Guaranteed Legal
Weight and Size



ORBITER™ - LEAD

- Plastic injection NBR collar reduces damage potential and allows uninhibited rotation
- Sewn strap bag made out of double layered seatbelt polyester material
- Textured handle is the widest the rules allow for increased throwing performance
- 1 year warranty

4947	12 lb	\$379
4948	16 lb	\$400
4949	18 lb	\$403
4950	20 lb	\$458
4952	25 lb	\$475
4954	30 lb	\$489
4955	35 lb	\$602



TURNED IRON HAMMERS

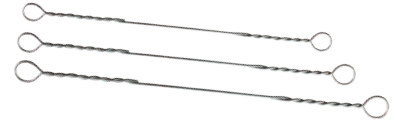
- Includes wire, handle and ball
- Meets NFHS, NCAA and World Athletics specifications

3693	3K (6.6 lb)	\$99
36935	3.5K (7.7 lb)	\$102
3694	4K (8.8 lb)	\$105
36945	4.5K (9.9 lb)	\$114
3695	5K (11 lb)	\$125
3612	12 lb	\$118
3696	6K (13.2 lb)	\$129
3614	14 lb	\$130
3616	16 lb	\$131
3618	18 lb	\$147
3620	20 lb	\$157

PACER® STAINLESS STEEL HAMMERS

- Includes wire, handle and ball
- Meets NFHS, NCAA and World Athletics specifications
- World Athletics Certified

738940	4K	95mm	\$206
738120	12 lb	103mm	\$220
738160	16 lb	110mm	\$255



HAMMER WIRES

32200	20" Wire	\$15
32300	30" Wire	\$15
32370	37" Wire	\$15
32375	37 1/2" Wire	\$15
32380	38" Wire	\$15
32385	38 1/2" Wire	\$15
32390	39" Wire	\$15
32395	39 1/2" Wire	\$15



TRAINING THROWING WEIGHTS

- Top quality turned iron
- Strong steel handle

3920	20 lb	\$259
3925	25 lb	\$311
3935	35 lb	\$344



PREMIUM HAMMER HANDLE (ALUMINUM GRIP)

32019 Meets World Athletics Specifications \$103

USA HAMMER GLOVES

- Designed to endure the toughest throwers
- Seamless outside finger designed for unobtrusive fit
- High quality genuine leather

31918	Left	Small	\$27
31917	Right	Small	\$27
31919	Left	Medium	\$27
31922	Right	Medium	\$27
31920	Left	Large	\$27
31923	Right	Large	\$27
31921	Left	X-Large	\$27
31924	Right	X-Large	\$27





PERFECT BALANCE SHOTS

- Engineered with exacting specifications for balance
- 100% sweet spot design gives uncompromised throwing distance
- Turned iron material for maximum durability
- Meets NFHS, NCAA and World Athletics specifications

3894	4K	108mm	\$258
3812	12 lb	115mm	\$291
3816	16 lb	128mm	\$334

OFFICIAL
COMPETITION
REFERENCE GUIDE



PACER® STAINLESS STEEL SHOTS

- Machine turned for precision shape and weight
- Meets NFHS, NCAA and World Athletics specifications, World Athletics certified

735940	4K	95mm	\$174
735941	4K	109mm	\$203
735120	12 lb	103mm	\$199
735160	16 lb	110mm	\$227
735163	16 lb	129mm	\$275

High School Girls/Women: 4K
High School Boys: 12 lb
College Men: 16 lb



BRASS SHOTS

- Machine turned brass for unmatched design and feel
- Meets NFHS, NCAA and World Athletics specifications

3594	4K	95mm	\$211
3512	12 lb	103mm	\$227
3516	16 lb	110mm	\$247

TRAINING SHOTS

- Cast iron material for maximum durability
- Uniform size of diameter allows for ideal training
- Keep the same size diameter as you train with variable weights



TS10830	3K	108mm	\$58
TS10835	3.5K	108mm	\$67
TS10845	4.5K	108mm	\$86
TS10850	5K	108mm	\$95
TS11510	10 lb	115mm	\$80
TS11511	11 lb	115mm	\$86
TS11513	13 lb	115mm	\$102
TS11514	14 lb	115mm	\$113
TS11516	16 lb	115mm	\$137
TS12813	13 lb	128mm	\$95
TS12814	14 lb	128mm	\$102
TS12815	15 lb	128mm	\$111
TS12817	17 lb	128mm	\$126
TS12818	18 lb	128mm	\$135
TS12820	20 lb	128mm	\$153



INDOOR SOFTSHELL SHOTS

- Polyvinyl plastic shell has softer feel for athlete preference
- Fine lead shot filled to exact weights
- Meets NFHS, and World Athletics specifications, World Athletics certified
- 1 year warranty

3106	6 lb	101mm	\$116
3193	3K (6.6 lb)	101mm	\$142
3108	8 lb	115mm	\$126
3194	4K (8.8 lb)	115mm	\$130
3195	5K (11 lb)	125mm	\$167
3112	12 lb	125mm	\$150
3196	6K (13.2 lb)	139mm	\$175
3114	14 lb	139mm	\$167
3115	15 lb	139mm	\$180
3116	16 lb	139mm	\$194
3118	18 lb	145mm	\$198



INDOOR HARDSHELL SHOTS

- Polyethylene shell will last season after season
- Fine lead shot filled to exact weights
- Meets NFHS, NCAA and World Athletics specifications, World Athletics certified
- 1 year warranty

3206	6 lb	100mm	\$116
3293	3K (6.6 lb)	114mm	\$129
3208	8 lb	114mm	\$131
3294	4K (8.8 lb)	114mm	\$135
3210	10 lb	114mm	\$151
3295	5K (11 lb)	125mm	\$157
3212	12 lb	125mm	\$160
3296	6K (13.2 lb)	138mm	\$164
3214	14 lb	138mm	\$164
3215	15 lb	138mm	\$172
3216	16 lb	138mm	\$182
3218	18 lb	144mm	\$202



CAST IRON SHOTS

- 4K and 12 lb shots guaranteed legal weight and size
- Meets NFHS, NCAA and World Athletics specifications

3306	6 lb	\$27
3393	3K (6.6 lb)	\$32
3308	8 lb	\$33
3394	4K (8.8 lb)	\$38
3310	10 lb	\$41
3395	5K (11 lb)	\$48
3312	12 lb	\$43
3396	6K (13.2 lb)	\$53
3314	14 lb	\$56
3315	15 lb	\$57
3316	16 lb	\$59
3318	18 lb	\$74
3320	20 lb	\$80



TURNED SHOTS

- Machine turned for precision shape and weight
- Meets NFHS, NCAA and World Athletics specifications, World Athletics certified

34941	4K	100mm	\$91
34944	4K	104mm	\$73
34943	4K	108mm	\$78
34121	12 lb	108mm	\$105
34122	12 lb	115mm	\$86
34161	16 lb	120mm	\$132
34162	16 lb	125mm	\$118
34163	16 lb	128mm	\$99

TRAINING & ACCESSORIES

BEST SELLER!



BOYS' THROWS HIGH SCHOOL

- 307 1.6K Gill Rubber Discus (1)
- 77516 1.6K Gill S7 Discus (1)
- 78016 1.6K Gill S8 Discus (1)
- 76116 1.6K Gill S6 Discus (1)
- 3312 12 lb Cast Iron Shot (1)
- 34121 12 lb, 108mm Turned Iron Shot (1)
- 931 Shot/Discus Carriers (2)

VP200 \$484

GIRLS' THROWS HIGH SCHOOL/COLLEGE

- 310 1K Gill Rubber Discus (1)
- 77510 1K Gill S7 Discus (1)
- 77810 1K Gill S8 Discus (1)
- 75810 1K Gill S6 Discus (1)
- 3394 4K Cast Iron Shot (1)
- 34941 4K, 100mm Turned Iron Shot (1)
- 931 Shot/Discus Carriers (2)

VP100 \$424



DISCUS CARRIER

- High quality vinyl discus carrier
- Features a plastic handle and convenient shoulder strap
- Holds 2 discuses or shot puts

931 \$21



2-SHOT CARRIER

- Features a plastic handle and convenient shoulder strap
- Vinyl construction with snap top closure
- Holds 2 shot puts

929 \$23



SCHOLASTIC SHOT CARRIER

- Heavy woven polyethylene rope with plastic handle
- Holds 1 shot put

928 \$14



TRAINING DISCUS

- Customize your training with variable weight
- Easy and quick transition from weight to weight
- *Not competition legal, for training only*

812 0.85K-1.20K \$137

811 1.40K-1.80K \$154

810 1.75K-2.20K \$186



DELUXE UNIVERSAL IMPLEMENT CARRIER

- Holds any of the three standard throwing implements
- Stores and protects: Shot Put (1), Discus (2), or Hammer (1)
- Great value to protect your throwing investment

9282 \$56



ADD ON WEIGHT

- Use for either hammer or indoor throwing weights
- Economical way to add variable weight to your training without buying more implements
- Adjustable from .5 lb to 2.5 lb

3603 Add on Weight \$35

SHOTS
THROWING
WEIGHTS
DISCUS
HAMMERS
JAVELINS

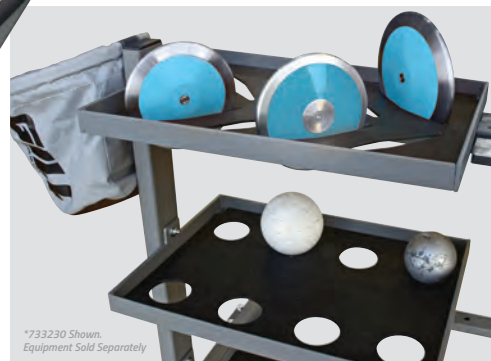


*733230 Shown.
Equipment Sold Separately

INTERNATIONAL IMPLEMENT CARTS

- HDPE liners keep each implement separated and protected
- 8" never-flat rubber casters for easy movement over rough terrain
- Steel construction with durable powder coat finish

733100	Shot Cart (Holds 32)	\$2315
733110	Throwing Weight Cart (Holds 20)	\$2315
733200	Discus Cart (Holds 28)	\$2315
733210	Hammer Cart (Holds 16)	\$2315
733220	Javelin Cart (Holds 24)	\$2315
733230	Combo Cart	\$3165



*733230 Shown.
Equipment Sold Separately



*9312 Shown

IMPLEMENT CARTS

9315	Javelin Cart (Holds 26)	\$698
9316	Hammer Cart (Holds 18)	\$698
9312	Discus/Shot/Hammer Combo Cart	\$866

TRACK WAGON

- Conveniently haul a variety of track equipment
- Gates fold down for added convenience
- Large pneumatic tires for rugged terrain travel
- 500 lb capacity to haul even the heaviest of equipment
- 48" long x 24" wide x 12" deep x 25" tall

937 Track Wagon **\$386**



2K TURBO HAMMER

- Teaches proper throwing mechanics and fundamentals
- Made of durable nylon with strong grip handle
- Ball made with high grade polyethylene rubber with gel filling and sharkskin surface
- Safe for both indoor and outdoor use

TA1185 \$150

2K TURBO SHOT



- Teaches proper throwing mechanics and fundamentals
- High grade polyethylene rubber with gel filling
- Sharkskin grip surface
- Non-marking materials
- Printed uni-grip hand guide for proper positioning

TA1184 \$78

SHOT RETURN & STOPS



*Shown with 872 Base Set, 871 Add-on Kits (3), and Custom Banner

SHOT PUT RETURN

- Spring loaded Shock-Stop™ absorbs the impact of the returning shot and protects the implement
- Powder coated steel legs adjust in height to control the shot return speed
- Pin pull design allows for simple barrier height adjustment
- Bases include stabilizing rubber feet (indoor surfaces) and spikes (outdoor surfaces)
- Base Set 872 includes 2 bases and 10' of rail
- Each Add-On Kit adds 10' of rail to customize the length to meet the facility needs

872	Shot Put Return Base Set	\$1470
871	Shot Put Return 10' Add-on Kit	\$682/ea
87103CXXSP	Optional Custom Banner	\$704

CUSTOMIZABLE



SOFT SHOT STOP

- Prevents implements from rolling past the throw sector
- Shock absorbing foam filled barriers wrapped in a 19oz customizable vinyl
- Non-slip material on bottom creates traction to keep barriers in place
- Hook and loop straps secures each barrier to each other and keeps barriers functioning as one unit
- Each barrier is 6' L x 23" W x 23" H

869CXX	Soft Shot Stop	\$930
869CXXSP	Soft Shot Stop with Graphics	\$1050



HEAVY DUTY IMPLEMENT BARRIER

- Prevents implements from rolling past the throw sector
- Constructed with durable polyethylene
- Each barrier locks together with steel pin to eliminate gaps
- Each section is 6' L x 18" W x 32" H
- 80 lbs empty / 1,110 lbs if filled with water

868 **\$871**

SECTOR LENGTH	# OF UNITS
16m / 52'	6
18m / 59'	7
20m / 66'	8
22m / 72'	8
24m / 79'	9

*Applies to both 868 and 869 Models

JAVELINS



The choice of elite throwers worldwide! OTE

javelins are handmade in the USA by the master artisans who are following in the tradition of the world's greatest name in javelin development: Dick Held. The performance potential of OTE javelins is unsurpassed, being used for numerous championship wins and world records.



Built by the same master craftsmen

that make the OTE javelins, Pacer javelins feature slightly more generous tolerances. These javelins are built for performance and durability, and are suitable for high level competition. Pacer is the brand of choice for coaches seeking great value.

BEST SELLER!



Tru-Flight javelins allow

athletes to have more efficient practice sessions by purchasing multiple javelins at nearly the same price as a singular higher-priced javelin! Recommended for high school level competition, these javelins offer unsurpassed value and quality for a budget-conscious program.

**nordic
Sport**

Gill Athletics is proud to be a North American distributor of Nordic javelins.



Gill Athletics is privileged to continue our exclusive partnership with Countervail® to create the world's most technologically advanced javelins. The OTE Carbon 1 Countervail provides up to a 40% quicker damping rate which results in longer flights with minimal vibration.

The Carbon 1 Countervail is designed after the world-record setting OTE Legend tailwind javelin, and rooted in a patented design by the inventor of modern javelins, Dick Held. Featuring a flex of 4.4 and thicker grip cord for more support and control, this javelin will behave similar to old-rules javelins and appear to "float" when thrown clean.



THE **ONLY** SINGLE-PIECE CARBON JAVELIN IN THE WORLD



CARBON FIBER TECHNOLOGY



THICKER GRIP CORD FOR MAXIMUM PERFORMANCE



OFFICIAL PARTNER



OFFICIAL TRACK & FIELD EQUIPMENT SUPPLIER

JAVELINS

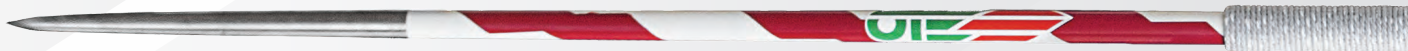


Guaranteed Legal
Weight and Size



CARBON 1 COUNTERVAIL

2001H	Headwind		80m	5.4 flex	\$1455
2001T	Tailwind		80m	5.4 flex	\$1495



COMPETITION

2695H	Headwind		70m	6.1 flex	\$680
2695T	Tailwind		70m	6.1 flex	\$708



XTRA

2690H	Headwind		60m	6.5 flex	\$642
2690T	Tailwind		60m	6.5 flex	\$668



SPECIAL

2684H	Headwind		50m	6.9 flex	\$603
2684T	Tailwind		50m	6.9 flex	\$629



INTERMEDIATE

2663H	Headwind		40m	7.2 flex	\$603
2663T	Tailwind		40m	7.2 flex	\$589

**600G
JAVELINS**



GILL TRU-FLIGHT 35064 Tru-Flight 40 Universal 40m 8.6 flex \$224



35065 Tru-Flight 50 Universal 50m 8.3 flex \$248



PACER 760005 Litania® Universal 40m 8.2 flex \$310



760011 Comet 45 Headwind 45m 7.0 flex \$513



760012 Comet 55 Headwind 55m 6.8 flex \$521



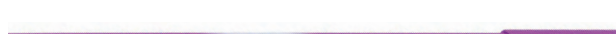
Nordic Sport 7961600 Comet Alu 600 Universal 12.1 flex \$164



7925600 Viking 600 Universal 11.1 flex \$656



7917601 Diana NXS NXS 7.2 flex \$1255



7917602 Diana NXB NXB 7.7 flex \$1075



7917600A Master Alu 600 Universal 7.9 flex \$580



CHOOSE YOUR JAVELIN

Use this chart for help on how to choose the best javelin.

ABILITY	BEGINNER → ADVANCED
FLEX	12.6 (SOFT) → 4.4 (STIFF)
DISTANCE	40M → 100M

STEP 1:

SELECT JAVELIN TYPE

600g women's, 800g men's, or rubber tipped javelin.

STEP 2:

CONSIDER YOUR ATHLETE

ADVANCED: Technically proficient throwers who can throw through the point.

INTERMEDIATE: Throwers who occasionally miss accurate flights should switch between OTE and Pacer to help learn proper javelin flight.

BEGINNER: Learn quickest with Tru-Flight javelins and should occasionally try an OTE to get a feel for how to really make it fly.

STEP 3:

SELECT YOUR FLEX

Choose a low, mid, or high flex javelin. In general, the stiffer the javelin the longer the throw.

JAVELINS



Guaranteed Legal
Weight and Size



CARBON 1 COUNTERVAIL

3001H	Headwind		100m	4.4 flex	\$1455
3001T	Tailwind		100m	4.4 flex	\$1495



COMPETITION

2885H	Headwind		90m	6.3 flex	\$878
2885T	Tailwind		90m	6.3 flex	\$918



XTRA

2890H	Headwind		80m	6.7 flex	\$827
2890T	Tailwind		80m	6.7 flex	\$866



SPECIAL

2870H	Headwind		70m	6.9 flex	\$680
2870T	Tailwind		70m	6.9 flex	\$721



INTERMEDIATE

2860H	Headwind		60m	7.1 flex	\$634
2860T	Tailwind		60m	7.1 flex	\$673

**800G
JAVELINS**



GILL TRU-FLIGHT 35085 Tru-Flight 50 Universal 50m 8.6 flex \$248



35086 Tru-Flight 60 Universal 60m 8.3 flex \$261



35087 Tru-Flight 70 Universal 70m 7.7 flex \$273



PACER 780005 Litania® Universal 50m 8.7 flex \$410



780050 Astro 50 Headwind 50m 7.4 flex \$531



780060 Astro 60 Headwind 60m 7.2 flex \$538



780031 Astro 70 Headwind 70m 6.9 flex \$547



**nordic
Sport**

7961800 Comet Alu 800  Universal 11.4 flex \$185



7922800 Viking 800  Universal 10.4 flex \$338



7916803 Airglider Steel 800  Universal 6.1 flex \$1640



7918803C Valhalla 800  NXS Medium \$1810



HEADWIND (H) A headwind version of an OTE javelin describes a streamlined tip designed to help cut through the wind. This javelin tip, because of its small surface area, will have self-correcting characteristics when a thrower misses the point, adding valuable distance to a missed throw. The headwind version is ideal for 'power' throwers who lack perfect technique but make up for it with strength and torque.



TAILWIND (T) A tailwind version of an OTE javelin describes a thicker, more blunted tip that increases the surface area in front of the javelin. When a thrower hits the point with a tailwind version of an OTE javelin, it will mimic the old rules style javelins, with a beautiful floating flight and greater distances. This tailwind version is ideal for 'finesse' throwers who lack high outputs of power, yet throw at a high technical level.

JAVELINS & ACCESSORIES



Guaranteed Legal Weight and Size



600G RUBBER TIPPED

2663R	Intermediate RT	40m	7.2 flex	\$564	
2690R	Xtra RT	60m	6.5 flex	\$642	

800G RUBBER TIPPED

2860R	Intermediate RT	60m	7.1 flex	\$634	
2870R	Special RT	70m	6.9 flex	\$680	
2890R	Xtra RT	80m	6.7 flex	\$827	

Nordic Sport

7968600	Comet RT 600		8.8 flex	\$244	
7955600	High School 600		Medium	\$362	

Nordic Sport

7968800	Comet RT 800		8.7 flex	\$292	
7952800	High School 800		Medium	\$400	

PACER

760055R	Litania® RT	40m	8.2 flex	\$310	
760211R	Comet 45RT	45m	7.0 flex	\$509	
760212R	Comet 55RT	55m	6.8 flex	\$521	

PACER

780250R	Astro 50RT	50m	7.4 flex	\$512	
780260R	Astro 60RT	60m	7.2 flex	\$534	
780033R	Astro 70RT	70m	6.9 flex	\$547	

GILL TRU-FLIGHT

BEST SELLER!

35164R	Tru-Flight 40RT	40m	8.6 flex	\$224	
35165R	Tru-Flight 50RT	50m	8.3 flex	\$248	

GILL TRU-FLIGHT

BEST SELLER!

35185R	Tru-Flight 50RT	50m	8.6 flex	\$248	
35186R	Tru-Flight 60RT	60m	8.3 flex	\$261	

RUBBER TIPPED STATES:

ALABAMA, FLORIDA, NEW JERSEY, NORTH DAKOTA, SOUTH CAROLINA, SOUTH DAKOTA AND WASHINGTON



POCKET JAVELIN

- Replicates the feel of a competition javelin
- Aluminum shaft, rubber ends, and real grip cord
- Balance point that matches that of a competition javelin
- Compact design of 13"
- Designed for indoor and outdoor use

34620	600g Pocket Javelin	\$113
34820	800g Pocket Javelin	\$128



NOCKEN BALLS

- Designed to give you the look and feel of a javelin while throwing indoors

TA105	400g	\$32
TA100	600g	\$41
TA101	800g	\$42
TA1010	1K	\$49



OUTDOOR THROWING BALLS

- Technique and arm speed training balls. For outdoor use.

TA113	400g	\$25
TA114	600g	\$28
TA115	800g	\$29
TA116	1K	\$32
TA117	1.5K	\$33
TA118	2K	\$33



INDOOR THROWING BALLS

- Technique and arm speed training balls. For indoor use.

TA102	500g	\$28
TA103	600g	\$30
TA104	800g	\$45
TA1041	1K	\$49
TA1042	1.6K	\$51
TA1043	2K	\$53

PETRANOFF JAVELINS

- Designed by former world record holder Tom Petranoff (99.72m)
- Advance from 300g to 800g model

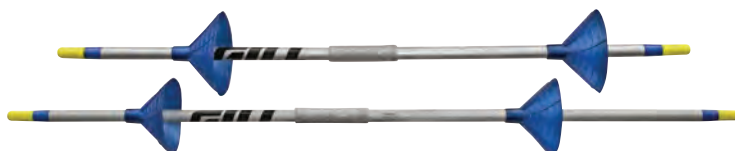
TA1193	300g Turbojav	\$56
TA1194	400g Turbojav	\$59
TA1195	500g Long Tom	\$71
TA1196	600g Long Tom	\$75
TA1187	700g Turbo Spier	\$109
TA1188	800g Turbo Spier	\$104



INDOOR TRAINING JAVELINS

- Air drag cones increase resistance to shorten throw for indoor facilities
- Aluminum shaft with rubber tip for maximum durability
- Close Out - limited QTY available.

TA1198	600g	\$152
TA1199	800g	\$153



ALL SURFACE TRAINING JAVELINS

- Designed for indoor, outdoor, and turf surfaces
- Get the balance and weight of a competition implement with a durable metal shaft and real grip cord
- Cost effective way to get more practice implements in your training inventory

REAL GRIP CORD!



34610	600g	\$140
34710	700g	\$137
34810	800g	\$137
34910	900g	\$137



JAVEE JAVELIN TRAINER

- Excellent training aid to develop javelin specific strength, flexibility, range of motion
- Use for static and dynamic stretching and warm up routines
- Improve functional length limits for reduced chance of muscle and tendon injuries
- Variable resistance provided by three strong elastic cords
- Grip diameter specific to 600g and 800g sizes

TA1820	600g	\$104
TA1821	800g	\$104



ARCHY ALL SURFACE TRAINING MAT

- Specifically designed to help isolate the shoulder for javelin-specific exercises
- Three different sides create a multi-use training tool for core, flexibility, and technique
- Anti-skid material on bottom of Archy

TA2000	\$662
--------	-------

TRAINING & ACCESSORIES



PACER® ADJUSTABLE BAG

- Includes 4 protective tubes
- Holds 5-7 javelins (without tubing), 4 javelins (with tubing)
- Heavy duty Cordura nylon
- Universal fit adjusts to hold 600g and 800g javelins

700803 \$268



HARDSHELL JAVELIN TUBE

- Holds five to seven javelins
- ABS plastic material gives peace of mind when transporting valuable javelins
- Universal fit adjusts between 600g and 800g javelins

700804 \$164



JAVELIN BACK BRACE

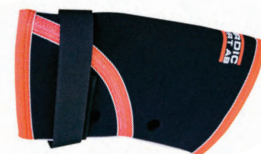
- Used by javelin throwers around the world
- Supports throwers and helps them throw far and safe
- Fits waist sizes 28-50" (71-127cm)

4581 \$46



NORDIC BACK BRACE

1086292	S, 22" - 28.5"	\$210
1086293	M, 28" - 34.5"	\$210
1086294	L, 34" - 40.5"	\$210
1086295	XL, 40" - 46.5"	\$210
1086296	XXL, 46.5"+	\$210



NORDIC ELBOW BRACE

1086392	S, 7.5" - 9"	\$99
1086383	M, 8.5" - 12"	\$99
1086384	L, 11.5" - 14"	\$99
1086395	XL, 13.5" - 15"	\$99

IMPLEMENT ACCESSORIES & KITS

GILL® HAMMER LENGTH GAUGE

- Aluminum gauge is constructed horizontally for ergonomic use
- Toggle Clamp pulls and straightens the wire for true length
- Hammer Read-Out Tool to precisely capture lengths
- 3-piece unit breaks down for convenient storage



93090 \$842



IMPLEMENT CERTIFICATION KITS

- Official-friendly design assures each implement meets specifications
- Laser cut stainless steel gauges for extreme accuracy and permanency
- High School gauges are 1/4" polycarbonate for durability and grip
- Labeled tabs on each gauge helps organize the process
- Self-contained unit packaged in one convenient case

93051 High School Certification Kit (1K, 1.6K discuses; 4K, 12 lb shot put) \$635

93066 Javelin Certification Kit (all javelin competitions) \$820

93075 NCAA Certification Kit (1K, 2K discuses; 4K, 16 lb shot put; 4K, 16 lb hammer; all javelin competitions) \$4100

93080 World Athletics Certification Kit (1K, 1.5K, 1.75K, 2K discuses; 4K, 5K, 6K, 16 lb shot put and hammer; all javelin competitions) \$4565



93051



93075 & 93080

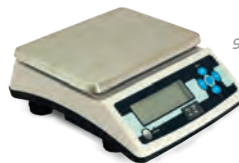
GILL® IMPLEMENT SCALES

- Quickly, easily and accurately measure the weight of any track implement
- Works for javelin, discus, hammer, shot, and indoor weight
- Easy zero reset for calibration prior to weighing
- Read out in English or Metric system

93015 Up to 15K/33 lb \$524

93020 Up to 20K/44 lb \$900

93021 Scale Ring \$48



93015



93021



ESSENTIALS™ IMPLEMENT SCALE

- Large 55 lb capacity scale with 'easy press' buttons
- Includes digital auto calibration and full range tare/zero function
- Read out in English or Metric system

93010 Essentials™ Implement Scale \$146

INDOOR THROWING WEIGHT GAUGE

- Easily check the length of indoor weight throw implements
- Adjustable knob assists in the quick calibration of the gauge before each use

93035 \$368



SHOT/HAMMER RETRIEVER

- Ideal for quick, painless pick-up of shots and hammers
- Multi-adjustment height for ergonomic use

940 \$38



SHOT AND DISCUS MARKERS

- Large three square-inch writing surface
- Ample room to write athlete's name or number
- Extra strong pointed base for fast placement
- 7 1/2" long
- 18 gauge steel

932W Marker \$3.50/ea

932W12 Markers (12) \$32/set





TRAIN
HARD

POWERMAX®



TRAINING

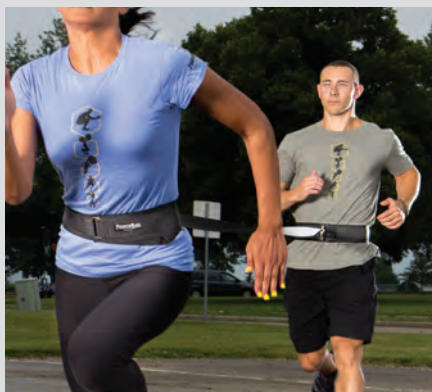
SPEED DEVELOPMENT



RESISTANCE TETHER

- **Max Belt compatible**
- Improve speed with resistance running
- Harness attaches to 10' long nylon web cord with handle
- Includes nylon cord and a 3" wide hook & loop closure belt adjustable to 42" waist, and carry bag

TA150 \$61



DUAL RESISTANCE TETHER

- **Max Belt compatible**
- One athlete runs while the other provides resistance
- Includes nylon strap attached to two 3" wide hook & loop closure belts adjustable to 42" waist, and carry bag

TA1521 \$64



TIRE TETHER

- **Max Belt compatible**
- Can be used to drag tires of different sizes for varied workouts
- Includes nylon strap and hardware to attach tire, 3" wide hook & loop closure belt adjustable to 42" waist, and carry bag. *Tire not included.*

TA1384 \$73



DUAL SPEED TRAINER

- **Max Belt compatible**
- Two-person assisted overspeed and resistance running kit
- Overspeed training provided to the rear athlete increases both stride length and frequency.
- Includes 20' latex tubing, two 3" wide hook and loop closure belts adjustable to 42" waist, and carry bag

TA164 20' Medium Tubing \$170

TA165 20' Heavy Tubing \$178



DYNAMIC TRAINER

- **Max Belt compatible**
- Keeps resistance around the hips or torso
- 10' elastic tube is covered with nylon webbing, can stretch up to 30'

TA158 \$190



POWERMAX® HIP FLEXOR

- **Max Belt compatible**
- Strengthen hip flexors and upper quadriceps
- Offers resistance to muscle groups during any training session and maintains athlete's pure running form
- Up to three ¾ lb weight bars attached to thigh belts
- Includes thigh belts, six ¾ lb weight bars, 3" wide hook & loop closure belt adjustable to 42" waist, and carry bag

TA1511 \$117



SPRINT START SLED

- Unique design provides for clearance over and around virtually all starting blocks
- Includes sled, 11' leads, and 3" wide hook & loop closure belt adjustable up to 42" waist
- Olympic style weight plates may be added to increase resistance.
- Designed by University of Idaho head coach Tim Cawley

TA1541 \$498



POWERMAX® SLED

- Provides lower body resistance that develops speed and strength for all athletes in all sports.
- Add the desired weight to determine resistance. Load up to 200 lb. 15" tall post fits 4 Olympic bumper plates.
- Includes sled, 11' lead, 3" wide hook & loop closure belt adjustable to 42" waist, and instructions. *Weights not included.*

TA154 Sled with Belt \$256

TA156 Sled with Shoulder Harness \$265



BEST SELLER!

POWERMAX® PUSH/PULL SLED

- The PowerMax Push/Pull Sled is great for versatility and adjustability in speed training.
- USA made 11 gauge steel frame sled
- Space-saving design that is less than 7" high when folded
- Replaceable/removable runners for use on a variety of surfaces
- Quick release pins for fast set-up and breakdown
- Adjustable width push posts (12-21" W x 32" H) and multiple push/pull options
- Sled weighs 45 lb (empty)
- Holds up to 300 lb, center post fits four 45 lb bumper plates
- Includes waist belt and harness

TA155 Sled w/Belt + Harness \$725



FLYWEIGHT SPEED SLED

- Ideal sled to add incremental resistance to your athletes
- Easy storage
- Weighs less than 7 lb
- Includes waist belt, nylon leads, carabiners and sled

TA157 \$178



POWERMAX® VARIABLE RESISTANCE CHUTE

- The PowerMax VR Chute features a hook & loop closure baffle panel that can be opened or closed to achieve desired resistance.
- Open the baffle for reduced resistance or close to increase it.

TA163M S/M Gray \$87

TA163XL L/XL Black \$105



SPEED DEVELOPMENT



BULLET BELT™ SYSTEM

- For resistance to improve starting and acceleration mechanics
- Hook & loop closure for easy release giving a contrast workout from resistance to free running
- Adjustable belt

TA138 \$151



POP BELT™

- The Bullet Belt "Pop" release is the basic design in the Bullet Belt series
- Used to train explosive sport-specific skills

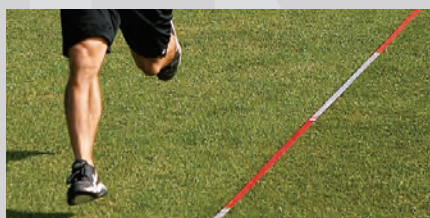
TA1383 \$91



BULLET BELT SPEED PULLEY

- This two-person over-speed trainer features a unique safety release if towed athlete cannot maintain pace.
- Comes with 30m of cord and a Bullet Belt universal web belt.

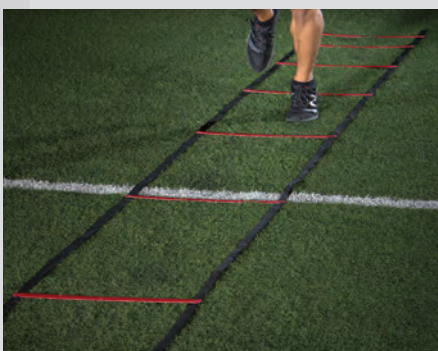
TA1381 \$248



STRIDE CHECKER

- Improve stride length and frequency
- 30M long with segmented markings
- Usable on most surfaces
- Includes storage bag

TA1695 \$66



POWERMAX® ACCELERATION LADDER

- Incrementally increase stride length and frequency
- Increasing stride spacing from 12" to 69"
- All red rungs, black sides, and a carry bag

TA168 37'6" X 20" \$105



ANKLE-FLEX STRAPS

- Holds sprinter's foot flexed
- Improved ground strike efficiency

TA1485 \$36/pr



TC-TIMER SYSTEM

The TC-Timer is a wireless timing device that enables athletes and coaches to measure time, speed, count repetitions, input test data and save it all in the TC-Timer memory.

- Sends radio transmissions up to 1,000 feet
- Accurate to the 100th of a second
- Equipped with 5 different radio frequencies allowing multiple systems to be used in the same area
- All components fit neatly into a small lumbar pack

E38720 TC Timer System \$1955

E38721 Pair, Additional TC Gates \$1070

BLACK BOX TIMING SYSTEM

The Black Box system timing data is displayed on a smart-phone instead of the TC Timer using a BLE connection. Add up to 20 split beams for testing and custom applications.

E38711 \$1065

MED BALLS



BEST SELLER!

POWERMAX® V2 MED BALLS

- 18 oz. flexible moisture resistant polyurethane shell textured for grip
- Hand-sewn casing design and expert ball construction
- Dimensionally stable, balanced, and maintains the impact absorbing properties
- *One year warranty*

TA1362	6 lb	Ø 14"	\$132
TA1363	8 lb	Ø 14"	\$138
TA1364	10 lb	Ø 14"	\$148
TA1365	12 lb	Ø 14"	\$160
TA1366	14 lb	Ø 14"	\$167
TA1367	16 lb	Ø 14"	\$176
TA1368	18 lb	Ø 14"	\$183
TA1369	20 lb	Ø 14"	\$194



POWERMAX® RUBBER MED BALLS

- Synthetic rubber balls suitable for all sports.
- Can be used indoor and outdoor.
- Color coded for easy weight identification.

TA106	1K Purple	Ø 6.5"	\$40	TA111	5K Blue	Ø 10.5"	\$79
TA108	2K Yellow	Ø 7.5"	\$49	TA112	6K Orange	Ø 11"	\$86
TA109	3K Green	Ø 9.5"	\$57	TA131	7K Gray	Ø 11.5"	\$103
TA110	4K Red	Ø 9.5"	\$68	TA132	8K Black	Ø 12"	\$120



NON-BOUNCE MED BALLS

- Material is made from durable PVC.

TA13204	4 lb	Ø 9"	\$28
TA13206	6 lb	Ø 9"	\$32
TA13208	8 lb	Ø 9"	\$37
TA13210	10 lb	Ø 9"	\$46
TA13215	15 lb	Ø 9"	\$60
TA13220	20 lb	Ø 9"	\$64
TA13225	25 lb	Ø 9"	\$95
TA13230	30 lb	Ø 10 ¼"	\$107
TA13240	40 lb	Ø 10 ¼"	\$153
TA13250	50 lb	Ø 10 ¼"	\$211



POWERMAX® GRIP BALLS

- Durable rubber shell with filler and comfortable built in rubber handle.
- Will not harm rubber floors. Balls are Ø 8" (diameter), grip is 1" x 1 ¼".

TA4002	2 lb	\$49
TA4004	4 lb	\$57
TA4006	6 lb	\$71
TA4008	8 lb	\$83



POWERMAX® SWING BALLS

- For swinging, slamming, and rotation drills
- Rope: ½" nylon with a 30" handle from stopper to end

TA1332	2K Yellow	Ø 7.5"	\$107
TA1333	3K Green	Ø 9.5"	\$127
TA1334	4K Red	Ø 9.5"	\$149
TA1335	5K Blue	Ø 9.5"	\$176



Fits Powermax® V2 Medicine Balls

DOUBLE-SIDED RACK

- Powder-coated steel rack holds up to 10 balls

TA1292	63" x 22.5" x 9" (27 lb)	\$219
--------	--------------------------	-------

JUMP TRAINING

THE POWERMAX® VERTICAL JUMP TRAINER

The PowerMax® Vertical Jump Trainer is constructed of aluminum, providing a lightweight, reliable solution for any vertical training needs. Tip and Roll wheels provide easy transportation while the rubber adjustable feet offer a secure base that won't mar your floor. Foldable Weight Arms on both ends of the base allow for weights to be added for more stability. Colored vanes provide quick and easy measurement readings. Height ranges from 95" to a maximum height of 146"

TA205 \$675





POWERMAX® ELECTRONIC VERTICAL JUMP TESTER

- Measures from 7' to 12' in ½" increments
- Light up dots on the height scale and digital display immediately show the exact jump height
- Data is downloadable to any computer
- Height decal offers quick "zero" marking
- Standing height measuring strip helps establish base height of reach prior to jump

TA199C12 \$3045



BEST SELLER!

SOFT PLYOBXES

- Standard 28" x 28" blocks
- 3" block is built with 2.2# density polyethylene foam, other sizes with 1.8# which provides stability, shock attenuation, and performance
- Secured for stacking with industrial strength Velcro®
- Durable vinyl cover with two reinforced handles for portability
- Each box weighs less than 28 lb

TA203	3" Soft Plyobox	\$180
TA206	6" Soft Plyobox	\$243
TA212	12" Soft Plyobox	\$349
TA218	18" Soft Plyobox	\$488
TA224	24" Soft Plyobox	\$597
TA225	Set of 5, 1 of Each Size	\$1800

STEEL PLYOBXES

- 1" square steel tubing
- Plywood top platform with 10mm rubber surface
- Anti-skid rubber on base corners prevents slipping and protects floors
- Tapered design allows for stacking and stability

TA3060	6" Plyobox	\$159
TA312	12" Plyobox	\$178
TA318	18" Plyobox	\$199
TA324	24" Plyobox	\$218
TA330	30" Plyobox	\$237
TA336	36" Plyobox	\$258
TA342	42" Plyobox	\$275
TA301	4pc. Plyobox Set (12", 18", 24" & 30")	\$804
TA300	6pc. Plyobox Set (12", 18", 24", 30", 36" & 42")	\$1325



TRAINING

PLYOMETRICS



PLYO RUNWAY MAT

Surface reduces stress of impact on joints and muscles during explosive training sessions.

TA303 3'W x 6'L x 1/2" thick **\$129**



POWER PAD

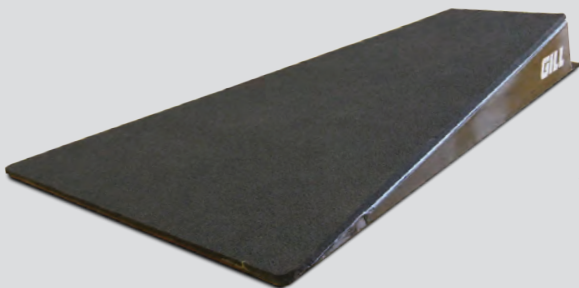
- Low-impact, energy absorbing foam pad
- 48"L x 48"W x 24"H

TA194 **\$1105**

FLAT JUMP PLATFORM

- Made of lightweight aluminum and covered with synthetic track material
- Easy to transport between practices
- Track spikes can be installed to ensure no slipping if needed
- Platform is 5" x 34" x 19"

TA198 **\$641**



LAUNCH PAD

- Allows for more jumps per session
- Steel construction with welded support braces
- Synthetic track material on jump surface
- Track spikes can be installed to ensure no slipping if needed

TA1921 **\$943**



ARCHED JUMP BOX

- Convex jumping box made of lightweight steel that is easy to carry to and from practices
- Covered in synthetic track material to simulate the same feelings as your track and runways
- 8" high in the middle by 30" wide and 47" long

TA193 **\$864**



POWERMAX® VERSA-HURDLE

- Built-in safety feature causes the hurdles to collapse upon impact
- Adjustable from 12" to 42"
- 18 gauge tube steel with durable gate board

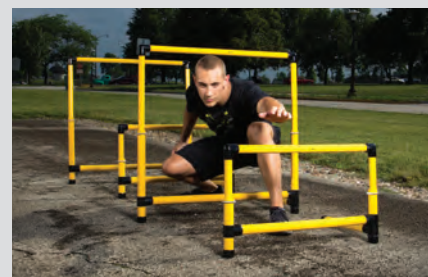
100	Hurdle	\$57/ea
101	Versa-Hurdle Bag	\$32



FOAM TRAINING HURDLE

- Ideal training hurdle made of forgiving foam
- Heavy enough to remain upright, yet light enough to be completely portable
- Durable vinyl covering allows for indoor and outdoor use
- Heights: 30", 33", 36", & 39"

409	\$228
-----	-------



SMART HURDLE

Smart Hurdles have a three point base for superior stability on all surfaces. Smart Hurdles are durable, lightweight, and easy to carry.

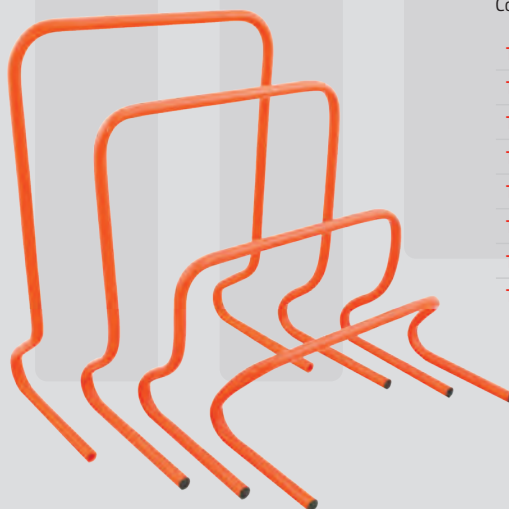
TA18544	21-36" Adjustable Hurdle	\$113
TA18545	27-42" Adjustable Hurdle	\$126



AGILITY ROCKER HURDLES

Weighted base allows hurdles to rock back into the starting position. Colors may vary.

TA1676	6" Hurdle	\$29/ea
TA1678	8" Hurdle	\$29/ea
TA16710	10" Hurdle	\$30/ea
TA16712	12" Hurdle	\$30/ea



STEP HURDLES

Constructed of durable, lightweight PVC tubing

TA167	6" Hurdle	\$21/ea
TA1675	6" Hurdles (5)	\$93/set
TA166	12" Hurdle	\$22/ea
TA1665	12" Hurdles (5)	\$99/set
TA16618	18" Hurdle	\$29/ea
TA166185	18" Hurdles (5)	\$130/set
TA16624	24" Hurdle	\$34/ea
TA166245	24" Hurdles (5)	\$153/set



VARIABLE HEIGHT STEP HURDLES

The 2-in-1 hurdle can quickly and easily be adjusted to 2 heights (8"-12") and folds flat for storage.

TA1662	2-in-1 Hurdles	\$22/ea
TA16625	Set of 5 with Bag	\$112
TA16601	Mesh Carry Bag (Holds 5 Hurdles)	\$11

AGILITY TRAINING

POWERMAX® WEIGHT VEST

- Holds soft double stitched ½ lb weights
- Purchase additional ½ lb packs to fill short vest up to 20 lb or the long vest up to 40 lb
- Moveable shoulder straps 2 ¾" wide with 5 ½" of adjustability
- Short vest fits up to a 40" chest/waist, 18" L x 16" W, long vest fits up to a 57" chest/waist, 23" L x 16" W

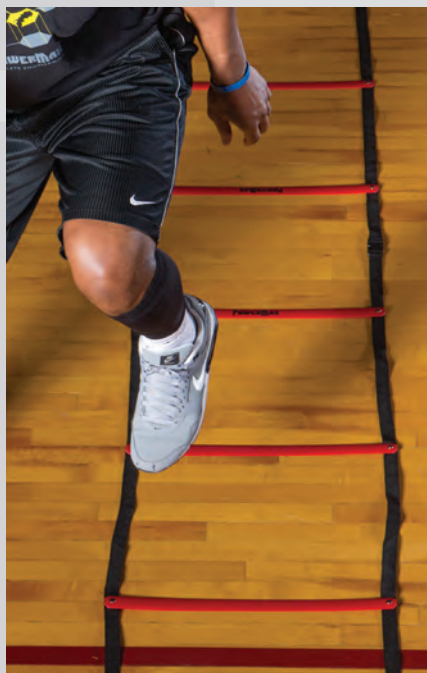
TA1226	Short 10 lb Vest	\$138
TA1227	Long 20 lb Vest	\$221
TA1228	10 weight packs (5 lb)	\$44
TA12281	20 weight packs (10 lb)	\$82
TA12282	40 weight packs (20 lb)	\$159



TA1226



TA1227



POWERMAX® WEB LADDER

- Sewn nylon ladder is 16' L x 18" W
- Slats every 18"
- Includes storage bag and 4 ground stakes

TA1696 \$42



POWERMAX® AGILITY DOMES

- Multicolored domes are ideal to mark an agility course
- Durable impact resistant polyethylene
- Includes 40 domes (10 in each color) and storage rack

TA1852 \$110

BEST SELLER!

POWERMAX® AGILITY LADDERS

- 15' ladder comes in two 7' 6" sections with 10 slats total
- 30' ladder comes in four 7' 6" sections
- Easily connect with other ladders
- 20" wide with 18" between slats, not adjustable
- Includes 1 agility ladder & carry bag

TA1691	15' Agility Ladder	\$86
TA1681	30' Agility Ladder	\$140



POWERMAX® SAND BAG SET

- Leak proof inner bags hold 20 lb of sand securely (sand not included)
- Inner bags are pre-marked for easy measurement
- Five strategically placed padded handles
- Set includes inner and outer bags, holds up to 80 lbs

TA12241 \$152



POWERMAX® ADJUSTABLE ANKLE WEIGHTS

- Made of stretchable neoprene
- Adjustable weight up to 5lb total
- 21" x 5.25" x 1/2"

TA1861 \$58/pr



TA128

SPEED ROPES

- Stainless steel cable encased in plastic
- Ball bearing in handles for quick turnover
- Fixed length
- Includes carry bag for easy storage
- Padded handles for comfort

TA128	9' Speed Rope	\$25
TA1281	10' Speed Rope	\$28



TA1274

TA1273

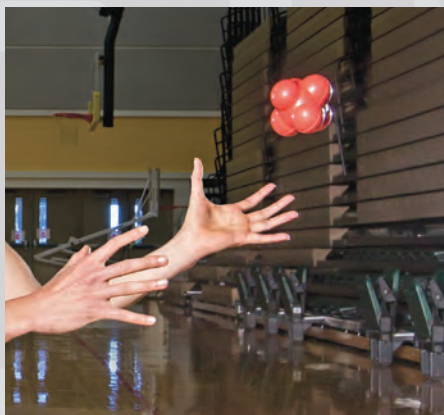
TA1271

TA1272

BEGINNER SPEED ROPES

- These PVC ropes feature lightweight plastic handles and high-spin swivels

TA1271	7' (Green)	\$8.75
TA1272	8' (Blue)	\$8.75
TA1273	9' (Red)	\$8.75
TA1274	10' (Yellow)	\$8.75



REFLEX BALL

- Improve reaction time and eye-hand coordination
- Non-marking rubber provides unpredictable bounce
- 4" diameter

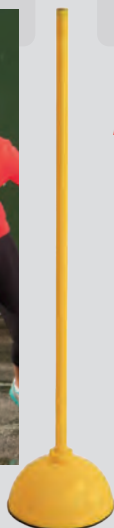
TA144 \$11



AGILITY RINGS

- Create patterns to challenge footwork or set a pattern of acceleration
- Can be used on a variety of surfaces, ideal on textured surfaces

TA1693 Set of 12 \$73



AGILITY POLES

- 5' tall poles force athletes to maintain posture
- Includes 4 bases and 4 poles
- Add sand or water to base for additional stability

TA1850 \$137



AGILITY DOTS

- Dots are easy to store and transport
- Easy to see bright colors

TA1694 Set of 6 \$43

BODYWEIGHT TRAINING



	Vinyl Boot End Collegiate	Knotted End Hemp	Vinyl Boot End Dacron	Ball Knotted Hemp	Boot Knotted Dacron
12' Long	\$342 00199012	\$418 00113120	\$500 00118120	\$984 00115120	\$1010 00119120
16' Long	\$356 00199016	\$432 00113160	\$523 00118160	\$1195 00115160	\$1285 00119160
20' Long	\$367 00199020	\$446 00113200	\$557 00118200	\$1380 00115200	\$1525 00119200
24' Long	\$382 00199024	\$459 00113240	\$590 00118240	\$1590 00115240	\$1775 00119240

HEMP CLIMBING ROPES

This 1-1/2" rope contains 12-18% mineral oil lubricant by weight for long life and is securely attached within a heavy-duty steel fitting for years of durability. Optional rubber knots anchored every 12". Collegiate ropes are finished with a vinyl boot.

SOFT DACRON ROPES

Soft Dacron ropes are ideal for elementary physical education programs. The no-twist spun Dacron material is easier on hands than hemp ropes and will wear better than cotton. Hypoallergenic.

ROPE ATTACHMENT METHODS



3/2" OD PIPE CLAMP

XCLP97001002

\$22



STAPLE PLATE

10340000 For Wood Beams

\$29

10341000 For Concrete Beams

\$53



STEEL I-BEAM CLAMP

10100100 Fits ≤8" Beams

\$67

10100200 Fits ≤17" Beams

\$94

ROPE ACCESSORIES



TAMBOURINE

3/8" lacquered plywood tambourine restricts climbing height. Clamp permits fast removal & easy adjustment.

00198000 \$210



ROPE HOIST

Hoist is complete with wall brackets, ceiling attachment, heavy-duty cord and weight. Installs easily, ready to use.

00104000 \$322



SAFETY GUARD

Safety guard prevents the rope from falling if a part fails or wears out.

00110000 \$180



POWERMAX® CONDITIONING ROPES

Ropes help athletes with power generation, strength endurance, and increased cardio development.

- 1.5" or 2" Thicknesses with finished handles to prevent shedding and blistering
- Synthetic fibers
- Optional bracket fits up to 2.125" rope, made of .125" flat steel and round bar

TA1606 1.5" Synthetic Rope – 30' \$512

TA1607 1.5" Synthetic Rope – 40' \$603

TA1608 1.5" Synthetic Rope – 50' \$715

TA1617 2" Synthetic Rope – 30' \$569

TA1618 2" Synthetic Rope – 40' \$715

TA1619 2" Synthetic Rope – 50' \$815

TA1613 Rope Wall Bracket \$38





MULTI-STATION WALL-MOUNTED CHINNING BARS

- 10' long chinning bar with three stations
- Mounts 16" away from the wall
- 1" solid steel diameter grip with a durable zinc plated finish

00196013 10' 3 Piece Steel Chinning Bar \$876



BEST SELLER!

WALL-MOUNTED CHINNING BAR

- 50" wide by 21" tall with 1" grip diameter
- Bar is 22" away from wall/ceiling
- 48" mounting centers
- Black powder coat finish
- *Hardware not included*

WE179 \$274



ADJUSTABLE CHINNING BAR

- 1" Grip diameter
- Bar is 22" away from wall
- 48" Mounting centers
- Black powder coat finish
- *Hardware not included*

00197100 \$549



PEG BOARD CLIMBERS

- 1 1/2" Thick gloss finished hardwood
- Rectangle has 11 holes spaced on 10" centers. Holes are arranged in 2 rows with staggered alignment
- Square has 16 holes spaced on 7 1/2" centers in a 4 x 4 grid pattern
- Two ϕ 1 1/2" x 6 1/2" wood pegs included
- Mount directly to the wall or use optional mounting brackets
- *Hardware not included*

00188 Rectangle 15" x 60" \$646

00189 Square 30" x 30" \$646

001881 Pair, Mounting Brackets \$193

001891 Pair, Wood Pegs \$33



WEIGHT BARS & PLATES



CAMBERED SQUAT BAR

- This bar allows squats to be done in a more vertical posture, producing intensified quadriceps involvement.
- Cambered end design relieves much of the lower back stress normally associated with a back squat.
- All steel design with padded shoulder harness.

WT129 \$566

WOMEN'S HYBRID BAR

- 79" Carbon steel bar
- 33 lb weight
- 25mm grip diameter
- 400 lb weight rating

WT1216 \$461



POWER BAR

- 86" Bright Zinc Plated Sleeve bar
- 45 lb weight
- 32 mm grip diameter
- 1200 lb weight rating
- Lifetime warranty against bending

WT1203 \$492



PRO BAR WRAP PAD

- Protects shoulders and back during lifting exercises
- Black nylon cover with high quality foam insert
- 14" Long

WE310 \$20



STEEL SPRING COLLARS

Traditional, functional steel spring collar

WT131 \$18

SOLID RUBBER BUMPER PLATES

Bumper plates are the ideal tools for any lift from a standing position. Designed to impact the ground without creating damage to the floor, these new plates are thinner for those who wish to lift larger loads.

- 100% Rubber plates with solid steel insert
- Fit any olympic-style bar
- Colored plates feature colors to help guide weight selection
- Plates are sold in pairs
- Standard plate size 18" diameter

45 LB

WT245CB
\$422/pr



3.5"

35 LB

WT235CB
\$328/pr



2.75"

25 LB

WT225CB
\$275/pr



2"

10 LB

WT210CB
\$147/pr



1"

45 LB

WT245B
\$290/pr



3.5"

35 LB

WT235B
\$244/pr



2.75"

25 LB

WT225B
\$161/pr



2"

15 LB

WT215B
\$132/pr



1.5"

10 LB

WT210B
\$101/pr



1"



ROLLING BUMPER STAND

- Rugged casters allow for easy transport
- Stores up to ten 45 lb bumper plates
- Removable center post for easy load/unload
- Laser cut 1/4" steel base
- 36"H x 24"W x 24"D, 25 lb

WE528 \$267



WRIST STRAPS

Provides support for Olympic lifts, overheadwork, and bench presses.

WE31912 12" Wrist Straps \$22/pr

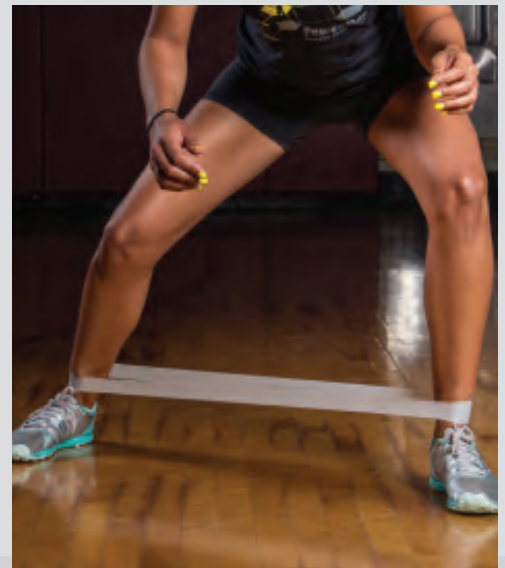
FLEXIBILITY & REHAB



POWERMAX® STRENGTH BANDS

- Resistance determined by thickness & width
- 41" long, seamless latex rubber
- Layered construction helps prevent breakage
- Sold individually

TA17110	XX-Light 35 lb Resistance, .5", Red	\$18
TA17160	X-Light 50 lb Resistance, .75", Orange	\$20
TA17170	Light 65 lb Resistance, 1", Violet	\$24
TA17120	Medium 80 lb Resistance, 1.7", Blue	\$46
TA17130	Heavy 150 lb Resistance, 2", Green	\$63
TA17140	X-Heavy 175 lb Resistance, 3", Black	\$87
TA17150	Super 200 lb Resistance, 4", Yellow	\$107



POWERMAX® MINI BANDS

- Great tool for warm-ups, hip muscles, and small intrinsic muscles
- 2" wide x 13" long

TA1741L	10 Light Bands (Red)	\$44
TA1741M	10 Medium Bands (Gray)	\$56
TA1741H	10 Heavy Bands (Black)	\$61



POWERMAX® STABILITY BALLS

- Excellent for balance, abdominal work, and stretching
- Fabricated from durable vinyl, supports 500 lb
- Ships Deflated

TA1805	55 cm Ball (5' - 5' 8")	\$55
TA1806	65 cm Ball (5' 8"-6' 2")	\$58
TA1807	75 cm Ball (6' 2"+)	\$65



5" MASSAGE BALL

- Helps eliminate muscle knots, tension, and tightness
- Multi-directional roll to pinpoint specific muscles
- Two layer design with firm interior and soft exterior

TA1841 \$50



STRETCH OUT STRAP

- PNF stretching without a partner
- Eight 8" Handles allow a variety of stretches
- 62" Length x 4" Width x .5" Thickness

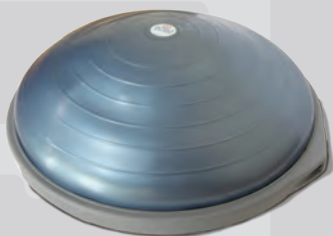
TA1781 \$8.50



STRETCHRITE™

- Increase tension by changing grip position
- Change or isolate the stretch by rotating foot inward or outward

TA1780 \$42



BOSU® BALANCE TRAINER

- Fitness / health professional version
- Includes program manual, training video, & free pump

TA1790 \$293



POWERMAX® FOAM ROLLER

- For advanced balance exercises or pressure massage
- Constructed of high density foam
- 6" Diameter x 36" Length

TA3620 \$48



THE STICK

- Excellent tool for injury prevention and rehabilitation
- Used by professional athletic teams

TA1830 24" Stick \$76

TA1831 18" Stick \$60



ROLL-UP EXERCISE MAT

- Soft, durable foam with textured surface
- Roll-up for portability and storage
- 24" Width x 70" Length x .125" Height

TA304 \$33

POWERMAX® BALANCE PAD

- Soft eva foam material
- Great for balance & coordination activities
- 17" Length x 10" Width x 2 3/8" Height

TA1803 \$48



LET IT

FLY



FACILITIES

HAMMER CAGES



SAFETY.
CONVENIENCE.
LONGEVITY.



Gill hammer cages have exclusive features that protect athletes, officials, and spectators from errant throws in the hammer event. Combined with an industry best five-year warranty, Gill Athletics keeps your facility at the top of its class in safety and efficiency. Your facility deserves the best.

SAFETY PULLEY SYSTEM

Block and tackle pulley system lowers the net to safely remove 'stuck' implements from the nets without climbing.

FRONT DOOR CABLE DESIGN

With Gill's exclusive tensioning cable front door design your cage will increase athlete safety and efficiency in the event. No more bent front pole from errant throws, and decrease the likelihood of bounce backs from implements.

DOOR HINGE LOCK BOLT

Suggested from the top track designer in America, this unique feature keeps your front doors from tweaking and misaligning from the door hatch location.

REAR DOOR ACCESS

Netting System that keeps your athletes away from the throwing sector of the front cage while increasing the speed of repetitions.



Block & Tackle Safety Pulley System Shown

CUSTOMIZABLE CAGES

Pole Color (XX)



*To specify your color selection, use the two-digit number to replace XX in the item number.



CUSTOMIZABLE CAGES

See color charts on page 98 to replace the XX in the item numbers.

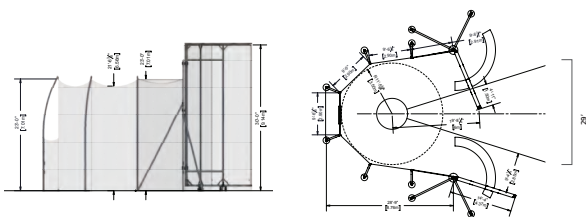


BLOCK & TACKLE SAFETY PULLEY SYSTEM

MAXIMUS™ HAMMER CAGE

▪ 5 Year Warranty

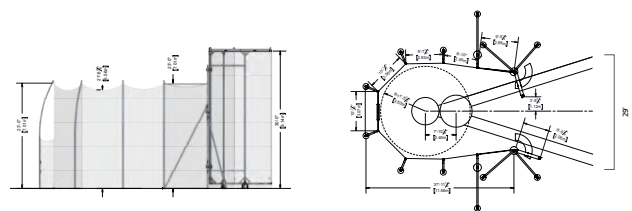
742130	Cage	\$53200
742130CXX	Cage with Custom Color	\$58525
74213001	Ground Sleeve Kit	\$3450
732103	Optional Barrier Net (8')	\$1125



MAXIMUS™ DOUBLE RING HAMMER CAGE

▪ 5 Year Warranty

742135	Cage	\$56325
742135CXX	Cage with Custom Color	\$61965
74213501	Ground Sleeve Kit	\$4310
732108	Optional Barrier Net (8')	\$1240



HAMMER CAGES

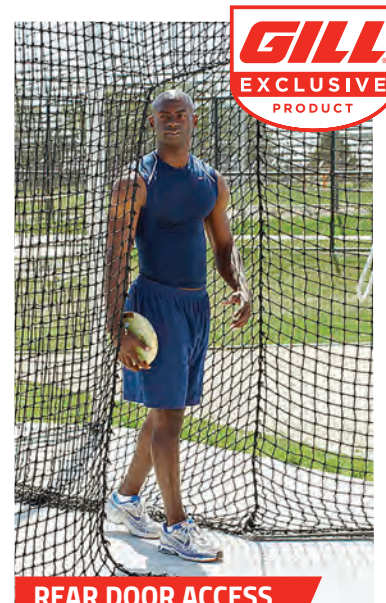


CUSTOMIZABLE CAGES

See color charts on page 98 to replace the XX in the item numbers.



BLOCK & TACKLE SAFETY PULLEY SYSTEM

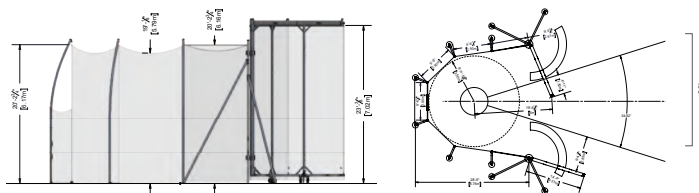


REAR DOOR ACCESS

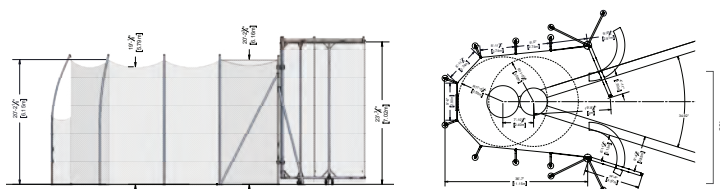
KEEPS YOUR ATHLETES AWAY FROM THE THROWING SECTOR OF THE FRONT CAGE WHILE INCREASING THE SPEED OF REPETITIONS.

NCAA HAMMER/DISCUS CAGES

- Available in single ring or double ring design
- Poles: 6063-T6 aluminum net poles
- Doors: Cages have 7m tall aluminum doors with galvanized steel door hinge poles. Tall Cages have 8m tall doors.
- Net: Weather treated nylon 6 net with 749 lb break strength
- Cage - Main net: 20' 6"/6.25m, Door net: 23'/7m
- Tall Cage - Main net: 23'/7m, Door net: 26' 3"/8m
- All cages include required cage door bracing.
- Ground sleeve kit sold separately
- **Meets NCAA Specifications**
- **5 Year Warranty**



SINGLE RING CAGES



DOUBLE RING CAGES

SINGLE RING CAGE

742110	Cage	\$41845
742110CXX	Cage with Custom Color	\$46035
74211001	Ground Sleeve Kit	\$3335
732103	Optional Barrier Net (8')	\$1125

TALL SINGLE RING CAGE

742120	Tall Cage	\$46675
742120CXX	Tall Cage with Custom Color	\$51350
74212001	Ground Sleeve Kit	\$3410
732103	Optional Barrier Net (8')	\$1125

DOUBLE RING CAGE

742115	Cage	\$45225
742115CXX	Cage with Custom Color	\$49750
74211501	Ground Sleeve Kit	\$4095
732108	Optional Barrier Net (8')	\$1240

TALL DOUBLE RING CAGE

742125	Tall Cage	\$49735
742125CXX	Tall Cage with Custom Color	\$54700
74212501	Ground Sleeve Kit	\$4270
732108	Optional Barrier Net (8')	\$1240



732310C23



On all Gill Cages
Call for Details.

COLORS

22	23	25
ARCH GRAY	ARCH BLACK	ARCH WHITE

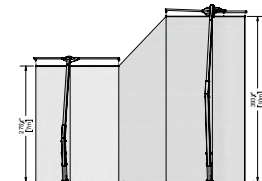
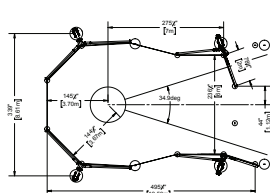
*To specify color with order, use the two-digit number of your color selection to replace XX in the item number.

THOR 10 HAMMER/DISCUS CAGE

- Poles: (4) Combination of steel and aluminum to withstand up to 74mph winds
- Doors: (2) 10m x 2m swing arm doors
- Net: 1 3/4" square mesh woven poly cord with 771 lb break strength
- Main net height: 23'7m, Door net height: 32'10"/10m
- Net is secured by net rails across entire cage and 14 rope anchors
- 59" deep ground sleeves
- *Meets NCAA and World Athletics specifications*
- **5 Year Warranty**

732310CXX Thor 10 Hammer/Discus Cage **\$62520**

73231001 Ground Sleeve and Net Anchor Kit **\$3735**



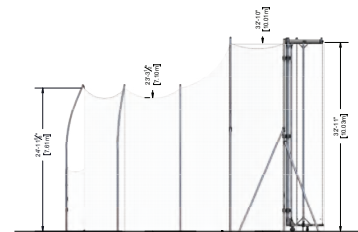
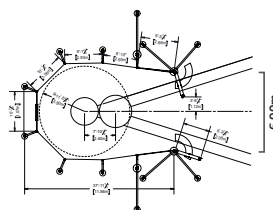
INTERNATIONAL DISCUS/HAMMER CAGE

- Poles: (8) 6063-T6 aluminum net poles
- Doors: (2) Galvanized steel door hinge poles and 10m tall aluminum moveable doors
- Net: Weather treated nylon 6 net with 340.7kg break strength
- Ground sleeve kit sold separately
- *Meets NCAA specifications.*
- **5 Year Warranty**

742145 Cage **\$57325**

74214501 Ground Sleeve Kit **\$4620**

732218 Optional Barrier Net (8') **\$2360**



DISCUS CAGES



APOLLO DISCUS CAGE

- Poles: (3) Combination of steel and aluminum to withstand up to 62mph winds
- Net: 1 3/4" square mesh woven poly cord with 352 lb break strength
- Net height: 18'
- Net is secured by 14 hanging points and 8 rope anchors
- 36" deep ground sleeves
- Meets NCAA and World Athletics Specifications
- 5 Year Warranty

732301CXX	<i>Apollo Discus Cage</i>	\$23070
732301009	<i>Ground Sleeve and Net Anchor Kit</i>	\$1315

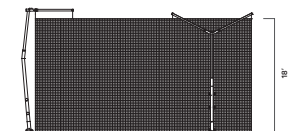
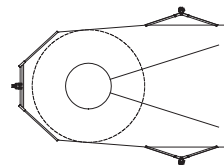
COLORS

22	23	25
ARCH GRAY	ARCH BLACK	ARCH WHITE

**To specify color with order, use the two-digit number of your color selection to replace XX in the item number.*



*On all Gill Cages
Call for Details.*





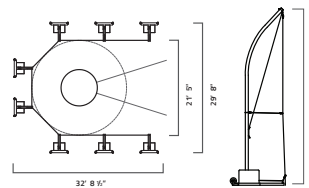
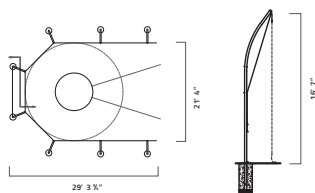
CUSTOMIZABLE CAGES

See color charts on page 105 to replace the XX in the item numbers.



732130

OPTIONAL BARRIER NET SHOWN



NCAA ALUMINUM DISCUS CAGE

- Poles: (8) 6063-T6 aluminum net poles
- 16' 7" Net: Weather treated nylon 6 net with 340 lb break strength
- Rear door access net standard
- Rear net support tubes prevent net sag
- 18" hinged net arms secure net at all eight poles
- 36" deep ground sleeves
- **Meets NCAA specifications**
- **5 Year Warranty**

732130	Cage	\$7055
732130CXX	Cage with Custom Color	\$9100
732132	Optional Barrier Net (8')	\$1625

NCAA PORTABLE DISCUS CAGE

- Designed for set up and removal as needed
- Poles: (8) 2 1/2" outside diameter 6063-T6 aluminum net poles
- 16' 7" Net: Weather treated nylon 6 net with 340 lb break strength
- Base: A500 Grade B steel equipped with wheels. To be weighted with sand or water filled jugs.
- 5 gallon jugs with gray vinyl covers included. Covers available in other colors or with custom graphics for an additional charge.
- **Meets NCAA specifications**
- **5 Year Warranty**

732230	Cage	\$16475
732230CXXYY	Cage with Custom Color	\$18120

Pole Color (XX) Vinyl Color (YY) See color chart on pg 106

BRUTUS NCAA DISCUS CAGE

- For high wind areas that need extra strength discus cages
- Made of Hammer Cage strength 4" outside diameter aluminum poles
- **Meets NCAA specifications**
- **5 Year Warranty**

732150	Brutus Cage	\$12065
732150CXX	Brutus Cage, Custom Color	\$14510

DISCUS CAGES

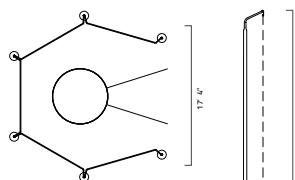


PRO-DOWN DISCUS CAGE

- Poles: (6) 2 3/8" outside diameter 12 gauge steel poles
- 10' 6" Net: Knotless weather treated nylon net with 180 lb break strength
- Five galvanized steel top rungs eliminate net sag
- *Meets NFHS specifications*
- *5 Year Warranty*

80401 Cage with Ground Sleeves **\$2420**

80402 Cage with Plates **\$3840**



DISCUS SECTOR NET

- Effective at stopping a discus from skipping outside of the sector
- 2' tall by 60' long 320 lb break strength discus net
- Held by 3/4" diameter steel net poles and ground stakes
- Polyethylene net spools included for convenient storage and handling

731135 **\$690**



OUTDOOR THROWING NET

- Get the maximum number of reps with the minimal amount of retrieval
- Provides the perfect set up for working on throwing technique for shot put, discus and javelin (weighted balls)
- Bottom of main net has a pocket to catch implements before they hit the ground, preventing damage and making retrieval easier
- Side nets offer additional errant throw protection
- Poles: 4" diameter, 1/8" wall, T6 aluminum tube in 40" deep ground sleeves
- Nets are 749 lb test weather treated knotted nylon
- Main net is 20' x 20'

731300 **\$4410**



732150C03

COLOR OPTIONS AVAILABLE!

Transform Your Cages with Custom Powder Coat

CUSTOMIZABLE

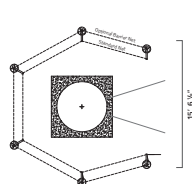


*To specify color with order, use the two-digit number of your color selection to replace XX in the item number.

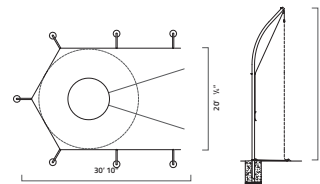
HIGH SCHOOL DISCUS CAGES

- Aluminum poles: 2 7/8" outside diameter 6063-T6 (Ultimate-30ksi, Yield-25ksi) with rolled offset for safety
- Steel poles: 2 1/2" square A513 (Ultimate-42ksi, Yield-30ksi) with rolled offset for safety
- Nets: 180 lb break strength
- Net height: 13' 6"
- Meets NFHS specifications
- 5 Year Warranty

6 POLE DESIGN



7 POLE DESIGN



ALUMINUM CAGE

8010	6-Pole Cage	\$4210
8010CXX	6-Pole Cage, Custom Color	\$5220
80102	Barrier Net	\$603
8020	7-Pole Cage	\$4690
8020CXX	7-Pole Cage, Custom Color	\$5815
80202A	Barrier Net	\$731
8021	7-Pole Cage with Rear Door Access	\$6100
8021CXX	7-Pole Cage with Rear Door Access, Custom Color	\$7105
80212	Barrier Net with Rear Door Access	\$702

STEEL CAGE

8030	6-Pole Cage	\$3810
80302	Barrier Net	\$589

BRUTUS CAGE

- For high wind areas that need extra strength discus cages
- Made of Hammer Cage strength 4" outside diameter aluminum poles
- Meets NFHS specifications
- 5 Year Warranty

9010	6 Pole High School Cage	\$7425
9010CXX	6 Pole High School Cage with Custom Color	\$8850
9020	7 Pole High School Cage	\$8640
9020CXX	7 Pole High School Cage with Custom Color	\$9845
9021	7 Pole High School Cage, Rear Door Access	\$9160
9021CXX	7 Pole High School Cage, Rear Door Access, Custom Color	\$10365

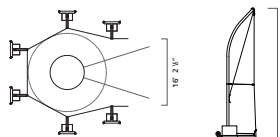
DISCUS, SHOT, & INDOOR CAGES



HIGH SCHOOL PORTABLE DISCUS CAGE

- Designed for set up and removal as needed
- Poles: (6) 6063-T6 aluminum net poles
- 13' 6" Net: #504 knotless nylon netting with 180 lb break strength
- Base: A500 Grade B steel equipped with wheels. To be weighted with sand or water filled jugs.
- 5 gallon jugs with gray vinyl covers included. Covers available in other colors or with custom graphics for an additional charge.
- **5 Year Warranty**

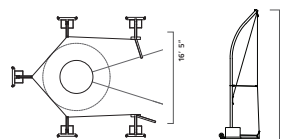
732220	Cage	\$11595
732220CXXYY	Cage with Custom Color	\$13015



NCAA PORTABLE INDOOR CAGE

- Designed for set up and removal as needed
- Poles: (5) 6063-T6 aluminum net poles
- 13' 2" Net: #42A knotless nylon netting with 561 lb break strength
- Doors: repositionable with wired front design for longer life
- Base: A500 Grade B steel equipped with wheels. To be weighted with sand or water filled jugs.
- 5 gallon jugs with gray vinyl covers included. Covers available in other colors or with custom graphics for an additional charge.
- **Meets NCAA specifications**
- **5 Year Warranty**

732250	Cage	\$17770
732250CXXYY	Cage with Custom Color	\$19665



CUSTOMIZABLE

*To specify color with order, use the two-digit number of your color selection to replace XX and YY in the item number.

Pole Color (XX)



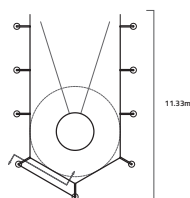
Vinyl Color (YY)



WORLD ATHLETICS ALUMINUM DISCUS CAGE

- Poles: (9) 6063-T6 aluminum net poles
- 6m Net: Weather treated nylon 6 net with 340 lb break strength
- Rear door access net standard
- Rear net support tubes prevent net sag
- 18" hinged net arms secure net at all poles
- **Meets NCAA and World Athletics Specifications**
- **5 Year Warranty**

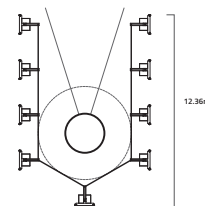
732145	Cage	\$15610
--------	------	---------

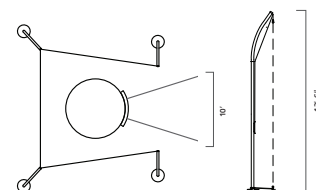


INTERNATIONAL PORTABLE DISCUS CAGE

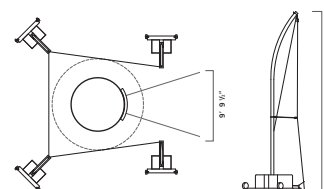
- Designed for set up and removal as needed
- Poles: (9) 6063-T6 aluminum net poles
- 5.1m Net: Weather treated #42A knotless net with 340 lb break strength
- Base: A500 Grade B steel equipped with wheels. To be weighted with sand or water filled jugs.
- 5 gallon jugs with gray vinyl covers included. Covers available in other colors or with custom graphics for an additional charge.
- **5 Year Warranty**

732240	Cage	\$20620
732240CXXYY	Cage with Custom Color	\$22210





SHOT CAGE



PORTABLE SHOT CAGE

SHOT CAGE

- Poles: (4) 6063-T6 aluminum or A513 steel
- 13' 6" Net: Weather treated nylon 6 net with 180 lb break strength
- 18" hinged net arms secure net at front two poles with ground stakes used at back poles
- **5 Year Warranty**

805	<i>Steel Cage</i>	\$3325
8050	<i>Aluminum Cage</i>	\$4025
8050CXX	<i>Aluminum Cage with Custom Color</i>	\$4540

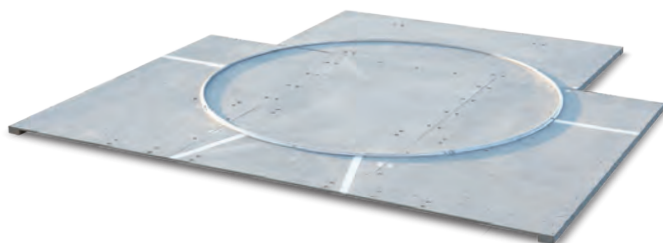
PORTABLE SHOT CAGE

- Designed for set up and removal as needed
- Poles: (4) 6063-T6 aluminum net poles
- 13' 6" Net: #42A knotless nylon netting with 180 lb break strength
- Base: A500 Grade B steel equipped with wheels. To be weighted with sand or water filled jugs.
- 5 gallon jugs with gray vinyl covers included. Covers available in other colors or with custom graphics for an additional charge.
- **5 Year Warranty**

732260	<i>Cage</i>	\$9055
732260CXXYY	<i>Cage with Custom Color</i>	\$10005

5
YEAR
WARRANTY

**On all Gill Cages
Call for Details.**



PORTABLE DISCUS PLATFORM

- Wood platform with aluminum circle
- Constructed of 1/2" marine grade plywood with pressure treated 2' x 5' and 2' x 6' lumber
- Platform breaks down into eight pieces for storage space of 8' x 4'
- Weighs in excess of 400 lb
- Gray marine coat finish

3710 \$5965

CIRCLES & TOEBOARDS



BEST SELLER!

ALUMINUM CIRCLES

- Four sections of 1" x 3/4" extruded aluminum angle
- Designed to be cast into concrete
- Discus circle can also be mounted to surface
- Compatible with toeboards 358, 363
- *Meets NFHS, NCAA and World Athletics specifications*

369	Shot/Hammer Circle	\$339
370	Discus Circle	\$356



ALUMINUM CIRCLES WITH 2" ANGLE PROFILE

- Two sections of 2" x 2" extruded aluminum angle
- Designed to be cast into concrete
- Compatible with toeboards 358, 363
- *Meets NFHS, NCAA and World Athletics specifications*

374	Shot/Hammer Circle	\$809
375	Discus Circle	\$843



PROFILE FOR
369, 370 & 372



PROFILE FOR
371 & 373



PROFILE FOR
374 & 375



364 with 373



ALUMINUM SHOT CIRCLE

- Three sections of 1" x 3/4" extruded aluminum angle
- Designed to be mounted on top of concrete surface
- Anchor bolts included
- Compatible with toeboards 359, 364
- *Meets NFHS specifications*

372	\$324
-----	-------



POWDER COATED STEEL DISCUS CIRCLE

- Three sections of 1/4" x 1 1/2" flat powder coated steel
- Designed to be mounted on top of concrete surface
- Anchor bolts included
- *Meets NFHS specifications*

371	\$611
-----	-------



BEST SELLER!

POWDER COATED STEEL SHOT CIRCLE

- Four sections of 1/4" x 1 1/2" flat powder coated steel
- Designed to be mounted on top of concrete surface
- Anchor bolts included
- Compatible with toeboards 359, 364
- *Meets NFHS specifications*

373	\$423
-----	-------



HAMMER CONVERSION CIRCLE

- Converts a discus ring into a hammer ring
- 7 interlocking sections of white PVC plastic
- *Meets NFHS, NCAA and World Athletics specifications, World Athletics certified*

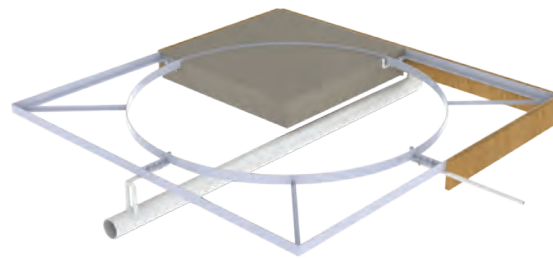
3622	7 Piece System		\$579
------	----------------	---	-------



ALUMINUM CIRCLES WITH CROSS BRACING

- Two sections of 1/2" x 3" extruded aluminum with welded bracing
- Bolt together to maintain form during in-ground installation
- Hardware included
- Compatible with toeboards 358, 363
- *Meets NFHS, NCAA and World Athletics specifications, World Athletics certified*

366	Shot/Hammer Circle		\$976
366C04	Shot/Hammer Circle; White		\$1100
367	Discus Circle		\$972
367C04	Discus Circle; White		\$1095



ALUMINUM CIRCLE FORMS

- Four sections of 2" x 3" aluminum angle
- Bolt together form for in-ground installation
- Aluminum exterior bracing creates a strong frame
- Center open for smooth concrete pour and crack-resistant finish
- Inner circle is 1/2" x 3" flat aluminum bar
- Compatible with toeboards 358, 363
- *Meets NFHS, NCAA and World Athletics specifications*

3741	Shot/Hammer Circle Form	\$4105
3751	Discus Circle Form	\$4685



SYNTHETIC SHOT TOEBOARD FOR DEPRESSED PAD

- Molded low density polyethylene designed for 3/4" depressed surface
- Compatible with circles 366, 369, 374, 3741
- *Meets NFHS, NCAA and World Athletics specifications*

358 \$486

SYNTHETIC SHOT TOEBOARD FOR LEVEL PAD

- Molded low density polyethylene designed for surface mount shot circles
- Compatible with circles 372, 373
- *Meets NFHS specifications*

359 \$486



ALUMINUM SHOT TOEBOARD FOR DEPRESSED PAD

- Cast aluminum designed for a 3/4" depressed surface
- Compatible with circles 366, 369, 374, 3741
- *Meets NFHS, NCAA and World Athletics specifications, World Athletics certified*

363 \$791

ALUMINUM SHOT TOEBOARD FOR LEVEL PAD

- Cast aluminum designed for surface mount shot circles
- Compatible with circles 372, 373
- *Meets NFHS specifications*

364 \$791



SYNTHETIC PLUGS

- Keeps debris and standing water out of throwing circles
- Constructed of 3/8" thick rubber and made to fit snug inside depressed circles
- Plugs come in sections for easier handling

37001	Shot Circle Plug	\$416
37002	Discus Circle Plug	\$713



SHOWN: 368 Throw Circle (1)
3680 toeboard (1)
All items sold separately

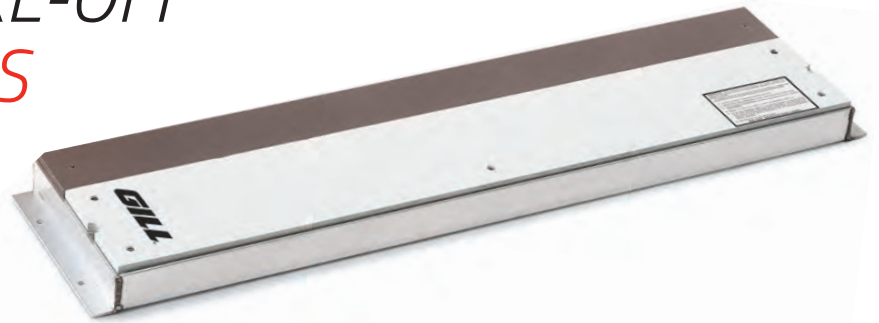
INDOOR SHOT/WEIGHT THROW CIRCLE

- Constructed of 3/4" plywood with steel hinges and handles
- Foldaway handles for easy handling and storage
- Laminated weather proofed marine plywood toeboard (sold separately)
- Optional three piece 3/4" 7-ply birch plywood throwing surface (sold separately, not shown)
- *Meets NFHS, NCAA and World Athletics specifications*

368	Indoor Shot/Weight Throw Circle	\$1570
3680	Wood Shot Toeboard for Indoor Circle	\$644
3681	Shot Throwing Surface	\$649

TAKE-OFF BOARDS & CURBING

PREPARE FOR TAKE-OFF WITH GILL BOARDS



ADJUSTABLE TAKE-OFF BOARD SYSTEMS

With the Gill Adjustable Take-Off Board Systems you get ease of installation, ease of use and dependable peak performance.

Gill Take-Off Board systems are the easiest and fastest boards to install in the market. **Complete system** comes with installation tray, adjustable folded aluminum base, reversible long lasting take-off board and foul board, and functional blanking lid ready to accept track surfacing.

- 8" take-off board and 4" foul board creates 12" system
- Exclusive easy-adjust leveling system for both horizontal and vertical axis
- Composite for longer lifespan
- Composite boards made of Polyboard®, an environmentally friendly, waterproof material that will not split or crack while offering jumpers great grip
- Meets NFHS, NCAA and World Athletics specifications

43505	Complete NCAA System	\$1505
43515	Complete World Athletic System	\$1570
43525	Complete 12" Take-Off Board and Tray	\$698
439	1 lb Plasticine Brick - Yellow	\$13
P435007	Replacement 4" NCAA Foul Board	\$123
P435107	Replacement 4" World Athletics Foul Board	\$147
P435005	Replacement 8" Take-Off Board	\$238
P435205	Replacement 12" Take-Off Board	\$227

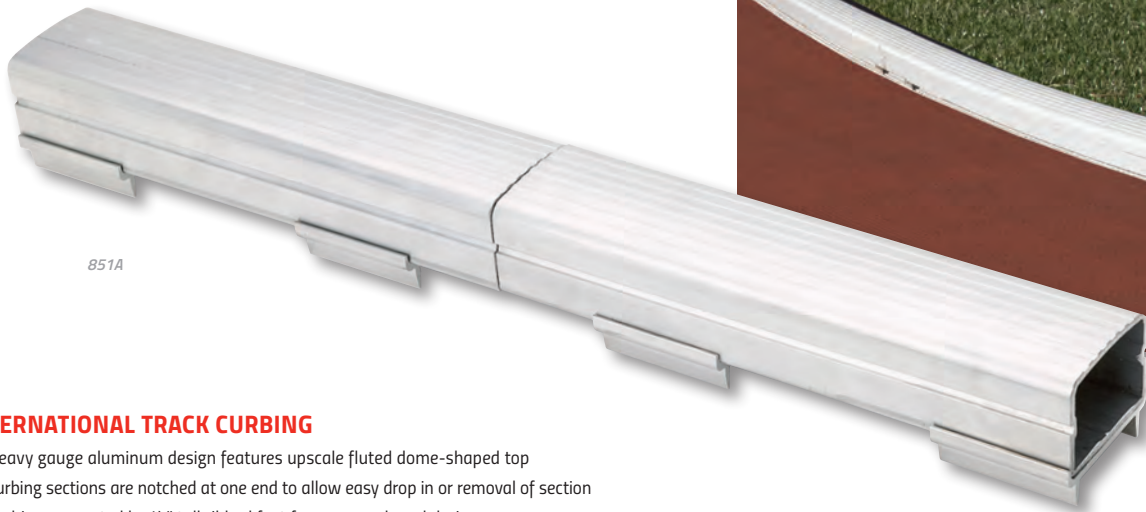
ADJUSTABLE 8" TAKE-OFF BOARD SYSTEMS

- Complete system: Installation tray, aluminum leveling board and reversible take-off board
- Composite for longer lifespan
- Composite boards made of Polyboard®, an environmentally friendly, waterproof material that will not split or crack while offering jumpers great grip
- Blanking lid sold separately
- Meets NFHS and NCAA specifications

BEST SELLER!

4445	Complete Standard 8" Take-Off Board System	\$697
44421	Blanking Lid Assembly	\$444
44405	Replacement Take-Off Board	\$339





851A

INTERNATIONAL TRACK CURBING

- Heavy gauge aluminum design features upscale fluted dome-shaped top
- Curbing sections are notched at one end to allow easy drop in or removal of section
- Curbing supported by ½" tall ribbed feet for unencumbered drainage
- Optional pin kit available to keep curbing from shifting on track
- Permanent installation includes two anchor pins for every 20' section
- *Meets NFHS, NCAA and World Athletics specifications, World Athletics certified*



NON-PERMANENT INSTALLATION CURBING

851A	Plain		\$16/ln ft
852A	Anodized		\$23/ln ft
852P	Powder Coated		\$20/ln ft
851P	Base Pins (12)		\$247/set

PERMANENT INSTALLATION CURBING

853A	Plain		\$17/ln ft
854A	Anodized		\$23/ln ft
854P	Powder Coated		\$23/ln ft

CUSTOMIZABLE



*Gray and Black powder coat available in Gloss or Flat

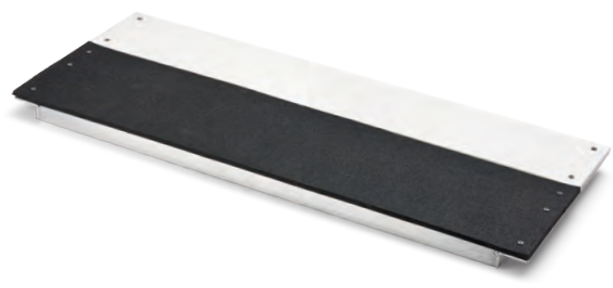


441TS

19.5" TAKE-OFF BOARD SYSTEM

- Complete System: Installation tray, aluminum base board, and reversible take-off board
- Composite for longer lifespan
- Composite boards made of Polyboard®, an environmentally friendly, waterproof material that will not split or crack while offering jumpers great grip
- *Meets NFHS specifications*

441TS	Complete HS System	\$747
44105	Replacement 19 ½" Take-Off Board	\$223



CONVERSION BOARD

- Convert a Gill 19 ½" take-off board system to an 8" system
- Includes 8" composite take-off board, black vultrak, and baseboard

441C \$464

VAULT BOXES

BEST SELLER!

ALUMINUM VAULT BOX

- Welded aluminum construction
- Reinforced backstop for prolonged life
- Meets NFHS, NCAA and World Athletics specifications, World Athletics certified

502  \$775

ALUMINUM VAULT BOX LID

- Compatible with all Gill vault boxes
- Reinforced with two 1/2" angled vertical supports to prevent sagging
- 50201: Recessed design to accommodate 1/2" (12mm) track surface
- 50202: Flush design with no added track surface

50201 Lid-Recessed Mount **\$681**

50202 Lid-Flush Mount **\$729**



STEEL VAULT BOX

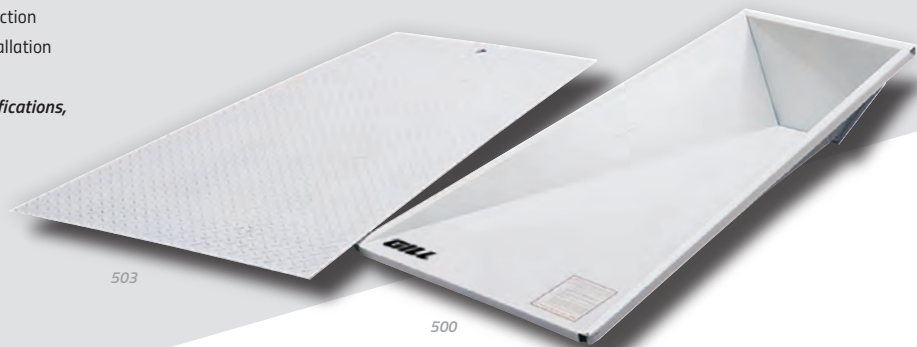
- Twelve gauge steel with fold and weld construction
- Flanged edges and flared sides for secure installation
- Finished with durable white powder coat
- Meets NFHS, NCAA and World Athletics specifications, World Athletics certified

500  \$647

UNIVERSAL VAULT BOX LID

- Compatible with all Gill vault boxes
- Constructed of 11 gauge hot rolled steel
- Features anti-slip designed surface
- Finished with durable white powder coat

503 **\$555**



STAINLESS STEEL VAULT BOX AND LID

- Box: Stainless steel alloy fold and weld construction for corrosion resistance
- Lid: 12 gauge 304 stainless steel plate with 2 angled vertical supports to prevent sag
- Lid: Recessed design to accommodate 1/2" (12mm) track surface
- Lid intended for use with stainless steel vault box
- Meets NFHS and NCAA specifications

504 Vault Box **\$1315**

50401 Vault Box Lid **\$949**



CAST ALUMINUM VAULT BOX

- 100% cast aluminum construction with a wall thickness of 3/16"
- Standard durable white powder coat finish; Orange powder coat option available
- Inside corners rounded for unhindered pole rotation
- Guaranteed against cracking or warping
- Meets NFHS, NCAA and World Athletics specifications, World Athletics certified

505 White  **\$1275**

505C05 Orange  **\$1385**



VERSACOM BOXES

CONNECTING IT ALL TOGETHER

The VersaCom Box provides a junction for electricity and cable hookups. This box can be put in virtually any location around performance areas of varying surfaces. The open bottom of the VersaCom Box provides adequate drainage and conduit entry, while the hand holes in the cover allow easy access.

- Divider plates in full size version, provided to help keep electrical equipment segregated
- Main box structure is made of 1/4" thick folded aluminum
- Lid is constructed of 1/4" aluminum plates for maximum support and durability

The VersaCom Box - Synthetic Version allows material to be bonded or poured onto the top of the lid to match the surrounding surface.

The VersaCom Box - Turf Version features a supplied aluminum top to allow artificial turf to be glued on the jobsite, and is tethered to the box. This top is reinforced with multiple aluminum plates for maximum strength and durability. Factory installed turf infill retention brushes keep infill out of the box.



SOLD SEPARATELY

VERSACOM RISER

The VersaCom Riser has the same dimensions as a full-size VersaCom Box. The riser attaches to the bottom creating a box that is twice as deep.

F90010 Versacom Riser **\$840**

VERSACOM BOXES		FULL SIZE 30" L x 18" W x 14" D		HALF SIZE 15" L x 18" W x 14" D	
SYNTHETIC VERSIONS	Synthetic	F910	\$1670	F930	\$1085
	Turf	F960	\$1720	F970	\$1135



SAND PIT FORMS & COVERS

Sand pit forms hold more than just sand, they hold value.

With four different options of Sand Catcher locations and two practical Sand Catcher Cover options, you can design the horizontal jump facility that will perfectly meet your needs.

No matter which combination you choose; with the Gill Functional-Form, you can rest assured it's the finest product (with the easiest installation) available.

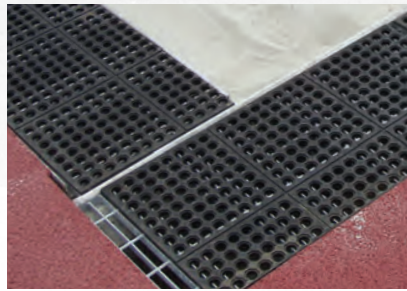
Choose from one of two Sand Catcher Cover systems: traditional grate and mat or Gill (exclusive) Recessed Lid. When you consider the main function of a Sand Catcher system is not to catch sand but to store it, the Recessed Lid system is rapidly becoming the choice of facilities worldwide, as it is designed to receive track surfacing to match your track facility. When coupled with the 730148 Aluminum Sand Pit Cover, a complete logical design emerges for your world class jumps facility.

Choose from one of four sand catcher locations: no sides, two sides, two sides and back, or all four sides. Choosing Sand Catchers on the sides will cut unnecessary costs and eliminate potential trip hazards, providing more than ample storage space for overflow sand.

FORM WITH RECESSED CATCHERS



FORM WITH GRATE & MAT CATCHERS



FORM WITH NO CATCHERS



730 Perimeter Padding sold separately

4 SIDES	25'L	F46225 \$29225
	28'L	F46228 \$31690
	31'L	F46231 \$32835
3 SIDES	24'L	F46124 \$24300
	27'L	F46127 \$25455
	30'L	F46130 \$28410
2 SIDES	23'L	F46023 \$20365
	26'L	F46026 \$23330
	29'L	F46029 \$25130

4 SIDES	25'L	F44225 \$27910
	28'L	F44228 \$31195
	31'L	F44231 \$32195
3 SIDES	24'L	F44124 \$23195
	27'L	F44127 \$24300
	30'L	F44130 \$26940
2 SIDES	23'L	F44023 \$18395
	26'L	F44026 \$20530
	29'L	F44029 \$21355

LEDGE	23'L	F42023 \$8060
	26'L	F42026 \$8885
	29'L	F42029 \$9205

ALL FORMS ARE 9' 8" WIDE

FAST INSTALLATION

**Track surface not included

PERIMETER PADDING SYSTEM

- Greatly reduce possibility of injury caused by impact with sand pit edging
- Modular pads install on any sand pit quickly and conveniently
- Critical location of pads is along sides of sand pit
- Each pad is 36" long

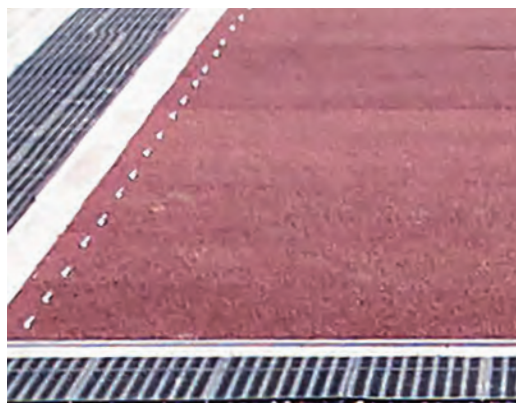
730

\$182



RECESSED SAND CATCHER COVER PANELS

- Designed for 1/2" (12mm) track surface
- Constructed of 1/8" aluminum sheet metal
- Standard unit measures 18" x 36" and requires a ledge around perimeter to rest on
- Special lengths available between 18" and 35" long



LJ/TJ ALUMINUM SAND PIT COVER

- Each panel made from 9.5" x 1.75" x .125" aluminum planking framed with 2 3/8" x 1 1/2" x 3/16" aluminum angle
- Panels have four flush mount handles
- Recessed design for 1/2" (12mm) track surface

730148 \$62/sq ft



BALLASTED LJ/TJ SAND PIT COVERS

- Exclusive Vipol Matrix mesh material or solid vinyl polyester
- Anchoring system: Vinyl wrapped galvanized steel chain perimeter
- Ballasted pit covers are custom sized and sold by the square foot (no returns)
- Optional 5' x 5' multi-color graphic available
- Dimension certification form must be submitted with order

493680	Mesh Vinyl	\$8.25/sq ft
493682	Solid Vinyl	\$8.25/sq ft
4936	Graphic Option	\$994.00

COLORS



MORE COLORS AVAILABLE!

Additional charge applies. (Gray is standard.)

READY-FIT ALUMINUM SAND PIT COVERS

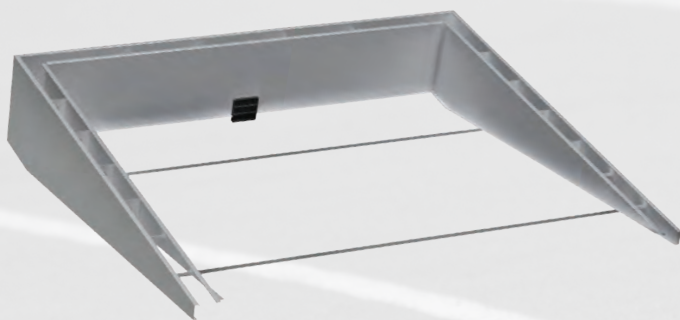
F44023C	23' Cover	\$13255
F44124C	24' Cover	\$13850
F44225C	25' Cover	\$14445
F44026C	26' Cover	\$14985
F44127C	27' Cover	\$15585
F44228C	28' Cover	\$16180
F44029C	29' Cover	\$16710
F44130C	30' Cover	\$17305
F44231C	31' Cover	\$17900

LJ/TJ SAND PIT COVERS

- Keep your sand pit clean and dry with solid vinyl sand pit covers or choose mesh if rain is not an issue
- Constructed of vinyl coated woven polyester
- Anchoring system: Bags filled with sand placed in pouches to weigh cover down
- Optional 5' x 5' multi-color graphic available
- Graphic worksheet and vector artwork must be provided

730147	Mesh 11' 9" x 25' 6"	\$1635
730147L	Mesh 11' 9" x 31' 6"	\$2390
730147V	Vinyl 11' 9" x 25' 6"	\$1910
730147VL	Vinyl 11' 9" x 31' 6"	\$2480
9453	Graphic Option	\$994

STEEPLECHASE



SAVE MONEY WITH VALUEPACKS!

VALUEPACK - SURFACE MOUNT

Package includes:

- F600 Steeplechase Water Jump Form
- 740144 Steeplechase Water Jump Barrier-surface mount version

VPF600 **\$12460**

FUNCTIONAL-FORM STEEPLECHASE WATER JUMP SYSTEMS

Gill Athletics has greatly simplified the installation of steeplechase water jump reservoirs with these Functional-Form systems. With the Functional-Form, installation precision is ensured to meet NFHS, NCAA and World Athletics specifications. Structure is fabricated of specially folded 1/8" aluminum to maximize strength and includes designed inner wall supports that allow the concrete to flow through and set evenly.

- F600: Compatible with 740144 water jump barrier
- F610: Compatible with 740134 water jump barrier
- Both models compatible with 730146 aluminum water jump cover
- Both models come standard with valve option: installed front wall valve to be connected with an outgoing pipe to the drain source
- *Meets NFHS, NCAA and World Athletics specifications*

F600 *Surface Mount Form* **\$8730**

F610 *Ground Sleeve Form* **\$8730**

VALUEPACK - GROUND SLEEVE

Package includes:

- F610 Steeplechase Water Jump Form with integrated ground sleeves
- 740134 Steeplechase Water Jump Barrier-ground sleeve version

VPF610 **\$11905**

WATER JUMP COVERS

- Each panel made from 9.5" x 1.75" x .125" aluminum planking framed with heavy duty aluminum angle
- Panels have four flush mount handles
- Recessed design for 1/2" (12mm) track surface
- Understructure supported with 4" x 2" aluminum beams

730146 **\$13015**



730146 *Shown with 730150C02SP*



STEEPLECHASE WATER JUMP BARRIERS

- Barrier beam is 4" x 4" square steel tubing with synthetic track material
- Pull pin design makes barrier height change a snap
- Welded gusset adds needed strength support to the beam
- Adjustable to three heights: 30", 33", 36"
- Aluminum water jump barrier seal available
- *Meets NFHS, NCAA and World Athletics specifications*
- *Surface mount barrier is World Athletics certified*
- *5 Year Limited Warranty*

740134 *Water Jump Barrier with Ground Sleeves* **\$3385**

740144 *Water Jump Barrier with Surface Mount*  **\$3945**

730150CXX *Aluminum Barrier Seal* **\$1575**

730150CXXSP *Aluminum Barrier Seal w/ Graphics* **\$1890**

MESH WATER JUMP BARRIER SEALS

- Add color and design to your steeplechase water jump
- Lightweight design will ease water barrier height change

740145202 *Royal Blue* **\$486**

740145203 *Red* **\$486**

740145204 *White* **\$486**

740145209 *Gray* **\$486**

740145212 *Black* **\$486**

740145204SP *White Mesh with Graphics* **\$702**

COLORS



COLORS





OFFICIAL EQUIPMENT SUPPLIER TO THE
NCAA TRACK & FIELD CHAMPIONSHIPS



BEST SELLER!

STEEPLECHASE BARRIER WITH DROP DOWN WHEELS

- 5" x 5" Barrier beam is constructed with aluminum extrusion and synthetic track material
- Wheels easily set and retract with foot engaged levers
- Pin pull design allows for simple barrier height adjustment
- Welded gusset adds needed strength support to the beam
- Adjustable to three heights: 30", 33", 36"
- Meets NFHS, NCAA and World Athletics specifications, World Athletics certified
- 5 Year Limited Warranty

740150	1 x 5m Barriers, 3 x 4m (4)		\$18480/set
740150131	4m Barrier; 13' Width		\$4665/ea
740150161	5m Barrier; 16' 5" Width		\$5080/ea



STEEPLECHASE BARRIER

- 5" x 5" Barrier beam is constructed with aluminum extrusion and synthetic track material
- Pin pull design allows for simple barrier height adjustment
- Welded gusset adds needed strength support to the beam
- Adjustable to three heights: 30", 33", 36"
- Optional wheel kit for manual addition of wheels for transportation
- Meets NFHS, NCAA and World Athletics specifications, World Athletics certified
- 5 Year Limited Warranty



On all Steeplechase Barriers
Call for Details.



740140	1 x 5m Barriers, 3 x 4m (4)		\$13170/set
740140131	4m Barrier; 13' Width		\$3285/ea
740140161	5m Barrier; 16' 5" Width		\$3725/ea
74014050	Wheels (4)		\$279/set



6' TRAINING BARRIER

740140061	6' Training Steeplechase Barrier		\$2635
740150061	6' Training Barrier with Drop Down Wheels		\$4370

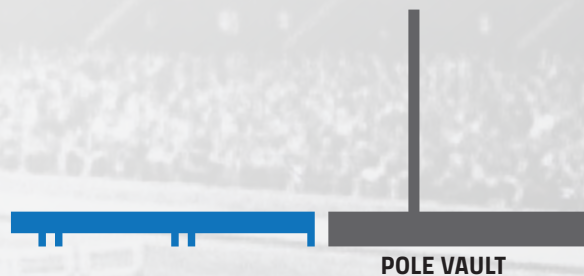


RAISED RUNWAYS

In the past, these types of runway systems have been priced upwards to \$75k! You can now have this product at a fraction of that price. The Gill Raised Runway allows for the flexibility to design runways that will accommodate the pole vault, long jump and triple jump for all levels of competition and practice.

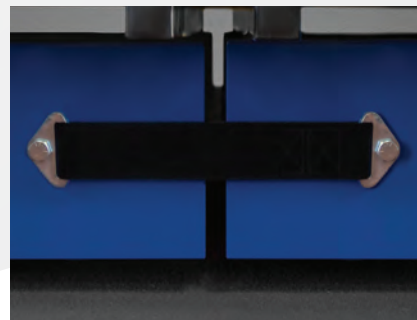
The basic unit is an 8' x 4' general runway section. Specialized sections incorporate a vault box or take-off board trays and blanking lids. The construction of each section is welded aluminum, with 1/2" plywood decking. Track surfacing is not included, so you can have your preference on surfacing.

Adjunct products for the Raised Runway include the Soft Shell Sand Pit Form for the long and triple jump (sand not included), and a pole vault pit elevating system.



CALL TODAY!

LET US HELP YOU PIECE TOGETHER THE **RAISED RUNWAY** SYSTEM THAT BEST FITS YOUR NEEDS.



CUSTOMIZABLE RUNWAY

Powder Coat

01 LIGHT BLUE	02 ROYAL BLUE	03 RED	04 WHITE	05 ORANGE	06 YELLOW GOLD	07 SILVER	08 OLD GOLD
09 GRAY	10 MAROON	11 PURPLE	12 BLACK	13 NAVY BLUE	14 KELLY GREEN	15 DARK GREEN	

*Gray and Black powder coat available in Gloss or Flat

BALLSTOPS

10' - 40' TALL BALLSTOP SYSTEMS

- 10' use 2" Sch 40 2-3/8" aluminum tube-36# Netting
- 12', 15' and 20' use 4" diameter, 1/8" wall aluminum tube - #36 Netting
- 25' and 30' use 6" Sch 40 aluminum tube - #36 Netting
- 35' and 40' use 6" Sch 40 steel tube - #36 Netting
- All Poles 10'-40' have a vertical support cable for additional net support
- Ground sleeves included
- All poles are powder coated in architectural black
- 5 Year Warranty

HERE FOR YOU!

CALL TODAY AND WE'LL HELP GET THE **BALLSTOP** SYSTEM THAT BEST FITS YOUR FACILITY.



On all Gill Ballstops
Call for Details.



BALLSTOP NET RELEASE CLIPS

Designed to drop the protective netting in high winds before any pole or hardware failure occurs.

- Marine Grade HDPE material
- Designed to break and drop nets in high winds, 20' and shorter or 25' and taller
- Sold in pack of 10 clips

739000 20' Ballstops and shorter **\$139**

739001 25' Ballstops and taller **\$139**

PORTABLE BALLSTOP SYSTEM

The Ballstop Systems were designed to be set up and removed as needed.

- 10' use 2" Sch 40 2-3/8" aluminum tube-36# Netting
- Poles have a vertical support cable for additional net support
- The portable system uses a platform base with wheels that is weighted down by four 5 gallon jugs (included)
- All poles are now powder coated in architectural black.
- 5 Year Warranty



OFFICIAL TRACK & FIELD
EQUIPMENT SUPPLIER

SINCE 1918

GILL[®]

ATHLETICS

In 1921 hall of fame athlete-turned-coach Harry L. Gill helped organize the first NCAA Track & Field Championship event. His team entered and won that inaugural national title. We are proud to honor Harry Gill's legacy and vision for the sport through Gill Athletics' role as the official equipment supplier of the NCAA Track & Field Championships.



C4

C3



C5

CONTINUUM™

THE WORLD'S FASTEST HURDLES JUST STEPPED THINGS UP!



OFFICIAL TRACK & FIELD EQUIPMENT SUPPLIER

View the full team on pages 38-39



601 Mercury Drive
Champaign, IL 61822
USA



FREEDOM TO FOCUS ON YOUR ATHLETES



2023 TRACK+FIELD CATALOG

GILLATHLETICS.COM
601 MERCURY DRIVE | CHAMPAIGN, IL 61822

800.637.3090
SALES@GILLATHLETICS.COM

Prefer an E-Catalog instead? To update your future mailings preferences go to www.gillporter.com/gill_store/contact