

JOIN OUR GAME

GRINDE
SERIES



**CUSTOM
STYLE
PERFORMANCE**



WWW.JOGSPORTSWEAR.COM

JOIN OUR GAME

JOG is Join Our Game -- an idea built on inclusivity, not exclusivity. We're as much about small town teams with big dreams as we are about big time teams who leave it all on the field; every time. We believe every player deserves a quality jersey with a custom look that makes them feel like a pro.

JOG is driven to exceed our customers expectations with a better jersey buying experience through personal interaction, complete customization, and professional, sustainable quality at a price all teams can afford. Your look, done right, fairly priced, on time -- Join our Game.

JOG
JOIN OUR GAME

INDEX

REPLAY Series.....	1
GRINDE Series.....	2
Fabric Descriptions.....	3-4
Color Chart.....	5
Size Chart.....	6

SPORTS

Sweeper Pro Soccer Uniforms.....	7
Cross Bar Goalie Uniforms.....	8
Soccer Uniform Patterns.....	9-12
Slam Dunk Hybrid Pro Basketball Uniforms.....	13
Tomahawk Pro Basketball Uniforms.....	14
Basketball Patterns.....	15-16
Grand Slam Pro Baseball/Softball Jerseys.....	17
Diamond Hybrid Pro Baseball/Softball Jerseys.....	18
Diamond Pro Sublimation Baseball/Softball Jerseys...19	
Slider Baseball/Softball Pants.....	20
Baseball/Softball Patterns.....	21-23
Spike Pro Volleyball Uniforms.....	24
Volleyball Patterns - Men's cut.....	25-26
Volleyball Patterns - Women's cut.....	27-28
The Rack Pro Lacrosse Uniforms.....	29
Lacrosse Patterns.....	30
The Scrum Pro Rugby Uniforms.....	31
The Wheeling Touch Rugby Uniforms.....	32
Rugby/Touch Rugby Patterns.....	33-34
Track & Field Sprinter Pro Singlets.....	35
Track & Field Patterns.....	36
American Football Pro Uniforms.....	37

APPAREL

Performance T-Shirts.....	38
T-Shirt Patterns.....	39-40
Performance Polos.....	41
Performance Polo Patterns.....	42-43
Performance Shorts.....	44
Performance Shorts Patterns.....	45
Performance/Soft Shell Jackets.....	46
Jacket Patterns.....	47
Everest Surge.....	48
Everest Surge Patterns.....	49
Performance Tracksuits.....	50
Performance Tracksuit Patterns.....	51
Performance Hoodie/Joggers.....	52
Performance Hoodie Patterns.....	53-54
Performance Jogger Patterns.....	55
Hats.....	56
Terms & Conditions.....	56

Same custom product, now eco-friendly



1

We take empty PET bottles and restyle the plastic into thread.



2

Using this thread, we've developed innovative fabrics to provide more sustainable alternatives.



3

JOG Athletics is proud to be one of the major suppliers of eco-friendly products.

REACT RENEW REPURPOSE

REPLAY is JOG's Eco Series that uses newly developed, environmentally friendly fibers made from recycled PET bottles. Specialized polymerization-spinning technologies are employed to produce a high-quality recycled PET fiber. Recycled PET bottles can help slow global warming and save our planet by reducing environmental pollution, cutting back fossil fuel and energy consumption and decreasing CO₂ emissions into the atmosphere.

GRINDE

S E R I E S



**BREW IT. SIP IT.
WEAR IT.**

Coffee is not just for drinking anymore. It's now part of our apparel. We repurpose coffee grounds and layer them into fabrics that wick away moisture and control odor. Grinde brings a whole new meaning to your morning cup of joe.



DRY TOUCH



LOW CONDENSATION



ODOR CONTROL



ECO FRIENDLY



UV PROTECTION



VaporICE Plus & Super Plus

- VI Plus - 100% Recycled Polyester (160g/m²)
- VI Super Plus - 100% Recycled Polyester (128 g/m²)
Eco-friendly, superior dry touch and cool comfortable fit
Application - T-Shirts, Polos, Shorts, Soccer, Basketball, Volleyball, Badminton, Tennis and Golf



Everest Power Flex Peak

- 88% Nylon, 12% Spandex
Durable water repellent, 4-way stretch and anti UV
Application - Tracksuits



VaporICE Vertical

- 100% Recycled PET Vertical Mesh
Wicking Treatment (157g/m²)
Application - T-Shirts, Shorts, Basketball, Lacrosse and Baseball



Power Flex Pique

- Power Flex Pique - 94% Polyester, 6% Spandex pique (160g/m²)
Anti-bacterial and UV protection
Flexible stretch, comfortable and superior wicking
Application - Polos, Golf and Tennis



VaporICE Drip

- 65% Polyester, 35% Recycled Grinde Polyester
Polyester soft double PK fabric (160 g/m²)
Fast drying, odor control, UV-Protection
Eco-friendly, flexible stretch and comfortable fit
Application - T-Shirts, Polos and Shorts



Thermal Form Replay

- 100% Recycled Polyester pique fleece (250 g/m²)
Back side brushed, shields the cold & wind
Application - Jackets, Hoodies and Joggers



VaporICE Everest

- 100% Micro Woven Polyester (110g/m²)
Dobby weave
Durable, yet soft hand feel
Application - Tracksuits and Shorts



Power Flex Yield Thermal Form

- 89.3% Micro Recycled Polyester, 10.7% Spandex
Sanding face with brushed back fleece (285 g/m²)
Application - Jackets and Joggers



VaporICE T-Force Stretch

- VI T-Force Stretch - 100% Recycled Polyester (155 g/m²)
Plus permanent wicking yarn with mechanical stretch yarn
Sheer looking fabric with honeycomb texture
Application - T-Shirts, Shorts, Polos and Golf



Power Flex Mogul

- 89% Polyester, 11% Spandex (255 g/m²)
Flexible stretch, comfortable and excellent wicking
Application - Lacrosse, Volleyball, Track & Field and Rugby



Power Flex Elite

- Power Flex - 88% Polyester, 12% Spandex
(moisture management)
Flexible stretch, comfortable and superb wicking
Application - T-Shirts



Power Flex Zorro Thermal Form

- 51% Polyester, 42% Recycled Grinde Polyester, 7% Spandex (275 g/m²)
4-way stretch, thermal functional PK fleece fabric
Application - Jackets, Joggers and Hoodies



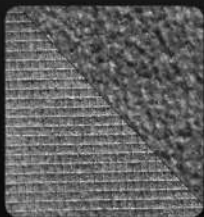
Everest Surge

- 100% Polyester
Water repellent, a polished, smooth finish that is lightweight yet, durable
Application - Jackets



Dura Light Amateur

- 100% Polyester (152 g/m²)
Light weight yet, durable
Application - Baseball and Lacrosse



Everest Storm Soft Shell

- 86% Polyester, 14% Spandex (314 g/m²)
4-way stretch, brushed back fleece, water repellent
Application - Jackets



Air Knit Pro

- 100% Recycled Polyester (222 g/m²)
Constructed for durability, breathability and performance
Application - Lacrosse



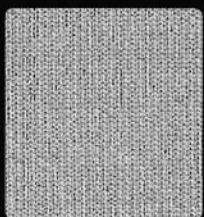
Poly Stretch Replay

- 71.5% Recycled Polyester, 28.5% Stretch Polyester (208 g/m²)
Quick dry, 4-way stretch
Application - Lacrosse, Baseball Rugby and American Football (Replica)



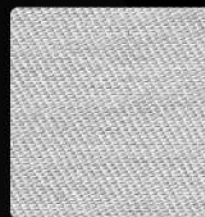
Poly Pro-PK Replay

- 37.5% Recycled Polyester, 62.5% Polyester (270 g/m²)
Stronger yarn count for durability
Enhanced performance against pilling
Application - Baseball Pants



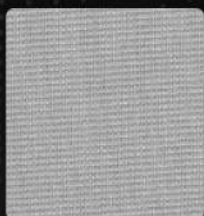
Pro Y Stretch

- 100% Polyester (262 g/m²)
Quick dry, 4-way stretch
Application - American Football



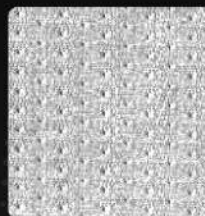
W-Poly

- 100% Polyester (200 g/m²)
Application - Rugby



Poly Pro Diamond

- 100% Polyester (233 g/m²)
Application - Baseball Pants



Diamond Pro Mesh

- 100% Polyester (160 g/m²)
Durable breathability
Application - Basketball, Lacrosse, Track & Field and Baseball



PMS 3308C
FOREST GREEN



PMS 7484C
DARK GREEN



PMS 3425C
DALLAS GREEN



PMS 365C
KELLY GREEN



PMS 802C
NEON GREEN



PMS 902C
MISSION GREEN



PMS 648C
TORONTO BLUE



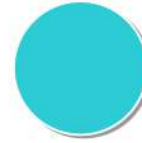
PMS 2384C
FINLAND BLUE



PMS 2142C
COLUMBIA BLUE



PMS 2171C
POWDER BLUE



PMS 319C
PRO BLUE GREEN



PMS 7715C
TEAL



PMS 2645C
LIGHT PURPLE



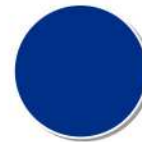
PMS 3566C
PURPLE



PMS 274C
KINGS PURPLE



PMS 2758C
DARK ROYAL



PMS 287C
VARSITY ROYAL



PMS 282C
DARK NAVY



PMS 212C
HOT PINK



PMS 7645C
MAROON



PMS 195C
CARDINAL



PMS 7638C
49ERS RED



PMS 201C
SCARLET RED



PMS 200C
UNIVERSITY RED



PMS 7417C
DARK ORANGE



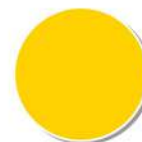
PMS 021C
ORANGE



PMS 7549C
VARSITY GOLD



PMS 7409C
LIGHT GOLD



PMS 109C
MICHIGAN MAIZE



PMS 102C
YELLOW



PMS 7506C
CREAM



PMS 7527C
VINTAGE CREAM



PMS 4525C
LIGHT VEGAS GOLD



PMS 468C
DUST GOLD



PMS 466C
NUGGET GOLD



PMS 440C
BROWN



BLACK



PMS 7540C
KNIGHTS GREY



COOL GREY 9C
MID GREY

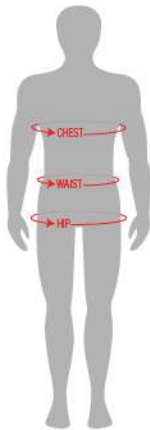


PMS 429C
PRO SILVER



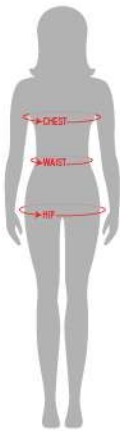
WHITE

MEN



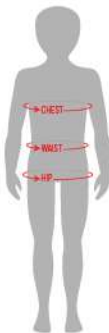
SIZE	CHEST	WAIST	HIP
AS	34.5 - 37	29 - 31	35.5 - 37.5
AM	37.5 - 40	31.5 - 33.5	38 - 40
AL	40.5 - 43.5	34 - 37.5	41 - 43
AXL	44 - 47.5	38 - 42	44 - 46
A2XL	48 - 52	43 - 47	47 - 50
A3XL	53 - 56	48 - 52	51 - 54

WOMEN



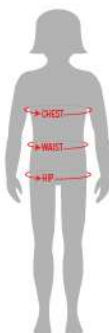
SIZE	CHEST	WAIST	HIP
AXS	31.5 - 33.5	24 - 26	34 - 36
AS	33.5 - 35.5	26.5 - 28.5	36.5 - 38.5
AM	35.5 - 38.5	29 - 31	39 - 41
AL	38.5 - 41.5	31.5 - 33.5	41.5 - 43.5
AXL	41.5 - 44.5	34.5 - 36.5	44.5 - 46.5
A2XL	44.5 - 47	37 - 40	47 - 50

BOYS



SIZE	CHEST	WAIST	HIP
CHILD	23 - 24	22 - 23	25 - 26
YXS	24.5 - 26	23 - 24	27 - 28
YS	26.5 - 28	24 - 25	28 - 29
YM	28.5 - 30	25 - 27	29.5 - 31
YL	30.5 - 32	27.5 - 28.5	31.5 - 33
YXL	32.5 - 34	28.5 - 30	33.5 - 35

GIRLS



SIZE	CHEST	WAIST	HIP
YS	25.5 - 27	23 - 24	27.5 - 29.5
YM	27.5 - 29	24.5 - 26	30 - 32
YL	29.5 - 31	26.5 - 28	32.5 - 34

CHEST: measure around the fullest part of your chest, keeping the measuring tape horizontal.

WAIST: measure around the smallest part of the torso area.

HIP: measure around the fullest part of your hip and ensure the tape is straight.



JOG's Sweeper Pro jerseys and shorts allow for a fully custom look on the pitch. This REPLAY series (eco-friendly) sublimated soccer kit will keep you cool, refreshed due to the dry and comfortable fit of our 100% recycled VaporICE material.

JERSEY & SHORTS DESCRIPTION

- Fully sublimated
- Light-weight feel and superior performance
- Superior wicking capabilities
- Elastic tape on the collar to add comfort and durability
- Custom inseams available
- Inner lining (optional)
- Full elastic waistband (50% nylon, 20% polyester & 30% spandex) with draw cord
- Men, women and youth cuts available
- Eco-friendly soccer jersey & shorts

FABRIC CONTENT



Jersey

- VaporICE Super Plus (Replay Series)

Shorts

- VaporICE Plus (Replay Series)

CARMELO
Jersey #521B / Shorts #1055B

FRESNO
Jersey #1057 / Shorts #1711



SANTIAGO
Jersey #1057B / Shorts #1711



MUROTO
Jersey #1057B / Shorts #119



NAZRET
Jersey #1057 / Shorts #1711



OZARK
Jersey #1057 / Shorts #1690



BELMONT JERSEY #1502 / SHORTS #81

JOG's Cross Bar goalie kits will make you look good in the box and unstoppable. This soccer jersey will keep you cool and refreshed due to the dry and comfortable fit of our 100% recycled VaporICE material.



Goalie padding provided in sleeves, shoulders and thigh areas



JERSEY & SHORTS DESCRIPTION

- Fully sublimated
- Light-weight feel and superior performance
- Superb wicking capabilities
- Elastic tape on the collar to add comfort and durability
- Sewn in sleeve padding and shoulder padding (optional)
- Sewn in thigh padding (optional)
- Full elastic waistband
(50% nylon, 20% polyester & 30% spandex) with draw cord
- Eco-friendly soccer jersey & shorts

FABRIC CONTENT



Jersey

- VaporICE Plus (Replay Series)

Shorts

- VaporICE Plus (Replay Series)



DOVER-G
Jersey #1504 / Shorts #81



PLYMOUTH
Jersey #1502 / Shorts #119



FRESNO-G
Jersey #1504 / Shorts #81



TIFFIN
Jersey #1504 / Shorts #119



SHIRT #551 - PAVIA
SHORTS #1711 - PAVIA



SHIRT #772B - NYON
SHORTS #1711 - NYON



SHIRT #1056 - SUPER SONIC
SHORTS #1711 - SUPER SONIC



SHIRT #1056 - FORLI
SHORTS #1711 - FORLI



SHIRT #1056 - BENDIGO
SHORTS #1711 - BENDIGO



SHIRT #1056 - JUNEAU
SHORTS #1711 - JUNEAU



SHIRT #1056 - ODESSA
SHORTS #1711 - ODESSA



SHIRT #1056B - MALAGA
SHORTS #1711 - MALAGA



SHIRT #1056B - AXIM
SHORTS #1711 - AXIM



SHIRT #1056B - FARO
SHORTS #1711 - FARO



SHIRT #1056B - SALDUS
SHORTS #1711 - SALDUS



SHIRT #1057 - CIDRA
SHORTS #1711 - CIDRA



SHIRT #1057 - GENOA
SHORTS #1711 - GENOA



SHIRT #1057 - OZARK
SHORTS #1711 - OZARK



SHIRT #1057 - LUXOR
SHORTS #1711 - LUXOR





SHIRT #1057 - INDIO
SHORTS #1711 - INDIO



SHIRT #1057 - NAZCA
SHORTS #1711 - NAZCA



SHIRT #1057 - AJO
SHORTS #1711 - AJO



SHIRT #1057 - FRESNO
SHORTS #1711 - FRESNO



SHIRT #1057 - NAZRET
SHORTS #1711 - NAZRET



SHIRT #1057 - OMAHA
SHORTS #1711 - OMAHA



SHIRT #1057 - YUMA
SHORTS #1711 - YUMA



SHIRT #1057 - HAVANA
SHORTS #1711 - HAVANA



SHIRT #1057 - MERLO
SHORTS #1711 - MERLO



SHIRT #1057 - DORI
SHORTS #1711 - DORI



SHIRT #1057B - NOVARA
SHORTS #1711 - NOVARA



SHIRT #1057B - MUROTO
SHORTS #1711 - MUROTO



SHIRT #1057B - BERNE
SHORTS #1711 - BERNE



SHIRT #1057B - BOISE
SHORTS #1711 - BOISE



SHIRT #1057B - VARNA
SHORTS #1711 - VARNA





SHIRT #1057B - INDY
SHORTS #1711 - INDY



SHIRT #1057B - DECATUR
SHORTS #1711 - DECATUR



SHIRT #1057B - IRONWOOD
SHORTS #1711 - IRONWOOD



SHIRT #1057B - NAXOS
SHORTS #1711 - NAXOS



SHIRT #1057B - CARMELO
SHORTS #1711 - CARMELO



SHIRT #1057B - SANTIAGO
SHORTS #1711 - SANTIAGO



SHIRT #1057B - DOVER
SHORTS #1711 - DOVER



SHIRT #1057B - TURIN
SHORTS #1711 - TURIN



SHIRT #1057B - KIEL
SHORTS #1711 - KIEL



CROSS BAR GOALIE UNIFORMS



SHIRT #1501 - VICTORIA
SHORTS #1711 - VICTORIA



SHIRT #1052 - BELMONT
SHORTS #81 - BELMONT



SHIRT #1054 - TIFFIN
SHORTS #119 - TIFFIN



SHIRT #1052 - PLYMOUTH
SHORTS #119 - PLYMOUTH





SHIRT #02 - STREATOR - G
SHORTS #81 - STREATOR - G



SHIRT #1052 - ZION - G
SHORTS #81 - ZION - G



SHIRT #1052 - HILO - G
SHORTS #1711 - HILO - G



SHIRT #1054 - SUPER SONIC - G
SHORTS #81 - SUPER SONIC - G



SHIRT #1054 - OZARK - G
SHORTS #81 - OZARK - G



SHIRT #1054 - FRESNO - G
SHORTS #81 - FRESNO - G



SHIRT #1054 - HAVANA - G
SHORTS #1711 - HAVANA - G



SHIRT #1054 - DORI - G
SHORTS #81 - DORI - G



SHIRT #1054 - SANTIAGO - G
SHORTS #1711 - SANTIAGO - G



SHIRT #1054 - DOVER - G
SHORTS #81 - DOVER - G



STRIKE EAGLE JERSEY #516 / SHORTS #516

JOG's Slam Dunk Pro uniforms combine the flexibility of sublimation with the tradition of Pro Tackle Twill logos and numbers. JOG's VaporICE moisture wicking Heat Removal Technology makes this the ultimate basketball kit whether you're slam-dunking or nailing threes at the buzzer.



Pro Tackle Twill
Logo and Numbers

JERSEY & SHORTS DESCRIPTION

- Light-weight feel and superior performance
- Enhance wicking capabilities
- Hybrid - sublimation and twill
- Pro tackle twill front logo + numbers (back / front)
- Elastic tape on the collar to add comfort and durability
- Variety of neck options
- VaporICE mesh backing (optional)
- Inner lining available
- 50% nylon, 20% poly, 30% spandex elastic waistband with draw cord
- Men, women and youth cuts available
- Eco-friendly basketball uniforms

FABRIC CONTENT



- VaporICE Vertical (Replay Series)
- VaporICE Plus (Replay Series)





GLOBEMASTER JERSEY #778 / SHORTS #778

JOG's Tomahawk Pro Sublimation jerseys and shorts are engineered for speed, performance and comfort. JOG's VaporICE moisture wicking Heat Removal Technology makes this the ultimate basketball kit whether you're slam-dunking or nailing threes at the buzzer.

JERSEY & SHORTS DESCRIPTION

- Light-weight feel and superior performance
- Enhance wicking capabilities
- Unlimited base colors and stripes available with sublimation
- Elastic tape on the collar to add comfort and durability
- Variety of neck options
- VaporICE mesh backing (optional)
- Inner lining available
- 50% nylon, 20% poly, 30% spandex elastic waistband with draw cord
- Men, women and youth cuts available
- Eco-friendly basketball uniforms

FABRIC CONTENT



- VaporICE Vertical (Replay Series)
- VaporICE Plus (Replay Series)



DOVER
Jersey #799 / Shorts #799



PHOENIX
Jersey #779 / Shorts #779



GHOSTRIDER
Jersey #779 / Shorts #779



SKY WARRIOR
Jersey #516 / Shorts #516



SHIRT #04 - STRIKE EAGLE
SHORTS #04 - STRIKE EAGLE



SHIRT #779 - DOVER
SHORTS #779 - DOVER



SHIRT #713 - TRACER
SHORTS #779 - TRACER



SHIRT #779 - INTRUDER
SHORTS #779 - INTRUDER



SHIRT #04 - CONVAIR
SHORTS #04 - CONVAIR



SHIRT #779 - GHOSTRIDER
SHORTS #779 - GHOSTRIDER



SHIRT #557 - AIRCO
SHORTS #557 - AIRCO



SHIRT #779 - BERMUDA
SHORTS #779 - BERMUDA



SHIRT #713 - ARSENAL
SHORTS #779 - ARSENAL



SHIRT #779 - CORONADO
SHORTS #779 - CORONADO



SHIRT #779 - ARADO
SHORTS #779 - ARADO



SHIRT #779 - DELTA DAGGER
SHORTS #779 - DELTA DAGGER



SHIRT #779 - STALLIONS
SHORTS #779 - STALLIONS



SHIRT #779 - AERO
SHORTS #779 - AERO



SHIRT #779 - PHOENIX
SHORTS #779 - PHOENIX



SHIRT #779 - HARPOON
SHORTS #779 - HARPOON



SHIRT #779 - CORSAIR
SHORTS #779 - CORSAIR



SHIRT #779 - AVRO PIKE
SHORTS #779 - AVRO PIKE



SHIRT #779 - EXTENDER
SHORTS #779 - EXTENDER



SHIRT #779 - HERCULES
SHORTS #779 - HERCULES



SHIRT #779 - GLOBEMASTER - III
SHORTS #779 - GLOBEMASTER - III



SHIRT #779 - VOODO
SHORTS #779 - VOODO



SHIRT #779 - VOYAGER
SHORTS #779 - VOYAGER



SHIRT #779 - FIREBALL
SHORTS #779 - FIREBALL



SHIRT #779 - SKY MASTER
SHORTS #779 - SKY MASTER



SHIRT #779 - SUPER SONIC
SHORTS #779 - SUPER SONIC



SHIRT #779 - AVIA - 23
SHORTS #779 - AVIA - 23



SHIRT #779 - PHANTOM - II
SHORTS #779 - PHANTOM - II



SHIRT #779 - GLOBEMASTER
SHORTS #779 - GLOBEMASTER



SHIRT #779 - NIGHTHAWK
SHORTS #779 - NIGHTHAWK



SHIRT #779 - MIG - 33
SHORTS #779 - MIG - 33



SHIRT #779 - ASCENDER
SHORTS #779 - ASCENDER



SHIRT #779 - SHADOW GAZER
SHORTS #779 - SHADOW GAZER



SHIRT #779 - SKY RAIDER
SHORTS #779 - SKY RAIDER



SHIRT #779 - STARLIFTER
SHORTS #779 - STARLIFTER



SHIRT #1503 - PROWLER
SHORTS #04 - PROWLER



SHIRT #779 - CESSNA-24
SHORTS #779 - CESSNA-24



SHIRT #04 - SKY HAWK
SHORTS #04 - SKY HAWK



SHIRT #04 - SKY WARRIOR
SHORTS #04 - SKY WARRIOR



SHIRT #779 - BERLINER
SHORTS #779 - BERLINER



STYLE#426D - EXPRESS

3 color placket striping and 3 color sleeve striping

JOG's Grand Slam Pro baseball/softball jersey is breathable, light-weight, yet durable. Throw on this jersey to keep you feeling cool and energized so you can swing for the cycle, dive for that shoestring catch or throw that perfect game!



Pro Twill Logos and Numbers

DESCRIPTION

- Pro Twill appliques, numbering, logo and lettering
- Light-weight feel and superior performance
- Superior wicking capabilities
- Elastic tape on the collar to add comfort and durability
- Mesh inserts on the side panels (optional)
- Full button, v-neck, two button style options
- Men, women, and youth cuts available

FABRIC CONTENT

- Dura Light Amateur
- Diamond Pro Mesh (for side panels or back side)



STYLE#426B - T-BONES



STYLE #1729 - EXPO



STYLE #2322 - CRUSHERS



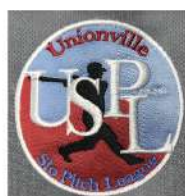
STYLE #832 - ISOTOPES



STYLE#426 - MINERS

2 color placket striping and 2 color sleeve striping

JOG's Diamond Pro Hybrid baseball/softball jersey (sublimation + Pro Twill appliques) is breathable, light-weight, yet durable. Throw on this jersey to keep you feeling cool and energized so you can swing for the cycle, dive for that shoestring catch or throw that perfect game!



Pro Twill Logos and Numbers

Sublimated

DESCRIPTION

- Sublimated jersey with Pro Twill appliques
- Light-weight feel and superior performance
- Enhance wicking capabilities
- Elastic tape on the collar to add comfort and durability
- Mesh inserts on the side panels and back side (optional)
- Fully sublimated baseball jersey
- Full button, v-neck, two button style options
- Men, women, and youth cuts available

FABRIC CONTENT

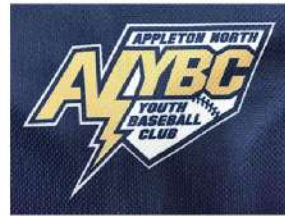


- Dura Light Amateur
- VaporICE Vertical Mesh (Replay Series)
- Poly Stretch Replay (Replay Series)
- Diamond Pro Mesh (for side panels or back side)



BASEBALL STYLE #426D - CHUKARS SOFTBALL STYLE #1403 - BARON

JOG's Diamond Pro sublimation baseball/softball jersey is breathable, light weight, yet durable. Throw on a Diamond Pro jersey and maximize your game feeling cool and energized to swing for the cycle, dive for that shoestring catch or throw that perfect game!



Unlimited Graphics
and Logos

DESCRIPTION

- Light-weight feel and superior performance
- Superior wicking capabilities
- Elastic tape on the collar to add comfort and durability
- Mesh inserts on the side panels (optional)
- Fully sublimated baseball jersey
- Full button, v-neck, or two button style options
- Men, women, and youth cuts available

FABRIC CONTENT



- Dura Light Amateur
- VaporICE Vertical Mesh (Replay Series)
- Poly Stretch Replay (Replay Series)
- Diamond Pro Mesh (for side panels or back side)



STYLE #1569 - TIDES



STYLE #426B - SENATORS



STYLE #426 - ADMIRALS



STYLE #1875 - STRIPERS



STYLE #1875 - DEVILS



STYLE#702D - SPINNERS
(PIPING 1 CM - 2 IN - 1 CM)

JOG's baseball/softball pants (and shorts) deliver breathability and comfort on the diamond. Their midweight, durable construction are tailored to keep you dry and performing at your best on game day.

DESCRIPTION

- Mid-weight knit fabric that delivers game day comfort and superior performance
- Tapered pro style belt loops
- Dual-snap waistband and zip fly
- Sublimated pants optional
- 50% nylon + 20% polyester + 30% spandex elastic waistband
- Elastic, velcro and open bottom hems (optional)
- Men, women and youth cuts available

FABRIC CONTENT



- Poly Pro PK
- Poly Stretch Replay (Replay Series)
- Poly Pro Diamond



STYLE - SLIDER SHORTS



STYLE #2037 - KNICKERS
(Piping 1 cm)



STYLE #702D - SPINNERS



STYLE #1810 - DRILLERS
(Piping 1/8 in)

BASEBALL/SOFTBALL JERSEY PATTERNS



1 COLOR STRIPING

SHIRT #426B - SENATORS  



2 COLOR STRIPING

SHIRT #426B - MINERS  



3 COLOR STRIPING

SHIRT #426B - EXPRESS  



SHIRT #426B - BOOMERS  



1 COLOR STRIPING

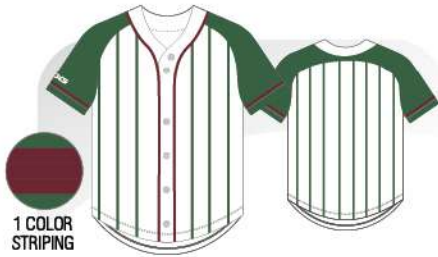
SHIRT #426B - NATURALS  



SHIRT #426B - T-BONES  



SHIRT #426B - YARDBIRDS 




1 COLOR STRIPING

SHIRT #426B - CLIPPERS 



5 COLOR STRIPING

SHIRT #426B - HOPPERS 



3 COLOR STRIPING

SHIRT #426D - REDHAWKS 



2 COLOR STRIPING

SHIRT #426D - CAPITALES 



2 COLOR STRIPING

SHIRT #426D - TRAVELERS 



1 COLOR STRIPING

SHIRT #426D - DOVER  



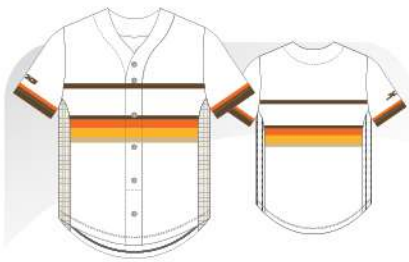
1 COLOR STRIPING

SHIRT #426D - CHUKARS 

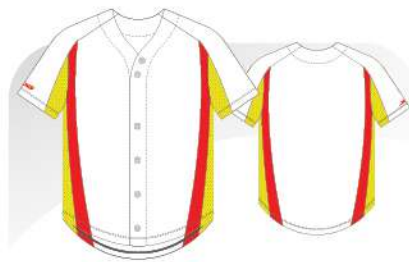


1 COLOR STRIPING

SHIRT #426D - STRIPERS 



SHIRT #426D - LE ROYAL



SHIRT #832 - ISOTOPES



3 COLOR STRIPING

SHIRT #880 - BANDITS



SHIRT #1569 - TIDES



SHIRT #1574 - ACES



3 COLOR STRIPING

SHIRT #1574 - BISONS



1 COLOR STRIPING

SHIRT #1574 - ROCKERS



SHIRT #1729 - EXPO



3 COLOR STRIPING

SHIRT #1875 - DEVILS

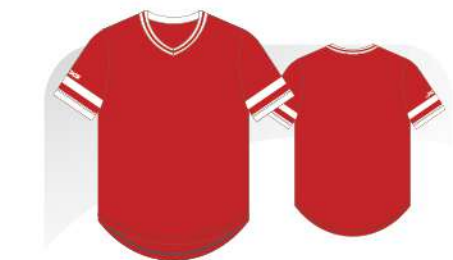


SHIRT #2025 - ADMIRALS



1 COLOR STRIPING

SHIRT #2025 - MISSIONS



SHIRT #2322 - CRUSHERS



BASEBALL/SOFTBALL VEST PATTERNS



SHIRT #1403 - BARON



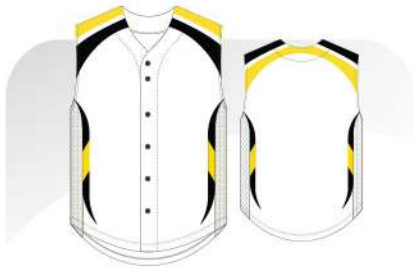
3 COLOR STRIPING

SHIRT #1403 - CLIPPER



SHIRT #1403 - MATRIX





SHIRT #1403 - TURIN



SHIRT #1403 - SWIFTER



SHIRT #1403 - ROGUE



SHIRT #1403 - DOVER



SHIRT #1403 - STRIPERS



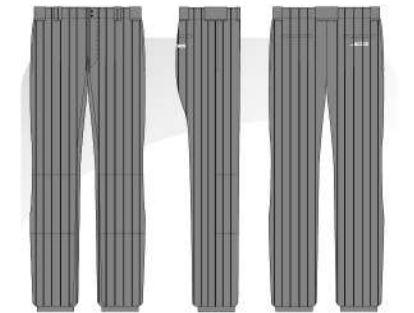
SHIRT #607 - SALTILLO



BASEBALL / SOFTBALL PANTS PATTERNS



PANTS #702 - CLASSIC



PANTS #702 - CORNBELTER



PANTS #702B - CHASERS



1 cm.
0.5 in.
1 cm.



PANTS #702D - SPINNERS



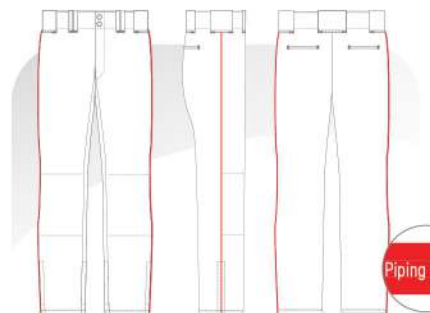
1 cm
Piping 2 in
1 cm



PANTS #1810 - DRILLERS



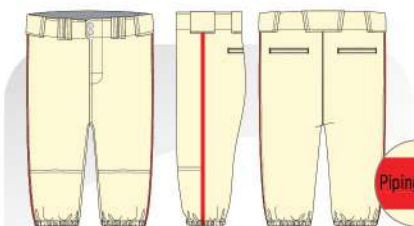
Piping 1 cm



PANTS #1935 - SMOKIES



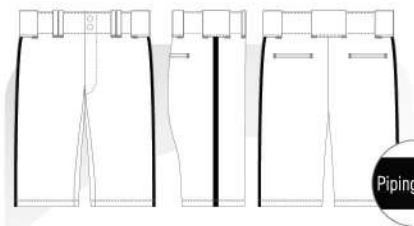
Piping 1/8 in



PANTS #2037 - KNICKERS



Piping 1 cm



SLIDER SHORTS



Piping 1 cm



MAZO
SHIRT #1059 / SHORTS #119



TOCO CLASSIC-VW
SHIRT #1902 / SHORTS #777

JOG's Spike Pro high-performance volleyball uniforms are fully sublimated featuring Heat Removal Technology (HRT). Our Replay Series (eco-friendly) materials provide increased comfort and breathability and complete range of motion for all movements at the beach or on the court.

JERSEY & SHORTS DESCRIPTION

- Fully sublimated
- Light-weight feel and superior performance
- Enhance wicking capabilities
- Elastic tape on the collar to add comfort and durability
- Inner lining (optional)
- Spandex shorts (optional)
- Full elastic waistband with draw cord (50% nylon, 20% polyester & 30% spandex)
- Men, women and youth cuts available
- Eco-friendly volleyball jersey & shorts

FABRIC CONTENT



Jersey

- VaporICE Super Plus (Replay Series)

Shorts

- VaporICE Plus (Replay Series)
- Power Flex Mogul



CORAL
Jersey #1054 / Shorts #1055



DESTIN
Jersey #1054 / Shorts #953



MANZANITA
Jersey #1056B / Shorts #1690



REDONDO
Jersey #1059 / Shorts #1040B



MORRO
Jersey #1059B / Shorts #119

SPIKE PRO VOLLEYBALL UNIFORMS - MEN'S CUT - SLEEVELESS



SHIRT #1059 - MAZO
SHORTS #119 - MAZO



SHIRT #1059 - BELMAR
SHORTS #119 - BELMAR



SHIRT #1059 - SALVO
SHORTS #1711 - SALVO



SHIRT #1059 - HERMOSA
SHORTS #1711 - HERMOSA



SHIRT #1059B - MORRO
SHORTS #119 - MORRO



SHIRT #1059B - SABAL
SHORTS #119 - SABAL



SHIRT #1059 - NEWPORT
SHORTS #119 - NEWPORT



SHIRT #1059 - ENCINITAS
SHORTS #1711 - ENCINITAS



SHIRT #1059 - SUPER SONIC
SHORTS #1711 - SUPER SONIC



SHIRT #1059 - REDONDO
SHORTS #1040B - REDONDO



SHIRT #1047 - LAGOS
SHORTS #1040 - LAGOS



SHIRT #1059B - VENICE
SHORTS #119 - VENICE



SPIKE PRO VOLLEYBALL UNIFORMS - MEN'S CUT - SHORT SLEEVE



SHIRT #883 - SILOSO
SHORTS #119 - SILOSO



SHIRT #1056 - xxxxxx
SHORTS #1040B - xxxxxx



SHIRT #1056B - SOLANA
SHORTS #1711 - SOLANA



SPIKE PRO VOLLEYBALL UNIFORMS - MEN'S CUT - SHORT SLEEVE



SHIRT #1056B - MANZANITA
SHORTS #1690 - MANZANITA



SHIRT #1056B - CONCHA
SHORTS #1711 - CONCHA



SHIRT #1056B - BANDON
SHORTS #1690 - BANDON



SHIRT #1057 - TURIN-R
SHORTS #1711 - TURIN-R



SHIRT #1057 - INDIGO
SHORTS #1711 - INDIGO



SHIRT #1057B - POMONA
SHORTS #1040 - POMONA



SHIRT #1057B - VERO
SHORTS #1711 - VERO



SHIRT #1057B - FAROS
SHORTS #1711 - FAROS



SHIRT #1057B - KALIKO
SHORTS #1033 - KALIKO



SHIRT #1057B - SONA
SHORTS #1040 - SONA



SHIRT #1057B - TENNO
SHORTS #119 - TENNO



SHIRT #1057B - DOVER
SHORTS #1711 - DOVER



SHIRT #1057B - SOUTHPORT
SHORTS #1711 - SOUTHPORT



SHIRT #1057B - KARON
SHORTS #1711 - KARON



SHIRT #1564 - CORAL
SHORTS #119B - CORAL

SPIKE PRO VOLLEYBALL UNIFORMS - WOMEN'S CUT - SHORT SLEEVE



SHIRT #1054 - SALEM
SHORTS #119 - SALEM



SHIRT #1054 - PONCE
SHORTS #1055 - PONCE



SHIRT #1054 - CAPIRA
SHORTS #1055 - CAPIRA



SHIRT #1054 - VERO
SHORTS #1055 - VERO



SHIRT #1054 - SONA
SHORTS #1055 - SONA



SHIRT #1054 - SELENA
SHORTS #1055 - SELENA



SHIRT #1054 - DESTIN
SHORTS #953 - DESTIN



SHIRT #1054 - TIWI
SHORTS #1055 - TIWI



SHIRT #1054B - INDIGO
SHORTS #777 - CLASSIC-VW



SHIRT #1054 - FAROS
SHORTS #1055 - FAROS



SHIRT #1054 - MAZO
SHORTS #119 - MAZO



SHIRT #1054 - BELMAR
SHORTS #119 - BELMAR



SHIRT #1902 - UERO
SHORTS #1055 - UERO



SHIRT #1902 - TOCO
SHORTS #777 - CLASSIC-VW



SHIRT #1054 - CORAL
SHORTS #1055 - CORAL

SPIKE PRO VOLLEYBALL UNIFORMS - WOMEN'S CUT - SHORT SLEEVE



SHIRT #521 - TURIN-R
SHORTS #777 - TURIN-R



SHIRT #1054 - KALIKO
SHORTS #1055B - KALIKO



SHIRT #1054 - POMONA
SHORTS #1055 - POMONA



SPIKE PRO VOLLEYBALL UNIFORMS - WOMEN'S CUT - SLEEVELESS



SHIRT #578 - CERROS
SHORTS #578 - CERROS



SHIRT #1053 - MUARA
SHORTS #1055 - MUARA



SHIRT #1053 - RIO
SHORTS #777 - CLASSIC-VW



SHIRT #1053 - MORRO
SHORTS #777 - CLASSIC-VW



SHIRT #1053 - NEWPORT
SHORTS #119 - NEWPORT



SHIRT #1053 - REHOBOTH
SHORTS #777 - CLASSIC-VW



SPIKE PRO VOLLEYBALL UNIFORMS - WOMEN'S CUT - LONG SLEEVE



SHIRT #562 - MENDOCINO
SHORTS #1055 - MENDOCINO



SHIRT #1743 - LIDO
SHORTS #777 - CLASSIC-VW



SHIRT #1743 - RINCON
SHORTS #777 - CLASSIC-VW



SHIRT #1743 - AVALON
SHORTS #1055 - AVALON



SHIRT #1743 - BIANCA
SHORTS #777 - CLASSIC-VW



SHIRT #1743 - ORCHID
SHORTS #777 - CLASSIC-VW





MEN'S CUT

LAUNCHER

SHIRT #2043 / SHORTS #2044



WOMEN'S CUT

HOOVER

SHIRT #2362 / SKIRT #2363

JOG's fully sublimated, high performance lacrosse uniforms allow for precise color matching and spirited designs. Each uniform is designed using lightweight, breathable and durable materials - suitable for field or box play.

FEATURES

- Fully sublimated
- Light-weight feel and superior performance
- Elastic tape on the collar to add comfort and durability
- Mesh inserts on back or side panels (optional)
- Men, women and youth cuts available
- Upgrade to Pro Tackle Twill embroidery of logos and lettering (optional)

FABRIC CONTENT



- **The Laxer** : Dura Light Amateur
- Air Knit Pro (Replay Series)
- VaporICE Plus (Replay Series)
- VaporICE Vertical (Replay Series)
- Poly Stretch (Replay Series)
- Power Flex Mogul



SWARMER

Jersey #033 / Shorts #034



SPIDER

Jersey #033 / Shorts #034



LEGION

Jersey #033 / Shorts #034



ENGINEER

Jersey #2045 / Shorts #2046

THE RACK PRO LACROSSE UNIFORMS - MEN'S CUT



SHIRT #2043 - LAUNCHER
SHORTS #2044 - LAUNCHER



SHIRT #2045 - ENGINEER
SHORTS #2046 - ENGINEER



SHIRT #033 - SPIDER
SHORTS #034 - SPIDER



SHIRT #033 - SWARMER
SHORTS #034 - SWARMER



SHIRT #033 - LEGION
SHORTS #034 - LEGION



SHIRT #033 - BARRAGE
SHORTS #034 - BARRAGE



SHIRT #033 - TRIPLE THREAT
SHORTS #034 - TRIPLE THREAT



SHIRT #033 - SPHERE
SHORTS #034 - SPHERE



SHIRT #2314 - HOUNDER
SHORTS #2315 - HOUNDER



THE HATTY PRO LACROSSE UNIFORMS - WOMEN'S CUT



SHIRT #2362 - HOOVER
SHORTS #2363 - HOOVER



SHIRT #2362 - COVER
SHORTS #2363 - COVER



SHIRT #2362 - PEARLS
SHORTS #2363 - PEARLS



SHIRT #2362 - MIDOIE
SHORTS #2363 - MIDOIE



SHIRT #2362 - KAYAK
SHORTS #2363 - KAYAK



SHIRT #2362 - PLUNGER
SHORTS #2363 - PLUNGER





ELUSIVE **JERSEY #1400 / SHORTS #1436**

JOG's custom Rugby uniforms are designed for performance and comfort while combating wear and tear during play. Whether you're driving to the goal line or fighting off a defender, the "Scrum Pro" uniform will maximize your performance on the pitch.

JERSEY & SHORTS DESCRIPTION

- Fully sublimated
- Flexible stretch
- Excellent wicking capabilities
- Elastic tape on the collar to add comfort and durability
- Custom sleeves option (cap or full sleeves)
- Custom neck option
- Custom inseams available
- Athletic fit
- Inner lining (optional)
- Full elastic waistband with draw cord (50% nylon, 20% polyester & 30% spandex)
- Men and youth cuts available
- Eco-friendly rugby jersey & shorts



FABRIC CONTENT



Jersey

- Poly Stretch Replay (Replay Series)

Shorts

- W-Poly



SENTINEL
Jersey #1400 / Shorts #1436



KOROVIN
Jersey #1400 / Shorts #1436



SPURR
Jersey #1903 / Shorts #1436



HIGHLANDER
Jersey #1903 / Shorts #1436



RIMO II **JERSEY #1053 / SHORTS #1055**

JOG's fully sublimated, high-performance touch rugby uniforms are produced using durable, yet lightweight and breathable materials. Whether driving to the goal or fighting off a defender, each uniform will maximize your performance on the pitch.

JERSEY & SHORTS DESCRIPTION

- Fully sublimated
- Light-weight feel and superior performance
- Flexible stretch
- Elastic tape on the collar to add comfort and durability
- Custom sleeves option (cap or full sleeves)
- Custom neck option
- Athletic fit
- Inner lining (optional)
- Full elastic waistband with draw cord (50% nylon, 20% polyester & 30% spandex)
- Women and youth cuts available
- Eco-friendly rugby jersey & shorts

FABRIC CONTENT



Jersey

- VaporICE Super Plus (Replay Series)

Shorts

- VaporICE Plus (Replay Series)
- Power Flex Mogul



JALYA
Jersey #1219 / Shorts #1055



NEBO
Jersey #1053B / Shorts #1055



BONA
Jersey #1219 / Shorts #1055



LOA
Jersey #1053B / Shorts #777

THE SCRUM PRO RUGBY UNIFORMS



SHIRT #1400 - ANTORA
SHORTS #1436 - ANTORA



SHIRT #1903 - SPURR
SHORTS #1436 - SPURR



SHIRT #1903 - TAKU
SHORTS #1436 - TAKU



SHIRT #1400 - SPECTRE
SHORTS #1436 - SPECTRE



SHIRT #1400 - ELUSIVE
SHORTS #1436 - ELUSIVE



SHIRT #1903 - DEFIANT
SHORTS #2319 - DEFIANT



SHIRT #1400 - K2
SHORTS #1436 - K2



SHIRT #1400 - KOROVIN
SHORTS #1436 - KOROVIN



SHIRT #1400 - DONOHO
SHORTS #1436 - DONOHO



SHIRT #1400 - BENITO
SHORTS #1436 - BENITO



SHIRT #1903 - DE ANZA
SHORTS #1436 - DEA NZA



SHIRT #1903 - TORO
SHORTS #1436 - TORO



SHIRT #1903 - SONORA
SHORTS #1436 - SONORA



SHIRT #1903 - ARROW
SHORTS #1436 - ARROW



SHIRT #1400 - OKMOK
SHORTS #1436 - OKMOK



THE SCRUM PRO RUGBY UNIFORMS



SHIRT #1400 - SENTINEL
SHORTS #1436 - SENTINEL



SHIRT #1400 - CRONIN
SHORTS #1436 - CRONIN



SHIRT #1400 - BONA
SHORTS #1436 - BONA



SHIRT #1400 - SABINIO
SHORTS #1436 - SABINIO



SHIRT #1903 - HIGHLANDER
SHORTS #1436 - HIGHLANDER



SHIRT #1400 - HUXLEY
SHORTS #1436 - HUXLEY

THE WHEELING TOUCH RUGBY UNIFORMS



SHIRT #1219 - JALYA
SKIRTS #1055 - JALYA



SHIRT #1219 - BONA
SKIRTS #1055 - BONA



SHIRT #1219 - MERU
SKIRTS #1055 - MERU



SHIRT #578 - NEVIS
SHORTS #578 - NEVIS



SHIRT #1053 - BIA
SHORTS #1055 - BIA



SHIRT #1053 - RIMO II
SHORTS #1055 - RIMO II



SHIRT #1053 - KULA
SHORTS #1055 - KULA



SHIRT #1053B - NEBO
SHORTS #1055 - NEBO



SHIRT #1053B - LOA
SHORTS #777 - LOA



SHIRT #1902 - RIMO I
SHORTS #777 - RIMO I



SHIRT #1902 - BORU
SHORTS #777 - BORU



SHIRT #1902 - BANFF
SHORTS #777 - BANFF



JERSEY #881 - SLATEX **SHORTS #906B - CLASSIC**

Sprint away from the competition in JOG's fully sublimated sprinter pro singlets. Made using Heat Removal Technology (HRT), each singlet is designed to keep you cool, dry and comfortable when running on the track or through the hills.

JERSEY & SHORTS DESCRIPTION

- Fully sublimated
- Light-weight feel and superior performance
- Excellent wicking capabilities
- Athletic fit mesh
- Optional mesh panels for added breathability
- Unlined or lined available
- Spandex shorts (optional)
- Full elastic waistband with draw cord (50% nylon, 20% polyester & 30% spandex)
- Optional mesh side panels to enhance breathability
- Men, Women and Youth cuts available
- Eco-friendly options available

FABRIC CONTENT



Jersey & Shorts

- VaporICE Super Plus (Replay Series)

Shorts

- VaporICE Plus (Replay Series)
- VaporICE Everest
- Power Flex Mogul



Style #882 - SONNY



Style #881 - FUEL



Style #881 - BREEZER



Style #906 - CLASSIC



Style #777 - SPANDEX



Style #906 - SWIFT



SHIRT #881B - CLASSIC
SHORTS #906 - CLASSIC



SHIRT #881B - BOLTER
SHORTS #906 - BOLTER



SHIRT #881 - XTRA
SHORTS #906 - XTRA



SHIRT #881 - SLATEX
SHORTS #906 - SLATEX



SHIRT #881 - BREEZER
SHORTS #906 - BREEZER



SHIRT #881 - SANTRO
SHORTS #906 - SANTRO



SHIRT #881 - FUEL
SHORTS #906 - FUEL



SHIRT #881 - SMOKER
SHORTS #906 - SMOKER



SHIRT #881B - HURRAH
SHORTS #906 - HURRAH



SHIRT #881 - SONNY
SHORTS #906 - SONNY



SHIRT #881 - RISER
SHORTS #906 - RISER



SHIRT #881 - ZIPPING
SHORTS #906 - ZIPPING



SHIRT #881 - MATRIX
SHORTS #906 - MATRIX



SHIRT #881 - SWIFTER
SHORTS #906 - SWIFTER



SHIRT #881 - ROGUE
SHORTS #906 - ROGUE



SHIRT #881 - INSPEED
SHORTS #906 - INSPEED



SHIRT #881 - LOLA
SHORTS #906 - LOLA



SHIRT #881 - ZOIEY
SHORTS #906 - ZOIEY



JERSEY #1960 - FLANKER

JOG's lightweight football jerseys are designed with 4-way stretch woven fabric that's moisture wicking and breathable for optimum comfort on the field. Each fully custom jersey is built for flexibility, durability and high performance.



Style #1960 - FLANKER



Style #2343 - ROVER



Style #1960 - GUNNER

FEATURES

- Fully sublimated jerseys
- Mesh inserts on back or side panels (optional)
- Men, women and youth cuts available
- Upgrade to Pro Tackle Twill embroidery of logos and lettering (optional)

FABRIC CONTENT



Replica wear



- Poly Stretch Replay (Replay Series)

Game wear


- Pro Y Stretch

AMERICAN FOOTBALL PATTERNS



Style #1960 - CLASSIC  



Style #1960 - GUNNER 




Style #2343 - ROVER  




Style #2344 - SOONER  



Style - WILDCAT 



Style - DROVERS 



Style - COMMODORES 



Style - COUGAR  



STYLE #1035 - CLASSIC



STYLE #2026 - STREAKER



STYLE #201 - CLASSIC

FEATURES

- Light-weight feel and superior performance
- Advance wicking capabilities
- Elastic tape on the collar to add comfort and durability
- Custom screen printing or sublimation available
- Men, women and youth cuts available
- Rib cuffs (optional for long sleeve t-shirts)

FABRIC CONTENT

- VaporICE T-Force Stretch (Replay Series)
- VaporICE Plus / VaporICE Super Plus (Replay Series)
- Power Flex Elite
- VaporICE Drip (Grinde Series)

LETTERING STYLE (OPTIONS)



#01



#02



#03



#04



#05



#06



#07



#08



#09



#10

CUT/SEW PREMIUM PERFORMANCE T-SHIRT



#1514 - AVENGER



#201 - RAMPAGE



#201 - CHALLENGER



#811 - THUNDER



#073 - RENEGADE DUAL



#817 - DOMINATOR



#073 - THUNDERBIRD



#201 - ORCA



#716 - VERTICAL



SUBLIMATION PERFORMANCE T-SHIRT



#073 - ESPRIT



#073 - DUAL SNIPER



#073 - TORNADO



#201 - TOP SHELF



#201 - HOWITZER





#201 - ICE SNIPER





CUT/SEW PREMIUM PERFORMANCE T-SHIRT



#199 - RENEGADE DUAL  




#199 - TORNADO  





#1035 - CRUISER  



#1035 - PLAYMAKER  



#1035 - MUSTANG  



#1035 - WOLVERINE  



#201V - OUTLAW  



#1539 - SENNA  



#2026 - STREAKER  

SUBLIMATION PERFORMANCE T-SHIRT



#1035 - WAHOO 



#1035 - SNIPER 



#1035 - ZENVO 




#1035 - ENFORCER 



#1035 - BLUE LINER 



#1035 - FORECHECKER 



STYLE #301- HORIZON

FEATURES

- Light-weight feel and superior performance
- Superb wicking capabilities
- Elastic tape on the collar to add comfort and durability
- Custom embroidery or sublimation available
- Men, women and youth sizing available

FABRIC CONTENT

-  • VaporICE T-Force Stretch (Replay Series)
-  • VaporICE Plus / VaporICE Super Plus (Replay Series)
-  • Power Flex Pique
-  • VaporICE Drip (Grinde Series)



STYLE #301LS - CLASSIC



STYLE #301 - CASPIAN



STYLE #301 - ULTRASONIC



STYLE #301 - NEMO



STYLE #301F - SURGE

CUT/SEW STANDARD PERFORMANCE POLO



#2206 - CLASSIC MODERN



#1257 - CLASSIC REVERSE EDGE



CUT/SEW PREMIUM PERFORMANCE POLO



#301 - PIONEER



#1788 - MOMENTUM



#149 - CAVALIER



#167 - RIPTIDE



#217 - COYOTE



#388 - SURGE



#859 - COMBAT



SUBLIMATION PERFORMANCE POLO



#301 - COLLEGIATE



#1081B - STREAM LINE FLOW



#301 - TEMPO



Please note, some styles are available in both cut & sew and sublimation

 = Sublimation /  = Cut & Sew

SUBLIMATION PERFORMANCE POLO



#301 - LUMINOUS



#301 - RAMBLER



#301 - PHOENIX



#301 - MAVERICK



#301 - BLAZERS



#301 - STEAMER



#301 - SPARTAN



#301 - HORIZON



#301 - MUSTANG



#301 - DEFENDER



#301 - GRIDIRON



#301 - ULTRASONIC





STYLE #1040 - DAYTONA

FEATURES

- Light-weight feel and superior performance
- Superior wicking capabilities
- Full elastic waistband with draw cord (50% nylon, 20% polyester & 30% spandex)
- Inner lining and pockets (optional)
- Custom screen printing, sublimation or embroidery available

FABRIC CONTENT



• VaporICE Everest



• VaporICE T-Force Stretch (Replay Series)



• VaporICE Plus / VaporICE Super Plus (Replay Series)



• VaporICE Vertical (Replay Series)



• VaporICE Drip (Grinde Series)



STYLE #1040B - CLASSIC



STYLE #1715 - PACER



STYLE #1645 - LINEAR



STYLE #602 - RACER



STYLE #1040 - PANTHER

CUT/SEW STANDARD PERFORMANCE SHORTS

CUT/SEW PREMIUM PERFORMANCE SHORTS



#1040 - CLASSIC



#1715 - PACER



#1040 - DAYTONA



#1040 - SQUIRE



#1845 - CHEVELLE



#1645 - LINEAR



#1040 - PANTHER



#602 - RACER



#1040 - FIERO



#1040 - BENGAL



#1040 - CAMARO



#1040 - FAST LANE



SUBLIMATION PERFORMANCE SHORTS

PERFORMANCE JACKETS

STYLE #1883 - PATRIOT



Sublimation or Embroidery Logo Available

Full Zip or 1/4 Zip



STYLE #722B - WARRIOR



STYLE #722B - STRATUS

FEATURES

- A strong, mid-weight, warm and moisture wicking jacket
- Relaxed and comfortable fit
- Full zip or 1/4 zip options plus invisible side zip pockets
- Invisible side zip pockets

FABRIC CONTENT



- Power Flex Yield Thermal Form (Replay Series)
- Power Flex Zorro Thermal Form (Grinde Series)

SOFT SHELL JACKET

STYLE #2013 - STORM PULSE

Piping



Embroidery Logos

Full Zip or 1/4 Zip



STYLE #2013 - CLASSIC

FEATURES

- 3-layer soft shell that can protect against cold wind & snow
- Durable water repellent
- Embroidery logo
- Optional invisible zip chest pocket
- Full zip plus invisible side zip pockets
- All 3 levels provide ability to keep warmth and moisture permeable
- The soft shell has a 4-way stretch that makes it comfortable during athletic activity

FABRIC CONTENT

- Everest Storm Soft Shell

STANDARD PERFORMANCE JACKETS



#722B - CLASSIC



#722B - WARRIOR



#722B - DUAL WARRIOR



PREMIUM PERFORMANCE JACKETS



#722 - STRATUS



#1833 - PATRIOT



#722B - COLONIAL



HARVEST



RAKER



RUSTLER



SOFT SHELL JACKETS



#2013 - CLASSIC



#2013 - STORM PULSE



#2087 - STORM PULSE
(w/ chest pocket)



EVEREST SURGE



FEATURES

- Eco Thermal insulation - 65% recycled polyester (Replay Series) 35% recycled polyester (Grinde Series)
- A polished, smooth finish that is lightweight yet durable
- A eco-friendly jacket that shields away the cold air and repels water
- Full zip and invisible zip hand pockets
- Embroidery team logo
- Optional embroidery player number

FABRIC CONTENT

- Everest Surge

EVEREST SURGE STRETCH



FEATURES

- Eco Thermal insulation - 65% recycled polyester (Replay Series) 35% recycled polyester (Grinde Series)
- A eco-friendly jacket that shields away the cold air and repels water
- A polished, smooth finish that is lightweight, yet durable
- Full zip and invisible zip hand pockets
- Embroidery team logo
- Optional embroidery player number

FABRIC CONTENT

GRINDE
SERIES

- Everest Surge
- Power Flex Zorro Thermal Form (Grinde Series) (Sublimated area)

EVEREST SURGE STRETCH



#2060 - CLASSIC STRETCH  



KWAWZA  



TOBO  



NOREASTER  



DUVET  

EVEREST SURGE



#2098 - CLASSIC 



STEALTH JACKET #836 / PANTS #837

JACKET & PANTS FEATURES

- Water repellent and 4-way stretch
- Full zip and invisible side zip pockets
- Fleece neck liner (optional)
- Cell phone pocket (optional)
- Adjustable velcro cuffs (optional)
- Nylon and mesh inner lining
- Elastic and draw cord waist
- Bottom side zippers - draw cord or adjustable velcro option or adjustable velcro on leg opening
- Nylon inner lined cuff and bottom pants hem

FABRIC CONTENT

-  VaporICE Everest
-  Everest Power Flex Peak

BACK SIDE



JACKET #727 - CONTOUR
PANTS #727 - CONTOUR



JACKET #2152 - KNIGHT
PANTS #1601 - CLASSIC



JACKET #1020 - DYNAMO
PANTS #1601 - CLASSIC



JACKET #502 - GLACIER
PANTS #502 - GLACIER

STANDARD PERFORMANCE TRACKSUIT



JACKET #836 - STEALTH TWO TONE
PANTS #727 - CONTOUR



BACK SIDE



JACKET #2121 - NAVIGATOR
PANTS #727 - NAVIGATOR



BACK SIDE



JACKET #2152 - KNIGHT
PANTS #1601 - CLASSIC



BACK SIDE

PREMIUM PERFORMANCE TRACKSUIT



JACKET #2231 - CLASSIC
PANTS #837 - STEALTH



BACK SIDE



JACKET #1999 - ROADRUNNER
PANTS #837 - STEALTH



BACK SIDE



JACKET #2082 - MONARCH
PANTS #727 - CONTOUR



BACK SIDE



JACKET #727 - CONTOUR
PANTS #727 - CONTOUR



BACK SIDE



JACKET #502 - GLACIER
PANTS #502 - GLACIER



BACK SIDE



JACKET #891 - TORPEDO
PANTS #892 - TORPEDO



BACK SIDE



STYLE #600 - ALPHA



STYLE #600C - ST. LOUIS

HOODIE FEATURES

- Thermal form shields the cold & wind with minimal weight & bulk
- Soft knit construction, comfortable stretch & smooth feel
- Hockey or regular laces available
- Elastic knit rib or rib cuff and hem
- Sublimation, screen and embroidery application options
- Kangaroo pocket option
- Full zip and invisible side zip pocket options

JOGGER FEATURES

- Thermal form shields the cold & wind with minimal weight & bulk
- Soft knit construction, comfortable stretch & smooth feel
- Full elastic waistband with draw cord
(50% nylon, 20% polyester & 30% spandex)
- Invisible side zip pockets
- Elastic knit rib or rib bottom cuff

FABRIC CONTENT

-  Thermal Form Replay (Replay Series)
-  Power Flex Zorro Thermal Form (Grinde Series)



STYLE #1809 - AKITA



STYLE #1809 - VICTORY



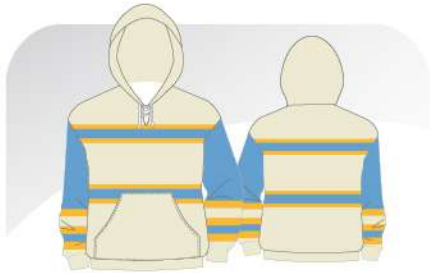
STYLE #1809 - ZEBRA

HOODIE #600 - OUTLAW



JOGGERS #1809 - GREYHOUND

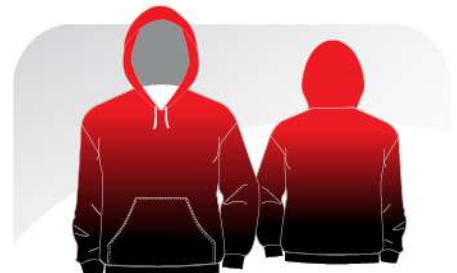
SUBLIMATION HOODIES



#600C - ST. LOUIS



#600C - STARS



#600 - STAR GAZER



#1543 - BUTLER



#600 - SENS



#600 - SPYKER



#600 - ROYALS



#600 - WOLVES



#600C - PREDATORS



#600C - FLAMES



#600C - KNOXVILLE



#600C - NORTHERN



#1543B - SUNDEVIL



#600C - VEGAS



#600C - BLAZER



SUBLIMATION HOODIES



#600C - TRI BAND



#600C - HAMILTON



#600C - SUNY



#600 - YULE



#600 - TUNDRA



#600 - WADI DOGS



#600 - EDGE



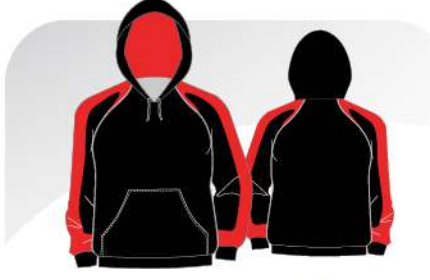
#600C - BLITZ



#600C - LIBERTY



#1543 - FINISH LINE



#1543 - FREESTYLE



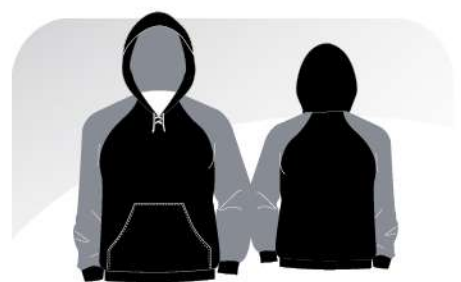
CUT/SEW STANDARD HOODIES



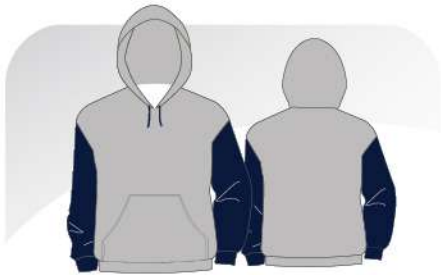
#600C - CLASSIC  



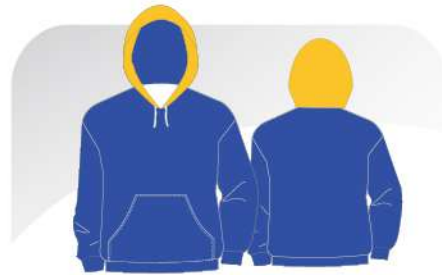
#600B - CLASSIC FULL ZIP  



#1543 - CLASSIC DUAL  



#600 - OUTLAW  

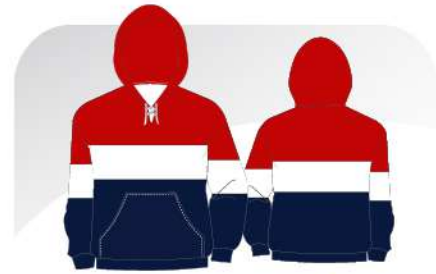


#600 - CLASSIC REVERSE  

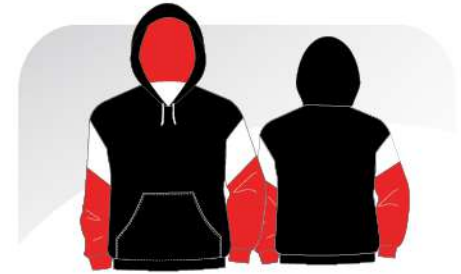
CUT/SEW PREMIUM HOODIES



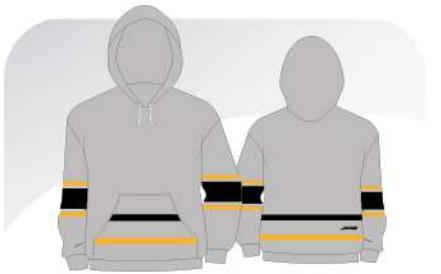
#600 - ALPHA  



#600C - SABLE  



#600 - OTTER  



#2436 - MOUNTAINEERS  



#2281 - STREAKER THERMAL FORM  



#2488 - HORNET  

SUBLIMATION JOGGERS



#1809 - VIZSLA



#1809 - SALUKI



#1809 - LINCOLN



#1809 - VICTORY



#1757 - DREVER



#1757 - CORSO



CUT/SEW STANDARD JOGGERS



#1809 - CLASSIC



CUT/SEW PREMIUM JOGGERS



#2489 - TERVUREN



#1673 - ZEBRA



#1809 - TERRIER



#1809 - BORZOI



#1809 - GREYHOUND



** Please note, some styles are available in both cut & sew and sublimation **

= Sublimation / = Cut & Sew

HATS



BEANIES

DESCRIPTION

- Custom Beanies - 100% Acrylic (with embroidery logo + jacquard embroidery) (MOQ - 20 units)



POM POM

DESCRIPTION

- Custom POM POM - 100% Acrylic (with embroidery logo + jacquard embroidery) (MOQ - 100 units)



SHADOW X PERFORMANCE HAT

DESCRIPTION

- Custom Team Hats - 100% Polyester
- Snap back
- Available in a variety of colors (MOQ - 20 units)

CLOTH FACE COVERINGS

2 LAYER CLOTH FACE COVERINGS

DESCRIPTION

- Reusable/washable
- Muslin Cotton 2 layer
- Lightweight and breathable, fine and smooth in texture
- Colors Available: Black and White

SIZE

S/M	7.75" x 5.25"
L/XL	9.5" x 6"



SUBLIMATED CUSTOM CLOTH FACE COVERINGS

DESCRIPTION

- Unlimited styles and graphics
- Reusable/washable
- Filter insert pocket
- VaporICE YOLO for outer layer
- VaporICE Air Mesh for middle layer
- Muslin Cotton for inner layer

SIZE

S/M	7.75" x 5.25"
L/XL	9.5" x 6"



SUBLIMATED CUSTOM GAITERS

DESCRIPTION

- Reusable/washable
- VaporICE Super Plus (Replay Series)

SIZE

Adult	9.25" x 16"
Youth	8" x 12"



SHIPPING

JOG ships globally using DHL or UPS.
The transit time for delivery is 2-3 days for most countries.

CREDIT TERMS

Net 30 for existing (credit approved) customers. Orders will not be processed for any accounts of 60 days past due. A 50% down payment is required on orders from customers who have not been given NET 30 terms and the balance is due on delivery.

DESIGN APPROVALS

Digital mockups and order forms are provided for approval before production for every order. Please ensure all details are thoroughly correct before approving mockups / orders. Please submit high resolution vector art in either .ai or .eps formats. If you are unable to supply your artwork in vector format our designers will recreate and charges will be applied.

DAMAGES, RETURNS AND CREDITS

Items that were shipped either incorrectly, damaged, or defective are subject to returns. Each case will be reviewed by your sales representative.

LAUNDERING

Hand wash or machine wash at "gentle" setting with like colors. Use cold water, mild soap, and rinse thoroughly. Air dry or tumble dry low. Do not dry clean. Do not iron over printed garments. Do not bleach.

RIGHT TO MARKET & PROMOTE

JOG reserves the right to use all products for marketing purposes unless otherwise specified by the customer.

LICENSING

JOG ensures all decorated logos will have requisite licensing / royalty approval prior to producing an order.



JOIN OUR GAME

CUSTOM STYLE PERFORMANCE

JOG

JOIN OUR GAME

NORTH AMERICA

JOG ATHLETICS LLC
501 SILVERSIDE RD.
WILMINGTON, DE 19809
PHONE: (302)538-9444

ASIA

JOG SPORTS CO., LTD.
99 SOI PAYASURENT 35
BANGKOK, THAILAND 10510



WWW.JOGSPORTSWEAR.COM



INFO@JOGSPORTS.COM