



**MATMAN**

**2024-2025**

**MATMAN USA SPORTS CATALOG**

WRESTLING • BASEBALL/SOFTBALL • SOCCER • VOLLEYBALL • GOLF • BOWLING • WARM-UPS AND MORE

# TABLE OF CONTENTS

<b>HOW TO ORDER</b>	<b>3</b>	The Tournament Series Singlets	40	Available Stock Colors & Material Options	88
<b>CLOSE OUT ITEMS</b>	<b>4</b>	The Tournament State Series Singlets	45	<b>WRESTLING APPAREL</b>	<b>89</b>
The Mesh Reversible Men's Singlet	5	The Tournament U.S.A. Series Singlets	48	Singlet Cut Options	90
The Sydney Men's Singlets	6	The Tournament Reversible Series Singlets	50	Singlet Leg Cuff Option	91
The Premium Men's Singlets	7	Sizing Charts for Tournament Series Singlets	51	Singlet Side Panel Option	92
The Rio Men's Singlets	8	The Compression Shirts	52	Sizing Charts for Custom Singlets	93
The Athens Men's Singlets	9	The Fight Shorts	53	Compression Shirt Options	94
The Beijing Men's Singlets	10	The Compression Shorts	54	Sizing Charts for Custom Shirts	95
The London Men's Singlets	11	Sizing Charts for Doublets	55	Shorts Options	96
The Premium Women's Singlets	12	The Tournament Series Doublets	56	Sizing Charts for Custom Shorts	97
The Athens Women's Singlets	13	The Tournament U.S.A. Series Doublets	58	<b>BASEBALL/SOFTBALL JERSEYS</b>	<b>98</b>
Sizing Charts for Stock Singlets	14	The Tournament Drip Series Shirts	64	Jersey Style Options	99
The Small Sports Gear Bag	15	Sizing Charts for Tournament Doublets	65	Sizing Charts for Custom BB/SB Jerseys	100
1 Inch Striping Tape	16	The Edge Men's Singlets	66	Sleeveless Softball Style Option	101
2 Inch Striping Tape	17	The Edge Women's Singlets	67	Sizing Chart for Custom Sleeveless SB Jerseys	101
The Double Knit Singlets (Select Colors)	18	The Edge Fight Shorts	68	<b>SOCCER JERSEYS</b>	<b>102</b>
Sizing Charts for Double Knit Singlets	19	Sizing Charts for Edge Series	69	Jersey Style Options	103
Two Color Compression Shirts	20	The Original Headgear	70	Sizing Chart for Custom Soccer Jerseys	104
Two Color Fight Shorts	21	The Halo Headgear	71	<b>SOCCER SHORTS</b>	<b>105</b>
Two Color Compression Shorts	22	The Triforce Headgear	72	Shorts Style Option	106
Sizing Charts for Doublets	23	The Dynasty Youth & Adult Headgear	73	Sizing Chart for Custom Soccer Shorts	107
<b>STOCK</b>	<b>24</b>	The Medalist Headgear	74	<b>VOLLEYBALL JERSEYS</b>	<b>108</b>
The Low Cut Reversible Men's Singlet	25	The Renegade Youth Headgear	75	Jersey Style Options	109
The Hi Cut Reversible Men's Singlet	26	The Briefs	76	Sizing Chart for Custom Volleyball Jerseys	109
The Standard Reversible Men's Singlet	27	Sizing Chart for Briefs	76	<b>CUSTOM ACTIVEWEAR</b>	<b>110</b>
The Goodwill Men's Singlets	28	The Youth & Adult Hair Caps	77	Windbreaker & Cage Jacket Descriptions	111
The Timeless Men's Singlets	29	The Large Sports Gear Bag	78	Sizing Charts for Custom Jackets	112
The State Men's Singlets	30	The Ankle Bands	79	Quarter Zip & Polo Examples	113
The Chest Sweep Men's Singlets	31	The Reversible Knee Pad	80	Quarter Zip & Polo Descriptions	114
The Illinois Men's Singlets	32	Sizing Chart for Reversible Knee Pad	80	Sizing Charts for Custom Quarter Zips & Polos	115
The Eclipse Men's Singlets	33	The Youth & Adult Knee Sleeves	81	Hoodie Example & Description	116
The Timeless Women's Singlets	34	Sizing Chart for Knee Sleeves	81	Sizing Chart for Custom Hoodie	116
The Reversible Women's Singlet	35	The Air Knee Pad	82		
The Delta Women's Singlet	36	Sizing Chart for Air Knee Pad	82		
The 1" Side Panel Women's Singlet	36	<b>CUSTOM</b>	<b>83</b>		
Sizing Charts for Stock Singlets	37	Sublimation vs Heat Transfer	84		
The Double Knit Singlets	38	How To: Pick a Design	85		
Sizing Charts for Double Knit Singlets	39	How To: Pick an Item	86		
		How To: Start Your Order	87		

## STOCK ITEMS

### HOW TO ORDER

- Submit P.O. to [Orders@MatmanUSA.com](mailto:Orders@MatmanUSA.com)
- Include item #s, sizes, quantities, & shipping address
- Some stock items are customizable. Call or email for information
- Submit questions to [Orders@MatmanUSA.com](mailto:Orders@MatmanUSA.com)



## CUSTOM ITEMS

### HOW TO ORDER

#### SUBLIMATION

- Submit P.O. to [Custom@MatmanUSA.com](mailto:Custom@MatmanUSA.com)
- Include vector art, item #s, sizes, quantities, & shipping address
- 6 piece minimum (Call for Exceptions)
- Redrawing services are available for additional cost
- Art proof emailed within 2 business days
- Custom colors available upon request (May increase order production time)
- Submit questions to [Custom@MatmanUSA.com](mailto:Custom@MatmanUSA.com)

#### HEAT TRANSFER

- Submit P.O. to [Custom@MatmanUSA.com](mailto:Custom@MatmanUSA.com)
- Include vector art, item #s, sizes, quantities, & shipping address
- 6 piece minimum (Call for Exceptions)
- Low cost set up fee
- Redrawing services are available for additional cost
- Art proof emailed within 2 business days
- Submit questions to [Custom@MatmanUSA.com](mailto:Custom@MatmanUSA.com)

### PRICING INFO

All prices are subject to change. Check with your local dealer for current pricing.

# CLOSE OUT

- No Returns -
- Limited Inventory Available -
- No Additional Discounts Apply -



# CLOSE OUT

## #14 The Mesh Reversible Men's Singlet



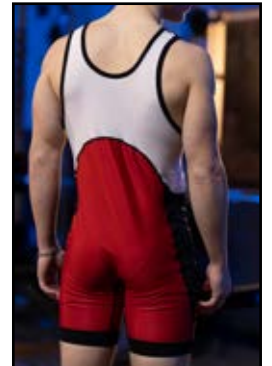
Side

Front

Back



- Men's standard cut
- 2 singlets in 1, royal outside and red inside
- Double sublimated single layered body
- White upper back mesh insert
- Black lycra side panel insert
- Black neck & arm trim
- Black rib knit leg trim
- Superior moisture management material
- Leg tag label
- 8.8 oz/yd<sup>2</sup>
- 82% Micropoly/ 18% Spandex
- Made in the U.S.A.



# CLOSE OUT

## #18F The Sydney Men's Singlet

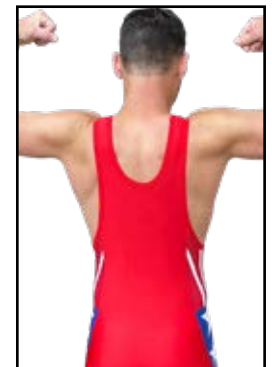


Royal

Red



- Men's standard cut
- 2 available colors
- Solid colored body
- Sublimated side panel inserts
- Moisture wicking material
- Gripper elastic leg cuff
- Tagless label
- 4 way stretch lycra body
- 82% Nylon/ 18% Spandex: Body
- 82% Micropoly/ 18% Spandex: Side panel insert
- Made in the U.S.A.



# CLOSE OUT

## #95 The Premium Men's Singlet



Black

White

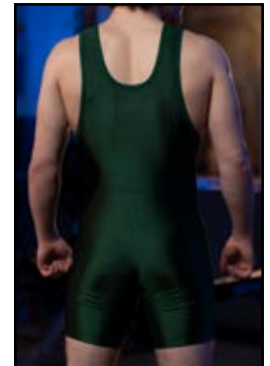
Dark Green

Royal

Navy

Red

- Men's standard cut
- 6 available colors
- Solid colored body with matching neck & arm trim
- Moisture wicking material
- Gripper elastic leg cuff
- Tagless label
- 4 way stretch lycra material
- Solid shiny nylon spandex
- 82% Nylon/ 18% Spandex
- 9.6 oz/yd<sup>2</sup> weight material
- Made in the U.S.A.



# CLOSE OUT

## #202 The Rio Men's Singlet

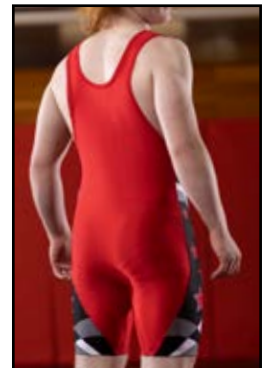


Royal

Red



- Men's standard cut
- 2 available colors
- Solid colored body
- Sublimated side panel inserts
- Moisture wicking material
- Gripper elastic leg cuff
- Tagless label
- 4 way stretch lycra body
- 82% Nylon/ 18% Spandex: Body
- 82% Micropoly/ 18% Spandex: Side panel insert
- Made in the U.S.A.



# CLOSE OUT

## #204 The Athens Men's Singlet

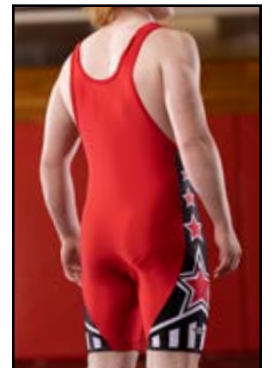


Royal

Red



- Men's standard cut
- 2 available colors
- Solid colored body
- Sublimated side panel inserts
- Moisture wicking material
- Gripper elastic leg cuff
- Tagless label
- 4 way stretch lycra body
- 82% Nylon/ 18% Spandex: Body
- 82% Micropoly/ 18% Spandex: Side panel insert
- Made in the U.S.A.





# CLOSE OUT

## #208 The Beijing Men's Singlet



Royal



Red

- Men's standard cut
- 2 available colors
- Solid colored body
- Sublimated side panel inserts
- Moisture wicking material
- Gripper elastic leg cuff
- Tagless label
- 4 way stretch lycra body
- 82% Nylon/ 18% Spandex: Body
- 82% Micropoly/ 18% Spandex: Side panel insert
- Made in the U.S.A.

# CLOSE OUT

## #2012 The London Men's Singlet



Royal



Red

- Men's standard cut
- 2 available colors
- Solid colored body
- Sublimated side panel inserts
- Moisture wicking material
- Gripper elastic leg cuff
- Tagless label
- 4 way stretch lycra body
- 82% Nylon/ 18% Spandex: Body
- 82% Micropoly/ 18% Spandex: Side panel insert
- Made in the U.S.A.

# CLOSE OUT

## #96 The Premium Women's Singlet



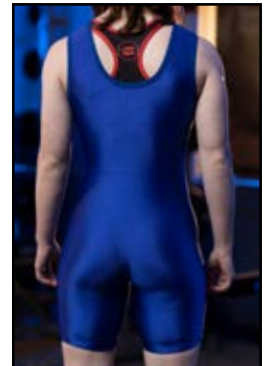
Dark Green

Royal

Pink



- Women's cut
- 3 available colors
- Solid colored body with matching neck & arm trim
- Moisture wicking material
- Gripper elastic leg cuff
- Tagless label
- 4 way stretch lycra material
- Solid shiny nylon spandex
- 82% Nylon/ 18% Spandex
- 9.6 oz/yd<sup>2</sup> weight material
- Made in the U.S.A.



# CLOSE OUT

## #204W The Athens Women's Singlet

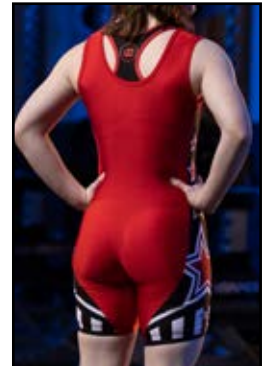


Royal

Red



- Women's cut
- 2 available colors
- Solid colored body
- Sublimated side panel inserts
- Moisture wicking material
- Gripper elastic leg cuff
- Tagless label
- 4 way stretch lycra body
- 82% Nylon/ 18% Spandex: Body
- 82% Micropoly/ 18% Spandex: Side panel insert
- Made in the U.S.A.





# CLOSE OUT

**MALE**



**FEMALE**



## SIZING CHART

### MEN'S SINGLET

SIZE	WEIGHT (LBS.)	INSEAM
6XS	<30	4.25"
5XS	30-40	5"
4XS	40-55	5.5"
3XS	55-75	5.5"
2XS	75-95	5.75"
XS	95-115	7"
S	115-135	7"
M	135-160	7"
L	160-190	7"
XL	190-220	8.5"
2XL	220-250	8.75"
3XL	250-275	8.75"

## SIZING CHART

### WOMEN'S SINGLET

SIZE	WT (LBS.)	INSEAM
5XS	30-40	4"
4XS	40-55	5"
3XS	55-70	5"
2XS	70-85	5"
XS	85-100	6"
S	100-115	6"
M	115-135	7"
L	135-155	7"
XL	155-175	7"
2XL	175-195	7"
3XL	195-215	7"



# CLOSE OUT

## #B22 The Small Sports Gear Bag



PADDED BACK  
FOR COMFORT



SPACIOUS INTERNAL POCKET



- Drawstring closure
- Mesh side panels
- Spacious pockets
- Outer zipper pocket
- Padded back
- Adjustable straps
- Light weight material
- Water resistant
- Made in China



# CLOSE OUT

## #45 The 1 Inch Striping Tape



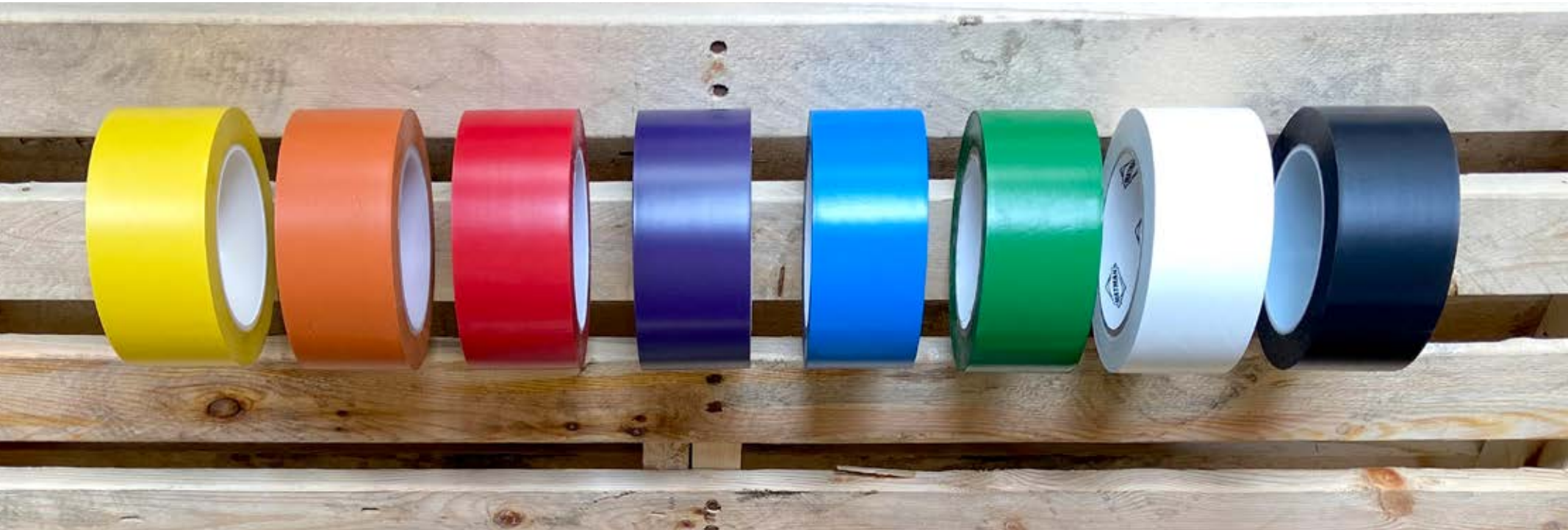
Black, White (Sold Out), Kelly Green, Navy, Royal, Purple, Red, Orange, Yellow

- 8 available colors (Sold Out: White)
- 1" striping tape
- 108' in length
- 6 mil thick
- Vinyl
- Durable
- Vibrant colors
- Made in Taiwan



# CLOSE OUT

## #45 The 2 Inch Striping Tape



Yellow, Orange, Red, Purple, Royal, Kelly Green, White, Black

- 8 available colors
- 2" striping tape
- 108' in length
- 6 mil thick
- Vinyl
- Durable
- Vibrant colors
- Made in Taiwan



# CLOSE OUT

## #81 & #83 The Double Knit Men's Singlet



Kelly Green/White

Purple/White

Maroon/White

- Men's standard cut
- 3 available close out colors
- Solid colored body with contrasting neck and arm trim
- Double knit nylon body
- Moisture wicking material
- Striped rib knit leg trim
- Tagless label
- Heavy weight material
- 100% stretch nylon
- Made in the U.S.A.



# CLOSE OUT

## #81 YOUTH



## #83 ADULT



### SIZING CHART

#### BOY'S DOUBLE KNIT SINGLET

SIZE	WT (LBS.)	INSEAM
XS	45-60	6"
S	60-75	6.5"
M	75-85	6.5"
L	85-95	6.5"

### SIZING CHART

#### MEN'S DOUBLE KNIT SINGLET

SIZE	WT (LBS.)	INSEAM
XS	95-115	7.75"
S	115-135	7.75"
M	135-160	7.75"
L	160-190	7.75"
XL	190-220	7.75"
2XL	220-250	7.75"
3XL	250-275	8.25"



# CLOSE OUT

## #CSS100-2 The Two Color Compression Shirt



Black/White



Dark Grey/Black



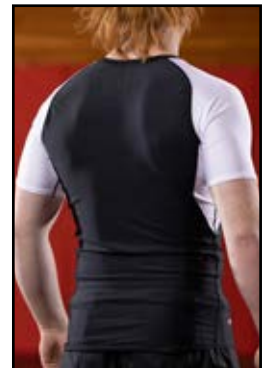
Royal/Black



Red/Black



- Unisex athletic cut
- 4 available color combinations
- NFHS compliant
- 3" tail in back
- Moisture wicking material
- Flatlock stitching
- Raglan Sleeves
- Tagless label
- 4 way stretch lycra material
- 82% Nylon/ 18% Spandex
- 5.9 oz/yd<sup>2</sup>
- Made in the U.S.A.



# CLOSE OUT

## #SFS100-2 The Two Color Fight Shorts



Black/White



Dark Grey/Black



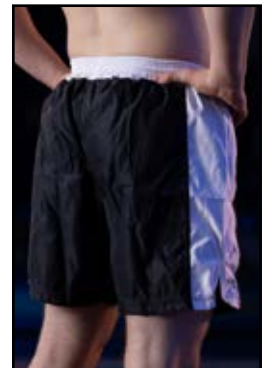
Royal/Black



Red/Black



- Unisex athletic cut
- 4 available color combinations
- Solid colored body
- Solid colored side inserts
- Black 4 way stretch lycra crotch insert
- NFHS compliant
- Inside drawstring waistband
- Reinforced side slit
- Poly microfiber body
- Elastic waistband
- 6.44 oz/yd<sup>2</sup>
- Made in the U.S.A.



# CLOSE OUT

## #5-2 The Two Color Compression Shorts



Black/White



Dark Grey/Black



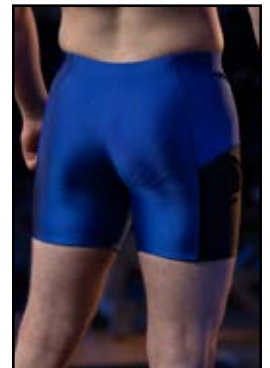
Royal/Black



Red/Black

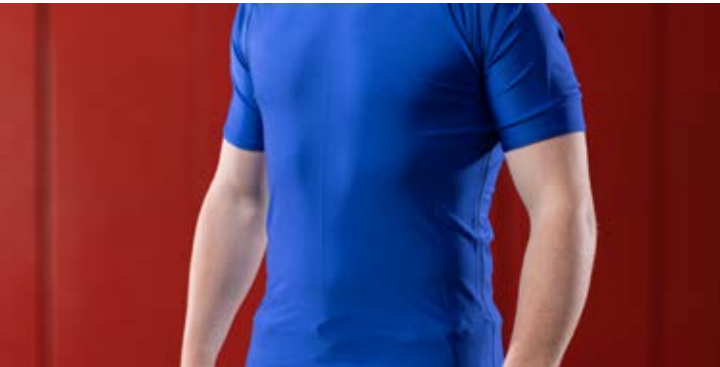


- Unisex athletic cut
- 4 available color combinations
- Solid colored body with colored side inserts
- Matching colored flatlock stitching
- Moisture wicking material
- Elastic waistband
- Tagless label
- 4 way stretch lycra material
- Compression fit
- 82% Nylon/ 18% Spandex
- 5.9 oz/yd<sup>2</sup>
- Made in the U.S.A.



# CLOSE OUT

## COMPRESSION TOPS



## FIGHT SHORTS



## COMPRESSION SHORTS



### SIZEING CHART

#### COMPRESSION SHIRT

SIZE	WEIGHT (LBS.)
6XS	<30
5XS	30-40
4XS	40-55
3XS	55-75
2XS	75-95
XS	95-115
S	115-135
M	135-160
L	160-190
XL	190-220
2XL	220-250
3XL	250-275

### SIZEING CHART

#### PMF FIGHT SHORTS

SIZE	WEIGHT (LBS.)	WAIST	INSEAM
6XS	<30	18-20"	3.5"
5XS	30-40	19-21"	4"
4XS	40-55	20-22"	4"
3XS	55-75	21-23"	5"
2XS	75-95	22-24"	5"
XS	95-115	23-25"	5.25"
S	115-135	24-27"	5.25"
M	135-160	28-32"	6.5"
L	160-190	31-34"	6.5"
XL	190-220	34-36"	7"
2XL	220-250	36-40"	7"
3XL	250-275	40-44"	7.75"

### SIZEING CHART

#### COMPRESSION SHORTS

SIZE	WEIGHT (LBS.)	INSEAM
6XS	<30	3.75"
5XS	30-40	4.5"
4XS	40-55	5"
3XS	55-75	5.5"
2XS	75-95	5.5"
XS	95-115	6.75"
S	115-135	6.75"
M	135-160	7"
L	160-190	7"
XL	190-220	7.75"
2XL	220-250	8.75"
3XL	250-275	8.75"

# STOCK



## #2 The Low Cut Reversible Men's Singlet

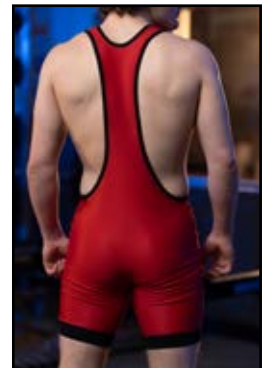


Front

Back



- Men's low cut
- 2 singlets in 1, royal outside and red inside
- Double sublimated single layered body
- Superior moisture management material
- Black neck & arm trim
- Black rib knit leg trim
- Leg tag label
- 82% Micropoly/ 18% Spandex
- 8.8 oz/yd<sup>2</sup>
- Made in the U.S.A.



# STOCK

## #6 The Hi Cut Reversible Men's Singlet



- Men's standard cut
- 2 singlets in 1, royal outside and red inside
- Double sublimated single layered body
- Black lycra side panel insert
- Black neck & arm trim
- Black rib knit leg trim
- Superior moisture management material
- Leg tag label
- 82% Micropoly/ 18% Spandex
- 8.8 oz/yd<sup>2</sup>
- Made in the U.S.A.



# STOCK

## #8 The Standard Reversible Men's Singlet

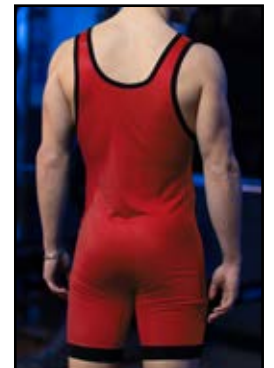


Front

Back



- Men's standard cut
- 2 singlets in 1, royal outside and red inside
- Double sublimated single layered body
- Black neck & arm trim
- Black rib knit leg trim
- Superior moisture management material
- Leg tag label
- 82% Micropoly/ 18% Spandex
- 8.8 oz/yd<sup>2</sup>
- Made in the U.S.A.



# STOCK

## #9 The Goodwill Men's Singlet



Black: Front



Black: Back



Royal: Front



Royal: Back



Red: Front



Red: Back

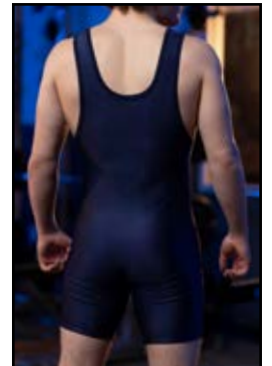
- Men's low cut
- 3 available colors
- Solid colored body with matching neck & arm trim
- Moisture wicking material
- Gripper elastic leg cuff
- Tagless label
- 4 way stretch lycra material
- Solid shiny nylon spandex
- 82% Nylon/ 18% Spandex
- 5.9 oz/yd<sup>2</sup> weight material
- Made in the U.S.A.

# STOCK

## #85 The Timeless Men's Singlet



- Men's standard cut
- 7 available colors
- Solid color body with matching neck & arm trim
- Moisture wicking material
- Gripper elastic leg cuff
- Tagless label
- 4 way stretch lycra material
- Solid shiny nylon spandex
- 82% Nylon/ 18% Spandex
- 5.9 oz/yd<sup>2</sup> weight material
- Made in the U.S.A.



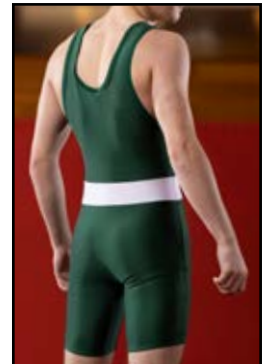


# STOCK

## #8525 The State Men's Singlet



- Men's standard cut (Women's cut available upon request #8625)
- 6 available colors
- Solid colored body with white insert around the torso
- Matching color neck & arm trim
- Moisture wicking material
- Gripper elastic leg cuff
- Tagless label
- 4 way stretch lycra material
- Solid shiny nylon spandex
- 82% Nylon/ 18% Spandex
- 5.9 oz/yd<sup>2</sup> weight material
- Made in the U.S.A.



# STOCK

## #8538 The Chest Sweep Men's Singlet



Black/Kelly Green



Black/Royal



Black/Purple



Black/Red

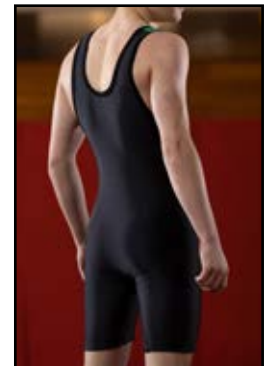


Black/Orange



Black/Gold

- Men's standard cut (Women's cut available upon request #8638)
- 6 available color combinations
- Solid black body with colored insert that sweeps across the body from top right to bottom left
- Black neck & arm trim
- Moisture wicking material
- Gripper elastic leg cuff
- Tagless label
- 4 way stretch lycra material
- Solid shiny nylon spandex
- 82% Nylon/ 18% Spandex
- 5.9 oz/yd<sup>2</sup> weight material
- Made in the U.S.A.



# STOCK

## #8552 The Illinois Men's Singlet



Black/Kelly Green



Black/Royal



Black/Purple



Black/Red



Black/Orange

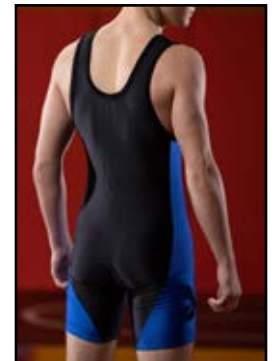


Black/Gold



Black/Vegas Gold

- Men's cut (Women's cut available upon request #8652)
- 7 available color combinations
- Solid black body with colored side panel inserts that flare at the leg
- Black neck & arm trim
- Moisture wicking material
- Gripper elastic leg cuff
- Tagless label
- 4 way stretch lycra material
- Solid shiny nylon spandex
- 82% Nylon/ 18% Spandex
- 5.9 oz/yd<sup>2</sup> weight material
- Made in the U.S.A.

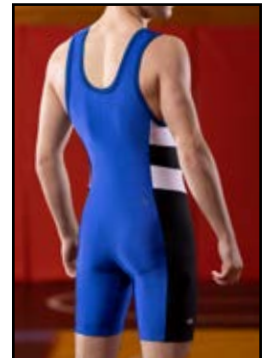


# STOCK

## #8564 The Eclipse Men's Singlet



- Men's cut (Women's cut available upon request #8664)
- 6 available color combinations
- Solid colored body with striped multi-colored side panel inserts
- Black neck & arm trim
- Moisture wicking material
- Gripper elastic leg cuff
- Tagless label
- 4 way stretch lycra material
- Solid shiny nylon spandex
- 82% Nylon/ 18% Spandex
- 5.9 oz/yd<sup>2</sup> weight material
- Made in the U.S.A.

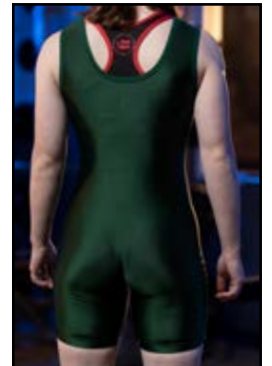


# STOCK

## #86 The Timeless Women's Singlet



- Women's cut
- 7 available colors
- Solid colored body with matching neck & arm trim
- Moisture wicking material
- Gripper elastic leg cuff
- Tagless label
- 4 way stretch lycra material
- Solid shiny nylon spandex
- 82% Nylon/ 18% Spandex
- 5.9 oz/yd<sup>2</sup> weight material
- Made in the U.S.A.





# STOCK

## #88 The Reversible Women's Singlet

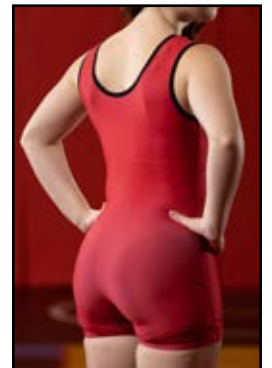


Front

Back



- Women's cut
- 2 singlets in 1, royal outside and red inside
- Double sublimated single layered body
- Superior moisture management material
- Black neck & arm trim
- Black rib knit leg trim
- Leg tag label
- 82% Micropoly/ 18% Spandex
- 8.8 oz/yd<sup>2</sup>
- Made in the U.S.A.



# STOCK

## #8604 The Delta & #8651 The 1" Pink Side Panel Women's Singlet



#8604: Black/Pink



#8651: Black/Pink



- Women's cut
- Solid black body with pink inserts
- Moisture wicking material
- Gripper elastic leg cuff
- Tagless label
- 4 way stretch lycra material
- Solid shiny nylon spandex
- 82% Nylon/ 18% Spandex
- 5.9 oz/yd<sup>2</sup> weight material
- Made in the U.S.A.

# STOCK

**MALE**



**FEMALE**



## MALE SIZING CHART

MEN'S SINGLET		
SIZE	WEIGHT (LBS.)	INSEAM
5XS	30-40	5"
4XS	40-55	5.5"
3XS	55-75	5.5"
2XS	75-95	5.75"
XS	95-115	7"
S	115-135	7"
M	135-160	7"
L	160-190	7"
XL	190-220	8.5"
2XL	220-250	8.75"
3XL	250-275	8.75"

## FEMALE SIZING CHART

WOMEN'S SINGLET		
SIZE	WT (LBS.)	INSEAM
5XS	30-40	4"
4XS	40-55	5"
3XS	55-70	5"
2XS	70-85	5"
XS	85-100	6"
S	100-115	6"
M	115-135	7"
L	135-155	7"
XL	155-175	7"
2XL	175-195	7"
3XL	195-215	7"

# STOCK

## #81 & #83 The Double Knit Men's Singlet



Black/Gold

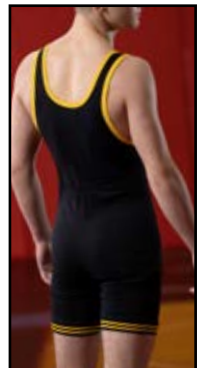
Black/White

Navy/White

Royal/White

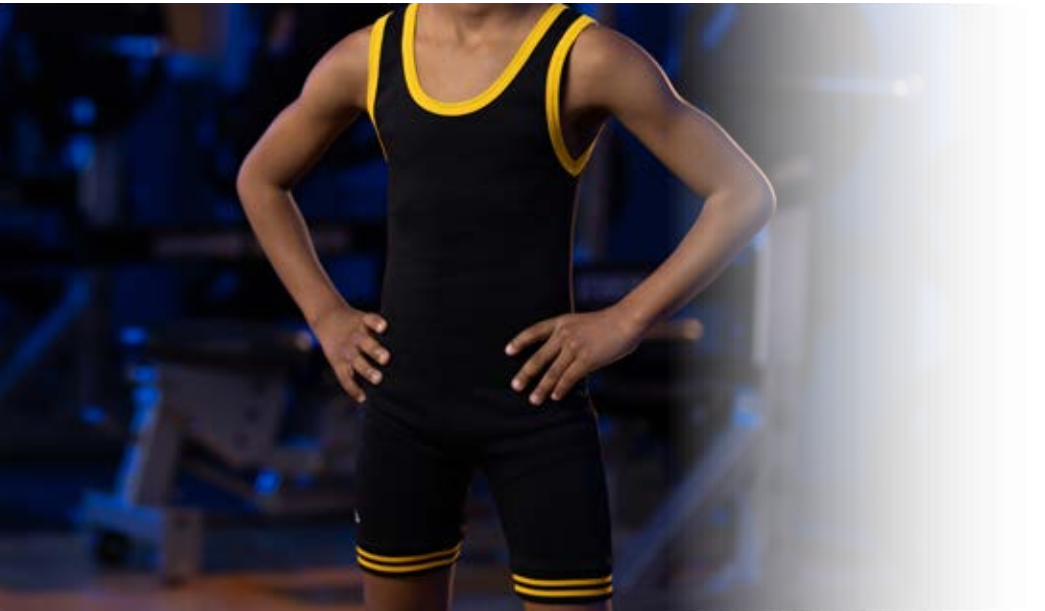
Red/White

- Men's standard cut
- 5 available colors
- Solid colored body with contrasting neck & arm trim
- Double knit nylon body
- Moisture wicking material
- Striped rib knit leg trim
- Tagless label
- Heavy weight material
- 100% stretch nylon
- Made in the U.S.A.



# STOCK

## #81 YOUTH



## #83 ADULT



### SIZING CHART

#### BOY'S DOUBLE KNIT SINGLET

SIZE	WT (LBS.)	INSEAM
XS	45-60	6"
S	60-75	6.5"
M	75-85	6.5"
L	85-95	6.5"

### SIZING CHART

#### MEN'S DOUBLE KNIT SINGLET

SIZE	WT (LBS.)	INSEAM
XS	95-115	7.75"
S	115-135	7.75"
M	135-160	7.75"
L	160-190	7.75"
XL	190-220	7.75"
2XL	220-250	7.75"
3XL	250-275	8.25"



# STOCK

## The Tournament Series Singlets



#502-M: The Splatter: Men's: Black, Blue, Red



#504-M: The Retro: Men's: Black, Blue, Red



#502-W: The Splatter: Women's: Black, Blue, Red



#504-W: The Retro: Women's: Black, Blue, Red

- Standard cut (Men's & Women's)
- 100% full vibrant colored sublimation
- Dynamic designs
- Superior moisture management material
- Tagless label
- Contrasting neck & arm trim

- Easily converted to a custom team order
- 82% Micropoly/ 18% Spandex
- 8.8 oz/yc<sup>2</sup> weight material
- Gripper leg elastic
- Made in the U.S.A.

# STOCK

## The Tournament Series Singlets



#503-M: The Breakdown: Men's: Black, Blue, Red



#523-M: The Kracken: Men's: Black, Blue, Red



#503-W: The Breakdown: Women's: Black, Blue, Red



#523-W: The Kracken: Women's: Black, Blue, Red

- Standard cut (Men's & Women's)
- 100% full vibrant colored sublimation
- Dynamic designs
- Superior moisture management material
- Tagless label
- Contrasting neck & arm trim

- Easily converted to a custom team order
- 82% Micropoly/ 18% Spandex
- 8.8 oz/yd<sup>2</sup> weight material
- Gripper leg elastic
- Made in the U.S.A.



# STOCK

## The Tournament Series Singlets



#500-M: The Divergent: Men's: Black, Blue, Red



#501-M: The Trojan: Men's: Black, Blue, Red



#500-W: The Divergent: Women's: Black, Blue, Red



#501-W: The Trojan: Women's: Black, Blue, Red

- Standard cut (Men's & Women's)
- 100% full vibrant colored sublimation
- Dynamic designs
- Superior moisture management material
- Tagless label
- Contrasting neck & arm trim
- Easily converted to a custom team order
- 82% Micropoly/ 18% Spandex
- 8.8 oz/yd<sup>2</sup> weight material
- Gripper leg elastic
- Made in the U.S.A.

# STOCK

## The Tournament Series Singlets



#519-M: The Tilt: Men's: Black, Blue, Red



#513-M: The Valhalla: Men's: Black, Blue, Red



#519-W: The Tilt: Women's: Black, Blue, Red



#513-W: The Valhalla: Women's: Black, Blue, Red

- Standard cut (Men's & Women's)
- 100% full vibrant colored sublimation
- Dynamic designs
- Superior moisture management material
- Tagless label
- Contrasting neck & arm trim
- Easily converted to a custom team order
- 82% Micropoly/ 18% Spandex
- 8.8 oz/yd<sup>2</sup> weight material
- Gripper leg elastic
- Made in the U.S.A.



# STOCK

## The Tournament Series Singlets



#524-M: The Awareness: Men's



#524-W: The Awareness: Women's



#21: The Tokyo: Men's



#21-W: The Tokyo: Women's



#522-M: The Blossoms: Men's



#522-W: The Blossoms: Women's



#525-W: The Rosie: Women's



#526-W: The Clueless: Women's

- Standard cut (Men's & Women's)
- 100% full vibrant colored sublimation
- Dynamic designs
- Superior moisture management material
- Tagless label
- Contrasting neck & arm trim

- Easily converted to a custom team order
- 2" compression cuff (The Clueless only, no gripper elastic)
- 82% Micropoly/ 18% Spandex
- 8.8 oz/yd<sup>2</sup> weight material
- Gripper leg elastic
- Made in the U.S.A.



# STOCK

## The Tournament State Series Singlets



#506-M: The California State: Men's



#506-W: The California State: Women's



#509-M: The Florida State: Men's



#509-W: The Florida State: Women's



#511-M: The Illinois State: Men's



#511-W: The Illinois State: Women's



#521-M: The New Jersey State: Men's



#521-W: The New Jersey State: Women's

- Standard cut (Men's & Women's)
- 100% full vibrant colored sublimation
- Dynamic designs
- Superior moisture management material
- Tagless label
- Contrasting neck & arm trim
- Easily converted to a custom team order
- 2" compression cuff
- 82% Micropoly/ 18% Spandex
- 8.8 oz/yd<sup>2</sup> weight material
- Made in the U.S.A.

# STOCK

## The Tournament State Series Singlets



#505-M: The New York State: Men's



#505-W: The New York State: Women's



#508-M: The Ohio State: Men's



#508-W: The Ohio State: Women's



#512-M: The Pennsylvania State: Men's



#512-W: The Pennsylvania State: Women's



#510-M: The Texas State: Men's



#510-W: The Texas State: Women's

- Standard cut (Men's & Women's)
- 100% full vibrant colored sublimation
- Dynamic designs
- Superior moisture management material
- Tagless label
- Contrasting neck & arm trim

- Easily converted to a custom team order
- 2" compression cuff
- 82% Micropoly/ 18% Spandex
- 8.8 oz/yd<sup>2</sup> weight material
- Made in the U.S.A.

# STOCK

## The Tournament State Series Singlets



#507-M: The Washington State: Men's

#507-W: The Washington State: Women's

- Standard cut (Men's & Women's)
- 100% full vibrant colored sublimation
- Dynamic designs
- Superior moisture management material
- Tagless label
- Contrasting neck & arm trim

- Easily converted to a custom team order
- 2" compression cuff
- 82% Micropoly/ 18% Spandex
- 8.8 oz/yd<sup>2</sup> weight material
- Made in the U.S.A.



# STOCK

## The Tournament U.S.A. Series Singlets



#515-M: The U.S.A. Glory: Men's



#515-W: The U.S.A. Glory: Women's



#514-M: The U.S.A. Patriot: Men's



#514-W: The U.S.A. Patriot: Women's



#520-M: The U.S.A. Pledge: Men's



#520-W: The U.S.A. Pledge: Women's



#516-M: The U.S.A. Stars: Men's



#516-W: The U.S.A. Stars: Women's

- Standard cut (Men's & Women's)
- 100% full vibrant colored sublimation
- Dynamic designs
- Superior moisture management material
- Tagless label
- Contrasting neck & arm trim

- 2" compression cuff (The Stars only, no gripper elastic)
- 82% Micropoly/ 18% Spandex
- 8.8 oz/yd<sup>2</sup> weight material
- Gripper leg elastic
- Made in the U.S.A.



# STOCK

## The Tournament U.S.A. Series Singlets



#517-M: The U.S.A. Stripes: Men's



#517-W: The U.S.A. Stripes: Women's



#518-M: The U.S.A. Victor: Men's



#518-W: The U.S.A. Victor: Women's

- Standard cut (Men's & Women's)
- 100% full vibrant colored sublimation
- Dynamic designs
- Superior moisture management material
- Tagless label
- Contrasting neck & arm trim

- 2" compression cuff (The Victor only, no gripper elastic)
- 82% Micropoly/ 18% Spandex
- 8.8 oz/yd<sup>2</sup> weight material
- Gripper leg elastic
- Made in the U.S.A.

# STOCK

## The Tournament Series Reversible Singlets



#503-MREV: The Breakdown Reversible: Men's: Red/Royal



#502-MREV: The Splatter Reversible: Men's: Red/Royal



#503-WREV: The Breakdown Reversible: Women's: Red/Royal



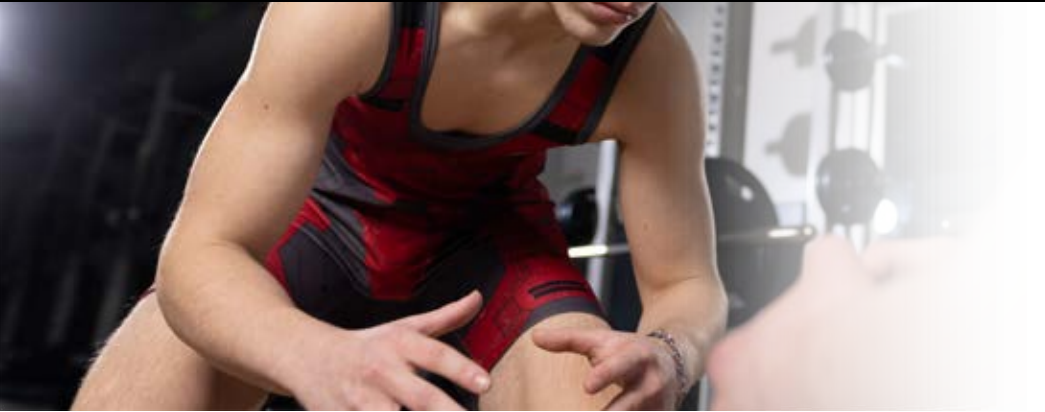
#502-WREV: The Splatter Reversible: Women's: Red/Royal

- Standard cut (Men's & Women's)
- 2 singlets in 1, royal outside and red inside
- Double sublimated single layered body
- 100% full vibrant colored sublimation
- Dynamic designs
- Superior moisture management material
- Black neck & arm trim

- Black rib knit leg trim
- Leg tag label
- 82% Micropoly/ 18% Spandex
- 8.8 oz/yd<sup>2</sup>
- Made in the U.S.A.

# STOCK

## MALE



## FEMALE



### SIZING CHART

#### MEN'S SINGLET

SIZE	WEIGHT (LBS.)	INSEAM
6XS	<30	4.25"
5XS	30-40	5"
4XS	40-55	5.5"
3XS	55-75	5.5"
2XS	75-95	5.75"
XS	95-115	7"
S	115-135	7"
M	135-160	7"
L	160-190	7"
XL	190-220	8.5"
2XL	220-250	8.75"
3XL	250-275	8.75"

### SIZING CHART

#### WOMEN'S SINGLET

SIZE	WT (LBS.)	INSEAM
5XS	30-40	4"
4XS	40-55	5"
3XS	55-70	5"
2XS	70-85	5"
XS	85-100	6"
S	100-115	6"
M	115-135	7"
L	135-155	7"
XL	155-175	7"
2XL	175-195	7"
3XL	195-215	7"

# STOCK

## #CSS100 The Compression Shirt



Black



Dark Grey



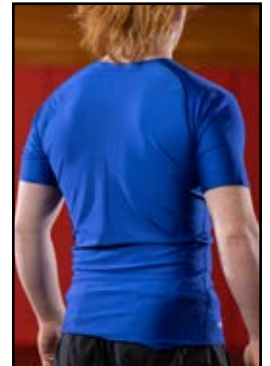
Royal



Red



- Unisex athletic cut
- 4 available colors
- NFHS compliant
- 3" tail in back
- Moisture wicking material
- Flatlock stitching
- Raglan Sleeves
- Tagless label
- 4 way stretch lycra material
- 82% Nylon/ 18% Spandex
- 5.9 oz/yd<sup>2</sup>
- Made in the U.S.A.





# STOCK

## #SFS100 The Fight Shorts



Black



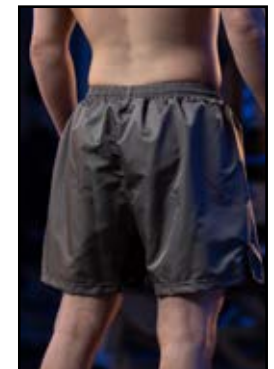
Dark Grey



Royal



Red



- Unisex athletic cut
- 4 available colors
- Solid colored body
- Black buckle
- Black 4 way stretch lycra crotch insert
- NFHS compliant
- Inside drawstring waistband
- Reinforced side slit
- Poly microfiber body
- Elastic waistband
- 6.44 oz/yd<sup>2</sup>
- Made in the U.S.A.

# STOCK

## #5 The Compression Shorts



Black



White



Dark Grey



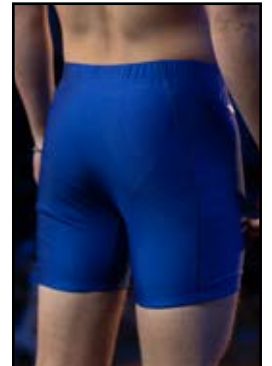
Royal



Red

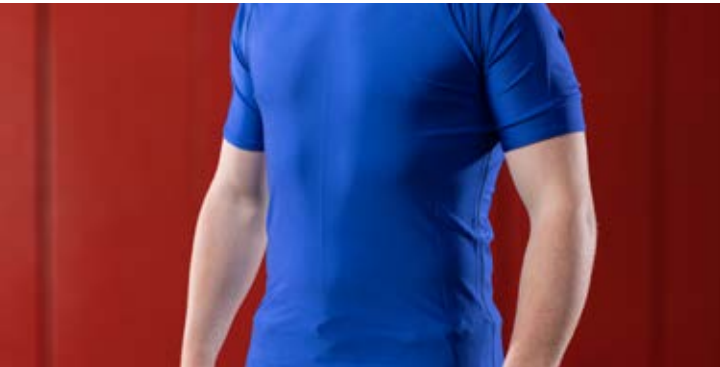


- Unisex athletic cut
- 5 available colors
- Solid colored body with matching flatlock stitching
- Moisture wicking material
- Elastic waistband
- Tagless label
- 4 way stretch lycra material
- Compression fit
- 82% Nylon/ 18% Spandex
- 5.9 oz/yd<sup>2</sup>
- Made in the U.S.A.



# STOCK

## COMPRESSION TOPS



## FIGHT SHORTS



## COMPRESSION SHORTS



### -sizing chart

#### COMPRESSION SHIRT

SIZE	WEIGHT (LBS.)
6XS	<30
5XS	30-40
4XS	40-55
3XS	55-75
2XS	75-95
XS	95-115
S	115-135
M	135-160
L	160-190
XL	190-220
2XL	220-250
3XL	250-275

### -sizing chart

#### PMF FIGHT SHORTS

SIZE	WEIGHT (LBS.)	WAIST	INSEAM
6XS	<30	18-20"	3.5"
5XS	30-40	19-21"	4"
4XS	40-55	20-22"	4"
3XS	55-75	21-23"	5"
2XS	75-95	22-24"	5"
XS	95-115	23-25"	5.25"
S	115-135	24-27"	5.25"
M	135-160	28-32"	6.5"
L	160-190	31-34"	6.5"
XL	190-220	34-36"	7"
2XL	220-250	36-40"	7"
3XL	250-275	40-44"	7.75"

### -sizing chart

#### COMPRESSION SHORTS

SIZE	WEIGHT (LBS.)	INSEAM
6XS	<30	3.75"
5XS	30-40	4.5"
4XS	40-55	5"
3XS	55-75	5.5"
2XS	75-95	5.5"
XS	95-115	6.75"
S	115-135	6.75"
M	135-160	7"
L	160-190	7"
XL	190-220	7.75"
2XL	220-250	8.75"
3XL	250-275	8.75"

# STOCK

## The Tournament Series Doublets



#522-CT: The Blossoms: Compression Top



#522-RG: The Blossoms: Rash Guard



#522-4WSC: The Blossoms: Fight Shorts

- Unisex athletic cut
- 100% full vibrant colored sublimation
- Dynamic designs
- Superior moisture management material
- Compression tops & fight shorts are NFHS compliant
- Easily converted to a custom team order
- 82% Micropoly/ 18% Spandex
- 8.8 oz/yd<sup>2</sup> weight material
- Made in the U.S.A.

- Compression Tops & Rash Guards:**
- Flatlock stitching
- Raglan Sleeves
- Tagless label
- Fight Shorts**
- 4 way stretch body
- Elastic waistband
- Inside drawstring waistband
- Reinforced side slit



# STOCK

## The Tournament Series Doublets



#523-CT: The Kracken: Compression Top: Black, Blue, Red



#523-RG: The Kracken: Rash Guard: Black, Blue, Red



#523-4WSC: The Kracken: Fight Shorts: Black, Blue, Red

- Unisex cut
- 100% full vibrant colored sublimation
- Dynamic designs
- Superior moisture management material
- Compression tops & fight shorts are NFHS compliant

- Easily converted to a custom team order
- 82% Polyester/ 18% Spandex
- 8.8 oz/yd<sup>2</sup> weight material
- Made in the U.S.A.

- **Compression Tops & Rash Guards**
- Flatlock stitching
- Raglan Sleeves
- Tagless label

- **Fight Shorts**
- 4 way stretch body
- Elastic waistband
- Inside drawstring waistband
- Reinforced side slit

# STOCK

## The Tournament U.S.A. Series Doublets



#515-CT: The U.S.A. Glory: Compression Top



#515-RG: The U.S.A. Glory: Rash Guard



#515-4WSC: The U.S.A. Glory: Fight Shorts

- Unisex athletic cut
- 100% full vibrant colored sublimation
- Dynamic designs
- Superior moisture management material
- Compression tops & fight shorts are NFHS compliant
- Easily converted to a custom team order
- 82% Micropoly/ 18% Spandex
- 8.8 oz/yd<sup>2</sup> weight material
- Made in the U.S.A.

- Compression Tops & Rash Guards:**
- Flatlock stitching
- Raglan Sleeves
- Tagless label
- Fight Shorts**
- 4 way stretch body
- Elastic waistband
- Inside drawstring waistband
- Reinforced side slit



# STOCK

## The Tournament U.S.A. Series Doublets



#514-CT: The U.S.A. Patriot: Compression Top



#514-RG: The U.S.A. Patriot: Rash Guard



#514-4WSC: The U.S.A. Patriot: Fight Shorts

- Unisex athletic cut
- 100% full vibrant colored sublimation
- Dynamic designs
- Superior moisture management material
- Compression tops & fight shorts are NFHS compliant
- Easily converted to a custom team order
- 82% Micropoly/ 18% Spandex
- 8.8 oz/yd<sup>2</sup> weight material
- Made in the U.S.A.

- Compression Tops & Rash Guards:**
- Flatlock stitching
- Raglan Sleeves
- Tagless label
- Fight Shorts**
- 4 way stretch body
- Elastic waistband
- Inside drawstring waistband
- Reinforced side slit

# STOCK

## The Tournament U.S.A. Series Doublets



#520-CT: The U.S.A. Pledge: Compression Top



#520-RG: The U.S.A. Pledge: Rash Guard



#520-4WSC: The U.S.A. Pledge: Fight Shorts

- Unisex athletic cut
- 100% full vibrant colored sublimation
- Dynamic designs
- Superior moisture management material
- Compression tops & fight shorts are NFHS compliant
- Easily converted to a custom team order
- 82% Micropoly/ 18% Spandex
- 8.8 oz/yd<sup>2</sup> weight material
- Made in the U.S.A.

- Compression Tops & Rash Guards:**
- Flatlock stitching
- Raglan Sleeves
- Tagless label
- Fight Shorts**
- 4 way stretch body
- Elastic waistband
- Inside drawstring waistband
- Reinforced side slit



# STOCK

## The Tournament U.S.A. Series Doublets



#516-CT: The U.S.A. Stars: Compression Top



#516-RG: The U.S.A. Stars: Rash Guard



#516-4WSC: The U.S.A. Stars: Fight Shorts

- Unisex athletic cut
- 100% full vibrant colored sublimation
- Dynamic designs
- Superior moisture management material
- Compression tops & fight shorts are NFHS compliant
- Easily converted to a custom team order
- 82% Micropoly/ 18% Spandex
- 8.8 oz/yd<sup>2</sup> weight material
- Made in the U.S.A.

- Compression Tops & Rash Guards:**
- Flatlock stitching
- Raglan Sleeves
- Tagless label
- Fight Shorts**
- 4 way stretch body
- Elastic waistband
- Inside drawstring waistband
- Reinforced side slit

# STOCK

## The Tournament U.S.A. Series Doublets



#517-CT: The U.S.A. Stripes: Compression Top



#517-RG: The U.S.A. Stripes: Rash Guard



#517-4WSC: The U.S.A. Stripes: Fight Shorts

- Unisex athletic cut
- 100% full vibrant colored sublimation
- Dynamic designs
- Superior moisture management material
- Compression tops & fight shorts are NFHS compliant
- Easily converted to a custom team order
- 82% Micropoly/ 18% Spandex
- 8.8 oz/yd<sup>2</sup> weight material
- Made in the U.S.A.

### Compression Tops & Rash Guards:

- Flatlock stitching
- Raglan Sleeves
- Tagless label

### Fight Shorts

- 4 way stretch body
- Elastic waistband
- Inside drawstring waistband
- Reinforced side slit



# STOCK

## The Tournament U.S.A. Series Doublets



#518-CT: The U.S.A. Victor: Compression Top



#518-RG: The U.S.A. Victor: Rash Guard



#518-4WSC: The U.S.A. Victor: Fight Shorts

- Unisex athletic cut
- 100% full vibrant colored sublimation
- Dynamic designs
- Superior moisture management material
- Compression tops & fight shorts are NFHS compliant
- Easily converted to a custom team order
- 82% Micropoly/ 18% Spandex
- 8.8 oz/yd<sup>2</sup> weight material
- Made in the U.S.A.

- Compression Tops & Rash Guards:**
- Flatlock stitching
- Raglan Sleeves
- Tagless label
- Fight Shorts**
- 4 way stretch body
- Elastic waistband
- Inside drawstring waistband
- Reinforced side slit

# STOCK

## The Tournament Drip Series Compression & Rash Guard Shirts



#22CT: The Drip: Compression Top: Silver, Red, Purple, Orange, Green, Blue, Brown, Black, Yellow



#22RG: The Drip: Compression Top: Silver, Red, Purple, Orange, Green, Blue, Brown, Black, Yellow

- Unisex cut
- 100% full vibrant colored sublimation
- Dynamic designs
- Superior moisture management material
- Tagless label

- Flatlock stitching
- Raglan Sleeves
- Compression tops are NFHS compliant
- Easily converted to a custom team order

- 82% Micropoly/ 18% Spandex
- 8.8 oz/yd<sup>2</sup> weight material
- Made in the U.S.A.



# STOCK

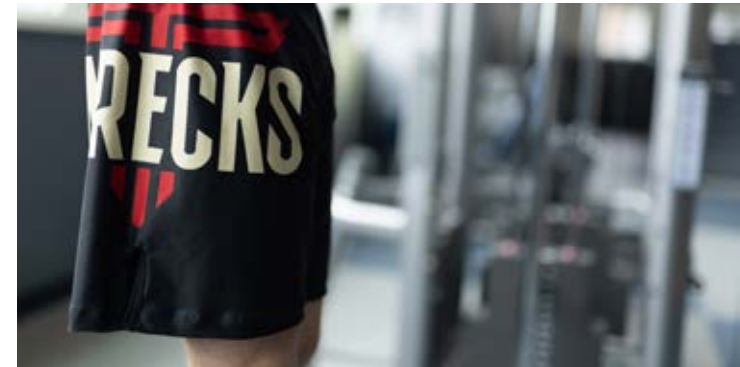
## COMPRESSION TOP



## RASH GUARD



## FIGHT SHORTS



### -sizing chart

#### COMPRESSION SHIRT

SIZE	WEIGHT (LBS.)
6XS	<30
5XS	30-40
4XS	40-55
3XS	55-75
2XS	75-95
XS	95-115
S	115-135
M	135-160
L	160-190
XL	190-220
2XL	220-250
3XL	250-275

### -sizing chart

#### RASH GUARD SHIRT

SIZE	WEIGHT (LBS.)
2XS	75-95
XS	95-115
S	115-135
M	135-160
L	160-190
XL	190-220
2XL	220-250

### -sizing chart

#### FOUR WAY STRETCH FIGHT SHORTS

SIZE	WEIGHT (LBS.)	WAIST	INSEAM
6XS	<30	18-20"	3.5"
5XS	30-40	19-21"	4"
4XS	40-55	20-22"	4"
3XS	55-75	21-23"	5"
2XS	75-95	22-24"	5"
XS	95-115	23-25"	6.5"
S	115-135	24-27"	6.5"
M	135-160	28-32"	7"
L	160-190	31-34"	7.5"
XL	190-220	34-36"	7.5"
2XL	220-250	36-40"	8.25"
3XL	250-275	40-44"	8.25"

# STOCK

## #EW100 The Edge Men's Singlet



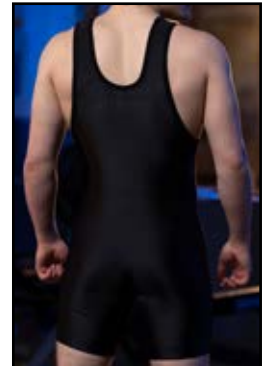
Black

Royal

Red



- Men's standard cut
- 3 available colors
- Moisture wicking material
- Gripper elastic leg cuff
- 4 way stretch lycra material
- Solid shiny nylon spandex
- 82% Nylon/ 18% Spandex
- 5.9 oz/yd<sup>2</sup>
- Made in Pakistan



# STOCK

## #EW200 The Edge Women's Singlet



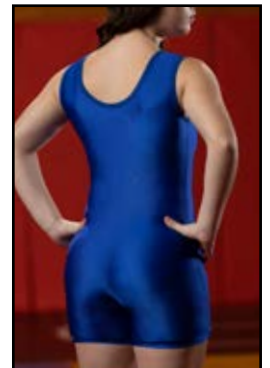
Black

Royal

Red



- Women's cut
- 3 available colors
- Moisture wicking material
- Gripper elastic leg cuff
- 4 way stretch lycra material
- Solid shiny nylon spandex
- 82% Nylon/ 18% Spandex
- 5.9 oz/yd<sup>2</sup>
- Made in Pakistan



# STOCK

## #EW102 The Edge Fight Shorts



Black



Royal



Red



- Unisex athletic cut
- 3 available color combinations
- NFHS compliant
- Drawstring waistband
- Elastic waistband
- 4 way stretch lycra crotch insert
- Reinforced side slit
- Poly microfiber material
- 6.44 oz/yd<sup>2</sup>
- Made in Pakistan



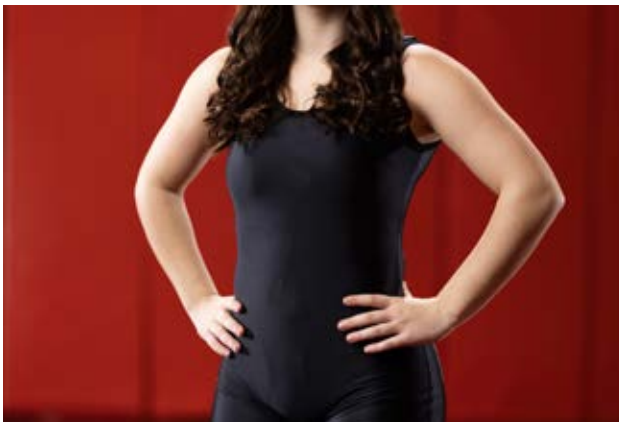


# STOCK

## MALE



## FEMALE



## FIGHT SHORTS



### SIZEING CHART

#### MEN'S EDGE SINGLET

SIZE	WEIGHT (LBS.)	INSEAM
4XS	40-55	5.5"
3XS	55-75	5.5"
2XS	75-95	5.75"
XS	95-115	7"
S	115-135	7"
M	135-160	7"
L	160-190	7"
XL	190-220	8.5"
2XL	220-250	8.75"
3XL	250-275	8.75"

### SIZEING CHART

#### WOMEN'S EDGE SINGLET

SIZE	WT (LBS.)	INSEAM
4XS	40-55	5"
3XS	55-70	5"
2XS	70-85	5"
XS	85-100	6"
S	100-115	6"
M	115-135	7"
L	135-155	7"
XL	155-175	7"
2XL	175-195	7"
3XL	195-215	7"

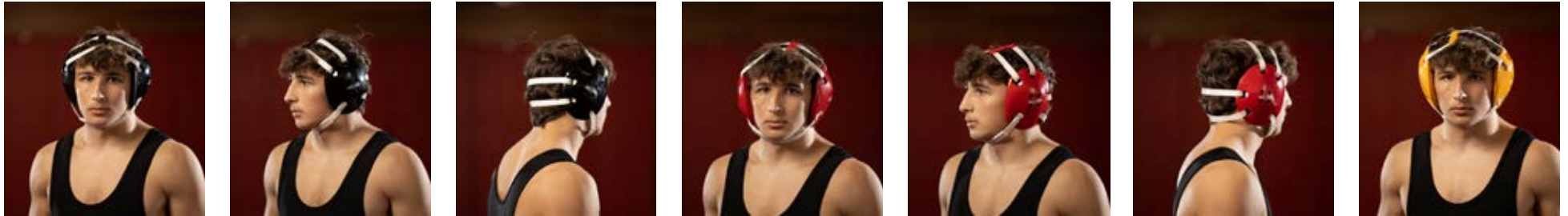
### SIZEING CHART

#### EDGE PMF FIGHT SHORTS

SIZE	WEIGHT (LBS.)	WAIST	INSEAM
4XS	40-55	20-22"	4"
3XS	55-75	21-23"	5"
2XS	75-95	22-24"	5"
XS	95-115	23-25"	5.25"
S	115-135	24-27"	5.25"
M	135-160	28-32"	6.5"
L	160-190	31-34"	6.5"
XL	190-220	34-36"	7"
2XL	220-250	36-40"	7"

# STOCK

## #30 The Original Headgear

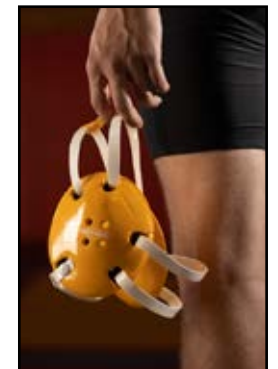


Black/White

Red/White

Gold/White

Black/Black



- 4 color options
- Hard inner shell
- Soft dipped foam exterior
- 5 point adjustment
- Built-in straps
- Easily cleaned
- One time adjustment
- Easy on and off
- Made in China

# STOCK

## #32 The Halo Headgear



Black

White

Dark Green

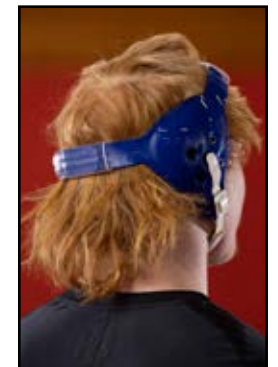
Navy

Royal

Red



- 6 color options
- Low profile
- Hard flexible plastic outer shell
- Soft padding inner lining
- 3 point adjustment
- Built-in chin strap
- Easily cleaned
- One time adjustment
- Easy on and off
- Made in China



## #33 The Triforce Headgear



Black

White

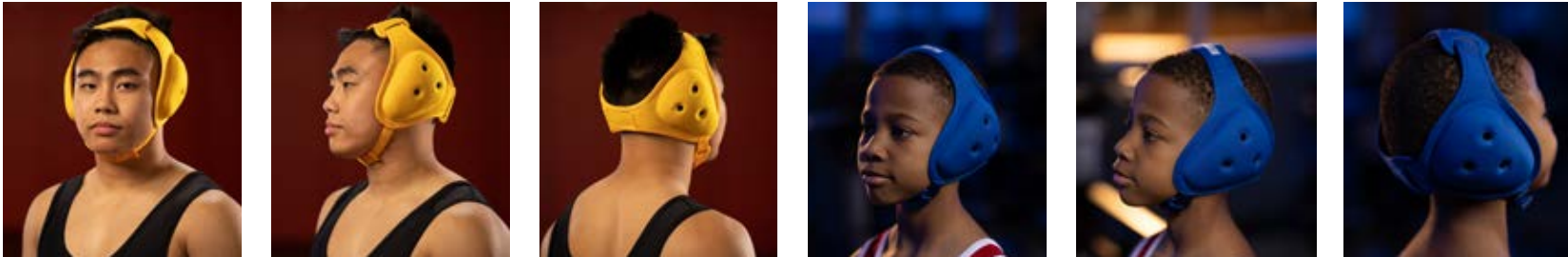


- 2 color options
- Dipped foam inner cushion
- Hard plastic outer shell
- 4-strap harness
- Chin cushion
- Velcro closures
- 4 point adjustment
- Easily cleaned
- Easily adjustable
- Easy on and off
- Made in China



# STOCK

## #34 & #35 The Dynasty Youth & Adult Headgear



Black

Navy

Royal

Red

Gold

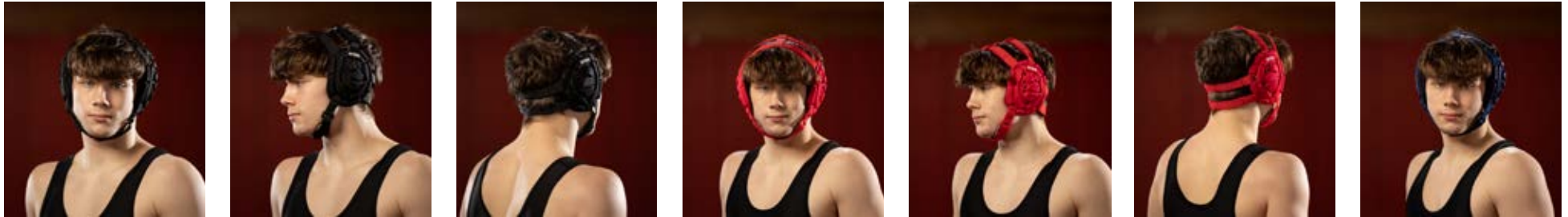
White

- 6 color options
- 2 sizes available
- Youth: Hat size under 7, under 100 lbs
- Adult: Hat size 7+, over 100 lbs.
- Hard plastic shell inside
- Soft nylon exterior
- Neoprene chin strap
- Chin strap cushion
- 3 point velcro adjustment
- On the fly adjustment
- Easy on and off
- Made in Vietnam



# STOCK

## #36 The Medalist Headgear



Black



Navy



Royal



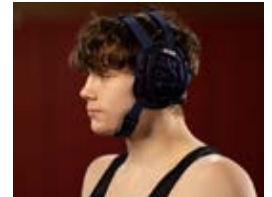
Red



Gold



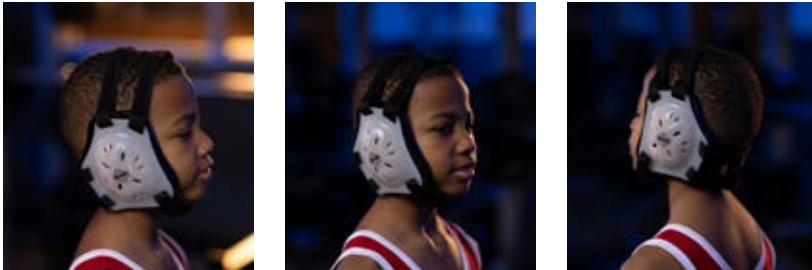
White



- 6 color options
- Adult: Hat size 7+, over 100 lbs.
- Hard shell insert
- Soft padded exterior
- Chin cushion
- 5 point velcro adjustment
- On the fly adjustment
- Easy on and off
- Made in Vietnam



## #40Y The Renegade Youth Headgear



Black

- Black straps & dipped foam pad
- Transparent plastic outer shell
- Dipped foam inner cushion
- Hard plastic outer shell
- 5-strap harness
- Chin cushion
- Velcro closures
- 5 point adjustment
- On the fly adjustment
- Easy on and off
- Made in China

# STOCK

## #1 The Briefs



Black



White



Royal

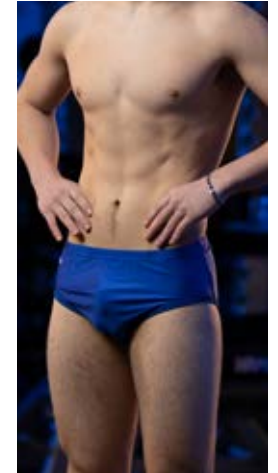


Red

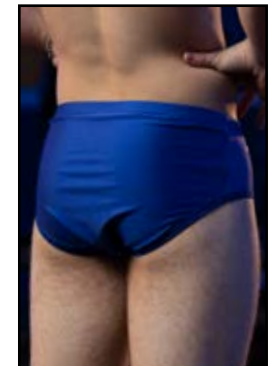
### SIZING CHART

#### MEN'S BRIEFS

SIZE	WEIGHT (LBS.)
XS	95-115
S	115-135
M	135-160
L	160-190
XL	190-220
2XL	220-250
3XL	250-275



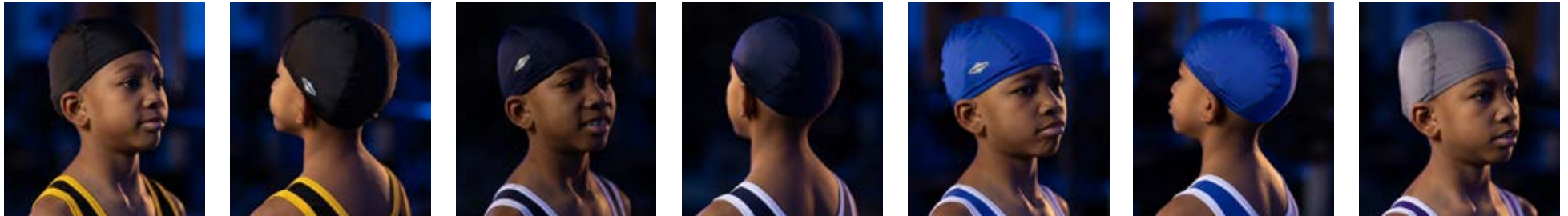
- Men's cut
- 4 available colors
- Effortlessly slides under your outer garments
- Compression athletic fit
- Moisture wicking material
- Tagless label
- 4 way stretch lycra material
- 82% Nylon/ 18% Spandex
- 5.9 oz/yd<sup>2</sup>
- Made in the U.S.A.





# STOCK

## #12Y & #12A The Youth & Adult Hair Cap



Black



Dark Grey



Navy



Royal



Red



- Unisex fit
- 2 sizes
- 5 available colors
- Built-in loops to secure to headgear (Fold under option to hide)
- Inner elastic band
- Moisture wicking material
- Flatlock stitching
- Tagless label
- 4 way stretch lycra material
- 82% Nylon/ 18% Spandex
- 5.9 oz/yd<sup>2</sup>
- Made in the U.S.A.



# STOCK

## #B21 The Large Sports Gear Bag



EXTERNAL POCKET  
WITH ZIPPER



MESH SIDE PANELS



PADDED BACK  
FOR COMFORT



SPACIOUS INTERNAL POCKET



Adult

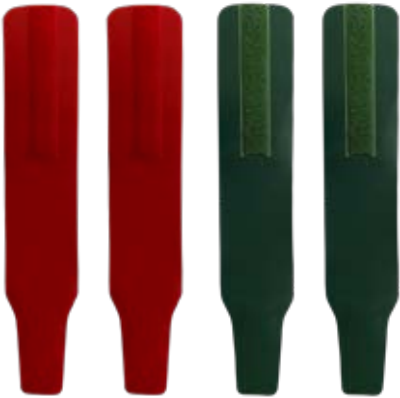
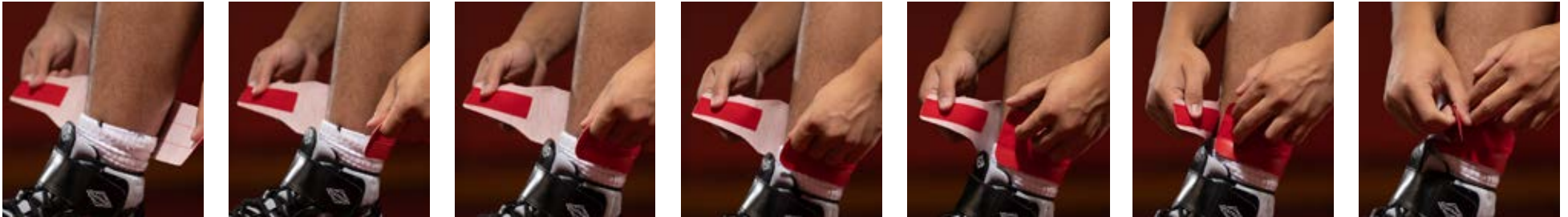


- Drawstring closure
- Mesh side panels
- Spacious pockets
- Outer zipper pocket
- Padded back
- Adjustable straps
- Light weight material
- Water resistant
- Made in China



# STOCK

## #38 The Ankle Bands



Green/Red



- 4 bands in a set
- 2 Red, 2 Green
- Soft vinyl material
- Strong velcro closure
- Highly visible
- 13" in length
- 2.5" in height
- Light weight
- Durable
- Made in the U.S.A.



# STOCK

## #42 The Reversible Knee Pad



Black/Royal

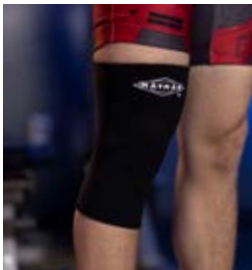
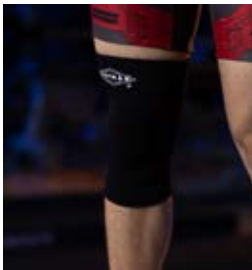
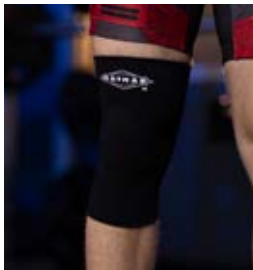
<b>SIZING CHART</b>	
KNEE PAD	
SIZE	WEIGHT (LBS.)
XS	40-70
S	70-120
M	120-160
L	160-190
XL	190-240

- 5 available sizes
- Black outside, royal blue inside
- Contoured fit
- Thick center pad
- Neoprene material
- Stretches with movement
- Compression fit for support
- Made in China



# STOCK

## #44Y & #44A The Youth & Adult Knee Sleeve



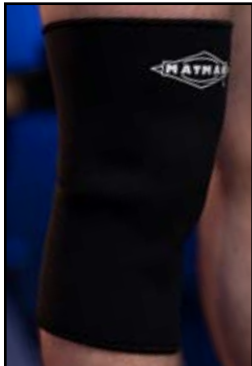
Black

SIZING CHART	
YOUTH KNEE SLEEVE	
SIZE	WEIGHT (LBS.)
S	40-55
M	55-75
L	75-120
XL	120-160

SIZING CHART	
ADULT KNEE SLEEVE	
SIZE	WEIGHT (LBS.)
S	70-120
M	120-160
L	160-190
XL	190-240



- 8 available sizes
- Black neoprene material
- Contoured fit
- Stretches with movement
- Compression fit for support
- Made in China



# STOCK

## #46 The Air Knee Pad



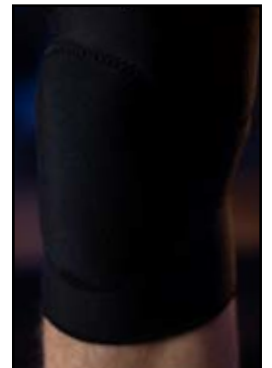
Black

- 5 available sizes
- Contoured fit
- Thick padding for patella
- Special support padding for back of the knee
- Additional medial collateral ligament support
- Comfort zone back seam
- Neoprene material
- Stretches with movement
- Compression fit for support
- Made in China

### -sizing chart

#### KNEE PAD

SIZE	WEIGHT (LBS.)
XS	40-70
S	70-120
M	120-160
L	160-190
XL	190-240



# CUSTOM

# CUSTOM

## SUBLIMATION

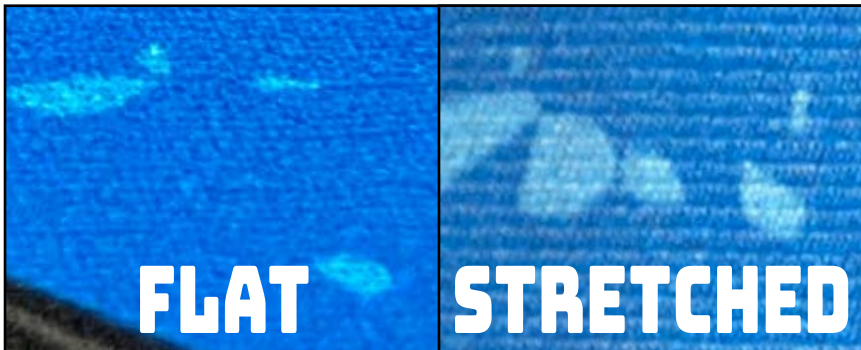
All of our custom apparel items are canvases for you to create your masterpiece, or your teams gear. Either way, we are here to help bring your design come to life.

Our company is located in Lakewood, Washington. Washington's finest is at your service, creating top of the line graphics and top of the line quality. As things do, sometimes they go awry, being located in the continental U.S. we are fast and easy to resolve any issue that may arise, Monday through Friday, 9 hours a day.

We use top-notch quality sublimation fabrics and inks. The fabric is the preference of elite competitors. Our ink is water-based formulated with disperse dyes which are fixed onto our sublimation fabric via sublimation process. The ink is dispersed by turning it into a gas under 400 Degrees of heat. Leaving no dyes to run or vinyl transfers/screen printing to crack.

Our custom sublimation fabric has moisture wicking technology to keep you dry as you compete.

Proudly made in Lakewood, WA by a production staff with over 50 years of experience perfecting the craft of apparel manufacturing.



## HEAT TRANSFERS

Give us your vector or raster design and we will turn it into a heat transferable piece of art.

We take our customizable stock item and adhere a vinyl transfer or two with a heat press. Art is sized to match the size of your item, modified for the transfer and then ordered.

These are sourced locally, 2 hours south of our manufacturing facility.



## PRICING INFO

Contact [Orders@MatmanUSA.com](mailto:Orders@MatmanUSA.com) for pricing & [Custom@MatmanUSA.com](mailto:Custom@MatmanUSA.com) for an art proof.



# CUSTOM

## Step 1. Pick a design

**WE HAVE AN ON-SITE PRODUCTION ARTIST TO DESIGN THE APPAREL WITH YOU...  
BRINGING YOUR IDEAS & CREATIONS TO LIFE.**



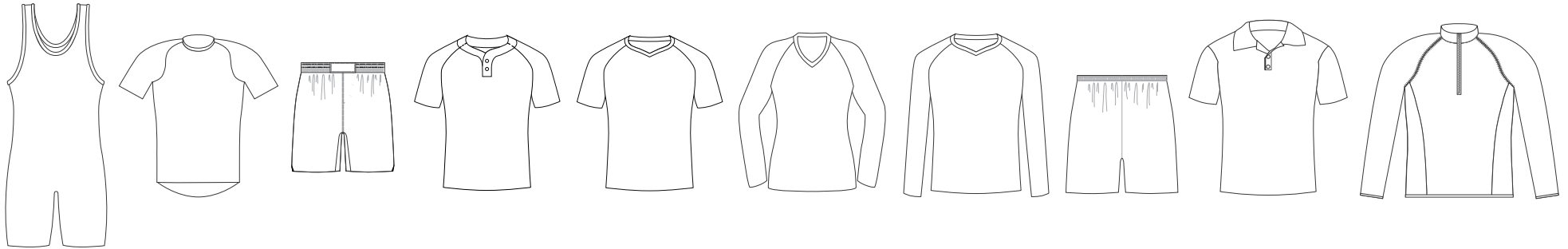
---

Step one to creating a custom designed sports apparel piece is to pick a base design you like. Gather any & all art references to send us.

---

# CUSTOM

## Step 2. Pick an item



**WRESTLING • BASEBALL/SOFTBALL • SOCCER • VOLLEYBALL • GOLF • BOWLING • WARM-UPS AND MORE**

**FROM WRESTLING TO VOLLEYBALL**

**AND SPORTS IN BETWEEN...**

**CHOOSE A**

**SPORTS APPAREL ITEM**

**SEE OUR EXTENSIVE COLLECTION IN THE PAGES BELOW.**

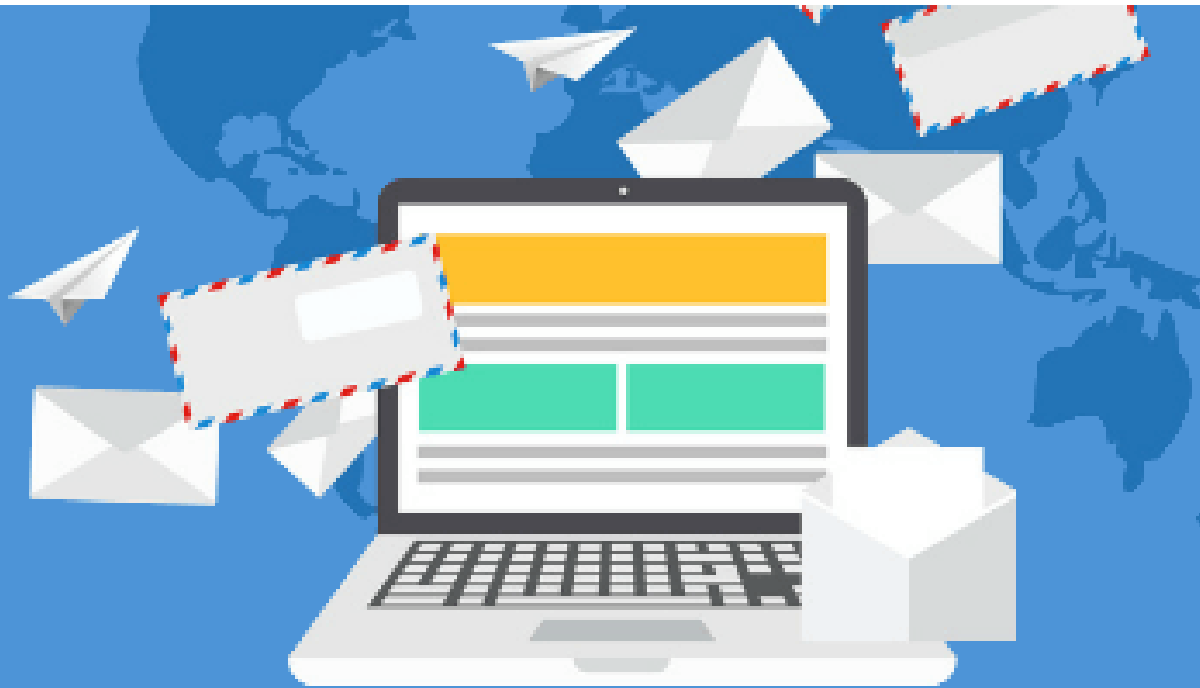
---

Step two. Scroll through the pages below and choose a garment you want to have customized.

---

# CUSTOM

## Step 3. Email us



---

Step three. Email [Custom@MatmanUSA.com](mailto:Custom@MatmanUSA.com) with your ideas and apparel item to start an art proof. Once complete you can place your order.

---

# CUSTOM

## Available Colors and Materials

COLORS	SUBLIMATION	TRIM	SPANDEX	ZIPPER	BUTTON
WHITE	X	X	X	X	X
PROCESS BLACK	X	X	X	X	X
GRAPHITE GREY	X				
CHARCOAL GREY	X	X	X	X	X
SILVER GREY	X		X	X	X
PEWTER	X				
BROWN	X	X	X	X	
COPPER	X				
OLIVE	X				
VEGAS GOLD	X	X	X		X
PEACH	X				
PURPLE	X	X	X	X	
VIOLET	X				
DARK NAVY	X				
NAVY	X	X	X	X	X

COLORS	SUBLIMATION	TRIM	SPANDEX	ZIPPER	BUTTON
DARK ROYAL	X			X	
ROYAL	X	X	X	X	X
LIGHT ROYAL	X				
ELECTRIC BLUE	X				
COLUMBIA BLUE	X	X	X		X
DOLPHIN BLUE	X				
TEAL	X	X			
SEAFOAM	X				
DARK GREEN	X	X	X	X	X
KELLY GREEN	X	X	X	X	X
LIME GREEN	X				
ELECTRIC GREEN	X				
OLD GOLD	X	X			
MARIGOLD	X				
RICH GOLD	X				

COLORS	SUBLIMATION	TRIM	SPANDEX	ZIPPER	BUTTON
ATHLETIC GOLD	X	X	X	X	X
YELLOW	X				
BURNT ORANGE	X				
MED. BURNT ORANGE	X				
MILD BURNT ORANGE	X				
ORANGE	X	X	X		
SALMON	X				
ELECTRIC PINK	X				
PINK	X	X	X		X
MAROON	X	X	X	X	
CARDINAL	X	X	X		X
CRIMSON	X			X	
SCARLET	X	X	X	X	X

Physical fabric colors may not match printed color chart. For accurate color matching contact your dealer to have physical swatches shipped.

Custom colors for sublimation are available. Custom colors will increase production time & cost.



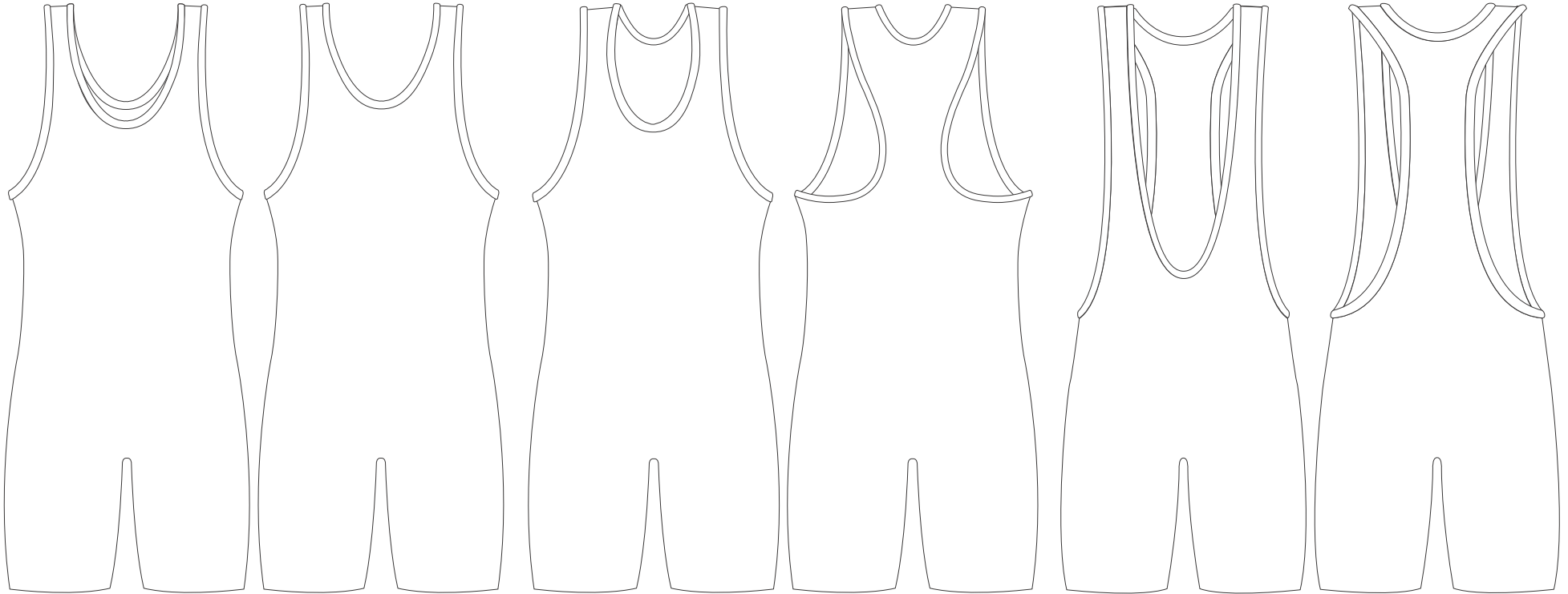
# CUSTOM

## Wrestling: Custom Design Examples



# CUSTOM

## Wrestling: Singlets



Standard Cut (Men's & Women's)

T-Back Cut (Men's)

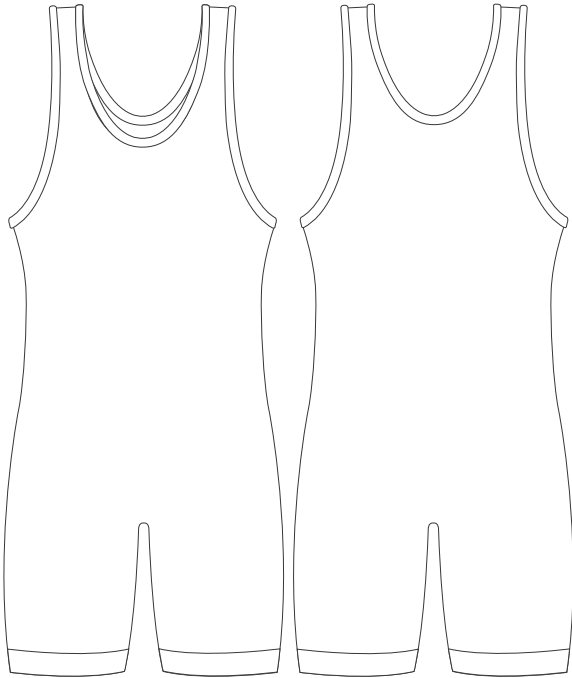
Low Cut (Men's)

- Standard cut (Men's & Women's)
- T-Back Cut & Low Cut (Men's Only)
- 100% full vibrant colored sublimation
- Dynamic designs
- Superior moisture management material
- Tagless label

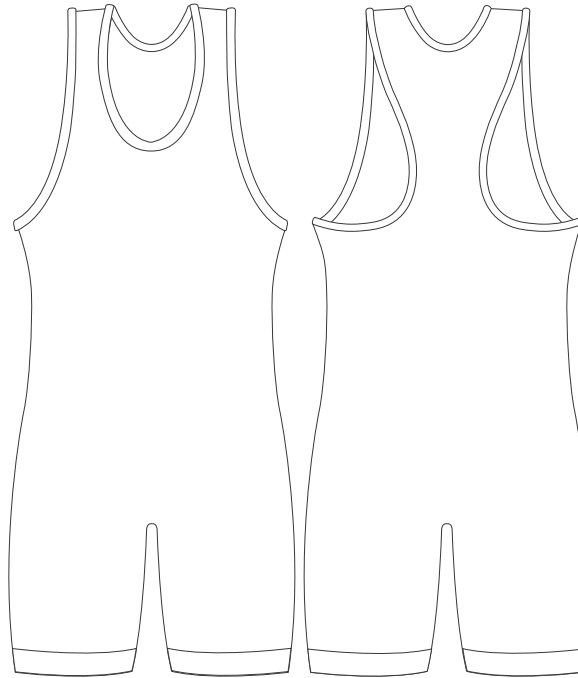
- Contrasting neck & arm trim
- 82% Micropoly/ 18% Spandex
- 8.8 oz/yd<sup>2</sup> weight material
- Gripper leg elastic
- Made in the U.S.A.

# CUSTOM

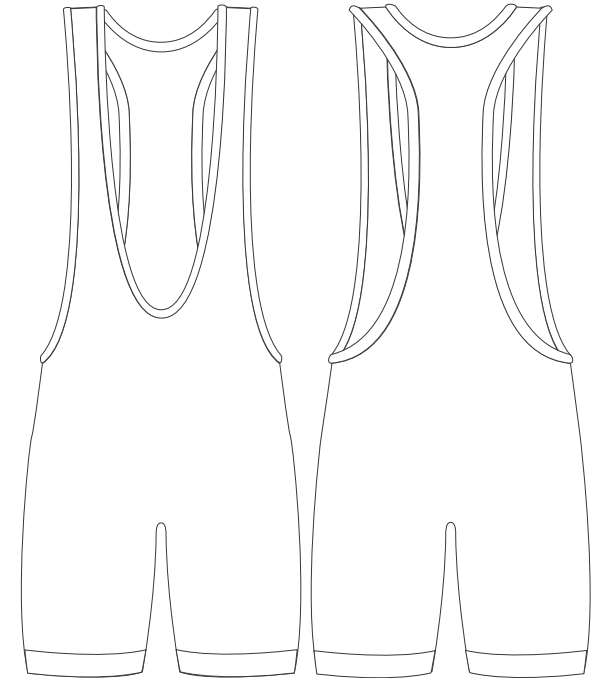
## Wrestling: Singlet Add Ons: Leg Cuffs



Standard Cut (Men's & Women's)



T-Back Cut (Men's)



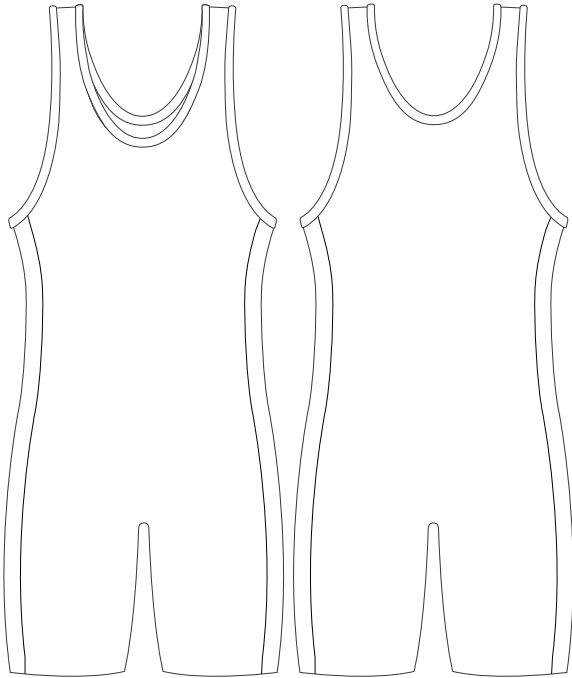
Low Cut (Men's)

- 2" compression cuff
- No gripper elastic
- 100% full vibrant colored sublimation
- Superior moisture management material
- 82% Micropoly/ 18% Spandex

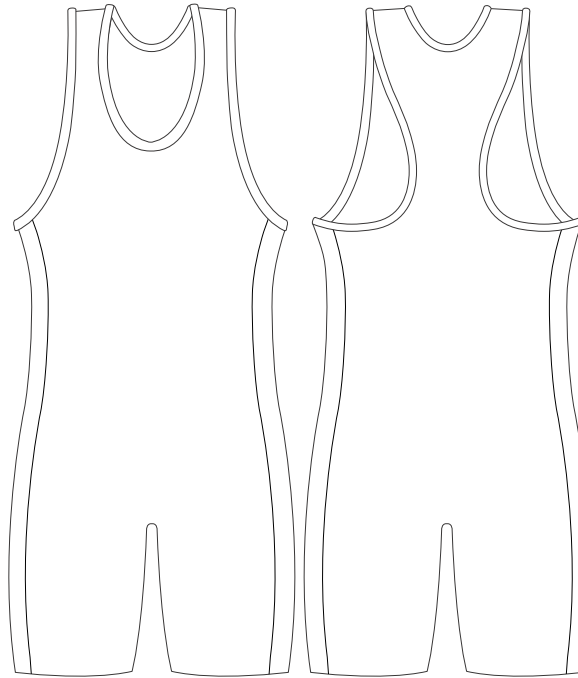
- 8.8 oz/yd<sup>2</sup> weight material
- Available on almost all singlets

# CUSTOM

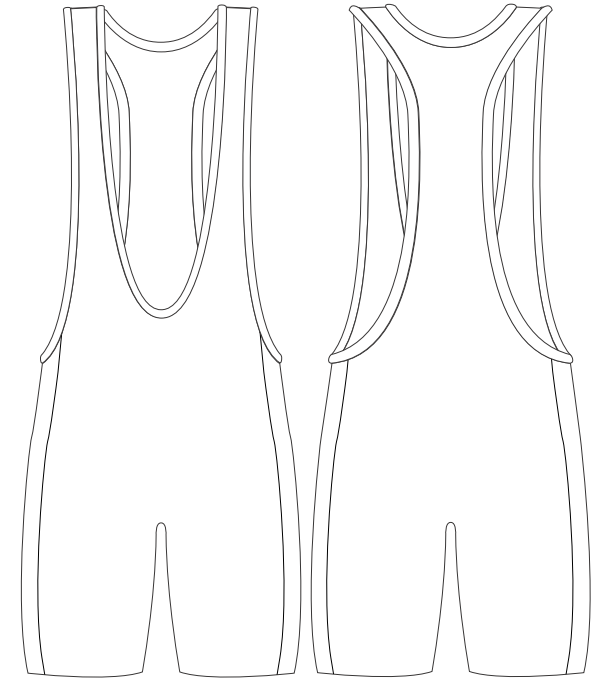
## Wrestling: Singlet Add Ons: Side Panels



Standard Cut (Men's & Women's)



T-Back Cut (Men's)



Low Cut (Men's)

- 5" men's side panel
- 3" women's side panel
- 100% full vibrant colored sublimation
- Superior moisture management material
- 82% Micropoly/ 18% Spandex

- 8.8 oz/yd<sup>2</sup> weight material
- Available on almost all singlets



# CUSTOM

## MALE



## FEMALE



### SIZING CHART

#### MEN'S SINGLET

SIZE	WEIGHT (LBS.)	INSEAM
6XS	<30	4.25"
5XS	30-40	5"
4XS	40-55	5.5"
3XS	55-75	5.5"
2XS	75-95	5.75"
XS	95-115	7"
S	115-135	7"
M	135-160	7"
L	160-190	7"
XL	190-220	8.5"
2XL	220-250	8.75"
3XL	250-275	8.75"

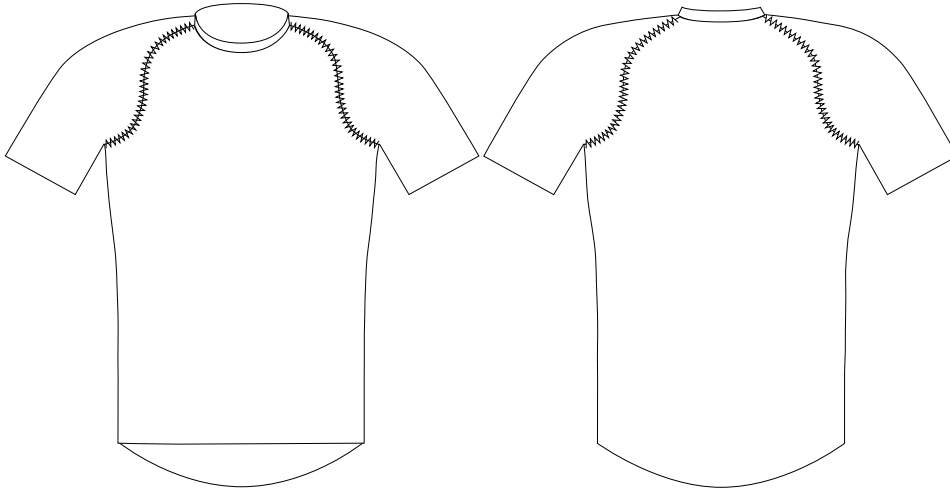
### SIZING CHART

#### WOMEN'S SINGLET

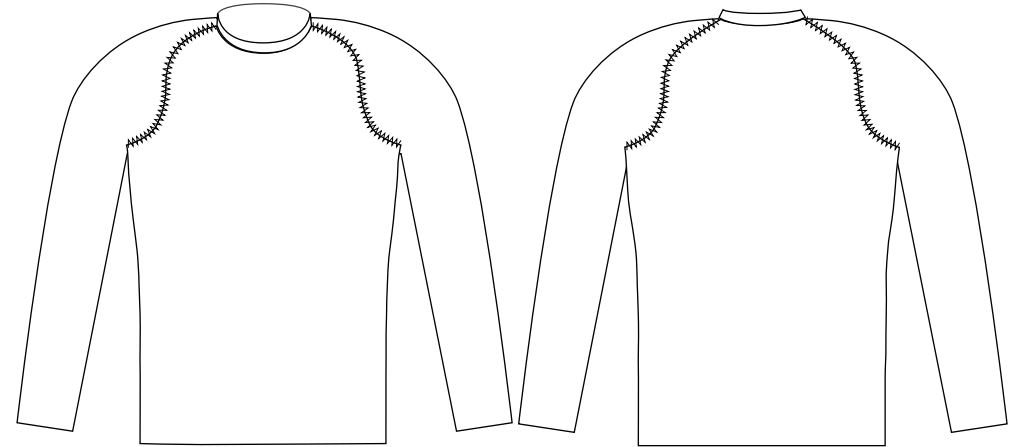
SIZE	WT (LBS.)	INSEAM
5XS	30-40	4"
4XS	40-55	5"
3XS	55-70	5"
2XS	70-85	5"
XS	85-100	6"
S	100-115	6"
M	115-135	7"
L	135-155	7"
XL	155-175	7"
2XL	175-195	7"
3XL	195-215	7"

# CUSTOM

## Wrestling: Compression Top • Rash guard



Compression Top



Rash Guard

- Unisex athletic cut
- 100% full vibrant colored sublimation
- NFHS compliant
- 3" tail in back
- Superior moisture management material
- Flatlock stitching
- Raglan sleeves
- Tagless labels
- 82% Micropoly/ 18% Spandex
- 8.8 oz/yd<sup>2</sup> weight material
- Made in the U.S.A.

- Unisex athletic cut
- 100% full vibrant colored sublimation
- Superior moisture management material
- Flatlock stitching
- Raglan sleeves
- Tagless labels
- 82% Micropoly/ 18% Spandex
- 8.8 oz/yd<sup>2</sup> weight material
- Made in the U.S.A.

# CUSTOM

## COMPRESSION TOP



## RASH GUARD



### -sizing chart

#### COMPRESSION SHIRT

SIZE	WEIGHT (LBS.)
6XS	<30
5XS	30-40
4XS	40-55
3XS	55-75
2XS	75-95
XS	95-115
S	115-135
M	135-160
L	160-190
XL	190-220
2XL	220-250
3XL	250-275

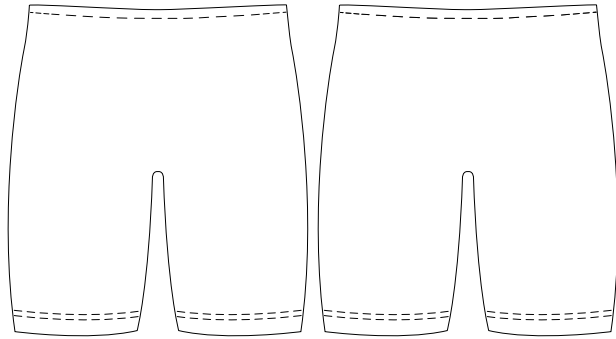
### -sizing chart

#### RASH GUARD SHIRT

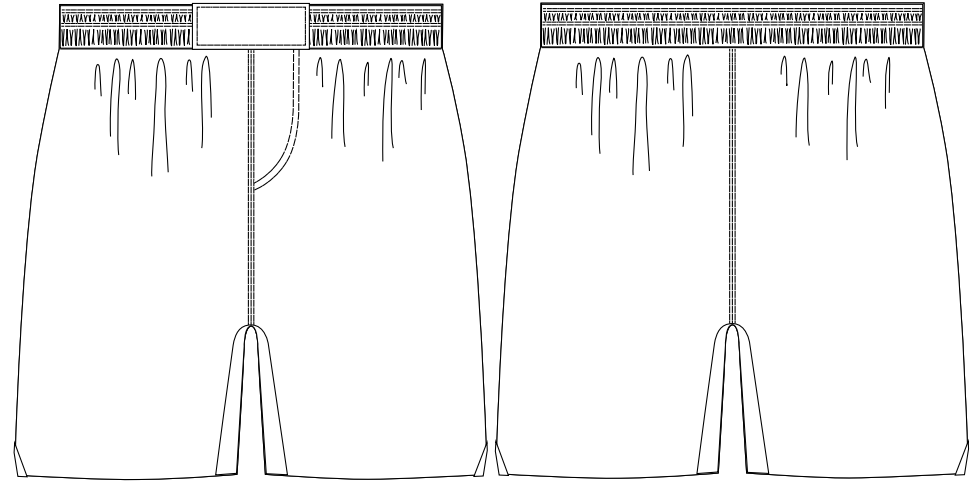
SIZE	WEIGHT (LBS.)
2XS	75-95
XS	95-115
S	115-135
M	135-160
L	160-190
XL	190-220
2XL	220-250

# CUSTOM

## Wrestling: Shorts



Compression Shorts



4 Way Stretch Fight Shorts

- Unisex athletic cut
- 100% full vibrant colored sublimation
- Superior moisture management material
- Flatlock stitching
- Tagless label
- 82% Micropoly/ 18% Spandex
- Gripper leg elastic
- 8.8 oz/yd<sup>2</sup> weight material
- Made in the U.S.A.

- Unisex athletic cut
- 100% full vibrant colored sublimation
- Superior moisture management material
- NFHS compliant
- Drawstring waistband
- Reinforced side slit
- Poly microfiber material belt buckle
- 4 way stretch material
- 82% Micropoly/ 18% Spandex

- 8.8 oz/yd<sup>2</sup> weight material
- Made in the U.S.A.



# CUSTOM

## COMPRESSION SHORTS



### SIZING CHART

#### COMPRESSION SHORTS

SIZE	WEIGHT (LBS.)	INSEAM
6XS	<30	3.75"
5XS	30-40	4.5"
4XS	40-55	5"
3XS	55-75	5.5"
2XS	75-95	5.5"
XS	95-115	6.75"
S	115-135	6.75"
M	135-160	7"
L	160-190	7"
XL	190-220	7.75"
2XL	220-250	8.75"
3XL	250-275	8.75"

## FIGHT SHORTS



### SIZING CHART

#### FOUR WAY STRETCH FIGHT SHORTS

SIZE	WEIGHT (LBS.)	WAIST	INSEAM
6XS	<30	18-20"	3.5"
5XS	30-40	19-21"	4"
4XS	40-55	20-22"	4"
3XS	55-75	21-23"	5"
2XS	75-95	22-24"	5"
XS	95-115	23-25"	6.5"
S	115-135	24-27"	6.5"
M	135-160	28-32"	7"
L	160-190	31-34"	7.5"
XL	190-220	34-36"	7.5"
2XL	220-250	36-40"	8.25"
3XL	250-275	40-44"	8.25"

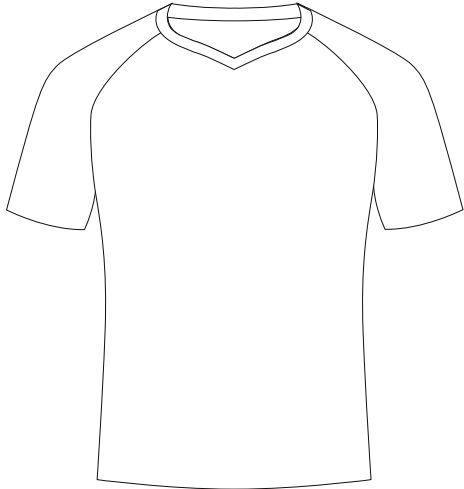
# CUSTOM

## Baseball/Softball: Custom Design Examples

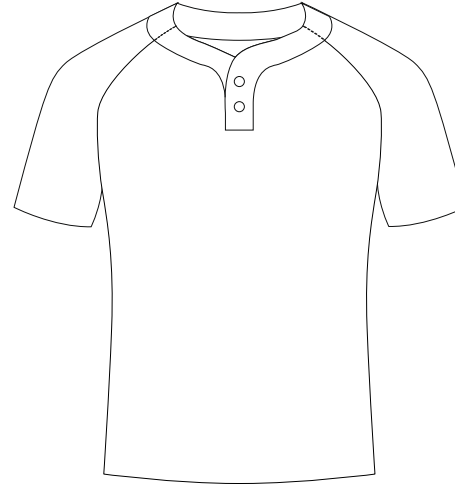
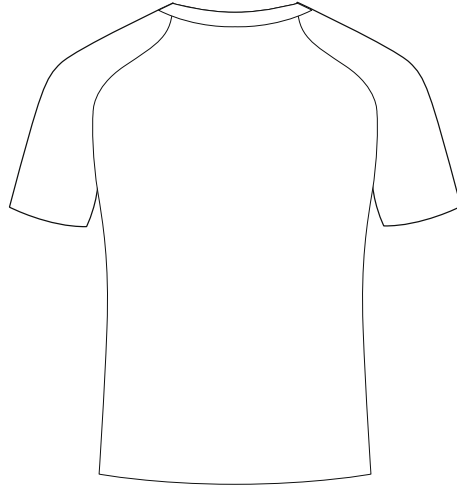


# CUSTOM

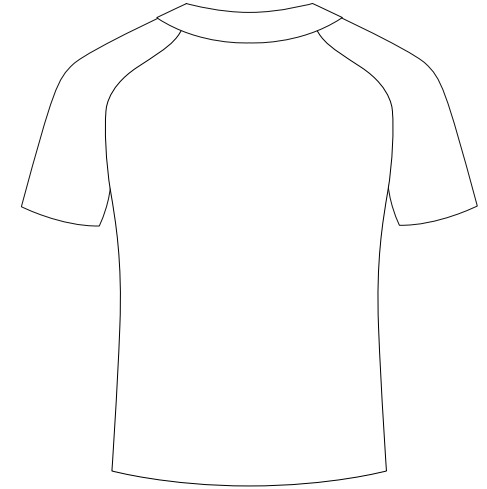
## Baseball/Softball: Jerseys



V-Neck Jersey



2 Button Jersey

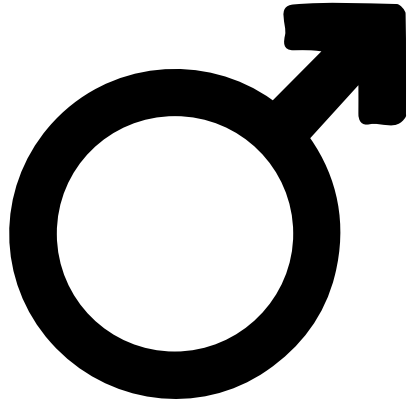


- V-Neck men's & women's cut
- Raglan sleeves
- 100% full vibrant colored sublimation
- 50+ UV Protection
- Lite weight fabric
- Moisture management material
- Tagless label
- 5.7 oz/yd<sup>2</sup> weight material
- 100% polyester
- Made in the U.S.A.

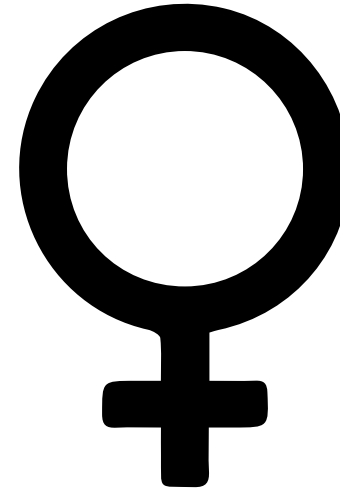
- 2 button men's & women's cut
- Raglan sleeves
- 100% full vibrant colored sublimation
- Limited stretch
- Snag resistant
- Heavy weight mesh fabric
- Moisture management material
- Tagless label
- 9.7 oz/yd<sup>2</sup> weight material
- 100% polyester
- Made in the U.S.A.

# CUSTOM

**MALE**



**FEMALE**



## SIZING CHART

V-NECK MEN'S BASEBALL JERSEY

	SIZE	CHEST WIDTH	FRONT LENGTH	BACK LENGTH
YOUTH	YS	33"	22.5"	24"
	YM	37"	23.5"	25.5"
	YL	39"	26"	28"
	YXL	41"	27.5"	29.5"
ADULT	S	42"	29"	31"
	M	45"	30.5"	32.5"
	L	48.5"	31.5"	33.5"
	XL	52"	32.5"	34.5"
	2XL	55.5"	33"	35.5"

## SIZING CHART

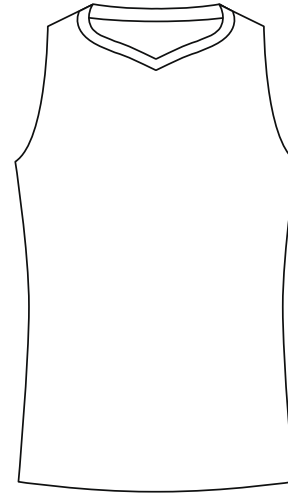
V-NECK WOMEN'S SOFTBALL JERSEY

	SIZE	CHEST WIDTH	FRONT LENGTH	BACK LENGTH
YOUTH	YS	32"	24.5"	25.5"
	YM	34"	25"	27"
	YL	36"	25.5"	28"
ADULT	S	37.5"	27"	29"
	M	40"	27.5"	29.5"
	L	44"	29"	30.5"
	XL	47"	29.5"	32"
	2XL	50"	30.5"	33"

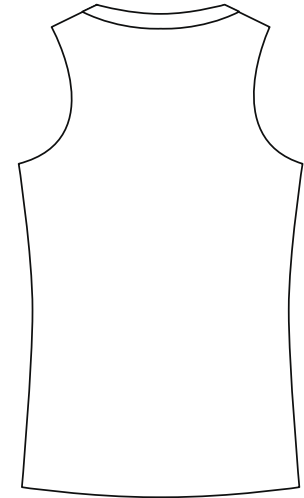


# CUSTOM

## Softball: Jerseys



Sleeveless V-Neck Jersey



### SIZING CHART

#### V-NECK WOMEN'S SLEEVELESS SOFTBALL JERSEY

	SIZE	CHEST WIDTH	FRONT LENGTH	BACK LENGTH
YOUTH	YS	32"	24.5"	25.5"
	YM	34"	25"	27"
	YL	36"	25.5"	28"
ADULT	S	37.5"	27"	29"
	M	40"	27.5"	29.5"
	L	44"	29"	30.5"
	XL	47"	29.5"	32"
	2XL	50"	30.5"	33"

- V-Neck sleeveless women's cut
- 100% full vibrant colored sublimation
- 50+ UV Protection
- Lite weight fabric
- Moisture management material
- Tagless label
- 5.7 oz/yc<sup>2</sup> weight material
- 100% polyester
- Made in the U.S.A.

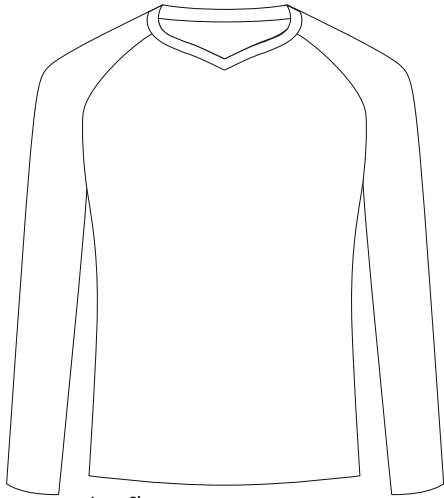
# CUSTOM

## Soccer: Custom Design Examples

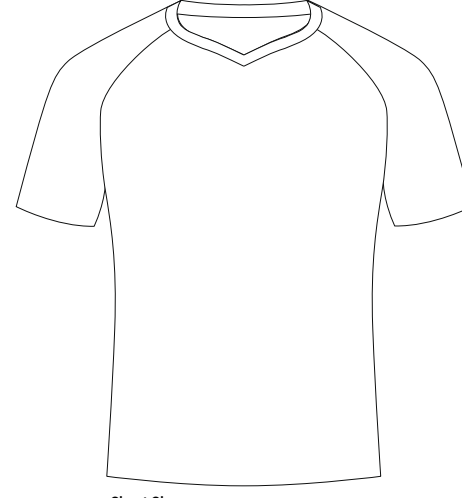
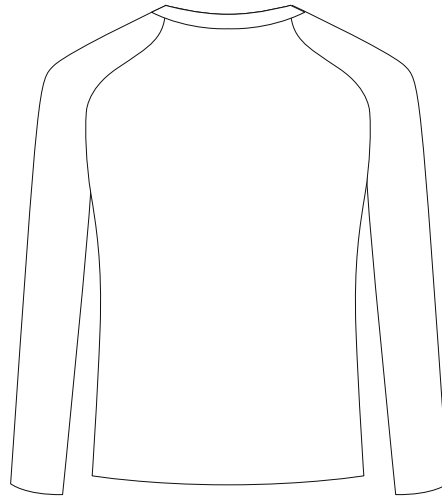


# CUSTOM

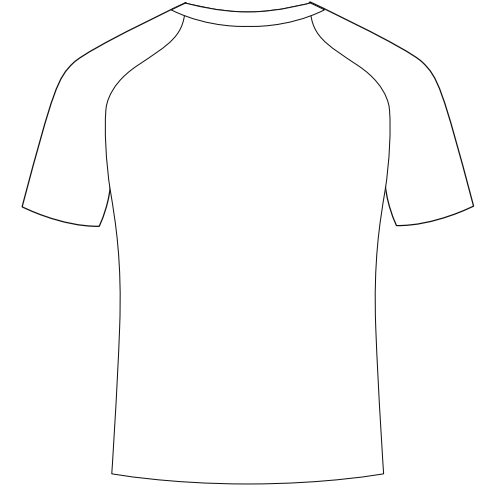
## Soccer: Jerseys



Long Sleeve



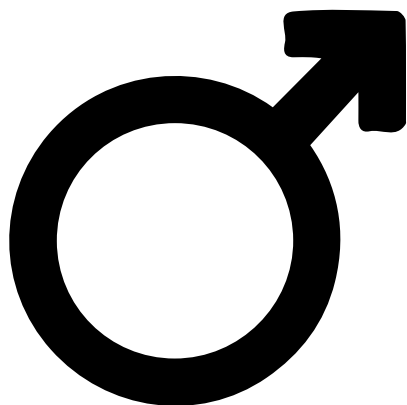
Short Sleeve



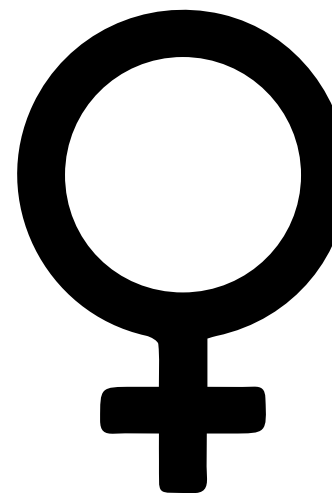
- 
- V-Neck men's & women's cut
  - 100% full vibrant colored sublimation
  - 50+ UV Protection
  - Lite weight fabric
  - Moisture management material
  - Raglan sleeves (Long or Short)
  - Tagless label
  - 5.7 oz/yd<sup>2</sup> weight material
  - 100% polyester
  - Made in the U.S.A.

# CUSTOM

**MALE**



**FEMALE**



## SIZING CHART

V-NECK MEN'S SOCCER JERSEY

	SIZE	CHEST WIDTH	FRONT LENGTH	BACK LENGTH
YOUTH	YS	31"	20.5"	23.5"
	YM	35"	21.5"	24.5"
	YL	37"	24"	26.5"
	YXL	39"	25.5"	27.5"
ADULT	S	40"	27"	29.5"
	M	43"	28.5"	30.5"
	L	46.5"	29.5"	32"
	XL	50"	32.5"	33"
	2XL	53.5"	33"	34"

## SIZING CHART

V-NECK WOMEN'S SOCCER JERSEY

	SIZE	CHEST WIDTH	FRONT LENGTH	BACK LENGTH
YOUTH	YS	32"	24.5"	25.5"
	YM	34"	25"	27"
	YL	36"	25.5"	28"
ADULT	S	37.5"	27"	29"
	M	40"	27.5"	29.5"
	L	44"	29"	30.5"
	XL	47"	29.5"	32"
	2XL	50"	30.5"	33"



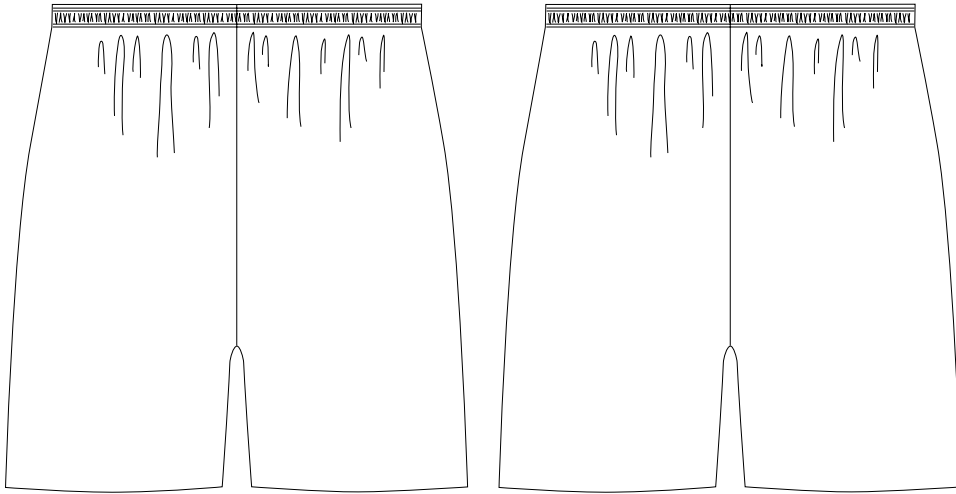
# CUSTOM

## Soccer: Custom Design Examples



# CUSTOM

## Soccer: Shorts

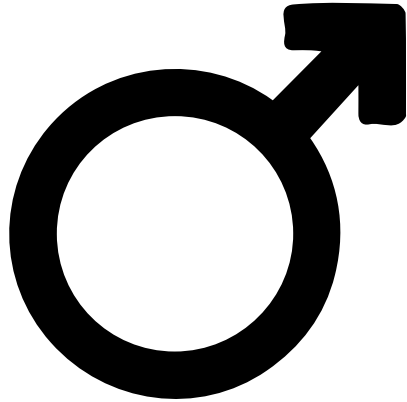


Soccer Shorts

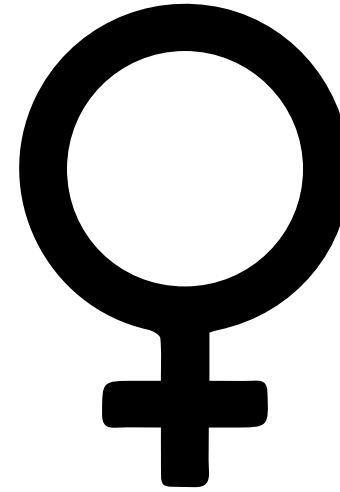
- Men's & women's cut
- 100% full vibrant colored sublimation
- Superior moisture management material
- Drawstring waistband
- Lite weight fabric
- 50+ UV Protection
- 82% Micropoly/ 18% Spandex
- 5.7 oz/yd<sup>2</sup> weight material
- Made in the U.S.A.

# CUSTOM

**MALE**



**FEMALE**



## SIZING CHART

V-NECK MEN'S SOCCER JERSEY

	SIZE	CHEST WIDTH	FRONT LENGTH	BACK LENGTH
YOUTH	YS	31"	20.5"	23.5"
	YM	35"	21.5"	24.5"
	YL	37"	24"	26.5"
	YXL	39"	25.5"	27.5"
ADULT	S	40"	27"	29.5"
	M	43"	28.5"	30.5"
	L	46.5"	29.5"	32"
	XL	50"	32.5"	33"
	2XL	53.5"	33"	34"

## SIZING CHART

V-NECK WOMEN'S SOCCER JERSEY

	SIZE	CHEST WIDTH	FRONT LENGTH	BACK LENGTH
YOUTH	YS	32"	24.5"	25.5"
	YM	34"	25"	27"
	YL	36"	25.5"	28"
ADULT	S	37.5"	27"	29"
	M	40"	27.5"	29.5"
	L	44"	29"	30.5"
	XL	47"	29.5"	32"
	2XL	50"	30.5"	33"

# CUSTOM

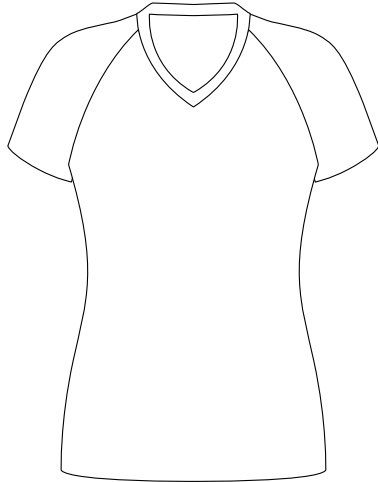
## Volleyball: Custom Design Examples



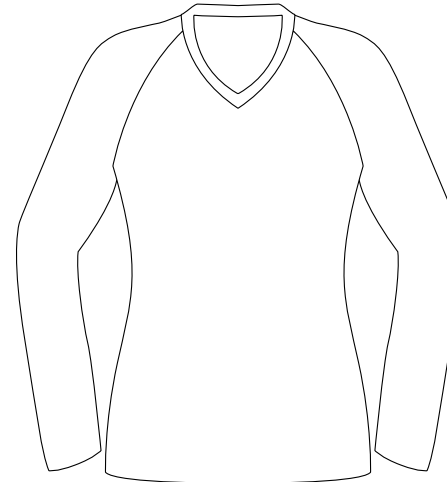
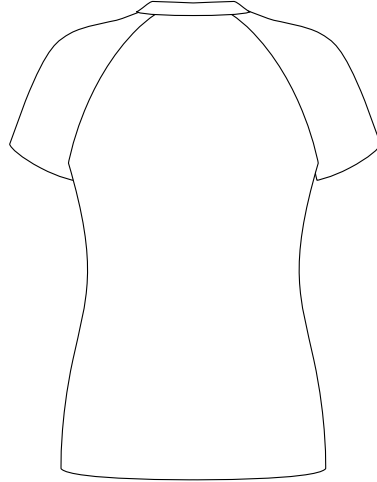


# CUSTOM

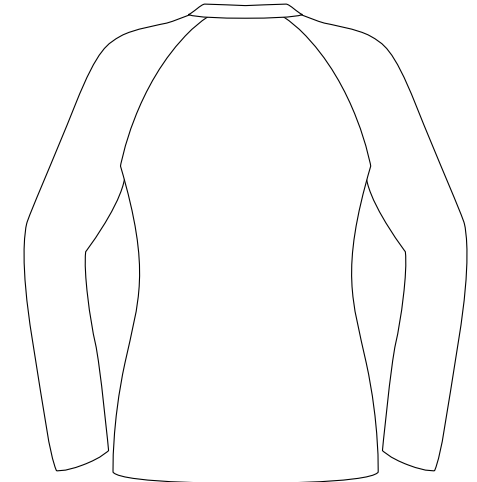
## Volleyball: Women's Jerseys



Cap Sleeve



Long Sleeve



### -sizing chart

#### V-NECK WOMEN'S VOLLEYBALL JERSEY

	SIZE	CHEST WIDTH	WAIST WIDTH	BODY LENGTH
YOUTH	YS	29"	27"	23.75"
	YM	30"	28"	24.5"
	YL	31"	29"	25.25"
ADULT	XS	32"	30"	26"
	S	33"	31"	26.75"
	M	34"	32"	27.5"
	L	36"	34"	28.25"
	XL	38"	35"	29"
	2XL	40"	36"	29.75"
	3XL	42"	37"	30.5"

- V-Neck women's cut
- 100% full vibrant colored sublimation
- Strength blend, lite weight fabric
- Moisture management material
- Snag resistant
- Raglan sleeves (Cap or Long)
- Tagless label
- 5.6 oz/yd<sup>2</sup> weight material
- 88% Micropoly/ 12% Spandex
- Made in the U.S.A.

# CUSTOM

## Activewear: Custom Design Examples



Windbreaker



Cage Jacket

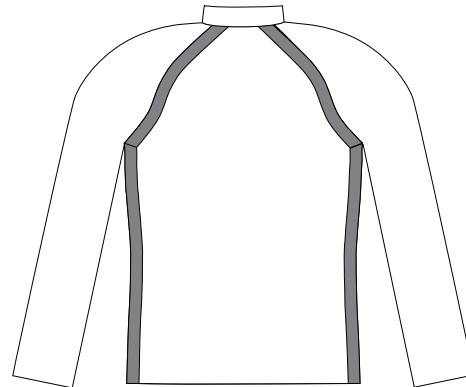


# CUSTOM

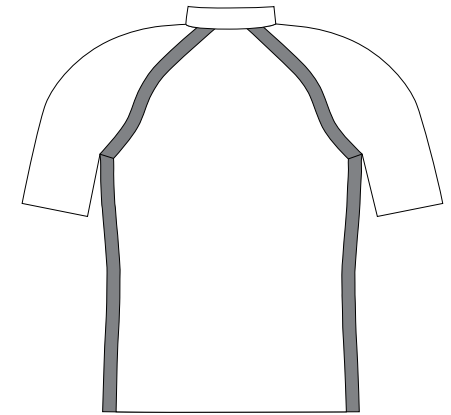
## Activewear



Windbreaker



Cage Jacket



- Unisex cut
- Fully sublimated PMF body
- 4 way stretch lycra side and back panel
- Light loose fit
- Side pockets
- 1/4 zip closure
- Elastic drawstring waist closure
- Raglan sleeves (Long)
- 100% Poly microfiber body, 6.44 oz/yd<sup>2</sup>
- 82% Nylon/ 18% Spandex, side and back insert, 5.9 oz/yd<sup>2</sup>
- Made in the U.S.A.

- Unisex cut
- Fully sublimated PMF body
- 4 way stretch lycra side and back panel
- Extremely loose, light fit
- Side pockets
- 1/4 zip closure
- Raglan sleeves (short)
- 100% Poly microfiber body, 6.44 oz/yd<sup>2</sup>
- 82% Nylon/ 18% Spandex, side and back insert, 5.9 oz/yd<sup>2</sup>
- Made in the U.S.A.

# CUSTOM

## UNISEX



### SIZING CHART

#### WINDBREAKER/CAGE JACKET

	SIZE	CHEST	BODY
YOUTH	YS	29"	23.75"
	YM	30"	24.5"
	YL	31"	25.25"
ADULT	XS	32"	26"
	S	33"	26.75"
	M	34"	27.5"
	L	36"	28.25"
	XL	38"	29"
	2XL	40"	29.75"
	3XL	42"	30.5"



# CUSTOM

## Activewear: Custom Design Examples



Quarter Zip

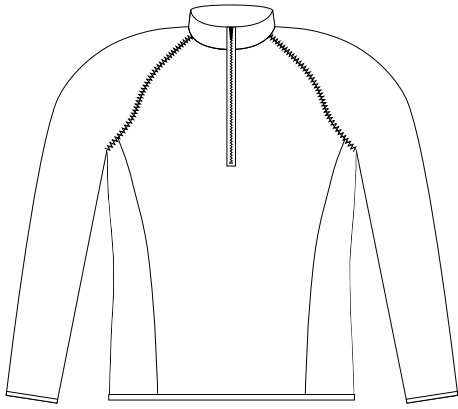


Polo

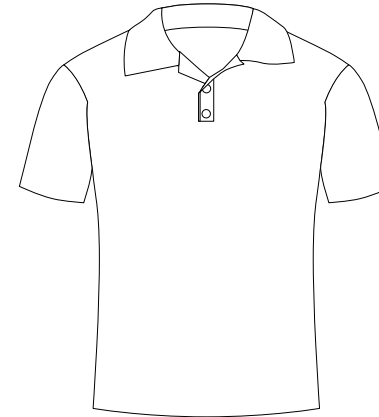
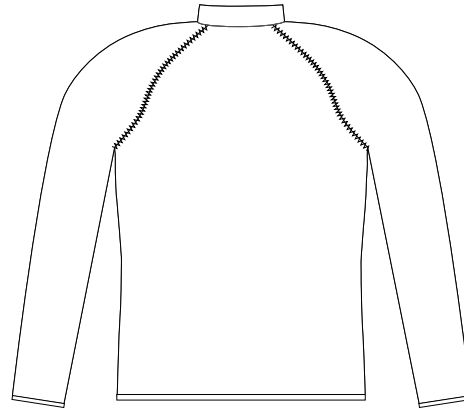


# CUSTOM

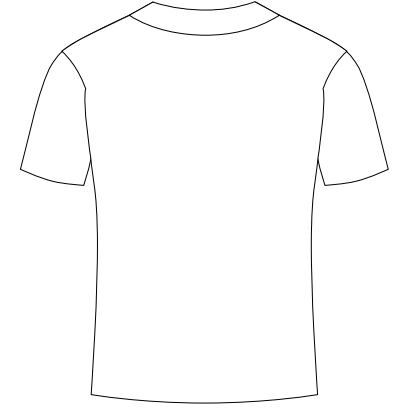
## Activewear



Quarter Zip



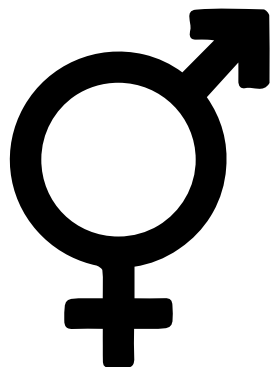
Polo Shirt



- Unisex cut
- 100% full vibrant colored sublimation
- Pin dot mesh
- Flatlock stitching
- Moisture management material
- Snag resistant
- Side pockets
- 1/4 zip closure
- Raglan sleeves (Long)
- Tagless label
- 9.7 oz/yd<sup>2</sup> weight material
- 100% Polyester
- Made in the U.S.A.

- Unisex cut
- 100% full vibrant colored sublimation
- Moisture management material
- 50+ UV protection
- 3 button closure
- Set in sleeves (Long)
- Tagless label
- Lite weight fabric
- 5.7 oz/yd<sup>2</sup> weight material
- 100% Polyester
- Made in the U.S.A.

## QUARTER ZIP



### SIZING CHART

#### QUARTER ZIP PULLOVER

SIZE	WEIGHT (LBS.)	CHEST
6XS	<30	23-28"
5XS	30-40	28-30"
4XS	40-55	29-31"
3XS	55-75	30-32"
2XS	75-95	31-32"
XS	95-115	32-34"
S	115-135	34-36"
M	135-160	38-40"
L	160-190	42-44"
XL	190-220	46-48"
2XL	220-250	50-52"
3XL	250-275	54-56"

## POLO SHIRT



### SIZING CHART

#### SUBLIMATED POLO SHIRT

SIZE	CHEST	LENGTH
S	39"	29"
M	43"	30"
L	47"	31"
XL	51"	32"
2XL	55"	33.25"
3XL	59"	34.25"

# CUSTOM

## Activewear



Pullover Hoodie



Full Zip Hoodie



## SIZING CHART

### SUBLIMATED PULLOVER/FULL ZIP HOODIE

SIZE	WEIGHT (LBS.)	CHEST WIDTH
2XS	75-95	31-32"
XS	95-115	32-34"
S	115-135	34-36"
M	135-160	38-40"
L	160-190	42-44"
XL	190-220	46-48"
2XL	220-250	50-52"
3XL	250-275	54-56"

- Unisex cut
- 100% full vibrant colored sublimation
- Brushed polyester performance fleece material
- Full hood with drawstring
- Kangaroo pouch pocket
- Pullover or Full zip option
- Set in sleeves
- 97.66 oz/yd<sup>2</sup> weight material
- 100% Polyester
- Made in the U.S.A.