

# NATHAN<sup>®</sup>

SPRING / SUMMER 2023

UPDATED 3/31/23

SCAN ME



23 NATHAN SS CATALOG



RUNNING ESSENTIALS - HYDRATION - APPAREL

# TABLE OF CONTENTS

---

## HYDRATION

VESTS & PACKS . . . . .	2
BELTS . . . . .	16
HANDHELDS . . . . .	18

## STORAGE

STORAGE BELTS . . . . .	27
PHONE CARRIERS . . . . .	30

## SAFETY

LIGHTING . . . . .	33
ALARMS . . . . .	39
REFLECTIVE . . . . .	40
HYPERNIGHT ACCESSORIES . . . . .	42

## GEAR

SUNGLASSES . . . . .	45
SOCKS . . . . .	46
RUN LACES . . . . .	47
POWER WASH . . . . .	48
RUNCOOL . . . . .	48
HYDRATION ACCESSORIES . . . . .	49

## APPAREL

MEN'S RACE DAY . . . . .	54
MEN'S TRAINING . . . . .	58
MEN'S 365 COMFORT . . . . .	66
WOMEN'S RACE DAY . . . . .	70
WOMEN'S TRAINING . . . . .	76
WOMEN'S 365 COMFORT . . . . .	82

## ASSORTMENT GUIDE

MEN'S ASSORTMENTS . . . . .	86
WOMEN'S ASSORTMENTS . . . . .	90

All Nathan hydration gear is

**BPA-FREE**

 NEW FOR SS23

 FITS MOST SMARTPHONES

 INSULATED ITEM  
KEEPS COOL 20% LONGER

 WOMEN'S SPECIFIC FIT



STORAGE





## The Adjustable Fit Zipster 2.0

MSRP: \$35

The Adjustable Fit Zipster is the only running belt you need. Hold your essentials securely close to your waist and without any bounce. The newly updated adjustable buckle allows for easier adjustment and an improved fit.



### BLACK

OSFM NS30530-00001-OSFM



### MARINE BLUE

OSFM NS30530-60009-OSFM



### GRAVITY GREY

OSFM NS30530-80007-OSFM



## NEW! Quick Release Buckle

- New quick release buckle ensures secure, no bounce fit
- Zippered, weather-resistant pocket and two quick-stash pockets provide a comfortable solution for carrying essentials

- Lightweight stretch mesh comfortably form-fits around your waist
- Adjustable buckle fits to your body
- Fits most large-format smartphones

## The Zipster Lite

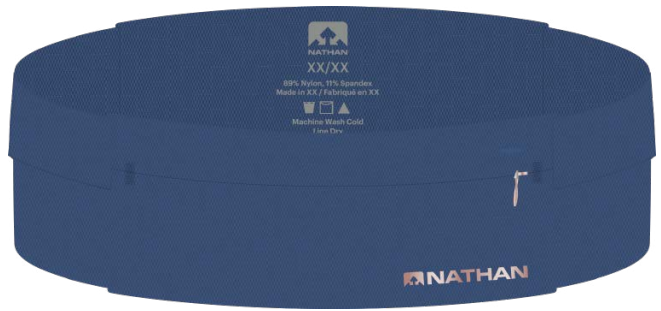
MSRP: \$35

Our popular low-profile Zipster training belt is lighter than ever. Two zippered, weather-resistant pockets (four pockets total) provide an incredibly comfortable solution for carrying your essentials in the most unobtrusive way possible.



### BLACK

XXS	NS7703-0015-29	M	NS7703-0015-33
XS	NS7703-0015-31	L	NS7703-0015-34
S	NS7703-0015-32	XL	NS7703-0015-35



### TRUE NAVY / ROSE GOLD

XXS	NS7703-0576-29	M	NS7703-0576-33
XS	NS7703-0576-31	L	NS7703-0576-34
S	NS7703-0576-32	XL	NS7703-0576-35

- Two zippered, weather-resistant pockets and two quick-stash pockets provide an incredibly comfortable solution for carrying your essentials in the most unobtrusive way possible

- Lightweight stretch mesh comfortably form-fits around your waist
- Fits most large-format smartphones



## Marathon Pak 2.0

MSRP: \$35

Get ready for your next training run or race with this updated lightweight and versatile training pack. Designed for any distance, the Marathon Pak 2.0 now has an external stow for stashing extra layers, nutrition loops, and race number attachments. No need to look elsewhere - this pack has all the features you need for your race.



### BLACK

OSFM NS30550-00001-OSFM



### PERI BLUE/ESTATE BLUE

OSFM NS30550-60282-OSFM

- External stow away loop through design offers additional storage for shirt/towel
- Larger zippered pocket fits most smartphones
- Race-ready features include gel loops and trash stash pocket
- Reflective detailing for visibility in lowlight conditions
- Storage Capacity: 0.5L / 31 Cu. In
- Weight: 3.7oz / 105g

## 5K Pak

MSRP: \$30

Ultra-lightweight neoprene belt includes keepers to reduce excess slack. Stash your essentials in two external, zippered storage pockets. Includes reflective hits to help you stay seen.



### MAGENTA / ESTATE BLUE

OSFM NS4808-70052-OSFM



### BLACK

OSFM NS4808-0015-00

- Large zippered pocket with phone divider, compatible with most large-format smartphones
- Front zippered stash pocket fit your gel paks, keys, cash, & credit cards.
- Bounce-free while running. You'll forget you have it on!
- Features enhanced visibility and comfort with 3M™ Scotchlite™ reflective detail for low light visibility conditions
- Long-range performance through ultra-lightweight neoprene construction. Ideal for joggers, runners, and training for marathons
- One size fits most - Adjustable strap to fit waists from 26" to 44"
- Storage Capacity: 0.34L / 20.5 Cu. In
- Weight: 3.6oz / 102 g

## Race Number Nutrition Waistbelt

MSRP: \$18

A great alternative to pinning your bib number to your shirt, this lightweight belt offers easy on/off for runners and triathletes and helps maintain the integrity of your performance gear.



### CHARCOAL / BLACK

OSFM NS10080-80017-OSFM

- 3 elastic nutrition loops for gel
- 3 race number attachments
- Weight: 1.4oz / 40g





## Mirage Pak Plus

 MSRP: \$30

Designed for runs from every day to race day, the Mirage Pak Plus adjustable belt carries your bare essentials in a compact and sleek running pak and includes race number attachments.



### BLACK / REFLECTIVE SILVER

OSFM NS10060-00010-OSFM

- Ultra-soft brushed interior protects smart phones
- Fully-adjustable, enhanced, elasticized limited-stretch belt
- Reflective detailing for greater visibility
- One expandable phone-sized pocket
- One expandable small stash pocket for cards, cash, keys, or nutrition
- Race number attachments for essential race day needs
- Storage Capacity: 0.5L / 21 Cu. In

## Mirage Pak

 MSRP: \$25

Compact and sleek running pak for those who need to carry the bare essentials – but don't want to feel them.



### ELECTRIC BLUE

OSFM NS4807-0078-00



### BLUE LIGHT / DANUBE

OSFM NS4807-0040-00



### PINK GLO

OSFM NS4807-0166-00



### BLACK

OSFM NS4807-0015-00

- Ultra-soft brushed interior protects smart phones
- Fully-adjustable, enhanced, elasticized limited-stretch belt
- 3M™ reflective detailing for greater visibility
- Internal stash pocket keeps money, credit cards, and ID in place
- Internal key ring clip
- Storage Capacity: 0.35L / 21 Cu. In



## SonicStorm

 MSRP: \$40

Designed to conquer the elements, our largest universal smartphone carrier fits your phone and other running essentials.



### BLACK / SAFETY YELLOW

OSFM NS4942-0028-00

- Fits most large-format smartphones with low-profile cases
- Performance fabric provides a comfortable and secure fit
- Water resistant zipper and performance fabrics protects against rain
- Internal storage area plus stash pocket holds running essentials
- Cord management system organizes wire slack
- Reflective detailing
- Weight: 2.05oz / 58g
- Dimensions: 7.2"H x 15.4"W
- Pocket: 6.6"H x 3.5"W x 0.78"D
- Arm Band Size: One Size Fits Most (9" - 15")

## StrideSport

 MSRP: \$30

Securely haul your large-format smartphone with this durable and comfortable smartphone carrier that allows you to access your phone, music, and apps while on the run.



### BLACK

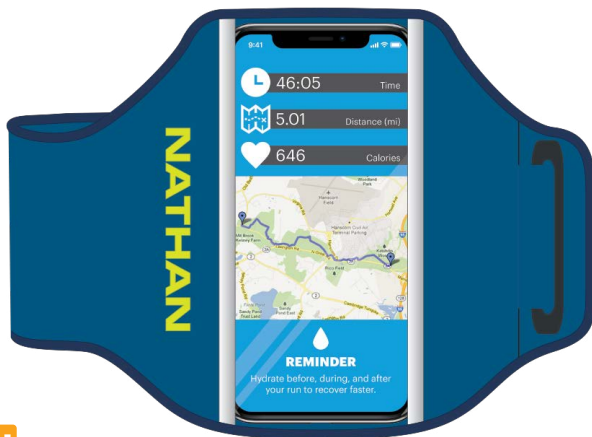
OSFM NS4947-0015-00

- Sized to fit most smartphones with low-profile cases
- Performance fabrics provides comfort and a secure fit against arm
- Access phone, music, and apps via the see-thru window
- Cord management system organizes wire slack
- Reflective detailing
- Weight: 1.5oz / 43g
- Dimensions: 6.3"H x 14.6"W
- Pocket: 6.5"H x 3.4"W
- Arm Band Size: One Size Fits Most (9" - 15")

## Super 5K

 MSRP: \$25

Universal armband offers a lightweight way to carry music on your arm.



### DEEP BLUE / SAFETY YELLOW

OSFM NS4923-60270-OSFM

- Ultra-lightweight, water-resistant neoprene keeps many types of phones or music devices protected
- Large slip in pocket with phone divider, compatible with most large-format smartphones
- Reflective detailing



### BLACK / YELLOW

OSFM NS4923-0031-00

- 3M™ Scotchlite™ reflective detail for visibility under low light conditions
- Comfort-fit adjustable belt for smooth feel on skin
- Fits most smartphones

- Weight: 1.6oz / 45.4g
- Dimensions: 6.5"H x 17"W
- Pocket: 6"H x 3"W
- Arm Band Size: One Size Fits Most (9" - 15")



## Vista Handheld Phone Carrier

 MSRP: \$30

Grip-free design keeps your phone within reach and easily accessible.



### BLACK

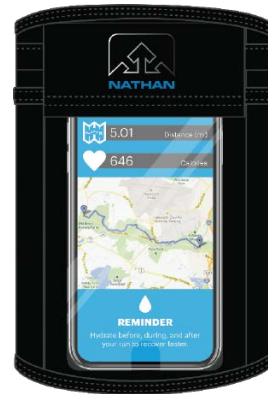
OSFM NS4918-0015-00

- Slip in pocket with see-through conductive touchscreen technology keeps your phone and other running essentials protected, while allowing you to see your splits, playlist, and incoming messages
- Fully-adjustable hand strap with chafe-free thumb hole enables grip-free running
- Headphone port located at the bottom to accommodate audio jack
- Fits most smartphones
- Reflective detailing
- Weight: 1.23oz / 34.8g
- Dimensions: 8"H x 5"W
- Handstrap Size: One Size Fits Most (4" - 6")

## Vista Arm Sleeve Phone Carrier

 MSRP: \$35

This versatile phone holder keeps your phone, music, and tracking all in view.



### BLACK

S / M NS4919-0015-10

L / XL NS4919-0015-30

- See-through conductive touchscreen technology keeps your phone and other running essentials protected, while allowing you to see your splits, playlist, and incoming messages
- Ergonomic, adjustable design easily slips on (to your arm) and eliminates bounce
- Fits most smartphones
- Reflective detailing
- Weight: 1.09oz / 31g
- Dimensions: 8"H x 5"W





SAFETY



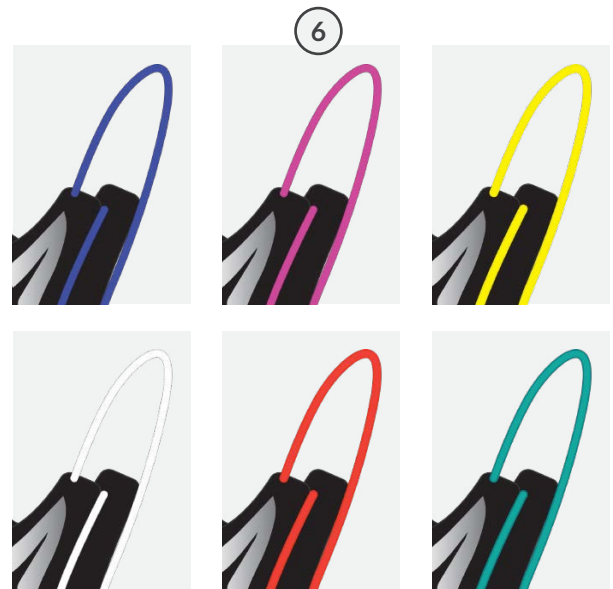
# HyperNight Laser Light Vest 10Lu

MSRP: \$60

Our ultra lightweight light up vest features 8 different light modes that allow you to be seen by your fellow runners, outdoor adventurers and drivers.



1. Fiber optic light tube with 8 different settings that provides 360 degree visibility
2. One size fits most, with adjustable tubular lights
3. Reflective details for added safety
4. Easy single-push on and off button
5. Rechargeable power supply
6. Choose your color with seven different settings - yellow, white, pink, red, teal, green, and blue



## BLACK

OSFM NS60240-00001-OSFM

- Ultra lightweight construction with front snap closure
- Weather-resistant
- Weight: 3.85oz / 109g
- 10 lumen fiber optic tube light
- Li-Ion USB rechargeable battery
- Strobe mode - all colors flashing
- Seven steady on color options - Blue, Green, Red, Teal, Yellow, White, Pink
- 8 hours (blue), 5.3 hours (green), 3 hours (red, teal, strobe), 2 hours (yellow, white, pink)



## Terra Fire 400RX Runner's Hand Torch 415Lu

MSRP: \$60

This grip-free, rechargeable, running-specific flashlight cranks out over 400 lumens of crisp, clean light, while the integrated 24-degree downward projection angle assures the beam will pick up any cracked sidewalks and rocks that might get in your way.



### RED DAHLIA / CASTLE ROCK

NS5111-0473-00

- Grip-free design with adjustable hand strap fits your hand
- Li-Ion rechargeable battery via enhanced Micro USB port
- 12 hours (low), 6 hours (medium), 5 hours (high)
- IPX4 Weather-resistant
- 2 LEDs - Front: Cree White LED (400+ Max Lumens), Back: Red LED (8 Lumens)

## Terra Fire 300R Runner's Hand Torch 310Lu

MSRP: \$45

From walking your dog at night to running your favorite dark trails, the Terra Fire 300 produces a bright light to lead the way. The grip-free design with adjustable hand strap, allows you to comfortably carry in either hand. The built-in whistle allows you to easily alert other runners or to scare off any coyotes that could cross your path.



### TANGERINE TANGO / VAPOR BLUE

NS5110-0472-00

- Grip-free design with adjustable hand strap fits your hand
- 2x AA batteries
- Safety whistle folds-out when you need it
- 40 hours (low), 24 hours (medium), 9 hours (high)
- IPX4 Weather-resistant
- LED Front: Cree White LED (300+ Max Lumens)

## Zephyr Trail 200R Runner's Hand Torch 202Lu

MSRP: \$35

Our trail-friendly Zephyr kicks out over 200 lumens of crisp, clear light. Use the 120 decibel fold-out safety whistle to alert other runners of your presence.



### BLACK / SAFETY YELLOW

NS5087-0028-00

- Grip-free design with adjustable hand strap fits your hand
- 2x AA batteries
- Safety whistle flips out when you need it
- 40 hours (low), 24 hours (medium), 9 hours (high)
- IPX4 Weather-resistant
- LED Front: Cree White LED (200+ Max Lumens)



## Neutron Fire RX Runner's Headlamp 200Lu

MSRP: \$55

Thanks to a powerful USB-rechargeable battery, the lightweight Neutron RX produces 200 lumens of crisp light on roads, trails, paths, and everywhere in between. It also features red, green, or blue strobe strips up front, and as an added bonus, the entire head strap is made of reflective material!



### BLACK

NS5098-0015-00

- 200 Lumens LED spotlight
- Side strobes provide RGB Light - Red, Green, and Blue LED options
- Strap provides 360 degrees of reflective visibility
- Li-Ion USB rechargeable battery
- Burn Time: 25+ Hours
- IPX4 Weather-resistant
- Adjustable headlamp angle
- 33 Lumens (Low), 100 Lumens (Med), 163 Lumens (Hi), 200 Lumens (Boost), 80 lumens (Strobe)

## Luna Fire 250RX Chest / Waist Light 250Lu

MSRP: \$45

Features a comfortable strap for secure placement on your chest or waist. You can remove the light and clip onto your running shorts, jacket, hydration pack or anything else you have on while you run.



### BLUE NIGHTS

NS5062-0409-00

- 250 Lumens LED spotlight
- Includes a comfortable chest / waist strap
- Removable light clips on anywhere
- Li-Ion USB rechargeable battery
- Burn Time: 25+ Hours
- IPX4 Weather-resistant
- Adjustable beam angle
- 33 Lumens (Low), 100 Lumens (Med), 200 Lumens (Hi), 250 Lumens (Boost), 100 Lumens (Strobe)

## Neutron Fire R Runner's Headlamp 115Lu

MSRP: \$40

Bring added safety and color to your night run with the lightweight and powerful Neutron Fire. The primary LED kicks out a crisp 115 lumen spotlight, while the two side strobes offer RGB Light - red, green, or blue LED's for added visibility.



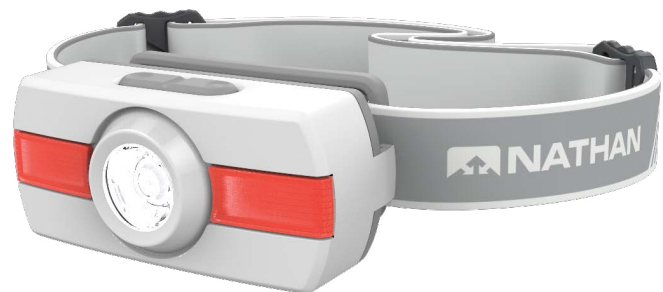
### BLACK

NS5094-0015-00

- 115 Lumens LED spotlight
- Side strobes provide RGB Light - Red, Green, and Blue LED options
- Strap provides 360 degrees of reflective visibility
- 2x AAA batteries
- Burn Time: 30+ hours
- IPX4 Weather-resistant

### WHITE

NS5094-0222-00



- Adjustable headlamp angle
- 25 Lumens (Low), 45 Lumens (Med), 90 Lumens (High), 115 Lumens (Boost), 45 Lumens (Strobe)



## HyperBrite RX 16+Lu

MSRP: \$22

Small and lightweight, yet extremely powerful, this clip-on strobe features varying LED light modes. A long lasting battery that you can recharge with a micro USB makes this a must have.



### BLUE JEWEL

NS5115-0589-00

- 4 Bright LEDs cast 16+ Lumens
- Li-Ion Micro-USB rechargeable battery
- IPX4 Weather-resistant
- Clips anywhere
- 4+ Hours (Steady On), 6+ Hours (Strobe), 12+ Hours (Alternating), 30+ Hours (Chain)

## HyperBrite Mini 2 Pack 8Lu

MSRP: \$20

Compact and super lightweight, this two-pack of LED clip-on strobes ensures drivers will see you both coming and going. Designed for easy use, the pair clips anywhere securely.



### SILVER / CHILI PEPPER WHITE / GOLD

NS5060-0400-00

- 2 LEDs - 8 Max Lumens
- 1x 3V Lithium 2032 battery
- IPX4 Weather-resistant
- Compact and lightweight clip-on lights
- 18+ Hours (Steady On), 110 Hours (Strobe)

## HyperBrite Orb Strobe 16+Lu

MSRP: \$16

It's imperative to be seen when running at night, and the HyperBrite Orb outshines them all! Small and lightweight, yet extremely powerful, this clip-on strobe features varying LED light modes that output up to 16 lumens of eye-catching, attention-grabbing light.



### VIBRANT YELLOW / WHITE

NS5112-0474-00

- 4 Bright LEDs cast 16+ Lumens
- 2 x 3V Lithium 2032 batteries
- IPX4 Weather-resistant
- Clips anywhere



### CHILI PEPPER / WHITE

NS5112-0475-00

- 4+ Hours (Steady On), 6+ Hours (Strobe), 12+ Hours (Alternating), 30+ Hours (Chain)

## StrobeLight 8Lu

MSRP: \$12

Our StrobeLights will let you be seen in a whole new light. Small, lightweight, and LED bright, these colorful strobes clip on anywhere, so drivers – and other runners – can see you everywhere. And if one is good, two are better!



**LOLLIPOP /  
RED DAHLIA**  
NS5113-0476-00

**VIBRANT ORANGE /  
TANGERINE TANGO**  
NS5113-0477-00

**LIME PUNCH /  
CLASSIC GREEN**  
NS5113-0478-00

**BLUE CORNFLOWER**  
NS5113-0503-00

- 3 Bright LEDs cast 8+ Lumens
- 2x 3V Lithium 2032 batteries

- IPX4 Weather-resistant
- Clips anywhere

- 57 Hours (Steady On), 110 Hours (Strobe)

## StrobeLight Candy Jar 8Lu

MSRP: \$576

An assortment of 48 StrobeLights in various colors, including Lollipop, Vibrant Orange, Lime Punch and Blue Cornflower.



**ASSORTED - 48CT**  
NS5175-0004-00

## StrobeLight 2 Pack 8Lu

MSRP: \$20

The Strobe Light 2-Pack allows to stay safe and stay seen, from both the front and the back.



**LOLLIPOP /  
RED DAHLIA**      **LIME PUNCH /  
CLASSIC GREEN**  
NS5114-0479-00

- 3 Bright LEDs cast 8+ Lumens
- 2x 3V Lithium 2032 batteries
- IPX4 Weather-resistant

- Clips anywhere
- 57 Hours (Steady On), 110 Hours (Strobe)



## LightBender RX 6Lu

MSRP: \$30

Three colors are better than one! Change colors as you like on this lightweight, comfortable, and rechargeable armband, switching between red, green, and blue.



### SAFETY YELLOW

NS5084-0186-00

- Lightweight and comfortable
- Switch between 3 color modes: Red, Green, and Blue
- Multi-settings for blinking or steady stream lights
- Adjustable chafe-free armband
- IPX4 Weather-resistant
- Li-Ion USB rechargeable battery
- 8 hours (steady on), 16 hours (flashing)



## LightBender Mini R 6Lu

MSRP: \$20

The smaller design of the LightBender Mini R makes it the ideal lighted armband for runners that don't sport boulders for biceps. LED color options mean this quick-clip band will up your running fashion game, whether you choose to strap it to your arm or ankle.



### BLUE NIGHTS / WHITE

NS5061-0401-00

- Shorter strap for runners with smaller arms
- Switch between 3 color modes: Red, Green, and Blue
- Multi-settings for blinking or steady state lights
- Clips quickly, and securely attaches to arm or ankle
- IPX4 Weather-resistant
- 2x CR2032 Batteries
- Max burn time 67 hours

## SaferRun Ripcord Siren + Strobe Light 115db + 65Lu

MSRP: \$30

In case of emergency, a quick pull of the rip cord triggers a 115 dB alarm and starts the LED strobe light, alerting passers-by and discouraging potential assailants. Audible from over 600ft, and as loud as an ambulance siren, this tiny alarm system can alert others in case of an incident. Attach to any article of clothing or gear before your run, and pull if you feel uncomfortable or in case of emergency to alert others of your distress. Turn off and use again as needed.



### RED DAHLIA

NS8007-0586-00

- Quick-Pull tab for easy one-handed use will sound the alarm and start the LED strobe light
- +115 dB - As loud as an ambulance and audible up to 600ft
- Reusable and easy to use - test it, try it, and learn how to use it before you ever need it
- 2x AAA batteries (not included)

## SaferRun Ripcord Siren Personal Alarm 120db

MSRP: \$20

In case of emergency, a quick pull of the rip cord triggers a 120 dB alarm, alerting passers-by and discouraging potential assailants. Audible from over 600ft and as loud as an ambulance siren, this tiny alarm system can alert others in case of an incident. Attach to any article of clothing or gear before your run, and pull if you feel uncomfortable or in case of emergency to alert others of your distress. Turn off and use again as needed.



### RED DAHLIA

NS8000-0586-00

- Quick-Pull tab for easy one-handed use
- +120 dB - As loud as an ambulance and audible up to 600ft
- Reusable and easy to use - test it, try it, and learn how to use it before you ever need it
- 4x LR41 Batteries

**TIME MAGAZINE**  
**INVENTION OF THE YEAR - WELLNESS CATEGORY**



When ordered in multiples of 12, countertop display is included at no charge.



## Streak

MSRP: \$30

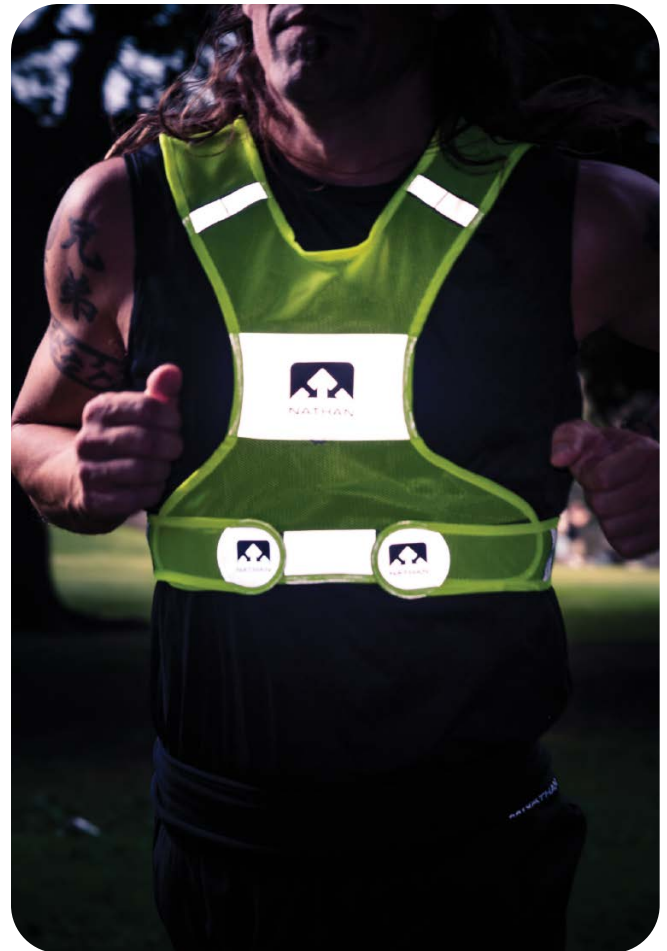
An ultra-lightweight and sleek design, 1,200-foot (366-meter) visibility, and 360-degree reflectivity optimize performance and safety.



### HI-VIZ YELLOW

L / XL NS2017-0119-30  
S / M NS2027-0119-10

- Anatomical shape offers full range of motion without interrupting arm swing
- Adjustable fit with hook and loop-closure tabs
- Attachment points for clip-on lights
- Weight: 1.6oz / 45.4g



## Vibe Reflective Vest

MSRP: \$25

Our minimalist, run-comfortable, easy-to-fit, and super-reflective vest, literally has visibility designed into it. The front straps provide a bright V-shaped reflection when cars' headlights hit them.



### VIBRANT YELLOW

OSFM NS2066-0467-00

- Provides 360 degrees of reflectivity for visibility in low-light conditions
- Body-hugging elastic design offers full range of motion without interrupting arm swing
- Easily-adjustable shoulder straps and waist belt for a customized fit for all body types



### CORNFLOWER BLUE

OSFM NS2066-0471-00

- EN 1150 and EN-13356-2001 compliant
- Weight: 2.9oz / 82g

## Reflex Bands Pair

MSRP: \$10

Slap bracelets will never be out of style! Especially when they're as fun and stylish as our refreshed – and extremely reflective - Reflex bands. Two bands per pack.



### YELLOW - INSPIRED GRAPHICS

NS1014-0227-00

- Two bands per pack
- Keep these in your kit as a simple way to add reflectivity to your run
- Slap 'em on your wrist or ankle and stand out at night



## Reflective Sticker 2-Pack

MSRP: \$12

Who says that safety can't be fun? These super-bright, hi-gloss, easily-applied reflective stickers provide runners, walkers, and cyclists with creative ways to stick on some added reflectivity!



### HI-VIZ YELLOW - ALIENS

NS2068-0119-00

- Includes two sheets per pack
- Stash these in your car, if you forget reflective gear, put on a couple stickers
- Fun graphics can be placed on your water bottle, your gear, or yourself

## Ankleband Pair

MSRP: \$16

Our Reflective Anklebands are lined with soft fabric for extra comfort during your run. Instantly add safety to any activity with this handy, reflective essential. Use to increase visibility at night. Comes in a pair.



### HI-VIZ YELLOW

NS2020-0119-00

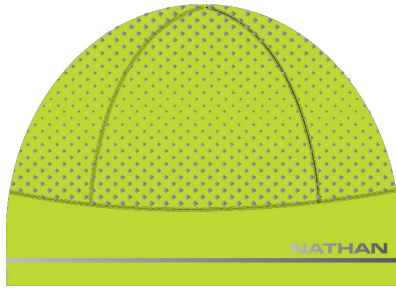
- Includes two ankle bands
- Compact and easy to pack
- Stays in place without slipping or chafing
- Adds reflectivity with ease
- Provides 360 degrees of reflectivity and visibility
- Be seen in any weather condition at day or night
- Ideal for running, cycling, walking, jogging, construction or traffic work where high vis clothing is required



## HyperNight Reflective Ponytail Beanie

MSRP: \$35

Features an opening in back to pull through a ponytail for maximum warmth and comfort. An expanded reflective geometric print graphic provides 360-degree visibility in low light conditions.



### HI VIS YELLOW / GEO PRINT

OSFM NS10420-40044-OSFM



### BLACK / GEO PRINT

OSFM NS10420-00180-OSFM

- Soft stretchy tech knit fabric, smooth face with brushed interior to hold in the warmth. Wicks moisture away and dries quickly to keep you warm on colder days
- Strategically placed reflective geo print graphic helps you stay visible during early morning and evening runs and outdoor adventures
- Back opening for ponytail to pull through and stretchy fabric that allows for one size fits most

## HyperNight Reflective Beanie

MSRP: \$30

Designed for cold weather runners and adventurers. Lightweight stretch fleece fabric with reflective geometric print graphic provides 360-degree visibility in low light conditions.



### HI VIS YELLOW / GEO PRINT

OSFM NS10400-40044-OSFM



### BLACK / GEO PRINT

OSFM NS10400-00180-OSFM

- Soft stretchy tech knit fabric, smooth face with brushed interior to hold in the warmth. Wicks moisture away and dries quickly to keep you warm on colder days
- Strategically placed reflective geo print graphic helps you stay visible during early morning and evening runs and outdoor adventures
- Stretchy fabric allows for one size fits most

## HyperNight Reflective Headband

MSRP: \$25

Provides warmth and 360-degrees of reflectivity without overheating. Designed for cold weather runners and adventurers. Made of lightweight stretch fleece fabric with reflective geometric print graphic provides 360-degree visibility in low light conditions.



### HI VIS YELLOW / GEO PRINT

OSFM NS10440-40044-OSFM



### BLACK / GEO PRINT

OSFM NS10440-00180-OSFM

- Soft stretchy tech knit fabric, smooth face with brushed interior to hold in the warmth. Wicks moisture away and dries quickly to keep you warm on colder days
- Strategically placed reflective geo print graphic helps you stay visible during early morning and evening runs and outdoor adventures
- Stretchy fabric allows for one size fits most

## HyperNight Reflective Convertible Mitt

MSRP: \$35

Designed for the coldest of runs and outdoor adventures, these lightweight stretch convertible mitts with an eye-catching reflective geometric print pattern are as comfy as they are stylish. The convertible feature allows wearer additional dexterity when the mitt is pulled back to glove. Reflectivity feature is perfect for early morning or evening runs.



### BLACK / GEO PRINT

XS NS10780-00180-XS  
S NS10780-00180-S  
M NS10780-00180-M

L NS10780-00180-L  
XL NS10780-00180-XL

### HI VIS YELLOW / GEO PRINT

XS NS10780-40044-XS  
S NS10780-40044-S  
M NS10780-40044-M

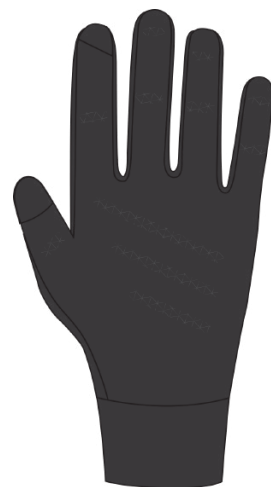
L NS10780-40044-L  
XL NS10780-40044-XL

- Conductive TruTouch™ technology on "texting" (index and thumb) fingers allows for smartphone operation with gloves on so you can answer a call or take a picture
- Convertible feature provides added warmth and allows wearer to pull back mitts for freedom of movement
- Nose wipe chamois on thumbs, while keeping hands warm
- Stretch jersey fabric for dexterity
- Back of hand pocket easily holds strobe light
- Unique geo print graphic detail on exterior hands provides greater visibility when running early mornings or evenings

## HyperNight Reflective Glove

MSRP: \$30

Designed for runners and outdoor adventurers, these lightweight stretch gloves with an eye-catching reflective geometric print pattern are as comfy as they are stylish. Ideal for cold weather and provide a reflectivity feature that is perfect when running early mornings or evenings.



### BLACK / GEO PRINT

XS NS10460-00180-XS  
S NS10460-00180-S  
M NS10460-00180-M

L NS10460-00180-L  
XL NS10460-00180-XL

### HI VIS YELLOW / GEO PRINT

XS NS10460-40044-XS  
S NS10460-40044-S  
M NS10460-40044-M

L NS10460-40044-L  
XL NS10460-40044-XL

- Conductive TruTouch™ technology on "texting" (index and thumb) fingers allows for smartphone operation with gloves on so you can answer a call or take a picture
- Nose wipe chamois on thumbs, while keeping hands warm
- Stretch jersey fabric for dexterity
- Back of hand pocket easily holds strobe light
- Unique geo print graphic detail on exterior hands provides greater visibility when running early mornings or evenings



GEAR



## Summit Polarized Sunglasses

MSRP: \$60

Premium TR90 frames stay in place throughout any activity. Polycarbonate polarized lenses provide optical quality clarity, and 100% UV Protection.



### CLEAR

NS10300-80001-OSFM



### GREY

NS10320-80002-OSFM

- Soft-feel grip coating on frames, plus rubber grips on nose and temples ensure a very secure fit
- TR90 Frames are lightweight and impact resistant; resilient to damage and withstands high and low temperatures
- Polycarbonate Polarized Lenses with 100% UV Protection and Meets ANSI and FDA impact standards
- Prescription Ready (RX lenses compatible)
- Width: Medium/Wide
- Nathan printed drawstring pouch included

## Sunrise Polarized Sunglasses

MSRP: \$60

Premium TR90 frames stay in place throughout any activity. Polycarbonate polarized lenses provide optical quality clarity, and 100% UV Protection.



### TORTOISE

NS10280-10011-OSFM

- Soft-feel grip coating on frames, plus rubber grips on temples ensure a secure fit
- TR90 Frames are lightweight and impact resistant; resilient to damage and withstands high and low temperatures
- Polycarbonate Polarized Lenses with 100% UV Protection and Meets ANSI and FDA impact standards
- Prescription Ready (RX lenses compatible)
- Width: Medium/Wide
- Nathan printed drawstring pouch included

## Adventure Polarized Sunglasses

MSRP: \$60

Premium TR90 frames stay in place throughout any activity. Polycarbonate polarized lenses provide optical quality clarity, and 100% UV Protection.



### BLACK

NS10340-00001-OSFM

- Soft-feel grip coating on frames, plus rubber grips on nose ensures a secure fit
- TR90 Frames are lightweight and impact resistant; resilient to damage and withstands high and low temperatures
- Polycarbonate Polarized Lenses with 100% UV Protection and Meets ANSI and FDA impact standards
- Prescription Ready (RX lenses compatible)
- Width: Medium/Wide
- Nathan printed drawstring pouch included



## RETAIL DISPLAY

NS90610-90000-OSFA

- Dimensions: 16.4" w x 16" h x 6.5" d
- Unit capacity: 20 units



## Speed Tab Low Cut Socks

MSRP: \$15

This low cut sock is ready to take on the miles. It features speed tabs on front and back of the ankle to reduce chafing and blisters and is anatomically fitted to cushion your foot from impact.



**N**  
**BLACK**

S NS10580-00001-S  
M NS10580-00001-M  
L NS10580-00001-L



**N**  
**BRIGHT LIME**

S NS10580-50119-S  
M NS10580-50119-M  
L NS10580-50119-L



**N**  
**PEACOCK**

S NS10580-60135-S  
M NS10580-60135-M  
L NS10580-60135-L



**N**  
**WHITE**

S NS10580-90002-S  
M NS10580-90002-M  
L NS10580-90002-L

## Speed Tab Low Cut Socks Printed

MSRP: \$16



**N**  
**PLUM**

S NS10640-70030-S  
M NS10640-70030-M  
L NS10640-70030-L



**N**  
**MONUMENT GREY**

S NS10640-80128-S  
M NS10640-80128-M  
L NS10640-80128-L



**N**  
**DESERT SUN**

S NS10600-30073-S  
M NS10600-30073-M  
L NS10600-30073-L



**N**  
**PARK GREEN**

S NS10600-50127-S  
M NS10600-50127-M  
L NS10600-50127-L



**N**  
**ORANGE TACO**

S NS10620-30115-S  
M NS10620-30115-M  
L NS10620-30115-L



**N**  
**BRIGHT TEAL BEER**

S NS10620-60223-S  
M NS10620-60223-M  
L NS10620-60223-L



**N**  
**VAPOR BLUE COFFEE**

S NS10620-60225-S  
M NS10620-60225-M  
L NS10620-60225-L

Men's Shoe	Women's Shoe
<b>S</b>	
3 - 5.5	4 - 6.5
<b>M</b>	
6 - 8.5	7 - 9.5
<b>L</b>	
9 - 13	10 - 14

- Speed tabs protect the front and back of the ankle to reduce chafing and blisters
- Ribbed ankle keeps your socks in place





- Cushioned heel and toe gives you maximum comfort and prevents blisters
- Arch support targeted underfoot compression keeps your foot from cramping

- Anatomically designed left and right specific socks provide a better fit
- Open knit ventilation allows for breathability and helps to keep your feet dry

# Knee High Compression Socks

MSRP: \$45

New Knee High Compression Socks are designed for longer runs and recovery. This sock features graduated compression, cushioned heel and toe, arch support and a double Y seam for the best performance and comfort.






			
<b>N</b>	<b>N</b>	<b>N</b>	<b>N</b>
<b>BLACK</b>	<b>MONUMENT GREY</b>	<b>DESERT SUN</b>	<b>PARK GREEN</b>
S NS10660-00001-S M NS10660-00001-M L NS10660-00001-L	S NS10660-80128-S M NS10660-80128-M L NS10660-80128-L	S NS10680-30073-S M NS10680-30073-M L NS10680-30073-L	S NS10680-50127-S M NS10680-50127-M L NS10680-50127-L

- Graduated compression 30-20mmhg, encourages blood flow
- Ribbed top opening keeps your socks in place
- Cushioned heel and toe give you maximum comfort and prevents blisters
- Arch support targeted underfoot compression keeps your foot from cramping
- Anatomically designed left and right specific, provides a better fit
- Open knit ventilation allows for breathability and helps to keep your feet and calves dry

# Reflective Run Laces

MSRP: \$10

Be seen and add color to your kicks with these reflective performance laces.

				
<b>BLACK</b> NS1171-0015-00	<b>PINK</b> NS1171-0165-00	<b>SAFETY YELLOW</b> NS1171-0187-00	<b>WHITE</b> NS1171-0222-00	<b>SURF THE WEB</b> NS1171-0244-00

MSRP: \$180








**BLACK / WHITE / SAFETY YELLOW / PINK - 18CT**  
NS1171-18SHP

- Ideal for runners, walkers, and triathletes
- Unique fastening system keeps laces secure and tight
- Reflective detail for greater nighttime visibility
- One-time setup is quick, and lace adjustment is easy

# Run Laces

MSRP: \$8

These super-secure, ultra-grippy, elastic laces are the ideal no-tie shoelace solution for athletes.

				
<b>BLACK</b> NS1170-0015-00	<b>PINK</b> NS1170-0165-00	<b>SAFETY YELLOW</b> NS1170-0186-00	<b>WHITE</b> NS1170-0222-00	<b>SURF THE WEB</b> NS1170-0244-00

MSRP: \$144



**WHITE / SURF THE WEB / SAFETY YELLOW - 18CT**  
NS1170-18SHP

- Ideal for runners, walkers, and triathletes
- Unique fastening system keeps laces secure and tight
- One-time setup is quick, and lace adjustment is easy



## Power Wash™ Performance Detergent 64oz

MSRP: \$32

Engineered to remove the funky smells we create from our activities while being friendly to the environment, Power Wash keeps your favorite gear in top shape longer. It's so safe you can wash your clothes in a stream, yet strong enough to knock out the mud, grass, and grime that somehow always seem to make it onto our favorite gear.



### CASE OF 4 - 64oz

NS1344-64oz

- The all-natural performance detergent that blasts the stink out of grimy workout clothes
- pH-Neutral, prevents fabric damage and color fading

## Power Wash™ Performance Detergent 42oz

MSRP: \$24



### CASE OF 4 - 42oz

NS1344-42oz

- All-natural ingredients restore original performance to technical fabrics including, water repellency, breathability and moisture-wicking properties
- 100% non-toxic, biodegradable & eco-friendly formula is free of bleach, fabric softener, brighteners, and scents
- Dye & fragrance free formula leaves no residue where bacteria can live
- Formulated for High Efficiency and Standard Machines

## Power Wash™ Performance Detergent Travel Pouch 3pk - 1/2oz

MSRP: \$12



NS1344-3PK

- No additives, dyes, or scents
- Formulated to restore and protect your sports apparel
- Eco-friendly
- Designed for travel

## RunCool Ice Run Hat

MSRP: \$30

Stylish race hat that has a stash pocket for ice to keep you cool on hot days.



### ASTRAL AURA / BLUE RADIANCE

OSFM NS5400-0518-00

- UPF keeps face protected from harsh sun
- Hidden pockets carry ice to keep your head cool
- Lightweight wicking material provides a layer of protection from mother nature on the top two panels
- Dry tech polyester mesh side gussets on the top keep your head cool
- Soft mesh wicking sweatband on the inside to help move sweat away from your eyes, keeping you focused on the trail or path ahead
- Adjustable back closure fits most
- Black underside of the bill to reduce glare
- Machine washable

# APPAREL



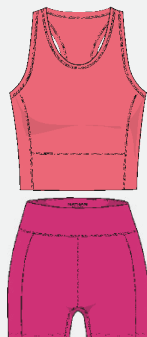
## FEATURED STYLES



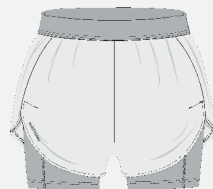
Stealth



Men's Essential  
Shorts



Interval Crop Top  
and Shorts



Women's Front  
Runner





# FOR OVER 40 YEARS

Nathan has made the best running hydration vests, packs and accessories in the industry. Now, we are expanding with the introduction of running apparel, designed to take the runner to the next level. All Nathan apparel styles are made of premium quality fabrics and materials, combined with signature technical construction. The line includes performance running outerwear, 2-in-1 semi-compression shorts, tees & layering styles.





# Stealth Jacket 2.0

MSRP: \$100

Every mile in stealth mode. This ultra-lightweight performance windbreaker is silent when you move, so you can listen to the sounds of nature and not the “swish” of your jacket.



## BLACK

S	NS51460-00001-S	XL	NS51460-00001-XL
M	NS51460-00001-M	XXL	NS51460-00001-XXL
L	NS51460-00001-L		



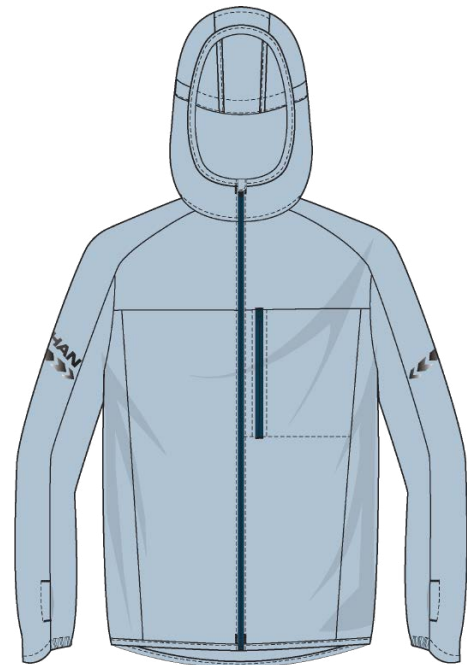
## BRIGHT LIME

S	NS51460-50119-S	XL	NS51460-50119-XL
M	NS51460-50119-M	XXL	NS51460-50119-XXL
L	NS51460-50119-L		



## RIBBON RED

S	NS51460-20164-S	XL	NS51460-20164-XL
M	NS51460-20164-M	XXL	NS51460-20164-XXL
L	NS51460-20164-L		



## SKY BLUE

S	NS51460-60258-S	XL	NS51460-60258-XL
M	NS51460-60258-M	XXL	NS51460-60258-XXL
L	NS51460-60258-L		

- Wind and water resistant with a DWR finish to repel water
- Zippered left chest pocket fits your keys or Glukos Energy Gel and packs into its own pocket with loop for ease of storage
- Lightweight and quick drying
- Noise free 2-way stretch fabric
- Ventilated back allows heat to escape
- Attached hood with drawcord keeper will keep your hood in place
- Thumbholes for layering with gloves and base layers
- Reflective logo on right and arrow design on both sleeves
- 100% Nylon

# Front Runner Shorts 3.0

MSRP: \$70

Our 2-In-1 short is designed for long runs, training and outdoor adventures. The interior short has a 5" inseam with a semi-compression fit to ensure maximum comfort and an internal Nathan signature drawcord for an adjustable fit.



## BLACK

S	NS51960-00001-S	XL	NS51960-00001-XL
M	NS51960-00001-M	XXL	NS51960-00001-XXL
L	NS51960-00001-L		



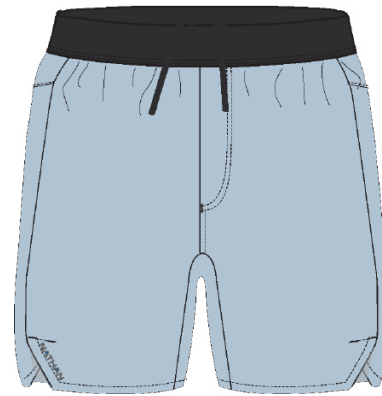
## MONUMENT GREY

S	NS51960-80128-S	XL	NS51960-80128-XL
M	NS51960-80128-M	XXL	NS51960-80128-XXL
L	NS51960-80128-L		



## SAILOR BLUE

S	NS51960-60062-S	XL	NS51960-60062-XL
M	NS51960-60062-M	XXL	NS51960-60062-XXL
L	NS51960-60062-L		



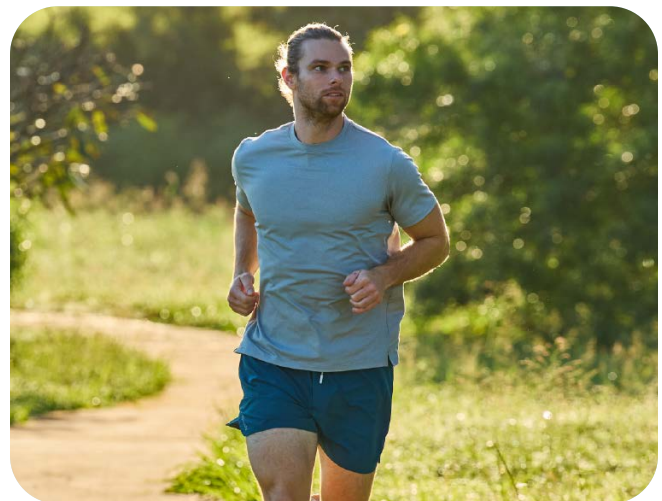
## SKY BLUE

S	NS51960-60258-S	XL	NS51960-60258-XL
M	NS51960-60258-M	XXL	NS51960-60258-XXL
L	NS51960-60258-L		



## RIBBON RED

S	NS51960-20164-S	XL	NS51960-20164-XL
M	NS51960-20164-M	XXL	NS51960-20164-XXL
L	NS51960-20164-L		



- Lightweight and stretchy outer shell fabric is moisture wicking and quick drying
- 5" Inseam
- Comfort contrast elastic waistband with drawcord
- Reflective logo on runner's right
- Center back zippered pocket for valuables
- Quick drying, comfort liner
- 2 pockets on interior short
- Flat lock seams won't rub or chafe
- Fit Type: Exterior short is relaxed fit interior liner is semi-compression fit
- Exterior Short: 88% Polyester, 12% Elastane  
Interior Short: 92% Polyester; 8% Elastane, Single jersey pique knit mesh

# Rise Long Sleeve 2.0

MSRP: \$55

The newly improved Men's Rise 2.0 Long Sleeve Shirt is the ultimate performance shirt. The design allows for maximum ease of movement and kept all the best features: superior moisture management that wicks away sweat and a back mesh panel that offers maximum ventilation. Plus, thumbholes for layering.



## BLACK

S	NS51540-00001-S	XL	NS51540-00001-XL
M	NS51540-00001-M	XXL	NS51540-00001-XXL
L	NS51540-00001-L		



## SAILOR BLUE

S	NS51540-60062-S	XL	NS51540-60062-XL
M	NS51540-60062-M	XXL	NS51540-60062-XXL
L	NS51540-60062-L		



RACE DAY

- Eco friendly recycled fabric offers superior moisture management, wicks sweat away and dries quickly
- Mesh back panel provides maximum ventilation
- Thumbholes for layering with gloves and base layers

- Reflective logo on runner's right and arrow design on center back
- Side seams that angle forward with split hem for ease of movement
- Flat lock seams won't rub or chafe

- Fit Type: Semi-Fitted
- UPF +50
- Body: 100% Recycled Polyester  
Back Panel: 92% Polyester; 8% Elastane,  
Single jersey pique knit mesh



## Rise Tee 2.0

MSRP: \$50

Our Men's Rise 2.0 Short Sleeve Shirt is the ultimate performance tee. The updated design allows for maximum ease of movement and keeps all the best features: superior moisture management that wicks away sweat and a back mesh panel that offers maximum ventilation.



### BLACK

S	NS50880-00001-S
M	NS50880-00001-M
L	NS50880-00001-L
XL	NS50880-00001-XL
XXL	NS50880-00001-XXL



### BRIGHT LIME

S	NS50880-50119-S
M	NS50880-50119-M
L	NS50880-50119-L
XL	NS50880-50119-XL
XXL	NS50880-50119-XXL



### SAILOR BLUE

S	NS50880-60062-S
M	NS50880-60062-M
L	NS50880-60062-L
XL	NS50880-60062-XL
XXL	NS50880-60062-XXL

- Eco friendly recycled fabric offers superior moisture management, wicks sweat away and dries quickly
- Mesh back panel provides maximum ventilation
- Reflective logo on runner's right and arrow design on center back

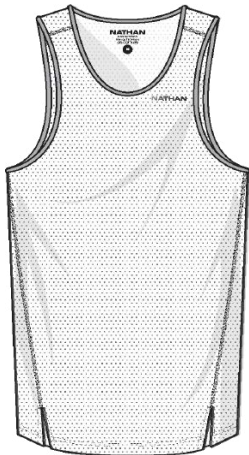
- Side seams that angle forward with split hem for ease of movement
- Flat lock seams won't rub or chafe
- Fit Type: Semi-Fitted

- UPF +50
- Body: 100% Recycled Polyester  
Back Panel: 92% Polyester; 8% Elastane,  
Single jersey pique knit mesh.

## Sprinter Tank

MSRP: \$45

This ultimate lightweight mesh tank offers 360 degrees of ventilation for superior breathability. The slightly shorter and narrower body allows for more freedom of movement during your run.



### WHITE

S	NS50720-90002-S
M	NS50720-90002-M
L	NS50720-90002-L
XL	NS50720-90002-XL
XXL	NS50720-90002-XXL



### MONUMENT GREY

S	NS50720-80128-S
M	NS50720-80128-M
L	NS50720-80128-L
XL	NS50720-80128-XL
XXL	NS50720-80128-XXL



### SKY BLUE

S	NS50720-60258-S
M	NS50720-60258-M
L	NS50720-60258-L
XL	NS50720-60258-XL
XXL	NS50720-60258-XXL

- Superior moisture management, wicks sweat away and dries quickly
- Mesh fabric provides maximum ventilation and breathability
- Flat lock seams won't rub or chafe

- Reflective logo on left chest and arrow design on center back for maximum visibility
- Side seams that angle forward with split hem for ease of movement
- Fit Type: Semi-Fitted

- UPF +50
- Body: 92% Polyester, 8% Elastane

## Vamos Track Jacket

MSRP: \$115

This modern track jacket is made of wind and water resistant 4-way stretch fabric, making it a perfect layering companion for windy days and everyday wear.



### BLACK

S	NS50320-00001-S
M	NS50320-00001-M
L	NS50320-00001-L
XL	NS50320-00001-XL
XXL	NS50320-00001-XXL



### FOREST GREEN

S	NS50320-50121-S
M	NS50320-50121-M
L	NS50320-50121-L
XL	NS50320-50121-XL
XXL	NS50320-50121-XXL



### SAILOR BLUE

S	NS50320-60062-S
M	NS50320-60062-M
L	NS50320-60062-L
XL	NS50320-60062-XL
XXL	NS50320-60062-XXL

- 4-way stretch fabric provides a perfect fit and ease of movement
- Durable water-repellent finish repels water from the surface fabric
- Highly wind resistant

- Exposed reverse coil center front zip with internal draft flap
- Left chest welted zipper pocket
- Two piece articulated sleeves for increased mobility
- Bonded cuffs with partial elastic

- Zipper secured closure hand pockets
- Hidden inside mesh pocket on wearer's right
- Nathan reflective logo on wearer's right side
- Fit Type: Relaxed
- 86% Polyester, 14% Spandex

## Navigator Hybrid Vest

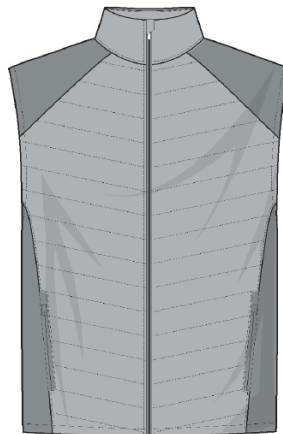
MSRP: \$125

Our lightweight, versatile hybrid vest protects the runner and outdoor adventurer in low temps. This technical outer layer features a wind and water resistant insulated front panel and 4-way stretch side and back panels.



### BLACK

S	NS51580-00001-S
M	NS51580-00001-M
L	NS51580-00001-L
XL	NS51580-00001-XL
XXL	NS51580-00001-XXL



### GREY MIST

S	NS51580-80122-S
M	NS51580-80122-M
L	NS51580-80122-L
XL	NS51580-80122-XL
XXL	NS51580-80122-XXL



### DEEP BLUE

S	NS51580-60239-S
M	NS51580-60239-M
L	NS51580-60239-L
XL	NS51580-60239-XL
XXL	NS51580-60239-XXL

- Front panel features water resistant wind blocker shell and insulation to maximize warmth
- Back and torso feature lightweight 4-way stretch woven fabric
- Water and wind resistant to stay dry and keep warm

- Reflective detail on runner's center back, strategically placed to be seen
- 2 zippered hand warmer pockets with brushed tricot pocket lining
- 1 internal zippered right chest pocket
- Locking zipper with chin guard to reduce distraction

- Fit Type: Semi-Fitted
- Front Panel Outer Shell: 100% Polyester Ripstop Fabric with DWR C6 finish  
Front Panel Insulation: 100% Polyester fill that provides insulation, even when wet  
Torso Back & Side Fabric: 86% Polyester, 14% Spandex

# Tempo 1/4 Zip Long Sleeve 3.0

MSRP: \$75

Tempo Quarter Zip made of performance fabric that wicks moisture and dries quickly. Wear it before, after, or during your run when temperatures are low.



## BLACK

S	NS52220-00001-S	XL	NS52220-00001-XL
M	NS52220-00001-M	XXL	NS52220-00001-XXL
L	NS52220-00001-L		



## MONUMENT GREY

S	NS52220-80128-S	XL	NS52220-80128-XL
M	NS52220-80128-M	XXL	NS52220-80128-XXL
L	NS52220-80128-L		



## FOREST GREEN

S	NS52220-50121-S	XL	NS52220-50121-XL
M	NS52220-50121-M	XXL	NS52220-50121-XXL
L	NS52220-50121-L		



## SAILOR BLUE

S	NS52220-60062-S	XL	NS52220-60062-XL
M	NS52220-60062-M	XXL	NS52220-60062-XXL
L	NS52220-60062-L		

- Superior moisture management, wicks sweat away and dries quickly

- Reflective logo on runner's right and arrow design on center back for maximum visibility
- Fit Type: Semi-Fitted

- UPF +50
- Body: 88% Polyester, 12% Elastane



## Adventure Jacket

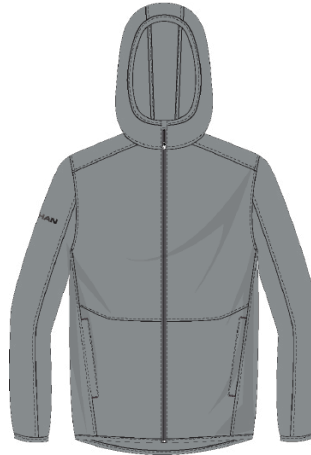
MSRP: \$135

Built for adventure and designed for hiking, jogging and every day. The Adventure Jacket will become your go-to for long, activity-filled days.



### BLACK

S	NS51560-00001-S
M	NS51560-00001-M
L	NS51560-00001-L
XL	NS51560-00001-XL
XXL	NS51560-00001-XXL



### MONUMENT GREY

S	NS51560-80128-S
M	NS51560-80128-M
L	NS51560-80128-L
XL	NS51560-80128-XL
XXL	NS51560-80128-XXL



### SAILOR BLUE

S	NS51560-60062-S
M	NS51560-60062-M
L	NS51560-60062-L
XL	NS51560-60062-XL
XXL	NS51560-60062-XXL

- 4-way stretch double woven fabric
- Water and wind resistant
- Abrasion resistant
- Reflective detail on right sleeve and center back
- Two piece articulated sleeves for increased mobility

- Attached 3 panel hood for best fit to keep the elements at bay
- Exposed reverse coil center front zip with internal draft flap
- 2 Front zippered pockets

- 1 Internal zippered pocket for cell phone and other small valuables
- Fit Type: Relaxed
- 88% Polyester, 12% Elastane

## Adventure Jogger

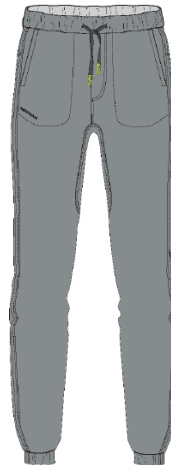
MSRP: \$100

Built for adventure and designed for hiking, jogging and every day. The Adventure Jogger will become your go-to for long, activity-filled days.



### BLACK

S	NS50840-00001-S
M	NS50840-00001-M
L	NS50840-00001-L
XL	NS50840-00001-XL
XXL	NS50840-00001-XXL



### MONUMENT GREY

S	NS50840-80128-S
M	NS50840-80128-M
L	NS50840-80128-L
XL	NS50840-80128-XL
XXL	NS50840-80128-XXL



### SAILOR BLUE

S	NS50840-60062-S
M	NS50840-60062-M
L	NS50840-60062-L
XL	NS50840-60062-XL
XXL	NS50840-60062-XXL

- 4-way stretch technical woven fabric
- Water and wind resistant
- Elastic waistband with Nathan signature drawcord
- Tapered leg with narrow elastic cuffs

- Front drop in hand pockets
- Secure zippered back pocket on wearer's right
- Reflective logo on front right hip

- 29 1/2" inseam
- Fit Type: Relaxed
- 88% Polyester, 12% Elastane

## Qualifier Tee

MSRP: \$50

Performance tee with strategically placed side panels and flatlock seams that do not rub or chafe. Designed to move with you during runs, workouts, and hikes. Offered in solid and heathered colors.



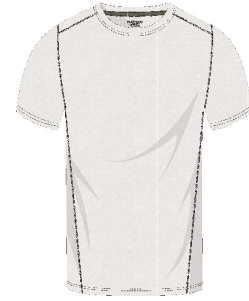
### BLACK

S	NS51820-00001-S
M	NS51820-00001-M
L	NS51820-00001-L
XL	NS51820-00001-XL
XXL	NS51820-00001-XXL



### BLACK HEATHER

S	NS51820-00168-S
M	NS51820-00168-M
L	NS51820-00168-L
XL	NS51820-00168-XL
XXL	NS51820-00168-XXL



### GREY MIST HEATHER

S	NS51820-80124-S
M	NS51820-80124-M
L	NS51820-80124-L
XL	NS51820-80124-XL
XXL	NS51820-80124-XXL



### FOREST GREEN HEATHER

S	NS51820-50123-S
M	NS51820-50123-M
L	NS51820-50123-L
XL	NS51820-50123-XL
XXL	NS51820-50123-XXL



### RIBBON RED

S	NS51820-20164-S
M	NS51820-20164-M
L	NS51820-20164-L
XL	NS51820-20164-XL
XXL	NS51820-20164-XXL



### SAILOR BLUE

S	NS51820-60062-S
M	NS51820-60062-M
L	NS51820-60062-L
XL	NS51820-60062-XL
XXL	NS51820-60062-XXL

- Superior moisture management wicks sweat away and dries quickly
- Lightweight and breathable

- Side panel construction for superior fit and comfort
- Reflective logo center back
- Flat lock seams won't rub or chafe

- Fit Type: Semi-Fitted
- 45% Recycled Polyester, 45% Polyester, 10% Elastane, single jersey knit

## Qualifier Sleeveless Tee

MSRP: \$45

Performance sleeveless tee with strategically placed side panels and flatlock seams that do not rub or chafe. Designed to move with you during runs, workouts, and hikes. Offered in solid and heathered colors.



### BLACK

S	NS51840-00001-S
M	NS51840-00001-M
L	NS51840-00001-L
XL	NS51840-00001-XL
XXL	NS51840-00001-XXL



### BLACK HEATHER

S	NS51840-00168-S
M	NS51840-00168-M
L	NS51840-00168-L
XL	NS51840-00168-XL
XXL	NS51840-00168-XXL



### GREY MIST HEATHER

S	NS51840-80124-S
M	NS51840-80124-M
L	NS51840-80124-L
XL	NS51840-80124-XL
XXL	NS51840-80124-XXL

- Superior moisture management wicks sweat away and dries quickly
- Lightweight and breathable

- Side panel construction for superior fit and comfort
- Reflective logo center back
- Flat lock seams won't rub or chafe

- Fit Type: Semi-Fitted
- 45% Recycled Polyester, 45% Polyester, 10% Elastane, single jersey knit

## Essential Shorts 7" 2.0 Printed

MSRP: \$70

Show off your personality and style with this lightweight printed lined short featuring moisture wicking, quick drying 4-way stretch fabric.



### BLUE TIE DYE

S	NS51340-60256-S
M	NS51340-60256-M
L	NS51340-60256-L
XL	NS51340-60256-XL
XXL	NS51340-60256-XXL



### GREEN CAMO

S	NS51340-50139-S
M	NS51340-50139-M
L	NS51340-50139-L
XL	NS51340-50139-XL
XXL	NS51340-50139-XXL



### GREY CAMO

S	NS51340-80144-S
M	NS51340-80144-M
L	NS51340-80144-L
XL	NS51340-80144-XL
XXL	NS51340-80144-XXL



### NATHAN SIGNATURE GREY

S	NS51340-80132-S
M	NS51340-80132-M
L	NS51340-80132-L
XL	NS51340-80132-XL
XXL	NS51340-80132-XXL

- Moisture wicking and quick drying
- Lightweight and stretchy
- 7" Inseam
- 3 1/2" Split hem at side seams for ease of movement
- Quick drying comfort boxer brief liner

- Comfort waistband with Nathan signature exterior drawcord
- 2 side pockets, 1 internal stash pocket, 2 short liner pockets, 1 back zippered pocket
- Reflective logo on runner's right
- Flat lock seams on the interior short to reduce chafing and friction

- Fit Type: Relaxed fit exterior short, semi compression fit interior liner
- UPF +50
- Exterior Short: 88% Polyester, 12% Elastane  
Interior Short: 92% Polyester; 8% Elastane, Single jersey pique knit mesh





## Essential Shorts 7" 2.0

MSRP: \$65

Great for runs, workouts or hiking, this lightweight lined short features a moisture wicking and quick drying 4-way stretch fabric.



### BLACK

S	NS51320-00001-S
M	NS51320-00001-M
L	NS51320-00001-L
XL	NS51320-00001-XL
XXL	NS51320-00001-XXL

### MONUMENT GREY

S	NS51320-80128-S
M	NS51320-80128-M
L	NS51320-80128-L
XL	NS51320-80128-XL
XXL	NS51320-80128-XXL

### FOREST GREEN

S	NS51320-50121-S
M	NS51320-50121-M
L	NS51320-50121-L
XL	NS51320-50121-XL
XXL	NS51320-50121-XXL

### SAILOR BLUE

S	NS51320-60062-S
M	NS51320-60062-M
L	NS51320-60062-L
XL	NS51320-60062-XL
XXL	NS51320-60062-XXL

- Moisture wicking and quick drying
- Lightweight and stretchy
- 7" Inseam
- 3 1/2" Split hem at side seams for ease of movement
- Quick drying comfort boxer brief liner
- Comfort waistband with Nathan signature exterior drawcord
- 2 side pockets, 1 internal stash pocket, 2 short liner pockets, 1 back zippered pocket
- Reflective logo on runner's right
- Flat lock seams on the interior short to reduce chafing and friction
- Fit Type: Relaxed fit exterior short, semi compression fit interior liner
- UPF +50
- Exterior Short: 88% Polyester, 12% Elastane  
Interior Short: 92% Polyester, 8% Elastane, Single jersey pique knit mesh

## Essential Shorts 9" 2.0

MSRP: \$65

For those who like their shorts a little longer with more coverage we offer a 9" inseam option.



### BLACK

S	NS51360-00001-S
M	NS51360-00001-M
L	NS51360-00001-L
XL	NS51360-00001-XL
XXL	NS51360-00001-XXL

### MONUMENT GREY

S	NS51360-80128-S
M	NS51360-80128-M
L	NS51360-80128-L
XL	NS51360-80128-XL
XXL	NS51360-80128-XXL

### FOREST GREEN

S	NS51360-50121-S
M	NS51360-50121-M
L	NS51360-50121-L
XL	NS51360-50121-XL
XXL	NS51360-50121-XXL

### SAILOR BLUE

S	NS51360-60062-S
M	NS51360-60062-M
L	NS51360-60062-L
XL	NS51360-60062-XL
XXL	NS51360-60062-XXL

- Moisture wicking and quick drying
- Lightweight and stretchy
- 9" Inseam
- 3 1/2" Split hem at side seams for ease of movement
- Quick drying comfort boxer brief liner
- Comfort waistband with Nathan signature exterior drawcord
- 2 side pockets, 1 internal stash pocket, 2 short liner pockets, 1 back zippered pocket
- Reflective logo on runner's right
- Flat lock seams on the interior short to reduce chafing and friction
- Fit Type: Relaxed fit exterior short, semi compression fit interior liner
- UPF +50
- Exterior Short: 88% Polyester, 12% Elastane  
Interior Short: 92% Polyester; 8% Elastane, Single jersey pique knit mesh

# Stride Training Shorts

MSRP: \$65

The ultimate training shorts. Designed with room for your legs, but tapered at the hem for the perfect fit. Breathable and quick drying, these will never stick and remain comfortable throughout the duration of your workout, run, or everyday adventures.



## BLACK

S	NS50760-00001-S
M	NS50760-00001-M
L	NS50760-00001-L
XL	NS50760-00001-XL
XXL	NS50760-00001-XXL



## HEATHER CHARCOAL

S	NS50760-80088-S
M	NS50760-80088-M
L	NS50760-80088-L
XL	NS50760-80088-XL
XXL	NS50760-80088-XXL



## HEATHER FOREST GREEN

S	NS50760-50123-S
M	NS50760-50123-M
L	NS50760-50123-L
XL	NS50760-50123-XL
XXL	NS50760-50123-XXL

- Moisture wicking and quick drying
- Super lightweight 4-way stretch short fabric
- 4-way stretch waistband, with Nathan signature drawstring
- 9" Inch Inseam
- Unlined short
- 3 1/2" split hem at side seams for ease of movement
- Bonded hem detail for a clean look
- Nathan reflective logo on wearers right leg
- UPF +30
- 88% Polyester, 12% Elastane  
4-Way Stretch waistband: 80% Polyester, 20% Elastane



## Essential Shorts 7" Unlined

MSRP: \$60

Great for runs, workouts or hiking, this ultra-lightweight short features a moisture wicking and quick drying stretch fabric.



### BLACK

S	NS50520-00001-S
M	NS50520-00001-M
L	NS50520-00001-L
XL	NS50520-00001-XL
XXL	NS50520X-00001-XXL



### HEATHER CHARCOAL

S	NS50520-80088-S
M	NS50520-80088-M
L	NS50520-80088-L
XL	NS50520-80088-XL
XXL	NS50520X-80088-XXL



### HEATHER FOREST GREEN

S	NS50520-50123-S
M	NS50520-50123-M
L	NS50520-50123-L
XL	NS50520-50123-XL
XXL	NS50520-50123-XXL

- Moisture wicking and quick drying
- Lightweight and stretchy
- 7" Inseam
- 3 1/2" split hem at side seams for ease of movement
- Unlined short
- Comfort waistband with Nathan signature exterior drawcord
- 2 side pockets, 1 internal stash pocket, 1 back zippered pocket
- Reflective logo on runner's right
- Flat lock seams on the interior short to reduce chafing and friction
- Fit Type: Relaxed fit exterior short, semi-compression fit interior liner
- UPF +30
- Solid Color: 88% Polyester, 12% Elastane  
Heathered Colors: 89% Polyester, 11% Elastane

## Essential Shorts 9" Unlined

MSRP: \$60

For those who like their shorts a little longer with more coverage we offer a 9" inseam option.



### BLACK

S	NS50700-00001-S
M	NS50700-00001-M
L	NS50700-00001-L
XL	NS50700-00001-XL
XXL	NS50700X-00001-XXL



### HEATHER CHARCOAL

S	NS50700-80088-S
M	NS50700-80088-M
L	NS50700-80088-L
XL	NS50700-80088-XL
XXL	NS50700X-80088-XXL



### HEATHER FOREST GREEN

S	NS50700-50123-S
M	NS50700-50123-M
L	NS50700-50123-L
XL	NS50700-50123-XL
XXL	NS50700-50123-XXL

- Moisture wicking and quick drying
- Lightweight and stretchy
- 9" Inseam
- 3 1/2" split hem at side seams for ease of movement
- Unlined short
- Comfort waistband with Nathan signature exterior drawcord
- 2 side pockets, 1 internal stash pocket, 1 back zippered pocket
- Reflective logo on runner's right
- Flat lock seams on the interior short to reduce chafing and friction
- Fit Type: Relaxed fit exterior short, semi-compression fit interior liner
- UPF +30
- Solid Color: 88% Polyester, 12% Elastane  
Heathered Colors: 89% Polyester, 11% Elastane



## Dash Long Sleeve

MSRP: \$55

Our Men's 2.0 Dash Long Sleeve Shirt is up for anything. Premium no-cling fabric provides comfort, wicks away moisture, and keeps you cool for every workout, bike ride, or trail run.



### SOLID BLACK

S	NS50400-00178-S	XL	NS50400-00178-XL
M	NS50400-00178-M	XXL	NS50400-00178-XXL
L	NS50400-00178-L		



### BURNT ORANGE

S	NS50400-30117-S	XL	NS50400-30117-XL
M	NS50400-30117-M	XXL	NS50400-30117-XXL
L	NS50400-30117-L		



### MONUMENT GREY STRIPE

S	NS50400-80130-S	XL	NS50400-80130-XL
M	NS50400-80130-M	XXL	NS50400-80130-XXL
L	NS50400-80130-L		



### SAILOR BLUE STRIPE

S	NS50400-60201-S	XL	NS50400-60201-XL
M	NS50400-60201-M	XXL	NS50400-60201-XXL
L	NS50400-60201-L		

- Superior moisture management, wicks sweat away and dries quickly
- 4-way stretch and side seams that angle forward with v-notch for ease of movement

- Made with our tri-blend fabric, a combination of thin nylon, polyester and elastane yarn which creates a softer hand, faster drying time and improved breathability
- Reflective logo on wearer's right sleeve

- Fit Type: Semi-Relaxed Fit
- 58% Nylon, 35% Polyester, 7% Elastane

# Dash Tee 2.0

MSRP: \$50

Our Men's 2.0 Dash Short Sleeve Shirt is up for anything. Updated no-cling fabric construction provides comfort, wicks away moisture, and keeps you cool for every workout, bike ride, or trail run.

365 COMFORT



## BLACK

S	NS50920-00001-S
M	NS50920-00001-M
L	NS50920-00001-L
XL	NS50920-00001-XL
XXL	NS50920-00001-XXL



## DARK LIME

S	NS50920-50137-S
M	NS50920-50137-M
L	NS50920-50137-L
XL	NS50920-50137-XL
XXL	NS50920-50137-XXL



## DEEP BLUE

S	NS50920-60239-S
M	NS50920-60239-M
L	NS50920-60239-L
XL	NS50920-60239-XL
XXL	NS50920-60239-XXL



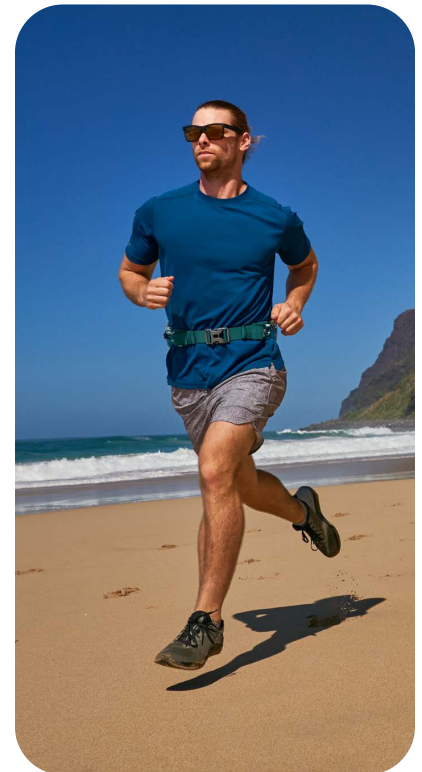
## MONUMENT GREY STRIPE

S	NS50920-80130-S
M	NS50920-80130-M
L	NS50920-80130-L
XL	NS50920-80130-XL
XXL	NS50920-80130-XXL



## SAILOR BLUE STRIPE

S	NS50920-60201-S
M	NS50920-60201-M
L	NS50920-60201-L
XL	NS50920-60201-XL
XXL	NS50920-60201-XXL



- Superior moisture management, wicks sweat away and dries quickly
- 4-Way Stretch and side seams that angle forward with v-notch for ease of movement

- Made with our tri-blend fabric, a combination of thin nylon, polyester and elastane yarn which creates a softer hand, faster drying time and improved breathability
- Reflective logo on wearer's right sleeve

- Fit Type: Semi-Relaxed Fit
- 58% Nylon, 35% Polyester, 7% Elastane

## 365 Hoodie

MSRP: \$75

Mid-weight technical knit hoodie that is soft, comfortable and versatile for warm-up, cool down, or everyday lounging. You will want to wear this top 24/7/365.



### DARK CHARCOAL

S	NS50360-80078-S
M	NS50360-80078-M
L	NS50360-80078-L
XL	NS50360-80078-XL
XXL	NS50360-80078-XXL



### FOREST GREEN

S	NS50360-50121-S
M	NS50360-50121-M
L	NS50360-50121-L
XL	NS50360-50121-XL
XXL	NS50360-50121-XXL



### SAILOR BLUE

S	NS50360-60062-S
M	NS50360-60062-M
L	NS50360-60062-L
XL	NS50360-60062-XL
XXL	NS50360-60062-XXL

- Superior moisture management, wicks sweat away and dries quickly
- Ultra-soft & stretchy fabric that holds its shape

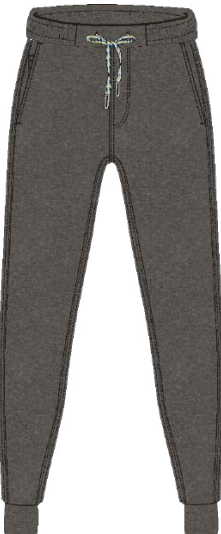
- Reflective logo on wearers right sleeve
- Fit Type: Relaxed Fit

- 88% Polyester 12% Spandex

## 365 Jogger

MSRP: \$85

Versatile technical knit jogger that is soft, comfortable and versatile for warm-up, cool down, or everyday lounging. You will want to wear this top 24/7/365.



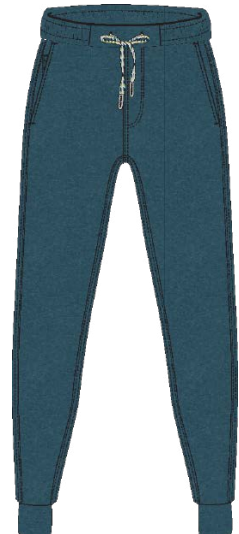
### DARK CHARCOAL

S	NS50620-80078-S
M	NS50620-80078-M
L	NS50620-80078-L
XL	NS50620-80078-XL
XXL	NS50620X-80078-XXL



### FOREST GREEN

S	NS50620-50121-S
M	NS50620-50121-M
L	NS50620-50121-L
XL	NS50620-50121-XL
XXL	NS50620-50121-XXL



### SAILOR BLUE

S	NS50620-60062-S
M	NS50620-60062-M
L	NS50620-60062-L
XL	NS50620-60062-XL
XXL	NS50620-60062-XXL

- Superior moisture management, wicks sweat away and dries quickly
- 4-way stretch waistband, with Nathan signature external drawcord

- Drop-in hand pockets and zippered coin pocket at wearer's right
- Reflective logo on center back
- Relaxed fit with a tapered leg and cuff that sits at ankle

- 29 1/2" inseam size medium
- Fit Type: Relaxed Fit
- 88% Polyester 12% Spandex



# 365 Shorts

MSRP: \$65

Versatile technical knit short made from soft, comfortable performance fabric. Elastic waistband with exterior Nathan Signature drawcord, faux fly detail and tapered legs provide a clean look and comfortable fit.



### DARK CHARCOAL

- S NS50860-80078-S
- M NS50860-80078-M
- L NS50860-80078-L
- XL NS50860-80078-XL
- XXL NS50860-80078-XXL



### FOREST GREEN

- S NS50860-50121-S
- M NS50860-50121-M
- L NS50860-50121-L
- XL NS50860-50121-XL
- XXL NS50860-50121-XXL



### SAILOR BLUE

- S NS50860-60062-S
- M NS50860-60062-M
- L NS50860-60062-L
- XL NS50860-60062-XL
- XXL NS50860-60062-XXL

- Superior moisture management, wicks sweat away and dries quickly
- Ultra-soft & stretchy fabric that holds its shape
- Elastic stretch waistband, with Nathan signature external drawcord
- Drop-in hand pockets and zippered coin pocket at wearer's right
- Reflective logo on right back hip
- Back patch pocket on right side
- Standard fit with tapered leg opening
- 7" Inseam
- Fit Type: Relaxed Fit
- 88% Polyester 12% Spandex



# Women's Stealth Jacket 2.0

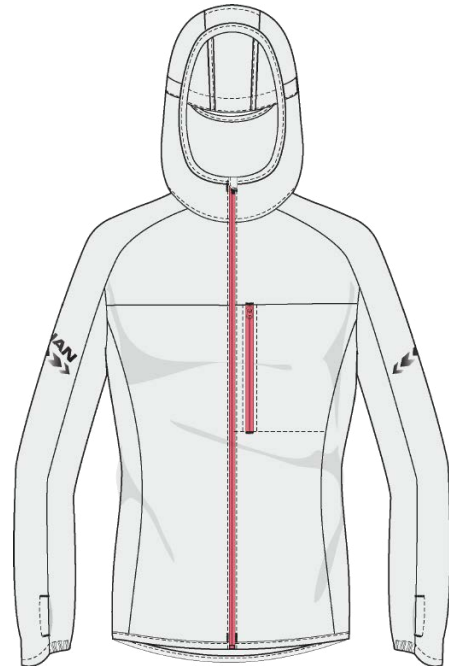
MSRP: \$100

Every mile in stealth mode. This ultra-lightweight performance windbreaker is silent when you move, so you can listen to the sounds of nature and not the "swish" of your jacket.



## BLACK

XS	NS51480-00001-XS	L	NS51480-00001-L
S	NS51480-00001-S	XL	NS51480-00001-XL
M	NS51480-00001-M		



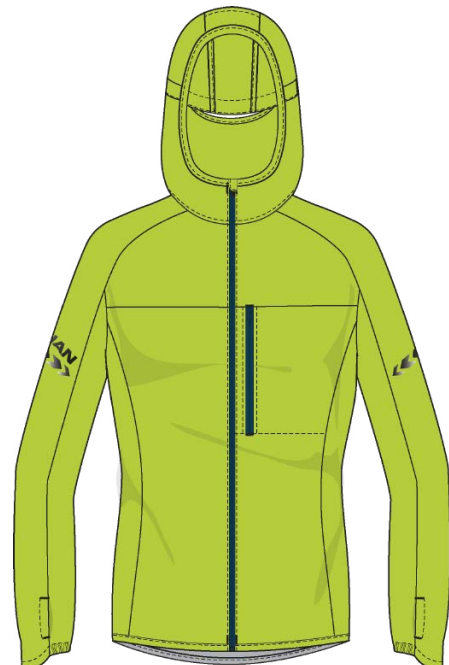
## WHITE

XS	NS51480-90002-XS	L	NS51480-90002-L
S	NS51480-90002-S	XL	NS51480-90002-XL
M	NS51480-90002-M		



## DEEP BLUE

XS	NS51480-60239-XS	L	NS51480-60239-L
S	NS51480-60239-S	XL	NS51480-60239-XL
M	NS51480-60239-M		



## BRIGHT LIME

XS	NS51480-50119-XS	L	NS51480-50119-L
S	NS51480-50119-S	XL	NS51480-50119-XL
M	NS51480-50119-M		

- Wind and water resistant with a DWR finish to repel water
- Zippered left chest pocket fits your keys or Glukos Energy Gel and packs into its own pocket with loop for ease of storage
- Lightweight and quick drying
- Noise free fabric 2-way stretch
- Ventilated back allows heat to escape
- Attached hood with drawcord keeper will keep your hood in place
- Thumbholes for layering with gloves and base layers
- Reflective logo on right and arrow design on both sleeves
- 100% Nylon

## Women's Interval Crop Top

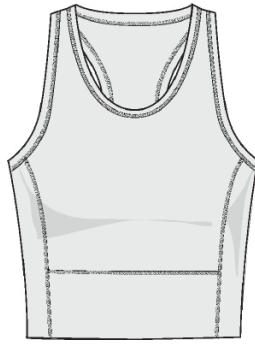
MSRP: \$55

Our Women's Interval Crop Top is a racerback with a wide band detail in front and back for maximum comfort and full range of motion. Designed to wear over your favorite sports bra when running or working out, it provides the perfect amount of compression. This functional and stylish piece works well beyond the trails, studio and gym to everyday wear.



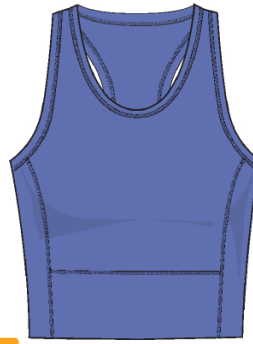
### BLACK

XS	NS51000-00001-XS
S	NS51000-00001-S
M	NS51000-00001-M
L	NS51000-00001-L
XL	NS51000-00001-XL



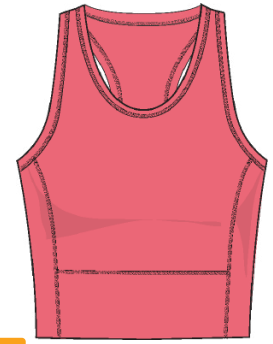
### WHITE

XS	NS51000-90002-XS
S	NS51000-90002-S
M	NS51000-90002-M
L	NS51000-90002-L
XL	NS51000-90002-XL



### BAJA PURPLE

XS	NS51000-70025-XS
S	NS51000-70025-S
M	NS51000-70025-M
L	NS51000-70025-L
XL	NS51000-70025-XL



### CORAL

XS	NS51000-20158-XS
S	NS51000-20158-S
M	NS51000-20158-M
L	NS51000-20158-L
XL	NS51000-20158-XL

- Superior moisture management, wicks sweat away and dries quickly
- Flat lock seams won't rub or chafe
- Unique wide band & side panel design offers secure comfortable fit
- Reflective detail down center back
- Fit Type: Semi-Compression Fit
- 80% Polyester, 20% Elastane

## Women's Interval Running Tights

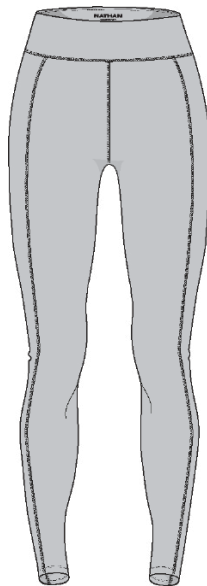
MSRP: \$90

Semi-compression running tights contour your waist, hips and thighs for a sculpted look. The mid-rise fit and wide waistband offer ultimate comfort and will keep your tights in place during longer runs.



### BLACK

XS	NS51620-00001-XS
S	NS51620-00001-S
M	NS51620-00001-M
L	NS51620-00001-L
XL	NS51620-00001-XL



### GREY MIST

XS	NS51620-80122-XS
S	NS51620-80122-S
M	NS51620-80122-M
L	NS51620-80122-L
XL	NS51620-80122-XL



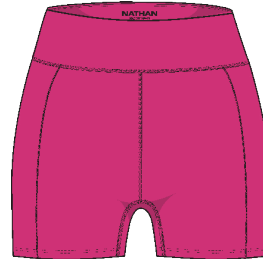
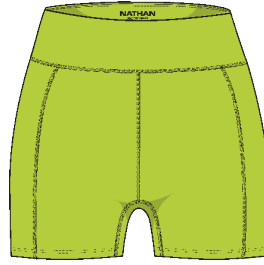
- Superior moisture management, wicks sweat away and dries quickly
- Lightweight 4-way stretch fabric
- 26" Inseam
- Comfort wide waistband that offers maximum support
- Reflective detail on exterior lower legs
- 2 Front interior pockets at waistband
- Secure zippered center back pocket
- Flat lock seams won't rub or chafe
- Fit Type: Semi-Compression Fit
- 80% Polyester; 20% Elastane



## Women's Interval Bike Shorts 3"

MSRP: \$65

Our Interval Bike Shorts are a performance semi-compression short that contours your waist, hips and thighs for a sculpted look. Mid-rise fit with wide waistband will keep your shorts in place even during the toughest of workouts.



### BLACK

XS	NS51040-00001-XS
S	NS51040-00001-S
M	NS51040-00001-M
L	NS51040-00001-L
XL	NS51040-00001-XL

### BRIGHT LIME

XS	NS51040-50119-XS
S	NS51040-50119-S
M	NS51040-50119-M
L	NS51040-50119-L
XL	NS51040-50119-XL



### HOT PINK

XS	NS51040-20162-XS
S	NS51040-20162-S
M	NS51040-20162-M
L	NS51040-20162-L
XL	NS51040-20162-XL



### SODALITE BLUE

XS	NS51040-60247-XS
S	NS51040-60247-S
M	NS51040-60247-M
L	NS51040-60247-L
XL	NS51040-60247-XL

- Superior moisture management, wicks sweat away and dries quickly
- Lightweight 4-way stretch fabric
- 3" Inseam

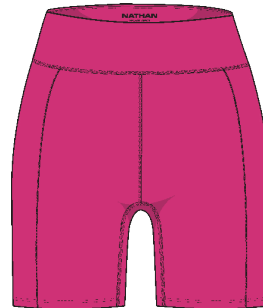
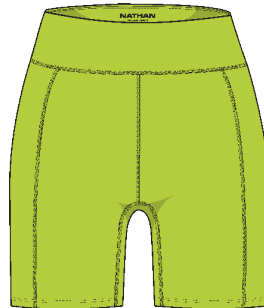
- Comfort wide waistband that offers maximum support
- Reflective detail on exterior legs
- 2 Front interior pockets at waistband
- Secure zippered center back pocket

- Flat lock seams won't rub or chafe
- Fit Type: Semi-Compression Fit
- 80% Polyester; 20% Elastane

## Women's Interval Bike Shorts 6"

MSRP: \$70

Our Interval Bike Shorts are a performance semi-compression short that contours your waist, hips and thighs for a sculpted look. Mid-rise fit with wide waistband will keep your shorts in place even during the toughest of workouts.



### BLACK

XS	NS51520-00001-XS
S	NS51520-00001-S
M	NS51520-00001-M
L	NS51520-00001-L
XL	NS51520-00001-XL

### BRIGHT LIME

XS	NS51520-50119-XS
S	NS51520-50119-S
M	NS51520-50119-M
L	NS51520-50119-L
XL	NS51520-50119-XL



### HOT PINK

XS	NS51520-20162-XS
S	NS51520-20162-S
M	NS51520-20162-M
L	NS51520-20162-L
XL	NS51520-20162-XL



### SODALITE BLUE

XS	NS51520-60247-XS
S	NS51520-60247-S
M	NS51520-60247-M
L	NS51520-60247-L
XL	NS51520-60247-XL

- Superior moisture management, wicks sweat away and dries quickly
- Lightweight 4-way stretch fabric
- 6" Inseam

- Comfort wide waistband that offers maximum support
- Reflective detail on exterior legs
- 2 Front interior pockets at waistband
- Secure zippered center back pocket

- Flat lock seams won't rub or chafe
- Fit Type: Semi-Compression Fit
- 80% Polyester; 20% Elastane

## Women's Sprinter Tee

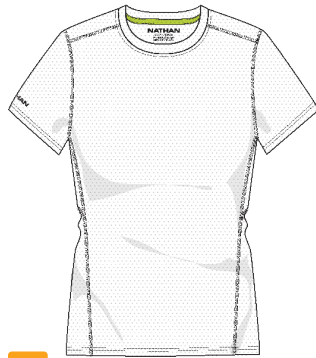
MSRP: \$50

The Women's Sprinter Tee is lightweight and offers 360 degrees of ventilation for superior breathability. A slightly shorter torso with a v-notch at center back provides ease of movement and airflow.



### BLACK

XS	NS51860-00001-XS
S	NS51860-00001-S
M	NS51860-00001-M
L	NS51860-00001-L
XL	NS51860-00001-XL



### WHITE

XS	NS51860-90002-XS
S	NS51860-90002-S
M	NS51860-90002-M
L	NS51860-90002-L
XL	NS51860-90002-XL



### BRIGHT LIME

XS	NS51860-50119-XS
S	NS51860-50119-S
M	NS51860-50119-M
L	NS51860-50119-L
XL	NS51860-50119-XL



### DEEP BLUE

XS	NS51860-60239-XS
S	NS51860-60239-S
M	NS51860-60239-M
L	NS51860-60239-L
XL	NS51860-60239-XL

- Superior moisture management, wicks sweat away and dries quickly
- Micro mesh fabric provides maximum ventilation & breathability
- Split hem at center back for ease of movement and airflow
- Reflective logo on right chest and arrow design on center back for maximum visibility
- Flat lock seams won't rub or chafe
- Fit Type: Semi-Fitted
- UPF 50+
- 92% Polyester, 8% Elastane, Single jersey pique knit mesh.

## Women's Sprinter Sleeveless Tee

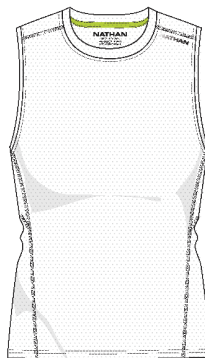
MSRP: \$45

The Women's Sprinter Sleeveless Tee is lightweight and offers 360 degrees of ventilation for superior breathability. A slightly shorter torso with a v-notch at center back provides ease of movement and airflow.



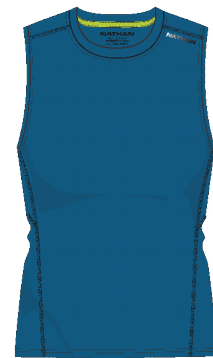
### BLACK

XS	NS51880-00001-XS
S	NS51880-00001-S
M	NS51880-00001-M
L	NS51880-00001-L
XL	NS51880-00001-XL



### WHITE

XS	NS51880-90002-XS
S	NS51880-90002-S
M	NS51880-90002-M
L	NS51880-90002-L
XL	NS51880-90002-XL



### DEEP BLUE

XS	NS51880-60239-XS
S	NS51880-60239-S
M	NS51880-60239-M
L	NS51880-60239-L
XL	NS51880-60239-XL

- Superior moisture management, wicks sweat away and dries quickly
- Micro mesh fabric provides maximum ventilation & breathability
- Split hem at center back for ease of movement and airflow
- Reflective logo on left shoulder and arrow design on center back for maximum visibility
- Flat lock seams won't rub or chafe
- Fit Type: Semi-Fitted
- 92% Polyester, 8% Elastane, Single jersey pique knit mesh.

# Women's Rise Long Sleeve 2.0

MSRP: \$55

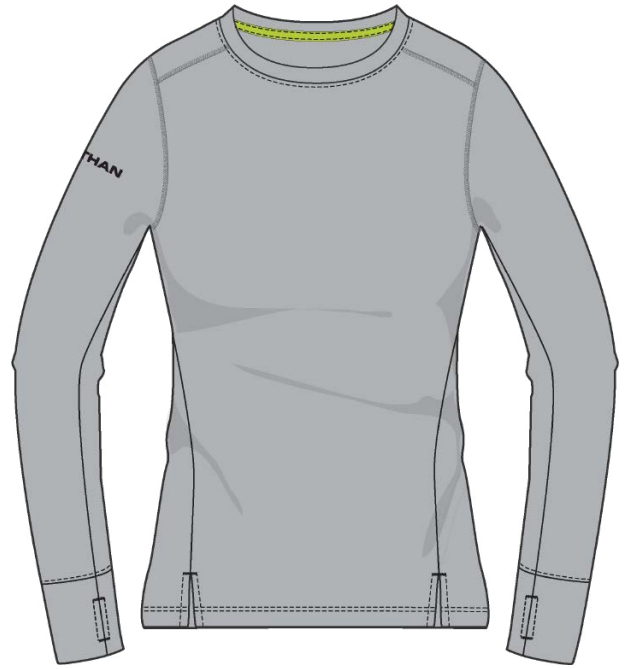
The Women's Rise 2.0 Long Sleeve Shirt will get you through those longer, colder runs. The updated design allows for maximum ease of movement while the performance fabric wicks and dries quickly to keep you warm.

RACE DAY



## BLACK

XS	NS51600-00001-XS	L	NS51600-00001-L
S	NS51600-00001-S	XL	NS51600-00001-XL
M	NS51600-00001-M		



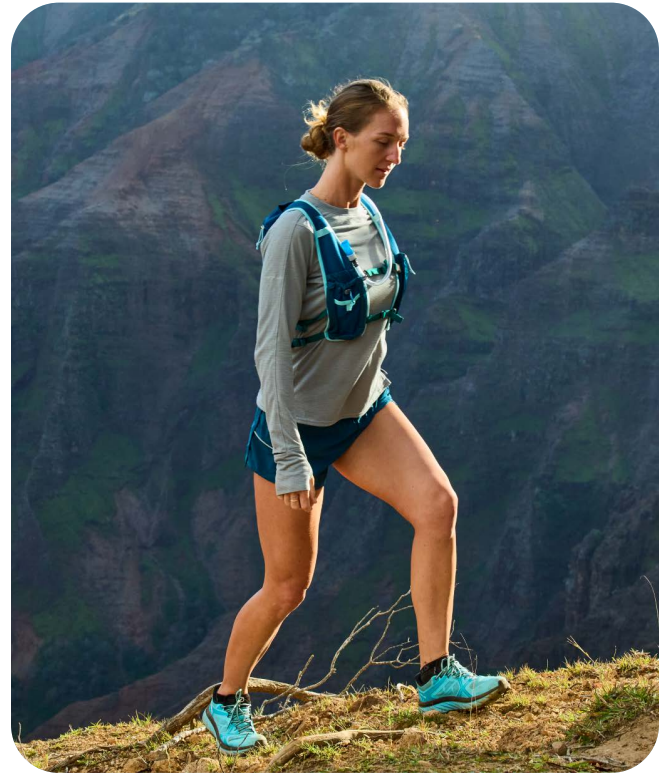
## GREY MIST

XS	NS51600-80122-XS	L	NS51600-80122-L
S	NS51600-80122-S	XL	NS51600-80122-XL
M	NS51600-80122-M		



## BAJA PURPLE

XS	NS51600-70025-XS	L	NS51600-70025-L
S	NS51600-70025-S	XL	NS51600-70025-XL
M	NS51600-70025-M		



- Eco friendly recycled fabric offers superior moisture management, wicks sweat away and dries quickly
- Mesh back panel provides maximum ventilation
- Thumbholes for layering with jackets and gloves

- Reflective logo on right sleeve and arrow design on center back
- Side seams that angle forward with split hem for ease of movement
- Flat lock seams won't rub or chafe

- Fit Type: Semi-Fitted
- UPF 50+
- Body: 100% Recycled Polyester  
Back Panel: 92% Polyester; 8% Elastane,  
Single jersey pique knit mesh.



# Women's Front Runner Shorts 3.0

MSRP: \$70

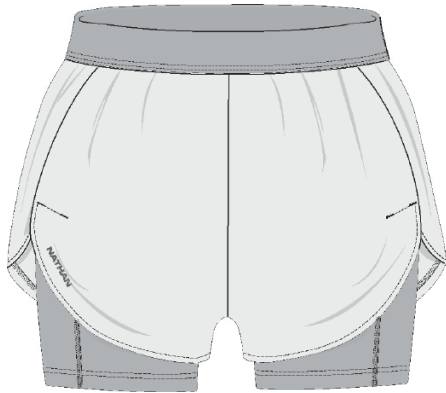
Our 2-in-1 short is designed for long runs, training and outdoor adventures. The interior short has been extended to 5.5" inseam with a slightly tighter fit to ensure maximum comfort.



**N**

## BLACK

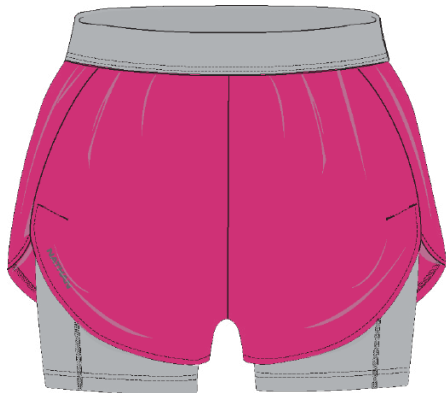
XS	NS51980-00001-XS	L	NS51980-00001-L
S	NS51980-00001-S	XL	NS51980-00001-XL
M	NS51980-00001-M		



**N**

## WHITE

XS	NS51980-90002-XS	L	NS51980-90002-L
S	NS51980-90002-S	XL	NS51980-90002-XL
M	NS51980-90002-M		



**N**

## HOT PINK

XS	NS51980-20162-XS	L	NS51980-20162-L
S	NS51980-20162-S	XL	NS51980-20162-XL
M	NS51980-20162-M		



RACE DAY

- Lightweight and stretchy outer shell fabric is moisture wicking and quick drying
- Comfort contrast elastic waistband with drawcord
- 2.5" Inseam exterior short 5.5" Inseam interior short
- Center back zippered pocket for valuables
- Reflective logo on runner's right & arrow design on left exterior leg
- Quick drying, comfort liner
- 2 Pockets on interior short
- Flat lock seams won't rub or chafe
- Fit Type: exterior short is relaxed fit interior liner is semi compression fit
- Exterior Short: 88% Polyester, 12% Elastane Interior Short: 92% Polyester; 8% Elastane, Single jersey pique knit mesh.

## Women's Vamos Track Jacket

MSRP: \$115

This modern track jacket is made of wind and water resistant 4-way stretch fabric, making it a perfect layering companion for windy days and everyday wear.



### BLACK

XS	NS50040-00001-XS
S	NS50040-00001-S
M	NS50040-00001-M
L	NS50040-00001-L
XL	NS50040-00001-XL

- 4-way stretch fabric provides a perfect fit and ease of movement
- Durable water-repellent finish repels water from the surface fabric
- Highly wind resistant



### PLUM

XS	NS50040-70030-XS
S	NS50040-70030-S
M	NS50040-70030-M
L	NS50040-70030-L
XL	NS50040-70030-XL

- Exposed reverse coil center front zip with internal draft flap
- Left chest welted zipper pocket
- Two piece articulated sleeves for increased mobility
- Bonded cuffs with partial elastic



### SAILOR BLUE

XS	NS50040-60062-XS
S	NS50040-60062-S
M	NS50040-60062-M
L	NS50040-60062-L
XL	NS50040-60062-XL

- Zipper secured closure hand pockets
- Hidden inside mesh pocket on wearer's right
- Nathan reflective logo on wearer's right-hand sleeve
- Fit Type: Semi-Fitted
- 86% Polyester, 14% Spandex

## Women's Navigator Hybrid Vest

MSRP: \$125

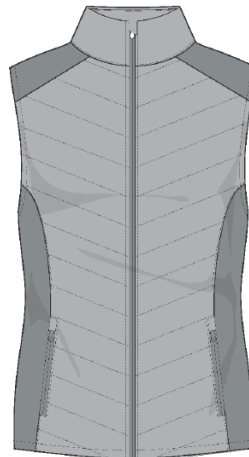
Our lightweight, versatile hybrid vest protects the runner and outdoor adventurer when the temperature is low. This technical outer layer features a wind and water resistant insulated front panel and 4-way stretch side and back panels.



### BLACK

XS	NS51640-00001-XS
S	NS51640-00001-S
M	NS51640-00001-M
L	NS51640-00001-L
XL	NS51640-00001-XL

- Front panel features water resistant wind blocker shell and insulation to maximize warmth
- Back and torso feature lightweight 4-way stretch woven fabric
- Water and wind resistant to stay dry and keep warm
- 1 internal zippered right chest pocket



### GREY MIST

XS	NS51640-80122-XS
S	NS51640-80122-S
M	NS51640-80122-M
L	NS51640-80122-L
XL	NS51640-80122-XL

- Reflective detail on runner's center back, strategically placed to be seen
- 2 zippered hand warmer pockets with brushed tricot pocket lining
- Locking zipper with chin guard to reduce distraction
- Fit Type: Semi-Fitted



### DEEP BLUE

XS	NS51640-60239-XS
S	NS51640-60239-S
M	NS51640-60239-M
L	NS51640-60239-L
XL	NS51640-60239-XL

- Front Panel Outer Shell: 100% Polyester Ripstop Fabric with DWR C6 finish
- Front Panel Insulation: 100% Polyester fill that provides insulation, even when wet
- Torso Back & Sides Fabric: 86% Polyester, 14% Spandex

# Women's Tempo 1/4 Zip Long Sleeve 2.0

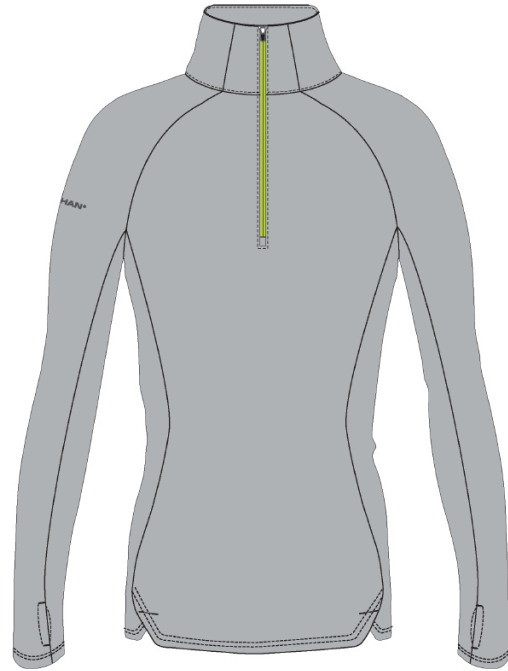
MSRP: \$75

The Tempo Quarter Zip is made of performance fabric that wicks moisture and dries quickly. Updated to a lightweight layering style that has minimal seams and improved 4-way stretch fabric for a superior fit. Wear it before, after, or during your run when temperatures are low.



## BLACK

XS	NS51380-00001-XS	L	NS51380-00001-L
S	NS51380-00001-S	XL	NS51380-00001-XL
M	NS51380-00001-M		



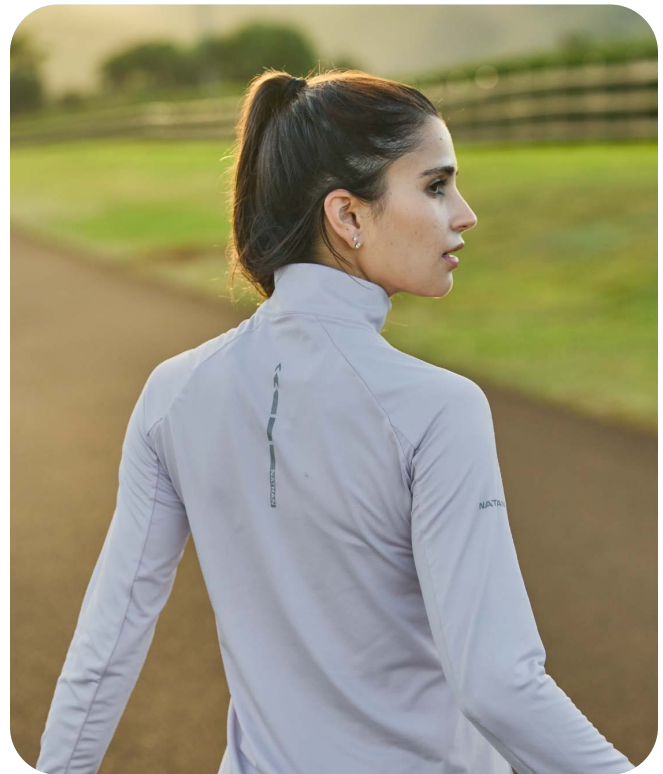
## GREY MIST

XS	NS51380-80122-XS	L	NS51380-80122-L
S	NS51380-80122-S	XL	NS51380-80122-XL
M	NS51380-80122-M		



## SODALITE BLUE

XS	NS51380-60247-XS	L	NS51380-60247-L
S	NS51380-60247-S	XL	NS51380-60247-XL
M	NS51380-60247-M		



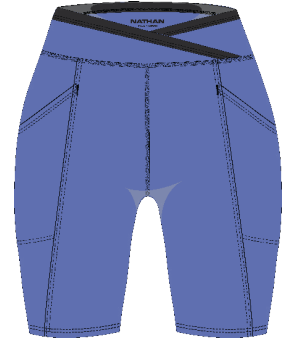
- Superior moisture management, wicks sweat away and dries quickly
- Soft 4-way stretch mid-weight knit fabric
- Front 1/4 zip features auto locking stay down zipper
- Zippered high collar keeps out the cold
- Thumbholes designed for layering with gloves or base layer
- Reflective detail on runner's right sleeve and down center back
- Fit Type: Semi-Fitted Fit
- Body: 88% Polyester, 12% Elastane



## Women's Crossover Shorts 2.0

MSRP: \$65

These shorts feature a high rise crossover waistband that stays in place and provides a flattering look. Designed to fit mid thigh, they are perfect for training, hiking and casual everyday use.



### SAILOR BLUE

XS	NS51740-00001-XS
S	NS51740-00001-S
M	NS51740-00001-M
L	NS51740-00001-L
XL	NS51740-00001-XL

XS	NS51740-60062-XS
S	NS51740-60062-S
M	NS51740-60062-M
L	NS51740-60062-L
XL	NS51740-60062-XL

### BAJA PURPLE

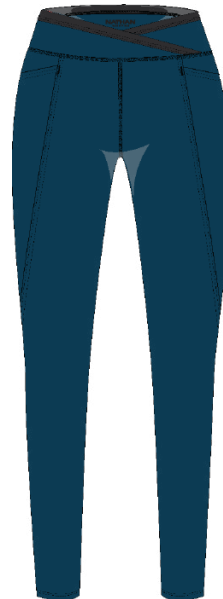
XS	NS51740-70025-XS
S	NS51740-70025-S
M	NS51740-70025-M
L	NS51740-70025-L
XL	NS51740-70025-XL

- Superior moisture management, wicks sweat away and dries quickly
- Elastic crossover waistband that will stay in place
- 6" Inseam
- 2 side pockets
- Reflective logo on right leg and detail on pockets
- Flat lock seams won't rub or chafe
- Fit Type: Semi-Compression Fit
- 80% Polyester, 20% Spandex

## Women's Crossover Tights

MSRP: \$90

These tights feature a high rise crossover waistband that stays in place and provides a flattering look. Designed to fit just above the ankle, they are perfect for training, hiking and casual everyday use.

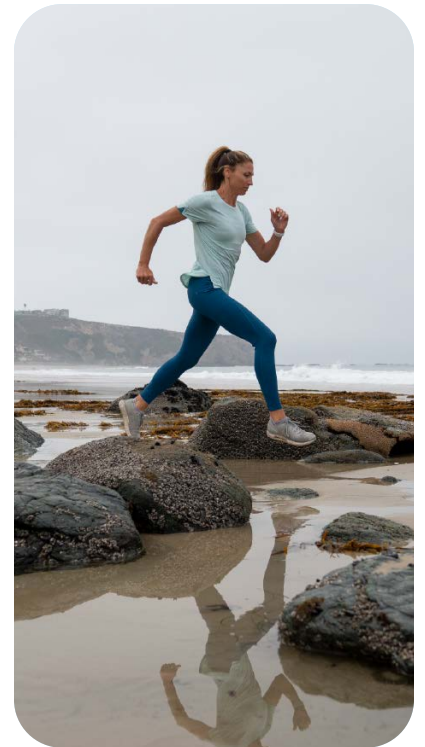


### BLACK

XS	NS51760-00001-XS
S	NS51760-00001-S
M	NS51760-00001-M
L	NS51760-00001-L
XL	NS51760-00001-XL

### SAILOR BLUE

XS	NS51760-60062-XS
S	NS51760-60062-S
M	NS51760-60062-M
L	NS51760-60062-L
XL	NS51760-60062-XL



- Superior moisture management, wicks sweat away and dries quickly
- Elastic crossover waistband that will stay in place
- 7/8th inseam, designed to fit above your ankle
- 2 side pockets
- Reflective logo on right leg and detail on pockets
- Flat lock seams won't rub or chafe
- Fit Type: Semi-Compression Fit
- 80% Polyester, 20% Spandex

## Women's Qualifier Tee

MSRP: \$50

Our Women's Qualifier Tee is a durable, soft, heathered tee designed for performance. Strategically placed side panels and flatlock seams do not rub or chafe. Wear it for training, workouts, or everyday.



### BLACK HEATHER

XS	NS51500-00168-XS
S	NS51500-00168-S
M	NS51500-00168-M
L	NS51500-00168-L
XL	NS51500-00168-XL



### GREY MIST HEATHER

XS	NS51500-80124-XS
S	NS51500-80124-S
M	NS51500-80124-M
L	NS51500-80124-L
XL	NS51500-80124-XL



### **N** BAJA PURPLE HEATHER

XS	NS51500-70034-XS
S	NS51500-70034-S
M	NS51500-70034-M
L	NS51500-70034-L
XL	NS51500-70034-XL



### **N** CORAL HEATHER

XS	NS51500-20160-XS
S	NS51500-20160-S
M	NS51500-20160-M
L	NS51500-20160-L
XL	NS51500-20160-XL

- Superior moisture management, wicks sweat away and dries quickly
- Lightweight and breathable
- Reflective detail down center back

- Side panel construction for maximum comfort & flattering fit
- Flat lock seams won't rub or chafe
- Fit Type: Fitted

- UPF +45
- 45% Recycled Polyester, 45% Polyester, 10% Elastane

## Women's Qualifier Tank

MSRP: \$45

Our Women's Qualifier Tank is a durable, soft, heathered tee designed for performance. Strategically placed side panels and flatlock seams do not rub or chafe. Wear it for training, workouts, or everyday.



### BLACK HEATHER

XS	NS51080-00168-XS
S	NS51080-00168-S
M	NS51080-00168-M
L	NS51080-00168-L
XL	NS51080-00168-XL



### GREY MIST HEATHER

XS	NS51080-80124-XS
S	NS51080-80124-S
M	NS51080-80124-M
L	NS51080-80124-L
XL	NS51080-80124-XL



### **N** CORAL HEATHER

XS	NS51080-20160-XS
S	NS51080-20160-S
M	NS51080-20160-M
L	NS51080-20160-L
XL	NS51080-20160-XL

- Superior moisture management, wicks sweat away and dries quickly
- Lightweight and breathable
- Reflective detail down center back

- Side panel construction for maximum comfort & flattering fit
- Flat lock seams won't rub or chafe
- Fit Type: Fitted

- UPF +45
- 45% Recycled Polyester, 45% Polyester, 10% Elastane

# Women's Stride Training Shorts

MSRP: \$65

The ultimate training shorts. Made of breathable and quick drying fabrics that will never cling to your body and remain comfortable throughout the duration of your workout, run, or everyday adventures.



## BLACK

XS	NS51100-00001-XS
S	NS51100-00001-S
M	NS51100-00001-M
L	NS51100-00001-L
XL	NS51100-00001-XL

## GREY MIST

XS	NS51100-80122-XS
S	NS51100-80122-S
M	NS51100-80122-M
L	NS51100-80122-L
XL	NS51100-80122-XL



## HOT PINK

XS	NS51100-20162-XS
S	NS51100-20162-S
M	NS51100-20162-M
L	NS51100-20162-L
XL	NS51100-20162-XL



## SODALITE BLUE

XS	NS51100-60247-XS
S	NS51100-60247-S
M	NS51100-60247-M
L	NS51100-60247-L
XL	NS51100-60247-XL

- Moisture wicking and quick drying
- Exterior short is lightweight and 4-way stretch
- 4-way stretch knit moisture wicking waistband
- Small pocket on front waistband and zippered back pocket for valuables center back waistband
- 4" Inseam & v-notch at side seam for ease of movement
- Nathan logo center back
- UPF +30
- Short Fabric: 88% Polyester, 12% Elastane  
4-Way Stretch waistband & Interior Brief: 80% Polyester, 20% Elastane



TRAINING



## Women's Essential Shorts 2.0 Printed

MSRP: \$70

Show off your personality and style with this lightweight printed lined short featuring moisture wicking, quick drying 4-way stretch fabric.



### BLUE ABSTRACT

XS	NS51420-60254-XS
S	NS51420-60254-S
M	NS51420-60254-M
L	NS51420-60254-L
XL	NS51420-60254-XL



### GREY CAMO

XS	NS51420-80144-XS
S	NS51420-80144-S
M	NS51420-80144-M
L	NS51420-80144-L
XL	NS51420-80144-XL



### PURPLE ABSTRACT

XS	NS51420-70042-XS
S	NS51420-70042-S
M	NS51420-70042-M
L	NS51420-70042-L
XL	NS51420-70042-XL



### TEAL CAMO

XS	NS51420-60249-XS
S	NS51420-60249-S
M	NS51420-60249-M
L	NS51420-60249-L
XL	NS51420-60249-XL

- Superior moisture management, wicks sweat away and dries quickly
- Lightweight and stretchy
- 2.5" inseam
- Quick drying comfort panty liner
- Comfort waistband with Nathan signature interior drawcord
- 2 Side pockets, 1 back zippered pocket
- Reflective logo on runner's right
- Fit Type: Relaxed fit exterior short, semi-compression fit interior liner
- Exterior Short: 88% Polyester, 12% Elastane  
Interior Brief: 82% Polyester, 18% Elastane

## Women's Essential Shorts 2.0

MSRP: \$65

Great for runs, workouts or hiking, this lightweight lined short features a moisture wicking and quick drying 4-way stretch fabric.



### BLACK

XS	NS51400-00001-XS
S	NS51400-00001-S
M	NS51400-00001-M
L	NS51400-00001-L
XL	NS51400-00001-XL



### BAJA PURPLE

XS	NS51400-70025-XS
S	NS51400-70025-S
M	NS51400-70025-M
L	NS51400-70025-L
XL	NS51400-70025-XL



### CORAL

XS	NS51400-20158-XS
S	NS51400-20158-S
M	NS51400-20158-M
L	NS51400-20158-L
XL	NS51400-20158-XL



### SAILOR BLUE

XS	NS51400-60062-XS
S	NS51400-60062-S
M	NS51400-60062-M
L	NS51400-60062-L
XL	NS51400-60062-XL

- Superior moisture management, wicks sweat away and dries quickly
- Lightweight and stretchy
- 2.5" inseam
- Quick drying comfort panty liner
- Comfort waistband with Nathan signature exterior drawcord
- 2 Side pockets, 1 back zippered pocket
- Reflective logo on runner's right
- Fit Type: Relaxed fit exterior short, semi-compression fit interior liner
- Exterior Short: 88% Polyester, 12% Elastane  
Fabric Interior Brief: 82% Polyester, 18% Elastane

## Women's Dash Long Sleeve

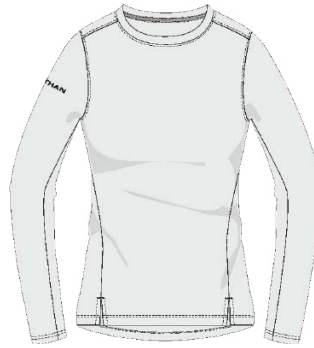
MSRP: \$55

Our Women's 2.0 Dash Long Sleeve Shirt is up for anything. Made of premium fabric that provides comfort, wicks away moisture, and keeps you cool for every workout, bike ride, or trail run.



### SOLID BLACK

XS	NS50120-00178-XS
S	NS50120-00178-S
M	NS50120-00178-M
L	NS50120-00178-L
XL	NS50120-00178-XL



### WHITE

XS	NS50120-90002-XS
S	NS50120-90002-S
M	NS50120-90002-M
L	NS50120-90002-L
XL	NS50120-90002-XL



### PLUM STRIPE

XS	NS50120-70038-XS
S	NS50120-70038-S
M	NS50120-70038-M
L	NS50120-70038-L
XL	NS50120-70038-XL



### SAILOR BLUE STRIPE

XS	NS50120-60201-XS
S	NS50120-60201-S
M	NS50120-60201-M
L	NS50120-60201-L
XL	NS50120-60201-XL

- Superior moisture management, wicks sweat away and dries quickly
- 4-Way stretch and side seams that angle forward with v-notch for ease of movement

- Made with our tri-blend fabric, a combination of thin nylon, polyester and elastane yarn which creates a softer hand, faster drying time and improved breathability
- Reflective logo on wearer's right sleeve

- Fit Type: Semi-Fitted
- 58% Nylon, 35% Polyester, 7% Elastane

## Women's Dash Tee 2.0

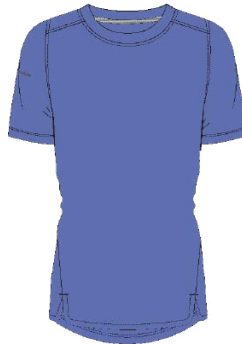
MSRP: \$50

Our Women's 2.0 Dash Short Sleeve Shirt is up for anything. Made of premium fabric that provides comfort, wicks away moisture, and keeps you cool for every workout, bike ride, or trail run.



### BLACK

XS	NS51280-00001-XS
S	NS51280-00001-S
M	NS51280-00001-M
L	NS51280-00001-L
XL	NS51280-00001-XL



### BAJA PURPLE

XS	NS51280-70025-XS
S	NS51280-70025-S
M	NS51280-70025-M
L	NS51280-70025-L
XL	NS51280-70025-XL



### DEEP TEAL STRIPE

XS	NS51280-60243-XS
S	NS51280-60243-S
M	NS51280-60243-M
L	NS51280-60243-L
XL	NS51280-60243-XL



### SAILOR BLUE STRIPE

XS	NS51280-60201-XS
S	NS51280-60201-S
M	NS51280-60201-M
L	NS51280-60201-L
XL	NS51280-60201-XL

- Superior moisture management, wicks sweat away and dries quickly
- 4-Way stretch and side seams that angle forward with v-notch for ease of movement

- Made with our tri-blend fabric, a combination of thin nylon, polyester and elastane yarn which creates a softer hand, faster drying time and improved breathability
- Reflective logo on wearer's right sleeve

- Fit Type: Relaxed Fit
- 58% Nylon, 35% Polyester, 7% Elastane

## Women's 365 Hoodie

MSRP: \$75

Mid-weight technical knit hoodie that is soft, comfortable and versatile for warm-up, cool down, or everyday lounging. You will want to wear this top 24/7/365.



### DARK CHARCOAL

XS	NS50080-80078-XS
S	NS50080-80078-S
M	NS50080-80078-M
L	NS50080-80078-L
XL	NS50080-80078-XL



### BAJA PURPLE

XS	NS50080-70025-XS
S	NS50080-70025-S
M	NS50080-70025-M
L	NS50080-70025-L
XL	NS50080-70025-XL



### SAILOR BLUE

XS	NS50080-60062-XS
S	NS50080-60062-S
M	NS50080-60062-M
L	NS50080-60062-L
XL	NS50080-60062-XL

- Superior moisture management, wicks sweat away and dries quickly
- Ultra-Soft & stretchy fabric that holds its shape

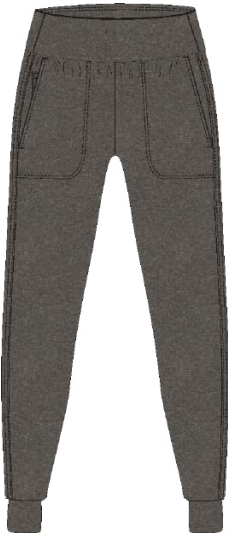
- Reflective logo on wearers right sleeve
- Fit Type: Relaxed Fit

- 88% Polyester 12% Spandex

## Women's 365 Jogger

MSRP: \$85

Versatile technical knit jogger that is soft, comfortable and versatile for warm-up, cool down, or everyday lounging. You will want to wear this top 24/7/365.



### DARK CHARCOAL

XS	NS50640-80078-XS
S	NS50640-80078-S
M	NS50640-80078-M
L	NS50640-80078-L
XL	NS50640-80078-XL



### BAJA PURPLE

XS	NS50640-70025-XS
S	NS50640-70025-S
M	NS50640-70025-M
L	NS50640-70025-L
XL	NS50640-70025-XL



### SAILOR BLUE

XS	NS50640-60062-XS
S	NS50640-60062-S
M	NS50640-60062-M
L	NS50640-60062-L
XL	NS50640-60062-XL

- Superior moisture management, wicks sweat away and dries quickly
- 4-way stretch waistband, with Nathan signature external drawcord

- Drop-in hand pockets and zippered coin pocket at wearer's right
- Reflective logo on center back
- Relaxed fit with a tapered leg and cuff that sits at ankle

- 27 1/2" inseam size medium
- Fit Type: Relaxed Fit
- 88% Polyester 12% Spandex



## Women's 365 Shorts

MSRP: \$65

Versatile technical knit short made from soft, comfortable performance fabric. Elastic waistband with exterior Nathan Signature drawcord and tapered legs provide a clean look and comfortable fit.



### DARK CHARCOAL

XS	NS51240-80078-XS
S	NS51240-80078-S
M	NS51240-80078-M
L	NS51240-80078-L
XL	NS51240-80078-XL

### BAJA PURPLE

XS	NS51240-70025-XS
S	NS51240-70025-S
M	NS51240-70025-M
L	NS51240-70025-L
XL	NS51240-70025-XL



### SAILOR BLUE

XS	NS51240-60062-XS
S	NS51240-60062-S
M	NS51240-60062-M
L	NS51240-60062-L
XL	NS51240-60062-XL

- Superior moisture management, wicks sweat away and dries quickly
- Soft & stretchy fabric that holds its shape
- Elastic waistband with Nathan signature external drawcord
- Drop-in hand pockets and zippered coin pocket at wearer's right
- Reflective logo on right front
- 4" Inseam
- 88% Polyester 12% Spandex







ASSORTMENT GUIDE

NATHAN

NATHAN

# Men's Spring 2023 Assortment #1



JACKETS

- 1. **Stealth Jacket 2.0**  
Ribbon Red
- 2. **Adventure Jacket**  
Black
- 3. **Navigator Hybrid Vest**  
Grey Mist

SHIRTS / TANKS

- 4. **Rise Tee 2.0**  
Black
- 5. **Dash Tee**  
Monument Grey Stripe
- 6. **Qualifier Tee**  
Ribbon Red  
Grey Mist Heather
- 7. **Sprinter Tank**  
Monument Grey
- 8. **Qualifier Sleeveless Tee**  
Grey Mist Heather
- 9. **Tempo 1/4 Zip Long Sleeve 2.0**  
Black  
Monument Grey
- 10. **Dash Long Sleeve**  
Monument Grey Stripe
- 11. **365 Hoodie**  
Dark Charcoal

SHORTS / JOGGERS

- 12. **Front Runner Shorts 3.0**  
Monument Grey  
Ribbon Red
- 13. **Essential Shorts 7"/9" 2.0**  
Black
- 14. **365 Shorts**  
Dark Charcoal
- 15. **Essential Shorts 7" 2.0 Printed**  
Grey Camo  
Nathan Signature Grey
- 16. **Essential Shorts 7"/9" Unlined**  
Heather Charcoal
- 17. **Adventure Jogger**  
Black



# Men's Spring 2023 Assortment #2



- JACKETS**
- Stealth Jacket 2.0**  
Black
  - Vamos Track Jacket**  
Forest Green
  - Adventure Jacket**  
Monument Grey
- SHIRTS / TANKS**
- Rise Tee 2.0**  
Bright Lime
  - Qualifier Tee**  
Grey Mist Heather  
Forest Green Heather
  - Dash Tee**  
Dark Lime
  - Qualifier Sleeveless Tee**  
Black Heather
  - Tempo 1/4 Zip Long Sleeve 2.0**  
Monument Grey  
Forest Green
  - Rise Long Sleeve**  
Black
  - 365 Hoodie**  
Forest Green
  - Dash Long Sleeve**  
Black
- SHORTS / JOGGERS**
- Front Runner Shorts 3.0**  
Black
  - Essential Shorts 7"/9" 2.0**  
Forest Green
  - Essential Shorts 7" 2.0 Printed**  
Green Camo
  - Essential Shorts 7"/9" Unlined**  
Forest Green
  - Stride Training Shorts**  
Forest Green Heather
  - 365 Shorts**  
Forest Green
  - 365 Jogger**  
Forest Green
  - Adventure Jogger**  
Monument Grey

# Men's Spring 2023 Assortment #3



- JACKETS**
- 1. **Stealth Jacket 2.0**  
Sky Blue
- 2. **Adventure Jacket**  
Sailor Blue
- 3. **Vamos Track Jacket**  
Sailor Blue
- 4. **Navigator Hybrid Jacket**  
Deep Blue
- SHIRTS / TANKS**
- 5. **Rise Tee**  
Sailor Blue
- 6. **Dash Tee**  
Black  
Deep Blue
- 7. **Qualifier Tee**  
Black  
Black Heather  
Sailor Blue
- 8. **Sprinter Tank**  
Sky Blue
- 9. **Qualifier Sleeveless Tee**  
Black
- 10. **Dash Long Sleeve**  
Solid Black  
Burnt Orange
- 11. **Tempo 1/4 Zip Long Sleeve**  
Sailor Blue
- 12. **365 Hoodie**  
Dark Charcoal
- SHORTS / JOGGERS**
- 13. **Front Runner Shorts**  
Sky Blue
- 14. **Essential Shorts 7"/9"**  
Monument Grey  
Sailor Blue
- 15. **Essential Shorts 7" Printed**  
Blue Tye Die
- 16. **Essential Shorts 7"/9" Unlined**  
Black
- 17. **Stride Training Shorts**  
Heather Charcoal
- 18. **365 Shorts**  
Dark Charcoal
- 19. **365 Jogger**  
Dark Charcoal
- 20. **Adventure Jogger**  
Sailor Blue

# Men's Spring 2023 Assortment #4



JACKETS

- 1. **Stealth Jacket 2.0**  
Bright Lime
- 2. **Vamos Track Jacket**  
Black
- 3. **Navigator Hybrid Vest**  
Black

SHIRTS / TANKS

- 4. **Rise Tee 2.0**  
Bright Lime
- 5. **Qualifier Tee**  
Black  
Black Heather  
Sailor Blue
- 6. **Dash Tee**  
Sailor Blue
- 7. **Sprinter Tee**  
White
- 8. **Qualifier Sleeveless Tee**  
Black
- 9. **Rise Long Sleeve**  
Sailor Blue
- 10. **Dash Long Sleeve**  
Sailor Blue
- 11. **365 Hoodie**  
Sailor Blue

SHORTS / JOGGERS

- 12. **Front Runner Shorts**  
Sailor Blue
- 13. **Essential Shorts 7"/9"**  
Black  
Sailor Blue
- 14. **Essential Shorts 7" Printed**  
Blue Tye Die
- 15. **Essential Shorts 7"/9" Unlined**  
Heather Charcoal
- 16. **Stride Training Shorts**  
Black
- 17. **365 Shorts**  
Sailor Blue
- 18. **365 Jogger**  
Sailor Blue



# Women's Spring 2023 Assortment #1



JACKETS

1. **Stealth Jacket 2.0**  
White
2. **Navigator Hybrid Vest**  
Grey Mist

SHIRTS / TANKS

3. **Sprinter Tee**  
White
4. **Qualifier Tee**  
Coral Heather
5. **Qualifier Tank**  
Grey Mist  
Coral Heather
6. **Interval Crop Top**  
White  
Coral
7. **Sprinter Sleeveless Tee**  
White
8. **Rise Long Sleeve**  
Grey Mist
9. **365 Hoodie**  
Dark Charcoal
10. **Dash Long Sleeve**  
White

SHORTS / JOGGERS

11. **Front Runner Shorts**  
White  
Hot Pink
12. **Interval Bike Shorts 3\"/>**

# Women's Spring 2023 Assortment #2



JACKETS

- 1. **Stealth Jacket 2.0**  
Black  
Bright Lime
- 2. **Vamos Track Jacket**  
Forest Green
- 3. **Navigator Hybrid Vest**  
Black

SHIRTS / TANKS

- 4. **Sprinter Tee**  
Bright Lime  
Black
- 5. **Qualifier Tee**  
Black Heather  
Grey Mist Heather
- 6. **Dash Tee**  
Deep Teal Stripe
- 7. **Qualifier Tank**  
Black Heather
- 8. **Interval Crop Top**  
Black  
White
- 9. **Tempo 1/4 Zip Long Sleeve**  
Grey Mist
- 10. **365 Hoodie**  
Dark Charcoal
- 11. **Dash Long Sleeve**  
Solid Black

SHORTS / JOGGERS

- 12. **Front Runner Shorts**  
Black
- 13. **Interval Bike Shorts 3"/6"**  
Bright Lime
- 14. **Stride Shorts**  
Black
- 15. **Essential Shorts**  
Black
- 16. **Essential Shorts Printed**  
Teal Camo
- 17. **Crossover Shorts**  
Black
- 18. **Crossover Tights**  
Black
- 19. **365 Jogger**  
Dark Charcoal

# Women's Spring 2023 Assortment #3



- JACKET**
- Stealth Jacket 2.0**  
Black  
White
  - Vamos Track Jacket**  
Plum
  - Navigator Hybrid Vest**  
Grey Mist
- SHIRTS / TANKS**
- Sprinter Tee**  
Black  
White
  - Qualifier Tee**  
Baja Purple Heather
  - Dash Tee**  
Baja Purple
  - Qualifier Tank**  
Grey Mist Heather
  - Interval Crop Top**  
White  
Baja Purple
  - Rise Long Sleeve**  
Baja Purple
  - Tempo 1/4 Zip Long Sleeve**  
Sodalite Blue
  - Dash Long Sleeve**  
Plum Stripe
  - 365 Hoodie**  
Baja Purple
- SHORTS / JOGGERS**
- Front Runner Shorts**  
White
  - Interval Bike Shorts 3"/6"**  
Sodalite Blue
  - Stride Shorts**  
Grey Mist  
Sodalite Blue
  - Essential Shorts**  
Baja Purple
  - Essential Shorts Printed**  
Purple Abstract
  - 365 Shorts**  
Baja Purple
  - Crossover Shorts**  
Baja Purple
  - Interval Running Tights**  
Black
  - 365 Jogger**  
Baja Purple



# Women's Spring 2023 Assortment #4



JACKETS

- 1. **Stealth Jacket 2.0**  
Deep Blue
- 2. **Vamos Track Jacket**  
Sailor Blue
- 3. **Navigator Hybrid Vest**  
Deep Blue

SHIRTS / TANKS

- 4. **Sprinter Tee**  
Deep Blue
- 5. **Qualifier Tee**  
Black Heather  
Grey Mist Heather
- 6. **Dash Tee**  
Black  
Sailor Blue Stripe
- 7. **Qualifier Tank**  
Black Heather
- 8. **Sprinter Sleeveless Tee**  
Black  
Deep Blue
- 9. **Interval Crop Top**  
Black
- 10. **Tempo 1/4 Zip Long Sleeve**  
Black
- 11. **365 Hoodie**  
Sailor Blue
- 12. **Dash Long Sleeve**  
Sailor Blue Stripe

SHORTS / JOGGERS

- 13. **Front Runner Shorts**  
Black
- 14. **Interval Bike Shorts 3"/6"**  
Black
- 15. **Stride Shorts**  
Grey Mist
- 16. **Essential Shorts**  
Sailor Blue
- 17. **Essential Shorts Printed**  
Blue Abstract
- 18. **365 Shorts**  
Sailor Blue
- 19. **Crossover Shorts**  
Sailor Blue
- 20. **Crossover Tights**  
Sailor Blue
- 21. **365 Jogger**  
Sailor Blue

## HANDHELDS



ExoDraw 2.0 Insulated  
18oz  
Pg. 19



ExoShot Lite 14oz  
Pg. 19



ExoDraw 2.0 18oz  
Pg. 19



ExoShot 2.0 14oz  
Pg. 19



QuickSqueeze View  
Insulated  
Pg. 21



QuickSqueeze Insulated  
18oz  
Pg. 21



QuickSqueeze Insulated  
12oz  
Pg. 21



QuickSqueeze 22oz  
Pg. 23



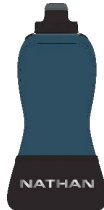
QuickSqueeze 18oz  
Pg. 23



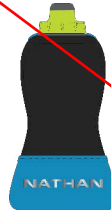
QuickSqueeze 12oz  
Pg. 23



QuickSqueeze Lite  
Insulated 12oz  
Pg. 25



QuickSqueeze Lite 18oz  
Pg. 25



QuickSqueeze Lite 12oz  
Pg. 25

## STORAGE BELTS



The Adjustable Fit Zipster  
2.0  
Pg. 27



The Zipster Lite  
Pg. 27



Marathon Pak 2.0  
Pg. 28



5K Pak  
Pg. 28



Race Number Nutrition  
Waistbelt  
Pg. 28



Mirage Pak Plus  
Pg. 29



Mirage Pak  
Pg. 29

## PHONE CARRIERS



SonicStorm  
Pg. 30



StrideSport  
Pg. 30



Super 5K  
Pg. 30



Vista Handheld  
Phone Carrier  
Pg. 31



Vista Arm Sleeve  
Phone Carrier  
Pg. 31

## LIGHTING



HyperNight Laser  
Light Vest  
Pg. 33



Terra Fire 400RX  
Runner's Hand Torch  
Pg. 34



Terra Fire 300R  
Runner's Hand Torch  
Pg. 34



Zephyr Trail 200R  
Runner's Hand Torch  
Pg. 34



Neutron Fire RX  
Runner's Headlamp  
Pg. 35



Luna Fire 250RX  
Chest / Waist Light  
Pg. 35



Neutron Fire R  
Runner's Headlamp  
Pg. 35



HyperBrite RX  
Pg. 36



HyperBrite Mini 2 Pack  
Pg. 36



HyperBrite Orb  
Pg. 36



StrobeLight  
Pg. 37



StrobeLight Candy Jar  
Pg. 37



StrobeLight 2 Pack  
Pg. 37



LightBender RX  
Pg. 38



LightBender Mini R  
Pg. 38



## ALARMS



SaferRun RipCord Siren +  
Strobe Light  
Pg. 39



SaferRun RipCord Siren  
Personal Alarm  
Pg. 39

## REFLECTIVE



Streak  
Pg. 40



Vibe Reflective Vest  
Pg. 40



Reflex Bands Pair  
Pg. 41

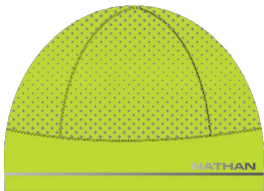


Reflective Sticker 2-Pack  
Pg. 41



Ankleband Pair  
Pg. 41

## HYPERNIGHT



HyperNight Reflective  
Ponytail Beanie  
Pg. 42



HyperNight Reflective  
Beanie  
Pg. 42



HyperNight Reflective  
Headband  
Pg. 42



HyperNight Reflective  
Convertible Mitt  
Pg. 43



HyperNight Reflective  
Glove  
Pg. 43

## SUNGLASSES



Summit Polarized  
Sunglasses  
Pg. 45



Sunrise Polarized  
Sunglasses  
Pg. 45



Adventure Polarized  
Sunglasses  
Pg. 45

## FOOTWEAR



Speed Tab Low Cut Socks  
Pg. 46



Knee High  
Compression Socks  
Pg. 47



Reflective Run Laces  
Pg. 47



Run Laces  
Pg. 47

## POWER WASH



Power Wash Performance Detergent 64oz  
Pg. 48



Power Wash Performance Detergent 42oz  
Pg. 48



Power Wash Performance Detergent 3 Pack - 1/2oz  
Pg. 48

## RUNCOOL



RunCool Ice Run Hat  
Pg. 48

## HYDRATION ACCESSORIES



1.6 Liter Insulated Hydration Bladder  
Pg. 49



1.8 Liter Hydration Bladder  
Pg. 49



2.0 Liter Hydration Bladder  
Pg. 49



1.5 Liter Hydration Bladder  
Pg. 49



1.8 Liter QuickStart Hydration Bladder  
Pg. 49



18oz Insulated Soft Flask  
Pg. 50



20oz Soft Flask  
Pg. 50



18oz Soft Flask  
Pg. 50



14oz Soft Flask  
Pg. 50



Reusable Race Day Cup  
Pg. 51



Push-Pull Cap Flask  
Pg. 51



Extended Straw  
Pg. 51



Race Caps  
Pg. 51

## MEN'S APPAREL - RACE DAY



Stealth Jacket 2.0  
Pg. 56



Front Runner Shorts 3.0  
Pg. 57



Rise Long Sleeve 2.0  
Pg. 58



Rise Tee 2.0  
Pg. 59

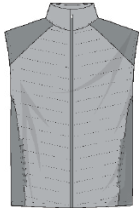


Sprinter Tank  
Pg. 59

## MEN'S APPAREL - TRAINING



Vamos Track Jacket  
Pg. 60



Navigator Hybrid Vest  
Pg. 60



Tempo 1/4 Zip Long  
Sleeve 2.0  
Pg. 61



Adventure Jacket  
Pg. 62



Adventure Jogger  
Pg. 62



Qualifier Tee  
Pg. 63



Qualifier Sleeveless Tee  
Pg. 63



Essential Shorts 7" 2.0  
Printed  
Pg. 64



Essential Shorts 7" 2.0  
Pg. 65



Essential Shorts 9" 2.0  
Pg. 65



Stride Training Shorts  
Pg. 66



Essential Shorts 7" 2.0  
Unlined  
Pg. 67



Essential Shorts 9" 2.0  
Unlined  
Pg. 67

## MEN'S APPAREL - 365 COMFORT



Dash Long Sleeve  
Pg. 68



Dash Tee 2.0  
Pg. 69



365 Hoodie  
Pg. 70



365 Jogger  
Pg. 70



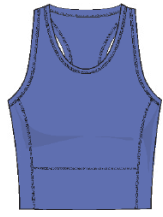
365 Shorts  
Pg. 71



## WOMEN'S APPAREL - RACE DAY



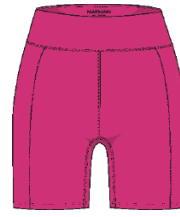
Women's Stealth Jacket  
2.0  
Pg. 72



Women's Interval  
Crop Top  
Pg. 73



Women's Interval  
Running Tights  
Pg. 73



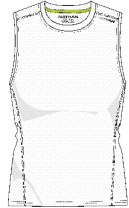
Women's Interval  
Bike Shorts 3"  
Pg. 74



Women's Interval  
Bike Shorts 6"  
Pg. 74



Women's Sprinter Tee  
Pg. 75



Women's Sprinter  
Sleeveless Tee  
Pg. 75



Women's Rise  
Long Sleeve  
Pg. 76



Women's Front Runner  
Shorts 3.0  
Pg. 77

## WOMEN'S APPAREL - TRAINING



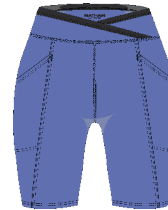
Women's Vamos  
Track Jacket  
Pg. 78



Women's Navigator  
Hybrid Vest  
Pg. 78



Women's Tempo 1/4 Zip  
Long Sleeve 2.0  
Pg. 79



Women's Crossover  
Shorts 2.0  
Pg. 80



Women's Crossover Tights  
Pg. 80



Women's Qualifier Tee  
Pg. 81



Women's Qualifier Tank  
Pg. 81



Women's Stride  
Training Shorts  
Pg. 82



Women's Essential  
Shorts 2.0 Printed  
Pg. 83



Women's Essential  
Shorts 2.0  
Pg. 83

## WOMEN'S APPAREL - 365 COMFORT



Women's Dash  
Long Sleeve  
Pg. 84



Women's Dash Tee 2.0  
Pg. 84



Women's 365 Hoodie  
Pg. 85



Women's 365 Jogger  
Pg. 85



Women's 365 Shorts  
Pg. 86

## APPAREL SIZE CHART

WOMEN'S	Size	Bust	Waist	Hip	EU size
XS	0/2	32" - 33"	25" - 26"	35" - 36"	34
S	4/6	34" - 35"	27" - 28"	37" - 38"	36
M	8/10	36" - 38"	29" - 31"	39" - 41"	40
L	12/14	39" - 41"	32" - 34"	42" - 44"	42/44
XL	16/18	42" - 45"	35" - 38"	45" - 48"	46/48

MEN'S	Chest	Waist	Hip	EU size
S	37" - 39"	30" - 32"	36" - 38"	44 - 45
M	40" - 42"	33" - 35"	39" - 41"	46 - 48
L	43" - 45"	36" - 38"	42" - 44"	49 - 51
XL	46" - 48"	39" - 41"	45" - 47"	52 - 54
2XL	49" - 51"	42" - 44"	48" - 50"	55 - 57

## SOCK SIZE CHART

WOMEN'S	Shoe
S	4 - 6.5
M	7 - 9.5
L	10 - 14

MEN'S	Shoe
S	3 - 5.5
M	6 - 8.5
L	9 - 13

## HYDRATION PACK / VEST SIZE CHART

WOMEN'S SPECIFIC COMPRESSION FIT	Sternum	Bust
XXS	28" - 29"	32"
XS	30" - 31"	34"
S	32" - 33"	36"
M	34" - 35"	38"
L	36" - 37"	40"
XL	38" - 39"	42"

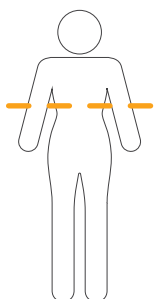
UNISEX COMPRESSION FIT	Sternum
XS	33" - 35"
S	36" - 38"
M	39" - 41"
L	42" - 44"
XL	45" - 47"

WOMEN'S SPECIFIC ADAPTIVE FIT	Sternum	Bust
XXS-M	26" - 33"	30" - 36"
L-XXL	33" - 41"	37" - 44"
1X-3X	41" - 50"	45" - 51"

UNISEX ADAPTIVE FIT	Sternum
XS-M	30" - 38"
L-XXL	38" - 48"
1X-3X	48" - 58"

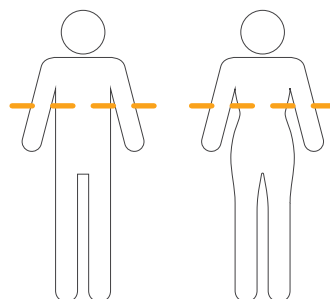
### WOMEN'S SPECIFIC

Measure circumference of bust and sternum under bust



### UNISEX

Measure circumference of chest at bottom of sternum



### UNISEX ONE SIZE FITS MOST

	Sternum
OSFM	22" - 46"
EXPANDED	22" - 61"





23 SHOCK DOCTOR  
CATALOG



23 MCDAVID CATALOG



23 UA CATALOG



23 CUTTERS CATALOG



23 NATHAN SS CATALOG



GLUKOS  
PRODUCT GUIDE

# NATHAN

©2022 United Sports Brands  
11488 Slater Avenue  
Fountain Valley, CA 92708  
www.nathansports.com