



**NIKE
KIDS**





FOOTBALL	4
RUNNING	10
VOLLEYBALL	12
BASKETBALL	18
BASEBALL	28
SOFTBALL	38
LACROSSE	40
SOCCER	48
ESSENTIALS	79
EQUIPMENT	87



NIKE KIDS




MOVE TO ZERO



Helping Protect The Future Of Sport For All Athletes*

Move to Zero is Nike's journey toward zero carbon and zero waste to help protect the future of sport. We exist to serve athletes everywhere and that's why we're on a mission to help ensure a healthy planet. For us, there is no finish line.

[NikeTeam.com](https://www.nike.com) will now display a sunburst logo next to products made with sustainable materials.

Look for this logo  Sustainable Materials to find products made with at least 50% sustainable materials by weight, exclusive of trims. Sustainable materials include recycled polyester or organic cotton.

Recycled polyester reduces carbon emissions and waste.

Organic cotton is grown without synthetic fertilizers and with less water than conventional cotton.



For more information on Nike Sustainability please visit nike.com/sustainability or purpose.nike.com.

**BOYS NIKE CUSTOM VAPOR VARSITY JERSEY
FJ9607 BLANK SKILL SLEEVE \$80.00**

SIZES: S, M, L, XL, 2XL
FABRIC: Body/panels lining: 0-100% nylon/0-100% polyester. Panels: 86-87% nylon/13-14% spandex.
OFFER DATE: 04/01/24
END DATE: 05/01/28

Help your team look and play their best in the Nike Vapor Varsity Jersey. Mesh stretch fabric adds breathability and helps players move freely. An elastic waistband helps minimize areas opponents can grab while a lower back hem adds coverage. Highly customizable to match your team colors.
Body width: 16.75", Body length: 23" (size medium).

 **CUSTOMIZE IT**
For complete embellishment and pricing options please visit [NIKETEAM.COM](https://www.niketeam.com)



**BOYS NIKE DIGITAL VAPOR PRO JERSEY
FJ9598 BLANK SKILL SLEEVE \$130.00**

SIZES: XS, S, M, L, XL, 2XL
FABRIC: Body/panels lining: 87% polyester/13% spandex.
OFFER DATE: 04/01/24
END DATE: 01/15/29

The Nike Vapor Pro Jersey outfit players in comfortable, stretch fabric for full-speed play. Elastic hem on bottom and sleeves help keep the jersey in place during full speed play. Skill sleeve design tightly fuses with pads for a streamlined feel that helps arms move freely. Jersey is highly customizable to match your team colors. This style is made with recycled knit fabric.
Body width: 16.75", Body length: 23" (size medium).

 **CUSTOMIZE IT**
For complete embellishment and pricing options please visit NIKETEAM.COM



**BOYS NIKE DIGITAL VAPOR PRO PANT
FJ9599 STANDARD LENGTH \$95.00**

SIZES: XS, S, M, L, XL, 2XL
FABRIC: Body/panels lining: 87% polyester/13% spandex. Mesh: 100% polyester.
OFFER DATE: 04/01/24
END DATE: 01/15/29

The Nike Vapor Pro Football Pants outfit players in comfortable, stretch fabric for full-speed play. Its fully sublimated printing helps your team show their true colors with the ability to make unique designs. This style is made with recycled knit fabric.
Hip width: 14", Inseam length: 10.25" (size medium).

 **CUSTOMIZE IT**
For complete embellishment and pricing options please visit NIKETEAM.COM



PADS AND BELT ARE NOT INCLUDED WITH THIS STYLE.

**BOYS NIKE STOCK ALPHA PRO JERSEY (SKILL)
DV3972 \$78.00**

SIZES: S, M, L, XL, 2XL
FABRIC: Body: 86% polyester/14% spandex. Mesh: 100% polyester. Insets: 86% nylon/14% spandex.
OFFER DATE: 04/01/23
END DATE: 04/01/29

Step on to the field in the game-ready feel and professional look of the Nike Alpha Pro Jersey. Mesh side panels and lightweight stretch fabric help keep you cool and moving freely through the intensity of high-heat gridiron action. A tight-fitting design with cap sleeves and an elastic hem lies close to your body to cut down on areas that can be grabbed by your opponents. Choose from a variety of color combinations and customize the numbering to outfit your team.

Body width: 16.5", Body length: 23" (size medium).

- | | | |
|---|--|---------------------------------------|
| 012 Black/(White) | 061 Team Anthracite/(White) | 106 White/Black/(White) |
| 342 Team Dark Green/White/(White) | 420 Team Navy/White/(White) | 494 Team Royal/White/(White) |
| 546 Team Purple/White/(White) | 612 Team Cardinal/White/(White) | 658 Team Scarlet/White/(White) |
| 670 Team Dark Maroon/White/(White) | | |

 **CUSTOMIZE IT**
 For complete embellishment and pricing options please visit NIKETEAM.COM



**BOYS NIKE STOCK ALPHA JERSEY (SKILL)
FJ9611 \$60.00**

SIZES: S, M, L, XL, 2XL
FABRIC: Color: Body/panel lining: 100% nylon. Panels: 86% nylon/14% elastane.
 White: Body/panel lining: 100% polyester. Panels: 87% polyester/13% elastane.
OFFER DATE: 04/01/24
END DATE: 04/01/29

The Nike Alpha Varsity jersey brings ventilated comfort to the field. Stretch fabric and skill sleeve design tightly fuse with pads for a streamlined feel that helps arms move freely. The elastic waistband and sleeves help minimize areas opponents can grab.

Body width: 16.75" (size large), Body length: 23" (all sizes).

- | | | |
|---------------------------------|---------------------------------|-----------------------------------|
| 010 Black/(White) | 060 Anthracite/(White) | 100 White/(Black) |
| 341 Gorge Green/(White) | 419 College Navy/(White) | 480 Game Royal/(White) |
| 545 Field Purple/(White) | 610 Team Maroon/(White) | 657 University Red/(White) |
| 669 Deep Maroon/(White) | | |

 **CUSTOMIZE IT**
 For complete embellishment and pricing options please visit [NIKETEAM.COM](https://www.niketeam.com)



**BOYS NIKE STOCK RECRUIT PRACTICE JERSEY
DJ5739 \$27.00**

SIZES: S, M, L, XL
FABRIC: 100% polyester.
OFFER DATE: 04/01/22
END DATE: 04/01/28

Suit up in the Nike Recruit Practice Jersey. Made with mesh fabric for ultimate breathability, this cool, comfortable design lets you lean into your practice sessions and embrace the grind. Customize the colors for an on-field look that makes your team proud.

Body width: 16.5", Body length: 20.25" (size medium).

- | | | |
|-------------------------------------|-----------------------------------|---------------------------------|
| 010 Black/(White) | 052 Team Blue Grey/(Black) | 100 White/(Black) |
| 341 Team Dark Green/(White) | 419 Team Navy/(White) | 493 Team Royal/(White) |
| 545 Team Purple/(White) | 610 Team Cardinal/(White) | 657 Team Scarlet/(White) |
| 669 Team Dark Maroon/(White) | | |



 **CUSTOMIZE IT**
 For complete embellishment and pricing options please visit NIKETEAM.COM

**KIDS NIKE STOCK FLAG FOOTBALL JERSEY
DJ6594 \$22.00**

SIZES: S, M, L, XL
FABRIC: 100% polyester.
OFFER DATE: 04/01/22
END DATE: 04/01/29

The Nike Flag Football Jersey blends comfort with functionality and is made with at least 50% recycled polyester fibers. Dri-FIT technology and mesh fabric in a body-hugging design help keep you dry and comfortable without giving your opponent anything to grab onto. Customize the colors to create a look that's just right for your team.

Body width: 16.5", Body length: 22" (size medium).

- | | | |
|------------------------------------|-------------------------------------|----------------------------------|
| 010 Black/(White) | 052 Team Blue Grey/(Black) | 100 White/(Black) |
| 341 Team Dark Green/(White) | 419 Team Navy/(White) | 448 Valor Blue/(White) |
| 493 Team Royal/(White) | 545 Team Purple/(White) | 610 Team Cardinal/(White) |
| 657 Team Scarlet/(White) | 669 Team Dark Maroon/(White) | 716 Sundown/(White) |
| 820 Team Orange/(White) | | |

 Sustainable Materials



 **CUSTOMIZE IT**
 For complete embellishment and pricing options please visit NIKETEAM.COM

**BOYS NIKE DF STOCK RECRUIT PANT
DJ5731 \$47.00**

SIZES: XS, S, M, L, XL, 2XL, 3XL

FABRIC: Body/panels lining: 100% polyester. Pad: 100% ethylene vinyl acetate.

OFFER DATE: 04/01/23

END DATE: 04/01/29

Take the field ready to give it your all in the Nike Recruit Pants. They're made from lightweight, stretchy fabric with sweat-wicking power to help keep you dry and moving freely when the game heats up. With integrated pads shaped for a comfortable fit, you'll be prepared for a performance you can be proud of. Choose from 6 different colors to outfit your team. Nike Dri-FIT technology moves sweat away from your skin for quicker evaporation, helping you stay dry and comfortable. Lightweight knit fabric stretches with you to let you move naturally. Thigh, knee, hip and tailbone pads are shaped for an optimal fit, without compromising on coverage. A body-hugging fit is designed to help keep the padding in place and close to the body. Belt at the waist lets you dial in your perfect fit to maximize comfort. Elastic at hems.

Hip width: 15", Inseam length: 11.75" (size medium).

- | | | |
|------------------------------|------------------------------------|---------------------------------|
| 010 Black/(White) | 060 Team Anthracite/(White) | 100 White/(Black) |
| 419 Team Navy/(White) | 493 Team Royal/(White) | 657 Team Scarlet/(White) |



PANTS INCLUDE INTEGRATED PADS.

NEW
BOYS NIKE DRI-FIT STOCK FAST SINGLET
FZ6212 \$35.00

SIZES: S, M, L, XL
FABRIC: 100% polyester.
OFFER DATE: 01/01/25
END DATE: 01/01/29

Sweat-wicking technology and breathable knit fabric helps keep runners dry and cool. Customizable with team colors and logo. This product is made with 100% recycled polyester fibers.
Body width: 15", Body length: 20.25" (size medium).

- | | | |
|---------------------------------|-----------------------------------|--------------------------------|
| 010 Black/(White) | 060 Anthracite/(White) | 100 White/(Black) |
| 341 Gorge Green/(White) | 419 College Navy/(White) | 448 Valor Blue/(White) |
| 493 Game Royal/(White) | 545 Field Purple/(White) | 610 Team Maroon/(White) |
| 613 Team Crimson/(White) | 657 University Red/(White) | 669 Deep Maroon/(White) |
| 820 Team Orange/(White) | | |



NEW
BOYS NIKE DRI-FIT STOCK FAST 2IN SHORT
FZ6340 \$30.00

SIZES: XS, S, M, L, XL
FABRIC: 100% polyester.
OFFER DATE: 01/01/25
END DATE: 01/01/29

Side splits lets your runners move freely, while a sweat-wicking liner helps ensure coverage and a comfortable fit. Customize with team colors and logo. This product is made with 100% recycled polyester.
Hip width: 17.5" (size medium), Inseam length: 2" (all sizes).

- | | | |
|-----------------------------------|---------------------------------|---------------------------------|
| 010 Black/(White) | 341 Gorge Green/(White) | 419 College Navy/(White) |
| 493 Game Royal/(White) | 545 Field Purple/(White) | 610 Team Maroon/(White) |
| 657 University Red/(White) | | |



SIDE VIEW

NEW
GIRLS NIKE DRI-FIT STOCK FAST SINGLET
FZ6351 \$35.00

SIZES: XS, S, M, L, XL
FABRIC: 100% polyester.
OFFER DATE: 01/01/25
END DATE: 01/01/29

Sweat-wicking technology and breathable knit fabric helps keep runners dry and cool. Customizable with team colors and logo. This product is made with 100% recycled polyester fibers.

Body width: 15", Body length: 20.25" (size medium).

- | | | |
|---------------------------------|-----------------------------------|--------------------------------|
| 010 Black/(White) | 060 Anthracite/(White) | 100 White/(Black) |
| 341 Gorge Green/(White) | 419 College Navy/(White) | 448 Valor Blue/(White) |
| 493 Game Royal/(White) | 545 Field Purple/(White) | 610 Team Maroon/(White) |
| 613 Team Crimson/(White) | 657 University Red/(White) | 669 Deep Maroon/(White) |
| 820 Team Orange/(White) | | |



GIRLS NIKE DRY TEMPO SHORT
836317 \$30.00

SIZES: XS, S, M, L, XL
FABRIC: Body: 100% polyester. Liner: 100% recycled polyester.
OFFER DATE: 01/01/17

Lightweight woven body with mesh side panel, Dri-FIT liner and drop in pocket at waist. Body fabric is recycled fabrication. Recreational runner to elite athlete.

Hip width: 17.5", Inseam length: 3.25" (size medium).

- | | | |
|--|---|---|
| 012 Black/White/White/(White) | 019 Black/Black/Black/(Black)* | 342 Dark Green/White/White/(White) |
| 420 Navy/White/White/(White) | 494 Royal/White/White/(White) | 499 Royal/Royal/Black/(White)* |
| 546 Purple/White/White/(White) | 612 Cardinal/White/White/(White) | 655 Scarlet/Scarlet/Black/(White)* |
| 658 Scarlet/White/White/(White) | | |

*Printed Binding



NEW
GIRLS NIKE DIGITAL ACE JERSEY LS
IF2162 BLANK \$75.00

SIZES: XS, S, M, L, XL
FABRIC: Body/sleeves: 85% polyester/15% elastane. Side panels: 80% polyester/20% elastane.
OFFER DATE: 04/01/26
END DATE: 04/01/30

Raglan sleeves provide players with full range of motion. • Mesh paneling provides breathability to keep players cool. • Curved hem provides coverage. • Lightweight recycled knit jersey has a smooth, soft feel. • Slim fit sits close to the body. **Body width: 15.75", Body length: 21.25" (size medium).**



Sustainable Materials



CUSTOMIZE IT
 For complete embellishment and pricing options please visit NIKETEAM.COM

NEW
GIRLS NIKE DIGITAL ACE JERSEY SS
IF2179 BLANK \$65.00

SIZES: XS, S, M, L, XL
FABRIC: Body/sleeves: 85% polyester/15% elastane. Side panels: 80% polyester/20% elastane.
OFFER DATE: 04/01/26
END DATE: 04/01/30

Raglan sleeves provide players with full range of motion. • Mesh paneling provides breathability to keep players cool. • Curved hem provides coverage. • Lightweight recycled knit jersey has a smooth, soft feel. • Slim fit sits close to the body. **Body width: 15.75", Body length: 21.25" (size medium).**



Sustainable Materials



CUSTOMIZE IT
 For complete embellishment and pricing options please visit NIKETEAM.COM

NEW
GIRLS NIKE STOCK ACE JERSEY LS
IF2184 \$45.00



Sustainable Materials

SIZES: XS, S, M, L, XL
FABRIC: Body/sleeves: 85% polyester/15% elastane. Side panels: 80% polyester/20% elastane.
OFFER DATE: 04/01/26
END DATE: 04/01/30

Raglan sleeves provide players with full range of motion. • Mesh paneling provides breathability to keep players cool. • Curved hem provides coverage. • Lightweight recycled knit jersey has a smooth, soft feel. • Slim fit sits close to the body. **Body width: 15.75", Body length: 21.25" (size medium).**



- | | | |
|---|---------------------------------------|---|
| 010 Black/White/(White) | 060 Anthracite/White/(White) | 100 White/Black/(Black) |
| 341 Gorge Green/White/(White) | 419 College Navy/White/(White) | 493 Game Royal/White/(White) |
| 504 Field Purple/White/(White) | 610 Team Maroon/White/(White) | 635 Bright Crimson/White/(White) |
| 657 University Red/White/(White) | 669 Deep Maroon/White/(White) | 702 Volt/Black/(Black) |

NEW
GIRLS NIKE STOCK ACE JERSEY SS
IF2189 \$35.00



Sustainable Materials

SIZES: XS, S, M, L, XL
FABRIC: Body/sleeves: 85% polyester/15% elastane. Side panels: 80% polyester/20% elastane.
OFFER DATE: 04/01/26
END DATE: 04/01/30

Raglan sleeves provide players with full range of motion. • Mesh paneling provides breathability to keep players cool. • Curved hem provides coverage. • Lightweight recycled knit jersey has a smooth, soft feel. • Slim fit sits close to the body. **Body width: 15.75", Body length: 21.25" (size medium).**



- | | | |
|---|---------------------------------------|---|
| 010 Black/White/(White) | 060 Anthracite/White/(White) | 100 White/Black/(Black) |
| 341 Gorge Green/White/(White) | 419 College Navy/White/(White) | 493 Game Royal/White/(White) |
| 504 Field Purple/White/(White) | 610 Team Maroon/White/(White) | 635 Bright Crimson/White/(White) |
| 657 University Red/White/(White) | 669 Deep Maroon/White/(White) | 702 Volt/Black/(Black) |

NEW
GIRLS NIKE STOCK ACE JERSEY SL
IF2270 \$35.00



Sustainable Materials

SIZES: XS, S, M, L, XL
FABRIC: Body: 85% polyester/15% elastane. Side panels: 80% polyester/20% elastane.
OFFER DATE: 04/01/26
END DATE: 04/01/30

Stretchy, elastic fold over finish at armholes for a distraction-free fit. • Mesh paneling provides breathability to keep players cool. • Curved hem provides coverage. • Lightweight recycled knit jersey has a smooth, soft feel. • Slim fit sits close to the body. **Body width: 14.75", Body length: 21.25" (size medium).**



- | | | |
|---|---------------------------------------|---|
| 010 Black/White/(White) | 060 Anthracite/White/(White) | 100 White/Black/(Black) |
| 341 Gorge Green/White/(White) | 419 College Navy/White/(White) | 493 Game Royal/White/(White) |
| 545 Field Purple/White/(White) | 610 Team Maroon/White/(White) | 635 Bright Crimson/White/(White) |
| 657 University Red/White/(White) | 669 Deep Maroon/White/(White) | 702 Volt/Black/(Black) |

**GIRLS NIKE STOCK ELITE LS JERSEY
DJ8658 \$57.00**

SIZES: XS, S, M, L, XL
FABRIC: Body: 89% polyester/11% spandex. Insets: 80% polyester/20% spandex.
OFFER DATE: 04/01/22
END DATE: 04/01/27

Made with at least 75% recycled polyester fibers, the Nike Elite Jersey is built to compete. Stretchy, comfortable fabric employs sweat-wicking technology to keep you dry and comfortable so you can focus on giving your best. Customize the look with colors that show your team's spirit.

Body width: 15.25", Body length: 20.5" (size medium).

Part of Stock Embellishment Program.

- | | | |
|--|--|---------------------------------------|
| 012 Black/White/(White) | 061 Team Anthracite/White/(White) | 100 White/White/(Black) |
| 342 Team Dark Green/White/(White) | 420 Team Navy/White/(White) | 494 Team Royal/White/(White) |
| 546 Team Purple/White/(White) | 612 Team Cardinal/White/(White) | 658 Team Scarlet/White/(White) |



**GIRLS NIKE STOCK ELITE SS JERSEY
DJ8665 \$47.00**

SIZES: XS, S, M, L, XL
FABRIC: Body: 89% polyester/11% spandex. Insets: 80% polyester/20% spandex.
OFFER DATE: 04/01/22
END DATE: 04/01/27

Made with at least 75% recycled polyester fibers, the Nike Elite Jersey is built to compete. Stretchy, comfortable fabric employs sweat-wicking technology to keep you dry and comfortable so you can focus on giving your best. Customize the look with colors that show your team's spirit.

Body width: 15.25", Body length: 20.5" (size medium).

Part of Stock Embellishment Program.

- | | | |
|--|--|---------------------------------------|
| 012 Black/White/(White) | 061 Team Anthracite/White/(White) | 100 White/White/(Black) |
| 342 Team Dark Green/White/(White) | 420 Team Navy/White/(White) | 494 Team Royal/White/(White) |
| 546 Team Purple/White/(White) | 612 Team Cardinal/White/(White) | 658 Team Scarlet/White/(White) |



**GIRLS NIKE STOCK CLUB ACE LS JERSEY
CZ1469 \$45.00**



Sustainable Materials

SIZES: XS, S, M, L, XL
FABRIC: Main Body: 84% recycled polyester/16% elastane.
 Side Panels: 80% recycled polyester/20% elastane.
OFFER DATE: 04/01/21
END DATE: 04/01/26

Lightweight and streamlined, the Nike Stock Club Ace Volleyball Jersey is built for intense play during practice or game day. Its sweat-wicking fabric features mesh panels that help vent out excess heat and moisture.

Body length: 21.25" (size medium).
Part of Stock Embellishment Program.

- | | | |
|-------------------------------------|--------------------------------------|---------------------------------------|
| 012 Black/White/(White) | 061 Anthracite/White/(White) | 100 White/Black/(Black) |
| 342 Dark Green/White/(White) | 420 Navy/White/(White) | 494 Royal/White/(White) |
| 546 Purple/White/(White) | 612 Cardinal/White/(White) | 652 Pink Fire II/White/(White) |
| 658 Scarlet/White/(White) | 670 Dark Maroon/White/(White) | |



**GIRLS NIKE STOCK CLUB ACE SS JERSEY
CZ1472 \$35.00**



Sustainable Materials

SIZES: XS, S, M, L, XL
FABRIC: Main Body: 84% recycled polyester/16% elastane.
 Side Panels: 80% recycled polyester/20% elastane.
OFFER DATE: 04/01/21
END DATE: 04/01/26

Lightweight and streamlined, the Nike Stock Club Ace Volleyball Jersey is built for intense play during practice or game day. Its sweat-wicking fabric features mesh panels that help vent out excess heat and moisture.

Body length: 21.25" (size medium).
Part of Stock Embellishment Program.

- | | | |
|-------------------------------------|--------------------------------------|---------------------------------------|
| 012 Black/White/(White) | 061 Anthracite/White/(White) | 100 White/Black/(Black) |
| 342 Dark Green/White/(White) | 420 Navy/White/(White) | 494 Royal/White/(White) |
| 546 Purple/White/(White) | 612 Cardinal/White/(White) | 652 Pink Fire II/White/(White) |
| 658 Scarlet/White/(White) | 670 Dark Maroon/White/(White) | |



NEW
GIRLS NIKE STOCK MATCH VB 7/8 TIGHT
HM6890 \$50.00

SIZES: XS, S, M, L, XL
FABRIC: Body: 82% recycled polyester/18% elastane. Gusset liner: 100% polyester.
 Inner lining: 89% nylon/11% elastane.
OFFER DATE: 04/01/26
END DATE: 04/01/30

Tight fit for a body-hugging look and feel. • Insights from college and high-school athletes led to an updated fit and fabric for improved on-court performance. • Updated high-rise waistband provides a snug, stay-put fit. • Increased length to 7/8 capris for a more comfortable fit under knee pads. • Smooth, stretchy fabric is thicker than previous seasons to increase durability and reduce opacity issues.
Hip width: 13.5", Inseam length: 21.25" (size medium).

- | | | |
|-----------------------------------|--------------------------------|---------------------------------|
| 010 Black/(White) | 060 Anthracite/(White) | 341 Gorge Green/(White) |
| 419 College Navy/(White) | 493 Game Royal/(White) | 545 Field Purple/(White) |
| 657 University Red/(White) | 669 Deep Maroon/(White) | |



NEW
GIRLS NIKE STOCK MATCH VB 3IN SHORT
HM6889 \$32.00

SIZES: XS, S, M, L, XL
FABRIC: Body: 82% recycled polyester/18% elastane. Gusset liner: 100% polyester.
 Inner lining: 89% nylon/11% elastane.
OFFER DATE: 04/01/26
END DATE: 04/01/30

Tight fit for a body-hugging look and feel. • Insights from college and high-school athletes led to an updated fit and fabric for improved on-court performance. • Updated high-rise waistband provides a snug, stay-put fit. • Smooth, stretchy fabric is thicker than previous seasons to increase durability and reduce opacity issues. **Hip width: 13.5", Inseam length: 3" (size medium).**

- | | | |
|-----------------------------------|--------------------------------|---------------------------------|
| 010 Black/(White) | 060 Anthracite/(White) | 341 Gorge Green/(White) |
| 419 College Navy/(White) | 493 Game Royal/(White) | 545 Field Purple/(White) |
| 657 University Red/(White) | 669 Deep Maroon/(White) | |



**GIRLS NIKE STOCK HYPERELITE SHORT
CZ1640 \$37.00**

SIZES: XS, S, M, L, XL
FABRIC: Body: 80% polyester/20% spandex. Insets: 84% recycled polyester/16% spandex.
 Gusset lining: 80% polyester/20% spandex.
OFFER DATE: 04/01/20
END DATE: 04/01/26

The Nike Stock Hyper Elite Volleyball Shorts are made with stretchy sweat-wicking fabric for lasting comfort and locked-in support. **Hip width: 12.5", Inseam length: 2.25" (size medium).**

- | | | |
|----------------------------|--------------------------------|-------------------------------|
| 010 Black/(White) | 060 Anthracite/(White) | 341 Dark Green/(White) |
| 419 Navy/(White) | 493 Royal/(White) | 545 Purple/(White) |
| 657 Scarlet/(White) | 669 Dark Maroon/(White) | |



**GIRLS NIKE PERFORMANCE GAME SHORT
836323 \$27.00**

SIZES: XS, S, M, L, XL
FABRIC: 82% polyester/18% spandex.
OFFER DATE: 10/01/16
END DATE: 04/01/26

Performance Dri-FIT short with elastic waist band. Lined gusset and embroidered Swoosh design trademark at lower left leg. **Hip width: 12.5", Inseam length: 2.25" (size medium).**

- | | | |
|--------------------------|-------------------------------|-------------------------|
| 010 Black/(White) | 060 Anthracite/(White) | 419 Navy/(White) |
| 493 Royal/(White) | | |



**GIRLS NIKE STOCK CLUB ACE CAPRI
CZ1648 \$42.00**

SIZES: XS, S, M, L, XL
FABRIC: 80% polyester/20% spandex.
OFFER DATE: 04/01/21
END DATE: 04/01/26

The Nike Stock Club Ace Volleyball Capris are made with stretchy sweat-wicking technology for lasting comfort and locked-in support on the court. Flat seams help reduce distractions, so you can focus on the game. **Inseam length: 17.25" (size medium).**

- | | | |
|--------------------------|-------------------------------|-------------------------|
| 012 Black/(White) | 061 Anthracite/(White) | 420 Navy/(White) |
|--------------------------|-------------------------------|-------------------------|



NEW
KIDS NIKE DIGITAL ELITE HIGHLIGHT JERSEY
II3752 BLANK/SUBLIMATION \$65.00

SIZES: XS, S, M, L, XL
FABRIC: 100% polyester.
OFFER DATE: 07/01/26
END DATE: 04/15/29

Lightweight, mesh fabric offer durable breathability and moves sweat away from the players' skin for quick evaporation, helping them stay dry and comfortable. • Mesh on the back and sides provides breathability to help keep players cool. • Standard fit. • Customizable prints on sides.
Body width: 16", Body length: 21" (size medium).



Sustainable Materials



NEW
KIDS NIKE DIGITAL ELITE HIGHLIGHT SHORT
II3753 BLANK/SUBLIMATION \$65.00

SIZES: XS, S, M, L, XL
FABRIC: 100% polyester.
OFFER DATE: 07/01/26
END DATE: 04/15/29

Lightweight, mesh fabric offer breathability and moves sweat away from the players' skin for quick evaporation, helping them stay dry and comfortable. • Standard fit. • Customizable prints on sides.
Hip width: 17.25", Inseam length: 5.5" (size medium).



Sustainable Materials



NEW
KIDS NIKE DIGITAL ELITE CLASSIC JERSEY
II1576 BLANK/SUBLIMATION \$65.00

SIZES: XS, S, M, L, XL
FABRIC: 100% polyester.
OFFER DATE: 07/01/26
END DATE: 04/15/29

Lightweight, mesh fabric offer durable breathability and moves sweat away from the players' skin for quick evaporation, helping them stay dry and comfortable. • Mesh on the back and sides provides breathability to help keep players cool. • Customizable prints on side panels. • Standard fit.
Body width: 16", Body length: 21" (size medium).



Sustainable Materials



NEW
KIDS NIKE DIGITAL ELITE CLASSIC SHORT
II1577 BLANK/SUBLIMATION \$65.00

SIZES: XS, S, M, L, XL
FABRIC: 100% polyester.
OFFER DATE: 07/01/26
END DATE: 04/15/29

Lightweight, mesh fabric offer durable breathability and moves sweat away from the players' skin for quick evaporation, helping them stay dry and comfortable. • Customizable prints on side panels. • Standard fit.
Hip width: 17.25", Inseam length: 5.5" (size medium).



Sustainable Materials



**BOYS NIKE DIGITAL DRI-FIT JUMPER JERSEY
FN2352 BLANK \$65.00**

SIZES: XS, S, M, L, XL
FABRIC: 100% polyester.
OFFER DATE: 07/01/23
END DATE: 04/15/26

Dress your team in what the pro's wear with the Nike Elite Jersey. We put advanced sweat-wicking technology in strategic, high-heat areas to help keep them cool and comfortable, and we streamlined the design for a slim, tailored fit. **Body width: 15.5", Body length: 21" (size medium).**

 **CUSTOMIZE IT**
 For complete embellishment and pricing options please visit [NIKETEAM.COM](https://www.niketeam.com)



**BOYS NIKE DIGITAL DRI-FIT JUMPER SHORT
FN2355 BLANK \$65.00**

SIZES: XS, S, M, L, XL
FABRIC: 100% polyester.
OFFER DATE: 07/01/23
END DATE: 04/15/26

Dress your team in what the pro's wear with the Nike Elite Shorts. We put advanced sweat-wicking technology in strategic, high-heat areas to help keep them cool and comfortable, and we streamlined the design for a slim, tailored fit. **Hip width: 17.25", Inseam length: 6.5" (size medium).**

 **CUSTOMIZE IT**
 For complete embellishment and pricing options please visit [NIKETEAM.COM](https://www.niketeam.com)



**BOYS NIKE DIGITAL DRI-FIT REVERSIBLE
BUCKET JERSEY
DN6039 BLANK \$80.00**

SIZES: XS, S, M, L, XL
FABRIC: 100% polyester.
OFFER DATE: 07/01/22
END DATE: 04/15/28

Reversible jersey. Fully sublimated graphics. Custom team logo or Nike standard letter inside Nike basketball design. Stitched down Nike Team jock tag. **Body width: 16.5", Body length: 21.75" (size medium).**



CUSTOMIZE IT

For complete embellishment and pricing options please visit NIKETEAM.COM

**BOYS NIKE DIGITAL DRI-FIT MESH
BUCKET SHORT
DN6152 BLANK \$65.00**

SIZES: XS, S, M, L, XL
FABRIC: 100% polyester.
OFFER DATE: 07/01/22
END DATE: 04/15/28

Loosely based on Villanova's promo practice short. Silicone gripper elastic inner waistband with inner drawcords. Fully sublimated graphics. Not a reversible short, but will match up to reversible jersey. **Hip width: 17.5", Inseam length: 7" (size medium).**



CUSTOMIZE IT

For complete embellishment and pricing options please visit NIKETEAM.COM

**BOYS NIKE STOCK BLOCK JERSEY
FN2360 \$55.00**

SIZES: XS, S, M, L, XL
FABRIC: 100% polyester.
OFFER DATE: 07/01/23
END DATE: 07/01/28

Keep things simple and fresh with the Nike Block Jersey. Sweat-wicking fabric helps keep your players dry and comfortable. Slim-cut jersey limits distractions so your players can keep their heads in the game.
Body width: 15.5", Body length: 21" (size medium).

- | | |
|--|--|
| 012 Black/White/(White) | 061 Team Anthracite/White/(White) |
| 104 White/Team Cardinal/(Team Cardinal) | 106 White/Black/(Black) |
| 107 White/Team Navy/(Team Navy) | 108 White/Team Royal/(Team Royal) |
| 109 White/Team Scarlet/(Team Scarlet) | 110 White/Team Purple/(Team Purple) |
| 111 White/Team Dark Green/(Team Dark Green) | 115 White/Team Dark Maroon/(Team Dark Maroon) |
| 123 White/Team Anthracite/(Team Anthracite) | 342 Team Dark Green/White/(White) |
| 420 Team Navy/White/(White) | 494 Team Royal/White/(White) |
| 546 Team Purple/White/(White) | 612 Team Cardinal/White/(White) |
| 658 Team Scarlet/White/(White) | 670 Team Dark Maroon/White/(White) |



**BOYS NIKE STOCK BLOCK SHORT
FN2361 \$55.00**

SIZES: XS, S, M, L, XL
FABRIC: 100% polyester.
OFFER DATE: 07/01/23
END DATE: 07/01/28

Keep things simple and fresh with the Nike Block Shorts. Sweat-wicking fabric helps keep your players dry and comfortable. An elastic waistband creates a secure fit.
Hip width: 17.25", Inseam length: 6.5" (size medium).

- | | |
|--|--|
| 012 Black/White/(White) | 061 Team Anthracite/White/(White) |
| 104 White/Team Cardinal/(Team Cardinal) | 106 White/Black/(Black) |
| 107 White/Team Navy/(Team Navy) | 108 White/Team Royal/(Team Royal) |
| 109 White/Team Scarlet/(Team Scarlet) | 110 White/Team Purple/(Team Purple) |
| 111 White/Team Dark Green/(Team Dark Green) | 115 White/Team Dark Maroon/(Team Dark Maroon) |
| 123 White/Team Anthracite/(Team Anthracite) | 342 Team Dark Green/White/(White) |
| 420 Team Navy/White/(White) | 494 Team Royal/White/(White) |
| 546 Team Purple/White/(White) | 612 Team Cardinal/White/(White) |
| 658 Team Scarlet/White/(White) | 670 Team Dark Maroon/White/(White) |



**KIDS NIKE STOCK ELITE GAME JERSEY
HM9044 \$32.00**

SIZES: XS, S, M, L, XL
FABRIC: 100% recycled polyester.
OFFER DATE: 07/01/25
END DATE: 07/01/29

Breathable design and durable seams helps athletes stay comfortable and confident during the heat of the game. • Nike Dri-FIT technology moves sweat away from skin for quicker evaporation, helping athletes stay dry and comfortable. • Not too tight or overly baggy, this jersey is made with the classic Nike fit your athletes know and love. **Body width: 16", Body length: 21" (size medium).**

- | | | |
|---------------------------------------|---------------------------------------|---|
| 010 Black/White/(White) | 100 White/Black/(Black) | 102 White/White/(Anthracite) |
| 341 Gorge Green/White/(White) | 419 College Navy/White/(White) | 493 Game Royal/White/(White) |
| 545 Field Purple/White/(White) | 610 Team Maroon/White/(White) | 657 University Red/White/(White) |
| 669 Deep Maroon/White/(White) | | |



**KIDS NIKE STOCK ELITE GAME SHORT
HM9046 \$32.00**

SIZES: XS, S, M, L, XL
FABRIC: 100% recycled polyester.
OFFER DATE: 07/01/25
END DATE: 07/01/29

Breathable, stretch design and durable seams help athletes stay comfortable and confident during the heat of the game. Elastic waistband with looped drawcord ensures a snug and secure fit. • Nike Dri-FIT technology moves sweat away from skin for quicker evaporation, helping athletes stay dry and comfortable. • Not too tight or overly baggy, these shorts made with the classic Nike fit your athletes know and love. **Hip width: 17.25", Inseam length: 5.5" (size medium).**

- | | | |
|---------------------------------------|---------------------------------------|---|
| 010 Black/White/(White) | 100 White/Black/(Black) | 102 White/White/(Anthracite) |
| 341 Gorge Green/White/(White) | 419 College Navy/White/(White) | 493 Game Royal/White/(White) |
| 545 Field Purple/White/(White) | 610 Team Maroon/White/(White) | 657 University Red/White/(White) |
| 669 Deep Maroon/White/(White) | | |



SIDE VIEW

**KIDS NIKE STOCK ELITE PRACTICE JERSEY
HM9961 \$32.00**

SIZES: XS, S, M, L, XL
FABRIC: 100% recycled polyester.
OFFER DATE: 07/01/25
END DATE: 07/01/29

Breathable, stretch design and durable seams help athletes stay comfortable and confident during the heat of the game. • Nike Dri-FIT technology moves sweat away from skin for quicker evaporation, helping athletes stay dry and comfortable. • Single-layer knit fabric with white on reverse. • Not too tight or overly baggy, this jersey is made with the classic Nike fit your athletes know and love.
Body width: 16.25", Body length: 22" (size medium).

- | | | |
|---------------------------------------|---|---------------------------------------|
| 010 Black/White/(White) | 060 Anthracite/White/(White) | 341 Gorge Green/White/(White) |
| 419 College Navy/White/(White) | 493 Game Royal/White/(White) | 545 Field Purple/White/(White) |
| 610 Team Maroon/White/(White) | 657 University Red/White/(White) | 669 Deep Maroon/White/(White) |



SINGLE LAYER CONSTRUCTION

REVERSIBLE

**KIDS NIKE STOCK ELITE ICON SHORT
HM9962 \$30.00**

SIZES: XS, S, M, L, XL
FABRIC: 100% recycled polyester.
OFFER DATE: 07/01/25
END DATE: 07/01/29

Tested on the world's greatest athletes, these shorts are pulled directly from the practice courts of the NBA. • Breathable, stretch design and durable seams help athletes stay comfortable and confident during the heat of the game. Elastic waistband with looped drawcord ensures a snug and secure fit. • Nike Dri-FIT technology moves sweat away from skin for quicker evaporation, helping athletes stay dry and comfortable. • Not too tight or overly baggy, these shorts made with the classic Nike fit your athletes know and love. **Hip width: 17.5", Inseam length: 6.25" (size medium).**

- | | | |
|--|---------------------------------------|---------------------------------------|
| 010 Black/White/(White) | 060 Anthracite/White/(White) | 100 White/Black/(Black) |
| 104 White/Team Maroon/(Team Maroon) | 341 Gorge Green/White/(White) | 419 College Navy/White/(White) |
| 493 Game Royal/White/(White) | 545 Field Purple/White/(White) | 610 Team Maroon/White/(White) |
| 657 University Red/White/(White) | 669 Deep Maroon/White/(White) | |



SIDE VIEW

BOYS NIKE STOCK DRI-FIT PRACTICE DISH SHORT DN5271 BLANK \$30.00

SIZES: XS, S, M, L, XL
FABRIC: 100% polyester.
OFFER DATE: 07/01/22
END DATE: 07/01/26

Features double knit interlock material. Silicone gripper elastic inner waistband with inner drawcords. Not reversible but will match up with reversible jersey.
Hip width: 17.5", Inseam length: 7" (size medium).
Part of Stock Embellishment Program.

- | | | |
|---------------------------------------|---|--|
| 012 Black/White/(White) | 342 Team Dk Green/White/(White) | 420 Team Navy/White/(White) |
| 494 Team Royal/White/(White) | 546 Team Purple/White/(White) | 612 Team Cardinal/White/(White) |
| 658 Team Scarlet/White/(White) | 670 Team Dk Maroon/White/(White) | |



NEW
KIDS NIKE STOCK ELITE CONNECT SHORT I11586 \$30.00

SIZES: XS, S, M, L, XL
FABRIC: 100% polyester.
OFFER DATE: 07/01/26
END DATE: 07/01/29

Knit fabric offers durable breathability and moves sweat away from the players' skin for quick evaporation, helping them stay dry and comfortable. • Standard fit. • Core-level stock practice shorts.
Hip width: 17.5", Inseam length: 7.25" (size medium).

- | | | |
|---------------------------------------|---------------------------------------|---|
| 010 Black/White/(White) | 060 Anthracite/White/(White) | 100 White/Black/(Black) |
| 341 Gorge Green/White/(White) | 419 College Navy/White/(White) | 493 Game Royal/White/(White) |
| 545 Field Purple/White/(White) | 610 Team Maroon/White/(White) | 657 University Red/White/(White) |
| 669 Deep Maroon/White/(White) | | |

 Sustainable Materials



**KIDS NIKE DIGITAL ELITE MIXTAPE JERSEY 2
FQ3733 BLANK \$65.00**

SIZES: XS, S, M, L, XL
FABRIC: 100% polyester.
OFFER DATE: 07/01/24
END DATE: 04/15/26

Create a uniform inspired by the best players on the court with the Nike Elite Mixtape Jersey 2. Lightweight fabric with sweat-wicking technology in a classic design helps minimize distractions, so your players can keep their heads in the game. Choose from 44 colors and other custom options for an authentic look.
Body width: 16", Body length: 21" (size medium).



CUSTOMIZE IT

For complete embellishment and pricing options please visit [NIKETEAM.COM](https://www.niketeam.com)



Sustainable Materials



**KIDS NIKE DIGITAL ELITE MIXTAPE SHORT 2
FQ3734 BLANK \$65.00**

SIZES: XS, S, M, L, XL
FABRIC: 100% polyester.
OFFER DATE: 07/01/24
END DATE: 04/15/26

Create a uniform inspired by the best players on the court with the Nike Elite Mixtape Shorts 2. Lightweight fabric with sweat-wicking technology in a classic design helps minimize distractions, so your players can keep their heads in the game. Choose from 44 colors and other custom options for an authentic look.
Hip width: 17.25", Inseam length: 5.5" (size medium).



CUSTOMIZE IT

For complete embellishment and pricing options please visit [NIKETEAM.COM](https://www.niketeam.com)



Sustainable Materials



**KIDS NIKE SHOWTIME FULL ZIP HOODIE
FN2368 \$80.00**

SIZES: XS, S, M, L, XL
FABRIC: Body: 58–78% polyester/22–42% cotton. Face of hood center back panel: 100% polyester.
 Back of hood center back panel: 65% cotton/35% polyester.
OFFER DATE: 07/01/23
END DATE: 07/01/27

Layer up for practice or pre-game in the cozy comfort of the Nike Dri-FIT Showtime Hoodie. Incredibly soft fabric with sweat-wicking power helps you stay dry while you warm up. Nike Dri-FIT technology moves sweat away from your skin for quicker evaporation, helping you stay dry and comfortable. Double-knit fabric has a super-soft feel. Front pockets
Body width: 16.75", Body length: 25" (size medium).

- 010** Black/Black/Team Anthracite/(White)
- 343** Team Dark Green/Black/Team Anthracite/(White)
- 496** Team Royal/Black/Team Anthracite/(White)
- 611** Team Cardinal/Black/Team Anthracite/(White)
- 671** Team Dark Maroon/Black/Team Anthracite/(White)
- 032** Black Heather/Black/Team Anthracite/(White)
- 427** Team Navy/Black/Team Anthracite/(White)
- 547** Team Purple/Black/Team Anthracite/(White)
- 661** Team Scarlet/Black/Team Anthracite/(White)



**KIDS NIKE SHOWTIME PANT
FN2369 \$70.00**

SIZES: XS, S, M, L, XL
FABRIC: Body: 58–78% polyester/22–42% cotton. Face of hood center back panel: 100% polyester.
 Back of hood center back panel: 65% cotton/35% polyester.
OFFER DATE: 07/01/23
END DATE: 07/01/27

Layer up for practice or pre-game in the cozy comfort of the Nike Dri-FIT Showtime Pants. Incredibly soft fabric with sweat-wicking power helps you stay dry while you warm up. Nike Dri-FIT technology moves sweat away from your skin for quicker evaporation, helping you stay dry and comfortable. Knit fabric feels soft against your skin. Elastic waistband with drawcord. Side pockets. Zippered pocket at back secures your phone or other belongings.
Hip width: 16.75", Inseam length: 25.75" (size medium).

- 010** Black/Black/Team Anthracite/(White)
- 343** Team Dark Green/Black/Team Anthracite/(White)
- 496** Team Royal/Black/Team Anthracite/(White)
- 611** Team Cardinal/Black/Team Anthracite/(White)
- 671** Team Dark Maroon/Black/Team Anthracite/(White)
- 032** Black Heather/Black/Team Anthracite/(White)
- 427** Team Navy/Black/Team Anthracite/(White)
- 547** Team Purple/Black/Team Anthracite/(White)
- 661** Team Scarlet/Black/Team Anthracite/(White)



NEW
BOYS NIKE DIGITAL VAPOR SELECT2 JERSEY
HQ5999 BLANK/SUBLIMATION \$105.00

SIZES: XS, S, M, L, XL
FABRIC: 100% polyester - recycled knit.
OFFER DATE: 10/01/25
END DATE: 10/01/29

Inspired by the popular Men's Digital Vapor Select 2-Button Jersey, this classic design offers a stylish alternative to the traditional full-button look. With its sleek and modern aesthetic, this jersey is perfect for teams seeking a professional-grade look that's both timeless and versatile. **Body width: 18", Body length: 20.75" (size medium).**



CUSTOMIZE IT
For complete embellishment and pricing options please visit NIKETEAM.COM

NEW
KIDS NIKE DIGITAL THROWBACK JERSEY
HQ5967 BLANK/SUBLIMATION \$90.00

SIZES: XS, S, M, L, XL
FABRIC: 100% polyester - recycled knit.
OFFER DATE: 10/01/25
END DATE: 10/01/29

The reimagined baseball jersey that's sure to strike a chord with fans of the classic game. Inspired by the iconic looks of baseball's past, this jersey features a nostalgic design that's both retro and refreshingly modern. **Body width: 17.5", Body length: 22" (size medium).**



CUSTOMIZE IT
For complete embellishment and pricing options please visit NIKETEAM.COM

**KIDS NIKE STOCK VAPOR SELECT2
FULL BUTTON JERSEY
DX9015 \$55.00**

SIZES: XS, S, M, L, XL
FABRIC: 100% polyester - recycled knit.
OFFER DATE: 10/01/24
END DATE: 10/01/28

The Vapor Select reset converts a tried & true material into a recycled offering to move toward a more sustainable playing field. Pulling inspiration from the PRO league's throwback uniforms, Vapor Select stock boasts a classic raglan sleeve look with panel insets for added color. The new stock uniform, also, comes with a woven authenticator label for a more specialized league connection.
Body width: 18", Body length: 22" (size medium).



- | | | |
|--------------------------------------|---|--|
| 010 Black/Black/(White) | 012 Black/White/(White) | 052 Wolf Grey/Wolf Grey/(Black) |
| 060 Anthracite/White/(White) | 100 White/White/(Black) | 106 White/Black/(Black) |
| 120 Natural/Natural/(Black) | 341 Gorge Green/White/(White) | 419 College Navy/White/(White) |
| 448 Valor Blue/White/(White) | 493 Game Royal/White/(White) | 545 Field Purple/White/(White) |
| 610 Team Maroon/White/(White) | 657 University Red/White/(White) | 669 Deep Maroon/White/(White) |
| 820 Team Orange/White/(White) | | |

**KIDS STOCK VAPOR SELECT2
2 BUTTON JERSEY
DX8940 \$50.00**

SIZES: XS, S, M, L, XL
FABRIC: 100% polyester - recycled knit.
OFFER DATE: 10/01/24
END DATE: 10/01/28

The Vapor Select reset converts a tried & true material into a recycled offering to move toward a more sustainable playing field. Pulling inspiration from the PRO league's throwback uniforms, Vapor Select stock boasts a classic raglan sleeve look with panel insets for added color. The new stock uniform, also, comes with a woven authenticator label for a more specialized league connection.

Body width: 18", Body length: 22" (size medium).

- | | | |
|--------------------------------------|---------------------------------------|---|
| 010 Black/Black/(White) | 011 Black/White/(White) | 052 Wolf Grey/Wolf Grey/(Black) |
| 060 Anthracite/White/(White) | 100 White/White/(Black) | 106 White/Black/(Black) |
| 120 Natural/Natural/(Black) | 341 Gorge Green/White/(White) | 419 College Navy/White/(White) |
| 448 Valor Blue/White/(White) | 493 Game Royal/White/(White) | 545 Field Purple/White/(White) |
| 610 Team Maroon/White/(White) | 613 Team Crimson/White/(White) | 657 University Red/White/(White) |
| 669 Deep Maroon/White/(White) | 802 Team Orange/White/(White) | |



**KIDS NIKE STOCK VAPOR SELECT2
V-NECK JERSEY
DX9010 \$50.00**

SIZES: XS, S, M, L, XL
FABRIC: 100% polyester - recycled knit.
OFFER DATE: 10/01/24
END DATE: 10/01/28

The Vapor Select reset converts a tried & true material into a recycled offering to move toward a more sustainable playing field. This v-neck silhouette, boasts a classic raglan sleeve and a wide color blocked offering. The new stock uniform also comes with a woven authenticator label for a more specialized league connection. **Body width: 18", Body length: 22" (size medium).**



- | | |
|--|--|
| 010 Black/Black/(White) | 052 Wolf Grey/Wolf Grey/(Black) |
| 100 White/White/(Black) | 104 White/Team Maroon/(Black) |
| 106 White/Black/(Black) | 107 White/College Navy/(Black) |
| 108 White/Game Royal/(Black) | 109 White/University Red/(Black) |
| 110 White/Field Purple/(Black) | 111 White/Gorge Green/(Black) |
| 113 White/Team Crimson/(Black) | 119 White/Valor Blue/(Black) |
| 120 Natural/Natural/(Black) | 121 White/Team Orange/(Black) |
| 341 Gorge Green/Gorge Green/(White) | 419 College Navy/College Navy/(White) |
| 448 Valor Blue/Valor Blue/(White) | 493 Game Royal/Game Royal/(White) |
| 545 Field Purple/Field Purple/(White) | 610 Team Maroon/Team Maroon/(White) |
| 613 Team Crimson/Team Crimson/(White) | 657 University Red/University Red/(White) |
| 802 Team Orange/Team Orange/(White) | |

NEW
KIDS NIKE STOCK LIGHTWEIGHT PLAYER PO
HQ5982 \$90.00

SIZES: XS, S, M, L, XL
FABRIC: 55% recycled nylon/38% nylon/7% elastane stretch woven.
OFFER DATE: 10/01/25
END DATE: 10/01/29

This long-sleeve top is designed to help you perform at your best, with a unique blend of materials and features that prioritize comfort and breathability. The woven material provides a secure and structured fit, while the knit material extension on the sleeves adds a touch of softness and flexibility. Plus, the 1/4 zipper makes it easy to get on and off, and adds extra ventilation to keep you cool and dry.
Body width: 17.5", Body length: 22.75" (size medium).



- | | | |
|-----------------------------------|-------------------------------|--------------------------------|
| 010 Black/(White) | 060 Anthracite/(White) | 341 Gorge Green/(White) |
| 419 College Navy/(White) | 493 Game Royal/(White) | 610 Team Maroon/(White) |
| 657 University Red/(White) | | |



NEW
KIDS STOCK WINDSHIRT LS
HQ5985 \$67.00

SIZES: S, M, L, XL
FABRIC: 90% recycled polyester/10% elastane stretch woven; 100% recycled polyester rib.
OFFER DATE: 10/01/25 **END DATE:** 10/01/29

Elevate your team's style and performance with our best-selling baseball top, a timeless design that's a staple in every coach's wardrobe throughout the season. This versatile top features a solid, non-color blocked execution that exudes a classic, professional look. We've refreshed this style by replacing traditional buttons with a sleek 1/4 zipper. This long-sleeve top is sure to become a go-to favorite for coaches and teams alike. **Body width: 18.25", Body length: 20.75" (size medium).**

- | | | |
|---------------------------------|---------------------------------|-----------------------------------|
| 010 Black/(White) | 060 Anthracite/(White) | 100 White/(Black) |
| 341 Gorge Green/(White) | 419 College Navy/(White) | 493 Game Royal/(White) |
| 545 Field Purple/(White) | 610 Team Maroon/(White) | 657 University Red/(White) |
| 669 Deep Maroon/(White) | | |



NEW
KIDS STOCK WINDSHIRT SS
HQ6003 \$57.00

SIZES: S, M, L, XL
FABRIC: 90% recycled polyester/10% elastane stretch woven; 100% recycled polyester rib.
OFFER DATE: 10/01/25 **END DATE:** 10/01/29

Elevate your team's style and performance with our best-selling baseball top, a timeless design that's a staple in every coach's wardrobe throughout the season. This versatile top features a solid, non-color blocked execution that exudes a classic, professional look. We've refreshed this style by replacing traditional buttons with a sleek 1/4 zipper. This short-sleeve top is sure to become a go-to favorite for coaches and teams alike. **Body width: 18.25", Body length: 20.75" (size medium).**

- | | | |
|---------------------------------|---------------------------------|-----------------------------------|
| 010 Black/(White) | 060 Anthracite/(White) | 100 White/(Black) |
| 341 Gorge Green/(White) | 419 College Navy/(White) | 493 Game Royal/(White) |
| 545 Field Purple/(White) | 610 Team Maroon/(White) | 657 University Red/(White) |
| 669 Deep Maroon/(White) | | |



BOYS NIKE STOCK THERMA-FIT PRE-GAME JACKET
FV8181 \$110.00

SIZES: S, M, L, XL, 2XL, 3XL, 4XL
FABRIC: Recycled woven, water repellent, brushed back.
OFFER DATE: 10/01/24
END DATE: 10/01/27

The recycled Thermo-FIT pre-game jacket was designed to help the athlete achieve peak performance prior to and during practices and games. The new silhouette emphasizes the raglan sleeve, a core piece of the baseball identity. Lined with a light brush, this jacket provides ultimate comfort in adverse weather conditions. The water repellent outer layer offers additional protection so the game never stops! The adjustable drawcord at the hem helps athletes achieve the ideal fit. Zippered pockets lend to extra storage and security at all times. This is an elite jacket for the elite athlete.
Body width: 17.5", Body length: 22.25" (size medium).



- | | | |
|-------------------------------|-----------------------------------|---------------------------------|
| 010 Black/(White) | 060 Anthracite/(White) | 419 College Navy/(White) |
| 493 Game Royal/(White) | 657 University Red/(White) | |



NEW
KIDS STOCK LS CREW TOP PRE-GAME
HQ5988 \$62.00

SIZES: S, M, L, XL
FABRIC: 90% recycled polyester/10% elastane French terry knit; 100% recycled polyester rib.
OFFER DATE: 10/01/25
END DATE: 10/01/29

Designed for the moments leading up to the big game, the pre-game top is the perfect choice for navigating weather transitions and cool night games. Its crew aesthetic offers a timeless look that's both stylish and functional, while providing added warmth to keep you comfortable and focused.
Body width: 17.25", Body length: 22.25" (size medium).



- | | |
|---|--|
| 010 Black/Anthracite/(White) | 060 Anthracite/Anthracite/(White) |
| 341 Gorge Green/Anthracite/(White) | 419 College Navy/Anthracite/(White) |
| 493 Game Royal/Anthracite/(White) | 657 University Red/Anthracite/(White) |

**KIDS NIKE STOCK VAPOR SELECT2 PANT
DX9008 \$50.00**

SIZES: XS, S, M, L, XL
FABRIC: 100% polyester - recycled knit.
OFFER DATE: 10/01/24
END DATE: 10/01/28

The Vapor Select reset converts a tried & true material into a recycled offering that moves toward a more sustainable playing field. The new stock pant also comes in a new modern fit with a tapered leg to capture a clean, athletic look. The updated hazard belt loops connects the Pro aesthetic directly to our TEAM athletes. **Hip width: 16.25", Inseam length: 25.5" (size medium).**

- | | | |
|----------------------------|-------------------------------|--------------------------|
| 010 Black/(White) | 052 Wolf Grey/(Black) | 100 White/(Black) |
| 120 Natural/(Black) | 448 Valor Blue/(White) | |



**KIDS NIKE STOCK VAPOR SELECT2 HIGH PANT
DX8941 \$50.00**

SIZES: XS, S, M, L, XL
FABRIC: 100% polyester - recycled knit.
OFFER DATE: 10/01/24
END DATE: 10/01/28

The Vapor Select reset converts a tried & true material into a recycled offering that moves toward a more sustainable playing field. The new stock pant also comes in a new modern fit with a tapered leg to capture a clean, athletic look. The gripper at the bottom hem of the High Pant, helps to eliminate distraction and keep the pant in place. The updated hazard belt loops connects the Pro aesthetic directly to our TEAM athletes. **Hip width: 16.25", Inseam length: 16" (size medium).**

- | | | |
|----------------------------|-------------------------------|--------------------------|
| 010 Black/(White) | 052 Wolf Grey/(Black) | 100 White/(Black) |
| 120 Natural/(Black) | 448 Valor Blue/(White) | |



**KIDS STOCK VAPOR SELECT2 PIPED PANT
DX9009 \$50.00**

SIZES: XS, S, M, L, XL
FABRIC: 100% polyester - recycled knit.
OFFER DATE: 10/01/24
END DATE: 10/01/28

The Vapor Select reset converts a tried & true material into a recycled offering that moves toward a more sustainable playing field. The new stock pant also comes in a new modern fit with a tapered leg to capture a clean, athletic look. The side piping provides more opportunity for color connections. The updated hazard belt loops connects the Pro aesthetic directly to our TEAM athletes.

Hip width: 16.25", Inseam length: 25.5" (size medium).

- | | |
|---|---|
| 053 Wolf Grey/University Red/(Black) | 055 Wolf Grey/Game Royal/(Black) |
| 056 Wolf Grey/College Navy/(Black) | 058 Wolf Grey/Black/(Black) |
| 059 Wolf Grey/Gorge Green/(Black) | 106 White/Black/(Black) |
| 107 White/College Navy/(Black) | 108 White/Game Royal/(Black) |
| 109 White/University Red/(Black) | 111 White/Gorge Green/(Black) |



Sustainable Materials



**KIDS STOCK VAPOR SELECT2
HIGH PIPED PANT
DX9017 \$50.00**

SIZES: XS, S, M, L, XL
FABRIC: 100% polyester - recycled knit.
OFFER DATE: 10/01/24
END DATE: 10/01/28

The Vapor Select reset converts a tried & true material into a recycled offering that moves toward a more sustainable playing field. The new stock pant also comes in a new modern fit with a tapered leg to capture a clean, athletic look. The gripper at the bottom hem of the High Pant, helps to eliminate distraction and keep the pant in place. The side piping provides more opportunity for color connections. The updated hazard belt loops connects the Pro aesthetic directly to our TEAM athletes.

Hip width: 16.25", Inseam length: 16" (size medium).

- | | |
|---|---|
| 053 Wolf Grey/University Red/(Black) | 055 Wolf Grey/Game Royal/(Black) |
| 056 Wolf Grey/College Navy/(Black) | 058 Wolf Grey/Black/(Black) |
| 059 Wolf Grey/Gorge Green/(Black) | 106 White/Black/(Black) |
| 107 White/College Navy/(Black) | 108 White/Game Royal/(Black) |
| 109 White/University Red/(Black) | 111 White/Gorge Green/(Black) |



Sustainable Materials



NEW
GIRLS NIKE STOCK VAPOR SELECT2 JERSEY
HQ6427 \$50.00

SIZES: XS, S, M, L, XL
FABRIC: 100% recycled base.
OFFER DATE: 10/01/25
END DATE: 10/01/29

This is a direct takedown of the Women's Select 2-Button Jersey. This allows you to buy uniforms for your club all the way through adult and youth in the same uniform.

Body width: 18", Body length: 22" (size medium).



- | | | |
|-----------------------------------|--------------------------------|---------------------------------|
| 010 Black/(White) | 052 Wolf Grey/(Black) | 060 Anthracite/(White) |
| 100 White/(Black) | 341 Gorge Green/(White) | 419 College Navy/(White) |
| 448 Valor Blue/(White) | 493 Game Royal/(White) | 545 Field Purple/(White) |
| 657 University Red/(White) | 669 Deep Maroon/(White) | 610 Team Maroon/(White) |
| 802 Team Orange/(White) | | |

**GIRLS NIKE STOCK VAPOR SELECT2 PANT
FB7153 \$50.00**

SIZES: XS, S, M, L, XL
FABRIC: 100% recycled base.
OFFER DATE: 10/01/24
END DATE: 10/01/28

The Vapor Select 2.0 reset converts a tried and true material into a recycled offering to move toward a more sustainable playing field. Updated fit with a higher rise than previous softball pants and 2 cm longer give the athlete more coverage around the knee. Updated belt loops for easier removal plus adding of a belt. **Hip width: 16.25", Inseam length: 16" (size medium).**



Sustainable Materials



- | | | |
|---------------------------------|-------------------------------|-----------------------------------|
| 010 Black/(White) | 052 Wolf Grey/(Black) | 100 White/(Black) |
| 419 College Navy/(White) | 493 Game Royal/(White) | 657 University Red/(White) |

**KIDS NIKE DIGITAL ELITE BOX JERSEY
HFO388 BLANK/SUBLIMATION \$85.00**

SIZES: XS, S, M, L, XL
FABRIC: Body: 100% polyester. Panel: 91% polyester/9% elastane.
OFFER DATE: 10/01/23

The Nike Elite Box Jersey features lightweight, sweat-wicking fabric and extra ventilation on the back to help keep players cool, dry and comfortable all game long. Jersey is fully customizable with color and graphics for your team.

Body width: 21.25", Body length: 22.25" (size medium).

 **CUSTOMIZE IT**
 For complete embellishment and pricing options please visit [NIKETEAM.COM](https://www.niketeam.com)



**BOYS NIKE DIGITAL ELITE REVERSIBLE JERSEY
DO8809 BLANK/SUBLIMATION \$70.00**

SIZES: XS, S, M, L, XL
FABRIC: 100% polyester.
OFFER DATE: 10/01/22
END DATE: 07/15/28

Put your all into practice or scrimmages, staying cool in the lightweight breathability of the Nike Elite Reversible Jersey. Mesh on 1 side and smooth on the other. Sleeveless design maximizes pad coverage while minimizing distractions. Reversible design lets you switch up teams on the fly. Customize it by selecting squad colors and other details, including your own logo.
Body width: 17.5", Body length: 19.5" (size medium).

 **CUSTOMIZE IT**
For complete embellishment and pricing options please visit [NIKETEAM.COM](https://www.niketeam.com)



REVERSIBLE

**GIRLS NIKE DIGITAL ELITE REVERSIBLE JERSEY
DO8815 BLANK/SUBLIMATION \$70.00**

SIZES: XS, S, M, L, XL
FABRIC: 100% polyester.
OFFER DATE: 10/01/22
END DATE: 07/15/28

Put your all into practice or scrimmages, staying cool in the lightweight breathability of the Nike Elite Reversible Jersey. Mesh on 1 side and smooth on the other. Reversible design lets you switch up teams on the fly. Customize it by selecting squad colors and other details, including your own logo.
Body width: 15.75", Body length: 19.5" (size medium).

 **CUSTOMIZE IT**
For complete embellishment and pricing options please visit [NIKETEAM.COM](https://www.niketeam.com)



REVERSIBLE

NEW
**KIDS NIKE DIGITAL ELITE POCKET SHORT
FV5385 BLANK/SUBLIMATION \$62.00**

SIZES: XS, S, M, L, XL
FABRIC: 100% polyester.
OFFER DATE: 10/01/24
END DATE: 07/15/28

Fully sublimated unlined short. Updated graphics to align with Men's Elite Lacrosse uniform family. Drawstring for adjustable fit. **Hip width: 18", Inseam length: 5" (size medium).**

 **CUSTOMIZE IT**
For complete embellishment and pricing options please visit [NIKETEAM.COM](https://www.niketeam.com)



**BOYS NIKE STOCK CLUB SPEED SS JERSEY
DO8807 \$32.00**

SIZES: XS, S, M, L, XL
FABRIC: 100% polyester.
OFFER DATE: 10/01/22
END DATE: 10/01/28

Gear up for practice or competition in the sweat-wicking Nike Club Speed Jersey, made to keep you dry when the field heats up. Not only does its lightweight knit fabric reduce distractions to help you focus on the game, it also has the durability to stand up to the demands of fast-paced play. Choose from 10 colors to outfit your team.

Body width: 17.5", Body length: 22" (size medium).
Part of Stock Embellishment Program.

- | | | |
|------------------------------------|------------------------------------|-------------------------------|
| 106 White/(Black) | 107 White/(Team Navy) | 108 White/(Team Royal) |
| 109 White/(Team Scarlet) | 111 White/(Team Dark Green) | 012 Black/(White) |
| 342 Team Dark Green/(White) | 420 Team Navy/(White) | 494 Team Royal/(White) |
| 658 Team Scarlet/(White) | | |



**BOYS NIKE STOCK CLUB SPEED SHORT
DO8808 \$27.00**

SIZES: XS, S, M, L, XL
FABRIC: 100% polyester.
OFFER DATE: 10/01/22
END DATE: 10/01/28

Round out your uniform for practice or competition with the sweat-wicking Nike Club Speed Shorts, made to keep you dry when the field heats up. Not only does their lightweight knit fabric reduce distractions to help you focus on the game, it also has the durability to stand up to the demands of fast-paced play. Elastic waistband and drawcord. Choose from 10 colors to outfit your team.

Hip width: 18.5", Inseam length: 6.5" (size medium).

- | | | |
|------------------------------------|------------------------------------|-------------------------------|
| 106 White/(Black) | 107 White/(Team Navy) | 108 White/(Team Royal) |
| 109 White/(Team Scarlet) | 111 White/(Team Dark Green) | 012 Black/(White) |
| 342 Team Dark Green/(White) | 420 Team Navy/(White) | 494 Team Royal/(White) |
| 658 Team Scarlet/(White) | | |



**GIRLS NIKE STOCK CLUB SPEED SS JERSEY
D08814 \$32.00**

SIZES: XS, S, M, L, XL
FABRIC: 100% polyester.
OFFER DATE: 10/01/22
END DATE: 10/01/28

Gear up for practice or competition in the sweat-wicking Nike Club Speed Jersey, made to keep you dry when the field heats up. Not only does its lightweight knit fabric reduce distractions to help you focus on the game, it also has the durability to stand up to the demands of fast-paced play. Choose from 9 colors to outfit your team.

Body width: 16.5", Body length: 21" (size medium).
Part of Stock Embellishment Program.

012 Black/(White)	106 White/(Black)	342 Team Dark Green/(White)
420 Team Navy/(White)	494 Team Royal/(White)	546 Team Purple/(White)
612 Team Cardinal/(White)	658 Team Scarlet/(White)	670 Team Dark Maroon/(White)



NEW
**GIRLS NIKE STOCK CLUB SPEED JERSEY RB
H06410 \$32.00**

SIZES: XS, S, M, L, XL
FABRIC: 100% recycled polyester knit.
OFFER DATE: 10/01/25
END DATE: 10/01/28

Body width: 14.75", Body length: 21" (size medium).

010 Black/(White)	100 White/(Black)	341 Gorge Green/(White)
419 College Navy/(White)	448 Valor Blue/(White)	493 Game Royal/(White)
545 Field Purple/(White)	610 Team Maroon/(White)	657 University Red/(White)

 Sustainable Materials



**GIRLS NIKE STOCK CLUB SPEED KILT
D08813 \$32.00**

SIZES: XS, S, M, L, XL
FABRIC: 100% polyester.
OFFER DATE: 10/01/22
END DATE: 10/01/28

Round out your uniform for practice or competition with the Nike Club Speed Kilt, made with lightweight fabric that helps reduce distractions so you can focus on the game. Not only does its durable knit design stand up to the demands of high-paced play, it also wicks sweat to keep you dry when the action heats up. Choose from 9 colors to outfit your team. Elastic waistband with drawcord. Does not have built in shorts.
Hip width: 17.75", Front length: 12", Back length 13" (size medium).



- | | | |
|----------------------------------|---------------------------------|-------------------------------------|
| 012 Black/(White) | 106 White/(Black) | 342 Team Dark Green/(White) |
| 420 Team Navy/(White) | 494 Team Royal/(White) | 546 Team Purple/(White) |
| 612 Team Cardinal/(White) | 658 Team Scarlet/(White) | 670 Team Dark Maroon/(White) |

**GIRLS NIKE STOCK CLUB SPEED SHORT
D08811 \$27.00**

SIZES: XS, S, M, L, XL
FABRIC: 100% polyester.
OFFER DATE: 10/01/22
END DATE: 10/01/28

Round out your uniform for practice or competition with the sweat-wicking Nike Club Speed Shorts, made to keep you dry when the field heats up. Not only does their lightweight knit fabric reduce distractions to help you focus on the game, it also has the durability to stand up to the demands of fast-paced play. Choose from 9 colors to outfit your team.
Hip width: 17.75", Inseam length: 4.5" (size medium).



- | | | |
|----------------------------------|---------------------------------|-------------------------------------|
| 012 Black/(White) | 106 White/(Black) | 342 Team Dark Green/(White) |
| 420 Team Navy/(White) | 494 Team Royal/(White) | 546 Team Purple/(White) |
| 612 Team Cardinal/(White) | 658 Team Scarlet/(White) | 670 Team Dark Maroon/(White) |

BOYS NIKE STOCK CLUB REVERSIBLE PINNIE
FDO706 \$20.00

SIZES: S, M, L, XL
FABRIC: 100% polyester.
OFFER DATE: 10/01/23

This Nike reversible pinnie outfits your players in 2 layers of sweat-wicking mesh for breathable comfort and a reversible design lets you change sides on the fly. Nike Dri-FIT technology helps you stay dry, comfortable and focused. Reversible design lets you switch up your look for quick team changes during practice. Breathable mesh fabric adds airflow to help keep you cool.
Body width: 17.25", Body length: 18" (size medium).

- | | | |
|---------------------------------------|--------------------------------------|---|
| 010 Black/White/(White) | 060 Anthracite/White/(White) | 341 Gorge Green/White/(White) |
| 419 College Navy/White/(White) | 448 Valor Blue/White/(White) | 493 Game Royal/White/(White) |
| 545 Field Purple/White/(White) | 610 Team Maroon/White/(White) | 657 University Red/White/(White) |
| 669 Deep Maroon/White/(White) | 716 Sundown/White/(White) | 820 Team Orange/White/(White) |



REVERSIBLE DOUBLE LAYER CONSTRUCTION



REVERSIBLE

**GIRLS NIKE STOCK VARSITY TEAM
REVERSIBLE PINNIE
CW6690 \$20.00**

SIZES: XS, S, M, L, XL
FABRIC: 100% polyester.
OFFER DATE: 10/01/20

The Nike Pinnie features lightweight, sweat-wicking fabric and mesh to help you stay cool, dry and comfortable. The racerback straps on the back let you move freely during gameplay, while allowing quick and easy reversal without removing goggles. Standard fit for a relaxed, easy feel.

Body width: 15.75", Body length: 18" (size medium).
Part of Stock Embellishment Program.

- | | | |
|--------------------------------------|--------------------------------------|-------------------------------------|
| 010 Black/White/(White) | 060 Anthracite/White/(White) | 341 Dark Green/White/(White) |
| 419 Navy/White/(White) | 453 Light Blue/White/(White) | 494 Royal/White/(White) |
| 546 Purple/White/(White) | 610 Cardinal/White/(White) | 658 Scarlet/White/(White) |
| 670 Dark Maroon/White/(White) | 717 Bright Gold/White/(White) | 821 Orange/White/(White) |



REVERSIBLE DOUBLE LAYER CONSTRUCTION



BACK VIEW



REVERSED BACK VIEW

**KIDS NIKE DF ADV VAPOR V JERSEY SS US
FZ9281 \$77.00**

SIZES: XS, S, M, L, XL **FABRIC:** 100% polyester.
OFFER DATE: 01/01/25 **END DATE:** 12/31/26

Designed for the biggest stages in soccer, now offered to your players. The VaporKnit V jersey is made with mesh side panels, premium knit fabric and the advanced sweat-wicking power of Nike Dri-FIT ADV. This product is made with at least 75% recycled polyester fibers. Side panel construction uses a more efficient pattern to help reduce material waste.



Sustainable Materials



(Body / Neck Rib - Sleeve Cuff / Underarm - Side Panel / (Swoosh)

- 010** Black with Anthracite Combo / Black / Black / (White)
- 100** White with Pure Platinum Combo / White / White / (Black)
- 410** Midnight Navy with Loyal Blue Combo / Midnight Navy / Midnight Navy / (White)
- 463** Royal Blue with Sport Blue Combo / Royal Blue / Royal Blue / (White)
- 657** University Red with Speed Red Combo / University Red / University Red / (White)

**KIDS NIKE DF STRIKE IV JERSEY SS US
FZ9331 \$50.00**

SIZES: XS, S, M, L, XL **FABRIC:** 100% polyester.
OFFER DATE: 01/01/25 **END DATE:** 12/31/26

Inspired by what the best players wear on the biggest stages in soccer. Dri-FIT technology works with breathable mesh side panels to help keep athletes cool and composed during fast-paced play. A slim, streamlined fit ensures that nothing comes between your players and the ball. This product is made with 100% recycled polyester fibers. Side panel construction uses a more efficient pattern to help reduce material waste.



Sustainable Materials



(Body / Underarm / Side Panel / Rib / (Swoosh)

- 010** Black with Anthracite Blend / Black / Black / Black / (White)
- 012** Wolf Grey with Pure Platinum Blend / Black / Bright Crimson / Bright Crimson / (White)
- 100** White with Pure Platinum Blend / White / White / White / (Black)
- 354** Hyper Turq with Tropical Twist Blend / Black / Hyper Turq / Hyper Turq / (Black)
- 410** Midnight Navy with Loyal Blue Blend / White / Midnight Navy / Midnight Navy / (White)
- 463** Royal Blue with Sport Blue Blend / White / Royal Blue / Royal Blue / (White)
- 657** University Red with Speed Red Blend / Black / University Red / University Red / (White)

NEW
NIKE T90 SS JERSEY
IQ8099 \$60.00

SIZES: XS, S, M, L, XL **FABRIC:** 100% polyester.
OFFER DATE: 04/01/26 **END DATE:** 12/31/27

Designed to perform through all 90 minutes of a match, the Total 90 collection became one of the iconic kits of the 2000s thanks to its curving lines, asymmetric designs and mixed materials. • Nike Dri-FIT technology moves sweat away from skin for quicker evaporation, helping athletes stay dry and comfortable. • Lightweight knit fabric has a soft, smooth feel. • Not too tight or overly baggy, this top is made with the classic Nike fit your athletes know and love.

- | | | |
|-----------------------------------|--------------------------------|--------------------------------|
| 010 Black/(White) | 100 White/(Wolf Grey) | 341 Gorge Green/(White) |
| 419 College Navy/(White) | 448 Valor Blue/(White) | 480 Game Royal/(White) |
| 657 University Red/(White) | 729 Jersey Gold/(Black) | 891 Team Orange/(White) |

 Sustainable Materials



NEW
NIKE REVOLUTION SS JERSEY
HV8138 \$50.00

SIZES: XS, S, M, L, XL **FABRIC:** 100% polyester.
OFFER DATE: 04/01/26 **END DATE:** 12/31/27

Nike Dri-FIT technology moves sweat away from skin for quicker evaporation, helping athletes stay dry and comfortable. • Mesh panels provide breathability where athletes need it most. • Graphic is randomly placed to help optimize material usage and reduce waste. • This garment is made with at least 75% recycled materials. • Not too tight or overly baggy, this jersey is made with the classic Nike fit your athletes know and love.

- | | |
|--|--|
| 010 Black/White/(White) | 012 Wolf Grey/Anthracite/(Black) |
| 100 White/Black/(Black) | 354 Hyper Turq/Teal Nebula/(Black) |
| 419 College Navy/Game Royal/(White) | 480 Game Royal/College Navy/(White) |
| 657 University Red/Team Red/(White) | |

 Sustainable Materials



NEW
KIDS NIKE DRI-FIT CHALLENGE VI JERSEY SS
HV8148 \$47.00

SIZES: XS, S, M, L, XL **FABRIC:** 100% polyester.
OFFER DATE: 01/01/26 **END DATE:** 12/31/27

Nike Dri-FIT technology moves sweat away from skin for quicker evaporation, helping athletes stay dry and comfortable. • Mesh back provides breathability where athletes need it most. • New v-neck design with updated ribbing on collar and sleeves. • All-over print is randomly placed to reduce waste, resulting in variations from jersey to jersey. • Not too tight or overly baggy, this jersey is made with the classic Nike fit your athletes know and love.

- | | | |
|--------------------------------|-----------------------------------|--------------------------------|
| 010 Black/(White) | 012 Wolf Grey/(Black) | 100 White/(Black) |
| 341 Gorge Green/(White) | 419 College Navy/(White) | 448 Valor Blue/(White) |
| 480 Game Royal/(White) | 657 University Red/(White) | 692 Team Maroon/(White) |
| 702 Volt/(Black) | 891 Team Orange/(Black) | |

 Sustainable Materials



KIDS NIKE DF PRECISION VII JERSEY SS US
FZ9336 \$45.00

SIZES: XS, S, M, L, XL **FABRIC:** 100% polyester.
OFFER DATE: 01/01/25 **END DATE:** 12/31/26

Let your players stand-out in the Nike Precision VII Jersey. Dri-FIT technology pairs with breathable mesh in a slim, streamlined fit to help keep players dry and cool. All-over print is inspired by clashing images of a classic sculpture of the Nike Goddess. This product is made with 100% recycled polyester fibers.

- | | |
|--|--|
| 010 Black/Anthracite/(White) | 100 White/Pure Platinum/(Black) |
| 302 Pine Green/(White) | 410 Midnight Navy/Dark Obsidian/(White) |
| 412 University Blue/Coast/(White) | 448 Valor Blue/Coast/(White) |
| 463 Sport Royal/Royal Blue/(White) | 657 University Red/(White) |
| 677 Team Red/Night Maroon/(White) | 692 Team Maroon/Night Maroon/(White) |
| 702 Volt/Black/(White) | 719 Tour Yellow/University Gold/(Black) |
| 819 Safety Orange/Team Orange/(Black) | |

 Sustainable Materials



NEW
KIDS NIKE DRI-FIT TROPHY VI JERSEY SS
HV8158 \$40.00

SIZES: XS, S, M, L, XL
FABRIC: 100% polyester.
OFFER DATE: 01/01/26
END DATE: 12/31/28

Nike Dri-FIT technology moves sweat away from skin for quicker evaporation, helping athletes stay dry and comfortable. • Mesh back provides breathability where athletes need it most. • Updated raglan sleeve and v-neck design provides the ability to color block. • Not too tight or overly baggy, this jersey is made with the classic Nike fit your athletes know and love.

- | | |
|---|--|
| 010 Black/White/(White) | 101 White/Wolf Grey/(Black) |
| 341 Gorge Green/Pine Green/(White) | 354 Hyper Turq/Chlorine Blue/(Black) |
| 419 College Navy/Photo Blue/(White) | 448 Valor Blue/College Navy/(White) |
| 480 Game Royal/College Navy/(White) | 547 Court Purple/Black/(White) |
| 658 University Red/Team Maroon/(White) | 739 University Gold/Tour Yellow/(Black) |
| 891 Team Orange/Safety Orange/(Black) | |

 Sustainable Materials



KIDS NIKE STRIPED DIVISION V JERSEY SS US
FZ9341 \$37.00

SIZES: XS, S, M, L, XL **FABRIC:** 100% polyester.
OFFER DATE: 01/01/25 **END DATE:** 12/31/27

An updated knit construction works with Dri-FIT technology for optimal breathability and comfort. The additional mesh back panel increases airflow, helping your players keep cool as the game heats up. This product is made with 100% recycled polyester fibers.

- | | | |
|---|--|--|
| 010 Black/Anthracite/(White) | 100 White/Black/(White) | 102 White/University Blue/(Black) |
| 105 White/Midnight Navy/(White) | 302 Pine Green/Black/(White) | 463 Royal Blue/Black/(White) |
| 657 University Red/Black/(White) | 739 University Gold/Black/(White) | |

 Sustainable Materials



NEW
KIDS NIKE DRI-FIT ACADEMY II JERSEY SS
HV8168 \$37.00

SIZES: XS, S, M, L, XL **FABRIC:** 100% polyester.
OFFER DATE: 01/01/26 **END DATE:** 12/31/29

Nike Dri-FIT technology moves sweat away from skin for quicker evaporation, helping athletes stay dry and comfortable. • Mesh back provides breathability where athletes need it most. • Sleeve print is randomly placed to reduce waste, resulting in variations from jersey to jersey. • Not too tight or overly baggy, this jersey is made with the classic Nike fit your athletes know and love.

- | | |
|--|--|
| 010 Black/Anthracite/(White) | 012 Wolf Grey/Neutral Grey/(Black) |
| 105 White/White/(Black) | 341 Gorge Green/Pine Green/(White) |
| 419 College Navy/Mystic Navy/(White) | 480 Game Royal/Royal Blue/(White) |
| 547 Court Purple/Varsity Purple/(White) | 657 University Red/University Red/(White) |
| 692 Team Maroon/University Red/(White) | 702 Volt/Barely Volt/(Black) |
| 739 University Gold/Yellow Strike/(Black) | |

 Sustainable Materials



KIDS NIKE DF PARK DERBY IV JERSEY SS US
FD7439 \$32.00

SIZES: XS, S, M, L, XL
FABRIC: 100% polyester.
OFFER DATE: 01/01/24
END DATE: 12/31/26

Help your teams look and play their best in the Nike Dri-FIT Park Derby IV Jersey. Mesh on the back and underarm panels offer breathability where athletes need it most. Body and sleeves are a Nike Dri-FIT knit fabric that moves sweat away to help keep players dry. This top is made with 100% recycled material. Side panel construction uses a more efficient pattern to help reduce material waste. Slim fit for a tailored feel.

- | | | |
|---|--|-------------------------------------|
| 010 Black/White/(White) | 012 Wolf Grey/Volt/(Black) | 100 White/Wolf Grey/(Black) |
| 419 College Navy/White/(White) | 448 Valor Blue/White/(White) | 480 Game Royal/White/(White) |
| 657 University Red/White/(White) | 739 University Gold/White/(White) | |

 Sustainable Materials



**KIDS NIKE DRI-FIT TIEMPO PREMIER II JERSEY
LS US
DH8407 \$32.00**

SIZES: XS, S, M, L, XL
FABRIC: 100% polyester.
OFFER DATE: 01/01/22
END DATE: 12/31/26

The Nike Dri-FIT Tiempo Premier II Jersey brings you the cool performance of sweat-wicking fabric and a mesh back panel kick in when the game heats up.

- | | | |
|-------------------------------------|---|---------------------------------------|
| 010 Black/White/(White) | 100 White/White/(Black) | 419 College Navy/White/(White) |
| 480 Game Royal/White/(White) | 657 University Red/White/(White) | |



**KIDS NIKE DRI-FIT TIEMPO PREMIER II JERSEY
SS US
DH8390 \$27.00**

SIZES: XS, S, M, L, XL
FABRIC: 100% polyester.
OFFER DATE: 01/01/22
END DATE: 12/31/26

The Nike Dri-FIT Tiempo Premier II Jersey brings you the cool performance of sweat-wicking fabric and a mesh back panel kick in when the game heats up.

- | | | |
|---|---------------------------------------|-------------------------------------|
| 010 Black/White/(White) | 012 Wolf Grey/Black/(Black) | 100 White/White/(Black) |
| 341 Gorge Green/White/(White) | 419 College Navy/White/(White) | 448 Valor Blue/White/(White) |
| 480 Game Royal/White/(White) | 547 Court Purple/White/(White) | 616 Vivid Pink/Black/(Black) |
| 657 University Red/White/(White) | 692 Team Maroon/White/(White) | 702 Volt/Black/(Black) |
| 891 Team Orange/Black/(Black) | | |



NEW
KIDS NIKE DRI-FIT PARK VIII JERSEY SS US
HV8188 \$22.00

SIZES: XS, S, M, L, XL
FABRIC: 100% polyester.
OFFER DATE: 01/01/26
END DATE: 12/31/31

Nike Dri-FIT technology moves sweat away from skin for quicker evaporation, helping athletes stay dry and comfortable. • Mesh back provides breathability where athletes need it most. • New raglan sleeve construction updated from the prior Park jersey. • Not too tight or overly baggy, this jersey is made with the classic Nike fit your athletes know and love.



- | | | |
|--------------------------------|------------------------------------|-----------------------------------|
| 010 Black/(White) | 012 Wolf Grey/(Black) | 100 White/(Black) |
| 341 Gorge Green/(White) | 354 Hyper Turq/(Black) | 419 College Navy/(White) |
| 448 Valor Blue/(White) | 480 Game Royal/(White) | 547 Court Purple/(White) |
| 616 Vivid Pink/(Black) | 635 Bright Crimson/(Black) | 657 University Red/(White) |
| 692 Team Maroon/(White) | 702 Volt/(Black) | 719 Tour Yellow/(Black) |
| 729 Jersey Gold/(Black) | 739 University Gold/(Black) | 891 Team Orange/(Black) |



**NIKE DRI-FIT US DIGITAL 24 JERSEY 60D
DR2732 BLANK \$70.00**

SIZES: XS, S, M, L, XL
FABRIC: 100% polyester.
OFFER DATE: 01/01/23
END DATE: 10/15/27

Dress your squad like their heroes in the Nike Dri-FIT US Digital 24 Jersey. Mesh on the back and side panels offer breathability where athletes need it most. Body and sleeves are a Nike Dri-FIT knit fabric that moves sweat away to help keep players dry. Highly customizable with school and team details. Side and back panel construction use a more efficient pattern to help reduce material waste.
Body width: 15.75", Body length: 21.75" (size medium).



Sustainable Materials



NEW WAVY PRINT OPTION
AVAILABLE ON 8/1/2025



NEW HOOPS OPTION



CLASSIC HOOPS OPTION



HARLEQUIN OPTION



SOLID OPTION



NEW STRIPES OPTION



CLASSIC STRIPES OPTION



NEW ERA GX3 OPTION



CUSTOMIZE IT

For complete embellishment and pricing options please visit [NIKETEAM.COM](https://www.niketeam.com)

**NIKE DRI-FIT US DIGITAL 24 SHORT 60D
FD8774 BLANK \$60.00**

SIZES: XS, S, M, L, XL
FABRIC: 100% polyester.
OFFER DATE: 01/01/23
END DATE: 10/15/27

The Nike Dri-FIT US Digital 24 Shorts features sweat-wicking fabric to help keep your players dry and comfortable whether you're training or competing.
Hip width: 16.75", Inseam length: 7" (size medium).



Sustainable Materials



CUSTOMIZE IT

For complete embellishment and pricing options please visit [NIKETEAM.COM](https://www.niketeam.com)

NEW
NIKE T90 SHORT
IQ8100 \$40.00

SIZES: XS, S, M, L, XL **FABRIC:** 100% polyester.
OFFER DATE: 04/01/26 **END DATE:** 12/31/27

Designed to perform through all 90 minutes of a match, the Total 90 collection became one of the iconic kits of the 2000s thanks to its curving lines, asymmetric designs and mixed materials. • Nike Dri-FIT technology moves sweat away from skin for quicker evaporation, helping athletes stay dry and comfortable. • Lightweight knit fabric has a soft, smooth feel. • Elastic waistband with drawcord ensures a snug and secure fit. • Not too tight or overly baggy, these shorts are made with the classic Nike fit your athletes know and love. **Inseam length: 6.3" (size medium).**

010 Black/(White)	100 White/(Wolf Grey)	341 Gorge Green/(White)
419 College Navy/(White)	448 Valor Blue/(White)	480 Game Royal/(White)
657 University Red/(White)	729 Jersey Gold/(Black)	891 Team Orange/(White)

 Sustainable Materials



KIDS NIKE DRI-FIT VENOM WOVEN SHORT IV US
FD7473 \$42.00

SIZES: XS, S, M, L, XL
FABRIC: Body: 87% polyester/13% spandex. Mesh: 100% polyester.
OFFER DATE: 01/01/24 **END DATE:** 12/31/26

The Nike Dri-FIT Venom IV Shorts are designed for soccer's rising stars. Made with Nike Dri-FIT woven fabric, they wick sweat away from the body with four-way stretch properties for increased range of motion. Mesh inner gusset helps to increase breathability. These shorts are made with at least 75% recycled materials. Side panel construction uses a more efficient pattern to help reduce material waste. Standard fit for classic feel and comfort. **Inseam length: 7" (size medium).**

010 Black/White/(White)	012 Wolf Grey/Black/(Black)	100 White/Black/(Black)
302 Pine Green/White/(White)	419 College Navy/White/(White)	448 Valor Blue/White/(White)
480 Game Royal/White/(White)	547 Court Purple/White/(White)	657 University Red/White/(White)
692 Team Maroon/White/(White)	739 University Gold/Black/(Black)	

 Sustainable Materials



BACK VIEW

NEW
KIDS NIKE DRI-FIT LASER VI SHORT W US
HV8255 \$32.00

SIZES: XS, S, M, L, XL **FABRIC:** 100% polyester.
OFFER DATE: 01/01/26 **END DATE:** 12/31/28

Nike Dri-FIT technology moves sweat away from skin for quicker evaporation, helping athletes stay dry and comfortable. •Elastic waistband with drawcord ensures a snug and secure fit. •Side vents at hem helps improve mobility. •The new design gives a more classic sport look with an option of contrast color blocking at the hem. •Not too tight or overly baggy, these shorts are made with the classic Nike fit your athletes know and love. **Inseam length: 7" (size medium).**

- | | | |
|--------------------------------|------------------------------------|-----------------------------------|
| 010 Black/(White) | 012 Wolf Grey/(Black) | 100 White/(Black) |
| 341 Gorge Green/(White) | 354 Hyper Turq/(Black) | 419 College Navy/(White) |
| 480 Game Royal/(White) | 616 Vivid Pink/(Black) | 657 University Red/(White) |
| 692 Team Maroon/(White) | 739 University Gold/(Black) | 891 Team Orange/(Black) |

 Sustainable Materials



KIDS NIKE DRI-FIT LEAGUE KNIT III SHORT US
DRO969 \$29.00

SIZES: XS, S, M, L, XL
FABRIC: 100% polyester.
OFFER DATE: 01/01/23
END DATE: 12/31/26

Round out your game-day uniform with the Nike League Shorts, made from lightweight sweat-wicking fabric that helps you stay dry on the field. With mesh insets and a relaxed, easy fit, they keep the air flowing and distractions low so you can focus on the ball. Embroidered Swoosh design trademark. Elastic waistband with drawcord. Choose from 11 different colors to outfit your team. **Inseam length: 7" (size medium).**

- | | | |
|--|--------------------------------------|---|
| 010 Black/White/(White) | 012 Wolf Grey/Black/(Black) | 100 White/Black/(Black) |
| 341 Gorge Green/White/(White) | 354 Hyper Turq/White/(White) | 419 College Navy/White/(White) |
| 448 Valor Blue/White/(White) | 480 Game Royal/White/(White) | 657 University Red/White/(White) |
| 739 University Gold/Black/(Black) | 891 Team Orange/Black/(Black) | |

 Sustainable Materials



**KIDS NIKE DF CLASSIC III KNIT SHORT US
FZ9374 \$24.00**

SIZES: XS, S, M, L, XL
FABRIC: 100% polyester.
OFFER DATE: 01/01/25
END DATE: 12/31/28

The Classic III shorts are made with Dri-FIT knit fabric and a mesh leg opening to keep players dry and moving comfortably. Elastic waistband with drawcord helps ensure a snug and secure fit through 90 minutes. This product is made with 100% recycled polyester fibers. Dye process reduces the water and energy usage by over 50%. **Inseam length: 7" (size medium).**

- | | | |
|--|--------------------------------------|--|
| 010 Black/White/(White) | 012 Wolf Grey/Black/(Black) | 100 White/Black/(Black) |
| 302 Pine Green/White/(White) | 341 Gorge Green/White/(White) | 410 Midnight Navy/White/(White) |
| 412 University Blue/White/(White) | 463 Royal Blue/White/(White) | 547 Court Purple/White/(White) |
| 657 University Red/White/(White) | 677 Team Red/White/(White) | 702 Volt/Black/(Black) |
| 739 University Gold/Black/(Black) | | |



**KIDS NIKE DRY PARK III SHORT NB
BV6866 \$20.00**

SIZES: XS, S, M, L, XL **FABRIC:** 100% polyester.
OFFER DATE: 04/01/20 **END DATE:** 12/31/31

Dri-FIT angled side seam short (slim fit) with soft hand feel updated fit for better mobility/comfort. **Hip width: 17.5", Inseam length: 7" (size medium).**

- | | | |
|--------------------------------|------------------------------------|-----------------------------------|
| 010 Black/(White) | 012 Wolf Grey/(Black) | 100 White/(Black) |
| 341 Gorge Green/(White) | 354 Hyper Turq/(Black) | 419 College Navy/(White) |
| 448 Valor Blue/(White) | 480 Game Royal/(White) | 547 Court Purple/(White) |
| 617 Vivid Pink/(Black) | 635 Bright Crimson/(Black) | 657 University Red/(White) |
| 692 Team Maroon/(White) | 702 Volt/(Black) | 719 Tour Yellow/(Black) |
| 729 Jersey Gold/(Black) | 739 University Gold/(Black) | 891 Team Orange/(Black) |



NIKE STRIKE KH - WC22 TEAM
FQ8253 \$20.00

Sold in prepacks of 6.

SIZES: XS, S, M, L, XL
 FABRIC: 100% textile.
 OFFER DATE: 04/01/24

- | | |
|---|---|
| 010 Black/Anthracite/(White) | 100 White/(Black) |
| 302 Pine Green/Gorge Green/Black/(White) | 329 Green Spark/(Black) |
| 354 Hyper Turq/(Black) | 410 Midnight Navy/(White) |
| 412 University Blue/Italy Blue/(Midnight Navy) | 463 Royal Blue/Midnight Navy/(White) |
| 477 Team Royal/(White) | 510 Hyper Grape/Black/(Jersey Gold) |
| 635 Bright Crimson/(Black) | 639 Hyper Pink/(Black) |
| 657 University Red/Gym Red/(White) | 702 Volt/(Black) |
| 719 Tour Yellow/University Gold/(Black) | 891 Team Orange/(Black) |



NIKE ACADEMY OTC - TEAM 132
SX5728 \$12.00

Sold in prepacks of 6.

SIZES: XS, S, M, L, XL FABRIC: 100% textile.

The Nike Classic 2 Sock is designed with a dynamic arch and lightweight cushioning for a supportive fit and feel during play. • Dri-FIT technology helps keep feet dry and comfortable. • Cushioning in high-wear areas helps absorb impact. • Dynamic arch provides a supportive fit and feel. • Anatomical left and right socks are designed for a natural fit.

- | | | |
|------------------------------------|--------------------------------|-----------------------------------|
| 010 Black/(White) | 018 Wolf Grey/(Black) | 100 White/(Black) |
| 302 Pine Green/(White) | 303 Hyper Turq/(Black) | 323 Gorge Green/(White) |
| 410 College Navy/(White) | 448 Valor Blue/(White) | 460 Game Royal/(White) |
| 545 Court Purple/(White) | 616 Vivid Pink/(Black) | 648 University Red/(White) |
| 677 Team Maroon/(White) | 702 Volt/(Black) | 719 Tour Yellow/(Black) |
| 739 University Gold/(Black) | 729 Jersey Gold/(Black) | 817 Team Orange/(White) |
| 891 Team Orange/(Black) | | |



NEW
KIDS NIKE DRI-FIT PARK V GK JERSEY LS
HV8318 \$42.00

SIZES: XS, S, M, L, XL **FABRIC:** 100% polyester.
OFFER DATE: 01/01/26 **END DATE:** 12/31/31

Nike Dri-FIT technology moves sweat away from skin for quicker evaporation, helping athletes stay dry and comfortable. • Updated raglan sleeve construction from the prior version. • Sleeve print is randomly placed to reduce waste, resulting in variations from jersey to jersey. • Not too tight or overly baggy, this jersey is made with the classic Nike fit your athletes know and love.

- 010** Black/(White)
- 097** Grey Fog/(Black)
- 507** Wild Grape/(White)
- 645** Hyper Pink/(White)

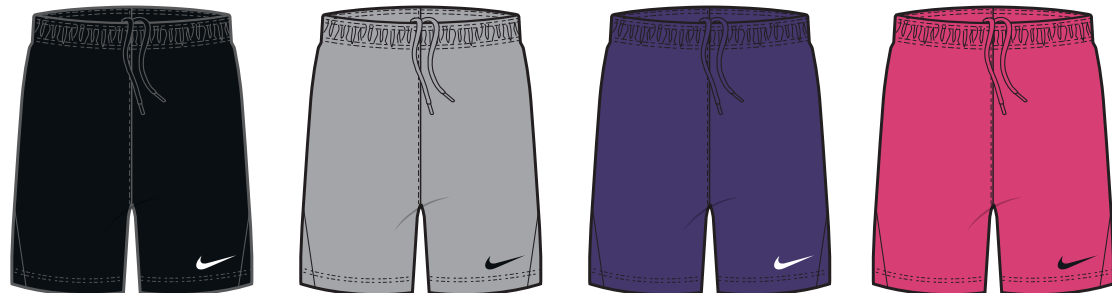


KIDS NIKE DRY PARK III SHORT NB
BV6866 \$20.00

SIZES: XS, S, M, L, XL **FABRIC:** 100% polyester.
OFFER DATE: 04/01/20 **END DATE:** 12/31/31

Dri-FIT angled side seam short (slim fit) with soft hand feel updated fit for better mobility/comfort.
Hip width: 17.5", Inseam length: 7" (size medium).

- 010** Black/(White)
- 012** Wolf Grey/(Black)
- 547** Court Purple/(White)
- 617** Vivid Pink/(Black)



NIKE ACADEMY OTC - TEAM 132
SX5728 \$12.00

Sold in prepacks of 6.

SIZES: XS, S, M, L, XL **FABRIC:** 100% textile.

The Nike Classic 2 Sock is designed with a dynamic arch and lightweight cushioning for a supportive fit and feel during play. • Dri-FIT technology helps keep feet dry and comfortable. • Cushioning in high-wear areas helps absorb impact. • Dynamic arch provides a supportive fit and feel. • Anatomical left and right socks are designed for a natural fit.

- 010** Black/(White)
- 018** Wolf Grey/(Black)
- 545** Court Purple/(White)
- 616** Vivid Pink/(Black)



NEW
KIDS NIKE DRI-FIT GARDIEN VI GOALKEEPER
JERSEY LS US
HV8313 \$82.00

SIZES: XS, S, M, L, XL **FABRIC:** Body: 100% polyester. Panels: 91% polyester/9% spandex.
OFFER DATE: 01/01/26 **END DATE:** 12/31/27

Nike Dri-FIT technology moves sweat away from skin for quicker evaporation, helping athletes stay dry and comfortable. • Endure knit fabric on the sleeves helps add durability. • Spandex-blend panels help increase range of motion for stretch saves. • Not too tight or overly baggy, this jersey is made with the classic Nike fit your athletes know and love.

- | | | |
|-------------------------------|----------------------------------|-------------------------------|
| 010 Black/(White) | 329 Stadium Green/(White) | 507 Wild Grape/(White) |
| 644 Hyper Pink/(White) | 719 Lightening/(Black) | |

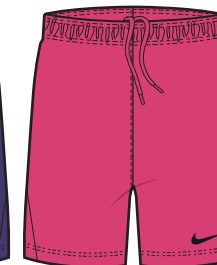


KIDS NIKE DRY PARK III SHORT
BV6866 \$20.00

SIZES: XS, S, M, L, XL
FABRIC: 100% polyester.
OFFER DATE: 04/01/20
END DATE: 12/31/31

Dri-FIT angled side seam short (slim fit) with soft hand feel updated fit for better mobility/comfort.
Hip width: 16.9", Inseam length: 7" (size medium).

- | | | |
|-------------------------------|--------------------------------|---------------------------------|
| 010 Black/(White) | 341 Gorge Green/(White) | 547 Court Purple/(White) |
| 617 Vivid Pink/(Black) | 719 Tour Yellow/(Black) | |



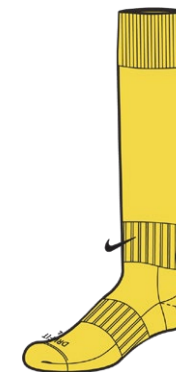
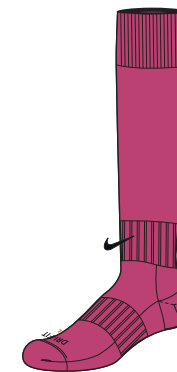
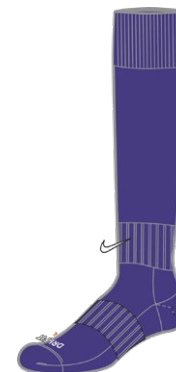
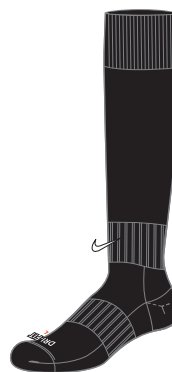
NIKE ACADEMY OTC - TEAM 132
SX5728 \$12.00

Sold in prepacks of 6.

SIZES: XS, S, M, L, XL **FABRIC:** 100% textile.

The Nike Classic 2 Sock is designed with a dynamic arch and lightweight cushioning for a supportive fit and feel during play. • Dri-FIT technology helps keep feet dry and comfortable. • Cushioning in high-wear areas helps absorb impact. • Dynamic arch provides a supportive fit and feel. • Anatomical left and right socks are designed for a natural fit.

- | | | |
|-------------------------------|--------------------------------|---------------------------------|
| 010 Black/(White) | 323 Gorge Green/(White) | 545 Court Purple/(White) |
| 616 Vivid Pink/(Black) | 719 Tour Yellow/(Black) | |



**KIDS NIKE DRI-FIT PAD GARDIEN I GOALKEEPER
COMPRESSION TIGHT
CVO050 \$72.00**

SIZES: XS, S, M, L, XL
FABRIC: 100% polyester.
OFFER DATE: 01/01/22
END DATE: 12/31/27

010 Black/Black/(White)



Sustainable Materials



**KIDS NIKE DRI-FIT PAD GARDIEN I GOALKEEPER
COMPRESSION SHORT
CVO057 \$67.00**

SIZES: XS, S, M, L, XL
FABRIC: 100% polyester.
OFFER DATE: 01/01/22
END DATE: 12/31/27

Inseam length: 5" (size medium).

010 Black/Black/(White)



Sustainable Materials



NEW
UNISEX NIKE DRI-FIT TRAINING BIB 26
HV8429 \$11.00

SIZES: XS, S, M, L, XL **FABRIC:** 100% polyester.
OFFER DATE: 01/01/26 **END DATE:** 12/31/31

- | | | |
|-------------------------------|---------------------------------|-------------------------------|
| 100 White/(Black) | 315 Action Green/(Black) | 406 Photo Blue/(Black) |
| 616 Vivid Pink/(Black) | 702 Volt/(Black) | |



NEW
KIDS NIKE DRI-FIT STRIKE 26 TRACK JACKET K HV8411 \$85.00

SIZES: XS, S, M, L, XL **FABRIC:** 100% polyester. **OFFER DATE:** 01/01/26 **END DATE:** 12/31/27
 Nike Dri-FIT technology moves sweat away from skin for quicker evaporation, helping athletes stay dry and comfortable. • Two zippered side pockets offer plenty of secure storage options. • Lightweight knit fabric has a soft, smooth feel. • Rib at the cuffs and collar help keep this jacket in place. • Not too tight or overly baggy, this jacket is made with the classic Nike fit your athletes know and love.

- 010** Black/Wolf Grey/(White) **329** Green Spark/Wolf Grey/(White) **410** Mid Navy/Royal Blue/(White)
- 463** Royal Blue/Mid Navy/(White) **657** University Red/Black/(White)



CLOSE UP VIEW OF PIPING COLORS (BACK VIEW)

 Sustainable Materials



NEW
KIDS NIKE DRI-FIT STRIKE 26 DRILL TOP K HV8383 \$75.00

SIZES: XS, S, M, L, XL **FABRIC:** 91% polyester/9% spandex. **OFFER DATE:** 01/01/26 **END DATE:** 12/31/27
 Nike Dri-FIT technology moves sweat away from skin for quicker evaporation, helping athletes stay dry and comfortable. • Mesh panels provide breathability where athletes need it most. • Lightweight knit fabric has a soft, smooth feel. • Not too tight or overly baggy, this top is made with the classic Nike fit your athletes know and love.

- 010** Black/Wolf Grey/(White) **329** Green Spark/Wolf Grey/(White) **410** Mid Navy/Royal Blue/(White)
- 463** Royal Blue/Mid Navy/(White) **657** University Red/Black/(White)



CLOSE UP VIEW OF PIPING COLORS

 Sustainable Materials



NEW
KIDS NIKE DRI-FIT STRIKE 26 SS TOP K HV8343 \$45.00

SIZES: XS, S, M, L, XL **FABRIC:** 100% polyester. **OFFER DATE:** 01/01/26 **END DATE:** 12/31/27
 Nike Dri-FIT technology moves sweat away from skin for quicker evaporation, helping athletes stay dry and comfortable. • Mesh panels provide breathability where athletes need it most. • Lightweight knit fabric has a soft, smooth feel. • Not too tight or overly baggy, this top is made with the classic Nike fit your athletes know and love.

- 010** Black/Wolf Grey/(White) **329** Green Spark/Wolf Grey/(White) **410** Mid Navy/Royal Blue/(White)
- 463** Royal Blue/Mid Navy/(White) **657** University Red/Black/(White)



CLOSE UP VIEW OF PIPING COLORS

 Sustainable Materials



NEW
KIDS NIKE DRI-FIT STRIKE 26 PANT KPZ
HV8395 \$75.00

SIZES: XS, S, M, L, XL **FABRIC:** Body: 91% polyester/9% spandex. Pocket Bags: 100% polyester.
OFFER DATE: 01/01/26 **END DATE:** 12/31/27

Nike Dri-FIT technology moves sweat away from skin for quicker evaporation, helping athletes stay dry and comfortable. • Two zippered side pockets offer plenty of secure storage options. • Lightweight knit fabric has a soft, smooth feel. • Mesh panels provide breathability where athletes need it most. • Zippers at the leg opening provide ease of on/off over shoes. • Not too tight or overly baggy, these pants are made with the classic Nike fit your athletes know and love.

- 010** Black/Black Mesh/White Mesh/Wolf Grey/(White)
- 410** Midnight Navy/Midnight Navy Mesh/White Mesh/Royal Blue/(White)



CLOSE UP VIEW OF PIPING COLORS



Sustainable Materials



NEW
KIDS NIKE DRI-FIT STRIKE 26 SHORT KZ
HV8365 \$45.00

SIZES: XS, S, M, L, XL **FABRIC:** 100% polyester.
OFFER DATE: 01/01/26 **END DATE:** 12/31/27

Nike Dri-FIT technology moves sweat away from skin for quicker evaporation, helping athletes stay dry and comfortable. • Elastic waistband with drawcord ensures a snug and secure fit. • Two zippered side pockets offer plenty of secure storage options. • Lightweight knit fabric has a soft, smooth feel. • Mesh panels provide breathability where athletes need it most. • Not too tight or overly baggy, these shorts are made with the classic Nike fit your athletes know and love.

- 010** Black/Black Mesh/White Mesh/Wolf Grey/(White)
- 410** Midnight Navy/Midnight Navy Mesh/White Mesh/Royal Blue/(White)



CLOSE UP VIEW OF PIPING COLORS



Sustainable Materials



KIDS NIKE DF KNIT ACADEMY 25 TRACK JACKET
FZ9851 \$60.00

SIZES: XS, S, M, L, XL
FABRIC: Body/panels/pocket bags: 100% polyester. Rib: 97% polyester/3% spandex.
OFFER DATE: 01/01/25 **END DATE:** 12/31/27

The Nike Academy 25 Track Jacket is designed to keep your players comfortable during chilly training sessions and pre-game warm-ups. Body is a Nike Dri-FIT woven fabric that moves sweat away to help keep athletes dry. This product is made with 100% recycled polyester fibers. Side panel construction uses a more efficient pattern to help reduce material waste.

- | | |
|---|--|
| 010 Black/Wolf Grey/White/(White) | 012 Wolf Grey/Black/White/(Black) |
| 100 White/Black/Wolf Grey/(Black) | 329 Green Spark/Black/White/(White) |
| 410 Midnight Navy/Royal Blue/White/(White) | 463 Royal Blue/Mid Navy/White/(White) |
| 657 University Red/Black/White/(White) | 719 Tour Yellow/Black/White/(Black) |



KIDS NIKE DF ACADEMY 25 DRILL TOP
FZ9773 \$55.00

SIZES: XS, S, M, L, XL **FABRIC:** 100% polyester.
OFFER DATE: 01/01/25 **END DATE:** 12/31/27

This long-sleeve soccer top features stretchy, sweat-wicking fabric with mesh side panels, helping keep players dry and comfortable on and off the field. This product is made with 100% recycled polyester fibers. Side panel construction uses a more efficient pattern to help reduce material waste.

- | | |
|---|---|
| 010 Black/Wolf Grey/White/(White) | 012 Wolf Grey/Black/White/(Black) |
| 100 White/Black/Wolf Grey/(Black) | 329 Green Spark/Black/White/(White) |
| 410 Midnight Navy/Royal Blue/White/(White) | 463 Royal Blue/Midnight Navy/White/(White) |
| 657 University Red/Black/White/(White) | 719 Tour Yellow/Black/White/(Black) |



**KIDS NIKE DF ACADEMY 25 SS TOP
FZ9758 \$30.00**

SIZES: XS, S, M, L, XL **FABRIC:** 100% polyester.
OFFER DATE: 01/01/25 **END DATE:** 12/31/27

This top features sweat-wicking fabric with mesh side and back panels to help keep players cool and dry during training. This product is made with 100% recycled polyester fibers. Side panel construction uses a more efficient pattern to help reduce material waste.

- 010** Black/Wolf Grey/White/(White)
- 100** White/Black/Wolf Grey/(Black)
- 410** Midnight Navy/Royal Blue/(White)
- 657** University Red/Black/White/(White)

- 012** Wolf Grey/Black/White/(Black)
- 329** Green Spark/Black/White/(White)
- 463** Royal Blue/Midnight Navy/White/(White)
- 719** Tour Yellow/Black/White/(Black)



**KIDS NIKE DF ACADEMY 25 SL TOP
FZ9751 \$30.00**

SIZES: XS, S, M, L, XL **FABRIC:** 100% polyester.
OFFER DATE: 01/01/25 **END DATE:** 12/31/27

This top features sweat-wicking fabric with mesh side and back panels to help keep players cool and dry during training. This product is made with 100% recycled polyester fibers. Side panel construction uses a more efficient pattern to help reduce material waste.

- 010** Black/Wolf Grey/White/(White)
- 100** White/Black/Wolf Grey/(Black)
- 410** Midnight Navy/Royal Blue/(White)
- 657** University Red/Black/White/(White)

- 012** Wolf Grey/Black/White/(Black)
- 329** Green Spark/Black/White/(White)
- 463** Royal Blue/Midnight Navy/White/(White)
- 719** Tour Yellow/Black/White/(Black)



**KIDS NIKE DF ACADEMY 25 PANT KPZ
FZ9816 \$55.00**

SIZES: XS, S, M, L, XL
FABRIC: 100% polyester.
OFFER DATE: 01/01/25
END DATE: 12/31/27

Let your players train in style and comfort with the Nike Academy 25 pants. Stretch fabric allows players to move freely while Dri-FIT technology helps them stay dry during play. Lower ankle zipper allows for easy removal over cleats. This product is made with 100% recycled polyester fibers. Side panel construction uses a more efficient pattern to help reduce material waste.

010 Black/White/(White)

410 Midnight Navy/White/(White)



Sustainable Materials



**KIDS NIKE DF ACADEMY 25 SHORT K
FZ9784 \$30.00**

SIZES: XS, S, M, L, XL
FABRIC: 100% polyester.
OFFER DATE: 01/01/25
END DATE: 12/31/27

Dri-FIT technology with mesh side panels and hem helps players stay dry and cool during training. Elastic waistband with drawcord helps ensure a snug and secure fit. This product is made with 100% recycled polyester fibers. Side panel construction uses a more efficient pattern to help reduce material waste.

010 Black/Black/(White)

410 Midnight Navy/Midnight Navy/(White)



Sustainable Materials



KIDS NIKE DRI-FIT ACADEMY PRO 24 TRACK JACKET K
FD7685 \$65.00

SIZES: XS, S, M, L, XL
FABRIC: 100% polyester.
OFFER DATE: 01/01/24
END DATE: 12/31/26

Help your team look and train like the pros. The Nike Dri-FIT Academy Pro 24 Track Jacket is designed to keep your players comfortable during chilly training sessions and pre-game warmups. Body is a Nike Dri-FIT knit fabric that moves sweat away to help keep players dry. This jacket is made with 100% recycled material and the back panel construction uses a more efficient pattern to help reduce material waste. Standard fit for classic feel and comfort. Zippered pockets for secure storage.



Sustainable Materials



- 010** Black/Black/Black/(White)
- 455** Obsidian/Obsidian/Obsidian/(White)
- 657** University Red/University Red/University Red/(White)
- 329** Green Spark/Green Spark/Green Spark/(White)
- 468** Royal Blue/Royal Blue/Royal Blue/(White)

**KIDS NIKE DRI-FIT ACADEMY PRO 24 DRILL TOP K
FD7671 \$60.00**

SIZES: XS, S, M, L, XL
FABRIC: 100% polyester.
OFFER DATE: 01/01/24
END DATE: 12/31/26

Help your team look and train like the pros in the Nike Dri-FIT Academy Pro 24 Drill Top. Lightweight ribbed material on back of the neck, shoulders and down through the arms. Body and sleeves are a Nike Dri-FIT knit fabric that moves sweat away to help keep players dry. This top is made with at least 100% recycled material. Back and side panel construction use a more efficient pattern to help reduce material waste. Standard fit for classic feel and comfort. Thumb loop at the end of sleeve opening.

- 010** Black/Black/White/(White) **329** Green Spark/Green Spark/White/(White)
- 455** Obsidian/Obsidian/White/(White) **467** Royal Blue/Royal Blue/White/(White)
- 657** University Red/University Red/Black/(White)



**KIDS NIKE DRI-FIT ACADEMY PRO 24 PANT KPZ
FD7679 \$60.00**

SIZES: XS, S, M, L, XL
FABRIC: 100% polyester.
OFFER DATE: 01/01/24
END DATE: 12/31/26

Help your team look and train like the pros. The Nike Dri-FIT Academy Pro 24 Pant is designed to keep your players comfortable during chilly training sessions and pre-game warmups. Lightweight rib material on the lower leg to enable mobility and range of motion. Body is a Nike Dri-FIT knit fabric that moves sweat away to help keep players dry. This pant is made with at least 75% recycled material and the interior gusset construction helps reduce material waste. Slim fit for tailored look and feel. Zippered pockets for secure storage. Lower ankle zipper allows for easy removal over cleats.

- 010** Black/(White) **451** Obsidian/(White)



**KIDS NIKE DRI-FIT ACADEMY PRO 24 SS TOP K
FD7597 \$35.00**

SIZES: XS, S, M, L, XL
FABRIC: 100% polyester.
OFFER DATE: 01/01/24
END DATE: 12/31/26

Help your team look and train like the pros in the Nike Dri-FIT Academy Pro 24 SS Top K. Lightweight rib material on the front and back neck wrapping the shoulders to the armhole. Body and sleeves are a Nike Dri-FIT knit fabric that moves sweat away to help keep players dry. This top is made with 100% recycled material and the side panel construction uses a more efficient pattern to help reduce material waste. Standard fit for classic feel and comfort.

- 010** Black/White/Black/(White)
- 458** Obsidian/White/Obsidian/(White)
- 657** University Red/Black/University Red/(White)

- 329** Green Spark/White/Green Spark/(White)
- 465** Royal Blue/White/Royal Blue/(White)



Sustainable Materials



**KIDS NIKE DRI-FIT ACADEMY PRO SHORT KZ
FD7657 \$35.00**

SIZES: XS, S, M, L, XL
FABRIC: 100% polyester.
OFFER DATE: 01/01/24
END DATE: 12/31/26

- 010** Black/(White)
- 451** Obsidian/(White)



Sustainable Materials



SIDE VIEW

KIDS NIKE THERMA-FIT ACADEMY PRO 24 SDF JACKET
FD7714 \$185.00

SIZES: XS, S, M, L, XL
FABRIC: 100% polyester.
OFFER DATE: 01/01/24
END DATE: 12/31/26

010 Black/(White)

451 Obsidian/(White)



BACK VIEW

KIDS NIKE THERMA-FIT ACADEMY PRO 24 FALL JACKET
FD7708 \$155.00

SIZES: XS, S, M, L, XL
FABRIC: 100% polyester.
OFFER DATE: 01/01/24
END DATE: 12/31/26

010 Black/(White)

451 Obsidian/(White)



BACK VIEW

**KIDS NIKE STORM-FIT ACADEMY PRO 25
RAIN JACKET
FZ9863 \$90.00**

SIZES: XS, S, M, L, XL
FABRIC: 100% polyester.
OFFER DATE: 01/01/25
END DATE: 12/31/27

Designed to keep your teams covered when the weather turns wet. Storm-FIT water-repellent finish with a back vent helps players stay warm and dry without overheating. A bungee cord lock allows the athlete to secure the hood to their personal preference. This product is made with 100% recycled polyester fibers. Side panel construction uses a more efficient pattern to help reduce material waste.



BACK VIEW

010 Black/(White)

410 Midnight Navy/(White)

NEW
KIDS NIKE THERMA-FIT PARK 26 SDF JACKET
HM7282 \$150.00

SIZES: XS, S, M, L, XL **FABRIC:** 100% polyester.
OFFER DATE: 01/01/26 **END DATE:** 12/31/31

Nike Therma-FIT technology helps manage the body's natural heat to help keep athletes warm in cold-weather conditions. • Fleece-lined hood helps provides warmth and comfort. • Water-repellent finish helps keep players dry in wet weather. • Two zippered side pockets offer plenty of secure storage options. • Not too tight or overly baggy, this jacket made with the classic Nike fit your athletes know and love.

010 Black/White/(White)

410 Midnight Navy/White/(White)



NEW
KIDS NIKE THERMA-FIT PARK 26 FALL JACKET
HM7274 \$120.00

SIZES: XS, S, M, L, XL **FABRIC:** 100% polyester.
OFFER DATE: 01/01/26 **END DATE:** 12/31/31

Nike Therma-FIT technology helps manage the body's natural heat to help keep athletes warm in cold-weather conditions. • Fleece-lined hood helps provides warmth and comfort. • Water-repellent finish helps keep players dry in wet weather. • Two zippered side pockets offer plenty of secure storage options. • Not too tight or overly baggy, this jacket made with the classic Nike fit your athletes know and love.

010 Black/White/(White)

410 Midnight Navy/White/(White)



NEW
KIDS NIKE DRI-FIT PARK 26 TRACK JACKET K
HM7256 \$45.00

SIZES: XS, S, M, L, XL **FABRIC:** 100% polyester.
OFFER DATE: 01/01/26 **END DATE:** 12/31/31

- | | | |
|-------------------------------------|---|--|
| 010 Black/White/(White) | 100 White/Black/(Black) | 410 Midnight Navy/White/(White) |
| 463 Royal Blue/White/(White) | 657 University Red/White/(White) | |



NEW
KIDS NIKE DRI-FIT PARK 26 DRILL TOP
IB7542 \$50.00

SIZES: XS, S, M, L, XL **FABRIC:** 100% polyester.
OFFER DATE: 01/01/26 **END DATE:** 12/31/31

Nike Dri-FIT technology moves sweat away from skin for quicker evaporation, helping athletes stay dry and comfortable. • Color pop piping on the neck opening and lower body. • Not too tight or overly baggy, this top is made with the classic Nike fit your athletes know and love.

- | | | |
|-------------------------------------|---|--|
| 010 Black/White/(White) | 100 White/Black/(Black) | 410 Midnight Navy/White/(White) |
| 463 Royal Blue/White/(White) | 657 University Red/White/(White) | |



NEW
KIDS NIKE DRI-FIT PARK 26 CREW TOP
HM7170 \$45.00

SIZES: XS, S, M, L, XL **FABRIC:** 100% polyester.
OFFER DATE: 01/01/26 **END DATE:** 12/31/31

Nike Dri-FIT technology moves sweat away from skin for quicker evaporation, helping athletes stay dry and comfortable. • Mesh piping provides a sporty visual with the opportunity to color pop. • Not too tight or overly baggy, this top is made with the classic Nike fit your athletes know and love.

- | | | |
|-------------------------------------|---|--|
| 010 Black/White/(White) | 100 White/Black/(Black) | 410 Midnight Navy/White/(White) |
| 463 Royal Blue/White/(White) | 657 University Red/White/(White) | |



NEW
KIDS NIKE DRI-FIT PARK 26 SS TOP
HM7134 \$20.00

SIZES: XS, S, M, L, XL **FABRIC:** 100% polyester.
OFFER DATE: 01/01/26 **END DATE:** 12/31/31

Nike Dri-FIT technology moves sweat away from skin for quicker evaporation, helping athletes stay dry and comfortable. • Mesh back provides breathability where athletes need it most. • Not too tight or overly baggy, this jersey is made with the classic Nike fit your athletes know and love.

- | | | |
|-------------------------------------|---|--|
| 010 Black/White/(White) | 100 White/Black/(Black) | 410 Midnight Navy/White/(White) |
| 463 Royal Blue/White/(White) | 657 University Red/White/(White) | |



NEW
KIDS NIKE DRI-FIT PARK 26 SHORT KZ
HM7164 \$30.00

SIZES: XS, S, M, L, XL **FABRIC:** 100% polyester.
OFFER DATE: 01/01/26 **END DATE:** 12/31/31

Nike Dri-FIT technology moves sweat away from skin for quicker evaporation, helping athletes stay dry and comfortable. •Elastic waistband with drawcord ensures a snug and secure fit. •Mesh piping provides a sporty visual with the opportunity to color pop. •Two zippered side pockets offer plenty of secure storage options. •Lightweight knit fabric has a soft, smooth feel. •Not too tight or overly baggy, these shorts are made with the classic Nike fit your athletes know and love.

- 010** Black/White/(White) **410** Midnight Navy/White/(White)



Sustainable Materials



NEW
KIDS NIKE DRI-FIT PARK 26 PANT KP
HM7212 \$35.00

SIZES: XS, S, M, L, XL **FABRIC:** 100% polyester.
OFFER DATE: 01/01/26 **END DATE:** 12/31/31

Nike Dri-FIT technology moves sweat away from skin for quicker evaporation, helping athletes stay dry and comfortable. •Elastic waistband with drawcord ensures a snug and secure fit. •Lightweight knit fabric has a soft, smooth feel. •Mesh piping provides a sporty visual with the opportunity to color pop. •Not too tight or overly baggy, these pants are made with the classic Nike fit your athletes know and love.

- 010** Black/(White) **410** Midnight Navy/(White)



Sustainable Materials



**KIDS NIKE DRY LS FIRSTLAYER JERSEY
AV2611 \$32.00**

SIZES: XS, S, M, L, XL
FABRIC: 100% polyester.
OFFER DATE: 01/01/20
END DATE: 12/31/26

Long sleeve top training top, Dri-FIT brushed body (front and back panel) for warmth, un-brushed sleeves to keep you cool and mobile, shoulder seam moved forward for comfort, standard fit top with soft hand feel brushed body (front and back panel) – subtle piping details for modern, but clean finish.

- 010** Black/(White) **100** White/(Cool Grey) **410** Midnight Navy/(White)



NEW
KIDS NIKE TEAM FZ HD RELENTLESS JACKET
HF6913 \$55.00

SIZES: XS, S, M, L, XL
FABRIC: 100% recycled polyester.
OFFER DATE: 04/01/25

We updated our fit, feel and fabric while still honoring this do-it-all style. New scuba hood, taping on the hem and armhole, raglan sleeve and 26 degree angle pocket entry speaks to Nike heritage design.
Body width: 17.5", Body length: 21" (size medium).

- | | | |
|---------------------------------|-----------------------------------|---------------------------------|
| 010 Black/(White) | 060 Anthracite/(White) | 341 Gorge Green/(White) |
| 419 College Navy/(White) | 493 Game Royal/(White) | 545 Field Purple/(White) |
| 610 Team Maroon/(White) | 657 University Red/(White) | 669 Deep Maroon/(White) |



NEW
KIDS NIKE TEAM FL RELENTLESS PANT
HF6914 \$45.00

SIZES: XS, S, M, L, XL
FABRIC: 100% recycled polyester.
OFFER DATE: 04/01/25

We updated our fit, feel and fabric while still honoring this do-it-all style. New ankle zippers and more tapered leg offers more versatility and style.
Hip width: 17.5", Inseam length: 24.75" (size medium).

- | | | |
|---------------------------------|-----------------------------------|---------------------------------|
| 010 Black/(White) | 060 Anthracite/(White) | 341 Gorge Green/(White) |
| 419 College Navy/(White) | 493 Game Royal/(White) | 545 Field Purple/(White) |
| 610 Team Maroon/(White) | 657 University Red/(White) | 669 Deep Maroon/(White) |



**KIDS NIKE TEAM CLUB PO HOODIE
CJ1773 \$45.00**

SIZES: S, M, L, XL
FABRIC: 80% cotton/20% polyester.
OFFER DATE: 04/01/20
END DATE: 04/01/28

The Nike Club Hoodie offers warm and soft brushed-back fleece and an adjustable hood to keep you covered when temperatures drop. Updates to the fit give you room to layer and move freely. Elastic cuffs and hem for a snug fit.

Body width: 17.25", Body length: 21.5" (size medium).

- | | | |
|-------------------------------|----------------------------------|--------------------------------------|
| 010 Black/(White) | 060 Anthracite/(White) | 063 Dark Grey Heather/(White) |
| 100 White/(Black) | 249 Brown/(White) | 315 Kelly Green/(White) |
| 341 Dark Green/(White) | 419 Navy/(White) | 448 Light Blue/(White) |
| 493 Royal/(White) | 545 Purple/(White) | 610 Cardinal/(White) |
| 657 Scarlet/(White) | 669 Dark Maroon/(White) | 716 Bright Gold/(Black) |
| 783 Vegas Gold/(Black) | 802 Desert Orange/(White) | 820 Orange/(White) |



**KIDS NIKE TEAM CLUB PANT
CJ1813 \$45.00**

SIZES: S, M, L, XL
FABRIC: 80% cotton/20% polyester.
OFFER DATE: 04/01/20
END DATE: 04/01/28

The Nike Club Pants combine classic style with soft fleece for all day comfort. Premium brushed-back fleece is soft, warm and comfortable. Elastic waistband with drawcord has a snug fit. Elastic cuffs let you show off your kicks.

Hip width: 16", Inseam length: 25.75" (size medium).

- | | | |
|----------------------------|--------------------------------|--------------------------------------|
| 010 Black/(White) | 060 Anthracite/(White) | 063 Dark Grey Heather/(White) |
| 100 White/(Black) | 341 Dark Green/(White) | 419 Navy/(White) |
| 493 Royal/(White) | 545 Purple/(White) | 610 Cardinal/(White) |
| 657 Scarlet/(White) | 669 Dark Maroon/(White) | |



**BOYS NIKE PRO SS FITTED TOP
DH4835 \$30.00**

SIZES: XS, S, M, L, XL
FABRIC: 92% polyester/8% spandex.
OFFER DATE: 01/01/22
END DATE: 04/01/27

The Nike Pro Top is made of stretchy, sweat-wicking fabric to help keep you dry, cool and comfortable. Wear it as a base layer or your only layer to tackle your next challenge.
Body width: 15.75", Body length: 23" (size medium).

- | | | |
|-------------------------------|-----------------------------------|---------------------------------|
| 010 Black/(White) | 100 White/(Black) | 419 College Navy/(White) |
| 493 Game Royal/(White) | 657 University Red/(White) | |



**BOYS NIKE PRO SHORT
DH4821 \$30.00**

SIZES: S, M, L, XL, 2XL, 3XL
FABRIC: 93% polyester/7% spandex.
OFFER DATE: 01/01/22
END DATE: 04/01/27

Reach your goals in the Nike Pro Shorts. An excellent base layer, the design is breathable and super stretchy to keep things snug while you train. Dri-FIT technology helps you stay dry when it's time to dominate.
Hip width: 13", Inseam length: 6.5" (size medium).

- | | | |
|---------------------------------|------------------------------------|-----------------------------------|
| 010 Black/(White) | 073 Dark Steel Grey/(Black) | 100 White/(Black) |
| 419 College Navy/(White) | 493 Game Royal/(White) | 657 University Red/(White) |



BACK VIEW

**BOYS NIKE DRY FRANCHISE POLO
DJ5155 \$35.00**

SIZES: XS, S, M, L, XL
FABRIC: 100% polyester.
OFFER DATE: 04/01/22
END DATE: 04/01/27

Crafted with soft, sweat-wicking fabric, the Nike Dri-FIT Polo helps keep you dry and comfortable as you rep your team. Customize the colors and Swoosh design for a look your team can be proud of.

Body width: 15.5", Body length: 23" (size medium).

- | | | |
|------------------------------------|-------------------------------------|-------------------------------------|
| 010 Black/(White) | 060 Anthracite/(White) | 100 White/(Black) |
| 249 Team Brown/(White) | 341 Team Dark Green/(White) | 377 Team Kelly Green/(White) |
| 419 Team Navy/(White) | 448 Team Light Blue/(White) | 493 Team Royal/(White) |
| 545 Team Purple/(White) | 610 Team Cardinal/(White) | 613 Team Crimson/(White) |
| 657 Team Scarlet/(White) | 669 Team Dark Maroon/(White) | 716 Team Bright Gold/(White) |
| 783 Team Vegas Gold/(White) | 802 Desert Orange/(White) | 820 Team Orange/(White) |



**KIDS NIKE LEGEND LONG SLEEVE TOP
DV7315 \$28.00**

SIZES: S, M, L, XL
FABRIC: Body: 100% polyester.
OFFER DATE: 04/01/23

Dri-FIT fabric wicks away sweat to help keep you comfortable and dry. Long-sleeve construction is ideal for a variety of training conditions. Neck tape added for durability and comfort. Swoosh design trademark at upper left chest. **Body width: 16.5", Body length: 23.25" (size medium).**
Part of Tee/Fleece Embellishment Program.

- | | | |
|--------------------------------------|--|---------------------------------------|
| 010 Black/(Cool Grey) | 091 Carbon Heather/(Black) | 100 White/(Cool Grey) |
| 249 Dark Cinder/(Cool Grey) | 341 Gorge Green/(Cool Grey) | 419 College Navy/(Cool Grey) |
| 448 Valor Blue/(Cool Grey) | 493 Game Royal/(Cool Grey) | 545 Court Purple/(Cool Grey) |
| 610 Team Maroon/(Cool Grey) | 613 Team Crimson/(Cool Grey) | 657 University Red/(Cool Grey) |
| 669 Deep Maroon/(Cool Grey) | 716 Sundown/(Cool Grey) | 783 Team Gold/(Cool Grey) |
| 802 Desert Orange/(Cool Grey) | 813 University Orange/(Cool Grey) | 873 Bright Ceramic/(Cool Grey) |



**KIDS NIKE LEGEND SHORT SLEEVE TOP
DV7317 \$23.00**

SIZES: S, M, L, XL
FABRIC: Body: 100% polyester.
OFFER DATE: 04/01/23

Dri-FIT fabric wicks away sweat to help keep you comfortable and dry. Short-sleeve construction is ideal for a variety of training conditions. Neck tape added for durability and comfort. Swoosh design trademark at upper left chest. **Body width: 16.5", Body length: 23.25" (size medium).**
Part of Tee/Fleece Embellishment Program.

- | | | |
|---|--|---------------------------------------|
| 010 Black/(Cool Grey) | 091 Carbon Heather/(Black) | 100 White/(Cool Grey) |
| 249 Dark Cinder/(Cool Grey) | 315 Apple Green/(Cool Grey) | 341 Gorge Green/(Cool Grey) |
| 419 College Navy/(Cool Grey) | 448 Valor Blue/(Cool Grey) | 493 Game Royal/(Cool Grey) |
| 545 Court Purple/(Cool Grey) | 610 Team Maroon/(Cool Grey) | 613 Team Crimson/(Cool Grey) |
| 653 Shy Pink/(Cool Grey) <i>NEW</i> | 657 University Red/(Cool Grey) | 669 Deep Maroon/(Cool Grey) |
| 700 Yellow Strike/(Cool Grey) <i>NEW</i> | 716 Sundown/(Cool Grey) | 783 Team Gold/(Cool Grey) |
| 802 Desert Orange/(Cool Grey) | 813 University Orange/(Cool Grey) | 873 Bright Ceramic/(Cool Grey) |



**KIDS NIKE CORE LS COTTON CREW
CJ1777 \$22.00**

SIZES: S, M, L, XL
FABRIC: 100% cotton for white and color; 80% cotton/20% polyester for grey heather.
OFFER DATE: 10/01/19

Combed, ring-spun long sleeve tee with reinforced neck and a premium feel.
Body width: 16.5", Body length: 23.25" (size medium).
Part of Tee/Fleece Embellishment Program.

- | | | |
|----------------------------|------------------------------|------------------------|
| 010 Black | 075 Dark Grey Heather | 100 White |
| 341 Noble Green | 419 College Navy | 448 Valor Blue |
| 493 Game Royal | 545 New Orchid | 610 Team Maroon |
| 613 Team Crimson | 657 University Red | 669 Deep Maroon |
| 716 University Gold | 783 Team Gold | |



**KIDS NIKE CORE SS COTTON CREW
CJ1781 \$16.00**

SIZES: S, M, L, XL
FABRIC: 100% cotton for white and color; 80% cotton/20% polyester for grey heather.
OFFER DATE: 10/01/19

Combed, ring-spun short sleeve tee with reinforced neck and a premium feel.
Body width: 16.5", Body length: 23.25" (size medium).
Part of Tee/Fleece Embellishment Program.

- | | | |
|------------------------|------------------------------|---------------------------|
| 010 Black | 075 Dark Grey Heather | 100 White |
| 315 Apple Green | 341 Noble Green | 419 College Navy |
| 448 Valor Blue | 493 Game Royal | 545 New Orchid |
| 610 Team Maroon | 613 Team Crimson | 657 University Red |
| 669 Deep Maroon | 716 University Gold | 783 Team Gold |
| 820 Team Orange | 873 Bright Ceramic | |



NEW
KIDS NIKE TEAM TOTALITY KNIT SHORT
UNLINED
HF6912 \$30.00

SIZES: XS, S, M, L, XL
FABRIC: 100% recycled polyester.
OFFER DATE: 04/01/25
END DATE: 04/01/28

Soft knit fabric is comfortable and breathable. Side mobility vent, easily accessible hand pockets and secure drawcord waistband allow you versatility in movement.

Hip width: 17.5", Inseam length: 4.5" (size medium).

- | | | |
|---------------------------------|-----------------------------------|--------------------------------|
| 010 Black/(White) | 060 Anthracite/(White) | 100 White/(Black) |
| 341 Gorge Green/(White) | 419 College Navy/(White) | 448 Valor Blue/(White) |
| 493 Game Royal/(White) | 545 Field Purple/(White) | 610 Team Maroon/(White) |
| 613 Team Crimson/(White) | 657 University Red/(White) | 820 Team Orange/(White) |



KIDS NIKE TEAM DRI-FIT ATTACK SHORT
FJ9867 \$30.00

SIZES: XS, S, M, L, XL
FABRIC: 100% polyester.
OFFER DATE: 07/01/24
END DATE: 04/01/28

The Nike Attack shorts are a versatile short that provides comfort and coverage during training. Built with Nike Dri-FIT recycled material and UV protection, plus two pockets for storage.

Hip width: 18.5", Inseam length: 3.75" (size medium).

- | | | |
|---------------------------------|---------------------------------|-----------------------------------|
| 010 Black/(White) | 052 Anthracite/(White) | 100 White/(Black) |
| 341 Gorge Green/(White) | 419 College Navy/(White) | 493 Game Royal/(White) |
| 545 Field Purple/(White) | 610 Team Maroon/(White) | 657 University Red/(White) |



WAISTBAND DOWN VIEW

**NIKE TEAM DF FLEX WOVEN SHORT
POCKETS
FD6682 \$32.00**

SIZES: XS, S, M, L, XL
FABRIC: 100% polyester.
OFFER DATE: 04/01/24
END DATE: 04/01/26

The Nike Dri-FIT Flex Shorts are made to keep you moving during high-intensity training. Nike Flex fabric stretches with every move, while vents at the hems are ideal for deep bends like lunges and squats. Customize the colors for a team-right look. With pockets.

Hip width: 17.25", Inseam length: 7" (size medium).

- | | | |
|---------------------------------|-----------------------------------|---------------------------------|
| 010 Black/(White) | 060 Anthracite/(White) | 341 Gorge Green/(White) |
| 419 College Navy/(White) | 493 Game Royal/(White) | 545 Field Purple/(White) |
| 610 Team Maroon/(White) | 657 University Red/(White) | 669 Deep Maroon/(White) |



**KIDS NIKE TEAM DF FLEX WOVEN SHORT
NO POCKETS
DJ8694 \$30.00**

SIZES: XS, S, M, L, XL
FABRIC: 100% polyester.
OFFER DATE: 04/01/22
END DATE: 04/01/26

The Nike Dri-FIT Flex Shorts are made to keep you moving during high-intensity training. Nike Flex fabric stretches with every move, while vents at the hems are ideal for deep bends like lunges and squats. Customize the colors for a team-right look. No pockets.

Hip width: 17.25", Inseam length: 7" (size medium).

- | | | |
|----------------------------------|------------------------------------|-------------------------------------|
| 010 Black/(White) | 060 Team Anthracite/(White) | 341 Team Dark Green/(White) |
| 419 Team Navy/(White) | 493 Team Royal/(White) | 545 Team Purple/(White) |
| 610 Team Cardinal/(White) | 657 Team Scarlet/(White) | 669 Team Dark Maroon/(White) |





NIKE CLUB TEAM SWOOSH ROLLER BAG 3.0
BA5199 \$95.00

SIZES: Misc OFFER DATE: 01/01/20

010 Black/Black/(White)



NIKE ACADEMY TEAM BACKPACK 2.3
DVO761 \$57.00

SIZES: Misc OFFER DATE: 07/01/22 END DATE: 12/31/26

Tough 600D polyester • Large dual-zippered main compartment • Zippered wet/dry compartment • Laser perforations help enhance ventilation • Haul loop at top for alternative carry option • Padded curved shoulder straps • Padded back panel • Mesh side pocket for water bottle storage • Front pocket holds up to a size 5 ball
DIMENSIONS: 19" H x 14" W x 6.5" D

011 Black/Black/(White)

410 Midnight Navy/Midnight Navy/(White)

657 University Red/University Red/(White)

065 Cool Grey/Cool Grey/(White)

480 Game Royal/Game Royal/(White)



NIKE BRASILIA LARGE DUFFEL 9.5
DO9193 \$52.00

SIZES: Misc OFFER DATE: 07/01/22 END DATE: 07/01/26

Tough 600D polyester • Durable 300D polyester • Detachable shoulder strap • Ventilated shoe or wet/dry storage • Secure zip pocket • Limited lifetime guarantee • Screened Swoosh design trademark
DIMENSIONS: 28" L x 12" W x 14" H

010 Black/Black/(White)



NIKE BRASILIA BACKPACK XL 9.5
DM3975 \$57.00

SIZES: Misc OFFER DATE: 07/01/22 END DATE: 07/01/26

Tough 600D polyester • Durable 300D polyester • Multiple pockets for organization • Water bottle pocket • Screened Swoosh branding
DIMENSIONS: 19" H x 13" W x 10.5" D

010 Black/Black/(White)

068 Iron Grey/Black/(White)

410 Midnight Navy/Black/(White)



NIKE BRASILIA MEDIUM BACKPACK 9.5
DH7709 \$45.00

SIZES: Misc OFFER DATE: 07/01/22 END DATE: 07/01/26

Durable, heavyweight 600D polyester • Large zippered main compartment • Medium-sized zippered compartment • Interior small-item zippered pocket • Separate, padded internal sleeve • Padded shoulder strap • Side mesh pockets • Limited lifetime guarantee • Screened Swoosh design trademark
DIMENSIONS: 18" H x 12" W x 7" D

010 Black/Black/(White)

068 Iron Grey/Black/(White)

410 Midnight Navy/Black/(White)



NIKE BRASILIA MEDIUM DUFFEL 9.5
DH7710 \$42.00

SIZES: Misc OFFER DATE: 07/01/22 END DATE: 07/01/26

Tough 600D polyester • Durable 300D polyester • Detachable shoulder strap • Ventilated shoe or wet/dry storage • Secure zip pocket • Limited lifetime guarantee • Screened Swoosh design trademark
DIMENSIONS: 24" L x 11" W x 13" H

010 Black/Black/(White)

068 Iron Grey/Black/(White)

410 Midnight Navy/Black/(White)



NIKE BRASILIA SMALL DUFFEL 9.5
DM3976 \$37.00

SIZES: Misc **OFFER DATE:** 07/01/22 **END DATE:** 07/01/26
 Tough 600D polyester • Durable 300D polyester • Detachable shoulder strap
 • Ventilated shoe or wet/dry storage • Secure zip pocket • Limited lifetime guarantee
 • Screened Swoosh design trademark
DIMENSIONS: 20" L x 10" W x 11" H

- 010** Black/Black/(White)
- 068** Iron Grey/Black/(White)
- 410** Midnight Navy/Black/(White)



NIKE BRASILIA XSMALL DUFFEL 9.5
DM3977 \$32.00

SIZES: Misc **OFFER DATE:** 07/01/22 **END DATE:** 07/01/26
 Tough 600D polyester • Durable 300D polyester • Detachable shoulder strap
 • Ventilated shoe or wet/dry storage • Secure zip pocket • Limited lifetime guarantee
 • Screened Swoosh design trademark
DIMENSIONS: 20" L x 10" W x 11" H

- 010** Black/Black/(White)
- 410** Midnight Navy/Black/(White)



NIKE BRASILIA SHOE BAG 9.5
DM3982 \$22.00

SIZES: Misc **OFFER DATE:** 07/01/22 **END DATE:** 07/01/26
 The Nike Utility Shoe Tote helps keep your shoes separate from the rest of your gear between home, work and the gym. The ventilated design is made of tough fabric and includes an outside pocket and handles for convenience.
DIMENSIONS: 12" L x 6" W x 7" H

- 010** Black/Black/(White)



NIKE BRASILIA DRAWSTRING 9.5
DM3978 \$18.00

SIZES: Misc **OFFER DATE:** 07/01/22 **END DATE:** 07/01/26
 Tough 600D polyester • Durable 300D polyester • Drawstring closure / Easy access to contents • Zippered front pocket • Screened Swoosh branding
DIMENSIONS: 20" H x 15" W x 2" D

- 010** Black/Black/(White)
- 068** Iron Grey/Black/(White)
- 410** Midnight Navy/Black/(White)



**NIKE NFHS CLUB ELITE TEAM
FZ7549 \$62.00**

SIZES: 5
FABRIC: 40% rubber/40% synthetic leather/15% synthetic/5% cotton.
OFFER DATE: 04/01/24

The NFHS Club Elite Team Soccer Ball is ready to fly into the back of the net. A textured casing with stabilizing grooves gives you consistent touch when passing, shooting and dribbling. Nike Aerowsculpt technology uses molded grooves for more consistent flight. Textured casing offers great touch and feel on your foot. 12-panel design provides true and accurate ball flight. Rubber bladder helps maintain air pressure and shape.

100 White/Black/(Metallic Silver)



**NIKE FUTSAL PRO - TEAM
DH1992 \$42.00**

FABRIC: 60% rubber/15% polyurethane/13% polyester/12% EVA.
OFFER DATE: 04/01/24

The Nike Futsal Pro Soccer Ball provides exceptional touch and control for the small-sided game. It has a textured casing with high-contrast graphics making it easy to track across the pitch.

100 White/Volt/(Silver)

[NIKETEAM.COM](https://www.niketeam.com)

