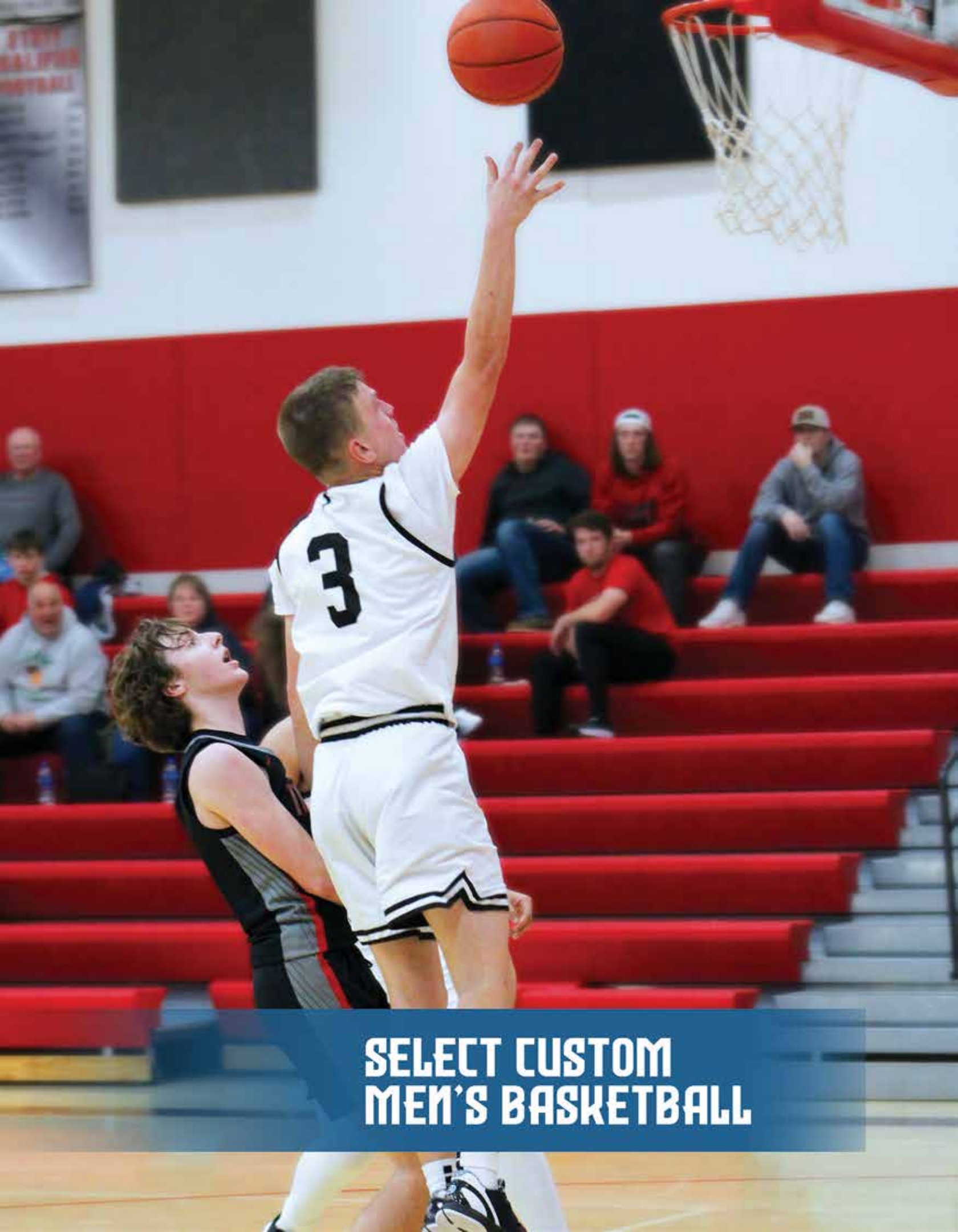




POWERS^{MFG}
WINTER
2023

Effective February 27, 2023



**SELECT CUSTOM
MEN'S BASKETBALL**



STYLE 550/551 * NEW STYLE *

Features

- Fully sublimated jersey & short
- 1/2" V-neck and armhole trim
- Multi-needle 2" gripper elastic waistband with drawstring
- 8" Standard Inseam



STYLE 546/547 * NEW STYLE *

Features

- Fully sublimated jersey & short
- 1" self material V-neck and armhole trim
- Multi-needle 2" gripper elastic waistband with drawstring
- 8" Standard Inseam



Create your own mock up on the Powers Uniform Builder at www.powerscustomuniforms.com

MEN'S JERSEY		MEN'S SHORT		MEN'S JERSEY		MEN'S SHORT	
PK550JM-308	\$93.00	PK551SM-308 (1 ply)	\$93.00	PK546JM-308	\$93.00	PK547SM-308 (1 ply)	\$93.00
PK550JM-98	\$102.00	PK551SM-98 (1 ply)	\$102.00	PK546JM-98	\$102.00	PK547SM-98 (1 ply)	\$102.00





STYLE 544/545

Features

- Fully sublimated jersey & short
- 3/4" self material V-neck
- Hemmed armholes
- Multi-needle 2" gripper elastic waistband with drawstring



STYLE 532/533



Features:

- Fully sublimated jersey & short
- 1" self material V-neck
- Hemmed armholes
- Multi-needle 2" gripper elastic waistband with drawstring

Create your own mock up on the Powers Uniform Builder at www.powerscustomuniforms.com

MEN'S JERSEY

PK544JM-308 \$93.00
 PK544JM-98 \$102.00

MEN'S SHORT

PK545SM-308 (1 ply) \$93.00
 PK545SM-98 (1 ply) \$102.00

MEN'S JERSEY

PK532JM-308 \$93.00
 PK532JM-98 \$102.00

MEN'S SHORT

PK533SM-308 (1 ply) \$93.00
 PK533SM-98 (1 ply) \$102.00



STYLE 528/529

- Features:**
- Fully sublimated jersey & short
 - 1/2" self material V-neck
 - Hemmed armholes
 - Multi-needle 2" gripper elastic waistband with drawstring



STYLE 526/527

- Features:**
- Fully sublimated jersey & short
 - 1" self material V-neck
 - Hemmed armholes
 - Multi-needle 2" gripper elastic waistband with drawstring



Create your own mock up on the Powers Uniform Builder at www.powerscustomuniforms.com

MEN'S JERSEY		MEN'S SHORT		MEN'S JERSEY		MEN'S SHORT	
PK528JM-308	\$93.00	PK529SM-308 (1 ply)	\$93.00	PK526JM-308	\$93.00	PK527SM-308 (1 ply)	\$93.00
PK528JM-98	\$102.00	PK529SM-98 (1 ply)	\$102.00	PK526JM-98	\$102.00	PK527SM-98 (1 ply)	\$102.00





STYLE 524/525

Features:

- Fully sublimated jersey & short
- 1" self material V-neck
- Hemmed armholes
- Multi-needle 2" gripper elastic waistband with drawstring



STYLE 522/523

Features:

- Fully sublimated jersey & short
- 1/2" self material V-neck
- Hemmed armholes
- Multi-needle 2" gripper elastic waistband with drawstring

Create your own mock up on the Powers Uniform Builder at www.powerscustomuniforms.com

MEN'S JERSEY

PK524JM-308 \$93.00
PK524JM-98 \$102.00

MEN'S SHORT

PK525SM-308 (1 ply) \$93.00
PK525SM-98 (1 ply) \$102.00

MEN'S JERSEY

PK522JM-308 \$93.00
PK522JM-98 \$102.00

MEN'S SHORT

PK523SM-308 (1 ply) \$93.00
PK523SM-98 (1 ply) \$102.00





STYLE 516/517

Features

- Fully sublimated jersey & short
- 1/2" V-neck and armhole trim
- Multi-needle 2" gripper elastic waistband with drawstring



STYLE 514/515

Features

- Fully sublimated jersey & short
- 1/2" V-neck and armhole trim
- Multi-needle 2" gripper elastic waistband with drawstring



Create your own mock up on the Powers Uniform Builder at www.powerscustomuniforms.com

MEN'S JERSEY

PK516JM-308	\$93.00
PK516JM-98	\$102.00

MEN'S SHORT

PK517SM-308 (1 ply)	\$93.00
PK517SM-98 (1 ply)	\$102.00

MEN'S JERSEY

PK514JM-308	\$93.00
PK514JM-98	\$102.00

MEN'S SHORT

PK515SM-308 (1 ply)	\$93.00
PK515SM-98 (1 ply)	\$102.00





STYLE 508/509

Features

- Fully sublimated jersey & short
- 1/2" V-neck and armhole trim
- Multi-needle 2" gripper elastic waistband with drawstring



STYLE 506/507

Features

- Fully sublimated jersey & short
- 1/2" V-neck and armhole trim
- Multi-needle 2" gripper elastic waistband with drawstring



Create your own mock up on the Powers Uniform Builder at www.powerscustomuniforms.com

MEN'S JERSEY
PK508JM-308 \$93.00
PK508JM-98 \$102.00

MEN'S SHORT
PK509SM-308 (1 ply) \$93.00
PK509SM-98 (1 ply) \$102.00

MEN'S JERSEY
PK506JM-308 \$93.00
PK506JM-98 \$102.00

MEN'S SHORT
PK507SM-308 (1 ply) \$93.00
PK507SM-98 (1 ply) \$102.00





STYLE 502/503

Features

- Fully sublimated jersey & short
- Sublimated neck and armhole binding
- Multi-needle 2" gripper elastic waistband with drawstring

MEN'S JERSEY

PK502JM-308	\$93.00
PK502JM-98	\$102.00

MEN'S SHORT

PK503SM-308 (1 ply)	\$105.00
PK503SM-98 (1 ply)	\$114.00



STYLE 500/501

Features

- Fully sublimated jersey & short
- 1/2" V-neck and armhole trim
- Multi-needle 2" gripper elastic waistband with drawstring

MEN'S JERSEY

PK500JM-308	\$93.00
PK500JM-98	\$102.00

MEN'S SHORT

PK501SM-308 (1 ply)	\$93.00
PK501SM-98 (1 ply)	\$102.00



ORDERING

ORDER BY / SHIP BY

Per delivery schedule.

MINIMUMS

No minimums or small quantity charge

SIZES AND FIT

MEN'S SIZES

- Alpha sizing only (S-3XL)
- Graded body lengths - Jersey
- Graded rise - Short

MEN'S SIZE CHART

	S	M	L	XL	2XL	3XL
Chest	36	40	44	48	52	56
Waist	28	32	36	40	44	48
Inseam	9	9	9	9	9	9

ALTERATIONS

MEN'S JERSEY

- None

MEN'S SHORTS

- 1" extra inseam 1.50
- 2" extra inseam 3.00
- 3" extra inseam 4.50
- 1" or 2" shorter inseam* N/C

* Shorter inseam not available on styles 533, 531, 527, 523

LETTERING DETAILS

JERSEY

Style pricing includes: Team name, numbers and 1 logo (1 location)

Team Name

- 1 or 2 color with 1 or 2 lines of lettering
- 2" to 4" tall on front location 100
- Available fonts and arrangements shown on next page

Numbers

- 1 or 2 color
- 4", 5", or 6" front numbers at location 101
- 6" or 8" back numbers at location 301
- Available fonts shown on next page

Logos

Max Sizes and Locations

- All styles except 130: 3"x3" location 314
- Style 522: 2"x 3 1/4" location 314

SHORT

Style pricing includes: logos (1 or 2 locations)

ORDER CHANGES

Changes must be received within 1 week of order acknowledgement

OVERSIZE UPCHARGES

\$5.00 upcharge for size 3XL

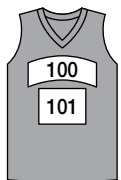
* 8" Standard inseam on styles 547, 551

SHORT (Continued)

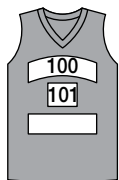
Men's Logos / Max Sizes and Locations

- Style 551: 3" x 3" locations 605, 606 or 806
- Style 547: 3" x 3" locations 503, 504 or 804
- Style 545: 3" x 3" locations 605, 606 or 806
- Style 533: 2 1/4" x 3 1/2" locations 607, 608 or 808
- Style 531: 3" x 4" locations 503, 504, or 804
- Style 529: 3 1/2" x 4" locations 605, 606 or 806
- Style 527: 4 1/4" x 4" locations 607, 608 or 808
- Style 525: 2 1/2" x 2 1/2" locations 605, 606 or 806
- Style 523: 4" x 4" locations 605, 606 or 806
- Style 517: 3" x 3" locations 519, 520 or 820
4" x 4" locations 605, 606 or 806
- Style 515: 3" x 3" locations 503, 504 or 804
3" x 3" locations 519, 520 or 820
3" x 3" locations 605, 606 or 806
3" x 3" locations 607, 608 or 808
- Style 509: 3" x 3" locations 519, 520, 820, 605, 606 or 806
- Style 507: 3" x 3" locations 519, 520, 820, 503, 504, or 804
2 1/2" x 2 1/2" at 605, 606 or 806
- Style 503: 3" x 3" locations 519, 520, 820, 503, 504 or 804
- Style 501: 3" x 3" locations 519, 520 or 820
2 1/2" x 4" at 605, 606 or 806

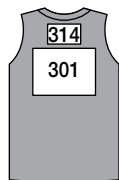
LETTERING LOCATIONS



FRONT



FRONT



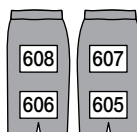
BACK



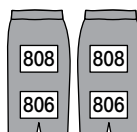
FRONT



BOTH FRONT



SIDE



BOTH SIDES

TEAM NAME ARRANGEMENTS



LETTERING & NUMBERING FONTS

ATHLETIC GOTHIC SHADOW *

ABCDEFGHIJKLMNOPQRSTUVWXYZ
1 2 3 4 5 6 7 8 9 0

ATHLETIC SHADOW *

ABCDEFGHIJKLMNOPQRSTUVWXYZ
1 2 3 4 5 6 7 8 9 0

CAXTON

ABCDEFGHIJKLMNOPQRSTUVWXYZ
1 2 3 4 5 6 7 8 9 0

FULL BLOCK

ABCDEFGHIJKLMNOPQRSTUVWXYZ
1 2 3 4 5 6 7 8 9 0

FULL BLOCK OUTLINE

ABCDEFGHIJKLMNOPQRSTUVWXYZ
1 2 3 4 5 6 7 8 9 0

GOTHIC

ABCDEFGHIJKLMNOPQRSTUVWXYZ
1 2 3 4 5 6 7 8 9 0

KANSAS BLOCK

ABCDEFGHIJKLMNOPQRSTUVWXYZ
1 2 3 4 5 6 7 8 9 0

MIAMI

ABCDEFGHIJKLMNOPQRSTUVWXYZ
1 2 3 4 5 6 7 8 9 0

SYRACUSE

ABCDEFGHIJKLMNOPQRSTUVWXYZ
1 2 3 4 5 6 7 8 9 0

TRUE BLOCK

ABCDEFGHIJKLMNOPQRSTUVWXYZ
1 2 3 4 5 6 7 8 9 0

WARRIOR

ABCDEFGHIJKLMNOPQRSTUVWXYZ
1 2 3 4 5 6 7 8 9 0

PLAIN BLOCK

ABCDEFGHIJKLMNOPQRSTUVWXYZ

SCRIPT

ABCDEFGHIJKLMNOPQRSTUVWXYZ

PADRES

ABCDEFGHIJKLMNOPQRSTUVWXYZ

OLD ENGLISH

ABCDEFGHIJKLMNOPQRSTUVWXYZ

CONVERSION ATHLETIC SHADOW *

ABCDEFGHIJKLMNOPQRSTUVWXYZ
1 2 3 4 5 6 7 8 9 0

CONVERSION FULL BLOCK

ABCDEFGHIJKLMNOPQRSTUVWXYZ
1 2 3 4 5 6 7 8 9 0

JET

ABCDEFGHIJKLMNOPQRSTUVWXYZ
1 2 3 4 5 6 7 8 9 0

MONOLITH

ABCDEFGHIJKLMNOPQRSTUVWXYZ
1 2 3 4 5 6 7 8 9 0

PRO BLOCK

ABCDEFGHIJKLMNOPQRSTUVWXYZ
1 2 3 4 5 6 7 8 9 0

ROCK

ABCDEFGHIJKLMNOPQRSTUVWXYZ
1 2 3 4 5 6 7 8 9 0

STINGER

ABCDEFGHIJKLMNOPQRSTUVWXYZ
1 2 3 4 5 6 7 8 9 0

STEEL

ABCDEFGHIJKLMNOPQRSTUVWXYZ
1 2 3 4 5 6 7 8 9 0

FABRIC & COLOR CHART

	White	Grey	Silver Grey	Baseball Grey	Cool Grey	Graphite	Black	Maroon	Cardinal	University Red	Dark Orange	Steeltown Gold	Team Vegas Gold	Team Kelly Green	Forest Green	Carolina Blue	Royal	Midnight Navy	Purple	Cleveland Brown	Pink	Powers Pink	Tropic Pink	Texas Orange	Gold Rush	Coastal Teal
98	Pointelle Mesh - 92% Poly, 8% Spandex																									
308	Ice Mesh - 100% Polyester																									
	Sublimation Lettering																									

Indicates Moisture Management

Note: Orders are accepted subject to our ability to secure desired fabrics from our suppliers. Color shade shown on color chart is not an exact representation of the actual color of fabric.

TACKLE TWILL PRICING - (SUBLIMATED)

LETTERS

Prices per letter	1 Color	2 Color
2"	4.50	6.50
3"	5.00	7.50
4"	5.50	8.50

NUMBERS

Prices per digit	1 Color	2 Color
4"	5.50	8.50
5"	6.00	9.00
6"	6.50	10.00
8"	7.00	10.50





**SELECT CUSTOM
WOMEN'S BASKETBALL**



STYLE 552/553 * NEW STYLE *

Features:

- Fully sublimated jersey & short
- 1/2" V-neck and armhole trim
- Multi-needle 2" gripper elastic waistband with drawstring
- 8" Standard Inseam



STYLE 548/549 * NEW STYLE *

Features:

- Fully sublimated jersey & short
- 1/2" V-neck and armhole trim
- Multi-needle 2" gripper elastic waistband with drawstring
- 8" Standard Inseam



Create your own mock up on the Powers Uniform Builder at
www.powerscustomuniforms.com

WOMEN'S JERSEY

PK552JW-308 \$93.00
 PK552JW-98 \$102.00

WOMEN'S SHORT

PK553SW-308 (1 ply) \$93.00
 PK553SW-98 (1 ply) \$102.00

WOMEN'S JERSEY

PK548JW-308 \$93.00
 PK548JW-98 \$102.00

WOMEN'S SHORT

PK549SW-308 (1 ply) \$93.00
 PK549SW-98 (1 ply) \$102.00





STYLE 544/545

Features:

- Fully sublimated jersey & short
- 3/4" Self material V-neck
- Hemmed armholes
- Multi-needle 2" gripper elastic waistband with drawstring



STYLE 542/543

Features:

- Fully sublimated jersey & short
- 3/4" Self material V-neck
- Hemmed armholes
- Multi-needle 2" gripper elastic waistband with drawstring

Create your own mock up on the Powers Uniform Builder at www.powerscustomuniforms.com

WOMEN'S JERSEY	
PK544JW-308	\$93.00
PK544JW-98	\$102.00

WOMEN'S SHORT	
PK545SW-308 (1 ply)	\$93.00
PK545SW-98 (1 ply)	\$102.00

WOMEN'S JERSEY	
PK542JW-308	\$93.00
PK542JW-98	\$102.00

WOMEN'S SHORT	
PK543SW-308 (1 ply)	\$93.00
PK543SW-98 (1 ply)	\$102.00





STYLE 540/541

Features:

- Fully sublimated jersey & short
- 3/4" Self material V-neck
- Hemmed armholes
- Multi-needle 2" gripper elastic waistband with drawstring



STYLE 538/539

Features:

- Fully sublimated jersey & short
- 1/2" Self material V-neck
- Hemmed armholes
- Multi-needle 2" gripper elastic waistband with drawstring

Create your own mock up on the Powers Uniform Builder at www.powerscustomuniforms.com

WOMEN'S JERSEY		WOMEN'S SHORT		WOMEN'S JERSEY		WOMEN'S SHORT	
PK540JW-308	\$93.00	PK541SW-308 (1 ply)	\$93.00	PK538JW-308	\$93.00	PK539SW-308 (1 ply)	\$93.00
PK540JW-98	\$102.00	PK541SW-98 (1 ply)	\$102.00	PK538JW-98	\$102.00	PK539SW-98 (1 ply)	\$102.00





STYLE 522/523

Features:

- Fully sublimated jersey & short
- 1/2" Self material V-neck
- Hemmed armholes
- Multi-needle 2" gripper elastic waistband with drawstring



STYLE 518/519

Features:

- Fully sublimated jersey & short
- 3/4" Self material V-neck
- Hemmed armholes
- Multi-needle 2" gripper elastic waistband with drawstring



Create your own mock up on the Powers Uniform Builder at
www.powerscustomuniforms.com

WOMEN'S JERSEY

PK522JW-308 \$93.00
 PK522JW-98 \$102.00

WOMEN'S SHORT

PK523SW-308 (1 ply) \$93.00
 PK523SW-98 (1 ply) \$102.00

WOMEN'S JERSEY

PK518JW-308 \$93.00
 PK518JW-98 \$102.00

WOMEN'S SHORT

PK519SW-308 (1 ply) \$93.00
 PK519SW-98 (1 ply) \$102.00





STYLE 516/517

- Features:**
- Fully sublimated jersey & short
 - 1/2" V-neck
 - Hemmed armholes
 - Multi-needle 2" gripper elastic waistband with drawstring



STYLE 514/515

- Features:**
- Fully sublimated jersey & short
 - 1/2" V-neck
 - Hemmed armholes
 - Multi-needle 2" gripper elastic waistband with drawstring



Create your own mock up on the Powers Uniform Builder at www.powerscustomuniforms.com

WOMEN'S JERSEY		WOMEN'S SHORT		WOMEN'S JERSEY		WOMEN'S SHORT	
PK516JW-308	\$93.00	PK517SW-308 (1 ply)	\$93.00	PK514JW-308	\$93.00	PK515SW-308 (1 ply)	\$93.00
PK516JW-98	\$102.00	PK517SW-98 (1 ply)	\$102.00	PK514JW-98	\$102.00	PK515SW-98 (1 ply)	\$102.00





STYLE 512/513

Features:

- Fully sublimated jersey & short
- 1/2" V-neck and armhole trim
- Multi-needle 2" gripper elastic waistband with drawstring



STYLE 510/511



Features:

- Fully sublimated jersey & short
- 3/4" V-neck
- Hemmed armholes
- Multi-needle 2" gripper elastic waistband with drawstring

Create your own mock up on the Powers Uniform Builder at
www.powerscustomuniforms.com

WOMEN'S JERSEY

PK512JW-308 \$93.00
 PK512JW-98 \$102.00

WOMEN'S SHORT

PK513SW-308 (1 ply) \$93.00
 PK513SW-98 (1 ply) \$102.00

WOMEN'S JERSEY

PK510JW-308 \$93.00
 PK510JW-98 \$102.00

WOMEN'S SHORT

PK511SW-308 (1 ply) \$93.00
 PK511SW-98 (1 ply) \$102.00





STYLE 504/505

Features:

- Fully sublimated jersey & short
- 3/4" V-neck
- Hemmed armholes
- Multi-needle 2" gripper elastic waistband with drawstring



STYLE 502/503

Features:

- Fully sublimated jersey & short
- Sublimated neck and armhole binding
- Multi-needle 2" gripper elastic waistband with drawstring

WOMEN'S JERSEY

PK504JW-308	\$93.00
PK504JW-98	\$102.00

WOMEN'S SHORT

PK505SW-308 (1 ply)	\$93.00
PK505SW-98 (1 ply)	\$102.00

WOMEN'S JERSEY

PK502JW-308	\$93.00
PK502JW-98	\$102.00

WOMEN'S SHORT

PK503SW-308 (1 ply)	\$105.00
PK503SW-98 (1 ply)	\$114.00



ORDERING

ORDER BY / SHIP BY

Per delivery schedule.

MINIMUMS

No minimums or small quantity charge

SIZES AND FIT

WOMEN'S SIZES

- Alpha sizing only (S-3XL)
- Graded body lengths - Jersey
- Graded rise - Short

WOMEN'S SIZE CHART

	S	M	L	XL	2XL	3XL
Chest	32	36	40	44	48	52
Waist	24	28	32	36	40	44
Inseam	9	9	9	9	9	9

ALTERATIONS

WOMEN'S JERSEY

- None

WOMEN'S SHORTS

- 1" extra inseam 1.50
- 2" extra inseam 3.00
- 3" extra inseam 4.50
- 1" or 2" shorter inseam* N/C

* Shorter inseam not available on styles 541, 539, 535

LETTERING DETAILS

JERSEY

Style pricing includes: Team name, numbers and 1 logo (1 location)

Team Name

- 1 or 2 color with 1 or 2 lines of lettering
- 2" to 4" tall on front location 100
- Available fonts and arrangements shown on next page

Numbers

- 1 or 2 color
- 4", 5", or 6" front numbers at location 101
- 6" or 8" back numbers at location 301
- Available fonts shown on next page

Logos

Max Sizes and Locations

- All styles except 510 & 130: 3"x3" location 314
- Styles 504 & 510: 2 1/2" x 2 1/2" location 314
- Style 522: 2" x 3 1/4" location 314

SHORT

Style pricing includes: logos (1 or 2 locations)

ORDER CHANGES

Changes must be received within 1 week of order acknowledgement

OVERSIZE UPCHARGES

\$5.00 upcharge for size 3XL

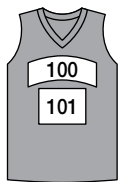
* 8" Standard inseam on styles 549, 553

SHORT (Continued)

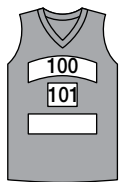
Women's Logos / Max Sizes and Locations

- Style 555: 3" x 3" locations 503, 504 or 804
- Style 549: 3" x 3" locations 605, 606 or 806
- Style 545: 3" x 3" locations 605, 606 or 806
- Style 543: 3 1/2" x 3" locations 605, 606 or 806
- Style 541: 10 3/4" x 2 1/2" locations 605, 606 or 806
- Style 535: 2 3/4" x 3 3/4" locations 607, 608, or 808
- Style 523: 4" x 4" locations 605, 606 or 806
- Style 539: 4 1/4" x 3" locations 607, 608, or 808
- Style 519: 3 1/2" x 3 1/2" location 605, 606 or 806
- Style 517: 3" x 3" locations 519, 520, 820, 605, 606, 806
- Style 515: 3" x 3" locations 503, 504 or 804
3" x 3" locations 519, 520 or 820
3" x 3" locations 605, 606 or 806
3" x 3" locations 607, 608 or 808
- Style 513: 3" x 3" locations 519, 520, 820, 605, 606, 806
503, 504 or 804
- Style 511: 3" x 3" locations 519, 520, 820, 605, 606, 806
503, 504 or 804
- Style 505: 3" x 3" locations 519, 520, 820, 605, 606, 806
503, 504 or 804
- Style 503: 3" x 3" locations 519, 520, 820, 503, 504 or 804

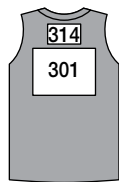
LETTERING LOCATIONS



FRONT



FRONT



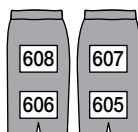
BACK



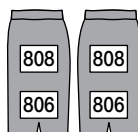
FRONT



BOTH FRONT



SIDE



BOTH SIDES

TEAM NAME ARRANGEMENTS

STRAIGHT	FANNED ARCH	VERTICAL ARCH	VERTICAL ARCH / STRAIGHT (2 LINES)
POWERS 23	POWERS 23	POWERS 23	POWERS 23 MFG

LETTERING & NUMBERING FONTS

ATHLETIC GOTHIC SHADOW *

ABCDEFGHIJKLMNOPQRSTUVWXYZ
1 2 3 4 5 6 7 8 9 0

ATHLETIC SHADOW *

ABCDEFGHIJKLMNOPQRSTUVWXYZ
1 2 3 4 5 6 7 8 9 0

CAXTON

ABCDEFGHIJKLMNOPQRSTUVWXYZ
1 2 3 4 5 6 7 8 9 0

FULL BLOCK

ABCDEFGHIJKLMNOPQRSTUVWXYZ
1 2 3 4 5 6 7 8 9 0

FULL BLOCK OUTLINE

ABCDEFGHIJKLMNOPQRSTUVWXYZ
1 2 3 4 5 6 7 8 9 0

GOTHIC

ABCDEFGHIJKLMNOPQRSTUVWXYZ
1 2 3 4 5 6 7 8 9 0

KANSAS BLOCK

ABCDEFGHIJKLMNOPQRSTUVWXYZ
1 2 3 4 5 6 7 8 9 0

MIAMI

ABCDEFGHIJKLMNOPQRSTUVWXYZ
1 2 3 4 5 6 7 8 9 0

SYRACUSE

ABCDEFGHIJKLMNOPQRSTUVWXYZ
1 2 3 4 5 6 7 8 9 0

TRUE BLOCK

ABCDEFGHIJKLMNOPQRSTUVWXYZ
1 2 3 4 5 6 7 8 9 0

WARRIOR

ABCDEFGHIJKLMNOPQRSTUVWXYZ
1 2 3 4 5 6 7 8 9 0

PLAIN BLOCK

ABCDEFGHIJKLMNOPQRSTUVWXYZ

SCRIPT

ABCDEFGHIJKLMNOPQRSTUVWXYZ

PADRES

ABCDEFGHIJKLMNOPQRSTUVWXYZ

OLD ENGLISH

ABCDEFGHIJKLMNOPQRSTUVWXYZ

CONVERSION ATHLETIC SHADOW *

ABCDEFGHIJKLMNOPQRSTUVWXYZ
1 2 3 4 5 6 7 8 9 0

CONVERSION FULL BLOCK

ABCDEFGHIJKLMNOPQRSTUVWXYZ
1 2 3 4 5 6 7 8 9 0

JET

ABCDEFGHIJKLMNOPQRSTUVWXYZ
1 2 3 4 5 6 7 8 9 0

MONOLITH

ABCDEFGHIJKLMNOPQRSTUVWXYZ
1 2 3 4 5 6 7 8 9 0

PRO BLOCK

ABCDEFGHIJKLMNOPQRSTUVWXYZ
1 2 3 4 5 6 7 8 9 0

ROCK

ABCDEFGHIJKLMNOPQRSTUVWXYZ
1 2 3 4 5 6 7 8 9 0

STINGER

ABCDEFGHIJKLMNOPQRSTUVWXYZ
1 2 3 4 5 6 7 8 9 0

STEEL

ABCDEFGHIJKLMNOPQRSTUVWXYZ
1 2 3 4 5 6 7 8 9 0

FABRIC & COLOR CHART

	White	Grey	Silver Grey	Baseball Grey	Cool Grey	Graphite	Black	Maroon	Cardinal	University Red	Dark Orange	Steeltown Gold	Team Vegas Gold	Team Kelly Green	Forest Green	Carolina Blue	Royal	Midnight Navy	Purple	Cleveland Brown	Pink	Powers Pink	Tropic Pink	Texas Orange	Gold Rush	Coastal Teal
98 Pointelle Mesh - 92% Poly, 8% Spandex																										
308 Ice Mesh - 100% Polyester																										
Sublimation Lettering																										

Indicates Moisture Management

Note: Orders are accepted subject to our ability to secure desired fabrics from our suppliers. Color shade shown on color chart is not an exact representation of the actual color of fabric.

TACKLE TWILL PRICING - (SUBLIMATED)

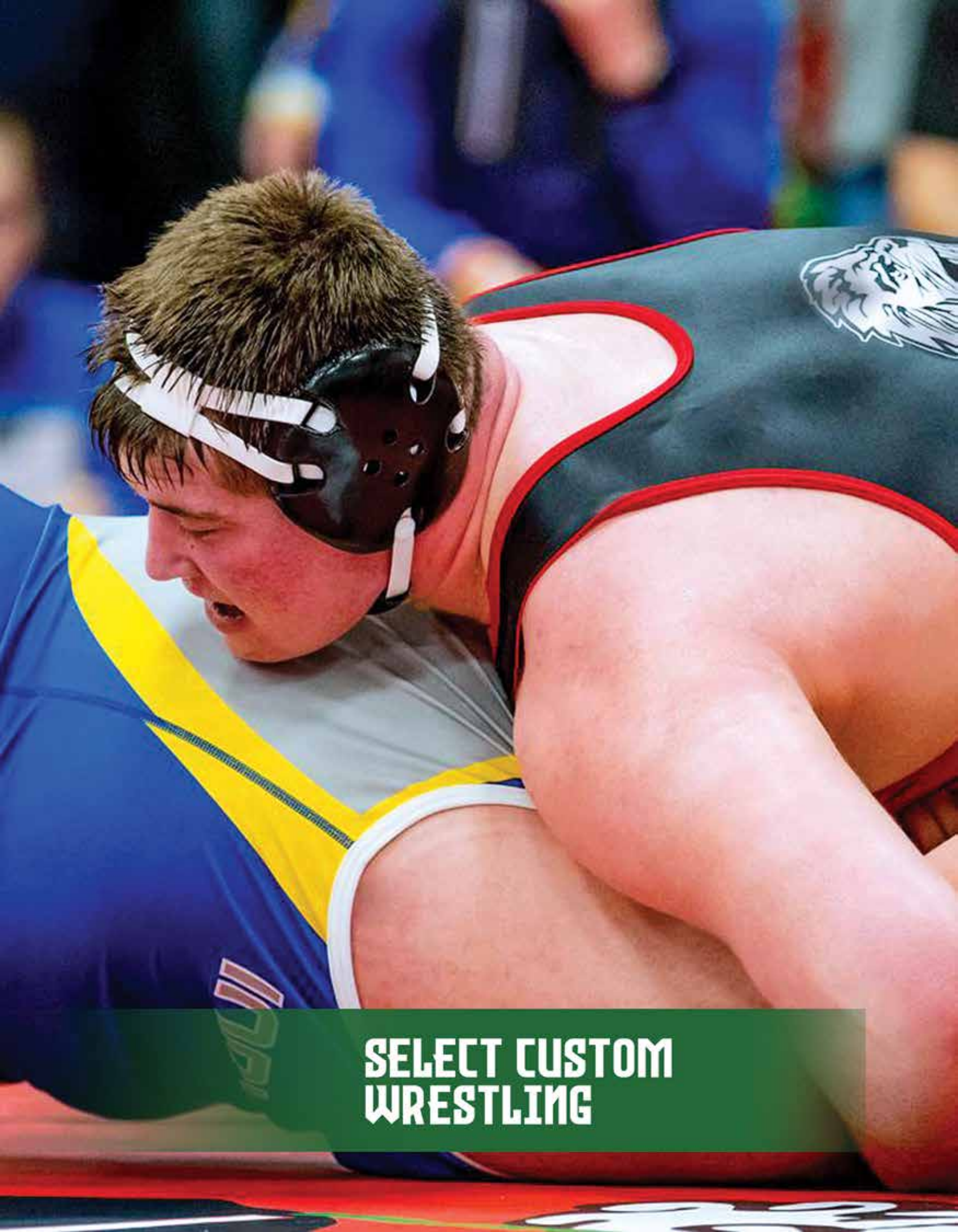
LETTERS

Prices per letter	1 Color	2 Color
2"	4.50	6.50
3"	5.00	7.50
4"	5.50	8.50

NUMBERS

Prices per digit	1 Color	2 Color
4"	5.50	8.50
5"	6.00	9.00
6"	6.50	10.00
8"	7.50	10.50





**SELECT CUSTOM
WRESTLING**



STYLE 517 * NEW STYLE *

Singlet Features

- Fully sublimated singlet
- Neck and armhole binding
- 1" encased elastic bottom leg hem
- 490 fabric with 98 fabric upper back



STYLE 516

Singlet Features

- Fully sublimated singlet
- Neck and armhole binding
- 1" encased elastic bottom leg hem
- Sublimated print patterns are available for the binding and bottom leg hem of style 516. Wave, frenzy, circuit or camo patterns only. (Sublimated print patterns found on page 29)
- 490 fabric

Create your own mock up on the Powers Uniform Builder at www.powerscustomuniforms.com

MEN'S SINGLET
PW517SM \$115.00

WOMEN'S SINGLET
PW517SW \$115.00

MEN'S SINGLET
PW516SM \$120.00

WOMEN'S SINGLET
PW516SW \$120.00

YOUTH SINGLET
PW517SY \$90.00

YOUTH SINGLET
PW516SY \$95.00





Back View

STYLE 511



Singlet Features

- Fully sublimated singlet
- Neck and armhole binding
- 1" encased elastic bottom leg hem
- Sublimated print patterns are available for the back of style 511 (Sublimated print patterns found on page 29)
- 390 fabric



STYLE 510



Singlet Features

- Fully sublimated singlet
- Neck and armhole binding
- 1" encased elastic bottom leg hem
- Sublimated print patterns are available for the side of style 510 (Sublimated print patterns found on page 29)
- 390 fabric

Create your own mock up on the Powers Uniform Builder at www.powerscustomuniforms.com

MEN'S SINGLET
PW511SM \$120.00

WOMEN'S SINGLET
PW511SW \$120.00

MEN'S SINGLET
PW510SM \$120.00

WOMEN'S SINGLET
PW510SW \$120.00

YOUTH SINGLET
PW511SY \$90.00

YOUTH SINGLET
PW510SY \$90.00





STYLE 509



Singlet Features

- Fully sublimated singlet
- Neck and armhole binding
- 1" encased elastic bottom leg hem
- 390 fabric



STYLE 508



Singlet Features

- Fully sublimated singlet
- Neck and armhole binding
- 1" encased elastic bottom leg hem
- 390 fabric

Create your own mock up on the Powers Uniform Builder at www.powerscustomuniforms.com

MEN'S SINGLET
PW509SM \$120.00

WOMEN'S SINGLET
PW509SW \$120.00

MEN'S SINGLET
PW508SM \$120.00

WOMEN'S SINGLET
PW508SW \$120.00

YOUTH SINGLET
PW509SY \$90.00

YOUTH SINGLET
PW508SY \$90.00





STYLE 502

Singlet Features

- Fully sublimated singlet
- Neck and armhole binding
- 1" gripper elastic in bottom leg hem
- 390 fabric



STYLE 501

Singlet Features

- Fully sublimated singlet
- Neck and armhole binding
- 1" gripper elastic in bottom leg hem
- 390 fabric



Create your own mock up on the Powers Uniform Builder at www.powerscustomuniforms.com

MEN'S SINGLET
PW502SM \$120.00

YOUTH SINGLET
PW502SY \$90.00

MEN'S SINGLET
PW501SM \$120.00

YOUTH SINGLET
PW501SY \$90.00





STYLE 500



Singlet Features

- Fully sublimated singlet
- Neck and armhole binding
- 1" gripper elastic in bottom leg hem
- 390 fabric

Create your own mock up on the Powers
Uniform Builder at
www.powerscustomuniforms.com

MEN'S SINGLET
PW500SM \$120.00

YOUTH SINGLET
PW500SY \$90.00





STYLE 514/515

Compression Shirt Features

- Fully sublimated
- 3/4" ring neck (Men's), 1/2" ring neck (Women's/Youth)
- Set-in sleeves
- Drop tail back

Fight Short Features

- Fully sublimated
- Fight label
- Multi-needle 2" gripper elastic waistband with drawstring



STYLE 512/513

Compression Shirt Features

- Fully sublimated
- 3/4" ring neck (Men's), 1/2" ring neck (Women's/Youth)
- Set-in sleeves
- Drop tail back

Fight Short Features

- Fully sublimated
- Fight label
- Multi-needle 2" gripper elastic waistband with drawstring



Create your own mock up on the Powers Uniform Builder at www.powerscustomuniforms.com

MEN'S COMPRESSION SHIRT
PW514JM \$80.00

MEN'S FIGHT SHORT
PW515FM (1 ply) \$110.00

MEN'S COMPRESSION SHIRT
PW512JM \$80.00

MEN'S FIGHT SHORT
PW513FM (1 ply) \$110.00

WOMEN'S COMPRESSION SHIRT
PW514JW \$80.00

WOMEN'S FIGHT SHORT
PW515FW (1 ply) \$110.00

WOMEN'S COMPRESSION SHIRT
PW512JW \$80.00

WOMEN'S FIGHT SHORT
PW513FW (1 ply) \$110.00

YOUTH COMPRESSION SHIRT
PW514JY \$65.00

YOUTH FIGHT SHORT
PW515FY (1 ply) \$85.00

YOUTH COMPRESSION SHIRT
PW512JY \$65.00

YOUTH FIGHT SHORT
PW513FY (1 ply) \$85.00



STYLE 505/506

Compression Shirt Features

- Fully sublimated
- 3/4" ring neck
- Set-in sleeves
- Drop tail back

Fight Short Features

- Fully sublimated
- Fight label
- Multi-needle 2" gripper elastic waistband with drawstring



STYLE 503/504

Compression Shirt Features

- Fully sublimated
- 3/4" ring neck
- Set-in sleeves
- Drop tail back

Fight Short Features

- Fully sublimated
- Fight label
- Multi-needle 2" gripper elastic waistband with drawstring



Create your own mock up on the Powers Uniform Builder at
www.powerscustomuniforms.com

MEN'S COMPRESSION SHIRT
 PW505JM \$80.00

MEN'S FIGHT SHORT
 PW506FM (1 ply) \$110.00

MEN'S COMPRESSION SHIRT
 PW503JM \$80.00

MEN'S FIGHT SHORT
 PW504FM (1 ply) \$110.00



ORDERING

ORDER BY / SHIP BY
Per delivery schedule.

MINIMUMS
No minimums or small quantity charge

ORDER CHANGES
Changes must be received within 1 week of order acknowledgement

OVERSIZE UPCHARGES
\$5.00 upcharge for size 3XL

SIZES AND FIT

MEN'S SIZES

- Alpha sizing only (XS-3XL)
- Graded body lengths

WOMEN'S SIZES

- Alpha sizing only (XS-3XL)
- Graded body lengths

YOUTH SIZES

- Alpha sizing only (YXS-YL)
- Graded body lengths

MEN'S AND WOMEN'S SIZE CHART (Suggested)

Weight Range (lbs)	Singlet Size
105 - 120	XS - S
120 - 135	S - M
135 - 150	M
150 - 165	M - L
165 - 180	L - XL
180 - 195	XL - 2XL
195 - 210	XL - 2XL
210 - 225	2XL
225 - 240	2XL - 3XL
240 - 255	2XL - 3XL
255 - 270	2XL - 3XL
270 - 285	3XL
285 - 300	3XL

YOUTH SIZE CHART (Suggested)

Weight Range (lbs)	Singlet Size
30 - 45	YXS
45 - 60	YS
60 - 75	YM - YL
75 - 90	YL - XS
90 - 105	YL - XS

SUBLIMATED PATTERNS



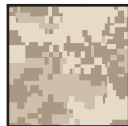
SOLID



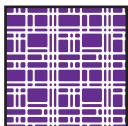
ARROW



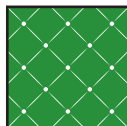
BARRICADE



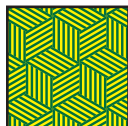
CAMO



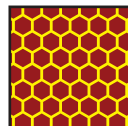
CIRCUIT



CROSSHATCH



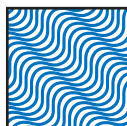
FRENZY



HONEYCOMB



METAL GRID



WAVE

These sublimated print patterns are available on singlet styles 511 and 510. Style 516 available with wave, frenzy, circuit or camo patterns only.

ALTERATIONS

- None

LETTERING DETAILS

SINGLET & COMPRESSION SHIRT
Style pricing includes: Team name and logos

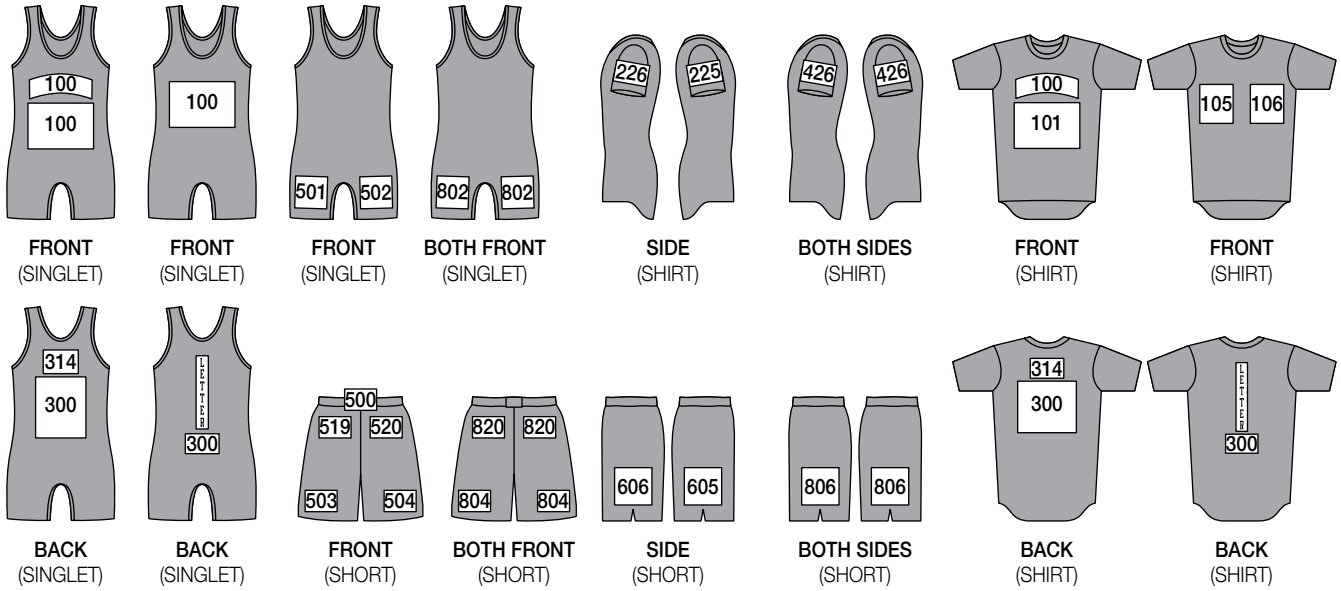
FIGHT SHORT
Style pricing includes: logos

TEAM NAME ARRANGEMENTS

STRAIGHT	FANNED ARCH	VERTICAL ARCH	STACKED
POWERS	POWERS	POWERS	POWERS



LETTERING LOCATIONS



LETTERING FONTS

ATHLETIC GOTHIC SHADOW
ABCDEFGHIJKLMNOPQRSTUVWXYZ

ATHLETIC SHADOW
ABCDEFGHIJKLMNOPQRSTUVWXYZ

CAXTON
ABCDEFGHIJKLMNOPQRSTUVWXYZ

FULL BLOCK
ABCDEFGHIJKLMNOPQRSTUVWXYZ

FULL BLOCK OUTLINE
ABCDEFGHIJKLMNOPQRSTUVWXYZ

GOTHIC
ABCDEFGHIJKLMNOPQRSTUVWXYZ

KANSAS BLOCK
ABCDEFGHIJKLMNOPQRSTUVWXYZ

MIAMI
ABCDEFGHIJKLMNOPQRSTUVWXYZ

SYRACUSE
ABCDEFGHIJKLMNOPQRSTUVWXYZ

TRUE BLOCK
ABCDEFGHIJKLMNOPQRSTUVWXYZ

WARRIOR
ABCDEFGHIJKLMNOPQRSTUVWXYZ

PLAIN BLOCK
ABCDEFGHIJKLMNOPQRSTUVWXYZ

SCRIPT
ABCDEFGHIJKLMNOPQRSTUVWXYZ

PADRES
ABCDEFGHIJKLMNOPQRSTUVWXYZ

OLD ENGLISH
ABCDEFGHIJKLMNOPQRSTUVWXYZ

CONVERSION ATHLETIC SHADOW
ABCDEFGHIJKLMNOPQRSTUVWXYZ

CONVERSION FULL BLOCK
ABCDEFGHIJKLMNOPQRSTUVWXYZ

JET
ABCDEFGHIJKLMNOPQRSTUVWXYZ

MONOLITH
ABCDEFGHIJKLMNOPQRSTUVWXYZ

PRO BLOCK
ABCDEFGHIJKLMNOPQRSTUVWXYZ

ROCK
ABCDEFGHIJKLMNOPQRSTUVWXYZ

STINGER
ABCDEFGHIJKLMNOPQRSTUVWXYZ

STEEL
ABCDEFGHIJKLMNOPQRSTUVWXYZ

FABRIC & COLOR CHART

	White	Grey	Silver Grey	Baseball Grey	Cool Grey	Graphite	Black	Maroon	Cardinal	University Red	Dark Orange	Steeltown Gold	Team Vegas Gold	Team Kelly Green	Forest Green	Carolina Blue	Royal	Midnight Navy	Purple	Cleveland Brown	Pink	Powers Pink	Tropic Pink	Texas Orange	Gold Rush	Coastal Teal
29 4 Way Stretch (Compression Top) - 90% Poly, 10% Span. ♦																										
98 Pointelle Mesh (Upper Back 517 styles) - 92% Poly, 8% Span. ♦																										
290 Stretch Woven (Fight Short) - 92% Poly, 8% Spandex ♦																										
390 Mock Negative (Singlet) - 81% Polyester 19% Spandex ♦																										
490 Lightweight Spandex (Singlet) - 73% Poly, 27% Span. ♦																										
Sublimation Lettering																										

♦ Indicates Moisture Management

Note: Orders are accepted subject to our ability to secure desired fabrics from our suppliers. Color shade shown on color chart is not an exact representation of the actual color of fabric.

POWERS:

Powers supplies the finest athletic uniforms available. Living up to our motto "built up to a standard, not down to a price" is of vital concern to us. We also strive for the reliability of our acknowledged shipping dates. We work to keep our prices as low as possible, and we are proud of recent improvements and efficiencies which further this goal.

WE SELL ONLY THROUGH AUTHORIZED DEALERS.**PRICES:**

All prices shown herein are suggested list, and are subject to change without notice. Every effort will be made to furnish advance notice of price changes to our dealers.

ACKNOWLEDGEMENTS:

Prices shown on acknowledgements are not to be construed as invoice prices or quotations, since they are subject to correction at the time the invoice is prepared.

TERMS:

Net 30 days, F.O.B. Waterloo, Iowa. Past-due accounts will be charged interest at rates permitted by law.

SERVICE AND QUANTITY CHARGES:

SPECIAL ORDERS: Garments of the same style, material, and color: single items add 100%; 2-4 pieces add 50%; 5 pieces add 25%. In-stock items: \$10.00 list service charge on orders totaling less than \$100 list. In-stock items may be combined with other in-stock items to avoid service charge.

ORDER CHANGES:

After an order has been entered into production, cancellation will be possible only if the dealer will accept billing for work completed prior to cancellation. After an order has been booked with correct and complete specifications, any additions, deletions or changes (if possible) are subject to a \$20.00 service charge.

ORDER INFORMATION:

After an order has entered production, cancellation will be possible only if the dealer will accept billing for work completed prior to cancellation. **CHECK ACKNOWLEDGEMENTS CAREFULLY UPON RECEIPT.** Written confirmations must follow all telephone orders immediately, or responsibility for errors is entirely the dealer's. Fill-in orders should include the original Powers order number, and specifications should be copied from the invoice rather than from the acknowledgement of the original order.

DELIVERY:

Ship dates indicated on acknowledgements are estimated dates. Every effort will be made to ship on or before the acknowledged date, but Powers will not be responsible for special shipping charges incurred to meet user's requirements if we are unable to hold to schedule. Inquiries on the status of an order **MUST** include the Powers order number.

LOSS OR DAMAGE IN TRANSIT:

Shipment should be checked upon delivery. Any damages or shortages should be noted on the carriers delivery receipt and reported to the carrier's local office.

RETURNS:

Returns for any reason must be authorized, and garments must be cleaned. Unlaundered garments must be refused by state regulation. Returns **MUST** include the Powers order number, detailed information on the history of the garment, and reason for the return. It is a Powers policy that no claims for defective material or workmanship will be considered after the playing season has ended. Defects make themselves apparent at once, and must be called to our attention immediately. Products not returned within 60 days of the end of the playing season will not receive consideration for no charge adjustments. Repair work necessitated by normal wear and tear should be done by reputable reconditioner; we are not set up to handle work of this kind and we will refuse it.

LEGALITY:

It is the responsibility of the user to provide specifications for the legal uniforms. Neither Powers nor our dealers can be responsible for rules infractions.

COLOR MATCHING:

All dye lots of yarn and materials will vary from lot to lot and users must be prepared to accept slight color variations from order to order. We do our utmost to provide consistency. Users must also accept shade differences when ordering same color tops and bottoms in different materials.

CARE:

All our garments include tags with care instructions that should be consistently followed. Uniform life can be dramatically prolonged by strict adherence to our laundering instructions, which prohibit water hotter than 110 degrees, and the use of bleaches or alkaline products of any kind. Cold laundry water is also to be avoided, as some dyes can release color in very cold water. Never allow uniforms to be piled together while wet or still damp, since even the best color-fast dyes can migrate under such conditions and cause blotching in areas of contrasting color.

SHORTAGES

While unusual, shortages must be reported within 10 days of invoice.

NATIONAL SALES POLICY

Our national sales policy states: Powers will support the dealer who initiates order specifications in areas of overlapping distribution. While Powers does not intend to violate any legal requirements that may apply to this policy, adherence to our position will foster a harmonious environment among all Powers dealers. Powers will not ask a distributor to withdraw from a transaction when it is unclear who is the originator of the specifications.

FREIGHT CHARGES - RETURNS

It will be the dealer's responsibility to pay for all freight charges associated with the return of any Powers products. If the return is a result of a defect or an incorrectly produced product, Powers will credit back the cost to return those products. If a product is returned and a defect is not discovered, freight credit will not be allowed. The final decision regarding freight allowances will be at factory discretion.

POWERS MANUFACTURING / PO Box 2157, Waterloo, IA 50704-2157 / 1340 Sycamore Street Waterloo, IA 50703
Phone 319-233-6118 / Toll Free Phone 800-408-3589

www.powersathletic.com

Uniform Builder: www.powerscustomuniforms.com / Email Orders to: customerservice@powersathletic.com

Facebook: Powers Manufacturing Company / Instagram: @powersathletic / Twitter: @powersathletic