

Ripon Jacket[®]



Swimming
Track & Field

Thomas



844.69.RIPON

FIND US ON

WWW.RIPONATHLETIC.COM



MADE IN
USA





SIZE CHART GUIDELINE

MENS:

SIZE:	X SMALL	SMALL	MEDIUM	LARGE	X LARGE	XX LARGE
TOP:	30-32	34-36	38-40	42-44	46-48	50-52
BOTTOM:	22-24	26-28	30-32	34-36	38-40	42-44

WOMENS:

SIZE:	X SMALL	SMALL	MEDIUM	LARGE	X LARGE	XX LARGE
TOP:	28-30	32-34	36-38	40-42	44-46	48-50
BOTTOM:	20-24	24-26	28-30	32-34	36-38	40-42

CONTACT CUSTOMER SERVICE FOR 3XL-6XL MEASUREMENTS

#1000

AWARD JACKET

- 80% pure wool; 20% nylon body
- Steer hide leather double welt pocket tabs
- Steer hide leather set-in sleeves (3 pc)
- Snap front closure
- Rib knit collar, cuff and waistband
- Inside Tech pocket, right side
- SIZES: XS-6XL
- Quilt Lined or Nylon Sonic Lined**
- Uzip or standard option lining



#1000 JACKET SHOWN WITH TRIM #8

#1200

SCHOLASTIC AWARD JACKET

- Same as #1000 only with vinyl sleeves and pocket tabs
- Quilt Lined or Nylon Sonic Lined**
- Uzip or standard option lining

#1400

BRUIN AWARD JACKET

- Same as #1000 only with wool sleeves and pocket tabs
- Quilt Lined or Nylon Sonic Lined**
- Uzip or standard option lining

#1800

WOMEN'S AWARD JACKET

- Same as #1000 in a women's cut and snapped for women
- Quilt Lined or Nylon Sonic Lined**
- Uzip or standard option lining

#1100

RAGLAN AWARD JACKET

- 80% pure wool; 20% nylon body
- Steer hide leather double welt pocket tabs
- Steer hide leather raglan sleeves (4 pc)
- Snap front closure
- Rib knit collar, cuff waistband
- Inside Tech pocket, right side
- SIZES: XS-6XL
- Quilt Lined or Nylon Sonic Lined**
- Uzip or standard option lining



#1100 JACKET SHOWN WITH TRIM #16

#1300

SCHOLASTIC RAGLAN JACKET

- Same as #1100 only with vinyl sleeves and pocket tabs
- Quilt Lined or Nylon Sonic Lined**
- Uzip or standard option lining

#1500

HAWK AWARD JACKET

- Same as #1100 only with wool sleeves and pocket tabs
- Quilt Lined or Nylon Sonic Lined**
- Uzip or standard option lining

#1810

WOMEN'S RAGLAN AWARD JACKET

- Same as #1100 only in a women's cut and snapped for women
- Quilt Lined or Nylon Sonic Lined**
- Uzip or standard option lining

#1750

WOMEN'S AWARD JACKET

- Tapered pattern
- 80% pure wool; 20% nylon body
- Steer hide leather set-in sleeves (3 pc)
- Steer hide leather double welt pocket tab
- Snap front closure
- Rib knit collar, cuff and waistband
- Inside Tech pocket, right side
- SIZES: XS-3XL
- Quilt lined or Nylon Sonic Lined**
- Uzip or standard option lining



#1750 JACKET SHOWN WITH TRIM #10

#1755

WOMEN'S BRUIN AWARD JACKET

- Same as #1750 only wool sleeves (2 pc) and pocket tabs
- Quilt Lined or Nylon Sonic Lined**
- Uzip or standard option lining

#1760

WOMEN'S SCHOLASTIC AWARD JACKET

- Same as #1750 only vinyl sleeves (3 pc) and pocket tabs
- Quilt Lined or Nylon Sonic Lined**
- Uzip or standard option lining

#1770

WOMEN'S RAGLAN AWARD JACKET

- Tapered pattern
- 80% pure wool; 20% nylon body
- Steer hide leather raglan sleeves (4pc)
- Steer hide leather double welt pocket tab
- Snap front closure
- Rib knit collar, cuff and waistband
- Inside Tech pocket, right side
- SIZES: XS-3XL
- Quilt Lined or Nylon Sonic Lined**
- Uzip or standard option lining



#1770 JACKET SHOWN
TRIM #7 ON COLLAR AND CUFFS, TRIM #2 ON WAISTBAND

#1775

WOMEN'S HAWK AWARD JACKET

- Same as #1770 only wool sleeves (2pc) and pocket tabs
- Quilt Lined or Nylon Sonic Lined**
- Uzip or standard option lining

#1780

WOMEN'S SCHOLASTIC AWARD JACKET

- Same as #1770 only vinyl sleeves (4pc) and pocket tabs
- Quilt Lined or Nylon Sonic Lined**
- Uzip or standard option lining

#1700

WOMEN'S AWARD JACKET

- 80% Pure wool; 20% nylon body and sleeves
- Wool set-in sleeves 2pc
- Wool double welt pocket tabs
- Snap front closure
- Rib knit cuff and waistband
- Round neck sailor collar
- Inside Tech pocket, right side
- SIZES: XS-3XL
- Quilt Lined or Nylon Sonic Lined**
- Uzip or standard option lining

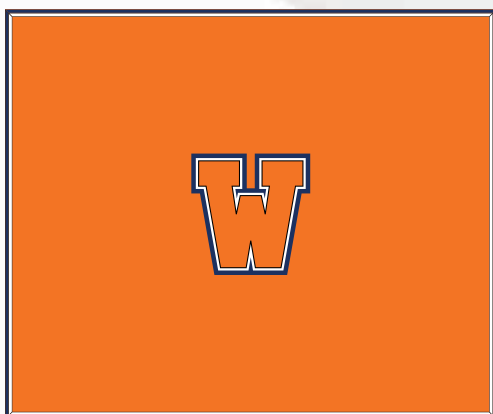
#1710

WOMEN'S RAGLAN AWARD JACKET

- Same as #1700 with raglan sleeves and round neck
- Quilt Lined or Nylon Sonic Lined**
- Uzip or standard option lining



#1700 JACKET SHOWN WITH TRIM #7



#1881

AWARD BLANKET

- 80% pure wool; 20% nylon body
- 60" x 72" in size (custom sizes for additional charge)
- 1" Felt border
- Shipped separately in vinyl zippered bag
- Multiple Chenille lettering options*



BYRON COLLAR -
ALL WOOL
WOOL/LEATHER COMBINATION
ALL LEATHER



KNIT STAND UP



2X2 RIB KNIT FOLD OVER



MENDOTA



2 color

BUTTERFLY ZIPPERED HOOD



SAILOR



PILOT

FABRIC COLORS

PEBBLE LEATHER

P01-MAROON	
P02-CARDINAL	
P03-SCARLET	
P05-VEGAS GOLD	
P07- OLD GOLD	
P08-GOLD	
P09-NAVY	
P10-ROYAL	
P11-SPRINGS BLUE	
P12-KELLY	
P13-PURPLE	
P14K-WHITE	
P140W-OPTIC	
P15-BLACK	
P17- OXFORD GREY	
P22-LIGHT GREY	
P26-ORANGE	
P27-RIPON GREY	
P28-DARK GREEN	
P35-ACADEMY BLUE	
P36-DARK ROYAL	
P44- KHAKI	
P50-BONE	
P51-BUCKTAN	
P52-CREME	
P53-NATURAL	
P54-PALOMINO	
P55-BUFF	
P56-WILLOW	
P90-SPEED BLUE	
P91-CREAM II	

SMOOTH LEATHER

0001-MAROON	
0008-GOLD	
0009-NAVY	
0010-ROYAL	
0011-LIGHT BLUE	
0012-KELLY	
0013-PURPLE	
0014-WHITE	
0015-BLACK	
0023-BROWN	
0026-ORANGE	
0027-RIPON GREY	
0028-DARK GREEN	
0038-LIGHT NAVY	
0050-BONE	
0051-BUCKTAN	
0052-CREME	
0053-NATURAL	
0054-PALOMINO	
0055-BUFF	

WOOL

01-MAROON	
02-CARDINAL	
03-SCARLET	
05-VEGAS GOLD	
07-OLD GOLD	
08-GOLD	
09-NAVY	
10-ROYAL	
11A-SPRINGS BLUE	
12-KELLY GREEN	
13-PURPLE	
14-WHITE	
15-BLACK	
17-OXFORD GREY	
23-BROWN	
26-ORANGE	
28-DARK GREEN	
29-AQUA	
30-DARK CARDINAL	
33-PACKER GREEN	
35-ACADEMY BLUE	
36-DARK ROYAL	
39-DARK NAVY	
60-BRIGHT ROYAL	
61-BRIGHT SCARLET	
63-BRIGHT PURPLE	
64-CRANBERRY	
65-RETRO KELLY	
86-ROYAL (KNICKS)	
88-VICTORY RED	
90-SPEED BLUE	
121-COLUMBIA BLUE	

VINYL

101-MAROON	
103-SCARLET	
109-NAVY	
1P111- COLUMBIA BLUE PEBBLE	
112-KELLY GREEN	
113-PURPLE	
114-WHITE	
1P14-WHITE PEBBLE	
115-BLACK	
1P15-BLACK PEBBLE	
126-ORANGE	
127-RIPON GREY	
128-DARK GREEN	
1P28- DARK GREEN PEBBLE	
155-BUFF	

STORM TECH

01-MAROON	
04-BRICK RED	
05-VEGAS GOLD	
08-GOLD	
09-NAVY	
10-ROYAL	
12-KELLY GREEN	
13-PURPLE	
14-WHITE	
15-BLACK	
23-BROWN	
26-ORANGE	
28-DARK GREEN	
34-CHARCOAL GREY	
37-SRED	

QUILTED

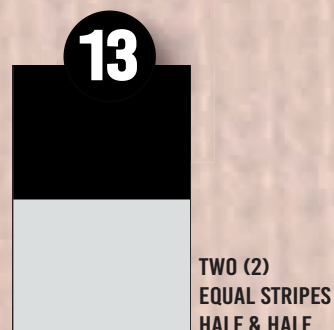
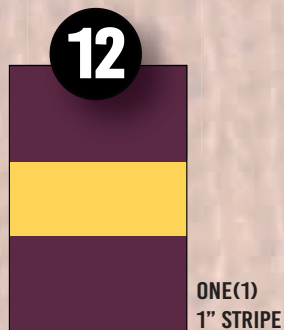
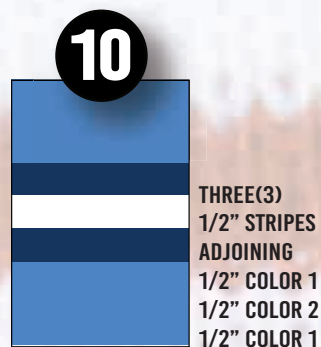
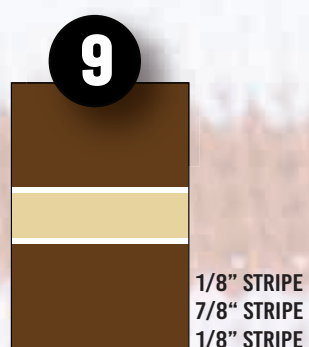
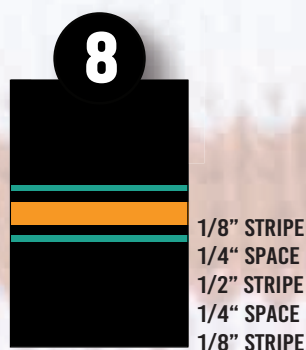
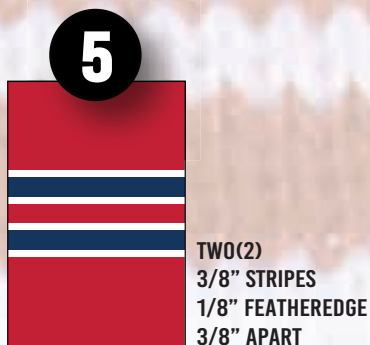
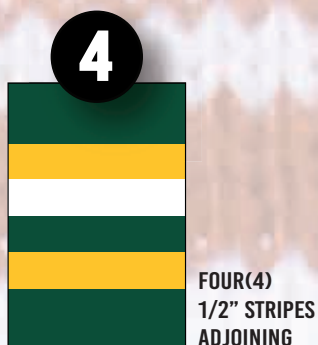
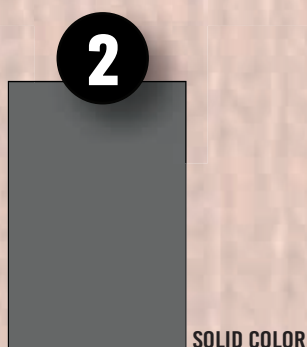
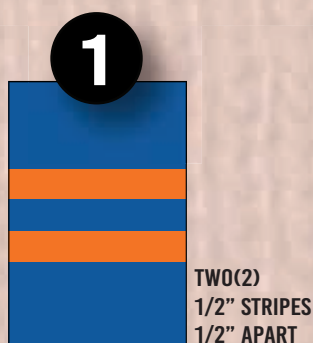


SONIC NYLON

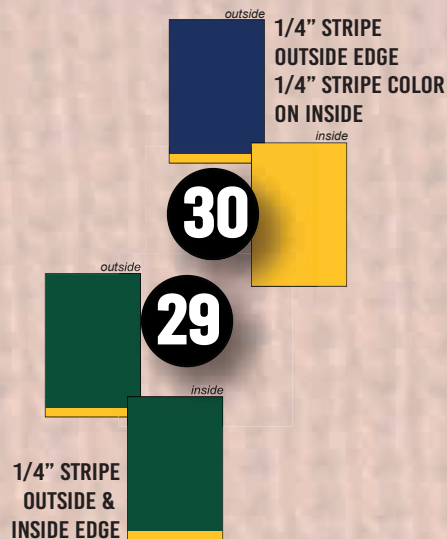
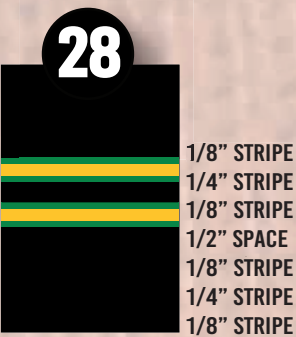
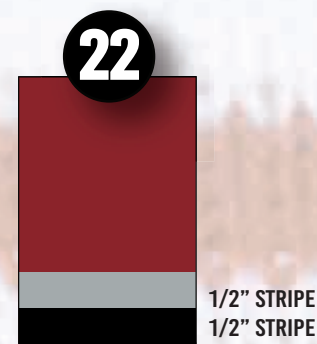
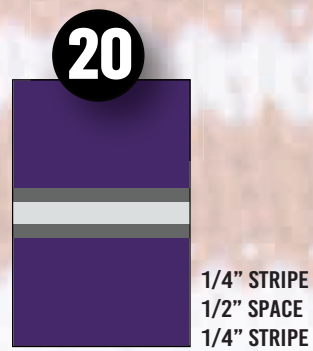
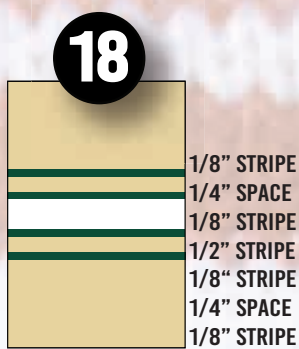
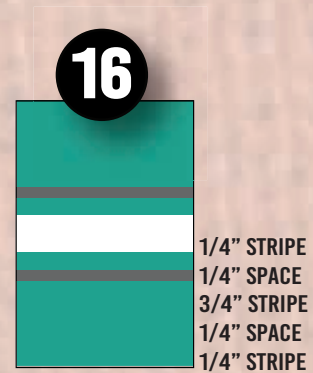
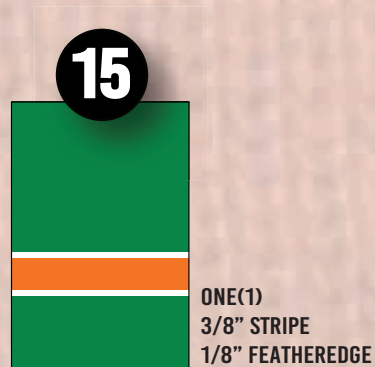
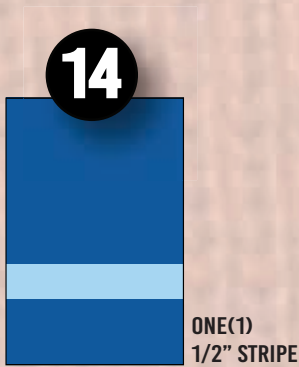


- U-zip lining allows for decorations to be added
- Optional Tech pocket on all jackets
- Quilted or Sonic Nylon

RIPON JACKET IS PROUD OF OUR CUSTOM ABILITY TO KNIT TRIMS FOR EACH CUSTOMER'S JACKET. OUR SPECIAL BLEND OF STRETCH AND SPUN YARNS PRODUCES A COMFORTABLE, MATCHING, AND DURABLE SET OF NECK, CUFFS, AND WAISTBAND FOR YOUR JACKET.



IN ADDITION TO ABOVE PATTERNS, RIPON JACKET WILL KNIT TRIM TO CUSTOMER SPECIFICATIONS. CONTACT CUSTOMER SERVICE FOR MORE INFORMATION.



SHOULDER OPTIONS

SHOULDER INSERTS



1 SINGLE LEATHER HALF CRESCENT



2 DOUBLE LEATHER HALF CRESCENT



3 TRIPLE LEATHER HALF CRESCENT

*Specify trim patterns for
Knit Vertical Stripes when ordering.*



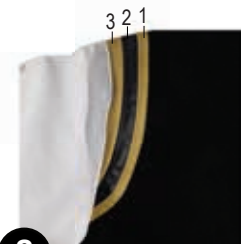
8 KNIT VERTICAL STRIPES



4 SINGLE LEATHER FULL CRESCENT



5 DOUBLE LEATHER FULL CRESCENT



6 TRIPLE LEATHER FULL CRESCENT



9 KNIT HORIZONTAL STRIPES



10 SINGLE LEATHER



11 DOUBLE LEATHER

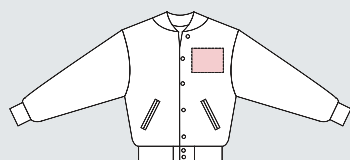


12 TRIPLE LEATHER

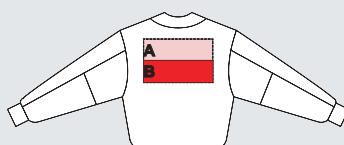


11SC DOUBLE LEATHER
SINGLE CORDEDGE



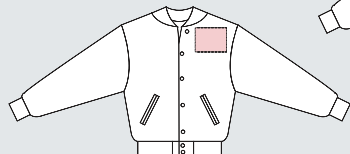


1 LEFT CHEST

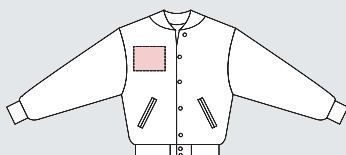


3A UPPER BACK

3B UPPER BACK



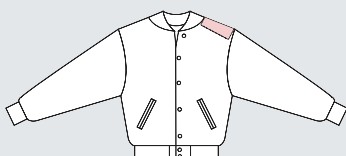
7 UPPER LEFT CHEST



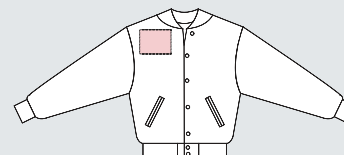
2 RIGHT CHEST



9L LEFT SLEEVE



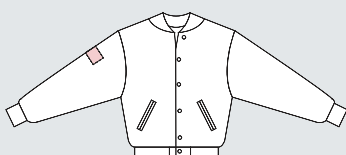
7SH LEFT SHOULDER



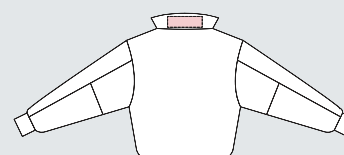
8 UPPER RIGHT CHEST



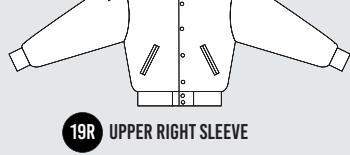
19R UPPER RIGHT SLEEVE



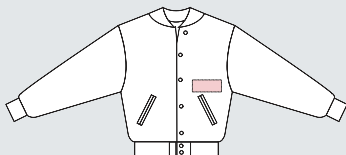
9R RIGHT SLEEVE



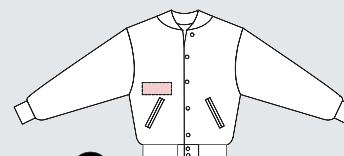
10 CENTER UNDER COLLAR



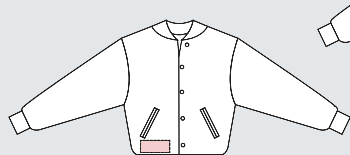
19L UPPER LEFT SLEEVE



20 ABOVE LEFT POCKET



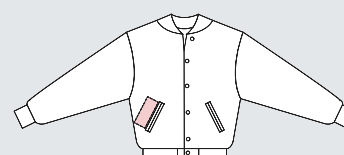
21 ABOVE RIGHT POCKET



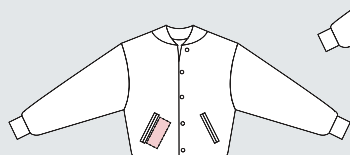
23 BELOW RIGHT POCKET



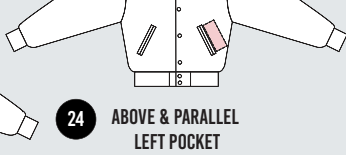
24 ABOVE & PARALLEL LEFT POCKET



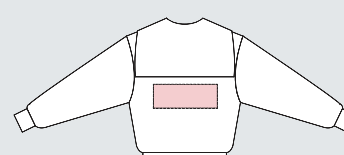
25 ABOVE & PARALLEL RIGHT POCKET



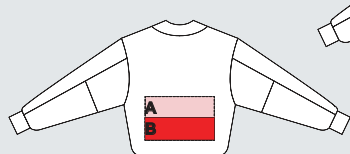
27 BELOW & PARALLEL RIGHT POCKET



26 BELOW & PARALLEL LEFT POCKET



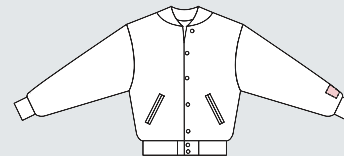
35 BELOW BACK HOOD



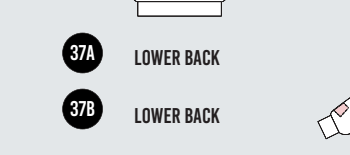
37A LOWER BACK



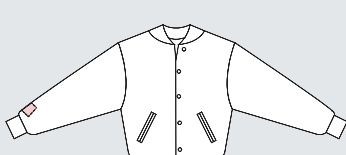
34 BELOW BACK COLLAR



38L LEFT SLEEVE END



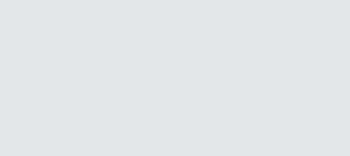
37B LOWER BACK



38R RIGHT SLEEVE END



40 SPLIT UPPER FRONT



36 HOOD

CHENILLE



LIGHT BLUE



ROYAL



NAVY



KELLY



DARK GREEN



PURPLE



OLD GOLD



BURNT ORANGE



GOLD



VEGAS GOLD



MAROON



CARDINAL



RIPON GREY



GRANITE GREY



BLACK



BROWN



WHITE



SCARLET

•CUSTOM AND STOCK CHENILLE DESIGNS AVAILABLE.

•CALL CUSTOMER SERVICE FOR QUOTES ON COMBINING CHENILLE AND EMBROIDERY IN LETTERS, MASCOTS AND SPORT NAMES.



CHENILLE FONTS

CHENILLE FULL BLOCK

A B C D E F G H I J K L M N O P Q R S T U V W X Y Z

CHENILLE PLAIN BLOCK - ONE COLOR

A B C D E F G H I J K L M N O P Q R S T U V W X Y Z

CHENILLE PLAIN BLOCK - TWO COLOR

A B C D E F G H I J K L M N O P Q R S T U V W X Y Z

CHENILLE LEGACY BLOCK

A B C D E F G H I J K L M N O P Q R S T U V W X Y Z

CHENILLE SCRIPT

A B C D E F G H I J K L M N O P Q R S T U V W X Y Z
a b c d e f g h i j k l m n o p q r s t u v w x y z

DECORATION

CUSTOM CHENILLE ART



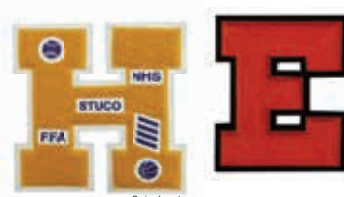
CHENILLE SCRIPT ON FRONT
•Height 1.25"



CHENILLE TAIL WITH NAME
•Chenille tail only



SCHOOL MASCOT, SPORT NAME
•2 color add 10%
•3"x2"



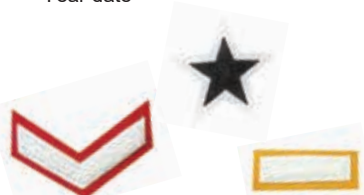
CHENILLE LETTERS
•2"-14"



STAIR STEP STUDENT NAME
•Front (Size based on length of name)
•Year date



YEAR DATE
•2", 3" Full year date
•2", 3" Year date
•Stair step year date



CHEVRON, STAR, BAR



EMBLEMS
•2" - 8"



EMBROIDERY



EMBROIDERY FONTS

BRUSH SCRIPT

A B C D E F G H I J K L M N O P Q R S T U V W X Y Z
 a b c d e f g h i j k l m n o p q r s t u v w x y z
 0 1 2 3 4 5 6 7 8 9

SCRIPT

A B C D E F G H I J K L M N O P Q R S T U V W X Y Z
 a b c d e f g h i j k l m n o p q r s t u v w x y z

TRADITION SCRIPT

A B C D E F G H I J K L M N O P Q R S T U V W X Y Z
 a b c d e f g h i j k l m n o p q r s t u v w x y z

FULL BLOCK 2

A B C D E F G H I J K L M N O P Q R S T U V W X Y Z
 1 2 3 4 5 6 7 8 9 0

MASCOT & SPORTS LOGOS - MULTICOLOR

- 1" - 8"
- Stock design library
- Custom designs available



EMBROIDERED SCRIPT OR BLOCK LETTERS/NUMBERS



Cheerleading

TACKLE TWILL AND IMPRINT FONTS

FANCY BLOCK

A B C D E F G H I J K L M N O P Q R S T U V W X Y Z
0 1 2 3 4 5 6 7 8 9

PRO BLOCK

A B C D E F G H I J K L M N O P Q R S T U V W X Y Z
0 1 2 3 4 5 6 7 8 9

TITAN BLOCK

A B C D E F G H I J K L M N O P Q R S T U V W X Y Z
0 1 2 3 4 5 6 7 8 9

TEXAS BLOCK

A B C D E F G H I J K L M N O P Q R S T U V W X Y Z
0 1 2 3 4 5 6 7 8 9

PLAIN BLOCK

A B C D E F G H I J K L M N O P Q R S T U V W X Y Z
0 1 2 3 4 5 6 7 8 9

EAGLE BLOCK

A B C D E F G H I J K L M N O P Q R S T U V W X Y Z
0 1 2 3 4 5 6 7 8 9

FULL BLOCK

A B C D E F G H I J K L M N O P Q R S T U V W X Y Z
0 1 2 3 4 5 6 7 8 9

IMPRINT

VIKINGS

10

Padres

BULLDOGS

DECORATION

TACKLE TWILL

VARSIITY

MOUNT ST. MARY

TARHEELS

84



STOCK STORM SERIES

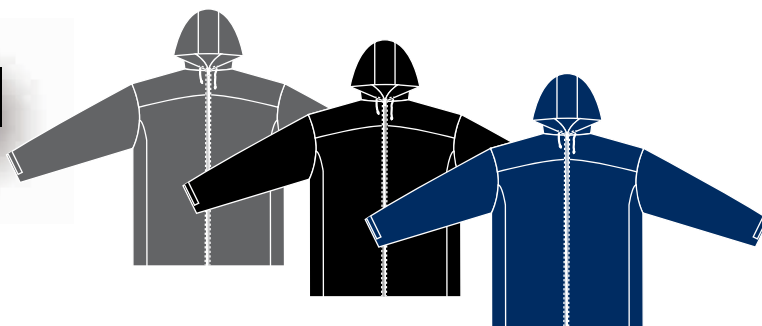
STORM SERIES

•Stocked in Navy, Black, and Charcoal Gray

#S3056

STORM SERIES 2 JACKET

- Three piece attached hood with sonic lining
- Two piece vented back
- 3/4" Velcro sleeve end closure
- Full zipper front thru mock collar
- FST pockets with side panels
- Minnet Mesh lining
- Open hemmed bottom, hip length
- Storm Seal seams
- Sizes S-3XL (oversize available)



STOCK LEFT CHEST EMBROIDERY



- Arch/Logo/Straight
- 1 color lettering
 - multicolor stock logo



- Pro Straight Design
- 1 color top line
 - 1 color second line
 - multicolor stock logo



- Name/Logo Arch
- 1 color
 - multicolor stock logo



STOCK COLORS

34-CHARCOAL GREY	
15-BLACK	
09-NAVY	



#S3955

STORM SERIES RAIN PANT

- 1" Covered elastic waist with drawstring
- Side opening for access to trouser pocket
- One patch pocket w/flap on left back
- Exposed zippered leg openings on out seam
- Open hemmed bottom (standard 32" inseam)
- Storm Seal seams
- Unlined
- Sizes S-3XL



CUSTOM STORM SERIES

#3056

STORM SERIES JACKET

- Three piece attached hood with sonic lining
- Two piece vented back
- 3/4" Velcro sleeve end closure
- Full zipper front thru mock collar
- FST pockets with side panels
- Minnet Mesh lining
- Open hemmed bottom, hip length
- Storm Seal seams
- Sizes S-3XL (oversize available)



Breathable



Waterproof

EMBROIDERY AND IMPRINT CUSTOM ART OPTIONS



STORM TECH

01-MAROON

04-BRICK RED

05-VEGAS GOLD

08-GOLD

09-NAVY

10-ROYAL

12-KELLY GREEN

13-PURPLE

14-WHITE

15-BLACK

23-BROWN

26-ORANGE

28-DARK GREEN

34-CHARCOAL GREY

37-SRED



#3955

STORM SERIES RAIN PANT

- 1" Covered elastic waist with drawstring
- Side opening for access to trouser pocket
- One patch pocket w/flap on left back
- Exposed zippered leg openings on out seam
- Open hemmed bottom (standard 32" inseam)
- Storm Seal seams
- Unlined
- Sizes S-3XL

STORM SEAL IS APPLIED OVER THE SEAMS ON THE INSIDE OF THE GARMENT TO PREVENT MOISTURE

STORM SERIES





#3501

MEN'S SOFT SHELL FIT JACKET

- Trim cut
- 2.5" Soft shell collar
- Exposed full zipper front
- Upper shoulder panel, front and back
- 4 Piece sleeve
- 2" Cuff
- Front body lining, #37 Minnet Mesh
- Straight front body inserts
- FST Pockets with exposed zipper closure
- Open hemmed bottom, hip length
- Self lined
- Sizes M-3XL



#3502

WOMEN'S SOFT SHELL FIT JACKET

- Women's tapered cut
- 2" Soft shell collar
- Exposed full zipper front
- Upper shoulder panel, front and back
- 4 Piece sleeve
- 3" Cuff
- Front body lining, #37 Minnet Mesh
- Curved front body inserts
- FST Pockets with exposed zipper closure
- Open hemmed bottom, hip length
- Self lined
- Sizes S -2XL



#3025

CASCADE JACKET

- Standard cut
- 4" Self material "Cascade" collar with concealed hood, Velcro fasteners, and drawstring
- Concealed full zipper front (through "Cascade" collar)
- Nylon Sonic hood lining
- Gassed vented back
- 2" Elastic 4-needle waistband
- "Cascade" sleeve cuffs, with 1½" elastic and velcro adjustable tab
- Inside tech pocket
- Single welt pockets
- Sizes XS-4XL
- Sonic, Quilt, Minnet, or Arctic lined

OPTIONS

- Replace "Cascade" collar with "Nevada" collar
- Omit vented back
- Storm flap w/snaps covering exposed zip front
- Storm flap w/velcro covering exposed zip front
- Two piece vented front

STORM TECH

Colors available for all nylon jackets

01-MAROON	
04-BRICK RED	
05-VEGAS GOLD	
08-GOLD	
09-NAVY	
10-ROYAL	
12-KELLY GREEN	
13-PURPLE	
14-WHITE	
15-BLACK	
23-BROWN	
26-ORANGE	
28-DARK GREEN	
34-CHARCOAL GREY	
37-SRED	



#3000

BASEBALL JACKET

- Standard cut
- Set in sleeves
- Full snap front
- Rib knit stand up collar, cuffs and waistband
- Inside tech pocket
- Single welt pocket tabs
- Sizes XS-4XL
- Sonic, Quilt, Minnet, or Arctic lined



#3030

RAGLAN BASEBALL JACKET

- Same as #3000 only with Raglan sleeves
- Sonic, Quilt, Minnet, or Arctic lined



#3012

VIRGINIA JACKET

- Standard Cut
- 3 ½" Self material "Nevada" collar
- Concealed full zipper front (through "Nevada" collar)
- 1" Elastic sleeve ends
- 2" Elastic 4-needle waistband
- Single welt pockets
- Two piece vented back
- Sizes XS-4XL
- Sonic, Quilt, Minnet, or Arctic lined

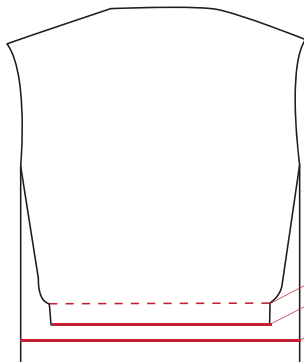
#3015

RAGLAN VIRGINIA JACKET

- Same as #3012 only with Raglan sleeves
- Sonic, Quilt, Minnet, or Arctic lined



BODY LENGTHS



- Belt Length (*before waistband is applied*)
- Waist Length (*with 2" or 3" waistband*)
- Hip Length (*2" Longer than waist*)
- Fingertip Length (*2" Longer than hip*)



#3011

NEVADA JACKET

- Standard cut
- 3 1/2" Self material "Nevada" collar
- Concealed full zipper front (*through "Nevada" collar*)
- 1" Elastic sleeve ends
- 2" Elastic 4 needle waistband
- Single welt pockets
- Sizes XS-4XL
- Sonic, Quilt, Minnet, or Arctic lined

#3014

RAGLAN NEVADA JACKET

- Same as #3011 only with Raglan sleeves
- Sonic, Quilt, Minnet, or Arctic lined



#3410

GIANTS SURCOAT

- Standard Cut
- Full length set in sleeves
- Rib knit cuffs
- Single welt pockets
- Self material hood with drawstring (4 pc)
- Fingertip length body, hemmed bottom
- Snap front
- Sizes XS-4XL
- Sonic, Quilt, Minnet, or Arctic lined



NYLON JACKETS



#3490

SWIM PARKA

- Standard Cut
- Set in sleeves
- Self material hood w/drawstring (2pc) with body lining
- Concealed full two way zipper front (32")
- 1" Elastic sleeve ends
- Single welt pockets
- Full length body (42")
- Hemmed bottom
- Size S-4XL
- Sonic, Quilt, Minnet, or Arctic lined



#3600-C

SIDELINER CAPE

- Full length body
- Self material hood (4 pc)
- Cut to fit over shoulder pads
- Two snap front closure
- Hemmed bottom
- Two large inside pockets
- Size L-3XL
- Unlined or lined Sonic, Quilt, Minnet, or Arctic



#3600-J

SIDELINER JACKET

- Set in sleeves
- Cut to fit over shoulder pads
- Snap front
- Rib knit cuffs and waistband
- Self material hood (4 pc)
- Large set in pockets, single welt
- Sizes L-3XL
- Unlined or lined Sonic, Quilt, Minnet, or Arctic lined
- Option for zipper front



Shown with trim #4



#3760

VIPER PULLOVER

- Standard cut
- Set in sleeves
- Exposed short zipper front (7")
- 2 ½" Lightweight rib knit collar, cuffs and waistband
- Two set in single welt pockets
- Sizes XS-4XL
- Sonic, Quilt, Minnet or Arctic lined



844.69.RIPON



FIND US ON



WWW.RIPONATHLETIC.COM



#3711

NEVADA PULLOVER

- Standard cut
- 3½" Self material "Nevada" collar
- Exposed short zipper front (*through collar*)
- 1" Elastic sleeve ends
- 2" Elastic 4 needle waistband
- Single welt pockets
- Sizes XS-4XL



All available in Sonic, Quilt, Minnet or Arctic lined.

#3711W

WOMEN'S NEVADA PULLOVER

- Same as #3711 only in a women's standard cut

#3714

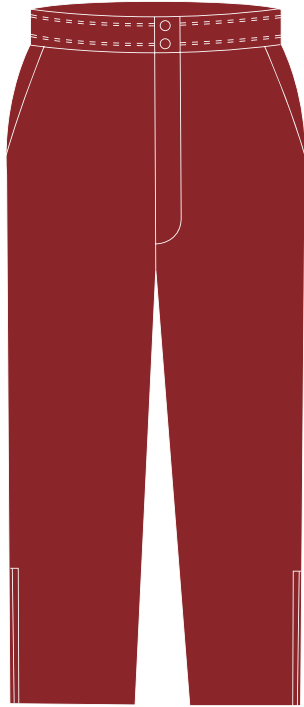
RAGLAN NEVADA PULLOVER

- Same as #3711 only with raglan sleeves

#3714W

WOMEN'S RAGLAN NEVADA PULLOVER

- Same as #3711 only in a women's standard cut with raglan sleeves



#3820

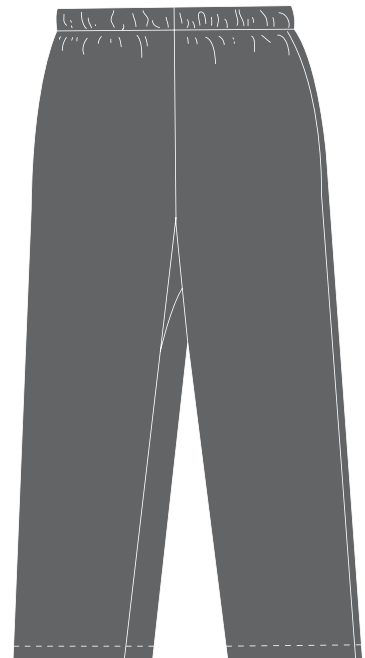
CASCADE PANT

- Full length, four panel pant
- Straight leg
- Exposed zipper in outseam leg ends
- Hemmed leg ends
- Zipper fly front
- Four needle waist with 2" elastic
- Two snaps in a waistband
- Two set in side pockets
- Unlined or lined Arctic, Quilt, Minnet Mesh, and Nylon Sonic
- Relay Lining available upper- Minnet Mesh lower- Sonic

#3800

MEN'S PREGAME PANT

- Full length, hemmed bottom
- Straight leg
- Fold over waist with 1" elastic drawstring
- Unlined
- Sizes XS-4XL





TERMS AND CONDITIONS FOR SALES

The merchandise in this catalog is available through authorized sporting goods dealers throughout the United States.

TERMS

Customers with established credit receive terms of Net 30 days, FOB factory. Discounts when available apply only when invoices are paid according to terms.

PRICES

All prices in the price list are subject to change without notice.

FREIGHT

All shipments are FOB, Berlin, WI. Freight is prepaid and added to the invoice. When not advised, shipments will be made via best way.

DELIVERY

Delivery is determined by booking status, which is two weeks for custom blank jackets with complete artwork, once a booking order is placed. Please call customer service or inquire on the RAJ website regarding booking programs and their delivery, term, and discount benefits.

MINIMUM ORDER POLICY

There are no minimum order service charges for booking dealers. See below schedule for non-booking dealers service charges. Call customer service for all special custom requests.

1 Unit	100% Service Charge
2 or 3 Units	50% Service Charge
4 or 5 Units	25% Service Charge

ORDER CHANGES AND CANCELLATIONS

Changes and cancellations of special orders cannot be accepted after the order has been cut. The order acknowledgment should be read promptly. If there are any changes, please advise immediately.

RETURNS

Returns for credit must have a letter enclosed advising the reason for return. Custom orders, once cut and/or shipped, are tailored and trimmed to the customer's exact specifications. Therefore, they are not returnable for credit unless they were not made to the customer's specifications.

COLORS

The best dyes and yarns are used for maximum color fastness. Different fibers, knit and woven constructions and even different dye lots of the same fabric absorb dyes differently. A perfect color match cannot be guaranteed. We inspect all incoming fabrics/yarns to ensure the best color match possible.

MADE IN THE U.S.A.

All Ripon Jacket products are made in Berlin, Wisconsin USA!



