

2024



PRO SERIES
FOOTBALL





Shown with
Sublimated
Sleeve Stripe
PSG12



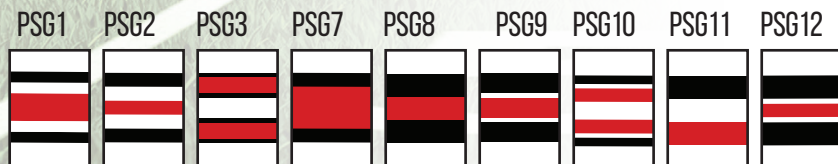
Style PTSS **Sublimated Sleeves**

- 4-Way Stretch Woven Body
- Contoured Compression Mesh Inserts
- Pro Wide Neck
- Fitted Sleeves
- Pro Elastic Cuffs
- Hemmed Elastic Bottom

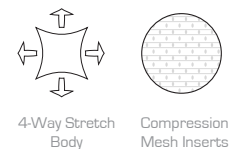
- Embroidered Team Name
- 1 or 2 Color Lightweight Sub Twill.
- 9" Front Sub Twill Number
- 10 " Back Sub Twill Number
- 3.5" Cowl or Sleeves Sub Twill Number

Shown with 1 Color Embroidered Team Logo and 3 Color Sub Twill Full Block Numbers.

Standard Sublimated Sleeves



- 1 Main Body
- 2 Sublimated Sleeves
- 3 Pro Neck
- 4 Pro Cuffs
- 5 Speedline Logo





Sewn on 1" Sleeves Overlays

PRO T W I L L
FOOTBALL



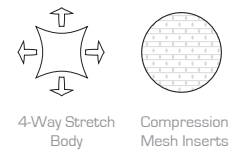
Style PTDT

- 4-Way Stretch Woven Body
- Contoured Compression Mesh Inserts
- Pro Wide Neck
- Fitted Sleeves
- Pro Elastic Cuffs
- Hemmed Elastic Bottom

Embroidered Team Name
1 or 2 Color Lightweight Sub Twill.
9" Front Sub Twill Number
10 " Back Sub Twill Number
3.5" Cowl or Sleeves Sub Twill Number

Shown with 1 Color Embroidered Team Logo and
1 Color Sub Twill Full Block Numbers.

- ① Main Body
- ② Sleeves
- ③ Sewn on 1" Sleeve Overlays
- ④ Pro Neck
- ⑤ Pro Cuffs
- ⑥ Speedline Logo



4-Way Stretch Body Compression Mesh Inserts





Sewn in Cowl Inserts with overlay

PRO T W I L L
FOOTBALL



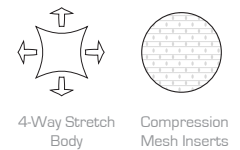
Style PTYI

- 4-Way Stretch Woven Body
- Contoured Compression Mesh Inserts
- Pro Wide Neck
- Fitted Sleeves
- Pro Elastic Cuffs
- Hemmed Elastic Bottom

Embroidered Team Name
1 or 2 Color Lightweight Sub Twill.
9" Front Sub Twill Number
10 " Back Sub Twill Number
3.5" Cowl or Sleeves Sub Twill Number

Shown with 1 Color Embroidered
Full Block Team Name and
2 Color Sub Twill Michigan Numbers.

- ① Main Body
- ② Sleeves
- ③ Sewn on Cowl Inserts (Black/Dk. Green/Black)
- ④ Pro Neck
- ⑤ Pro Cuffs
- ⑥ Speedline Logo



4-Way Stretch Body Compression Mesh Inserts





Style PTCS

- 4-Way Stretch Woven Body
- Contoured Compression Mesh Inserts
- Pro Wide Neck
- Fitted Sleeves
- Pro Elastic Cuffs
- Hemmed Elastic Bottom

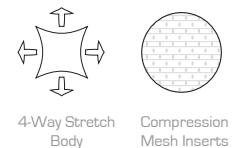
Embroidered Team Name
1 or 2 Color Lightweight Sub Twill.
9" Front Sub Twill Number
10 " Back Sub Twill Number
3.5" Cowl or Sleeves Sub Twill Number

Shown with 1 Color Embroidered
Full Block Team Name and
2 Color Sub Twill Edge Numbers.
Sub Twill Sleeve Appliqué.

- ① Main Body
- ② Sleeves
- ③ Pro Neck
- ④ Pro Cuffs
- ⑤ Speedline Logo



Sub Twill Appliqué



4-Way Stretch Body Compression Mesh Inserts

PRO T W I L L
FOOTBALL



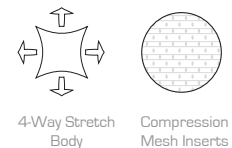
Style PTMS

- 4-Way Stretch Woven Body
- Contoured Compression Mesh Inserts
- Pro Wide Neck
- Fitted Sleeves
- Pro Elastic Cuffs
- Hemmed Elastic Bottom

Embroidered Team Name
1 or 2 Color Lightweight Sub Twill.
9" Front Sub Twill Number
10 " Back Sub Twill Number
3.5" Cowl or Sleeves Sub Twill Number

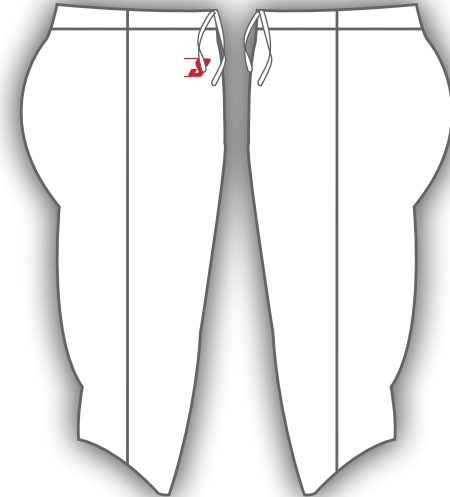
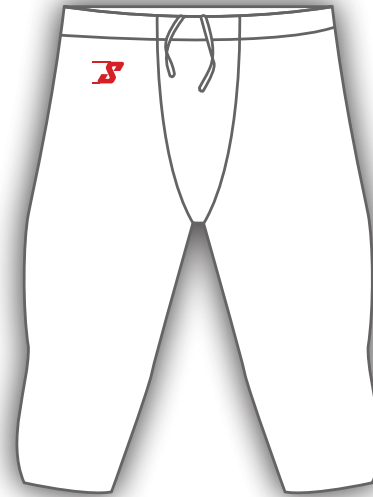
Shown with 1 Color Embroidered
Full Block Team Name and
2 Color Sub Twill Union Numbers.

- ① Main Body
- ② Sleeves
- ③ Pro Neck
- ④ Pro Cuffs
- ⑤ Speedline Logo



4-Way Stretch Body Compression Mesh Inserts

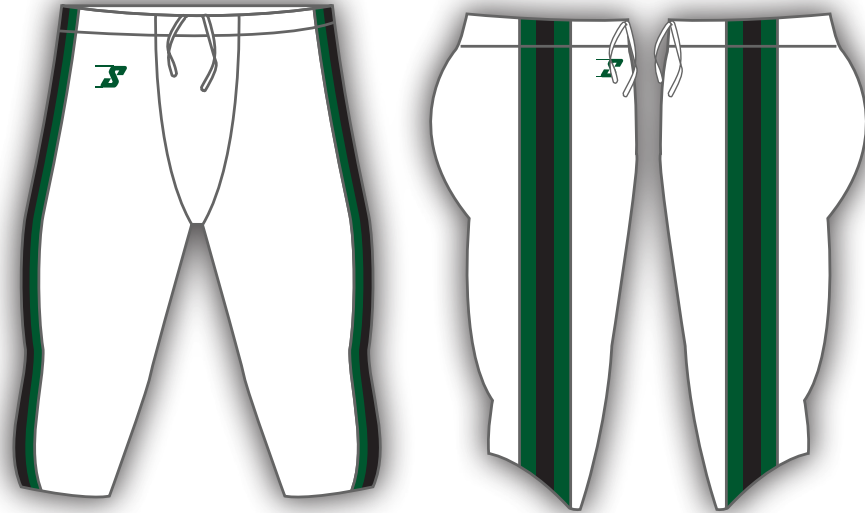




Style DCP **Color Pant** **Style DWP** **White Pant**

- 88% Nylon/ 12% spandex.
- Sublimated Side Inserts
- Drawcord Wasit

- ① Main Body
- ② Speedline Logo

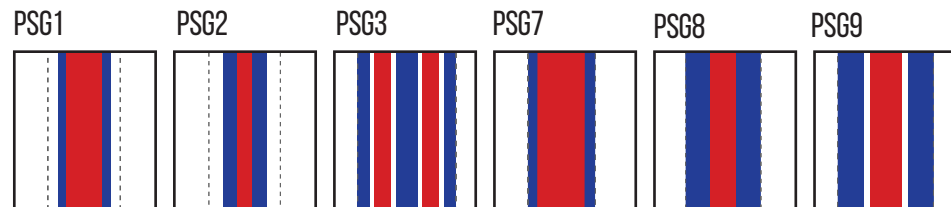


Style DCSI Color Pant | **Style DWSI White Pant**

- 88% Nylon/ 12% spandex. Shown with Sublimated Pant Graphic PSG8
- Sublimated Side Inserts
- Drawcord Wasit

- 1 Main Body
- 2 Sublimated Side Inserts (WH/BLK/WH)
- 3 Speedline Logo

Standard Sublimated Pant Insert Graphics



Standard Numbers and Lettering

Blade 1234567890

Cadence 1234567890

Cadet 1234567890

Cisco 1234567890

Derby 1234567890

Edge 1234567890

Full Block 1234567890

Lacey 1234567890

Metro 1234567890

Michigan 1234567890

Pro Pak 1234567890

Russo 1234567890

Speed 1234567890

Steel 1234567890

Union 1234567890

Aachen Bold **ABCDEFGHIJKLMNOPQRSTUVWXYZ**

Augusta ABCDEFGHIJKLMNOPQRSTUVWXYZ

Arizona **ABCDEFGHIJKLMNOPQRSTUVWXYZ**

Cadence **ABCDEFGHIJKLMNOPQRSTUVWXYZ**

Cisco ABCDEFGHIJKLMNOPQRSTUVWXYZ

Criilee **ABCDEFGHIJKLMNOPQRSTUVWXYZ**

Edge **ABCDEFGHIJKLMNOPQRSTUVWXYZ**

Full Block **ABCDEFGHIJKLMNOPQRSTUVWXYZ**

Gator ABCDEFGHIJKLMNOPQRSTUVWXYZ

Illinois Block **ABCDEFGHIJKLMNOPQRSTUVWXYZ**

Jax ABCDEFGHIJKLMNOPQRSTUVWXYZ

Metal **ABCDEFGHIJKLMNOPQRSTUVWXYZ**

Metro ABCDEFGHIJKLMNOPQRSTUVWXYZ

Michigan **ABCDEFGHIJKLMNOPQRSTUVWXYZ**

Plain Block **ABCDEFGHIJKLMNOPQRSTUVWXYZ**

Russo **ABCDEFGHIJKLMNOPQRSTUVWXYZ**

Serpentine **ABCDEFGHIJKLMNOPQRSTUVWXYZ**

Steel **ABCDEFGHIJKLMNOPQRSTUVWXYZ**

Times ABCDEFGHIJKLMNOPQRSTUVWXYZ

Union **ABCDEFGHIJKLMNOPQRSTUVWXYZ**

Wallace **ABCDEFGHIJKLMNOPQRSTUVWXYZ**



1804 N. Habana Ave.
Tampa, Florida 33607

P.O. Box 4150
Tampa, FL 33677
Phone: (813) 876-1375
Fax: (813) 873-8714
www.speedlineathletic.com