

FALL-SPRING



24


SUN MOUNTAIN®

TABLE OF CONTENTS

GOLF BAGS & CARTS

CATALOG 2023/2024

MEN'S BAGS



06

WOMEN'S BAGS



30

SONNENALP BAGS



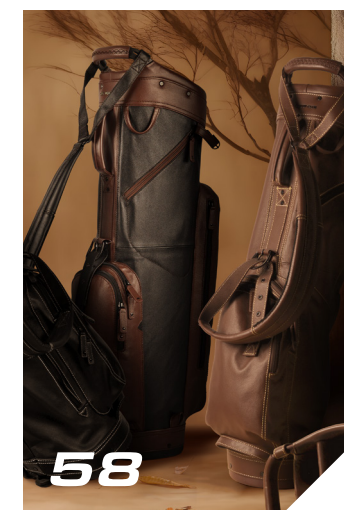
38

WATERPROOF BAGS



54

LEATHER BAGS



58

TRAVEL BAGS



62

PUSH CARTS



68

ACCESSORIES



74

Researched and engineered by industry-leading designers who also love golf, Sun Mountain bags, carts, travel covers and outerwear are built with state-of-the-art materials for maximum functionality and long-term durability. We're proud to bring our passion on the course to improve the game for our customers—time and time again.

WHY BUY?



**DESIGNED BY GOLFERS,
FOR GOLFERS**

At Sun Mountain we have a nearly 40 year history of introducing innovative golf equipment that is as refined in design as it is golf-minded in function. No detail is too large or too small. Our meticulous design and love for the game come together to deliver the best functionality possible. We design every bag to fit your style whether you prefer to walk the course or ride in a cart.



**DON'T LET RAIN
STOP YOU**

H2NO bags make it possible to play in the rain and not skip a beat. Drawing on our experience manufacturing rainwear, we seal all the seams; use textiles that have a waterproof treatment on both sides; and employ high quality, water-resistant zippers.

DISCOVER P.54



**SUSTAINABLE
& RESPONSIBLE**

We believe we have a responsibility to protect and give back to the planet. That's why we joined up with 1% for the Planet, a global network of businesses, individuals, and environmental organizations tackling our planet's biggest environmental issues.



DISCOVER P.06



**A MODERN
CLASSIC**

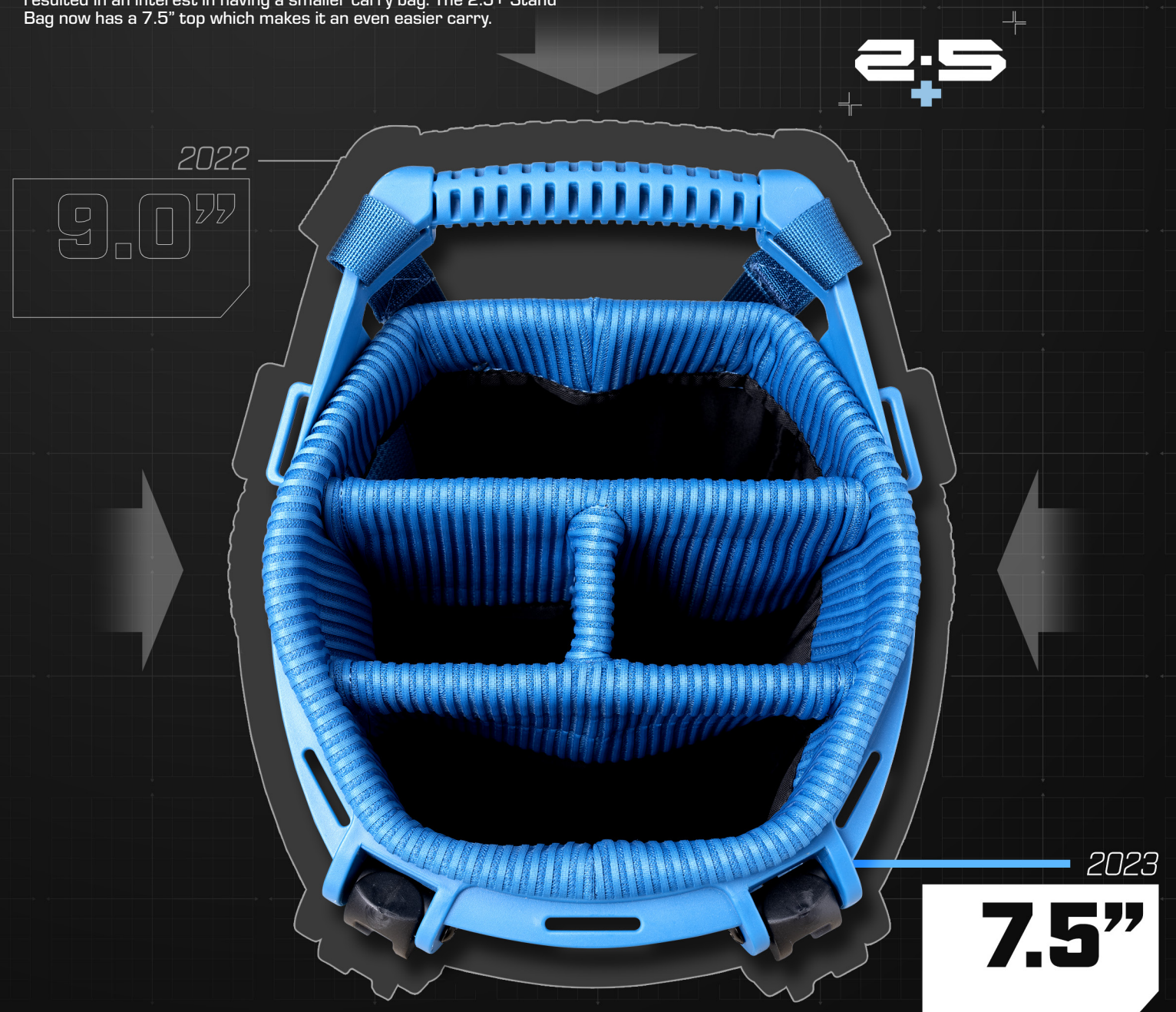
The Mid-Stripe Collection combines the tradition of vinyl with the features for which Sun Mountain is known: intuitive pocket placement, full-length dividers, velour-lined specialty pockets, and comfortable straps."

DISCOVER P.38

INNOVATION

**EVEN SMALLER
IN 2023**

It's no secret golf has had a resurgence in the last few years. More people are working from home and able to set their own schedule. Getting in a quick nine or time on the range is more doable. This resulted in an interest in having a smaller carry bag. The 2.5+ Stand Bag now has a 7.5" top which makes it an even easier carry.



**LIGHT
SERIES COLLECTION**

DISCOVER P.10

ECO-LITE CART



ECO-LITE STAND



The Repreve fabric used in the Eco-Lite is made using recycled plastic bottles. Approximately twenty 20-oz bottles go into the material used in each bag.

MADE WITH 20x 



ECO-LITE COLLECTION

Our sustainable Eco-Lite bags are made with Repreve® fabric, a leading branded performance fiber made from recycled plastic. Approximately twenty-five 20-oz bottles go into the material used in each Eco-Lite cart bag. Approximately twenty 20-oz bottles go into the material used in each Eco-Lite stand bag.

SPECIALTY



**THE ECO-LITE
STAND BAG**



FEATURES

8.5" / 4-WAY TOP | 6 POCKETS | E-Z LITE DUAL STRAP
ULTRALIGHT | QUICK-ACCESS RANGE FINDER POCKET
CARRY-ASSIST GRAB LOOPS | EASY ON AND OFF



▲ GREEN-RUSH GREEN ▲ HARBOR-SPRUCE-OCBRE ▲ SURF-RIVER ▲ BLACK



▲ PLUM-VIOLET-EMBER ▲ MIDNIGHT-STONE

? ABOUT

ECO-RESPONSIBILITY

We believe we have a responsibility to protect and give back to the planet. That's why we partnered with 1% for the Planet, a global network of businesses, individuals, and environmental organizations tackling our planet's biggest environmental issues. We donate a percentage of Eco-Lite sales to Montana Rivers, Inc., an organization dedicated to conserving and protecting rivers through outreach, restoration, and advocacy.

Glacial runoff waters from Glacier National Park in Montana flow into the Pacific Ocean, the Atlantic Ocean and the Gulf of Mexico.



SPECIALTY



**THE ECO-LITE
CART BAG**



FEATURES

9.0" / 14-WAY TOP | 10 POCKETS | SINGLE STRAP SYSTEM
14 FULL-LENGTH DIVIDERS | 2 VELOUR-LINED VALUABLES POCKETS
MAGNETIC RANGE FINDER POCKET | CART STRAP PASS-THROUGH



▲ PLUM-VIOLET-EMBER ▲ SURF-RIVER ▲ HARBOR-SPRUCE-OCBRE ▲ GREEN-RUSH GREEN ▲ BLACK ▲ MIDNIGHT-STONE

? ABOUT



#WECARE

The Repreve fabric used in each Eco-Lite Bag is made from twenty to twenty-five 20-oz bottles. Repreve fabric is the leading, most-trusted, performance fiber made from recycled materials.





2.5+

2.5+, 3.5LS & 4.5LS

Designed for the avid walking golfer, the 2.5+, 3.5LS, and 4.5 14-Way redefine the features that can be offered in lightweight carry bags.



3.5LS



4.5 14-WAY

LIGHTER TOP & MATERIALS

When designing our lightweight stand bags, Sun Mountain uses the lightest weight plastic we can that meets our stringent strength testing requirements. Likewise, we identify lighter weight fabrics that meet our tensile and abrasion testing standards.



CARBON FIBER LEGS

Carbon fiber is known to have high tensile strength and be lighter weight than many more conventional materials, which is why Sun Mountain chooses to use carbon fiber legs on our 2.5+ and 3.5LS Stand Bags.



LIGHT SERIES COLLECTION

Sun Mountain's core line of stand bags offers golfers the option to choose a lightweight stand bag that meets their requirements. The 2.5+ is our lightest weight bag, has a smaller top, and a variety of pockets. The 3.5LS has a slightly larger top and more pockets so the golfer can carry a bit more gear. If a 14-Way top is a must, the 4.5LS 14-way has the individual, full-length dividers they are seeking.



THE 2.5+ STAND BAG



FEATURES

7.5" / 4-WAY TOP | 6 POCKETS | X-STRAP DUAL STRAP
ULTRALIGHT | FOUR FULL-LENGTH DIVIDERS
CARRY-ASSIST GRAB LOOPS | EASY ON AND OFF



▲ NAVY-WHITE-RED ▲ SURF-RIVER ▲ HARBOR-SPRUCE-OCBRE ▲ PORT-RUSH RED



▲ BLACK-STEEL-RUSH RED ▲ CADET-WHITE ▲ PATRIOT ▲ BLACK ▲ NAVY

NON-STOCK SINGLE STRAP VERSION AVAILABLE



The 2.5 Single Strap bag is designed for those who love the simplicity of a single strap or have a caddy. Under three pounds, the 2.5+ offers features that have become essential: a water bottle pouch, a velour-lined valuables pocket and full-length dividers.

• PATRIOT • BLACK (LEFT-HANDED VERSION ALSO AVAILABLE) • NAVY



THE 3.5LS STAND BAG



FEATURES

8.5" / 4-WAY TOP | 8 POCKETS | E-Z LITE DUAL STRAP
ULTRALIGHT | DURABLE, ULTRALIGHT CARBON FIBER LEGS
CARRY-ASSIST GRAB LOOPS | EASY ON AND OFF



▲ RED-BLACK-STEEL ▲ NAVY-WHITE-RED ▲ SPRUCE-HARBOR-OCBRE ▲ RIVER-NAVY



▲ WHITE-BLACK ▲ WHITE-TROPIC ▲ PATRIOT ▲ BLACK (LEFT-HANDED VERSION AVAILABLE) ▲ NAVY

NON-STOCK SINGLE STRAP VERSION AVAILABLE



The 3.5LS Single Strap Bag is a great choice if you use a caddy or prefer the simplicity of a single-shouldered bag.

• PATRIOT • BLACK (LEFT-HANDED VERSION ALSO AVAILABLE) • NAVY





THE 4.5LS 14-WAY STAND BAG



FEATURES

8.75"x10.25" / 14-WAY TOP | 8 POCKETS | E-Z LITE DUAL STRAP
EASY ON AND OFF | CARRY-ASSIST GRAB LOOPS | CART FRIENDLY
RANGE FINDER POCKET W/ MAGNETIC CLOSURE



▲ NAVY-RIVER ▲ WHITE-BLACK ▲ SPRUCE-HARBOR-OCBRE ▲ NAVY-WHITE-RED

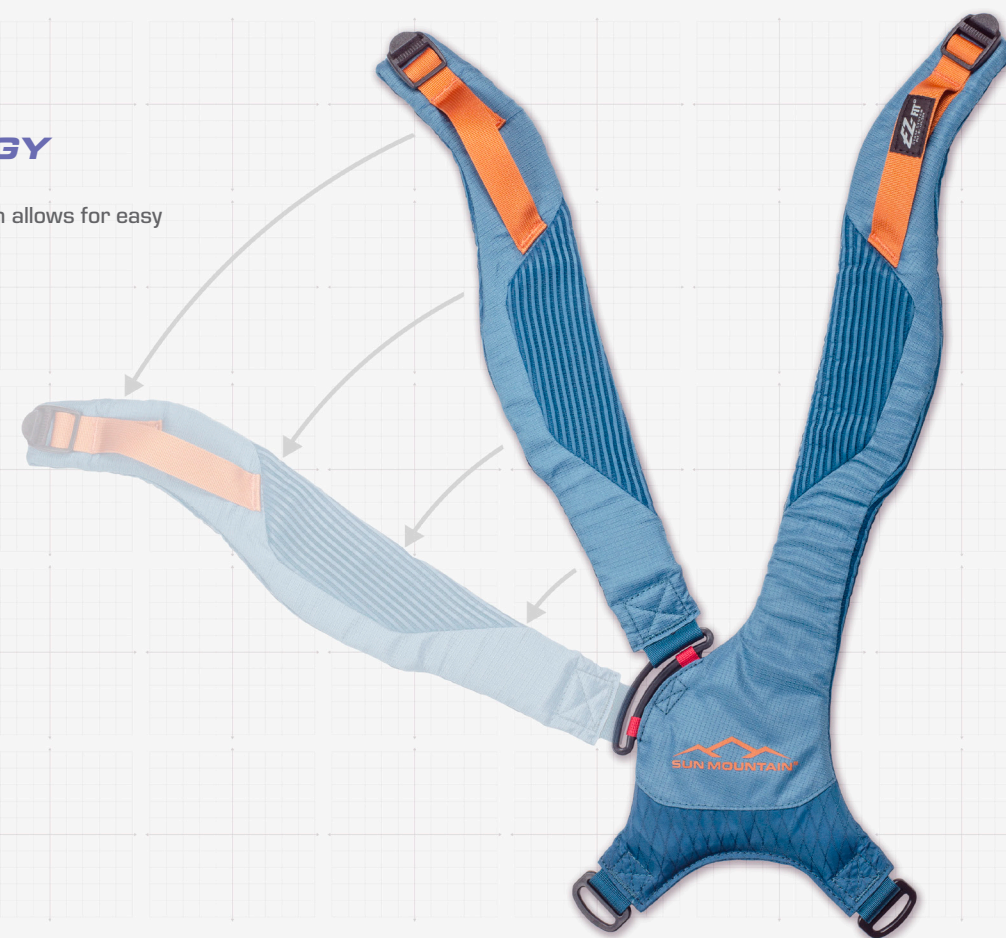


▲ NAVY VECTOR-NAVY ▲ BLACK ▲ BLACK-STEEL-RUSH RED ▲ PORT-RUSH RED ▲ PATRIOT

? ABOUT

E-Z LITE TECHNOLOGY

The E-Z Lite Strap System allows for easy on and off.



GO FURTHER >>>
IN THE SUN MOUNTAIN EXPERIENCE

PERFORM BETTER WITH WEIGHTLESS OUTERWEAR

Lightweight, high-performance outerwear helps you play better, longer. See our full line of outerwear in the new Fall 2023/Spring 2024 catalog.



SUMMIT LONG-SLEEVE

OUTERWEAR CATALOG



GRANITE VEST

OUTERWEAR CATALOG

CUSTOM

BASE MODEL

1

- ▶ TEAM STAND
- ▶ TEAM H2NO
- ▶ TEAM SUPERLITE



TOP COLOR

3

< YELLOW >



BODY COLOR

2



CUSTOM METHOD

4

- ▶ HEAT TRANSFER
- ▶ EMBROIDERY



CUSTOM

MATCH ALL YOUR GEAR

We offer a variety of outerwear styles in school colors.



CUSTOM, RAIN OR SHINE

Our full-line of umbrellas are offered in a variety of colors and include silver umbrellas that specifically protect players from the draining heat of the sun.



CUSTOM COLLECTION

Sun Mountain can customize most of our golf bag and accessory line with embroidery and/or heat transfer technology. Contact your sales representative or Sun Mountain Customer Service for more information.



**THE TEAM
STAND
STAND BAG**



FEATURES

- 8.5" / 4-WAY TOP
- 7 POCKETS
- E-Z LITE DUAL STRAP
- LIGHTWEIGHT & FULLY FEATURED
- EASY ACCESS POCKETS
- EASY ON AND OFF
- CARRY-ASSIST GRAB LOOPS



▲ GRAY CAMO ▲ NAVY CAMO ▲ BLACK CAMO ▲ BLACK



▲ WHITE ▲ GRAY ▲ NAVY ▲ GREEN ▲ ROYAL ▲ RED



▲ NAVY-WHITE ▲ GREEN-WHITE ▲ MAROON-WHITE ▲ ROYAL-WHITE ▲ RED-WHITE



**THE TEAM
SUPERLITE
STAND BAG**



FEATURES

- 8.5" / 4-WAY TOP
- 7 POCKETS
- E-Z LITE DUAL STRAP
- LIGHTWEIGHT & FULLY FEATURED
- EASY ACCESS POCKETS
- EASY ON AND OFF
- CARRY-ASSIST GRAB LOOPS



▲ WHITE ▲ GRAY ▲ NAVY



**CHOOSE YOUR TEAM BAG
AND YOUR TOP COLOR**

Discover all available top colors
on the next page ▶▶▶



**THE TEAM
H2NO
STAND BAG**



FEATURES

- 8.5" / 4-WAY TOP
- 8 POCKETS
- E-Z LITE DUAL STRAP
- LIGHTWEIGHT & FULLY FEATURED
- EASY ACCESS POCKETS
- WATERPROOF FABRIC
- CARRY-ASSIST GRAB LOOPS



▲ WHITE ▲ BLACK ▲ NAVY ▲ GRAY

SELECT YOUR TOP COLOR

We offer bag tops in eleven colors. You can mix and match the top colors with the color offerings in the three Team bags.



? ABOUT

HOW TO CUSTOMIZE YOUR BAGS?

1 SEND US YOUR LOGO

Whether you want an embroidered or heat-transferred logo, please send us an AI, EPS or high quality JPG file of your artwork. If you have an existing embroidery file for apparel you want to use, you may send that file.



2 WE DEVELOP THE LOGO FILES

We use the logo files you send us to order the heat transfers and embroidery files.



3 WE CUSTOMIZE YOUR GEAR TO YOUR SPECIFICATIONS

Please provide logo location and logo colors at time of order.



GO FURTHER >>> IN THE SUN MOUNTAIN EXPERIENCE

WE COVER ALL YOUR CUSTOM NEEDS

Sun Mountain has a dedicated staff that manages your orders and works with our highly trained embroidery and heat transfer crew to produce customized bags, outerwear, and accessories to your specifications.



DOWNLOAD →
OUR BRAND NEW
TEAM PLAYBOOK



C-130

The C-130, Sun Mountain's best-selling cart bag, was created to work optimally on a cart. All features are designed with cart use in mind. The pockets are forward-facing and easily accessible when the bag is on a cart. The C-130S Hybrid Bag is set up for riding or push cart use and has a stand for use on the range.

#1 CART BAG FOR 15+ YEARS

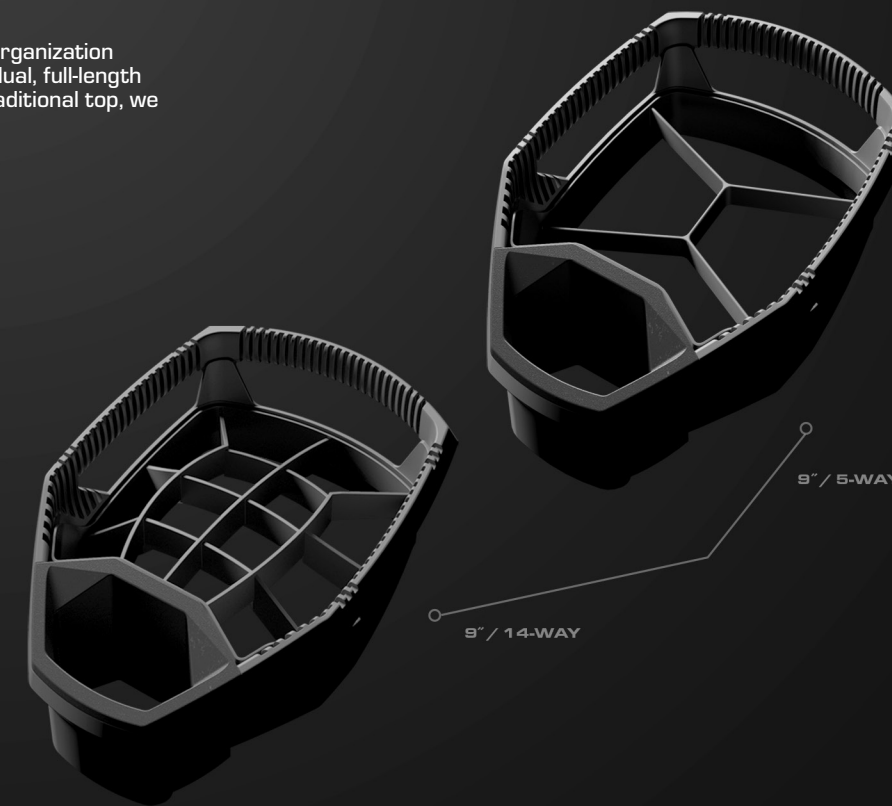


C-130S

Adapted from the C-130 Cart bag, the C-130S is designed primarily for cart use, with a stand system added for the range. Cart-friendly features include a leg-lock system, a cart strap tunnel which allows full pocket access when the bag is on a cart and a cart-friendly bottom that fits nicely into riding cart bag wells.

5-WAY OR 14-WAY?

Whether the golfer prefers the organization and protection of fourteen individual, full-length dividers or the ease of a more traditional top, we have them covered.



IF YOU'RE LOOKING FOR EFFICIENCY

The Granite has 37.5^g sixty-gram insulation which retains body heat, while 37.5 active particles embedded in the insulation accelerate vapor movement and prevent overheating and moisture build-up.



GRANITE II JACKET

BEST-SELLER COLLECTION

Since we introduced the C-130 nearly 20 years ago, it has been the industry leader in cart bags. Through the years, we've made one improvement after another that make it a favorite with golfers.



THE C-130
CART BAG



FEATURES

9.0" / 14-WAY TOP | 13 POCKETS | SMART STRAP SYSTEM
14 INDIVIDUAL, FULL-LENGTH DIVIDERS | EASY-ACCESS POCKETS
THREE UTILITY HANDLES | CART STRAP PASS-THROUGH



▲ BLACK-STEEL-RUSH RED



5 WAY

ALTERNATE TOP AVAILABLE

For those that prefer a more traditional top, we provide the C-130 with a 5-way top in three color options.

- BLACK
- PATRIOT
- HARBOR-SPRUCE-OGHRE

ALSO AVAILABLE
5 WAY

ALSO AVAILABLE
5 WAY

ALSO AVAILABLE
5 WAY



▲ SURF-RIVER

▲ WHITE-BLACK

▲ NAVY VECTOR-NAVY

▲ BLACK

▲ HARBOR-SPRUCE-OGHRE

▲ PATRIOT



▲ NAVY-WHITE-RED

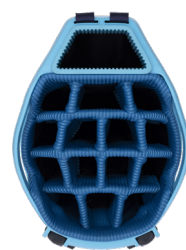
▲ PORT-RUSH RED

▲ NAVY

▲ SAND CAMO

▲ FIRST RESPONDER

▲ DUCK HUNTER



THE C-130S
HYBRID BAG



FEATURES

9"x11.5" / 15-WAY TOP | 9 POCKETS | SINGLE STRAP
CART-FRIENDLY BOTTOM | CART STRAP PASS-THROUGH PANEL
WATER-RESISTANT VALUABLES POCKET | PUTTER COMPARTMENT



▲ SURF-RIVER-NAVY

▲ HARBOR-SPRUCE-OGHRE

▲ PATRIOT

▲ BLACK

▲ SAND CAMO

? ABOUT

**FULL OF POCKETS,
FULL OF POSSIBILITIES**

The C-130 has thirteen pockets to organize all your gear.

- 1 VELOUR-LINED RANGER FINDER POCKET WITH MAGNETIC OPENING
- 2 FULL-LENGTH CLOTHING POCKET
- 3 WATER-RESISTANT, VELOUR-LINED VALUABLES POCKET
- 4 ACCESSORY POCKET
- 5 FULL-LENGTH CLOTHING POCKET WITH RAINHOOD
- 6 ACCESSORY POCKET
- 7 COOLER POCKET
- 8 STASH POCKET
- 9 STASH POCKET
- 10 VELOUR-LINED POCKET
- 11 TEE POCKET
- 12 BALL POCKET
- 13 STASH POCKET



SMART STRAPS

The Smart Strap System attaches the bag to a riding cart with two Velcro® straps which stop the bag from twisting on the cart and prevent the riding cart's straps from interfering with pocket usage.

SYNC

The Sync is designed specifically for use on push carts. We started with a top and bottom built to nest in the upper and lower bag wraps of our carts. Then, we molded the bottom so it fits over the lower bag rest of Speed Cart V1R, Pathfinder PX3 and PX4 to limit side-to-side bag motion. In addition, all pockets are forward-facing and accessible when the bag is on a cart. Finally, there is a cart strap passthrough so the Sync can be strapped to the cart without hindering pocket usage.



SPEED CART
V1R

READY TO RIDE

Designed for riding carts, the Maverick has a cart strap pass-through panel so the bag can be strapped to the cart without compromising entry to any pockets. In addition, all pockets are conveniently forward facing for quick access.



MAVERICK

The Maverick is a lightweight, full-featured riding cart bag. For convenience, all pockets are front-facing, so they are accessible when the bag is on a cart and the top has two integrated lift-assist handles for lifting the golf bag on and off the cart. The full-length, individual club dividers protect clubs and prevent the migration of club shafts.



MEN'S CART BAG COLLECTION

Sun Mountain cart bags are thoughtful in design. All pockets are easily accessible when the bag is strapped to a cart and the organizer tops have fourteen full-length, individual dividers to protect club shafts. For ease of use, the putter wells are roomy. In addition, the Sync bag has a bottom custom molded to fit over the lower bag rest of Sun Mountain push carts to prevent the bag from shifting on the cart.



THE MAVERICK
CART BAG

14 WAY SINGLE STRAP 9

FEATURES

9.0" / 14-WAY TOP | 9 POCKETS | ALL POCKETS FRONT-FACING
14 FULL-LENGTH DIVIDERS | CART STRAP PASS-THROUGH PANELS
VELOUR-LINED VALUABLES & RANGE FINDER POCKETS



▲ RIVER-NAVY



▲ PATRIOT



▲ BLACK



▲ BLACK-STEEL-RUSH RED



▲ NAVY-WHITE-RED



▲ PORT-RUSH RED



▲ WHITE-BLACK-RED



▲ TROPIC-MIDNIGHT-WHITE



▲ HARBOR-SPRUCE-OCBRE



THE SYNC
CART BAG

14 WAY SINGLE STRAP 13

FEATURES

9.0" / 14-WAY TOP | 13 POCKETS | CART STRAP PASS-THROUGH
4 VELOUR-LINED VALUABLES POCKETS | INTERLOCKING BOTTOM
CART BUMPERS & REINFORCED COLLAR FOR DURABILITY



▲ BLACK-WHITE-RUSH RED



▲ HARBOR-SPRUCE-OCBRE



▲ BLACK-STEEL-VECTOR



▲ RIVER-SURF-NAVY



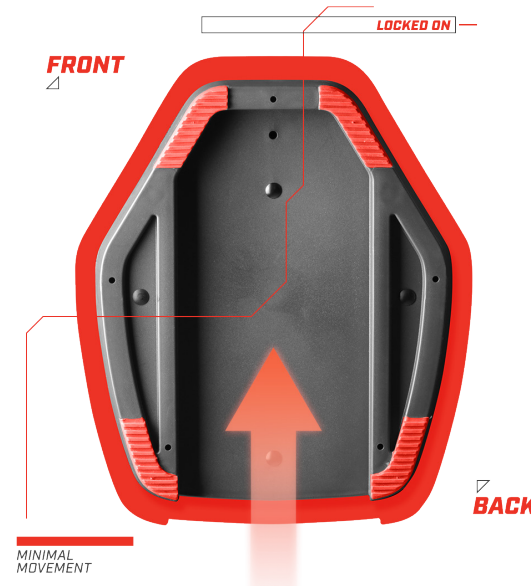
▲ BLACK

▲ PATRIOT

? ABOUT

LOCKED, LOADED & READY

Sync's bag bottom is molded to fit over the lower bag rests of the Speed Cart and Pathfinder PX3/PX4 push carts to limit side-to-side movement of the bag. This feature is also available on the Women's Sync, the Eco-Lite Cart Bag, and the Mid-Stripe 4-Way and 14-Way Cart Bags.



GO FURTHER
IN THE SUN MOUNTAIN EXPERIENCE

CART ON-THE-GO, THE EASY WAY

The 3-Wheel Cover has a large U-shaped opening to provide ease of loading/unloading your Speed Cart V1R so you don't drag grass clippings and soil into your rig.



SPEED CART V1R
DISCOVER P.70



3-WHEEL COVER
DISCOVER P.77

2.5+ & 3.5LS

Designed for the walking golfer, the 2.5+ and 3.5LS 14-Way stand bag redefine the features that can be offered in lightweight carry bags.



2.5+

3.5LS

LIGHTER TOP & MATERIALS

When designing our lightweight stand bags, Sun Mountain uses the lightest weight plastic we can that meets our stringent strength testing requirements. Likewise, we identify lighter weight fabrics that meet our tensile and abrasion testing standards.



CARBON FIBER LEGS

Carbon fiber is known to have high tensile strength and be lighter weight than many more conventional materials, which is why Sun Mountain chooses to use carbon fiber legs on our 2.5+ Stand Bags.

WOMEN'S LIGHT SERIES COLLECTION

Sun Mountain's core line of stand bags offers golfers the option to choose a lightweight stand bag that meets their requirements. The 2.5+ is our lightest weight bag and has a variety of pockets. If a 14-Way top is a must, the 3.5LS 14-way has the individual, full-length dividers they are seeking.



THE 2.5+ STAND BAG



FEATURES

7.5" / 4-WAY TOP | 6 POCKETS | X-STRAP® DUAL STRAP
 ULTRA LIGHTWEIGHT AND FULLY-FEATURED | EASY ON & OFF
 VELOUR-LINED VALUABLES POUCH | SAME BAG HEIGHT AS MEN'S



▲ NAVY-INFINITY-AZALEA ▲ BLACK-WHITE ▲ BLACK-SPRUCE-MINT ▲ LILAC-PLUM-VIOLET



THE 3.5LS 14-WAY STAND BAG



FEATURES

8.75" x10.25" / 14-WAY TOP | 9 POCKETS | E-Z LITE® DUAL STRAP
 14 FULL-LENGTH, INDIVIDUAL DIVIDERS | MULTIPLE STASH POCKETS
 2 VELOUR-LINED VALUABLES POCKETS | CARRY-ASSIST GRAB LOOPS



▲ PALM-SPRUCE-CORAL ▲ NAVY FLOWER-NAVY-VIOLET ▲ HIGHLINE-BLACK-PUNCH ▲ BLACK-BLACK DIAMOND

? ABOUT

E-Z LITE TECHNOLOGY

The E-Z Lite Strap System allows for easy on and off.



GO FURTHER ▶▶
 IN THE SUN MOUNTAIN EXPERIENCE

PERFORM BETTER WITH WEIGHTLESS OUTERWEAR

Lightweight, high-performance outerwear helps you play better, longer. See our full line of outerwear in the new Fall 2023/Spring 2024 catalog.



SECOND LAYER
 OUTERWEAR CATALOG



MONSOON SHORT-SLEEVE
 OUTERWEAR CATALOG

STELLAR

A lightweight, full-featured riding cart bag, the Stellar has fourteen full-length, individual club dividers to protect clubs; fully accessible, forward-facing pockets; and fourteen full-length club dividers to protect and organize clubs.

DIVA

Our best-selling women's golf bag, the Diva is a riding cart bag with a stylish edge. Diva comes complete with all the features that make our cart bags so functional. It has a spacious top with fourteen individual, full-length dividers, forward-facing pockets that are fully accessible, and built-in top handles that assist in loading the bag on a cart.

SYNC

Designed specifically for use on push carts, the Sync has a top and bottom built to nest in the upper and lower bag wraps of our carts. In addition, the bottom is molded to fit over the lower bag rest of Speed Cart V1R, Pathfinder PX3 and PX4 push carts and there is a cart strap pass-through so the Sync can be strapped to the cart without hindering pocket access.

RANGEFINDER POCKET

Designed so the cart strap passes behind the pocket so the rangefinder is always easily accessible.



LOCKED BOTTOM

The Sync's bag bottom is molded to fit over the lower bag rests of the Speed Cart and Pathfinder PX3/PX4 push carts to limit side-to-side movement of the bag.



WOMEN'S CART BAG COLLECTION

Our total commitment to product design and craftsmanship results in bags that are stylish and functional in detail. Each cart bag is designed to work optimally for its intended purpose.



THE DIVA
CART BAG

14 WAY SINGLE STRAP 8

FEATURES

- 9.0" / 14-WAY TOP
- 8 POCKETS
- SMART STRAP SYSTEM
- VELOUR-LINED RANGE FINDER POCKET
- COOLER POCKET
- CART BUMPERS
- FOUR UTILITY HANDLES



▲ STEEL-OPAL-CROSSHATCH ▲ STEEL-INFINITY-HIGHLINE ▲ LILAC-PLUM-VIOLET ▲ BLACK-DIAMOND
▲ CARBON-BLACK ▲ CORAL-ROSE-PEAK ▲ BLACK-TROPIC FLOWER



THE STELLAR
CART BAG

14 WAY SINGLE STRAP 11

FEATURES

- 9.0" / 14-WAY TOP
- 11 POCKETS
- UNDER 6 POUNDS
- CART BUMPERS
- CART STRAP PASS-THROUGH
- VELOUR-LINED VALUABLES POCKET
- COOLER POCKET



▲ NAVY-INFINITY-AZALEA ▲ LILAC-PLUM-VIOLET ▲ SPRUCE-BLACK-MINT ▲ NAVY TROPIC-NAVY-VIOLET ▲ CROSSHATCH-OPAL-IRON ▲ WHITE-BLACK-PUNCH

GO FURTHER ▶▶
IN THE SUN MOUNTAIN EXPERIENCE

BEST SELLER
OUTFITS TO MATCH

Check out our Fall 2023/Spring 2024 Outerwear catalog to choose outerwear styles to merchandise with your bag selections.



GRADIENT JACKET
OUTERWEAR CATALOG



COLTER VEST
OUTERWEAR CATALOG



THE SYNC
CART BAG

14 WAY SINGLE STRAP 12

FEATURES

- 9.0" / 14-WAY TOP
- 12 POCKETS
- CART BUMPERS
- CART STRAP PASS-THROUGH
- 14 FULL-LENGTH CLUB DIVIDERS
- THREE VELOUR-LINED VALUABLES POCKETS
- COOLER POCKET



▲ SPRUCE-PALM-BLACK ▲ NAVY-NAVY FLOWER-CADET ▲ INFINITY-NAVY-AZALEA ▲ LILAC-PLUM-VIOLET ▲ BLACK-WHITE

MID-STRIPE BAGS & ACCESSORIES

The Mid-Stripe Bag Collection is so successful we are offering the Mid-Stripe in three models of stand bags and two models of cart bags. To complete the package, we are releasing a full set of accessories to match the distinctive look of the bags.



SONNENALP

COLLECTION

Adventure with style, the Sonnenalp Collection is a window back in time merging perfectly with modern features.



**THE MID-STRIPE
STAND BAG**



FEATURES

- 8.5" / 4-WAY | 7 POCKETS | VINYL FABRIC
- E-Z LITE DUAL STRAP | MATCHING RAINHOOD
- CUSTOMIZABLE CHROME PLATE | MULTIPLE VALUABLES POCKETS



▲ CABIN-UMBER-WHEAT ▲ WHITE-CADET-BRICK ▲ LODEN-MOSS-INFERNO ▲ FROST-NAVY-RED



▲ PORT-BRICK-GOLD ▲ BLACK-GUNMETAL-RED ▲ BLACK ▲ NAVY-FROST ▲ WHITE

**DISCOVER THIS YEAR'S
NEW COLORS**

These three new colors will be available late Fall 2023.

- WHITE-JADE-AZALEA
- GREEN
- CARIBBEAN SEA-TEAL-SUDAN



ALTERNATE TOP AVAILABLE

14 WAY

8.75" x 10.25"

Fourteen full-length box construction dividers protect clubs.

- BLACK-GUNMETAL-RED
- WHITE-JADE-AZALEA
- FROST-NAVY-RED
- WHITE-CADET-BRICK
- CABIN-UMBER-WHEAT
- NAVY-FROST
- BLACK • WHITE

GO FURTHER ▶▶
IN THE SUN MOUNTAIN EXPERIENCE

**MAKE YOUR BAG
UNIQUE**

Mid-Stripe, Baron and Dundee bags come with a customizable plate. They can be personalized with initials or club logos.



**DUAL STRAPS
OR SINGLE STRAP?**

All Mid-Stripe Stand Bags are designed to take either a single or dual strap.

**SINGLE STRAP
ACCESSORY**





**THE MID-STRIPE
STAND BAG**



FEATURES

- 8.5" / 4-WAY | 7 POCKETS | SINGLE STRAP SYSTEM
- VINYL FABRIC | MULTIPLE VELOUR-LINED POCKETS
- CUSTOMIZABLE CHROME PLATE | MATCHING RAINHOOD



▲ CABIN-UMBER-WHEAT ▲ WHITE-CADET-BRICK ▲ LODÉN-MOSS-INFERNO ▲ FROST-NAVY-RED



▲ PORT-BRICK-GOLD ▲ BLACK-GUNMETAL-RED ▲ BLACK ▲ NAVY-FROST ▲ WHITE

GO FURTHER ▶▶
IN THE SUN MOUNTAIN
EXPERIENCE

**DISCOVER THE
ASSORTED ACCESSORIES**

Check out the full line of matching Mid-Stripe accessories including the Boston Bag, towels, tees, headcovers, etc.

DISCOVER P. 46-47



**DISCOVER THIS YEAR'S
NEW COLORS**

These three new colors will be available late Fall 2023.

- WHITE-JADE-AZALEA
- GREEN
- CARIBBEAN SEA-TEAL-SUDAN



**DUAL STRAPS
OR SINGLE STRAP?**

All Mid-Stripe Stand Bags are designed to take either a dual or single strap.

**DUAL STRAP
ACCESSORY**



▲ CABIN-UMBER-WHEAT ▲ WHITE-CADET-BRICK ▲ LODÉN-MOSS-INFERNO ▲ FROST-NAVY-RED ▲ WHITE-JADE-AZALEA ▲ CARIBBEAN SEA-TEAL-SUDAN



▲ PORT-BRICK-GOLD ▲ BLACK-GUNMETAL-RED ▲ BLACK ▲ NAVY-FROST ▲ WHITE ▲ GREEN



THE MID-STRIPE "ACE" STAND BAG



FEATURES

- 7.5" / 4-WAY | 7 POCKETS | SINGLE STRAP SYSTEM
- VINYL FABRIC | THREE VELOUR-LINED POCKETS
- CUSTOMIZABLE CHROME PLATE | MATCHING RAINHOOD



▲ FROST-NAVY-RED ▲ WHITE-CADET-BRICK ▲ BLACK ▲ CABIN-UMBER-WHEAT ▲ WHITE

GO FURTHER

IN THE SUN MOUNTAIN EXPERIENCE

DUAL STRAPS AVAILABLE

The E-Z Lite Dual Strap System is available as an accessory for all colors of Mid-Stripe Bags.



AVAILABLE COLORS P.43



▲ NAVY-FROST ▲ GREEN

? ABOUT

CLASSIC AND LIGHTWEIGHT

The Mid-Stripe Ace has all of the wonderful features of the Mid-Stripe Single Strap Bag but with an inch smaller top for a lighter, more compact carry.



THE MID-STRIPE CART BAG



FEATURES

- 9.0" / 4-WAY | 8 POCKETS | VINYL FABRIC
- THREE VELOUR-LINED VALUABLES POCKETS | MATCHING RAINHOOD
- BOTTOM SYNCNS W/ SMS CARTS | CUSTOMIZABLE PLATE



▲ WHITE-CADET-BRICK ▲ FROST-NAVY-RED ▲ CABIN-UMBER-WHEAT ▲ BLACK-GUNMETAL-RED ▲ BLACK ▲ NAVY-FROST ▲ WHITE ▲ GREEN



THE MID-STRIPE CART BAG



FEATURES

- 9.0" / 14-WAY | 8 POCKETS | VINYL FABRIC
- 14 FULL-LENGTH DIVIDERS | VELOUR-LINED RANGE FINDER POCKET
- BOTTOM SYNCNS W/ SMS CARTS | CUSTOMIZABLE PLATE



▲ WHITE-JADE-AZALEA ▲ FROST-NAVY-RED ▲ BLACK-GUNMETAL-RED ▲ BLACK ▲ WHITE-CADET-BRICK ▲ CABIN-UMBER-WHEAT ▲ WHITE ▲ NAVY-FROST ▲ CARIBBEAN SEA-TEAL-SUDAN ▲ NAVY-FROST

BOSTON BAG
ACCESSORY



FEATURES

18"L x 10"W x 14"D | 2 MAIN COMPARTMENTS | VISLON ZIPPERS
ROBUST BOTTOM COMPARTMENT | CUSTOMIZABLE CHROME PLATE



▲ WHITE-CADET-BRICK ▲ FROST-NAVY-RED ▲ PORT-BRICK-GOLD ▲ LODEN-MOSS-INFERNO ▲ CABIN-UMBER-WHEAT ▲ BLACK-GUNMETAL-RED



▲ BLACK ▲ NAVY-FROST ▲ WHITE ▲ WHITE-JADE-AZALEA ▲ GREEN ▲ CARRIBEAN SEA-TEAL-SUDAN

ASSORTED HEADCOVERS
ACCESSORY

FEATURES

SOLD INDIVIDUALLY IN 1, 3, 5, X, H | VINYL W/ A VELOUR LINING
AVAILABLE IN ALL MID-STRIPE COLORS

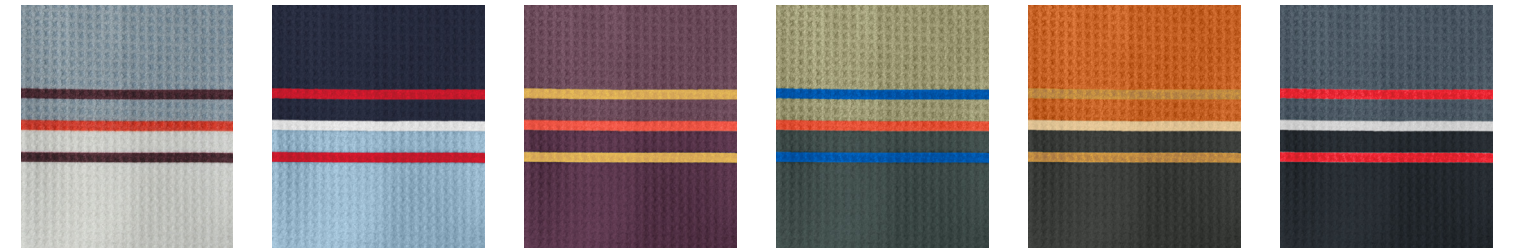


▲ WHITE-CADET-BRICK ▲ FROST-NAVY-RED ▲ PORT-BRICK-GOLD ▲ LODEN-MOSS-INFERNO ▲ BLACK-GUNMETAL-RED ▲ CABIN-UMBER-WHEAT

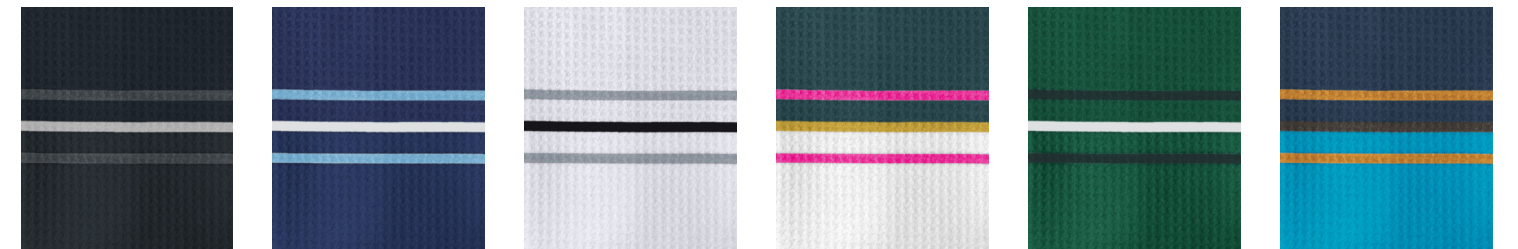


▲ BLACK ▲ NAVY-FROST ▲ WHITE ▲ WHITE-JADE-AZALEA ▲ GREEN ▲ CARRIBEAN SEA-TEAL-SUDAN

MICROFIBER TOWELS
ACCESSORY



▲ WHITE-CADET-BRICK ▲ FROST-NAVY-RED ▲ PORT-BRICK-GOLD ▲ LODEN-MOSS-INFERNO ▲ CABIN-UMBER-WHEAT ▲ BLACK-GUNMETAL-RED

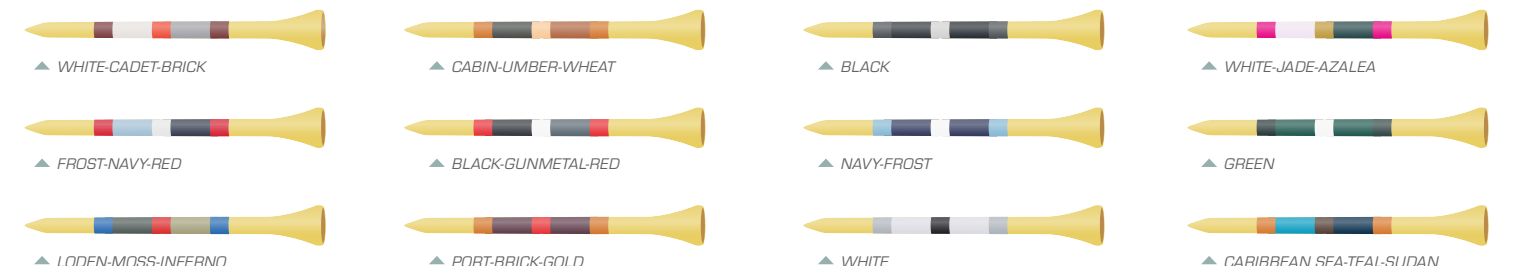


▲ BLACK ▲ NAVY-FROST ▲ WHITE ▲ WHITE-JADE-AZALEA ▲ GREEN ▲ CARRIBEAN SEA-TEAL-SUDAN

ALIGNMENT STICK COVERS
ACCESSORY



MATCHING TEES
ACCESSORY



DUNDEE

A handsome cart bag that reminds us of earlier generations of golfers, the Dundee is constructed with crocodile textured vinyl and has leather and brushed brass accents.

BARON

The Baron is a striking, traditionally-styled stand bag with modern features like a velour-lined, magnetic-closure rangefinder pocket; legs; and a top with an integrated handle.



THE BARON STAND BAG



4 WAY



SINGLE STRAP



6

FEATURES

- 8.5" / 4-WAY TOP
- 6 POCKETS
- BALLISTIC-STYLE NYLON
- CUSTOMIZABLE CHROME PLATE
- HYDRATION POUCH
- VELOUR-LINED VALUABLES POCKET



▲ GREEN-LARK-BEACH

▲ BLACK-NICKEL-CADET

▲ SKY-COBALT-NAVY

▲ NAVY-RED-WHITE

▲ BEACH-TAUPE-BLACK



THE DUNDEE STAND BAG



3 WAY



SINGLE STRAP



9

FEATURES

- 8.5" / 3-WAY TOP
- 9 POCKETS
- SINGLE STRAP SYSTEM
- SPACIOUS BELLY POCKET
- PLUSH-LINED STRAP FOR COMFORT
- MULTIPLE ACCESSORY POCKETS
- CUSTOMIZABLE BRASS PLATE



▲ NAVY-MIRAGE-BEACH



▲ JAVA-BROWN-PECAN

▲ BLACK-WHITE

BRING YOUR PLAYLISTS TO THE COURSE

The first bags on the market with an integrated Bluetooth speaker system, the Boom Bags allow golfers to listen to their favorite sportscast or playlist on the course.



5 WAY



ALTERNATE TOP AVAILABLE

The cart bag is also available with a 5-way top in two color options.

- BLACK-WHITE
- BLACK

THE BOOM STAND BAG



4 WAY DUAL STRAPS 8

FEATURES

- 8.25" / 4-WAY
- 8 POCKETS
- E-Z LITE DUAL STRAP
- SINGLE STRAP INCLUDED
- INTEGRATED BLUETOOTH SPEAKERS
- BLUETOOTH CONTROLLER
- BEVERAGE SLOT



▲ CAMO-BLACK-AZTEC ▲ BLACK-RED ▲ CAMO-NAVY-OCEAN ▲ WHITE-BLACK ▲ BLACK

THE BOOM CART BAG



14 WAY 5 WAY SINGLE STRAP 12

FEATURES

- 9.0" / 14-WAY
- 12 POCKETS
- SINGLE STRAP SYSTEM
- MEDIA POCKET WITH CLEAR VINYL WINDOW
- BUILT-IN SPEAKERS
- WIRELESS CONTROLLER
- PORTABLE CHARGING DEVICE INCLUDED



▲ BLACK-RED ▲ CAMO-BLACK-AZTEC ▲ NAVY-CAMO-OCEAN ▲ BLACK-WHITE ▲ BLACK

STRONG, DURABLE & RELIABLE

WeatherMax® has a history of developing performance fabrics for outdoor uses like deck furniture, awnings, and covers for boats. The fabric we selected is highly UV and water-resistant and ultimately, long-wearing. In other words, it is perfect for golf.



THE WEATHERMAX STAND BAG



FEATURES

- 8.5" / 4-WAY
- 9 POCKETS
- E-Z LITE DUAL STRAP
- COMFORTABLE HIP PAD
- MATCHING RAINHOOD INCLUDED
- HIGHLY FADE RESISTANT
- ROOMY, VELOUR-LINED VALUABLES POCKET



▲ COBALT-NAVY

▲ SLATE-BLACK

▲ GRAY-MOSS-INFERNO

▲ MIST-GRAY

THE WEATHERMAX CART BAG



FEATURES

- 9.0" / 14-WAY
- 13 POCKETS
- SMART STRAP SYSTEM
- EASY-OPENING VISLON ZIPPERS
- MATCHING RAINHOOD
- DEDICATED PUTTER TUBE
- MULTIPLE VALUABLES POCKETS



▲ COBALT-NAVY

▲ SLATE-BLACK

▲ GRAY-MOSS-INFERNO

▲ MIST-GRAY

WATERPROOF

H2NO SERIES

For 2024, we are offering a full line of waterproof bags: the Litespeed Stand Bag with a 7.5", 4-way top, the Lite Stand Bag with fourteen full-length dividers, and the redesigned Lite Cart Bag.

H2NO LITE CART



H2NO LITESPEED



KEEP GEAR DRY

The bags are waterproof if the zippers are closed and the rainhood is used as designed.

OUTERWEAR

We have a full range of waterproof gear for men and women.



H2NO LITE 14-WAY



WATERPROOF COLLECTION

In 2007, after playing in one too many tournaments in the rain, we applied our rainwear expertise to building waterproof golf bags. H2NO bags are constructed with textiles that have a waterproof treatment on both sides of the fabric and high-quality, water-resistant zippers. On top of which, we seal all the seams.



THE H2NO LITESPEED
STAND BAG



FEATURES

- 7.5" / 4-WAY | 7 POCKETS | X-STRAP SYSTEM
- DUAL VALUABLES POCKETS | MATCHING RAINHOOD
- CARRY-ASSIST GRAB LOOPS | EASY-TO-USE STRAP SYSTEM



▲ NAVY-DUSK-BREEZE



▲ STEEL-BLACK

▲ MAJOR BROWN-GRAY



THE H2NO LITE
CART BAG



FEATURES

- 9.0" / 14-WAY | 7 POCKETS | PUTTER WELL
- VELOUR-LINED VALUABLES POCKET | RANGEFINDER POCKET
- WATER-RESISTANT ZIPPERS | 14 FULL-LENGTH DIVIDERS



▲ NAVY-DUSK-BREEZE



▲ STEEL-BLACK

▲ MAJOR BROWN-GRAY



THE H2NO LITE 14-WAY
STAND BAG



FEATURES

- 8.5"x 9.5" / 14-WAY | 7 POCKETS | E-Z LITE DUAL STRAP
- DUAL VALUABLES POCKETS | MATCHING RAINHOOD
- 14 FULL-LENGTH DIVIDERS | BEVERAGE POUCH



▲ NAVY-DUSK-BREEZE



▲ STEEL-BLACK

▲ MAJOR BROWN-GRAY

GO FURTHER ▶▶
IN THE SUN MOUNTAIN EXPERIENCE

WEATHER IS NOT AN EXCUSE

Sun Mountain has a long history of producing golf bags and outerwear for rain or shine. We design outerwear for wind, rain, mild conditions and cold plus silver umbrellas with a UPF rating of 60+.



TOUR SERIES+ JACKET
OUTERWEAR CATALOG



DRY HOOD
DISCOVER P.77



UMBRELLAS
DISCOVER P.78

LEATHER

CLASSIC, THROUGH THE YEARS

The Leather Collection is a nod to golf's storied past featuring styles and materials that speak to the tradition and richness of the game. These bags are not historic replicas; they are designed for the way we play golf today. Crafted with the finest leather available, the Sun Mountain leather collection is designed and constructed with care and meticulous attention to detail.

LEATHER

LEATHER SUNDAY

LEATHER CART

LEATHER STAND

PREMIUM MATERIALS

LEATHER COLLECTION

Combining traditional materials and meticulous workmanship with modern technology created these new classics.



**THE LEATHER
STAND**
STAND BAG



FEATURES

8.5" / 4-WAY | 5 POCKETS | SINGLE STRAP SYSTEM
PREMIUM COW LEATHER | ULTRALIGHT CARBON LEGS
VELOUR-LINED VALUABLES POCKET | NYLON RAINHOOD INCLUDED



▲ BLACK ▲ BLACK-DARK BROWN ▲ BROWN-KHAKI ▲ BLACK-WHITE ▲ NAVY-WHITE-RED



**THE LEATHER
SUNDAY**
CART BAG



FEATURES

8.5" / 4-WAY | 3 POCKETS | SINGLE STRAP SYSTEM
CLASSIC FEEL | LEATHER-WRAPPED TOP
LIFT-ASSIST HANDLES | ACCESSORY POCKETS



▲ BROWN-KHAKI



**THE LEATHER
CART**
CART BAG



FEATURES

8.5" / 4-WAY | 4 POCKETS | SINGLE STRAP SYSTEM
LEATHER-WRAPPED TOP | LIFT-ASSIST HANDLES
VELOUR-LINED VALUABLES POCKET | NYLON RAINHOOD INCLUDED



▲ BLACK-DARK BROWN ▲ BLACK ▲ BROWN-KHAKI ▲ BLACK-WHITE ▲ NAVY-WHITE-RED

**LEATHER
HEADCOVERS**
ACCESSORY



▲ BLACK-WHITE CHEVRON ▲ BROWN-BLACK CHEVRON ▲ NAVY-RED-WHITE ▲ BLACK-STRIPE ▲ BROWN-STRIPE

**LEATHER
PUTTER COVERS**
ACCESSORY



▲ BROWN ▲ NAVY-RED-WHITE ▲ BLACK

CLUBGLIDER

ClubGlider® has revolutionized how people travel with their golf clubs. The patented ClubGlider rolls effortlessly due to the integrated leg set which supports 100% of the weight of the travel cover when the legs are extended. The legs retract into the tray for air travel and storage.

ClubGlider was awarded Golf Digest Editors' Choice – Best Travel Cover – 2016/2022

KUBE

An exciting development in travel gear, the Kube is a travel bag that uses hardy, ballistic-style fabric in combination with plastic half-shells. The Kube is large enough to fit most golf bags and folds down to 9" X 13" X 14.5" for storage.

RETRACTABLE LEGS

ClubGliders minimize the hassle of traveling with your golf gear, largely due to the retractable legs. The leg mechanism supports the weight of the bag and the pivoting wheels make the ClubGlider highly maneuverable. Pulling a loaded ClubGlider is nearly effortless.



EASY FOLDING

Kube folds down to 9" X 13" X 14.5" for compact storage



TRAVEL COLLECTION

We offer a variety of travel covers so golfers can select a model that best fits their needs. Live in an apartment? The Kube requires little storage space. Use a staff bag? ClubGlider Pro is designed to carry a staff bag or two stand bags. Love the ClubGlider Meridian but prefer vinyl? Take a look at the ClubGlider Tour Series.

THE CLUBGLIDER MERIDIAN TRAVEL BAG



FEATURES

- 11.3 LBS | 2 POCKETS - EXTERIOR ACCESS ONLY
- 52" X 14" X 14" | BALLISTIC-STYLE NYLON FABRIC
- RETRACTABLE LEGS | HEAVY DUTY ZIPPERS



▲ RED-BLACK-PORT

▲ SPRUCE-HARBOR-OGHRE

▲ TROPIC-SPRUCE



▲ BLACK-WHITE-RED

▲ GREEN-BLACK

▲ NAVY-COBALT



▲ NAVY-BLACK

▲ BLACK

THE CLUBGLIDER PRO TRAVEL BAG



FEATURES

- 14.9 LBS | 4 POCKETS - INTERIOR ACCESS ONLY
- 54" X 16" X 14" | BALLISTIC-STYLE NYLON FABRIC
- RETRACTABLE LEGS | HIGHLY MANEUVERABLE



▲ BLACK

THE CLUBGLIDER TOUR SERIES TRAVEL BAG



FEATURES

- 13.2 LBS | 2 POCKETS - EXTERIOR ACCESS ONLY
- 52" X 14" X 14" | VINYL FABRIC | TSA-APPROVED LOCK
- RETRACTABLE LEGS | HIGHLY MANEUVERABLE



▲ BLACK-WHITE

▲ BLACK

THE CLUBGLIDER JOURNEY TRAVEL BAG



FEATURES

- 10.7 LBS | 2 POCKETS - INTERIOR ACCESS ONLY
- 52" X 14" X 14" | 1200 DENIER POLYESTER FABRIC
- RETRACTABLE LEGS | HIGHLY MANEUVERABLE



▲ BLACK

▲ BLACK-GUNMETAL

THE KUBE
TRAVEL BAG



FEATURES

- 6.8 LBS | 2 POCKETS - INTERIOR ACCESS ONLY
- 52" X 14" X 14" | 9" X 13" X 14.5" (FOLDED)
- COMPACT STORAGE | BALLISTIC-STYLE NYLON FABRIC



▲ SPRUCE-HARBOR-OCBRE



▲ STEEL-BLACK-RUSH RED



▲ SPRUCE-TROPIC-POPPY



▲ NAVY-WHITE-RED



▲ NAVY-CADET



▲ JAVA-SAND CAMO



▲ BLACK



▲ CONCORD-PLUM-VIOLET



▲ BLUE-SPRUCE-WATERFALL



▲ BLACK-CAMO-INFERNO

? ABOUT

PROTECTED ALL THE WAY

Sun Mountain Travel Covers have dense foam padding in the top of the bag to help protect clubs during travel.



SPEEDCART V1R

Speed Cart® is one of the most revolutionary products in golf. Prior to Speed Cart's introduction in 1999, three-wheeled, ergonomically efficient, folding push carts did not exist in the marketplace. Through the years, we have updated Speed Cart numerous times. Speed Cart V1R is the latest generation in a rich history.



ROBUST & DURABLE BUILD

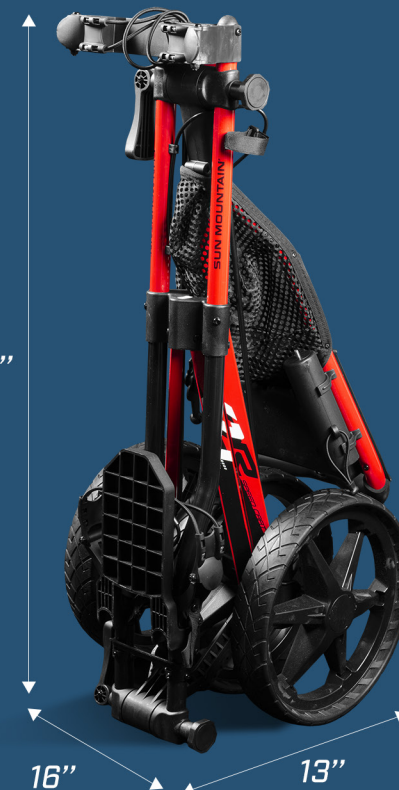
Sun Mountain manufactures its carts to last. The frames are powder-coated so the finish is tougher than conventional paint. We use high impact nylon for some fixtures, because of its balance of impact resistance, strength, and stiffness. Finally, we used high-density foam for the handle wrap and wheels.



PACKABLE WHEN FOLDED

The Speed Cart V1R folds down in four easy steps for transport and storage. For those who prefer to transport their cart in a carry case, we developed the 3-Wheel Cover.

38"



16"

13"

PUSH CART COLLECTION

Sun Mountain's award-winning collection of push carts include the Speed Cart V1R, Pathfinder PX3 and PX4. All carts are easily collapsible for storage and transport and include convenient features like the storage console that holds headcovers, balls, pencils, and tees. We also have a full range of cart accessories.

THE SPEEDCART V1R

PUSH CART



FEATURES

17.6 LBS | ADJUSTABLE BAG BRACKETS | UMBRELLA HOLDER
 MESH TRAY | 38" X 16" X 13" (FOLDED) | ACCESSORY KNOB
 FOLDS IN TWO EASY STEPS | BUILT-IN SEAT BRACKET

? ABOUT

STILL A REVOLUTION

One of the most revolutionary products in golf, the Speed Cart® has been updated numerous times through the years. The Speed Cart V1R is the latest generation in a rich history.



▲ RACE BLUE-BLAZE



▲ FIRE RED-WHITE



▲ GUNMETAL-PINK



▲ HOT PINK-WHITE-BLUE



▲ STEEL-FOG



▲ BLACK-GUNMETAL



▲ STEEL-PLATINUM



▲ BLACK-FIRE RED

? ABOUT

EMPTY YOUR POCKETS

The accessory console and mesh tray provide space to store all the necessities:

- 1 WALLET AND BALLS
- 2 PHONE SLOT AND TEE HOLDERS
- 3 HEADCOVER TRAY
- 4 BEVERAGE HOLDER



GO FURTHER >>> IN THE SUN MOUNTAIN EXPERIENCE

KEEP YOUR PUSH CART UPDATED

Sun Mountain has a full range of cart accessories and parts to keep your cart rolling.



OVERSIZED CUP HOLDER
 DISCOVER P.75



RANGE-FINDER BAG
 DISCOVER P.75

THE PX3 PATHFINDER

PUSH CART



FEATURES

16 LBS | ADJUSTABLE BAG BRACKETS | MESH TRAY
26" X 16" X 14" (FOLDED) | BUILT-IN ACCESSORY KNOB
FOLDS IN TWO EASY STEPS | CELL PHONE SLOT | UMBRELLA HOLDER

? ABOUT

**3,2,1
PLAY!**

The PX3 folds/unfolds in two simple steps and has a small, folded footprint that easily fits into your vehicle. For on-course convenience, the accessory console is designed to hold balls, tees and other necessities and includes a built-in, velour-lined valuables pouch, perfect for your range finder.



▲ MAGNETIC GRAY-RED



▲ WHITE



▲ BIG SKY BLUE



▲ CEMENT GRAY



▲ BLACK

THE PX4 PATHFINDER

PUSH CART



FEATURES

17.2 LBS | ADJUSTABLE BAG BRACKETS | UMBRELLA HOLDER
MESH TRAY | 28.5" X 17" X 15" (FOLDED) | BUILT-IN ACCESSORY KNOB
FOLDS & UNFOLDS IN TWO EASY STEPS | DUAL UMBRELLA MOUNTS

? ABOUT

**FULL
FEATURED**

The PX4 has numerous features for your convenience including a mesh headcover tray, a single piece handle so you can push the cart with one hand and adjustable bag brackets.



▲ BIG SKY BLUE



▲ BLACK



▲ MAGNETIC GRAY-RED



▲ WHITE



▲ CEMENT GRAY

ACCESSORIES

All of our accessories come in professionally designed packaging for a cohesive, eye-catching display.



UNIVERSAL ACCESSORIES

Fit on any cart with 1" tubing including Speed Cart®, Pathfinder and Micro-Cart® Series carts.



SAND/SEED BOTTLE

- HOLDS UP TO 36 OUNCES OF SEED MIX.
- DURABLE, MOLDED PLASTIC.
- ATTACHMENT KNOB INCLUDED.



CUP HOLDER OVER-SIZE

- EXPANDS TO HOLD A 4.5" BOTTLE.
- DURABLE, MOLDED PLASTIC.
- ATTACHMENT KNOB INCLUDED.



UMBRELLA HOLDER KIT

- FITS SPEED CART®, MICRO-CART OR PATHFINDER SERIES CARTS.
- ATTACHMENT INCLUDED.



ADJUSTABLE UMBRELLA HOLDER

- FITS ON ALL SUN MOUNTAIN CARTS.
- EASY TO ATTACH.
- PIVOTS BACK AND FORTH TO ADJUST THE ANGLE OF THE UMBRELLA.



BLUETOOTH SPEAKER

- SYNC'S WITH YOUR PHONE OR OTHER BLUETOOTH-ENABLED DEVICES.
- LISTEN TO YOUR FAVORITE MUSIC OR PODCAST ON THE COURSE.
- ATTACHMENT KNOB INCLUDED.



COOLER TUBE

- INSULATED NYLON PACK WITH ZIPPER CLOSURE.
- TWO MESH SIDE POUCHES.
- ACCESSORY KNOB INCLUDED.



CUP HOLDER REGULAR

- EXPANDABLE HOLDER FITS A 12 OZ. CAN OR SMALL DIAMETER BOTTLE.
- DURABLE, MOLDED PLASTIC.
- ATTACHMENT KNOB INCLUDED.



RANGE FINDER BAG

- MAGNETIC CLOSURE FOR EASY ACCESS.
- VELOUR-LINED.
- ATTACHMENT KNOB INCLUDED.



CIGAR/PENCIL HOLDER

- MULTIPLE HOLDERS TO FIT PENCILS, CIGARS AND CIGARETTES.
- ATTACHMENT KNOB INCLUDED.



PADDLE ARM BUNGEE KIT

- BUNGEE CORDS SECURE YOUR BAG TO THE CART.
- REPLACEMENT PADDLE ARMS FOR YOUR SPEED CART V1 OR MC3.



CART HANGER

- WORKS FOR SPEED CART, PATHFINDER AND MICRO-CART SERIES CARTS.
- INDUSTRIAL METAL HANGER ALLOWS YOU TO HANG YOUR CART FOR STORAGE.



SUPERCHARGED POUCH

- COMES EQUIPPED WITH A PHILIPS POWER BANK 7800 MAH LITHIUM BATTERY.
- THE POWER BANK HAS TWO USB PORTS, ONE STANDARD AND ONE RAPID-CHARGING.
- CAPABLE OF POWERING YOUR PORTABLE MUSIC SPEAKER OR RECHARGING YOUR ELECTRONIC DEVICES.
- ATTACHMENT KNOB INCLUDED.



CART SEAT

- SPRINGS UP WHEN NOT IN USE.
- SEAT PAD FOLDS DOWN FOR STORAGE.
- COMFORTABLE, PADDED SEAT.
- NOT FOR USE WITH MICRO-CARTS.



RAIN COVER

- WATER-RESISTANT COVER FOR YOUR BAG.
- E-Z FLIP HOOD PROVIDES QUICK ACCESS TO CLUBS.
- FLAPS WITH VELCRO® CLOSURE FOR EASY ACCESS TO GOLF BAG POCKETS.

SPEED CART ACCESSORIES



SPEED CART COOLER

- EASILY ATTACHES TO THE CART WITH VELCRO®.
- INSULATED LOWER POCKET WITH A REUSABLE FREEZER PACK.
- CARRY HANDLE FOR EASY TRANSPORT.



SPEED BAG

- VENTILATED, ZIPPERED MAIN COMPARTMENT.
- EXTERIOR MESH POCKET.
- EASILY ATTACHES TO THE CART WITH VELCRO®.



MESH BASKET

- NO NEED TO REMOVE THE BASKET WHEN FOLDING THE CART.
- VELCRO® TABS MAKE IT EASY TO ATTACH THE BASKET TO THE CART.



UPPER BAG BRACKET

- BUNJI CORDS SECURE YOUR GOLF BAG TO THE CART.
- STAND BAG FRIENDLY.



WHEEL COVER

- NYLON COVER WITH GATHERED ELASTIC EDGES SECURES TO ALL THREE WHEELS.
- NYLON STUFF SACK IS PROVIDED FOR STORAGE.



3-WHEEL COVER

- TWO-WAY ZIPPER.
- DURABLE TOUGH-TEK FABRIC IN WEAR AREAS.
- REMOVABLE CARRY STRAP WITH SLIP-RESISTANT, TOUGH TEK-LINED SHOULDER PAD.
- LARGE U-SHAPED OPENING FOR EASY LOADING.

PATHFINDER / MICRO-CART ACCESSORIES



MICRO-CART COOLER

- INSULATED NYLON PACK.
- HOLDS UP TO SIX 12-OUNCE CANS.
- COMES COMPLETE WITH A REUSABLE FREEZER PACK.
- ATTACHES WITH VELCRO® TABS.



MICRO BAG

- TWO EXTERIOR POCKETS INCLUDING A MESH POUCH.
- ATTACHES TO THE CART WITH VELCRO® TABS.
- VENTILATED, ZIPPERED MAIN COMPARTMENT.



WHEEL COVERS

- NYLON STUFF SACK PROVIDED FOR STORAGE.
- NYLON COVERS WITH GATHERED ELASTIC EDGES SECURE TO THE WHEELS ON BOTH SIDES OF THE CART.



4-WHEEL CART COVER

- TWO-WAY ZIPPER.
- DURABLE TOUGH-TEK IN WEAR AREAS.
- REMOVABLE CARRY STRAP WITH SLIP-RESISTANT, TOUGH TEK-LINED SHOULDER PAD.
- LARGE U-SHAPED OPENING.



BAG ACCESSORIES



DRY HOOD

- ATTACHES TO ANY GOLF BAG.
- COMES WITH A CARRYING CASE.
- FOLDED DIMENSIONS: 24" X 4.5"
- QUICK AND EASY TO ASSEMBLE.



TEAM PACK

- LIGHTWEIGHT - 1.7 LBS.
- H2NO WATERPROOF FABRIC.
- WATER-RESISTANT ZIPPERS.
- MULTIPLE INTERNAL POCKETS.

UMBRELLAS

Perfect rain or shine, the silver umbrella is UPF-rated 60+ and the other colors, 30+.

THE 68" SILVER SERIES



▲ INFERNO-SILVER



▲ BLACK-GUNMETAL-RED



▲ COBALT-NAVY



▲ ATOMIC-SILVER



▲ PINK-SILVER



▲ BLACK (MANUAL & AUTOMATIC)



▲ BLACK-WHITE



▲ SILVER (MANUAL & AUTOMATIC)



▲ COBALT-SILVER



▲ GUNMETAL-INFERNO



▲ RUSH-BLACK

THE 68" NON-STOCK



▲ BLACK



▲ NAVY



▲ BLACK (MANUAL & AUTOMATIC)



▲ SILVER (MANUAL & AUTOMATIC)



▲ GRAY



▲ BLACK-WHITE

Our non-stock umbrellas are a good choice for tournament or corporate events. Ask your rep about our heat transfer program.

FEATURES

UMBRELLAS PROTECT AGAINST UVA AND UVB RAYS

DOUBLE-CANOPY DESIGN | SLIP-RESISTANT HANDLE

THE 68" REGULAR

THE 62" REGULAR

The sale of Sun Mountain products requires adherence to the following sales policy.

Sun Mountain is committed to producing the highest quality golf products in the industry and to selling its products through pro shops and retailers that reflect the company's high standards with regard to product promotion. Sun Mountain has determined that consumer loyalty to its products develops best when those products are sold through quality-based distribution channels by retailers and pro shops that provide superior customer service. In order to protect the quality image of all Sun Mountain products purchased and resold through various outlets in the golf marketplace, Sun Mountain has established the following sales policy.

1. Sun Mountain will continue to value the business of customers who, in its view, share the company's commitment to excellence.

2. All Sun Mountain accounts are encouraged to display and sell the complete Sun Mountain product line. Support of selected products to the exclusion of other Sun Mountain products is strongly discouraged.

3. Customers are strongly encouraged to sell Sun Mountain products at or above published Sun Mountain minimum advertised prices. Advertisements or other printed materials that specify prices lower than the established minimum advertised prices are prohibited. Sun Mountain has determined that pro shops and retailers who advertise at a discount from Sun Mountain's minimum advertised prices substantially erode the quality-based distribution channels for its products and the superior product and quality image invested in by Sun Mountain Sports, Inc., and attached by the consumer to its products and their respective trade names.

4. All Sun Mountain accounts/distributors/resellers must pay invoices in accordance with the payment terms stated on each invoice.

5. Sun Mountain may refuse to sell products to customers who:

a. Redistribute those products to outlets not owned by the purchaser unless authorized in writing by Sun Mountain;

b. Sell those products from locations other than those known by Sun Mountain;

c. Sell any products which, in the opinion of Sun Mountain, infringe upon patents, trademarks or trade dress rights of Sun Mountain or its affiliates;

d. Engage in any type of sales practice which is illegal or which could have a negative impact on Sun Mountain's superior product and quality image;

e. Engage in any form of deceptive or disparaging advertising practices including misleading advertising, "bait and switch" advertising, and the use of Sun Mountain products as "loss leaders" in advertising;

f. Publish any advertisements for Sun Mountain products that specifically refer to prices lower than the published minimum advertised prices;

g. Fail to comply with applicable federal, state, county and local laws and ordinances regulating sales and advertising practices by retailers;

h. Fail to maintain an experienced and trained staff of golf equipment sales professionals to assist and advise consumers in the selection of their equipment; or

i. Fail to provide and maintain attractive facilities for consumers to view and be properly fitted for all Sun Mountain products.

CHARGES:

All prices are subject to change without notice.

PAYMENT TERMS:

For approved accounts, we offer variable terms based on sales programs. New accounts are required to submit a Sun Mountain credit application, which is available through any of our representatives or our New Account Department. Late payment will result in delay of future orders as well as the application of a finance charge based on a rate of 9.95% annually.

WARRANTY

Sun Mountain warrants its products to be free of defects in materials and workmanship. We will repair or replace products at our option. Normal wear and fading of products is not considered a manufacturer's defect. This warranty does not apply to normal deterioration caused by wear and abuse. In this case, we will repair the item for a nominal charge. Sun Mountain is the sole judge of any claim or warranty.

BAGS & CARTS

Sun Mountain warrants its bags to be free of defects in materials and workmanship for one year from date of purchase. Different carts have specific warranties that are described in product literature. This warranty does not apply to normal deterioration caused by wear and abuse. Sun Mountain may choose to send parts or replace the product. Sun Mountain is the sole judge of any claim or warranty.

OUTERWEAR

Different garments have specific warranties that are described in attached product literature. All returned items will be tested for defect and repaired or replaced at the sole discretion of Sun Mountain.

SHIPPING

All goods are FOB Missoula, Montana, shipped standard ground service. Common carrier and express services are available upon request. We may choose to ship via express service when the cost of such service is to the benefit of the customer.

SUBSTITUTION POLICY

In the interest of shipping requested product quantities and to ensure customers receive optimal freight rates, Sun Mountain may substitute product colors based on availability unless otherwise requested. Substitutions will be made judiciously and in colors consistent with the original request.

RETURN POLICY

Before returning any merchandise, you must receive an authorization number from our Customer Service Department. Defective items must be clearly marked as to the nature of the defect. Please take care to pack return items to ensure that no damage will occur in shipping.

Non-defective merchandise will be accepted if returned within 30 days of the original shipping date. A 10% restocking fee, as well as freight charges incurred, will be charged on used or returned merchandise.

Items that are special ordered, modified, fabricated or embroidered to special requirements cannot be returned.

Freight charges for refusal of merchandise or orders returned without authorization are the responsibility of the customer.

Many problems encountered with bags and carts can be repaired without returning the merchandise. Please do not return any product without authorization. Do not assume that damaged or defective merchandise will be credited.

CANCELLATION

To cancel an order, call our Customer Service Department to obtain a cancellation number. Refused orders which have not been assigned a cancellation number will be subject to the restocking fee as well as freight charges incurred. Custom orders or products which are nonstandard in any way may not be cancelled.

SHIPPING DISCREPANCIES

If shipment is received short or damaged, you must file a claim with the carrier immediately before notifying Sun Mountain. Do not discard original shipping cartons as this is frequently used to determine responsibility or damage.

These policies are not meant to be exhaustive, or to confer any rights upon customers not conferred by express agreement. Sun Mountain reserves the right to change these policies.





301 N. 1st St. W.
Missoula, MT 59802
800-227-9224

www.sunmountain.com