

**UNRL®**

DECORATION CATALOG

## INDEX

---

<b>TEAM COLOR CHART</b>	_____	3
<b>DECORATION TYPES</b>	_____	4
<b>EMBROIDERY</b>	_____	6
<b>VINYL</b>	_____	8
<b>TWILL</b>	_____	11
<b>CUSTOM PATCH</b>	_____	13
<b>SCREEN PRINT</b>	_____	14
<b>UNRL PRO STOCK COLLECTION: MEN'S</b>	_____	15
<b>UNRL PRO STOCK COLLECTION: WOMEN'S</b>	_____	45
<b>UNRL SUBLIMATION COLLECTION</b>	_____	51
<b>CONTACT</b>	_____	84

## **DECORATION POLICY**

**As an UNRL decorator, you can create unique customizations using logos, letters, numbers, words, or phrases. However, it is essential to follow the guidelines and refrain from using, submitting, copying, or publicly displaying any content that falls into the following categories:**

**1. Trademarks and Intellectual Property: Ensure your customizations do not infringe upon third-party trademarks or other intellectual property rights. It is essential to respect the rights of others and avoid using content that may lead to legal complications.**

**2. Offensive or Unlawful Content: Do not include names, words, or phrases that include profanity, inappropriate slang, incite violence, defamatory, obscene, discriminatory, sexually explicit, political, drug or alcohol, or otherwise unlawful content. Such content goes against UNRL's policies and values. Please note that the use of alcohol-related content requires prior approval from UNRL. This includes any references or mentions of alcohol brands, alcoholic beverages, or related content. UNRL reserves the right to deny approval for any alcohol-related content that may conflict with our policies and values.**

**These guidelines are in place to maintain brand integrity, protect intellectual property rights, and ensure a positive customer experience. It is advisable to review these guidelines thoroughly when creating custom designs. Please note that this is a general interpretation, please contact your account manager for anything that is in question for use, or questions regarding our policy.**

## TEAM COLOR CHART

BLACK	WHITE	GRAPHITE 431C	GRAY 430C	SILVER 429C	PRISM GRAY 428C
MAROON 505C	CARDINAL RED 202C	SPORT RED 186C	BRIGHT RED 185C	TEXAS ORANGE 159C	DARK ORANGE 172C
SPORT ORANGE 166C	LIGHT ORANGE 1575C	SPORT GOLD 1235C	SPORT YELLOW 109C	BRIGHT YELLOW 3955C	FOREST GREEN 3435C
MASTERS GREEN 342C	KELLY GREEN 347C	SEAHAWK GREEN 368C	MIDNIGHT NAVY 289C	SPORT BLUE 294C	ROYAL BLUE 286C
BRIGHT ROYAL BLUE 285C	COLUMBIA BLUE 292C	DARK PURPLE 273C	SPORT PURPLE 268C	PINK 226C	LIGHT PINK 495C
BROWN 4625C	OLD GOLD 112C	VEGAS GOLD 4515C	LIGHT VEGAS GOLD 7502C		

**This chart is for reference only. Pantone colors shown in print and on computer screens may vary from the actual colors. Compare to a Pantone book and request swatches from our preferred vendors for a true color representation. UNRL will require one of these Pantone colors for all sublimation products.**

# DECORATION TYPES

As a decorator, you are not limited to the following decoration types. If there is a type of application that you feel strongly will produce well on our product. Please send your account manager a sample to bring to our production team for approval.



## DIRECT EMBROIDERY

- + Direct embroidery application
- + Most commonly used decoration type
- + Stock fonts are not recommended
- + For embroidery standards - see page 6



## 3D EMBROIDERY

- + Direct embroidery with foam pad to produce 3D effect
- + Recommended for all hat logos
- + For embroidery standards - see page 6



## SILICONE TRANSFER

- + Heat press application
- + Recommended for 1-2 color logos
- + For vinyl standards - see page 8



## TWILL

- + Sewn-on application
- + Recommended large full chest logos in 1-2 colors
- + For twill standards See page 11



## SUBLIMATED TWILL

- + Sewn-on application
- + Cost-effective option to achieve 3+ colors with twill
- + Ideal for logos with gradients or fine detail
- + For twill standards - see page 11



## WOVEN PATCH

- + Sewn-on application
- + Recommended for a premium hat decoration option
- + For custom patch standards - see page 13



## LEATHER PATCH

- + Sewn-on application
- + Recommended for a premium hat decoration option
- + Limit to 1 color logos
- + For custom patch standards - see page 13



## 3D RUBBER PATCH

- + Sewn-on application
- + Recommended for a premium hat decoration option
- + For custom patch standards - see page 13



## SCREEN PRINT

- + Recommended color limit: 3 colors
- + Recommended for logos with fine detail
- + For screen print standards - see page 14

# **DIRECT EMBROIDERY**

## **STANDARDS**

- + No more than 6 colors are to be used per logo**
- + Ensure all connection threads are cut for clean embroidery finish**
- + Must stay within the max dimensions provided per product**
- + Use Weblon Performance Wear or similar quality backing to prevent puckering**

## **Embroidery Tips**

### **DIGITIZING**

- + Use trusted digitizer**
  - This will dictate the quality of the final product**
  - Do not use stock fonts - these typically are not digitized for the correct material**
  - Preferred Digitizing Vendor: Ignition Drawing**

### **3D EMBROIDERY**

- + 3D logos should be used on front panels of all ball caps - unless the logo is not suitable for 3D embroidery (thin lines, detailed, crest logo, etc.)**
- + See asset folder for fonts that work well with 3D embroidery for garments and headwear**

## EMBROIDERY VENDORS

### IGNITION DRAWING

Preferred Digitizing Vendor  
([ignitiondrawing.com](http://ignitiondrawing.com))

### Madeira USA

Preferred Embroidery Thread  
([madeirausa.com](http://madeirausa.com))

### Robison-Anton

Preferred Embroidery Thread  
([embstore.com](http://embstore.com))

## POOR DIGITIZING

NOT ACCEPTED:



## CONNECTION THREADS

NOT ACCEPTED:



# VINYL TRANSFERS

## STANDARDS

- + Pay attention to UNRL's Material/Fabric Compatibility to avoid peeling, dye-migration, etc.
- + Review vinyl application instructions (time, temp, pressure, peel)
- + Avoid press marks at all cost
- + Note the care instructions for the application type
- + Avoid using 3 or more colors - if using 3 or more colors consider using screen print or screen print/digital transfers (Apex Embroidery - Easy Ink)

## Vinyl Tips

### VINYL PEELING

- + Lack of pressure
  - Ensure you are using the correct application instructions per your vinyl vendor
- + Temperature
  - Invest in a laser thermometer to check and calibrate your heat presses

### DYE MIGRATION

Most of our products are polyester blends. This means if incorrect vinyl is used you will experience bleeding. This occurs when the dye from the garment bleeds into the vinyl. By simply using dye migration vinyl, such as Silicone (Stahls), you can avoid these types of production mistakes.

## VINYL VENDORS

### STAHL'S

#### + Silicone Dye-Block®

- Blocks dye migration, even on sublimated polyester
- Stretchable, with good recovery
- Matte finish, silicone feel
- Not recommended for layering (1-color application only)

### HEAT TRANSFER WAREHOUSE

#### + Siser Easy Weed Stretch

- Soft handfeel
- Stretchable, with good recovery
- Ability to layer

## DYE MIGRATION

NOT ACCEPTED:



**NOTICEABLE BLEED**



**BLOTTING BLEED**

## VINYL TIPS

### ELIMIINATING PRESS MARKS:

- + Limit the use of vinyl that exceeds 300f
- + Use heat press pads
  - Minimizes size of scorch marks
- + Use a heated lower heat platen
  - Heats adhesive from the bottom and top of the platen
- + Spray with water bottle and gently rub the scorch mark away with microfiber cloth

### PRESS MARKS

Because most of our products are polyester blends, heat press marks are unavoidable. By following the suggestions above, you can help minimize the damage done to the garment. With that being said, we highly recommend limiting the use of vinyl all together.

### HEAT PRESS MARK NOT ACCEPTED:



# TWILL DECORATION

## STANDARDS

- + Specify Pantone colors needed when submitting the order
- + Limited Sublimated Twill for medium or small emblems - if looking to achieve a full chest large emblem, consider using a kiss cut tackle twill

## TWILL VENDORS

### STAHL'S

Preferred stock twill vendor  
([stahls.com](http://stahls.com))

### Twill USA

Preferred stock twill vendor  
([Twillusa.com](http://Twillusa.com))

### Apex Transfers

Preferred sublimated twill patch vendor  
Preferred custom twill (kiss cut/tackle twill) patch vendor  
([apextranfers.com](http://apextranfers.com))

## TWILL TIPS

- + Add dimension by combining twill and direct embroidery
- + Use an accent thread color to stitch the twill to give a 1-color twill a 2-tone look
- + Sublimated twill is a cost-effective option for logos that are 3+ colors

### KISS CUT TWILL

The benefit of Kiss Cut Twill is achieving a multi-color or multi-layer look, without having to manually place each piece or layer by hand. With only one placement stitch needed, you save time by not stopping and starting your embroidery machine. This technique is preferred with full chest artwork.

### KISS CUT TWILL

APPROVED EXAMPLE:



# **CUSTOM PATCH DECORATION**

## **CUSTOM PATCH TIPS**

### **APPLICATION**

- + Slow your machine speed down**
- + Use a puddly adhesive - sprays and glue are messy and leave stains if exposed to the wrong area of the garment**
- + Leatherworks does not provide a sew file, this needs to be aquired elsewhere**
- + Great premium option for headwear**

## **CUSTOM PATCH VENDORS**

### **Leatherworks MN**

**Preferred leather patch vendor  
([leatherworksmn.com](http://leatherworksmn.com))**

### **Arrow Emblems**

**Preferred rubber patch vendor  
Preferred woven patch vendor  
([arrowemblems.com](http://arrowemblems.com))**

### **Apex Transfers**

**Preferred sublimated twill patch vendor  
([apextransfers.com](http://apextransfers.com))**

# PATCH BUILDER

**Corporate and team partners have access to apply their own custom patches to all head-wear and garments using the following steps:**

## Step 1: Select Patch Style



WOVEN



3D RUBBER

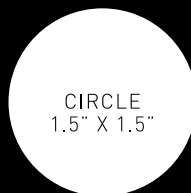
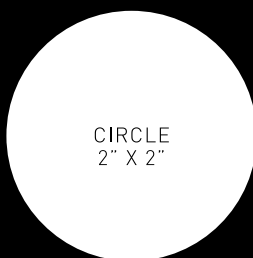
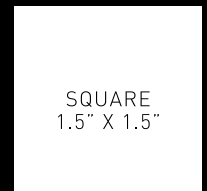
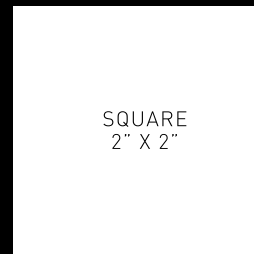
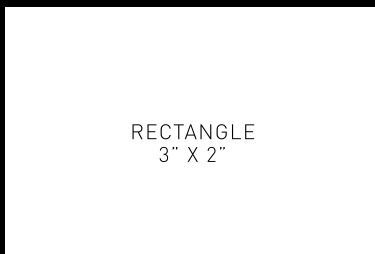


LEATHER



FLEXSTYLE

## Step 2: Select Patch Shape



## Step 3: Select Patch Application

HEAT PRESS APPLICATION

SEWN APPLICATION

**Please note, sewn application patches typically have a longer lead time and require a 2mm sew groove. You may incorporate the sew groove into the design - see the ETS patch on the next page as a reference. Flexstyle emblems do not have an option for a sewn on application**

## PATCH LOCKUPS



Gain access to our designed patch lockups crafted by our in-house experts, available for download in vector file format. By offering these assets, our objective is to uphold the utmost integrity of our embellishments while facilitating a seamless design process for you and your clients.

# SCREEN PRINT DECORATION

## STANDARDS

- + **ELT - Plastisol Ink ONLY**
- + **Products approved for screen print decoration:**
  - **Crossover Hoodie II**
  - **Crossover Crewneck**
  - **Stride Short Sleeve / Long Sleeve**
  - **Ultra Tee / Long Sleeve**

**Please submit a sample of your screenprint quality to your account manager before proceeding with the bulk production.**

## SCREEN PRINT TIPS

### **INK:**

- + **ELT - Plastisol Ink ONLY**
  - **Avoids dye-migration**
  - **Cuts the flash time in half**
  - **Cures at 250 -270 f**

# UNRL PRO STOCK COLLECTION (MEN'S)

---

**Pre-book and in-season inventory items.**

**Our vision is to create an authentic collaboration with UNRL as you enhance our products for your clients. Adhere to these guidelines, ensuring your final products embody the essence of our brand.**

## DECORATION STANDARDS

# CROSSOVER HOODIE II

### MAX DIMENSIONS:

#### LEFT/RIGHT CHEST:

- Small Emblem: 3" W x 3" H
- Direct/3D Embroidery

#### LEFT/RIGHT SLEEVE:

- Small Emblem: 3" W x 3" H
- Direct Embroidery or Custom Patch (Rubber or Woven)

#### CENTER CHEST:

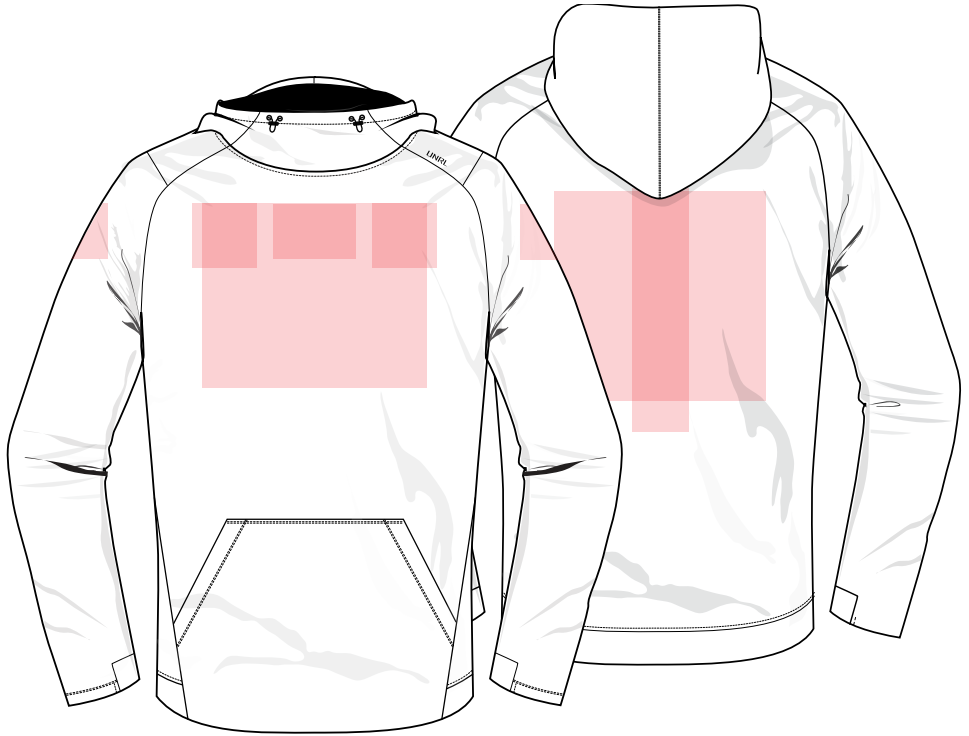
- Small Emblem: 4" W x 3" H
- Direct Embroidery or Custom Patch (Woven)
- Large Emblem: 10" W x 10" H
- Tackle Twill Patch or 3D Embroidery

#### FULL BACK:

- Name Height: 2" H
- Number Height: 8" H
- Stock Numbers/Letters

#### SINE BAR:

- 2" W x 12" H
- Twill or Direct Embroidery



### APPROVED DECORATION MATERIAL:

#### + DIRECT EMBROIDERY

#### + 3D EMBROIDERY

- UNRL Varsity Text (Assets in UNRL design folder)

#### + CUSTOM PATCH (RUBBER, WOVEN, LEATHER)

#### + TWILL (SUBLIMATION OR TACKLE)

#### + SCREEN PRINT

- ELT Plastisol Ink only
- Do not exceed 3 colors

#### + SILICONE TRANSFER

- Recommended 1 Color

## DECORATION STANDARDS

# CROSSOVER HALF-ZIP HOODIE

### MAX DIMENSIONS:

#### LEFT/RIGHT CHEST:

- Small Emblem: 3" W x 3" H
- Direct Embroidery or Custom Patch (Woven)

#### LEFT/RIGHT SLEEVE:

- Small Emblem: 3" W x 3" H
- Direct Embroidery or Custom Patch (Rubber or Woven)

#### FULL BACK:

- Large Emblem: 10" W x 10" H
- Name Height: 2" H
- Number Height: 8" H
- Stock Twill Numbers/Letters

#### SPINE BAR:

- 2" W x 12" H
- Twill Letters or Direct Embroidery



### APPROVED DECORATION MATERIAL:

#### + DIRECT EMBROIDERY

#### + 3D EMBROIDERY

#### + CUSTOM PATCH (RUBBER, WOVEN, LEATHER)

#### + TWILL (SUBLIMATION OR TACKLE)

#### + SCREEN PRINT

- ELT Plastisol Ink only
- Do not exceed 3 colors

#### + SILICONE TRANSFER

- Recommended 1 Color

## DECORATION STANDARDS

# HIGH STREET HOODIE

### LOGO STANDARDS:

#### UPPER CENTER CHEST:

- Small Emblem: MAX: 4" W x 3" H
- Small Emblem: MIN: 2.75" W x 1.5" H
- 3D or Direct Embroidery

#### LEFT/RIGHT SLEEVE:

- Small Emblem: 2.5" W x 2.5" H
- Custom Patches are preferred (Rubber or Woven)

#### DRAWSTRING HOLSTER:

- Wordmark: 2.25" W x 0.5" H
- Capitalized
- Limit the amount of characters
- Silicone (STAHL) Heat Transfer Vinyl
  - Black, White or Gray

#### FONT OPTIONS:

**MINNESOTA**

- Aldo

**MINNESOTA**

- Faceoff

**MINNESOTA**

- NY Rangers

**MINNESOTA**

- Geom Graphic Bold

**MINNESOTA**

- Industry Bold

**MINNESOTA**

- Jawbreak

\*\* Stock fonts not permitted

\*\* Wordmark logos are permitted - see example on next page (PGA)



### APPROVED DECORATION MATERIAL:

#### + DIRECT EMBROIDERY

- Tonal Recommended

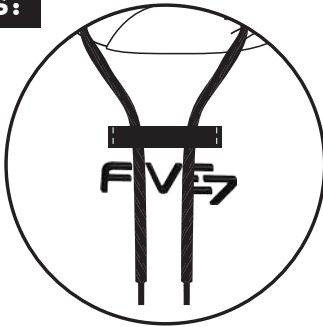
#### + 3D EMBROIDERY

- Tonal Recommended

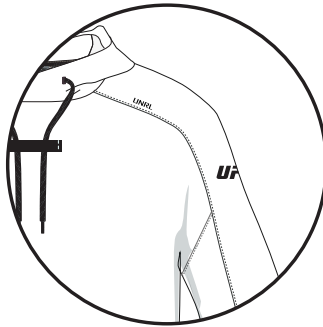
#### + CUSTOM PATCH

#### + SILICONE TRANSFER

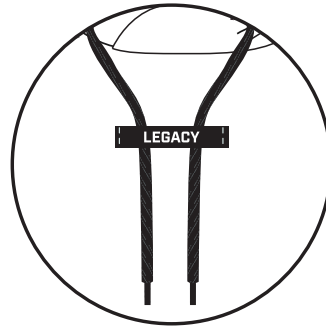
## EXAMPLES:



Upper Center Chest



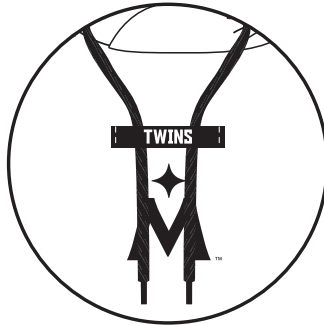
Left Sleeve



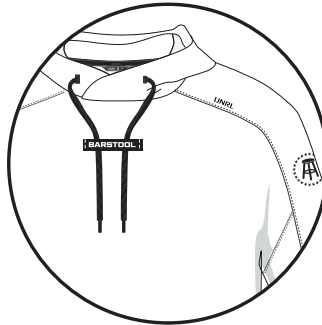
Drawstring Holster



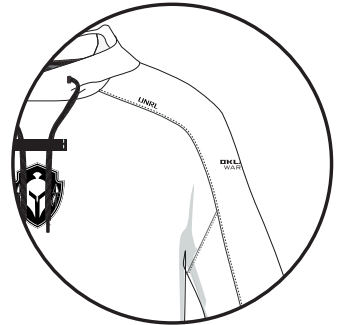
Upper Center Chest  
Drawstring Holster  
Left Sleeve



Upper Center Chest  
Drawstring Holster

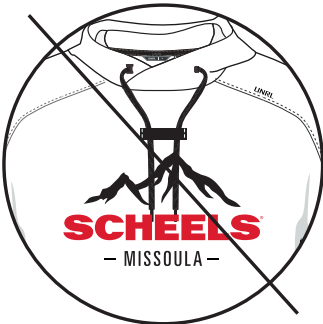


Drawstring Holster  
Left Sleeve

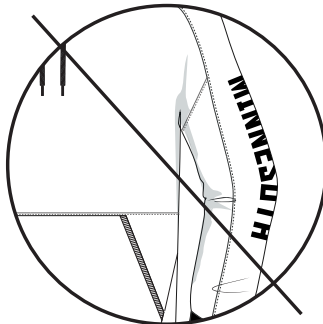


Upper Center Chest  
Left Sleeve

## NOT APPROVED:



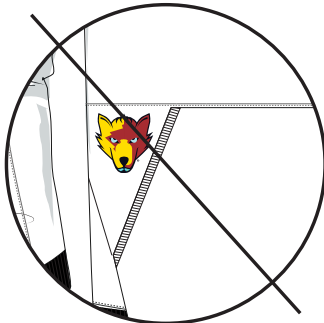
Full Chest



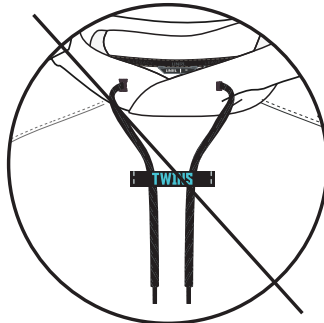
Full Sleeve



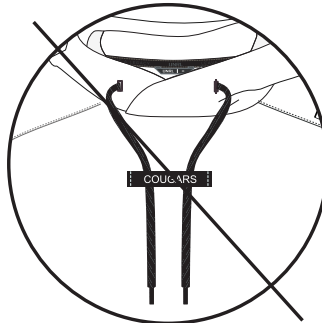
Back Decoration



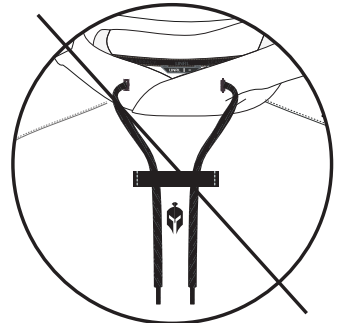
Not Approved  
Decoration Locations



Not Approved  
Silicone Transfer Colors



Stock Font



Min. Dimensions

## DECORATION STANDARDS

# UNRL GOLF DWR TRACK JACKET

### LOGO STANDARDS:

#### LEFT CHEST:

- Small Emblem: MAX: 2.75" W x 1.5" H
- Silicone Transfer ONLY

#### LEFT SLEEVE:

- Small Emblem: MAX: 2.75" W x 1.5" H
- Silicone Transfer SUGGESTED

\*\* If the logo is too detailed to use a silicone transfer, you may use direct embroidery. **Direct embroidery must ONLY be used on the left sleeve**

\*\* Please note direct embroidery will compromise the DWR (Water Resistant) feature of the jacket

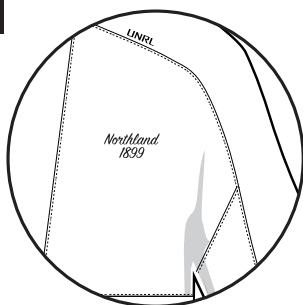
### APPROVED DECORATION MATERIAL:

- + **SILICONE TRANSFER**
- + **DIRECT EMBROIDERY**

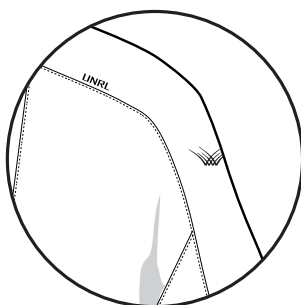
- Tonal Recommended



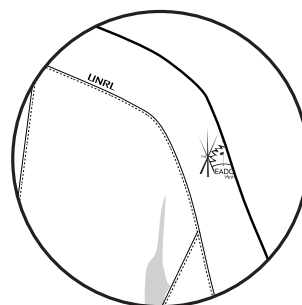
### EXAMPLES:



Left Chest - Silicone Transfer

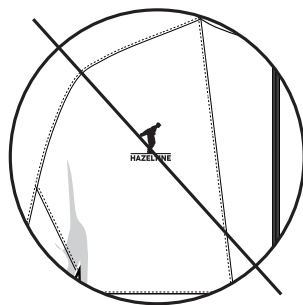


Left Sleeve - Silicone Transfer

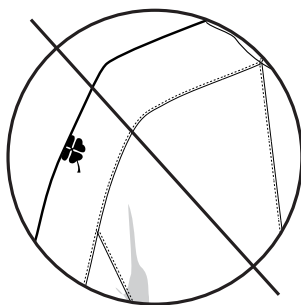


Left Sleeve - Embroidery

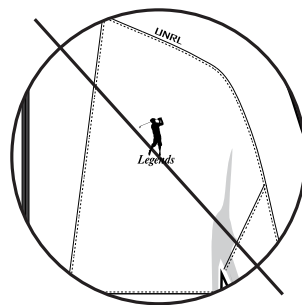
### NOT APPROVED:



Right Chest



Right Sleeve



Embroidery - Left Chest

## DECORATION STANDARDS

# CROSSOVER CREWNECK

### LOGO STANDARDS:

#### LEFT/RIGHT CHEST:

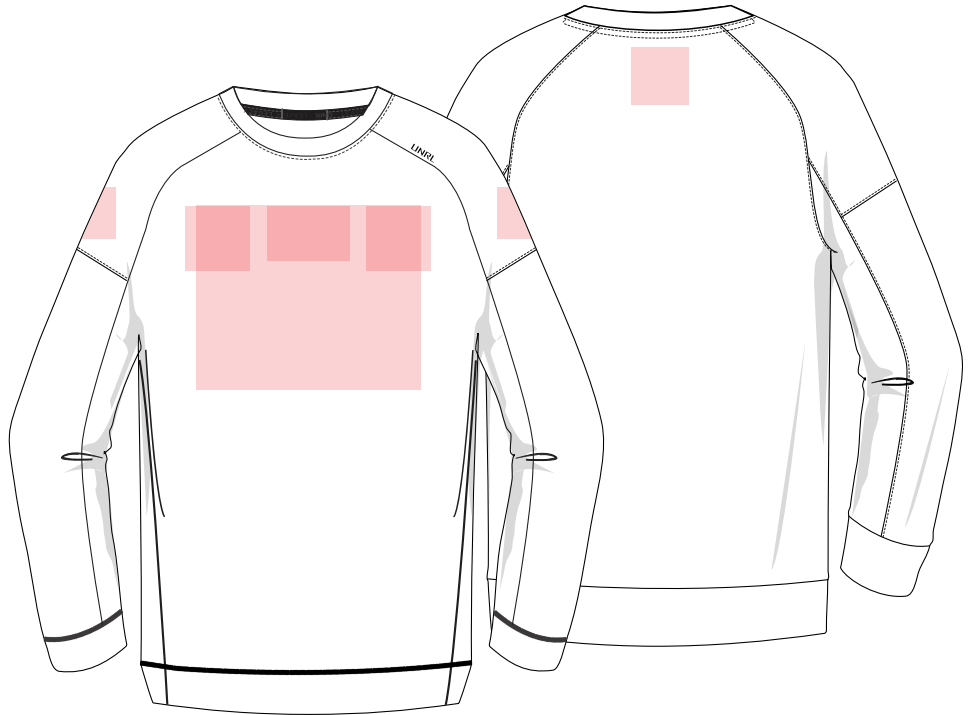
- Small Emblem: 3" W x 3" H
- Direct Embroidery or Custom Patch (Woven)

#### LEFT/RIGHT SLEEVE:

- Small Emblem: 3" W x 3" H
- Direct Embroidery or Custom Patch (Rubber or Woven)

#### CENTER CHEST:

- Small Emblem: 4" W x 3" H
- Direct Embroidery or Custom Patch (Woven)
- Large Emblem: 10" W x 10" H
- Direct Embroidery or Custom Patch (Twill)



### APPROVED DECORATION MATERIAL:

#### + DIRECT EMBROIDERY

#### + 3D EMBROIDERY

- UNRL Varsity Text (Assets in UNRL design folder)

#### + CUSTOM PATCH (RUBBER, WOVEN, LEATHER)

#### + TWILL (SUBLIMATION OR TACKLE)

#### + SCREEN PRINT

- ELT Plastisol Ink only
- Do not exceed 3 colors

#### + SILICONE TRANSFER

- Recommended 1 Color

## DECORATION STANDARDS

# CROSS-UP HOODIE

### LOGO STANDARDS:

#### LEFT/RIGHT CHEST:

- Small Emblem: 3" W x 3" H
- Direct Embroidery or Custom Patch (Woven)

#### LEFT/RIGHT SLEEVE:

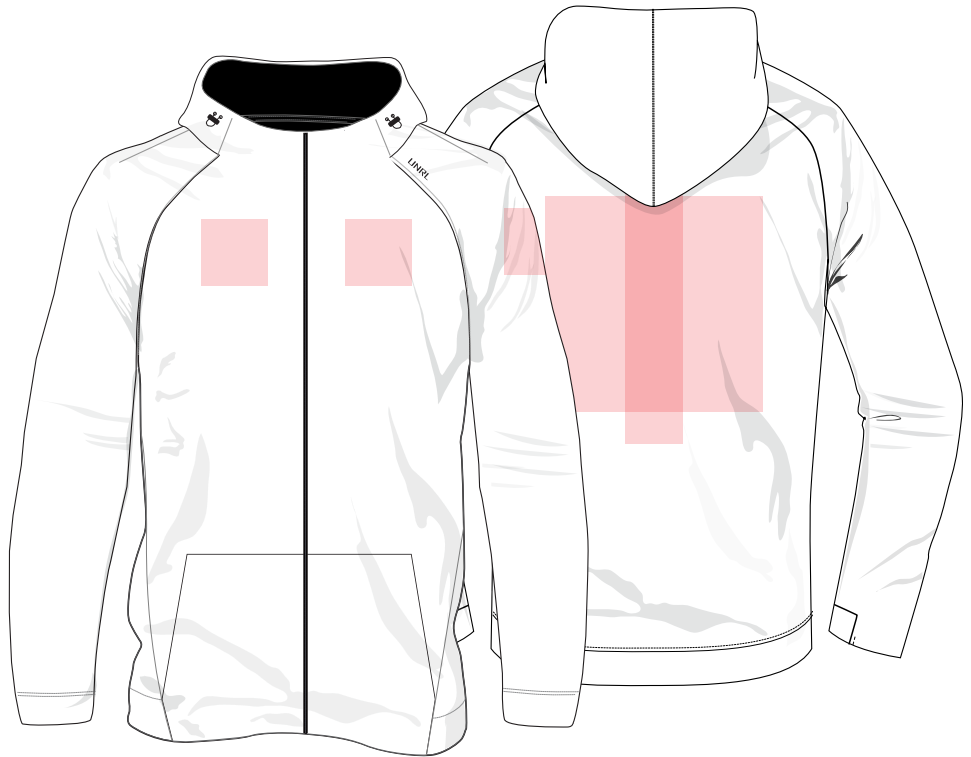
- Small Emblem: 3" W x 3" H
- Direct Embroidery or Custom Patch (Rubber or Woven)

#### FULL BACK:

- Large Emblem: 10" W x 10" H
- Name Height: 2" H
- Number Height: 8" H
- Stock Twill Numbers/Letters

#### SPINE BAR:

- 2" W x 12" H
- Twill Letters or Embroidery



### APPROVED DECORATION MATERIAL:

- + DIRECT EMBROIDERY
- + 3D EMBROIDERY
- + CUSTOM PATCH (RUBBER, WOVEN, LEATHER)
- + TWILL (SUBLIMATION OR TACKLE)
- + SILICONE TRANSFER
- Recommended 1 Color

## DECORATION STANDARDS

# TRANSITION FULL ZIP

### LOGO STANDARDS:

#### LEFT/RIGHT CHEST:

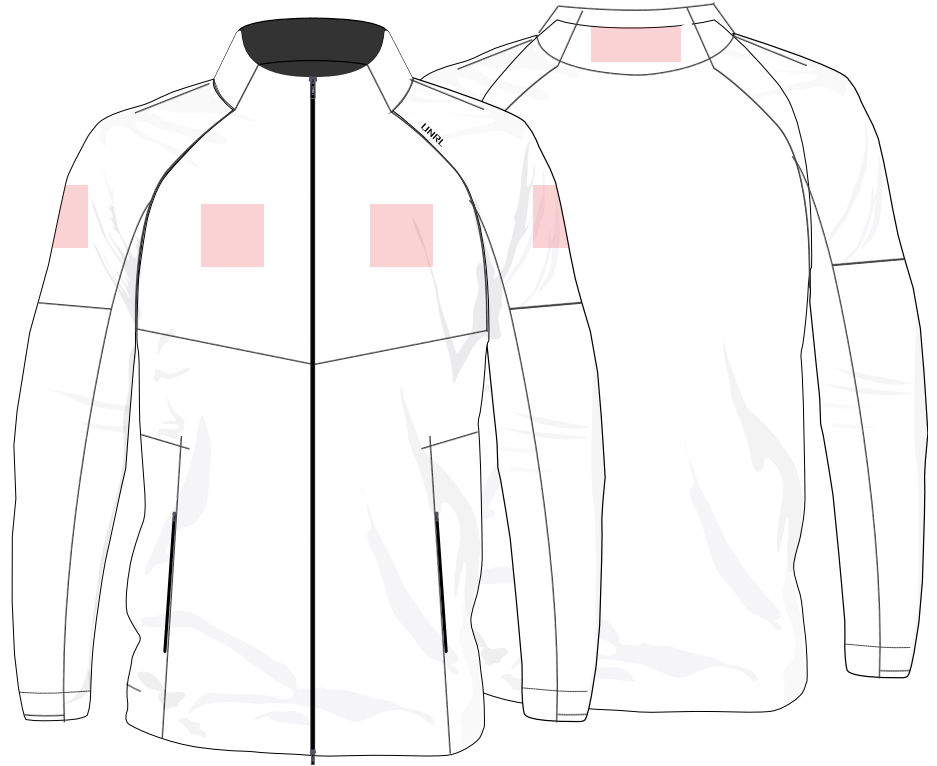
- Small Emblem: 3" W x 3" H
- Direct Embroidery or Custom Patch (Woven)

#### LEFT/RIGHT SLEEVE:

- Small Emblem: 3" W x 3" H
- Direct Embroidery or Custom Patch (Rubber or Woven)

#### BACK NECK:

- Small Emblem: 4" W x 2" H
- Silicone Transfer Only



### APPROVED DECORATION MATERIAL:

- + DIRECT EMBROIDERY
- + 3D EMBROIDERY
- + CUSTOM PATCH (RUBBER, WOVEN, LEATHER)
- + TWILL (SUBLIMATION OR TACKLE)
- + SILICONE TRANSFER
- Recommended 1 Color

## DECORATION STANDARDS

# INTERLOCK QUARTER ZIP

### LOGO STANDARDS:

#### LEFT/RIGHT CHEST:

- Small Emblem: 3" W x 3" H
- Direct Embroidery or Custom Patch (Woven)

#### LEFT/RIGHT SLEEVE:

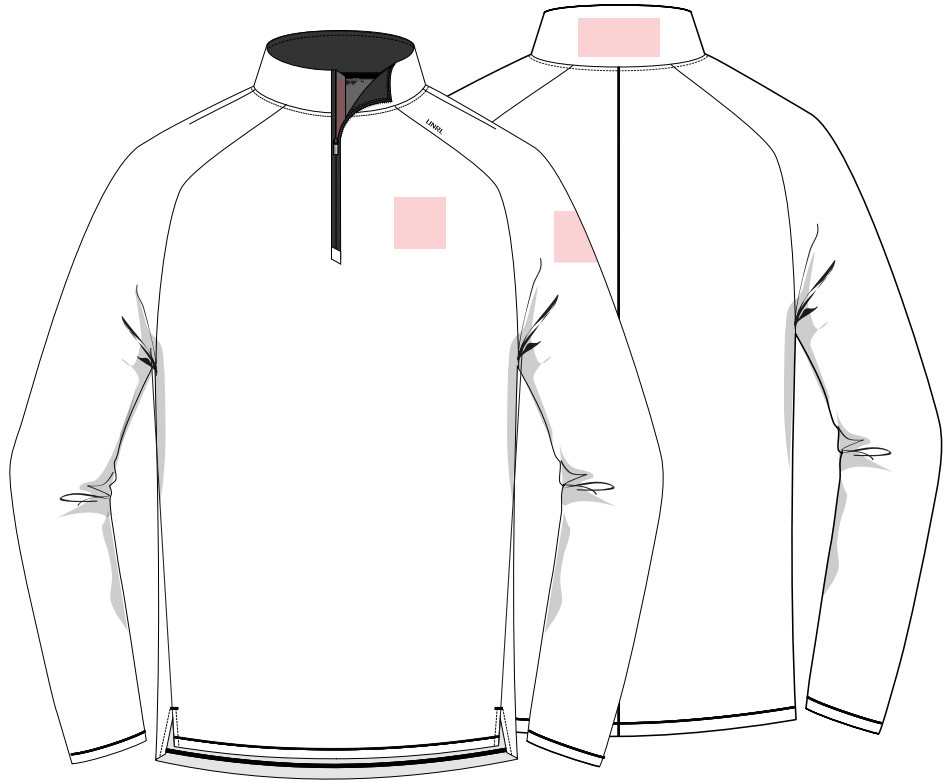
- Small Emblem: 3" W x 3" H
- Direct Embroidery or Custom Patch (Rubber or Woven)

#### ZIPPER PLACKET:

- Small Emblem: 0.4" W x 4" H
- Silicone Transfer Only

#### BACK NECK:

- Small Emblem: 4" W x 2" H
- Silicone Transfer Only



### APPROVED DECORATION MATERIAL:

- + DIRECT EMBROIDERY
- + 3D EMBROIDERY
- + CUSTOM PATCH (RUBBER, WOVEN, LEATHER)
- + TWILL (SUBLIMATION)
- + SILICONE TRANSFER
- Recommended 1 Color

## DECORATION STANDARDS

# HIGHLANDS QUARTER ZIP

### LOGO STANDARDS:

#### LEFT/RIGHT CHEST:

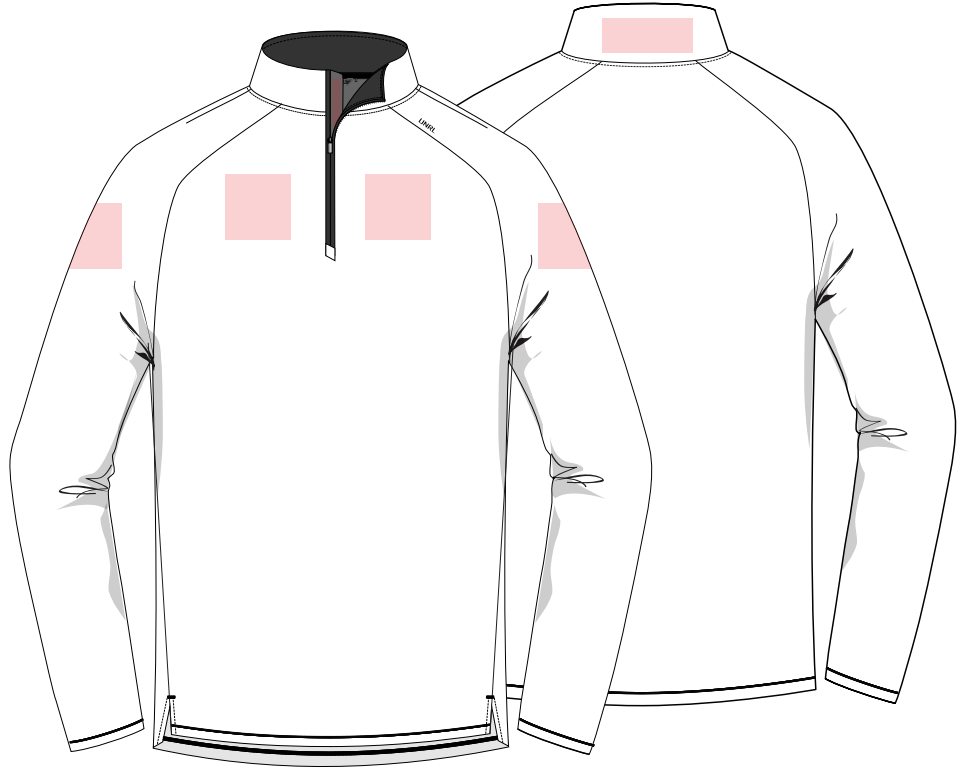
- Small Emblem: 3" W x 3" H
- Direct Embroidery or Custom Patch (Woven)

#### LEFT/RIGHT SLEEVE:

- Small Emblem: 3" W x 3" H
- Direct Embroidery or Custom Patch (Rubber or Woven)

#### BACK NECK:

- Small Emblem: 4" W x 2" H
- Silicone Transfer Only



### APPROVED DECORATION MATERIAL:

#### + DIRECT EMBROIDERY

- White colorway backing shows through - trim/tear away the backing as close to the logo as possible

#### + CUSTOM PATCH (RUBBER, WOVEN, LEATHER)

#### + SILICONE TRANSFER

- Recommended for white colorway

## DECORATION STANDARDS

# ULTRA TEE // LONG SLEEVE

### LOGO STANDARDS:

#### LEFT/RIGHT CHEST:

- Small Emblem: 3" W x 3" H

#### LEFT/RIGHT SLEEVE:

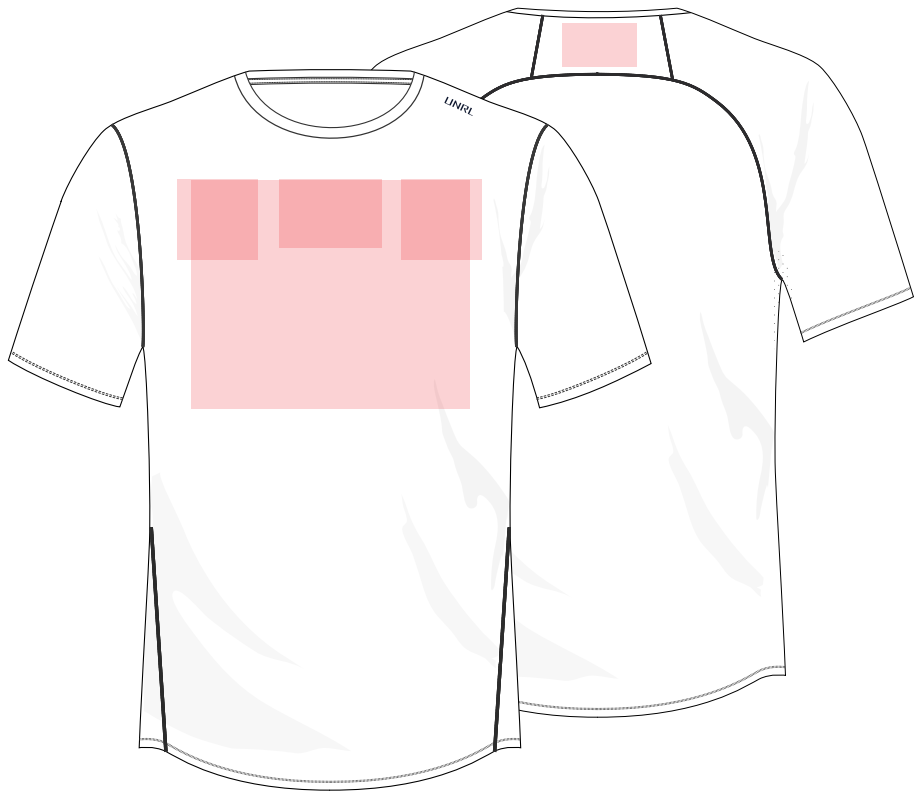
- Small Emblem: 3" W x 3" H

#### CENTER CHEST:

- Small Emblem: 4" W x 3" H
- Large Emblem: 10" W x 10" H

#### BACK NECK:

- Small Emblem: 3" W x 2" H



### APPROVED DECORATION MATERIAL:

- + SILICONE TRANSFER
- + SCREEN PRINT

## DECORATION STANDARDS

# STRIDE SHORT SLEEVE // LONG SLEEVE

### LOGO STANDARDS:

#### LEFT/RIGHT CHEST:

- Small Emblem: 3" W x 3" H

#### LEFT/RIGHT SLEEVE:

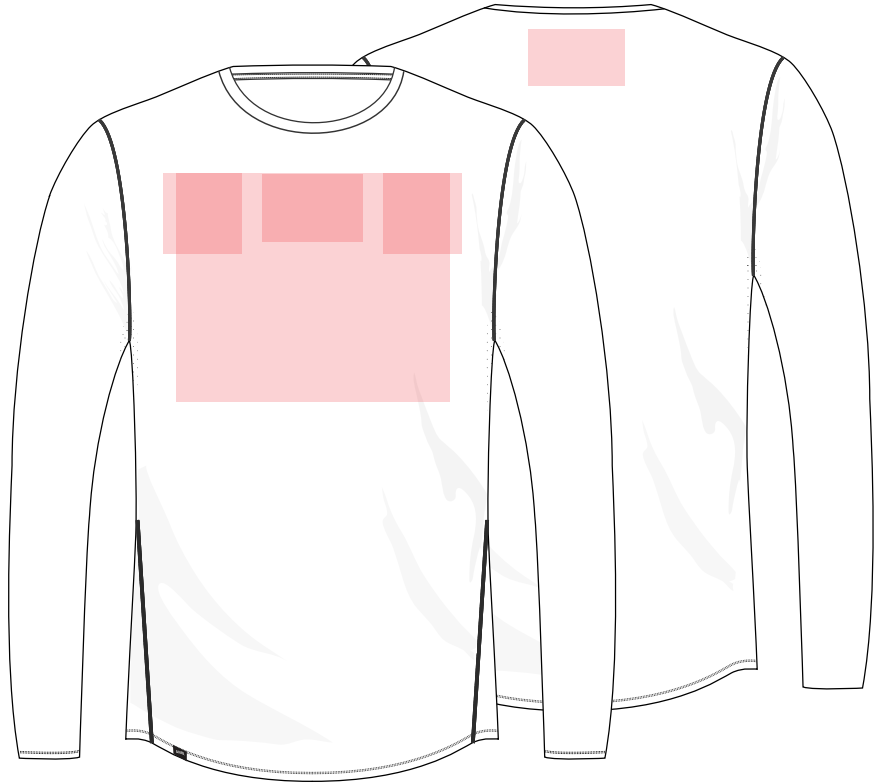
- Small Emblem: 3" W x 3" H

#### CENTER CHEST:

- Small Emblem: 4" W x 3" H
- Large Emblem: 10" W x 10" H

#### BACK NECK:

- Small Emblem: 4" W x 3" H



### APPROVED DECORATION MATERIAL:

- + SILICONE TRANSFER
- + SCREEN PRINT

## DECORATION STANDARDS

# LEGEND POLO

### LOGO STANDARDS:

#### LEFT/RIGHT CHEST:

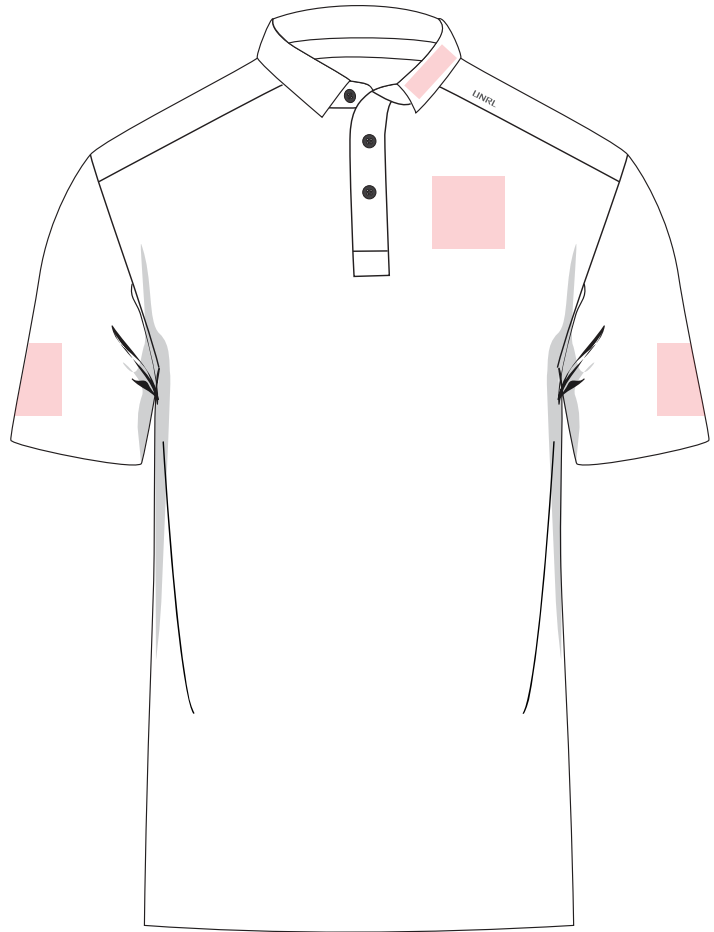
- Square Logo: 2" W x 2" H
- Rectangle Logo: 3" W x 1" H

#### LEFT/RIGHT SLEEVE:

- Square Logo: 2" W x 2" H
- Rectangle Logo: 3" W x 1" H

#### LEFT COLLAR:

- Number/Small Emblem: 1.5" W x 2.5" H
- Silicone Transfer Only



### APPROVED DECORATION MATERIAL:

- + DIRECT EMBROIDERY
- + SILICONE TRANSFER

## DECORATION STANDARDS

# TRADITION POLO

### LOGO STANDARDS:

#### LEFT/RIGHT CHEST:

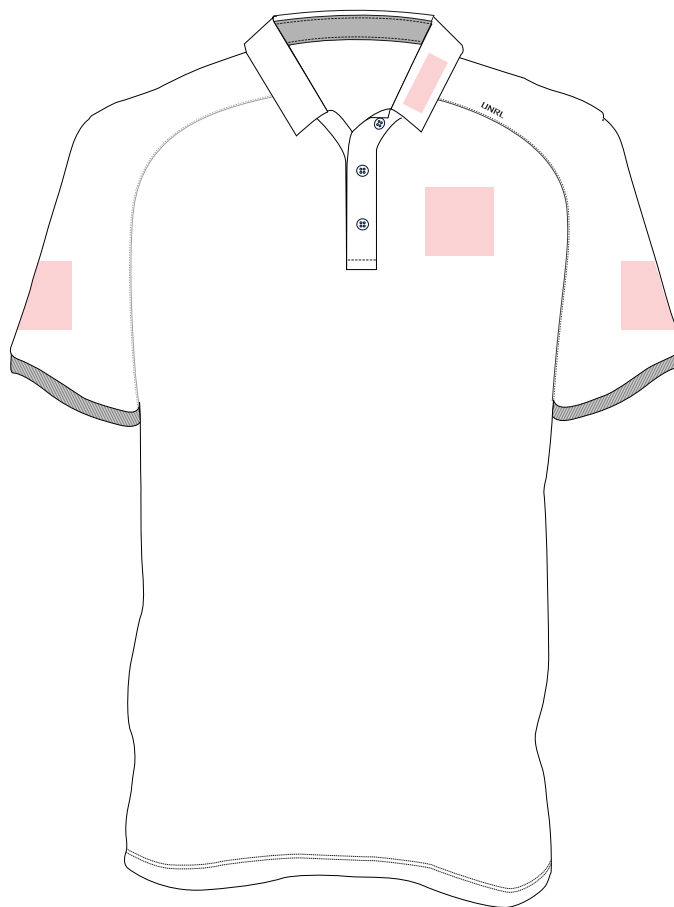
- Square Logo: 2" W x 2" H
- Rectangle Logo: 3" W x 1" H

#### LEFT/RIGHT SLEEVE:

- Square Logo: 2" W x 2" H
- Rectangle Logo: 3" W x 1" H

#### LEFT COLLAR:

- Number/Small Emblem: 1.5" W x 2.5" H
- Silicone Transfer Only



### APPROVED DECORATION MATERIAL:

- + DIRECT EMBROIDERY
- + SILICONE TRANSFER
- + SCREEN PRINT

## DECORATION STANDARDS

# PRINTED POLO

### LOGO STANDARDS:

#### LEFT/RIGHT CHEST:

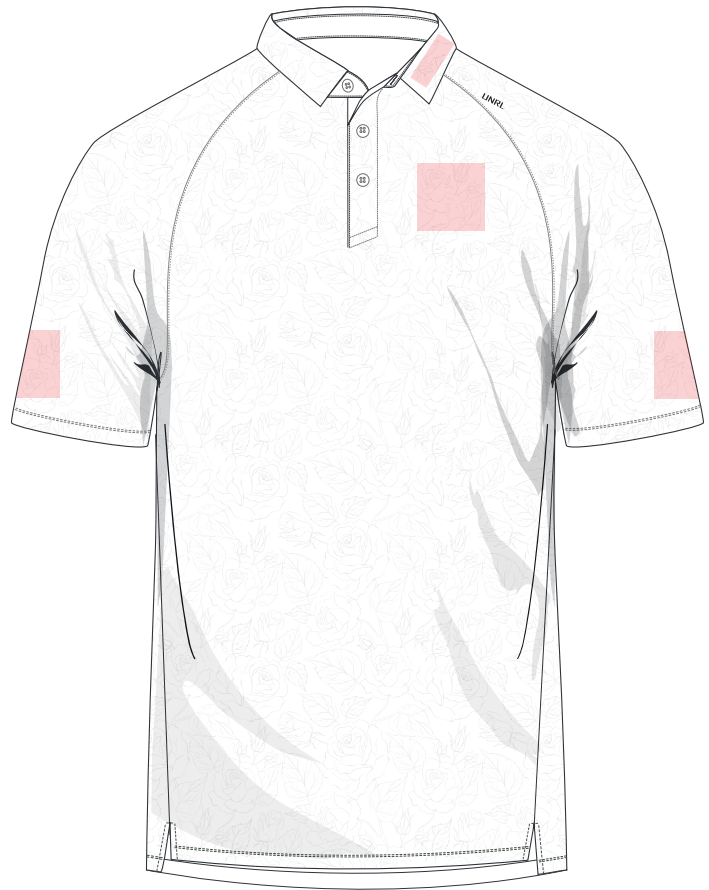
- Square Logo: 2" W x 2" H
- Rectangle Logo: 3" W x 1" H

#### LEFT/RIGHT SLEEVE:

- Square Logo: 2" W x 2" H
- Rectangle Logo: 3" W x 1" H

#### LEFT COLLAR:

- Number/Small Emblem: 1.5" W x 2.5" H
- Silicone Transfer Only



### APPROVED DECORATION MATERIAL:

#### + DIRECT EMBROIDERY

- Not approved for the Catamaran Printed Polo (Silicone Transfer Only)

#### + SILICONE TRANSFER

## DECORATION STANDARDS

# APEX JACKET

### LOGO STANDARDS:

#### LEFT/RIGHT CHEST:

- Small Emblem: 3" W x 3" H
- Direct Embroidery or Custom Patch (Woven)

#### LEFT/RIGHT SLEEVE:

- Small Emblem: 3" W x 3" H
- Direct Embroidery or Custom Patch (Rubber or Woven)

#### HOOD:

- Number/Small Emblem: 2.5" W x 2.5" H



### APPROVED DECORATION MATERIAL:

- + DIRECT EMBROIDERY
- + CUSTOM PATCH (RUBBER OR WOVEN)
- + TWILL (SUBLIMATION OR TACKLE)
- + SILICONE TRANSFER
- Recommended 1 Color

## DECORATION STANDARDS

# UNRL PERFORMANCE PANT (APEX)

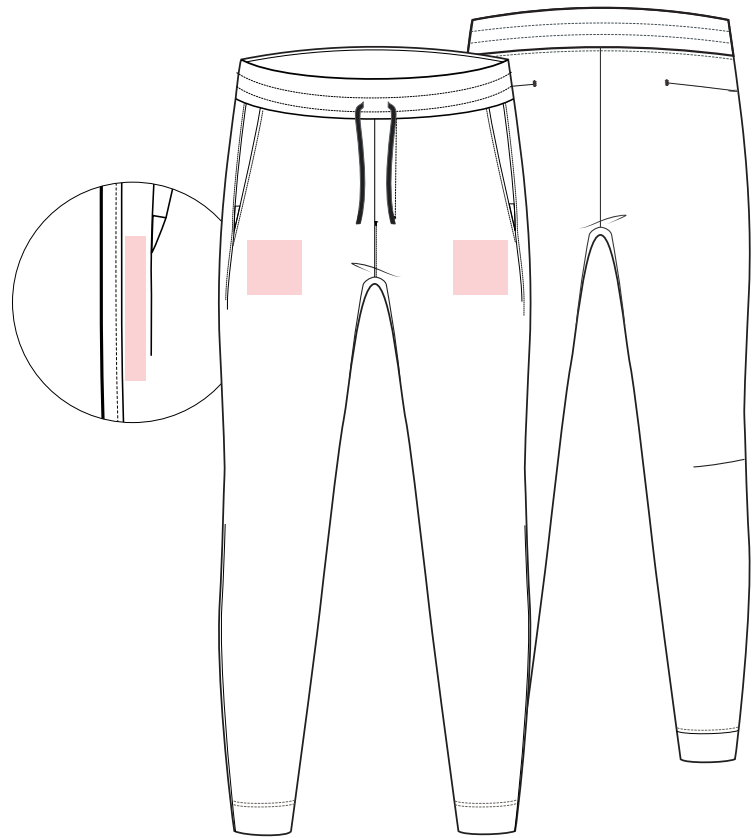
### LOGO STANDARDS:

#### LEFT/RIGHT THIGH:

- Small Emblem: 3" W x 3" H
- Direct Embroidery or Custom Patch (Rubber or Woven)

#### SIDE SEAM:

- 0.5" W x 4" H
- Silicone Transfer Only



### APPROVED DECORATION MATERIAL:

- + DIRECT EMBROIDERY
- + CUSTOM PATCH (RUBBER OR WOVEN)
- + SILICONE TRANSFER
- 1 Color only

## DECORATION STANDARDS

# HIGH STREET JOGGER

### LOGO STANDARDS:

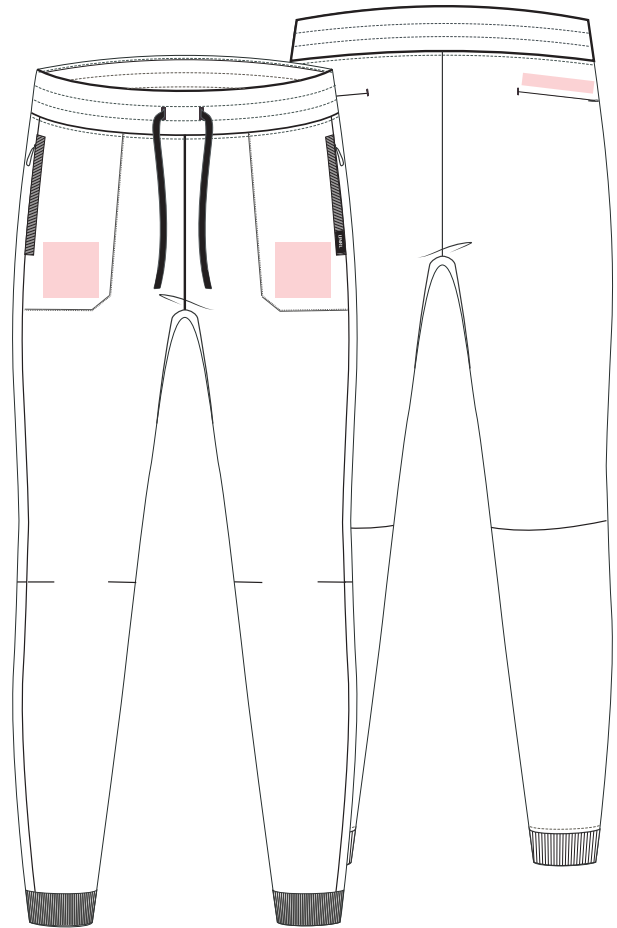
#### LEFT/RIGHT THIGH:

- Small Emblem: 3" W x 3" H
- Direct Embroidery or Custom Patch (Rubber or Woven)

#### BACK POCKET:

- 0.5" W x 4" H
- Silicone Transfers Only

\*\* Recommended to use the same logo from the High Street Hoodie in 3D embroidery



### APPROVED DECORATION MATERIAL:

- + CUSTOM PATCH (HEAT PRESS APPLICATION)
- + SILICONE TRANSFER

- 1 Color Only

## DECORATION STANDARDS

# STRIDE SHORT

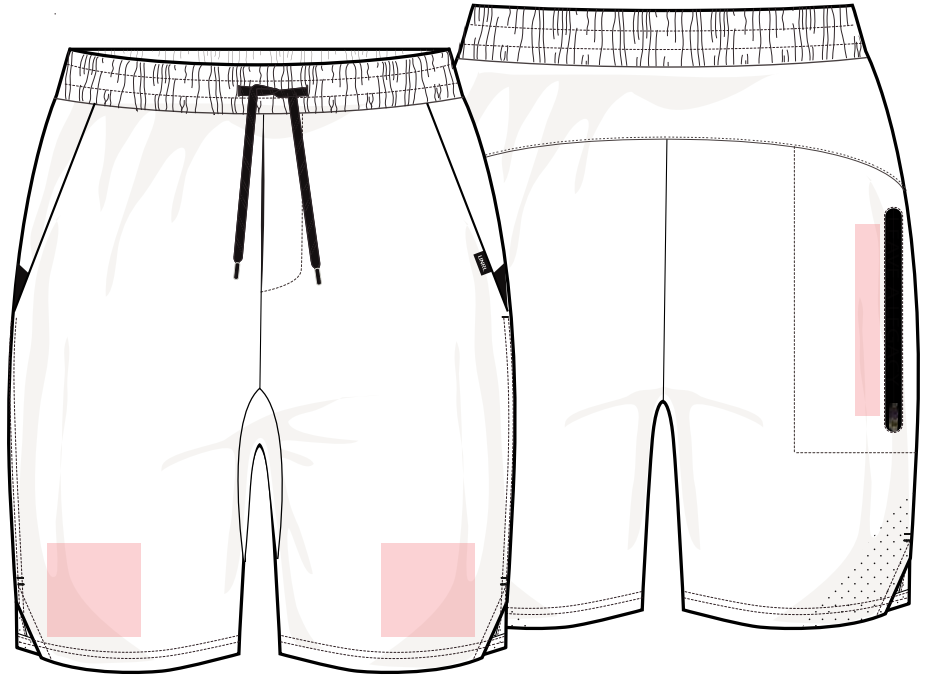
### LOGO STANDARDS:

#### LEFT/RIGHT THIGH:

- Small Emblem: 3" W x 3" H

#### SIDE POCKET:

- Wordmark: 0.5" W x 4" H



### APPROVED DECORATION MATERIAL:

- + SILICONE TRANSFER
- + SCREEN PRINT

## DECORATION STANDARDS

# SLOUCH BEANIE

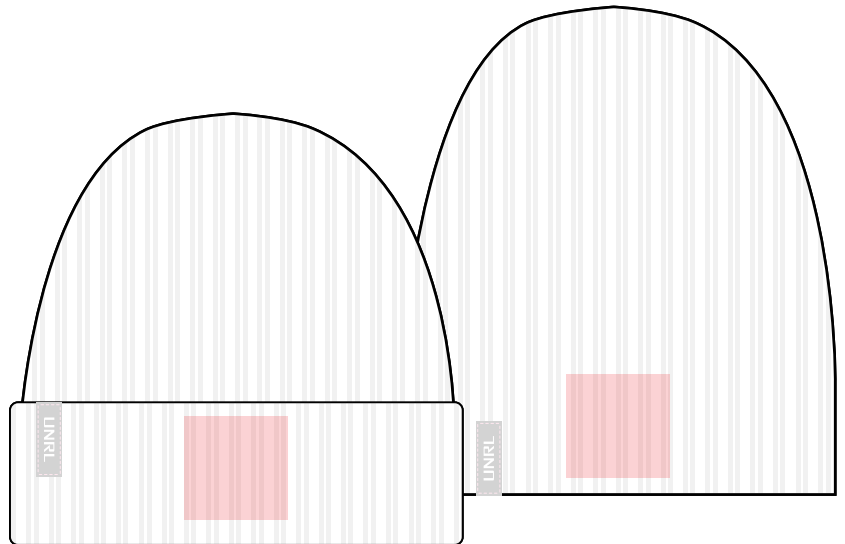
### LOGO STANDARDS:

#### FRONT CENTER

- Small Emblem: 3" W x 3" H
- 3D/Direct Embroidery or Custom Patch  
(Leather, Rubber, Woven)

\*\* The customer must choose one way they want to wear the beanie. Once it is decorated, it cannot be worn both ways.

\*\* Only one logo is permitted on this product



### APPROVED DECORATION MATERIAL:

- + DIRECT EMBROIDERY
- + 3D EMBROIDERY
- + CUSTOM PATCH (RUBBER, WOVEN, LEATHER)

## DECORATION STANDARDS

# ELITE WINTER KNIT

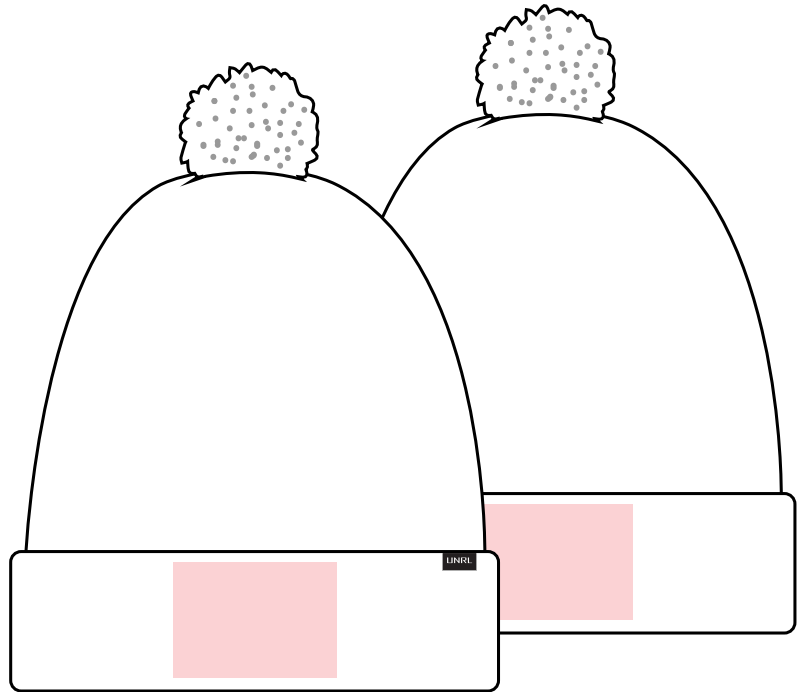
### LOGO STANDARDS:

#### FRONT CENTER

- Small Emblem: 3" W x 2" H
- 3D/Direct Embroidery or Custom Patch (Rubber, Woven)

#### BACK CENTER

- Small Emblem: 3" W x 2" H
- 3D/Direct Embroidery or Custom Patch (Rubber, Woven)
- Number: 2" H



### APPROVED DECORATION MATERIAL:

- + DIRECT EMBROIDERY
- + 3D EMBROIDERY
- + CUSTOM PATCH (RUBBER OR WOVEN)

## DECORATION STANDARDS

# UNRL GOLF VINTAGE ROPE SNAPBACK [MID-PRO]

### LOGO STANDARDS:

#### LEFT/RIGHT SIDE PANEL:

- Small Emblem: 3" W x 2" H
- Direct Embroidery Recommended



### APPROVED DECORATION MATERIAL:

- + DIRECT EMBROIDERY
- + SILICONE TRANSFER

## DECORATION STANDARDS

# MID-PRO VENTED/VENTED ROPE SNAPBACK

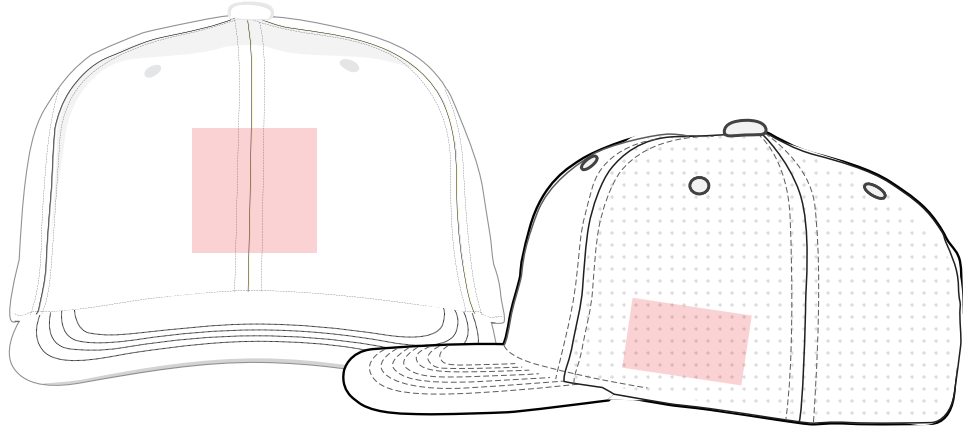
### LOGO STANDARDS:

#### FRONT CROWN:

- Small Emblem: 4" W x 2.25" H
- **Custom Patch Only**

#### LEFT/RIGHT SIDE PANEL:

- Small Emblem: 3" W x 2" H
- Direct Embroidery or Silicone Transfer



### APPROVED DECORATION MATERIAL:

- + **DIRECT EMBROIDERY**
- + **CUSTOM PATCH (RUBBER, WOVEN, LEATHER)**

\*\* Our most recent shipment has a stiff buckram making it very difficult to decoration with direct embroidery or 3D embroidery. Until this problem has been resolved, we ask that this style of headwear is decorated with a custom patch only.

## DECORATION STANDARDS

# MID-PRO TRUCKER SNAPBACK

### LOGO STANDARDS:

#### FRONT CROWN:

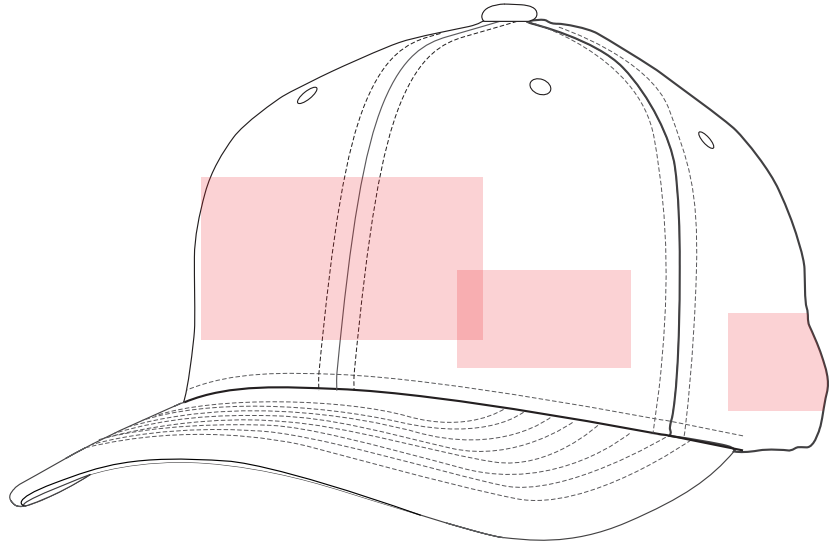
- Small Emblem: 4" W x 2.25" H
- 3D/Direct Embroidery or Custom Patch (Leather, Rubber, Woven)

#### LEFT CROWN PANEL:

- Small Emblem: 2.75" W x 2" H
- Direct Embroidery Recommended

#### LEFT/RIGHT PANEL:

- Small Emblem: 3" W x 2" H
- Direct Embroidery Recommended



### APPROVED DECORATION MATERIAL:

- + DIRECT EMBROIDERY
- + 3D EMBROIDERY
- + CUSTOM PATCH (RUBBER, WOVEN, LEATHER)

## DECORATION STANDARDS

# FLOP FIT PERFORMANCE STRAPBACK

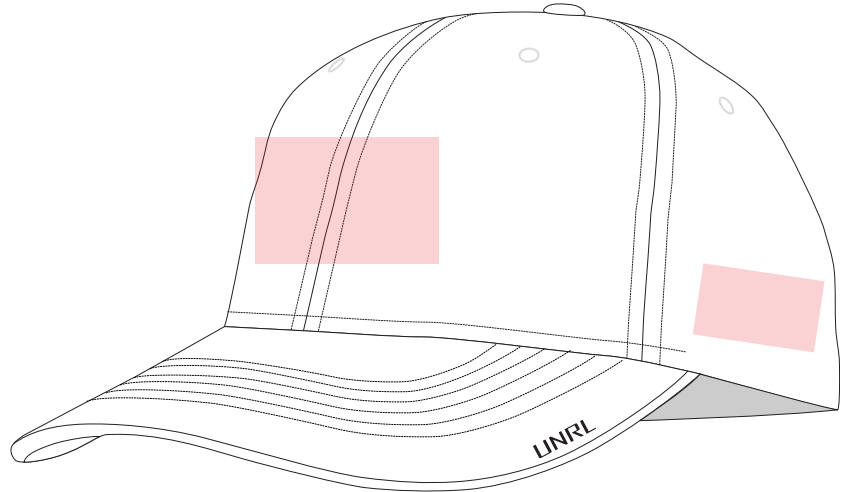
### LOGO STANDARDS:

#### FRONT CROWN:

- Small Emblem: 3" W x 2" H
- 3D/Direct Embroidery or Custom Patch  
(Leather, Rubber, Woven)

#### LEFT/RIGHT SIDE PANEL:

- Small Emblem: 3" W x 2" H
- Direct Embroidery Recommended



### APPROVED DECORATION MATERIAL:

- + DIRECT EMBROIDERY
- + 3D EMBROIDERY
- + CUSTOM PATCH (RUBBER, WOVEN, LEATHER)
- + SILICONE TRANSFER

## DECORATION STANDARDS

# TRAIN X TRAVEL BACKPACK

### LOGO STANDARDS:

#### LEFT PANEL:

- Small Emblem: 3" W x 3" H

\*\* Only one logo permitted on this product



### APPROVED DECORATION MATERIAL:

- + DIRECT EMBROIDERY
- + 3D EMBROIDERY
- + CUSTOM PATCH (RUBBER OR WOVEN)

**NO SILICONE TRANSFERS**

# UNRL PRO STOCK COLLECTION (WOMEN'S)

---

**Pre-book and in-season inventory items.**

**Our vision is to create an authentic collaboration with UNRL as you enhance our products for your clients. Adhere to these guidelines, ensuring your final products embody the essence of our brand.**

## DECORATION STANDARDS

# JETSET BOMBER JACKET

### MAX DIMENSIONS:

#### LEFT CHEST:

- Small Emblem: 3" W x 3" H
- Direct Embroidery or Custom Patch (Woven)



### APPROVED DECORATION MATERIAL:

- + DIRECT EMBROIDERY
- + CUSTOM PATCH (RUBBER, WOVEN, LEATHER)

## DECORATION STANDARDS

# LUXBREAK OVERSIZED HOODIE

### MAX DIMENSIONS:

#### LEFT/RIGHT CHEST:

- Small Emblem: 3" W x 3" H
- Direct/3D Embroidery

#### CENTER CHEST:

- Medium Emblem: 5" W x 3" H
- Direct Embroidery or Custom Patch (Woven)



### APPROVED DECORATION MATERIAL:

- + DIRECT EMBROIDERY
- + 3D EMBROIDERY
- + CUSTOM PATCH (RUBBER, WOVEN, LEATHER)
- + SILICONE TRANSFER

- Recommended 1 Color

## DECORATION STANDARDS

# LUXBREAK HALF-ZIP PULLOVER

### MAX DIMENSIONS:

#### LEFT SLEEVE:

- Small Emblem: 3" W x 3" H
- Direct Embroidery or Custom Patch (Rubber or Woven)

#### LEFT/RIGHT CHEST:

- Small Emblem: 3" W x 3" H
- Direct/3D Embroidery

\*\* Left chest not recommended for wordmark logos - this location is reserved for icon logos



### APPROVED DECORATION MATERIAL:

- + DIRECT EMBROIDERY
- + CUSTOM PATCH (RUBBER, WOVEN, LEATHER)
- + SILICONE TRANSFER
- Recommended 1 Color

## DECORATION STANDARDS

# PERFORMA FITTED TANK

### MAX DIMENSIONS:

#### CENTER CHEST:

- Small Emblem: 3" W x 3" H
- Silicone Transfer

#### BACK NECK:

- Small Emblem: 3" W x 3" H
- Number
- Silicone Transfer



### APPROVED DECORATION MATERIAL:

#### + SILICONE TRANSFER

- 1 Color ONLY (Black)

\*\* Small emblems must maintain a line thickness of at least 1/16" for lettering & logos

## DECORATION STANDARDS

# PERFORMA LONGLINE BRA

### MAX DIMENSIONS:

#### CENTER CHEST:

- Small Emblem: 3" W x 3" H
- Silicone Transfer

#### BACK NECK:

- Small Emblem: 3" W x 3" H
- Number
- Silicone Transfer



### APPROVED DECORATION MATERIAL:

#### + SILICONE TRANSFER

- 1 Color ONLY (Black)

\*\* Small emblems must maintain a line thickness of at least 1/16" for lettering & logos

---

# UNRL SUBLIMATED COLLECTION

## CUSTOM MADE-TO-ORDER SUBLIMATION ITEMS

- + 30 day turnaround
- + Receive finished product - no additional decoration necessary
- + 100+ templates available to customize

# SILKSERIES HOODIE II

- + EXTREMELY STRETCHY EXTERIOR
- + BRUSHED FLEECE INTERIOR
- + FUSED DYE: NEVER FADE PRINT
- + MICRO-MESH HOOD LINER
- + AVAILABLE IN A LITE 1 LAYER FABRIC



**SIZES AVAILABLE:**  
**YS-YL**  
**XS-5XL**



TEMPLATE 02



TEMPLATE 03



TEMPLATE 04



TEMPLATE 05



TEMPLATE 06



TEMPLATE 07



TEMPLATE 08



TEMPLATE 09



TEMPLATE 10

**Dealers are entrusted with independently creating templates for all sublimated products. To gain access to our comprehensive design assets, kindly reach out to your dedicated account manager. Should any questions arise during the design process, we encourage you to reach out to your account manager, who will connect you with a member of our design team to provide assistance.**

# SPORT LONG SLEEVE

- + EXTREMELY STRETCHY EXTERIOR
- + FUSED DYE: NEVER FADE PRINT
- + FITTED WORKOUT LONG SLEEVE
- + PERFORMANCE MOISTURE WICKING FABRICS
- + COVER STITCHED SEAMS



---

**SIZES AVAILABLE:**  
**YS-YL**  
**XS-5XL**



TEMPLATE 01



TEMPLATE 02



TEMPLATE 03



TEMPLATE 04



TEMPLATE 05



TEMPLATE 06



TEMPLATE 07



TEMPLATE 08



TEMPLATE 09

**Dealers are entrusted with independently creating templates for all sublimated products. To gain access to our comprehensive design assets, kindly reach out to your dedicated account manager. Should any questions arise during the design process, we encourage you to reach out to your account manager, who will connect you with a member of our design team to provide assistance.**

# SPORT SHORT SLEEVE

- + EXTREMELY STRETCHY EXTERIOR
- + FUSED DYE: NEVER FADE PRINT
- + FITTED WORKOUT SHORT SLEEVE
- + PERFORMANCE MOISTURE WICKING FABRICS
- + COVER STITCHED SEAMS



---

**SIZES AVAILABLE:**  
**YS-YL**  
**XS-5XL**

TEMPLATE 01



TEMPLATE 02



TEMPLATE 03



TEMPLATE 04



TEMPLATE 05



TEMPLATE 06



TEMPLATE 07



TEMPLATE 08



TEMPLATE 09



**Dealers are entrusted with independently creating templates for all sublimated products. To gain access to our comprehensive design assets, kindly reach out to your dedicated account manager. Should any questions arise during the design process, we encourage you to reach out to your account manager, who will connect you with a member of our design team to provide assistance.**

# TRAINING SHORTS

- + PERFORMANCE TRAINING SHORTS
- + PREMIUM LIGHTWEIGHT MATERIALS
- + MICRO-PERFORATION FOR BREATHABILITY
- + INTERIOR POCKET
- + 8" IN-SEAM - ADULT



---

**SIZES AVAILABLE:**  
**YS-YL**  
**XS-5XL**

TEMPLATE 01



TEMPLATE 02



TEMPLATE 03



TEMPLATE 04



TEMPLATE 05



TEMPLATE 06



TEMPLATE 07



TEMPLATE 08



TEMPLATE 09



**Dealers are entrusted with independently creating templates for all sublimated products. To gain access to our comprehensive design assets, kindly reach out to your dedicated account manager. Should any questions arise during the design process, we encourage you to reach out to your account manager, who will connect you with a member of our design team to provide assistance.**

# HOCKEY JERSEY

- + GAME-WEIGHT DURABLE PERFORMANCE MATERIALS
- + MID TO HEAVY WEIGHT: 4 WAY STRETCH
- + REINFORCED SHOULDER AND ELBOW PANELS
- + MICRO-MESH ARMPIT GUSSETS FOR BREATHABILITY
- + PRO STYLE NOTCHED COLLAR
- + SUBLIMATION PRINTED DESIGN



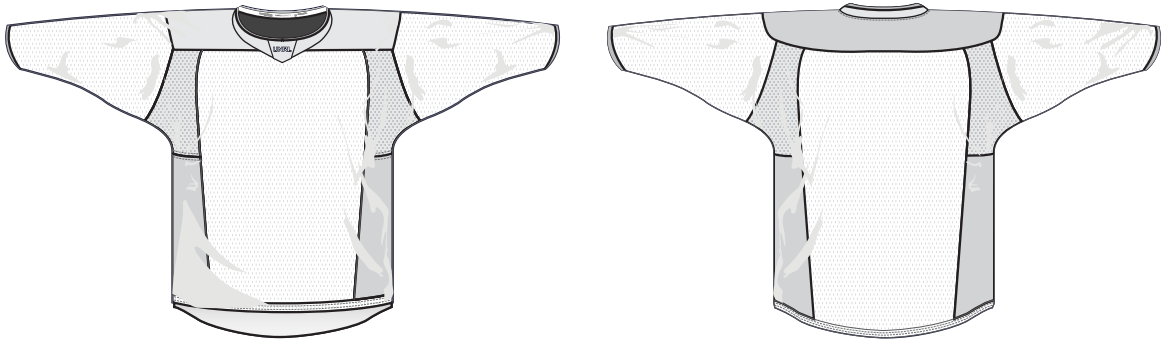
---

**SIZES AVAILABLE:**  
**YOUTH: YS, YM, YL/YXL**  
**ADULT: S-2XL**

# STEP 1: SELECT YOUR STYLE

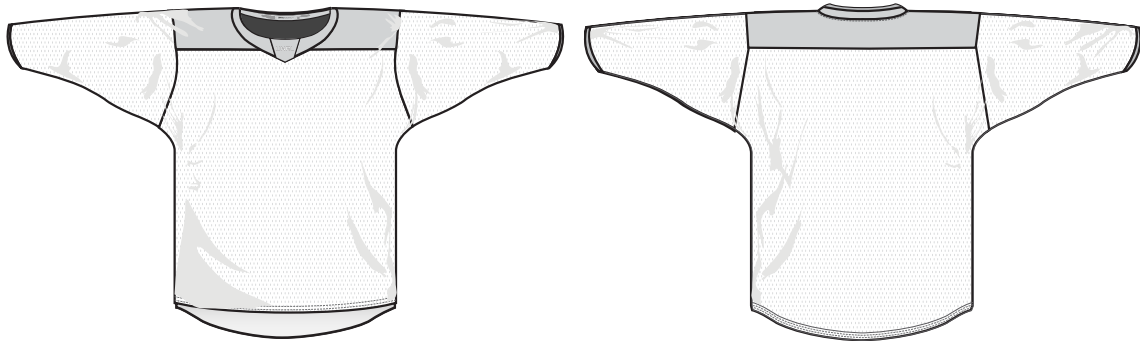
## STYLE #1: BOX LACROSSE FRANCHISE JERSEY

11 PANELS | 4 FABRICS



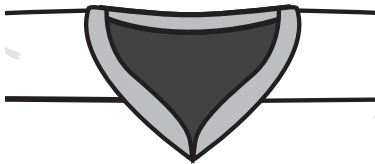
## STYLE #2: BOX LACROSSE MAINSTREAM JERSEY

5 PANELS | 2 FABRICS



# STEP 2: SELECT YOUR COLLAR

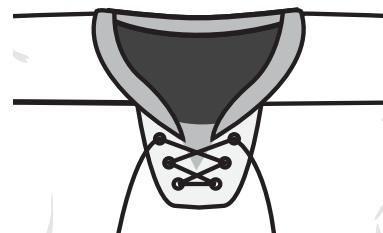
STANDARD V



BLADE



LACE UP



NOTCH



## STEP 3: SELECT YOUR TEMPLATE

TEMPLATE 02



TEMPLATE 03



TEMPLATE 04



TEMPLATE 05



TEMPLATE 06



TEMPLATE 07





TEMPLATE 08

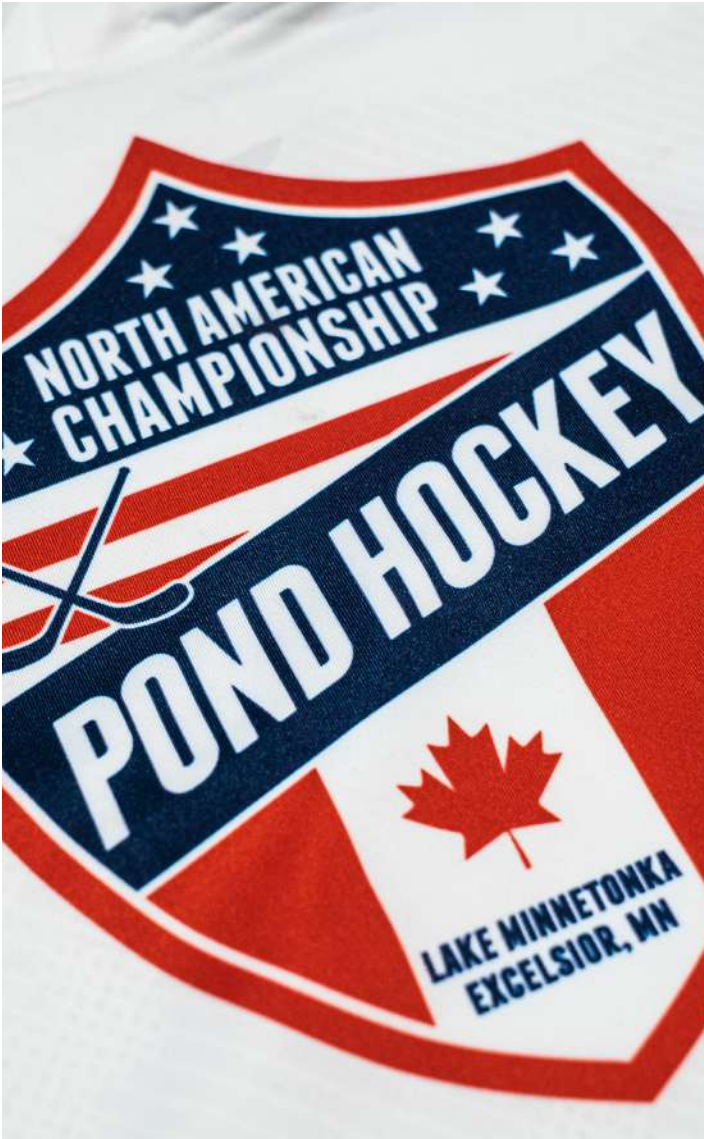


TEMPLATE 09

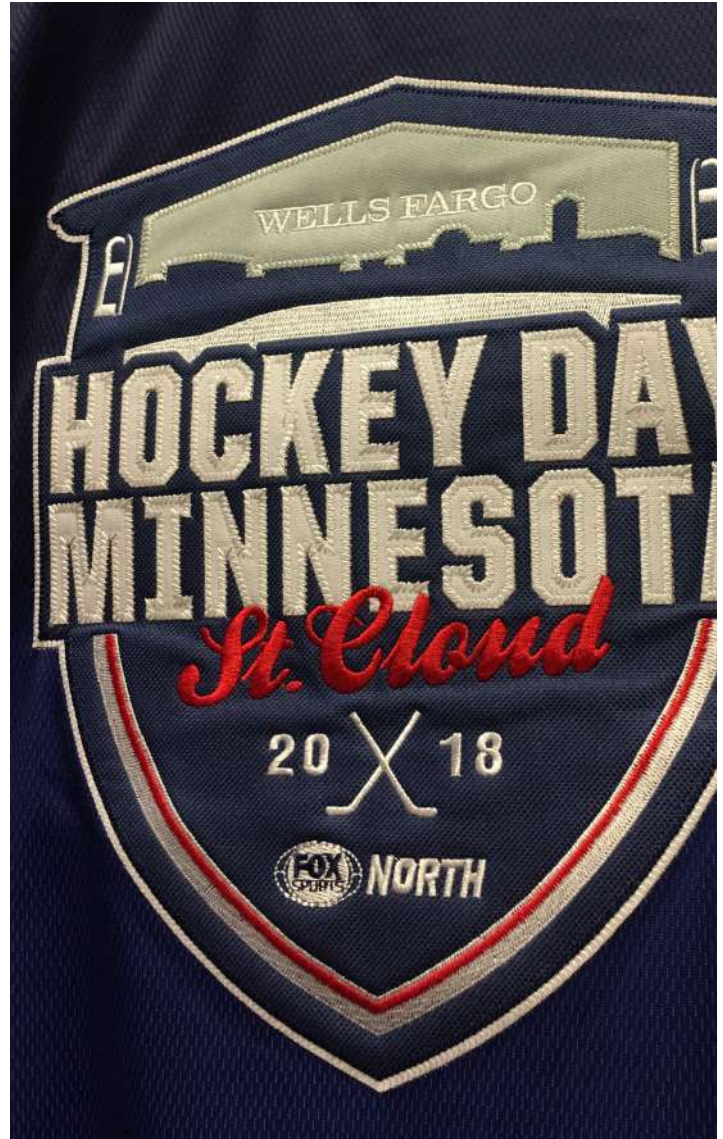


TEMPLATE 10

## STEP 4: SELECT YOUR FINISHING STYLE



DYE SUBLIMATION

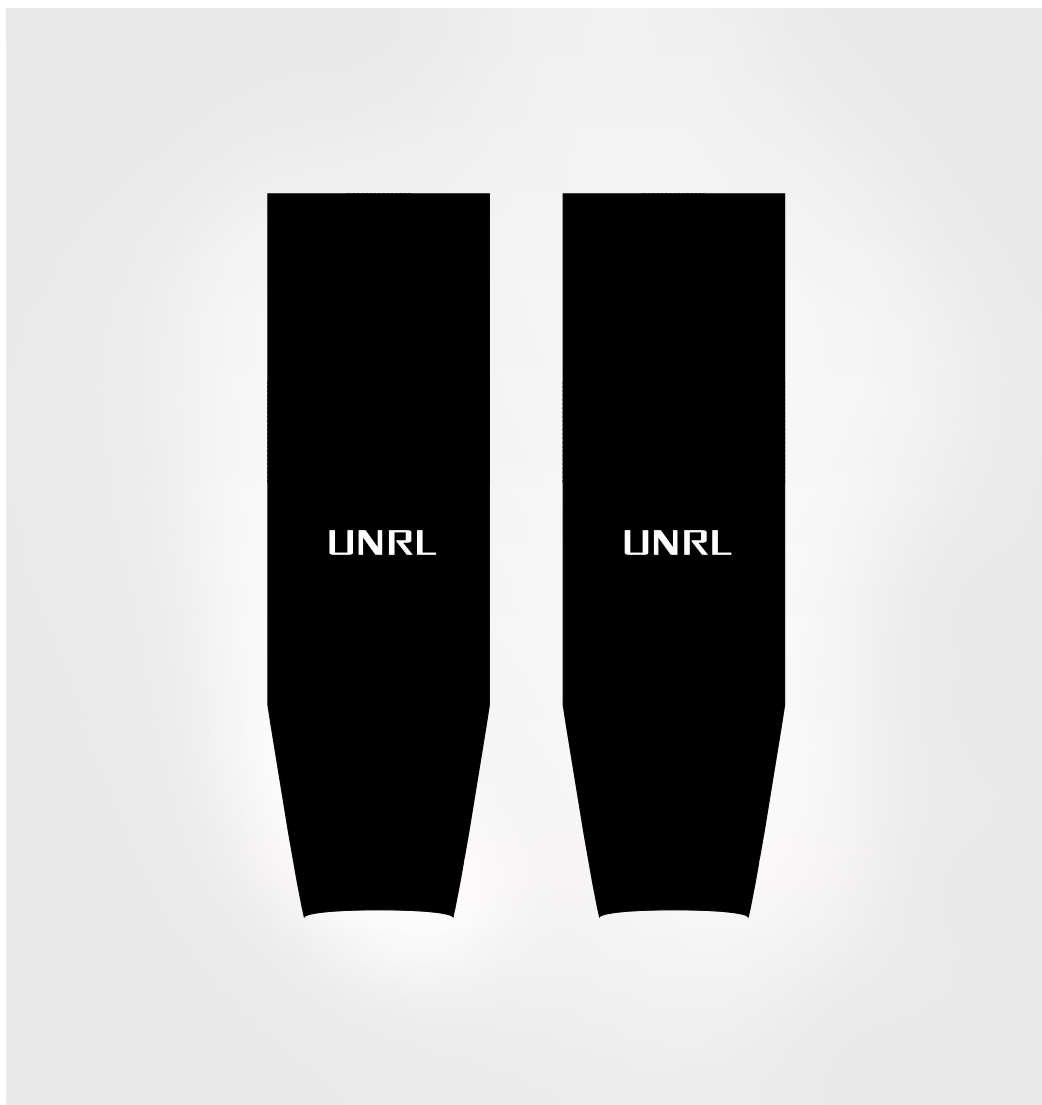


DYE SUBLIMATION  
+ TWILL

**Dealers are entrusted with independently creating templates for all sublimated products. To gain access to our comprehensive design assets, kindly reach out to your dedicated account manager. Should any questions arise during the design process, we encourage you to reach out to your account manager, who will connect you with a member of our design team to provide assistance.**

# PREMIER HOCKEY SOCKS

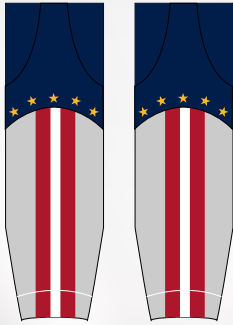
- + GAME-WEIGHT DURABLE PERFORMANCE MATERIALS
- + MIDWEIGHT: 4 WAY STRETCH
- + ELASTIC ANKLES
- + 2 VELCRO TABS TO KEEP SOCKS ATTACHED TO SHORTS



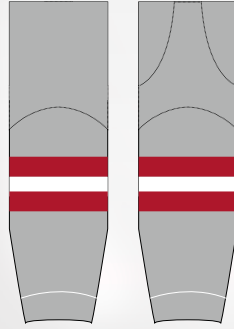
---

**SIZES AVAILABLE:**  
22", 24", 26", 30"

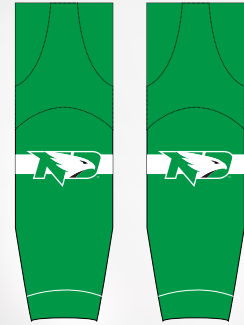
TEMPLATE 01



TEMPLATE 02



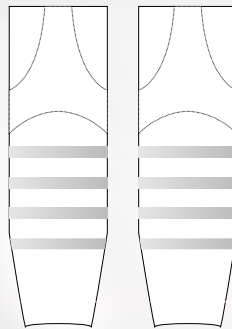
TEMPLATE 03



TEMPLATE 04



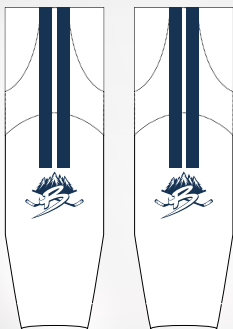
TEMPLATE 05



TEMPLATE 06



TEMPLATE 07



TEMPLATE 08



TEMPLATE 09



**Dealers are entrusted with independently creating templates for all sublimated products. To gain access to our comprehensive design assets, kindly reach out to your dedicated account manager. Should any questions arise during the design process, we encourage you to reach out to your account manager, who will connect you with a member of our design team to provide assistance.**

# REVERSIBLE LACROSSE PINNIE

- + 2-IN-1 REVERSIBLE JERSEY
- + 2-PLY CONSTRUCTION
- + PREMIUM LIGHTWEIGHT DURABLE MATERIALS
- + MICRO-PERFORATION FOR BREATHABILITY
- + EXTREMELY DURABLE AND ANTI-SNAGGING



---

**SIZES AVAILABLE:**  
**YOUTH: YS/YM, YL, YXL**  
**ADULT: XS, S/M, L/XL, 2XL, 3XL**

TEMPLATE 01



TEMPLATE 02



TEMPLATE 03



TEMPLATE 04



TEMPLATE 05



TEMPLATE 06



TEMPLATE 07



TEMPLATE 08



TEMPLATE 09



**Dealers are entrusted with independently creating templates for all sublimated products. To gain access to our comprehensive design assets, kindly reach out to your dedicated account manager. Should any questions arise during the design process, we encourage you to reach out to your account manager, who will connect you with a member of our design team to provide assistance.**

# PRO-FIT SHORT SLEEVE LACROSSE JERSEY

- + NOT-SO-BAGGY FIT - PLL STYLE CUT
- + DURABLE PRO-GRADE MATERIAL
- + MESH BACK PANEL AND ARMPIT PANELS
- + NOTCHED V-NECK COLLAR
- + RAGLAN CUT SLEEVES



---

## SIZES AVAILABLE:

YOUTH: YS/YM, YL, YXL

ADULT: XS, S/M, L/XL, 2XL, 3XL

TEMPLATE 01



TEMPLATE 02



TEMPLATE 03



TEMPLATE 04



TEMPLATE 05



TEMPLATE 06



TEMPLATE 07



TEMPLATE 08



TEMPLATE 09



**Dealers are entrusted with independently creating templates for all sublimated products. To gain access to our comprehensive design assets, kindly reach out to your dedicated account manager. Should any questions arise during the design process, we encourage you to reach out to your account manager, who will connect you with a member of our design team to provide assistance.**

# BOX LACROSSE JERSEY

- + EXTREMELY STRETCHY EXTERIOR
- + FUSED DYE: NEVER FADE PRINT
- + FITTED WORKOUT SHIRT
- + PERFORMANCE MOISTURE WICKING FABRICS
- + COVER STITCHED SEAMS



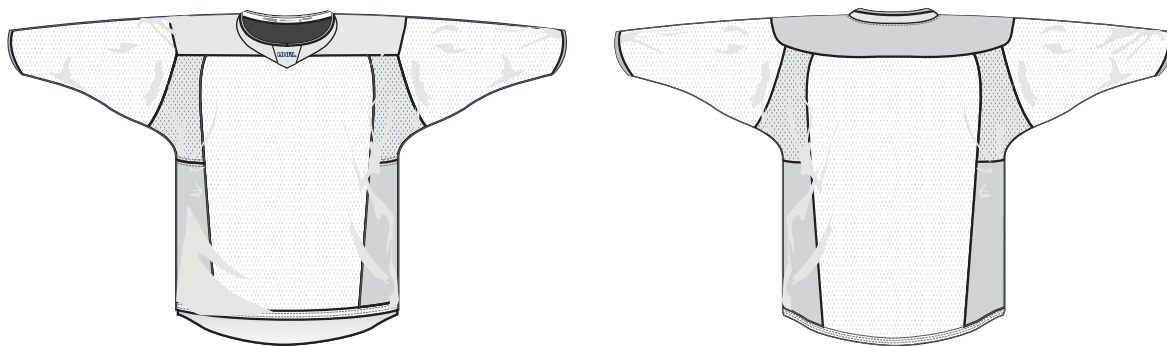
---

**SIZES AVAILABLE:**  
**YOUTH: YS, YM, YL/YXL**  
**ADULT: S-2XL**

# STEP 1: SELECT YOUR STYLE

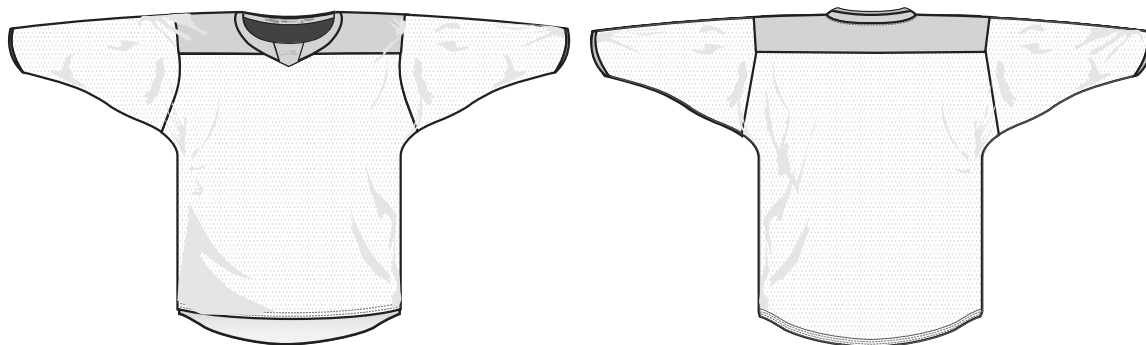
## STYLE #1: BOX LACROSSE FRANCHISE JERSEY

11 PANELS | 4 FABRICS



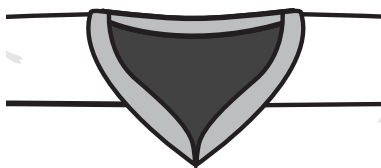
## STYLE #2: BOX LACROSSE MAINSTREAM JERSEY

5 PANELS | 2 FABRICS



# STEP 2: SELECT YOUR COLLAR

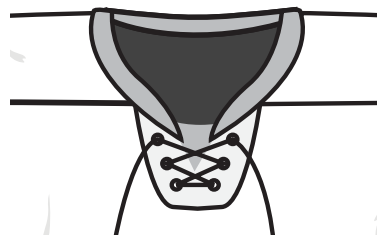
STANDARD V



BLADE



LACE UP



NOTCH



# STEP 3: SELECT YOUR TEMPLATE

TEMPLATE 02



TEMPLATE 03



TEMPLATE 04



TEMPLATE 05



TEMPLATE 06



TEMPLATE 07



# LADIES REVERSIBLE LACROSSE PINNIE

- + 2-IN-1 REVERSIBLE JERSEY
- + 2-PLY CONSTRUCTION
- + PREMIUM LIGHTWEIGHT DURABLE MATERIALS
- + MICRO-PERFORATION FOR BREATHABILITY
- + EXTREMELY DURABLE AND ANTI-SNAGGING



---

**SIZES AVAILABLE:**  
**YOUTH: YS/YM, YL, YXL**  
**ADULT: XS, S/M, L/XL, 2XL, 3XL**

TEMPLATE 01



TEMPLATE 02



TEMPLATE 03



TEMPLATE 04



TEMPLATE 05



TEMPLATE 06



TEMPLATE 07



TEMPLATE 08



TEMPLATE 09



**Dealers are entrusted with independently creating templates for all sublimated products. To gain access to our comprehensive design assets, kindly reach out to your dedicated account manager. Should any questions arise during the design process, we encourage you to reach out to your account manager, who will connect you with a member of our design team to provide assistance.**

# LADIES LACROSSE SKORT

- + PERFORMANCE LACROSSE SKORT
- + PREMIUM LIGHTWEIGHT MATERIALS
- + MICRO-PERFORATION FOR BREATHABILITY
- + CUSTOM SPANDEX LINER
- + EXTREMELY DURABLE AND ANTI-SNAGGING



---

**SIZES AVAILABLE:**  
**YOUTH: YS-YL**  
**ADULT: XS-3XL**

TEMPLATE 01



TEMPLATE 02



TEMPLATE 03



TEMPLATE 04



TEMPLATE 05



TEMPLATE 06



TEMPLATE 07



TEMPLATE 08



TEMPLATE 09



**Dealers are entrusted with independently creating templates for all sublimated products. To gain access to our comprehensive design assets, kindly reach out to your dedicated account manager. Should any questions arise during the design process, we encourage you to reach out to your account manager, who will connect you with a member of our design team to provide assistance.**

# BASEBALL JERSEY

- + FULL BUTTON PLACKET
- + FUSED DYE: NEVER FADE PRINT
- + PERFORMANCE MOISTURE WICKING FABRICS
- + COVER STITCHED SEAMS



---

**SIZES AVAILABLE:**  
**YOUTH: YS-YL**  
**ADULT: XS-4XL**

TEMPLATE 01



TEMPLATE 02



TEMPLATE 03



TEMPLATE 04



TEMPLATE 05



TEMPLATE 06



TEMPLATE 07



TEMPLATE 08

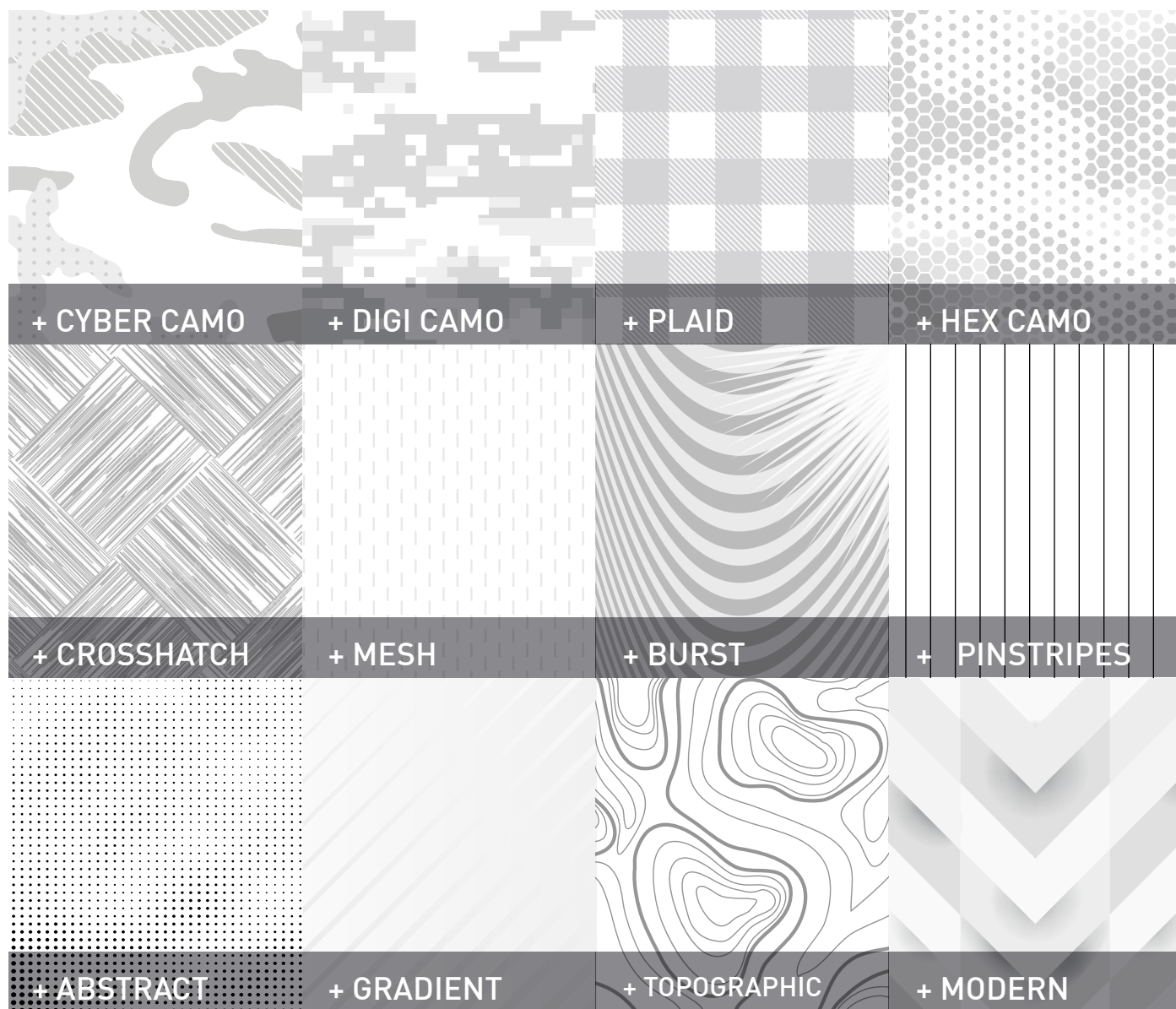


TEMPLATE 09



Dealers are entrusted with independently creating templates for all sublimated products. To gain access to our comprehensive design assets, kindly reach out to your dedicated account manager. Should any questions arise during the design process, we encourage you to reach out to your account manager, who will connect you with a member of our design team to provide assistance.

# SUBLIMATION OVERLAYS



**Combine one of our sublimation patterns to your sublimation garments. Customers are limited to one pattern per garment. You are not limited to these overlay patterns, please provide a vector (.eps or .ai) and submit for approval to your account manager.**



# UNRL®

---

**WWW.UNRL.CO**  
**ST. PAUL, MINNESOTA**

**SALES MANAGER | DANI MCLAUGHLIN**  
**DANI@UNRLCO.COM**  
**612.804.7350**