



# UNRL

FALL WINTER 2025  
WOMEN'S COLLECTION



# CHANGE LOG

---

This document serves as the change log documenting any updates implemented during the development process, consolidating all recorded changes.

+

## INDEX

COLOR THEORY	4
WOMEN'S TOPS	8
WOMEN'S BOTTOMS	17
ACCESSORIES	22
COMING SOON	25
CONTACT	27

## 01: STORM BLUE

Storm blue is a deep, muted shade of blue that evokes the dramatic and dynamic nature of stormy skies.

This color combines cool undertones with hints of gray, creating a sophisticated and slightly moody appearance. It exudes a sense of calm strength and resilience, making it ideal for both contemporary and classic designs. Storm blue pairs well with neutrals, earthy tones, and vibrant accents, adding depth and elegance to any palette.



---

## 02: PINE

Pine is a deep, rich green reminiscent of the lush needles of pine trees. It embodies the essence of nature, evoking feelings of tranquility and freshness.

This color often features subtle earthy undertones, giving it a warm and grounding quality. It pairs well with neutrals, wood tones, and brighter colors, adding depth and sophistication to any palette. Whether used as a primary shade or an accent, pine brings a sense of calm and connection to the outdoors.



## 03: COCONUT

Coconut is a warm, off-white or pale beige, reminiscent of the liquid extracted from fresh coconut. It has a smooth, velvety quality, often conveying a sense of richness and comfort.

This shade can evoke feelings of warmth and tranquility, making it an inviting choice in design and decor. Its subtle, natural hue works well with a variety of palettes, complementing both bold and soft colors beautifully.



## 04: MIDNIGHT NAVY

Midnight navy is a deep, rich shade of blue that evokes the calmness of the night sky. It has subtle undertones of black, giving it an almost mysterious quality. Unlike brighter blues, midnight navy is sophisticated and versatile, making it a popular choice in fashion.

Its darkness can convey elegance and strength, while still being soft enough to pair beautifully with a variety of colors, from crisp whites to warm neutrals. Overall, it's a color that embodies both depth and tranquility.



## 05: CANYON

Canyon is a soft, warm hue that blends gentle peach tones with earthy undertones, reminiscent of a sunset over rugged landscapes. It has a subtle warmth, evoking feelings of comfort and tranquility.

This color is a delicate mix of pink and orange, often carrying a hint of beige, which gives it a muted, sophisticated quality. Canyon peach can feel both fresh and cozy, making it an excellent choice for creating inviting spaces or adding a touch of warmth to designs. It works beautifully in natural palettes, complementing other warm earth tones and soft neutrals.



## 06: ESPRESSO

Espresso is a dark, intense brown that resembles the deep hue of freshly brewed espresso coffee. It carries a rich, almost black quality with warm undertones, giving it an elegant and luxurious feel.

This color exudes sophistication and depth, making it a popular choice in fashion. Espresso pairs well with a variety of colors, from soft neutrals to vibrant shades, and can create a striking contrast or a cozy, cohesive look. Its timeless appeal makes it suitable for various silhouettes and adds a touch of refinement to any palette.





## 07: SPRUCE

Spruce is a muted, cool-toned shade that combines deep blue and gray-green hues, reminiscent of the needles of the blue spruce tree.

This color has an earthy yet elegant quality, evoking a sense of tranquility and nature. Its subdued tones can create a calming atmosphere, making it a popular choice in interior design and fashion. Blue spruce pairs beautifully with warm neutrals, crisp whites, and other earthy colors, adding depth and sophistication to any palette.





# UNRL

└ WOMEN'S TOPS



## WOMEN'S VANCOUVER QUILTED VEST

MSRP: \$118

SKU: WVQV

Size: XXS - 2XL

Fabric: 88% Polyester / 12% Spandex

Designed for both on and off the course. Featuring low-fill quilting and water-resistant fabric, ensuring peak performance wherever your day leads.

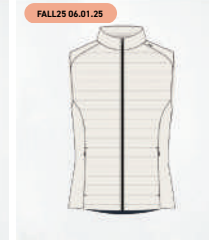
- + Midweight
- + Woven performance fabric on torso and back
- + Soft performance fabric on side panels for additional stretch
- + Low-fill quilting throughout
- + Anti-restriction: Full range of motion
- + Interior scorecard pocket for small belongings
- + Zipper secured side pockets
- + Waterproof front zipper
- + Anti-pilling
- + Wrinkle release



**BLACK**  
DELIVERY: 06/01/25



**HARBOR BLUE**  
DELIVERY: 06/01/25



**COCONUT**  
DELIVERY: 06/01/25



**PINE**  
DELIVERY: 08/01/25

## JETSET BOMBER JACKET

MSRP: \$118

SKU: JBJ

Size: XXS - 3XL

Fabric: Body Fabric: 88% Nylon / 12% Spandex

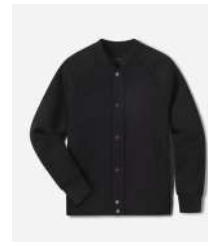
Sleeve, Collar and Hem Fabric: 64% Polyester / 28% Rayon / 8% Spandex

The perfect layering essential engineered with the perfect balance of warmth and comfort in mind while maintaining a sleek profile. Premium trims and thoughtful secondary features like a stash pocket and finished interior liner sets this jacket above the competition.

- + Midweight
- + 4-way performance stretch
- + Woven fabric on torso
- + Soft LuxBreak fabric on sleeves and hems
- + Bomber collar neckline
- + Premium matte black metal buttons
- + Secure zippered front hand pockets
- + Interior stash pocket
- + Wrinkle release; great for travel



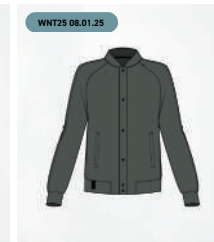
**SAND**  
DELIVERY: 06/01/25



**BLACK**  
DELIVERY: 06/01/24



**CAVERN BLUE**  
DELIVERY: 06/01/25



**PINE**  
DELIVERY: 08/01/25

# LUXBREAK OVERSIZED HOODIE

MSRP: \$88

SKU: LOH

Size: XXS - 3XL

Fabric: 64% Polyester / 28% Rayon / 8% Spandex

A flattering fit that complements all sizes. Pair with our LuxBreak Sweat Joggers and Performa High-Rise Leggings for the ultimate combination of comfort and chic.

- + Heavyweight scuba blend fabric
- + Hi-low split hem
- + Modest crop length
- + Oversized hood
- + Dropped shoulder seams
- + Soft 4-way stretch
- + Wrinkle release; great for travel
- + Moisture-wicking



**BLACK**  
DELIVERY: 06/01/25



**HAZELNUT**  
DELIVERY: 06/01/25



**HEATHER GRAY**  
DELIVERY: 06/01/25



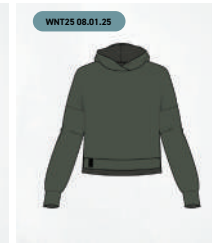
**SAND**  
DELIVERY: 06/01/25



**COCONUT**  
DELIVERY: 06/01/25



**CAVERN BLUE**  
DELIVERY: 06/01/25



**PINE**  
DELIVERY: 08/01/25

## WOMEN'S ELEVATION HOODIE

MSRP: \$88

SKU: AHD

Size: XXS - 3XL

Fabric: 88% Polyester / 12% Spandex

Featuring a premium texture, comfortable midweight design, and clean simple trims. This hoodie is the perfect for piece for lounging, a night out, or anytime you need to add a touch of style to your outfit.

- + Midweight
- + Soft textured performance fabric
- + 4-way stretch
- + Adjustable hood drawcords
- + Elevated neckline
- + Fitted band at waist



**HEATHER GRAY**  
DELIVERY: 06/01/25



**BLACK**  
DELIVERY: 06/01/25



**SAND**  
DELIVERY: 06/01/25



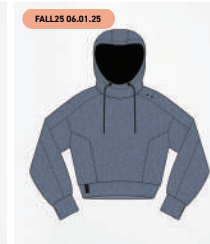
**GROVE**  
DELIVERY: 06/01/25



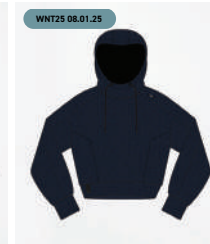
**CHARCOAL**  
DELIVERY: 06/01/25



**TAUPE**  
DELIVERY: 06/01/25



**STORM BLUE**  
DELIVERY: 06/01/25



**MIDNIGHT NAVY**  
DELIVERY: 08/01/25

## WOMEN'S ELEVATION HALF-ZIP PULLOVER

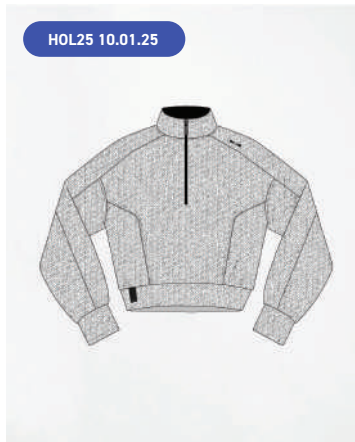
MSRP: \$94

SKU: WEHZP

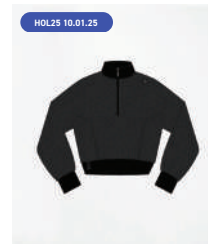
Size: XXS - 3XL

Fabric: 88% Polyester / 12% Spandex

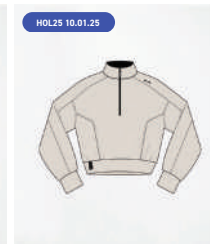
- + Midweight
- + Soft textured performance fabric
- + 4-way stretch
- + Elevated neckline
- + Fitted band at waist



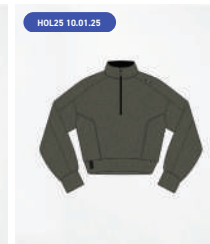
**HEATHER GRAY**  
DELIVERY: 10/01/25



**BLACK**  
DELIVERY: 10/01/25



**SAND**  
DELIVERY: 10/01/25



**GROVE**  
DELIVERY: 10/01/25

## LUXBREAK HALF-ZIP PULLOVER

MSRP: \$98

SKU: LHP

Size: XXS - 3XL

Fabric: 64% Polyester / 28% Rayon / 8% Spandex

A versatile half-zip pullover that boasts premium detailing, allowing you to effortlessly transition from the golf course to a night out. This piece perfectly complements our joggers and leggings, elevating your wardrobe with the LuxBreak touch of luxury and innovation.

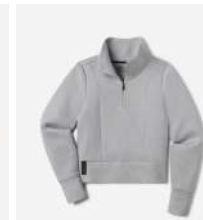
- + Heavyweight luxe scuba blend
- + Modest crop length
- + Oversized collar
- + Curved back hem
- + Branded zipper puller



**BLACK**  
DELIVERY: 06/01/25



**HAZLENUT**  
DELIVERY: 06/01/25



**HEATHER GRAY**  
DELIVERY: 06/01/25



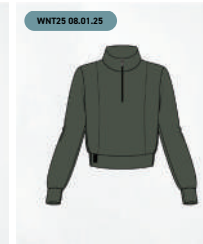
**SAND**  
DELIVERY: 06/01/25



**COCONUT**  
DELIVERY: 06/01/25



**CAVERN BLUE**  
DELIVERY: 06/01/25



**PINE**  
DELIVERY: 08/01/25

## PERFORMA FITTED HALF-ZIP

MSRP: \$88

SKU: PHZ

Size: XXS - 3XL

Fabric: 75% Nylon / 25% Spandex

The Performa Half-Zip provides peak comfort and functionality that works just about anywhere, whether you're hitting the gym or hopping onto a last-minute Zoom call. This midweight staple is designed to be lived in, featuring anti-pilling peachskin fabric, moisture-wicking technology, and UPF 30+ sun protection.

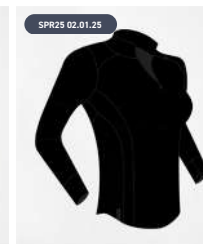
- + Midweight; great for everyday wear
- + 4-way stretch
- + Branded zipper puller
- + Hidden zippered pocket
- + Semi-fitted throughout
- + Anti-pilling fabric
- + Moisture wicking
- + UPF 30+ sun protection



**WHITE**  
DELIVERY: 06/01/25



**NINE IRON**  
DELIVERY: 06/01/25



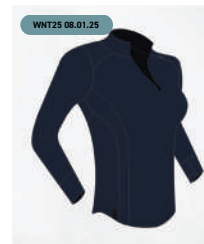
**BLACK**  
DELIVERY: 06/01/25



**DARK TAUPE**  
DELIVERY: 06/01/25



**STORM BLUE**  
DELIVERY: 06/01/25



**MIDNIGHT NAVY**  
DELIVERY: 08/01/25

**UNRL®**  
GOLF

# BOXY ULTRA TEE

MSRP: \$46

SKU: CBT

Size: XXS - 3XL

Fabric: 88% Recycled Polyester / 12% Spandex

The timeless staple you've been searching for. Crafted from our enhanced Ultra blend fabric, it's the softest tee you'll ever wear. Intentional finishes on the collar and hem give the tee an upscale feel, while the modest crop makes it suitable for wherever you rock it – whether you're at the office or lounging at home.

- + Enhanced Ultra blend fabric with added density for a plush feel
- + Sueded finish for a buttery soft feel
- + Contrast ribbed neckline
- + UPF 50+
- + Wrinkle release
- + Split side seam hem



**BLACK**

DELIVERY: 06/01/25



**HAZELNUT**

DELIVERY: 06/01/25



**GROVE**

DELIVERY: 06/01/25



**SAND**

DELIVERY: 06/01/25



**WHITE**

DELIVERY: 06/01/25



**EUCALYPTUS**

DELIVERY: 06/01/25



**STORM BLUE**

DELIVERY: 06/01/25



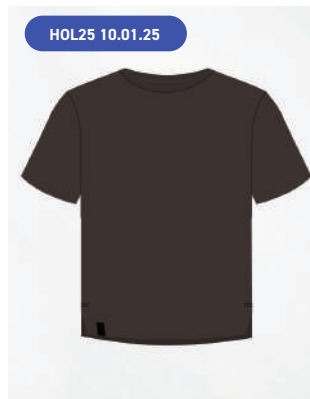
**MIDNIGHT NAVY**

DELIVERY: 08/01/25



**CANYON**

DELIVERY: 08/01/25



**ESPRESSO**

DELIVERY: 10/01/25



## PERFORMA SLEEVELESS POLO

UNRL®  
GOLF

MSRP: \$78

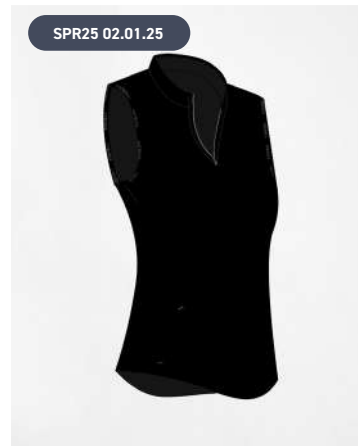
SKU: PSP

Size: XXS - 2XL

Fabric: 75% Nylon / 25% Spandex

A chic twist on our Amelia Short Sleeve Polo, this piece keeps you cool and comfortable on and off the course. Featuring multi-faceted ventilation technology and lightweight knit, keeping you comfortably cool on and off the course.

- + Lightweight performance knit
- + Quick-dry moisture wicking fabric
- + 4-way stretch
- + Breathable laser cut ventilation
- + Blade collar
- + Scooped hem allowing for tucked or untucked wear
- + UPF 30+ sun protection



**BLACK**  
DELIVERY: 06/01/25



**WHITE**  
DELIVERY: 06/01/25



**ABSTRACT WHITE-BEIGE**  
DELIVERY: 06/01/25



**STORM BLUE**  
DELIVERY: 06/01/25



**MIDNIGHT NAVY**  
DELIVERY: 08/01/25

## AMELIA SHORT SLEEVE POLO

UNRL®  
GOLF

MSRP: \$78

SKU: ASSP

Size: XXS - 2XL

Fabric: 88% Polyester / 12% Spandex

Made from lightweight performance knit with breathable ventilation, the Amelia Short-Sleeve Polo keeps you comfortably cool on the course or in the conference room. It has an ultra-flattering silhouette and slightly scooped hem, so you can wear it tucked or untucked. You'll look polished either way.

- + Lightweight performance knit
- + Blade collar
- + 4-way stretch
- + Split hem allowing for tucked or untucked wear
- + UPF 30+ sun protection



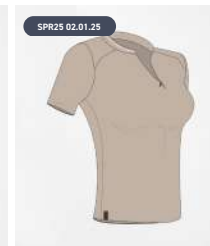
**WHITE**  
DELIVERY: 06/01/25



**SKY BLUE**  
DELIVERY: 06/01/25



**BLACK**  
DELIVERY: 06/01/25



**SAHARA**  
DELIVERY: 06/01/25



**NINE IRON**  
DELIVERY: 06/01/25

# PERFORMA FITTED TANK

MSRP: \$48

SKU: PFT

Size: XXS - 3XL

Fabric: 75% Nylon / 25% Spandex

The Performa Fitted Tank was made for performance and everyday use. Made to be layered over the Performa Longline Bra for a seamless look. True to size, it offers a slightly fitted silhouette that's both chic and comfortable. Pairs perfectly with the Perfoma High-Rise Legging and Jetset Bomber Jacket.

- + Midweight; great for everyday wear
- + Double layered brushed peachskin fabric
- + Modest square neckline
- + Anti-pilling fabric
- + Moisture wicking
- + UPF 30+ sun protection



**BLACK**

DELIVERY: 06/01/25



**DARK TAUPE**

DELIVERY: 06/01/25



**NINE IRON**

DELIVERY: 06/01/25



**WHITE**

DELIVERY: 06/01/25



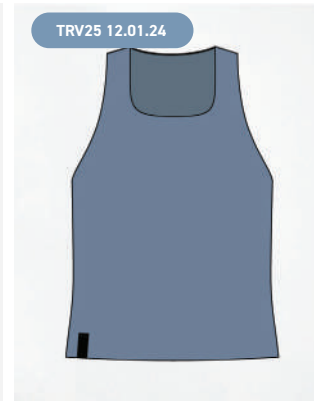
**GROVE**

DELIVERY: 06/01/25



**SAND**

DELIVERY: 06/01/25



**STORM BLUE**

DELIVERY: 06/01/25



**MIDNIGHT NAVY**

DELIVERY: 08/01/25



**ESPRESSO**

DELIVERY: 10/01/25

# PERFORMA LONGLINE BRA

MSRP: \$58

SKU: PLB

Size: XXS - XL

Fabric: 75% Nylon / 25% Spandex

The Performa Longline Bra is a fitted, mid-compression bra that offers medium support for everyday wear. Featuring sewn-in bra cups, you don't need to worry about fixing those pesky pads after every wash. The longline length hits just above the belly button. It has a square neckline for modesty and ease of movement.

- + Midweight; great for everyday wear
- + Sewn in, non-removable bra pads
- + Modest square neckline
- + Crossover front hem
- + Anti-pilling fabric
- + UPF 30+ sun protection



**BLACK**

DELIVERY: 06/01/25



**DARK TAUPE**

DELIVERY: 06/01/25



**GROVE**

DELIVERY: 06/01/25



**NINE IRON**

DELIVERY: 06/01/25



**WHITE**

DELIVERY: 06/01/25



**SAND**

DELIVERY: 06/01/25



**STORM BLUE**

DELIVERY: 06/01/25



**MIDNIGHT NAVY**

DELIVERY: 08/01/25



**ESPRESSO**

DELIVERY: 10/01/25

UNRL

└ WOMEN'S BOTTOMS

## LUXBREAK SWEAT JOGGER

MSRP: \$88

SKU: LSJ

Size: XXS - 3XL

Fabric: 64% Polyester / 28% Rayon / 8% Spandex

The LuxBreak Joggers are engineered for both relaxation and upscaled style. Pin-tuck detailing adds class, while the high-waisted Core Support waistband ensures a perfect fit. Completed by a clean cuffed ankle for a stylish, gathered appearance.

- + Heavyweight luxe scuba blend
- + Front pin-tuck detailing
- + Deep front pockets
- + Drawcords for adjustable fit



**BLACK**  
DELIVERY: 06/01/25



**HAZELNUT**  
DELIVERY: 06/01/25



**SAND**  
DELIVERY: 06/01/25



**HEATHER GRAY**  
DELIVERY: 06/01/25



**COCONUT**  
DELIVERY: 06/01/25



**CAVERN BLUE**  
DELIVERY: 06/01/25



**PINE**  
DELIVERY: 08/01/25

## JETSET JOGGER

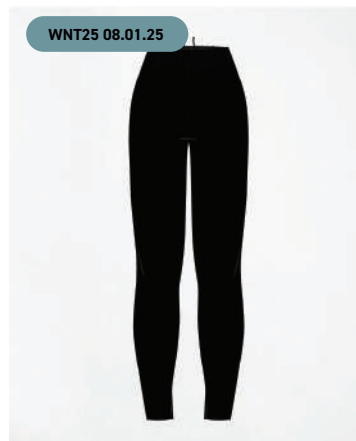
MSRP: \$88

SKU: JSJ

Size: XXS - 3XL

Fabric: 88% Polyester / 12% Spandex

- + Midweight woven fabric
- + 4-way performance stretch
- + 7/8 hybrid jogger ankle
- + High-waisted core support waistband with shaping interfacing
- + Faux back pockets for clean lines and eliminated bunching
- + Secured zippered side seam pockets
- + UPF 30+ sun protection
- + Moisture wicking



**BLACK**  
DELIVERY: 08/01/25



**HARBOR BLUE**  
DELIVERY: 08/01/25



**NINE IRON**  
DELIVERY: 08/01/25



## PERFORMA HIGH-RISE LEGGING II [7/8]

MSRP: \$84

SKU: PHL2

Size: XXS - 3XL

Inseam: [7/8]

Fabric: 75% Nylon / 25% Spandex

The updated and improved Performa II High-Rise Legging has everything you loved from our original Performa Legging and combines it with fit improvements and updated seamlines. Crafted from our buttery-soft peachskin fabric, these leggings are not only anti-pilling but also designed for lasting quality.

- + Midweight; great for everyday wear
- + High-waisted core support waistband with shaping interfacing
- + Show-through proof fabric
- + UPF 30+ sun protection
- + Anti-pilling fabric with excellent rebound
- + Moisture-wicking



**BLACK**

DELIVERY: 06/01/25



**DARK TAUPE**

DELIVERY: 06/01/25



**GROVE**

DELIVERY: 06/01/25



**NINE IRON**

DELIVERY: 06/01/25



**STORM BLUE**

DELIVERY: 06/01/25



**MIDNIGHT NAVY**

DELIVERY: 08/01/25



**ESPRESSO**

DELIVERY: 10/01/25

# PERFORMA HIGH-RISE LEGGING II [FULL]

MSRP: \$84  
SKU: PHL2F

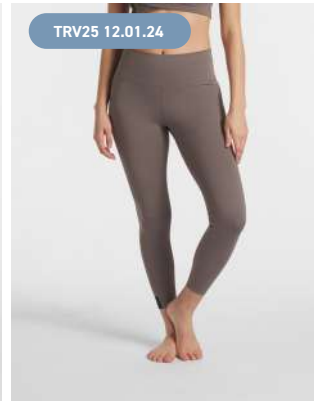
Size: XXS - 3XL  
Inseam: [Full]  
Fabric: 75% Nylon / 25% Spandex

The updated and improved Performa II High-Rise Legging has everything you loved from our original Performa Legging and combines it with fit improvements and updated seamlines. Crafted from our buttery-soft peachskin fabric, these leggings are not only anti-pilling but also designed for lasting quality.

- + Midweight; great for everyday wear
- + High-waisted core support waistband with shaping interfacing
- + Show-through proof fabric
- + UPF 30+ sun protection
- + Anti-pilling fabric with excellent rebound
- + Moisture-wicking



**BLACK**  
DELIVERY: 06/01/25



**DARK TAUPE**  
DELIVERY: 06/01/25



**GROVE**  
DELIVERY: 06/01/25



**NINE IRON**  
DELIVERY: 06/01/25



**STORM BLUE**  
DELIVERY: 06/01/25



**MIDNIGHT NAVY**  
DELIVERY: 08/01/25



**ESPRESSO**  
DELIVERY: 10/01/25

# AMELIA SKORT

MSRP: \$78

SKU: ASK

Size: XXS - 3XL

Inseam: 16"

Fabric: 88% Polyester / 12% Spandex

Featuring a high-waisted fit, stretchy fabric, and exceptional breathability, it's the ultimate fusion of comfort, performance, and on-course style. Pairs perfectly with our Amelia Polo.

- + Quick-dry and moisture wicking performance fabric
- + Midweight brushed peachskin blend
- + Lightweight breathable stretch fabric
- + High-rise waistband with core support interfacing
- + Internal shorts equipped with bonded pockets for added storage
- + 4-way stretch
- + UPF 30+ sun protection

TRV25 12.01.24



**WHITE**

DELIVERY: 06/01/25

TRV25 12.01.24



**HARBOR BLUE**

DELIVERY: 06/01/25

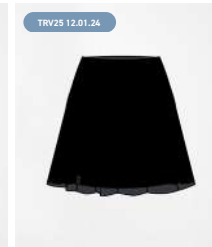
TRV25 12.01.24



**NINE IRON**

DELIVERY: 06/01/25

TRV25 12.01.24



**BLACK**

DELIVERY: 06/01/25

SPR25 02.01.25



**SAHARA**

DELIVERY: 06/01/25



# UNRL

WOMEN'S ACCESSORIES

## ECLIPSE PERFORMANCE CAP

MSRP: \$36

SKU: EPC

Size: OSFM

Fabric: 88% Polyester / 12% Spandex

The perfect blend of style, comfort, and functionality for women on the go. Designed to not only compliment your outfit but also provide shade and protection from the elements.

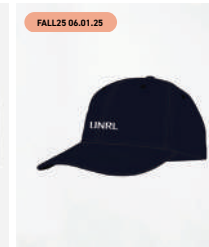
- + Lightweight textured performance fabric
- + Quick-dry materials
- + Moisture absorbing sweatband
- + Premium branded adjustable elastic strap
- + UPF 30+ sun protection



**BLACK**  
DELIVERY: 06/01/25



**WHITE**  
DELIVERY: 06/01/25



**NAVY**  
DELIVERY: 06/01/25



**STORM BLUE**  
DELIVERY: 06/01/25



**HAZELNUT**  
DELIVERY: 06/01/25



**CANYON**  
DELIVERY: 08/01/25



**SPRUCE**  
DELIVERY: 08/01/25

## TRAIN X TRAVEL BACKPACK

MSRP: \$88

SKU: TT-BP

A sleek modern bag made with water-resistant materials and large compartments to store all your belongings. Designed for athletes on the move.

- + Durable fabric with water-resistant coating
- + Waterproof zippers with reflective print
- + Secure laptop compartment fits up to 16" devices
- + Small hidden zipper compartment
- + Large main storage capacity ideal for weekend travel
- + Anti-theft locking front zipper compartment
- + Reflective detailing throughout for added visibility at night
- + Camo printed interior fabric
- + Adjustable backpack carrying straps
- + Cushioned back panel for added comfort
- + Luggage strap for easily attaching to suitcase



**BLACK**  
DELIVERY: 06/01/25



## COMMUTER DUFFLE BAG [47L]

MSRP: \$128

SKU: CMTDF

- + H29 x W60 x D27cm
- + Waterproof synthetic PU material
- + Bottom gusset structure
- + Lining: 100% Nylon
- + Waterproof zipper closure
- + Internal zippered pocket
- + External stash pocket
- + Detachable adjustable webbing strap with silicone gel UNRL branding

FALL25 06.01.25



**BLACK**

DELIVERY: 06/01/25

## COMMUTER TOTE BAG [21L]

MSRP: \$98

SKU: CMTBG

Introducing our Commuter Tote Bag, the perfect blend of style and functionality for your busy lifestyle. Crafted with durable materials and designed to be the perfect size for every occasion, whether you're heading to work, hitting the gym, or planning a weekend getaway. Stay organized and chic with this versatile tote that seamlessly transitions from day to night with ease.

- + Dimensions: 15.5"H x 17"W x 4.5"D / 21L
- + Durable waterproof PU material
- + Waterproof main compartment zipper & magnetic snap closure
- + Waterproof exterior utility pocket
- + Repeated UNRL branding throughout straps
- + Meets the airline requirement as a personal item
- + Zippered interior pocket
- + Exterior luggage strap for easily attaching to suitcase



**BLACK**

DELIVERY: 06/01/25

UNRL

COMING SOON

## FULL ZIP HOODIE - NAME PENDING

MSRP: \$

SKU:

Size: XXS - 3XL

Fabric: Cotton / Polyester / Spandex

- + Heavyweight material
- + Luxe suede handfeel
- + Wrinkle release; great for travel
- + Full center front zipper
- + Two front hand pockets
- + 3-piece hood construction



**BLACK**  
DELIVERY: COMING SOON



**MIDNIGHT NAVY**  
DELIVERY: COMING SOON



**CORE GRAY**  
DELIVERY: COMING SOON



**CANYON**  
DELIVERY: COMING SOON



**ESPRESSO**  
DELIVERY: COMING SOON

## LOUNGE SHORT - NAME PENDING

MSRP: \$

SKU:

Size: XXS - 3XL

Fabric: Cotton / Polyester / Spandex

- + Heavyweight material
- + Luxe suede handfeel
- + Wrinkle release; great for travel
- + Tall elastic waistband for added comfort
- + Deep front pockets
- + Adjustable drawstring



**BLACK**  
DELIVERY: COMING SOON



**MIDNIGHT NAVY**  
DELIVERY: COMING SOON



**CORE GRAY**  
DELIVERY: COMING SOON



**CANYON**  
DELIVERY: COMING SOON



**ESPRESSO**  
DELIVERY: COMING SOON

# UNRL

---

WWW.UNRL.CO  
ST. PAUL, MINNESOTA

DANI MCLAUGHLIN | SALES DIRECTOR  
DANI@UNRLCO.COM  
612.804.7350

L