



# BASEBALL

Spring/Summer 2022





UNDER ARMOUR

**THE ONLY  
WAY IS  
THROUGH.**







## VISION

TO INSPIRE YOU WITH PERFORMANCE  
SOLUTIONS YOU NEVER KNEW  
YOU NEEDED BUT CAN'T IMAGINE  
LIVING WITHOUT.

## MISSION

UNDER ARMOUR  
MAKES YOU BETTER.

## BASEBALL —

### MEN'S/YOUTH

- 002 BASEBALL UNIFORMS
- 034 BASEBALL APPAREL
- 037 BASEBALL FOOTWEAR
- 039 BASEBALL SOCKS
- 040 BASEBALL BAGS
- 042 BASEBALL BATTING GLOVES
- 043 BASEBALL PROTECTIVE
- 048 BASEBALL GLOVES
- 050 MEN'S AF TRAINING
- 060 UNIFORM ORDERING INFO





# BASEBALL GAMEDAY SELECT

- Select Custom UA Team Uniforms
- Set jersey and pant pricing

## GAMEDAY SELECT PROGRAM DETAILS

- Jersey – fully decorated includes:
  - Team name (1 or 2 color Armourfuse® twill)
  - Front and back numbers (1 or 2 color Armourfuse® twill)
  - Thief: Sublimated inserts at sleeve ends and around neck
  - Legend: Braided or piped at sleeve ends and around placket or neck (1/2" or 3/16")
- Pant – fully decorated includes:
  - Thief: Sublimated insert down side seam
  - Legend: Braided or piped down side seam (1/2" or 3/16")
- All catalog fonts included
- 2", 3" or 4" Team Name // 3" or 4" Front Number // 6" or 8" Back Number
- Additional details on page 64



# GAMEDAY SELECT





## THIEF FAUX JERSEYS

### LAST SEASON OFFERED

SM-2XL, OVERSIZE 3XL

FAUX 2 BUTTON	DESIGN	FABRIC	PRICE
UB016JM (M)	SM-2XL	SOLID	\$145.00
FAUX PLACKET	DESIGN	FABRIC	PRICE
UB010JM (M)	SM-2XL	SOLID	\$150.00
UBP10JM (M)	SM-2XL	PINSTRIPES	\$180.00

- 100% Polyester - Diamond Knit Front + Diamond Mesh Back (Pinstripe version = Diamond Knit Back)
- Faux Placket front closure with functional top two buttons
- Sublimated inserts around neck and sleeves

OVERSIZED SURCHARGE +\$5 PER SIZE

## THIEF V-NECK JERSEY

### LAST SEASON OFFERED

SM-2XL, OVERSIZE 3XL

V-NECK	DESIGN	FABRIC	PRICE
UB012JM (M)	SM-2XL	SOLID	\$130.00
UBP12JM (M)	SM-2XL	PINSTRIPES	\$160.00

- 100% Polyester - Diamond Knit Front + Diamond Mesh Back (Pinstripe version = Diamond Knit Back)
- Sublimated inserts around neck and sleeves

OVERSIZED SURCHARGE +\$5 PER SIZE

## THIEF PANTS

### LAST SEASON OFFERED

SM-2XL, OVERSIZE 3XL

TAPERED	DESIGN	FABRIC	PRICE
UB017PM (M)	SM-2XL	SOLID	\$100.00
UBP17PM (M)	SM-2XL	PINSTRIPES	\$130.00
RELAXED	DESIGN	FABRIC	PRICE
UB013PM (M)	SM-2XL	SOLID	\$100.00
UBP13PM (M)	SM-2XL	PINSTRIPES	\$130.00
KNICKER	DESIGN	FABRIC	PRICE
UB015PM (M)	SM-2XL	SOLID	\$100.00
UBP15PM (M)	SM-2XL	PINSTRIPES	\$130.00

- 100% Polyester - Diamond Knit
- Inseam Lengths = 32" Relaxed, 30" Tapered, 18" Knicker
- 2-ply reinforced slidezone, sublimated side inserts
- +2" or -2" inseam (no charge), or +4" (+\$15; Relaxed/Tapered only)

OVERSIZED SURCHARGE +\$5 PER SIZE

#### JERSEY AND PANT COLORS:

WHT	VWH	BBG	GPH	BLK	PUR	MDN
RYL	VBL	FGR	DKO	RED	MAR	CRD

#### PINSTRIPES:

WHT/BLK	WHT/MDN	WHT/RYL	WHT/RED
---------	---------	---------	---------



#### FAUX PLACKET

SHOWN WITH RELAXED PANT





# GAMEDAY SELECT



BASEBALL SELECT BASEBALL



**FAUX PLACKET**

SHOWN WITH KNICKER PANT



**V-NECK**

SHOWN WITH KNICKER PANT



**V-NECK**

SHOWN WITH RELAXED PANT



GAMEDAY SELECT UNIFORMS // ORDERING INFORMATION AND CUSTOMER SERVICE: 1-800-474-6118 // [www.uacustomuniforms.com](http://www.uacustomuniforms.com)

FILL-IN LIFECYCLE TIMING FOUND ON PAGE 67. DECORATION OPTIONS AND ORDERING INFORMATION ARE AVAILABLE ON PAGES 60-67.

UNDER ARMOUR® TEAM SS22 » [UATEAMCATALOGS.COM](http://UATEAMCATALOGS.COM)



## LEGEND JERSEYS

LAST SEASON OFFERED

SM-2XL, OVERSIZE 3XL

2 BUTTON VEST	DESIGN	FABRIC	PRICE
UB018JM (M)	SM-2XL	SOLID	\$120.00
FAUX PLACKET	DESIGN	FABRIC	PRICE
UB004JM (M)	SM-2XL	SOLID	\$135.00
UBP04JM (M)	SM-2XL	PINSTRIPES	\$165.00

- 100% Polyester - Diamond Knit Front + Diamond Mesh Back (Pinstripe version = Diamond Knit Back)
- Faux Placket front closure with functional top two buttons

OVERSIZED SURCHARGE +\$5 PER SIZE

## LEGEND PANTS

LAST SEASON OFFERED

SM-2XL, OVERSIZE 3XL

TAPERED	DESIGN	FABRIC	PRICE
UB019PM (M)	SM-2XL	SOLID	\$90.00
UBP19PM (M)	SM-2XL	PINSTRIPES	\$120.00
RELAXED	DESIGN	FABRIC	PRICE
UB005PM (M)	SM-2XL	SOLID	\$90.00
UBP05PM (M)	SM-2XL	PINSTRIPES	\$120.00
KNICKER	DESIGN	FABRIC	PRICE
UB005PM/K (M)	SM-2XL	SOLID	\$90.00
UBP05PM/K (M)	SM-2XL	PINSTRIPES	\$120.00

- 100% Polyester - Diamond Knit
- Inseam Lengths = 32" Relaxed, 30" Tapered, 18" Knicker
- 2-ply reinforced knees + hamstrings
- +2" or -2" inseam (no charge), or +4" (+\$15; Relaxed/Tapered only), or +6" (+\$20; Relaxed/Tapered only)

OVERSIZED SURCHARGE +\$5 PER SIZE



### JERSEY AND PANT COLORS:

WHT	VWH	BGG	GPH	BLK	PUR	MDN
RYL	VLB	FGR	DKO	RED	MAR	CRD

### PINSTRIPES:

WHT/BLK	WHT/MDN	WHT/RYL	WHT/RED
---------	---------	---------	---------

FAUX PLACKET

SHOWN WITH KNICKER PANT

FAUX PLACKET

SHOWN WITH RELAXED PANT





[illegible]









# BASEBALL ARMOURFUSE

- Brilliant, vibrant team colors permanently fused directly into textiles
- Limitless customization, all-inclusive pricing with exclusive UA designs and customized prints
- 37 different colors and 16 prints available
- 6 piece minimum order

**Showtime Jerseys:** 100% Polyester featuring a Diamond Knit front & Diamond Mesh back for breath ability.

**Gametime Jerseys:** 87% Polyester, 13% Elastane, featuring a full body lightweight Utility Mesh.



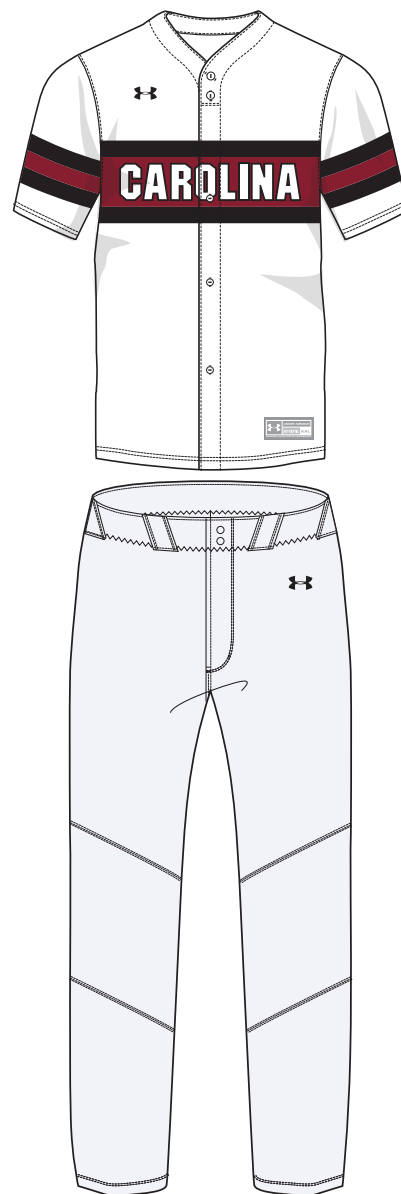
## AF SHOWTIME FAUX PLACKET JERSEY

SM-2XL, OVERSIZE 3XL

STYLE	SIZE	PACKAGE*	PRICE
UJBX2M (M)	SM-2XL	SUBLIMATED	\$118.00
		1-COLOR TWILL	\$163.00
		2-COLOR TWILL	\$173.00

- 100% Polyester - Diamond Knit Front  
+ Diamond Mesh Back
- Faux Placket front closure with functional top  
two buttons

\*PACKAGE INCLUDES TEAM NAME + FRONT & BACK NUMBERS  
ADDITIONAL TWILL OPTIONS FOUND ON PAGE 63



**WINDMILL**

**NEW DESIGN FIRST SHIP: 10/25/2021**

SHOWN WITH STOCK PANT, SEE PG 29

OVERSIZED SURCHARGE +\$5 PER SIZE // EXTENDED/SHORTENED LENGTHS OFFERED, SEE PAGE 65 FOR MORE INFO



ARMOURFUSE® UNIFORMS // ORDERING INFORMATION AND CUSTOMER SERVICE: 1-800-594-9082 // [www.underarmourteamuniforms.com](http://www.underarmourteamuniforms.com)

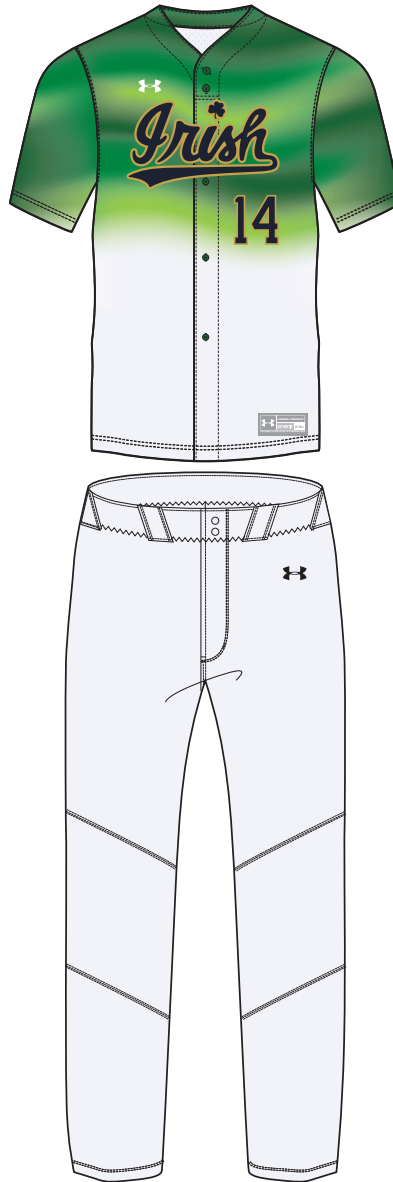
FILL-IN LIFECYCLE TIMING FOUND ON PAGE 67. DECORATION OPTIONS AND ORDERING INFORMATION ARE AVAILABLE ON PAGES 60-67.





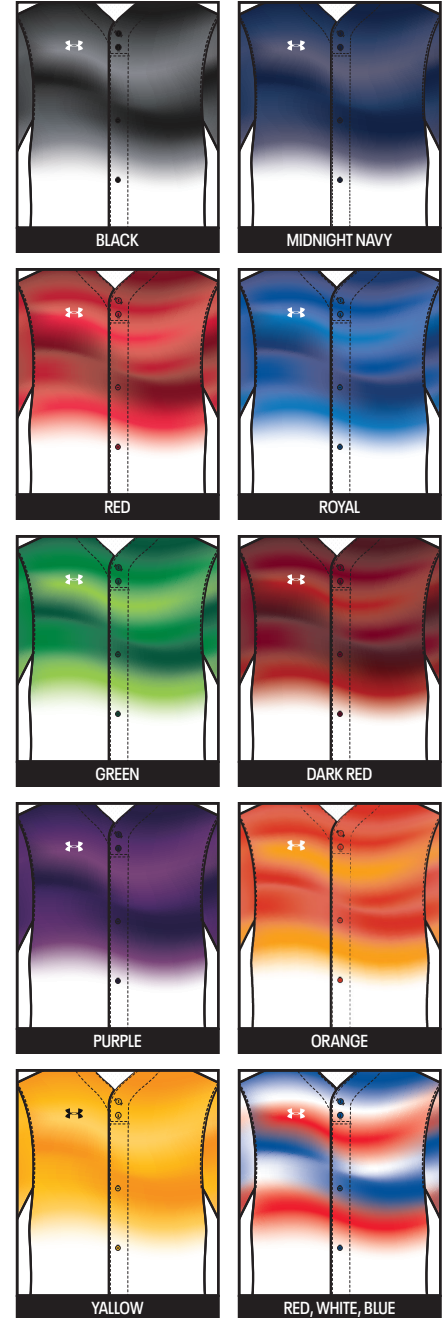
## COMISKY

SHOWN WITH STOCK PANT, SEE PG 29



## TEQUILA SUNSET

SHOWN WITH STOCK PANT, SEE PG 29



### AVAILABLE COLOR OPTIONS

(BODY COLOR ONLY AVAILABLE IN WHITE OR BASEBALL GRAY)

OVERSIZED SURCHARGE +\$5 PER SIZE // EXTENDED/SHORTENED LENGTHS OFFERED, SEE PAGE 65 FOR MORE INFO



ARMOURFUSE® UNIFORMS // ORDERING INFORMATION AND CUSTOMER SERVICE: 1-800-594-9082 // [www.underarmourteamuniforms.com](http://www.underarmourteamuniforms.com)

FILL-IN LIFECYCLE TIMING FOUND ON PAGE 67. DECORATION OPTIONS AND ORDERING INFORMATION ARE AVAILABLE ON PAGES 60-67.



## AF SHOWTIME FAUX PLACKET JERSEY

SM-2XL, OVERSIZE 3XL

STYLE	SIZE	PACKAGE*	PRICE
UJBX2M (M)	SM-2XL	SUBLIMATED	\$118.00
		1-COLOR TWILL	\$163.00
		2-COLOR TWILL	\$173.00

- 100% Polyester - Diamond Knit Front  
+ Diamond Mesh Back
- Faux Placket front closure with functional top  
two buttons

\*PACKAGE INCLUDES TEAM NAME + FRONT & BACK NUMBERS  
ADDITIONAL TWILL OPTIONS FOUND ON PAGE 63



**TURNER**

SHOWN WITH GDS PANT, SEE PG 6  
AND AF BASELAYER, SEE PG 26

OVERSIZED SURCHARGE +\$5 PER SIZE // **EXTENDED/SHORTENED LENGTHS OFFERED, SEE PAGE 65 FOR MORE INFO**



ARMOURFUSE® UNIFORMS // ORDERING INFORMATION AND CUSTOMER SERVICE: 1-800-594-9082 // [www.underarmourteamuniforms.com](http://www.underarmourteamuniforms.com)

FILL-IN LIFECYCLE TIMING FOUND ON PAGE 67. DECORATION OPTIONS AND ORDERING INFORMATION ARE AVAILABLE ON PAGES 60-67.



**CAMDEN**

SHOWN WITH GDS PANT, SEE PG 4  
AND AF BASELAYER, SEE PG 26



**SHEA**

SHOWN WITH GDS PANT, SEE PG 4  
AND AF BASELAYER, SEE PG 26

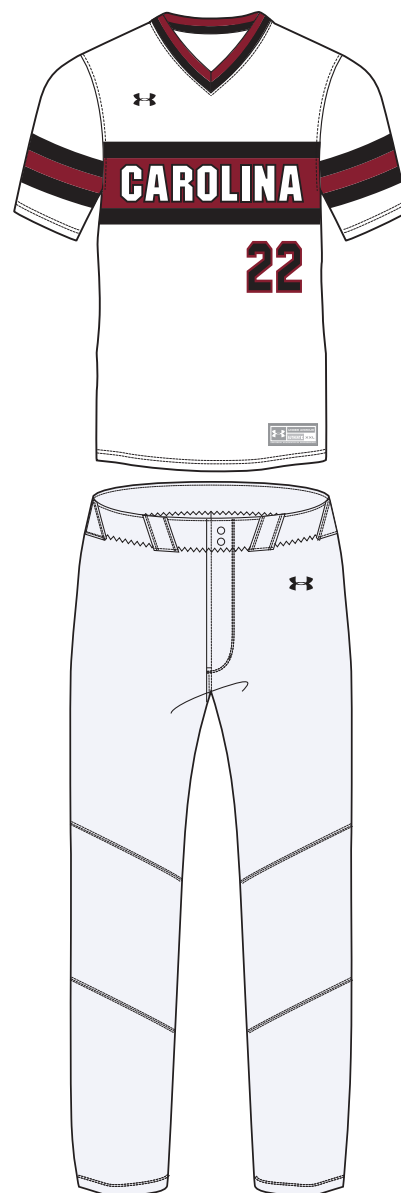
OVERSIZED SURCHARGE +\$5 PER SIZE // EXTENDED/SHORTENED LENGTHS OFFERED, SEE PAGE 65 FOR MORE INFO



ARMOURFUSE® UNIFORMS // ORDERING INFORMATION AND CUSTOMER SERVICE: 1-800-594-9082 // [www.underarmourteamuniforms.com](http://www.underarmourteamuniforms.com)

FILL-IN LIFECYCLE TIMING FOUND ON PAGE 67. DECORATION OPTIONS AND ORDERING INFORMATION ARE AVAILABLE ON PAGES 60-67.





## WINDMILL

NEW DESIGN FIRST SHIP: 10/25/2021

SHOWN WITH STOCK PANT, SEE PG 29

## AF SHOWTIME V-NECK JERSEY

SM-2XL, OVERSIZE 3XL

STYLE	SIZE	PACKAGE*	PRICE
UJBIV3M (M)	SM-2XL	SUBLIMATED	\$103.00
		1-COLOR TWILL	\$148.00
		2-COLOR TWILL	\$158.00

- 100% Polyester - Diamond Knit Front  
+ Diamond Mesh Back

\*PACKAGE INCLUDES TEAM NAME + FRONT & BACK NUMBERS  
ADDITIONAL TWILL OPTIONS FOUND ON PAGE 63

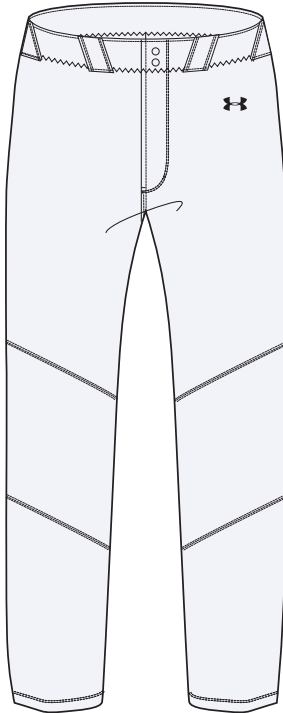
OVERSIZED SURCHARGE +\$5 PER SIZE // EXTENDED/SHORTENED LENGTHS OFFERED, SEE PAGE 65 FOR MORE INFO



ARMOURFUSE™ UNIFORMS // ORDERING INFORMATION AND CUSTOMER SERVICE: 1-800-594-9082 // [www.underarmourteamuniforms.com](http://www.underarmourteamuniforms.com)

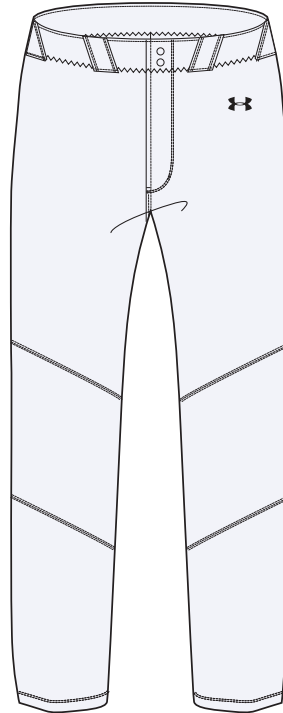
FILL-IN LIFECYCLE TIMING FOUND ON PAGE 67. DECORATION OPTIONS AND ORDERING INFORMATION ARE AVAILABLE ON PAGES 60-67.





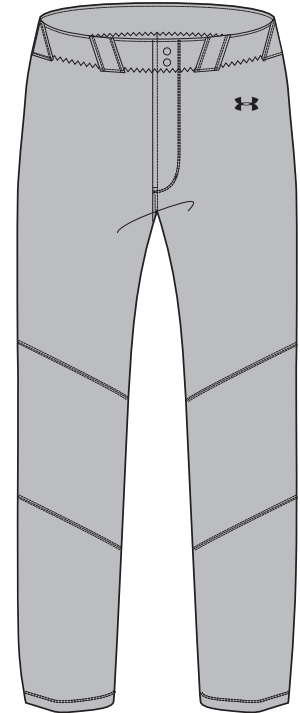
## COMISKY

SHOWN WITH STOCK PANT, SEE PG 29



## TEQUILA SUNSET

SHOWN WITH STOCK PANT, SEE PG 29



## SCOUT

SHOWN WITH STOCK PANT, SEE PG 29

OVERSIZED SURCHARGE +\$5 PER SIZE // EXTENDED/SHORTENED LENGTHS OFFERED, SEE PAGE 65 FOR MORE INFO



ARMOURFUSE® UNIFORMS // ORDERING INFORMATION AND CUSTOMER SERVICE: 1-800-594-9082 // [www.underarmourteamuniforms.com](http://www.underarmourteamuniforms.com)

FILL-IN LIFECYCLE TIMING FOUND ON PAGE 67. DECORATION OPTIONS AND ORDERING INFORMATION ARE AVAILABLE ON PAGES 60-67.



## AF SHOWTIME V-NECK JERSEY

SM-2XL, OVERSIZE 3XL

STYLE	SIZE	PACKAGE*	PRICE
UJBIV3M (M)	SM-2XL	SUBLIMATED	\$103.00
		1-COLOR TWILL	\$148.00
		2-COLOR TWILL	\$158.00

- 100% Polyester - Diamond Knit Front  
+ Diamond Mesh Back

\*PACKAGE INCLUDES TEAM NAME + FRONT & BACK NUMBERS  
ADDITIONAL TWILL OPTIONS FOUND ON PAGE 63



**CAMDEN**

SHOWN WITH GDS PANT, SEE PG 4  
AND AF BASELAYER, SEE PG 26

OVERSIZED SURCHARGE +\$5 PER SIZE // **EXTENDED/SHORTENED LENGTHS OFFERED, SEE PAGE 65 FOR MORE INFO**



ARMOURFUSE® UNIFORMS // ORDERING INFORMATION AND CUSTOMER SERVICE: 1-800-594-9082 // [www.underarmourteamuniforms.com](http://www.underarmourteamuniforms.com)

FILL-IN LIFECYCLE TIMING FOUND ON PAGE 67. DECORATION OPTIONS AND ORDERING INFORMATION ARE AVAILABLE ON PAGES 60-67.





**SHEA**

SHOWN WITH GDS PANT, SEE PG 4  
AND AF BASELAYER, SEE PG 26



**MURPHY**

SHOWN WITH STOCK PANT, SEE PG 29  
AND AF BASELAYER, SEE PG 26

OVERSIZED SURCHARGE +\$5 PER SIZE // EXTENDED/SHORTENED LENGTHS OFFERED, SEE PAGE 65 FOR MORE INFO



ARMOURFUSE® UNIFORMS // ORDERING INFORMATION AND CUSTOMER SERVICE: 1-800-594-9082 // [www.underarmourteamuniforms.com](http://www.underarmourteamuniforms.com)

FILL-IN LIFECYCLE TIMING FOUND ON PAGE 67. DECORATION OPTIONS AND ORDERING INFORMATION ARE AVAILABLE ON PAGES 60-67.

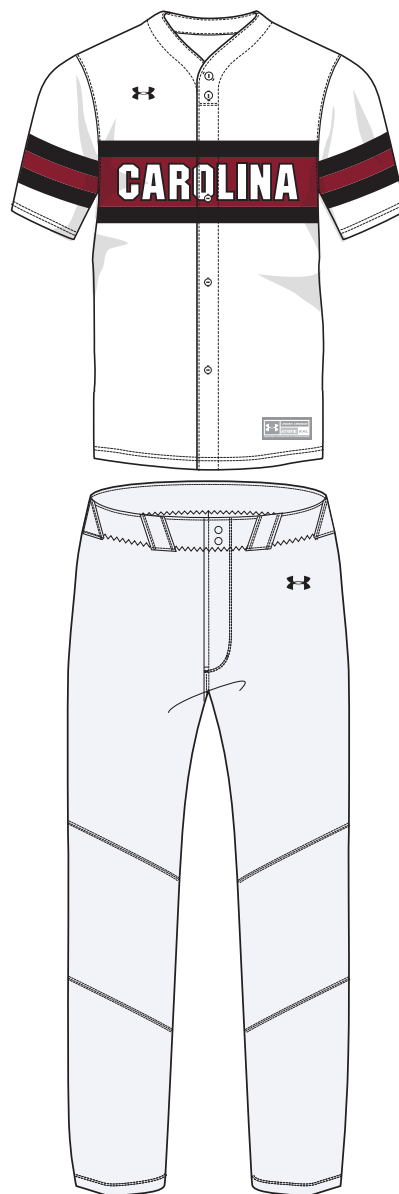
## AF GAMETIME FAUX PLACKET JERSEY

SM-2XL, OVERSIZE 3XL, YSM-YXL

STYLE	SIZE	PACKAGE*	PRICE
UJBX1M (M)	SM-2XL	SUBLIMATED	\$103.00
		1-COLOR TWILL	\$148.00
		2-COLOR TWILL	\$158.00
UJBX1Y (Y)	YSM-YXL	SUBLIMATED	\$98.00

- 87% Polyester, 13% Elastane - Utility Mesh
- Faux Placket front closure with functional top two buttons

\*PACKAGE INCLUDES TEAM NAME + FRONT & BACK NUMBERS  
ADDITIONAL TWILL OPTIONS FOUND ON PAGE 63



**WINDMILL**

**NEW DESIGN FIRST SHIP: 10/25/2021**

SHOWN WITH STOCK PANT, SEE PG 29

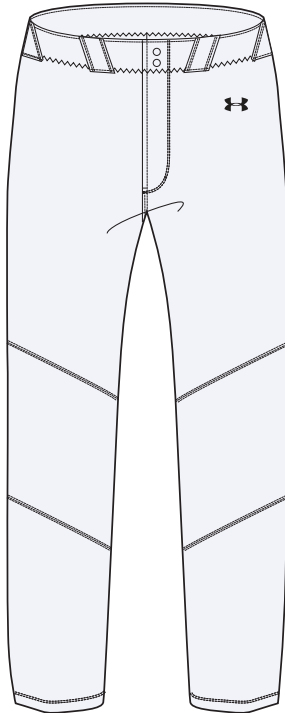
OVERSIZED SURCHARGE +\$5 PER SIZE // **EXTENDED/SHORTENED LENGTHS OFFERED, SEE PAGE 65 FOR MORE INFO**



ARMOURFUSE™ UNIFORMS // ORDERING INFORMATION AND CUSTOMER SERVICE: 1-800-594-9082 // [www.underarmourteamuniforms.com](http://www.underarmourteamuniforms.com)

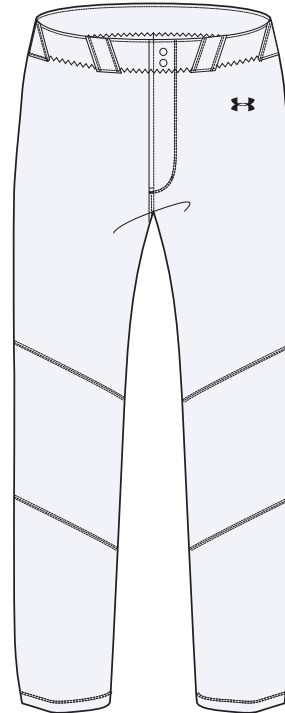
FILL-IN LIFECYCLE TIMING FOUND ON PAGE 67. DECORATION OPTIONS AND ORDERING INFORMATION ARE AVAILABLE ON PAGES 60-67.





## COMISKY

SHOWN WITH STOCK PANT, SEE PG 29



## TEQUILA SUNSET

SHOWN WITH STOCK PANT, SEE PG 29

OVERSIZED SURCHARGE +\$5 PER SIZE // EXTENDED/SHORTENED LENGTHS OFFERED, SEE PAGE 65 FOR MORE INFO



ARMOURFUSE® UNIFORMS // ORDERING INFORMATION AND CUSTOMER SERVICE: 1-800-594-9082 // [www.underarmourteamuniforms.com](http://www.underarmourteamuniforms.com)

FILL-IN LIFECYCLE TIMING FOUND ON PAGE 67. DECORATION OPTIONS AND ORDERING INFORMATION ARE AVAILABLE ON PAGES 60-67.



## AF GAMETIME FAUX PLACKET JERSEY

SM-2XL, OVERSIZE 3XL, YSM-YXL

STYLE	SIZE	PACKAGE*	PRICE
UJBX1M (M)	SM-2XL	SUBLIMATED	\$103.00
		1-COLOR TWILL	\$148.00
		2-COLOR TWILL	\$158.00
UJBX1Y (Y)	YSM-YXL	SUBLIMATED	\$98.00

- 87% Polyester, 13% Elastane - Utility Mesh
- Faux Placket front closure with functional top two buttons

\*PACKAGE INCLUDES TEAM NAME + FRONT & BACK NUMBERS  
ADDITIONAL TWILL OPTIONS FOUND ON PAGE 63



**TURNER**

SHOWN WITH GDS PANT, SEE PG 6  
AND AF BASELAYER, SEE PG 26

OVERSIZED SURCHARGE +\$5 PER SIZE // **EXTENDED/SHORTENED LENGTHS OFFERED, SEE PAGE 65 FOR MORE INFO**



ARMOURFUSE® UNIFORMS // ORDERING INFORMATION AND CUSTOMER SERVICE: 1-800-594-9082 // [www.underarmourteamuniforms.com](http://www.underarmourteamuniforms.com)

FILL-IN LIFECYCLE TIMING FOUND ON PAGE 67. DECORATION OPTIONS AND ORDERING INFORMATION ARE AVAILABLE ON PAGES 60-67.





## CAMDEN

SHOWN WITH GDS PANT, SEE PG 6  
AND AF BASELAYER, SEE PG 26



## SHEA

SHOWN WITH GDS PANT, SEE PG 4  
AND AF BASELAYER, SEE PG 26

OVERSIZED SURCHARGE +\$5 PER SIZE // EXTENDED/SHORTENED LENGTHS OFFERED, SEE PAGE 65 FOR MORE INFO



ARMOURFUSE® UNIFORMS // ORDERING INFORMATION AND CUSTOMER SERVICE: 1-800-594-9082 // [www.underarmourteamuniforms.com](http://www.underarmourteamuniforms.com)

FILL-IN LIFECYCLE TIMING FOUND ON PAGE 67. DECORATION OPTIONS AND ORDERING INFORMATION ARE AVAILABLE ON PAGES 60-67.

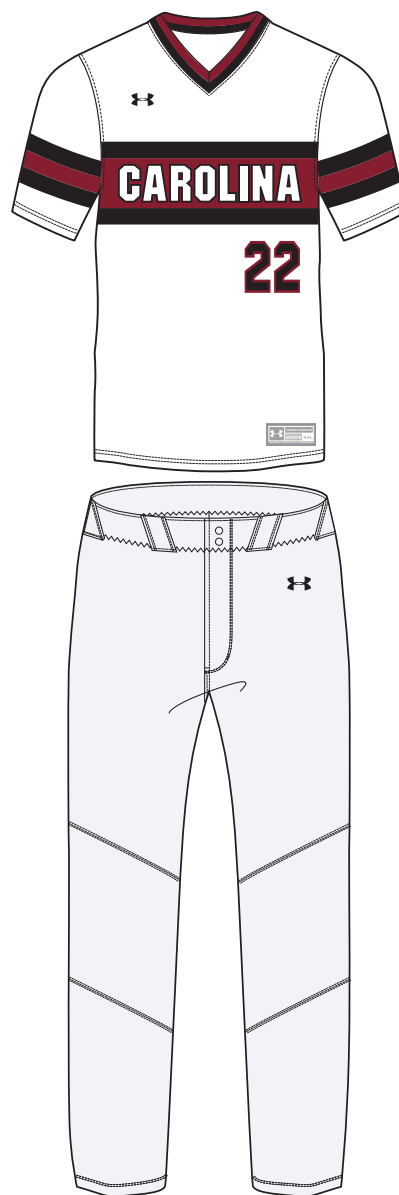
## AF GAMETIME V-NECK JERSEY

SM-2XL, OVERSIZE 3XL, YSM-YXL

STYLE	SIZE	PACKAGE*	PRICE
UJBIV2M (M)	SM-2XL	SUBLIMATED	\$88.00
		1-COLOR TWILL	\$133.00
		2-COLOR TWILL	\$143.00
UJBIV2Y (Y)	YSM-YXL	SUBLIMATED	\$83.00

•87% Polyester, 13% Elastane - Utility Mesh

\*PACKAGE INCLUDES TEAM NAME + FRONT & BACK NUMBERS  
ADDITIONAL TWILL OPTIONS FOUND ON PAGE 63



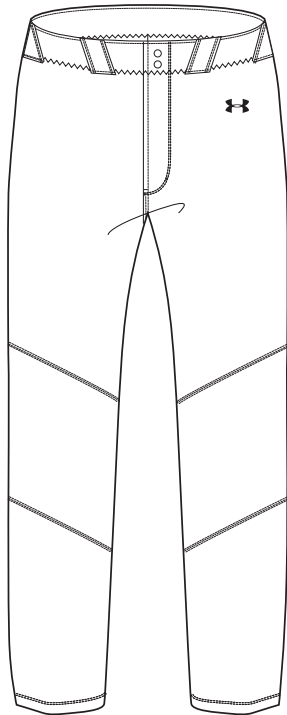
**WINDMILL**

**NEW DESIGN FIRST SHIP: 10/25/2021**

SHOWN WITH STOCK PANT, SEE PG 29

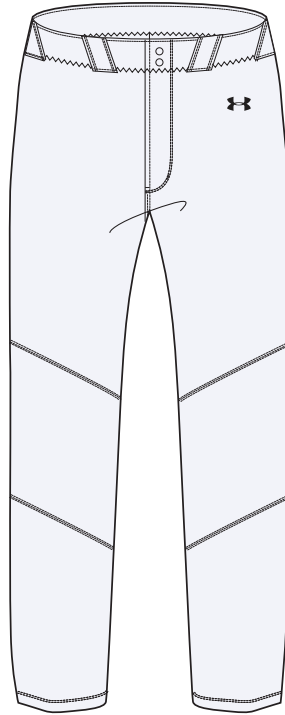
OVERSIZED SURCHARGE +\$5 PER SIZE // **EXTENDED/SHORTENED LENGTHS OFFERED, SEE PAGE 65 FOR MORE INFO**





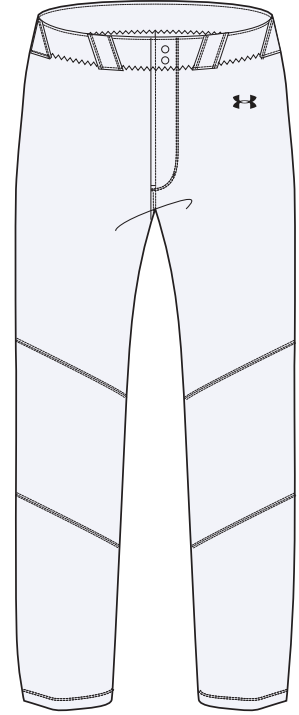
## COMISKY

SHOWN WITH STOCK PANT, SEE PG 29



## TEQUILA SUNSET

SHOWN WITH STOCK PANT, SEE PG 29



## SCOUT

SHOWN WITH STOCK PANT, SEE PG 29

OVERSIZED SURCHARGE +\$5 PER SIZE // EXTENDED/SHORTENED LENGTHS OFFERED, SEE PAGE 65 FOR MORE INFO



ARMOURFUSE® UNIFORMS // ORDERING INFORMATION AND CUSTOMER SERVICE: 1-800-594-9082 // [www.underarmourteamuniforms.com](http://www.underarmourteamuniforms.com)

FILL-IN LIFECYCLE TIMING FOUND ON PAGE 67. DECORATION OPTIONS AND ORDERING INFORMATION ARE AVAILABLE ON PAGES 60-67.

## AF GAMETIME V-NECK JERSEY

SM-2XL, OVERSIZE 3XL, YSM-YXL

STYLE	SIZE	PACKAGE*	PRICE
UJBIV2M (M)	SM-2XL	SUBLIMATED	\$88.00
		1-COLOR TWILL	\$133.00
		2-COLOR TWILL	\$143.00
UJBIV2Y (Y)	YSM-YXL	SUBLIMATED	\$83.00

•87% Polyester, 13% Elastane - Utility Mesh

\*PACKAGE INCLUDES TEAM NAME + FRONT & BACK NUMBERS  
ADDITIONAL TWILL OPTIONS FOUND ON PAGE 63



**CAMDEN**

SHOWN WITH STOCK PANT, SEE PG 29  
AND AF BASELAYER, SEE PG 26

OVERSIZED SURCHARGE +\$5 PER SIZE // EXTENDED/SHORTENED LENGTHS OFFERED, SEE PAGE 65 FOR MORE INFO



ARMOURFUSE® UNIFORMS // ORDERING INFORMATION AND CUSTOMER SERVICE: 1-800-594-9082 // [www.underarmourteamuniforms.com](http://www.underarmourteamuniforms.com)

FILL-IN LIFECYCLE TIMING FOUND ON PAGE 67. DECORATION OPTIONS AND ORDERING INFORMATION ARE AVAILABLE ON PAGES 60-67.





**SHEA**

SHOWN WITH STOCK PANT, SEE PG 29  
AND AF BASELAYER, SEE PG 26



**MURPHY**

SHOWN WITH GDS PANT, SEE PG 6  
AND AF BASELAYER, SEE PG 26

OVERSIZED SURCHARGE +\$5 PER SIZE // EXTENDED/SHORTENED LENGTHS OFFERED, SEE PAGE 65 FOR MORE INFO



ARMOURFUSE® UNIFORMS // ORDERING INFORMATION AND CUSTOMER SERVICE: 1-800-594-9082 // [www.underarmourteamuniforms.com](http://www.underarmourteamuniforms.com)

FILL-IN LIFECYCLE TIMING FOUND ON PAGE 67. DECORATION OPTIONS AND ORDERING INFORMATION ARE AVAILABLE ON PAGES 60-67.



## AF ½ SLEEVE FITTED CREW

SM-2XL, OVERSIZE 3XL

STYLE	SIZE	PRICE
UJGCHM (M)	SM-2XL	\$73.00

- Available in SHIFT, CANDLE STICK & SCOUT Designs

## AF ¾ SLEEVE FITTED CREW

SM-2XL, OVERSIZE 3XL

STYLE	SIZE	PRICE
UJGC3M (M)	SM-2XL	\$78.00

- Available in SHIFT, CANDLE STICK & SCOUT Designs



### CANDLESTICK

SHOWN WITH STOCK PANT, SEE PG 29

OVERSIZED SURCHARGE +\$5 PER SIZE



ARMOURFUSE® UNIFORMS // ORDERING INFORMATION AND CUSTOMER SERVICE: 1-800-594-9082 // [www.underarmourteamuniforms.com](http://www.underarmourteamuniforms.com)

FILL-IN LIFECYCLE TIMING FOUND ON PAGE 67. DECORATION OPTIONS AND ORDERING INFORMATION ARE AVAILABLE ON PAGES 60-67.



# FITTED CREWS



ARMOURFUSE® BASEBALL



**SHIFT**

SHOWN WITH GDS PANT, SEE PG 6



**SCOUT**

SHOWN WITH GDS PANT, SEE PG 6

OVERSIZED SURCHARGE +\$5 PER SIZE



ARMOURFUSE® UNIFORMS // ORDERING INFORMATION AND CUSTOMER SERVICE: 1-800-594-9082 // [www.underarmourteamuniforms.com](http://www.underarmourteamuniforms.com)

FILL-IN LIFECYCLE TIMING FOUND ON PAGE 67. DECORATION OPTIONS AND ORDERING INFORMATION ARE AVAILABLE ON PAGES 60-67.

UNDER ARMOUR® TEAM SS22 » [UATEAMCATALOGS.COM](http://UATEAMCATALOGS.COM)





# BASEBALL STOCK

- Unique designs and advanced technology in stock
- Pre-set designs, ready to ship
- Best-in-class stock fabrications for all levels of play



## PACKAGE DECORATION

	1COLOR	2COLOR
<b>SCREENPRINT</b>	<b>\$15.00</b>	<b>\$25.00</b>
Team Name, Front/Back Numbers		
<b>TACKLE TWILL</b>	<b>\$45.00</b>	<b>\$55.00</b>
Team Name, Front/Back Numbers		

Additional Stock Options on page 63-64.



## ICON FAUX PLACKET JERSEY

SM-2XL, OVERSIZE 3XL, YSM-YXL

STYLE	SIZE	PACKAGE	PRICE
UBJ114M (M)	SM-2XL	BLANK	\$52.00
		1-COLOR TWILL	\$97.00
		2-COLOR TWILL	\$107.00
UBJ114Y (Y)	YSM-YXL	BLANK	\$47.00

•100% Polyester - Diamond Knit Front + Diamond Mesh Back

UA RECOMMENDS THAT THIS STYLE BE DECORATED WITH TACKLE TWILL ONLY

\*PACKAGE INCLUDES TEAM NAME + FRONT & BACK NUMBERS  
OVERSIZED SURCHARGE +\$5 PER SIZE



WH

BG

## ICON RELAXED PANT

LAST SEASON OFFERED

SM-2XL, OVERSIZE 3XL, YSM-YXL

STYLE	SIZE	PACKAGE	PRICE
UBP514M (M)	SM-2XL	BLANK	\$52.00
UBP54BM (M)	SM-2XL	PIPED	\$57.00
UBP514Y (Y)	YSM-YXL	BLANK	\$47.00
UBP54BY (Y)	YSM-YXL	PIPED	\$52.00

- 100% Polyester - Diamond Knit
- Adult inseam = 33", Youth inseam = 27"
- 2-ply reinforced knees

PIPED PRICING INCLUDES COLORS SHOWN ABOVE IN 3/16"  
AFTER-BRAID +\$15. SEE PAGE 64 FOR DETAILS  
OVERSIZED SURCHARGE +\$5 PER SIZE



WH

WH/BK

WH/NA

WH/SC

WH/RO

BG

BG/BK

BG/NA

BG/SC

BG/RO



## IGNITE 2-BUTTON JERSEY

SM-2XL, OVERSIZE 3XL, YSM-YXL

STYLE	SIZE	PACKAGE	PRICE
UBJ113M (M)	SM-2XL	BLANK	\$47.00
		1-COLOR SCREEN	\$62.00
		2-COLOR SCREEN	\$72.00
		1-COLOR TWILL	\$92.00
UBJ113Y (Y)	YSM-YXL	2-COLOR TWILL	\$102.00
		BLANK	\$42.00

•100% Polyester - Base Mesh

\*PACKAGE INCLUDES TEAM NAME + FRONT & BACK NUMBERS  
OVERSIZED SURCHARGE +\$5 PER SIZE



BK/WH/BG NA/WH/BG SC/WH/BG RO/WH/BG



DG/WH/BG MA/WH/BG PU/WH/BG OR/WH/BG

## ICON KNICKER PANT

SM-2XL, OVERSIZE 3XL, YSM-YXL

STYLE	SIZE	PACKAGE	PRICE
UBP54KM (M)	SM-2XL	BLANK	\$52.00
UBP54KY (Y)	YSM-YXL	BLANK	\$47.00

- 100% Polyester - Diamond Knit
- Adult inseam = 18", Youth inseam = 15"
- 2-ply reinforced knees

AFTER-BRAID +\$15. SEE PAGE 64 FOR DETAILS  
OVERSIZED SURCHARGE +\$5 PER SIZE



WH

BG





## IGNITE V-NECK JERSEY

SM-2XL, OVERSIZE 3XL, YSM-YXL

STYLE	SIZE	PACKAGE	PRICE
UBJ112M (M)	SM-2XL	BLANK	\$37.00
		1-COLOR SCREEN	\$52.00
		2-COLOR SCREEN	\$62.00
		1-COLOR TWILL	\$82.00
		2-COLOR TWILL	\$92.00
UBJ112Y (Y)	YSM-YXL	BLANK	\$32.00

•100% Polyester - Base Mesh

\*PACKAGE INCLUDES TEAM NAME + FRONT & BACK NUMBERS  
OVERSIZED SURCHARGE +\$5 PER SIZE



SHOWN WITH STOCK PANT, SEE PG 29



## UA NEXT 2-BUTTON BASEBALL JERSEY

LAST SEASON OFFERED, CLOSEOUT PRICING AVAILABLE

FIRST SHIP: C/O // SM-2XL, OVERSIZE 3XL, YXXS-YXL

STYLE	SIZE	BLANK	DECORATION PACKAGE*		
			1-99 UNITS	100-249 UNITS	250+ UNITS
UBJ620M (M)	SM-2XL	\$32.00	\$47.00	\$45.50	\$44.00
UBJ620Y (Y)	YXXS-YXL	\$30.00	\$45.00	\$43.50	\$42.00

- 100% Polyester performance knit mock mesh
- Fabric wicks sweat to keep you dry and at peak performance

\*PACKAGE INCLUDES 2-COLOR SCREEN PRINT TEAM NAME + 1-COLOR DURATEK BACK NUMBERS  
OVERSIZED SURCHARGE +\$5 PER SIZE



## UA NEXT KNICKER BASEBALL PANT

LAST SEASON OFFERED, CLOSEOUT PRICING AVAILABLE

SM-2XL, OVERSIZE 3XL, YXS-YXL

STYLE	SIZE	PACKAGE	PRICE
UBP7KOM (M)	SM-2XL	BLANK	\$36.00
UBP7KOY (Y)	YXS-YXL	BLANK	\$33.00

- 100% Polyester double knit
- UA branded internal waistband
- After-braid options listed on page 374

OVERSIZED SURCHARGE +\$5 PER SIZE





## UA NEXT CREW NECK BASEBALL JERSEY

LAST SEASON OFFERED, CLOSEOUT PRICING AVAILABLE

FIRST SHIP: C/O // SM-2XL, OVERSIZE 3XL, YXXS-YXL

STYLE	SIZE	BLANK	DECORATION PACKAGE*		
			1-99 UNITS	100-249 UNITS	250+ UNITS
UBJ6C1M (M)	SM-2XL	\$23.00	\$38.00	\$36.50	\$35.00
UBJ6C1Y (Y)	YXXS-YXL	\$21.00	\$36.00	\$34.50	\$33.00

- 100% Polyester pique knit
- Fabric wicks sweat to keep you dry and at peak performance

\*PACKAGE INCLUDES 2-COLOR SCREEN PRINT TEAM NAME + 1-COLOR DURATEK BACK NUMBERS  
OVERSIZED SURCHARGE +\$5 PER SIZE



## UA NEXT OPEN BOTTOM BASEBALL PANT

LAST SEASON OFFERED, CLOSEOUT PRICING AVAILABLE

SM-2XL, OVERSIZE 3XL, YSM-YXL

STYLE	SIZE	PACKAGE	PRICE
UBP7WOM (M)	SM-2XL	SOLID	\$36.00
UBP7WOY (Y)	YSM-YXL	SOLID	\$33.00
UBP7WBM (M)	SM-2XL	BRAIDED	\$40.00
UBP7WBY (Y)	YSM-YXL	BRAIDED	\$37.00

- 100% Polyester double knit
- UA branded internal waistband
- Braided version uses 3/16" braid
- After-braid options listed on page 374

OVERSIZED SURCHARGE +\$5 PER SIZE



## APPAREL

**NEW****1367347****UA GAMEDAY VANISH PANT PIPE**\$45.00 | **LOOSE** | SM-3XL**YOUTH: 1367357** | \$40.00 | YSM-YXL**1367350****UA GAMEDAY VANISH PANT**\$40.00 | **LOOSE** | SM-3XL**YOUTH: 1367358** | \$35.00 | YSM-YXL

FIRST SHIP: 11/1/2021

- New modern tapered fit
- 4-way stretch fabric for full range of motion
- Lightweight, breathable, fast drying Vanish Fabric
- 2 Set-in back pockets
- Treated with Stain Release

100% POLYESTER

**heatgear™**

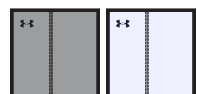
YOUTH OFFERED IN ALL COLORS

**PREBOOK ONLY****UA GAMEDAY VANISH PANT PIPE**

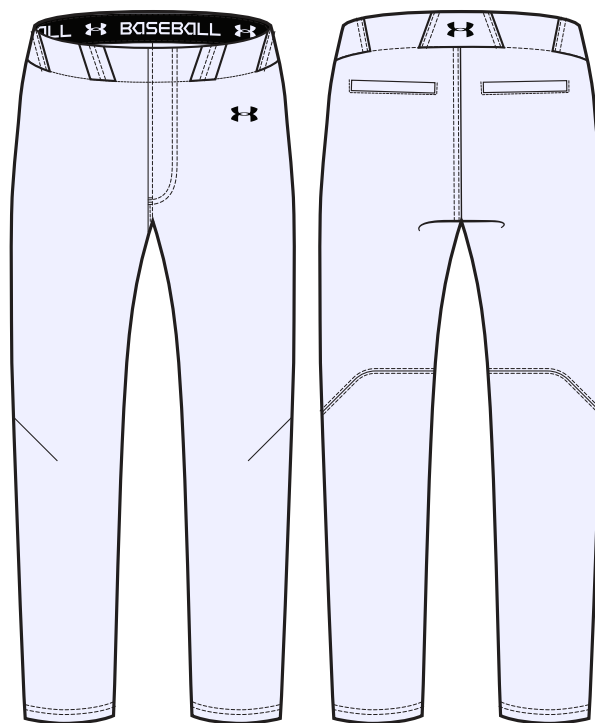
080 BGG/BLK   081 BGG/RYL   082 BGG/MDN   083 BGG/RED



100 WHT/BLK   101 WHT/RYL   102 WHT/MDN   103 WHT/RED

**UA GAMEDAY VANISH PANT**

080 BGG   100 WHT



**NEW**

**1367346**

# UTILITY SLIDING SHORTS 21

\$40.00 | **LOOSE** | SM-3XL

**YOUTH: 1367356** | \$35.00 | YSM-YXL

FIRST SHIP: 11/1/2021

- Universal cup pocket
- 4-way stretch Heatgear fabric
- Mesh inserts for breathability
- Padded seat for extra protection

100% POLYESTER

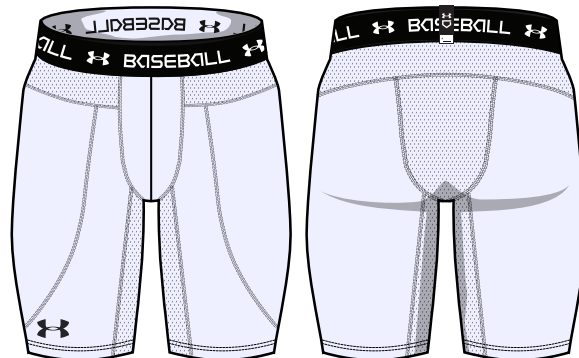
**heatgear**

YOUTH OFFERED IN ALL COLORS

**PREBOOK ONLY**



100  
WHT



**1252084**

# UA M'S BASEBALL BELT

\$12.99 | OSFA, LENGTH 44" ADJUSTABLE

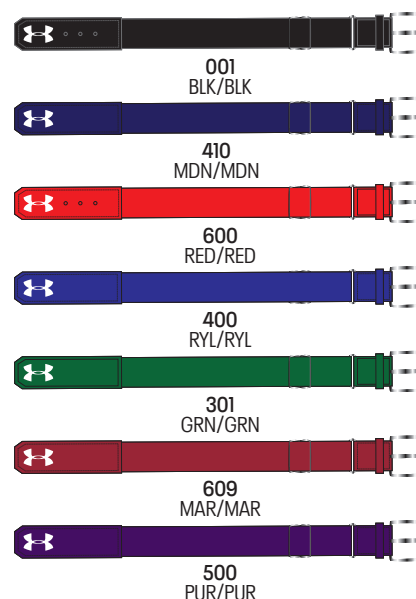
**YOUTH: 1252085** | \$12.99

OSFA, LENGTH 41" ADJUSTABLE

FIRST SHIP: C/O

- Elastic webbing with polyurethane
- Custom UA branded belt loop

70% ELASTIC, 30% PU





## 1351318

### UA M'S MOTIVATE WOVEN SHORTSLEEVE ¼ ZIP

\$60.00 | LOOSE | SM-4XL

YOUTH: 1351408 | \$50.00 | YSM-YXL

FIRST SHIP: C/O // LAST SHIP: 2/28/2022

- UA Storm technology repels water without sacrificing breathability
- Lightweight stretch-woven fabric delivers superior comfort & durability
- Raglan sleeves
- Embroidered Logo

84% POLYESTER, 16% ELASTANE

**heatgear** **STORM**

Y = YOUTH OFFERING



## 1351319

### UA M'S MOTIVATE WOVEN LONGSLEEVE ¼ ZIP

\$70.00 | LOOSE | SM-4XL (3XL, 4XL: 15% UPCHARGE)

FIRST SHIP: C/O // LAST SHIP: 2/28/2022

- UA Storm technology repels water without sacrificing breathability
- Lightweight stretch-woven fabric delivers superior comfort & durability
- Raglan sleeves
- Embroidered Logo

84% POLYESTER, 16% ELASTANE

**heatgear** **STORM**



## 3022999 UA YARD MT

\$90.00 | SIZES: 6.5-13, 14, 15, 16

FIRST SHIP: C/O // LAST SHIP: 9/15/2022

- Molded heel, textile forefoot & breathable mesh toe box make it fit & feel like a sneaker
- Updated midfoot construction for ultimate lock-down fit
- Softer, more secure heel pocket for added comfort
- Updated molded sockliner for more comfort & better internal traction inside your cleat
- Charged Cushioning® midsole converts impact into explosive speed & power on the diamond
- New UA Microtips technology provides comfort, more traction & less weight underfoot
- 10 strategically placed metal cleats on perimeter for more points of ground contact to reduce cleat pressure
- New spike shape is sharper & engineered for increased traction & quicker release



002  
BLK/WHT/BLK



005  
BLK/BLK/MSV



101  
WHT/WHT/MSV



401  
MDN/WHT/MDN



600  
RED/WHT/RED



402  
RYL/WHT/RYL

## 3023439 UA YARD LOW MT TPU

\$80.00 | SIZES: 4-13, 14, 15, 16

FIRST SHIP: C/O // LAST SHIP: 9/15/2022

- Molded heel, textile forefoot & breathable mesh toe box make it fit & feel like a sneaker
- Updated midfoot construction for ultimate lock-down fit
- Softer, more secure heel pocket for added comfort
- Updated molded sockliner for more comfort & better internal traction inside your cleat
- Charged Cushioning® midsole converts impact into explosive speed & power on the diamond
- New UA Microtips technology provides comfort, more traction & less weight underfoot
- 10 strategically placed TPU cleats on perimeter for more points of ground contact to reduce cleat pressure
- New TPU shape cleat shape is sharper & engineered for increased traction & quicker release



001  
BLK/WHT/BLK



100  
WHT/WHT/WHT



600  
RED/WHT/RED



400  
RYL/WHT/RYL

**NEW****3023441****UA LEADOFF MID RM**

\$45.00 | SIZES: 6.5-13, 14, 15

**YOUTH: 3023448** | \$35.00 | 8K-13K, 1-6

FIRST SHIP: 10/1/2021

- Synthetic upper is lightweight & durable with perforations in the toe box for added breathability
- Synthetic toe cap for enhanced protection & durability
- Padded collar & heel construction for ultimate step-in comfort
- Full-length EVA midsole for added comfort, cushioning that evenly distributes cleat pressure under the foot
- Rubber molded cleats provide optimal traction & durability on all field surfaces

Y = YOUTH OFFERING

**600 & 400 PREBOOK ONLY**

001  
BLK/WHT/WHT  
001Y  
BLK/WHT/BLK



600  
RED/WHT/WHT



400  
RYL/WHT/WHT

**NEW****3023442****UA LEADOFF LOW RM**

\$40.00 | SIZES: 6.5-13, 14, 15

**YOUTH: 3023449** | \$30.00 | 8K-13K, 1-6

FIRST SHIP: 10/1/2021

- Synthetic upper is lightweight & durable with perforations in the toe box for added breathability
- Synthetic toe cap for enhanced protection & durability
- Padded collar & heel construction for ultimate step-in comfort
- Full-length EVA midsole for added comfort, cushioning that evenly distributes cleat pressure under the foot
- Rubber molded cleats provide optimal traction & durability on all field surfaces

Y = YOUTH OFFERING

**100, 600, 400 & 601 PREBOOK ONLY**

001  
BLK/WHT/WHT  
001Y  
BLK/WHT/BLK



100 Y  
WHT/BLK/BLK



600 Y  
RED/WHT/WHT



400 Y  
RYL/WHT/WHT



601 Y  
CER/WHT/CER  
(YOUTH ONLY)



## 3023000 UA YARD TURF

\$80.00 | SIZES: 5.5-13, 14, 15, 16

**WIDE: 3023443** | \$80.00 | 8-13, 14, 15

**YOUTH: 3023898** | \$60.00 | 1-6

FIRST SHIP: C/O // LAST SHIP: 9/15/2022

- Molded heel, textile forefoot & breathable mesh toe box make it fit & feel like a sneaker
- Updated midfoot construction for ultimate lock-down fit
- Softer, more secure heel pocket for added comfort
- Updated molded sockliner for more comfort & better internal traction inside your cleat
- Charged Cushioning® midsole converts impact into explosive speed & power on the diamond
- New durable rubber outsole with increased lug height for improved grip & traction

W = WIDE OFFERING, Y = YOUTH OFFERING



003  
BLK/WHT/WHT  
001 W,Y  
BLK/WHT/BLK



102  
STL/STL/WHT



401  
MDN/WHT/MDN



600  
RED/WHT/RED



400  
RYL/WHT/RYL

## SOCKS

## 1270244 UA TEAM OVER-THE-CALF

\$9.99 | SINGLE PAIR | MD, LG, XL

**YOUTH: 1270245** | \$8.99 | YLG

FIRST SHIP: C/O // LAST SHIP: 3/15/2022

- Strategic Cushion protects high-impact areas of feet
- Embedded Arch Support helps reduce foot fatigue
- ArmourDry™ Material wicks moisture, accelerates evaporation
- ArmourBlock® Technology helps prevent growth of odor-causing bacteria

84% POLYESTER, 14% NYLON, 2% SPANDEX

Y = YOUTH OFFERING

609/MAR NOT SHOWN



001 BLK/WHT 040 GPH/BLK 100 WHT/BLK 301 GRN/WHT 400 RYL/WHT 410 MDN/WHT



500 PUR/WHT 600 RED/WHT 625 CRD/WHT 654 TPK/BLK 750 SGD/BLK

# BAGS

**1350105**

## UA YARD BATPACK

**\$80.00**

FIRST SHIP 001: C/O, 002: 10/1/2021

- UA Storm technology delivers an element-battling, highly water-resistant finish
- Foam padded back panel for enhanced comfort & breathability
- Soft tricot-lined front valuables pocket & a hook & loop section for batting glove storage
- Built-in fence hook for on field organization
- Airvent shoe compartment on front is embroidery compatible for customization
- Molded sunglasses pocket for added protection
- Second bag strap clip for multiple ways to carry
- XL capacity holds 4 bats, cleats, batting gloves, valuables, gloves & water bottle

**STORM**



001  
BLK/WHT

002  
BLK/HVY

**NEW**

**1369318**

## UA UTILITY PRINT BATPACK

**\$65.00**

FIRST SHIP: 10/1/2021

- UA Storm technology delivers an element-battling, highly water-resistant finish
- Foam padded back panel for enhanced comfort & breathability
- Soft tricot-lined front valuables pocket & a hook & loop section for batting glove storage
- Built-in fence hook for on field organization
- Airvent shoe compartment on front is embroidery compatible for customization
- Second bag strap clip for multiple ways to carry
- Large capacity holds 4 bats, cleats, batting gloves, valuables, gloves & water bottle

**STORM**



001  
BLK/HVY

035  
STL/GLD

600  
RED/WHT

400  
RYL/WHT

**NEW**

**1365313**

## UA ACE2 T-BALL BATPACK

**\$40.00**

FIRST SHIP: 10/1/2021

- UA Storm technology delivers an element-battling, highly water-resistant finish
- Foam padded back panel for enhanced comfort & breathability
- Soft tricot-lined front valuables pocket & a hook & loop section for batting glove storage
- Built-in fence hook for on field organization
- Airvent shoe compartment on front is embroidery compatible for customization
- Small capacity holds 2 bats, cleats, batting gloves, valuables, gloves & water bottle
- Ideal size for ages 4-7
- Top grab handle

**STORM**



002  
BLK/HVY

**NEW**

**1365312**

## UA BASEBALL WHEELED BAG

**\$150.00**

FIRST SHIP: 10/1/2021

- UA Storm technology delivers an element-battling, highly water-resistant finish
- Multiple options on the go including shoulder straps, grab handles, wheels
- Big enough for even catcher's gear, with separate compartments for your helmet and cleats
- Side panel is completely removable for team or player embellishment
- Separate storage for up to 6 bats

**STORM**



001  
BLK/WHT



## GLOVES

## 1355544 UA YARD

\$40.00 | COMES IN PAIRS | SM-2XL

FIRST SHIP: C/O // LAST SHIP: 9/15/2022

- Premium embossed leather for ultimate feel
- 2x Layer UA Heatgear fabric with 4-way stretch in the knuckles
- Leather overlays in the fingers for added support
- Neoprene wrist with TPR closure tab



## NEW 1365461 UA CLEAN UP 21

\$25.00 | COMES IN PAIRS | SM-2XL

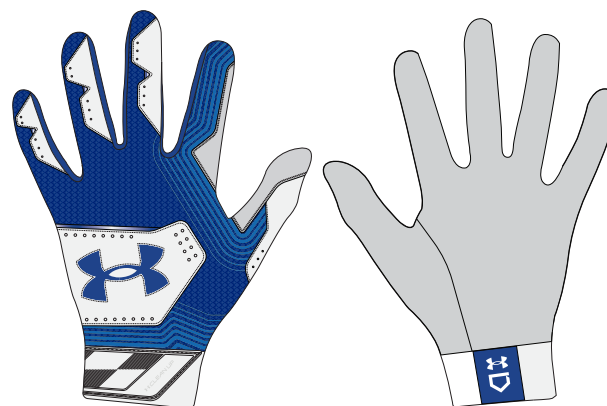
YOUTH: 1365462 | \$20.00 | YSM-YLG

FIRST SHIP: 6/20/2021

- Synthetic palm provides durability and soft touch for added grip
- UA HeatGear® fabric with 4-way stretch for a cool, comfortable feel
- Perforated synthetic overlays add support & durability
- Finger perforations for added breathability
- Elastic Cuff provides wrist support and a locked-in feel

Y = YOUTH OFFERING

731/HVY NOT SHOWN. AVAILABLE IN YOUTH ONLY.



## UACKCC4-APRO UA PRO 4 SERIES™ CATCHING KIT

\$625.00 | AGES 16+ | 16.5"

**UACKCC4-SRP** | \$575.00 | AGES 12-16

**UACKCC4-JRP** | \$525.00 | AGES 9-12

FIRST SHIP: C/O

- Meets NOCSAE Chest Protector & Helmet standards
- Includes Helmet, Chest Protector, and Leg Guards

### UACKCC4-APRO

- UAHG3-A, UACPCC4-APRO, UALG4-AP

### UACKCC4-SRP

- UAHG3-A, UACPCC4-SRP, UALG4-SRP

### UACKCC4-JRP

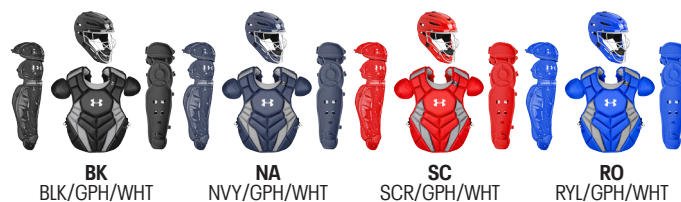
- UAHG3-Y, UACPCC4-JRP, UALG4-JRP



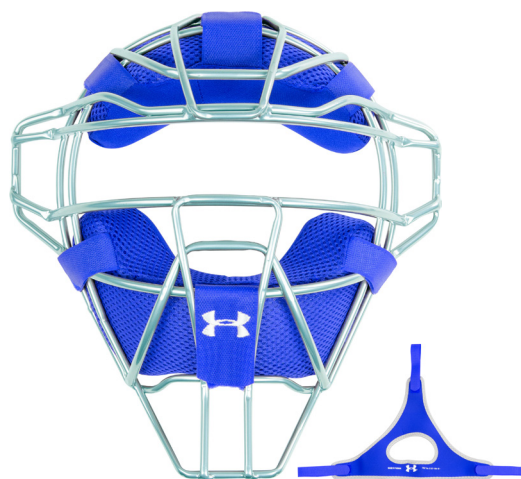
## PROTECTIVE

**NEW****UACKCC6-APRO****UA PRO SERIES 6™ HIGH SCHOOL KIT****\$500.00****FIRST SHIP: 10/1/2021**

- Meets NOCSAE Chest Protector & Helmet standards
- Includes Helmet, Chest Protector, and Leg Guards  
UAHG2-AVS, UACPC4-APRO, UALG6-AP
- Leg Guards available only in kit

**UAFM2-LUC****UA CLASSIC PRO FACEMASK****\$150.00 | 22 OZ.****FIRST SHIP: C/O**

- Synthetic moisture wicking fabric
- I-Bar Vision™ hollow steel flat bar cage for great vision and increased strength
- Anti-slip neoprene facemask harness included





## UASC500 UA PRO FIELD CAP

\$45.00

FIRST SHIP: C/O

- One size fits most design
- Available in solid colors
- Fits Hat Sizes 6 7/8 - 7 5/8
- Streamlined Vents



## UAKS2 UA KNEE SUPPORTS

\$45.00

YOUTH: UAKS2-Y | \$45.00

FIRST SHIP: C/O

- Attach to leg guard harness to provide support
- Easy to attach and adjust
- Multi-level foam construction to provide necessary support and comfort
- Used by amateur through professional athletes
- Compatible with all leg guards



# PROTECTIVE

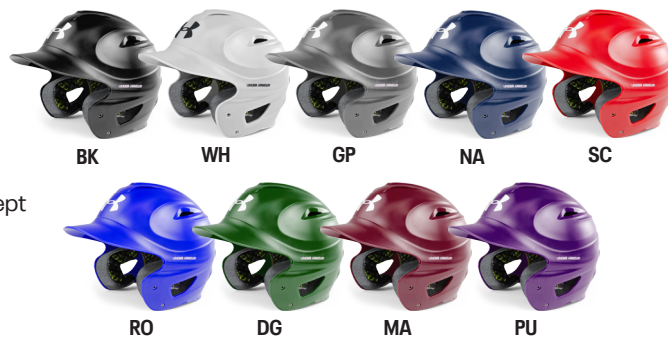
## UABH100MM UA MATTE MOLDED BATTING HELMET

\$45.00 | 6½-7½ (OSFA)

YOUTH: UABH110MM | \$45.00 | 6¾ & UNDER (OSFA)

FIRST SHIP: C/O

- Featuring a One Size Fits All dual density foam liner system.
- The liner is breathable, moisture wicking, and none of the padding blocks any of the large vent ports
- Pony-tail channel built into padding for softball players
- The shell, constructed from durable ABS plastic, has 12 large vent holes for maximum breathability
- The shell is designed to deflect balls upon impact, provides extended cheek bone protection and coverage to protect a player's brain stem in the back of the neck
- Hardware is pre-mounted in the helmet making it ready to accept a batting helmet chin strap or batting helmet face guard
- Lower batting helmet chinstrap snap is removable



## UABH2 100-M UA CONVERGE MATTE BATTING HELMET

\$60.00 | 6½-7½ (OSFA)

YOUTH: UABH2 110-M | \$60.00 | 6¾ & UNDER (OSFA)

FIRST SHIP: C/O

- The UA Converge batting helmet features a completely updated shell with ridges and corrugations for added strength
- The large ventilation ports and HeatGear™ liner keeps players cool and dry
- If a softball or baseball cage is needed, the hardware is premounted on the helmet for easy attachment.
- Foam and fabric treated with antimicrobial to remove unwanted bacteria and odors
- The Adult and Youth feature a standard OSFA liner



**NEW**

## UABH2 100-MTT UA CONVERGE MATTE TWO TONE BATTING HELMET

\$70.00 | 6 ½ - 7 ½ (OSFA)

UABH2 110-MTT | \$70.00 | 6 ¾ & UNDER (OSFA)

FIRST SHIP: 10/1/2021

- The NEW UA Converge batting helmet features a completely updated shell with ridges and corrugations for added strength
- The large ventilation ports and HeatGear™ liner keeps players cool and dry
- If a softball or baseball cage is needed, the hardware is premounted on the helmet for easy attachment
- Foam and fabric treated with antimicrobial to remove unwanted bacteria and odors
- The Adult and Youth feature a standard OSFA liner



## UA PRO FACEGUARD

\$20.00

UABHPFG-RHB | RIGHT HAND BATTER

UABHPFG-LHB | LEFT HAND BATTER

UABHPFG-M-RHB | RIGHT HAND BATTER - MATTE

UABHPFG-M-LHB | LEFT HAND BATTER - MATTE

FIRST SHIP: C/O

- No drilling required
- Bolts directly to preexisting hardware
- Compatible with all UA adult and youth batting helmets





# GLOVES

## UA FLAWLESS GLOVES

\$375.00

FIRST SHIP: C/O

Under Armour's first fielding glove offering comes after extensive Product Development, Materials and Field Testing. Why? The expectation is to create the best feeling and performing product possible. Experts with a combined 50+ years of experience designing gloves were partnered with one of the top baseball glove manufacturers in the world. This collection of tribal knowledge dedicated themselves to identifying the best materials, preferred patterns, and master craftsmen to entrust with this important product launch. The result born is Under Armour's Flawless line of fielding gloves.

Top 5% Japanese tanned Steer hide shells, world-class Pittard's leather palm lining, and extensive hand shaping by expert glove technicians combine to create the perfect balance of comfort and long-lasting performance.



**UA FGFL-1150I**

11.5" | I-WEB | RHT



BLK/CME

CRM/BLK

**UA FGFL-1175SP**

11.75" | SINGLE POST | RHT



BLK/CME

CRM/BLK

**UA FGFL-1175MT**

11.75" | MOD TRAP | RHT / LHT



BLK/CME

**UA FGFL-12002P**

12" | CLOSED WEB | RHT



BLK/CME

CRM/BLK

**UA FGFL-1275H**

12.75" | H-WEB | RHT / LHT



CRM/BLK

**UA FGFL-FB**

13" | FIRST BASE | RHT / LHT



BLK/CME

**UA FGFL-CM**

34" | CATCHER | RHT

# UA GENUINE PRO 2.0 GLOVES

\$300.00

FIRST SHIP: C/O

- Newly developed, Japanese tanned 306T leather
- Tighter grain pattern increases overall strength
- Full-Grain hide contain the entire grain featuring finer, more densely packed fibers
- Softer hand elevates the feel
- Professional level felt inserts improve the glove's responsiveness to break-in and helps retain shape over the course of a season(s)
- 7.5FF (factory forming) initiates the first 25% of the standard break-in process allowing the player to quickly get the glove to game-ready
- Persistent development has evolved key components making Genuine Pro 2.0 even more of a defensive game changer



BLK/WHT/CME CRM/BLK/CME

**UAFGGP2-1275H**

12.75" | H-WEB | RHT / LHT



BLK/CME

**UAFGGP2-12002P**

12" | 2-PIECE | RHT / LHT



BLK/CME CRM/BLK/CME

**UAFGGP2-1175MT**

11.75" | MOD TRAP | RHT / LHT



BLK/WHT/CME

**UAFGGP2-1175SP**

11.75" | SINGLE POST | RHT



BLK/WHT/CME CRM/BLK/CME

**UAFGGP2-1150I**

11.5" | I-WEB | RHT



BLK/CME

**UAFGGP2-CM**

34" | CATCHER | RHT



CRM/BLK/CME

**UAFGGP2-FB**

13" | SINGLE POST | RHT / LHT





Men's Armourfuse® Training gear is offered in customizable designs for tees, shorts, and baselayer. Available in compression and loose fits. Ideal for training days, travel, shooting shirts, tournaments, and game uniforms across all sports.

# ARMOURFUSE

- Brilliant, vibrant team colors permanently fused directly into textiles
- Limitless customization, all-inclusive pricing with exclusive UA designs and customized prints
- 37 different colors and 16 prints available
- 6 piece minimum order



## AF TRAINING HOODY

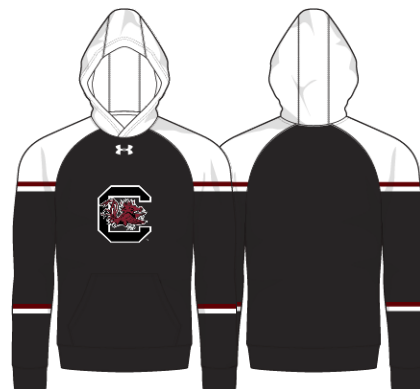
XS-2XL, OVERSIZE 3XL-4XL, YSM-YXL

HOODY	SIZE	PRICE
UJGSLHM (M)	XS-2XL	\$118.00
UJGSLHY (Y)	YSM-YXL	\$108.00

OVERSIZED SURCHARGE +\$5 PER SIZE  
ADDITIONAL LENGTH OPTIONS FOUND ON PAGE 65



SPRINT



UA VITAL



UA ECLIPSE



SCOUT



## AF LIGHTWEIGHT LONGSLEEVE HOODED SHOOTER

XS-2XL, OVERSIZE 3XL-4XL, YSM-YXL

HOODY	SIZE	PRICE
UJGTHLM (M)	XS-2XL	\$100.00
UJGTHLY (Y)	YSM-YXL	\$90.00

OVERSIZED SURCHARGE +\$5 PER SIZE  
ADDITIONAL LENGTH OPTIONS FOUND ON PAGE 65



**SPRINT**

## AF LIGHTWEIGHT SLEEVELESS HOODED SHOOTER

XS-2XL, OVERSIZE 3XL-4XL

HOODY	SIZE	PRICE
UJGTHSM (M)	XS-2XL	\$85.00

OVERSIZED SURCHARGE +\$5 PER SIZE  
ADDITIONAL LENGTH OPTIONS FOUND ON PAGE 65



**SPRINT**

## AF SHORTSLEEVE ¼ ZIP

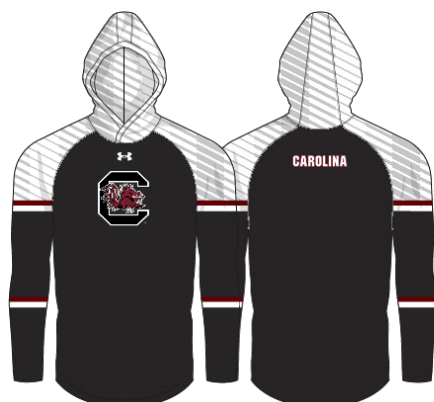
XS-2XL, OVERSIZE 3XL-4XL

¼ ZIP	SIZE	PRICE
UJGQZSM (M)	XS-2XL	\$95.00

OVERSIZED SURCHARGE +\$5 PER SIZE  
ADDITIONAL LENGTH OPTIONS FOUND ON PAGE 65  
6



**SPRINT**



UA VITAL



UA ECLIPSE



SCOUT



UA VITAL



UA ECLIPSE



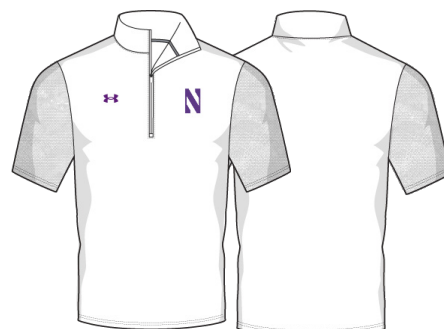
SCOUT



UA VITAL



UA ECLIPSE



SCOUT



# AF TRAINING ¼ ZIP

XS-2XL, OVERSIZE 3XL-4XL

¼ ZIP  
UJGQZPM (M) XS-2XL \$93.00

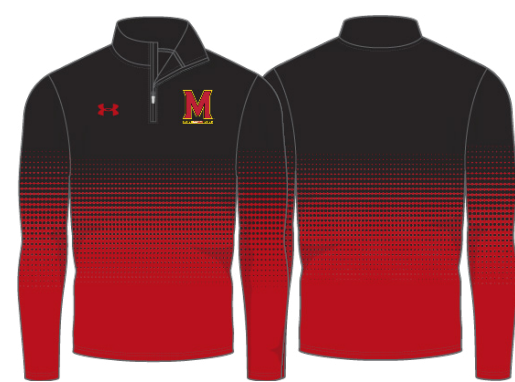
OVERSIZED SURCHARGE +\$5 PER SIZE  
ADDITIONAL LENGTH OPTIONS FOUND ON PAGE 65



SPRINT



UA VITAL



UA ECLIPSE



SCOUT

# AF TRAINING SS & LS T

XS-2XL, OVERSIZE 3XL-4XL,  
YSM-YXL

## LOOSE SST

UJGSIM (M)	XS-2XL	\$58.00
UJGSY (Y)	YSM-YXL	\$53.00

## LOOSE LST

UJGLIM (M)	XS-2XL	\$63.00
UJGLY (Y)	YSM-YXL	\$58.00

OVERSIZED SURCHARGE +\$5 PER SIZE  
ADDITIONAL LENGTH OPTIONS FOUND ON PAGE 65



SPRINT



UA VITAL



UA ECLIPSE



SCOUT



# AF TRAINING SHORTS

XS-2XL, OVERSIZE 3XL-4XL, YSM-YXL

## POCKETED SHORT

UJGS2PM (M)	XS-2XL	\$63.00
UJGS2PY (Y)	YSM-YXL	\$58.00

## NON-POCKETED SHORT

UJGS2M (M)	XS-2XL	\$58.00
UJGS2Y (Y)	YSM-YXL	\$53.00

9" INSEAM FOR POCKETED AND NON-POCKETED SHORT  
OVERSIZED SURCHARGE +\$5 PER SIZE  
ADDITIONAL LENGTH OPTIONS FOUND ON PAGE 65



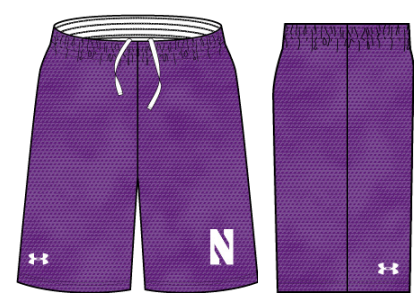
SPRINT



UA VITAL



UA ECLIPSE



SCOUT



# AF TRAINING COMPRESSION SLEEVELESS

XS-2XL, OVERSIZE 3XL-4XL

COMPRESSION  
SLEEVELESS

UIGCBL (M)	XS-2XL	\$63.00
------------	--------	---------

OVERSIZED SURCHARGE +\$5 PER SIZE  
ADDITIONAL LENGTH OPTIONS FOUND ON PAGE 65



UA VITAL



UA ECLIPSE



SCOUT



## AF TRAINING COMPRESSION HALF SLEEVE

XS-2XL, OVERSIZE 3XL-4XL

COMPRESSION  
HALF SLEEVE

UIGHBL (M)	XS-2XL	\$68.00
------------	--------	---------

OVERSIZED SURCHARGE +\$5 PER SIZE  
ADDITIONAL LENGTH OPTIONS FOUND ON PAGE 65



UA VITAL

## AF TRAINING COMPRESSION SHORTSLEEVE

XS-2XL, OVERSIZE 3XL-4XL

COMPRESSION SS

UJGTBL (M)	XS-2XL	\$63.00
------------	--------	---------

OVERSIZED SURCHARGE +\$5 PER SIZE  
ADDITIONAL LENGTH OPTIONS FOUND ON PAGE 65



UA ECLIPSE

## AF TRAINING COMPRESSION LONGSLEEVE

XS-2XL, OVERSIZE 3XL-4XL

COMPRESSION LS

UJGCLS (M)	XS-2XL	\$73.00
------------	--------	---------

OVERSIZED SURCHARGE +\$5 PER SIZE  
ADDITIONAL LENGTH OPTIONS FOUND ON PAGE 65



SCOUT

## SHORTSLEEVE

## LONGSLEEVE



UA VITAL



UA VITAL



UA ECLIPSE



UA ECLIPSE



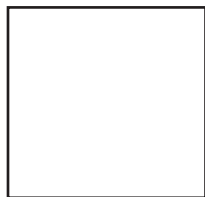
SCOUT



SCOUT



# ARMOUR FUSE



WHITE



BLACK



MIDNIGHT NAVY



UNIVERSITY RED



ROYAL



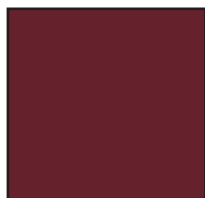
FOREST GREEN



TEAM KELLY GREEN



MAROON



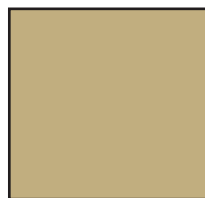
CARDINAL



DARK ORANGE



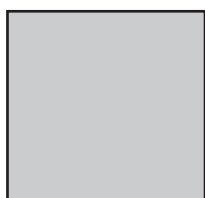
STEELTOWN GOLD



TEAM VEGAS GOLD



PURPLE



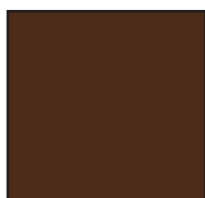
SILVER GRAY



GRAPHITE



CAROLINA BLUE



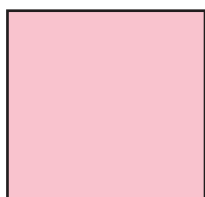
CLEVELAND BROWN



TEXAS ORANGE



COASTAL TEAL



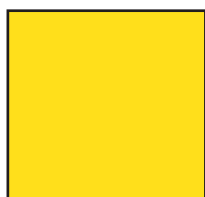
PINK



POISON



CAPRI



TAXI



BASEBALL GRAY



OCEAN STORM



TENNESSEE ORANGE



GRAYSTONE



MIAMI TEAL



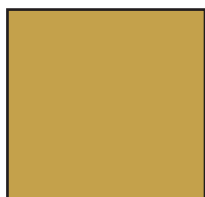
SEA GLASS



POWDERKEG BLUE



ELECTRIC BLUE

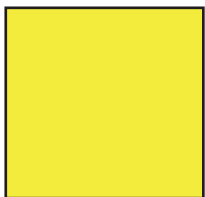


GOLD RUSH

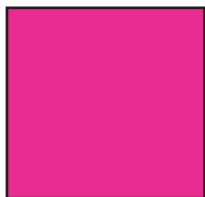


TROPIC PINK

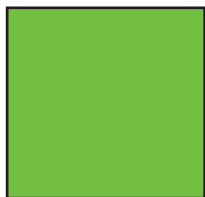
**FLUORESCENTS**  
NOT CURRENTLY AVAILABLE IN TONAL  
PRINTS OR ON GAMEDAY SELECT PRODUCT



YELLOW FLUORESCENT



PINK FLUORESCENT



GREEN FLUORESCENT



ORANGE FLUORESCENT

## HEATHER COLOR OFFERING

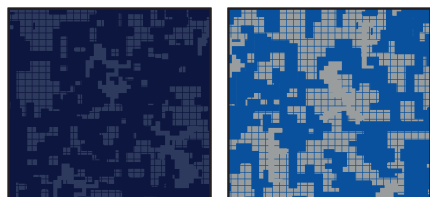
Offered exclusively on "Vital" and "Scout" Designs on ArmourFuse Training product (see pages 50-59)

Swatches available through your ArmourFuse business Customer Service Rep

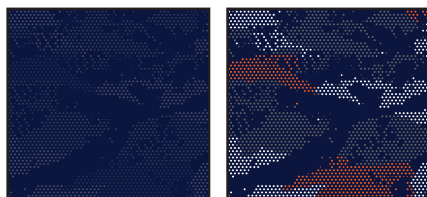


# ARMOUR FUSE

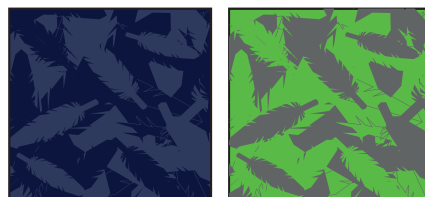
Prints available in all ArmourFuse colors. (Fluorescents not currently available in tonal prints)



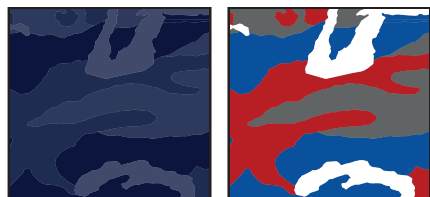
DIGITAL CAMO



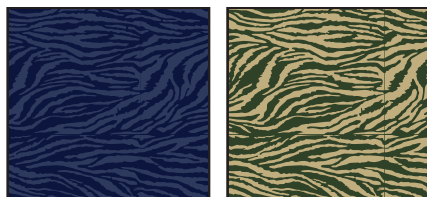
PIXEL CAMO



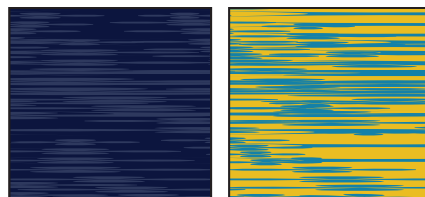
WINGS



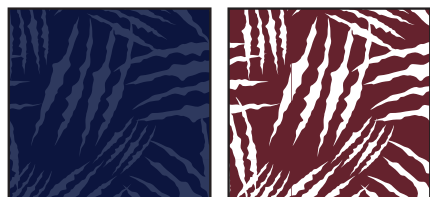
WOODLAND CAMO



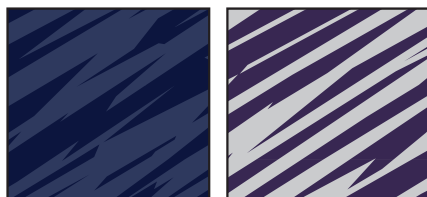
BENGAL



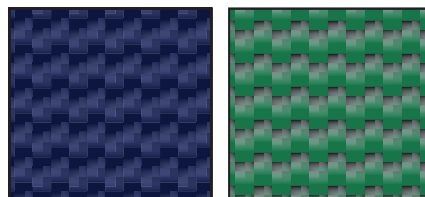
BLUR



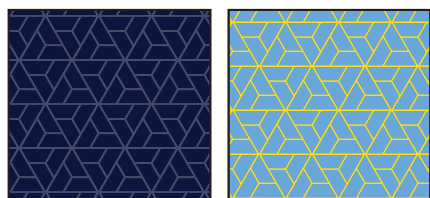
CLAW



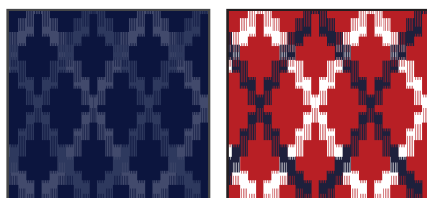
SPLINTER



CARBON WEAVE



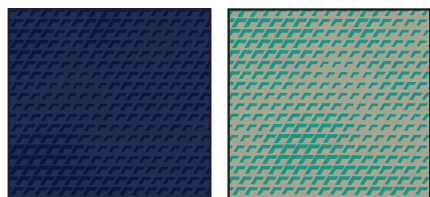
RAZOR



TOTEM

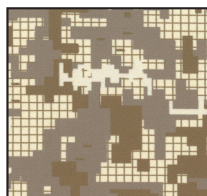


TREAD

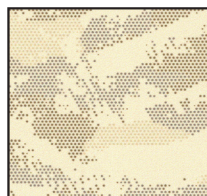


SCALE

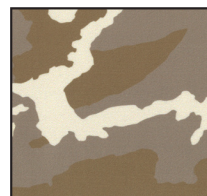
DESERT CAMO  
LOCKED COLOR COMBINATIONS,  
CANNOT BE ALTERED



DESERT  
DIGITAL CAMO



DESERT  
PIXEL CAMO



DESERT  
WOODLAND CAMO



## FONT OPTIONS

### BADGER

ABCDEFGHIJKLMNOPQRSTUVWXYZ  
0123456789

### COMBINE

ABCDEFGHIJKLMNOPQRSTUVWXYZ  
0123456789

### BEARCAT

ABCDEFGHIJKLMNOPQRSTUVWXYZ  
0123456789

### CADET

ABCDEFGHIJKLMNOPQRSTUVWXYZ  
0123456789

### HIGHLIGHT

ABCDEFGHIJKLMNOPQRSTUVWXYZ  
0123456789

### TERRAFONT

ABCDEFGHIJKLMNOPQRSTUVWXYZ  
0123456789

### PREMIER

ABCDEFGHIJKLMNOPQRSTUVWXYZ  
0123456789

### TIFFANY

ABCDEFGHIJKLMNOPQRSTUVWXYZ  
0123456789

### FULL BLOCK

ABCDEFGHIJKLMNOPQRSTUVWXYZ  
0123456789

### UNDENIABLE

ABCDEFGHIJKLMNOPQRSTUVWXYZ  
0123456789

### FALCON

ABCDEFGHIJKLMNOPQRSTUVWXYZ  
0123456789

### PLAIN BLOCK

ABCDEFGHIJKLMNOPQRSTUVWXYZ

### ATHLETIC SCRIPT

ABCDEFGHIJKLMNOPQRSTUVWXYZ  
abcdefghijklmnopqrstuvwxyz

### CLASSIC SCRIPT

ABCDEFGHIJKLMNOPQRSTUVWXYZ  
abcdefghijklmnopqrstuvwxyz

### NOTE:

- Gameday Select Package Pricing now includes all of the above listed fonts
- Dropped fonts available for fill-in orders only

## STOCK DECORATION OPTIONS

SCREEN PRINT	ONE COLOR	TWO COLORS
Team Name	\$5.00	\$10.00
Team Mascot/Logo	\$5.00	\$10.00
Front + Back Numbers	\$10.00	\$15.00

TWILL	ONE COLOR	TWO COLORS
Team Name	\$20.00	\$25.00
Front + Back Numbers	\$25.00	\$30.00
Player Names	\$20.00	
ArmourFuse Twill Patch (Max 3"x3")	\$10.00	\$10.00

EMBROIDERY	ONE COLOR	TWO COLORS
Team Name (up to 2")	\$10.00	\$10.00
see page 65 for Embroidered Mascot/Logo pricing		

### ADDITIONAL STOCK OPTIONS & NOTES

- Player Numbers Per Location = 1/2 of above
- "Front + Back Numbers" pricing
- Player Name Directly On Jersey Only (No Nameplates)
- ArmourFuse Twill = Twill Pricing +\$10
- Add Tail to Script Font Twill Team Name +\$10
- Add Embroidery to Twill Tail +\$10
- Non-Stock designs and lettering may require additional charge at Under Armour's discretion (call for quote)

## LETTERING ARRANGEMENTS

STRAIGHT

ARCHED

BRIDGED

VERTICAL ARCH

*Athletic Script*

*Classic Script*

## GAMEDAY SELECT OPTIONS

3/16" 1-COLOR PIPE				
				
WHITE	BASEBALL GRAY	BLACK	MIDNIGHT NAVY	UNIVERSITY RED
				
ROYAL	FOREST GREEN	MAROON	PURPLE	DARK ORANGE
				
STEELTOWN GOLD	TEAM KELLY GREEN	CARDINAL	TEAM VEGAS GOLD	CAROLINA BLUE
				
CLEVELAND BROWN	TEAL	TEXAS ORANGE	SILVER GRAY	GRAPHITE

1/2" 3-COLOR BRAID		
1	2	3

ANY COMBO  
OF PIPE COLORS

### INCLUDED PIPE/BRAID

#### 1. Jersey Front

Around Neck

OR

Around Placket

OR

None

#### 2. Jersey Sleeves

Sleeve Ends

OR

None

#### 3. Pants

Down Side

OR

None

### OPTIONAL PANT ALTERATIONS

	LIST PRICE
Reduce Knicker Inseam 2" and Hem w/ Elastic	\$0.00
Increase Knicker Inseam 2" and Hem w/ Elastic	\$0.00
Increase Knicker Inseam 4" and Hem w/ Elastic*	\$15.00
Reduce Relaxed/Tapered Inseam 2" and Hem	\$0.00
Increase Relaxed/Tapered Inseam 2" and Hem	\$0.00
Increase Relaxed/Tapered Inseam 4" and Hem*	\$15.00

### OPTIONAL ARMOURFUSE® TWILL (L X H)

	LIST PRICE
Custom Team Name (Max. 14" x 4.25")	\$10.00
Custom Left Chest Team Logo (Max. 4" x 5")	\$10.00
Custom Sleeve Patch (Max. 4" x 4")	\$10.00
Custom Back Neck Patch (Max. 3" x 2")	\$10.00
Player Name (On Nameplate)	\$35.00
Player Name Directly on Jersey (No Nameplate)	\$25.00
Blank Nameplate	\$6.00
3-Color Twill Team Name	\$5.00
3-Color Twill Numbers (per location)	\$5.00
Add Tail to Script Font Team Name	\$10.00
Add Text to Script Font Tail	\$10.00

**Note:** Vector art must be provided for custom Armourfuse® Twill or additional artwork charges will apply

\*Available on Men's styles only






















## STOCK OPTIONS

3/16" 1-COLOR PIPE	LIST PRICE
Around Placket (UBJ316P)	\$15.00
Sleeve Ends (UBJ316S)	\$15.00
Down Side (UBP316D)	\$15.00

1/2" 3-COLOR BRAID	LIST PRICE
Around Placket (UBJ12AP)	\$15.00
Around Neck (UBJ12NB)	\$15.00
Sleeve Ends (UBJ12SE)	\$15.00
Down Sides (UBP12DS)	\$15.00

**NOTE:** Additional leadtime should be expected for orders including piping, braiding and/or hemming. Please contact a UA Sale Rep for updates.

### PIPE & BRAID AVAILABLE COLORS

Pipe 3/16"						
	WHITE	BLACK	MIDNIGHT NAVY	UNIVERSITY RED	ROYAL	FOREST GREEN
Braid 1/2"						
	MAROON	PURPLE	DARK ORANGE	CARDINAL	TEAM VEGAS GOLD	
						
	BK/WH/BK	NA/WH/NA	SC/WH/SC	RO/WH/RO		
						
	DG/WH/DG	MA/WH/MA	PU/WH/PY	OR/WH/OR		
						
	CA/WH/CA	VG/WH/VG				

## ADDITIONAL LENGTH OPTIONS (ARMOURFUSE ONLY - FREE OF CHARGE)

### BASEBALL/SOFTBALL

TYPE	ADJUSTMENT	CODE
JERSEYS	Add 2" body length	UIX2BDY
	Add 4" body length	UIX4BDY

### FOOTBALL

TYPE	ADJUSTMENT	CODE
JERSEYS	Shorten to waist length	
PANTS	Add 2" to inseam length	UIX2INS

### LACROSSE/ FIELD HOCKEY

TYPE	ADJUSTMENT	CODE
JERSEYS	Add 2" body length	UIX2BDY
SHORTS	Subtract 1" from inseam	UISHTN1
	Subtract 2" from inseam	UISHTN2
	Add 1" to inseam length	UIXIINS
	Add 2" to inseam length	UIX2INS
KILTS	Add 1" to inseam length	UIXIINS
	Add 2" to inseam length	UIX2INS

### BASKETBALL

TYPE	ADJUSTMENT	CODE
JERSEYS	Add 2" body length	UIX2BDY
	Add 4" body length	UIX4BDY
	Add 6" body length	UIX6BDY
SHORTS	Subtract 1" from inseam	UISHTN1
	Add 1" to inseam length	UIXIINS
	Add 2" to inseam length	UIX2INS
	Add 3" to inseam length	UIX3INS
SHOOTING SHIRTS	Add 2" body, 1" sleeve	UIX2B1S
	Add 4" body, 2" sleeve	UIX4B2S
	Add 6" body, 3" sleeve	UIX6B3S

### SOCCER

TYPE	ADJUSTMENT	CODE
JERSEYS	Add 2" body length	UIX2BDY
SHORTS	Subtract 1" from inseam	UISHTN1
	Subtract 2" from inseam	UISHTN2
	Add 1" to inseam length	UIXIINS
	Add 2" to inseam length	UIX2INS

### TRACK & FIELD

TYPE	ADJUSTMENT	CODE
JERSEYS	Add 2" body length	UIX2BDY
LOOSE SHORTS*	Subtract 1" from inseam	UISHTN1
	Add 1" to inseam length	UIXIINS

\*UITS2M & UITS2W ONLY

### TRAINING

TYPE	ADJUSTMENT	CODE
JERSEYS	Add 2" body length	UIX2BDY
	Add 4" body length	UIX4BDY
	Add 6" body length	UIX6BDY
SHORTS	Subtract 1" from inseam	UISHTN1
	Subtract 2" from inseam	UISHTN2
	Add 1" to inseam length	UIXIINS
	Add 2" to inseam length	UIX2INS
	Add 3" to inseam length	UIX3INS

### VOLLEYBALL

TYPE	ADJUSTMENT	CODE
JERSEYS	Add 2" body length	UIX2BDY
SHORTS	Subtract 1" from inseam	UISHTN1
	Subtract 2" from inseam	UISHTN2

## EMBROIDERY

### MASCOTS (STOCK ONLY) LIST PRICE

Mascot	\$11.00
Mascot with One Line	\$12.00
Mascot with Two Lines	\$13.00
American Flag	\$11.00
Small/Homeplate	\$6.00

### DIGITIZING (STOCK AND ARMOURFUSE ONLY) LIST PRICE

Stock Designs and Lettering	\$180.00
Custom Logos	Call for Quote










- Prices are based upon size of designs, not the number of colors. Prices are subject to change if design exceeds specifications.
- Dimensions are maximum space - unless specifically noted best judgement will be used.
- Letter styles are available horizontal or arched.
- No digitizing charge for team names.

- Flag size up to 2" by 3" (bigger area - call for quote)
- Minimum order charges apply for embroidery
- All designs require an additional digitizing charge, except:
  - 1) Digitized designs supplied on a disk
  - 2) Digitized design is a re-order of an existing design

## STANDARD SLEEVE PRINT STRIPES

\*OPTIONS - Code numbers listed below stripe patterns

\*Stripes may be adjusted to fit smaller garments and not measure exactly as shown.

				
01	02	03	04	05
				
06	07	08	09	



## ARMOURFUSE® GRAPHIC OPTIONS



## TEAM TRAINING



STYLE NAME	GENDER	STYLE#	UA ECLIPSE	UA VITAL	SCOUT
HOODY	MEN'S	UJGSLHM	X	X	X
	WOMEN'S	UJGSLHW	X	X	X
	YOUTH	UJGSLHY	X	X	X
1/4 ZIP	MEN'S	UJGQZPM	X	X	X
	WOMEN'S	UJGHZPW	X	X	X
LOOSE SHORTSLEEVE	MEN'S	UJGSIM	X	X	X
	WOMEN'S	UJGSIW	X	X	X
	YOUTH	UJGSIY	X	X	X
LOOSE LONGSLEEVE	MEN'S	UJGLIM	X	X	X
	WOMEN'S	UJGLIW	X	X	X
	YOUTH	UJGLIY	X	X	X
COMPRESSION SLEEVELESS	MEN'S	UJGCBL	X	X	X
COMPRESSION SHORTSLEEVE	MEN'S	UJGTBL	X	X	X
COMPRESSION 1/2 SLEEVE	MEN'S	UJGHBL	X	X	X
COMPRESSION LONGSLEEVE	MEN'S	UJGCLS	X	X	X
POCKETED SHORT	MEN'S	UJGS2PM	X	X	X
	WOMEN'S	UJGS2PW	X	X	X
	YOUTH	UJGS2PY	X	X	X
NON-POCKETED SHORT	MEN'S	UJGS2M	X	X	X
	WOMEN'S	UJGS2W	X	X	X
	YOUTH	UJGS2Y	X	X	X



**GAMEDAY SELECT TEAM UNIFORMS**  
ORDERING INFORMATION AND CUSTOMER SERVICE:  
1-800-474-6118  
www.uacustomuniforms.com



**ARMOURFUSE TEAM UNIFORMS**  
ORDERING INFORMATION AND CUSTOMER SERVICE:  
1-800-594-9082  
www.underarmourteamuniforms.com



**UA NEXT**  
ORDERING INFORMATION AND CUSTOMER SERVICE:  
1-800-594-9082  
www.underarmourteamuniforms.com



**STOCK TEAM UNIFORMS**  
ORDERING INFORMATION AND CUSTOMER SERVICE:  
1-800-594-9082  
www.underarmourteamuniforms.com

## ORDERING INFORMATION

### Guarantee:

The materials and workmanship of our garments are guaranteed when given fair treatment and used under normal conditions.

### Color Matching:

Scientifically, it is not possible to achieve a perfect color match from one dye lot to another. Therefore, we cannot guarantee a perfect match from order to order or from one fabric to another.

### Color Abbreviation Key:

The following abbreviations may be used when ordering merchandise.

<b>BG</b> Baseball Gray	<b>EB</b> Electric Blue	<b>PI</b> Pink	<b>SI</b> Silver Grey
<b>BK</b> Black	<b>GP</b> Graphite	<b>PK</b> Powderkeg Blue	<b>TA</b> Taxi
<b>BR</b> Brown	<b>KE</b> Team Kelly Green	<b>PO</b> Poison	<b>TE</b> Teal
<b>CA</b> Cardinal	<b>LG</b> Steeltown Gold	<b>PU</b> Purple	<b>TO</b> Texas Orange
<b>CB</b> Carolina Blue	<b>MA</b> Maroon	<b>RO</b> Royal	<b>TP</b> Tropic Pink
<b>CP</b> Capri	<b>NA</b> Midnight Navy	<b>RU</b> Gold Rush	<b>VG</b> Team Vegas Gold
<b>DG</b> Forest Green	<b>OR</b> Dark Orange	<b>SC</b> University Red	<b>WH</b> White

### Price Policy:

All catalog prices are list or suggested retail. Prices are subject to change without notice. Merchandise will be invoiced based on the prices in effect at the time the order is placed.

### Terms:

Prices are FOB shipping point. Payment is due Net 30.

### Minimum Order Charges:

A handling charge of \$10.00 will be added to orders of less than \$150.00 list. Custom and GamedaySelect fill-in minimum order is 6 units per style and color. A 100% surcharge will be applied to orders of 1-2 units, and a 50% surcharge for orders of 3-5 units.

### Lettered Orders for COD Shipment:

A 50% deposit is required on all lettered orders calling for COD shipment.

### Delivery:

Shipments will always be made by the fastest, least expensive means possible. The customer will assume any additional expense required to expedite delivery.

### Order Cancellations:

Cancellations must be received at least one day prior to the ship date. Special order garments cannot be cancelled after they have been cut. Lettered garments cannot be cancelled after they have been printed or sewn.

### Returns:

Claims must be reported to our office within 10 working days of merchandise receipt. Returns cannot be made after 30 days of the invoice date. All returns for plain merchandise must be clearly marked with an authorization number or label obtained from our office. All returns for lettered merchandise must be clearly marked "LETTERING." When requesting an authorization label, the following information is required: Reason for return, Invoice #, Style #, Color, Size/Quantity. An authorization label will then be sent to you to prepare the merchandise for return shipment. We reserve the right to repair, replace or issue credit for any merchandise returned. A 15% restocking fee and shipping charges will be charged for merchandise returned that is either not damaged or the damage is determined not to be our fault. All worn garments must be properly laundered prior to return or they will not be accepted.

All custom and custom-stock uniforms may not be returned under any circumstances if delivered properly.

### Shortages:

All claims must be made within 10 days of the invoice date.

### New Accounts:

All new accounts must be opened through your local sales representative. New accounts that do not have a Dunn and Bradstreet rating will be shipped COD until a credit line has been established.

### Samples:

Samples will be entered and billed as a regular order. Samples cannot be returned without prior approval from our office.

### Imprint Orders:

All imprint orders must be emailed, mailed or faxed in with detailed instructions on UA order forms. Imprint orders will not be taken by phone. Once garments have been lettered, the order cannot be cancelled or returned.

Under Armour will not be responsible for any items not checked for order accuracy or sizing before being sent to a printer / screener. We will not be responsible for shrinkage, defects, or damages caused during the imprinting of our garments by sources other than our own lettering department. Screenprinting sublimated uniforms can cause color migration. We do not recommend screenprinting on sublimated garments.

Photography is the property of Under Armour and is not to be used without written authorization.

## UNIFORM CARE INSTRUCTIONS

To enhance the appearance and extend the life of your uniforms, Under Armour recommends that you follow these cleaning and storing procedures:

### DO NOT DRY CLEAN

### DO NOT WASH IN HOT WATER

### DO NOT USE CHLORINE BLEACH

### DO NOT USE FABRIC SOFTENER

### DO NOT WASH WHITES AND COLORS TOGETHER

### DO NOT OVERLOAD THE WASHING MACHINE

### DO NOT MACHINE DRY ON HIGH HEAT

### DO NOT LEAVE WET OR DAMP GARMENTS IN YOUR TRAVEL BAG, IN A PILE WITH OTHER CLOTHING OR IN WASHING MACHINE

- Pre wash uniform prior to use.
- Uniforms should always be laundered immediately after wearing. However, if this is not possible, rinse garments and hang individually on rust-proof hangers. (Moisture may cause color migration of acid dyes so we advise separating wet or damp uniforms.)
- Belts and any other contrasting color items should be washed separately from the garment.
- It is always advisable to test wash a single uniform according to directions before washing an entire load.
- Wash and rinse all garments in warm water (approx. 110°) with mild detergent. Remove promptly after wash cycle.
- For optimum results, hang garments (especially those with elastane) to dry. If you cannot hang dry, machine dry on the lowest setting. Turn jerseys inside out before machine drying. Remove items from dryer immediately upon completion of the cycle. (Excessive heat can cause fabric shrinkage, discoloration, and cracking and peeling of vinyl plastisol lettering inks.)
- Make sure uniforms are completely dry before storing. Store in a dry area to prevent mildew. Protect them from sunlight and fluorescent light to prevent yellowing.

**PLEASE NOTE:** Under Armour will not be responsible for uniforms that are damaged due to improper care and maintenance. Failure to follow our specified care instructions will void all guarantees.

## UNIFORM FILL-IN LIFECYCLE

LAST SHOWN IN CATALOG	LAST FILL-IN SEASON	LAST FILL-IN SHIP
SP'16	SP'19	6/15/2019
FA'16	FA'19	12/15/2019
WI'16	WI'19	3/15/2020
SP'17	SP'20	6/15/2020
FA'17	FA'20	12/15/2020
WI'17	WI'20	3/15/2021
SP'18	SP'21	6/15/2021
FA'18	FA'21	12/15/2021
WI'18	WI'21	3/15/2022
SP'19	SP'22	6/15/2022
FA'19	FA'22	12/15/2022
WI'19	WI'22	3/15/2023
SP'20	SP'23	6/15/2023
FA'20	FA'23	12/15/2023
WI'20	WI'23	3/15/2024
SP'21	SP'24	6/15/2024
FA'21	FA'24	12/15/2024
WI'21	WI'24	3/15/2025

## COMPRESSION

## FITTED

## LOOSE

# MEN'S



Ultra-tight, second skin fit that keeps you locked in & makes you feel like you can do anything.



A slimmer, athletic cut that allows total mobility but eliminates the bulk of extra fabric.



Fuller cut for complete comfort, total range of motion & greater breathability.

	US SIZE	CHEST (IN)	WAIST (IN)	HIP (IN)
SM	26-28	34-37	29-31	34-36
MD	30-32	37-41	31-34	36-39
LG	34-36	41-44	34-37	39-42
XL	38-40	44-48	37-41	42-46
2XL	42-44	48-52	41-45.5	46-50
3XL	46-48	52-56	45.5-50	50-54
4XL	50-52	56-60	50-54.5	54-58
5XL	54-56	60-64	54.5-59	58-62

## HOW TO MEASURE



**CHEST:** Place the tape measure under your arms at the fullest part of your chest, wrap around your body until your fingers meet and mark the measurement

**WAIST:** Measure around your natural waistline – right above your hips. Be careful not to squeeze too tight to allow a little give.

**HIPS:** With your feet together, measure around the fullest part of your hips to ensure you'll have enough room to move comfortably.

# BOYS

## FITTED

## LOOSE



A slimmer, athletic cut that allows total mobility but eliminates the bulk of extra fabric.



Fuller cut for complete comfort, total range of motion & greater breathability.

	US SIZE	CHEST (IN)	WAIST (IN)	HIP (IN)
YXS	7	25-26	23-24	26-27
YSM	8	26-27	24-25	27-28
YMD	10-12	27-29	25-27	28-31
YLG	14-16	29-32.5	27-30	31-34
YXL	18-20	32.5-35.5	30-33	34-37

## HOW TO MEASURE



**CHEST:** Place the tape measure under your arms at the fullest part of your chest, wrap around your body until your fingers meet and mark the measurement

**WAIST:** Measure around your natural waistline – right above your hips. Be careful not to squeeze too tight to allow a little give.

**HIPS:** With your feet together, measure around the fullest part of your hips to ensure you'll have enough room to move comfortably.



# WOMEN'S

## COMPRESSION



Ultra-tight, second skin fit that keeps you locked in & makes you feel like you can do anything.

## FITTED



Sits close to the skin for a streamlined fit without the squeeze of compression.

## LOOSE



Fuller, more generous cut for enhanced range of motion & an effortlessly relaxed fit.

	US SIZE	CHEST (IN)	WAIST (IN)	HIP (IN)
XS	0-2	32.5-33.5	25.5-27	34.5-36
S	4-6	33.5-36	27-29	36-38
M	8-10	36-38	29-31	38-40
L	12-14	38-41	31-34	40-43
XL	16	41-44	34-37	43-46
XXL	18	44-46.5	37-39.5	46-48.5

## HOW TO MEASURE



**CHEST:** Place the tape measure under your arms at the fullest part of your chest, wrap around your body until your fingers meet and mark the measurement

**WAIST:** Measure around your natural waistline – right above your hips. Be careful not to squeeze too tight to allow a little give.

**HIPS:** With your feet together, measure around the fullest part of your hips to ensure you'll have enough room to move comfortably.

# GIRLS

## FITTED



Sits close to the skin for a streamlined fit without the squeeze of compression.

## LOOSE



Fuller, more generous cut for enhanced range of motion & an effortlessly relaxed fit.

	US SIZE	CHEST (IN)	WAIST (IN)	HIP (IN)
YXS	7	25-26.5	23-24	26-28
YSM	8	26.5-27.5	24-24.5	28-29
YMD	10-12	27.5-30.5	24.5-26.5	29-32.5
YLG	14-16	30.5-34	26.5-30.5	32.5-36.5
YXL	18-20	34-36	30.5-32.5	36.5-38.5

## HOW TO MEASURE



**CHEST:** Place the tape measure under your arms at the fullest part of your chest, wrap around your body until your fingers meet and mark the measurement

**WAIST:** Measure around your natural waistline – right above your hips. Be careful not to squeeze too tight to allow a little give.

**HIPS:** With your feet together, measure around the fullest part of your hips to ensure you'll have enough room to move comfortably.

## WEST

**PAT BAUER**  
SR. REGIONAL MANAGER  
410.299.3798  
pbauer@underarmour.com  
WA // OR // MT // ID // AK

**JEFF UTTZ**  
626.484.3496  
jeffu@underarmour.com  
Southern & Central CA //  
Southern NV // HI

**MARC GUSTAFSON**  
303.828.7468  
mgustafson@underarmour.com  
UT // CO // WY //  
Western KS // Western NE

**MATT VALENTINE**  
415.307.1290  
mvalentine@underarmour.com  
Northern CA // NV

**DAN LAABES**  
602.882.7241  
dlaabes@underarmour.com  
AZ // NM // West TX

**GREG ROMINE**  
719.238.9244  
gromine@underarmour.com  
North TX (Dallas) // OK // Western AR

**MICHAEL SMITH**  
713.471.5378  
michael.smith@underarmour.com  
South TX

## CENTRAL

**BROCK PAALHAR**  
SR. REGIONAL MANAGER  
573.808.1010  
bpaalhar@underarmour.com  
IA // MN // ND // SD

**TONY DONOFRIO**  
419.356.9742  
tonyd@underarmour.com  
Northern IN // Northern OH //  
MI // Western PA

**FRANK WEBER**  
618.540.3955  
fweber@underarmour.com  
MO // Central & Eastern NE //  
Southern IL // Eastern KS

**JOHN WACHTEL**  
513.314.4024  
jwachtel@underarmour.com  
Southern IN // Southern OH // KY  
Eastern TN // WV

**MARC CALABRETTA**  
443.655.6768  
mcalabretta@underarmour.com  
Northern IL // IA // WI

**MONTE GIBBS**  
662.801.3039  
mgibbs@underarmour.com  
Central & Western TN // Panhandle FL //  
LA // AL // MS // Eastern AR

## EAST

**DAN WILLIAMS**  
352.672.1676  
dwilliams@underarmour.com  
FL (except Panhandle)

**ALEX BRUEGGEMANN**  
410.652.4337  
abrueggemann@underarmour.com  
GA // SC // NC

**GARY POWERS**  
410.746.3790  
gpowers@underarmour.com  
MD // VA // Washington DC

**FRANK NUNAN**  
484.576.9777  
fnunan@underarmour.com  
DE // NJ // Philadelphia area

**BOB BARTLETT**  
315.380.6505  
bobb@underarmour.com  
NY // Lax Specialty

**JAY KELLEHER**  
443.615.0462  
jkelleher@underarmour.com  
New England

## COLLEGIATE

**TOMMY AMICO**  
951.808.0367  
tamico@underarmour.com  
WEST

**TODD LOCKLEAR**  
410.454.6572  
tlocklear@underarmour.com  
EAST

## LICENSEES

**FOUNDER SPORT GROUP**  
Stock & Armourfuse Uniforms  
www.underarmourteamuniforms.com  
800.594.9082  
UAStatus@foundersportgroup.com

**POWERS ATHLETIC**  
Custom Uniforms  
www.uacustomuniforms.com  
800.474.6118  
customerservice@powersathletic.com

**THE GAME**  
Custom Headwear  
www.uateamheadwear.com  
800.723.5656  
Allison.Abbott@thegame.com

**USB**  
McDavid & Shock Doctor  
Water Bottles  
657.383.4438  
UA@unitedspb.com

**SAFILO**  
Eyewear  
uateamsportsorders@safilo.com



TEL: 1.888.828.1547 / B2B: ARMOURHOUSE.UNDERARMOUR.COM

### COLLEGIATE

TEAMSPO RTS COLLEGIATE / TEAMSPO RTS.COLLEGIATE@UNDERARMOUR.COM

### CENTRAL

TEAM SPORTS MW / TEAMSPORTSMW@UNDERARMOUR.COM

### EAST

TEAM SPORTS SE / TEAMSPORTSSE@UNDERARMOUR.COM  
TEAM SPORTS NE / TEAMSPORTSNE@UNDERARMOUR.COM

### WEST

TEAM SPORTS WC / TEAMSPORTSWC@UNDERARMOUR.COM  
TEAM SPORTS SW / TEAMSPORTSSW@UNDERARMOUR.COM

## CONTACT CENTER

Corporate Headquarters  
1020 Hull Street  
Baltimore, MD 21230

Under Armour® Apparel Returns  
1010 Swan Creek Drive  
Baltimore, MD 21226

UA Footwear/Accessories Returns  
2510 W. Walnut Avenue  
Rialto, CA 92376

### ALL TEAM SPORTS ORDERS AND QUESTIONS PLEASE USE THE FOLLOWING:

1.888.828.1547

### CORPORATE OFFICE HOURS OF OPERATION

Monday through Friday, 8:30am – 7:00pm, EST.

### UNDER ARMOUR® B2B – ONLINE ORDERING

[armourhouse.underarmour.com](http://armourhouse.underarmour.com)

- 24/7 access to check inventory and place orders
- Ability to track orders and shipments
- Priority product allocation
- Faster processing time

### UNDER ARMOUR® B2B – SUPPORT

[B2B\\_support@underarmour.com](mailto:B2B_support@underarmour.com)

### UNDER ARMOUR® RETURN POLICY

Under Armour® stands behind its gear and EXPECTS nothing less than perfection. If you have received a defective product, an incorrect size, or an incorrect order, please contact us immediately for a return authorization number so that we can quickly process your return and ensure your satisfaction.

ALL RETURNS MUST BE COMPLETED WITHIN 30 DAYS OF RECEIPT AND MUST BE IN REASONABLE CONDITION. ALL RETURNS MUST HAVE THE RA# CLEARLY MARKED ON THE CARTON. ALL RETURNS ARE SUBJECT TO A 15% RE-STOCKING FEE.

Should you need to return or exchange an item, you MUST include your RA#, a copy of your invoice, and an explanation in writing as to why you are returning the item. Send your return to the marked address on your pack list. If you are exchanging merchandise, you are responsible for the cost of returning the product. Original shipping costs are non-refundable. All returned merchandise must be received in new, resalable condition.

### UNDER ARMOUR® CANCELLATION POLICY

Any request for cancellation of an order for UA products must be made, in writing, through the customer's UA Sales Representative. A request to cancel an order must be made more than 30 days before the customer's original desired ship date. All cancellations are subject to UA approval.

### ALL PRICES SET FORTH HEREIN ARE SUBJECT TO CHANGE WITHOUT NOTICE.

© 2021 Under Armour®. All rights reserved. All trademarks, images, photographs, logos, and graphics are owned or controlled by Under Armour®.

Confidential and business proprietary information for internal Under Armour®, Inc. use only. Reproduction is strictly prohibited.



**UNDER ARMOUR® PERFORMANCE**  
SPRING/SUMMER 2022