



# HOCKEY

Winter 2022





UNDER ARMOUR

**THE ONLY  
WAY IS  
THROUGH.**





## **VISION**

---

**TO INSPIRE YOU WITH PERFORMANCE  
SOLUTIONS YOU NEVER KNEW  
YOU NEEDED BUT CAN'T IMAGINE  
LIVING WITHOUT.**

## **MISSION**

---

**UNDER ARMOUR  
MAKES YOU BETTER.**

## **HOCKEY** —

### **MEN'S/YOUTH**

- 002** HOCKEY UNIFORMS
- 012** HOCKEY PROTECTIVE
- 014** HOCKEY APPAREL
- 015** UNIFORM ORDERING INFO





# HOCKEY GAMEDAY SELECT

- New, cutting edge uniforms worn by the top collegiate hockey programs in the country
- Lightweight, moisture wicking knit fabrics provide ultimate comfort and breathability while maintaining optimum durability
- New, Gameday Select all-inclusive pricing.

**PRICING INCLUDES EITHER DECORATION PACKAGE:**

- Team name, front and back numbers, and sleeve numbers
- Large front logo, back numbers, and sleeve numbers
- Yoke logos available for additional \$30 per jersey

Nameplates available for surcharge



## UA SLAPSHOT JERSEY

SM-2XL

JERSEY	SIZE	PRICE
UH039JM (M)	SM-2XL	\$275.00
BLANK		\$240.00

### GOALIE JERSEY

UH039JMG (M)	SM-2XL	\$285.00
BLANK		\$250.00

- Lightweight knit fabric provides ultimate comfort while maintaining optimum durability
- Mesh underarm & back panels deliver strategic ventilation

WHT	SLG	GPH	BLK	PUR	MDN	RYL	FGR
TKG	DKO	RED	CRD	MAR	VGJ	SGD	

## UA SLAPSHOT SOCK

XS-XL

SOCK	SIZE	PRICE
UH040SM (M)	XS-XL	\$115.00

- Lightweight knit fabric provides ultimate comfort while maintaining optimum durability

WHT	SLG	GPH	BLK	PUR	MDN	RYL	FGR
TKG	DKO	RED	CRD	MAR	VGJ	SGD	



SLAPSHOT



BACK VIEW

BASE UNIFORM APPROVED FOR HS PLAY



GAMEDAY SELECT UNIFORMS // ORDERING INFORMATION AND CUSTOMER SERVICE: 1-800-474-6118 // [www.uacustomuniforms.com](http://www.uacustomuniforms.com)

FILL-IN LIFECYCLE TIMING FOUND ON PAGE 20. DECORATION OPTIONS AND ORDERING INFORMATION ARE AVAILABLE ON PAGES 15-20.



## UA PINNACLE LACE FRONT JERSEY

SM-2XL

JERSEY	SIZE	PRICE
UH025JM (M)	SM-2XL	\$275.00
BLANK		\$240.00

### GOALIE JERSEY

UH025JMG (M)	SM-2XL	\$285.00
BLANK		\$250.00

- Lightweight knit fabric provides ultimate comfort while maintaining optimum durability
- Mesh underarm & back panels deliver strategic ventilation
- Stripe options shown below are available in all Armourfuse colors

WHT	SLG	GPH	BLK	PUR	MDN	RYL	FGR
TKG	DKO	RED	CRD	MAR	VGD	SGD	

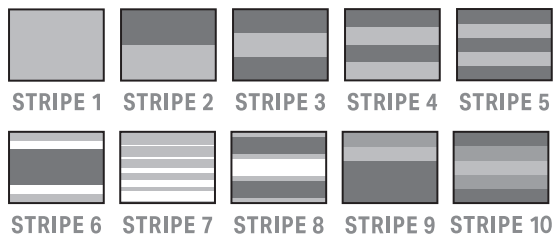
## UA PINNACLE SOCK

XS-XL

SOCK	SIZE	PRICE
UH016SM (M)	XS-XL	\$115.00

- Lightweight knit fabric provides ultimate comfort while maintaining optimum durability
- Stripe options shown below are available in all Armourfuse colors

WHT	SLG	GPH	BLK	PUR	MDN	RYL	FGR
TKG	DKO	RED	CRD	MAR	VGD	SGD	



PINNACLE LACE FRONT

BASE UNIFORM APPROVED FOR HS PLAY



## UA PINNACLE JERSEY

SM-2XL

JERSEY	SIZE	PRICE
UH022JM (M)	SM-2XL	\$275.00
BLANK		\$240.00
GOALIE JERSEY		
UH022JMG (M)	SM-2XL	\$285.00
BLANK		\$250.00

- Lightweight knit fabric provides ultimate comfort while maintaining optimum durability
- Mesh underarm & back panels deliver strategic ventilation
- Stripe options shown below are available in all Armourfuse colors

WHT	SLG	GPH	BLK	PUR	MDN	RYL	FGR
TKG	DKO	RED	CRD	MAR	VGJ	SGD	

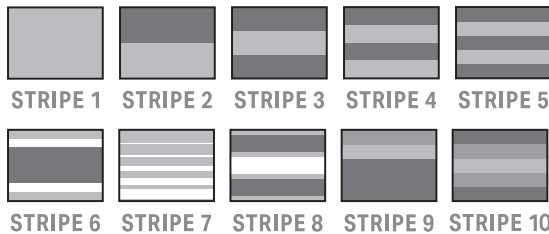
## UA PINNACLE SOCK

XS-XL

SOCK	SIZE	PRICE
UH016SM (M)	XS-XL	\$115.00

- Lightweight knit fabric provides ultimate comfort while maintaining optimum durability
- Stripe options shown below are available in all Armourfuse colors

WHT	SLG	GPH	BLK	PUR	MDN	RYL	FGR
TKG	DKO	RED	CRD	MAR	VGJ	SGD	



PINNACLE

BASE UNIFORM APPROVED FOR HS PLAY



GAMEDAY SELECT UNIFORMS // ORDERING INFORMATION AND CUSTOMER SERVICE: 1-800-474-6118 // [www.uacustomuniforms.com](http://www.uacustomuniforms.com)

FILL-IN LIFECYCLE TIMING FOUND ON PAGE 20. DECORATION OPTIONS AND ORDERING INFORMATION ARE AVAILABLE ON PAGES 15-20.



## UA VARSITY JERSEY

SM-2XL, YSM-YXL

JERSEY	SIZE	PRICE
UH051JM (M)	SM-2XL	\$185.00
BLANK		\$150.00
UH051JY (Y)	YSM-YXL	\$160.00

### GOALIE JERSEY

UH051JMG (M)	SM-2XL	\$195.00
BLANK		\$160.00
UH051JYG (Y)	YSM-YXL	\$170.00

- Pin dot mesh offers maximum breathability and comfort
- Stripe options shown below are available in all Armourfuse colors

WHT	VWH	SLG	BBG	BLK	PUR	MDN	RYL	VBL
FGR	TKG	DKO	RED	CRD	MAR	VGD	SGD	

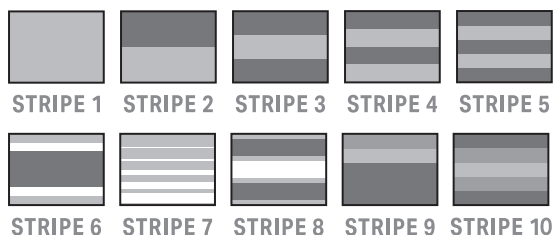
## UA VARSITY SOCK

SM-2XL, YSM-YXL

SOCK	SIZE	PRICE
UH052SM (M)	XS-XL	\$80.00
UH052SY (Y)	YSM-YXL	\$65.00

- Pin dot mesh offers maximum breathability and comfort
- Stripe options shown below are available in all Armourfuse colors

WHT	VWH	SLG	BBG	BLK	PUR	MDN	RYL	VBL
FGR	TKG	DKO	RED	CRD	MAR	VGD	SGD	



**Varsity**

BASE UNIFORM APPROVED FOR HS PLAY



GAMEDAY SELECT UNIFORMS // ORDERING INFORMATION AND CUSTOMER SERVICE: 1-800-474-6118 // [www.uacustomuniforms.com](http://www.uacustomuniforms.com)

FILL-IN LIFECYCLE TIMING FOUND ON PAGE 20. DECORATION OPTIONS AND ORDERING INFORMATION ARE AVAILABLE ON PAGES 15-20.

## UA BEANPOT JERSEY

SM-2XL

JERSEY	SIZE	PRICE
UH049JM (M)	SM-2XL	\$185.00
BLANK		\$150.00
GOALIE JERSEY		
UH049JMG (M)	SM-2XL	\$195.00
BLANK		\$160.00

- Pin dot mesh offers maximum breathability and comfort

WHT	VWH	SLG	BBG	BLK	PUR	MDN	RYL	VBL
FR	TKG	DKO	RED	CRD	MAR	VGD	SGD	

## UA BEANPOT SOCK

XS-XL

SOCK	SIZE	PRICE
UH050SM (M)	XS-XL	\$80.00

- Pin dot mesh offers maximum breathability and comfort

WHT	VWH	SLG	BBG	BLK	PUR	MDN	RYL	VBL
FR	TKG	DKO	RED	CRD	MAR	VGD	SGD	



BEANPOT

BASE UNIFORM APPROVED FOR HS PLAY



GAMEDAY SELECT UNIFORMS // ORDERING INFORMATION AND CUSTOMER SERVICE: 1-800-474-6118 // [www.uacustomuniforms.com](http://www.uacustomuniforms.com)

FILL-IN LIFECYCLE TIMING FOUND ON PAGE 20. DECORATION OPTIONS AND ORDERING INFORMATION ARE AVAILABLE ON PAGES 15-20.



## UA POWER PLAY JERSEY

SM-2XL

JERSEY	SIZE	PRICE
UH029JM (M)	SM-2XL	\$185.00
BLANK		\$150.00
GOALIE JERSEY		
UH029JMG (M)	SM-2XL	\$195.00
BLANK		\$160.00

• Pin dot mesh offers maximum breathability and comfort

WHT	VWH	SLG	BBG	BLK	PUR	MDN	RYL	VBL
FGR	TKG	DKO	RED	CRD	MAR	VGJ	SGD	

## UA POWER PLAY SOCK

XS-XL

SOCK	SIZE	PRICE
UH030SM (M)	XS-XL	\$80.00

• Pin dot mesh offers maximum breathability and comfort

WHT	VWH	SLG	BBG	BLK	PUR	MDN	RYL	VBL
FGR	TKG	DKO	RED	CRD	MAR	VGJ	SGD	



POWER PLAY



BACK VIEW

BASE UNIFORM APPROVED FOR HS PLAY

## GDS ARMOURFUSE® ENFORCER JERSEY

SM-2XL, YSM-YXL

JERSEY	SIZE	PRICE
UH031JM (M)	SM-2XL	\$175.00
UH031JY (Y)	YSM-YXL	\$140.00

### GOALIE JERSEY

UH031JMG (M)	SM-2XL	\$185.00
UH031JYG (Y)	YSM-YXL	\$150.00

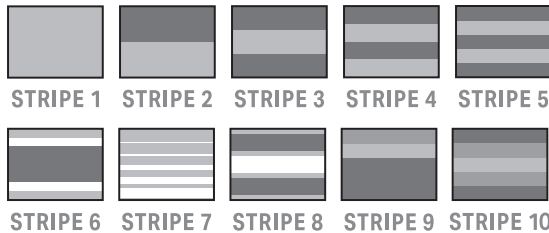
- Pin dot mesh offers maximum breathability and comfort
- Stripe options shown below are available in all Armourfuse colors

## GDS ARMOURFUSE® ENFORCER SOCK

SM-XL, YSM-YXL

SOCK	SIZE	PRICE
UH032SM (M)	SM-XL	\$90.00
UH032SY (Y)	YSM-YXL	\$80.00

- Pin dot mesh offers maximum breathability and comfort
- Stripe options shown below are available in all Armourfuse colors



BACK VIEW



ENFORCER

BASE UNIFORM APPROVED FOR HS PLAY



GAMEDAY SELECT UNIFORMS // ORDERING INFORMATION AND CUSTOMER SERVICE: 1-800-474-6118 // [www.uacustomuniforms.com](http://www.uacustomuniforms.com)

FILL-IN LIFECYCLE TIMING FOUND ON PAGE 20. DECORATION OPTIONS AND ORDERING INFORMATION ARE AVAILABLE ON PAGES 15-20.



## GDS ARMOURFUSE® BREAKAWAY JERSEY

SM-2XL

JERSEY	SIZE	PRICE
UH033JM (M)	SM-2XL	\$175.00

### GOALIE JERSEY

UH033JMG (M)	SM-2XL	\$185.00
--------------	--------	----------

- Pin dot mesh offers maximum breathability and comfort

## GDS ARMOURFUSE® BREAKAWAY SOCK

SM-XL

SOCK	SIZE	PRICE
UH034SM (M)	SM-XL	\$90.00

- Pin dot mesh offers maximum breathability and comfort



**BREAKAWAY**



BACK VIEW

BASE UNIFORM APPROVED FOR HS PLAY



GAMEDAY SELECT UNIFORMS // ORDERING INFORMATION AND CUSTOMER SERVICE: 1-800-474-6118 // [www.uacustomuniforms.com](http://www.uacustomuniforms.com)

FILL-IN LIFECYCLE TIMING FOUND ON PAGE 20. DECORATION OPTIONS AND ORDERING INFORMATION ARE AVAILABLE ON PAGES 15-20.

## UA PRACTICE JERSEY

SM-2XL

JERSEY	SIZE	PACKAGE	PRICE
UH035JM (M)	SM-2XL	BLANK	\$90.00
		DECORATED*	\$125.00
GOALIE JERSEY	SIZE	PACKAGE	PRICE
UH035JMG (M)	SM-2XL	BLANK	\$100.00
		DECORATED*	\$135.00

\*DECORATION PACKAGE INCLUDES TEAM NAME OR LOGO AND BACK NUMBERS

•Lightweight mesh

WHT	VWH	SLG	BBG	BLK	PUR	MDN	RYL	VBL
FGR	TKG	DKO	RED	CRD	MAR	VGD	SGD	

## UA PRACTICE SOCK

SM-XL

SOCK	SIZE	PRICE
UH036SM (M)	SM-XL	\$75.00

•Lightweight mesh

WHT	VWH	SLG	BBG	BLK	PUR	MDN	RYL	VBL
FGR	TKG	DKO	RED	CRD	MAR	VGD	SGD	



PRACTICE

BASE UNIFORM APPROVED FOR HS PLAY



GAMEDAY SELECT UNIFORMS // ORDERING INFORMATION AND CUSTOMER SERVICE: 1-800-474-6118 // [www.uacustomuniforms.com](http://www.uacustomuniforms.com)

FILL-IN LIFECYCLE TIMING FOUND ON PAGE 20. DECORATION OPTIONS AND ORDERING INFORMATION ARE AVAILABLE ON PAGES 15-20.



**1346376****ARMOUR® AIR LIPGUARD COLOR**

\$15.00 | OSFM

**1346377****ARMOUR® AIR LIPGUARD CHROME**

\$22.00 | OSFM

FIRST SHIP: C/O

**SHOCK DOCTOR TECHNOLOGIES**

- AirFlow 30mm Breathing channel provides smooth oxygen intake
- Integral bite pads provide a secure fit while providing protection against impact
- Lipguard protects upper and lower lips
- Instant fit-no boil, ready to go out of the package
- Convertible strap gives the option to work with a strap or without
- Works with Braces

100% POLYMER

\*Not eligible for Promo

POWERED BY:  SHOCK DOCTOR001  
BLK100  
WHT600  
RED400  
RYL099001  
CHROME SILVER777001  
CHROME GOLD

**1346372**

## GAMEDAY ARMOUR® PRO MOUTHGUARD

\$20.00 | OSFM

**YOUTH: 1346373** | \$20.00 | OSFM

FIRST SHIP: C/O

### SHOCK DOCTOR TECHNOLOGIES

- Multi-Layer Design — Protection and comfort in a low-profile structure
- Gel Fit Liner — Molds to teeth for comfortable, custom-like fit
- Integrated Jaw Pads — Offer added protection and support at impact
- Convertible Strap — Wear it strapped or strapless
- Boil and Bite — For custom-like fit
- Meets national and state high school rules

POWERED BY:  SHOCK DOCTOR



900  
TRANS/CBL



001  
BLK



600  
RED



400  
RYL

**1346370**

## GAMEDAY ARMOUR® BRACES - STRAPPED

\$22.00 | OSFM

**YOUTH: 1346371** | \$22.00 | OSFM

**1346927**

## GAMEDAY ARMOUR® BRACES - STRAPLESS

\$22.00 | OSFM

**YOUTH: 1346928** | \$22.00 | OSFM

FIRST SHIP: C/O

### SHOCK DOCTOR TECHNOLOGIES

- Specifically designed to conform to upper brace brackets for retention, comfort, and prevention from lacerations
- 100% Medical Grade Silicone adapts to changes in mouth structure as teeth adjust
- Instant fit-no boil, ready to go out of the package
- Strapped or Strapless

100% SILICONE

\*Not eligible for Promo

POWERED BY:  SHOCK DOCTOR



100  
TRANS GRAY



## APPAREL

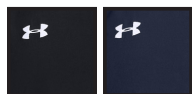
**1317185****UA M'S HOCKEY JACKET**\$75.00 | **LOOSE** | SM-2XL**YOUTH: 1317212** | \$70.00 | YXS-YXL

FIRST SHIP: C/O

- Wind and water resistant stretch woven shell
- Internal mesh lining
- Side zip pockets
- Fleece lined neck collar

**coldgear**

Y = YOUTH OFFERING



001Y 410Y  
BLK/WHT MDN/WHT

**PREBOOK ONLY**

32"  
INSEAM  
SIDE  
POCKETS

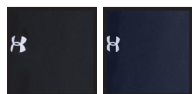
**1317187****UA M'S HOCKEY PANT**\$60.00 | **LOOSE** | SM-2XL**YOUTH: 1317214** | \$55.00 | YXS-YXL

FIRST SHIP: C/O

- Wind and water resistant stretch woven shell
- Internal mesh lining
- Side pockets and back zip pockets
- Side zip leg openings

**coldgear**

Y = YOUTH OFFERING

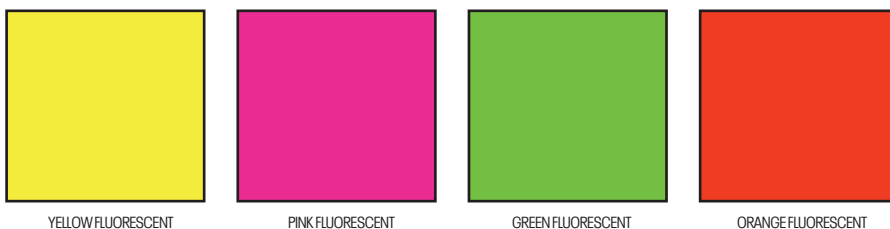


001Y 410Y  
BLK/WHT MDN/WHT

**PREBOOK ONLY**



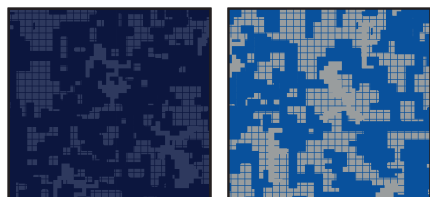
**FLUORESCENTS**  
NOT CURRENTLY AVAILABLE IN TONAL  
PRINTS OR ON GAMEDAY SELECT PRODUCT



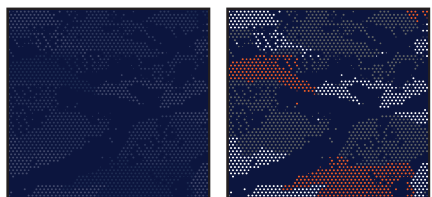


# ARMOUR FUSE

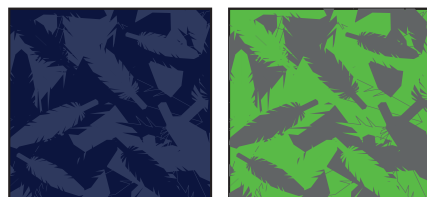
Prints available in all ArmourFuse colors. (Fluorescents not currently available in tonal prints)



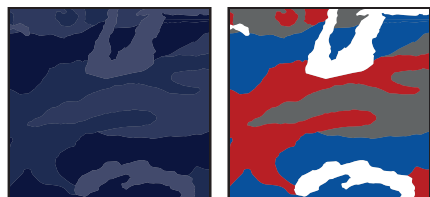
DIGITAL CAMO



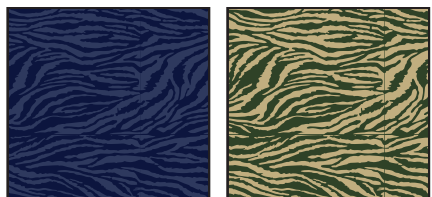
PIXEL CAMO



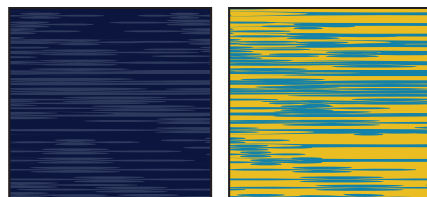
WINGS



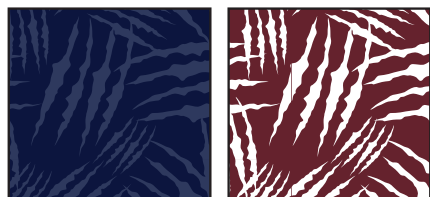
WOODLAND CAMO



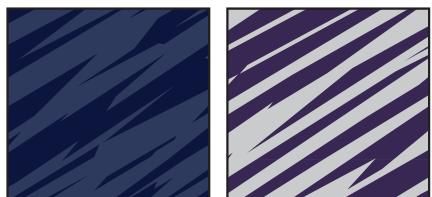
BENGAL



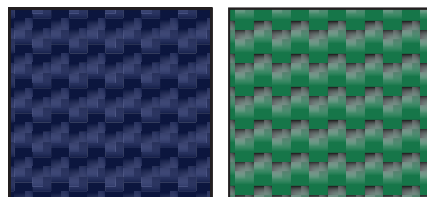
BLUR



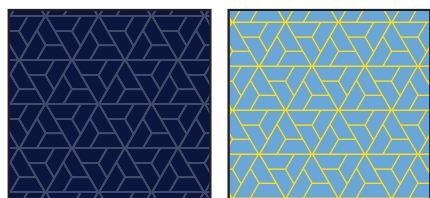
CLAW



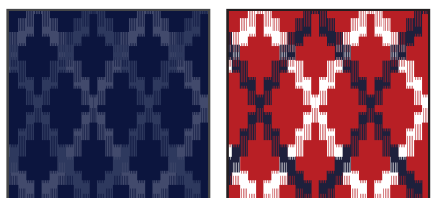
SPLINTER



CARBON WEAVE



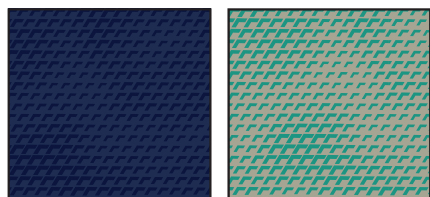
RAZOR



TOTEM

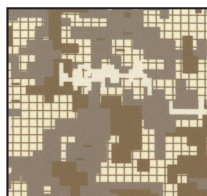


TREAD

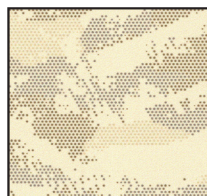


SCALE

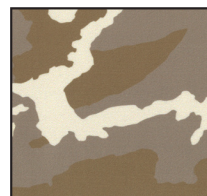
DESERT CAMO  
LOCKED COLOR COMBINATIONS,  
CANNOT BE ALTERED



DESERT  
DIGITAL CAMO



DESERT  
PIXEL CAMO



DESERT  
WOODLAND CAMO

## FONT OPTIONS

### BADGER

ABCDEFGHIJKLMNOPQRSTUVWXYZ  
0123456789

### COMBINE

ABCDEFGHIJKLMNOPQRSTUVWXYZ  
0123456789

### BEARCAT

ABCDEFGHIJKLMNOPQRSTUVWXYZ  
0123456789

### CADET

ABCDEFGHIJKLMNOPQRSTUVWXYZ  
0123456789

### HIGHLIGHT

ABCDEFGHIJKLMNOPQRSTUVWXYZ  
0123456789

### TERRAFONT

ABCDEFGHIJKLMNOPQRSTUVWXYZ  
0123456789

### PREMIER

ABCDEFGHIJKLMNOPQRSTUVWXYZ  
0123456789

### TIFFANY

ABCDEFGHIJKLMNOPQRSTUVWXYZ  
0123456789

### FULL BLOCK

ABCDEFGHIJKLMNOPQRSTUVWXYZ  
0123456789

### UNDENIABLE

ABCDEFGHIJKLMNOPQRSTUVWXYZ  
0123456789

### FALCON

ABCDEFGHIJKLMNOPQRSTUVWXYZ  
0123456789

### PLAIN BLOCK

ABCDEFGHIJKLMNOPQRSTUVWXYZ

### ATHLETIC SCRIPT

ABCDEFGHIJKLMNOPQRSTUVWXYZ  
abcdefghijklmnopqrstuvwxyz

### CLASSIC SCRIPT

ABCDEFGHIJKLMNOPQRSTUVWXYZ  
abcdefghijklmnopqrstuvwxyz

### NOTE:

- Gameday Select Package Pricing now includes all of the above listed fonts
- Dropped fonts available for fill-in orders only

## LETTERING ARRANGEMENTS

STRAIGHT

ARCHED

BRIDGED

VERTICAL ARCH

*Athletic Script*

*Classic Script*



## GAMEDAY SELECT OPTIONS

3/16" 1-COLOR PIPE				
				
WHITE	BASEBALL GRAY	BLACK	MIDNIGHT NAVY	UNIVERSITY RED
				
ROYAL	FOREST GREEN	MAROON	PURPLE	DARK ORANGE
				
STEELTOWN GOLD	TEAM KELLY GREEN	CARDINAL	TEAM VEGAS GOLD	CAROLINA BLUE
				
CLEVELAND BROWN	TEAL	TEXAS ORANGE	SILVER GRAY	GRAPHITE

### 1/2" 3-COLOR BRAID



ANY COMBO  
OF PIPE COLORS

### INCLUDED PIPE/BRAID

#### 1. Jersey Front

Around Neck

OR

Around Placket

OR

None

#### 2. Jersey Sleeves

Sleeve Ends

OR

None

#### 3. Pants

Down Side

OR

None

### OPTIONAL PANT ALTERATIONS

	LIST PRICE
Reduce Knicker Inseam 2" and Hem w/ Elastic	\$0.00
Increase Knicker Inseam 2" and Hem w/ Elastic	\$0.00
Increase Knicker Inseam 4" and Hem w/ Elastic*	\$15.00
Reduce Relaxed/Tapered Inseam 2" and Hem	\$0.00
Increase Relaxed/Tapered Inseam 2" and Hem	\$0.00
Increase Relaxed/Tapered Inseam 4" and Hem*	\$15.00

### OPTIONAL ARMOURFUSE® TWILL (L X H)

	LIST PRICE
Custom Team Name (Max. 14" x 4.25")	\$15.00
Custom Left Chest Team Logo (Max. 4" x 5")	\$15.00
Custom Sleeve Patch (Max. 4" x 4")	\$15.00
Custom Back Neck Patch (Max. 3" x 2")	\$15.00
Player Name (On Nameplate)	\$40.00
Player Name Directly on Jersey (No Nameplate)	\$30.00
Blank Nameplate	\$7.00
Add Tail to Script Font Team Name	\$15.00
Add Text to Script Font Tail	\$15.00

**Note:** Vector art must be provided for custom Armourfuse® Twill or additional artwork charges will apply

\*Available on Men's styles only

## CUSTOM HOCKEY TWILL DECORATION OPTIONS

### FULL BLOCK LETTERS & NUMBERS

	ONE COLOR	TWO COLORS
2"	\$4.50	\$6.50
3"	\$5.00	\$7.50
4"	\$5.50	\$8.50
5**	\$6.00	\$9.00
6"	\$6.50	\$10.00
7**	\$7.00	\$10.50
8"	\$7.50	\$11.00
10"	\$8.50	\$13.00
12"	\$9.50	\$15.00
Punctuations (Custom Only)	\$3.00	\$5.00

\*Available only in Custom/ArmourFuse

### NAME PLATES

	ONE COLOR
3.5" x 16" Sewn-on Nameplate with 3" Letters	\$46.00
Loose Sublimated Nameplate with Player Name	\$25.00
Loose Nameplate 3.5" x 16"	\$7.00

### SUBLIMATED TWILL FOR LOGOS AND MASCOTS: UP TO 4 COLORS

6" x 6"	\$12.00
9" x 9"	\$16.50
12" x 12"	\$25.50

## EMBROIDERY

### MASCOTS (STOCK ONLY)

	LIST PRICE
Mascot	\$11.00
Mascot with One Line	\$12.00
Mascot with Two Lines	\$13.00
American Flag	\$11.00
Small/Homeplate	\$6.00

### DIGITIZING

(STOCK AND ARMOURFUSE ONLY)

	LIST PRICE
Stock Designs and Lettering	\$180.00
Custom Logos	Call for Quote

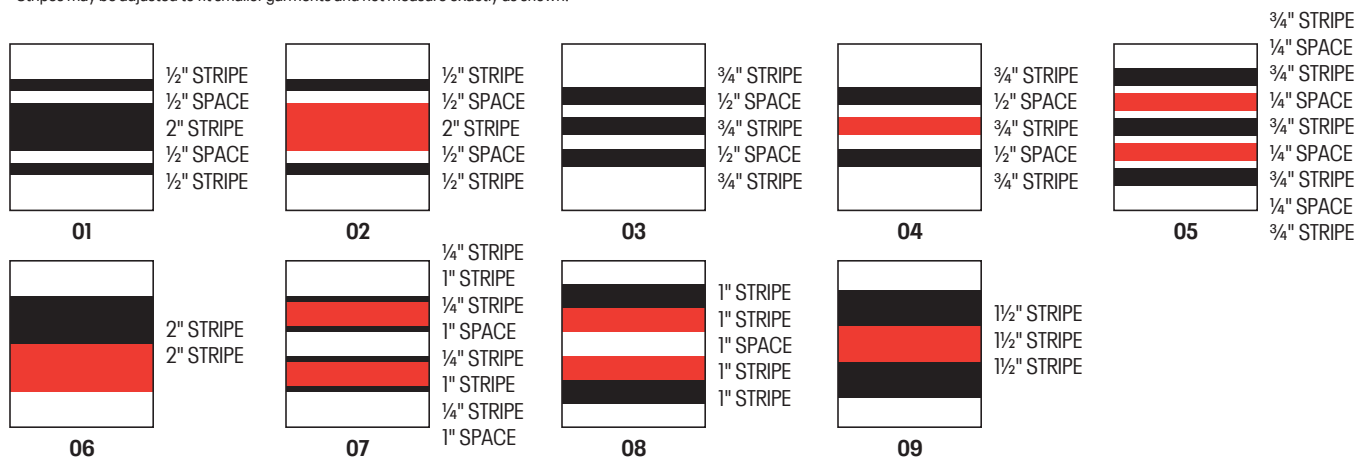
- Prices are based upon size of designs, not the number of colors. Prices are subject to change if design exceeds specifications.
- Dimensions are maximum space - unless specifically noted best judgement will be used.
- Letter styles are available horizontal or arched.
- No digitizing charge for team names.

- Flag size up to 2" by 3" (bigger area - call for quote)
- Minimum order charges apply for embroidery
- All designs require an additional digitizing charge, except:
  - 1) Digitized designs supplied on a disk
  - 2) Digitized design is a re-order of an existing design

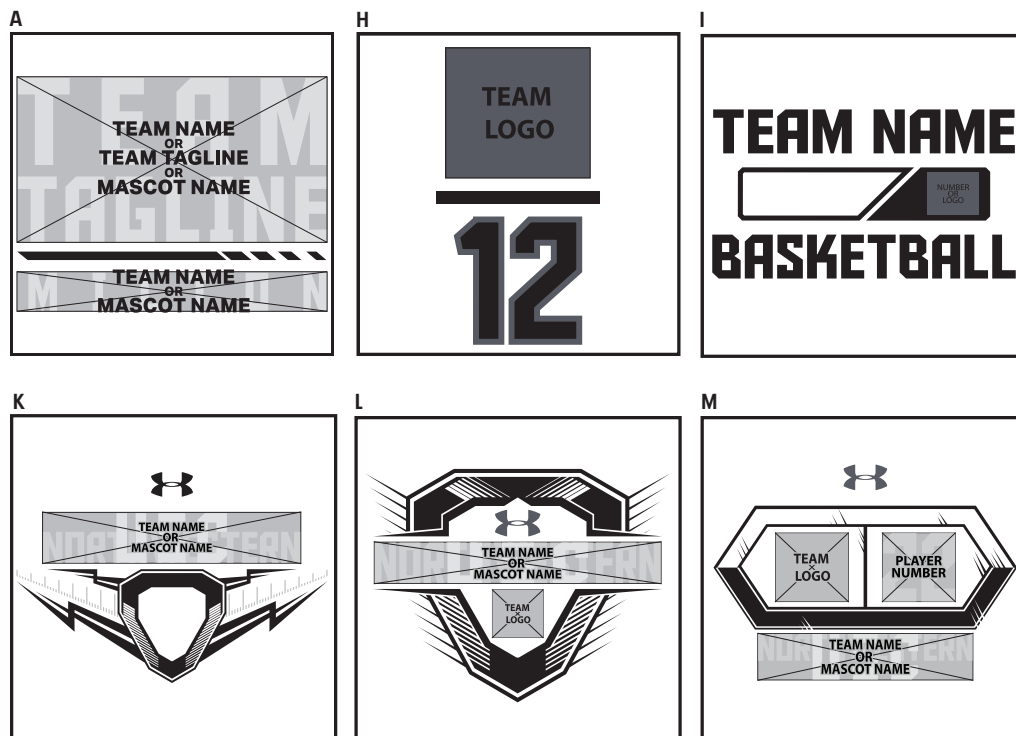
## STANDARD SLEEVE PRINT STRIPES

\*OPTIONS - Code numbers listed below stripe patterns

\*Stripes may be adjusted to fit smaller garments and not measure exactly as shown.



## ARMOURFUSE® GRAPHIC OPTIONS



## UNIFORM CARE INSTRUCTIONS

To enhance the appearance and extend the life of your uniforms, Under Armour recommends that you follow these cleaning and storing procedures:

**DO NOT DRY CLEAN**

**DO NOT WASH IN HOT WATER**

**DO NOT USE CHLORINE BLEACH**

**DO NOT USE FABRIC SOFTENER**

**DO NOT WASH WHITES AND COLORS TOGETHER**

**DO NOT OVERLOAD THE WASHING MACHINE**

**DO NOT MACHINE DRY ON HIGH HEAT**

**DO NOT LEAVE WET OR DAMP GARMENTS IN YOUR TRAVEL BAG, IN A PILE WITH OTHER CLOTHING OR IN WASHING MACHINE**

- Pre wash uniform prior to use.
- Uniforms should always be laundered immediately after wearing. However, if this is not possible, rinse garments and hang individually on rust-proof hangers. (Moisture may cause color migration of acid dyes so we advise separating wet or damp uniforms.)
- Belts and any other contrasting color items should be washed separately from the garment.
- It is always advisable to test wash a single uniform according to directions before washing an entire load.
- Wash and rinse all garments in warm water (approx. 110°) with mild detergent. Remove promptly after wash cycle.
- For optimum results, hang garments (especially those with elastane) to dry. If you cannot hang dry, machine dry on the lowest setting. Turn jerseys inside out before machine drying. Remove items from dryer immediately upon completion of the cycle. (Excessive heat can cause fabric shrinkage, discoloration, and cracking and peeling of vinyl plastisol lettering inks.)
- Make sure uniforms are completely dry before storing. Store in a dry area to prevent mildew. Protect them from sunlight and fluorescent light to prevent yellowing.

**PLEASE NOTE:** Under Armour will not be responsible for uniforms that are damaged due to improper care and maintenance. Failure to follow our specified care instructions will void all guarantees.

## UNIFORM FILL-IN LIFECYCLE

LAST SHOWN IN CATALOG	LAST FILL-IN SEASON	LAST FILL-IN SHIP
SP'19	SP'22	6/15/2022
FA'19	FA'22	12/15/2022
WI'19	WI'22	3/15/2023
SP'20	SP'23	6/15/2023
FA'20	FA'23	12/15/2023
WI'20	WI'23	3/15/2024
SP'21	SP'24	6/15/2024
FA'21	FA'24	12/15/2024
WI'21	WI'24	3/15/2025
SP'22	SP'25	6/15/2025
FA'22	FA'25	12/15/2025
WI'22	WI'25	3/15/2025



**GAMEDAY SELECT TEAM UNIFORMS**  
ORDERING INFORMATION AND CUSTOMER SERVICE:  
1-800-474-6118  
[www.uacustomuniforms.com](http://www.uacustomuniforms.com)



**UA NEXT**  
ORDERING INFORMATION AND CUSTOMER SERVICE:  
1-800-594-9082  
[www.underarmourteamuniforms.com](http://www.underarmourteamuniforms.com)



**ARMOURFUSE™ TEAM UNIFORMS**  
ORDERING INFORMATION AND CUSTOMER SERVICE:  
1-800-594-9082  
[www.underarmourteamuniforms.com](http://www.underarmourteamuniforms.com)



**STOCK TEAM UNIFORMS**  
ORDERING INFORMATION AND CUSTOMER SERVICE:  
1-800-594-9082  
[www.underarmourteamuniforms.com](http://www.underarmourteamuniforms.com)

## ORDERING INFORMATION

### Guarantee:

The materials and workmanship of our garments are guaranteed when given fair treatment and used under normal conditions.

### Color Matching:

Scientifically, it is not possible to achieve a perfect color match from one dye lot to another. Therefore, we cannot guarantee a perfect match from order to order or from one fabric to another.

### Color Abbreviation Key:

The following abbreviations may be used when ordering merchandise.

<b>BG</b> Baseball Gray	<b>EB</b> Electric Blue	<b>PI</b> Pink	<b>SI</b> Silver Grey
<b>BK</b> Black	<b>GP</b> Graphite	<b>PK</b> Powderkeg Blue	<b>TA</b> Taxi
<b>BR</b> Brown	<b>KE</b> Team Kelly Green	<b>PO</b> Poison	<b>TE</b> Teal
<b>CA</b> Cardinal	<b>LG</b> Steeltown Gold	<b>PU</b> Purple	<b>TO</b> Texas Orange
<b>CB</b> Carolina Blue	<b>MA</b> Maroon	<b>RO</b> Royal	<b>TP</b> Tropic Pink
<b>CP</b> Capri	<b>NA</b> Midnight Navy	<b>RU</b> Gold Rush	<b>VG</b> Team Vegas Gold
<b>DG</b> Forest Green	<b>OR</b> Dark Orange	<b>SC</b> University Red	<b>WH</b> White

### Price Policy:

All catalog prices are list or suggested retail. Prices are subject to change without notice. Merchandise will be invoiced based on the prices in effect at the time the order is placed.

### Terms:

Prices are FOB shipping point. Payment is due Net 30.

### Minimum Order Charges:

A handling charge of \$10.00 will be added to orders of less than \$150.00 list.

Custom, GameDay Select and ArmourFuse fill-in minimum order quantity is 6 units per style and color.

A 100% surcharge will be applied to orders of 1-2 units, and a 50% surcharge for orders of 3-5 units.

### Lettered Orders for COD Shipment:

A 50% deposit is required on all lettered orders calling for COD shipment.

### Delivery:

Shipments will always be made by the fastest, least expensive means possible. The customer will assume any additional expense required to expedite delivery.

### Order Cancellations:

Custom, GameDay Select and ArmourFuse orders cannot be cancelled after artwork approval. Lettered garments cannot be cancelled after they have been decorated. Stock order cancellations must be received in a timely manner and must be approved by Under Armour.

### Returns:

Claims must be reported to our office within 10 working days of merchandise receipt. Returns cannot be made after 30 days of the invoice date. All returns for plain merchandise must be clearly marked with an authorization number or label obtained from our office. All returns for lettered merchandise must be clearly marked "LETTERING." When requesting an authorization label, the following information is required: Reason for return, Invoice #, Style #, Color, Size/Quantity. An authorization label will then be sent to you to prepare the merchandise for return shipment. We reserve the right to repair, replace or issue credit for any merchandise returned. A 15% restocking fee and shipping charges will be charged for merchandise returned that is either not damaged or the damage is determined not to be our fault. All worn garments must be properly laundered prior to return or they will not be accepted.

All custom and custom-stock uniforms may not be returned under any circumstances if delivered properly.

### Shortages:

All claims must be made within 10 days of the invoice date.

### New Accounts:

All new accounts must be opened through your local sales representative. New accounts that do not have a Dunn and Bradstreet rating will be shipped COD until a credit line has been established.

### Samples:

Samples will be entered and billed as a regular order. Samples cannot be returned without prior approval from our office.

### Imprint Orders:

All imprint orders must be entered on the B2B site or emailed with detailed instructions on UA order forms. Imprint orders will not be taken by phone. Once garments have been lettered, the order cannot be cancelled or returned.

Under Armour will not be responsible for any items not checked for order accuracy or sizing before being sent to a printer / screener. We will not be responsible for shrinkage, defects, or damages caused during the imprinting of our garments by sources other than our own lettering department. Screenprinting sublimated uniforms can cause color migration. We do not recommend screenprinting on sublimated garments.

Photography is the property of Under Armour and is not to be used without written authorization.



This image shows a single sheet of white paper with horizontal ruling lines. The lines are evenly spaced and run across the width of the page. There are no margins, text, or other markings on the paper.

## COMPRESSION



Ultra-tight, second skin fit that keeps you locked in & makes you feel like you can do anything.

## FITTED



A slimmer, athletic cut that allows total mobility but eliminates the bulk of extra fabric.

## LOOSE

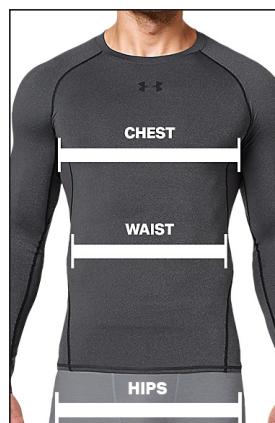


Fuller cut for complete comfort, total range of motion & greater breathability.

# MEN'S

	US SIZE	CHEST (IN)	WAIST (IN)	HIP (IN)
SM	26-28	34-37	29-31	34-36
MD	30-32	37-41	31-34	36-39
LG	34-36	41-44	34-37	39-42
XL	38-40	44-48	37-41	42-46
2XL	42-44	48-52	41-45.5	46-50
3XL	46-48	52-56	45.5-50	50-54
4XL	50-52	56-60	50-54.5	54-58
5XL	54-56	60-64	54.5-59	58-62

## HOW TO MEASURE



**CHEST:** Place the tape measure under your arms at the fullest part of your chest, wrap around your body until your fingers meet and mark the measurement

**WAIST:** Measure around your natural waistline – right above your hips. Be careful not to squeeze too tight to allow a little give.

**HIPS:** With your feet together, measure around the fullest part of your hips to ensure you'll have enough room to move comfortably.

# BOYS

## FITTED



A slimmer, athletic cut that allows total mobility but eliminates the bulk of extra fabric.

## LOOSE



Fuller cut for complete comfort, total range of motion & greater breathability.

	US SIZE	CHEST (IN)	WAIST (IN)	HIP (IN)
YXS	7	25-26	23-24	26-27
YSM	8	26-27	24-25	27-28
YMD	10-12	27-29	25-27	28-31
YLG	14-16	29-32.5	27-30	31-34
YXL	18-20	32.5-35.5	30-33	34-37

## HOW TO MEASURE



**CHEST:** Place the tape measure under your arms at the fullest part of your chest, wrap around your body until your fingers meet and mark the measurement

**WAIST:** Measure around your natural waistline – right above your hips. Be careful not to squeeze too tight to allow a little give.

**HIPS:** With your feet together, measure around the fullest part of your hips to ensure you'll have enough room to move comfortably.

# WOMEN'S

## COMPRESSION



Ultra-tight, second skin fit that keeps you locked in & makes you feel like you can do anything.

## FITTED



Sits close to the skin for a streamlined fit without the squeeze of compression.

## LOOSE



Fuller, more generous cut for enhanced range of motion & an effortlessly relaxed fit.

	US SIZE	CHEST (IN)	WAIST (IN)	HIP (IN)
XS	0-2	32.5-33.5	25.5-27	34.5-36
S	4-6	33.5-36	27-29	36-38
M	8-10	36-38	29-31	38-40
L	12-14	38-41	31-34	40-43
XL	16	41-44	34-37	43-46
2XL	18	44-47	37-40	46-49
3XL	20	47-50	40-43	49-52
4XL	22	50-53	43-46	52-55

## HOW TO MEASURE



**CHEST:** Place the tape measure under your arms at the fullest part of your chest, wrap around your body until your fingers meet and mark the measurement

**WAIST:** Measure around your natural waistline – right above your hips. Be careful not to squeeze too tight to allow a little give.

**HIPS:** With your feet together, measure around the fullest part of your hips to ensure you'll have enough room to move comfortably.

# GIRLS

## FITTED



Sits close to the skin for a streamlined fit without the squeeze of compression.

## LOOSE



Fuller, more generous cut for enhanced range of motion & an effortlessly relaxed fit.

	US SIZE	CHEST (IN)	WAIST (IN)	HIP (IN)
YXS	7	25-26.5	23-24	26-28
YSM	8	26.5-27.5	24-24.5	28-29
YMD	10-12	27.5-30.5	24.5-26.5	29-32.5
YLG	14-16	30.5-34	26.5-30.5	32.5-36.5
YXL	18-20	34-36	30.5-32.5	36.5-38.5

## HOW TO MEASURE



**CHEST:** Place the tape measure under your arms at the fullest part of your chest, wrap around your body until your fingers meet and mark the measurement

**WAIST:** Measure around your natural waistline – right above your hips. Be careful not to squeeze too tight to allow a little give.

**HIPS:** With your feet together, measure around the fullest part of your hips to ensure you'll have enough room to move comfortably.



## WEST

**PAT BAUER**  
SR. REGIONAL MANAGER  
410.299.3798  
pbauer@underarmour.com  
WA // OR // MT // ID // AK

**JEFF UTTZ**  
626.484.3496  
jeffu@underarmour.com  
Southern & Central CA //  
Southern NV // HI

**MARC GUSTAFSON**  
303.828.7468  
mgustafson@underarmour.com  
UT // CO // WY //  
Western KS // Western NE

**MATT VALENTINE**  
415.307.1290  
mvalentine@underarmour.com  
Northern CA // NV

**DAN LAABES**  
602.882.7241  
dlaabes@underarmour.com  
AZ // NM // West & South TX

**GREG ROMINE**  
719.238.9244  
gromine@underarmour.com  
North & East TX // OK // Western AR

## CENTRAL

**BROCK PAALHAR**  
SR. REGIONAL MANAGER  
573.808.1010  
bpaalhar@underarmour.com  
IA // MN // ND // SD

**TONY DONOFRIO**  
419.356.9742  
tonyd@underarmour.com  
Northern IN // Northern OH //  
MI // Western PA

**FRANK WEBER**  
618.540.3955  
fweber@underarmour.com  
MO // Central & Eastern NE //  
Southern IL // Eastern KS

**JOHN WACHTEL**  
513.314.4024  
jwachtel@underarmour.com  
Southern IN // Southern OH //  
Eastern TN // WV

**MONTE GIBBS**  
662.801.3039  
mgibbs@underarmour.com  
Central & Western TN // Panhandle FL //  
LA // AL // MS // Eastern AR

## EAST

**FRANK NUNAN**  
SR. REGIONAL MANAGER  
484.576.9777  
fnunan@underarmour.com  
DE // NJ // Philadelphia area

**DAN WILLIAMS**  
352.672.1676  
dwilliams@underarmour.com  
FL (except Panhandle)

**ALEX BRUEGGEMANN**  
410.652.4337  
abrueggemann@underarmour.com  
GA // SC // NC

**GARY POWERS**  
410.746.3790  
gpowers@underarmour.com  
MD // VA // Washington DC

**BOB BARTLETT**  
315.380.6505  
bobb@underarmour.com  
NY // Lax Specialty

**JAY KELLEHER**  
443.615.0462  
jkelleher@underarmour.com  
New England

## COLLEGIATE

**TOMMY AMICO**  
951.808.0367  
tamico@underarmour.com  
WEST

**TODD LOCKLEAR**  
410.454.6572  
tlocklear@underarmour.com  
EAST

## LICENSEES

**FOUNDER SPORT GROUP**  
Stock & Armourfuse Uniforms  
www.underarmourteamuniforms.com  
800.594.9082  
UASatus@foundersportgroup.com

**POWERS ATHLETIC**  
Custom Uniforms  
www.uacustomuniforms.com  
800.474.6118  
customerservice@powersathletic.com

**USB**  
McDavid & Shock Doctor  
Water Bottles  
657.383.4438  
UA@unitedspb.com



TEL: 1.888.828.1547 / B2B: ARMOURHOUSE.UNDERARMOUR.COM

### COLLEGIATE

TEAMSPO RTS COLLEGIATE / TEAMSPO RTS.COLLEGIATE@UNDERARMOUR.COM

### CENTRAL

TEAM SPORTS MW / TEAMSPORTSMW@UNDERARMOUR.COM

### EAST

TEAM SPORTS SE / TEAMSPORTSSE@UNDERARMOUR.COM  
TEAM SPORTS NE / TEAMSPORTSNE@UNDERARMOUR.COM

### WEST

TEAM SPORTS WC / TEAMSPORTSWC@UNDERARMOUR.COM  
TEAM SPORTS SW / TEAMSPORTSSW@UNDERARMOUR.COM

## CONTACT CENTER

Corporate Headquarters  
1020 Hull Street  
Baltimore, MD 21230

Under Armour® Apparel Returns  
1010 Swan Creek Drive  
Baltimore, MD 21226

UA Footwear/Accessories Returns  
2510 W. Walnut Avenue  
Rialto, CA 92376

### ALL TEAM SPORTS ORDERS AND QUESTIONS PLEASE USE THE FOLLOWING:

1.888.828.1547

### CORPORATE OFFICE HOURS OF OPERATION

Monday through Friday, 8:30am – 7:00pm, EST.

### UNDER ARMOUR® B2B – ONLINE ORDERING

[armourhouse.underarmour.com](https://armourhouse.underarmour.com)

- 24/7 access to check inventory and place orders
- Ability to track orders and shipments
- Priority product allocation
- Faster processing time

### UNDER ARMOUR® B2B – SUPPORT

[B2B\\_support@underarmour.com](mailto:B2B_support@underarmour.com)

### UNDER ARMOUR® RETURN POLICY

Under Armour® stands behind its gear and EXPECTS nothing less than perfection. If you have received a defective product, an incorrect size, or an incorrect order, please contact us immediately for a return authorization number so that we can quickly process your return and ensure your satisfaction.

ALL RETURNS MUST BE COMPLETED WITHIN 30 DAYS OF RECEIPT AND MUST BE IN REASONABLE CONDITION. ALL RETURNS MUST HAVE THE RA# CLEARLY MARKED ON THE CARTON. ALL RETURNS ARE SUBJECT TO A 15% RE-STOCKING FEE.

Should you need to return or exchange an item, you MUST include your RA#, a copy of your invoice, and an explanation in writing as to why you are returning the item. Send your return to the marked address on your pack list. If you are exchanging merchandise, you are responsible for the cost of returning the product. Original shipping costs are non-refundable. All returned merchandise must be received in new, resalable condition.

### UNDER ARMOUR® CANCELLATION POLICY

Any request for cancellation of an order for UA products must be made, in writing, through the customer's UA Sales Representative. A request to cancel an order must be made more than 30 days before the customer's original desired ship date. All cancellations are subject to UA approval.

### ALL PRICES SET FORTH HEREIN ARE SUBJECT TO CHANGE WITHOUT NOTICE.

© 2022 Under Armour®. All rights reserved. All trademarks, images, photographs, logos, and graphics are owned or controlled by Under Armour®.

Confidential and business proprietary information for internal Under Armour®, Inc. use only. Reproduction is strictly prohibited.

**UNDER ARMOUR® PERFORMANCE**  
WINTER 2022