



HOCKEY

Winter 2025



UNDER ARMOUR

THE ONLY WAY IS THROUGH.



VISION

TO INSPIRE YOU WITH PERFORMANCE
SOLUTIONS YOU NEVER KNEW
YOU NEEDED BUT CAN'T IMAGINE
LIVING WITHOUT.

MISSION

UNDER ARMOUR
MAKES YOU BETTER.

HOCKEY —

- 001 HOCKEY UNIFORMS
- 014 HOCKEY APPAREL
- 018 HOCKEY ACCESSORIES
- 020 UNIFORM ORDERING INFO



HOCKEY GAMEDAY

- New, cutting edge uniforms worn by the top collegiate hockey programs in the country
- Lightweight, moisture wicking knit fabrics provide ultimate comfort and breathability while maintaining optimum durability
- New, Gameday Select all-inclusive pricing.

PRICING INCLUDES EITHER DECORATION PACKAGE:

- Team name, front and back numbers, and sleeve numbers
- Large front logo, back numbers, and sleeve numbers
- Yoke logos available for additional \$30 per jersey

Nameplates available for surcharge

GAMEDAY PINNACLE 2.0 JERSEY

SM-2XL

JERSEY	SIZE	PRICE
UH054JM (M)	SM-2XL	\$295.00
BLANK		\$260.00
GOALIE JERSEY		
UH054JMG (M)	SM-2XL	\$305.00
BLANK		\$270.00

- Lightweight knit fabric provides ultimate comfort while maintaining optimum durability
- Mesh underarm & back panels deliver strategic ventilation
- Stripe options shown above are available in all Armourfuse colors

WHT	SLG	GPH	BLK	PUR	MDN	RYL	FGR
TKG	DKO	RED	CRD	MAR	VGJ	SGD	



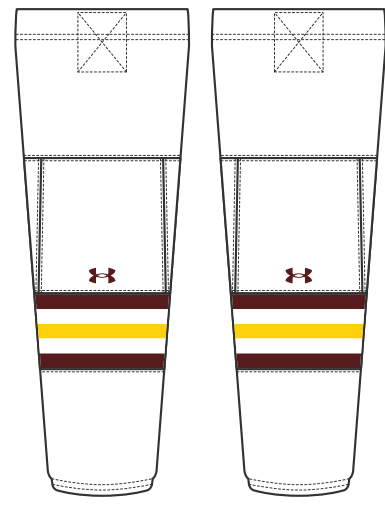
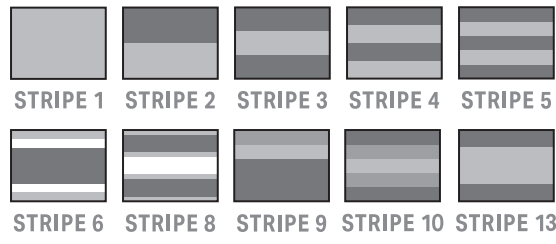
GAMEDAY PINNACLE 2.0 SOCK

XS-XL

SOCK	SIZE	PRICE
UH065SM (M)	XS-XL	\$130.00

- Lightweight knit fabric provides ultimate comfort while maintaining optimum durability
- Stripe options shown above are available in all Armourfuse colors

WHT	SLG	GPH	BLK	PUR	MDN	RYL	FGR
TKG	DKO	RED	CRD	MAR	VGJ	SGD	



PINNACLE 2.0

BASE UNIFORM APPROVED FOR HS PLAY

GAMEDAY PINNACLE 2.0 LACE FRONT JERSEY

SM-2XL

JERSEY	SIZE	PRICE
UH064JM (M)	SM-2XL	\$295.00
BLANK		\$260.00

GOALIE JERSEY

UH064JMG (M)	SM-2XL	\$305.00
BLANK		\$270.00

- Lightweight knit fabric provides ultimate comfort while maintaining optimum durability
- Mesh underarm & back panels deliver strategic ventilation
- Stripe options shown above are available in all Armourfuse colors

WHT	SLG	GPH	BLK	PUR	MDN	RYL	FGR
TKG	DKO	RED	CRD	MAR	VGD	SGD	



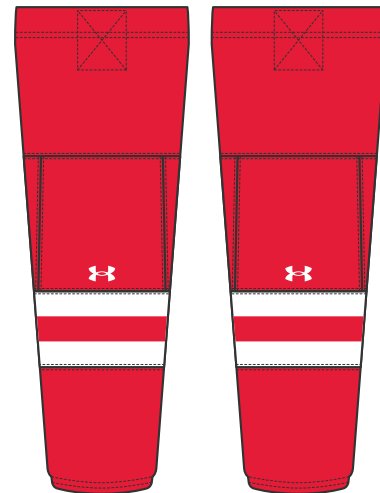
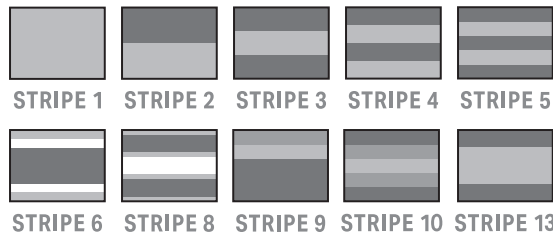
GAMEDAY PINNACLE 2.0 SOCK

XS-XL

SOCK	SIZE	PRICE
UH065SM (M)	XS-XL	\$130.00

- Lightweight knit fabric provides ultimate comfort while maintaining optimum durability
- Stripe options shown above are available in all Armourfuse colors

WHT	SLG	GPH	BLK	PUR	MDN	RYL	FGR
TKG	DKO	RED	CRD	MAR	VGD	SGD	



PINNACLE 2.0 LACE FRONT

BASE UNIFORM APPROVED FOR HS PLAY



GAMEDAY UNIFORMS // ORDERING INFORMATION AND CUSTOMER SERVICE: 1-800-474-6118 // www.uacustomuniforms.com

FILL-IN LIFECYCLE TIMING FOUND ON PAGE 26. DECORATION OPTIONS AND ORDERING INFORMATION ARE AVAILABLE ON PAGES 20-26.

GAMEDAY VARSITY JERSEY

SM-2XL, YSM-YXL

JERSEY	SIZE	PRICE
UH051JM (M)	SM-2XL	\$165.00
BLANK		\$130.00
UH051JY (Y)	YSM-YXL	\$150.00
GOALIE JERSEY		
UH051JMG (M)	SM-2XL	\$175.00
BLANK		\$130.00
UH051JYG (Y)	YSM-YXL	\$160.00

- Pin dot mesh offers maximum breathability and comfort
- Stripe options shown below are available in all Armourfuse colors

WHT	VWH	SLG	BBG	BLK	PUR	MDN	RYL	VBL
FGR	TKG	DKO	RED	CRD	MAR	VGD	SGD	



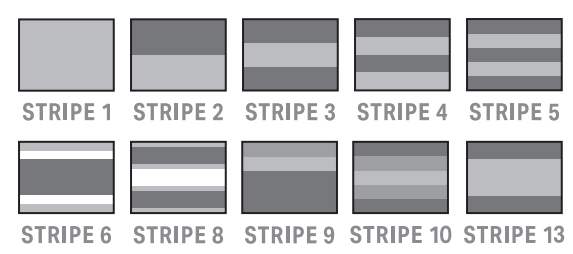
GAMEDAY VARSITY SOCK

SM-2XL, YSM-YXL

SOCK	SIZE	PRICE
UH052SM (M)	XS-XL	\$75.00
UH052SY (Y)	YSM-YXL	\$65.00

- Pin dot mesh offers maximum breathability and comfort
- Stripe options shown below are available in all Armourfuse colors

WHT	VWH	SLG	BBG	BLK	PUR	MDN	RYL	VBL
FGR	TKG	DKO	RED	CRD	MAR	VGD	SGD	



Varsity

BASE UNIFORM APPROVED FOR HS PLAY

GAMEDAY BEANPOT JERSEY

SM-2XL

JERSEY	SIZE	PRICE
UH049JM (M)	SM-2XL	\$165.00
BLANK		\$130.00

GOALIE JERSEY

UH049JMG (M)	SM-2XL	\$175.00
BLANK		\$130.00

- Pin dot mesh offers maximum breathability and comfort

WHT	VWH	SLG	BBG	BLK	PUR	MDN	RYL	VBL
FGR	TKG	DKO	RED	CRD	MAR	VGD	SGD	



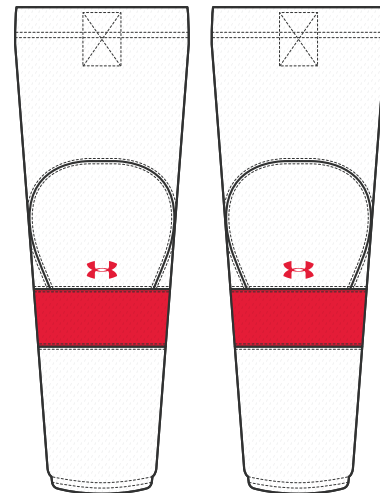
GAMEDAY BEANPOT SOCK

XS-XL

SOCK	SIZE	PRICE
UH050SM (M)	XS-XL	\$75.00

- Pin dot mesh offers maximum breathability and comfort

WHT	VWH	SLG	BBG	BLK	PUR	MDN	RYL	VBL
FGR	TKG	DKO	RED	CRD	MAR	VGD	SGD	



BEANPOT

BASE UNIFORM APPROVED FOR HS PLAY



GAMEDAY UNIFORMS // ORDERING INFORMATION AND CUSTOMER SERVICE: 1-800-474-6118 // www.uacustomuniforms.com

FILL-IN LIFECYCLE TIMING FOUND ON PAGE 26. DECORATION OPTIONS AND ORDERING INFORMATION ARE AVAILABLE ON PAGES 20-26.

GAMEDAY POWER PLAY JERSEY

SM-2XL

JERSEY	SIZE	PRICE
UH029JM (M)	SM-2XL	\$165.00
BLANK		\$130.00
GOALIE JERSEY		
UH029JMG (M)	SM-2XL	\$175.00
BLANK		\$130.00

•Pin dot mesh offers maximum breathability and comfort

WHT	VWH	SLG	BBG	BLK	PUR	MDN	RYL	VBL
FGR	TKG	DKO	RED	CRD	MAR	VGJ	SGD	



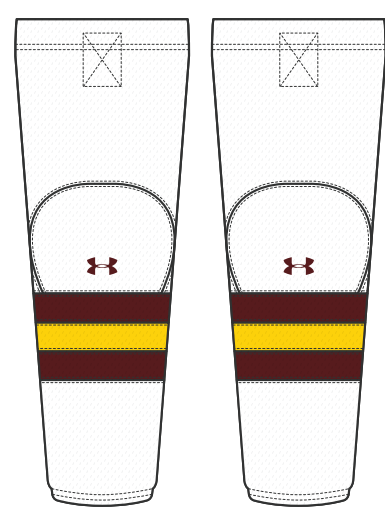
GAMEDAY POWER PLAY SOCK

XS-XL

SOCK	SIZE	PRICE
UH030SM (M)	XS-XL	\$75.00

•Pin dot mesh offers maximum breathability and comfort

WHT	VWH	SLG	BBG	BLK	PUR	MDN	RYL	VBL
FGR	TKG	DKO	RED	CRD	MAR	VGJ	SGD	



POWER PLAY

BASE UNIFORM APPROVED FOR HS PLAY

UA PRACTICE JERSEY

SM-2XL

JERSEY	SIZE	PACKAGE	PRICE
UH035JM (M)	SM-2XL	BLANK	\$95.00
		DECORATED*	\$125.00
GOALIE JERSEY	SIZE	PACKAGE	PRICE
UH035JMG (M)	SM-2XL	BLANK	\$105.00
		DECORATED*	\$135.00

*DECORATION PACKAGE INCLUDES TEAM NAME OR LOGO AND BACK NUMBERS

•Lightweight mesh

WHT	VWH	SLG	BBG	BLK	PUR	MDN	RYL	VBL
FGR	TKG	DKO	RED	CRD	MAR	VGJ	SGD	



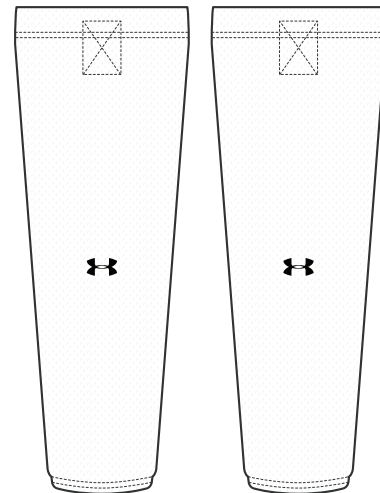
UA PRACTICE SOCK

SM-XL

SOCK	SIZE	PRICE
UH036SM (M)	SM-XL	\$75.00

•Lightweight mesh

WHT	VWH	SLG	BBG	BLK	PUR	MDN	RYL	VBL
FGR	TKG	DKO	RED	CRD	MAR	VGJ	SGD	



PRACTICE

BASE UNIFORM APPROVED FOR HS PLAY



GAMEDAY UNIFORMS // ORDERING INFORMATION AND CUSTOMER SERVICE: 1-800-474-6118 // www.uacustomuniforms.com

FILL-IN LIFECYCLE TIMING FOUND ON PAGE 26. DECORATION OPTIONS AND ORDERING INFORMATION ARE AVAILABLE ON PAGES 20-26.



HOCKEY ARMOURFUSE

- Brilliant, vibrant team colors permanently fused directly into textiles
- Limitless customization, all-inclusive pricing with exclusive UA designs and customized prints
- 37 different colors and 16 prints available

NEW

ARMOURFUSE® ENFORCER 2.0 JERSEY

FIRST SHIP: 6/1/2025 //
SM-2XL, YSM-YXL

JERSEY	SIZE	PRICE
UH066JM (M)	SM-2XL	\$155.00
UH068JY (Y)	YSM-YXL	\$120.00

GOALIE JERSEY

UH066JMG (M)	SM-2XL	\$165.00
UH068JYG (Y)	YSM-YXL	\$130.00

- Pin dot mesh offers maximum breathability and comfort
- Stripe options shown below are available in all Armourfuse colors



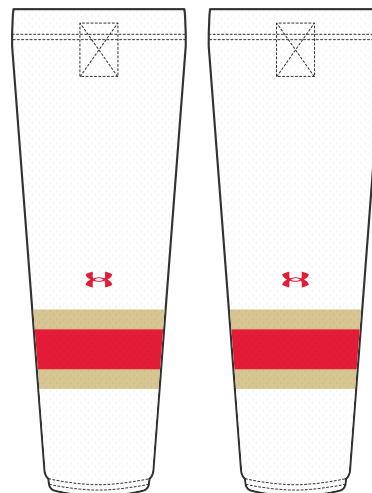
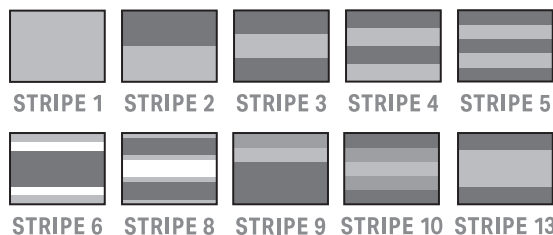
NEW

ARMOURFUSE® ENFORCER 2.0 SOCK

FIRST SHIP: 6/1/2025 //
SM-XL, YSM-YXL

SOCK	SIZE	PRICE
UH067SM (M)	SM-XL	\$75.00
UH069SY (Y)	YSM-YXL	\$65.00

- Pin dot mesh offers maximum breathability and comfort
- Stripe options shown below are available in all Armourfuse colors



ENFORCER 2.0

BASE UNIFORM APPROVED FOR HS PLAY



ARMOURFUSE® UNIFORMS // ORDERING INFORMATION AND CUSTOMER SERVICE: 1-800-474-6118 // www.uacustomuniforms.com

FILL-IN LIFECYCLE TIMING FOUND ON PAGE 26. DECORATION OPTIONS AND ORDERING INFORMATION ARE AVAILABLE ON PAGES 20-26.

NEW

ARMOURFUSE® BRUISER JERSEY

FIRST SHIP: 6/1/2025 //
SM-2XL, YSM-YXL

JERSEY	SIZE	PRICE
UH070JM (M)	SM-2XL	\$155.00
UH072JY (Y)	YSM-YXL	\$120.00

GOALIE JERSEY

UH070JMG (M)	SM-2XL	\$165.00
UH072JYG (Y)	YSM-YXL	\$130.00

• Pin dot mesh offers maximum breathability and comfort



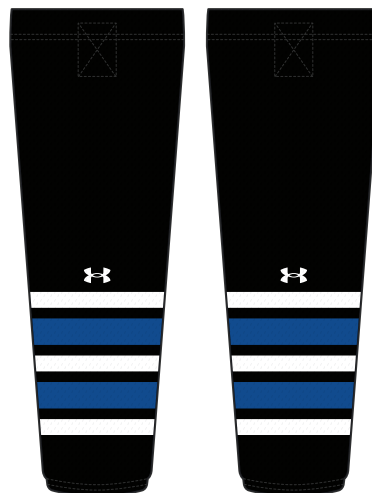
NEW

ARMOURFUSE® BRUISER SOCK

FIRST SHIP: 6/1/2025 //
SM-XL, YSM-YXL

SOCK	SIZE	PRICE
UH071SM (M)	SM-XL	\$75.00
UH073SY (Y)	YSM-YXL	\$65.00

• Pin dot mesh offers maximum breathability and comfort



BRUISER

BASE UNIFORM APPROVED FOR HS PLAY



ARMOURFUSE® UNIFORMS // ORDERING INFORMATION AND CUSTOMER SERVICE: 1-800-474-6118 // www.uacustomuniforms.com

FILL-IN LIFECYCLE TIMING FOUND ON PAGE 26. DECORATION OPTIONS AND ORDERING INFORMATION ARE AVAILABLE ON PAGES 20-26.

NEW

ARMOURFUSE® PROWLER JERSEY

FIRST SHIP: 6/1/2025 //
SM-2XL, YSM-YXL

JERSEY	SIZE	PRICE
UH074JM (M)	SM-2XL	\$155.00
UH076JY (Y)	YSM-YXL	\$120.00

GOALIE JERSEY

UH074JMG (M)	SM-2XL	\$165.00
UH076JYG (Y)	YSM-YXL	\$130.00

• Pin dot mesh offers maximum breathability and comfort



NEW

ARMOURFUSE® PROWLER SOCK

FIRST SHIP: 6/1/2025 //
SM-XL, YSM-YXL

SOCK	SIZE	PRICE
UH075SM (M)	SM-XL	\$75.00
UH077SY (Y)	YSM-YXL	\$65.00

• Pin dot mesh offers maximum breathability and comfort



PROWLER

BASE UNIFORM APPROVED FOR HS PLAY



ARMOURFUSE® UNIFORMS // ORDERING INFORMATION AND CUSTOMER SERVICE: 1-800-474-6118 // www.uacustomuniforms.com

FILL-IN LIFECYCLE TIMING FOUND ON PAGE 26. DECORATION OPTIONS AND ORDERING INFORMATION ARE AVAILABLE ON PAGES 20-26.

ARMOURFUSE® CLASSIC JERSEY

SM-2XL, YSM-YXL

JERSEY	SIZE	PRICE
UH056JM (M)	SM-2XL	\$155.00
UH060JY (Y)	YSM-YXL	\$120.00
GOALIE JERSEY		
UH056JMG (M)	SM-2XL	\$165.00
UH060JYG (Y)	YSM-YXL	\$130.00

• Pin dot mesh offers maximum breathability and comfort



ARMOURFUSE® CLASSIC SOCK

SM-XL, YSM-YXL

SOCK	SIZE	PRICE
UH057SM (M)	SM-XL	\$75.00
UH061SY (Y)	YSM-YXL	\$65.00

• Pin dot mesh offers maximum breathability and comfort



CLASSIC

BASE UNIFORM APPROVED FOR HS PLAY

ARMOURFUSE® COMMONWEALTH JERSEY

SM-2XL, YSM-YXL

JERSEY	SIZE	PRICE
UH058JM (M)	SM-2XL	\$155.00
UH062JY (Y)	YSM-YXL	\$120.00

GOALIE JERSEY

UH058JMG (M)	SM-2XL	\$165.00
UH062JYG (Y)	YSM-YXL	\$130.00

- Pin dot mesh offers maximum breathability and comfort



ARMOURFUSE® COMMONWEALTH SOCK

SM-XL, YSM-YXL

SOCK	SIZE	PRICE
UH059SM (M)	SM-XL	\$75.00
UH063SY (Y)	YSM-YXL	\$65.00

- Pin dot mesh offers maximum breathability and comfort



COMMONWEALTH

BASE UNIFORM APPROVED FOR HS PLAY



ARMOURFUSE® UNIFORMS // ORDERING INFORMATION AND CUSTOMER SERVICE: 1-800-474-6118 // www.uacustomuniforms.com

FILL-IN LIFECYCLE TIMING FOUND ON PAGE 26. DECORATION OPTIONS AND ORDERING INFORMATION ARE AVAILABLE ON PAGES 20-26.

1386936**UA M'S FITTED GRIPPY LONGSLEEVE**\$60.00 | **FITTED** | SM-2XL**YOUTH: 1387511** | \$55.00 | YXS-YXL

FIRST SHIP: C/O // LAST SHIP: 6/19/2025

- HeatGear® fabric is ultra-soft & smooth for extreme comfort with very little weight
- Strategic ArmourGrip® graphics help secure pads in place
- Stretch-mesh underarm panels deliver strategic ventilation
- 4-way stretch material moves better in every direction
- Material wicks sweat & dries really fast

BODY: 84% POLYESTER, 16% ELASTANE

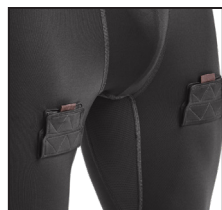
MESH: 88% POLYESTER, 12% ELASTANE

025
CSR/BLK**1356493****UA M'S HOCKEY COMPRESSION SHORT**\$55.00 | **COMPRESSION** | SM-2XL

FIRST SHIP: C/O // LAST SHIP: 6/19/2025

- Our original HeatGear® fabric is super-light, breathable & dries fast
- Stretch-mesh cup pocket & inseam panels deliver strategic ventilation
- High-impact protective cup included
- 4-way stretch material moves better in every direction
- Material wicks sweat & dries really fast
- Wide, exposed elastic waistband
- Hook & loop sock lock tabs

84% POLYESTER, 16% ELASTANE

heatgear®025
CSR/BLK

VELCRO DETAIL



1356492 UA M'S HOCKEY COMPRESSION LEGGING

\$60.00 | **COMPRESSION** | SM-2XL

YOUTH: 1356503 | \$55.00 | YXS-YXL

FIRST SHIP: C/O // LAST SHIP: 6/19/2025

- Our original HeatGear® fabric is super-light, breathable & dries fast
- Stretch-mesh cup pocket & inseam panels deliver strategic ventilation
- High-impact protective cup included
- 4-way stretch material moves better in every direction
- Material wicks sweat & dries really fast
- Wide, exposed elastic waistband
- Hook & loop sock lock tabs

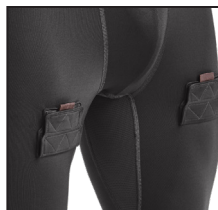
84% POLYESTER, 16% ELASTANE

heatgear™

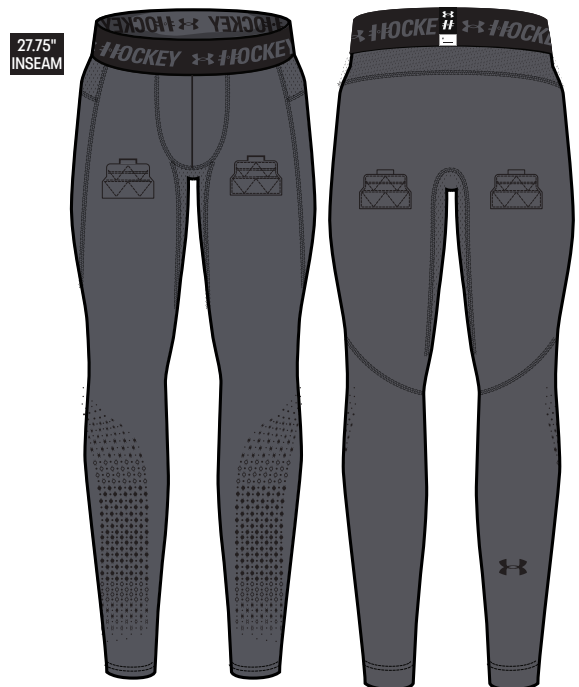
YOUTH STYLE IS FITTED



025
CSR/BLK



VELCRO DETAIL



1347265**UA M'S HOCKEY SOFTSHELL JACKET II**\$90.00 | **LOOSE** | SM-2XL**YOUTH: 1347266** | \$85.00 | YXS-YXL

FIRST SHIP: C/O // LAST SHIP: 6/19/2025

- UA Storm technology repels water without sacrificing breathability
- Stretch 3-layer softshell material with brushed, fleece back for added comfort & warmth
- Secure, zip hand pockets
- Adjustable cuffs
- Dropped, shaped hem for enhanced coverage
- Embroidered logos

100% POLYESTER

coldgear **STORM**

001 Y 410 Y
BLK/WHT MDN/WHT



1317185**UA M'S HOCKEY JACKET**\$75.00 | **LOOSE** | SM-2XL**YOUTH: 1317212** | \$70.00 | YXS-YXL

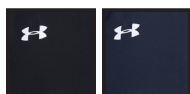
FIRST SHIP: C/O // LAST SHIP: 6/19/2025

- Wind and water resistant stretch woven shell
- Internal mesh lining
- Side zip pockets
- Fleece lined neck collar

84% POLYESTER, 16% ELASTANE

coldgear

Y = YOUTH OFFERING



001Y 410Y
BLK/WHT MDN/WHT



32" INSEAM
SIDE POCKETS

1317187**UA M'S HOCKEY PANT**\$60.00 | **LOOSE** | SM-2XL**YOUTH: 1317214** | \$55.00 | YXS-YXL

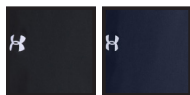
FIRST SHIP: C/O // LAST SHIP: 6/19/2025

- Wind and water resistant stretch woven shell
- Internal mesh lining
- Side pockets and back zip pockets
- Side zip leg openings

87% POLYESTER, 13% ELASTANE

coldgear

Y = YOUTH OFFERING



001Y 410Y
BLK/WHT MDN/WHT



1365314 UA HOCKEY EQUIPMENT BAG

\$80.00 | 20.6" X 19.7" X 37" | 203 L

FIRST SHIP: 6/20/2023 // LAST SHIP: 6/19/2025

- Holds all the equipment and gear you need, and it's super-durable
- Ripstop diamond PU fabric with coated top panel for ultimate durability in the locker room
- Large main compartment, side skate pockets & internal secure valuables pocket
- Mesh air vents to help keep your gear fresh & dry
- Durable webbing grab handles & shoulder straps for easy transportation
- Customizable window ID for your name & number

100% POLYESTER



001
BLK/WHI



410
MDN/WHI

1346372

GAMEDAY ARMOUR® PRO MOUTHGUARD

\$23.00 | OSFM

YOUTH: 1346373 | \$23.00 | OSFM

FIRST SHIP: C/O

SHOCK DOCTOR TECHNOLOGIES

- Multi-Layer Design — Protection and comfort in a low-profile structure
- Gel Fit Liner — Molds to teeth for comfortable, custom-like fit
- Integrated Jaw Pads — Offer added protection and support at impact
- Convertible Strap – Wear it strapped or strapless
- Boil and Bite – For custom-like fit
- Meets national and state high school rules



900
TRANS/CBL



001
BLK



600
RED



400
RYL

1346927

GAMEDAY ARMOUR® BRACES - STRAPLESS

\$23.00 | OSFM

YOUTH: 1346928 | \$23.00 | OSFM

FIRST SHIP: C/O

SHOCK DOCTOR TECHNOLOGIES

- Specifically designed to conform to upper brace brackets for retention, comfort, and prevention from lacerations
- 100% Medical Grade Silicone adapts to changes in mouth structure as teeth adjust
- Instant fit-no boil, ready to go out of the package

100% SILICONE

*Not eligible for Promo



100
TRANS GRAY

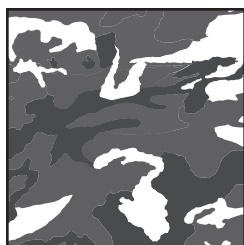


WHITE	BLACK	PITCH GRAY	GRAPHITE	BASEBALL GRAY	SILVER GRAY	OCEAN STORM
MIDNIGHT NAVY	ROYAL	POWDERKEG BLUE	ELECTRIC BLUE	CAPRI	CAROLINA BLUE	COASTAL TEAL
PURPLE	MAROON	CARDINAL	CRIMSON	UNIVERSITY RED	TROPIC PINK	
PINK	VINTAGE WHITE	TAXI	CAMPUS GOLD	TENNESSEE ORANGE	DARK ORANGE	
TEXAS ORANGE	CLEVELAND BROWN	GOLD RUSH	TEAM VEGAS GOLD	GRAYSTONE	MILITARY GREEN	
FOREST GREEN	TEAM KELLY GREEN	MIAMI TEAL	SEA GLASS	POISON		

FLUORESCENTS (NOT CURRENTLY AVAILABLE IN TONAL PRINTS OR ON GAMEDAY PRODUCT)

ORANGE FLUORESCENT	PINK FLUORESCENT	GREEN FLUORESCENT	YELLOW FLUORESCENT

Prints available in all ArmourFuse colors. (Fluorescents not currently available in tonal prints)



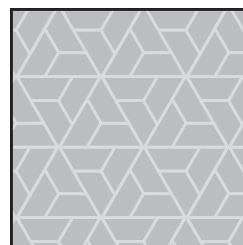
WOODLAND CAMO



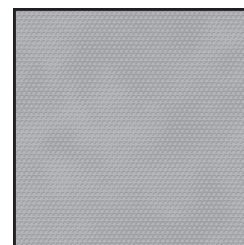
BENGAL



BLUR



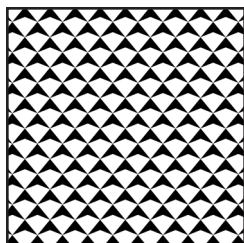
RAZOR



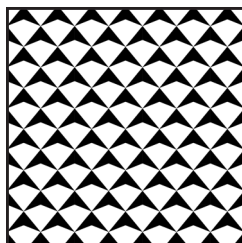
SCALE



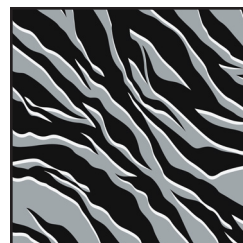
SPLINTER



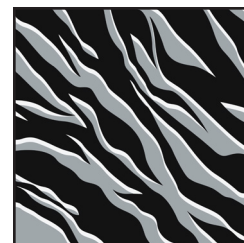
SHIELD MICRO



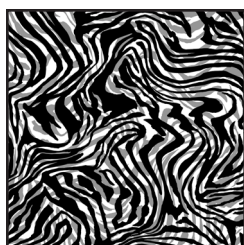
SHIELD MID



TIGER MICRO



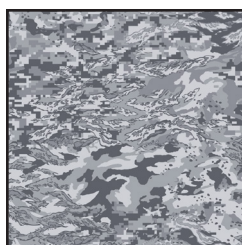
TIGER MACRO



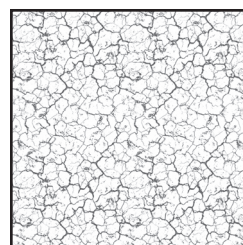
ZEBRA MICRO



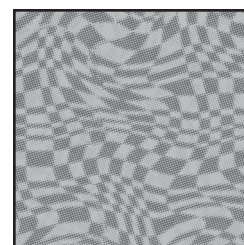
ZEBRA MACRO



ABC CAMO



CRACKLE



HAFITONE CHECKER



TIGER CAMO



FLORAL
(Not available on Gameday)

DESERT CAMO (LOCKED COLOR COMBINATIONS, CANNOT BE ALTERED)



DESERT
WOODLAND CAMO

STOCK DECORATION OPTIONS

SCREEN PRINT	ONE COLOR	TWO COLORS
Team Name	\$5.50	\$10.50
Team Mascot/Logo	\$5.50	\$10.50
Front + Back Numbers	\$12.00	\$17.00

TWILL	ONE COLOR	TWO COLORS
Team Name	\$22.00	\$27.00
Front + Back Numbers	\$27.00	\$32.00
Player Names	\$22.00	
ArmourFuse Twill Patch (Max 3"x3")	\$11.00	\$11.00

EMBROIDERY	ONE COLOR	TWO COLORS
Team Name (up to 2")	\$10.00	\$10.00

see page 24 for Embroidered Mascot/Logo pricing

ADDITIONAL STOCK OPTIONS & NOTES

- Player Numbers Per Location = 1/2 of above
"Front + Back Numbers" pricing
- Player Name Directly On Jersey Only (No Nameplates)
- ArmourFuse Twill = Twill Pricing +\$10
- Add Tail to Script Font Twill Team Name +\$10
- Add Embroidery to Twill Tail +\$10
- Non-Stock designs and lettering may require additional charge at Under Armour's discretion (call for quote)

FONT OPTIONS

BADGER

ABCDEFGHIJKLMNOPQRSTUVWXYZ
0123456789

BEAR

ABCDEFGHIJKLMNOPQRSTUVWXYZ
0123456789

CADET

ABCDEFGHIJKLMNOPQRSTUVWXYZ
0123456789

FULL BLOCK

ABCDEFGHIJKLMNOPQRSTUVWXYZ
0123456789

TERRAFONT

ABCDEFGHIJKLMNOPQRSTUVWXYZ
0123456789

PREMIER

ABCDEFGHIJKLMNOPQRSTUVWXYZ
0123456789

TUSCAN

ABCDEFGHIJKLMNOPQRSTUVWXYZ
0123456789

UNDENIABLE

ABCDEFGHIJKLMNOPQRSTUVWXYZ
0123456789

UA COLLEGIATE SANS

ABCDEFGHIJKLMNOPQRSTUVWXYZ
0123456789

UA COLLEGIATE SANS CONDENSED

ABCDEFGHIJKLMNOPQRSTUVWXYZ
0123456789

UA COLLEGIATE SERIF

ABCDEFGHIJKLMNOPQRSTUVWXYZ
0123456789

UA COLLEGIATE SERIF CONDENSED

ABCDEFGHIJKLMNOPQRSTUVWXYZ
0123456789

MODERN

ABCDEFGHIJKLMNOPQRSTUVWXYZ
0123456789

ATHLETIC SCRIPT

ABCDEFGHIJKLMNOPQRSTUVWXYZ
abcdefghijklmnopqrstuvwxyz

SWINGMAN

ABCDEFGHIJKLMNOPQRSTUVWXYZ
abcdefghijklmnopqrstuvwxyz

NOTE:

- Gameday Select Package Pricing now includes all of the above listed fonts
- Dropped fonts available for fill-in orders only

LETTERING ARRANGEMENTS

STRAIGHT

TEAMNAME

BRIDGED

TEAMNAME

ARCH

TEAMNAME



VERTICAL ARCH

TEAMNAME

SCRIPT WITH TAIL

Teamname

GAMEDAY OPTIONS

3/16" 1-COLOR PIPE	1/2" 3-COLOR BRAID	INCLUDED PIPE/BRAID	OPTIONAL PANT ALTERATIONS	LIST PRICE
		1. Jersey Front Around Neck OR Around Placket OR None 2. Jersey Sleeves Sleeve Ends OR None 3. Pants Down Side OR None	Reduce Knicker Inseam 2" and Hem w/ Elastic Increase Knicker Inseam 2" and Hem w/ Elastic Increase Knicker Inseam 4" and Hem w/ Elastic* Reduce Relaxed/Tapered Inseam 2" and Hem Increase Relaxed/Tapered Inseam 2" and Hem Increase Relaxed/Tapered Inseam 4" and Hem*	\$0.00 \$0.00 \$15.00 \$0.00 \$0.00 \$15.00
ANY COMBO OF PIPE COLORS			OPTIONAL ARMOURFUSE® TWILL (L X H)	LIST PRICE
			Custom Font Team Name (Max. 14" x 4.25") Custom Left Chest Team Logo (Max. 4" x 5") Custom Sleeve Patch (Max. 4" x 4") Custom Back Neck Patch (Max. 3" x 2") Player Name (On Nameplate) Player Name Directly on Jersey (No Nameplate) Blank Nameplate Add Tail to Script Font Team Name Add Text to Script Font Tail	\$10.00 \$15.00 \$15.00 \$15.00 \$40.00 \$30.00 \$7.00 \$20.00 \$20.00
			Note: Vector art must be provided for custom Armourfuse® Twill or additional artwork charges will apply *Available on Men's styles only	

STOCK OPTIONS

3/16" 1-COLOR PIPE	LIST PRICE
Around Placket (UBJ316P)	\$17.00
Sleeve Ends (UBJ316S)	\$17.00
Down Side (UBP316D)	\$17.00
1/2" 3-COLOR BRAID	LIST PRICE
Around Placket (UBJ12AP)	\$17.00
Around Neck (UBJ12NB)	\$17.00
Sleeve Ends (UBJ12SE)	\$17.00
Down Sides (UBP12DS)	\$17.00

NOTE: Additional leadtime should be expected for orders including piping, braiding and/or hemming. Please contact a UA Sale Rep for updates.

PIPE & BRAID AVAILABLE COLORS	
Pipe 3/16"	
Braid 1/2"	

CUSTOM HOCKEY TWILL DECORATION OPTIONS

FULL BLOCK LETTERS & NUMBERS	ONE COLOR	TWO COLORS	NAME PLATES	ONE COLOR
2"	\$4.50	\$6.50	3.5" x 16" Sewn-on Nameplate with 3" Letters	\$46.00
3"	\$5.00	\$7.50	Loose Sublimated Nameplate with Player Name	\$25.00
4"	\$5.50	\$8.50	Loose Nameplate 3.5" x 16"	\$7.00
5"	\$6.00	\$9.00	SUBLIMATED TWILL FOR LOGOS AND MASCOTS: UP TO 4 COLORS	
6"	\$6.50	\$10.00	6" x 6"	\$12.00
7"	\$7.00	\$10.50	9" x 9"	\$16.50
8"	\$7.50	\$11.00	12" x 12"	\$25.50
10"	\$8.50	\$13.00		
12"	\$9.50	\$15.00		
Punctuations (Custom Only)	\$3.00	\$5.00		

*Available only in Custom/ArmourFuse

ADDITIONAL LENGTH OPTIONS (ARMOURFUSE ONLY - \$10 FOR ALL -/+ OPTIONS)

BASEBALL/SOFTBALL

TYPE	ADJUSTMENT	CODE
JERSEYS	Add 2" body length	UIX2BDY
	Add 4" body length	UIX4BDY
PANTS	Subtract 2" from inseam	UISHTN2
	Add 2" to inseam length	UIX2INS
	Add 4" to inseam length	UIX4INS

FOOTBALL

TYPE	ADJUSTMENT	CODE
JERSEYS	Shorten to waist length	
PANTS	Add 2" to inseam length	UIX2INS

LACROSSE/ FIELD HOCKEY

TYPE	ADJUSTMENT	CODE
JERSEYS	Add 2" body length	UIX2BDY
SHORTS	Subtract 1" from inseam	UISHTN1
	Subtract 2" from inseam	UISHTN2
	Add 1" to inseam length	UIX1INS
	Add 2" to inseam length	UIX2INS
KILTS	Add 1" to inseam length	UIX1INS
	Add 2" to inseam length	UIX2INS

BASKETBALL

TYPE	ADJUSTMENT	CODE
JERSEYS	Add 2" body length	UIX2BDY
	Add 4" body length	UIX4BDY
	Add 6" body length	UIX6BDY
SHORTS	Subtract 1" from inseam	UISHTN1
	Add 1" to inseam length	UIX1INS
	Add 2" to inseam length	UIX2INS
	Add 3" to inseam length	UIX3INS
SHOOTING SHIRTS	Add 2" body, 1" sleeve	UIX2B1S
	Add 4" body, 2" sleeve	UIX4B2S
	Add 6" body, 3" sleeve	UIX6B3S

SOCCER

TYPE	ADJUSTMENT	CODE
JERSEYS	Add 2" body length	UIX2BDY
SHORTS	Subtract 1" from inseam	UISHTN1
	Subtract 2" from inseam	UISHTN2
	Add 1" to inseam length	UIX1INS
	Add 2" to inseam length	UIX2INS

TRACK & FIELD

TYPE	ADJUSTMENT	CODE
JERSEYS	Add 2" body length	UIX2BDY
LOOSE SHORTS*	Subtract 1" from inseam	UISHTN1
	Add 1" to inseam length	UIX1INS

*UITS2M & UITS2W ONLY

TRAINING

TYPE	ADJUSTMENT	CODE
JERSEYS	Add 2" body length	UIX2BDY
	Add 4" body length	UIX4BDY
	Add 6" body length	UIX6BDY
SHORTS	Subtract 1" from inseam	UISHTN1
	Subtract 2" from inseam	UISHTN2
	Add 1" to inseam length	UIX1INS
	Add 2" to inseam length	UIX2INS
	Add 3" to inseam length	UIX3INS

VOLLEYBALL

TYPE	ADJUSTMENT	CODE
JERSEYS	Add 2" body length	UIX2BDY
	Add 1" sleeve length	UIX1SL
SHORTS	Subtract 1" from inseam	UISHTN1
	Subtract 2" from inseam	UISHTN2

EMBROIDERY

MASCOTS (STOCK ONLY) LIST PRICE

Mascot	\$11.00
Mascot with One Line	\$12.00
Mascot with Two Lines	\$13.00
American Flag	\$11.00
Small/Homeplate	\$6.00

DIGITIZING (STOCK AND ARMOURFUSE ONLY) LIST PRICE

Stock Designs and Lettering	\$180.00
Custom Logos	Call for Quote

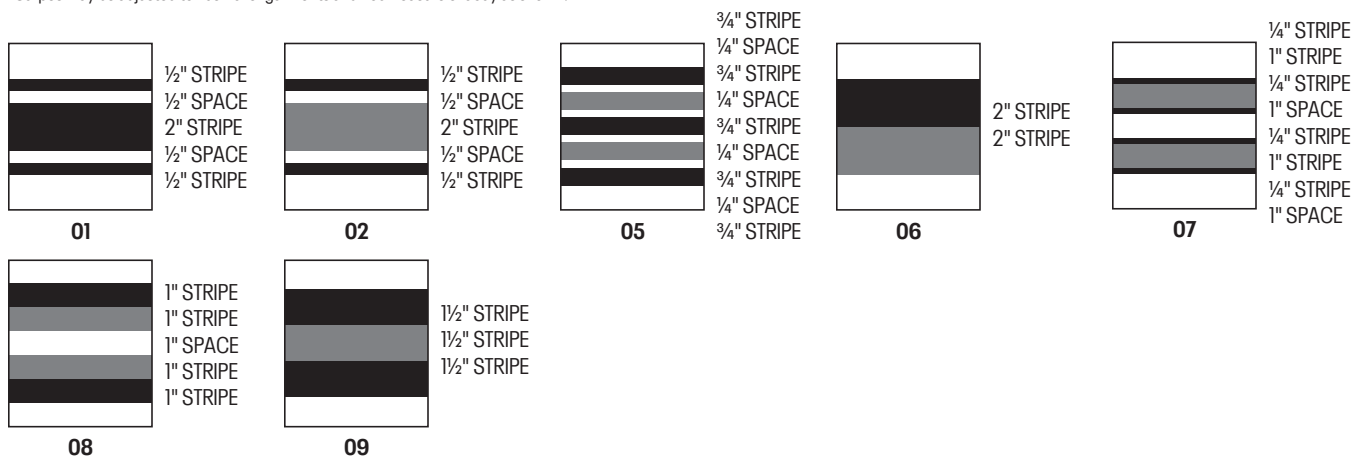
- Prices are based upon size of designs, not the number of colors. Prices are subject to change if design exceeds specifications.
- Dimensions are maximum space - unless specifically noted best judgement will be used.
- Letter styles are available horizontal or arched.
- No digitizing charge for team names.

- Flag size up to 2" by 3" (bigger area - call for quote)
- Minimum order charges apply for embroidery
- All designs require an additional digitizing charge, except:
 - 1) Digitized designs supplied on a disk
 - 2) Digitized design is a re-order of an existing design

STANDARD SLEEVE PRINT STRIPES

*OPTIONS - Code numbers listed below stripe patterns

*Stripes may be adjusted to fit smaller garments and not measure exactly as shown.



ARMOURFUSE® GRAPHIC OPTIONS



UNIFORM CARE INSTRUCTIONS

To enhance the appearance and extend the life of your uniforms, Under Armour recommends that you follow these cleaning and storing procedures:

DO NOT DRY CLEAN

DO NOT WASH IN HOT WATER

DO NOT USE CHLORINE BLEACH

DO NOT USE FABRIC SOFTENER

DO NOT WASH WHITES AND COLORS TOGETHER

DO NOT OVERLOAD THE WASHING MACHINE

DO NOT MACHINE DRY ON HIGH HEAT

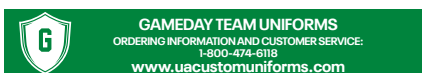
DO NOT LEAVE WET OR DAMP GARMENTS IN YOUR TRAVEL BAG, IN A PILE WITH OTHER CLOTHING OR IN WASHING MACHINE

- Pre wash uniform prior to use.
- Uniforms should always be laundered immediately after wearing. However, if this is not possible, rinse garments and hang individually on rust-proof hangers. (Moisture may cause color migration of acid dyes so we advise separating wet or damp uniforms.)
- Belts and any other contrasting color items should be washed separately from the garment.
- It is always advisable to test wash a single uniform according to directions before washing an entire load.
- Wash and rinse all garments in warm water (approx. 110°) with mild detergent. Remove promptly after wash cycle.
- For optimum results, hang garments (especially those with elastane) to dry. If you cannot hang dry, machine dry on the lowest setting. Turn jerseys inside out before machine drying. Remove items from dryer immediately upon completion of the cycle. (Excessive heat can cause fabric shrinkage, discoloration, and cracking and peeling of vinyl plastisol lettering inks.)
- Make sure uniforms are completely dry before storing. Store in a dry area to prevent mildew. Protect them from sunlight and fluorescent light to prevent yellowing.

PLEASE NOTE: Under Armour will not be responsible for uniforms that are damaged due to improper care and maintenance. Failure to follow our specified care instructions will void all guarantees.

UNIFORM FILL-IN LIFECYCLE

LAST SHOWN IN CATALOG	LAST FILL-IN SEASON	LAST FILL-IN SHIP
SP'22	SP'25	6/15/2025
FA'22	FA'25	12/15/2025
WI'22	WI'25	3/15/2026
SP'23	SP'26	6/15/2026
FA'23	FA'26	12/15/2026
W'23	W'26	3/15/2027
SP'24	SP'27	6/15/2027
FA'24	FA'27	12/15/2027
WI'24	WI'27	3/15/2028
SP'25	SP'28	6/15/2028
FA'25	FA'28	12/15/2028
W'25	W'28	3/15/2029



GAMEDAY TEAM UNIFORMS
ORDERING INFORMATION AND CUSTOMER SERVICE:
1-800-474-6118
www.uacustomuniforms.com



ARMOURFUSE TEAM UNIFORMS
ORDERING INFORMATION AND CUSTOMER SERVICE:
1-888-871-0990
www.underarmourteamuniforms.com



STOCK TEAM UNIFORMS
ORDERING INFORMATION AND CUSTOMER SERVICE:
1-888-871-0990
www.underarmourteamuniforms.com

ORDERING INFORMATION

Guarantee:

The materials and workmanship of our garments are guaranteed when given fair treatment and used under normal conditions.

Color Matching:

Scientifically, it is not possible to achieve a perfect color match from one dye lot to another. Therefore, we cannot guarantee a perfect match from order to order or from one fabric to another.

Color Abbreviation Key:

The following abbreviations may be used when ordering merchandise.

BG Baseball Gray	EB Electric Blue	PI Pink	SI Silver Grey
BK Black	GP Graphite	PK Powderkeg Blue	TI Taxi
BR Brown	KE Team Kelly Green	PO Poison	TE Teal
CA Cardinal	LG Steeltown Gold	PU Purple	TO Texas Orange
CB Carolina Blue	MA Maroon	RO Royal	TP Tropic Pink
CP Capri	NA Midnight Navy	RU Gold Rush	VG Team Vegas Gold
DG Forest Green	OR Dark Orange	SC University Red	WH White

Price Policy:

All catalog prices are list or suggested retail. Prices are subject to change without notice. Merchandise will be invoiced based on the prices in effect at the time the order is placed.

Terms:

Prices are FOB shipping point. Payment is due Net 30.

Minimum Order Charges:

A handling charge of \$10.00 will be added to orders of less than \$150.00 list. Custom and GamedaySelect fill-in minimum order is 6 units per style and color. A 100% surcharge will be applied to orders of 1-2 units, and a 50% surcharge for orders of 3-5 units.

Lettered Orders for COD Shipment:

A 50% deposit is required on all lettered orders calling for COD shipment.

Delivery:

Shipments will always be made by the fastest, least expensive means possible. The customer will assume any additional expense required to expedite delivery.

Order Cancellations:

Cancellations must be received at least one day prior to the ship date. Special order garments cannot be cancelled after they have been cut. Lettered garments cannot be cancelled after they have been printed or sewn.

Returns:

Claims must be reported to our office within 10 working days of merchandise receipt. Returns cannot be made after 30 days of the invoice date. All returns for plain merchandise must be clearly marked with an authorization number or label obtained from our office. All returns for lettered merchandise must be clearly marked "LETTERING." When requesting an authorization label, the following information is required: Reason for return, Invoice #, Style #, Color, Size/Quantity. An authorization label will then be sent to you to prepare the merchandise for return shipment. We reserve the right to repair, replace or issue credit for any merchandise returned. A 15% restocking fee and shipping charges will be charged for merchandise returned that is either not damaged or the damage is determined not to be our fault. All worn garments must be properly laundered prior to return or they will not be accepted.

All custom and custom-stock uniforms may not be returned under any circumstances if delivered properly.

Shortages:

All claims must be made within 10 days of the invoice date.

New Accounts:

All new accounts must be opened through your local sales representative. New accounts that do not have a Dunn and Bradstreet rating will be shipped COD until a credit line has been established.

Samples:

Samples will be entered and billed as a regular order. Samples cannot be returned without prior approval from our office.

Imprint Orders:

All imprint orders must be emailed, mailed or faxed in with detailed instructions on UA order forms. Imprint orders will not be taken by phone. Once garments have been lettered, the order cannot be cancelled or returned.

Under Armour will not be responsible for any items not checked for order accuracy or sizing before being sent to a printer / screener. We will not be responsible for shrinkage, defects, or damages caused during the imprinting of our garments by sources other than our own lettering department. Screenprinting sublimated uniforms can cause color migration. We do not recommend screenprinting on sublimated garments.

Photography is the property of Under Armour and is not to be used without written authorization.

NOTES:

COMPRESSION

FITTED

LOOSE

MEN'S



Ultra-tight, second skin fit that keeps you locked in & makes you feel like you can do anything.



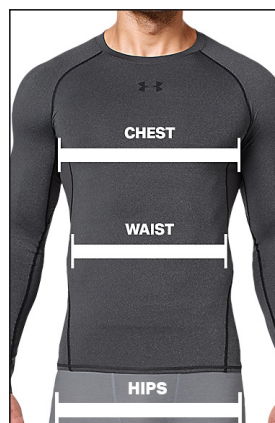
A slimmer, athletic cut that allows total mobility but eliminates the bulk of extra fabric.



Fuller cut for complete comfort, total range of motion & greater breathability.

	US SIZE	CHEST (IN)	WAIST (IN)	HIP (IN)
SM	26-28	34-37	29-31	34-36
MD	30-32	37-41	31-34	36-39
LG	34-36	41-44	34-37	39-42
XL	38-40	44-48	37-41	42-46
2XL	42-44	48-52	41-45.5	46-50
3XL	46-48	52-56	45.5-50	50-54
4XL	50-52	56-60	50-54.5	54-58
5XL	54-56	60-64	54.5-59	58-62

HOW TO MEASURE



CHEST: Place the tape measure under your arms at the fullest part of your chest, wrap around your body until your fingers meet and mark the measurement

WAIST: Measure around your natural waistline – right above your hips. Be careful not to squeeze too tight to allow a little give.

HIPS: With your feet together, measure around the fullest part of your hips to ensure you'll have enough room to move comfortably.

BOYS

FITTED

LOOSE



A slimmer, athletic cut that allows total mobility but eliminates the bulk of extra fabric.



Fuller cut for complete comfort, total range of motion & greater breathability.

	US SIZE	CHEST (IN)	WAIST (IN)	HIP (IN)
YXS	7	25-26	23-24	26-27
YSM	8	26-27	24-25	27-28
YMD	10-12	27-29	25-27	28-31
YLG	14-16	29-32.5	27-30	31-34
YXL	18-20	32.5-35.5	30-33	34-37

HOW TO MEASURE



CHEST: Place the tape measure under your arms at the fullest part of your chest, wrap around your body until your fingers meet and mark the measurement

WAIST: Measure around your natural waistline – right above your hips. Be careful not to squeeze too tight to allow a little give.

HIPS: With your feet together, measure around the fullest part of your hips to ensure you'll have enough room to move comfortably.

WOMEN'S

COMPRESSION



Ultra-tight, second skin fit that keeps you locked in & makes you feel like you can do anything.

FITTED



Sits close to the skin for a streamlined fit without the squeeze of compression.

LOOSE



Fuller, more generous cut for enhanced range of motion & an effortlessly relaxed fit.

	US SIZE	CHEST (IN)	WAIST (IN)	HIP (IN)
XS	0-2	32.5-33.5	25.5-27	34.5-36
S	4-6	33.5-36	27-29	36-38
M	8-10	36-38	29-31	38-40
L	12-14	38-41	31-34	40-43
XL	16	41-44	34-37	43-46
2XL	18	44-47	37-40	46-49
3XL	20	47-50	40-43	49-52
4XL	22	50-53	43-46	52-55

HOW TO MEASURE



CHEST: Place the tape measure under your arms at the fullest part of your chest, wrap around your body until your fingers meet and mark the measurement

WAIST: Measure around your natural waistline – right above your hips. Be careful not to squeeze too tight to allow a little give.

HIPS: With your feet together, measure around the fullest part of your hips to ensure you'll have enough room to move comfortably.

GIRLS

FITTED



Sits close to the skin for a streamlined fit without the squeeze of compression.

LOOSE



Fuller, more generous cut for enhanced range of motion & an effortlessly relaxed fit.

	US SIZE	CHEST (IN)	WAIST (IN)	HIP (IN)
YXS	7	25-26.5	23-24	26-28
YSM	8	26.5-27.5	24-24.5	28-29
YMD	10-12	27.5-30.5	24.5-26.5	29-32.5
YLG	14-16	30.5-34	26.5-30.5	32.5-36.5
YXL	18-20	34-36	30.5-32.5	36.5-38.5

HOW TO MEASURE



CHEST: Place the tape measure under your arms at the fullest part of your chest, wrap around your body until your fingers meet and mark the measurement

WAIST: Measure around your natural waistline – right above your hips. Be careful not to squeeze too tight to allow a little give.

HIPS: With your feet together, measure around the fullest part of your hips to ensure you'll have enough room to move comfortably.

WEST

GREG ROMINE
719.238.9244
gromine@underarmour.com
WA // OR // CA // NV //
AZ // UT // AK // HI

HAYLEY GILLMORE
303.562.6053
hgillmore@underarmour.com
East & North TX // OK // CO //
WY // ID // MT

FRANK WEBER
618.540.3955
fweber@underarmour.com
IL // MO // IA // MN //
NE // KS // ND // SD

BLAKE KUENZI
405.488.4942
blake.kuenzi@underarmour.com
NM // Central, South & West Texas

EAST

MONTE GIBBS
662.801.3039
mgibbs@underarmour.com
TN // LA // AL //
MS // AR // KY

DAN WILLIAMS
352.672.1676
dwilliams@underarmour.com
NC // SC // GA // FL

TONY DONOFRIO
NATIONAL SALES MANAGER
419.356.9742
tonyd@underarmour.com
WI // MI // IN // OH

GARY POWERS
410.746.3790
gpowers@underarmour.com
MD // DC // VA // WV //
Eastern PA

BOB BARTLETT
315.380.6505
bobb@underarmour.com
NY // Western PA

JAY KELLEHER
443.615.0462
jkelleher@underarmour.com
New England // NJ

COLLEGIATE

TOMMY AMICO
951.808.0367
tamico@underarmour.com
WEST

TODD LOCKLEAR
410.454.6572
tlocklear@underarmour.com
EAST

CHRIS PORTS
443.220.1009
cports@underarmour.com
MID ATLANTIC

BELLA GARONE
631.307.0009
isabella.garone@underarmour.com
NORTHEAST // SOUTH

LICENSEES

FOUNDER SPORT GROUP
Stock & Armourfuse Uniforms
www.underarmourteamuniforms.com
888.871.0990
UAStatus@foundersportgroup.com

POWERS ATHLETIC
Custom Uniforms
www.uacustomuniforms.com
800.474.6118
customerservice@powersathletic.com

USB
McDavid & Shock Doctor
Water Bottles
657.383.4438
UA@unitedspb.com



TEL: 1.888.828.1547 / B2B: ARMOURHOUSE.UNDERARMOUR.COM

COLLEGIATE

TEAMSPO RTS COLLEGIATE / TEAMSPO RTS.COLLEGIATE@UNDERARMOUR.COM

EAST

TEAM SPORTS SE / TEAMSPORTSSE@UNDERARMOUR.COM
TEAM SPORTS NE / TEAMSPORTSNE@UNDERARMOUR.COM

WEST

TEAM SPORTS WC / TEAMSPORTSWC@UNDERARMOUR.COM
TEAM SPORTS SW / TEAMSPORTSSW@UNDERARMOUR.COM

ALL TEAM SPORTS ORDERS AND QUESTIONS PLEASE USE THE FOLLOWING:

1.888.828.1547
Corporate Headquarters
1020 Hull Street
Baltimore, MD 21230

CORPORATE OFFICE HOURS OF OPERATION

Monday through Friday, 8:30am – 5:30pm, EST.

UNDER ARMOUR® B2B – ONLINE ORDERING

armourhouse.underarmour.com

- 24/7 access to check inventory and place orders
- Ability to track orders and shipments
- Priority product allocation
- Faster processing time

UNDER ARMOUR® B2B – SUPPORT

B2B_support@underarmour.com

UNDER ARMOUR® RETURN POLICY

Under Armour® stands behind its gear and EXPECTS nothing less than perfection. If you have received a defective product, an incorrect size, or an incorrect order, please contact us immediately for a return authorization number so that we can quickly process your return and ensure your satisfaction.

ALL RETURNS MUST BE COMPLETED WITHIN 30 DAYS OF RECEIPT AND MUST BE IN REASONABLE CONDITION. ALL RETURNS MUST HAVE THE RA# CLEARLY MARKED ON THE CARTON. ALL RETURNS ARE SUBJECT TO A 15% RE-STOCKING FEE.

Should you need to return or exchange an item, you MUST include your RA#, a copy of your invoice, and an explanation in writing as to why you are returning the item. Send your return to the marked address on your pack list. If you are exchanging merchandise, you are responsible for the cost of returning the product. Original shipping costs are non-refundable. All returned merchandise must be received in new, resalable condition.

ODH RETURNS:

Under Armour Returns
RA#
7030 Tradepoint Ave
Dock Door 69
Sparrows Point, MD 21219

RIALTO RETURNS:

Under Armour Returns
RA#
2510 W Walnut Ave
Rialto, CA 92376

NASHVILLE RETURNS:

Under Armour Returns
RA#
13 Athlete's Way
Mt Juliet, TN 37122

UNDER ARMOUR® CANCELLATION POLICY

Any request for cancellation of an order for UA products must be made, in writing, through the customer's UA Sales Representative. A request to cancel an order must be made more than 30 days before the customer's original desired ship date. All cancellations are subject to UA approval.

ALL PRICES SET FORTH HEREIN ARE SUBJECT TO CHANGE WITHOUT NOTICE.

© 2025 Under Armour®. All rights reserved. All trademarks, images, photographs, logos, and graphics are owned or controlled by Under Armour®.

Confidential and business proprietary information for internal Under Armour®, Inc. use only. Reproduction is strictly prohibited.

UNDER ARMOUR® PERFORMANCE
WINTER 2025