



LACROSSE

SPRING 2026



UNDER ARMOUR.

PROTECT THIS HOUSE.®



VISION

TO INSPIRE YOU WITH PERFORMANCE
SOLUTIONS YOU NEVER KNEW
YOU NEEDED BUT CAN'T IMAGINE
LIVING WITHOUT.

MISSION

UNDER ARMOUR
MAKES YOU BETTER.

LACROSSE —

- 001 M'S LACROSSE UNIFORMS
- 018 W'S LACROSSE UNIFORMS
- 033 LACROSSE FOOTWEAR
- 035 LACROSSE SOCKS
- 036 LACROSSE BAGS
- 037 LACROSSE PROTECTIVE
- 038 MEN'S AF TRAINING
- 047 WOMEN'S AF TRAINING
- 051 UNIFORM ORDERING INFO



GAMEDAY LACROSSE

Select Custom UA Team Uniforms. Set jersey and short pricing – all decoration included. Multiple innovative fabrics available

GAMEDAY PROGRAM DETAILS

1 price jersey and short – fully decorated includes:

- 2 number locations and team name on jersey
- 1 or 2 color screen print or sublimated tackle twill (includes prints)

All catalog fonts included.

Custom Artwork Team Name + \$10.00 per location (art charge will apply if vector art is not provided).

2", 3" or 4" Team Name | 8" or 10" Front Number | 10" or 12" Back Number

Sub twill patch pricing (\$15 per location).





GAMEDAY LACROSSE



NEW

GAMEDAY X JERSEY

ADULT: XS-2XL, OVERSIZE 3XL

SHIP: 10/25/2025

STYLE	SIZE	PRICE
UL019JM (M)	XS-2XL	\$210.00

Stretch woven main body fabric paired with breathable mesh back paneling. Updated short sleeve design lines for premium onfield look and feel. Signature UA Collar construction.

WHT	SLG	GPH	BLK	PUR	MDN	RYL	VBL
FGR	TKG	DKO	RED	CRD	MAR	VDG	SGD



NEW

GAMEDAY X SHORTS

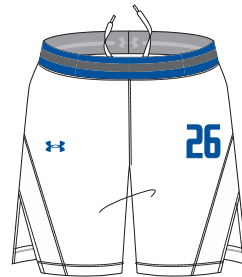
ADULT: XS-2XL, OVERSIZE 3XL

SHIP: 10/25/2025

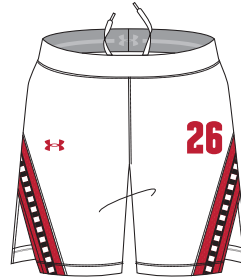
STYLE	SIZE	PRICE
UL020SM (M)	XS-2XL	\$135.00

Stretch woven main body fabric paired with breathable mesh back paneling. Updated short inseam length and design lines for premium onfield look and feel. Drawstring elastic waistband and vented side split hem.

WHT	SLG	GPH	BLK	PUR	MDN	RYL	VBL
FGR	TKG	DKO	RED	CRD	MAR	VDG	SGD



CLASSIC STRIPES
SUBLIMATIONS AVAILABLE



TICKING
SUBLIMATIONS AVAILABLE



PRINTED
SUBLIMATIONS AVAILABLE



FACEOFF
SUBLIMATIONS AVAILABLE



MPK
SUBLIMATIONS AVAILABLE

OVERSIZED SURCHARGE +\$5 PER SIZE | BASE UNIFORM APPROVED FOR HS PLAY



GAMEDAY LACROSSE



NEW

GAMEDAY X RETRO JERSEY

ADULT: XS-2XL, OVERSIZE 3XL

SHIP: 10/25/2025

STYLE	SIZE	PRICE
UL021JM (M)	XS-2XL	\$210.00

Throwback mesh main body fabric paired with stretch woven yoke paneling. Updated short sleeve design lines for premium onfield look and feel. Signature UA Collar construction.

WHT	SLG	GPH	BLK	PUR	MDN	RYL	VBL
FGR	TKG	DKO	RED	CRD	MAR	VGD	SGD



STRIPES

SUBLIMATIONS AVAILABLE

BIG STRIPE

SUBLIMATIONS AVAILABLE



NEW

GAMEDAY X SHORTS

ADULT: XS-2XL, OVERSIZE 3XL

SHIP: 10/25/2025

STYLE	SIZE	PRICE
UL020SM (M)	XS-2XL	\$135.00

Stretch woven main body fabric paired with breathable mesh back paneling. Updated short inseam length and design lines for premium onfield look and feel. Drawstring elastic waistband and vented side split hem.

WHT	SLG	GPH	BLK	PUR	MDN	RYL	VBL
FGR	TKG	DKO	RED	CRD	MAR	VGD	SGD

OVERSIZED SURCHARGE +\$5 PER SIZE | BASE UNIFORM APPROVED FOR HS PLAY



GAMEDAY LACROSSE

MACHINE JERSEY & SHORT

ADULT: SM-2XL, OVERSIZE 3XL

SHIP: C/O

JERSEY	SIZE	PRICE
UL017JM (M)	SM-2XL	\$145.00

Dyed warp knit pin hole mesh fabrication.
Thin collar binding. 2" sublimated sleeve cuffs.
Contrast side seam binding.

SHORT	SIZE	PRICE
UL018SM (M)	SM-2XL	\$95.00

Dyed warp knit pin hole mesh fabrication.
Internal drawcord. Oversized hem venting detail.
Sublimated hem paneling to match jersey.
Contrast side seam binding. 7" inseam.

WHT	SLG	GPH	BLK	PUR	MDN	RYL	VBL
FGR	TKG	DKO	RED	CRD	MAR	VGD	SGD



MACHINE

MAN UP II JERSEY & SHORT

ADULT: SM-2XL, OVERSIZE 3XL

SHIP: C/O

JERSEY	SIZE	PRICE
UL015JM (M)	SM-2XL	\$155.00

Crewneck collar construction with set-in sleeves. The style is accented by piping along the collar, sleeve cuffs and shaped hem. Warp knit pinhole mesh with customized decoration. All decoration included in pricing.

SHORT	SIZE	PRICE
UL016SM (M)	SM-2XL	\$95.00

Lay-flat waistband construction to avoid cinching. The lower rear legs can be colorblocked, and are accented by piping along the hems. Warp knit pinhole mesh with customized decoration. 7" inseam.

WHT	SLG	GPH	BLK	PUR	MDN	RYL	VBL
FGR	TKG	DKO	RED	CRD	MAR	VGD	SGD



MAN UP II

OVERSIZED SURCHARGE +\$5 PER SIZE | BASE UNIFORM APPROVED FOR HS PLAY



ARMOURFUSE LACROSSE

Brilliant, vibrant team colors permanently fused directly into textiles. Limitless customization, all-inclusive pricing with exclusive UA designs and customized prints. 41 different colors and 18 prints available. 6 piece minimum order.





ARMOURFUSE LACROSSE

**ARMOURFUSE RETRO
CREWNECK JERSEY****ADULT:** SM-2XL, OVERSIZE 3XL**SHIP:** 10/25/2025

STYLE	SIZE	PACKAGE*	PRICE
UJLR4M (M)	SM-2XL	SUBLIMATED	\$111.50
		1-COLOR TWILL	\$160.50
		2-COLOR TWILL	\$170.50

Fully sublimated porthole mesh body with stretch knit sleeve and collar insets. Raglan sleeve for increased mobility and performance.

*PACKAGE INCLUDES TEAM NAME + FRONT & BACK NUMBERS
ADDITIONAL TWILL OPTIONS FOUND ON PAGE 54



STRIPES



PRINTED



TICKING

OVERSIZED SURCHARGE +\$5 PER SIZE | EXTENDED/SHORTENED LENGTHS OFFERED, SEE PAGE 55 FOR MORE INFO | BASE UNIFORM APPROVED FOR HS PLAY

ARMOURFUSE® UNIFORMS | ORDERING INFORMATION AND CUSTOMER SERVICE: 1-888-871-0990 | www.underarmourteamuniforms.com | FILL-IN LIFECYCLE TIMING FOUND ON PAGE 57. DECORATION OPTIONS AND ORDERING INFORMATION ARE AVAILABLE ON PAGES 51-57.



ARMOURFUSE LACROSSE

ARMOURFUSE RETRO JERSEY

ADULT: SM-2XL, OVERSIZE 3XL

STYLE	SIZE	PACKAGE*	PRICE
UJLR3M (M)	SM-2XL	SUBLIMATED	\$111.50
		1-COLOR TWILL	\$160.50
		2-COLOR TWILL	\$170.50

Fully sublimated porthole mesh body with stretch knit sleeve and collar insets. Raglan sleeve for increased mobility and performance.

*PACKAGE INCLUDES TEAM NAME + FRONT & BACK NUMBERS
ADDITIONAL TWILL OPTIONS FOUND ON PAGE 54

ARMOURFUSE RETRO SHORT

ADULT: SM-2XL, OVERSIZE 3XL

STYLE	SIZE	PRICE
UJLSR3M (M)	SM-2XL	\$106.50

Fully sublimated mini pindot mesh. 1.75" lightweight training inspired waistband. 7" standard inseam.



MARK UP



QUICK STICK

OVERSIZED SURCHARGE +\$5 PER SIZE | EXTENDED/SHORTENED LENGTHS OFFERED, SEE PAGE 55 FOR MORE INFO | BASE UNIFORM APPROVED FOR HS PLAY



ARMOURFUSE LACROSSE

ARMOURFUSE PRIMETIME JERSEY

ADULT: SM-2XL, OVERSIZE 3XL

STYLE	SIZE	PACKAGE*	PRICE
UJLP2M (M)	SM-2XL	SUBLIMATED	\$118.50
		1-COLOR TWILL	\$167.50
		2-COLOR TWILL	\$177.50

Fully sublimated Varsity Mesh. Offers increased breathability, faster dry times and better durability.

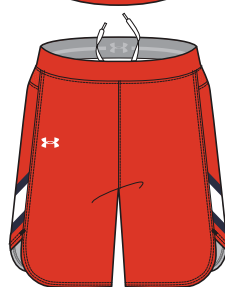
*PACKAGE INCLUDES TEAM NAME + FRONT & BACK NUMBERS
ADDITIONAL TWILL OPTIONS FOUND ON PAGE 54

ARMOURFUSE PRIMETIME SHORT

ADULT: SM-2XL, OVERSIZE 3XL

STYLE	SIZE	PRICE
UJLSP1M (M)	SM-2XL	\$108.50

Fully sublimated Varsity Mesh. Offers increased breathability, faster dry times and better durability. 7" inseam.



CELLY



CRASH



WIZARD



DRIP

OVERSIZED SURCHARGE +\$5 PER SIZE | EXTENDED/SHORTENED LENGTHS OFFERED, SEE PAGE 55 FOR MORE INFO | BASE UNIFORM APPROVED FOR HS PLAY

AF ARMOURFUSE® UNIFORMS | ORDERING INFORMATION AND CUSTOMER SERVICE: 1-888-871-0990 | www.underarmourteamuniforms.com | FILL-IN LIFECYCLE TIMING FOUND ON PAGE 57. DECORATION OPTIONS AND ORDERING INFORMATION ARE AVAILABLE ON PAGES 51-57.



ARMOURFUSE LACROSSE

ARMOURFUSE SHOWTIME JERSEY

LAST SEASON OFFERED

ADULT: SM-2XL, OVERSIZE 3XL

STYLE	SIZE	PACKAGE*	PRICE
UJLSIM (M)	SM-2XL	SUBLIMATED	\$106.50
		1-COLOR TWILL	\$155.50
		2-COLOR TWILL	\$165.50

Fully sublimated stretch pointelle mesh.
Raglan sleeve for increased mobility and performance.

*PACKAGE INCLUDES TEAM NAME + FRONT & BACK NUMBERS
ADDITIONAL TWILL OPTIONS FOUND ON PAGE 54



ARMOURFUSE SHOWTIME SHORT

LAST SEASON OFFERED

ADULT: SM-2XL, OVERSIZE 3XL

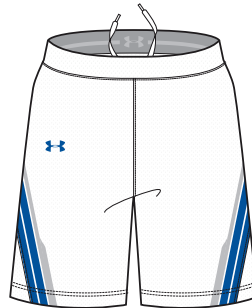
STYLE	SIZE	PRICE
UJLSSIM (M)	SM-2XL	\$96.00

Fully sublimated stretch pointelle mesh.
7" inseam.



STRIPES

NEW DESIGN FIRST SHIP: 10/25/2025



CHARGE



THUMP



SPLASH



STRUNG UP

OVERSIZED SURCHARGE +\$5 PER SIZE | EXTENDED/SHORTENED LENGTHS OFFERED, SEE PAGE 55 FOR MORE INFO | BASE UNIFORM APPROVED FOR HS PLAY



ARMOURFUSE LACROSSE

ARMOURFUSE GAMETIME JERSEY

ADULT: SM-2XL, OVERSIZE 3XL

YOUTH: YSM-YXL

STYLE	SIZE	PACKAGE*	PRICE
UJLG2M (M)	SM-2XL	SUBLIMATED	\$95.00
		1-COLOR TWILL	\$144.00
		2-COLOR TWILL	\$154.00
UJLG2Y (Y)	YSM-YXL	SUBLIMATED	\$90.00

Fully sublimated warp knit pin dot mesh.

*PACKAGE INCLUDES TEAM NAME + FRONT & BACK NUMBERS
ADDITIONAL TWILL OPTIONS FOUND ON PAGE 54

ARMOURFUSE GAMETIME SHORT

ADULT: SM-2XL, OVERSIZE 3XL

YOUTH: YSM-YXL

STYLE	SIZE	PRICE
UJLSG2M (M)	SM-2XL	\$90.00
UJLSG2Y (Y)	YSM-YXL	\$85.00

Fully sublimated warp knit pin dot mesh.

7" Men's inseam.



PRINTED

NEW DESIGN FIRST SHIP: 10/25/2025

STRIPES

NEW DESIGN FIRST SHIP: 10/25/2025

GAMETIME STYLES CONTINUE ON FOLLOWING PAGE

OVERSIZED SURCHARGE +\$5 PER SIZE | EXTENDED/SHORTENED LENGTHS OFFERED, SEE PAGE 55 FOR MORE INFO | BASE UNIFORM APPROVED FOR HS PLAY



ARMOURFUSE LACROSSE

GAMETIME STYLES CONTINUED FROM PREVIOUS PAGE

ARMOURFUSE GAMETIME JERSEY

ADULT: SM-2XL, OVERSIZE 3XL

YOUTH: YSM-YXL

STYLE	SIZE	PACKAGE*	PRICE
UJLG2M (M)	SM-2XL	SUBLIMATED	\$95.00
		1-COLOR TWILL	\$144.00
		2-COLOR TWILL	\$154.00
UJLG2Y (Y)	YSM-YXL	SUBLIMATED	\$90.00

Fully sublimated warp knit pin dot mesh.

*PACKAGE INCLUDES TEAM NAME + FRONT & BACK NUMBERS
ADDITIONAL TWILL OPTIONS FOUND ON PAGE 54

ARMOURFUSE GAMETIME SHORT

ADULT: SM-2XL, OVERSIZE 3XL

YOUTH: YSM-YXL

STYLE	SIZE	PRICE
UJLSG2M (M)	SM-2XL	\$90.00
UJLSG2Y (Y)	YSM-YXL	\$85.00

Fully sublimated warp knit pin dot mesh.

7" Men's inseam.



BOLT



RUMBLE



BREAKAWAY

OVERSIZED SURCHARGE +\$5 PER SIZE | EXTENDED/SHORTENED LENGTHS OFFERED, SEE PAGE 55 FOR MORE INFO | BASE UNIFORM APPROVED FOR HS PLAY



ARMOURFUSE LACROSSE

CLUB JERSEY

ADULT: SM-2XL, OVERSIZE 3XL

YOUTH: YSM-YXL

STYLE	SIZE	PRICE
UJLCBM (M)	SM-2XL	\$88.00
UJLCBY (Y)	YSM-YXL	\$77.50

Fully sublimated, large port hole mesh fabrication for a classic aesthetic. Sleeveless body with large arm openings. Wide, pin hole mesh scoop collar. Sublimated striping graphics available to colorblock.

LAX PRACTICE SHORT POCKETS

ADULT: SM-2XL, OVERSIZE 3XL

STYLE	SIZE	PRICE
UJLS2PM (M)	SM-2XL	\$88.00

Fully sublimated, 4-way stretch double-knit jacquard fabrication. Internal drawcord and exposed elastic waistband. 7" inseam.



SURGE

STREAK

LASER

OVERSIZED SURCHARGE +\$5 PER SIZE | EXTENDED/SHORTENED LENGTHS OFFERED, SEE PAGE 55 FOR MORE INFO | BASE UNIFORM APPROVED FOR HS PLAY



ARMOURFUSE LACROSSE

1-PLY REVERSIBLE JERSEY 2.0

ADULT: SM-2XL, OVERSIZE 3XL

YOUTH: YSM-YXL

STYLE	SIZE	PRICE
UJLJ2RM (M)	SM-2XL	\$82.50
UJLJ2RY (Y)	YSM-YXL	\$77.50

Fully sublimated, 4-way stretch double-knit jacquard fabrication. 1-ply reversible pinnie for intra-squad scrimmage. 3/8" collar, armhole and hem contrast binding. Improved fit from previous 1-ply styles.

LAX PRACTICE SHORT

ADULT: SM-2XL, OVERSIZE 3XL

YOUTH: YSM-YXL

STYLE	SIZE	PRICE
UJLS2M (M)	SM-2XL	\$82.50
UJLS2Y (Y)	YSM-YXL	\$77.50

Fully sublimated, 4-way stretch double-knit jacquard fabrication. Internal drawcord and exposed elastic waistband. 7" inseam.



FLASH



BLAST



LASER

THE BUNDLE

OVERSIZED SURCHARGE +\$5 PER SIZE | EXTENDED/SHORTENED LENGTHS OFFERED, SEE PAGE 55 FOR MORE INFO | BASE UNIFORM APPROVED FOR HS PLAY

AF ARMOURFUSE® UNIFORMS | ORDERING INFORMATION AND CUSTOMER SERVICE: 1-888-871-0990 | www.underarmourteamuniforms.com | FILL-IN LIFECYCLE TIMING FOUND ON PAGE 57. DECORATION OPTIONS AND ORDERING INFORMATION ARE AVAILABLE ON PAGES 51-57.



STOCK LACROSSE

Unique designs and advanced technology in stock. Pre-set designs, ready to ship. Best-in-class stock fabrications for all levels of play.



PACKAGE DECORATION

	1 COLOR	2 COLOR
--	---------	---------

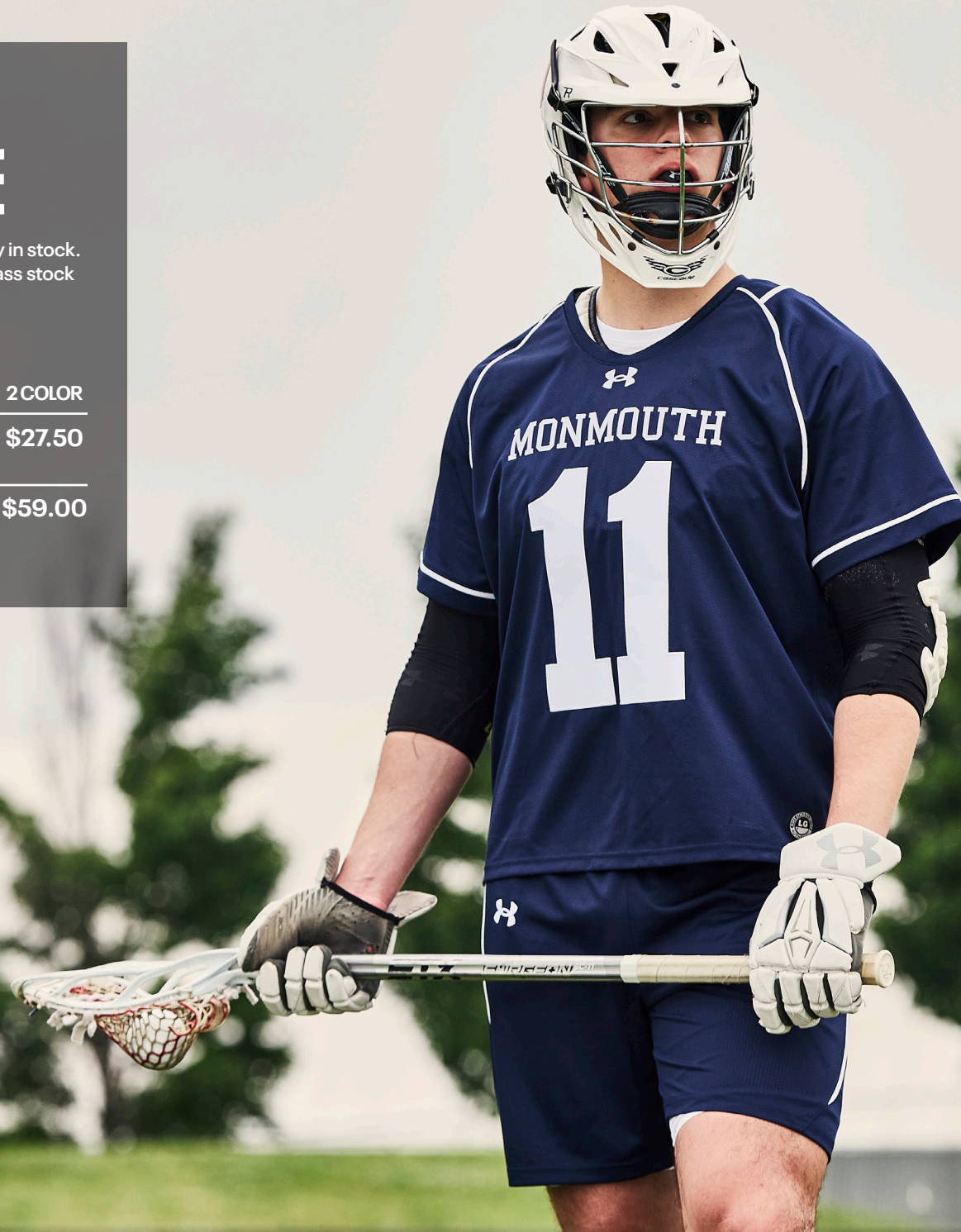
SCREENPRINT	\$17.50	\$27.50
--------------------	----------------	----------------

Team Name, Front/Back Numbers

TACKLE TWILL	\$49.00	\$59.00
---------------------	----------------	----------------

Team Name, Front/Back Numbers

Additional Stock Options on page 54.





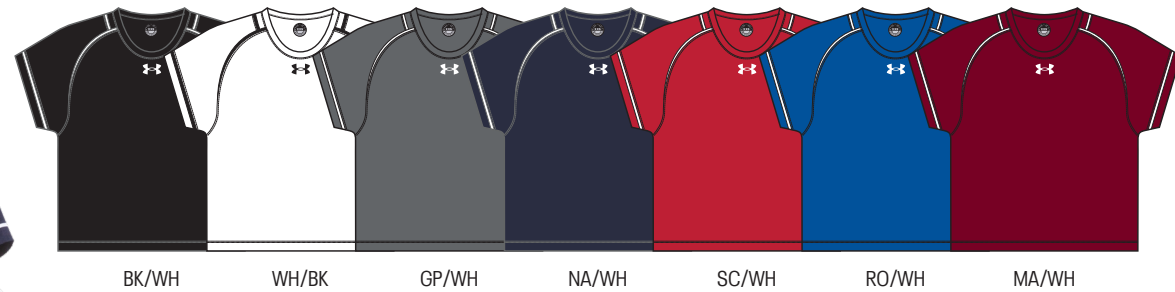
STOCK LACROSSE

GLIDE JERSEY

ADULT: SM-2XL, OVERSIZE 3XL

STYLE	SIZE	PACKAGE*	PRICE
ULJ160M (M)	SM-2XL	BLANK	\$46.50
		1-COLOR SCREEN	\$64.00
		2-COLOR SCREEN	\$74.00
		1-COLOR TWILL	\$95.50
		2-COLOR TWILL	\$105.50

*PACKAGE INCLUDES TEAM NAME/LOGO + FRONT & BACK PLAYER NUMBERS

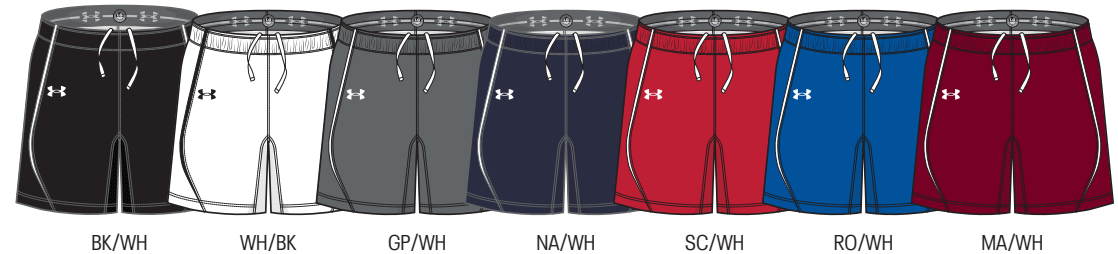


GLIDE SHORT

ADULT: SM-2XL, OVERSIZE 3XL

STYLE	SIZE	PACKAGE*	PRICE
ULS560M (M)	SM-2XL	BLANK	\$46.50
		1-COLOR SCREEN	\$52.00
		2-COLOR SCREEN	\$57.00
		1-COLOR TWILL	\$68.50
		2-COLOR TWILL	\$73.50

*PACKAGE INCLUDES TEAM NAME/LOGO



OVERSIZED SURCHARGE +\$5 PER SIZE



STOCK LACROSSE

GILMAN COLORBLOCK PINNIE

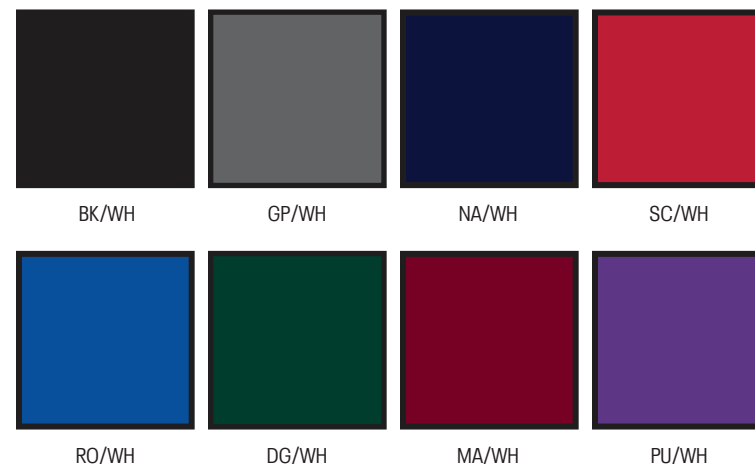
ADULT: SM-2XL, OVERSIZE 3XL

YOUTH: YSM-YXL

STYLE	SIZE	PACKAGE*	PRICE
ULJ195M (M)	SM-2XL	BLANK	\$20.00
		1-COLOR SCREEN	\$55.00
		2-COLOR SCREEN	\$75.00
ULJ195Y (Y)	YSM-YXL	BLANK	\$19.00

Warp-knit tricot mesh in pinnie style.

Waist length lacrosse cut bottom hem.

*PACKAGE INCLUDES TEAM NAME/LOGO + FRONT
& BACK PLAYER NUMBERS ON BOTH SIDES

OVERSIZED SURCHARGE +\$5 PER SIZE



STOCK LACROSSE

GILMAN PINNIE REVERSIBLE

ADULT: SM-2XL, OVERSIZE 3XL

YOUTH: YSM-YXL

STYLE	SIZE	PACKAGE*	PRICE
ULJ190M (M)	SM-2XL	BLANK	\$16.00
		1-COLOR SCREEN	\$51.00
		2-COLOR SCREEN	\$71.00
ULJ190Y (Y)	YSM-YXL	BLANK	\$13.50

Warp-knit tricot mesh in racerback pinnie style.
Waist length lacrosse cut bottom hem.

*PACKAGE INCLUDES TEAM NAME/LOGO + FRONT
& BACK PLAYER NUMBERS ON BOTH SIDES



BK/WH GP/WH NA/WH SC/WH RO/WH DG/WH MA/WH PU/WH OR/WH

TRIPLE DOUBLE SHORT

ADULT: SM-2XL, OVERSIZE 3XL

YOUTH: YSM-YXL

STYLE	SIZE	PACKAGE*	PRICE
UKS590M (M)	SM-2XL	BLANK	\$19.00
		1-COLOR SCREEN	\$24.50
		2-COLOR SCREEN	\$29.50
UKS590Y (Y)	YSM-YXL	BLANK	\$16.50

100% ventilated tricot mesh polyester with
internal liner. Men's inseam: 9", youth inseam: 8".

*PACKAGE INCLUDES TEAM LOGO ONLY (PER LOCATION)



BK/WH GP/WH NA/WH SC/WH RO/WH DG/WH MA/WH PU/WH CB/WH OR/WH CA/WH

OVERSIZED SURCHARGE +\$5 PER SIZE



ARMOURFUSE LACROSSE

Brilliant, vibrant team colors permanently fused directly into textiles. Limitless customization, all-inclusive pricing with exclusive UA designs and customized prints. 41 different colors and 18 prints available. 6 piece minimum order.





ARMOURFUSE LACROSSE

**ARMOURFUSE PRIMETIME 2.0
SHORT SLEEVE JERSEY**

ADULT: XS-2XL, OVERSIZE 3XL

SHIP: 10/25/2025

SHORT SLEEVE	SIZE	PRICE
UJLP3W (W)	XS-2XL	\$99.00

Breathable pindot mesh body paired with stretch woven collar and sleeve cuffs. Updated design lines for premium onfield look and feel. Signature UA Collar construction.

**ARMOURFUSE PRIMETIME 2.0 SHORT**

ADULT: SM-2XL, OVERSIZE 3XL

SHIP: 10/25/2025

SHORT	SIZE	PRICE
UJLSP2W (W)	XS-2XL	\$90.00

Super-soft stretch woven body paired with breathable pindot mesh paneling. Drawcord elastic waistband with internal branding details.



STRIPES

PRINT

FUTURE PLAID

DRAW

MPK

GRADIENT

OVERSIZED SURCHARGE +\$5 PER SIZE | EXTENDED/SHORTENED LENGTHS OFFERED, SEE PAGE 55 FOR MORE INFO | BASE UNIFORM APPROVED FOR HS PLAY

AF ARMOURFUSE® UNIFORMS | ORDERING INFORMATION AND CUSTOMER SERVICE: 1-888-871-0990 | www.underarmourteamuniforms.com | FILL-IN LIFECYCLE TIMING FOUND ON PAGE 57. DECORATION OPTIONS AND ORDERING INFORMATION ARE AVAILABLE ON PAGES 51-57.



ARMOURFUSE LACROSSE

**ARMOURFUSE PRIMETIME 2.0
RACERBACK JERSEY****ADULT:** XS-2XL, OVERSIZE 3XL**SHIP:** 10/25/2025

RACERBACK	SIZE	PRICE
UJLP4W (W)	XS-2XL	\$95.00

Breathable pindot mesh body paired with stretch woven collar and sleeve cuffs. Updated design lines for premium onfield look and feel. Signature UA Collar construction.

**ARMOURFUSE PRIMETIME 2.0 KILT****ADULT:** SM-2XL, OVERSIZE 3XL**SHIP:** 10/25/2025

KILT	SIZE	PRICE
UJLP2W (W)	XS-2XL	\$90.00

Super-soft stretch woven body paired with breathable pindot mesh paneling. Updated stretch knit waistband for premium wearing experience.



STRIPES

PRINT

FUTURE PLAID

DRAW

MPK

GRADIENT

OVERSIZED SURCHARGE +\$5 PER SIZE | EXTENDED/SHORTENED LENGTHS OFFERED, SEE PAGE 55 FOR MORE INFO | BASE UNIFORM APPROVED FOR HS PLAY

ARMOURFUSE® UNIFORMS | ORDERING INFORMATION AND CUSTOMER SERVICE: 1-888-871-0990 | www.underarmourteamuniforms.com | FILL-IN LIFECYCLE TIMING FOUND ON PAGE 57. DECORATION OPTIONS AND ORDERING INFORMATION ARE AVAILABLE ON PAGES 51-57.



ARMOURFUSE LACROSSE

ARMOURFUSE PRIMETIME JERSEYS

ADULT: XS-2XL, OVERSIZE 3XL

SHORTSLEEVE	SIZE	PRICE
UJLP2W (W)	XS-2XL	\$96.00
RACERBACK	SIZE	PRICE
UJLP1W (W)	XS-2XL	\$91.00

Super-soft & breathable all-over pin-dot mesh construction. Classic bomber crew inspired neck. Shaped hem.

ARMOURFUSE PRIMETIME KILT & 5" SHORT

ADULT: XS-2XL, OVERSIZE 3XL

KILT	SIZE	PRICE
UJLKP1W (W)	XS-2XL	\$85.50
5" SHORT	SIZE	PRICE
UJLSP1W (W)	XS-2XL	\$85.50

Super-soft & breathable all-over pin-dot mesh construction. Encased elastic waistband with internal wordmark detail. Notched hem for added breathability & mobility. Shaped hem & design lines for a more feminine look.

ARMOURFUSE TIE HEADBAND

ADULT: OSFA

STYLE	SIZE	PRICE
UJGB2W (W)	OSFA	\$34.00

Signature HeatGear® fabrication with 4-way stretch. Customizable with tonal color or UA print; ability to drop in team name, team logo, player name, or player number. Interior silicone grip band to lock in place. 34" (L) x 2" (H).



BLK WHT GPH MDN RED RYL



THROTTLE



CONTROL



MISSION

OVERSIZED SURCHARGE +\$5 PER SIZE | EXTENDED/SHORTENED LENGTHS OFFERED, SEE PAGE 55 FOR MORE INFO | BASE UNIFORM APPROVED FOR HS PLAY

AF ARMOURFUSE® UNIFORMS | ORDERING INFORMATION AND CUSTOMER SERVICE: 1-888-871-0990 | www.underarmourteamuniforms.com | FILL-IN LIFECYCLE TIMING FOUND ON PAGE 57. DECORATION OPTIONS AND ORDERING INFORMATION ARE AVAILABLE ON PAGES 51-57.



ARMOURFUSE LACROSSE

ARMOURFUSE SHOWTIME JERSEYS

LAST SEASON OFFERED

ADULT: XS-2XL, OVERSIZE 3XL

SHORTSLEEVE	SIZE	PRICE
UJLSIW (W)	XS-2XL	\$91.00
RACERBACK	SIZE	PRICE
UJLVSIW (W)	XS-2XL	\$85.50

Signature 4-way stretch HeatGear front, ventilated mesh back for optimal performance. Updated neckline construction.



CHASE



BREAKOUT



PURSUIT



PRESSURE

ARMOURFUSE SHOWTIME KILT & 5" SHORT

LAST SEASON OFFERED

ADULT: XS-2XL, OVERSIZE 3XL

KILT	SIZE	PRICE
UJLKSIW (W)	XS-2XL	\$80.50
5" SHORT	SIZE	PRICE
UJLSSIW (W)	XS-2XL	\$80.50

Signature 4-way stretch HeatGear front, ventilated mesh side inserts for optimal performance. Zero-distraction mesh waistband.



OVERSIZED SURCHARGE +\$5 PER SIZE | EXTENDED/SHORTENED LENGTHS OFFERED, SEE PAGE 55 FOR MORE INFO | BASE UNIFORM APPROVED FOR HS PLAY

AF ARMOURFUSE® UNIFORMS | ORDERING INFORMATION AND CUSTOMER SERVICE: 1-888-871-0990 | www.underarmourteamuniforms.com | FILL-IN LIFECYCLE TIMING FOUND ON PAGE 57. DECORATION OPTIONS AND ORDERING INFORMATION ARE AVAILABLE ON PAGES 51-57.



ARMOURFUSE LACROSSE

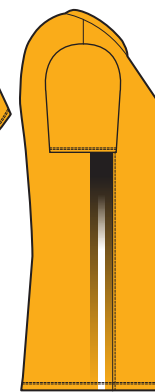
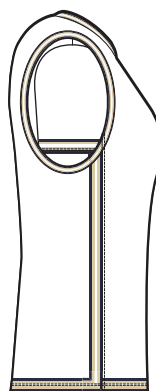
ARMOURFUSE GAMETIME JERSEYS

ADULT: XS-2XL, OVERSIZE 3XL

YOUTH: YSM-YLG

SHORTSLEEVE	SIZE	PRICE
UJLGIW (W)	XS-2XL	\$82.50
UJLGIG (G)	YSM-YLG	\$77.50
RACERBACK	SIZE	PRICE
UJLVGIW (W)	XS-2XL	\$77.50
UJLVGIG (G)	YSM-YLG	\$72.50

4-way stretch flat knit. Streamlined fit to reduce all around volume.



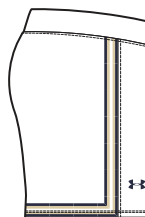
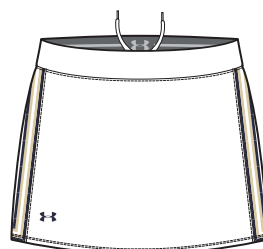
ARMOURFUSE GAMETIME KILT & 5" SHORT

ADULT: XS-2XL, OVERSIZE 3XL

YOUTH: YSM-YLG

KILT	SIZE	PRICE
UJLKGIW (W)	XS-2XL	\$77.50
UJLKGIG (G)	YSM-YLG	\$72.50
5" SHORT	SIZE	PRICE
UJLSGIW (W)	XS-2XL	\$77.50
UJLSGIG (G)	YSM-YLG	\$72.50

4-way stretch flat knit.



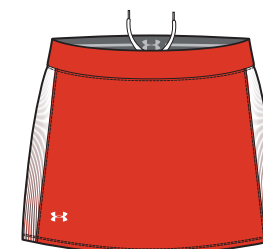
MICROSTRIPE

NEW DESIGN FIRST SHIP: 10/25/2025



MISSION

NEW DESIGN FIRST SHIP: 10/25/2025



PURSUIT

NEW DESIGN FIRST SHIP: 10/25/2025

GAMETIME STYLES CONTINUE ON FOLLOWING PAGE

OVERSIZED SURCHARGE +\$5 PER SIZE | EXTENDED/SHORTENED LENGTHS OFFERED, SEE PAGE 55 FOR MORE INFO | BASE UNIFORM APPROVED FOR HS PLAY



ARMOURFUSE® UNIFORMS | ORDERING INFORMATION AND CUSTOMER SERVICE: 1-888-871-0990 | www.underarmourteamuniforms.com | FILL-IN LIFECYCLE TIMING FOUND ON PAGE 57. DECORATION OPTIONS AND ORDERING INFORMATION ARE AVAILABLE ON PAGES 51-57.



ARMOURFUSE LACROSSE

GAMETIME STYLES CONTINUED FROM PREVIOUS PAGE

ARMOURFUSE GAMETIME JERSEYS

ADULT: XS-2XL, OVERSIZE 3XL

YOUTH: YSM-YLG

SHORTSLEEVE	SIZE	PRICE
UJLGIW (W)	XS-2XL	\$82.50
UJLGIG (G)	YSM-YLG	\$77.50
RACERBACK	SIZE	PRICE
UJLVGIW (W)	XS-2XL	\$77.50
UJLVGIG (G)	YSM-YLG	\$72.50

4-way stretch flat knit. Streamlined fit to reduce all around volume.

ARMOURFUSE GAMETIME KILT & 5" SHORT

ADULT: XS-2XL, OVERSIZE 3XL

YOUTH: YSM-YLG

KILT	SIZE	PRICE
UJLKGIW (W)	XS-2XL	\$77.50
UJLKGIG (G)	YSM-YLG	\$72.50
5" SHORT	SIZE	PRICE
UJLSGIW (W)	XS-2XL	\$77.50
UJLSGIG (G)	YSM-YLG	\$72.50

4-way stretch flat knit.



REIGN



TRIUMPH



CONQUER



ALPHA



OVERSIZED SURCHARGE +\$5 PER SIZE | EXTENDED/SHORTENED LENGTHS OFFERED, SEE PAGE 55 FOR MORE INFO | BASE UNIFORM APPROVED FOR HS PLAY

AF ARMOURFUSE® UNIFORMS | ORDERING INFORMATION AND CUSTOMER SERVICE: 1-888-871-0990 | www.underarmourteamuniforms.com | FILL-IN LIFECYCLE TIMING FOUND ON PAGE 57. DECORATION OPTIONS AND ORDERING INFORMATION ARE AVAILABLE ON PAGES 51-57.



ARMOURFUSE LACROSSE

1-PLY REVERSIBLE JERSEY

ADULT: XS-2XL, OVERSIZE 3XL

YOUTH: YSM-YXL

STYLE	SIZE	PRICE
UJLRH2W (W)	XS-2XL	\$88.00
UJLRH2G (G)	YSM-YLG	\$78.00

1-Ply reversible lightweight mock mesh. Smooth knit binding allows for reverse color contrast. Classic racer back design & scoop neck collar.

LAX PRACTICE SHORT

ADULT: XS-2XL, OVERSIZE 3XL

YOUTH: YSM-YXL

STYLE	SIZE	PRICE
UJLS2W (W)	XS-2XL	\$82.50
UJLS2G (G)	YSM-YLG	\$77.50

Shaped hem. 3" side panel for sublimation designs. 5" inseam.

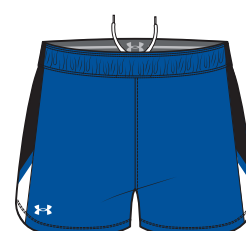


PRINTED

NEW DESIGN FIRST SHIP: 10/25/2025

SHOWN WITH
LAX PRACTICE SHORT

FLASH

SHOWN WITH
LAX PRACTICE SHORT

BLAST

SHOWN WITH
LAX PRACTICE SHORT

LASER

SHOWN WITH
LAX PRACTICE SHORT

REVERSIBLE STYLES CONTINUE ON FOLLOWING PAGE

OVERSIZED SURCHARGE +\$5 PER SIZE | EXTENDED/SHORTENED LENGTHS OFFERED, SEE PAGE 55 FOR MORE INFO | BASE UNIFORM APPROVED FOR HS PLAY



ARMOURFUSE LACROSSE

REVERSIBLE STYLES CONTINUED FROM PREVIOUS PAGE

1-PLY REVERSIBLE JERSEY

ADULT: XS-2XL, OVERSIZE 3XL

YOUTH: YSM-YXL

STYLE	SIZE	PRICE
UJLRH2W (W)	XS-2XL	\$88.00
UJLRH2G (G)	YSM-YLG	\$78.00

1-Ply reversible lightweight mock mesh. Smooth knit binding allows for reverse color contrast. Classic racer back design & scoop neck collar.

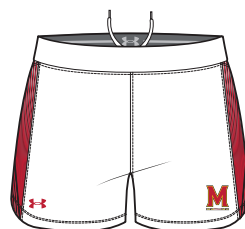
LAX PRACTICE SHORT

ADULT: XS-2XL, OVERSIZE 3XL

YOUTH: YSM-YXL

STYLE	SIZE	PRICE
UJLS2W (W)	XS-2XL	\$82.50
UJLS2G (G)	YSM-YLG	\$77.50

Shaped hem. 3" side panel for sublimation designs. 5" inseam.



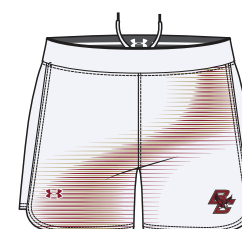
THE BUNDLE
SHOWN WITH
LAX PRACTICE SHORT



ABSTRACT ANIMAL
SHOWN WITH
SHOWTIME 5" SHORT



UA WHIP
SHOWN WITH
SHOWTIME 5" SHORT



BEHIND THE BACK
SHOWN WITH
SHOWTIME 5" SHORT

OVERSIZED SURCHARGE +\$5 PER SIZE | EXTENDED/SHORTENED LENGTHS OFFERED, SEE PAGE 55 FOR MORE INFO | BASE UNIFORM APPROVED FOR HS PLAY

AF ARMOURFUSE® UNIFORMS | ORDERING INFORMATION AND CUSTOMER SERVICE: 1-888-871-0990 | www.underarmourteamuniforms.com | FILL-IN LIFECYCLE TIMING FOUND ON PAGE 57. DECORATION OPTIONS AND ORDERING INFORMATION ARE AVAILABLE ON PAGES 51-57.



ARMOURFUSE LACROSSE

CLUB JERSEY

ADULT: XS-2XL, OVERSIZE 3XL

YOUTH: YSM-YXL

STYLE	SIZE	PRICE
UJLCBW (W)	XS-2XL	\$93.00
UJLCBG (G)	YSM-YLG	\$82.50

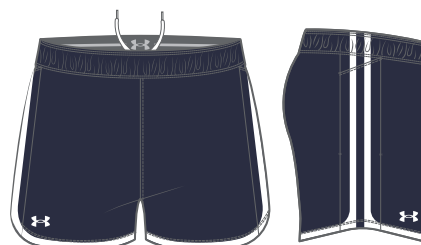
Lax-specific neckline & collar construction.
Porthole Mesh at shoulders and back yoke for vintage look and feel while providing breathability.
Tank look with looser body for added mobility.
Sublimated main body to drop in loud prints.

LAX PRACTICE SHORT POCKETS

ADULT: XS-2XL, OVERSIZE 3XL

STYLE	SIZE	PRICE
UJLS2PW (W)	XS-2XL	\$88.00

Shaped hem. 3" side panel for sublimation designs. 5" inseam.



SURGE



STREAK



LASER

OVERSIZED SURCHARGE +\$5 PER SIZE | EXTENDED/SHORTENED LENGTHS OFFERED, SEE PAGE 55 FOR MORE INFO | BASE UNIFORM APPROVED FOR HS PLAY



STOCK LACROSSE

Unique designs and advanced technology in stock. Pre-set designs, ready to ship. Best-in-class stock fabrications for all levels of play.



PACKAGE DECORATION

	1COLOR	2COLOR
--	--------	--------

SCREENPRINT	\$17.50	\$27.50
--------------------	----------------	----------------

Team Name, Front/Back Numbers

TACKLE TWILL	\$49.00	\$59.00
---------------------	----------------	----------------

Team Name, Front/Back Numbers

Additional Stock Options on page 54.





STOCK LACROSSE

FORCE SHORT SLEEVE

ADULT: XXS-2XL

STYLE	SIZE	PACKAGE*	PRICE
ULJ154W (W)	XXS-2XL	BLANK	\$50.00
		1-COLOR SCREEN	\$67.50
		2-COLOR SCREEN	\$77.50

Breathable allover jacquard mesh. Color pop at collar and upper back.

* PACKAGE INCLUDES TEAM NAME/LOGO + FRONT & BACK PLAYER NUMBERS



BK/WH

WH/BK

GP/WH

NA/WH

SC/WH

RO/WH

DG/WH

MA/WH

PU/WH

CA/WH

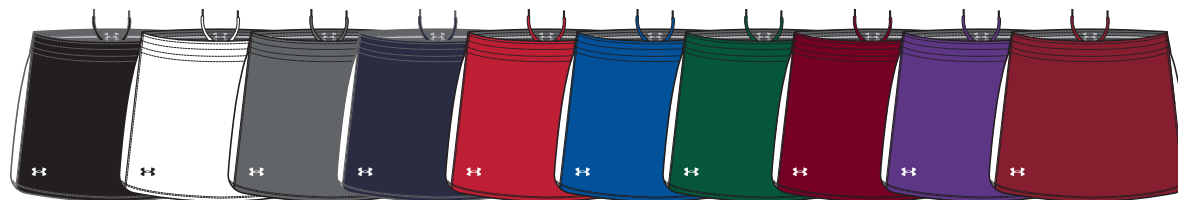
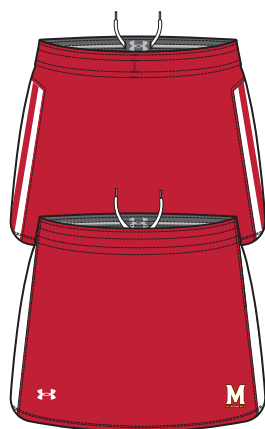
FORCE KILT

ADULT: XXS-2XL

STYLE	SIZE	PACKAGE*	PRICE
ULK554W (W)	XXS-2XL	BLANK	\$40.50
		1-COLOR SCREEN	\$46.00
		2-COLOR SCREEN	\$51.00

Breathable allover jacquard mesh. Solid body with contrast color side inserts. Internal exposed elastic with UA wordmark detail.

*PACKAGE INCLUDES TEAM NAME/LOGO



BK/WH

WH/BK

GP/WH

NA/WH

SC/WH

RO/WH

DG/WH

MA/WH

PU/WH

CA/WH



STOCK LACROSSE

FORCE RACERBACK

ADULT: XXS-2XL

STYLE	SIZE	PACKAGE*	PRICE
ULV154W (W)	XXS-2XL	BLANK	\$45.50
		1-COLOR SCREEN	\$63.00
		2-COLOR SCREEN	\$73.00

Breathable allover jacquard mesh. Color pop at collar and upper back.

* PACKAGE INCLUDES TEAM NAME/LOGO + FRONT & BACK PLAYER NUMBERS



BK/WH

WH/BK

GP/WH

NA/WH

SC/WH

RO/WH

DG/WH

MA/WH

PU/WH

CA/WH

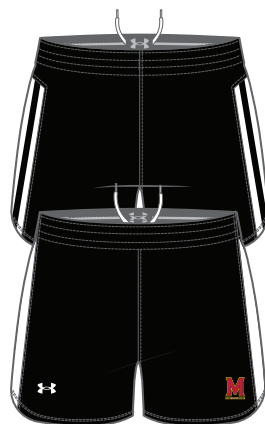
FORCE SHORT

ADULT: XXS-2XL

STYLE	SIZE	PACKAGE*	PRICE
ULS554W (W)	XXS-2XL	BLANK	\$40.50
		1-COLOR SCREEN	\$46.00
		2-COLOR SCREEN	\$51.00

Breathable allover jacquard mesh. Solid body with contrast color side inserts. Internal exposed elastic with UA wordmark detail. 5" inseam.

*PACKAGE INCLUDES TEAM NAME/LOGO



BK/WH

WH/BK

GP/WH

NA/WH

SC/WH

RO/WH

DG/WH

MA/WH

PU/WH

CA/WH



GILMAN COLORBLOCK PINNIE

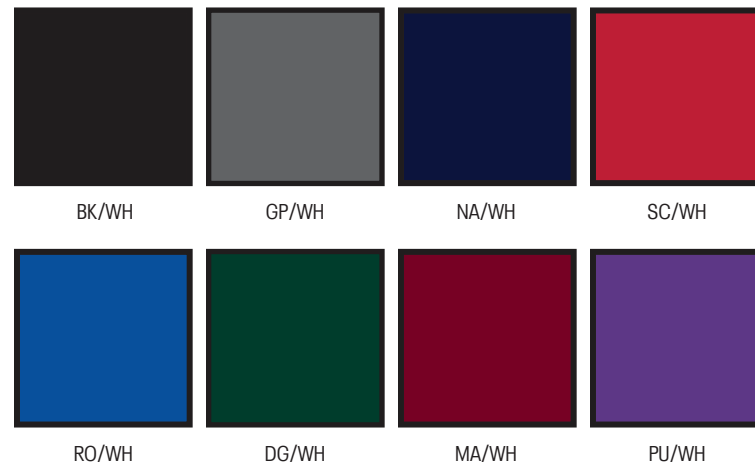
ADULT: XS-2XL

YOUTH: YSM-YXL

STYLE	SIZE	PACKAGE*	PRICE
ULJ195W (W)	XS-2XL	BLANK	\$20.00
		1-COLOR SCREEN	\$55.00
		2-COLOR SCREEN	\$75.00
ULJ195Y (Y)	YSM-YXL	BLANK	\$19.00

Warp-knit tricot mesh in pinnie style.
Waist length lacrosse cut bottom hem.

*PACKAGE INCLUDES TEAM NAME/LOGO + FRONT
& BACK PLAYER NUMBERS ON BOTH SIDES



STOCK LACROSSE

GILMAN PINNIE REVERSIBLE

ADULT: XS-2XL

YOUTH: YSM-YXL

STYLE	SIZE	PACKAGE*	PRICE
ULJ190W (W)	XS-2XL	BLANK	\$16.00
		1-COLOR SCREEN	\$51.00
		2-COLOR SCREEN	\$71.00
ULJ190Y (Y)	YSM-YXL	BLANK	\$13.50

Warp-knit tricot mesh in racerback pinnie style.
Waist length lacrosse cut bottom hem.

*PACKAGE INCLUDES TEAM NAME/LOGO + FRONT
& BACK PLAYER NUMBERS ON BOTH SIDES



BK/WH GP/WH NA/WH SC/WH RO/WH DG/WH MA/WH PU/WH OR/WH

TRIPLE DOUBLE SHORT

ADULT: SM-2XL, OVERSIZE 3XL

YOUTH: YSM-YXL

STYLE	SIZE	PACKAGE*	PRICE
UKS590W (W)	SM-2XL	BLANK	\$19.00
		1-COLOR SCREEN	\$24.50
		2-COLOR SCREEN	\$29.50
UKS590Y (Y)	YSM-YXL	BLANK	\$16.50

100% ventilated tricot mesh polyester with internal liner. 8" inseam for women's and youth.

*PACKAGE INCLUDES TEAM LOGO ONLY (PER LOCATION)



BK/WH GP/WH NA/WH SC/WH RO/WH DG/WH MA/WH PU/WH CB/WH OR/WH CA/WH



OVERSIZED SURCHARGE +\$5 PER SIZE

**NEW****6010187
UA HIGHLIGHT PRO LAX****\$140.00****SIZES:** UNISEX 4-14, 15, 16**SHIP:** 12/1/2025 | LAST SHIP: 5/31/2026

UA IntelliKnit upper is breathable & provides premium stretch & compression where you need it. TPU skin provides minimalistic structure & protection where you need it. Easy on/off compression collar for a sock-like fit & feel that moves with you. Updated sockliner for improved underfoot comfort. Lightweight TPU plate provides traction for the fastest on the field & grip for elite cuts & breaks.

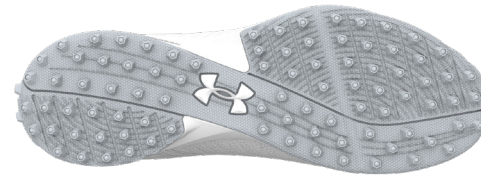
LIMITED EDITION: 6005974 | \$150.00**100**
WHT/WHT/MSV**100**
WHT/WHT/WHT
(LE)

**NEW****6006431****UA BLUR PRO LAX****\$110.00****SIZES:** UNISEX 4-14, 15, 16**SHIP:** 12/1/2025 | LAST SHIP: 5/31/2026

Cushy energy returning UA HOVR™ technology in our drop in midsole that is 3X thicker than a regular sock liner, makes for our most comfortable cleat yet. Ultra lightweight design built with an IntelliKnit upper for a breathable, next to skin fit with maximum flexibility. V-pattern spikes are specifically placed based on data from the best players in the game so you can dig in with every sharp cut.

LIMITED EDITION: 6006433 | \$120.00100
WHT/WHT/MSV100
WHT/WHT/WHT
(LE)**NEW****6006432****UA BLUR PRO LAX TURF****\$100.00****SIZES:** UNISEX 4-14, 15, 16**SHIP:** 12/1/2025 | LAST SHIP: 5/31/2026

UA IntelliKnit upper is breathable & provides premium stretch & compression where you need it. TPU skin provides minimalistic structure & protection where you need it. Rubber outsole with mini-lugs for incredible grip & traction on artificial turf & dry natural fields.

100
WHT/WHT/MSV



1386311 CREW 3-PACK UNISEX

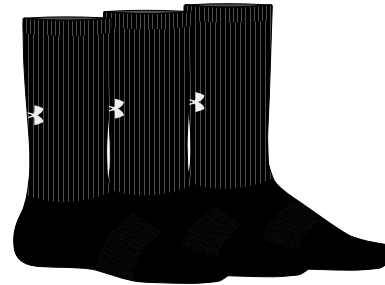
\$16.00 | THREE PAIR

SIZES: MD (YOUTH 4.5-7 / MEN'S 7-8.5 / WOMEN'S 6-10)
LG (MEN'S 8.5-13 / WOMEN'S 10-14)
XL (MEN'S 13-16)

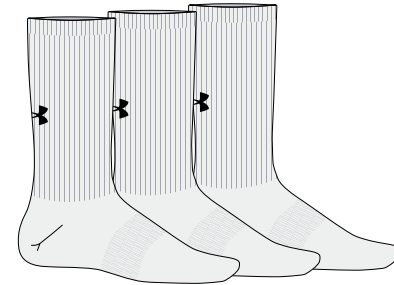
FABRIC: 64% COTTON, 31% POLYESTER, 5% ELASTANE

SHIP: C/O

Lightweight, soft cotton-blend fabric for all-day comfort. Material wicks sweat & dries really fast. Locked-in fit design keeps sock securely on heel for an adjustment free fit that won't fall down. Medium cushioning placed strategically throughout foot protects high-impact areas without added bulk. Mesh panels on top of foot for added breathability. Built-in arch support helps reduce foot fatigue.



001
BLK/BLK/WHT



100
WHT/WHT/BLK

1386251 UA TEAM CREW UNISEX

\$14.00 | SINGLE PAIR

SIZES: SM (YOUTH 13.5K-4.5 / WOMEN'S 4-6)
MD (YOUTH 4.5-7 / MEN'S 7-8.5 / WOMEN'S 6-10)
LG (MEN'S 8.5-13 / WOMEN'S 10-14)
XL (MEN'S 13-16)

FABRIC: 95% POLYESTER, 5% ELASTANE

SHIP: C/O

Medium cushioning throughout foot for comfort & protection. Mesh panels on top of foot for added breathability. Durable material wicks sweat & dries really fast. Anti-odor technology helps prevent odor in the sock. Embedded arch support helps reduce foot fatigue. Fitted heel contours around your foot for a better fit. Left/Right specific fit.

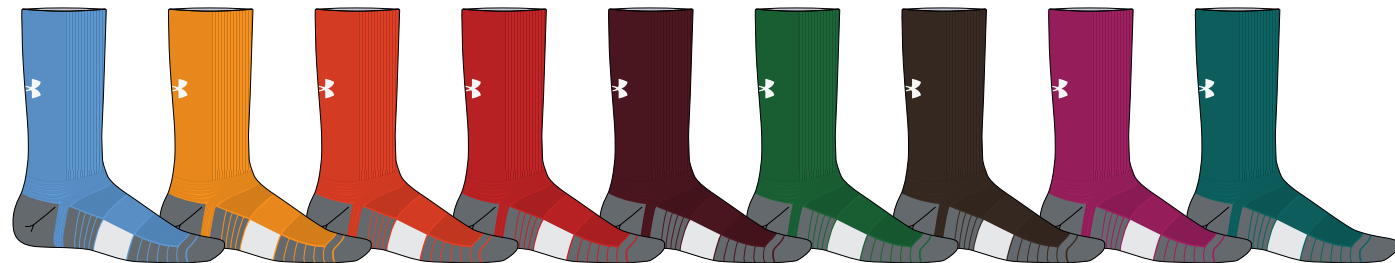
YOUTH: 1386252 | \$12.00

SIZES: XS (10.5K-13K), SM (YOUTH 13.5K-4.5), MD (YOUTH 4.5-7)

Y = YOUTH OFFERING



001 Y BLK/PITCH/WHT 040 GPH/PITCH/WHT 100 Y WHT/PITCH/BLK 410 Y MDN/PITCH/WHT 600 Y RED/PITCH/WHT 400 Y RYL/PITCH/WHT 301 GRN/PITCH/WHT 609 MAR/PITCH/WHT 500 PUR/PITCH/WHT



465 HORBLUE/PITCH/WHT 750 SGD/PITCH/WHT 800 TOG/PITCH/WHT 860 DKO/PITCH/WHT 625 CRD/PITCH/WHT 305 TKG/PITCH/WHT 230 GRIDIRON/PITCH/WHT 654 TPK/PITCH/WHT 722 CTL/PITCH/WHT



1350098 UA LACROSSE BACKPACK

\$70.00 | **STORM**

SIZES: 7.1" X 20.7" X 12.6" | CUB. VOL. 37.7 L

FABRIC: 91% POLYESTER, 9% NYLON

SHIP: C/O

UA Storm technology delivers an element-battling, highly water-resistant finish. Foam padded back panel for enhanced comfort & breathability. Soft tricot-lined front valuables pocket. Side ball pocket fits 2 lacrosse balls. ArmourVent™ shoe compartment on front is embroidery compatible for customization. Second bag strap clip for multiple ways to carry. Secure stick holder. D-ring on front for helmet attachment point. Top grab handle. Side water bottle pocket.



002
BLK/WHT

1352119 UA LACROSSE EQUIPMENT BAG

\$80.00

SIZES: 42" X 12" X 12"

FABRIC: 100% POLYESTER

SHIP: C/O

Large main compartment with ArmourVent® top panel for added ventilation for equipment. Separate shoe compartment with zip closure. Exterior stick sleeve for easy access storage. Adjustable, padded shoulder strap & top grab handles for easy carry.



001
BLK/WHT

**1346372**
GAMEDAY ARMOUR® PRO MOUTHGUARD**\$22.00****SIZES:** OSFM**SHIP:** C/O**SHOCK DOCTOR TECHNOLOGIES**

Multi-Layer Design — Protection and comfort in a low-profile structure. Gel Fit Liner — Molds to teeth for comfortable, custom-like fit. Integrated Jaw Pads — Offer added protection and support at impact. Convertible Strap — Wear it strapped or strapless. Boil and Bite — For custom-like fit. Meets national and state high school rules.

**001**
BLK**600**
RED**400**
RYL**900**
TRANS/CBL**YOUTH: 1346373 | \$22.00 | OSFM**



ARMOURFUSE TRAINING

Brilliant, vibrant team colors permanently fused directly into textiles. Limitless customization, all-inclusive pricing with exclusive UA designs and customized prints. 41 different colors and 18 prints available. 6 piece minimum order.





ARMOURFUSE TRAINING

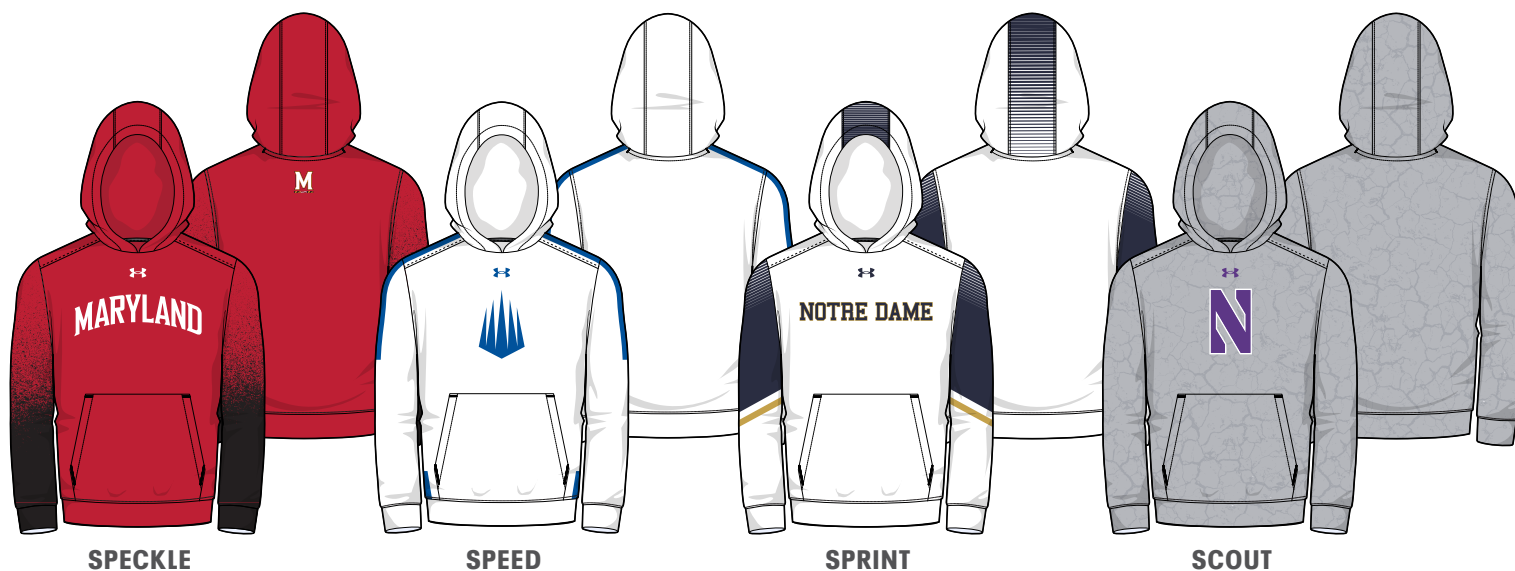
ARMOURFUSE TRAINING HOODY

ADULT: XS-2XL, OVERSIZE 3XL-4XL

YOUTH: YSM-YXL

STYLE	SIZE	PRICE
UJGJFHM (M)	XS-2XL	\$124.00
UJGJFHY (Y)	YSM-YXL	\$114.00

8.26 oz. Fleece with stretch lined
3-panel hood.

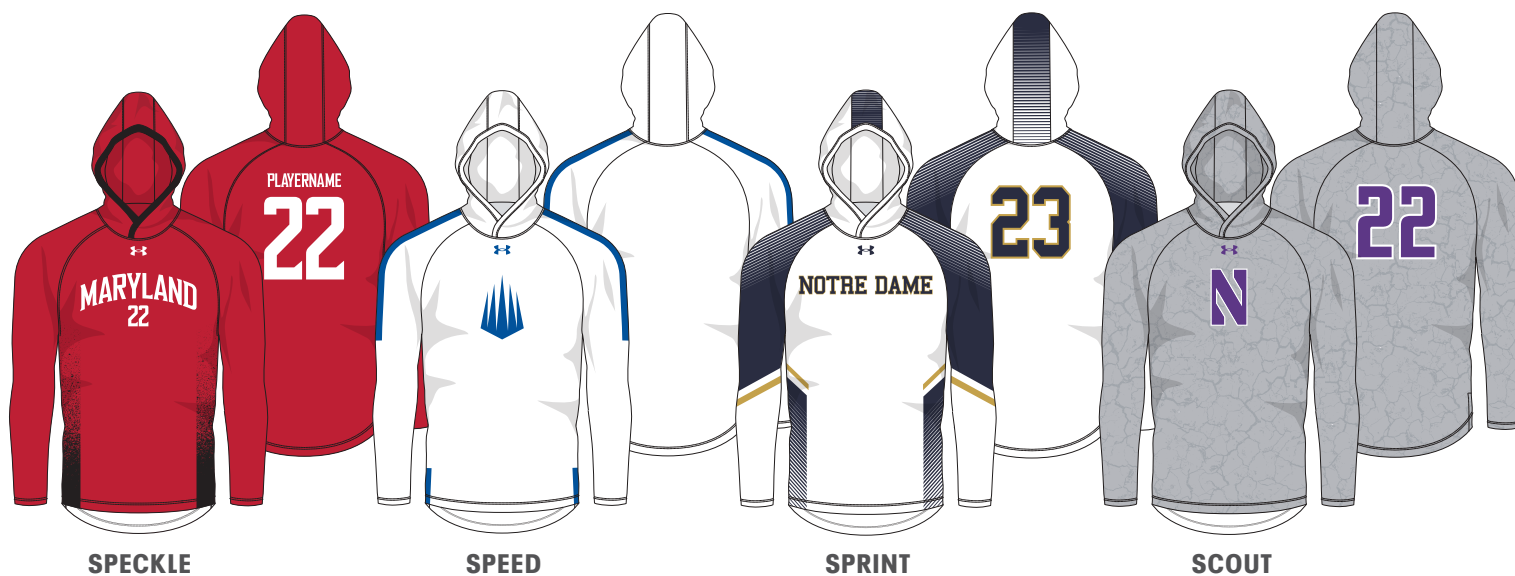
ARMOURFUSE LONG SLEEVE
HOODED SHOOTER

ADULT: XS-2XL, OVERSIZE 3XL-4XL

YOUTH: YSM-YXL

STYLE	SIZE	PRICE
UJGTHDM (M)	SM-2XL	\$119.00
UJGTHDY (Y)	YSM-YXL	\$114.00

New lightweight 4.8 oz. fabric with
increased stretch for ultimate comfort.



OVERSIZED SURCHARGE +\$5 PER SIZE | ADDITIONAL LENGTH OPTIONS FOUND ON PAGE 55





ARMOURFUSE TRAINING

ARMOURFUSE SHORT SLEEVE
HOODED SHOOTER

ADULT: XS-2XL, OVERSIZE 3XL-4XL

YOUTH: YSM-YXL

STYLE	SIZE	PRICE
UJGTSSM (M)	XS-2XL	\$114.00
UJGTSSY (Y)	YSM-YXL	\$109.00

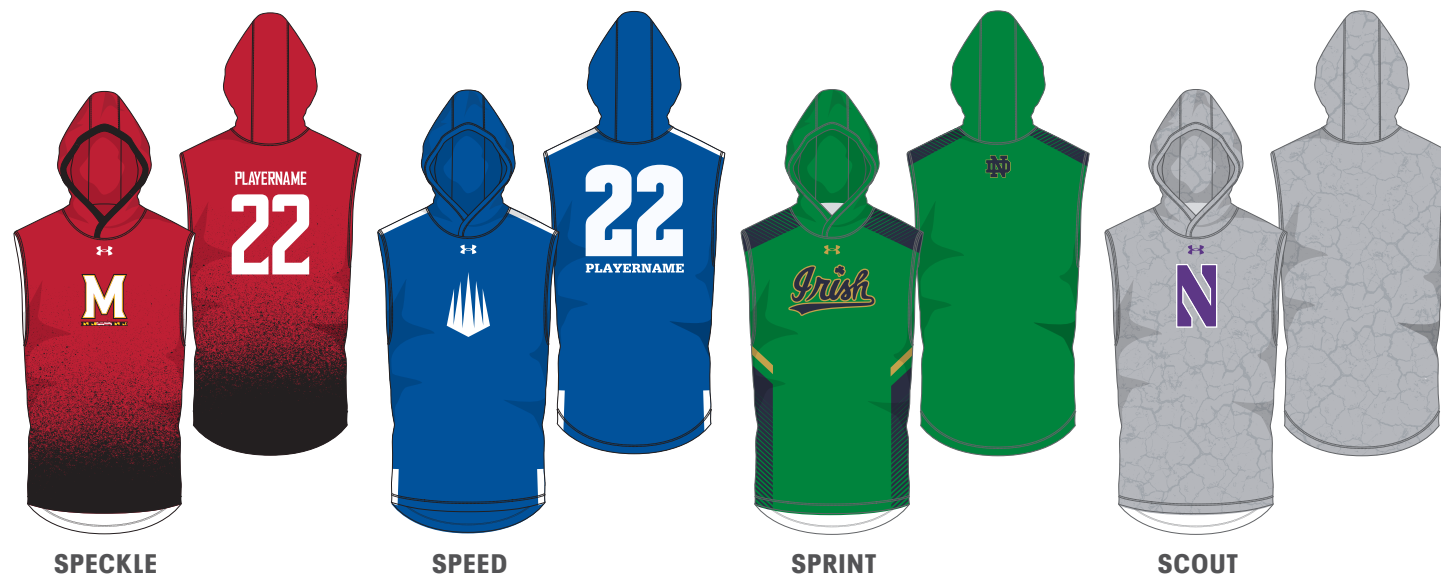
New lightweight 4.8 oz. fabric with increased stretch for ultimate comfort.

ARMOURFUSE SLEEVELESS
HOODED SHOOTER

ADULT: XS-2XL, OVERSIZE 3XL-4XL

STYLE	SIZE	PRICE
UJGTHVM (M)	XS-2XL	\$94.00

New lightweight 4.8 oz. fabric with increased stretch for ultimate comfort.



OVERSIZED SURCHARGE +\$5 PER SIZE | ADDITIONAL LENGTH OPTIONS FOUND ON PAGE 55

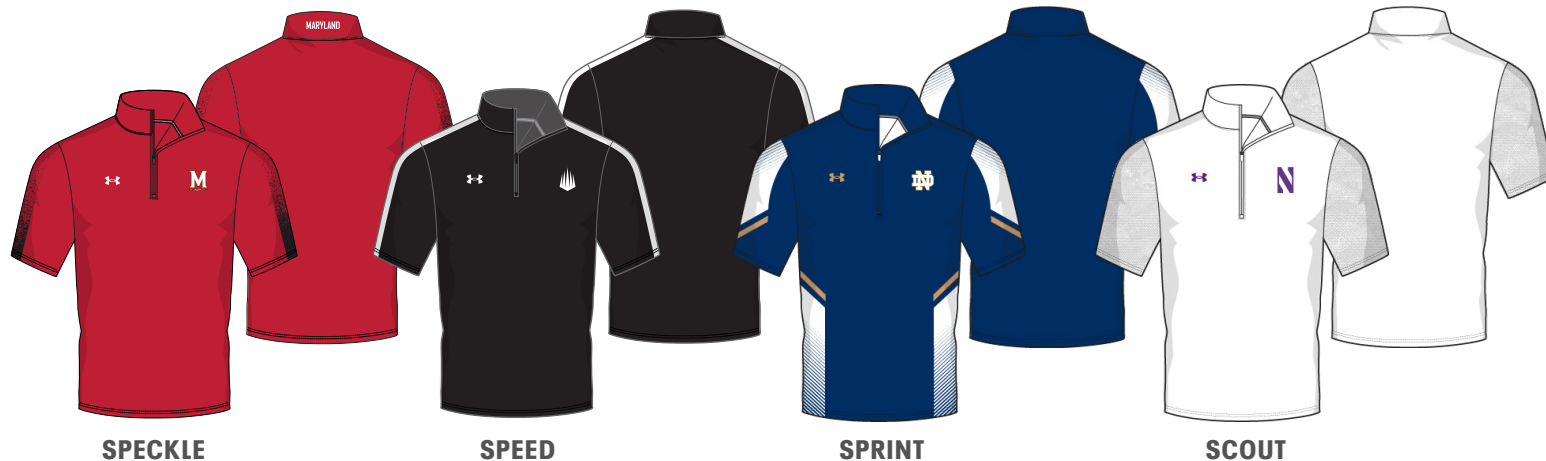


ARMOURFUSE TRAINING

**ARMOURFUSE
SHORT SLEEVE ¼ ZIP****ADULT:** XS-2XL, OVERSIZE 3XL-4XL

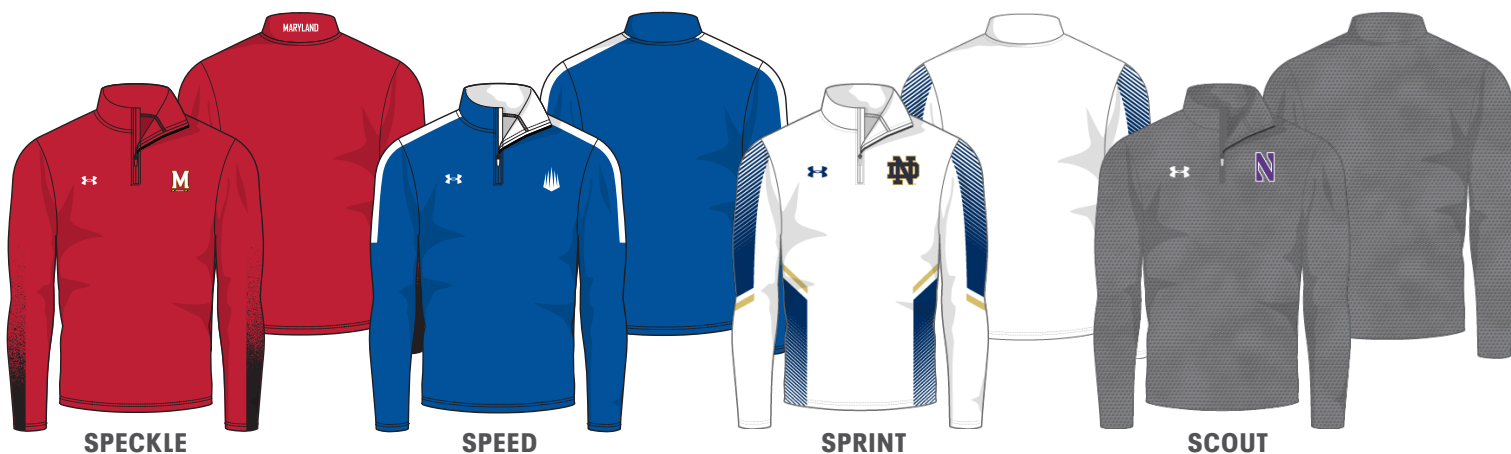
STYLE	SIZE	PRICE
WJGQZVM (M)	XS-2XL	\$120.00

New lightweight 4.8 oz. fabric with increased stretch for ultimate comfort.

**ARMOURFUSE
LONG SLEEVE ¼ ZIP****ADULT:** XS-2XL, OVERSIZE 3XL-4XL

STYLE	SIZE	PRICE
WJGQZLM (M)	XS-2XL	\$130.00

New lightweight 4.8 oz. fabric with increased stretch for ultimate comfort.



OVERSIZED SURCHARGE +\$5 PER SIZE | ADDITIONAL LENGTH OPTIONS FOUND ON PAGE 55



ARMOURFUSE TRAINING

ARMOURFUSE LONG SLEEVE TEE

ADULT: XS-2XL, OVERSIZE 3XL-4XL

YOUTH: YSM-YXL

STYLE	SIZE	PRICE
UJGJL2M (M)	XS-2XL	\$90.00
UJGJL2Y (Y)	YSM-YXL	\$86.00

New lightweight 4.8 oz. fabric with increased stretch for ultimate comfort.



ARMOURFUSE SHORT SLEEVE TEE

ADULT: XS-2XL, OVERSIZE 3XL-4XL

YOUTH: YSM-YXL

LOOSE S S T	SIZE	PRICE
UJGIS2M (M)	XS-2XL	\$75.00
UJGIS2Y (Y)	YSM-YXL	\$71.00

New lightweight 4.8 oz. fabric with increased stretch for ultimate comfort.



OVERSIZED SURCHARGE +\$5 PER SIZE | ADDITIONAL LENGTH OPTIONS FOUND ON PAGE 55



ARMOURFUSE TRAINING SHORTS

ADULT: XS-2XL, OVERSIZE 3XL-5XL

YOUTH: YSM-YXL

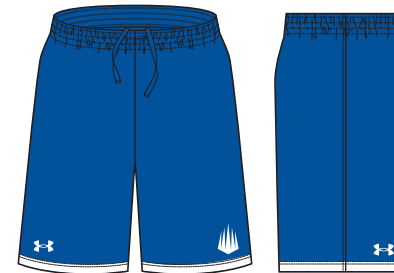
POCKETED SHORT	SIZE	PRICE
UJGS3PM (M)	XS-2XL	\$75.00
UJGS3PY (Y)	YSM-YXL	\$70.00

NON-POCKETED SHORT	SIZE	PRICE
UJGS3M (M)	XS-2XL	\$70.00
UJGS3Y (Y)	YSM-YXL	\$65.00

7" INSEAM FOR POCKETED AND NON-POCKETED SHORT



SPECKLE



SPEED



SPRINT



SCOUT

OVERSIZED SURCHARGE +\$5 PER SIZE | ADDITIONAL LENGTH OPTIONS FOUND ON PAGE 55



ARMOURFUSE TRAINING

ARMOURFUSE TRAINING
COMPRESSION TANK

ADULT: XS-2XL, OVERSIZE 3XL-4XL

STYLE	SIZE	PRICE
UJGJCTM (M)	XS-2XL	\$65.00

ARMOURFUSE TRAINING
COMPRESSION SLEEVELESS

ADULT: XS-2XL, OVERSIZE 3XL-4XL

STYLE	SIZE	PRICE
UJGJCM (M)	XS-2XL	\$65.00



OVERSIZED SURCHARGE +\$5 PER SIZE | ADDITIONAL LENGTH OPTIONS FOUND ON PAGE 55



ARMOURFUSE TRAINING

ARMOURFUSE TRAINING
COMPRESSION SLEEVELESS MOCK

ADULT: XS-2XL, OVERSIZE 3XL-4XL

STYLE	SIZE	PRICE
UJGJCM (M)	XS-2XL	\$70.00

ARMOURFUSE TRAINING
COMPRESSION SHORT SLEEVE

ADULT: XS-2XL, OVERSIZE 3XL-4XL

STYLE	SIZE	PRICE
UJGJCS (M)	XS-2XL	\$65.00



OVERSIZED SURCHARGE +\$5 PER SIZE | ADDITIONAL LENGTH OPTIONS FOUND ON PAGE 55



ARMOURFUSE TRAINING

ARMOURFUSE TRAINING COMPRESSION HALF SLEEVE

ADULT: XS-2XL, OVERSIZE 3XL-4XL

STYLE	SIZE	PRICE
UJGJHSM (M)	XS-2XL	\$70.00



ARMOURFUSE TRAINING COMPRESSION LONG SLEEVE

ADULT: XS-2XL, OVERSIZE 3XL-4XL

STYLE	SIZE	PRICE
UJGJCLM (M)	XS-2XL	\$75.00



OVERSIZED SURCHARGE +\$5 PER SIZE | ADDITIONAL LENGTH OPTIONS FOUND ON PAGE 55



ARMOURFUSE TRAINING

Brilliant, vibrant team colors permanently fused directly into textiles. Limitless customization, all-inclusive pricing with exclusive UA designs and customized prints. 41 different colors and 18 prints available. 6 piece minimum order.



ARMOURFUSE TRAINING

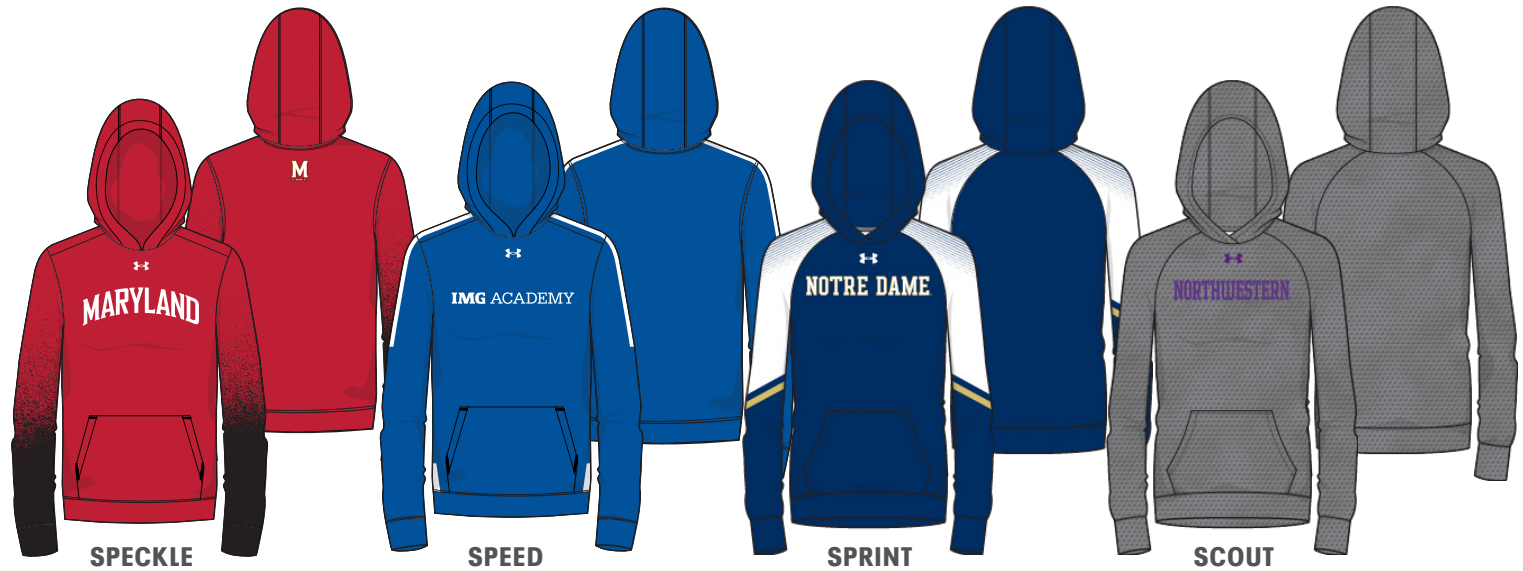
ARMOURFUSE TRAINING HOODY

ADULT: XS-2XL, OVERSIZE 3XL

YOUTH: YSM-YXL

STYLE	SIZE	PRICE
UJGFHW (W)	XS-2XL	\$124.00
UJGFHY (Y)	YSM-YXL	\$114.00

8.26 oz. Fleece with stretch lined
3-panel hood.



**ARMOURFUSE SHORT SLEEVE
HOODED SHOOTER**

ADULT: XS-2XL, OVERSIZE 3XL

YOUTH: YSM-YXL

STYLE	SIZE	PRICE
UJGTSSW (W)	XS-2XL	\$114.00
UJGTSSY (Y)	YSM-YXL	\$109.00

New lightweight 4.8 oz. fabric with
increased stretch for ultimate comfort.



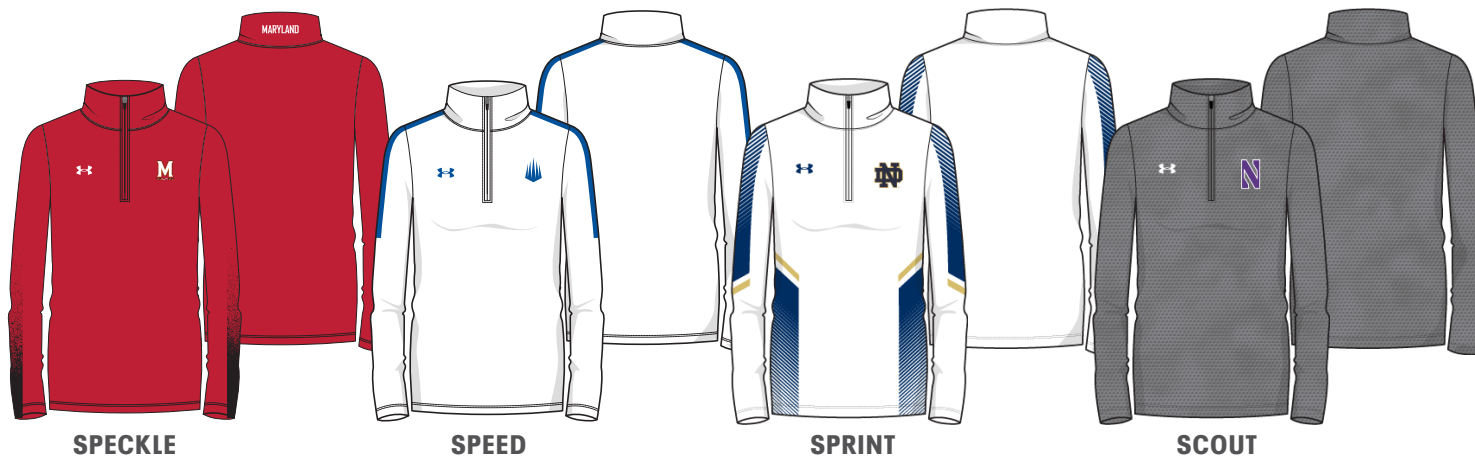
OVERSIZED SURCHARGE +\$5 PER SIZE | ADDITIONAL LENGTH OPTIONS FOUND ON PAGE 55

ARMOURFUSE LONG SLEEVE ¼ ZIP

ADULT: XS-2XL, OVERSIZE 3XL

STYLE	SIZE	PRICE
UJGHZLW (W)	XS-2XL	\$130.00

New lightweight 4.8 oz. fabric with increased stretch for ultimate comfort.



ARMOURFUSE TRAINING SHORTS

ADULT: XS-2XL, OVERSIZE 3XL

YOUTH: YSM-YXL

POCKETED SHORT	SIZE	PRICE
UJGS3PW (W)	XS-2XL	\$75.00
UJGS3PY (Y)	YSM-YXL	\$70.00

NON-POCKETED SHORT	SIZE	PRICE
UJGS3W (W)	XS-2XL	\$70.00
UJGS3Y (Y)	YSM-YXL	\$65.00

HEADBAND	SIZE	PRICE
UJLHBW1 (W)	OSFA	\$34.00

5" INSEAM FOR POCKETED AND NON-POCKETED SHORT



OVERSIZED SURCHARGE +\$5 PER SIZE | ADDITIONAL LENGTH OPTIONS FOUND ON PAGE 55

ARMOURFUSE TRAINING

**ARMOURFUSE
LONG SLEEVE TEE**

ADULT: XS-2XL, OVERSIZE 3XL

YOUTH: YSM-YXL

STYLE	SIZE	PRICE
UJGJL2W (W)	XS-2XL	\$90.00
UJGJL2Y (Y)	YSM-YXL	\$86.00

New lightweight 4.8 oz. fabric with increased stretch for ultimate comfort.



**ARMOURFUSE
SHORT SLEEVE TEE**

ADULT: XS-2XL, OVERSIZE 3XL

YOUTH: YSM-YXL

LOOSE SS T	SIZE	PRICE
UJGIS2W (W)	XS-2XL	\$75.00
UJGIS2Y (Y)	YSM-YXL	\$71.00

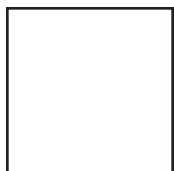
New lightweight 4.8 oz. fabric with increased stretch for ultimate comfort.



OVERSIZED SURCHARGE +\$5 PER SIZE | ADDITIONAL LENGTH OPTIONS FOUND ON PAGE 55



ARMOUR *FUSE*



WHITE



BLACK



PITCH GRAY



GRAPHITE



BASEBALL GRAY



SILVER GRAY



OCEAN STORM



MIDNIGHT NAVY



ROYAL



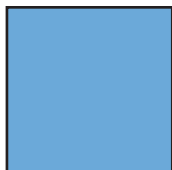
POWDERKEG BLUE



ELECTRIC BLUE



CAPRI



CAROLINA BLUE



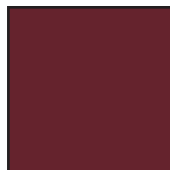
COASTAL TEAL



PURPLE



MAROON



CARDINAL



CRIMSON



UNIVERSITY RED



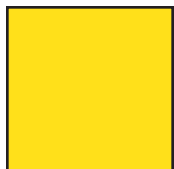
TROPIC PINK



PINK



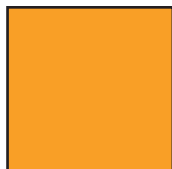
VINTAGE WHITE



TAXI



CAMPUS GOLD



TENNESSEE ORANGE



DARK ORANGE



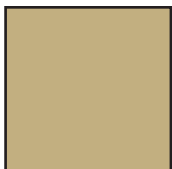
TEXAS ORANGE



CLEVELAND BROWN



GOLD RUSH



TEAM VEGAS GOLD



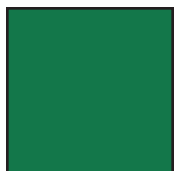
GRAYSTONE



MILITARY GREEN



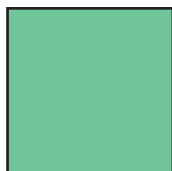
FOREST GREEN



TEAM KELLY GREEN



MIAMI TEAL

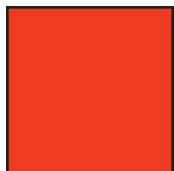


SEA GLASS



POISON

FLUORESCENTS (NOT CURRENTLY AVAILABLE IN TONAL PRINTS OR ON GAMEDAY PRODUCT)



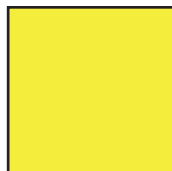
ORANGE FLUORESCENT



PINK FLUORESCENT



GREEN FLUORESCENT



YELLOW FLUORESCENT

**ARMOUR FUSE**

Prints available in all ArmourFuse colors. (Fluorescents not currently available in tonal prints)



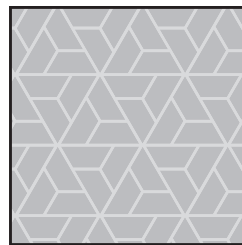
WOODLAND CAMO



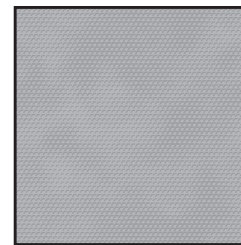
BENGAL



BLUR



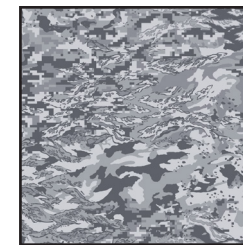
RAZOR



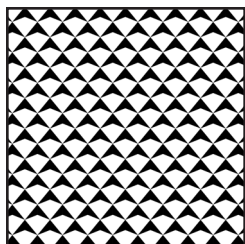
SCALE



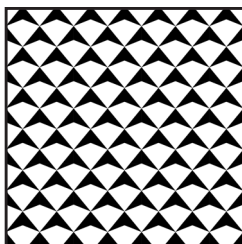
SPLINTER



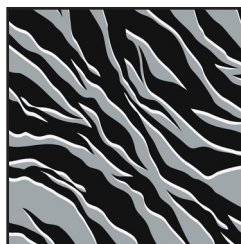
ABC CAMO



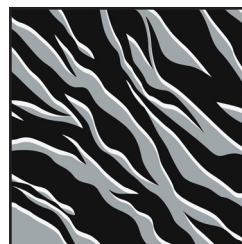
SHIELD MICRO



SHIELD MID



TIGER MICRO



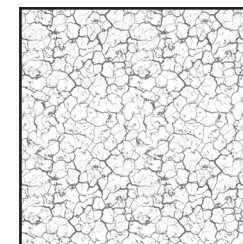
TIGER MACRO



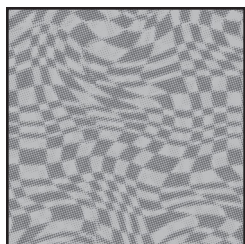
ZEBRA MICRO



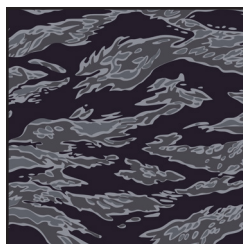
ZEBRA MACRO



CRACKLE



HAFTONE CHECKER



TIGER CAMO



FLORAL
(Not available on Gameday)



**DESERT
WOODLAND CAMO**
(Locked color combinations,
cannot be altered)



FONT OPTIONS

ATHLETIC SCRIPT

ABCDEFGHIJKLMNOPQRSTUVWXYZ
abcdefghijklmnopqrstuvwxyz

BADGER

ABCDEFGHIJKLMNOPQRSTUVWXYZ
0123456789

BEAR

ABCDEFGHIJKLMNOPQRSTUVWXYZ
0123456789

CADET

ABCDEFGHIJKLMNOPQRSTUVWXYZ
0123456789

FULL BLOCK

ABCDEFGHIJKLMNOPQRSTUVWXYZ
0123456789

MODERN

ABCDEFGHIJKLMNOPQRSTUVWXYZ
0123456789

PREMIER

ABCDEFGHIJKLMNOPQRSTUVWXYZ
0123456789

SWINGMAN

ABCDEFGHIJKLMNOPQRSTUVWXYZ
abcdefghijklmnopqrstuvwxyz

NOTE:

Gameday Select Package Pricing now includes all of the above listed fonts.
Dropped fonts available for fill-in orders only.

TERRAFONT

ABCDEFGHIJKLMNOPQRSTUVWXYZ
0123456789

TUSCAN

ABCDEFGHIJKLMNOPQRSTUVWXYZ
0123456789

UA COLLEGIATE SANS

ABCDEFGHIJKLMNOPQRSTUVWXYZ
0123456789

UA COLLEGIATE SANS CONDENSED

ABCDEFGHIJKLMNOPQRSTUVWXYZ
0123456789

UA COLLEGIATE SERIF

ABCDEFGHIJKLMNOPQRSTUVWXYZ
0123456789

UA COLLEGIATE SERIF CONDENSED

ABCDEFGHIJKLMNOPQRSTUVWXYZ
0123456789

UNDENIABLE

ABCDEFGHIJKLMNOPQRSTUVWXYZ
0123456789

LETTERING ARRANGEMENTS

STRAIGHT

TEAMNAME

BRIDGED

TEAMNAME

SCRIPT WITH TAIL

Teamname

ARCH

TEAMNAME

VERTICAL ARCH

TEAMNAME

STOCK DECORATION OPTIONS

SCREEN PRINT	ONE COLOR	TWO COLORS
Team Name	\$5.50	\$10.50
Team Mascot/Logo	\$5.50	\$10.50
Front + Back Numbers	\$12.00	\$17.00

TWILL	ONE COLOR	TWO COLORS
Team Name	\$22.00	\$27.00
Front + Back Numbers	\$27.00	\$32.00
Player Names	\$22.00	
ArmourFuse Twill Patch (Max 3"x3")	\$11.00	\$11.00

EMBROIDERY	ONE COLOR	TWO COLORS
Team Name (up to 2")	\$10.00	\$10.00
see page 55 for Embroidered Mascot/Logo pricing		

ADDITIONAL STOCK OPTIONS & NOTES

- Player Numbers Per Location = 1/2 of above "Front + Back Numbers" pricing
- Player Name Directly On Jersey Only (No Nameplates)
- ArmourFuse Twill = Twill Pricing +\$10
- Add Tail to Script Font Twill Team Name +\$10
- Add Embroidery to Twill Tail +\$10
- Non-Stock designs and lettering may require additional charge at Under Armour's discretion (call for quote)

STOCK OPTIONS

3/16" 1-COLOR PIPE	LIST PRICE
Around Placket (UBJ316P)	\$17.00
Sleeve Ends (UBJ316S)	\$17.00
Down Side (UBP316D)	\$17.00

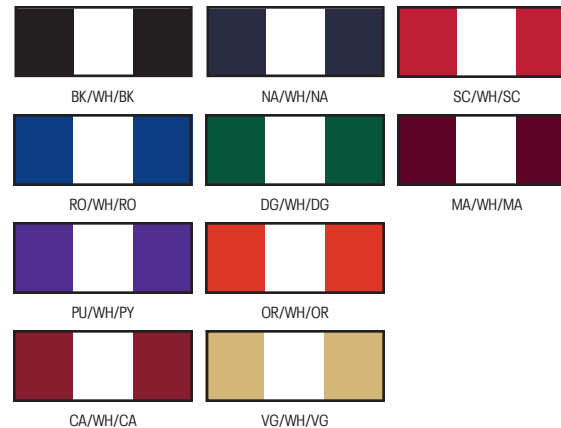
1/2" 3-COLOR BRAID	LIST PRICE
Around Placket (UBJ12AP)	\$17.00
Around Neck (UBJ12NB)	\$17.00
Sleeve Ends (UBJ12SE)	\$17.00
Down Sides (UBP12DS)	\$17.00

NOTE: Additional leadtime should be expected for orders including piping, braiding and/or hemming. Please contact a UA Sale Rep for updates.

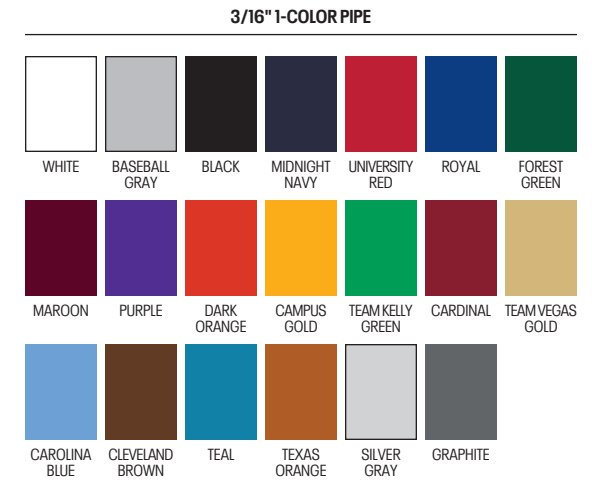
3/16" 1-COLOR PIPE AVAILABLE COLORS



1/2" 3-COLOR BRAID AVAILABLE COLORS



GAMEDAY OPTIONS



1/2" 3-COLOR BRAID

1 2 3 ANY COMBO OF PIPE COLORS

INCLUDED PIPE/BRAID

- 1. Jersey Front:** Around Neck **OR** Around Placket **OR** None
2. Jersey Sleeves: Sleeve Ends **OR** None
3. Pants: Down Side **OR** None

OPTIONAL PANT ALTERATIONS	LIST PRICE
Reduce Knicker Inseam 2" and Hem w/ Elastic	\$0.00
Increase Knicker Inseam 2" and Hem w/ Elastic	\$0.00
Increase Knicker Inseam 4" and Hem w/ Elastic*	\$15.00
Reduce Relaxed/Tapered Inseam 2" and Hem	\$0.00
Increase Relaxed/Tapered Inseam 2" and Hem	\$0.00
Increase Relaxed/Tapered Inseam 4" and Hem*	\$15.00

OPTIONAL ARMOURFUSE® TWILL (L X H)	LIST PRICE
Custom Font Team Name (Max. 14" x 4.25")	\$10.00
Custom Left Chest Team Logo (Max. 4" x 5")	\$15.00
Custom Sleeve Patch (Max. 4" x 4")	\$15.00
Custom Back Neck Patch (Max. 3" x 2")	\$15.00
Player Name (On Nameplate)	\$40.00
Player Name Directly on Jersey (No Nameplate)	\$30.00
Blank Nameplate	\$7.00
Add Tail to Script Font Team Name	\$20.00
Add Text to Script Font Tail	\$20.00

Note: Vector art must be provided for custom Armourfuse® Twill or additional artwork charges will apply

*Available on Men's styles only



ADDITIONAL LENGTH OPTIONS (ARMOURFUSE ONLY - \$10 FOR ALL -/+ OPTIONS)

BASEBALL/SOFTBALL

TYPE	ADJUSTMENT	CODE
JERSEYS	Add 2" body length	UJX2BDY
	Add 4" body length	UJX4BDY
PANTS	Subtract 2" from inseam	UJSHTN2
	Add 2" to inseam length	UJX2INS
	Add 4" to inseam length	UJX4INS

FOOTBALL

TYPE	ADJUSTMENT	CODE
JERSEYS	Shorten to waist length	
PANTS	Add 2" to inseam length	UJX2INS

LACROSSE/ FIELD HOCKEY

TYPE	ADJUSTMENT	CODE
JERSEYS	Add 2" body length	UJX2BDY
SHORTS	Subtract 1" from inseam	UJSHTN1
	Subtract 2" from inseam	UJSHTN2
	Add 1" to inseam length	UJX1INS
	Add 2" to inseam length	UJX2INS
KILTS	Add 1" to inseam length	UJX1INS
	Add 2" to inseam length	UJX2INS

BASKETBALL

TYPE	ADJUSTMENT	CODE
JERSEYS	Add 2" body length	UJX2BDY
	Add 4" body length	UJX4BDY
	Add 6" body length	UJX6BDY
SHORTS	Subtract 1" from inseam	UJSHTN1
	Add 1" to inseam length	UJX1INS
	Add 2" to inseam length	UJX2INS
	Add 3" to inseam length	UJX3INS
SHOOTING SHIRTS	Add 2" body, 1" sleeve	UJX2B1S
	Add 4" body, 2" sleeve	UJX4B2S
	Add 6" body, 3" sleeve	UJX6B3S

SOCCER

TYPE	ADJUSTMENT	CODE
JERSEYS	Add 2" body length	UJX2BDY
SHORTS	Subtract 1" from inseam	UJSHTN1
	Subtract 2" from inseam	UJSHTN2
	Add 1" to inseam length	UJX1INS
	Add 2" to inseam length	UJX2INS

TRACK & FIELD

TYPE	ADJUSTMENT	CODE
JERSEYS	Add 2" body length	UJX2BDY
LOOSE SHORTS*	Subtract 1" from inseam	UJSHTN1
	Add 1" to inseam length	UJX1INS

*UITS2M & UITS2W ONLY

TRAINING

TYPE	ADJUSTMENT	CODE
JERSEYS	Add 2" body length	UJX2BDY
	Add 4" body length	UJX4BDY
	Add 6" body length	UJX6BDY
SHORTS	Subtract 1" from inseam	UJSHTN1
	Subtract 2" from inseam	UJSHTN2
	Add 1" to inseam length	UJX1INS
	Add 2" to inseam length	UJX2INS
	Add 3" to inseam length	UJX3INS

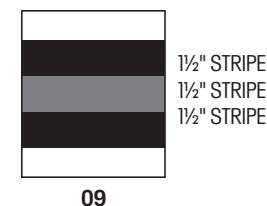
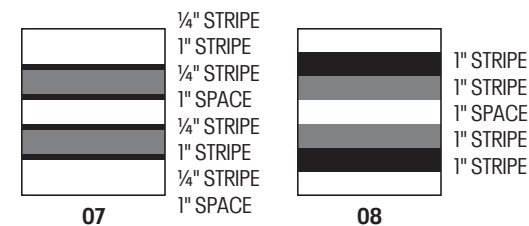
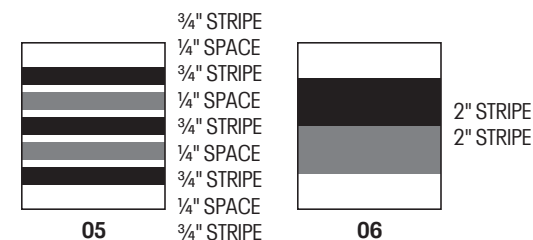
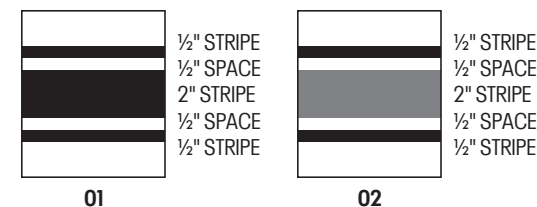
VOLLEYBALL

TYPE	ADJUSTMENT	CODE
JERSEYS	Add 2" body length	UJX2BDY
	Add 1" sleeve length	UJX1SL
SHORTS	Subtract 1" from inseam	UJSHTN1
	Subtract 2" from inseam	UJSHTN2

STANDARD SLEEVE PRINT STRIPES

*OPTIONS - Code numbers listed below stripe patterns

*Stripes may be adjusted to fit smaller garments and not measure exactly as shown.



EMBROIDERY

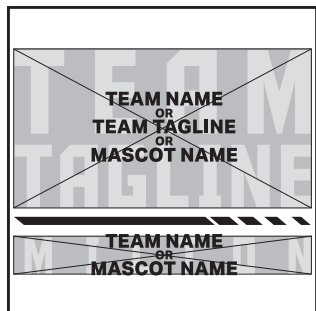
MASCOTS (STOCK ONLY)	LIST PRICE
Mascot	\$11.00
Mascot with One Line	\$12.00
Mascot with Two Lines	\$13.00
American Flag	\$11.00
Small/Homeplate	\$6.00
DIGITIZING (STOCK AND ARMOURFUSE ONLY)	LIST PRICE
Stock Designs and Lettering	\$180.00
Custom Logos	Call for Quote

- Prices are based upon size of designs, not the number of colors. Prices are subject to change if design exceeds specifications.
- Dimensions are maximum space - unless specifically noted best judgement will be used.
- Letter styles are available horizontal or arched.
- No digitizing charge for team names.
- Flag size up to 2" by 3" (bigger area - call for quote)
- Minimum order charges apply for embroidery
- All designs require an additional digitizing charge, except:
 - 1) Digitized designs supplied on a disk
 - 2) Digitized design is a re-order of an existing design

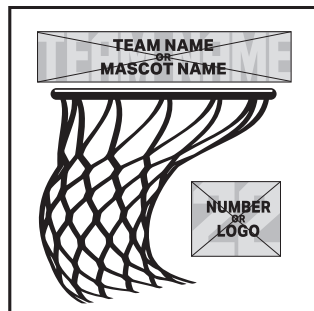


ARMOURFUSE® GRAPHIC OPTIONS

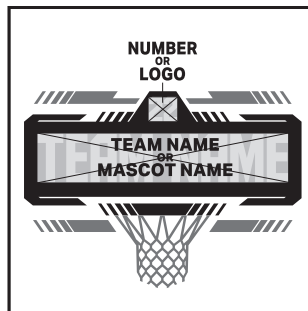
A



B



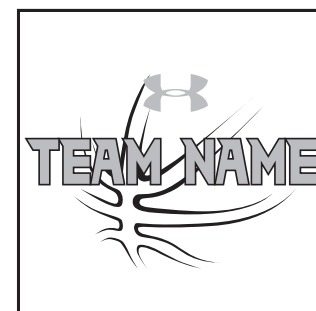
C



D



E



F



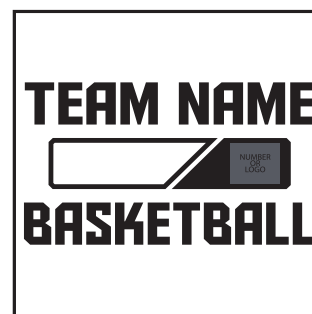
G



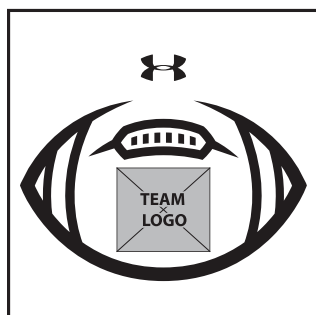
H



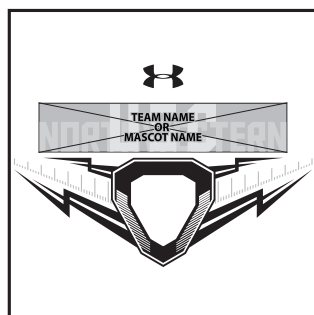
I



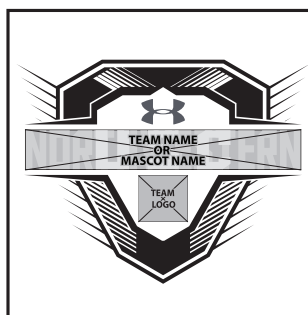
J



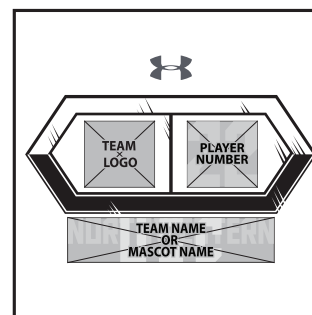
K



L



M





GAMEDAY TEAM UNIFORMS
ORDERING INFORMATION AND CUSTOMER SERVICE:
1-800-474-6118
www.uacustomuniforms.com



ARMOURFUSE™ TEAM UNIFORMS
ORDERING INFORMATION AND CUSTOMER SERVICE:
1-888-871-0990
www.underarmourteamuniforms.com



STOCK TEAM UNIFORMS
ORDERING INFORMATION AND CUSTOMER SERVICE:
1-888-871-0990
www.underarmourteamuniforms.com

ORDERING INFORMATION

Guarantee: The materials and workmanship of our garments are guaranteed when given fair treatment and used under normal conditions.

Color Matching: Scientifically, it is not possible to achieve a perfect color match from one dye lot to another. Therefore, we cannot guarantee a perfect match from order to order or from one fabric to another.

Color Abbreviation Key: The following abbreviations may be used when ordering merchandise.

BG Baseball Gray	EB Electric Blue	PI Pink	SI Silver Gray
BK Black	GP Graphite	PK Powderkeg Blue	TI Taxi
BR Brown	KE Team Kelly Green	PO Poison	TE Teal
CA Cardinal	LG Steeltown Gold	PU Purple	TO Texas Orange
CB Carolina Blue	MA Maroon	RO Royal	TP Tropic Pink
CP Capri	NA Midnight Navy	RU Gold Rush	VG Team Vegas Gold
DG Forest Green	OR Dark Orange	SC University Red	WH White

Price Policy: All catalog prices are list or suggested retail. Prices are subject to change without notice. Merchandise will be invoiced based on the prices in effect at the time the order is placed.

Terms: Prices are FOB shipping point. Payment is due Net 30.

Minimum Order Charges: A handling charge of \$10.00 will be added to orders of less than \$150.00 list. Custom and GamedaySelect fill-in minimum order is 6 units per style and color. A 100% surcharge will be applied to orders of 1-2 units, and a 50% surcharge for orders of 3-5 units.

Lettered Orders for COD Shipment: A 50% deposit is required on all lettered orders calling for COD shipment.

Delivery: Shipments will always be made by the fastest, least expensive means possible. The customer will assume any additional expense required to expedite delivery.

Order Cancellations: Cancellations must be received at least one day prior to the ship date. Special order garments cannot be cancelled after they have been cut. Lettered garments cannot be cancelled after they have been printed or sewn.

Returns: Claims must be reported to our office within 10 working days of merchandise receipt. Returns cannot be made after 30 days of the invoice date. All returns for plain merchandise must be clearly marked with an authorization number or label obtained from our office. All returns for lettered merchandise must be clearly marked "LETTERING." When requesting an authorization label, the following information is required: Reason for return, Invoice #, Style #, Color, Size/Quantity. An authorization label will then be sent to you to prepare the merchandise for return shipment. We reserve the right to repair, replace or issue credit for any merchandise returned. A 15% restocking fee and shipping charges will be charged for merchandise returned that is either not damaged or the damage is determined not to be our fault. All worn garments must be properly laundered prior to return or they will not be accepted.

All custom and custom-stock uniforms may not be returned under any circumstances if delivered properly.

Shortages: All claims must be made within 10 days of the invoice date.

New Accounts: All new accounts must be opened through your local sales representative. New accounts that do not have a Dunn and Bradstreet rating will be shipped COD until a credit line has been established.

Samples: Samples will be entered and billed as a regular order. Samples cannot be returned without prior approval from our office.

Imprint Orders: All imprint orders must be emailed, mailed or faxed in with detailed instructions on UA order forms. Imprint orders will not be taken by phone. Once garments have been lettered, the order cannot be cancelled or returned.

Under Armour will not be responsible for any items not checked for order accuracy or sizing before being sent to a printer/screener. We will not be responsible for shrinkage, defects, or damages caused during the imprinting of our garments by sources other than our own lettering department. Screenprinting sublimated uniforms can cause color migration. We do not recommend screenprinting on sublimated garments.

Photography is the property of Under Armour and is not to be used without written authorization.

UNIFORM CARE INSTRUCTIONS

To enhance the appearance and extend the life of your uniforms, Under Armour recommends that you follow these cleaning and storing procedures:

DO NOT DRY CLEAN

DO NOT WASH IN HOT WATER

DO NOT USE CHLORINE BLEACH

DO NOT USE FABRIC SOFTENER

DO NOT WASH WHITES AND COLORS TOGETHER

DO NOT OVERLOAD THE WASHING MACHINE

DO NOT MACHINE DRY ON HIGH HEAT

DO NOT LEAVE WET OR DAMP GARMENTS IN YOUR TRAVEL BAG, IN A PILE WITH OTHER CLOTHING OR IN WASHING MACHINE

- Pre wash uniform prior to use.
- Uniforms should always be laundered immediately after wearing. However, if this is not possible, rinse garments and hang individually on rust-proof hangers. (Moisture may cause color migration of acid dyes so we advise separating wet or damp uniforms.)
- Belts and any other contrasting color items should be washed separately from the garment.
- It is always advisable to test wash a single uniform according to directions before washing an entire load.
- Wash and rinse all garments in warm water (approx. 110°) with mild detergent. Remove promptly after wash cycle.
- For optimum results, hang garments (especially those with elastane) to dry. If you cannot hang dry, machine dry on the lowest setting. Turn jerseys inside out before machine drying. Remove items from dryer immediately upon completion of the cycle. (Excessive heat can cause fabric shrinkage, discoloration, and cracking and peeling of vinyl plastisol lettering inks.)
- Make sure uniforms are completely dry before storing. Store in a dry area to prevent mildew. Protect them from sunlight and fluorescent light to prevent yellowing.

PLEASE NOTE: Under Armour will not be responsible for uniforms that are damaged due to improper care and maintenance. Failure to follow our specified care instructions will void all guarantees.

UNIFORM FILL-IN LIFECYCLE

LAST SHOWN IN CATALOG	LAST FILL-IN SEASON	LAST FILL-IN SHIP
FA'22	FA'25	12/15/2025
WI'22	WI'25	3/15/2026
SP'23	SP'26	6/15/2026
FA'23	FA'26	12/15/2026
W'23	W'26	3/15/2027
SP'24	SP'27	6/15/2027
FA'24	FA'27	12/15/2027
WI'24	WI'27	3/15/2028
SP'25	SP'28	6/15/2028
FA'25	FA'28	12/15/2028
W'25	W'28	3/15/2029
SP'26	SP'29	6/15/2029



MEN'S



COMPRESSION

Ultra-tight, second skin fit that keeps you locked in & makes you feel like you can do anything.



FITTED

A slimmer, athletic cut that allows total mobility but eliminates the bulk of extra fabric.



LOOSE

Fuller cut for complete comfort, total range of motion & greater breathability.



HOW TO MEASURE

CHEST: Place the tape measure under your arms at the fullest part of your chest, wrap around your body until your fingers meet and mark the measurement

WAIST: Measure around your natural waistline - right above your hips. Be careful not to squeeze too tight to allow a little give.

HIPS: With your feet together, measure around the fullest part of your hips to ensure you'll have enough room to move comfortably.

	US SIZE	CHEST (IN)	WAIST (IN)	HIP (IN)
SM	26-28	34-37	29-31	34-36
MD	30-32	37-41	31-34	36-39
LG	34-36	41-44	34-37	39-42
XL	38-40	44-48	37-41	42-46
2XL	42-44	48-52	41-45.5	46-50
3XL	46-48	52-56	45.5-50	50-54
4XL	50-52	56-60	50-54.5	54-58
5XL	54-56	60-64	54.5-59	58-62

BOYS



FITTED

A slimmer, athletic cut that allows total mobility but eliminates the bulk of extra fabric.



LOOSE

Fuller cut for complete comfort, total range of motion & greater breathability.



HOW TO MEASURE

CHEST: Place the tape measure under your arms at the fullest part of your chest, wrap around your body until your fingers meet and mark the measurement

WAIST: Measure around your natural waistline - right above your hips. Be careful not to squeeze too tight to allow a little give.

HIPS: With your feet together, measure around the fullest part of your hips to ensure you'll have enough room to move comfortably.

	US SIZE	CHEST (IN)	WAIST (IN)	HIP (IN)
YXS	7	25-26	23-24	26-27
YSM	8	26-27	24-25	27-28
YMD	10-12	27-29	25-27	28-31
YLG	14-16	29-32.5	27-30	31-34
YXL	18-20	32.5-35.5	30-33	34-37



WOMEN'S



COMPRESSION

Ultra-tight, second skin fit that keeps you locked in & makes you feel like you can do anything.



FITTED

Sits close to the skin for a streamlined fit without the squeeze of compression.



LOOSE

Fuller, more generous cut for enhanced range of motion & an effortlessly relaxed fit.



HOW TO MEASURE

CHEST: Place the tape measure under your arms at the fullest part of your chest, wrap around your body until your fingers meet and mark the measurement

WAIST: Measure around your natural waistline - right above your hips. Be careful not to squeeze too tight to allow a little give.

HIPS: With your feet together, measure around the fullest part of your hips to ensure you'll have enough room to move comfortably.

	US SIZE	CHEST (IN)	WAIST (IN)	HIP (IN)
XS	0-2	32.5-33.5	25.5-27	34.5-36
SM	4-6	33.5-36	27-29	36-38
MD	8-10	36-38	29-31	38-40
LG	12-14	38-41	31-34	40-43
XL	16	41-44	34-37	43-46
2XL	18	44-47	37-40	46-49
3XL	20	47-50	40-43	49-52
4XL	22	50-53	43-46	52-55

GIRLS



FITTED

Sits close to the skin for a streamlined fit without the squeeze of compression.



LOOSE

Fuller, more generous cut for enhanced range of motion & an effortlessly relaxed fit.



HOW TO MEASURE

CHEST: Place the tape measure under your arms at the fullest part of your chest, wrap around your body until your fingers meet and mark the measurement

WAIST: Measure around your natural waistline - right above your hips. Be careful not to squeeze too tight to allow a little give.

HIPS: With your feet together, measure around the fullest part of your hips to ensure you'll have enough room to move comfortably.

	US SIZE	CHEST (IN)	WAIST (IN)	HIP (IN)
YXS	7	25-26.5	23-24	26-28
YSM	8	26.5-27.5	24-24.5	28-29
YMD	10-12	27.5-30.5	24.5-26.5	29-32.5
YLG	14-16	30.5-34	26.5-30.5	32.5-36.5
YXL	18-20	34-36	30.5-32.5	36.5-38.5

WEST

GREG ROMINE
719.238.9244
gromine@underarmour.com
HI // CA // AZ // UT //
CO // OK // DFWTX

ANNA ROPER
aroper@underarmour.com
AK // WA // OR // ID //
MT // WY // NV

FRANK WEBER
618.540.3955
fweber@underarmour.com
IL // MO // IA // MN //
NE // KS // ND // SD

BLAKE KUENZI
405.488.4942
blake.kuenzi@underarmour.com
NM // Central, South & West Texas

EAST

MONTE GIBBS
662.801.3039
mgibbs@underarmour.com
TN // LA // AL //
MS // AR // KY

DAN WILLIAMS
352.672.1676
dwilliams@underarmour.com
NC // SC // GA // FL

TONY DONOFRIO
NATIONAL SALES MANAGER
419.356.9742
tonyd@underarmour.com
WI // MI // IN // OH

GARY POWERS
410.746.3790
gpowers@underarmour.com
MD // DC // VA // WV //
Eastern PA

BOB BARTLETT
315.380.6505
bobb@underarmour.com
NY // Western PA

JAY KELLEHER
443.615.0462
jkelleher@underarmour.com
New England // NJ

COLLEGIATE

TOMMY AMICO
951.808.0367
tamico@underarmour.com
WEST

TODD LOCKLEAR
410.454.6572
tlocklear@underarmour.com
EAST

CHRIS PORTS
443.220.1009
cports@underarmour.com
MID ATLANTIC

BELLA GARONE
631.307.0009
isabella.garone@underarmour.com
NORTHEAST

BRIAN SWATEK
bswatek@underarmour.com
SOUTH

DAN LAWLER
dlawler@underarmour.com
MIDWEST

LICENSEES

FOUNDER SPORT GROUP
Stock & Armourfuse Uniforms
www.underarmourteamuniforms.com
888.871.0990
UAStatus@foundersportgroup.com

POWERS ATHLETIC
Custom Uniforms
www.uacustomuniforms.com
800.474.6118
customerservice@powersathletic.com

THE GAME
Custom Headwear
www.uateamheadwear.com
800.723.5656
customerservice@2thegame.com

USB
McDavid & Shock Doctor
Water Bottles
657.383.4438
UA@unitedspb.com

SAFILO
Eyewear
uateamsportsorders@safilo.com



TEL: 1.888.828.1547 / B2B: ARMOURHOUSE.UNDERARMOUR.COM

COLLEGIATE

TEAMSPTS COLLEGIATE / TEAMSPTS.COLLEGIATE@UNDERARMOUR.COM

EAST

TEAM SPORTS SE / TEAMSPTSSE@UNDERARMOUR.COM
TEAM SPORTS NE / TEAMSPTSNE@UNDERARMOUR.COM

WEST

TEAM SPORTS WC / TEAMSPTSWC@UNDERARMOUR.COM
TEAM SPORTS SW / TEAMSPTS@UNDERARMOUR.COM

ALL TEAM SPORTS ORDERS AND QUESTIONS PLEASE USE THE FOLLOWING:

1.888.828.1547
Corporate Headquarters
1020 Hull Street
Baltimore, MD 21230

CORPORATE OFFICE HOURS OF OPERATION

Monday through Friday, 8:30am – 5:30pm, EST.

UNDER ARMOUR® B2B – ONLINE ORDERING

armourhouse.underarmour.com

- 24/7 access to check inventory and place orders
- Ability to track orders and shipments
- Priority product allocation
- Faster processing time

UNDER ARMOUR® B2B – SUPPORT

B2B_support@underarmour.com

UNDER ARMOUR® RETURN POLICY

Under Armour® stands behind its gear and EXPECTS nothing less than perfection. If you have received a defective product, an incorrect size, or an incorrect order, please contact us immediately for a return authorization number so that we can quickly process your return and ensure your satisfaction.

ALL RETURNS MUST BE COMPLETED WITHIN 30 DAYS OF RECEIPT AND MUST BE IN REASONABLE CONDITION. ALL RETURNS MUST HAVE THE RA# CLEARLY MARKED ON THE CARTON. ALL RETURNS ARE SUBJECT TO A 15% RESTOCKING FEE.

Should you need to return or exchange an item, you MUST include your RA#, a copy of your invoice, and an explanation in writing as to why you are returning the item. Send your return to the marked address on your pack list. If you are exchanging merchandise, you are responsible for the cost of returning the product. Original shipping costs are non-refundable. All returned merchandise must be received in new, resalable condition.

ODH RETURNS:

Under Armour Returns
RA#
7030 Tradepoint Ave
Dock Door 69
Sparrows Point, MD 21219

RIALTO RETURNS:

Under Armour Returns
RA#
2510 W Walnut Ave
Rialto, CA 92376

NASHVILLE RETURNS:

Under Armour Returns
RA#
13 Athlete's Way
Mt Juliet, TN 37122

UNDER ARMOUR® CANCELLATION POLICY

Any request for cancellation of an order for UA products must be made, in writing, through the customer's UA Sales Representative. A request to cancel an order must be made more than 30 days before the customer's original desired ship date. All cancellations are subject to UA approval.

ALL PRICES SET FORTH HEREIN ARE SUBJECT TO CHANGE WITHOUT NOTICE.

UNDER ARMOUR PERFORMANCE
2026