



RUN

FALL 2026





UNDER ARMOUR.

PROTECT THIS HOUSE.®



VISION

TO INSPIRE YOU WITH PERFORMANCE
SOLUTIONS YOU NEVER KNEW
YOU NEEDED BUT CAN'T IMAGINE
LIVING WITHOUT.

MISSION

UNDER ARMOUR
MAKES YOU BETTER.

RUNNING —

- 001 M'S RUNNING UNIFORMS
- 015 M'S RUNNING APPAREL
- 018 W'S RUNNING UNIFORMS
- 033 W'S RUNNING APPAREL
- 035 RUNNING FOOTWEAR
- 042 MEN'S AF TRAINING
- 052 WOMEN'S AF TRAINING
- 057 UNIFORM ORDERING INFO



ARMOURFUSE RUNNING

Brilliant, vibrant team colors permanently fused directly into textiles. Limitless customization, all-inclusive pricing with exclusive UA designs and customized prints. 41 different colors and 18 prints available. 6 piece minimum order.



ARMOURFUSE RUNNING

ARMOURFUSE PRIMETIME SPEEDSUIT

ADULT: SM-2XL, OVERSIZE 3XL-4XL

STYLE	SIZE	PRICE
UJTUTCM (M)	SM-2XL	\$139.00

Smooth, powerful knit fabric for superior performance. UA engineered mesh with Microthread technology delivers true breathability in a light, durable, fast-drying fabric. Center-front zipper for easy on-off performance. Lined interior gusset. 2-ply lower body.



ARCH

NEW DESIGN FIRST SHIP: 6/1/2025



LANE BLUR

NEW DESIGN FIRST SHIP: 6/1/2025



RACER

NEW DESIGN FIRST SHIP: 6/1/2025

SPEEDSUIT STYLES CONTINUE ON FOLLOWING PAGE

OVERSIZED SURCHARGE +\$5 PER SIZE | ADDITIONAL LENGTH OPTIONS FOUND ON PAGE 61

ARMOURFUSE UNIFORMS | ORDERING INFORMATION AND CUSTOMER SERVICE: 1-888-871-0990 | www.underarmourteamuniforms.com | FILL-IN LIFECYCLE TIMING FOUND ON PAGE 63. DECORATION OPTIONS AND ORDERING INFORMATION ARE AVAILABLE ON PAGES 57-63.



ARMOURFUSE RUNNING

SPEEDSUIT STYLES CONTINUED FROM PREVIOUS PAGE

ARMOURFUSE PRIMETIME SPEEDSUIT

ADULT: SM-2XL, OVERSIZE 3XL-4XL

STYLE	SIZE	PRICE
UJTUTCM (M)	SM-2XL	\$139.00

Smooth, powerful knit fabric for superior performance. UA engineered mesh with Microthread technology delivers true breathability in a light, durable, fast-drying fabric. Center-front zipper for easy on-off performance. Lined interior gusset. 2-ply lower body.



SUPER SOFT



OVERSIZED SURCHARGE +\$5 PER SIZE | ADDITIONAL LENGTH OPTIONS FOUND ON PAGE 61

ARMOURFUSE UNIFORMS | ORDERING INFORMATION AND CUSTOMER SERVICE: 1-888-871-0990 | www.underarmourteamuniforms.com | FILL-IN LIFECYCLE TIMING FOUND ON PAGE 63. DECORATION OPTIONS AND ORDERING INFORMATION ARE AVAILABLE ON PAGES 57-63.



ARMOURFUSE PRIMETIME SPEED TANK

ADULT: SM-2XL, OVERSIZE 3XL-4XL

STYLE	SIZE	PRICE
UJTIC4M (M)	SM-2XL	\$87.50

Smooth, powerful knit fabric for superior performance. Designed to deliver true breathability with a light, durable, fast-drying fabric. Strategically placed mesh panel on the backside for added breathability. Compressive, distraction-free fit. Athletic racerback design unlocks mobility.



ARMOURFUSE COMPRESSION BOTTOMS 2.0

ADULT: LEGGING: XS-2XL, OVERSIZE 3XL-4XL
SHORT: SM-3XL, OVERSIZE 3XL

TRACK LEGGING 2.0	SIZE	PRICE
UJTLC2M (M)	XS-2XL	\$99.00

Armour 2.0 - Tricot - 7.5 oz. Updated fit and design lines, signature heatgear fabrication with 4-way stretch. Distractionless seaming with zipper at leg opening, drawcord on interior waistband. Inseam: 27.75".

COMPRESSION SHORT 2.0	SIZE	PRICE
UJTSC2M (M)	SM-2XL	\$82.00

Armour 2.0 - Tricot - 7.5 oz. Updated fit and design lines, signature heatgear fabrication with 4-way stretch. Inseam: 7.5".

IF YOUR TEAM CHOOSES ANY OF THE UA LANE DESIGNS 1-7, WE RECOMMEND SOLID-COLORED COMPRESSION BOTTOMS.

BLK GPH MDN RED RYL



ARCH

NEW DESIGN FIRST SHIP: 6/1/2025

SHOWN WITH
COMPRESSION SHORT 2.0



LANE BLUR

NEW DESIGN FIRST SHIP: 6/1/2025

SHOWN WITH
COMPRESSION SHORT 2.0



RACER

NEW DESIGN FIRST SHIP: 6/1/2025

SHOWN WITH
TRACK LEGGING 2.0

SPEED STYLES CONTINUE ON FOLLOWING PAGE

OVERSIZED SURCHARGE +\$5 PER SIZE | ADDITIONAL LENGTH OPTIONS FOUND ON PAGE 61



ARMOURFUSE RUNNING

SPEED

SPEED STYLES CONTINUED FROM PREVIOUS PAGE

ARMOURFUSE PRIMETIME SPEED TANK

ADULT: SM-2XL, OVERSIZE 3XL-4XL

STYLE	SIZE	PRICE
UJTIC4M (M)	SM-2XL	\$87.50

Smooth, powerful knit fabric for superior performance. Designed to deliver true breathability with a light, durable, fast-drying fabric. Strategically placed mesh panel on the backside for added breathability. Compressive, distraction-free fit. Athletic racerback design unlocks mobility.

ARMOURFUSE COMPRESSION BOTTOMS

LAST SEASON OFFERED

ADULT: SM-2XL, OVERSIZE 3XL-4XL

TRACK LEGGING	SIZE	PRICE
UJTLC1M (M)	SM-2XL	\$99.00

COMPRESSION SHORT	SIZE	PRICE
UJTSC1M (M)	SM-2XL	\$83.00

Compression bottoms offered in our signature Heatgear fabrication with 4-way stretch. Tights: drawcord on interior waistband and zipper closure at ankle. Compression Short: drawcord on interior waistband and 10" inseam.

IF YOUR TEAM CHOOSES ANY OF THE UA LANE 1-7 DESIGNS, WE RECOMMEND SOLID-COLORED OR TWO-COLORED COMPRESSION BOTTOMS. THESE ARE THE FIRST TWO OPTIONS IN THE UNIFORM BUILDER.

SUBLIMATED PANEL ON FRONT BELOW KNEE ON LEGGING AND ABOVE KNEE ON SHORT. REST OF GARMENT IS DYED IN ONE OF THE FOLLOWING COLORS:

BLK GPH MDN RED RYL



OVERSIZED SURCHARGE +\$5 PER SIZE | ADDITIONAL LENGTH OPTIONS FOUND ON PAGE 61



ARMOURFUSE RUNNING

DISTANCE

ARMOURFUSE PRIMETIME DISTANCE SINGLET

ADULT: SM-2XL, OVERSIZE 3XL-4XL

STYLE	SIZE	PRICE
UJTF7M (M)	SM-2XL	\$96.00

Smooth, powerful knit fabric for superior performance. Designed to deliver true breathability with a light, durable, fast-drying fabric. Mesh backside for added breathability. Clean silhouette designed to eliminate distractions during competition. Athletic racerback design unlocks mobility.

ARMOURFUSE LOOSE BOTTOMS

ADULT: SM-2XL, OVERSIZE 3XL-4XL

SPLIT SHORT 2.0	SIZE	PRICE
UJTSW3M (M)	SM-2XL	\$96.00

Updated streamlined fit. Ultra lightweight and durable sublimated woven fabric with internal liner. 2.5" inseam.

7" SHORT 2.0	SIZE	PRICE
UJTSW2M (M)	SM-2XL	\$106.00

Updated streamlined fit. Ultra lightweight and durable sublimated woven fabric. 7" inseam.

ARMOURFUSE COMPRESSION BOTTOMS

LAST SEASON OFFERED

ADULT: SM-2XL, OVERSIZE 3XL-4XL

TRACK LEGGING	SIZE	PRICE
UJTL1M (M)	SM-2XL	\$99.00

COMPRESSION SHORT	SIZE	PRICE
UJTSC1M (M)	SM-2XL	\$83.00

Compression bottoms offered in our signature Heatgear fabrication with 4-way stretch. Tights: drawcord on interior waistband and zipper closure at ankle. Compression Short: drawcord on interior waistband and 10" inseam.

IF YOUR TEAM CHOOSES ANY OF THE UA LANE 1-7 DESIGNS, WE RECOMMEND SOLID-COLORED OR TWO-COLORED COMPRESSION BOTTOMS. THESE ARE THE FIRST TWO OPTIONS IN THE UNIFORM BUILDER.

SUBLIMATED PANEL ON FRONT BELOW KNEE ON LEGGING AND ABOVE KNEE ON SHORT. REST OF GARMENT IS DYED IN ONE OF THE FOLLOWING COLORS:

BLK GPH MDN RED RYL



OVERSIZED SURCHARGE +\$5 PER SIZE | ADDITIONAL LENGTH OPTIONS FOUND ON PAGE 61



ARMOURFUSE RUNNING

FIELD

ARMOURFUSE PRIMETIME FIELD SHORT SLEEVE

ADULT: SM-2XL, OVERSIZE 3XL-4XL

STYLE	SIZE	PRICE
UJTL7M (M)	SM-2XL	\$96.00

Smooth, powerful knit fabric for superior performance. Designed to deliver true breathability with a light, durable, fast-drying fabric. Strategically placed mesh panel on the backside for added breathability. Raglan sleeves for maximum mobility. Clean silhouette designed to eliminate distractions during competition.

ARMOURFUSE LOOSE BOTTOMS

ADULT: SM-2XL, OVERSIZE 3XL-4XL

SPLIT SHORT 2.0	SIZE	PRICE
UJTSW3M (M)	SM-2XL	\$96.00

Updated streamlined fit. Ultra lightweight and durable sublimated woven fabric with internal liner. 2.5" inseam.

7" SHORT 2.0	SIZE	PRICE
UJTSW2M (M)	SM-2XL	\$106.00

Updated streamlined fit. Ultra lightweight and durable sublimated woven fabric. 7" inseam.

ARMOURFUSE COMPRESSION BOTTOMS

LAST SEASON OFFERED

ADULT: SM-2XL, OVERSIZE 3XL-4XL

TRACK LEGGING	SIZE	PRICE
UJTLCLM (M)	SM-2XL	\$99.00

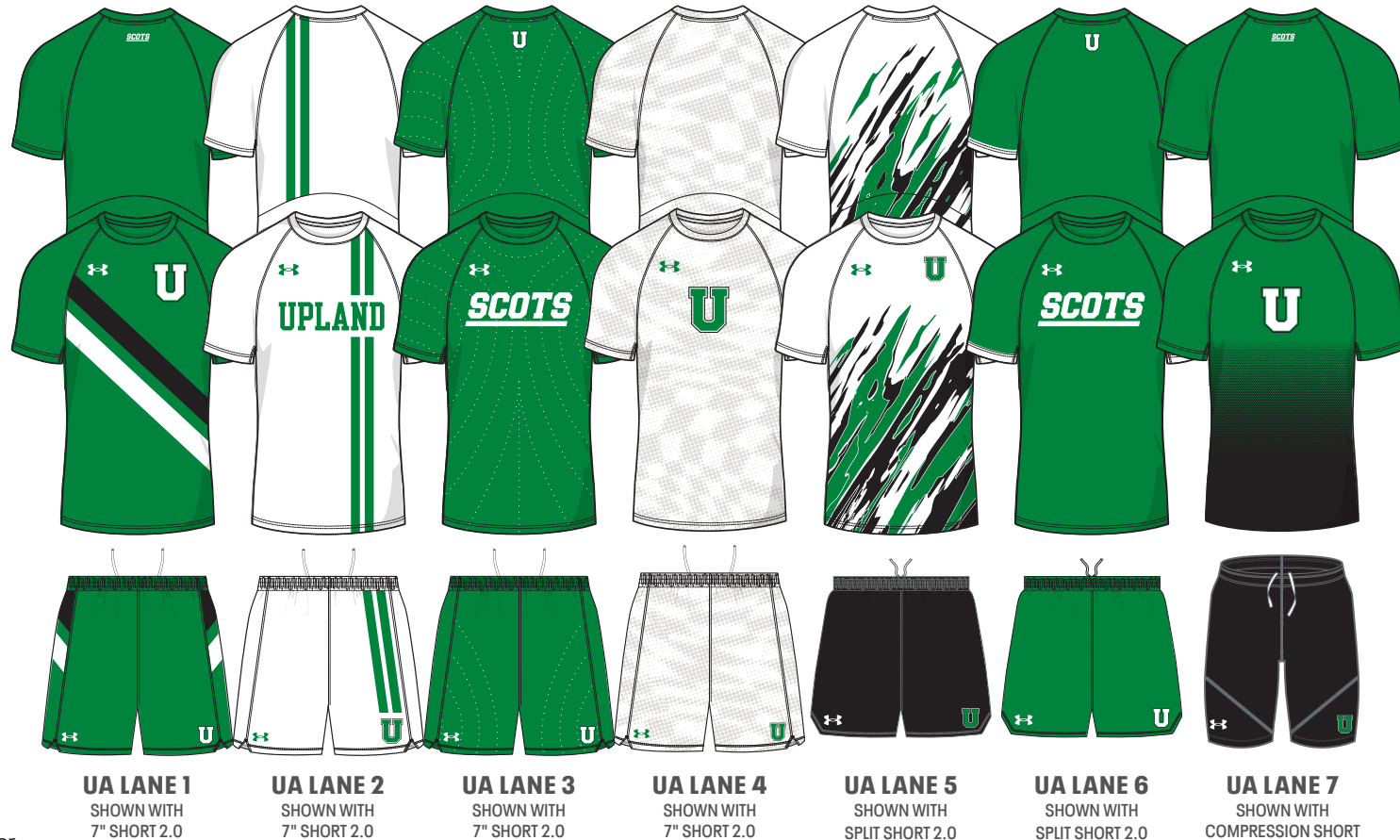
COMPRESSION SHORT	SIZE	PRICE
UJTSC1M (M)	SM-2XL	\$83.00

Compression bottoms offered in our signature Heatgear fabrication with 4-way stretch. Tights: drawcord on interior waistband and zipper closure at ankle. Compression Short: drawcord on interior waistband and 10" inseam.

IF YOUR TEAM CHOOSES ANY OF THE UA LANE 1-7 DESIGNS, WE RECOMMEND SOLID-COLORED OR TWO-COLORED COMPRESSION BOTTOMS. THESE ARE THE FIRST TWO OPTIONS IN THE UNIFORM BUILDER.

SUBLIMATED PANEL ON FRONT BELOW KNEE ON LEGGING AND ABOVE KNEE ON SHORT. REST OF GARMENT IS DYED IN ONE OF THE FOLLOWING COLORS:

BLK GPH MDN RED RYL



OVERSIZED SURCHARGE +\$5 PER SIZE | ADDITIONAL LENGTH OPTIONS FOUND ON PAGE 61



RUNNING

MEN'S UNIFORMS

MEN'S APPAREL

WOMEN'S UNIFORMS

WOMEN'S APPAREL

FOOTWEAR

ARMOURFUSE RUNNING





ARMOURFUSE RUNNING

ARMOURFUSE SHOWTIME 2 TOPS

LAST SEASON OFFERED

ADULT: SM-2XL, OVERSIZE 3XL-4XL

YOUTH: YSM-YXL

COMP. SINGLET	SIZE	PRICE
UJTJCSM (M)	SM-2XL	\$85.00

FITTED SINGLET	SIZE	PRICE
UJTJFSM (M)	SM-2XL	\$85.00
UJTJFSY (Y)	YSM-YXL	\$69.00

Signature lightweight 4-way stretch knit HeatGear® fabrication with maximum breathability.

LOOSE SHORT SLEEVE	SIZE	PRICE
UJTJLSM (M)	SM-2XL	\$85.00

Sublimated 4-way stretch flat knit front with stretch mesh back.



ARMOURFUSE COMPRESSION BOTTOMS 2.0

ADULT: LEGGING: XS-2XL, OVERSIZE 3XL-4XL

SHORT: SM-3XL, OVERSIZE 3XL

TRACK LEGGING 2.0	SIZE	PRICE
UJTLC2M (M)	XS-2XL	\$99.00

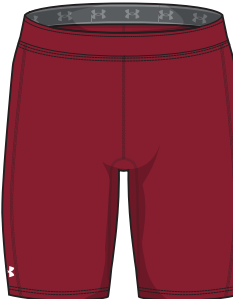
Armour 2.0 - Tricot - 7.5 oz. Updated fit and design lines, signature heatgear fabrication with 4-way stretch. Distractionless seaming with zipper at leg opening, drawcord on interior waistband. Inseam: 27.75".

COMPRESSION SHORT 2.0	SIZE	PRICE
UJTSC2M (M)	SM-2XL	\$82.00

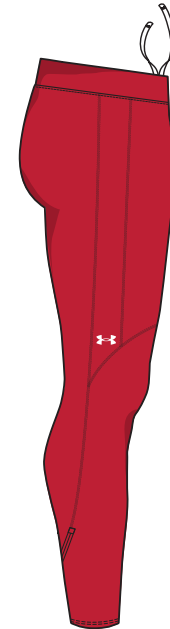
Armour 2.0 - Tricot - 7.5 oz. Updated fit and design lines, signature heatgear fabrication with 4-way stretch. Inseam: 7.5".

IF YOUR TEAM CHOOSES ANY OF THE UA LANE DESIGNS 1-7, WE RECOMMEND SOLID-COLORED COMPRESSION BOTTOMS.

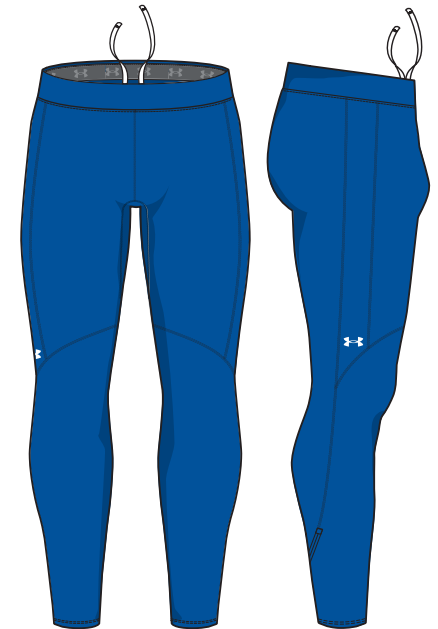
BLK GPH MDN RED RYL



ACCELERATE
COMPRESSION SINGLET
WITH COMPRESSION SHORT 2.0



BOLT
COMPRESSION SINGLET
WITH TRACK LEGGING 2.0



STRAIGHTAWAY
COMPRESSION SINGLET
WITH TRACK LEGGING 2.0

OVERSIZED SURCHARGE +\$5 PER SIZE | ADDITIONAL LENGTH OPTIONS FOUND ON PAGE 61



ARMOURFUSE RUNNING

ARMOURFUSE SHOWTIME 2 TOPS

LAST SEASON OFFERED

ADULT: SM-2XL, OVERSIZE 3XL-4XL

YOUTH: YSM-YXL

COMP. SINGLET	SIZE	PRICE
UJTJCSM (M)	SM-2XL	\$85.00

FITTED SINGLET	SIZE	PRICE
UJTJFSM (M)	SM-2XL	\$85.00
UJTJFSY (Y)	YSM-YXL	\$69.00

Signature lightweight 4-way stretch knit HeatGear® fabrication with maximum breathability.

LOOSE SHORT SLEEVE	SIZE	PRICE
UJTJLSM (M)	SM-2XL	\$85.00

Sublimated 4-way stretch flat knit front with stretch mesh back.

ARMOURFUSE LOOSE BOTTOMS

ADULT: SM-2XL, OVERSIZE 3XL-4XL

YOUTH: YXS-YXL

SPLIT SHORT	SIZE	PRICE
UJTSSPM (M)	SM-2XL	\$72.50
UJTSSPY (Y)	YXS-YXL	\$67.00

Ultra lightweight and durable sublimated woven fabric with internal liner. 2.5" inseam.

7" SHORT	SIZE	PRICE
UJTS2M (M)	SM-2XL	\$83.00

Ultra lightweight and durable sublimated woven fabric. +1, -1" inseam length options available. 7" inseam.

ARMOURFUSE COMPRESSION BOTTOMS

LAST SEASON OFFERED

ADULT: SM-2XL, OVERSIZE 3XL-4XL

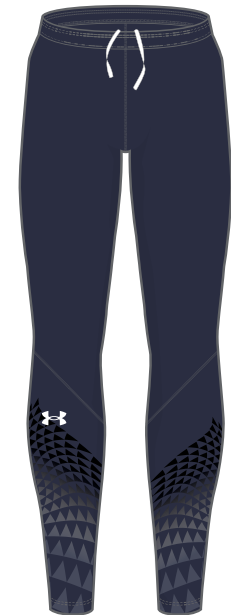
TRACK LEGGING	SIZE	PRICE
UJTL1M (M)	SM-2XL	\$99.00

COMPRESSION SHORT	SIZE	PRICE
UJTSC1M (M)	SM-2XL	\$83.00

Compression bottoms offered in our signature Heatgear fabrication with 4-way stretch. Tights: drawcord on interior waistband and zipper closure at ankle. Compression Short: drawcord on interior waistband and 10" inseam.

SUBLIMATED PANEL ON FRONT BELOW KNEE ON LEGGING AND ABOVE KNEE ON SHORT. REST OF GARMENT IS DYED IN ONE OF THE FOLLOWING COLORS:

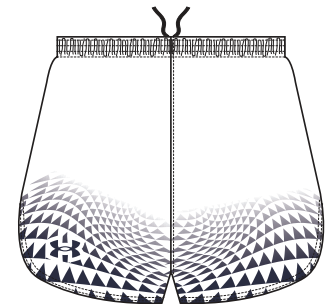
BLK GPH MDN RED RYL



ACCELERATE
COMPRESSION SINGLET
WITH TRACK LEGGING



ACCELERATE
LOOSE SHORTSLEEVE WITH
COMPRESSION SHORT



ACCELERATE
FITTED SINGLET
WITH SPLIT SHORT

OVERSIZED SURCHARGE +\$5 PER SIZE | ADDITIONAL LENGTH OPTIONS FOUND ON PAGE 61



ARMOURFUSE RUNNING

ARMOURFUSE SHOWTIME 2 TOPS

LAST SEASON OFFERED

ADULT: SM-2XL, OVERSIZE 3XL-4XL

YOUTH: YSM-YXL

COMP. SINGLET	SIZE	PRICE
UJTJCSM (M)	SM-2XL	\$85.00
FITTED SINGLET		
UJTJFSM (M)	SM-2XL	\$85.00
UJTJFSY (Y)	YSM-YXL	\$69.00

Signature lightweight 4-way stretch knit HeatGear® fabrication with maximum breathability.

LOOSE SHORT SLEEVE	SIZE	PRICE
UJTJLSM (M)	SM-2XL	\$85.00

Sublimated 4-way stretch flat knit front with stretch mesh back.

ARMOURFUSE LOOSE BOTTOMS

ADULT: SM-2XL, OVERSIZE 3XL-4XL

YOUTH: YXS-YXL

SPLIT SHORT	SIZE	PRICE
UJTSSPM (M)	SM-2XL	\$72.50
UJTSSPY (Y)	YXS-YXL	\$67.00

Ultra lightweight and durable sublimated woven fabric with internal liner. 2.5" inseam.

7" SHORT	SIZE	PRICE
UJTS2M (M)	SM-2XL	\$83.00

Ultra lightweight and durable sublimated woven fabric. +1, -1" inseam length options available. 7" inseam.

ARMOURFUSE COMPRESSION BOTTOMS

LAST SEASON OFFERED

ADULT: SM-2XL, OVERSIZE 3XL-4XL

TRACK LEGGING	SIZE	PRICE
UJTLC1M (M)	SM-2XL	\$99.00
COMPRESSION SHORT		
UJTSC1M (M)	SM-2XL	\$83.00

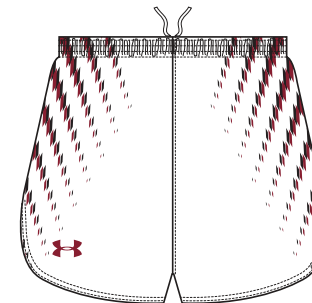
Compression bottoms offered in our signature Heatgear fabrication with 4-way stretch. Tights: drawcord on interior waistband and zipper closure at ankle. Compression Short: drawcord on interior waistband and 10" inseam.

SUBLIMATED PANEL ON FRONT BELOW KNEE ON LEGGING AND ABOVE KNEE ON SHORT. REST OF GARMENT IS DYED IN ONE OF THE FOLLOWING COLORS:

BLK GPH MDN RED RYL



BOLT
COMPRESSION SINGLET
WITH TRACK LEGGING



BOLT
LOOSE SHORT SLEEVE
WITH SPLIT SHORT



BOLT
FITTED SINGLET WITH
COMPRESSION SHORT

OVERSIZED SURCHARGE +\$5 PER SIZE | ADDITIONAL LENGTH OPTIONS FOUND ON PAGE 61



ARMOURFUSE RUNNING

ARMOURFUSE SHOWTIME 2 TOPS

LAST SEASON OFFERED

ADULT: SM-2XL, OVERSIZE 3XL-4XL

YOUTH: YSM-YXL

COMP. SINGLET	SIZE	PRICE
UJTJCSM (M)	SM-2XL	\$85.00

FITTED SINGLET	SIZE	PRICE
UJTJFSM (M)	SM-2XL	\$85.00
UJTJFSY (Y)	YSM-YXL	\$69.00

Signature lightweight 4-way stretch knit HeatGear® fabrication with maximum breathability.

LOOSE SHORT SLEEVE	SIZE	PRICE
UJTJLSM (M)	SM-2XL	\$85.00

Sublimated 4-way stretch flat knit front with stretch mesh back.

ARMOURFUSE LOOSE BOTTOMS

ADULT: SM-2XL, OVERSIZE 3XL-4XL

YOUTH: YXS-YXL

SPLIT SHORT	SIZE	PRICE
UJTSSPM (M)	SM-2XL	\$72.50
UJTSSPY (Y)	YXS-YXL	\$67.00

Ultra lightweight and durable sublimated woven fabric with internal liner. 2.5" inseam.

7" SHORT	SIZE	PRICE
UJTS2M (M)	SM-2XL	\$83.00

Ultra lightweight and durable sublimated woven fabric. +1, -1" inseam length options available. 7" inseam.

ARMOURFUSE COMPRESSION BOTTOMS

LAST SEASON OFFERED

ADULT: SM-2XL, OVERSIZE 3XL-4XL

TRACK LEGGING	SIZE	PRICE
UJTLC1M (M)	SM-2XL	\$99.00

COMPRESSION SHORT	SIZE	PRICE
UJTSC1M (M)	SM-2XL	\$83.00

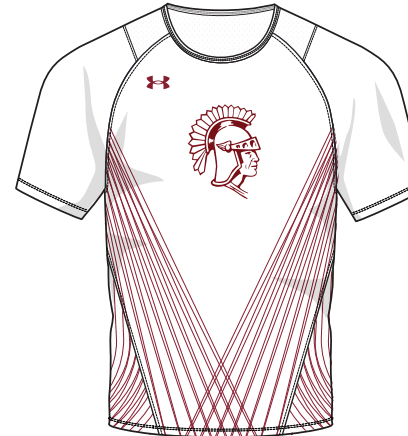
Compression bottoms offered in our signature Heatgear fabrication with 4-way stretch. Tights: drawcord on interior waistband and zipper closure at ankle. Compression Short: drawcord on interior waistband and 10" inseam.

SUBLIMATED PANEL ON FRONT BELOW KNEE ON LEGGING AND ABOVE KNEE ON SHORT. REST OF GARMENT IS DYED IN ONE OF THE FOLLOWING COLORS:

BLK GPH MDN RED RYL



STRAIGHTAWAY
COMPRESSION SINGLET
WITH TRACK LEGGING



STRAIGHTAWAY
LOOSE SHORT SLEEVE
WITH SPLIT SHORT



STRAIGHTAWAY
FITTED SINGLET WITH
COMPRESSION SHORT

OVERSIZED SURCHARGE +\$5 PER SIZE | ADDITIONAL LENGTH OPTIONS FOUND ON PAGE 61



STOCK RUNNING

STOCK PACE SINGLET

ADULT: SM-2XL, OVERSIZE 3XL

YOUTH: YXS-YXL

STYLE	SIZE	PACKAGE*	PRICE
UTJ200M (M)	SM-2XL	BLANK	\$49.00
		1-COLOR SCREEN	\$53.00
		2-COLOR SCREEN	\$58.00
UTJ200Y (Y)	YXS-YXL	BLANK	\$44.00

Smooth, lightweight knit fabric for superior performance (main body from prime time top). Singlets: Athletic racerback design. New fitted sizing composition will accommodate a wide variety of body types. Team Gear Color blocking with contrasting inserts.

*PACKAGE INCLUDES TEAM NAME/LOGO ONLY



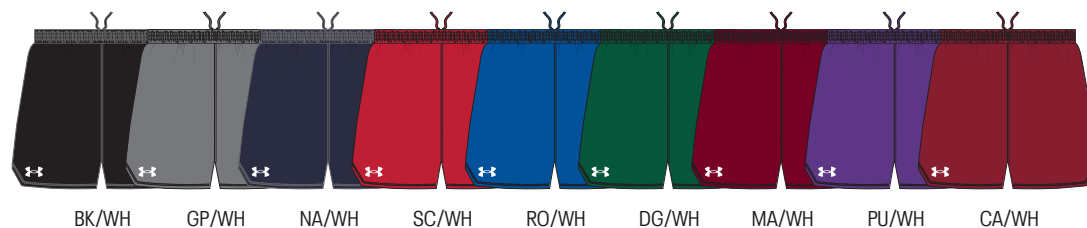
STOCK PACE SPLIT SHORT

ADULT: SM-2XL, OVERSIZE 3XL

STYLE	SIZE	PACKAGE*	PRICE
UTS605M (M)	SM-2XL	BLANK	\$49.00
		1-COLOR SCREEN	\$53.00
		2-COLOR SCREEN	\$58.00

Ultra lightweight and durable sublimated woven fabric. Fitted construction and updated angular hem with bartack security. Forward side seam placement to align uniform color blocking. Inner brief 2.5" Inseam.

*PACKAGE INCLUDES TEAM NAME/LOGO ONLY



OVERSIZED SURCHARGE +\$5 PER SIZE



STOCK RUNNING

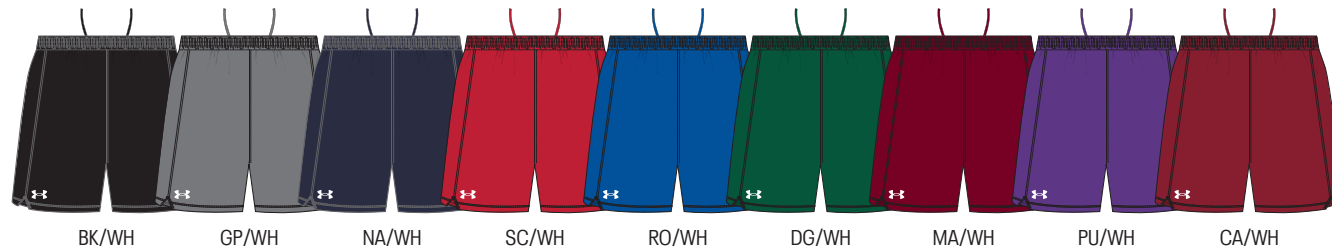
STOCK PACE 7" SHORT

ADULT: SM-2XL, OVERSIZE 3XL

STYLE	SIZE	PACKAGE*	PRICE
UTS600M (M)	SM-2XL	BLANK	\$49.00
		1-COLOR SCREEN	\$53.00
		2-COLOR SCREEN	\$58.00

Ultra Lightweight and durable woven fabric. Fitted construction and updated angular hem with bartack security. Forward side seam placement to align uniform color blocking. 7" inseam.

*PACKAGE INCLUDES TEAM NAME/LOGO ONLY



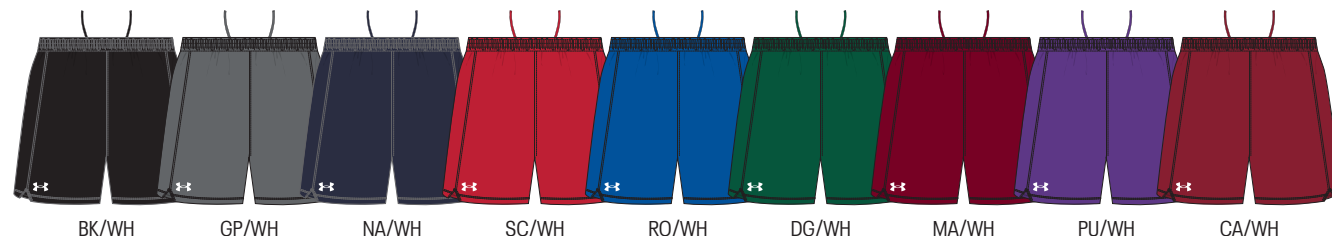
STOCK YOUTH PACE 5" SHORT

YOUTH: YXS-YXL

STYLE	SIZE	PACKAGE*	PRICE
UTS600Y (Y)	YXS-YXL	BLANK	\$44.00
		1-COLOR SCREEN	\$48.00
		2-COLOR SCREEN	\$53.00

Ultra Lightweight and durable woven fabric. Fitted construction and updated angular hem with bartack security. Forward side seam placement to align uniform color blocking. 5" inseam.

*PACKAGE INCLUDES TEAM NAME/LOGO ONLY



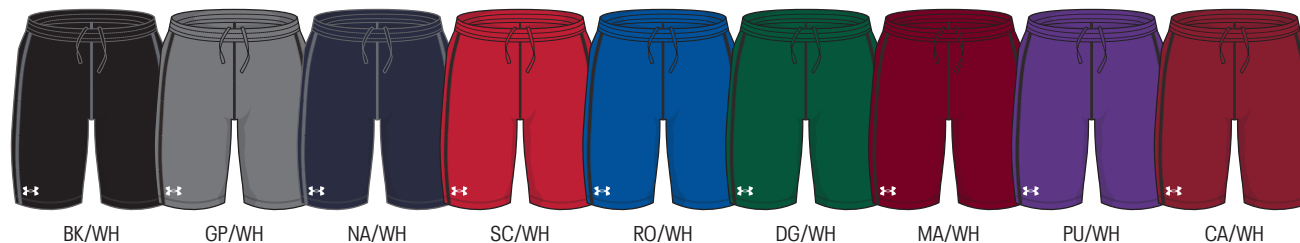
STOCK PACE 10" COMP SHORT

ADULT: SM-2XL, OVERSIZE 3XL

STYLE	SIZE	PACKAGE*	PRICE
UTS610M (M)	SM-2XL	BLANK	\$65.00
		1-COLOR SCREEN	\$68.50
		2-COLOR SCREEN	\$73.50

Signature HeatGear® fabrication with 4-way stretch. Covered Elastic waistband with internal drawcord. Forward side seam placement to align uniform color blocking. 10" Inseam.

*PACKAGE INCLUDES TEAM NAME/LOGO ONLY



OVERSIZED SURCHARGE +\$5 PER SIZE

001
BLK/WHIT410
MDN/WHIT**1387011**
MEN'S UA LAUNCH HALF TIGHT**\$50.00 | FITTED | *heatgear*****SIZES:** SM-3XL (3XL: 15% UPCHARGE)**FABRIC:** 77% POLYESTER, 23% ELASTANE**SHIP:** C/O

Super-soft & structured fabric delivers relentless coverage & comfort. Material wicks sweat & dries really fast. 4-way stretch material moves better in every direction. Exposed elastic waistband with interior drawcord. 2 interior drop-in pockets for gels, credit cards or keys. Reflective details for low-light runs. Inseam: 8".



6004043 MEN'S UA CHALLENGER TRAINING ¼ ZIP

\$60.00 | FITTED | 

SIZES: SM-2XL

FABRIC: 100% POLYESTER

SHIP: C/O

Textured knit fabric is light, tough & breathable. Material wicks sweat & dries really fast. Zip front makes for easy layering. Built-in thumbholes help keep sleeves in place.

BOYS: 6004080 | \$55.00 | YXS-Y3XL

B = BOYS OFFERING



6004044 MEN'S UA CHALLENGER TRAINING PANT

\$60.00 | FITTED | 

SIZES: SM-2XL

FABRIC: 90% POLYESTER, 10% ELASTANE

SHIP: C/O

Smooth, stretchy fabric is ultra-lightweight & lets you move. 4-way stretch material moves better in every direction. Material wicks sweat & dries really fast. Encased elastic waistband with internal drawcord. Open hand pockets. Ankle zips for easy on & off even over cleats.

BOYS: 6004081 | \$55.00 | YXS-Y3XL

B = BOYS OFFERING





1383259 MEN'S UA COMMAND WARM-UP FZ

\$75.00 | REGULAR | heatgear

SIZES: SM-5XL, LGT-2XLT (3XL-5XL, TALLS: 15% UPCHARGE)

FABRIC: 100% POLYESTER

SHIP: C/O

It's French Terry you can actually work out in – same comfort, but stretchier, lighter & faster. Material wicks sweat & dries really fast. Secure, zip hand pockets. Binding at cuffs & bottom hem.

YOUTH: 1383847 | \$60.00 | YXS-YXL

Y = YOUTH OFFERING



1383261 MEN'S UA COMMAND WARM-UP PANT

\$75.00 | REGULAR | heatgear

SIZES: SM-5XL, LGT-2XLT (3XL-5XL, TALLS: 15% UPCHARGE)

FABRIC: 100% POLYESTER

SHIP: C/O

It's French Terry you can actually work out in – same comfort, but stretchier, lighter & faster. Material wicks sweat & dries really fast. Encased elastic waistband with internal drawcord. Open hand pockets. Ankle zips for easy on/off even over shoes or cleats. Inseam: 31".

YOUTH: 1383848 | \$60.00 | YXS-YXL

Y = YOUTH OFFERING





ARMOURFUSE RUNNING

Brilliant, vibrant team colors permanently fused directly into textiles. Limitless customization, all-inclusive pricing with exclusive UA designs and customized prints. 41 different colors and 18 prints available. 6 piece minimum order.





ARMOURFUSE RUNNING

ARMOURFUSE PRIMETIME SPEEDSUIT

ADULT: XS-2XL, OVERSIZE 3XL

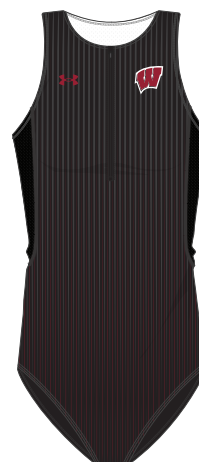
STYLE	SIZE	PRICE
UJTUTCW (W)	XS-2XL	\$139.00

Smooth, powerful knit fabric for superior performance. UA engineered mesh with Microthread technology delivers true breathability in a light, durable, fast-drying fabric. Center-front zipper for easy on-off performance. Lined interior gusset. 2-ply lower body.



ARCH

NEW DESIGN FIRST SHIP: 6/1/2025



LANE BLUR

NEW DESIGN FIRST SHIP: 6/1/2025



RACER

NEW DESIGN FIRST SHIP: 6/1/2025

SPEEDSUIT STYLES CONTINUE ON FOLLOWING PAGE

OVERSIZED SURCHARGE +\$5 PER SIZE | ADDITIONAL LENGTH OPTIONS FOUND ON PAGE 61

AF ARMOURFUSE® UNIFORMS | ORDERING INFORMATION AND CUSTOMER SERVICE: 1-888-871-0990 | www.underarmourteamuniforms.com | FILL-IN LIFECYCLE TIMING FOUND ON PAGE 63. DECORATION OPTIONS AND ORDERING INFORMATION ARE AVAILABLE ON PAGES 57-63.



ARMOURFUSE RUNNING

SPEEDSUIT STYLES CONTINUED FROM PREVIOUS PAGE

ARMOURFUSE PRIMETIME SPEEDSUIT

ADULT: XS-2XL, OVERSIZE 3XL

STYLE	SIZE	PRICE
UJTUTCW (W)	XS-2XL	\$139.00

Smooth, powerful knit fabric for superior performance. UA engineered mesh with Microthread technology delivers true breathability in a light, durable, fast-drying fabric. Center-front zipper for easy on-off performance. Lined interior gusset. 2-ply lower body.



SUPER SOFT



OVERSIZED SURCHARGE +\$5 PER SIZE | ADDITIONAL LENGTH OPTIONS FOUND ON PAGE 61

ARMOURFUSE UNIFORMS | ORDERING INFORMATION AND CUSTOMER SERVICE: 1-888-871-0990 | www.underarmourteamuniforms.com | FILL-IN LIFECYCLE TIMING FOUND ON PAGE 63. DECORATION OPTIONS AND ORDERING INFORMATION ARE AVAILABLE ON PAGES 57-63.



ARMOURFUSE PRIMETIME SPEED TANK

ADULT: XS-2XL, OVERSIZE 3XL

STYLE	SIZE	PRICE
UJTIC4W (W)	XS-2XL	\$87.50

Smooth, lightweight knit fabric for superior performance. Designed to deliver true breathability with a light, durable, fast-drying fabric. Compressive, distraction-free fit. Athletic racerback design unlocks mobility.



ARMOURFUSE COMPRESSION BOTTOMS 2.0

ADULT: LEGGING: XS-3XL, OVERSIZE 3XL
SHORT: SM-3XL, OVERSIZE 3XL

TRACK LEGGING 2.0	SIZE	PRICE
UJTLC2W (W)	XS-2XL	\$99.00

Armour 2.0 - Tricot - 7.5 oz. Updated fit and design lines, signature heatgear fabrication with 4-way stretch. Distractionless seaming with zipper at leg opening, drawcord on interior waistband. Inseam: 27.75".

COMPRESSION SHORT 2.0	SIZE	PRICE
UJTSC2W (W)	SM-2XL	\$82.00

Armour 2.0 - Tricot - 7.5 oz. Updated fit and design lines, signature heatgear fabrication with 4-way stretch. Inseam: 4".

IF YOUR TEAM CHOOSES ANY OF THE UA LANE DESIGNS 1-7, WE RECOMMEND SOLID-COLORED COMPRESSION BOTTOMS.

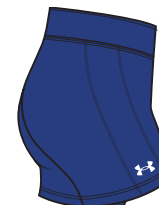
BLK GPH MDN RED RYL



ARCH

NEW DESIGN FIRST SHIP: 6/1/2025

SHOWN WITH
COMPRESSION SHORT 2.0



LANE BLUR

NEW DESIGN FIRST SHIP: 6/1/2025

SHOWN WITH
COMPRESSION SHORT 2.0



RACER

NEW DESIGN FIRST SHIP: 6/1/2025

SHOWN WITH
TRACK LEGGING 2.0

SPEED STYLES CONTINUE ON FOLLOWING PAGE

OVERSIZED SURCHARGE +\$5 PER SIZE | ADDITIONAL LENGTH OPTIONS FOUND ON PAGE 61



SPEED STYLES CONTINUED FROM PREVIOUS PAGE

ARMOURFUSE PRIMETIME SPEED TANK

ADULT: XS-2XL, OVERSIZE 3XL

STYLE	SIZE	PRICE
UJTIC4W (W)	XS-2XL	\$87.50

Smooth, lightweight knit fabric for superior performance. Designed to deliver true breathability with a light, durable, fast-drying fabric. Compressive, distraction-free fit. Athletic racerback design unlocks mobility.

ARMOURFUSE COMPRESSION BOTTOMS

ADULT: XS-2XL, OVERSIZE 3XL

MID-RISE BRIEF	SIZE	PRICE
UITS72W (W)	XS-2XL	\$53.00

TRACK LEGGING*	SIZE	PRICE
UJTLC1W (W)	XS-2XL	\$99.00

COMPRESSION SHORT*	SIZE	PRICE
UJTSC1W (W)	XS-2XL	\$83.00

FIELD SHORT	SIZE	PRICE
UITSB1W (W)	XS-2XL	\$92.50

*LAST SEASON OFFERED

Compression bottoms offered in our signature Heatgear fabrication with 4-way stretch. Compression Short: 4" inseam, Field Short: 8".

IF YOUR TEAM CHOOSES ANY OF THE UA LANE 1-7 DESIGNS, WE RECOMMEND SOLID-COLORED OR TWO-COLORED COMPRESSION BOTTOMS. THESE ARE THE FIRST TWO OPTIONS IN THE UNIFORM BUILDER.

SUBLIMATED PANEL ON FRONT BELOW KNEE ON LEGGING AND ABOVE KNEE ON SHORT. REST OF GARMENT IS DYED IN ONE OF THE FOLLOWING COLORS:

BLK GPH MDN RED RYL



UA LANE 1
SHOWN WITH
MID-RISE BRIEF

UA LANE 2
SHOWN WITH
MID-RISE BRIEF

UA LANE 3
SHOWN WITH
MID-RISE BRIEF

UA LANE 4
SHOWN WITH
COMPRESSION SHORT

UA LANE 5
SHOWN WITH
COMPRESSION SHORT

UA LANE 6
SHOWN WITH
TRACK LEGGING

UA LANE 7
SHOWN WITH
TRACK LEGGING

OVERSIZED SURCHARGE +\$5 PER SIZE | ADDITIONAL LENGTH OPTIONS FOUND ON PAGE 61



ARMOURFUSE RUNNING

DISTANCE

ARMOURFUSE PRIMETIME DISTANCE SINGLET

ADULT: XS-2XL, OVERSIZE 3XL

STYLE	SIZE	PRICE
UJTF7W (W)	XS-2XL	\$96.00

Smooth, powerful knit fabric for superior performance. Designed to deliver true breathability with a light, durable, fast-drying fabric. Mesh backside for added breathability. Clean silhouette designed to eliminate distractions during competition. Athletic racerback design unlocks mobility.

ARMOURFUSE LOOSE BOTTOMS

ADULT: XS-2XL, OVERSIZE 3XL

SPLIT SHORT 2.0	SIZE	PRICE
UJTSW3W (W)	XS-2XL	\$96.00

Updated streamlined fit. Ultra lightweight and durable sublimated woven fabric with internal liner. 2.5" inseam.

4" SHORT 2.0	SIZE	PRICE
UJTSW2W (W)	XS-2XL	\$101.00

Updated streamlined fit. Ultra lightweight and durable sublimated woven fabric. 4" inseam.

ARMOURFUSE COMPRESSION BOTTOMS

ADULT: XS-2XL, OVERSIZE 3XL

MID-RISE BRIEF	SIZE	PRICE
UJTS72W (W)	XS-2XL	\$53.00

TRACK LEGGING*	SIZE	PRICE
UJTL1W (W)	XS-2XL	\$99.00

COMPRESSION SHORT*	SIZE	PRICE
UJTS1W (W)	XS-2XL	\$83.00

FIELD SHORT	SIZE	PRICE
UJTSB1W (W)	XS-2XL	\$92.50

*LAST SEASON OFFERED

Compression bottoms offered in our signature Heatgear fabrication with 4-way stretch. Compression Short: 4" inseam, Field Short: 8".

IF YOUR TEAM CHOOSES ANY OF THE UA LANE 1-7 DESIGNS, WE RECOMMEND SOLID-COLORED OR TWO-COLORED COMPRESSION BOTTOMS. THESE ARE THE FIRST TWO OPTIONS IN THE UNIFORM BUILDER.

SUBLIMATED PANEL ON FRONT BELOW KNEE ON LEGGING AND ABOVE KNEE ON SHORT. REST OF GARMENT IS DYED IN ONE OF THE FOLLOWING COLORS:

BLK GPH MDN RED RYL



OVERSIZED SURCHARGE +\$5 PER SIZE | ADDITIONAL LENGTH OPTIONS FOUND ON PAGE 61



ARMOURFUSE RUNNING

FIELD

ARMOURFUSE PRIMETIME FIELD SHORT SLEEVE

ADULT: XS-2XL, OVERSIZE 3XL

STYLE	SIZE	PRICE
UJTL7W (W)	XS-2XL	\$96.00

Smooth, lightweight knit fabric for superior performance. Designed to deliver true breathability with a light, durable, fast-drying fabric. Mesh backside for added breathability. Raglan sleeves for maximum mobility. Shaped hem for additional coverage. Clean silhouette designed to eliminate distractions during competition.

ARMOURFUSE LOOSE BOTTOMS

ADULT: XS-2XL, OVERSIZE 3XL

SPLIT SHORT 2.0	SIZE	PRICE
UJTSW3W (W)	XS-2XL	\$96.00

Updated streamlined fit. Ultra lightweight and durable sublimated woven fabric with internal liner. 2.5" inseam.

4" SHORT 2.0	SIZE	PRICE
UJTSW2W (W)	XS-2XL	\$101.00

Updated streamlined fit. Ultra lightweight and durable sublimated woven fabric. 4" inseam.

ARMOURFUSE COMPRESSION BOTTOMS

ADULT: XS-2XL, OVERSIZE 3XL

MID-RISE BRIEF	SIZE	PRICE
UJTS72W (W)	XS-2XL	\$53.00

TRACK LEGGING*	SIZE	PRICE
UJTLCTW (W)	XS-2XL	\$99.00

COMPRESSION SHORT*	SIZE	PRICE
UJTSCTW (W)	XS-2XL	\$83.00

FIELD SHORT	SIZE	PRICE
UJTSBTW (W)	XS-2XL	\$92.50

*LAST SEASON OFFERED

Compression bottoms offered in our signature Heatgear fabrication with 4-way stretch.

Compression Short: 4" inseam, Field Short: 8".

IF YOUR TEAM CHOOSES ANY OF THE UA LANE 1-7 DESIGNS, WE RECOMMEND SOLID-COLORED OR TWO-COLORED COMPRESSION BOTTOMS. THESE ARE THE FIRST TWO OPTIONS IN THE UNIFORM BUILDER.

SUBLIMATED PANEL ON FRONT BELOW KNEE ON LEGGING AND ABOVE KNEE ON SHORT. REST OF GARMENT IS DYED IN ONE OF THE FOLLOWING COLORS:

BLK GPH MDN RED RYL



OVERSIZED SURCHARGE +\$5 PER SIZE | ADDITIONAL LENGTH OPTIONS FOUND ON PAGE 61



ARMOURFUSE PRIMETIME PRCTICE CROP

ADULT: XS-2XL, OVERSIZE 3XL

STYLE	SIZE	PRICE
UJTHIW (W)	XS-2XL	\$72.00

Smooth, lightweight knit fabric for superior performance. Designed to deliver true breathability with a light, durable, fast-drying fabric. Compressive, distraction-free fit. Athletic racerback design unlocks mobility. This style is intended for practice.

ARMOURFUSE LOOSE BOTTOMS

ADULT: XS-2XL, OVERSIZE 3XL

SPLIT SHORT 2.0	SIZE	PRICE
UJTSW3W (W)	XS-2XL	\$96.00

Updated streamlined fit. Ultra lightweight and durable sublimated woven fabric with internal liner. 2.5" inseam.

4" SHORT 2.0	SIZE	PRICE
UJTSW2W (W)	XS-2XL	\$101.00

Updated streamlined fit. Ultra lightweight and durable sublimated woven fabric. 4" inseam.

ARMOURFUSE COMPRESSION BOTTOMS

ADULT: XS-2XL, OVERSIZE 3XL

MID-RISE BRIEF	SIZE	PRICE
UJTS72W (W)	XS-2XL	\$53.00

TRACK LEGGING*	SIZE	PRICE
UJTLCTW (W)	XS-2XL	\$99.00

COMPRESSION SHORT*	SIZE	PRICE
UJTSC1W (W)	XS-2XL	\$83.00

FIELD SHORT	SIZE	PRICE
UJTSB1W (W)	XS-2XL	\$92.50

*LAST SEASON OFFERED

Compression bottoms offered in our signature Heatgear fabrication with 4-way stretch. Compression Short: 4" inseam, Field Short: 8".

IF YOUR TEAM CHOOSES ANY OF THE UA LANE 1-7 DESIGNS, WE RECOMMEND SOLID-COLORED OR TWO-COLORED COMPRESSION BOTTOMS. THESE ARE THE FIRST TWO OPTIONS IN THE UNIFORM BUILDER.

SUBLIMATED PANEL ON FRONT BELOW KNEE ON LEGGING AND ABOVE KNEE ON SHORT. REST OF GARMENT IS DYED IN ONE OF THE FOLLOWING COLORS:

BLK GPH MDN RED RYL



UA LANE 1
SHOWN WITH
MID-RISE BRIEF

UA LANE 2
SHOWN WITH
SPLIT SHORT 2.0

UA LANE 3
SHOWN WITH
SPLIT SHORT 2.0

UA LANE 4
SHOWN WITH
MID-RISE BRIEF

UA LANE 5
SHOWN WITH
MID-RISE BRIEF

UA LANE 6
SHOWN WITH
SPLIT SHORT 2.0

UA LANE 7
SHOWN WITH
MID-RISE BRIEF

OVERSIZED SURCHARGE +\$5 PER SIZE | ADDITIONAL LENGTH OPTIONS FOUND ON PAGE 61



RUNNING

MEN'S UNIFORMS

MEN'S APPAREL

WOMEN'S UNIFORMS

WOMEN'S APPAREL

FOOTWEAR

ARMOURFUSE RUNNING





ARMOURFUSE RUNNING

ARMOURFUSE SHOWTIME 2 TOPS

LAST SEASON OFFERED

ADULT: XS-2XL, OVERSIZE 3XL

YOUTH: YSM-YXL

COMP. SINGLET	SIZE	PRICE
UJTJCSW (W)	XS-2XL	\$85.00

FITTED SINGLET	SIZE	PRICE
UJTJFSW (W)	XS-2XL	\$85.00
UJTJFSY (Y)	YSM-YXL	\$69.00

Signature lightweight 4-way stretch knit HeatGear® fabrication with maximum breathability.

LOOSE SHORTSLEEVE	SIZE	PRICE
UJTJLSW (W)	XS-2XL	\$85.00

Sublimated 4-way stretch flat knit front with stretch mesh back.



ARMOURFUSE COMPRESSION BOTTOMS 2.0

ADULT: LEGGING: XS-3XL, OVERSIZE 3XL

SHORT: SM-3XL, OVERSIZE 3XL

TRACK LEGGING 2.0	SIZE	PRICE
UJTLC2W (W)	XS-2XL	\$99.00

Armour 2.0 - Tricot - 7.5 oz. Updated fit and design lines, signature heatgear fabrication with 4-way stretch. Distractionless seaming with zipper at leg opening, drawcord on interior waistband. Inseam: 27.75".

COMPRESSION SHORT 2.0	SIZE	PRICE
UJTSC2W (W)	SM-2XL	\$82.00

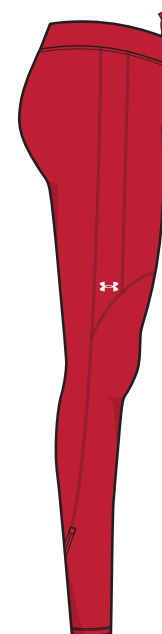
Armour 2.0 - Tricot - 7oz. Updated fit and design lines, signature heatgear fabrication with 4-way stretch. Inseam: 4".

IF YOUR TEAM CHOOSES ANY OF THE UA LANE DESIGNS 1-7, WE RECOMMEND SOLID-COLORED COMPRESSION BOTTOMS.

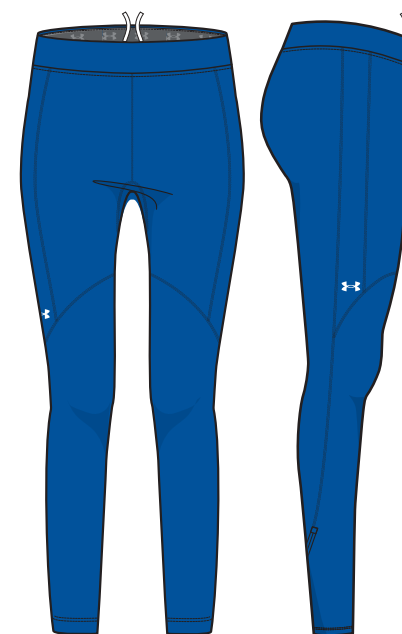
BLK GPH MDN RED RYL



ACCELERATE
COMPRESSION SINGLET
WITH COMPRESSION SHORT 2.0



BOLT
COMPRESSION SINGLET
WITH TRACK LEGGING 2.0



STRAIGHTAWAY
COMPRESSION SINGLET
WITH TRACK LEGGING 2.0

OVERSIZED SURCHARGE +\$5 PER SIZE | ADDITIONAL LENGTH OPTIONS FOUND ON PAGE 61



ARMOURFUSE RUNNING

ARMOURFUSE SHOWTIME 2 TOPS

LAST SEASON OFFERED

ADULT: XS-2XL, OVERSIZE 3XL

YOUTH: YSM-YXL

COMP. SINGLET	SIZE	PRICE
UJTICSW (W)	XS-2XL	\$85.00
FITTED SINGLET		
UJTJFSW (W)	XS-2XL	\$85.00
UJTJFSY (Y)	YSM-YXL	\$69.00

Signature lightweight 4-way stretch knit HeatGear® fabrication with maximum breathability.

LOOSE SHORT SLEEVE	SIZE	PRICE
UJTJLSW (W)	XS-2XL	\$85.00

Sublimated 4-way stretch flat knit front with stretch mesh back.

ARMOURFUSE LOOSE BOTTOMS

ADULT: XS-2XL, OVERSIZE 3XL

YOUTH: YXS-YXL

SPLIT SHORT	SIZE	PRICE
UJTSSPW (W)	XS-2XL	\$72.50
UJTSSPY (Y)	YXS-YXL	\$67.00

Ultra lightweight and durable sublimated woven fabric with internal liner. 2.5" inseam.

4" SHORT	SIZE	PRICE
UJTS2W (W)	XS-2XL	\$83.00

Ultra lightweight and durable sublimated woven fabric. +1, -1" inseam length options available. 4" inseam.

ARMOURFUSE COMPRESSION BOTTOMS

LAST SEASON OFFERED

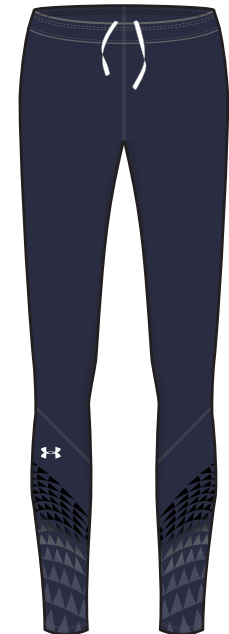
ADULT: XS-2XL, OVERSIZE 3XL

TRACK LEGGING	SIZE	PRICE
UJTLC1W (W)	XS-2XL	\$99.00
COMPRESSION SHORT		
UJTSC1W (W)	XS-2XL	\$83.00

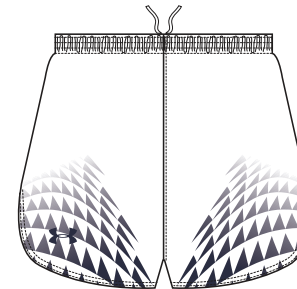
Compression bottoms offered in our signature Heatgear fabrication with 4-way stretch. Legging: drawcord at waist and zipper closure Compression Short: 4" inseam.

SUBLIMATED PANEL ON FRONT BELOW KNEE ON LEGGING AND ABOVE KNEE ON SHORT. REST OF GARMENT IS DYED IN ONE OF THE FOLLOWING COLORS:

BLK GPH MDN RED RYL



ACCELERATE
COMPRESSION SINGLET
WITH TRACK LEGGING



ACCELERATE
LOOSE SHORT SLEEVE
WITH SPLIT SHORT



ACCELERATE
FITTED SINGLET WITH
COMPRESSION SHORT

OVERSIZED SURCHARGE +\$5 PER SIZE | ADDITIONAL LENGTH OPTIONS FOUND ON PAGE 61



ARMOURFUSE RUNNING

ARMOURFUSE SHOWTIME 2 TOPS

LAST SEASON OFFERED

ADULT: XS-2XL, OVERSIZE 3XL

YOUTH: YSM-YXL

COMP. SINGLET	SIZE	PRICE
UJTJCSW (W)	XS-2XL	\$85.00
FITTED SINGLET		
UJTJFSW (W)	XS-2XL	\$85.00
UJTJFSY (Y)	YSM-YXL	\$69.00

Signature lightweight 4-way stretch knit HeatGear® fabrication with maximum breathability.

LOOSE SHORT SLEEVE	SIZE	PRICE
UJTJLSW (W)	XS-2XL	\$85.00

Sublimated 4-way stretch flat knit front with stretch mesh back.

ARMOURFUSE LOOSE BOTTOMS

ADULT: XS-2XL, OVERSIZE 3XL

YOUTH: YXS-YXL

SPLIT SHORT	SIZE	PRICE
UJTSSPW (W)	XS-2XL	\$72.50
UJTSSPY (Y)	YXS-YXL	\$67.00

Ultra lightweight and durable sublimated woven fabric with internal liner. 2.5" inseam.

4" SHORT	SIZE	PRICE
UJTS2W (W)	XS-2XL	\$83.00

Ultra lightweight and durable sublimated woven fabric. +1, -1" inseam length options available. 4" inseam.

ARMOURFUSE COMPRESSION BOTTOMS

LAST SEASON OFFERED

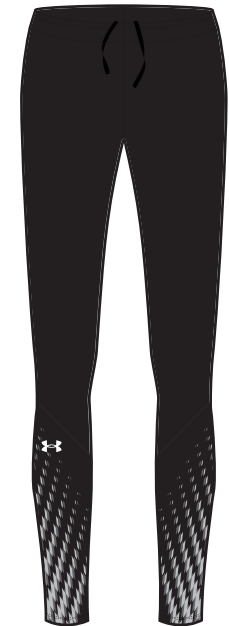
ADULT: XS-2XL, OVERSIZE 3XL

TRACK LEGGING	SIZE	PRICE
UJTLC1W (W)	XS-2XL	\$99.00
COMPRESSION SHORT		
UJTSC1W (W)	XS-2XL	\$83.00

Compression bottoms offered in our signature Heatgear fabrication with 4-way stretch. Legging: drawcord at waist and zipper closure Compression Short: 4" inseam.

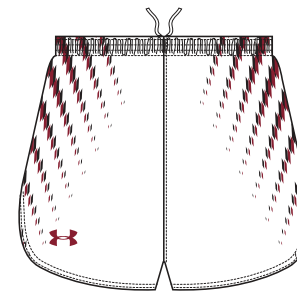
SUBLIMATED PANEL ON FRONT BELOW KNEE ON LEGGING AND ABOVE KNEE ON SHORT. REST OF GARMENT IS DYED IN ONE OF THE FOLLOWING COLORS:

BLK GPH MDN RED RYL



BOLT

COMPRESSION SINGLET WITH TRACK LEGGING



BOLT
LOOSE SHORT SLEEVE WITH SPLIT SHORT



BOLT
FITTED SINGLET WITH COMPRESSION SHORT

OVERSIZED SURCHARGE +\$5 PER SIZE | ADDITIONAL LENGTH OPTIONS FOUND ON PAGE 61



ARMOURFUSE RUNNING

ARMOURFUSE SHOWTIME 2 TOPS

LAST SEASON OFFERED

ADULT: XS-2XL, OVERSIZE 3XL

YOUTH: YSM-YXL

COMP. SINGLET	SIZE	PRICE
UJTICSW (W)	XS-2XL	\$85.00
FITTED SINGLET		
UJTJFSW (W)	XS-2XL	\$85.00
UJTJFSY (Y)	YSM-YXL	\$69.00

Signature lightweight 4-way stretch knit HeatGear® fabrication with maximum breathability.

LOOSE SHORT SLEEVE	SIZE	PRICE
UJTJLSW (W)	XS-2XL	\$85.00

Sublimated 4-way stretch flat knit front with stretch mesh back.

ARMOURFUSE LOOSE BOTTOMS

ADULT: XS-2XL, OVERSIZE 3XL

YOUTH: YXS-YXL

SPLIT SHORT	SIZE	PRICE
UJTSSPW (W)	XS-2XL	\$72.50
UJTSSPY (Y)	YXS-YXL	\$67.00

Ultra lightweight and durable sublimated woven fabric with internal liner. 2.5" inseam.

4" SHORT	SIZE	PRICE
UJTS2W (W)	XS-2XL	\$83.00

Ultra lightweight and durable sublimated woven fabric. +1, -1" inseam length options available. 4" inseam.

ARMOURFUSE COMPRESSION BOTTOMS

LAST SEASON OFFERED

ADULT: XS-2XL, OVERSIZE 3XL

TRACK LEGGING	SIZE	PRICE
UJTLC1W (W)	XS-2XL	\$99.00
COMPRESSION SHORT		
UJTSC1W (W)	XS-2XL	\$83.00

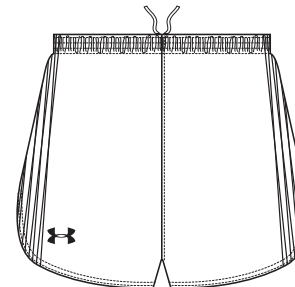
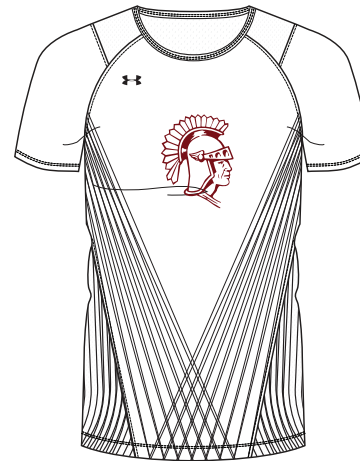
Compression bottoms offered in our signature Heatgear fabrication with 4-way stretch. Legging: drawcord at waist and zipper closure Compression Short: 4" inseam.

SUBLIMATED PANEL ON FRONT BELOW KNEE ON LEGGING AND ABOVE KNEE ON SHORT. REST OF GARMENT IS DYED IN ONE OF THE FOLLOWING COLORS:

BLK GPH MDN RED RYL



STRAIGHTAWAY
COMPRESSION SINGLET
WITH TRACK LEGGING



STRAIGHTAWAY
LOOSE SHORT SLEEVE
WITH SPLIT SHORT



STRAIGHTAWAY
FITTED SINGLET WITH
COMPRESSION SHORT

OVERSIZED SURCHARGE +\$5 PER SIZE | ADDITIONAL LENGTH OPTIONS FOUND ON PAGE 61



STOCK RUNNING

STOCK PACE SINGLET

ADULT: XS-2XL, OVERSIZE 3XL

YOUTH: YXS-YXL

STYLE	SIZE	PACKAGE*	PRICE
UTJ200W (W)	SM-2XL	BLANK	\$49.00
		1-COLOR SCREEN	\$53.00
		2-COLOR SCREEN	\$58.00
UTJ200Y (Y)	YXS-YXL	BLANK	\$44.00

Smooth, lightweight knit fabric for superior performance (main body from prime time top). Singlets: Athletic racerback design. New fitted sizing composition will accommodate a wide variety of body types. Team Gear Color blocking with contrasting inserts.

*PACKAGE INCLUDES TEAM NAME/LOGO ONLY



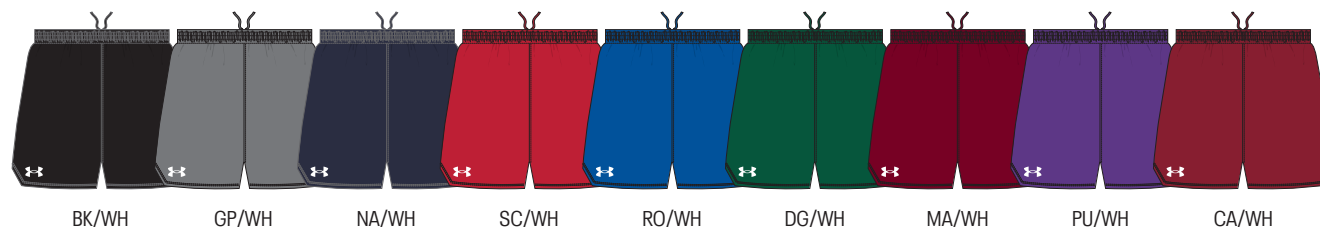
STOCK PACE SPLIT SHORT

ADULT: XS-2XL

STYLE	SIZE	PACKAGE*	PRICE
UTS605W (W)	XS-2XL	BLANK	\$49.00
		1-COLOR SCREEN	\$53.00
		2-COLOR SCREEN	\$58.00

Ultra lightweight and durable sublimated woven fabric. Fitted construction and updated angular hem with bartack security. Forward side seam placement to align uniform color blocking. Inner brief 2.5" Inseam.

*PACKAGE INCLUDES TEAM NAME/LOGO ONLY



OVERSIZED SURCHARGE +\$5 PER SIZE



STOCK RUNNING

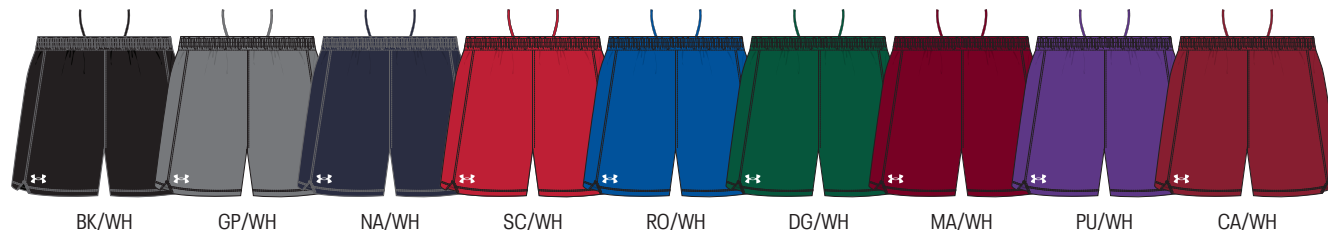
STOCK PACE 4" SHORT

ADULT: XS-2XL

STYLE	SIZE	PACKAGE*	PRICE
UTS600W (W)	XS-2XL	BLANK	\$49.00
		1-COLOR SCREEN	\$53.00
		2-COLOR SCREEN	\$58.00

Ultra Lightweight and durable woven fabric. Fitted construction and updated angular hem with bartack security. Forward side seam placement to align uniform color blocking. 4" inseam.

*PACKAGE INCLUDES TEAM NAME/LOGO ONLY



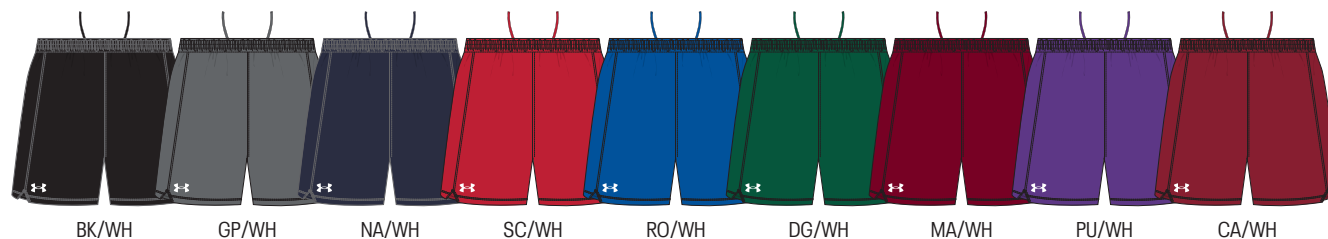
STOCK YOUTH PACE 5" SHORT

YOUTH: YXS-YXL

STYLE	SIZE	PACKAGE*	PRICE
UTS600Y (Y)	YXS-YXL	BLANK	\$44.00
		1-COLOR SCREEN	\$48.00
		2-COLOR SCREEN	\$53.00

Ultra Lightweight and durable woven fabric. Fitted construction and updated angular hem with bartack security. Forward side seam placement to align uniform color blocking. 5" inseam.

*PACKAGE INCLUDES TEAM NAME/LOGO ONLY



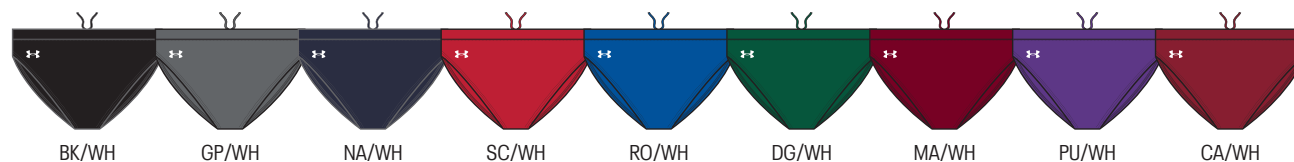
STOCK PACE BRIEF

ADULT: XS-2XL

STYLE	SIZE	PACKAGE*	PRICE
UTS64W (W)	XS-2XL	BLANK	\$33.00
		1-COLOR SCREEN	\$37.50
		2-COLOR SCREEN	\$42.50

Compression brief with covered elastic waist band with built in drawcord. Lined interior gusset. Updated garment construction to match her style.

*PACKAGE INCLUDES TEAM NAME/LOGO ONLY



OVERSIZED SURCHARGE +\$5 PER SIZE



1389623 WOMEN'S UA TEAM SHORTY 4"

\$33.00 | COMPRESSION | *heatgear*

SIZES: XS-2XL

FABRIC: 87% POLYESTER, 13% ELASTANE

SHIP: C/O

Super-light HeatGear® fabric delivers superior coverage without weighing you down. Material wicks sweat & dries really fast. 4-way stretch construction moves better in every direction. Anti-odor technology prevents the growth of odor-causing microbes. Removed front seam for maximum comfort. Updated waistband elastic with softer hand-feel. Inseam: 4". Heatseal Logo.



YOUTH: 6001943 | \$25.00 | YSM-YLG

Y = YOUTH OFFERING

1389624 WOMEN'S UA TEAM SHORTY 3"

\$33.00 | COMPRESSION | *heatgear*

SIZES: XS-2XL

FABRIC: 87% POLYESTER, 13% ELASTANE

SHIP: C/O

Super-light HeatGear® fabric delivers superior coverage without weighing you down. Material wicks sweat & dries really fast. 4-way stretch construction moves better in every direction. Anti-odor technology prevents the growth of odor-causing microbes. Removed front seam for maximum comfort. Updated waistband elastic with softer hand-feel. Inseam: 3". Heatseal Logo.





6004073
WOMEN'S UA CHALLENGER
TRAINING PANT

\$60.00 | **FITTED** | **heatgear**

SIZES: XS-2XL

FABRIC: 87% POLYESTER, 13% ELASTANE

SHIP: C/O

Smooth, stretchy fabric is ultra-lightweight & lets you move. 4-way stretch material moves better in every direction. Material wicks sweat & dries really fast. Encased elastic waistband with internal drawcord. Open hand pockets. Ankle zips for easy on & off even over cleats.



001
BLK/WHT

025
CSR/WHT



SPRINTS

3027975 UA SHAKEDOWN ELITE 3.0 LD

\$160.00

SIZES: 3.5-13, 14, 15

SHIP: C/O

3K-10K

Lightweight and semi-translucent woven upper for a seamless and breathable fit. Premium TPE supercritical sock liner for step-in comfort. Lightweight supercritical midsole foam for responsive energy return. Full-length carbon infused plate for propulsion and spike receptacle. Additional supercritical foam from the midfoot to the heel below the plate for extra cushion over longer events.



100
WHT/MSV/RACER RED

3022516 UA SPRINT PRO 3

\$120.00

SIZES: 3.5-13

SHIP: C/O

POWER SPRINTS

EMBROIDERED UPPER: Every yarn considered. UA's embroidery technology creates a lightweight, comfortable upper that provides superior airflow and minimal, tuned support. **STRUCTURAL FILM:** A lightweight film in the forefoot that provides additional strength to maximize containment efficiency and power in propulsion. **DIE-CUT SOCKLINER:** Made of high-rebound foam for added cushioning and resiliency. **THIN SYNTHETIC PU MICROFIBER:** Microfiber to moderate between plate and upper. **HIGH MODULUS MOLDED PEBA:** Full-length LX90 plate for light weight, high strength, and resiliency. Built with 8 perimeter-focused pins for a smooth transition and toe-off.



003
BLK/MGD



SPRINTS

6012387 UA SHAKEDOWN ELITE 3.5 MD

\$150.00

SIZES: 3.5-13, 14, 15

SHIP: C/O

800M-5K

Lightweight, breathable, semi-translucent woven upper helps keep your feet cool in even the hottest temps. Midsole geometry gets you up on your toes quicker for more momentum & faster turnover. Full-length plate provides rigidity & a solid platform for energized liftoffs. Increased midsole foam in the forefoot compresses & springs back for added lift & energy return. 6-pin spike design in forefoot for enhanced grip on the track. Weight 5.5 oz.



100
WHT/MSV/RACER RED

3021831 UA HOVR SMOKERIDER

\$100.00

SIZES: 3.5-13

SHIP: C/O

FINESSE SPRINTS

EMBROIDERED UPPER: Every yarn considered. UA's embroidery technology creates a lightweight and comfortable upper that provides superior air-flow and minimal tuned support. **STRUCTURAL FILM:** A lightweight film in the forefoot that provides additional strength to maximize containment efficiency and power in propulsion. **DIE-CUT SOCKLINER:** Made of high-rebound foam for added cushioning and resiliency. **SYNTHETIC PU MIDSOLE:** Thin synthetic microfiber PU provides moderation between upper and plate. **SHARKSKIN TRACTION:** Lightweight molded element in the heel enhances traction off the blocks. **HIGH MODULUS MOLDED PEBA:** 3/4 EX9200 plate for lightweight, high-strength, and resilience. Built with 6 pins that are primarily perimeter focused for smooth transition to toe-off.



004
BLK/MGD

**6006141**
UA KICK DISTANCE 5**\$70.00****SIZES:** 3.5-13, 14, 15**SHIP:** C/O**DISTANCE**

Engineered mesh upper is lightweight & breathable with stretch & structure where you need it. EVA sockliner provides extra cushioning & rebound. One-piece EVA foam midsole turns cushioned landings into explosive takeoffs. $\frac{3}{4}$ nylon plate provides a push of power to help maintain speed. 4-pin track spike outsole delivers enhanced grip & traction. $\frac{1}{4}$ " pyramid spikes. Weight: 5 oz.

001
BLK/RACER RED/WHT**6006142**
UA KICK SPRINT 5**\$70.00****SIZES:** 3.5-13, 14, 15**SHIP:** C/O**SPRINTS**

Engineered mesh upper is lightweight & breathable with stretch & structure where you need it. EVA sockliner provides extra cushioning & rebound. One-piece EVA foam midsole turns cushioned landings into explosive takeoffs. Full length nylon plate is strong, flexible & lightweight for explosive propulsion. Removable 6-pin spike outsole gives you perfect traction to accelerate & maintain top speeds. $\frac{1}{4}$ " pyramid spikes. Weight: 4.7 oz.

001
BLK/RACER RED/WHT



3021862 UA CENTRIC GRIP

\$90.00

SIZES: 6.5-13, 14, 15, 16, 17, 18

SHIP: C/O

SHOT, DISCUSS

EMBROIDERED UPPER: Every yarn considered. UA's embroidery technology creates a lightweight, comfortable upper that provides superior airflow and minimal, tuned support. **UA HOVR CUSHIONING SYSTEM:** Soft UA HOVR™ foam combined with dynamic mesh Energy Web creates an incredible zero gravity feel + energy return. **RUBBER TOE BUMPER:** Additional toe support for durability and protection. **PEBAX PLATE:** Structure and support in the midfoot for efficient foot-strike. **DURABLE RUBBER:** A textured, cupped outsole surrounds the foot for added stability and the optimal amount of grip for a smooth and powerful rotation.



003
BLK/MGD

3022517 UA HOVR SILENCER

\$110.00

SIZES: 6.5-13, 14, 15, 16, 17, 18

SHIP: C/O

JAVELIN

EMBROIDERED UPPER: Every yarn considered. UA's embroidery technology creates a lightweight, comfortable upper that provides superior airflow and minimal, tuned support. **3X POWER STRAP:** A 3-point midfoot strap that harnesses the midfoot and forefoot. **DIE-CUT SOCKLINER:** Made of high-rebound foam for added cushioning and resiliency. **UA HOVR CUSHIONING SYSTEM:** Soft UA HOVR™ foam combined with dynamic mesh Energy Web creates an incredible zero gravity feel + energy return. **PEBA MIDFOOT SHANK:** Structure and support in the midfoot for efficient foot-strike. **STRUCTURAL MIDSOLE RIM:** Additional support midsole that encapsulates the HOVR foam to keep the foot centered and provide greater durability. **HIGH MODULUS MOLDED PEBA:** Full-length LX90 plate for light weight, high strength, and resiliency. Built with 10 perimeter-focused pins for a smooth transition and toe-off.



003
BLK/MGD



3022518 UA SKYLINE HJ

\$110.00

SIZES: 3.5-12, 13, 14

SHIP: C/O

HIGH JUMP

EMBROIDERED UPPER: Every yarn considered. UA's embroidery technology creates a lightweight, comfortable upper that provides superior airflow and minimal, tuned support. **3X POWER STRAP:** A 3 point midfoot strap. **Harness Forefoot and Midfoot.** **UA HOVR CUSHIONING SYSTEM:** Soft UA HOVR™ foam combined with dynamic mesh Energy Web creates an incredible zero gravity feel + energy return. **STRUCTURAL MIDSOLE RIM:** Additional support midsole that encapsulates the HOVR foam to the keep the foot centered and provide greater durability. **HIGH MODULUS MOLDED PEBA:** Full-length LX90 plate for light weight, high strength, and resiliency. Built with 11 perimeter-focused pins for a smooth transition and toe-off.



100
WHT/BLK/MGD



102
WHT/RACER RED/BLK

3021863 UA HOVR SKYLINE LJ

\$100.00

SIZES: 3.5-12, 13

SHIP: C/O

LONG JUMP, POLE VAULT

EMBROIDERED UPPER: Every yarn considered. UA's embroidery technology creates a lightweight, comfortable upper that provides superior airflow and minimal, tuned support. **3X POWER STRAP:** A 3 point midfoot strap. **Harness Forefoot and Midfoot.** **UA HOVR CUSHIONING SYSTEM:** Soft UA HOVR™ foam combined with dynamic mesh Energy Web creates an incredible zero gravity feel + energy return. **SHARKSKIN HEEL:** Molded lightweight-traction in the heel and midfoot, provides low profile traction for secure planting and smooth transition. **STRUCTURAL MIDSOLE RIM:** Additional support midsole that encapsulates the HOVR foam to the keep the foot centered and provide greater durability. **HIGH MODULUS MOLDED PEBA:** Full-length LX90 plate for light weight, high strength, and resiliency. Built with 7 perimeter-focused pins for a smooth transition and toe-off.



102
WHT/BLK/MGD



600
RACER RED/BLK/BLK



3021864 UA SKYLINE TJ/PV

\$100.00

SIZES: 3.5-12, 13

SHIP: C/O

TRIPLE JUMP, POLE VAULT

EMBROIDERED UPPER: Every yarn considered. UA's embroidery technology creates a lightweight, comfortable upper that provides superior airflow and minimal, tuned support. **3X POWER STRAP:** A 3 point midfoot strap. Harness Forefoot and Midfoot. **UA HOVR CUSHIONING SYSTEM:** Soft UA HOVR™ foam combined with dynamic mesh Energy Web creates an incredible zero gravity feel + energy return. **SHARKSKIN HEEL:** Molded lightweight-traction in the heel and midfoot, provides low profile traction for secure planting and smooth transition. **STRUCTURAL MIDSOLE RIM:** Additional support midsole that encapsulates the HOVR foam to the keep the foot centered and provide greater durability. **HIGH MODULUS MOLDED PEBA:** Full-length LX90 plate for light weight, high strength, and resiliency. Built with 7 perimeter-focused pins for a smooth transition and toe-off.



101
WHT/BLK/MGD



103
WHT/RACER RED/BLK



CROSS COUNTRY

3025462 UA BRIGADE XC LOW 2

\$70.00

SIZES: 5-12, 13

SHIP: C/O

CROSS COUNTRY

LIGHTWEIGHT & BREATHABLE: Mesh upper provides enhanced ventilation. **PEBAX™ PLATE:** Ultra strong, ultra-lightweight Pebax plate is strategically placed in the forefoot for explosive take-offs. **MICHELIN WILD GRIPPER OUTSOLE:** Rubber compound uses unique traction lugs for unmatched grip & traction on any terrain. **4 PIN:** Spike construction to keep you on your toes and provides the ultimate traction for rugged terrain.



001
BLK/HALO GRAY/
HALO GRAY

3025463 UA BRIGADE XC LOW 2 SPIKELESS

\$70.00

SIZES: 5-12, 13

SHIP: C/O

CROSS COUNTRY

LIGHTWEIGHT & BREATHABLE: Mesh upper provides enhanced ventilation. **PEBAX™ PLATE:** Ultra strong, ultra-lightweight Pebax plate is strategically placed in the forefoot for explosive take-offs. **MICHELIN WILD GRIPPER OUTSOLE:** Rubber compound uses unique traction lugs for unmatched grip & traction on any terrain. **ArchFit SYSTEM** locks in the arch for a precise fit and foot guidance.



001
BLK/HALO GRAY/
HALO GRAY



ARMOURFUSE TRAINING

Brilliant, vibrant team colors permanently fused directly into textiles. Limitless customization, all-inclusive pricing with exclusive UA designs and customized prints. 41 different colors and 18 prints available. 6 piece minimum order.





ARMOURFUSE TRAINING

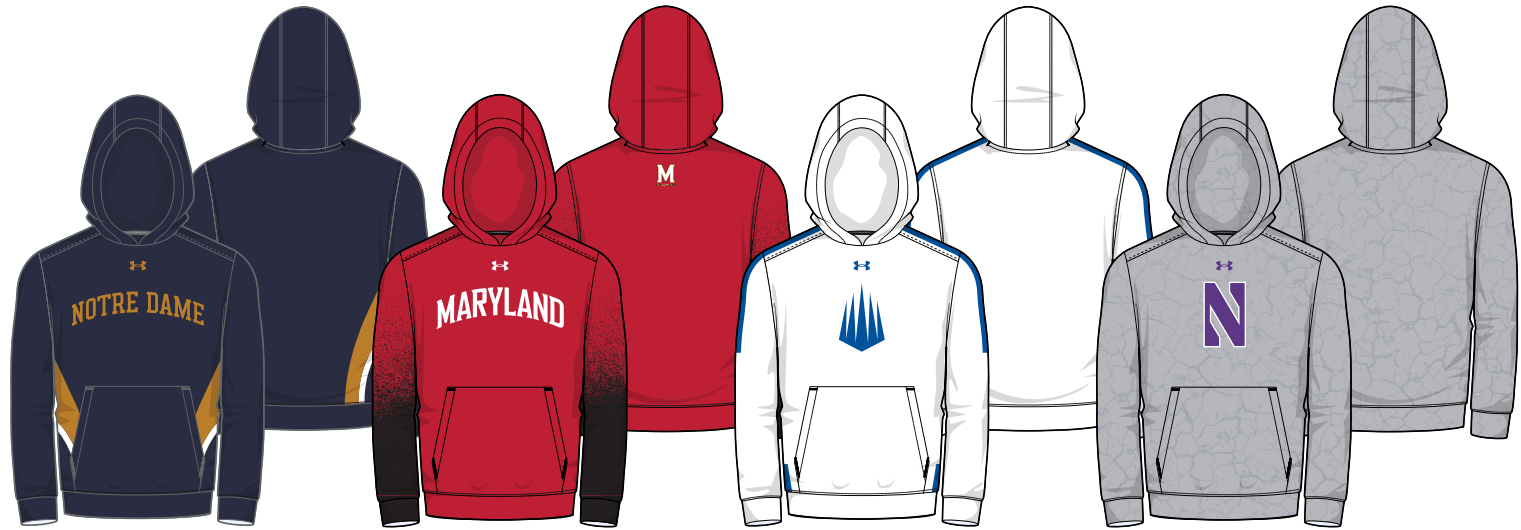
ARMOURFUSE TRAINING HOODY

ADULT: XS-2XL, OVERSIZE 3XL-4XL

YOUTH: YSM-YXL

STYLE	SIZE	PRICE
UJGJFHM (M)	XS-2XL	\$128.00
UJGJFHY (Y)	YSM-YXL	\$117.50

8.26 oz. Fleece with stretch lined
3-panel hood.



ARCH

GRADIENT DRIP

SPEED

SCOUT

NEW DESIGN FIRST SHIP: 6/1/2026

ARMOURFUSE LONG SLEEVE
HOODED SHOOTER

ADULT: XS-2XL, OVERSIZE 3XL-4XL

YOUTH: YSM-YXL

STYLE	SIZE	PRICE
UJGTHDM (M)	SM-2XL	\$122.50
UJGTHDY (Y)	YSM-YXL	\$117.50

New lightweight 4.8 oz. fabric with
increased stretch for ultimate comfort.



ARCH

GRADIENT DRIP

SPEED

SCOUT

NEW DESIGN FIRST SHIP: 6/1/2026

OVERSIZED SURCHARGE +\$5 PER SIZE | ADDITIONAL LENGTH OPTIONS FOUND ON PAGE 61



ARMOURFUSE TRAINING

ARMOURFUSE SHORT SLEEVE
HOODED SHOOTER

ADULT: XS-2XL, OVERSIZE 3XL-4XL

YOUTH: YSM-YXL

STYLE	SIZE	PRICE
UJGTSSM (M)	XS-2XL	\$117.50
UJGTSSY (Y)	YSM-YXL	\$112.50

New lightweight 4.8 oz. fabric with increased stretch for ultimate comfort.



ARCH

GRADIENT DRIP

SPEED

SCOUT

NEW DESIGN FIRST SHIP: 6/1/2026

ARMOURFUSE SLEEVELESS
HOODED SHOOTER

ADULT: XS-2XL, OVERSIZE 3XL-4XL

STYLE	SIZE	PRICE
UJGTHVM (M)	XS-2XL	\$97.00

New lightweight 4.8 oz. fabric with increased stretch for ultimate comfort.



ARCH

GRADIENT DRIP

SPEED

SCOUT

NEW DESIGN FIRST SHIP: 6/1/2026

OVERSIZED SURCHARGE +\$5 PER SIZE | ADDITIONAL LENGTH OPTIONS FOUND ON PAGE 61

**ARMOURFUSE TRAIN POLO****ADULT:** XS-2XL, OVERSIZE 3XL-4XL**SHIP:** 6/1/2026

STYLE	SIZE	PRICE
UJGTPIM (M)	XS-2XL	\$110.00

86% Polyester, 14% Elastane - Lightweight, smooth fabric, that wicks and dry's quickly. 2 Button CF Placket. Hem vent.

**ARCH****GRADIENT DRIP****SPEED****SCOUT****NEW DESIGN** FIRST SHIP: 6/1/2026

OVERSIZED SURCHARGE +\$5 PER SIZE | ADDITIONAL LENGTH OPTIONS FOUND ON PAGE 61



ARMOURFUSE TRAINING

**ARMOURFUSE
SHORT SLEEVE ¼ ZIP****ADULT:** XS-2XL, OVERSIZE 3XL-4XL

STYLE	SIZE	PRICE
WGQZVM (M)	XS-2XL	\$123.50

New lightweight 4.8 oz. fabric with increased stretch for ultimate comfort.

**ARCH****NEW DESIGN** FIRST SHIP: 6/1/2026**GRADIENT DRIP****SPEED****SCOUT****ARMOURFUSE
LONG SLEEVE ¼ ZIP****ADULT:** XS-2XL, OVERSIZE 3XL-4XL

STYLE	SIZE	PRICE
WGQZLM (M)	XS-2XL	\$134.00

New lightweight 4.8 oz. fabric with increased stretch for ultimate comfort.

**ARCH****NEW DESIGN** FIRST SHIP: 6/1/2026**GRADIENT DRIP****SPEED****SCOUT**

OVERSIZED SURCHARGE +\$5 PER SIZE | ADDITIONAL LENGTH OPTIONS FOUND ON PAGE 61



ARMOURFUSE TRAINING

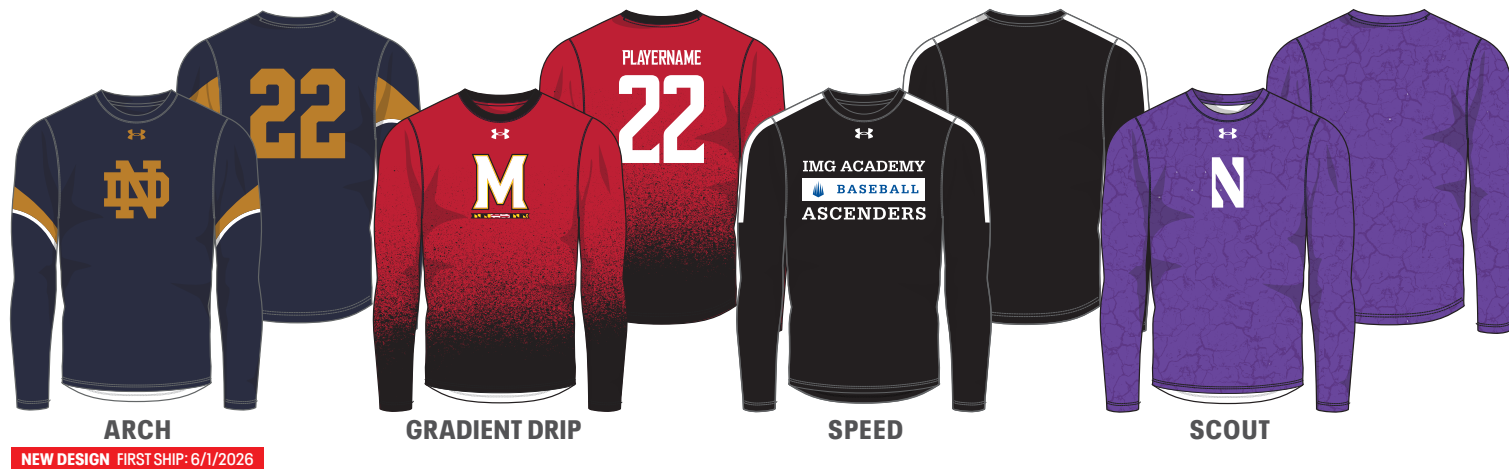
ARMOURFUSE
LONG SLEEVE TEE

ADULT: XS-2XL, OVERSIZE 3XL-4XL

YOUTH: YSM-YXL

STYLE	SIZE	PRICE
UJGJL2M (M)	XS-2XL	\$92.50
UJGJL2Y (Y)	YSM-YXL	\$88.50

New lightweight 4.8 oz. fabric with increased stretch for ultimate comfort.

ARMOURFUSE
SHORT SLEEVE TEE

ADULT: XS-2XL, OVERSIZE 3XL-4XL

YOUTH: YSM-YXL

LOOSE S S T	SIZE	PRICE
UJGJS2M (M)	XS-2XL	\$77.50
UJGJS2Y (Y)	YSM-YXL	\$73.00

New lightweight 4.8 oz. fabric with increased stretch for ultimate comfort.



OVERSIZED SURCHARGE +\$5 PER SIZE | ADDITIONAL LENGTH OPTIONS FOUND ON PAGE 61



ARMOURFUSE TRAINING

ARMOURFUSE TRAINING SHORTS

ADULT: XS-2XL, OVERSIZE 3XL-5XL

YOUTH: YSM-YXL

POCKETED SHORT	SIZE	PRICE
UJGS3PM (M)	XS-2XL	\$77.50
UJGS3PY (Y)	YSM-YXL	\$72.00

NON-POCKETED SHORT	SIZE	PRICE
UJGS3M (M)	XS-2XL	\$72.00
UJGS3Y (Y)	YSM-YXL	\$67.00

7" INSEAM FOR POCKETED AND NON-POCKETED SHORT

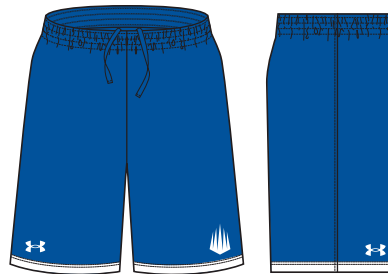


ARCH

NEW DESIGN FIRST SHIP: 6/1/2026



GRADIENT DRIP



SPEED



SCOUT

OVERSIZED SURCHARGE +\$5 PER SIZE | ADDITIONAL LENGTH OPTIONS FOUND ON PAGE 61



ARMOURFUSE TRAINING

ARMOURFUSE TRAINING
COMPRESSION TANK

ADULT: XS-2XL, OVERSIZE 3XL-4XL

STYLE	SIZE	PRICE
UJGJCTM (M)	XS-2XL	\$67.00



ARCH

NEW DESIGN FIRST SHIP: 6/1/2026



GRADIENT DRIP



SPEED



SCOUT

ARMOURFUSE TRAINING
COMPRESSION SLEEVELESS

ADULT: XS-2XL, OVERSIZE 3XL-4XL

STYLE	SIZE	PRICE
UJGJCXM (M)	XS-2XL	\$67.00



ARCH

NEW DESIGN FIRST SHIP: 6/1/2026



GRADIENT DRIP



SPEED



SCOUT

OVERSIZED SURCHARGE +\$5 PER SIZE | ADDITIONAL LENGTH OPTIONS FOUND ON PAGE 61



ARMOURFUSE TRAINING

ARMOURFUSE TRAINING
COMPRESSION SLEEVELESS MOCK

ADULT: XS-2XL, OVERSIZE 3XL-4XL

STYLE	SIZE	PRICE
UJGJCM (M)	XS-2XL	\$72.00



ARCH

GRADIENT DRIP

SPEED

SCOUT

NEW DESIGN FIRST SHIP: 6/1/2026

ARMOURFUSE TRAINING
COMPRESSION SHORT SLEEVE

ADULT: XS-2XL, OVERSIZE 3XL-4XL

STYLE	SIZE	PRICE
UJGJCS (M)	XS-2XL	\$67.00



ARCH

GRADIENT DRIP

SPEED

SCOUT

NEW DESIGN FIRST SHIP: 6/1/2026

OVERSIZED SURCHARGE +\$5 PER SIZE | ADDITIONAL LENGTH OPTIONS FOUND ON PAGE 61



ARMOURFUSE TRAINING

ARMOURFUSE TRAINING
COMPRESSION HALF SLEEVE

ADULT: XS-2XL, OVERSIZE 3XL-4XL

STYLE	SIZE	PRICE
UJGJHSM (M)	XS-2XL	\$72.00



ARCH

GRADIENT DRIP

SPEED

SCOUT

NEW DESIGN FIRST SHIP: 6/1/2026

ARMOURFUSE TRAINING
COMPRESSION LONG SLEEVE

ADULT: XS-2XL, OVERSIZE 3XL-4XL

STYLE	SIZE	PRICE
UJGJCLM (M)	XS-2XL	\$77.50



ARCH

GRADIENT DRIP

SPEED

SCOUT

NEW DESIGN FIRST SHIP: 6/1/2026

OVERSIZED SURCHARGE +\$5 PER SIZE | ADDITIONAL LENGTH OPTIONS FOUND ON PAGE 61



ARMOURFUSE TRAINING

Brilliant, vibrant team colors permanently fused directly into textiles. Limitless customization, all-inclusive pricing with exclusive UA designs and customized prints. 41 different colors and 18 prints available. 6 piece minimum order.



ARMOURFUSE TRAINING

ARMOURFUSE TRAINING HOODY

ADULT: XS-2XL, OVERSIZE 3XL

YOUTH: YSM-YXL

STYLE	SIZE	PRICE
UJGJFW (W)	XS-2XL	\$128.00
UJGJFY (Y)	YSM-YXL	\$117.50

8.26 oz. Fleece with stretch lined
3-panel hood.



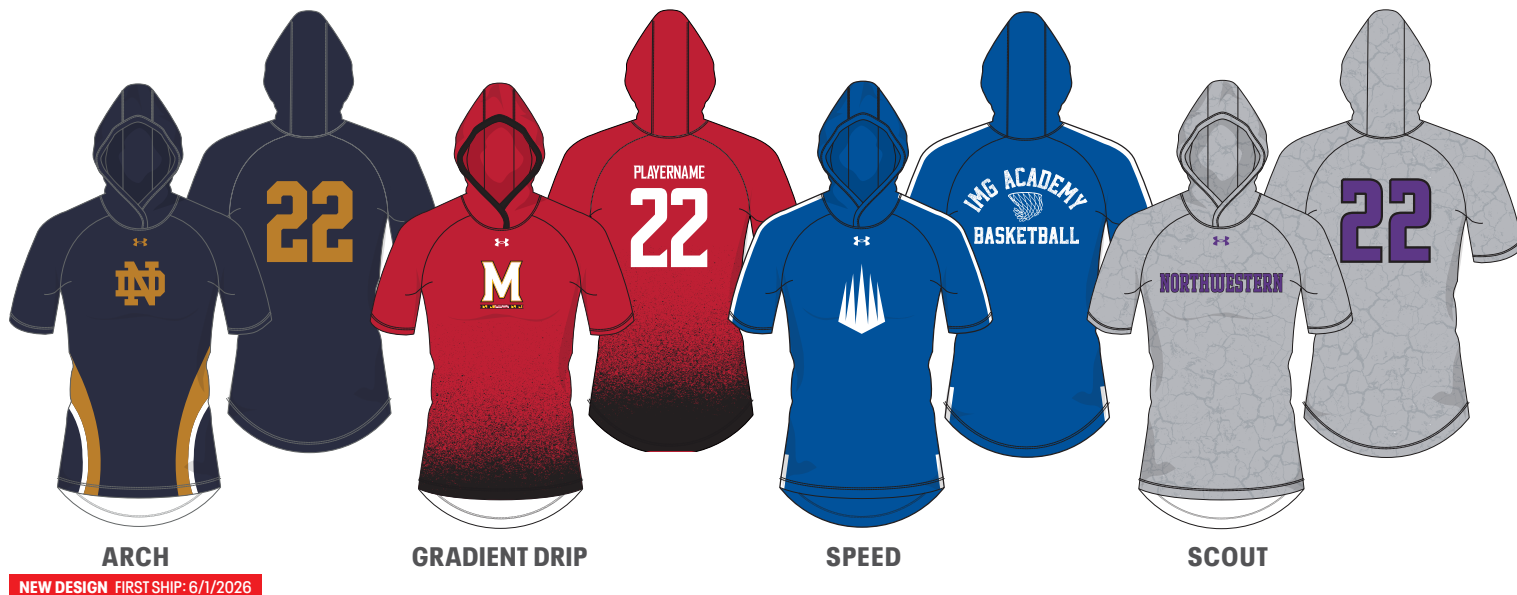
**ARMOURFUSE SHORT SLEEVE
HOODED SHOOTER**

ADULT: XS-2XL, OVERSIZE 3XL

YOUTH: YSM-YXL

STYLE	SIZE	PRICE
UJGTSSW (W)	XS-2XL	\$117.50
UJGTSSY (Y)	YSM-YXL	\$112.50

New lightweight 4.8 oz. fabric with
increased stretch for ultimate comfort.



OVERSIZED SURCHARGE +\$5 PER SIZE | ADDITIONAL LENGTH OPTIONS FOUND ON PAGE 61



ARMOURFUSE TRAIN POLO

ADULT: XS-2XL

SHIP: 6/1/2026

STYLE	SIZE	PRICE
UJGTPIW (W)	XS-2XL	\$110.00

86% Polyester, 14% Elastane- Lightweight fabric is super-comfortable, wicks, and dry's quickly. 2 Button CF Placket. Hem vent.



ARCH

NEW DESIGN FIRST SHIP: 6/1/2026

SPEED

SCOUT

OVERSIZED SURCHARGE +\$5 PER SIZE | ADDITIONAL LENGTH OPTIONS FOUND ON PAGE 61

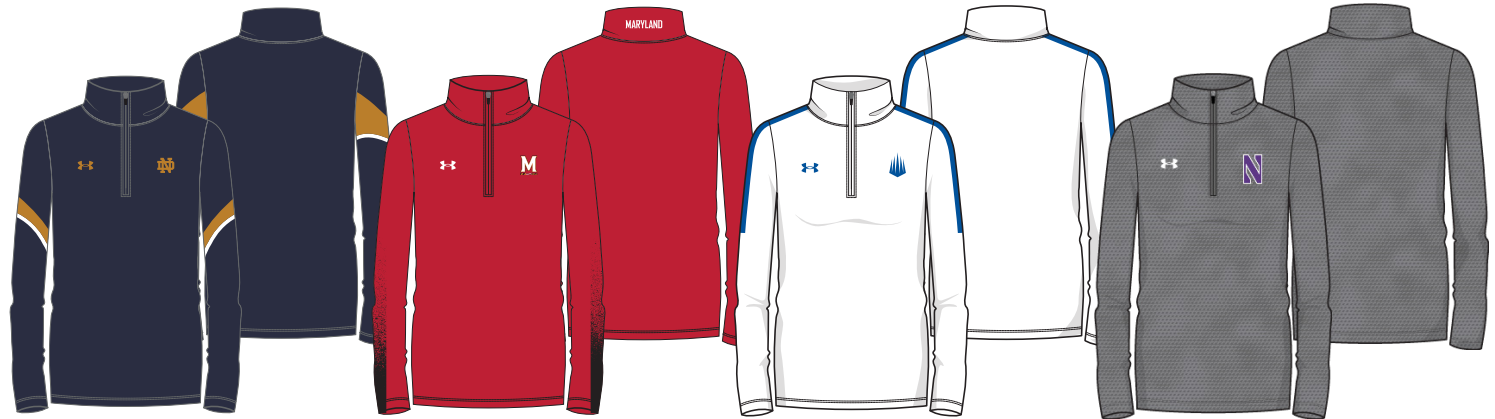
ARMOURFUSE TRAINING

**ARMOURFUSE
LONG SLEEVE ¼ ZIP**

ADULT: XS-2XL, OVERSIZE 3XL

STYLE	SIZE	PRICE
UJGHZLW (W)	XS-2XL	\$134.00

New lightweight 4.8 oz. fabric with increased stretch for ultimate comfort.



ARCH

NEW DESIGN FIRST SHIP: 6/1/2026

SPEED

SCOUT

**ARMOURFUSE
TRAINING SHORTS**

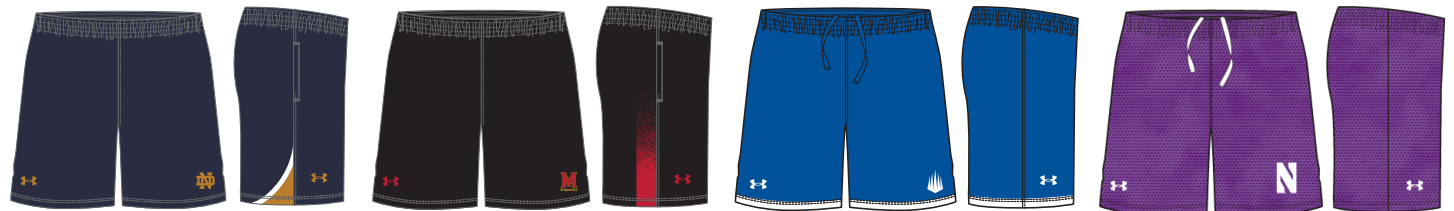
ADULT: XS-2XL, OVERSIZE 3XL

YOUTH: YSM-YXL

POCKETED SHORT	SIZE	PRICE
UJGS3PW (W)	XS-2XL	\$77.50
UJGS3PY (Y)	YSM-YXL	\$72.00

NON-POCKETED SHORT	SIZE	PRICE
UJGS3W (W)	XS-2XL	\$72.00
UJGS3Y (Y)	YSM-YXL	\$67.00

5" INSEAM FOR POCKETED AND NON-POCKETED SHORT



ARCH

NEW DESIGN FIRST SHIP: 6/1/2026

SPEED

SCOUT

OVERSIZED SURCHARGE +\$5 PER SIZE | ADDITIONAL LENGTH OPTIONS FOUND ON PAGE 61

ARMOURFUSE TRAINING

**ARMOURFUSE
LONG SLEEVE TEE**

ADULT: XS-2XL, OVERSIZE 3XL

YOUTH: YSM-YXL

STYLE	SIZE	PRICE
UJGJL2W (W)	XS-2XL	\$92.50
UJGJL2Y (Y)	YSM-YXL	\$88.50

New lightweight 4.8 oz. fabric with increased stretch for ultimate comfort.



**ARMOURFUSE
SHORT SLEEVE TEE**

ADULT: XS-2XL, OVERSIZE 3XL

YOUTH: YSM-YXL

LOOSE S S T	SIZE	PRICE
UJGJS2W (W)	XS-2XL	\$77.50
UJGJS2Y (Y)	YSM-YXL	\$73.00

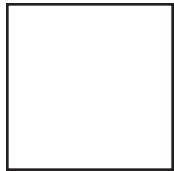
New lightweight 4.8 oz. fabric with increased stretch for ultimate comfort.



OVERSIZED SURCHARGE +\$5 PER SIZE | ADDITIONAL LENGTH OPTIONS FOUND ON PAGE 61



ARMOUR *FUSE*



WHITE



BLACK



PITCH GRAY



GRAPHITE



BASEBALL GRAY



SILVER GRAY



OCEAN STORM



MIDNIGHT NAVY



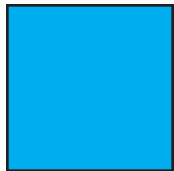
ROYAL



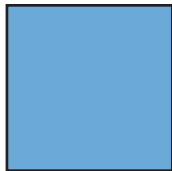
POWDERKEG BLUE



ELECTRIC BLUE



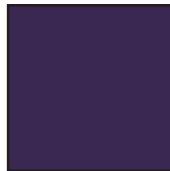
CAPRI



CAROLINA BLUE



COASTAL TEAL



PURPLE



MAROON



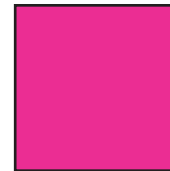
CARDINAL



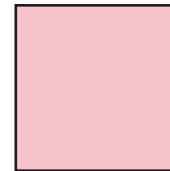
CRIMSON



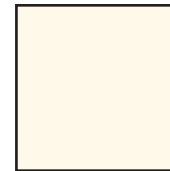
UNIVERSITY RED



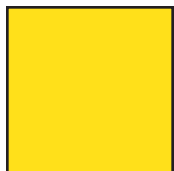
TROPIC PINK



PINK



VINTAGE WHITE



TAXI



CAMPUS GOLD



TENNESSEE ORANGE



DARK ORANGE



TEXAS ORANGE



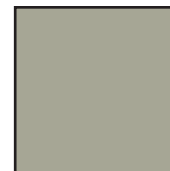
CLEVELAND BROWN



GOLD RUSH



TEAM VEGAS GOLD



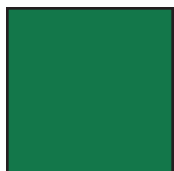
GRAYSTONE



MILITARY GREEN



FOREST GREEN



TEAM KELLY GREEN



MIAMI TEAL

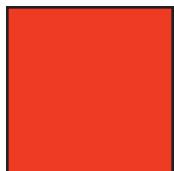


SEA GLASS



POISON

FLUORESCENTS (NOT CURRENTLY AVAILABLE IN TONAL PRINTS OR ON GAMEDAY PRODUCT)



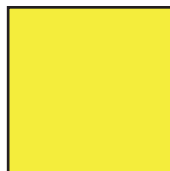
ORANGE FLUORESCENT



PINK FLUORESCENT



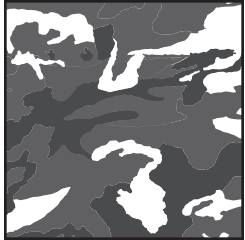
GREEN FLUORESCENT



YELLOW FLUORESCENT

**ARMOUR FUSE**

Prints available in all ArmourFuse colors. (Fluorescents not currently available in tonal prints)



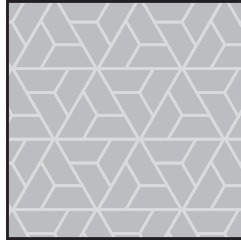
WOODLAND CAMO



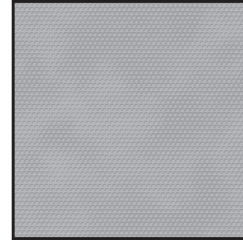
BENGAL



BLUR



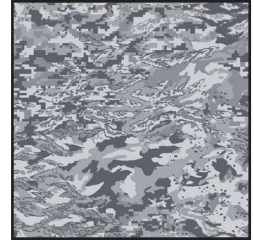
RAZOR



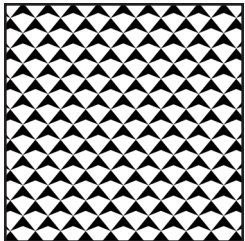
SCALE



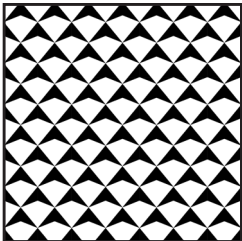
SPLINTER



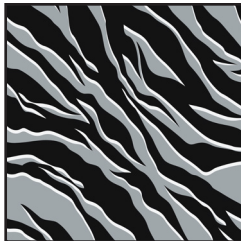
ABC CAMO



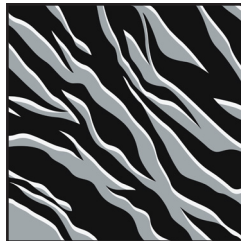
SHIELD MICRO



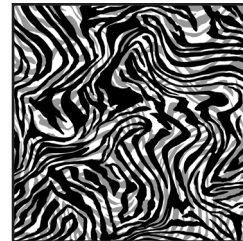
SHIELD MID



TIGER MICRO



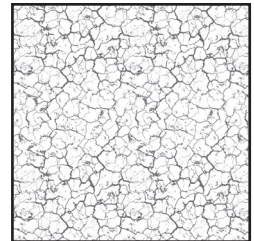
TIGER MACRO



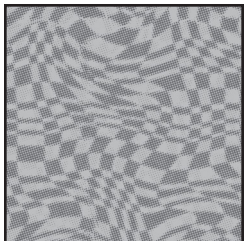
ZEBRA MICRO



ZEBRA MACRO



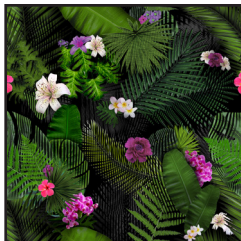
CRACKLE



HAFTONE CHECKER



TIGER CAMO



FLORAL
(Not available on Gameday)



DESERT
WOODLAND CAMO
(Locked color combinations,
cannot be altered)



FONT OPTIONS

ATHLETIC SCRIPT

ABCDEFGHIJKLMNOPQRSTUVWXYZ
abcdefghijklmnopqrstuvwxyz

BADGER

ABCDEFGHIJKLMNOPQRSTUVWXYZ
0123456789

0123456789

BEAR

ABCDEFGHIJKLMNOPQRSTUVWXYZ
0123456789

0123456789

CADET

ABCDEFGHIJKLMNOPQRSTUVWXYZ
0123456789

0123456789

FULL BLOCK

ABCDEFGHIJKLMNOPQRSTUVWXYZ
0123456789

0123456789

MODERN

ABCDEFGHIJKLMNOPQRSTUVWXYZ
0123456789

0123456789

PREMIER

ABCDEFGHIJKLMNOPQRSTUVWXYZ
0123456789

0123456789

SWINGMAN

ABCDEFGHIJKLMNOPQRSTUVWXYZ
abcdefghijklmnopqrstuvwxyz

NOTE:

Gameday Select Package Pricing now includes all of the above listed fonts.
Dropped fonts available for fill-in orders only.

TERRAFONT

ABCDEFGHIJKLMNOPQRSTUVWXYZ
0123456789

0123456789

TUSCAN

ABCDEFGHIJKLMNOPQRSTUVWXYZ
0123456789

0123456789

UA COLLEGIATE SANS

ABCDEFGHIJKLMNOPQRSTUVWXYZ
0123456789

0123456789

UA COLLEGIATE SANS CONDENSED

ABCDEFGHIJKLMNOPQRSTUVWXYZ
0123456789

0123456789

UA COLLEGIATE SERIF

ABCDEFGHIJKLMNOPQRSTUVWXYZ
0123456789

0123456789

UA COLLEGIATE SERIF CONDENSED

ABCDEFGHIJKLMNOPQRSTUVWXYZ
0123456789

0123456789

UNDENIABLE

ABCDEFGHIJKLMNOPQRSTUVWXYZ
0123456789

0123456789

LETTERING ARRANGEMENTS

STRAIGHT

TEAMNAME

BRIDGED

TEAMNAME

SCRIPT WITH TAIL

Teamname

ARCH

TEAMNAME

VERTICAL ARCH

TEAMNAME

STOCK DECORATION OPTIONS

SCREEN PRINT	ONE COLOR	TWO COLORS
Team Name	\$5.50	\$10.50
Team Mascot/Logo	\$5.50	\$10.50
Front + Back Numbers	\$12.00	\$17.00

TWILL	ONE COLOR	TWO COLORS
Team Name	\$22.00	\$27.00
Front + Back Numbers	\$27.00	\$32.00
Player Names	\$22.00	
ArmourFuse Twill Patch (Max 3"x3")	\$11.00	\$11.00

EMBROIDERY	ONE COLOR	TWO COLORS
Team Name (up to 2")	\$10.00	\$10.00

see page 61 for Embroidered Mascot/Logo pricing

ADDITIONAL STOCK OPTIONS & NOTES

- Player Numbers Per Location = 1/2 of above "Front + Back Numbers" pricing
- Player Name Directly On Jersey Only (No Nameplates)
- ArmourFuse Twill = Twill Pricing +\$10
- Add Tail to Script Font Twill Team Name +\$10
- Add Embroidery to Twill Tail +\$10
- Non-Stock designs and lettering may require additional charge at Under Armour's discretion (call for quote)

STOCK OPTIONS

3/16" 1-COLOR PIPE	LIST PRICE
Around Placket (UBJ316P)	\$17.00
Sleeve Ends (UBJ316S)	\$17.00
Down Side (UBP316D)	\$17.00

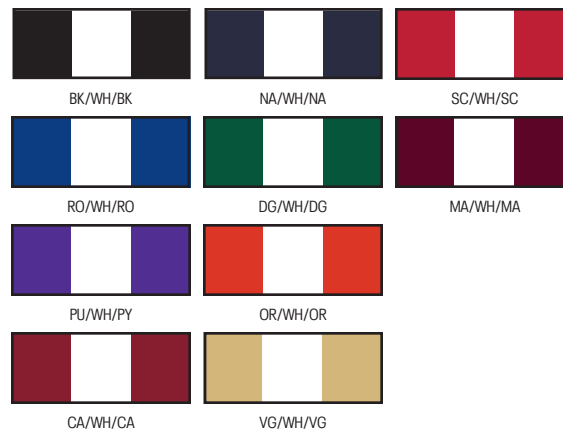
1/2" 3-COLOR BRAID	LIST PRICE
Around Placket (UBJ12AP)	\$17.00
Around Neck (UBJ12NB)	\$17.00
Sleeve Ends (UBJ12SE)	\$17.00
Down Sides (UBP12DS)	\$17.00

NOTE: Additional leadtime should be expected for orders including piping, braiding and/or hemming. Please contact a UA Sale Rep for updates.

3/16" 1-COLOR PIPE AVAILABLE COLORS



1/2" 3-COLOR BRAID AVAILABLE COLORS



GAMEDAY OPTIONS



1/2" 3-COLOR BRAID

1 2 3 ANY COMBO OF PIPE COLORS

INCLUDED PIPE/BRAID

- 1. Jersey Front:** Around Neck **OR** Around Placket **OR** None
2. Jersey Sleeves: Sleeve Ends **OR** None
3. Pants: Down Side **OR** None

OPTIONAL PANT ALTERATIONS	LIST PRICE
Reduce Knicker Inseam 2" and Hem w/ Elastic	\$0.00
Increase Knicker Inseam 2" and Hem w/ Elastic	\$0.00
Increase Knicker Inseam 4" and Hem w/ Elastic*	\$15.00
Reduce Relaxed/Tapered Inseam 2" and Hem	\$0.00
Increase Relaxed/Tapered Inseam 2" and Hem	\$0.00
Increase Relaxed/Tapered Inseam 4" and Hem*	\$15.00

OPTIONAL ARMOURFUSE® TWILL (L X H)	LIST PRICE
Custom Font Team Name (Max. 14" x 4.25")	\$10.00
Custom Left Chest Team Logo (Max. 4" x 5")	\$15.00
Custom Sleeve Patch (Max. 4" x 4")	\$15.00
Custom Back Neck Patch (Max. 3" x 2")	\$15.00
Player Name (On Nameplate)	\$40.00
Player Name Directly on Jersey (No Nameplate)	\$30.00
Blank Nameplate	\$7.00
Add Tail to Script Font Team Name	\$20.00
Add Text to Script Font Tail	\$20.00

Note: Vector art must be provided for custom Armourfuse® Twill or additional artwork charges will apply

*Available on Men's styles only



ADDITIONAL LENGTH OPTIONS (ARMOURFUSE ONLY - \$10 FOR ALL -/+ OPTIONS)

BASEBALL/SOFTBALL

TYPE	ADJUSTMENT	CODE
JERSEYS	Add 2" body length	UJX2BDY
	Add 4" body length	UJX4BDY
PANTS	Subtract 2" from inseam	UJSHTN2
	Add 2" to inseam length	UJX2INS
	Add 4" to inseam length	UJX4INS

FOOTBALL

TYPE	ADJUSTMENT	CODE
JERSEYS	Subtract 2" body length	UJSHTN2
PANTS	Add 2" to inseam length	UJX2INS

LACROSSE/ FIELD HOCKEY

TYPE	ADJUSTMENT	CODE
JERSEYS	Add 2" body length	UJX2BDY
SHORTS	Subtract 1" from inseam	UJSHTN1
	Subtract 2" from inseam	UJSHTN2
	Add 1" to inseam length	UJX1INS
	Add 2" to inseam length	UJX2INS
KILTS	Add 1" to inseam length	UJX1INS
	Add 2" to inseam length	UJX2INS

BASKETBALL

TYPE	ADJUSTMENT	CODE
JERSEYS	Add 2" body length	UJX2BDY
	Add 4" body length	UJX4BDY
	Add 6" body length	UJX6BDY
SHORTS	Subtract 1" from inseam	UJSHTN1
	Add 1" to inseam length	UJX1INS
	Add 2" to inseam length	UJX2INS
	Add 3" to inseam length	UJX3INS
SHOOTING SHIRTS	Add 2" body, 1" sleeve	UJX2B1S
	Add 4" body, 2" sleeve	UJX4B2S
	Add 6" body, 3" sleeve	UJX6B3S

SOCCER

TYPE	ADJUSTMENT	CODE
JERSEYS	Add 2" body length	UJX2BDY
SHORTS	Subtract 1" from inseam	UJSHTN1
	Subtract 2" from inseam	UJSHTN2
	Add 1" to inseam length	UJX1INS
	Add 2" to inseam length	UJX2INS

TRACK & FIELD

TYPE	ADJUSTMENT	CODE
JERSEYS	Add 2" body length	UJX2BDY
LOOSE SHORTS*	Subtract 1" from inseam	UJSHTN1
	Add 1" to inseam length	UJX1INS

*UJTS2M & UJTS2W ONLY

TRAINING

TYPE	ADJUSTMENT	CODE
JERSEYS	Add 2" body length	UJX2BDY
	Add 4" body length	UJX4BDY
	Add 6" body length	UJX6BDY
SHORTS	Subtract 1" from inseam	UJSHTN1
	Subtract 2" from inseam	UJSHTN2
	Add 1" to inseam length	UJX1INS
	Add 2" to inseam length	UJX2INS
	Add 3" to inseam length	UJX3INS

VOLLEYBALL

TYPE	ADJUSTMENT	CODE
JERSEYS	Add 2" body length	UJX2BDY
	Add 1" sleeve length	UJX1SL
SHORTS	Subtract 1" from inseam	UJSHTN1
	Subtract 2" from inseam	UJSHTN2

STANDARD SLEEVE PRINT STRIPES

*OPTIONS - Code numbers listed below stripe patterns

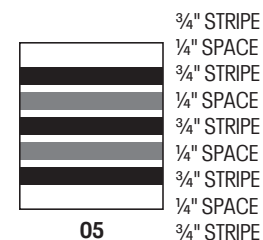
*Stripes may be adjusted to fit smaller garments and not measure exactly as shown.



01



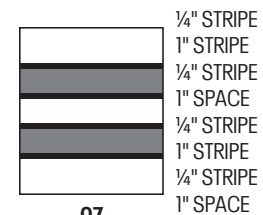
02



05



06



07



08



09

EMBROIDERY

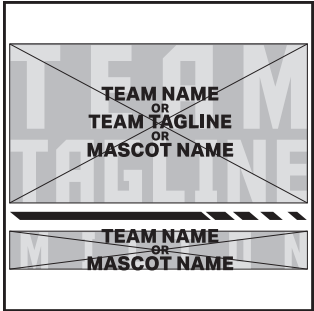
MASCOTS (STOCK ONLY)	LIST PRICE
Mascot	\$11.00
Mascot with One Line	\$12.00
Mascot with Two Lines	\$13.00
American Flag	\$11.00
Small/Homeplate	\$6.00
DIGITIZING (STOCK AND ARMOURFUSE ONLY)	LIST PRICE
Stock Designs and Lettering	\$180.00
Custom Logos	Call for Quote

- Prices are based upon size of designs, not the number of colors. Prices are subject to change if design exceeds specifications.
- Dimensions are maximum space - unless specifically noted best judgement will be used.
- Letter styles are available horizontal or arched.
- No digitizing charge for team names.
- Flag size up to 2" by 3" (bigger area - call for quote)
- Minimum order charges apply for embroidery
- All designs require an additional digitizing charge, except:
 - 1) Digitized designs supplied on a disk
 - 2) Digitized design is a re-order of an existing design

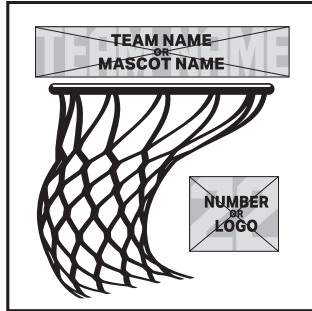


ARMOURFUSE® GRAPHIC OPTIONS

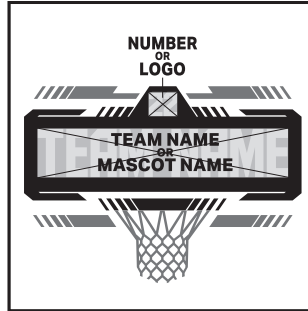
A



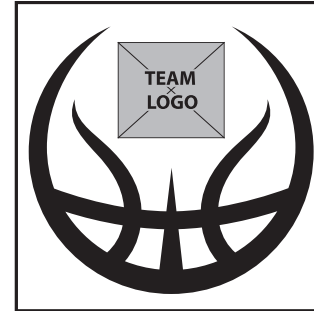
B



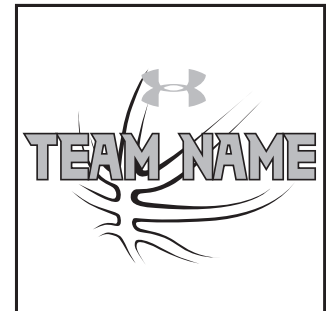
C



D



E



F



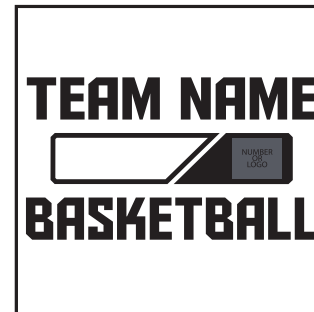
G



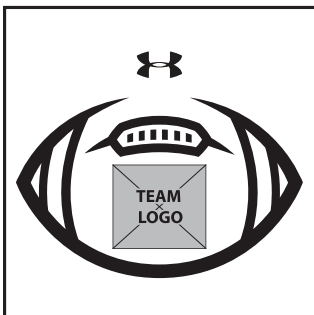
H



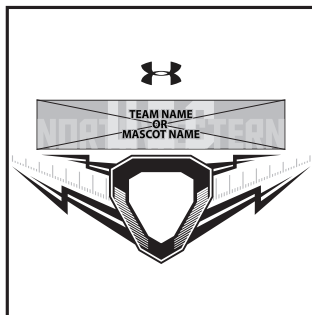
I



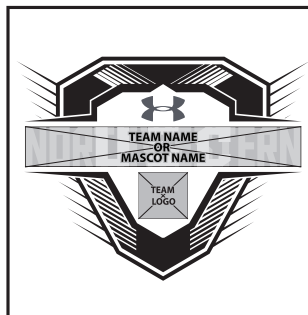
J



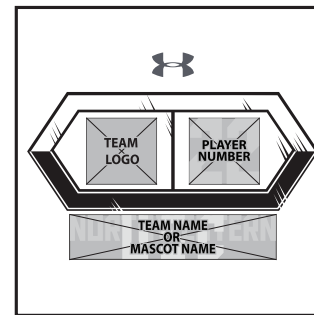
K



L



M





GAMEDAY TEAM UNIFORMS
ORDERING INFORMATION AND CUSTOMER SERVICE:
1-800-474-6118
www.uacustomuniforms.com



ARMOURFUSE™ TEAM UNIFORMS
ORDERING INFORMATION AND CUSTOMER SERVICE:
1-888-871-0990
www.underarmourteamuniforms.com



STOCK TEAM UNIFORMS
ORDERING INFORMATION AND CUSTOMER SERVICE:
1-888-871-0990
www.underarmourteamuniforms.com

ORDERING INFORMATION

Guarantee: The materials and workmanship of our garments are guaranteed when given fair treatment and used under normal conditions.

Color Matching: Scientifically, it is not possible to achieve a perfect color match from one dye lot to another. Therefore, we cannot guarantee a perfect match from order to order or from one fabric to another.

Color Abbreviation Key: The following abbreviations may be used when ordering merchandise.

BG Baseball Gray	EB Electric Blue	PI Pink	SI Silver Grey
BK Black	GP Graphite	PK Powderkeg Blue	TI Taxi
BR Brown	KE Team Kelly Green	PO Poison	TE Teal
CA Cardinal	LG Steeltown Gold	PU Purple	TO Texas Orange
CB Carolina Blue	MA Maroon	RO Royal	TP Tropic Pink
CP Capri	NA Midnight Navy	RU Gold Rush	VG Team Vegas Gold
DG Forest Green	OR Dark Orange	SC University Red	WH White

Price Policy: All catalog prices are list or suggested retail. Prices are subject to change without notice. Merchandise will be invoiced based on the prices in effect at the time the order is placed.

Terms: Prices are FOB shipping point. Payment is due Net 30.

Minimum Order Charges: A handling charge of \$10.00 will be added to orders of less than \$150.00 list. Custom and GamedaySelect fill-in minimum order is 6 units per style and color. A 100% surcharge will be applied to orders of 1-2 units, and a 50% surcharge for orders of 3-5 units.

Lettered Orders for COD Shipment: A 50% deposit is required on all lettered orders calling for COD shipment.

Delivery: Shipments will always be made by the fastest, least expensive means possible. The customer will assume any additional expense required to expedite delivery.

Order Cancellations: Cancellations must be received at least one day prior to the ship date. Special order garments cannot be cancelled after they have been cut. Lettered garments cannot be cancelled after they have been printed or sewn.

Returns: Claims must be reported to our office within 10 working days of merchandise receipt. Returns cannot be made after 30 days of the invoice date. All returns for plain merchandise must be clearly marked with an authorization number or label obtained from our office. All returns for lettered merchandise must be clearly marked "LETTERING." When requesting an authorization label, the following information is required: Reason for return, Invoice #, Style #, Color, Size/Quantity. An authorization label will then be sent to you to prepare the merchandise for return shipment. We reserve the right to repair, replace or issue credit for any merchandise returned. A 15% restocking fee and shipping charges will be charged for merchandise returned that is either not damaged or the damage is determined not to be our fault. All worn garments must be properly laundered prior to return or they will not be accepted.

All custom and custom-stock uniforms may not be returned under any circumstances if delivered properly.

Shortages: All claims must be made within 10 days of the invoice date.

New Accounts: All new accounts must be opened through your local sales representative. New accounts that do not have a Dunn and Bradstreet rating will be shipped COD until a credit line has been established.

Samples: Samples will be entered and billed as a regular order. Samples cannot be returned without prior approval from our office.

Imprint Orders: All imprint orders must be emailed, mailed or faxed in with detailed instructions on UA order forms. Imprint orders will not be taken by phone. Once garments have been lettered, the order cannot be cancelled or returned.

Under Armour will not be responsible for any items not checked for order accuracy or sizing before being sent to a printer/screener. We will not be responsible for shrinkage, defects, or damages caused during the imprinting of our garments by sources other than our own lettering department. Screenprinting sublimated uniforms can cause color migration. We do not recommend screenprinting on sublimated garments.

Photography is the property of Under Armour and is not to be used without written authorization.

UNIFORM CARE INSTRUCTIONS

To enhance the appearance and extend the life of your uniforms, Under Armour recommends that you follow these cleaning and storing procedures:

DO NOT DRY CLEAN

DO NOT WASH IN HOT WATER

DO NOT USE CHLORINE BLEACH

DO NOT USE FABRIC SOFTENER

DO NOT WASH WHITES AND COLORS TOGETHER

DO NOT OVERLOAD THE WASHING MACHINE

DO NOT MACHINE DRY ON HIGH HEAT

DO NOT LEAVE WET OR DAMP GARMENTS IN YOUR TRAVEL BAG, IN A PILE WITH OTHER CLOTHING OR IN WASHING MACHINE

- Pre wash uniform prior to use.
- Uniforms should always be laundered immediately after wearing. However, if this is not possible, rinse garments and hang individually on rust-proof hangers. (Moisture may cause color migration of acid dyes so we advise separating wet or damp uniforms.)
- Belts and any other contrasting color items should be washed separately from the garment.
- It is always advisable to test wash a single uniform according to directions before washing an entire load.
- Wash and rinse all garments in warm water (approx. 110°) with mild detergent. Remove promptly after wash cycle.
- For optimum results, hang garments (especially those with elastane) to dry. If you cannot hang dry, machine dry on the lowest setting. Turn jerseys inside out before machine drying. Remove items from dryer immediately upon completion of the cycle. (Excessive heat can cause fabric shrinkage, discoloration, and cracking and peeling of vinyl plastisol lettering inks.)
- Make sure uniforms are completely dry before storing. Store in a dry area to prevent mildew. Protect them from sunlight and fluorescent light to prevent yellowing.

PLEASE NOTE: Under Armour will not be responsible for uniforms that are damaged due to improper care and maintenance. Failure to follow our specified care instructions will void all guarantees.

UNIFORM FILL-IN LIFECYCLE

LAST SHOWN IN CATALOG	LAST FILL-IN SEASON	LAST FILL-IN SHIP
WI'22	WI'25	3/15/2026
SP'23	SP'26	6/15/2026
FA'23	FA'26	12/15/2026
W'23	W'26	3/15/2027
SP'24	SP'27	6/15/2027
FA'24	FA'27	12/15/2027
WI'24	WI'27	3/15/2028
SP'25	SP'28	6/15/2028
FA'25	FA'28	12/15/2028
W'25	W'28	3/15/2029
SP'26	SP'29	6/15/2029
FA'26	FA'29	12/15/2029



MEN'S



COMPRESSION

Ultra-tight, second skin fit that keeps you locked in & makes you feel like you can do anything.



FITTED

A slimmer, athletic cut that allows total mobility but eliminates the bulk of extra fabric.



REGULAR

Fuller cut for complete comfort, total range of motion & greater breathability.



HOW TO MEASURE

CHEST: Place the tape measure under your arms at the fullest part of your chest, wrap around your body until your fingers meet and mark the measurement

WAIST: Measure around your natural waistline - right above your hips. Be careful not to squeeze too tight to allow a little give.

HIPS: With your feet together, measure around the fullest part of your hips to ensure you'll have enough room to move comfortably.

	US SIZE	CHEST (IN)	WAIST (IN)	HIP (IN)
SM	26-28	34-37	29-31	34-36
MD	30-32	37-41	31-34	36-39
LG	34-36	41-44	34-37	39-42
XL	38-40	44-48	37-41	42-46
2XL	42-44	48-52	41-45.5	46-50
3XL	46-48	52-56	45.5-50	50-54
4XL	50-52	56-60	50-54.5	54-58
5XL	54-56	60-64	54.5-59	58-62

REGULAR	UP TO 6'1"
TALL	6'1" - 6'4"
2T	6'4" - 6'7"
3T	6'7" AND TALLER

BOYS



FITTED

A slimmer, athletic cut that allows total mobility but eliminates the bulk of extra fabric.



REGULAR

Fuller cut for complete comfort, total range of motion & greater breathability.



HOW TO MEASURE

CHEST: Place the tape measure under your arms at the fullest part of your chest, wrap around your body until your fingers meet and mark the measurement

WAIST: Measure around your natural waistline - right above your hips. Be careful not to squeeze too tight to allow a little give.

HIPS: With your feet together, measure around the fullest part of your hips to ensure you'll have enough room to move comfortably.

	US SIZE	CHEST (IN)	WAIST (IN)	HIP (IN)
YXS	7	25-26	23-24	26-27
YSM	8	26-27	24-25	27-28
YMD	10-12	27-29	25-27	28-31
YLG	14-16	29-32.5	27-30	31-34
YXL	18-20	32.5-35.5	30-33	34-37



WOMEN'S



COMPRESSION

Ultra-tight, second skin fit that keeps you locked in & makes you feel like you can do anything.



FITTED

Sits close to the skin for a streamlined fit without the squeeze of compression.



REGULAR

Fuller, more generous cut for enhanced range of motion & an effortlessly relaxed fit.



HOW TO MEASURE

CHEST: Place the tape measure under your arms at the fullest part of your chest, wrap around your body until your fingers meet and mark the measurement

WAIST: Measure around your natural waistline - right above your hips. Be careful not to squeeze too tight to allow a little give.

HIPS: With your feet together, measure around the fullest part of your hips to ensure you'll have enough room to move comfortably.

	US SIZE	CHEST (IN)	WAIST (IN)	HIP (IN)
XS	0-2	32.5-33.5	25.5-27	34.5-36
SM	4-6	33.5-36	27-29	36-38
MD	8-10	36-38	29-31	38-40
LG	12-14	38-41	31-34	40-43
XL	16	41-44	34-37	43-46
2XL	18	44-47	37-40	46-49
3XL	20	47-50	40-43	49-52
4XL	22	50-53	43-46	52-55

SHORT	5'4" AND SHORTER
REGULAR	UP TO 5'8"
TALL	5'8" - 5'11"
2T	5'11" - 6'2"
3T	6'2" AND TALLER

GIRLS



FITTED

Sits close to the skin for a streamlined fit without the squeeze of compression.



REGULAR

Fuller, more generous cut for enhanced range of motion & an effortlessly relaxed fit.



HOW TO MEASURE

CHEST: Place the tape measure under your arms at the fullest part of your chest, wrap around your body until your fingers meet and mark the measurement

WAIST: Measure around your natural waistline - right above your hips. Be careful not to squeeze too tight to allow a little give.

HIPS: With your feet together, measure around the fullest part of your hips to ensure you'll have enough room to move comfortably.

	US SIZE	CHEST (IN)	WAIST (IN)	HIP (IN)
YXS	7	25-26.5	23-24	26-28
YSM	8	26.5-27.5	24-24.5	28-29
YMD	10-12	27.5-30.5	24.5-26.5	29-32.5
YLG	14-16	30.5-34	26.5-30.5	32.5-36.5
YXL	18-20	34-36	30.5-32.5	36.5-38.5

WEST

GREG ROMINE
719.238.9244
gromine@underarmour.com
HI // CA // TX

ANNA ROPER
443.404.6237
aroper@underarmour.com
AK // WA // OR // ID // MT // WY // NV

SHANNON BECKER
shannon.becker@underarmour.com
845.453.6117
IA // MN // NE // ND // SD

FRANK WEBER
618.540.3955
fweber@underarmour.com
IL // MO // KS // OK // CO // NM // UT // AZ

EAST

MONTE GIBBS
662.801.3039
mgibbs@underarmour.com
TN // LA // AL // MS // AR // KY

DAN WILLIAMS
352.672.1676
dwilliams@underarmour.com
NC // SC // GA // FL

TONY DONOFRIO
NATIONAL SALES MANAGER
419.356.9742
tonyd@underarmour.com
WI // MI // IN // OH

GARY POWERS
410.746.3790
gpowers@underarmour.com
MD // DC // VA // WV // Eastern PA

BOB BARTLETT
315.380.6505
bobb@underarmour.com
NY // Western PA

JAY KELLEHER
443.615.0462
jkelleher@underarmour.com
New England // NJ

COLLEGIATE

TOMMY AMICO
951.808.0367
tamico@underarmour.com
WEST

TODD LOCKLEAR
410.454.6572
tlocklear@underarmour.com
EAST

CHRIS PORTS
443.220.1009
cports@underarmour.com
MID ATLANTIC

BELLA GARONE
631.307.0009
isabella.garone@underarmour.com
NORTHEAST

BRIAN SWATEK
bswatek@underarmour.com
SOUTH

DAN LAWLER
dlawler@underarmour.com
MIDWEST

LICENSEES

MOMENTEC BRANDS
Stock & Armourfuse Uniforms
www.underarmourteamuniforms.com
888.871.0990
UAorders@momentecbrands.com

POWERS ATHLETIC
Custom Uniforms
www.uacustomuniforms.com
800.474.6118
customerservice@powersathletic.com

THE GAME
Custom Headwear
www.uateamheadwear.com
800.723.5656
customerservice@2thegame.com

USB
McDavid & Shock Doctor
Water Bottles
657.383.4438
UA@unitedspb.com

SAFILO
Eyewear
uateamsportsorders@safilo.com



TEL: 1.888.828.1547 / B2B: ARMOURHOUSE.UNDERARMOUR.COM

COLLEGIATE

TEAMSPTS COLLEGIATE / TEAMSPTS.COLLEGIATE@UNDERARMOUR.COM

EAST

TEAM SPORTS SE / TEAMSPTSSE@UNDERARMOUR.COM
TEAM SPORTS NE / TEAMSPTSNE@UNDERARMOUR.COM

WEST

TEAM SPORTS WC / TEAMSPTSWC@UNDERARMOUR.COM
TEAM SPORTS SW / TEAMSPTS@UNDERARMOUR.COM

ALL TEAM SPORTS ORDERS AND QUESTIONS PLEASE USE THE FOLLOWING:

1.888.828.1547
Corporate Headquarters
1020 Hull Street
Baltimore, MD 21230

CORPORATE OFFICE HOURS OF OPERATION

Monday through Friday, 8:30am – 5:30pm, EST.

UNDER ARMOUR® B2B – ONLINE ORDERING

armourhouse.underarmour.com

- 24/7 access to check inventory and place orders
- Ability to track orders and shipments
- Priority product allocation
- Faster processing time

UNDER ARMOUR® B2B – SUPPORT

B2B_support@underarmour.com

UNDER ARMOUR® RETURN POLICY

Under Armour® stands behind its gear and EXPECTS nothing less than perfection. If you have received a defective product, an incorrect size, or an incorrect order, please contact us immediately for a return authorization number so that we can quickly process your return and ensure your satisfaction.

ALL RETURNS MUST BE COMPLETED WITHIN 30 DAYS OF RECEIPT AND MUST BE IN REASONABLE CONDITION. ALL RETURNS MUST HAVE THE RA# CLEARLY MARKED ON THE CARTON. ALL RETURNS ARE SUBJECT TO A 15% RESTOCKING FEE.

Should you need to return or exchange an item, you MUST include your RA#, a copy of your invoice, and an explanation in writing as to why you are returning the item. Send your return to the marked address on your pack list. If you are exchanging merchandise, you are responsible for the cost of returning the product. Original shipping costs are non-refundable. All returned merchandise must be received in new, resalable condition.

ODH RETURNS:

Under Armour Returns
RA#
7030 Tradepoint Ave
Dock Door 69
Sparrows Point, MD 21219

RIALTO RETURNS:

Under Armour Returns
RA#
2510 W Walnut Ave
Rialto, CA 92376

NASHVILLE RETURNS:

Under Armour Returns
RA#
13 Athlete's Way
Mt Juliet, TN 37122

UNDER ARMOUR® CANCELLATION POLICY

Any request for cancellation of an order for UA products must be made, in writing, through the customer's UA Sales Representative. A request to cancel an order must be made more than 30 days before the customer's original desired ship date. All cancellations are subject to UA approval.

ALL PRICES SET FORTH HEREIN ARE SUBJECT TO CHANGE WITHOUT NOTICE.

UNDER ARMOUR PERFORMANCE
2026