

# SOFTBALL

Spring/Summer 2022





UNDER ARMOUR

**THE ONLY  
WAY IS  
THROUGH.**







## VISION

---

TO INSPIRE YOU WITH PERFORMANCE  
SOLUTIONS YOU NEVER KNEW  
YOU NEEDED BUT CAN'T IMAGINE  
LIVING WITHOUT.

## MISSION

---

UNDER ARMOUR  
MAKES YOU BETTER.

## SOFTBALL —

### WOMEN'S/YOUTH

- 002 SOFTBALL UNIFORMS
- 034 SOFTBALL APPAREL
- 035 SOFTBALL BATTING GLOVES
- 036 SOFTBALL FOOTWEAR
- 037 SOFTBALL SOCKS
- 038 SOFTBALL BAGS
- 040 SOFTBALL PROTECTIVE
- 044 WOMEN'S AF TRAINING
- 050 UNIFORM ORDERING INFO





# SOFTBALL GAMEDAY SELECT

- Select Custom UA Team Uniforms
- Set jersey and pant pricing

## GAMEDAY SELECT PROGRAM DETAILS

- Jersey - fully decorated includes:
  - Team name (1 or 2 color Armourfuse® twill)
  - Front and back numbers (1 or 2 color Armourfuse® twill)
  - **Thief:** Sublimated inserts at sleeve ends and around neck
  - **Legend:** Braided or piped at sleeve ends and around placket or neck (1/2" or 3/16")
- Pant - fully decorated includes:
  - **Thief:** Sublimated insert down side seam
  - **Legend:** Braided or piped down side seam (1/2" or 3/16")
- All catalog fonts included
- 2", 3" or 4" Team Name // 3" or 4" Front Number // 6" or 8" Back Number
- Additional details on page 54



# GAMEDAY SELECT



BASEBALL SELECT SOFTBALL

Diamond mesh back  
is lightweight and  
highly breathable

custom sublimated  
neck and sleeve insets

Highly durable  
Diamond knit fabric





## THIEF FAUX JERSEYS

### LAST SEASON OFFERED

#### XS-2XL, OVERSIZE 3XL

FAUX 2 BUTTON	DESIGN	FABRIC	PRICE
US016JW (W)	XS-2XL	SOLID	\$145.00

FAUX PLACKET	DESIGN	FABRIC	PRICE
US010JW (W)	XS-2XL	SOLID	\$150.00
USP10JW (W)	XS-2XL	PINSTRIPES	\$180.00

- 100% Polyester - Diamond Knit Front + Diamond Mesh Back (Pinstripe version = Diamond Knit Back)
- Faux Placket front closure with functional top two buttons
- Sublimated inserts around neck and sleeves
- Size SM Measurements: body length 28", sleeve length 8.5", across chest width 18.5"

OVERSIZED SURCHARGE +\$5 PER SIZE

## THIEF V-NECK JERSEY

### LAST SEASON OFFERED

#### XS-2XL, OVERSIZE 3XL

V-NECK	DESIGN	FABRIC	PRICE
US012JW (W)	XS-2XL	SOLID	\$135.00
USP12JW (W)	XS-2XL	PINSTRIPES	\$165.00

- 100% Polyester - Diamond Knit Front + Diamond Mesh Back (Pinstripe version = Diamond Knit Back)
- Sublimated inserts around neck and sleeves
- Size SM Measurements: body length 28", sleeve length 8.5", across chest width 18.5"

OVERSIZED SURCHARGE +\$5 PER SIZE

## THIEF PANTS

### LAST SEASON OFFERED

#### XS-2XL, OVERSIZE 3XL

TAPERED	DESIGN	FABRIC	PRICE
US013PW (W)	XS-2XL	SOLID	\$100.00
USP13PW (W)	XS-2XL	PINSTRIPES	\$130.00

KNICKER	DESIGN	FABRIC	PRICE
US015PW (W)	XS-2XL	SOLID	\$100.00
USP15PW (W)	XS-2XL	PINSTRIPES	\$130.00

- 100% Polyester - Diamond Knit
- Tapered inseam = 30.5", Knicker inseam = 19"
- 2-ply reinforced knees + hamstrings
- Sublimated side inserts
- Custom inseam -2" or +2" (no charge)

OVERSIZED SURCHARGE +\$5 PER SIZE

#### JERSEY AND PANT COLORS:

WHT	VWH	BBG	GPH	BLK	PUR	MDN
RYL	VBL	FGR	DKO	RED	MAR	CRD

#### PINSTRIPES:

WHT/BLK	WHT/MDN	WHT/RYL	WHT/RED
---------	---------	---------	---------



FAUX PLACKET





# GAMEDAY SELECT



GAMEDAY SELECT BASEBALL



**FAUX PLACKET**



**V-NECK**

SHOWN WITH CUSTOM TEAM SCRIPT  
(NOT INCLUDED IN PRICE)



**V-NECK**



GAMEDAY SELECT UNIFORMS // ORDERING INFORMATION AND CUSTOMER SERVICE: 1-800-474-6118 // [www.uacustomuniforms.com](http://www.uacustomuniforms.com)

FILL-IN LIFECYCLE TIMING FOUND ON PAGE 57. DECORATION OPTIONS AND ORDERING INFORMATION ARE AVAILABLE ON PAGES 50-57.

UNDER ARMOUR® TEAM SS22  [UATEAMCATALOGS.COM](http://UATEAMCATALOGS.COM)



## GDS LEDGEND FAUX PLACKET JERSEY

LAST SEASON OFFERED

XS-2XL, OVERSIZE 3XL

FAUX PLACKET	DESIGN	FABRIC	PRICE
US004JW (W)	XS-2XL	SOLID	\$135.00
USP04JW (W)	XS-2XL	PINSTRIPES	\$165.00

- 100% Polyester - Diamond Knit Front + Diamond Mesh Back (Pinstripe version = Diamond Knit Back)
- Faux Placket front closure with functional top two buttons
- Size SM Measurements: body length 28", sleeve length 8.5", across chest width 18.5"

OVERSIZED SURCHARGE +\$5 PER SIZE

## LEGEND PANTS

LAST SEASON OFFERED

XS-2XL, OVERSIZE 3XL

TAPERED	DESIGN	FABRIC	PRICE
US005PW (W)	XS-2XL	SOLID	\$100.00
USP05PW (W)	XS-2XL	PINSTRIPES	\$130.00
KNICKER	DESIGN	FABRIC	PRICE
US005PW/K (W)	XS-2XL	SOLID	\$100.00
USP05PW/K (W)	XS-2XL	PINSTRIPES	\$130.00

- 100% Polyester - Diamond Knit
- Tapered inseam = 30.5", Knicker inseam = 19"
- 2-ply reinforced knees + hamstrings
- Custom inseam -2" or +2" (no charge)

OVERSIZED SURCHARGE +\$5 PER SIZE



FAUX PLACKET

### JERSEY AND PANT COLORS:

WHT	VWH	BGG	GPH	BLK	PUR	MDN
RYL	VBL	FGR	DKO	RED	MAR	CRD

### PINSTRIPES:

WHT/BLK	WHT/MDN	WHT/RYL	WHT/RED
---------	---------	---------	---------



GAMEDAY SELECT UNIFORMS // ORDERING INFORMATION AND CUSTOMER SERVICE: 1-800-474-6118 // [www.uacustomuniforms.com](http://www.uacustomuniforms.com)

FILL-IN LIFECYCLE TIMING FOUND ON PAGE 57. DECORATION OPTIONS AND ORDERING INFORMATION ARE AVAILABLE ON PAGES 50-57.









ARMOURFUSE® SOFTBALL

∞ UNDER ARMOUR® TEAM SS22  UATEAMCATALOGS.COM







# SOFTBALL ARMOURFUSE

- Brilliant, vibrant team colors permanently fused directly into textiles
- Limitless customization, all-inclusive pricing with exclusive UA designs and customized prints
- 37 different colors and 16 prints available
- 6 piece minimum order

**Showtime Jerseys:** 100% Polyester featuring a Diamond Knit front & Diamond Mesh back for breath ability.

**Gametime Jerseys:** 87% Polyester, 13% Elastane, featuring a full body lightweight Utility Mesh.



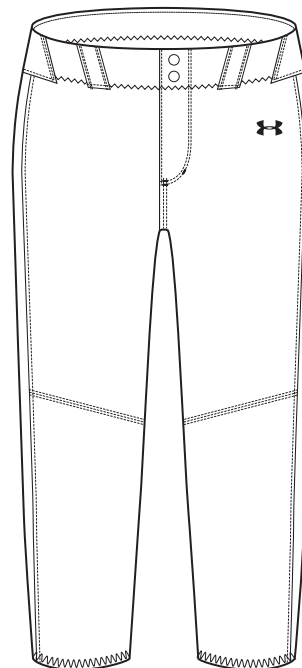
## AF SHOWTIME FAUX PLACKET JERSEY

XS-2XL, OVERSIZE 3XL

STYLE	SIZE	PACKAGE*	PRICE
UJSJX2W (W)	XS-2XL	SUBLIMATED	\$118.00
		1-COLOR TWILL	\$163.00
		2-COLOR TWILL	\$173.00

- 100% Polyester - Diamond Knit Front  
+ Diamond Mesh Back
- Faux Placket front closure with functional top  
two buttons
- Size SM Measurements: body length 28",  
sleeve length 8.5", across chest width 18.5"

\*PACKAGE INCLUDES TEAM NAME + FRONT & BACK NUMBERS  
ADDITIONAL TWILL OPTIONS FOUND ON PAGE 53



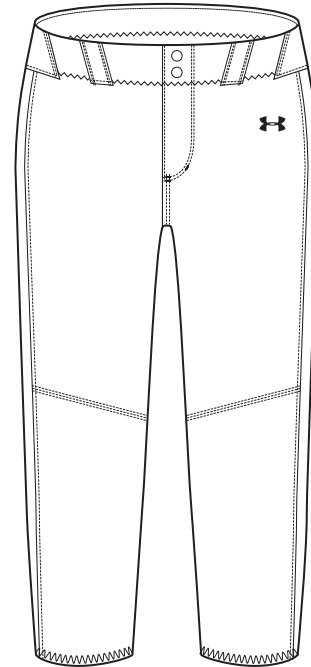
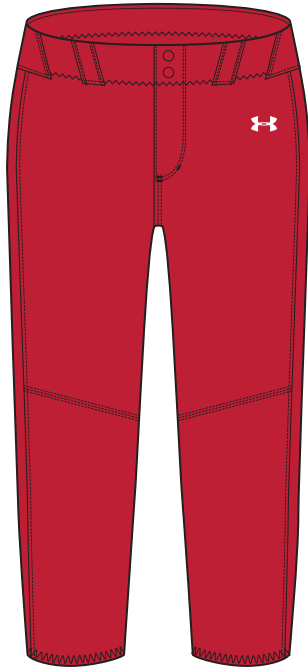
**WINDMILL**

**NEW DESIGN FIRST SHIP: 10/25/2021**

SHOWN WITH STOCK PANT, SEE PG 28

OVERSIZED SURCHARGE +\$5 PER SIZE // EXTENDED/SHORTENED LENGTHS OFFERED, SEE PAGE 55 FOR MORE INFO





## COMISKY

SHOWN WITH STOCK PANT, SEE PG 28

## TEQUILA SUNSET

SHOWN WITH STOCK PANT, SEE PG 28

OVERSIZED SURCHARGE +\$5 PER SIZE // EXTENDED/SHORTENED LENGTHS OFFERED, SEE PAGE 55 FOR MORE INFO



ARMOURFUSE® UNIFORMS // ORDERING INFORMATION AND CUSTOMER SERVICE: 1-800-594-9082 // [www.underarmourteamuniforms.com](http://www.underarmourteamuniforms.com)

FILL-IN LIFECYCLE TIMING FOUND ON PAGE 57. DECORATION OPTIONS AND ORDERING INFORMATION ARE AVAILABLE ON PAGES 50-57.



## AF SHOWTIME FAUX PLACKET JERSEY

XS-2XL, OVERSIZE 3XL

STYLE	SIZE	PACKAGE*	PRICE
UJSJX2W (W)	XS-2XL	SUBLIMATED	\$118.00
		1-COLOR TWILL	\$163.00
		2-COLOR TWILL	\$173.00

- 100% Polyester - Diamond Knit Front  
+ Diamond Mesh Back
- Faux Placket front closure with functional top  
two buttons
- Size SM Measurements: body length 28",  
sleeve length 8.5", across chest width 18.5"

\*PACKAGE INCLUDES TEAM NAME + FRONT & BACK NUMBERS  
ADDITIONAL TWILL OPTIONS FOUND ON PAGE 53



**TURNER**

SHOWN WITH GDS PANT, SEE PG 6

OVERSIZED SURCHARGE +\$5 PER SIZE // EXTENDED/SHORTENED LENGTHS OFFERED, SEE PAGE 55 FOR MORE INFO





**CAMDEN**

SHOWN WITH GDS PANT, SEE PG 4



**SHEA**

SHOWN WITH GDS PANT, SEE PG 4

OVERSIZED SURCHARGE +\$5 PER SIZE // EXTENDED/SHORTENED LENGTHS OFFERED, SEE PAGE 55 FOR MORE INFO



ARMOURFUSE® UNIFORMS // ORDERING INFORMATION AND CUSTOMER SERVICE: 1-800-594-9082 // [www.underarmourteamuniforms.com](http://www.underarmourteamuniforms.com)

FILL-IN LIFECYCLE TIMING FOUND ON PAGE 57. DECORATION OPTIONS AND ORDERING INFORMATION ARE AVAILABLE ON PAGES 50-57.



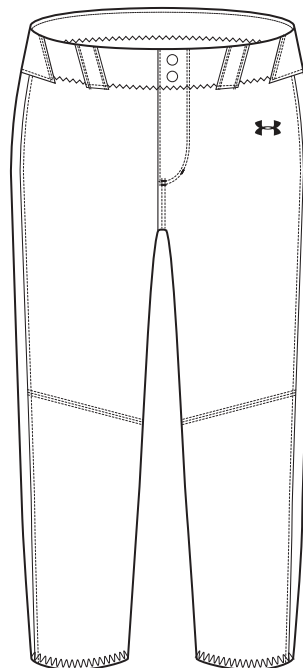
## AF SHOWTIME V-NECK JERSEY

XS-2XL, OVERSIZE 3XL

STYLE	SIZE	PACKAGE*	PRICE
UJSJV3W (W)	XS-2XL	SUBLIMATED	\$103.00
		1-COLOR TWILL	\$148.00
		2-COLOR TWILL	\$158.00

- 100% Polyester - Diamond Knit Front  
+ Diamond Mesh Back
- Size SM Measurements: body length 28",  
sleeve length 8.5", across chest width 18.5"

\*PACKAGE INCLUDES TEAM NAME + FRONT & BACK NUMBERS  
ADDITIONAL TWILL OPTIONS FOUND ON PAGE 53



**WINDMILL**

**NEW DESIGN FIRST SHIP: 10/25/2021**

SHOWN WITH STOCK PANT, SEE PG 28

OVERSIZED SURCHARGE +\$5 PER SIZE // **EXTENDED/SHORTENED LENGTHS OFFERED, SEE PAGE 55 FOR MORE INFO**



ARMOURFUSE™ UNIFORMS // ORDERING INFORMATION AND CUSTOMER SERVICE: 1-800-594-9082 // [www.underarmourteamuniforms.com](http://www.underarmourteamuniforms.com)

FILL-IN LIFECYCLE TIMING FOUND ON PAGE 57. DECORATION OPTIONS AND ORDERING INFORMATION ARE AVAILABLE ON PAGES 50-57.





## COMISKY

SHOWN WITH STOCK PANT, SEE PG 28



## TEQUILA SUNSET

SHOWN WITH STOCK PANT, SEE PG 28



## SCOUT

SHOWN WITH STOCK PANT, SEE PG 28

OVERSIZED SURCHARGE +\$5 PER SIZE // EXTENDED/SHORTENED LENGTHS OFFERED, SEE PAGE 55 FOR MORE INFO



ARMOURFUSE® UNIFORMS // ORDERING INFORMATION AND CUSTOMER SERVICE: 1-800-594-9082 // [www.underarmourteamuniforms.com](http://www.underarmourteamuniforms.com)

FILL-IN LIFECYCLE TIMING FOUND ON PAGE 57. DECORATION OPTIONS AND ORDERING INFORMATION ARE AVAILABLE ON PAGES 50-57.





## CAMDEN

SHOWN WITH GDS PANT, SEE PG 4

## AF SHOWTIME V-NECK JERSEY

XS-2XL, OVERSIZE 3XL

STYLE	SIZE	PACKAGE*	PRICE
UJSJV3W (W)	XS-2XL	SUBLIMATED	\$103.00
		1-COLOR TWILL	\$148.00
		2-COLOR TWILL	\$158.00

- 100% Polyester - Diamond Knit Front  
+ Diamond Mesh Back
- Size SM Measurements: body length 28",  
sleeve length 8.5", across chest width 18.5"

\*PACKAGE INCLUDES TEAM NAME + FRONT & BACK NUMBERS  
ADDITIONAL TWILL OPTIONS FOUND ON PAGE 53

OVERSIZED SURCHARGE +\$5 PER SIZE // EXTENDED/SHORTENED LENGTHS OFFERED, SEE PAGE 55 FOR MORE INFO

ARMOURFUSE™ UNIFORMS // ORDERING INFORMATION AND CUSTOMER SERVICE: 1-800-594-9082 // [www.underarmourteamuniforms.com](http://www.underarmourteamuniforms.com)

FILL-IN LIFECYCLE TIMING FOUND ON PAGE 57. DECORATION OPTIONS AND ORDERING INFORMATION ARE AVAILABLE ON PAGES 50-57.





**SHEA**

SHOWN WITH GDS PANT, SEE PG 4



**MURPHY**

SHOWN WITH STOCK PANT, SEE PG 28

OVERSIZED SURCHARGE +\$5 PER SIZE // EXTENDED/SHORTENED LENGTHS OFFERED, SEE PAGE 55 FOR MORE INFO



ARMOURFUSE® UNIFORMS // ORDERING INFORMATION AND CUSTOMER SERVICE: 1-800-594-9082 // [www.underarmourteamuniforms.com](http://www.underarmourteamuniforms.com)

FILL-IN LIFECYCLE TIMING FOUND ON PAGE 57. DECORATION OPTIONS AND ORDERING INFORMATION ARE AVAILABLE ON PAGES 50-57.



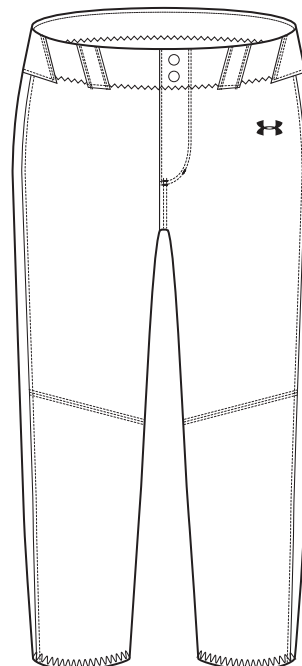
## AF GAMETIME FAUX PLACKET JERSEY

XS-2XL, OVERSIZE 3XL, YSM-YXL

STYLE	SIZE	PACKAGE*	PRICE
UJSJX1W (W)	XS-2XL	SUBLIMATED	\$103.00
		1-COLOR TWILL	\$148.00
		2-COLOR TWILL	\$158.00
UJBX1Y (Y)	YSM-YXL	SUBLIMATED	\$98.00

- 87% Polyester, 13% Elastane - Utility Mesh
- Faux Placket front closure with functional top two buttons
- Size SM Measurements: body length 28", sleeve length 8.5", across chest width 18.5"

\*PACKAGE INCLUDES TEAM NAME + FRONT & BACK NUMBERS  
ADDITIONAL TWILL OPTIONS FOUND ON PAGE 53



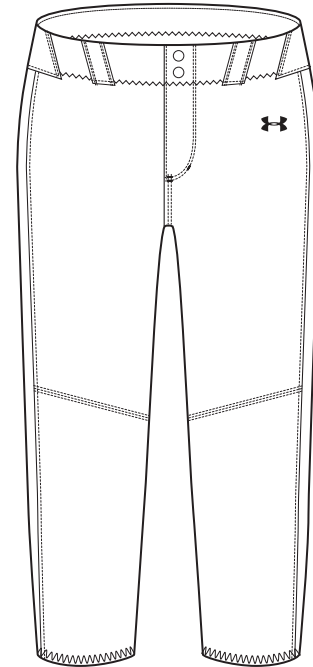
**WINDMILL**

**NEW DESIGN FIRST SHIP: 10/25/2021**

SHOWN WITH STOCK PANT, SEE PG 28

OVERSIZED SURCHARGE +\$5 PER SIZE // EXTENDED/SHORTENED LENGTHS OFFERED, SEE PAGE 55 FOR MORE INFO





## COMISKY

SHOWN WITH STOCK PANT, SEE PG 28

## TEQUILA SUNSET

SHOWN WITH STOCK PANT, SEE PG 28

OVERSIZED SURCHARGE +\$5 PER SIZE // EXTENDED/SHORTENED LENGTHS OFFERED, SEE PAGE 55 FOR MORE INFO



ARMOURFUSE® UNIFORMS // ORDERING INFORMATION AND CUSTOMER SERVICE: 1-800-594-9082 // [www.underarmourteamuniforms.com](http://www.underarmourteamuniforms.com)

FILL-IN LIFECYCLE TIMING FOUND ON PAGE 57. DECORATION OPTIONS AND ORDERING INFORMATION ARE AVAILABLE ON PAGES 50-57.

## AF GAMETIME FAUX PLACKET JERSEY

XS-2XL, OVERSIZE 3XL, YSM-YXL

STYLE	SIZE	PACKAGE*	PRICE
UJSJX1W (W)	XS-2XL	SUBLIMATED	\$103.00
		1-COLOR TWILL	\$148.00
		2-COLOR TWILL	\$158.00
UJBX1Y (Y)	YSM-YXL	SUBLIMATED	\$98.00

- 87% Polyester, 13% Elastane - Utility Mesh
- Faux Placket front closure with functional top two buttons
- Size SM Measurements: body length 28", sleeve length 8.5", across chest width 18.5"

\*PACKAGE INCLUDES TEAM NAME + FRONT & BACK NUMBERS  
ADDITIONAL TWILL OPTIONS FOUND ON PAGE 53



**TURNER**

SHOWN WITH GDS PANT, SEE PG 6

OVERSIZED SURCHARGE +\$5 PER SIZE // EXTENDED/SHORTENED LENGTHS OFFERED, SEE PAGE 55 FOR MORE INFO





**CAMDEN**

SHOWN WITH GDS PANT, SEE PG 6



**SHEA**

SHOWN WITH STOCK PANT, SEE PG 28

OVERSIZED SURCHARGE +\$5 PER SIZE // EXTENDED/SHORTENED LENGTHS OFFERED, SEE PAGE 55 FOR MORE INFO



ARMOURFUSE® UNIFORMS // ORDERING INFORMATION AND CUSTOMER SERVICE: 1-800-594-9082 // [www.underarmourteamuniforms.com](http://www.underarmourteamuniforms.com)

FILL-IN LIFECYCLE TIMING FOUND ON PAGE 57. DECORATION OPTIONS AND ORDERING INFORMATION ARE AVAILABLE ON PAGES 50-57.

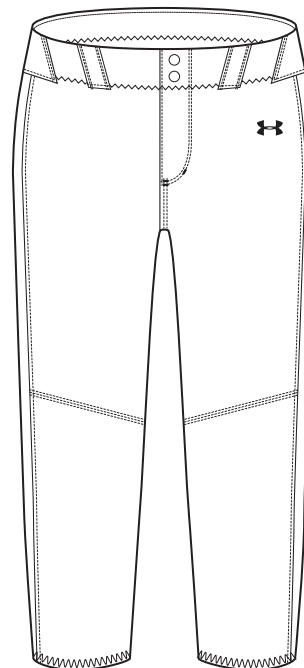
## AF GAMETIME V-NECK JERSEY

XS-2XL, OVERSIZE 3XL, YSM-YXL

STYLE	SIZE	PACKAGE*	PRICE
UJSJV2W (W)	XS-2XL	SUBLIMATED	\$88.00
		1-COLOR TWILL	\$133.00
		2-COLOR TWILL	\$143.00
UJBIV2Y (Y)	YSM-YXL	SUBLIMATED	\$83.00

- 87% Polyester, 13% Elastane - Utility Mesh
- Size SM Measurements: body length 28", sleeve length 8.5", across chest width 18.5"

\*PACKAGE INCLUDES TEAM NAME + FRONT & BACK NUMBERS  
ADDITIONAL TWILL OPTIONS FOUND ON PAGE 53



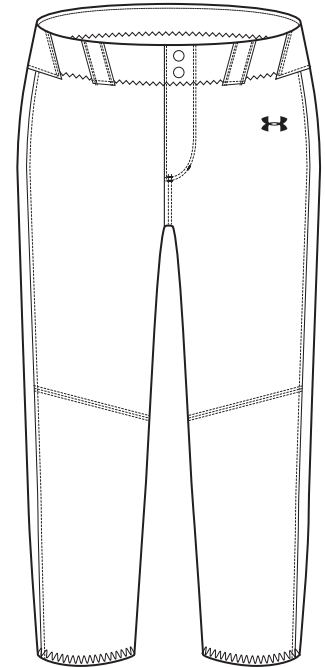
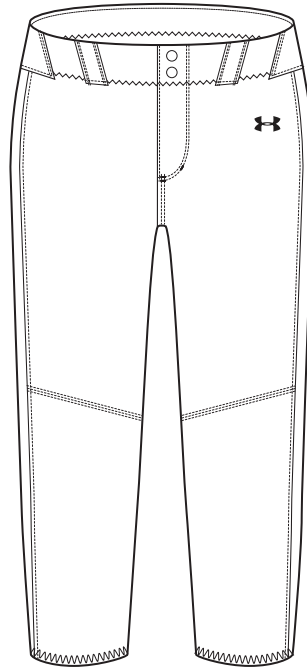
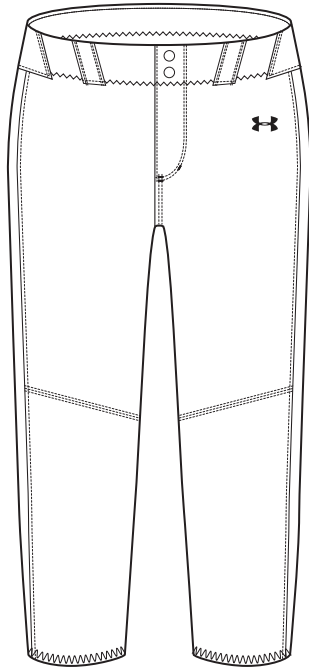
**WINDMILL**

**NEW DESIGN FIRST SHIP: 10/25/2021**

SHOWN WITH STOCK PANT, SEE PG 28

OVERSIZED SURCHARGE +\$5 PER SIZE // **EXTENDED/SHORTENED LENGTHS OFFERED, SEE PAGE 55 FOR MORE INFO**





## COMISKY

SHOWN WITH STOCK PANT, SEE PG 28

## TEQUILA SUNSET

SHOWN WITH STOCK PANT, SEE PG 28

## SCOUT

SHOWN WITH STOCK PANT, SEE PG 28

OVERSIZED SURCHARGE +\$5 PER SIZE // EXTENDED/SHORTENED LENGTHS OFFERED, SEE PAGE 55 FOR MORE INFO



ARMOURFUSE® UNIFORMS // ORDERING INFORMATION AND CUSTOMER SERVICE: 1-800-594-9082 // [www.underarmourteamuniforms.com](http://www.underarmourteamuniforms.com)

FILL-IN LIFECYCLE TIMING FOUND ON PAGE 57. DECORATION OPTIONS AND ORDERING INFORMATION ARE AVAILABLE ON PAGES 50-57.


**CAMDEN**

SHOWN WITH STOCK PANT, SEE PG 28

## AF GAMETIME V-NECK JERSEY

XS-2XL, OVERSIZE 3XL, YSM-YXL

STYLE	SIZE	PACKAGE*	PRICE
UJSJV2W (W)	XS-2XL	SUBLIMATED	\$88.00
		1-COLOR TWILL	\$133.00
		2-COLOR TWILL	\$143.00
UJBIV2Y (Y)	YSM-YXL	SUBLIMATED	\$83.00

- 87% Polyester, 13% Elastane - Utility Mesh
- Size SM Measurements: body length 28", sleeve length 8.5", across chest width 18.5"

\*PACKAGE INCLUDES TEAM NAME + FRONT & BACK NUMBERS  
ADDITIONAL TWILL OPTIONS FOUND ON PAGE 53

OVERSIZED SURCHARGE +\$5 PER SIZE // EXTENDED/SHORTENED LENGTHS OFFERED, SEE PAGE 55 FOR MORE INFO


ARMOURFUSE® UNIFORMS // ORDERING INFORMATION AND CUSTOMER SERVICE: 1-800-594-9082 // [www.underarmourteamuniforms.com](http://www.underarmourteamuniforms.com)

FILL-IN LIFECYCLE TIMING FOUND ON PAGE 57. DECORATION OPTIONS AND ORDERING INFORMATION ARE AVAILABLE ON PAGES 50-57.





**SHEA**

SHOWN WITH STOCK PANT, SEE PG 28



**MURPHY**

SHOWN WITH GDS PANT, SEE PG 6

OVERSIZED SURCHARGE +\$5 PER SIZE // EXTENDED/SHORTENED LENGTHS OFFERED, SEE PAGE 55 FOR MORE INFO



ARMOURFUSE® UNIFORMS // ORDERING INFORMATION AND CUSTOMER SERVICE: 1-800-594-9082 // [www.underarmourteamuniforms.com](http://www.underarmourteamuniforms.com)

FILL-IN LIFECYCLE TIMING FOUND ON PAGE 57. DECORATION OPTIONS AND ORDERING INFORMATION ARE AVAILABLE ON PAGES 50-57.





# SOFTBALL STOCK

- Unique designs and advanced technology in stock
- Pre-set designs, ready to ship
- Best-in-class stock fabrications for all levels of play



## PACKAGE DECORATION

	1COLOR	2COLOR
<b>SCREENPRINT</b>	<b>\$15.00</b>	<b>\$25.00</b>
Team Name, Front/Back Numbers		
<b>TACKLE TWILL</b>	<b>\$45.00</b>	<b>\$55.00</b>
Team Name, Front/Back Numbers		

Additional Stock Options on page 53-54.



## ICON FAUX PLACKET JERSEY

XS-2XL, YSM-YXL

STYLE	SIZE	PACKAGE	PRICE
USJ114W (W)	XS-2XL	BLANK	\$52.00
		1-COLOR TWILL	\$97.00
		2-COLOR TWILL	\$107.00
UBJ114Y (Y)	YSM-YXL	BLANK	\$47.00

- 100% Polyester - Diamond Knit Front + Diamond Mesh Back
- Size SM Measurements: body length 28", sleeve length 8.5", across chest width 18.5"

UA RECOMMENDS THAT THIS STYLE BE DECORATED WITH TACKLE TWILL ONLY

\*PACKAGE INCLUDES TEAM NAME + FRONT & BACK NUMBERS



WH

BG



## THE ACE BELTLESS KNICKER PANT

XS-2XL, OVERSIZE 3XL, YSM-YXL

STYLE	SIZE	PACKAGE	PRICE
USP123W (W)	XS-2XL	BLANK	\$54.00

- 100% Polyester- Diamond Knit
- Beltless elastic waist band with drawstring
- Knicker Inseam (W) 18.5"
- 2-Ply reinforced knee



BK

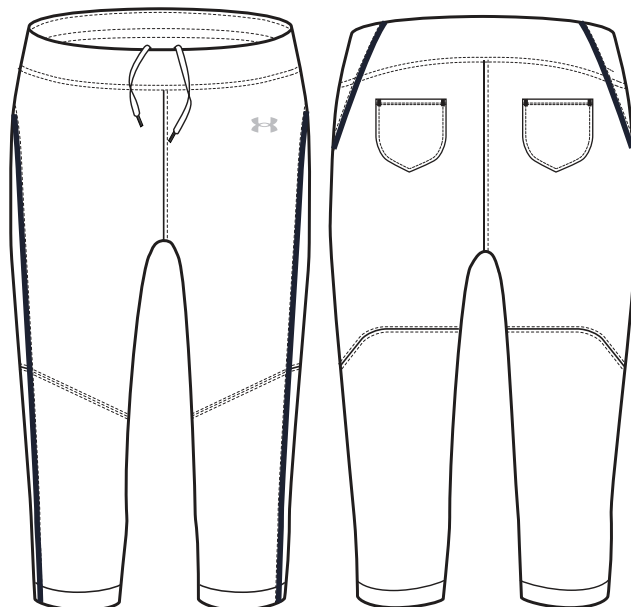
WH

BG

NA

SC

RO



## ICON FAUX PLACKET JERSEY

XS-2XL, YSM-YXL

STYLE	SIZE	PACKAGE	PRICE
USJ114W (W)	XS-2XL	BLANK	\$52.00
		1-COLOR TWILL	\$97.00
		2-COLOR TWILL	\$107.00
UBJ114Y (Y)	YSM-YXL	BLANK	\$47.00

- 100% Polyester - Diamond Knit Front + Diamond Mesh Back
- Size SM Measurements: body length 28", sleeve length 8.5", across chest width 18.5"

UA RECOMMENDS THAT THIS STYLE BE DECORATED WITH TACKLE TWILL ONLY

\*PACKAGE INCLUDES TEAM NAME + FRONT & BACK NUMBERS



WH

BG

## ICON KNICKER PANT

XS-2XL, OVERSIZE 3XL, YSM-YXL

STYLE	SIZE	PACKAGE	PRICE
USP522W (W)	XS-2XL	BLANK	\$52.00
USP522G (G)	YSM-YXL	BLANK	\$47.00

- 100% Polyester - Diamond Knit
- Knicker inseam (W) 19" (G) 15"
- 2-ply reinforced knee

AFTER-BRAID +\$15. SEE PAGE 54 FOR DETAILS



BK

WH

BG

NA

SC

RO



SHOWN WITH AFTER-BRAID OPTION ON JERSEY AND PANT  
(NOT INCLUDED IN PRICE)





## IGNITE 2-BUTTON JERSEY

XS-2XL, YSM-YXL

STYLE	SIZE	PACKAGE	PRICE
USJ113W (W)	XS-2XL	BLANK	\$47.00
		1-COLOR SCREEN	\$62.00
		2-COLOR SCREEN	\$72.00
		1-COLOR TWILL	\$92.00
		2-COLOR TWILL	\$102.00
UBJ113Y (Y)	YSM-YXL	BLANK	\$42.00

- 100% Polyester - Base Mesh
- Size SM Measurements: body length 28", sleeve length 8.5", across chest width 18.5"

\*PACKAGE INCLUDES TEAM NAME + FRONT & BACK NUMBERS



BK/WH/BG NA/WH/BG SC/WH/BG RO/WH/BG



DG/WH/BG MA/WH/BG PU/WH/BG OR/WH/BG



SHOWN WITH ICON KNICKER PANT  
PANT SHOWN WITH AFTER-BRAID (NOT INCLUDED IN PRICE)



## IGNITE V-NECK JERSEY

XS-2XL, YSM-YXL

STYLE	SIZE	PACKAGE	PRICE
USJ112W (W)	XS-2XL	BLANK	\$37.00
		1-COLOR SCREEN	\$52.00
		2-COLOR SCREEN	\$62.00
		1-COLOR TWILL	\$82.00
		2-COLOR TWILL	\$92.00
UBJ112Y (Y)	YSM-YXL	BLANK	\$32.00

- 100% Polyester - Base Mesh
- Size SM Measurements: body length 28", sleeve length 8.5", across chest width 18.5"

\*PACKAGE INCLUDES TEAM NAME + FRONT & BACK NUMBERS



SHOWN WITH ICON KNICKER PANT





NOTES:

This image shows a full page of blank, lined paper. It features approximately 28 evenly spaced horizontal grey lines across its entire width, providing a guide for handwriting or typing. The paper itself is a clean, off-white color. There are no margins, text, or other markings present on the page.

## UA NEXT 2-BUTTON SOFTBALL JERSEY

LAST SEASON OFFERED, CLOSEOUT PRICING AVAILABLE

FIRST SHIP: C/O // SM-2XL, YSM-YLG

STYLE	SIZE	BLANK	DECORATION PACKAGE*		
			1-99 UNITS	100-249 UNITS	250+ UNITS
USJ620W (W)	SM-2XL	\$32.00	\$47.00	\$45.50	\$44.00
USJ620G (G)	YSM-YLG	\$30.00	\$45.00	\$43.50	\$42.00

- 100% Polyester performance knit mock mesh
- Moisture management to keep you dry and at peak performance

\*PACKAGE INCLUDES 2-COLOR SCREEN PRINT TEAM NAME + 1-COLOR DURATEK BACK NUMBERS



## UA NEXT SOFTBALL PANT

LAST SEASON OFFERED, CLOSEOUT PRICING AVAILABLE

XS-2XL, YSM-YXL

STYLE	SIZE	PACKAGE	PRICE
USP7COW (W)	XS-2XL	BLANK	\$36.00
USP7COG (G)	YSM-YXL	BLANK	\$33.00

- 100% Polyester double knit
- UA branded internal waistband





## UA NEXT V-NECK SOFTBALL JERSEY

LAST SEASON OFFERED, CLOSEOUT PRICING AVAILABLE

FIRST SHIP: C/O // SM-2XL, YSM-YLG

STYLE	SIZE	BLANK	DECORATION PACKAGE*		
			1-99 UNITS	100-249 UNITS	250+ UNITS
USJ6V0W (W)	SM-2XL	\$23.00	\$38.00	\$36.50	\$35.00
USJ6V0G (G)	YSM-YLG	\$21.00	\$36.00	\$34.50	\$33.00

- 100% Polyester pique knit
- Moisture management to keep you dry and at peak performance

\*PACKAGE INCLUDES 2-COLOR SCREEN PRINT TEAM NAME + 1-COLOR DURATEK BACK NUMBERS



## UA NEXT SOFTBALL PANT

LAST SEASON OFFERED, CLOSEOUT PRICING AVAILABLE

XS-2XL, YSM-YXL

STYLE	SIZE	PACKAGE	PRICE
USP7COW (W)	XS-2XL	BLANK	\$36.00
USP7COG (G)	YSM-YXL	BLANK	\$33.00

- 100% Polyester double knit
- UA branded internal waistband



# APPAREL

PREBOOK ONLY

**1356906**

## UA SOFTBALL ISOCHILL SLIDING SHORTS

\$40.00 | **COMPRESSION** | XXS-2XL

**GIRLS: 1356910** | \$35.00 | YXS-YXL

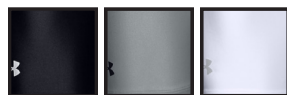
FIRST SHIP: C/O

- IsoChill fabric is cool to the touch
- 4-way stretch throughout
- Yoga style waistband for comfort and support

87% NYLON, 13% ELASTANE

**heatgear™**

G = GIRLS OFFERING



001 G  
BLK

075 G  
BBG  
(GIRLS ONLY)

100  
WHT



PREBOOK ONLY

**1356903**

## UA VANISH SOFTBALL PANT

\$40.00 | **FITTED** | XS-2XL

**GIRLS: 1356907** | \$35.00 | YXS-YXL

FIRST SHIP: C/O

- Vanish Fabric is lightweight and durable with 4-way stretch
- Double layered fabric in knee and seat
- Two back pockets
- Silicon waistband helps keep jersey tucked in

87% NYLON, 13% ELASTANE

**heatgear™**

G = GIRLS OFFERING



001 G  
BLK

075 G  
BBG

100 G  
WHT

410  
MDN





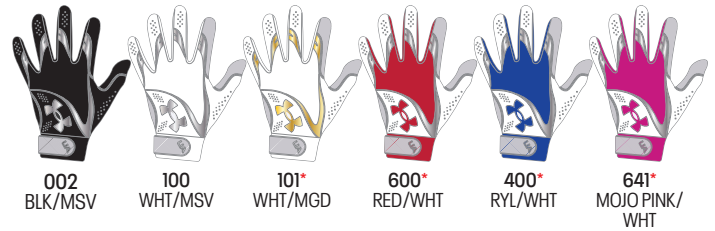
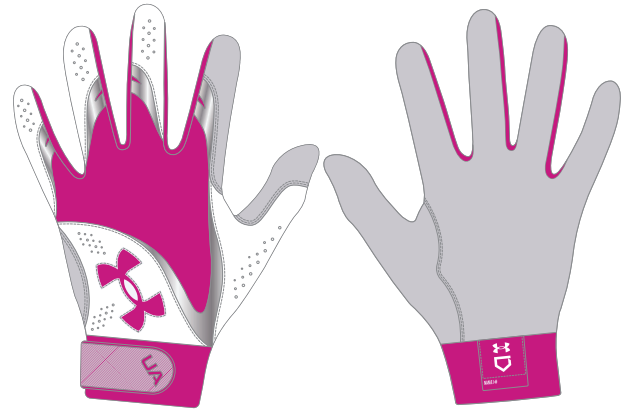
## 1355539 UA W'S RADAR

\$25.00 | COMES IN PAIRS | SM-XL

FIRST SHIP: C/O

- Durable synthetic leather palm adds durability without compromising feel
- UA Heatgear fabric with 4-way stretch for a cool, comfortable feel
- Perforated overlays add support & durability
- Finger perforations for added breathability
- Elastic Cuff provides wrist support and a locked-in feel

**\*PREBOOK ONLY**



# FOOTWEAR

**NEW****3024328****UA GLYDE MT****\$90.00 | SIZES: 5.5-12****FIRST SHIP: 10/1/2021**

- Durable synthetic upper & lightweight textile toe provide sneaker-like comfort
- Soft suede-like panels for enhanced breathability in the midfoot
- Added cushion around the heel & tongue provide ultimate, step-in comfort
- Abrasion-resistant TPU film on toe cap for enhanced protection & durability
- Plush sockliner molds perfectly to your foot
- Charged Cushioning® midsole converts impact into explosive speed & power on the diamond
- Lightweight, low-profile outsole features 9 metal cleats for optimal speed & power

001  
BLK/BLK/WHT100  
WHT/WHT/MSV101  
WHT/WHT/RYL102  
WHT/WHT/RED103  
WHT/WHT/MGD**NEW****3024329****UA GLYDE MT TPU****\$80.00 | SIZES: 5.5-12****FIRST SHIP: 10/1/2021**

- Durable synthetic upper & lightweight textile toe provide sneaker-like comfort
- Padded ankle collar & tongue construction for increased comfort
- Abrasion-resistant TPU film on toe cap for enhanced protection & durability
- Full-length EVA midsole provides ultimate cushion, shock absorption & cleat dispersion
- TPU cleats placed under the heel & forefoot for lightweight traction

**102 & 103 PREBOOK ONLY**001  
BLK/BLK/WHT101  
WHT/WHT/MSV102  
WHT/WHT/RYL103  
WHT/WHT/RED



**NEW**

## 3024330 UA GLYDE RM

\$40.00 | SIZES: 5.5-11, 12

**GIRLS: 3024331** | \$30.00 | 10K, 11K, 12K, 13K, 1-6

FIRST SHIP: 10/1/2021

- Durable synthetic upper & lightweight textile toe provide sneaker-like comfort
- Padded ankle collar & tongue construction for increased comfort
- Abrasion-resistant synthetic toe cap for enhanced protection & durability
- Full-length EVA midsole provides ultimate cushion, shock absorption & cleat dispersion
- Rubber molded cleats provide aggressive traction on all surfaces with a lightweight, comfortable feel

G = GIRLS OFFERING

**PREBOOK ONLY**



001  
BLK/BLK/WHT



100  
WHT/WHT/MSV



101  
WHT/WHT/CER

# SOCKS

## 1270244 UA TEAM OVER-THE-CALF

\$9.99 | SINGLE PAIR | MD, LG, XL

**YOUTH: 1270245** | \$8.99 | YLG

FIRST SHIP: C/O // LAST SHIP: 3/15/2022

- Strategic Cushion protects high-impact areas of feet
- Embedded Arch Support helps reduce foot fatigue
- ArmourDry™ Material wicks moisture, accelerates evaporation
- ArmourBlock® Technology helps prevent growth of odor-causing bacteria

84% POLYESTER, 14% NYLON, 2% SPANDEX

Y = YOUTH OFFERING

609/MAR NOT SHOWN



001 BLK/WHT 040 GPH/BLK 100 WHT/BLK 301 GRN/WHT 400 RYL/WHT 410 MDN/WHT



500 PUR/WHT 600 RED/WHT 625 CRD/WHT 654 TPK/BLK 750 SGD/BLK

## BAGS

**1350105****UA YARD BATPACK****\$80.00****FIRST SHIP 001: C/O, 002: 10/1/2021**

- UA Storm technology delivers an element-battling, highly water-resistant finish
- Foam padded back panel for enhanced comfort & breathability
- Soft tricot-lined front valuables pocket & a hook & loop section for batting glove storage
- Built-in fence hook for on field organization
- Airvent shoe compartment on front is embroidery compatible for customization
- Molded sunglasses pocket for added protection
- Second bag strap clip for multiple ways to carry
- XL capacity holds 4 bats, cleats, batting gloves, valuables, gloves & water bottle

**STORM**001  
BLK/WHT002  
BLK/HVY**NEW****1369318****UA UTILITY PRINT BATPACK****\$65.00****FIRST SHIP: 10/1/2021**

- UA Storm technology delivers an element-battling, highly water-resistant finish
- Foam padded back panel for enhanced comfort & breathability
- Soft tricot-lined front valuables pocket & a hook & loop section for batting glove storage
- Built-in fence hook for on field organization
- Airvent shoe compartment on front is embroidery compatible for customization
- Second bag strap clip for multiple ways to carry
- Large capacity holds 4 bats, cleats, batting gloves, valuables, gloves & water bottle

**STORM**001  
BLK/HVY035  
STL/GLD600  
RED/WHT400  
RYL/WHT

**NEW****1365313****UA ACE2 T-BALL BATPACK****\$40.00****FIRST SHIP: 10/1/2021**

- UA Storm technology delivers an element-battling, highly water-resistant finish
- Foam padded back panel for enhanced comfort & breathability
- Soft tricot-lined front valuables pocket & a hook & loop section for batting glove storage
- Built-in fence hook for on field organization
- Airvent shoe compartment on front is embroidery compatible for customization
- Small capacity holds 2 bats, cleats, batting gloves, valuables, gloves & water bottle
- Ideal size for ages 4-7
- Top grab handle

**STORM**002  
BLK/HVY**NEW****1365312****UA BASEBALL WHEELED BAG****\$150.00****FIRST SHIP: 10/1/2021**

- UA Storm technology delivers an element-battling, highly water-resistant finish
- Multiple options on the go including shoulder straps, grab handles, wheels
- Big enough for even catcher's gear, with separate compartments for your helmet and cleats
- Side panel is completely removable for team or player embellishment
- Separate storage for up to 6 bats

**STORM**001  
BLK/WHT



## PROTECTIVE

## UAHG3A UA CONVERGE CATCHING HELMET

\$225.00 | 7-7 ½"

**YOUTH: UAHG3Y** | \$200.00 | 6 ¼-7"

FIRST SHIP: C/O

- Professional/college level catching helmet
- Large scoop vent for ventilation and heat management
- Patented I-BAR VISION™ steel cage increases player's sight lines by using flattened bars which also increase the strength of the cage
- Cage not mounted to forehead for better force re-direction
- Removable, washable, breathable, antimicrobial liner system



**BK**  
BLK/WHT



**NA**  
NVY/WHT



**SC**  
SCR/WHT



**RO**  
RYL/WHT

## UAWCP2-AL UA WOMEN'S PRO CHEST PROTECTOR

\$225.00 | 16"

**UAWCP2-A** | \$225.00 | 14 ½"

FIRST SHIP: C/O

- Professional women's specific softball chest protector
- Two optional women specific light weight fully moldable and adjustable shoulder extensions to customize your protection
- Moldable plastic inserts in the throat, sternum, and shoulders to disperse impacts and help the chest protector mold to your body
- Low rebound memory foam to deaden blocked balls
- Breathable mesh backing
- Moisture wicking, lightweight harness with four points of adjustment
- AEGIS Microbe Shield™ removes unwanted bacteria and odors



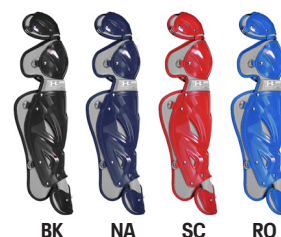
## UAWLG2-AL UA WOMEN'S PRO LEG GUARDS

\$200.00 | 15 ½"

**UAWLG2-A** | \$200.00 | 14 ½"

FIRST SHIP: C/O

- Women's professional leg guards
- Double knee design for increased protection
- High impact PE plastic components with extra thick plastic in high use locations
- Large vent holes in shin and knees along with perforated foam for breathability
- Gel knee pad absorbs impacts
- Extra wide neoprene straps securely hold leg guards in place
- Removable second toe
- AEGIS Microbe Shield™ removes unwanted bacteria and odors



# PROTECTIVE

## UABH100MM UA MATTE MOLDED BATTING HELMET

\$45.00 | 6½-7½ (OSFA)

**YOUTH: UABH110MM | \$45.00 | 6¾ & UNDER (OSFA)**

FIRST SHIP: C/O

- Featuring a One Size Fits All dual density foam liner system.
- The liner is breathable, moisture wicking, and none of the padding blocks any of the large vent ports
- Pony-tail channel built into padding for softball players
- The shell, constructed from durable ABS plastic, has 12 large vent holes for maximum breathability
- The shell is designed to deflect balls upon impact, provides extended cheek bone protection and coverage to protect a player's brain stem in the back of the neck
- Hardware is pre-mounted in the helmet making it ready to accept a batting helmet chin strap or batting helmet face guard
- Lower batting helmet chinstrap snap is removable



## UABH2 100-M UA CONVERGE MATTE BATTING HELMET

\$60.00 | 6½-7½ (OSFA)

**YOUTH: UABH2 110-M | \$60.00 | 6¾ & UNDER (OSFA)**

FIRST SHIP: C/O

- The UA Converge batting helmet features a completely updated shell with ridges and corrugations for added strength
- The large ventilation ports and HeatGear™ liner keeps players cool and dry
- If a softball or baseball cage is needed, the hardware is premounted on the helmet for easy attachment.
- Foam and fabric treated with antimicrobial to remove unwanted bacteria and odors
- The Adult and Youth feature a standard OSFA liner





**NEW****UABHFGS3  
SOFTBALL BATTING HELMET CAGE****\$30.00****FIRST SHIP: 10/1/2021**

- New and improved cage for Fastpitch Softball
- Less steel = lighter weight
- Maximum vision with necessary protective coverage
- For Softball only – not to be used for Baseball







Women's Armourfuse® Training gear is offered in customizable designs for tees, shorts, and baselayer. Available in compression and loose fits. Ideal for training days, travel, shooting shirts, tournaments, and game uniforms across all sports.

# ARMOURFUSE

- Brilliant, vibrant team colors permanently fused directly into textiles
- Limitless customization, all-inclusive pricing with exclusive UA designs and customized prints
- 37 different colors and 16 prints available
- 6 piece minimum order



# AF TRAINING HOODY

XS-2XL, OVERSIZE 3XL, YSM-YXL

HOODY	SIZE	PRICE
UJGSLHW (W)	XS-2XL	\$118.00
UJGSLHY (Y)	YSM-YXL	\$108.00

OVERSIZED SURCHARGE +\$5 PER SIZE  
ADDITIONAL LENGTH OPTIONS FOUND ON PAGE 55



SPRINT



UA VITAL



UA ECLIPSE



SCOUT



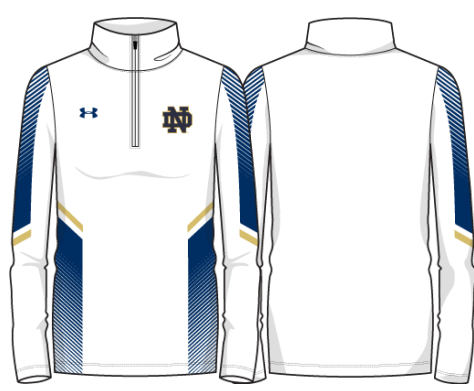


# AF TRAINING ½ ZIP

XS-2XL, OVERSIZE 3XL

½ ZIP  
UJGHZPW (W) XS-2XL \$93.00

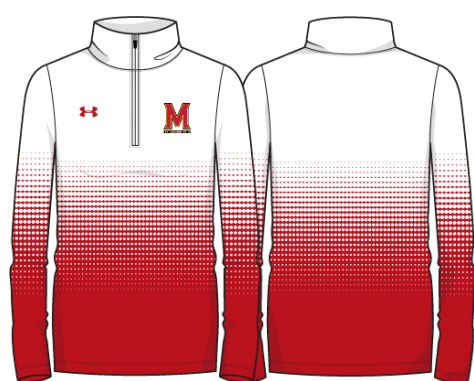
OVERSIZED SURCHARGE +\$5 PER SIZE  
ADDITIONAL LENGTH OPTIONS FOUND ON PAGE 55



SPRINT



UA VITAL



UA ECLIPSE



SCOUT

## AF TRAINING SS

XS-2XL, OVERSIZE 3XL, YSM-YXL

### LOOSE SS T

UJGJSTW (W)	XS-2XL	\$58.00
UJGJSTY (Y)	YSM-YXL	\$53.00

OVERSIZED SURCHARGE +\$5 PER SIZE  
ADDITIONAL LENGTH OPTIONS FOUND ON PAGE 55



SPRINT



UA VITAL



UA ECLIPSE



SCOUT



# AF TRAINING LS

XS-2XL, OVERSIZE 3XL, YSM-YXL

LOOSE FIT		
UJGLTW (W)	XS-2XL	\$63.00
UJGLTY (Y)	YSM-YXL	\$58.00

OVERSIZED SURCHARGE +\$5 PER SIZE  
ADDITIONAL LENGTH OPTIONS FOUND ON PAGE 55



SPRINT



UA VITAL



UA ECLIPSE



SCOUT



## AF TRAINING SHORTS

XS-2XL, OVERSIZE 3XL, YSM-YXL

### POCKETED SHORT

UJGS2PW (W)	XS-2XL	\$63.00
UJGS2PY (Y)	YSM-YXL	\$58.00

### NON-POCKETED SHORT

UJGS2W (W)	XS-2XL	\$58.00
UJGS2Y (Y)	YSM-YXL	\$53.00

### HEADBAND

UJLHBW1 (W)	OSFA	\$33.00
-------------	------	---------

5" INSEAM FOR POCKETED AND NON-POCKETED SHORT  
OVERSIZED SURCHARGE +\$5 PER SIZE  
ADDITIONAL LENGTH OPTIONS FOUND ON PAGE 55



**SPRINT**



**UA VITAL**



**UA ECLIPSE**



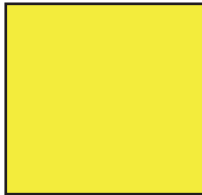
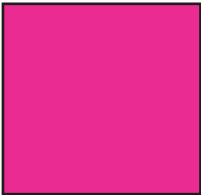
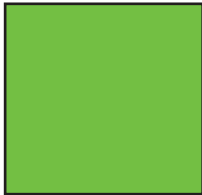

**SCOUT**



# ARMOUR FUSE

					
WHITE	BLACK	MIDNIGHT NAVY	UNIVERSITY RED	ROYAL	FOREST GREEN
					
TEAM KELLY GREEN	MAROON	CARDINAL	DARK ORANGE	STEELTOWN GOLD	TEAM VEGAS GOLD
					
PURPLE	SILVER GRAY	GRAPHITE	CAROLINA BLUE	CLEVELAND BROWN	TEXAS ORANGE
					
COASTAL TEAL	PINK	POISON	CAPRI	TAXI	BASEBALL GRAY
					
OCEAN STORM	TENNESSEE ORANGE	GRAYSTONE	MIAMI TEAL	SEA GLASS	POWDER KEG BLUE
					
ELECTRIC BLUE	GOLD RUSH	TROPIC PINK			

**FLUORESCENTS**  
NOT CURRENTLY AVAILABLE IN TONAL  
PRINTS OR ON GAMEDAY SELECT PRODUCT

			
YELLOW FLUORESCENT	PINK FLUORESCENT	GREEN FLUORESCENT	ORANGE FLUORESCENT

## HEATHER COLOR OFFERING

Offered exclusively on "Vital" and "Scout" Designs on ArmourFuse Training product (see pages 44-49)

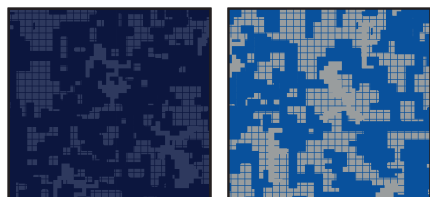
Swatches available through your ArmourFuse business Customer Service Rep



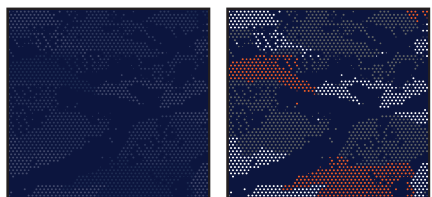


# ARMOUR FUSE

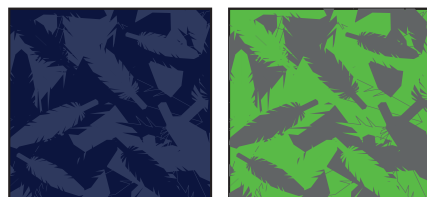
Prints available in all ArmourFuse colors. (Fluorescents not currently available in tonal prints)



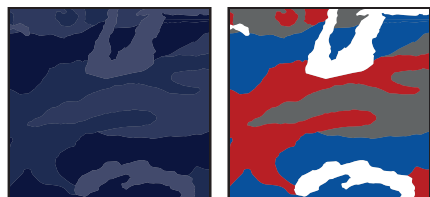
DIGITAL CAMO



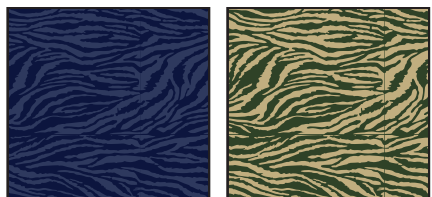
PIXEL CAMO



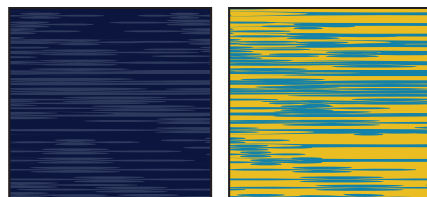
WINGS



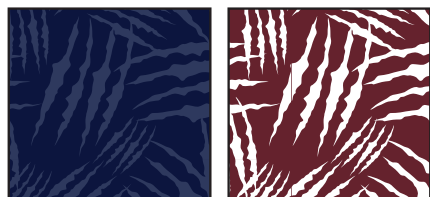
WOODLAND CAMO



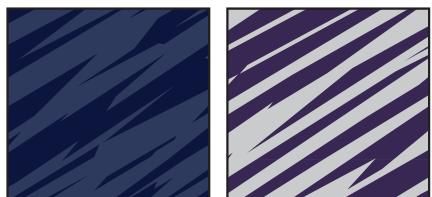
BENGAL



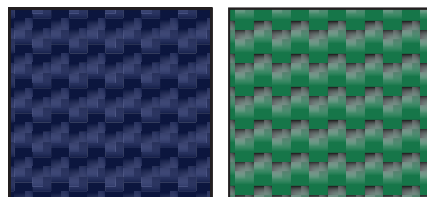
BLUR



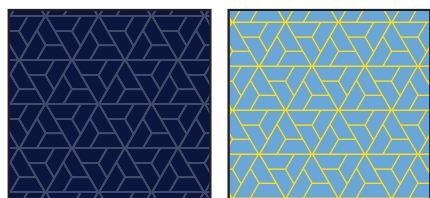
CLAW



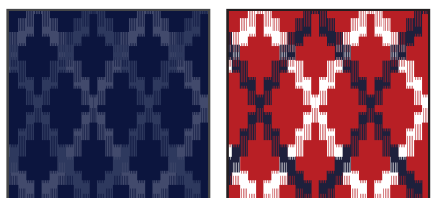
SPLINTER



CARBON WEAVE



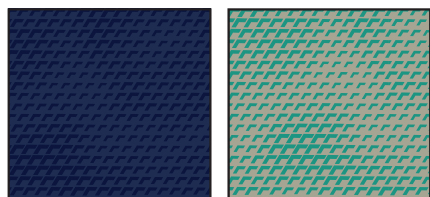
RAZOR



TOTEM

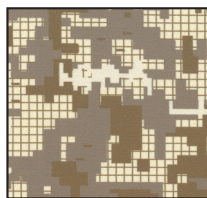


TREAD

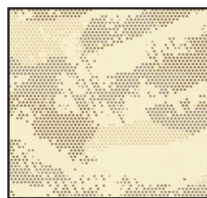


SCALE

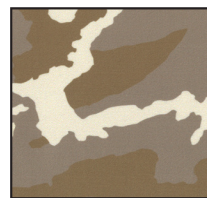
DESERT CAMO  
LOCKED COLOR COMBINATIONS,  
CANNOT BE ALTERED



DESERT  
DIGITAL CAMO



DESERT  
PIXEL CAMO



DESERT  
WOODLAND CAMO

## FONT OPTIONS

### BADGER

ABCDEFGHIJKLMNOPQRSTUVWXYZ  
0123456789

### COMBINE

ABCDEFGHIJKLMNOPQRSTUVWXYZ  
0123456789

### BEARCAT

ABCDEFGHIJKLMNOPQRSTUVWXYZ  
0123456789

### CADET

ABCDEFGHIJKLMNOPQRSTUVWXYZ  
0123456789

### HIGHLIGHT

ABCDEFGHIJKLMNOPQRSTUVWXYZ  
0123456789

### TERRAFONT

ABCDEFGHIJKLMNOPQRSTUVWXYZ  
0123456789

### PREMIER

ABCDEFGHIJKLMNOPQRSTUVWXYZ  
0123456789

### TIFFANY

ABCDEFGHIJKLMNOPQRSTUVWXYZ  
0123456789

### FULL BLOCK

ABCDEFGHIJKLMNOPQRSTUVWXYZ  
0123456789

### UNDENIABLE

ABCDEFGHIJKLMNOPQRSTUVWXYZ  
0123456789

### FALCON

ABCDEFGHIJKLMNOPQRSTUVWXYZ  
0123456789

### PLAIN BLOCK

ABCDEFGHIJKLMNOPQRSTUVWXYZ

### ATHLETIC SCRIPT

ABCDEFGHIJKLMNOPQRSTUVWXYZ  
abcdefghijklmnopqrstuvwxyz

### CLASSIC SCRIPT

ABCDEFGHIJKLMNOPQRSTUVWXYZ  
abcdefghijklmnopqrstuvwxyz

### NOTE:

- Gameday Select Package Pricing now includes all of the above listed fonts
- Dropped fonts available for fill-in orders only

## STOCK DECORATION OPTIONS

SCREEN PRINT	ONE COLOR	TWO COLORS
Team Name	\$5.00	\$10.00
Team Mascot/Logo	\$5.00	\$10.00
Front + Back Numbers	\$10.00	\$15.00

TWILL	ONE COLOR	TWO COLORS
Team Name	\$20.00	\$25.00
Front + Back Numbers	\$25.00	\$30.00
Player Names	\$20.00	
ArmourFuse Twill Patch (Max 3"x3")	\$10.00	\$10.00

EMBROIDERY	ONE COLOR	TWO COLORS
Team Name (up to 2")	\$10.00	\$10.00

see page 55 for Embroidered Mascot/Logo pricing

### ADDITIONAL STOCK OPTIONS & NOTES

- Player Numbers Per Location = 1/2 of above
- "Front + Back Numbers" pricing
- Player Name Directly On Jersey Only (No Nameplates)
- ArmourFuse Twill = Twill Pricing +\$10
- Add Tail to Script Font Twill Team Name +\$10
- Add Embroidery to Twill Tail +\$10
- Non-Stock designs and lettering may require additional charge at Under Armour's discretion (call for quote)

## LETTERING ARRANGEMENTS

STRAIGHT

ARCHED

BRIDGED

VERTICAL ARCH

*Athletic Script*

*Classic Script*

## GAMEDAY SELECT OPTIONS

3/16" 1-COLOR PIPE				
				
WHITE	BASEBALL GRAY	BLACK	MIDNIGHT NAVY	UNIVERSITY RED
				
ROYAL	FOREST GREEN	MAROON	PURPLE	DARK ORANGE
				
STEELTOWN GOLD	TEAM KELLY GREEN	CARDINAL	TEAM VEGAS GOLD	CAROLINA BLUE
				
CLEVELAND BROWN	TEAL	TEXAS ORANGE	SILVER GRAY	GRAPHITE

1/2" 3-COLOR BRAID		
1	2	3

ANY COMBO  
OF PIPE COLORS

### INCLUDED PIPE/BRAID

#### 1. Jersey Front

Around Neck

OR

Around Placket

OR

None

#### 2. Jersey Sleeves

Sleeve Ends

OR

None

#### 3. Pants

Down Side

OR

None

### OPTIONAL PANT ALTERATIONS

	LIST PRICE
Reduce Knicker Inseam 2" and Hem w/ Elastic	\$0.00
Increase Knicker Inseam 2" and Hem w/ Elastic	\$0.00
Increase Knicker Inseam 4" and Hem w/ Elastic*	\$15.00
Reduce Relaxed/Tapered Inseam 2" and Hem	\$0.00
Increase Relaxed/Tapered Inseam 2" and Hem	\$0.00
Increase Relaxed/Tapered Inseam 4" and Hem*	\$15.00

### OPTIONAL ARMOURFUSE® TWILL (L X H)

	LIST PRICE
Custom Team Name (Max. 14" x 4.25")	\$10.00
Custom Left Chest Team Logo (Max. 4" x 5")	\$10.00
Custom Sleeve Patch (Max. 4" x 4")	\$10.00
Custom Back Neck Patch (Max. 3" x 2")	\$10.00
Player Name (On Nameplate)	\$35.00
Player Name Directly on Jersey (No Nameplate)	\$25.00
Blank Nameplate	\$6.00
3-Color Twill Team Name	\$5.00
3-Color Twill Numbers (per location)	\$5.00
Add Tail to Script Font Team Name	\$10.00
Add Text to Script Font Tail	\$10.00

**Note:** Vector art must be provided for custom Armourfuse® Twill or additional artwork charges will apply

\*Available on Men's styles only






















## STOCK OPTIONS

3/16" 1-COLOR PIPE	LIST PRICE
Around Placket (UBJ316P)	\$15.00
Sleeve Ends (UBJ316S)	\$15.00
Down Side (UBP316D)	\$15.00

1/2" 3-COLOR BRAID	LIST PRICE
Around Placket (UBJ12AP)	\$15.00
Around Neck (UBJ12NB)	\$15.00
Sleeve Ends (UBJ12SE)	\$15.00
Down Sides (UBP12DS)	\$15.00

**NOTE:** Additional leadtime should be expected for orders including piping, braiding and/or hemming. Please contact a UA Sale Rep for updates.

### PIPE & BRAID AVAILABLE COLORS

Pipe 3/16"						
	WHITE	BLACK	MIDNIGHT NAVY	UNIVERSITY RED	ROYAL	FOREST GREEN
Braid 1/2"						
	MAROON	PURPLE	DARK ORANGE	CARDINAL	TEAM VEGAS GOLD	
						
	BK/WH/BK	NA/WH/NA	SC/WH/SC	RO/WH/RO		
						
	DG/WH/DG	MA/WH/MA	PU/WH/PY	OR/WH/OR		
						
	CA/WH/CA	VG/WH/VG				



## ADDITIONAL LENGTH OPTIONS (ARMOURFUSE ONLY - FREE OF CHARGE)

### BASEBALL/SOFTBALL

TYPE	ADJUSTMENT	CODE
JERSEYS	Add 2" body length	UIX2BDY
	Add 4" body length	UIX4BDY

### FOOTBALL

TYPE	ADJUSTMENT	CODE
JERSEYS	Shorten to waist length	
PANTS	Add 2" to inseam length	UIX2INS

### LACROSSE/ FIELD HOCKEY

TYPE	ADJUSTMENT	CODE
JERSEYS	Add 2" body length	UIX2BDY
SHORTS	Subtract 1" from inseam	UISHTN1
	Subtract 2" from inseam	UISHTN2
	Add 1" to inseam length	UIXIINS
	Add 2" to inseam length	UIX2INS
KILTS	Add 1" to inseam length	UIXIINS
	Add 2" to inseam length	UIX2INS

### BASKETBALL

TYPE	ADJUSTMENT	CODE
JERSEYS	Add 2" body length	UIX2BDY
	Add 4" body length	UIX4BDY
	Add 6" body length	UIX6BDY
SHORTS	Subtract 1" from inseam	UISHTN1
	Add 1" to inseam length	UIXIINS
	Add 2" to inseam length	UIX2INS
	Add 3" to inseam length	UIX3INS
SHOOTING SHIRTS	Add 2" body, 1" sleeve	UIX2B1S
	Add 4" body, 2" sleeve	UIX4B2S
	Add 6" body, 3" sleeve	UIX6B3S

### SOCCER

TYPE	ADJUSTMENT	CODE
JERSEYS	Add 2" body length	UIX2BDY
SHORTS	Subtract 1" from inseam	UISHTN1
	Subtract 2" from inseam	UISHTN2
	Add 1" to inseam length	UIXIINS
	Add 2" to inseam length	UIX2INS

### TRACK & FIELD

TYPE	ADJUSTMENT	CODE
JERSEYS	Add 2" body length	UIX2BDY
LOOSE SHORTS*	Subtract 1" from inseam	UISHTN1
	Add 1" to inseam length	UIXIINS

\*UITS2M & UITS2W ONLY

### TRAINING

TYPE	ADJUSTMENT	CODE
JERSEYS	Add 2" body length	UIX2BDY
	Add 4" body length	UIX4BDY
	Add 6" body length	UIX6BDY
SHORTS	Subtract 1" from inseam	UISHTN1
	Subtract 2" from inseam	UISHTN2
	Add 1" to inseam length	UIXIINS
	Add 2" to inseam length	UIX2INS
	Add 3" to inseam length	UIX3INS

### VOLLEYBALL

TYPE	ADJUSTMENT	CODE
JERSEYS	Add 2" body length	UIX2BDY
SHORTS	Subtract 1" from inseam	UISHTN1
	Subtract 2" from inseam	UISHTN2

## EMBROIDERY

### MASCOTS (STOCK ONLY) LIST PRICE

Mascot	\$11.00
Mascot with One Line	\$12.00
Mascot with Two Lines	\$13.00
American Flag	\$11.00
Small/Homeplate	\$6.00

### DIGITIZING (STOCK AND ARMOURFUSE ONLY) LIST PRICE

Stock Designs and Lettering	\$180.00
Custom Logos	Call for Quote

- Prices are based upon size of designs, not the number of colors. Prices are subject to change if design exceeds specifications.
- Dimensions are maximum space - unless specifically noted best judgement will be used.
- Letter styles are available horizontal or arched.
- No digitizing charge for team names.

- Flag size up to 2" by 3" (bigger area - call for quote)
- Minimum order charges apply for embroidery
- All designs require an additional digitizing charge, except:
  - 1) Digitized designs supplied on a disk
  - 2) Digitized design is a re-order of an existing design

## STANDARD SLEEVE PRINT STRIPES

\*OPTIONS - Code numbers listed below stripe patterns

\*Stripes may be adjusted to fit smaller garments and not measure exactly as shown.

01	02	03	04	05
06	07	08	09	

## ARMOURFUSE® GRAPHIC OPTIONS



## TEAM TRAINING



STYLE NAME	GENDER	STYLE#	UA ECLIPSE	UA VITAL	SCOUT
HOODY	MEN'S	UJGSLHM	X	X	X
	WOMEN'S	UJGSLHW	X	X	X
	YOUTH	UJGSLHY	X	X	X
1/4 ZIP	MEN'S	UJGQZPM	X	X	X
1/2 ZIP	WOMEN'S	UJGHZPW	X	X	X
LOOSE SHORTSLEEVE	MEN'S	UJGSIM	X	X	X
	WOMEN'S	UJGSIW	X	X	X
	YOUTH	UJGSIY	X	X	X
LOOSE LONGSLEEVE	MEN'S	UJGLIM	X	X	X
	WOMEN'S	UJGLIW	X	X	X
	YOUTH	UJGLIY	X	X	X
COMPRESSION SLEEVELESS	MEN'S	UJGCBL	X	X	X
COMPRESSION SHORTSLEEVE	MEN'S	UJGTBL	X	X	X
COMPRESSION 1/2 SLEEVE	MEN'S	UJGHBL	X	X	X
COMPRESSION LONGSLEEVE	MEN'S	UJGCLS	X	X	X
POCKETED SHORT	MEN'S	UJGS2PM	X	X	X
	WOMEN'S	UJGS2PW	X	X	X
	YOUTH	UJGS2PY	X	X	X
NON-POCKETED SHORT	MEN'S	UJGS2M	X	X	X
	WOMEN'S	UJGS2W	X	X	X
	YOUTH	UJGS2Y	X	X	X



**GAMEDAY SELECT TEAM UNIFORMS**  
ORDERING INFORMATION AND CUSTOMER SERVICE:  
1-800-474-6118  
www.uacustomuniforms.com



**ARMOURFUSE TEAM UNIFORMS**  
ORDERING INFORMATION AND CUSTOMER SERVICE:  
1-800-594-9082  
www.underarmourteamuniforms.com



**UA NEXT**  
ORDERING INFORMATION AND CUSTOMER SERVICE:  
1-800-594-9082  
www.underarmourteamuniforms.com



**STOCK TEAM UNIFORMS**  
ORDERING INFORMATION AND CUSTOMER SERVICE:  
1-800-594-9082  
www.underarmourteamuniforms.com

## ORDERING INFORMATION

### Guarantee:

The materials and workmanship of our garments are guaranteed when given fair treatment and used under normal conditions.

### Color Matching:

Scientifically, it is not possible to achieve a perfect color match from one dye lot to another. Therefore, we cannot guarantee a perfect match from order to order or from one fabric to another.

### Color Abbreviation Key:

The following abbreviations may be used when ordering merchandise.

<b>BG</b> Baseball Gray	<b>EB</b> Electric Blue	<b>PI</b> Pink	<b>SI</b> Silver Grey
<b>BK</b> Black	<b>GP</b> Graphite	<b>PK</b> Powderkeg Blue	<b>TA</b> Taxi
<b>BR</b> Brown	<b>KE</b> Team Kelly Green	<b>PO</b> Poison	<b>TE</b> Teal
<b>CA</b> Cardinal	<b>LG</b> Steeltown Gold	<b>PU</b> Purple	<b>TO</b> Texas Orange
<b>CB</b> Carolina Blue	<b>MA</b> Maroon	<b>RO</b> Royal	<b>TP</b> Tropic Pink
<b>CP</b> Capri	<b>NA</b> Midnight Navy	<b>RU</b> Gold Rush	<b>VG</b> Team Vegas Gold
<b>DG</b> Forest Green	<b>OR</b> Dark Orange	<b>SC</b> University Red	<b>WH</b> White

### Price Policy:

All catalog prices are list or suggested retail. Prices are subject to change without notice. Merchandise will be invoiced based on the prices in effect at the time the order is placed.

### Terms:

Prices are FOB shipping point. Payment is due Net 30.

### Minimum Order Charges:

A handling charge of \$10.00 will be added to orders of less than \$150.00 list. Custom and GamedaySelect fill-in minimum order is 6 units per style and color. A 100% surcharge will be applied to orders of 1-2 units, and a 50% surcharge for orders of 3-5 units.

### Lettered Orders for COD Shipment:

A 50% deposit is required on all lettered orders calling for COD shipment.

### Delivery:

Shipments will always be made by the fastest, least expensive means possible. The customer will assume any additional expense required to expedite delivery.

### Order Cancellations:

Cancellations must be received at least one day prior to the ship date. Special order garments cannot be cancelled after they have been cut. Lettered garments cannot be cancelled after they have been printed or sewn.

### Returns:

Claims must be reported to our office within 10 working days of merchandise receipt. Returns cannot be made after 30 days of the invoice date. All returns for plain merchandise must be clearly marked with an authorization number or label obtained from our office. All returns for lettered merchandise must be clearly marked "LETTERING." When requesting an authorization label, the following information is required: Reason for return, Invoice #, Style #, Color, Size/Quantity. An authorization label will then be sent to you to prepare the merchandise for return shipment. We reserve the right to repair, replace or issue credit for any merchandise returned. A 15% restocking fee and shipping charges will be charged for merchandise returned that is either not damaged or the damage is determined not to be our fault. All worn garments must be properly laundered prior to return or they will not be accepted.

All custom and custom-stock uniforms may not be returned under any circumstances if delivered properly.

### Shortages:

All claims must be made within 10 days of the invoice date.

### New Accounts:

All new accounts must be opened through your local sales representative. New accounts that do not have a Dunn and Bradstreet rating will be shipped COD until a credit line has been established.

### Samples:

Samples will be entered and billed as a regular order. Samples cannot be returned without prior approval from our office.

### Imprint Orders:

All imprint orders must be emailed, mailed or faxed in with detailed instructions on UA order forms. Imprint orders will not be taken by phone. Once garments have been lettered, the order cannot be cancelled or returned.

Under Armour will not be responsible for any items not checked for order accuracy or sizing before being sent to a printer / screener. We will not be responsible for shrinkage, defects, or damages caused during the imprinting of our garments by sources other than our own lettering department. Screenprinting sublimated uniforms can cause color migration. We do not recommend screenprinting on sublimated garments.

Photography is the property of Under Armour and is not to be used without written authorization.

## UNIFORM CARE INSTRUCTIONS

To enhance the appearance and extend the life of your uniforms, Under Armour recommends that you follow these cleaning and storing procedures:

### DO NOT DRY CLEAN

### DO NOT WASH IN HOT WATER

### DO NOT USE CHLORINE BLEACH

### DO NOT USE FABRIC SOFTENER

### DO NOT WASH WHITES AND COLORS TOGETHER

### DO NOT OVERLOAD THE WASHING MACHINE

### DO NOT MACHINE DRY ON HIGH HEAT

### DO NOT LEAVE WET OR DAMP GARMENTS IN YOUR TRAVEL BAG, IN A PILE WITH OTHER CLOTHING OR IN WASHING MACHINE

- Pre wash uniform prior to use.
- Uniforms should always be laundered immediately after wearing. However, if this is not possible, rinse garments and hang individually on rust-proof hangers. (Moisture may cause color migration of acid dyes so we advise separating wet or damp uniforms.)
- Belts and any other contrasting color items should be washed separately from the garment.
- It is always advisable to test wash a single uniform according to directions before washing an entire load.
- Wash and rinse all garments in warm water (approx. 110°) with mild detergent. Remove promptly after wash cycle.
- For optimum results, hang garments (especially those with elastane) to dry. If you cannot hang dry, machine dry on the lowest setting. Turn jerseys inside out before machine drying. Remove items from dryer immediately upon completion of the cycle. (Excessive heat can cause fabric shrinkage, discoloration, and cracking and peeling of vinyl plastisol lettering inks.)
- Make sure uniforms are completely dry before storing. Store in a dry area to prevent mildew. Protect them from sunlight and fluorescent light to prevent yellowing.

**PLEASE NOTE:** Under Armour will not be responsible for uniforms that are damaged due to improper care and maintenance. Failure to follow our specified care instructions will void all guarantees.

## UNIFORM FILL-IN LIFECYCLE

LAST SHOWN IN CATALOG	LAST FILL-IN SEASON	LAST FILL-IN SHIP
SP'16	SP'19	6/15/2019
FA'16	FA'19	12/15/2019
WI'16	WI'19	3/15/2020
SP'17	SP'20	6/15/2020
FA'17	FA'20	12/15/2020
WI'17	WI'20	3/15/2021
SP'18	SP'21	6/15/2021
FA'18	FA'21	12/15/2021
WI'18	WI'21	3/15/2022
SP'19	SP'22	6/15/2022
FA'19	FA'22	12/15/2022
WI'19	WI'22	3/15/2023
SP'20	SP'23	6/15/2023
FA'20	FA'23	12/15/2023
WI'20	WI'23	3/15/2024
SP'21	SP'24	6/15/2024
FA'21	FA'24	12/15/2024
WI'21	WI'24	3/15/2025



## COMPRESSION



Ultra-tight, second skin fit that keeps you locked in & makes you feel like you can do anything.

## FITTED



A slimmer, athletic cut that allows total mobility but eliminates the bulk of extra fabric.

## LOOSE



Fuller cut for complete comfort, total range of motion & greater breathability.

# MEN'S

	US SIZE	CHEST (IN)	WAIST (IN)	HIP (IN)
SM	26-28	34-37	29-31	34-36
MD	30-32	37-41	31-34	36-39
LG	34-36	41-44	34-37	39-42
XL	38-40	44-48	37-41	42-46
2XL	42-44	48-52	41-45.5	46-50
3XL	46-48	52-56	45.5-50	50-54
4XL	50-52	56-60	50-54.5	54-58
5XL	54-56	60-64	54.5-59	58-62

## HOW TO MEASURE



**CHEST:** Place the tape measure under your arms at the fullest part of your chest, wrap around your body until your fingers meet and mark the measurement

**WAIST:** Measure around your natural waistline – right above your hips. Be careful not to squeeze too tight to allow a little give.

**HIPS:** With your feet together, measure around the fullest part of your hips to ensure you'll have enough room to move comfortably.

# BOYS

## FITTED



A slimmer, athletic cut that allows total mobility but eliminates the bulk of extra fabric.

## LOOSE



Fuller cut for complete comfort, total range of motion & greater breathability.

	US SIZE	CHEST (IN)	WAIST (IN)	HIP (IN)
YXS	7	25-26	23-24	26-27
YSM	8	26-27	24-25	27-28
YMD	10-12	27-29	25-27	28-31
YLG	14-16	29-32.5	27-30	31-34
YXL	18-20	32.5-35.5	30-33	34-37

## HOW TO MEASURE



**CHEST:** Place the tape measure under your arms at the fullest part of your chest, wrap around your body until your fingers meet and mark the measurement

**WAIST:** Measure around your natural waistline – right above your hips. Be careful not to squeeze too tight to allow a little give.

**HIPS:** With your feet together, measure around the fullest part of your hips to ensure you'll have enough room to move comfortably.

# WOMEN'S

## COMPRESSION



Ultra-tight, second skin fit that keeps you locked in & makes you feel like you can do anything.

## FITTED



Sits close to the skin for a streamlined fit without the squeeze of compression.

## LOOSE



Fuller, more generous cut for enhanced range of motion & an effortlessly relaxed fit.

	US SIZE	CHEST (IN)	WAIST (IN)	HIP (IN)
XS	0-2	32.5-33.5	25.5-27	34.5-36
S	4-6	33.5-36	27-29	36-38
M	8-10	36-38	29-31	38-40
L	12-14	38-41	31-34	40-43
XL	16	41-44	34-37	43-46
XXL	18	44-46.5	37-39.5	46-48.5

## HOW TO MEASURE



**CHEST:** Place the tape measure under your arms at the fullest part of your chest, wrap around your body until your fingers meet and mark the measurement

**WAIST:** Measure around your natural waistline – right above your hips. Be careful not to squeeze too tight to allow a little give.

**HIPS:** With your feet together, measure around the fullest part of your hips to ensure you'll have enough room to move comfortably.

# GIRLS

## FITTED



Sits close to the skin for a streamlined fit without the squeeze of compression.

## LOOSE



Fuller, more generous cut for enhanced range of motion & an effortlessly relaxed fit.

	US SIZE	CHEST (IN)	WAIST (IN)	HIP (IN)
YXS	7	25-26.5	23-24	26-28
YSM	8	26.5-27.5	24-24.5	28-29
YMD	10-12	27.5-30.5	24.5-26.5	29-32.5
YLG	14-16	30.5-34	26.5-30.5	32.5-36.5
YXL	18-20	34-36	30.5-32.5	36.5-38.5

## HOW TO MEASURE



**CHEST:** Place the tape measure under your arms at the fullest part of your chest, wrap around your body until your fingers meet and mark the measurement

**WAIST:** Measure around your natural waistline – right above your hips. Be careful not to squeeze too tight to allow a little give.

**HIPS:** With your feet together, measure around the fullest part of your hips to ensure you'll have enough room to move comfortably.

## WEST

**PAT BAUER**  
SR. REGIONAL MANAGER  
410.299.3798  
pbauer@underarmour.com  
WA // OR // MT // ID // AK

**JEFF UTTZ**  
626.484.3496  
jeffu@underarmour.com  
Southern & Central CA //  
Southern NV // HI

**MARC GUSTAFSON**  
303.828.7468  
mgustafson@underarmour.com  
UT // CO // WY //  
Western KS // Western NE

**MATT VALENTINE**  
415.307.1290  
mvalentine@underarmour.com  
Northern CA // NV

**DAN LAABES**  
602.882.7241  
dlaabes@underarmour.com  
AZ // NM // West TX

**GREG ROMINE**  
719.238.9244  
gromine@underarmour.com  
North TX (Dallas) // OK // Western AR

**MICHAEL SMITH**  
713.471.5378  
michael.smith@underarmour.com  
South TX

## CENTRAL

**BROCK PAALHAR**  
SR. REGIONAL MANAGER  
573.808.1010  
bpaalhar@underarmour.com  
IA // MN // ND // SD

**TONY DONOFRIO**  
419.356.9742  
tonydonofrio@underarmour.com  
Northern IN // Northern OH //  
MI // Western PA

**FRANK WEBER**  
618.540.3955  
fweber@underarmour.com  
MO // Central & Eastern NE //  
Southern IL // Eastern KS

**JOHN WACHTEL**  
513.314.4024  
jwachtel@underarmour.com  
Southern IN // Southern OH // KY  
Eastern TN // WV

**MARC CALABRETTA**  
443.655.6768  
mcalabretta@underarmour.com  
Northern IL // IA // WI

**MONTE GIBBS**  
662.801.3039  
mgibbs@underarmour.com  
Central & Western TN // Panhandle FL //  
LA // AL // MS // Eastern AR

## EAST

**DAN WILLIAMS**  
352.672.1676  
dwilliams@underarmour.com  
FL (except Panhandle)

**ALEX BRUEGGEMANN**  
410.652.4337  
abrueggemann@underarmour.com  
GA // SC // NC

**GARY POWERS**  
410.746.3790  
gpowers@underarmour.com  
MD // VA // Washington DC

**FRANK NUNAN**  
484.576.9777  
fnunan@underarmour.com  
DE // NJ // Philadelphia area

**BOB BARTLETT**  
315.380.6505  
bobb@underarmour.com  
NY // Lax Specialty

**JAY KELLEHER**  
443.615.0462  
jkelleher@underarmour.com  
New England

## COLLEGIATE

**TOMMY AMICO**  
951.808.0367  
tamico@underarmour.com  
WEST

**TODD LOCKLEAR**  
410.454.6572  
tlocklear@underarmour.com  
EAST

## LICENSEES

**FOUNDER SPORT GROUP**  
Stock & Armourfuse Uniforms  
www.underarmourteamuniforms.com  
800.594.9082  
UAStatus@foundersportgroup.com

**POWERS ATHLETIC**  
Custom Uniforms  
www.uacustomuniforms.com  
800.474.6118  
customerservice@powersathletic.com

**THE GAME**  
Custom Headwear  
www.uateamheadwear.com  
800.723.5656  
Allison.Abbott@thegame.com

**USB**  
McDavid & Shock Doctor  
Water Bottles  
657.383.4438  
UA@unitedspb.com

**SAFILO**  
Eyewear  
uateamsportsorders@safilo.com



TEL: 1.888.828.1547 / B2B: ARMOURHOUSE.UNDERARMOUR.COM

### COLLEGIATE

TEAMSPO RTS COLLEGIATE / TEAMSPO RTS.COLLEGIATE@UNDERARMOUR.COM

### CENTRAL

TEAM SPORTS MW / TEAMSPORTSMW@UNDERARMOUR.COM

### EAST

TEAM SPORTS SE / TEAMSPORTSSE@UNDERARMOUR.COM  
TEAM SPORTS NE / TEAMSPORTSNE@UNDERARMOUR.COM

### WEST

TEAM SPORTS WC / TEAMSPORTSWC@UNDERARMOUR.COM  
TEAM SPORTS SW / TEAMSPORTSSW@UNDERARMOUR.COM



## CONTACT CENTER

Corporate Headquarters  
1020 Hull Street  
Baltimore, MD 21230

Under Armour® Apparel Returns  
1010 Swan Creek Drive  
Baltimore, MD 21226

UA Footwear/Accessories Returns  
2510 W. Walnut Avenue  
Rialto, CA 92376

### ALL TEAM SPORTS ORDERS AND QUESTIONS PLEASE USE THE FOLLOWING:

1.888.828.1547

### CORPORATE OFFICE HOURS OF OPERATION

Monday through Friday, 8:30am – 7:00pm, EST.

### UNDER ARMOUR® B2B – ONLINE ORDERING

[armourhouse.underarmour.com](http://armourhouse.underarmour.com)

- 24/7 access to check inventory and place orders
- Ability to track orders and shipments
- Priority product allocation
- Faster processing time

### UNDER ARMOUR® B2B – SUPPORT

[B2B\\_support@underarmour.com](mailto:B2B_support@underarmour.com)

### UNDER ARMOUR® RETURN POLICY

Under Armour® stands behind its gear and EXPECTS nothing less than perfection. If you have received a defective product, an incorrect size, or an incorrect order, please contact us immediately for a return authorization number so that we can quickly process your return and ensure your satisfaction.

ALL RETURNS MUST BE COMPLETED WITHIN 30 DAYS OF RECEIPT AND MUST BE IN REASONABLE CONDITION. ALL RETURNS MUST HAVE THE RA# CLEARLY MARKED ON THE CARTON. ALL RETURNS ARE SUBJECT TO A 15% RE-STOCKING FEE.

Should you need to return or exchange an item, you MUST include your RA#, a copy of your invoice, and an explanation in writing as to why you are returning the item. Send your return to the marked address on your pack list. If you are exchanging merchandise, you are responsible for the cost of returning the product. Original shipping costs are non-refundable. All returned merchandise must be received in new, resalable condition.

### UNDER ARMOUR® CANCELLATION POLICY

Any request for cancellation of an order for UA products must be made, in writing, through the customer's UA Sales Representative. A request to cancel an order must be made more than 30 days before the customer's original desired ship date. All cancellations are subject to UA approval.

### ALL PRICES SET FORTH HEREIN ARE SUBJECT TO CHANGE WITHOUT NOTICE.

© 2021 Under Armour®. All rights reserved. All trademarks, images, photographs, logos, and graphics are owned or controlled by Under Armour®.

Confidential and business proprietary information for internal Under Armour®, Inc. use only. Reproduction is strictly prohibited.

**UNDER ARMOUR® PERFORMANCE**  
SPRING/SUMMER 2022