



# VOLLEYBALL

FALL 2026



UNDER ARMOUR.

# PROTECT THIS HOUSE.®



## VISION

TO INSPIRE YOU WITH PERFORMANCE  
SOLUTIONS YOU NEVER KNEW  
YOU NEEDED BUT CAN'T IMAGINE  
LIVING WITHOUT.

## MISSION

UNDER ARMOUR  
MAKES YOU BETTER.

## VOLLEYBALL —

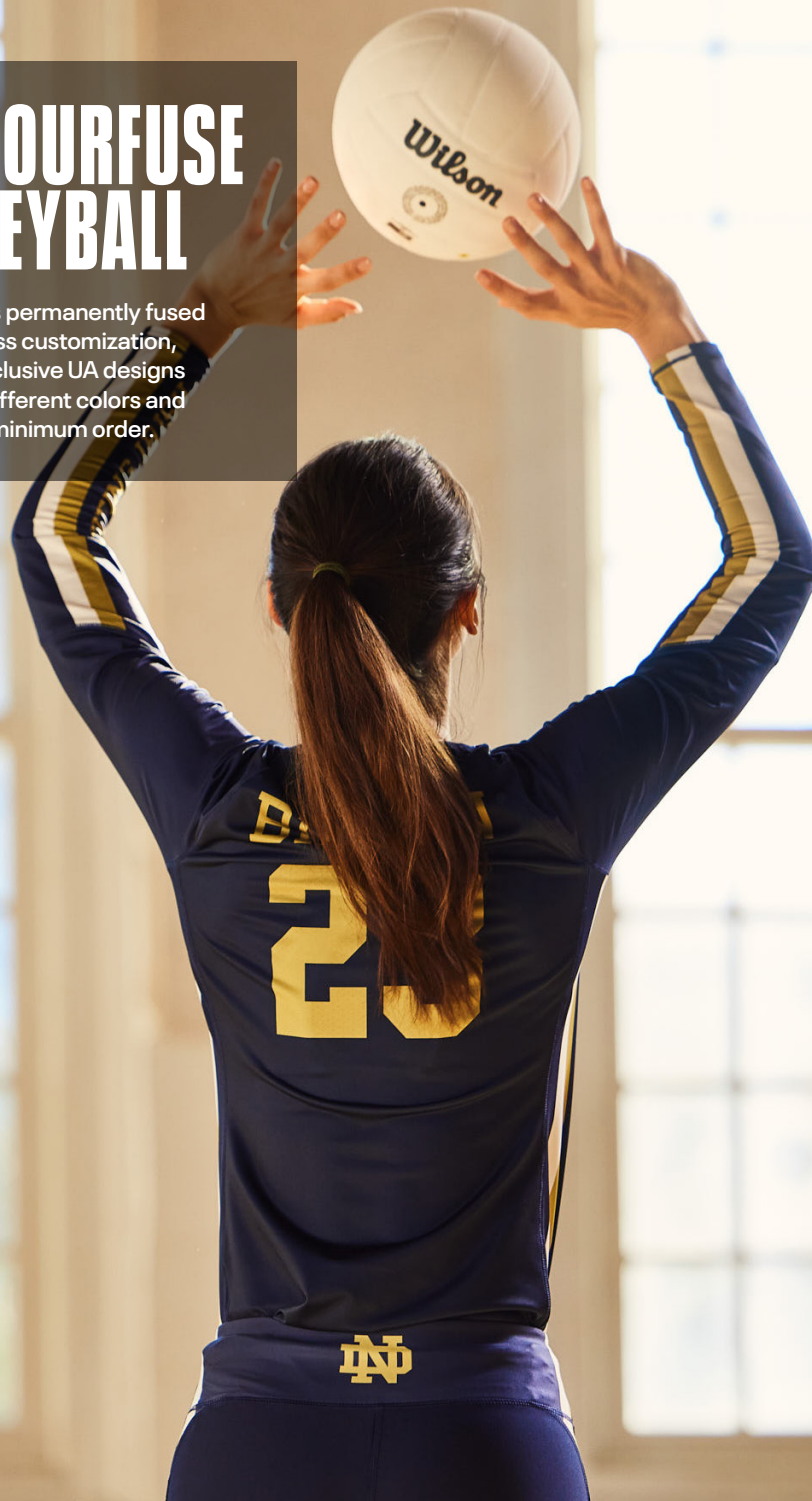
- 001 W'S VOLLEYBALL UNIFORMS
- 008 W'S VOLLEYBALL APPAREL
- 010 W'S VOLLEYBALL FOOTWEAR
- 011 VOLLEYBALL SOCKS
- 012 W'S VOLLEYBALL PROTECTIVE
- 013 M'S VOLLEYBALL UNIFORMS
- 015 MEN'S AF TRAINING
- 025 WOMEN'S AF TRAINING
- 030 UNIFORM ORDERING INFO





# ARMOURFUSE VOLLEYBALL

Brilliant, vibrant team colors permanently fused directly into textiles. Limitless customization, all-inclusive pricing with exclusive UA designs and customized prints. 41 different colors and 18 prints available. 6 piece minimum order.



## ARMOURFUSE SHOWTIME LONG SLEEVE JERSEY

**ADULT:** XS-2XL, OVERSIZE 3XL

STYLE	SIZE	PRICE
UJVIS2W (W)	XS-2XL	\$109.50

Lightweight, 4-way stretch performance fabric through the body. Mesh fabric through the back and shoulder panels for increased breathability. Fitted silhouette that doesn't sacrifice range of motion through the arms and chest. Two-ply construction to provide durability through the arms.



**PARIS**

NEW DESIGN FIRST SHIP: 6/1/2026



**DIG**



**ELITE**



**ACE**



**SET**



**BLOCK**

OVERSIZED SURCHARGE +\$5 PER SIZE | ALL BASE JERSEY DESIGN IS APPROVED FOR HS/COLLEGIATE PLAY

## ARMOURFUSE SHOWTIME SHORT SLEEVE JERSEY

**ADULT:** XS-2XL, OVERSIZE 3XL

STYLE	SIZE	PRICE
UJVJSTW (W)	XS-2XL	\$104.50

Lightweight, 4-way stretch performance fabric through the body. Mesh fabric through the back and shoulder panels for increased breathability. Fitted silhouette that doesn't sacrifice range of motion through the arms and chest. Modern high low hem construction.



**PARIS**

NEW DESIGN FIRST SHIP: 6/1/2026



**DIG**



**ELITE**



**ACE**



**SET**



**BLOCK**

OVERSIZED SURCHARGE +\$5 PER SIZE | ALL BASE JERSEY DESIGN IS APPROVED FOR HS/COLLEGIATE PLAY



ARMOURFUSE VOLLEYBALL

## ARMOURFUSE SHOWTIME SLEEVELESS JERSEY

ADULT: XS-2XL, OVERSIZE 3XL

YOUTH: YSM-YXL

STYLE	SIZE	PRICE
UJVJSLW (W)	XS-2XL	\$92.00
UJVJSLG (G)	YSM-YLG	\$83.00

Signature HeatGear® fabrication with 4-way stretch. Mesh back panel for added breathability. Double side seam panel for more tapered body fit. Adult tall (+2") option available - applies to body and sleeve length. Bomber inspired V-Neck collar.



PARIS

NEW DESIGN FIRST SHIP: 6/1/2026



DIG



ELITE



ACE



SET



BLOCK

OVERSIZED SURCHARGE +\$5 PER SIZE | ALL BASE JERSEY DESIGN IS APPROVED FOR HS/COLLEGIATE PLAY

ARMOURFUSE VOLLEYBALL

## ARMOURFUSE SLEEVE

**ADULT:** XXS-2XL, OVERSIZE 3XL,4XL  
**SINGLE PAIR**

STYLE	SIZE	PRICE
UJVXSIW (W)	XXS-2XL	\$41.00

2-Ply performance stretch fabric.  
Compression fit.



## ARMOURFUSE LINE SHOT SHORT 3.0

**ADULT:** XS-2XL, OVERSIZE 3XL  
**YOUTH:** YSM-YLG

4" SHORT	SIZE	PRICE
UJVS83W (W)	XS-2XL	\$69.00
UJVS83G (G)	YSM-YLG	\$64.00
3" SHORT	SIZE	PRICE
UJVS86W (W)	XS-2XL	\$69.00

Lightweight, 4-Way stretch fabrication improves range of motion and dries faster. Smooth flatlock seams prevent chafing. 4" and 3" inseam available, Girls only available in 4". Sublimated Back Wasteband, Options to add team name, team logo.



BLK GPH MDN RED RYL

OVERSIZED SURCHARGE +\$5 PER SIZE | ALL BASE JERSEY DESIGN IS APPROVED FOR HS/COLLEGIATE PLAY

AF ARMOURFUSE® UNIFORMS | ORDERING INFORMATION AND CUSTOMER SERVICE: 1-888-871-0990 | [www.underarmourteamuniforms.com](http://www.underarmourteamuniforms.com) | FILL-IN LIFECYCLE TIMING FOUND ON PAGE 36. DECORATION OPTIONS AND ORDERING INFORMATION ARE AVAILABLE ON PAGES 30-36.

**ARMOURFUSE VOLLEYBALL**



**ARMOURFUSE GAMETIME  
LONG SLEEVE V-NECK**

**ADULT:** XS-2XL

**YOUTH:** YSM-YLG

**SHIP:** 6/1/2026

STYLE	SIZE	PRICE
UJVIG6W (W)	XS-2XL	\$85.00
UJVIG6G (G)	YSM-YLG	\$75.00

Lightweight blur mesh. Increased ventilation with increased mesh usage. 2-Ply bottom sleeve.



**TITANS**



**OLYMPIANS**



**TOPSPIN**



**ARCH**



**ARMOURFUSE GAMETIME  
CAP SLEEVE V-NECK**

**ADULT:** XS-2XL

**YOUTH:** YSM-YLG

**SHIP:** 6/1/2026

STYLE	SIZE	PRICE
UJVIG5W (W)	XS-2XL	\$80.00
UJVIG5G (G)	YSM-YLG	\$70.00

Lightweight blur mesh. Increased ventilation with increased mesh usage.



**TITANS**



**OLYMPIANS**



**TOPSPIN**



**ARCH**

OVERSIZED SURCHARGE +\$5 PER SIZE | ALL BASE JERSEY DESIGN IS APPROVED FOR HS/COLLEGIATE PLAY



## ARMOURFUSE BEACH VOLLEYBALL JERSEY

**ADULT:** XS-2XL, OVERSIZE 3XL

STYLE	SIZE	PRICE
UJV/BTW (W)	XS-2XL	\$77.50

Signature 4-Way stretch Heatgear fabrication.  
Mesh underarm inserts for breathability.  
Armhole construction to increase shoulder mobility.



**SAND DIG**



**BOUNCE**



OVERSIZED SURCHARGE +\$5 PER SIZE | ALL BASE JERSEY DESIGN IS APPROVED FOR HS/COLLEGIATE PLAY

## 1370635 WOMEN'S UA VB POWERHOUSE LS JERSEY 2.0

**\$50.00 | FITTED | **

**SIZES:** XS-2XL

**FABRIC:** 79% POLYESTER, 21% ELASTANE

**SHIP:** C/O

Smooth, lightweight, fast-drying fabric for superior performance. Upper sleeve & side mesh panels for added breathability. 7 oz. lower sleeve for extra durability. 4-way stretch construction & exaggerated armholes for better range of motion. Bomber inspired V-Neck color. White mesh color blocking on V-neck collar & side body inserts.

**GIRLS: 1370638 | \$40.00 | YSM-YXL**

**G = GIRLS OFFERING**

SOLID COLORWAYS: 001, 100 & 012  
THE BASE UNIFORM DESIGN IS APPROVED FOR HS PLAY



## 1377342 WOMEN'S UA VB POWERHOUSE SS JERSEY 2.0

**\$45.00 | FITTED | **

**SIZES:** XS-2XL

**FABRIC:** 79% POLYESTER, 21% ELASTANE

**SHIP:** C/O

Smooth, lightweight, fast-drying fabric for superior performance. Upper sleeve & side mesh panels for added breathability. 4-way stretch construction & exaggerated armholes for better range of motion. Bomber inspired V-Neck color. White mesh color blocking on V-neck collar & side body inserts.

**GIRLS: 1377343 | \$35.00 | YSM-YXL**

**G = GIRLS OFFERING**

SOLID COLORWAYS: 001 & 100  
THE BASE UNIFORM DESIGN IS APPROVED FOR HS PLAY





## 1389623 WOMEN'S UA TEAM SHORTY 4"

**\$33.00 | COMPRESSION | heatgear®**

**SIZES:** XS-2XL

**FABRIC:** 87% POLYESTER, 13% ELASTANE

**SHIP:** C/O

Super-light HeatGear® fabric delivers superior coverage without weighing you down. Material wicks sweat & dries really fast. 4-way stretch construction moves better in every direction. Anti-odor technology prevents the growth of odor-causing microbes. Removed front seam for maximum comfort. Updated waistband elastic with softer hand-feel. Inseam: 4". Heatseal Logo.



**YOUTH: 6001943 | \$25.00 | YSM-YLG**

Y = YOUTH OFFERING

## 1389624 WOMEN'S UA TEAM SHORTY 3"

**\$33.00 | COMPRESSION | heatgear®**

**SIZES:** XS-2XL

**FABRIC:** 87% POLYESTER, 13% ELASTANE

**SHIP:** C/O

Super-light HeatGear® fabric delivers superior coverage without weighing you down. Material wicks sweat & dries really fast. 4-way stretch construction moves better in every direction. Anti-odor technology prevents the growth of odor-causing microbes. Removed front seam for maximum comfort. Updated waistband elastic with softer hand-feel. Inseam: 3". Heatseal Logo.







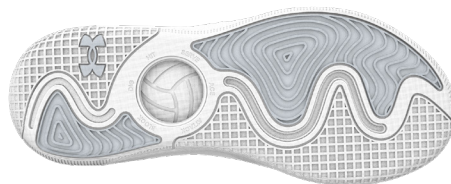
## 6006272 UA HIGHLIGHT ACE 2

**\$140.00**

**SIZES:** 5-14

**SHIP:** 6/1/2026 | LAST SHIP: 11/30/2026

Breathable, engineered woven jacquard upper is lightweight, comfortable & supportive where you need it. Rubber toe for added durability & protection. High-top ankle collar provides structured support for a lockdown fit & feel. Separate tongue construction for easy entry. Molded EVA sockliner for step-in comfort. Midsole designed for midfoot lockdown support & increased UA HOVR™ cushioning for comfort all game long. New outsole with volleyball-specific design provides lightweight traction for dynamic on-court movements.



100  
WHT/WHT/HALO

103  
WHT/WHT/BLK

101  
WHT/REFRESH MINT/  
BLUE BLUR

280  
STN/STN/PRIME PINK



## 6006273 UA ACE LOW 2

**\$125.00**

**SIZES:** 5-14

**SHIP:** 6/1/2026 | LAST SHIP: 11/30/2026

Breathable, engineered woven jacquard upper is lightweight, comfortable & supportive where you need it. Rubber toe for added durability & protection. Molded EVA sockliner for step-in comfort. Midsole designed for midfoot lockdown support & increased UA HOVR™ cushioning for comfort all game long. New outsole with volleyball-specific design provides lightweight traction for dynamic on-court movements.



101  
WHT/WHT/HALO

102  
WHT/BLK/BLK

100  
WHT/REFRESH MINT/  
BLUE BLUR

279  
STN/STN/PRIME PINK

## 1386251 UA TEAM CREW UNISEX

**\$14.00 | SINGLE PAIR**

**SIZES:** SM (YOUTH 13.5K-4.5 / WOMEN'S 4-6)  
MD (YOUTH 4.5-7 / MEN'S 7-8.5 / WOMEN'S 6-10)  
LG (MEN'S 8.5-13 / WOMEN'S 10-14)  
XL (MEN'S 13-16)

**FABRIC:** 95% POLYESTER, 5% ELASTANE

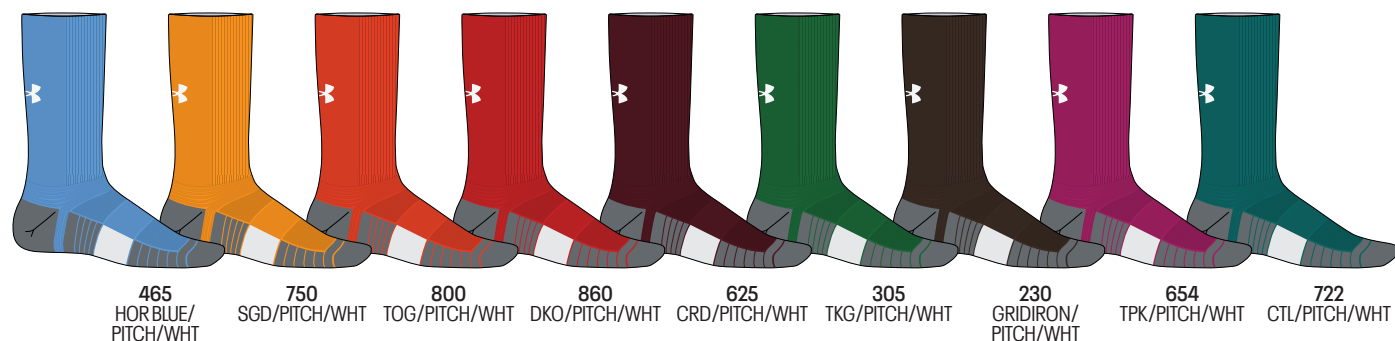
**SHIP:** C/O

Medium cushioning throughout foot for comfort & protection. Mesh panels on top of foot for added breathability. Durable material wicks sweat & dries really fast. Anti-odor technology helps prevent odor in the sock. Embedded arch support helps reduce foot fatigue. Fitted heel contours around your foot for a better fit. Left/Right specific fit.

**YOUTH: 1386252 | \$12.00**

**SIZES:** XS (10.5K-13K), SM (YOUTH 13.5K-4.5), MD (YOUTH 4.5-7)

**Y = YOUTH OFFERING**



## 1386311 CREW 3-PACK UNISEX

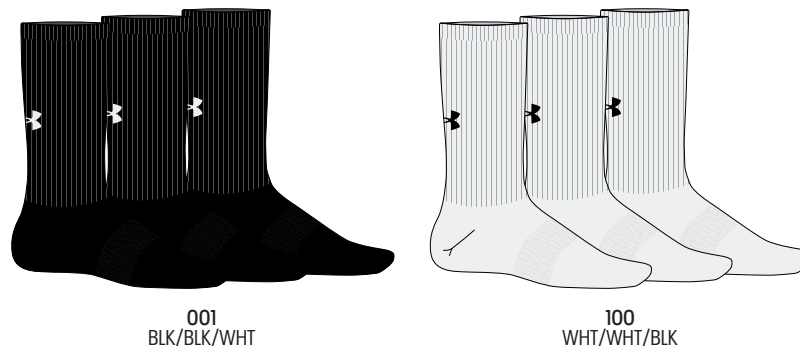
**\$16.00 | THREE PAIR**

**SIZES:** MD (YOUTH 4.5-7 / MEN'S 7-8.5 / WOMEN'S 6-10)  
LG (MEN'S 8.5-13 / WOMEN'S 10-14)  
XL (MEN'S 13-16)

**FABRIC:** 64% COTTON, 31% POLYESTER, 5% ELASTANE

**SHIP:** C/O

Lightweight, soft cotton-blend fabric for all-day comfort. Material wicks sweat & dries really fast. Locked-in fit design keeps sock securely on heel for an adjustment free fit that won't fall down. Medium cushioning placed strategically throughout foot protects high-impact areas without added bulk. Mesh panels on top of foot for added breathability. Built-in arch support helps reduce foot fatigue.





## UA23200 UA STRIVE 4 VOLLEYBALL KNEE PAD

**\$40.00 | SOLD IN PAIRS**

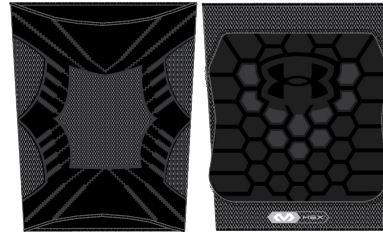
**SIZES:** SM, MD, LG

**FABRIC:** KNIT TUBE: 31%POLYESTER, 52%NYLON,  
13%RUBBER, 4%ELASTODIENE  
PAD: POLYETHYLENE FOAM

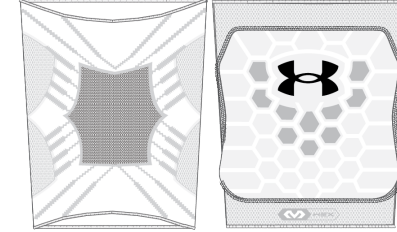
**SHIP:** 4/6/2026

Featuring patented McDavid® HEX® technology, the leading protective padding in the game. HEX is lightweight and anatomically contoured, moving freely with your body to provide exceptional protection. The preferred choice for elite athletes around the world. Dual Density foam construction for protection. Low-profile design for enhanced comfort and mobility. High abrasion pad cover for better durability and sliding. Countour circular knit sleeve for added comfort, fit, and feel with less bunching.

**POWERED BY:**  **McDAVID**



00001  
BLACK



90002  
WHITE

## UA21500 ARMOUR® 3 VOLLEYBALL KNEE PAD

**\$30.00 | SOLD IN PAIRS**

**SIZES:** SM, MD, LG

**FABRIC:** 61% POLYESTER, 25% NYLON, 14% ELASTODIENE,  
PE FOAM, EVA FOAM

**SHIP:** C/O

Circular knit construction for unmatched comfort, fit, and feel. Dual density EVA foam for impact protection without the bulk. Hinged design allows maximum mobility.

**GIRLS: UA21520 | \$28.00 | OSFA**



00001  
BLACK



90002  
WHITE





# ARMOURFUSE VOLLEYBALL

Brilliant, vibrant team colors permanently fused directly into textiles. Limitless customization, all-inclusive pricing with exclusive UA designs and customized prints. 41 different colors and 18 prints available. 6 piece minimum order.





## ARMOURFUSE VOLLEYBALL

ARMOURFUSE VOLLEYBALL  
SHORT SLEEVE JERSEY

ADULT: XS-2XL, OVERSIZE 3XL

STYLE	SIZE	PRICE
UJVJ3XM (M)	XS-2XL	\$90.50

Signature 4-way stretch HeatGear front, ventilated pin-dot mesh back for optimal performance. +2" body length available.

ARMOURFUSE VOLLEYBALL  
TANK 2.0

ADULT: XS-2XL, OVERSIZE 3XL

STYLE	SIZE	PRICE
UJVJ2XM (M)	XS-2XL	\$80.00

Signature 4-way stretch HeatGear front, ventilated pin-dot mesh back for optimal performance. +2" body length available.

ARMOURFUSE VOLLEYBALL  
SHORT 2.0

ADULT: XS-2XL, OVERSIZE 3XL

STYLE	SIZE	PRICE
UVSSM (M)	XS-2XL	\$80.00

Signature 4-way stretch HeatGear knit. -1" & -2" inseam length available. 7 1/2" inseam.



OVERSIZED SURCHARGE +\$5 PER SIZE | EXTENDED/SHORTENED LENGTHS OFFERED, SEE PAGE 34 FOR MORE INFO | BASE UNIFORM APPROVED FOR HS PLAY | ALL VOLLEYBALL DESIGNS AVAILABLE IN SHORTSLEEVE & TANK



ARMOURFUSE® UNIFORMS | ORDERING INFORMATION AND CUSTOMER SERVICE: 1-888-871-0990 | [www.underarmourteamuniforms.com](http://www.underarmourteamuniforms.com) | FILL-IN LIFECYCLE TIMING FOUND ON PAGE 36. DECORATION OPTIONS AND ORDERING INFORMATION ARE AVAILABLE ON PAGES 30-36.





# ARMOURFUSE TRAINING

Brilliant, vibrant team colors permanently fused directly into textiles. Limitless customization, all-inclusive pricing with exclusive UA designs and customized prints. 41 different colors and 18 prints available. 6 piece minimum order.







## ARMOURFUSE TRAINING

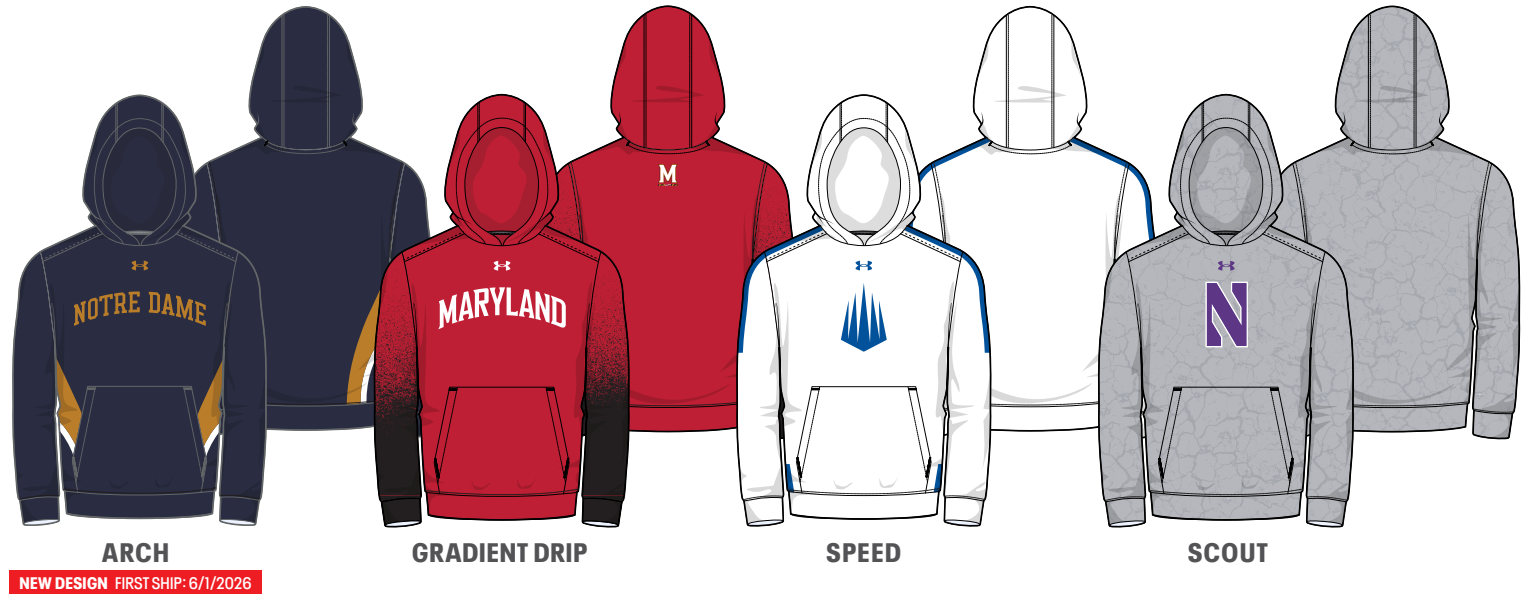
## ARMOURFUSE TRAINING HOODY

ADULT: XS-2XL, OVERSIZE 3XL-4XL

YOUTH: YSM-YXL

STYLE	SIZE	PRICE
UJGJFHM (M)	XS-2XL	\$128.00
UJGJFHY (Y)	YSM-YXL	\$117.50

8.26 oz. Fleece with stretch lined  
3-panel hood.



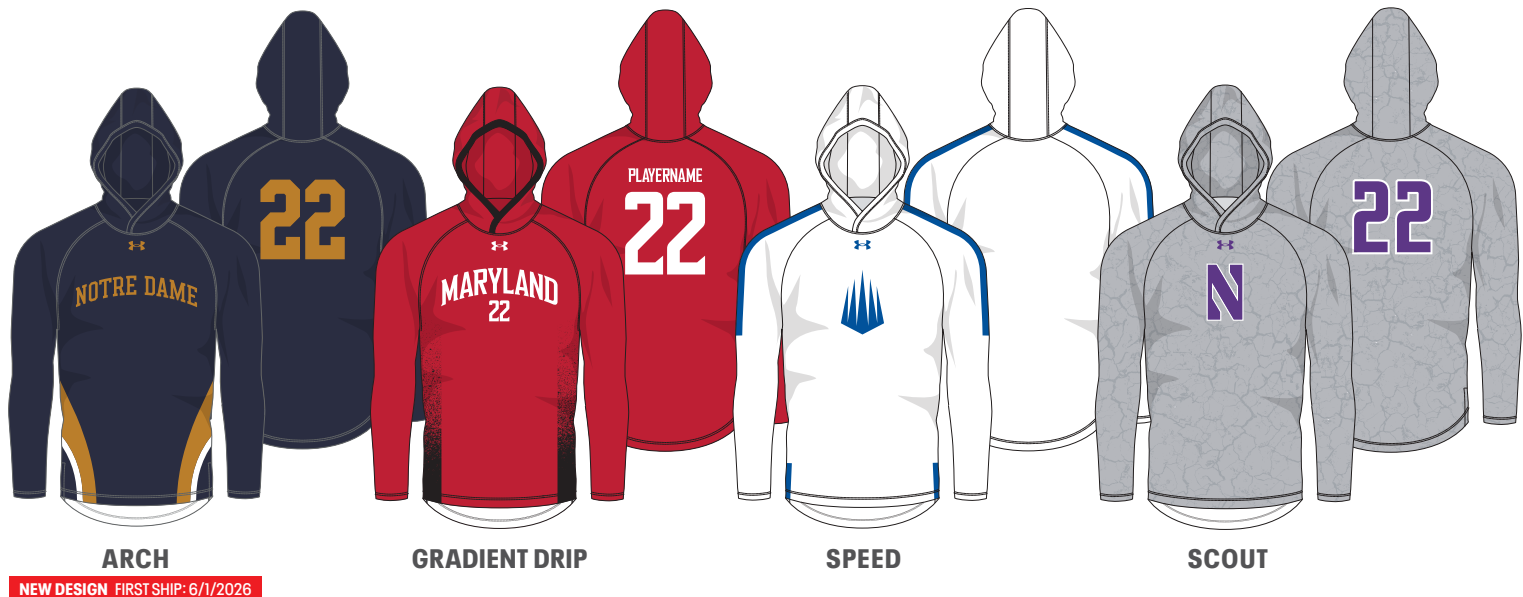
## ARMOURFUSE LONG SLEEVE HOODED SHOOTER

ADULT: XS-2XL, OVERSIZE 3XL-4XL

YOUTH: YSM-YXL

STYLE	SIZE	PRICE
UJGTHDM (M)	SM-2XL	\$122.50
UJGTHDY (Y)	YSM-YXL	\$117.50

New lightweight 4.8 oz. fabric with  
increased stretch for ultimate comfort.



OVERSIZED SURCHARGE +\$5 PER SIZE | ADDITIONAL LENGTH OPTIONS FOUND ON PAGE 34





## ARMOURFUSE TRAINING

ARMOURFUSE SHORT SLEEVE  
HOODED SHOOTER

ADULT: XS-2XL, OVERSIZE 3XL-4XL

YOUTH: YSM-YXL

STYLE	SIZE	PRICE
UJGTSSM (M)	XS-2XL	\$117.50
UJGTSSY (Y)	YSM-YXL	\$112.50

New lightweight 4.8 oz. fabric with increased stretch for ultimate comfort.



ARCH

GRADIENT DRIP

SPEED

SCOUT

NEW DESIGN FIRST SHIP: 6/1/2026

ARMOURFUSE SLEEVELESS  
HOODED SHOOTER

ADULT: XS-2XL, OVERSIZE 3XL-4XL

STYLE	SIZE	PRICE
UJGTHVM (M)	XS-2XL	\$97.00

New lightweight 4.8 oz. fabric with increased stretch for ultimate comfort.



ARCH

GRADIENT DRIP

SPEED

SCOUT

NEW DESIGN FIRST SHIP: 6/1/2026

OVERSIZED SURCHARGE +\$5 PER SIZE | ADDITIONAL LENGTH OPTIONS FOUND ON PAGE 34

**ARMOURFUSE TRAIN POLO****ADULT:** XS-2XL, OVERSIZE 3XL-4XL**SHIP:** 6/1/2026

STYLE	SIZE	PRICE
UJGTPIM (M)	XS-2XL	\$110.00

86% Polyester, 14% Elastane - Lightweight, smooth fabric, that wicks and dry's quickly. 2 Button CF Placket. Hem vent.

**ARCH****GRADIENT DRIP****SPEED****SCOUT****NEW DESIGN** FIRST SHIP: 6/1/2026

OVERSIZED SURCHARGE +\$5 PER SIZE | ADDITIONAL LENGTH OPTIONS FOUND ON PAGE 34



## ARMOURFUSE TRAINING

**ARMOURFUSE  
SHORT SLEEVE ¼ ZIP****ADULT:** XS-2XL, OVERSIZE 3XL-4XL

STYLE	SIZE	PRICE
WGQZVM (M)	XS-2XL	\$123.50

New lightweight 4.8 oz. fabric with increased stretch for ultimate comfort.

**ARCH****NEW DESIGN** FIRST SHIP: 6/1/2026**GRADIENT DRIP****SPEED****SCOUT****ARMOURFUSE  
LONG SLEEVE ¼ ZIP****ADULT:** XS-2XL, OVERSIZE 3XL-4XL

STYLE	SIZE	PRICE
WGQZLM (M)	XS-2XL	\$134.00

New lightweight 4.8 oz. fabric with increased stretch for ultimate comfort.

**ARCH****NEW DESIGN** FIRST SHIP: 6/1/2026**GRADIENT DRIP****SPEED****SCOUT**

OVERSIZED SURCHARGE +\$5 PER SIZE | ADDITIONAL LENGTH OPTIONS FOUND ON PAGE 34



## ARMOURFUSE TRAINING

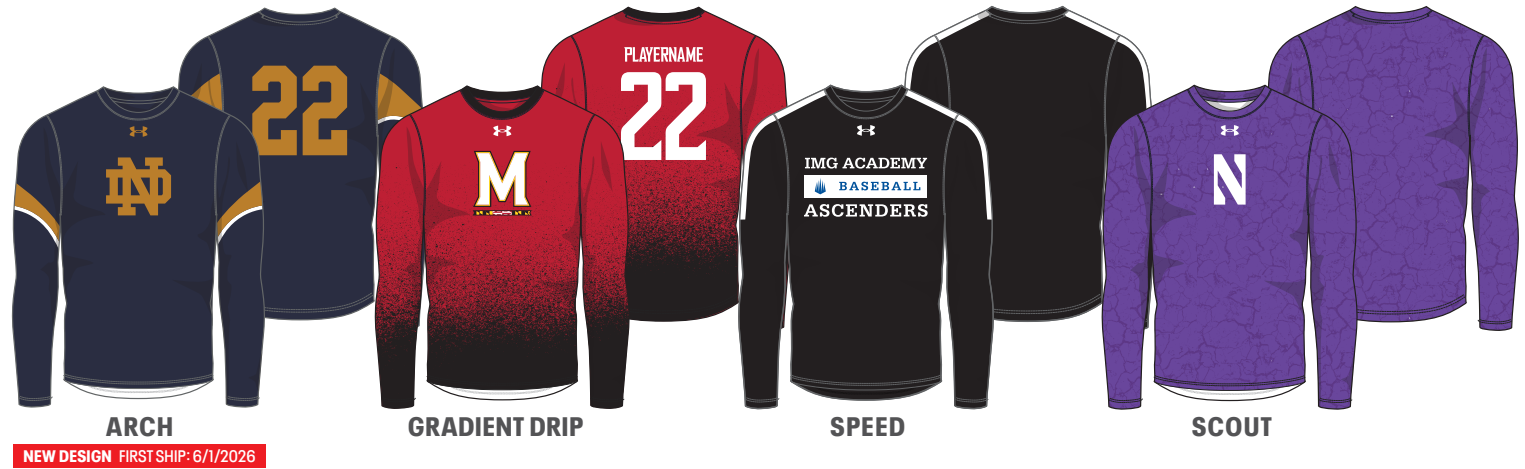
## ARMOURFUSE LONG SLEEVE TEE

**ADULT:** XS-2XL, OVERSIZE 3XL-4XL

**YOUTH:** YSM-YXL

STYLE	SIZE	PRICE
UJGJL2M (M)	XS-2XL	\$92.50
UJGJL2Y (Y)	YSM-YXL	\$88.50

New lightweight 4.8 oz. fabric with increased stretch for ultimate comfort.



## ARMOURFUSE SHORT SLEEVE TEE

**ADULT:** XS-2XL, OVERSIZE 3XL-4XL

**YOUTH:** YSM-YXL

LOOSE S S T	SIZE	PRICE
UJGJS2M (M)	XS-2XL	\$77.50
UJGJS2Y (Y)	YSM-YXL	\$73.00

New lightweight 4.8 oz. fabric with increased stretch for ultimate comfort.



OVERSIZED SURCHARGE +\$5 PER SIZE | ADDITIONAL LENGTH OPTIONS FOUND ON PAGE 34





ARMOURFUSE TRAINING

## ARMOURFUSE TRAINING SHORTS

ADULT: XS-2XL, OVERSIZE 3XL-5XL

YOUTH: YSM-YXL

POCKETED SHORT	SIZE	PRICE
UJGS3PM (M)	XS-2XL	\$77.50
UJGS3PY (Y)	YSM-YXL	\$72.00

NON-POCKETED SHORT	SIZE	PRICE
UJGS3M (M)	XS-2XL	\$72.00
UJGS3Y (Y)	YSM-YXL	\$67.00

7" INSEAM FOR POCKETED AND NON-POCKETED SHORT

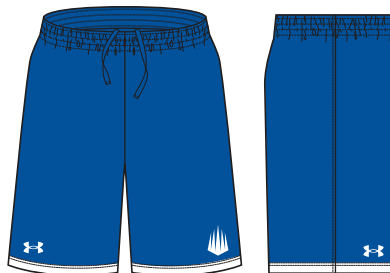


ARCH

NEW DESIGN FIRST SHIP: 6/1/2026



GRADIENT DRIP



SPEED



SCOUT

OVERSIZED SURCHARGE +\$5 PER SIZE | ADDITIONAL LENGTH OPTIONS FOUND ON PAGE 34



## ARMOURFUSE TRAINING

ARMOURFUSE TRAINING  
COMPRESSION TANK

ADULT: XS-2XL, OVERSIZE 3XL-4XL

STYLE	SIZE	PRICE
UJGJCTM (M)	XS-2XL	\$67.00



ARCH

NEW DESIGN FIRST SHIP: 6/1/2026

GRADIENT DRIP

SPEED

SCOUT

ARMOURFUSE TRAINING  
COMPRESSION SLEEVELESS

ADULT: XS-2XL, OVERSIZE 3XL-4XL

STYLE	SIZE	PRICE
UJGJCXM (M)	XS-2XL	\$67.00



ARCH

NEW DESIGN FIRST SHIP: 6/1/2026

GRADIENT DRIP

SPEED

SCOUT

OVERSIZED SURCHARGE +\$5 PER SIZE | ADDITIONAL LENGTH OPTIONS FOUND ON PAGE 34



## ARMOURFUSE TRAINING

ARMOURFUSE TRAINING  
COMPRESSION SLEEVELESS MOCK

ADULT: XS-2XL, OVERSIZE 3XL-4XL

STYLE	SIZE	PRICE
UJGJCM (M)	XS-2XL	\$72.00



ARCH

NEW DESIGN FIRST SHIP: 6/1/2026



GRADIENT DRIP



SPEED



SCOUT

ARMOURFUSE TRAINING  
COMPRESSION SHORT SLEEVE

ADULT: XS-2XL, OVERSIZE 3XL-4XL

STYLE	SIZE	PRICE
UJGJCS (M)	XS-2XL	\$67.00



ARCH

NEW DESIGN FIRST SHIP: 6/1/2026



GRADIENT DRIP



SPEED



SCOUT

OVERSIZED SURCHARGE +\$5 PER SIZE | ADDITIONAL LENGTH OPTIONS FOUND ON PAGE 34



## ARMOURFUSE TRAINING

ARMOURFUSE TRAINING  
COMPRESSION HALF SLEEVE

ADULT: XS-2XL, OVERSIZE 3XL-4XL

STYLE	SIZE	PRICE
UJGJHSM (M)	XS-2XL	\$72.00



ARCH

GRADIENT DRIP

SPEED

SCOUT

NEW DESIGN FIRST SHIP: 6/1/2026

ARMOURFUSE TRAINING  
COMPRESSION LONG SLEEVE

ADULT: XS-2XL, OVERSIZE 3XL-4XL

STYLE	SIZE	PRICE
UJGJCLM (M)	XS-2XL	\$77.50



ARCH

GRADIENT DRIP

SPEED

SCOUT

NEW DESIGN FIRST SHIP: 6/1/2026

OVERSIZED SURCHARGE +\$5 PER SIZE | ADDITIONAL LENGTH OPTIONS FOUND ON PAGE 34





# ARMOURFUSE TRAINING

Brilliant, vibrant team colors permanently fused directly into textiles. Limitless customization, all-inclusive pricing with exclusive UA designs and customized prints. 41 different colors and 18 prints available. 6 piece minimum order.





**ARMOURFUSE TRAINING**

**ARMOURFUSE TRAINING HOODY**

**ADULT:** XS-2XL, OVERSIZE 3XL

**YOUTH:** YSM-YXL

STYLE	SIZE	PRICE
UJGFHW (W)	XS-2XL	\$128.00
UJGFHY (Y)	YSM-YXL	\$117.50

8.26 oz. Fleece with stretch lined  
3-panel hood.



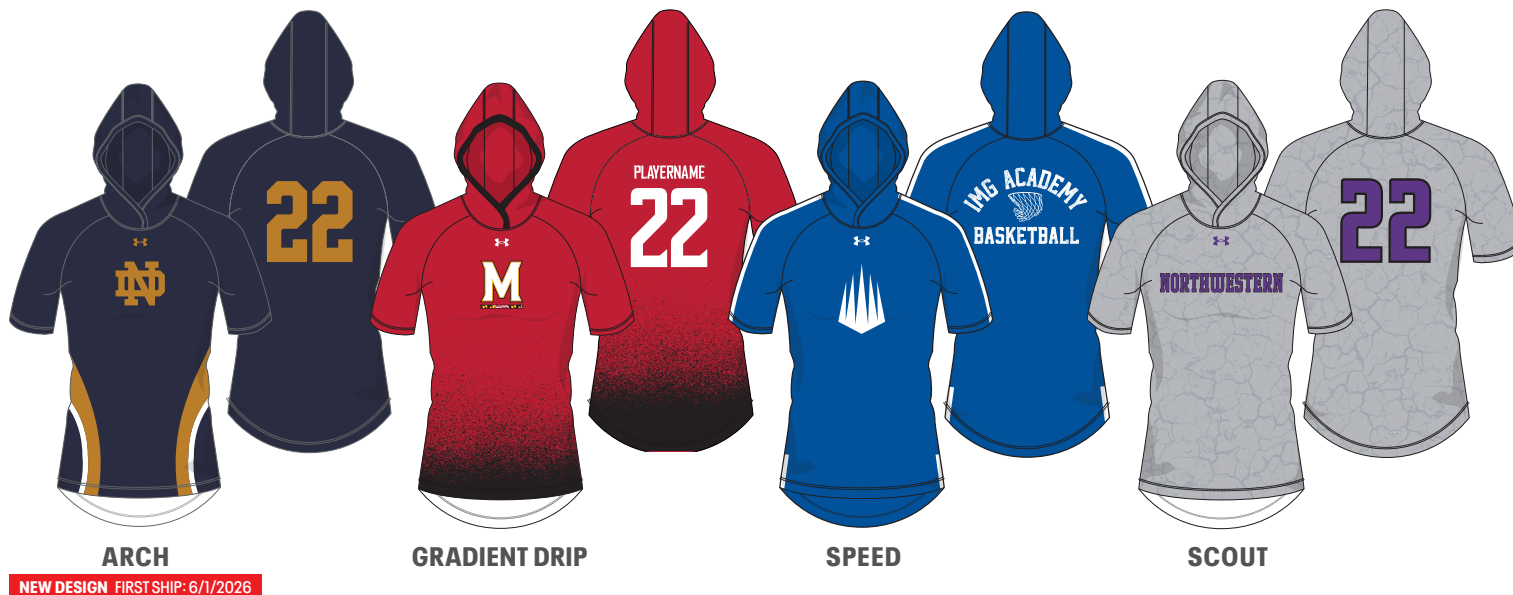
**ARMOURFUSE SHORT SLEEVE  
HOODED SHOOTER**

**ADULT:** XS-2XL, OVERSIZE 3XL

**YOUTH:** YSM-YXL

STYLE	SIZE	PRICE
UJGTSSW (W)	XS-2XL	\$117.50
UJGTSSY (Y)	YSM-YXL	\$112.50

New lightweight 4.8 oz. fabric with  
increased stretch for ultimate comfort.



OVERSIZED SURCHARGE +\$5 PER SIZE | ADDITIONAL LENGTH OPTIONS FOUND ON PAGE 34



**ARMOURFUSE TRAIN POLO**

**ADULT:** XS-2XL

**SHIP:** 6/1/2026

STYLE	SIZE	PRICE
UJGTPIW (W)	XS-2XL	\$110.00

86% Polyester, 14% Elastane- Lightweight fabric is super-comfortable, wicks, and dry's quickly. 2 Button CF Placket. Hem vent.



**ARCH**

NEW DESIGN FIRST SHIP: 6/1/2026

**SPEED**

**SCOUT**

OVERSIZED SURCHARGE +\$5 PER SIZE | ADDITIONAL LENGTH OPTIONS FOUND ON PAGE 34

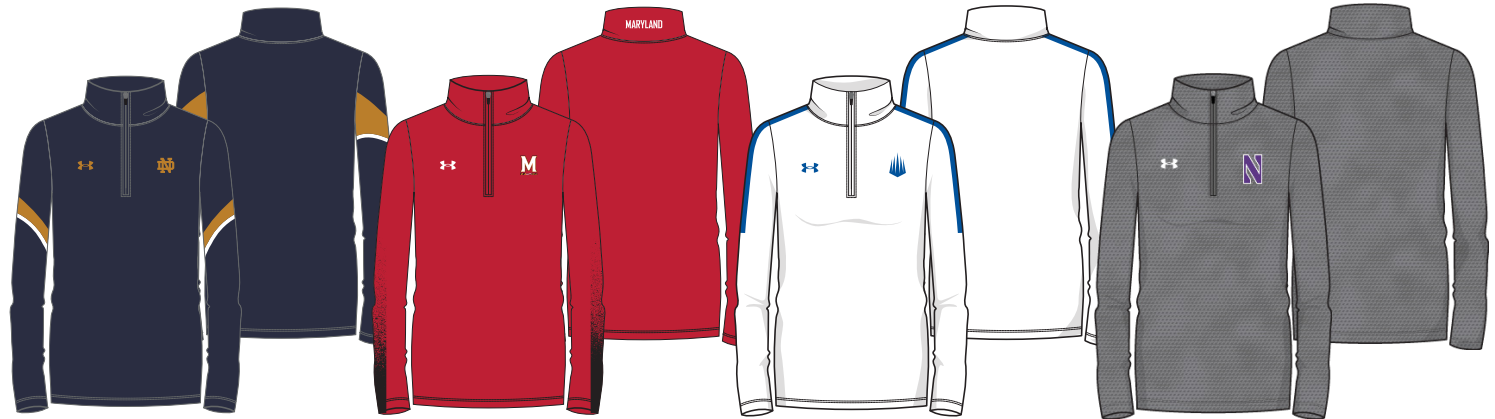
**ARMOURFUSE TRAINING**

**ARMOURFUSE  
LONG SLEEVE ¼ ZIP**

**ADULT:** XS-2XL, OVERSIZE 3XL

STYLE	SIZE	PRICE
UJGHZLW (W)	XS-2XL	\$134.00

New lightweight 4.8 oz. fabric with increased stretch for ultimate comfort.



**ARCH**

**NEW DESIGN** FIRST SHIP: 6/1/2026

**SPEED**

**SCOUT**

**ARMOURFUSE  
TRAINING SHORTS**

**ADULT:** XS-2XL, OVERSIZE 3XL

**YOUTH:** YSM-YXL

POCKETED SHORT	SIZE	PRICE
UJGS3PW (W)	XS-2XL	\$77.50
UJGS3PY (Y)	YSM-YXL	\$72.00

NON-POCKETED SHORT	SIZE	PRICE
UJGS3W (W)	XS-2XL	\$72.00
UJGS3Y (Y)	YSM-YXL	\$67.00

5" INSEAM FOR POCKETED AND NON-POCKETED SHORT



**ARCH**

**NEW DESIGN** FIRST SHIP: 6/1/2026

**SPEED**

**SCOUT**

OVERSIZED SURCHARGE +\$5 PER SIZE | ADDITIONAL LENGTH OPTIONS FOUND ON PAGE 34



**ARMOURFUSE TRAINING**

**ARMOURFUSE  
LONG SLEEVE TEE**

**ADULT:** XS-2XL, OVERSIZE 3XL

**YOUTH:** YSM-YXL

STYLE	SIZE	PRICE
UJGJL2W (W)	XS-2XL	\$92.50
UJGJL2Y (Y)	YSM-YXL	\$88.50

New lightweight 4.8 oz. fabric with increased stretch for ultimate comfort.



**ARMOURFUSE  
SHORT SLEEVE TEE**

**ADULT:** XS-2XL, OVERSIZE 3XL

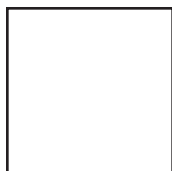
**YOUTH:** YSM-YXL

LOOSE S S T	SIZE	PRICE
UJGJS2W (W)	XS-2XL	\$77.50
UJGJS2Y (Y)	YSM-YXL	\$73.00

New lightweight 4.8 oz. fabric with increased stretch for ultimate comfort.



OVERSIZED SURCHARGE +\$5 PER SIZE | ADDITIONAL LENGTH OPTIONS FOUND ON PAGE 34

**ARMOUR***FUSE*

WHITE



BLACK



PITCH GRAY



GRAPHITE



BASEBALL GRAY



SILVER GRAY



OCEAN STORM



MIDNIGHT NAVY



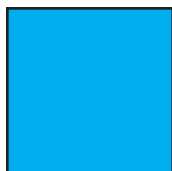
ROYAL



POWDERKEG BLUE



ELECTRIC BLUE



CAPRI



CAROLINA BLUE



COASTAL TEAL



PURPLE



MAROON



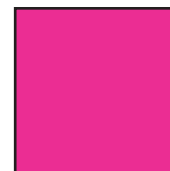
CARDINAL



CRIMSON



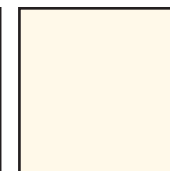
UNIVERSITY RED



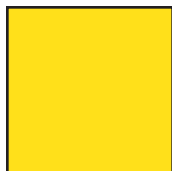
TROPIC PINK



PINK



VINTAGE WHITE



TAXI



CAMPUS GOLD



TENNESSEE ORANGE



DARK ORANGE



TEXAS ORANGE



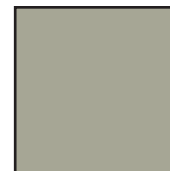
CLEVELAND BROWN



GOLD RUSH



TEAM VEGAS GOLD



GRAYSTONE



MILITARY GREEN



FOREST GREEN



TEAM KELLY GREEN



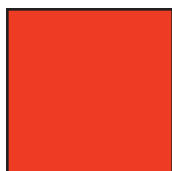
MIAMI TEAL



SEA GLASS



POISON

**FLUORESCENTS** (NOT CURRENTLY AVAILABLE IN TONAL PRINTS OR ON GAMEDAY PRODUCT)

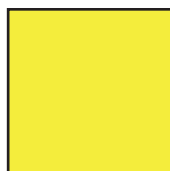
ORANGE FLUORESCENT



PINK FLUORESCENT



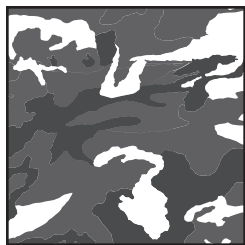
GREEN FLUORESCENT



YELLOW FLUORESCENT

**ARMOUR FUSE**

Prints available in all ArmourFuse colors. (Fluorescents not currently available in tonal prints)



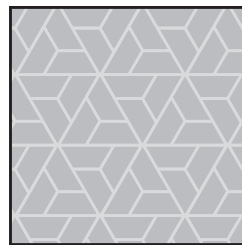
WOODLAND CAMO



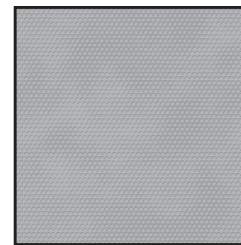
BENGAL



BLUR



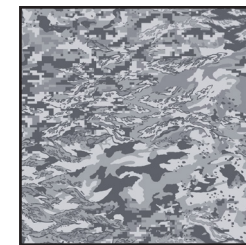
RAZOR



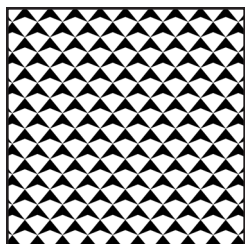
SCALE



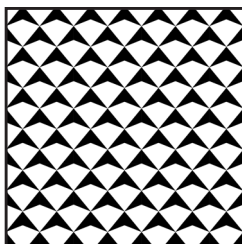
SPLINTER



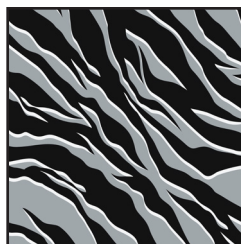
ABC CAMO



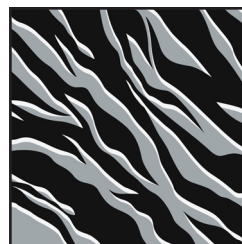
SHIELD MICRO



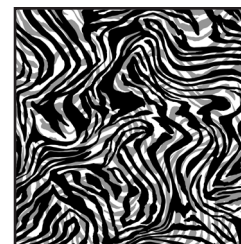
SHIELD MID



TIGER MICRO



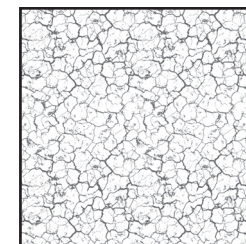
TIGER MACRO



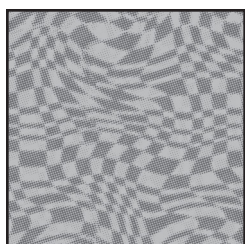
ZEBRA MICRO



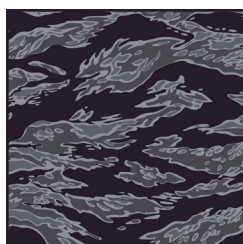
ZEBRA MACRO



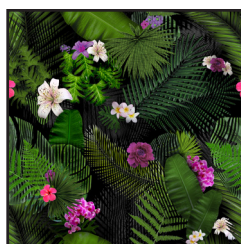
CRACKLE



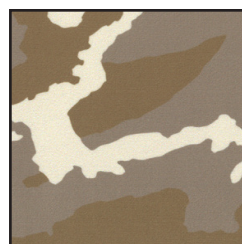
HAFTONE CHECKER



TIGER CAMO



FLORAL  
(Not available on Gameday)



DESERT  
WOODLAND CAMO  
(Locked color combinations,  
cannot be altered)





## FONT OPTIONS

## ATHLETIC SCRIPT

ABCDEFGHIJKLMNOPQRSTUVWXYZ  
abcdefghijklmnopqrstuvwxyz

## BADGER

ABCDEFGHIJKLMNOPQRSTUVWXYZ  
**0123456789**

## BEAR

ABCDEFGHIJKLMNOPQRSTUVWXYZ  
**0123456789**

## CADET

ABCDEFGHIJKLMNOPQRSTUVWXYZ  
**0123456789**

## FULL BLOCK

ABCDEFGHIJKLMNOPQRSTUVWXYZ  
**0123456789**

## MODERN

ABCDEFGHIJKLMNOPQRSTUVWXYZ  
**0123456789**

## PREMIER

ABCDEFGHIJKLMNOPQRSTUVWXYZ  
**0123456789**

## SWINGMAN

ABCDEFGHIJKLMNOPQRSTUVWXYZ  
abcdefghijklmnopqrstuvwxyz

## NOTE:

Gameday Select Package Pricing now includes all of the above listed fonts.  
Dropped fonts available for fill-in orders only.

## TERRAFONT

ABCDEFGHIJKLMNOPQRSTUVWXYZ  
**0123456789**

## TUSCAN

ABCDEFGHIJKLMNOPQRSTUVWXYZ  
**0123456789**

## UA COLLEGIATE SANS

ABCDEFGHIJKLMNOPQRSTUVWXYZ  
**0123456789**

## UA COLLEGIATE SANS CONDENSED

ABCDEFGHIJKLMNOPQRSTUVWXYZ  
**0123456789**

## UA COLLEGIATE SERIF

ABCDEFGHIJKLMNOPQRSTUVWXYZ  
**0123456789**

## UA COLLEGIATE SERIF CONDENSED

ABCDEFGHIJKLMNOPQRSTUVWXYZ  
**0123456789**

## UNDENIABLE

ABCDEFGHIJKLMNOPQRSTUVWXYZ  
**0123456789**

## LETTERING ARRANGEMENTS

## STRAIGHT

**TEAMNAME**

## BRIDGED

**TEAMNAME**

## SCRIPT WITH TAIL

*Teamname*

## ARCH

**TEAMNAME**

## VERTICAL ARCH

**TEAMNAME**

## STOCK DECORATION OPTIONS

SCREEN PRINT	ONE COLOR	TWO COLORS
Team Name	\$5.50	\$10.50
Team Mascot/Logo	\$5.50	\$10.50
Front + Back Numbers	\$12.00	\$17.00

TWILL	ONE COLOR	TWO COLORS
Team Name	\$22.00	\$27.00
Front + Back Numbers	\$27.00	\$32.00
Player Names	\$22.00	
ArmourFuse Twill Patch (Max 3"x3")	\$11.00	\$11.00

EMBROIDERY	ONE COLOR	TWO COLORS
Team Name (up to 2")	\$10.00	\$10.00
see page 34 for Embroidered Mascot/Logo pricing		

### ADDITIONAL STOCK OPTIONS & NOTES

- Player Numbers Per Location = 1/2 of above "Front + Back Numbers" pricing
- Player Name Directly On Jersey Only (No Nameplates)
- ArmourFuse Twill = Twill Pricing +\$10
- Add Tail to Script Font Twill Team Name +\$10
- Add Embroidery to Twill Tail +\$10
- Non-Stock designs and lettering may require additional charge at Under Armour's discretion (call for quote)

## STOCK OPTIONS

3/16" 1-COLOR PIPE	LIST PRICE
Around Placket (UBJ316P)	\$17.00
Sleeve Ends (UBJ316S)	\$17.00
Down Side (UBP316D)	\$17.00

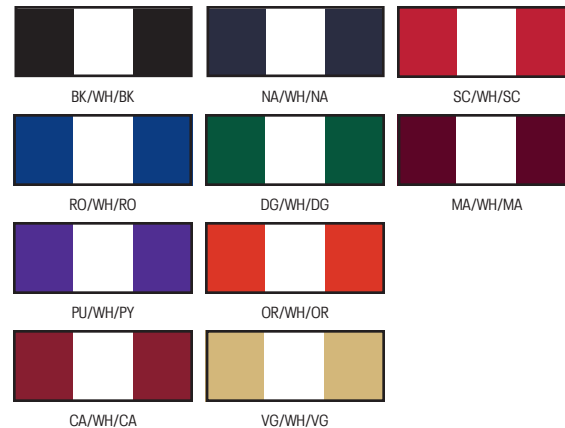
1/2" 3-COLOR BRAID	LIST PRICE
Around Placket (UBJ12AP)	\$17.00
Around Neck (UBJ12NB)	\$17.00
Sleeve Ends (UBJ12SE)	\$17.00
Down Sides (UBP12DS)	\$17.00

**NOTE:** Additional leadtime should be expected for orders including piping, braiding and/or hemming. Please contact a UA Sale Rep for updates.

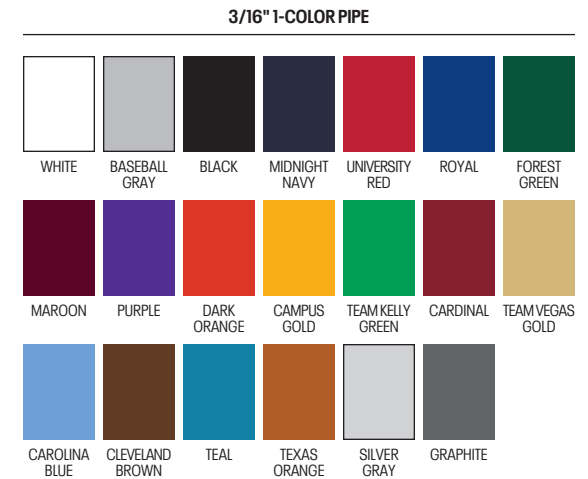
### 3/16" 1-COLOR PIPE AVAILABLE COLORS



### 1/2" 3-COLOR BRAID AVAILABLE COLORS



## GAMEDAY OPTIONS



### 1/2" 3-COLOR BRAID

**1 2 3 ANY COMBO OF PIPE COLORS**

### INCLUDED PIPE/BRAID

- 1. Jersey Front:** Around Neck **OR** Around Placket **OR** None  
**2. Jersey Sleeves:** Sleeve Ends **OR** None  
**3. Pants:** Down Side **OR** None

OPTIONAL PANT ALTERATIONS	LIST PRICE
Reduce Knicker Inseam 2" and Hem w/ Elastic	\$0.00
Increase Knicker Inseam 2" and Hem w/ Elastic	\$0.00
Increase Knicker Inseam 4" and Hem w/ Elastic*	\$15.00
Reduce Relaxed/Tapered Inseam 2" and Hem	\$0.00
Increase Relaxed/Tapered Inseam 2" and Hem	\$0.00
Increase Relaxed/Tapered Inseam 4" and Hem*	\$15.00

OPTIONAL ARMOURFUSE® TWILL (L X H)	LIST PRICE
Custom Font Team Name (Max. 14" x 4.25")	\$10.00
Custom Left Chest Team Logo (Max. 4" x 5")	\$15.00
Custom Sleeve Patch (Max. 4" x 4")	\$15.00
Custom Back Neck Patch (Max. 3" x 2")	\$15.00
Player Name (On Nameplate)	\$40.00
Player Name Directly on Jersey (No Nameplate)	\$30.00
Blank Nameplate	\$7.00
Add Tail to Script Font Team Name	\$20.00
Add Text to Script Font Tail	\$20.00

**Note:** Vector art must be provided for custom Armourfuse® Twill or additional artwork charges will apply

\*Available on Men's styles only



## ADDITIONAL LENGTH OPTIONS (ARMOURFUSE ONLY - \$10 FOR ALL -/+ OPTIONS)

### BASEBALL/SOFTBALL

TYPE	ADJUSTMENT	CODE
JERSEYS	Add 2" body length	UJX2BDY
	Add 4" body length	UJX4BDY
PANTS	Subtract 2" from inseam	UJSHTN2
	Add 2" to inseam length	UJX2INS
	Add 4" to inseam length	UJX4INS

### FOOTBALL

TYPE	ADJUSTMENT	CODE
JERSEYS	Subtract 2" body length	UJSHTN2
PANTS	Add 2" to inseam length	UJX2INS

### LACROSSE/ FIELD HOCKEY

TYPE	ADJUSTMENT	CODE
JERSEYS	Add 2" body length	UJX2BDY
SHORTS	Subtract 1" from inseam	UJSHTN1
	Subtract 2" from inseam	UJSHTN2
	Add 1" to inseam length	UJX1INS
	Add 2" to inseam length	UJX2INS
KILTS	Add 1" to inseam length	UJX1INS
	Add 2" to inseam length	UJX2INS

### BASKETBALL

TYPE	ADJUSTMENT	CODE
JERSEYS	Add 2" body length	UJX2BDY
	Add 4" body length	UJX4BDY
	Add 6" body length	UJX6BDY
SHORTS	Subtract 1" from inseam	UJSHTN1
	Add 1" to inseam length	UJX1INS
	Add 2" to inseam length	UJX2INS
	Add 3" to inseam length	UJX3INS
SHOOTING SHIRTS	Add 2" body, 1" sleeve	UJX2B1S
	Add 4" body, 2" sleeve	UJX4B2S
	Add 6" body, 3" sleeve	UJX6B3S

### SOCCER

TYPE	ADJUSTMENT	CODE
JERSEYS	Add 2" body length	UJX2BDY
SHORTS	Subtract 1" from inseam	UJSHTN1
	Subtract 2" from inseam	UJSHTN2
	Add 1" to inseam length	UJX1INS
	Add 2" to inseam length	UJX2INS

### TRACK & FIELD

TYPE	ADJUSTMENT	CODE
JERSEYS	Add 2" body length	UJX2BDY
LOOSE SHORTS*	Subtract 1" from inseam	UJSHTN1
	Add 1" to inseam length	UJX1INS

\*UJTS2M & UJTS2W ONLY

### TRAINING

TYPE	ADJUSTMENT	CODE
JERSEYS	Add 2" body length	UJX2BDY
	Add 4" body length	UJX4BDY
	Add 6" body length	UJX6BDY
SHORTS	Subtract 1" from inseam	UJSHTN1
	Subtract 2" from inseam	UJSHTN2
	Add 1" to inseam length	UJX1INS
	Add 2" to inseam length	UJX2INS
	Add 3" to inseam length	UJX3INS

### VOLLEYBALL

TYPE	ADJUSTMENT	CODE
JERSEYS	Add 2" body length	UJX2BDY
	Add 1" sleeve length	UJX1SL
SHORTS	Subtract 1" from inseam	UJSHTN1
	Subtract 2" from inseam	UJSHTN2

## STANDARD SLEEVE PRINT STRIPES

\*OPTIONS - Code numbers listed below stripe patterns

\*Stripes may be adjusted to fit smaller garments and not measure exactly as shown.



01



02



05



06



07



08



09

## EMBROIDERY

MASCOTS (STOCK ONLY)	LIST PRICE
Mascot	\$11.00
Mascot with One Line	\$12.00
Mascot with Two Lines	\$13.00
American Flag	\$11.00
Small/Homeplate	\$6.00
DIGITIZING (STOCK AND ARMOURFUSE ONLY)	LIST PRICE
Stock Designs and Lettering	\$180.00
Custom Logos	Call for Quote

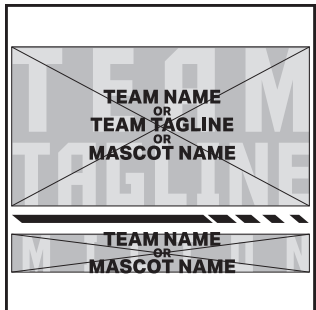
- Prices are based upon size of designs, not the number of colors. Prices are subject to change if design exceeds specifications.
- Dimensions are maximum space - unless specifically noted best judgement will be used.
- Letter styles are available horizontal or arched.
- No digitizing charge for team names.
- Flag size up to 2" by 3" (bigger area - call for quote)
- Minimum order charges apply for embroidery
- All designs require an additional digitizing charge, except:
  - 1) Digitized designs supplied on a disk
  - 2) Digitized design is a re-order of an existing design



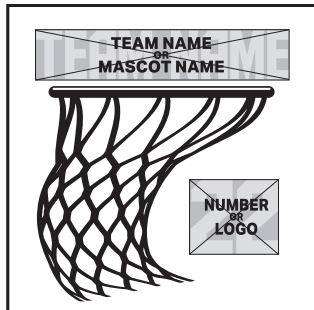


## ARMOURFUSE® GRAPHIC OPTIONS

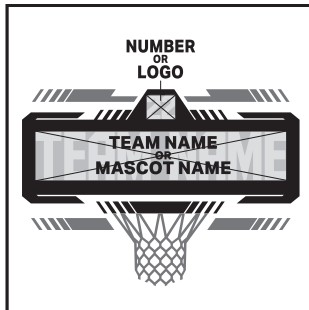
A



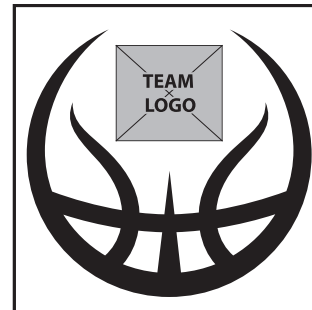
B



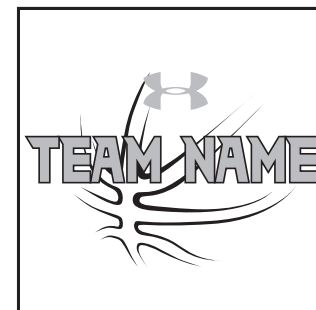
C



D



E



F



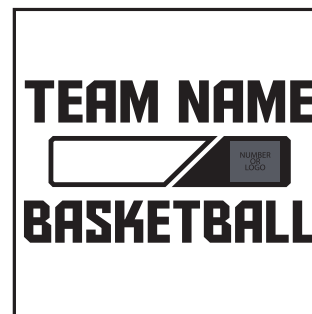
G



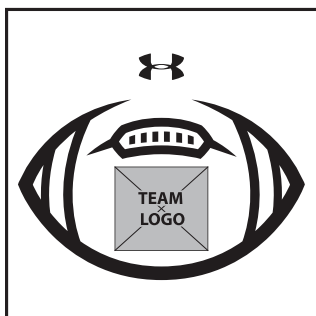
H



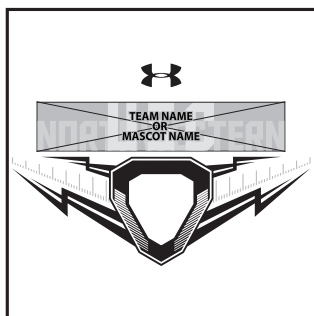
I



J



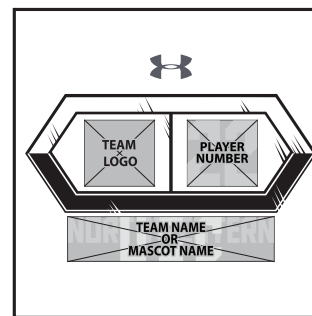
K



L



M





**GAMEDAY TEAM UNIFORMS**  
ORDERING INFORMATION AND CUSTOMER SERVICE:  
1-800-474-6118  
[www.uacustomuniforms.com](http://www.uacustomuniforms.com)



**ARMOURFUSE™ TEAM UNIFORMS**  
ORDERING INFORMATION AND CUSTOMER SERVICE:  
1-888-871-0990  
[www.underarmourteamuniforms.com](http://www.underarmourteamuniforms.com)



**STOCK TEAM UNIFORMS**  
ORDERING INFORMATION AND CUSTOMER SERVICE:  
1-888-871-0990  
[www.underarmourteamuniforms.com](http://www.underarmourteamuniforms.com)

## ORDERING INFORMATION

**Guarantee:** The materials and workmanship of our garments are guaranteed when given fair treatment and used under normal conditions.

**Color Matching:** Scientifically, it is not possible to achieve a perfect color match from one dye lot to another. Therefore, we cannot guarantee a perfect match from order to order or from one fabric to another.

**Color Abbreviation Key:** The following abbreviations may be used when ordering merchandise.

<b>BG</b> Baseball Gray	<b>EB</b> Electric Blue	<b>PI</b> Pink	<b>SI</b> Silver Gray
<b>BK</b> Black	<b>GP</b> Graphite	<b>PK</b> Powderkeg Blue	<b>TI</b> Taxi
<b>BR</b> Brown	<b>KE</b> Team Kelly Green	<b>PO</b> Poison	<b>TE</b> Teal
<b>CA</b> Cardinal	<b>LG</b> Steeltown Gold	<b>PU</b> Purple	<b>TO</b> Texas Orange
<b>CB</b> Carolina Blue	<b>MA</b> Maroon	<b>RO</b> Royal	<b>TP</b> Tropic Pink
<b>CP</b> Capri	<b>NA</b> Midnight Navy	<b>RU</b> Gold Rush	<b>VG</b> Team Vegas Gold
<b>DG</b> Forest Green	<b>OR</b> Dark Orange	<b>SC</b> University Red	<b>WH</b> White

**Price Policy:** All catalog prices are list or suggested retail. Prices are subject to change without notice. Merchandise will be invoiced based on the prices in effect at the time the order is placed.

**Terms:** Prices are FOB shipping point. Payment is due Net 30.

**Minimum Order Charges:** A handling charge of \$10.00 will be added to orders of less than \$150.00 list. Custom and GamedaySelect fill-in minimum order is 6 units per style and color. A 100% surcharge will be applied to orders of 1-2 units, and a 50% surcharge for orders of 3-5 units.

**Lettered Orders for COD Shipment:** A 50% deposit is required on all lettered orders calling for COD shipment.

**Delivery:** Shipments will always be made by the fastest, least expensive means possible. The customer will assume any additional expense required to expedite delivery.

**Order Cancellations:** Cancellations must be received at least one day prior to the ship date. Special order garments cannot be cancelled after they have been cut. Lettered garments cannot be cancelled after they have been printed or sewn.

**Returns:** Claims must be reported to our office within 10 working days of merchandise receipt. Returns cannot be made after 30 days of the invoice date. All returns for plain merchandise must be clearly marked with an authorization number or label obtained from our office. All returns for lettered merchandise must be clearly marked "LETTERING." When requesting an authorization label, the following information is required: Reason for return, Invoice #, Style #, Color, Size/Quantity. An authorization label will then be sent to you to prepare the merchandise for return shipment. We reserve the right to repair, replace or issue credit for any merchandise returned. A 15% restocking fee and shipping charges will be charged for merchandise returned that is either not damaged or the damage is determined not to be our fault. All worn garments must be properly laundered prior to return or they will not be accepted.

All custom and custom-stock uniforms may not be returned under any circumstances if delivered properly.

**Shortages:** All claims must be made within 10 days of the invoice date.

**New Accounts:** All new accounts must be opened through your local sales representative. New accounts that do not have a Dunn and Bradstreet rating will be shipped COD until a credit line has been established.

**Samples:** Samples will be entered and billed as a regular order. Samples cannot be returned without prior approval from our office.

**Imprint Orders:** All imprint orders must be emailed, mailed or faxed in with detailed instructions on UA order forms. Imprint orders will not be taken by phone. Once garments have been lettered, the order cannot be cancelled or returned.

Under Armour will not be responsible for any items not checked for order accuracy or sizing before being sent to a printer/screener. We will not be responsible for shrinkage, defects, or damages caused during the imprinting of our garments by sources other than our own lettering department. Screenprinting sublimated uniforms can cause color migration. We do not recommend screenprinting on sublimated garments.

Photography is the property of Under Armour and is not to be used without written authorization.

## UNIFORM CARE INSTRUCTIONS

To enhance the appearance and extend the life of your uniforms, Under Armour recommends that you follow these cleaning and storing procedures:

**DO NOT DRY CLEAN**

**DO NOT WASH IN HOT WATER**

**DO NOT USE CHLORINE BLEACH**

**DO NOT USE FABRIC SOFTENER**

**DO NOT WASH WHITES AND COLORS TOGETHER**

**DO NOT OVERLOAD THE WASHING MACHINE**

**DO NOT MACHINE DRY ON HIGH HEAT**

**DO NOT LEAVE WET OR DAMP GARMENTS IN YOUR TRAVEL BAG, IN A PILE WITH OTHER CLOTHING OR IN WASHING MACHINE**

- Pre wash uniform prior to use.
- Uniforms should always be laundered immediately after wearing. However, if this is not possible, rinse garments and hang individually on rust-proof hangers. (Moisture may cause color migration of acid dyes so we advise separating wet or damp uniforms.)
- Belts and any other contrasting color items should be washed separately from the garment.
- It is always advisable to test wash a single uniform according to directions before washing an entire load.
- Wash and rinse all garments in warm water (approx. 110°) with mild detergent. Remove promptly after wash cycle.
- For optimum results, hang garments (especially those with elastane) to dry. If you cannot hang dry, machine dry on the lowest setting. Turn jerseys inside out before machine drying. Remove items from dryer immediately upon completion of the cycle. (Excessive heat can cause fabric shrinkage, discoloration, and cracking and peeling of vinyl plastisol lettering inks.)
- Make sure uniforms are completely dry before storing. Store in a dry area to prevent mildew. Protect them from sunlight and fluorescent light to prevent yellowing.

**PLEASE NOTE:** Under Armour will not be responsible for uniforms that are damaged due to improper care and maintenance. Failure to follow our specified care instructions will void all guarantees.

## UNIFORM FILL-IN LIFECYCLE

LAST SHOWN IN CATALOG	LAST FILL-IN SEASON	LAST FILL-IN SHIP
WI'22	WI'25	3/15/2026
SP'23	SP'26	6/15/2026
FA'23	FA'26	12/15/2026
W'23	W'26	3/15/2027
SP'24	SP'27	6/15/2027
FA'24	FA'27	12/15/2027
WI'24	WI'27	3/15/2028
SP'25	SP'28	6/15/2028
FA'25	FA'28	12/15/2028
W'25	W'28	3/15/2029
SP'26	SP'29	6/15/2029
FA'26	FA'29	12/15/2029



## MEN'S



### COMPRESSION

Ultra-tight, second skin fit that keeps you locked in & makes you feel like you can do anything.



### FITTED

A slimmer, athletic cut that allows total mobility but eliminates the bulk of extra fabric.



### REGULAR

Fuller cut for complete comfort, total range of motion & greater breathability.



### HOW TO MEASURE

**CHEST:** Place the tape measure under your arms at the fullest part of your chest, wrap around your body until your fingers meet and mark the measurement

**WAIST:** Measure around your natural waistline - right above your hips. Be careful not to squeeze too tight to allow a little give.

**HIPS:** With your feet together, measure around the fullest part of your hips to ensure you'll have enough room to move comfortably.

	US SIZE	CHEST (IN)	WAIST (IN)	HIP (IN)
SM	26-28	34-37	29-31	34-36
MD	30-32	37-41	31-34	36-39
LG	34-36	41-44	34-37	39-42
XL	38-40	44-48	37-41	42-46
2XL	42-44	48-52	41-45.5	46-50
3XL	46-48	52-56	45.5-50	50-54
4XL	50-52	56-60	50-54.5	54-58
5XL	54-56	60-64	54.5-59	58-62

REGULAR	UP TO 6'1"
TALL	6'1" - 6'4"
2T	6'4" - 6'7"
3T	6'7" AND TALLER

## BOYS



### FITTED

A slimmer, athletic cut that allows total mobility but eliminates the bulk of extra fabric.



### REGULAR

Fuller cut for complete comfort, total range of motion & greater breathability.



### HOW TO MEASURE

**CHEST:** Place the tape measure under your arms at the fullest part of your chest, wrap around your body until your fingers meet and mark the measurement

**WAIST:** Measure around your natural waistline - right above your hips. Be careful not to squeeze too tight to allow a little give.

**HIPS:** With your feet together, measure around the fullest part of your hips to ensure you'll have enough room to move comfortably.

	US SIZE	CHEST (IN)	WAIST (IN)	HIP (IN)
YXS	7	25-26	23-24	26-27
YSM	8	26-27	24-25	27-28
YMD	10-12	27-29	25-27	28-31
YLG	14-16	29-32.5	27-30	31-34
YXL	18-20	32.5-35.5	30-33	34-37





## WOMEN'S



### COMPRESSION

Ultra-tight, second skin fit that keeps you locked in & makes you feel like you can do anything.



### FITTED

Sits close to the skin for a streamlined fit without the squeeze of compression.



### REGULAR

Fuller, more generous cut for enhanced range of motion & an effortlessly relaxed fit.



### HOW TO MEASURE

**CHEST:** Place the tape measure under your arms at the fullest part of your chest, wrap around your body until your fingers meet and mark the measurement

**WAIST:** Measure around your natural waistline - right above your hips. Be careful not to squeeze too tight to allow a little give.

**HIPS:** With your feet together, measure around the fullest part of your hips to ensure you'll have enough room to move comfortably.

	US SIZE	CHEST (IN)	WAIST (IN)	HIP (IN)
XS	0-2	32.5-33.5	25.5-27	34.5-36
SM	4-6	33.5-36	27-29	36-38
MD	8-10	36-38	29-31	38-40
LG	12-14	38-41	31-34	40-43
XL	16	41-44	34-37	43-46
2XL	18	44-47	37-40	46-49
3XL	20	47-50	40-43	49-52
4XL	22	50-53	43-46	52-55

SHORT	5'4" AND SHORTER
REGULAR	UP TO 5'8"
TALL	5'8" - 5'11"
2T	5'11" - 6'2"
3T	6'2" AND TALLER

## GIRLS



### FITTED

Sits close to the skin for a streamlined fit without the squeeze of compression.



### REGULAR

Fuller, more generous cut for enhanced range of motion & an effortlessly relaxed fit.



### HOW TO MEASURE

**CHEST:** Place the tape measure under your arms at the fullest part of your chest, wrap around your body until your fingers meet and mark the measurement

**WAIST:** Measure around your natural waistline - right above your hips. Be careful not to squeeze too tight to allow a little give.

**HIPS:** With your feet together, measure around the fullest part of your hips to ensure you'll have enough room to move comfortably.

	US SIZE	CHEST (IN)	WAIST (IN)	HIP (IN)
YXS	7	25-26.5	23-24	26-28
YSM	8	26.5-27.5	24-24.5	28-29
YMD	10-12	27.5-30.5	24.5-26.5	29-32.5
YLG	14-16	30.5-34	26.5-30.5	32.5-36.5
YXL	18-20	34-36	30.5-32.5	36.5-38.5

## WEST

GREG ROMINE  
719.238.9244  
gromine@underarmour.com  
HI // CA // TX

ANNA ROPER  
443.404.6237  
aroper@underarmour.com  
AK // WA // OR // ID // MT // WY // NV

SHANNON BECKER  
shannon.becker@underarmour.com  
845.453.6117  
IA // MN // NE // ND // SD

FRANK WEBER  
618.540.3955  
fweber@underarmour.com  
IL // MO // KS // OK // CO // NM // UT // AZ

## EAST

MONTE GIBBS  
662.801.3039  
mgibbs@underarmour.com  
TN // LA // AL // MS // AR // KY

DAN WILLIAMS  
352.672.1676  
dwilliams@underarmour.com  
NC // SC // GA // FL

TONY DONOFRIO  
NATIONAL SALES MANAGER  
419.356.9742  
tonyd@underarmour.com  
WI // MI // IN // OH

GARY POWERS  
410.746.3790  
gpowers@underarmour.com  
MD // DC // VA // WV // Eastern PA

BOB BARTLETT  
315.380.6505  
bobb@underarmour.com  
NY // Western PA

JAY KELLEHER  
443.615.0462  
jkelleher@underarmour.com  
New England // NJ

## COLLEGIATE

TOMMY AMICO  
951.808.0367  
tamico@underarmour.com  
WEST

TODD LOCKLEAR  
410.454.6572  
tlocklear@underarmour.com  
EAST

CHRIS PORTS  
443.220.1009  
cports@underarmour.com  
MID ATLANTIC

BELLA GARONE  
631.307.0009  
isabella.garone@underarmour.com  
NORTHEAST

BRIAN SWATEK  
bswatek@underarmour.com  
SOUTH

DAN LAWLER  
dlawler@underarmour.com  
MIDWEST

## LICENSEES

MOMENTEC BRANDS  
Stock & Armourfuse Uniforms  
www.underarmourteamuniforms.com  
888.871.0990  
UAorders@momentecbrands.com

POWERS ATHLETIC  
Custom Uniforms  
www.uacustomuniforms.com  
800.474.6118  
customerservice@powersathletic.com

THE GAME  
Custom Headwear  
www.uateamheadwear.com  
800.723.5656  
customerservice@2thegame.com

USB  
McDavid & Shock Doctor  
Water Bottles  
657.383.4438  
UA@unitedspb.com

SAFILO  
Eyewear  
uateamsportsorders@safilo.com



TEL: 1.888.828.1547 / B2B: ARMOURHOUSE.UNDERARMOUR.COM

### COLLEGIATE

TEAMSPTS COLLEGIATE / TEAMSPTS.COLLEGIATE@UNDERARMOUR.COM

### EAST

TEAM SPORTS SE / TEAMSPTSSE@UNDERARMOUR.COM  
TEAM SPORTS NE / TEAMSPTSNE@UNDERARMOUR.COM

### WEST

TEAM SPORTS WC / TEAMSPTSWC@UNDERARMOUR.COM  
TEAM SPORTS SW / TEAMSPTS@UNDERARMOUR.COM

**ALL TEAM SPORTS ORDERS AND QUESTIONS PLEASE USE THE FOLLOWING:**

1.888.828.1547  
Corporate Headquarters  
1020 Hull Street  
Baltimore, MD 21230

**CORPORATE OFFICE HOURS OF OPERATION**

Monday through Friday, 8:30am – 5:30pm, EST.

**UNDER ARMOUR® B2B – ONLINE ORDERING**

[armourhouse.underarmour.com](http://armourhouse.underarmour.com)

- 24/7 access to check inventory and place orders
- Ability to track orders and shipments
- Priority product allocation
- Faster processing time

**UNDER ARMOUR® B2B – SUPPORT**

[B2B\\_support@underarmour.com](mailto:B2B_support@underarmour.com)

**UNDER ARMOUR® RETURN POLICY**

Under Armour® stands behind its gear and EXPECTS nothing less than perfection. If you have received a defective product, an incorrect size, or an incorrect order, please contact us immediately for a return authorization number so that we can quickly process your return and ensure your satisfaction.

ALL RETURNS MUST BE COMPLETED WITHIN 30 DAYS OF RECEIPT AND MUST BE IN REASONABLE CONDITION. ALL RETURNS MUST HAVE THE RA# CLEARLY MARKED ON THE CARTON. ALL RETURNS ARE SUBJECT TO A 15% RESTOCKING FEE.

Should you need to return or exchange an item, you MUST include your RA#, a copy of your invoice, and an explanation in writing as to why you are returning the item. Send your return to the marked address on your pack list. If you are exchanging merchandise, you are responsible for the cost of returning the product. Original shipping costs are non-refundable. All returned merchandise must be received in new, resalable condition.

**ODH RETURNS:**

Under Armour Returns  
RA#  
7030 Tradepoint Ave  
Dock Door 69  
Sparrows Point, MD 21219

**RIALTO RETURNS:**

Under Armour Returns  
RA#  
2510 W Walnut Ave  
Rialto, CA 92376

**NASHVILLE RETURNS:**

Under Armour Returns  
RA#  
13 Athlete's Way  
Mt Juliet, TN 37122

**UNDER ARMOUR® CANCELLATION POLICY**

Any request for cancellation of an order for UA products must be made, in writing, through the customer's UA Sales Representative. A request to cancel an order must be made more than 30 days before the customer's original desired ship date. All cancellations are subject to UA approval.

**ALL PRICES SET FORTH HEREIN ARE SUBJECT TO CHANGE WITHOUT NOTICE.**



**UNDER ARMOUR PERFORMANCE**  
2026