

NAVY



HOPKINS



WRESTLING

Winter 2022



UNDER ARMOUR

**THE ONLY
WAY IS
THROUGH.**



VISION

**TO INSPIRE YOU WITH PERFORMANCE
SOLUTIONS YOU NEVER KNEW
YOU NEEDED BUT CAN'T IMAGINE
LIVING WITHOUT.**

MISSION

**UNDER ARMOUR
MAKES YOU BETTER.**

WRESTLING —

MEN'S/WOMEN'S/YOUTH

002 WRESTLING UNIFORMS

014 UNIFORM ORDERING INFO



WRESTLING GAMEDAY SELECT

- Signature Under Armour® fabrications
- Lightweight, 4-way stretch, moisture transport, maximum breathability
- Brilliant, vibrant team colors permanently fused directly into textiles

NEW

GDS ARMOURFUSE® SINGLET

FIRST SHIP: 7/29/2022 //
XS-2XL, OVERSIZE 3XL, YXS-YLG

REVERSAL 2.0	SIZE	PRICE
UW041SM (M)	XS-2XL	\$130.00
UW041SW (W)	XS-2XL	\$130.00
UW041SY (Y)	YXS-YLG	\$105.00

- Fully sublimated singlet
- NEW Reflexx Armourvent engineered mesh back panel for breathability
- Light weight polyester/spandex for better fit and performance



REVERSAL 2.0

BASE UNIFORM APPROVED FOR HS PLAY // OVERSIZED SURCHARGE +\$5 PER SIZE



GAMEDAY SELECT UNIFORMS // ORDERING INFORMATION AND CUSTOMER SERVICE: 1-800-474-6118 // www.uacustomuniforms.com

FILL-IN LIFECYCLE TIMING FOUND ON PAGE 18. DECORATION OPTIONS AND ORDERING INFORMATION ARE AVAILABLE ON PAGES 14-18.

GDS ARMOURFUSE® SINGLET

XS-2XL, OVERSIZE 3XL, YXS-YLG

ESCAPE	SIZE	PRICE
UW038SM (M)	XS-2XL	\$125.00
UW038SW (W)	XS-2XL	\$125.00
UW038SY (Y)	YXS-YLG	\$100.00

- Fully sublimated singlet
- NEW lighter weight polyester/spandex for better fit and performance

4 print patterns available: Blur, Scale, Digi and Bengal.
 To achieve a solid neck, armhole and bottom leg, choose one of the patterns and make both colors the same. Not the tonal color way of the print.



ESCAPE

BASE UNIFORM APPROVED FOR HS PLAY // OVERSIZED SURCHARGE +\$5 PER SIZE



GDS ARMOURFUSE® SINGLET

XS-2XL, OVERSIZE 3XL, YXS-YLG

WILDCAT 2.0	SIZE	PRICE
UW037SM (M)	XS-2XL	\$125.00
UW037SW (W)	XS-2XL	\$125.00
UW037SY (Y)	YXS-YLG	\$100.00

- Fully sublimated singlet
- NEW lighter weight polyester/spandex for better fit and performance

WILDCAT 2.0

BASE UNIFORM APPROVED FOR HS PLAY // OVERSIZED SURCHARGE +\$5 PER SIZE



GAMEDAY SELECT UNIFORMS // ORDERING INFORMATION AND CUSTOMER SERVICE: 1-800-474-6118 // www.uacustomuniforms.com

FILL-IN LIFECYCLE TIMING FOUND ON PAGE 18. DECORATION OPTIONS AND ORDERING INFORMATION ARE AVAILABLE ON PAGES 14-18.

GDS ARMOURFUSE® SINGLET

XS-2XL, OVERSIZE 3XL, YXS-YLG

BADGER	SIZE	PRICE
UW028SM (M)	XS-2XL	\$125.00
UW028SW (W)	XS-2XL	\$125.00
UW028SY (Y)	YXS-YLG	\$100.00

COWBOY	SIZE	PRICE
UW026SM (M)	XS-2XL	\$125.00
UW026SW (W)	XS-2XL	\$125.00
UW026SY (Y)	YXS-YLG	\$100.00

COYOTE	SIZE	PRICE
UW029SM (M)	XS-2XL	\$125.00
UW029SW (W)	XS-2XL	\$125.00
UW029SY (Y)	YXS-YLG	\$100.00

- Fully sublimated singlet
- Lightweight Polyester/Spandex for breathability and exceptional durability



BADGER

BASE UNIFORM APPROVED FOR HS PLAY // OVERSIZED SURCHARGE +\$5 PER SIZE



GAMEDAY SELECT UNIFORMS // ORDERING INFORMATION AND CUSTOMER SERVICE: 1-800-474-6118 // www.uacustomuniforms.com

FILL-IN LIFECYCLE TIMING FOUND ON PAGE 18. DECORATION OPTIONS AND ORDERING INFORMATION ARE AVAILABLE ON PAGES 14-18.

GAMEDAY SELECT



GAMEDAY SELECT WRESTLING



COWBOY BACK VIEW



COWBOY



COYOTE

BASE UNIFORM APPROVED FOR HS PLAY // OVERSIZED SURCHARGE +\$5 PER SIZE



GAMEDAY SELECT UNIFORMS // ORDERING INFORMATION AND CUSTOMER SERVICE: 1-800-474-6118 // www.uacustomuniforms.com

FILL-IN LIFECYCLE TIMING FOUND ON PAGE 18. DECORATION OPTIONS AND ORDERING INFORMATION ARE AVAILABLE ON PAGES 14-18.

UNDER ARMOUR® TEAM W22  UATEAMCATALOGS.COM

GDS ARMOURFUSE® SINGLET

XS-2XL, OVERSIZE 3XL, YXS-YLG

SPARTAN	SIZE	PRICE
UW017SM (M)	XS-2XL	\$125.00
UW017SW (W)	XS-2XL	\$125.00
UW017SY (Y)	YXS-YLG	\$100.00

TIGER	SIZE	PRICE
UW018SM (M)	XS-2XL	\$125.00
UW018SW (W)	XS-2XL	\$125.00
UW018SY (Y)	YXS-YLG	\$100.00

- Fully sublimated singlet
- Lightweight Polyester/Spandex for breathability, and exceptional durability
- Gripper at leg opening to lock singlet in place



SPARTAN

TIGER

BASE UNIFORM APPROVED FOR HS PLAY // OVERSIZED SURCHARGE +\$5 PER SIZE



GAMEDAY SELECT UNIFORMS // ORDERING INFORMATION AND CUSTOMER SERVICE: 1-800-474-6118 // www.uacustomuniforms.com

FILL-IN LIFECYCLE TIMING FOUND ON PAGE 18. DECORATION OPTIONS AND ORDERING INFORMATION ARE AVAILABLE ON PAGES 14-18.

GDS ARMOURFUSE® SINGLET GLOBAL - INTERNATIONAL

LAST SHIP: 1/1/2023 //
SM-2XL, OVERSIZE 3XL

STYLE	COLOR	SIZE	PRICE
UW013SM (M)	RED	SM-2XL	\$125.00
UW014SM (M)	BLUE	SM-2XL	\$125.00

- Fully sublimated polyester/spandex fabrication
- Intended for **INTERNATIONAL COMPETITION**
- Locked Options compliant with UWW standards:
- Red and Blue colors with Country Flag
- Wrestler Name & Country Abbreviation
- UWW Logo on Right Leg

GDS ARMOURFUSE® SINGLET GLOBAL - DOMESTIC

LAST SHIP: 1/1/2023 //
SM-2XL, OVERSIZE 3XL

STYLE	SIZE	PRICE
UW012SM (M)	SM-2XL	\$125.00

- Fully sublimated polyester/spandex fabrication
- Intended for **DOMESTIC COMPETITION**
- The "unlocked" version of our International Singlet removes the Country Flag, Text on Singlet Back, and UWW Logo
- Allows for custom placement of logos, and use of all Armourfuse prints



INTERNATIONAL

DOMESTIC

BASE UNIFORM APPROVED FOR HS PLAY // OVERSIZED SURCHARGE +\$5 PER SIZE



GAMEDAY SELECT UNIFORMS // ORDERING INFORMATION AND CUSTOMER SERVICE: 1-800-474-6118 // www.uacustomuniforms.com

FILL-IN LIFECYCLE TIMING FOUND ON PAGE 18. DECORATION OPTIONS AND ORDERING INFORMATION ARE AVAILABLE ON PAGES 14-18.

GDS ARMOURFUSE® FIGHT SHIRT

XS-2XL, OVERSIZE 3XL, YSM-YLG

PIN	SIZE	PRICE
UW021JM (M)	XS-2XL	\$95.00
UW021JW (W)	XS-2XL	\$95.00
UW021JY (Y)	YSM-YLG	\$85.00

- Signature HeatGear 4-way stretch fabric
- 3" Drop Tail for 2-Piece regulation compliance

GDS ARMOURFUSE® FIGHT SHORT

SM-2XL, OVERSIZE 3XL, YSM-YLG

PIN	SIZE	PRICE
UW022FM (M)	SM-2XL	\$125.00
UW022FW (W)	XS-2XL	\$125.00
UW022FY (Y)	YSM-YLG	\$105.00

- Fully sublimated stretch woven fabric
- Gripper internal waistband to lock Fight Shirt in place
- 9" inseam



PIN BACK VIEW

PIN

BASE UNIFORM APPROVED FOR HS PLAY // OVERSIZED SURCHARGE +\$5 PER SIZE



GAMEDAY SELECT UNIFORMS // ORDERING INFORMATION AND CUSTOMER SERVICE: 1-800-474-6118 // www.uacustomuniforms.com

FILL-IN LIFECYCLE TIMING FOUND ON PAGE 18. DECORATION OPTIONS AND ORDERING INFORMATION ARE AVAILABLE ON PAGES 14-18.

GDS ARMOURFUSE® FIGHT SHIRT

XS-2XL, OVERSIZE 3XL, YSM-YLG

FREESTYLE	SIZE	PRICE
UW023JM (M)	XS-2XL	\$95.00
UW023JW (W)	XS-2XL	\$95.00
UW023JY (Y)	YSM-YLG	\$85.00

- Signature HeatGear 4-way stretch fabric
- 3" Drop Tail for 2-Piece regulation compliance

GDS ARMOURFUSE® FIGHT SHORT

SM-2XL, OVERSIZE 3XL, YSM-YLG

FREESTYLE	SIZE	PRICE
UW024FM (M)	SM-2XL	\$125.00
UW024FW (W)	XS-2XL	\$125.00
UW024FY (Y)	YSM-YLG	\$105.00

- Fully sublimated stretch woven fabric
- Gripper internal waistband to lock Fight Shirt in place
- 9" inseam



FREESTYLE

BASE UNIFORM APPROVED FOR HS PLAY // OVERSIZED SURCHARGE +\$5 PER SIZE



GAMEDAY SELECT UNIFORMS // ORDERING INFORMATION AND CUSTOMER SERVICE: 1-800-474-6118 // www.uacustomuniforms.com

FILL-IN LIFECYCLE TIMING FOUND ON PAGE 18. DECORATION OPTIONS AND ORDERING INFORMATION ARE AVAILABLE ON PAGES 14-18.

GDS ARMOURFUSE® FIGHT SHIRT

XS-2XL, OVERSIZE 3XL, YSM-YLG

BADGER	SIZE	PRICE
UW032JM (M)	XS-2XL	\$95.00
UW032JW (W)	XS-2XL	\$95.00
UW032JY (Y)	YSM-YLG	\$85.00

- Signature HeatGear 4-way stretch fabric
- 3" Drop Tail for 2-Piece regulation compliance

GDS ARMOURFUSE® FIGHT SHORT

SM-2XL, OVERSIZE 3XL, YSM-YLG

BADGER	SIZE	PRICE
UW033FM (M)	SM-2XL	\$125.00
UW033FW (W)	SM-2XL	\$125.00
UW033FY (Y)	YSM-YLG	\$105.00

- Fully sublimated stretch woven fabric
- Gripper internal waistband to lock Fight Shirt in place



BADGER

BASE UNIFORM APPROVED FOR HS PLAY // OVERSIZED SURCHARGE +\$5 PER SIZE



GAMEDAY SELECT UNIFORMS // ORDERING INFORMATION AND CUSTOMER SERVICE: 1-800-474-6118 // www.uacustomuniforms.com

FILL-IN LIFECYCLE TIMING FOUND ON PAGE 18. DECORATION OPTIONS AND ORDERING INFORMATION ARE AVAILABLE ON PAGES 14-18.

GDS ARMOURFUSE® FIGHT SHIRT

XS-2XL, OVERSIZE 3XL, YSM-YLG

BASIC	SIZE	PRICE
UW025JM (M)	XS-2XL	\$95.00
UW025JW (W)	XS-2XL	\$95.00
UW025JY (Y)	YSM-YLG	\$85.00

- Signature HeatGear 4-way stretch fabric
- 3" Drop Tail for 2-Piece regulation compliance

GDS ARMOURFUSE® FIGHT SHORT

SM-2XL, OVERSIZE 3XL, YSM-YLG

BASIC	SIZE	PRICE
UW001FM (M)	SM-2XL	\$125.00
UW036FW (W)	SM-2XL	\$125.00
UW001FY (Y)	YXS-YLG	\$105.00

- Fully sublimated stretch woven fabric with stretch mesh gusset for breathability
- Gripper internal waistband to lock your Fight Shirt in place



BASIC

FIGHT SHORT DESIGN SHOWN = UW001FM/T, UW001FY/T

BASE UNIFORM APPROVED FOR HS PLAY // OVERSIZED SURCHARGE +\$5 PER SIZE



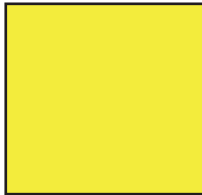
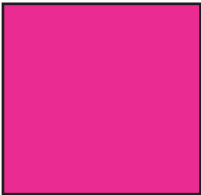
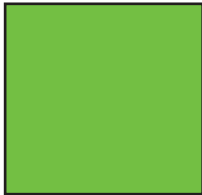

GAMEDAY SELECT UNIFORMS // ORDERING INFORMATION AND CUSTOMER SERVICE: 1-800-474-6118 // www.uacustomuniforms.com

FILL-IN LIFECYCLE TIMING FOUND ON PAGE 18. DECORATION OPTIONS AND ORDERING INFORMATION ARE AVAILABLE ON PAGES 14-18.

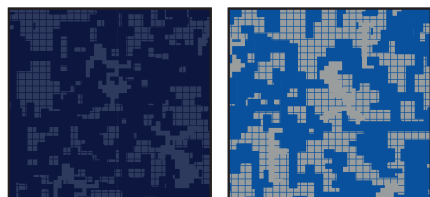
ARMOUR FUSE

					
WHITE	BLACK	MIDNIGHT NAVY	UNIVERSITY RED	ROYAL	FOREST GREEN
					
TEAM KELLY GREEN	MAROON	CARDINAL	DARK ORANGE	STEELTOWN GOLD	TEAM VEGAS GOLD
					
PURPLE	SILVER GRAY	GRAPHITE	CAROLINA BLUE	CLEVELAND BROWN	TEXAS ORANGE
					
COASTAL TEAL	PINK	POISON	CAPRI	TAXI	BASEBALL GRAY
					
OCEAN STORM	TENNESSEE ORANGE	GRAYSTONE	MIAMI TEAL	SEA GLASS	POWDER KEG BLUE
					
ELECTRIC BLUE	GOLD RUSH	TROPIC PINK			

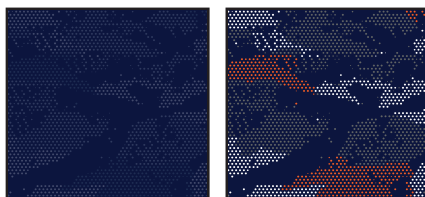
FLUORESCENTS
NOT CURRENTLY AVAILABLE IN TONAL
PRINTS OR ON GAMEDAY SELECT PRODUCT

			
YELLOW FLUORESCENT	PINK FLUORESCENT	GREEN FLUORESCENT	ORANGE FLUORESCENT

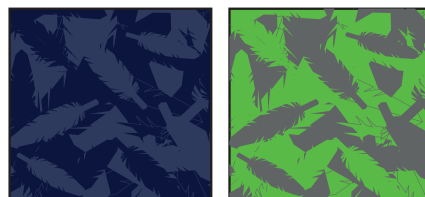
Prints available in all ArmourFuse colors. (Fluorescents not currently available in tonal prints)



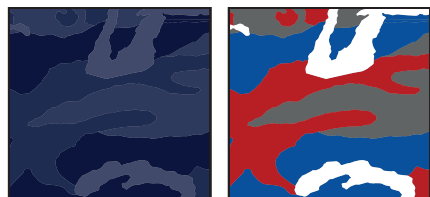
DIGITAL CAMO



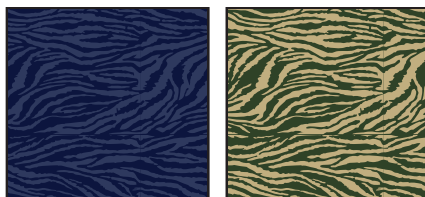
PIXEL CAMO



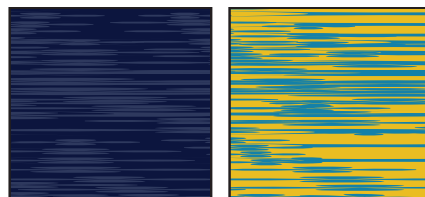
WINGS



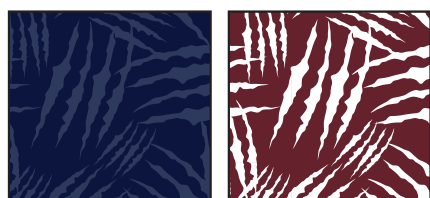
WOODLAND CAMO



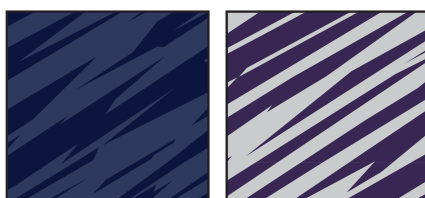
BENGAL



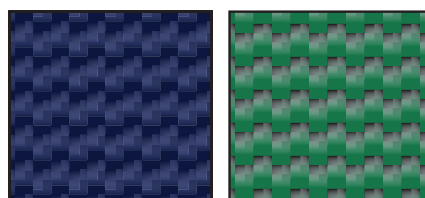
BLUR



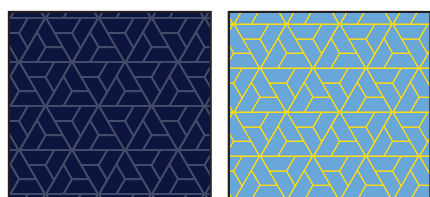
CLAW



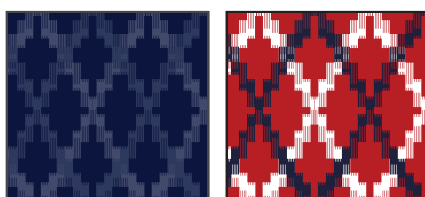
SPLINTER



CARBON WEAVE



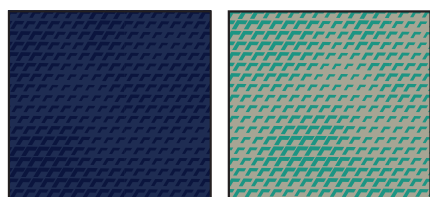
RAZOR



TOTEM

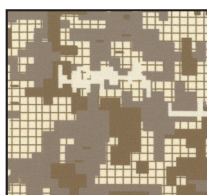


TREAD



SCALE

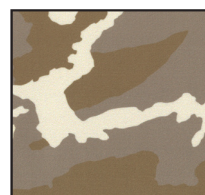
DESERT CAMO
LOCKED COLOR COMBINATIONS,
CANNOT BE ALTERED



DESERT
DIGITAL CAMO



DESERT
PIXEL CAMO



DESERT
WOODLAND CAMO

GAMEDAY SELECT OPTIONS

3/16" 1-COLOR PIPE



1/2" 3-COLOR BRAID



ANY COMBO
OF PIPE COLORS

INCLUDED PIPE/BRAID

1. Jersey Front

Around Neck

OR

Around Placket

OR

None

2. Jersey Sleeves

Sleeve Ends

OR

None

3. Pants

Down Side

OR

None

OPTIONAL PANT ALTERATIONS	LIST PRICE
Reduce Knicker Inseam 2" and Hem w/ Elastic	\$0.00
Increase Knicker Inseam 2" and Hem w/ Elastic	\$0.00
Increase Knicker Inseam 4" and Hem w/ Elastic*	\$15.00
Reduce Relaxed/Tapered Inseam 2" and Hem	\$0.00
Increase Relaxed/Tapered Inseam 2" and Hem	\$0.00
Increase Relaxed/Tapered Inseam 4" and Hem*	\$15.00

OPTIONAL ARMOURFUSE® TWILL (L X H)	LIST PRICE
Custom Team Name (Max. 14" x 4.25")	\$15.00
Custom Left Chest Team Logo (Max. 4" x 5")	\$15.00
Custom Sleeve Patch (Max. 4" x 4")	\$15.00
Custom Back Neck Patch (Max. 3" x 2")	\$15.00
Player Name (On Nameplate)	\$40.00
Player Name Directly on Jersey (No Nameplate)	\$30.00
Blank Nameplate	\$7.00
Add Tail to Script Font Team Name	\$15.00
Add Text to Script Font Tail	\$15.00

Note: Vector art must be provided for custom Armourfuse® Twill or additional artwork charges will apply

*Available on Men's styles only

FONT OPTIONS

BADGER

ABCDEFGHIJKLMNOPQRSTUVWXYZ
0123456789

COMBINE

ABCDEFGHIJKLMNOPQRSTUVWXYZ
0123456789

BEARCAT

ABCDEFGHIJKLMNOPQRSTUVWXYZ
0123456789

CADET

ABCDEFGHIJKLMNOPQRSTUVWXYZ
0123456789

HIGHLIGHT

ABCDEFGHIJKLMNOPQRSTUVWXYZ
0123456789

TERRAFONT

ABCDEFGHIJKLMNOPQRSTUVWXYZ
0123456789

PREMIER

ABCDEFGHIJKLMNOPQRSTUVWXYZ
0123456789

TIFFANY

ABCDEFGHIJKLMNOPQRSTUVWXYZ
0123456789

FULL BLOCK

ABCDEFGHIJKLMNOPQRSTUVWXYZ
0123456789

UNDENIABLE

ABCDEFGHIJKLMNOPQRSTUVWXYZ
0123456789

FALCON

ABCDEFGHIJKLMNOPQRSTUVWXYZ
0123456789

PLAIN BLOCK

ABCDEFGHIJKLMNOPQRSTUVWXYZ

ATHLETIC SCRIPT

ABCDEFGHIJKLMNOPQRSTUVWXYZ
abcdefghijklmnopqrstuvwxyz

CLASSIC SCRIPT

ABCDEFGHIJKLMNOPQRSTUVWXYZ
abcdefghijklmnopqrstuvwxyz

NOTE:

- Gameday Select Package Pricing now includes all of the above listed fonts
- Dropped fonts available for fill-in orders only

LETTERING ARRANGEMENTS

STRAIGHT

ARCHED

Athletic Script

BRIDGED

VERTICAL ARCH

Classic Script

EMBROIDERY

MASCOTS (STOCK ONLY)

	LIST PRICE
Mascot	\$11.00
Mascot with One Line	\$12.00
Mascot with Two Lines	\$13.00
American Flag	\$11.00
Small/Homeplate	\$6.00

DIGITIZING (STOCK AND ARMOURFUSE ONLY)

	LIST PRICE
Stock Designs and Lettering	\$180.00
Custom Logos	Call for Quote

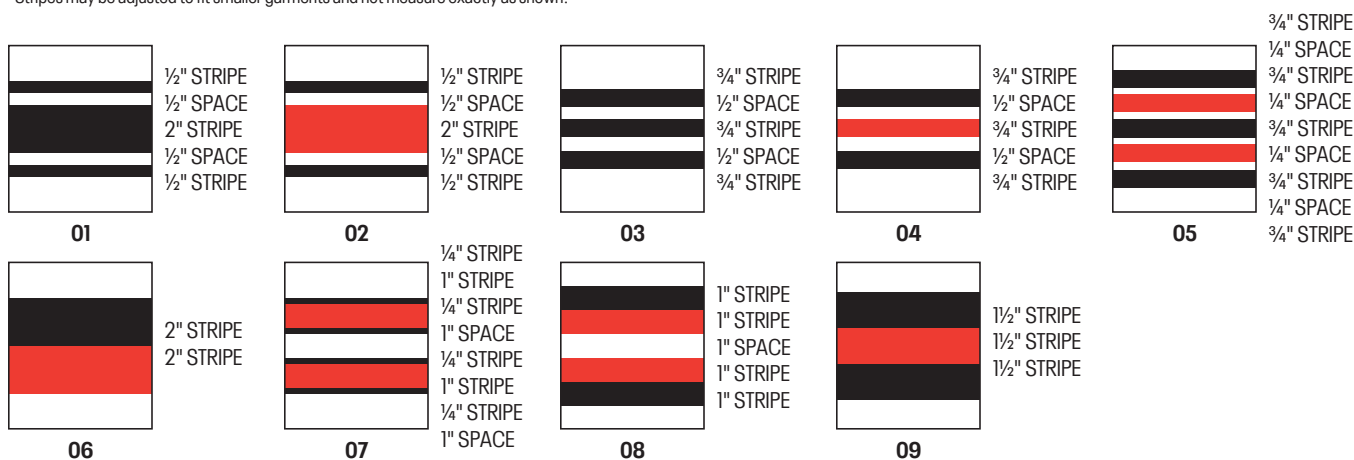
- Prices are based upon size of designs, not the number of colors. Prices are subject to change if design exceeds specifications.
- Dimensions are maximum space - unless specifically noted best judgement will be used.
- Letter styles are available horizontal or arched.
- No digitizing charge for team names.

- Flag size up to 2" by 3" (bigger area - call for quote)
- Minimum order charges apply for embroidery
- All designs require an additional digitizing charge, except:
 - 1) Digitized designs supplied on a disk
 - 2) Digitized design is a re-order of an existing design

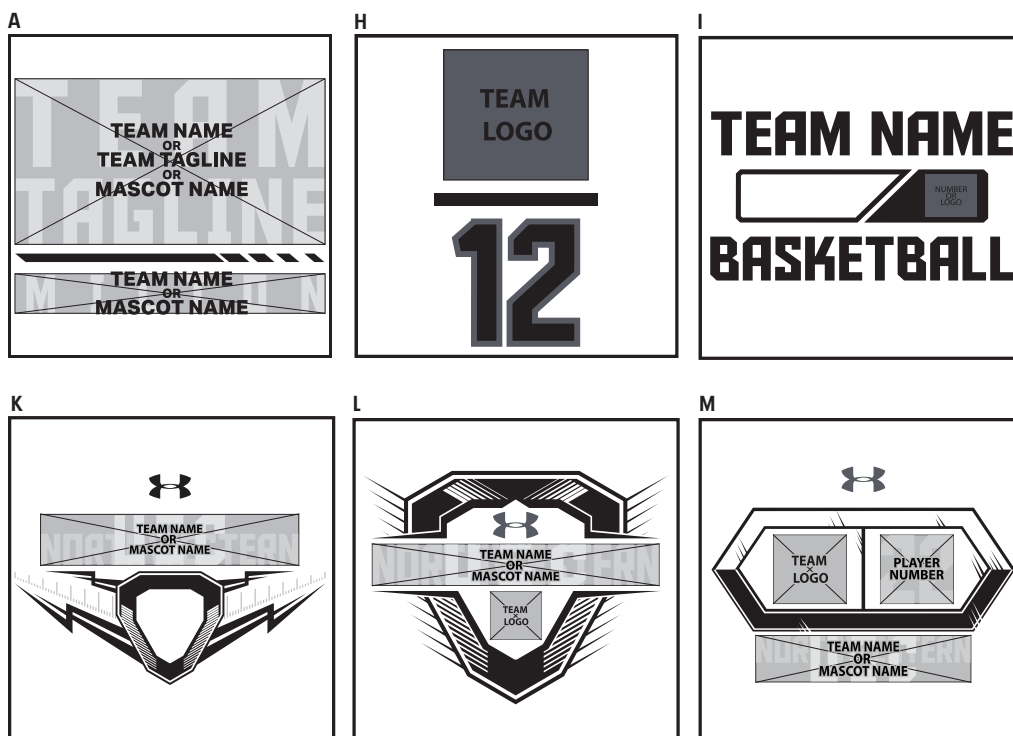
STANDARD SLEEVE PRINT STRIPES

*OPTIONS - Code numbers listed below stripe patterns

*Stripes may be adjusted to fit smaller garments and not measure exactly as shown.



ARMOURFUSE® GRAPHIC OPTIONS



UNIFORM CARE INSTRUCTIONS

To enhance the appearance and extend the life of your uniforms, Under Armour recommends that you follow these cleaning and storing procedures:

DO NOT DRY CLEAN

DO NOT WASH IN HOT WATER

DO NOT USE CHLORINE BLEACH

DO NOT USE FABRIC SOFTENER

DO NOT WASH WHITES AND COLORS TOGETHER

DO NOT OVERLOAD THE WASHING MACHINE

DO NOT MACHINE DRY ON HIGH HEAT

DO NOT LEAVE WET OR DAMP GARMENTS IN YOUR TRAVEL BAG, IN A PILE WITH OTHER CLOTHING OR IN WASHING MACHINE

- Pre wash uniform prior to use.
- Uniforms should always be laundered immediately after wearing. However, if this is not possible, rinse garments and hang individually on rust-proof hangers. (Moisture may cause color migration of acid dyes so we advise separating wet or damp uniforms.)
- Belts and any other contrasting color items should be washed separately from the garment.
- It is always advisable to test wash a single uniform according to directions before washing an entire load.
- Wash and rinse all garments in warm water (approx. 110°) with mild detergent. Remove promptly after wash cycle.
- For optimum results, hang garments (especially those with elastane) to dry. If you cannot hang dry, machine dry on the lowest setting. Turn jerseys inside out before machine drying. Remove items from dryer immediately upon completion of the cycle. (Excessive heat can cause fabric shrinkage, discoloration, and cracking and peeling of vinyl plastisol lettering inks.)
- Make sure uniforms are completely dry before storing. Store in a dry area to prevent mildew. Protect them from sunlight and fluorescent light to prevent yellowing.

PLEASE NOTE: Under Armour will not be responsible for uniforms that are damaged due to improper care and maintenance. Failure to follow our specified care instructions will void all guarantees.

UNIFORM FILL-IN LIFECYCLE

LAST SHOWN IN CATALOG	LAST FILL-IN SEASON	LAST FILL-IN SHIP
SP'19	SP'22	6/15/2022
FA'19	FA'22	12/15/2022
WI'19	WI'22	3/15/2023
SP'20	SP'23	6/15/2023
FA'20	FA'23	12/15/2023
WI'20	WI'23	3/15/2024
SP'21	SP'24	6/15/2024
FA'21	FA'24	12/15/2024
WI'21	WI'24	3/15/2025
SP'22	SP'25	6/15/2025
FA'22	FA'25	12/15/2025
WI'22	WI'25	3/15/2025


GAMEDAY SELECT TEAM UNIFORMS
 ORDERING INFORMATION AND CUSTOMER SERVICE:
 1-800-474-6118
www.uacustomuniforms.com


UA NEXT
 ORDERING INFORMATION AND CUSTOMER SERVICE:
 1-800-594-9082
www.underarmourteamuniforms.com


ARMOURFUSE™ TEAM UNIFORMS
 ORDERING INFORMATION AND CUSTOMER SERVICE:
 1-800-594-9082
www.underarmourteamuniforms.com


STOCK TEAM UNIFORMS
 ORDERING INFORMATION AND CUSTOMER SERVICE:
 1-800-594-9082
www.underarmourteamuniforms.com

ORDERING INFORMATION

Guarantee:

The materials and workmanship of our garments are guaranteed when given fair treatment and used under normal conditions.

Color Matching:

Scientifically, it is not possible to achieve a perfect color match from one dye lot to another. Therefore, we cannot guarantee a perfect match from order to order or from one fabric to another.

Color Abbreviation Key:

The following abbreviations may be used when ordering merchandise.

BG Baseball Gray	EB Electric Blue	PI Pink	SI Silver Grey
BK Black	GP Graphite	PK Powderkeg Blue	TA Taxi
BR Brown	KE Team Kelly Green	PO Poison	TE Teal
CA Cardinal	LG Steeltown Gold	PU Purple	TO Texas Orange
CB Carolina Blue	MA Maroon	RO Royal	TP Tropic Pink
CP Capri	NA Midnight Navy	RU Gold Rush	VG Team Vegas Gold
DG Forest Green	OR Dark Orange	SC University Red	WH White

Price Policy:

All catalog prices are list or suggested retail. Prices are subject to change without notice. Merchandise will be invoiced based on the prices in effect at the time the order is placed.

Terms:

Prices are FOB shipping point. Payment is due Net 30.

Minimum Order Charges:

A handling charge of \$10.00 will be added to orders of less than \$150.00 list.

Custom, GameDay Select and ArmourFuse fill-in minimum order quantity is 6 units per style and color.

A 100% surcharge will be applied to orders of 1-2 units, and a 50% surcharge for orders of 3-5 units.

Lettered Orders for COD Shipment:

A 50% deposit is required on all lettered orders calling for COD shipment.

Delivery:

Shipments will always be made by the fastest, least expensive means possible. The customer will assume any additional expense required to expedite delivery.

Order Cancellations:

Custom, GameDay Select and Armourfuse orders cannot be cancelled after artwork approval. Lettered garments cannot be cancelled after they have been decorated. Stock order cancellations must be received in a timely manner and must be approved by Under Armour.

Returns:

Claims must be reported to our office within 10 working days of merchandise receipt. Returns cannot be made after 30 days of the invoice date. All returns for plain merchandise must be clearly marked with an authorization number or label obtained from our office. All returns for lettered merchandise must be clearly marked "LETTERING." When requesting an authorization label, the following information is required: Reason for return, Invoice #, Style #, Color, Size/Quantity. An authorization label will then be sent to you to prepare the merchandise for return shipment. We reserve the right to repair, replace or issue credit for any merchandise returned. A 15% restocking fee and shipping charges will be charged for merchandise returned that is either not damaged or the damage is determined not to be our fault. All worn garments must be properly laundered prior to return or they will not be accepted.

All custom and custom-stock uniforms may not be returned under any circumstances if delivered properly.

Shortages:

All claims must be made within 10 days of the invoice date.

New Accounts:

All new accounts must be opened through your local sales representative. New accounts that do not have a Dunn and Bradstreet rating will be shipped COD until a credit line has been established.

Samples:

Samples will be entered and billed as a regular order. Samples cannot be returned without prior approval from our office.

Imprint Orders:

All imprint orders must be entered on the B2B site or emailed with detailed instructions on UA order forms. Imprint orders will not be taken by phone. Once garments have been lettered, the order cannot be cancelled or returned.

Under Armour will not be responsible for any items not checked for order accuracy or sizing before being sent to a printer / screener. We will not be responsible for shrinkage, defects, or damages caused during the imprinting of our garments by sources other than our own lettering department. Screenprinting sublimated uniforms can cause color migration. We do not recommend screenprinting on sublimated garments.

Photography is the property of Under Armour and is not to be used without written authorization.

[illegible]

COMPRESSION



Ultra-tight, second skin fit that keeps you locked in & makes you feel like you can do anything.

FITTED



A slimmer, athletic cut that allows total mobility but eliminates the bulk of extra fabric.

LOOSE



Fuller cut for complete comfort, total range of motion & greater breathability.

MEN'S

	US SIZE	CHEST (IN)	WAIST (IN)	HIP (IN)
SM	26-28	34-37	29-31	34-36
MD	30-32	37-41	31-34	36-39
LG	34-36	41-44	34-37	39-42
XL	38-40	44-48	37-41	42-46
2XL	42-44	48-52	41-45.5	46-50
3XL	46-48	52-56	45.5-50	50-54
4XL	50-52	56-60	50-54.5	54-58
5XL	54-56	60-64	54.5-59	58-62

HOW TO MEASURE



CHEST: Place the tape measure under your arms at the fullest part of your chest, wrap around your body until your fingers meet and mark the measurement

WAIST: Measure around your natural waistline – right above your hips. Be careful not to squeeze too tight to allow a little give.

HIPS: With your feet together, measure around the fullest part of your hips to ensure you'll have enough room to move comfortably.

BOYS

FITTED



A slimmer, athletic cut that allows total mobility but eliminates the bulk of extra fabric.

LOOSE



Fuller cut for complete comfort, total range of motion & greater breathability.

	US SIZE	CHEST (IN)	WAIST (IN)	HIP (IN)
YXS	7	25-26	23-24	26-27
YSM	8	26-27	24-25	27-28
YMD	10-12	27-29	25-27	28-31
YLG	14-16	29-32.5	27-30	31-34
YXL	18-20	32.5-35.5	30-33	34-37

HOW TO MEASURE



CHEST: Place the tape measure under your arms at the fullest part of your chest, wrap around your body until your fingers meet and mark the measurement

WAIST: Measure around your natural waistline – right above your hips. Be careful not to squeeze too tight to allow a little give.

HIPS: With your feet together, measure around the fullest part of your hips to ensure you'll have enough room to move comfortably.

WOMEN'S

COMPRESSION



Ultra-tight, second skin fit that keeps you locked in & makes you feel like you can do anything.

FITTED



Sits close to the skin for a streamlined fit without the squeeze of compression.

LOOSE



Fuller, more generous cut for enhanced range of motion & an effortlessly relaxed fit.

	US SIZE	CHEST (IN)	WAIST (IN)	HIP (IN)
XS	0-2	32.5-33.5	25.5-27	34.5-36
S	4-6	33.5-36	27-29	36-38
M	8-10	36-38	29-31	38-40
L	12-14	38-41	31-34	40-43
XL	16	41-44	34-37	43-46
2XL	18	44-47	37-40	46-49
3XL	20	47-50	40-43	49-52
4XL	22	50-53	43-46	52-55

HOW TO MEASURE



CHEST: Place the tape measure under your arms at the fullest part of your chest, wrap around your body until your fingers meet and mark the measurement

WAIST: Measure around your natural waistline – right above your hips. Be careful not to squeeze too tight to allow a little give.

HIPS: With your feet together, measure around the fullest part of your hips to ensure you'll have enough room to move comfortably.

GIRLS

FITTED



Sits close to the skin for a streamlined fit without the squeeze of compression.

LOOSE



Fuller, more generous cut for enhanced range of motion & an effortlessly relaxed fit.

	US SIZE	CHEST (IN)	WAIST (IN)	HIP (IN)
YXS	7	25-26.5	23-24	26-28
YSM	8	26.5-27.5	24-24.5	28-29
YMD	10-12	27.5-30.5	24.5-26.5	29-32.5
YLG	14-16	30.5-34	26.5-30.5	32.5-36.5
YXL	18-20	34-36	30.5-32.5	36.5-38.5

HOW TO MEASURE



CHEST: Place the tape measure under your arms at the fullest part of your chest, wrap around your body until your fingers meet and mark the measurement

WAIST: Measure around your natural waistline – right above your hips. Be careful not to squeeze too tight to allow a little give.

HIPS: With your feet together, measure around the fullest part of your hips to ensure you'll have enough room to move comfortably.

WEST

PAT BAUER
SR. REGIONAL MANAGER
410.299.3798
pbauer@underarmour.com
WA // OR // MT // ID // AK

JEFF UTTZ
626.484.3496
jeffu@underarmour.com
Southern & Central CA //
Southern NV // HI

MARC GUSTAFSON
303.828.7468
mgustafson@underarmour.com
UT // CO // WY //
Western KS // Western NE

MATT VALENTINE
415.307.1290
mvalentine@underarmour.com
Northern CA // NV

DAN LAABES
602.882.7241
dlaabes@underarmour.com
AZ // NM // West & South TX

GREG ROMINE
719.238.9244
gromine@underarmour.com
North & East TX // OK // Western AR

CENTRAL

BROCK PAALHAR
SR. REGIONAL MANAGER
573.808.1010
bpaalhar@underarmour.com
IA // MN // ND // SD

TONY DONOFRIO
419.356.9742
tonyd@underarmour.com
Northern IN // Northern OH //
MI // Western PA

FRANK WEBER
618.540.3955
fweber@underarmour.com
MO // Central & Eastern NE //
Southern IL // Eastern KS

JOHN WACHTEL
513.314.4024
jwachtel@underarmour.com
Southern IN // Southern OH //
Eastern TN // WV

MONTE GIBBS
662.801.3039
mgibbs@underarmour.com
Central & Western TN // Panhandle FL //
LA // AL // MS // Eastern AR

EAST

FRANK NUNAN
SR. REGIONAL MANAGER
484.576.9777
fnunan@underarmour.com
DE // NJ // Philadelphia area

DAN WILLIAMS
352.672.1676
dwilliams@underarmour.com
FL (except Panhandle)

ALEX BRUEGGEMANN
410.652.4337
abrueggemann@underarmour.com
GA // SC // NC

GARY POWERS
410.746.3790
gpowers@underarmour.com
MD // VA // Washington DC

BOB BARTLETT
315.380.6505
bobb@underarmour.com
NY // Lax Specialty

JAY KELLEHER
443.615.0462
jkelleher@underarmour.com
New England

COLLEGIATE

TOMMY AMICO
951.808.0367
tamico@underarmour.com
WEST

TODD LOCKLEAR
410.454.6572
tlocklear@underarmour.com
EAST

LICENSEES

FOUNDER SPORT GROUP
Stock & Armourfuse Uniforms
www.underarmourteamuniforms.com
800.594.9082
UASstatus@foundersportgroup.com

POWERS ATHLETIC
Custom Uniforms
www.uacustomuniforms.com
800.474.6118
customerservice@powersathletic.com



TEL: 1.888.828.1547 / B2B: ARMOURHOUSE.UNDERARMOUR.COM

COLLEGIATE

TEAMSPO RTS COLLEGIATE / TEAMSPO RTS.COLLEGIATE@UNDERARMOUR.COM

CENTRAL

TEAM SPORTS MW / TEAMSPORTSMW@UNDERARMOUR.COM

EAST

TEAM SPORTS SE / TEAMSPORTSSE@UNDERARMOUR.COM
TEAM SPORTS NE / TEAMSPORTSNE@UNDERARMOUR.COM

WEST

TEAM SPORTS WC / TEAMSPORTSWC@UNDERARMOUR.COM
TEAM SPORTS SW / TEAMSPORTSSW@UNDERARMOUR.COM

CONTACT CENTER

Corporate Headquarters
1020 Hull Street
Baltimore, MD 21230

Under Armour® Apparel Returns
1010 Swan Creek Drive
Baltimore, MD 21226

UA Footwear/Accessories Returns
2510 W. Walnut Avenue
Rialto, CA 92376

ALL TEAM SPORTS ORDERS AND QUESTIONS PLEASE USE THE FOLLOWING:

1.888.828.1547

CORPORATE OFFICE HOURS OF OPERATION

Monday through Friday, 8:30am – 7:00pm, EST.

UNDER ARMOUR® B2B – ONLINE ORDERING

armourhouse.underarmour.com

- 24/7 access to check inventory and place orders
- Ability to track orders and shipments
- Priority product allocation
- Faster processing time

UNDER ARMOUR® B2B – SUPPORT

B2B_support@underarmour.com

UNDER ARMOUR® RETURN POLICY

Under Armour® stands behind its gear and EXPECTS nothing less than perfection. If you have received a defective product, an incorrect size, or an incorrect order, please contact us immediately for a return authorization number so that we can quickly process your return and ensure your satisfaction.

ALL RETURNS MUST BE COMPLETED WITHIN 30 DAYS OF RECEIPT AND MUST BE IN REASONABLE CONDITION. ALL RETURNS MUST HAVE THE RA# CLEARLY MARKED ON THE CARTON. ALL RETURNS ARE SUBJECT TO A 15% RE-STOCKING FEE.

Should you need to return or exchange an item, you MUST include your RA#, a copy of your invoice, and an explanation in writing as to why you are returning the item. Send your return to the marked address on your pack list. If you are exchanging merchandise, you are responsible for the cost of returning the product. Original shipping costs are non-refundable. All returned merchandise must be received in new, resalable condition.

UNDER ARMOUR® CANCELLATION POLICY

Any request for cancellation of an order for UA products must be made, in writing, through the customer's UA Sales Representative. A request to cancel an order must be made more than 30 days before the customer's original desired ship date. All cancellations are subject to UA approval.

ALL PRICES SET FORTH HEREIN ARE SUBJECT TO CHANGE WITHOUT NOTICE.

© 2022 Under Armour®. All rights reserved. All trademarks, images, photographs, logos, and graphics are owned or controlled by Under Armour®.

Confidential and business proprietary information for internal Under Armour®, Inc. use only. Reproduction is strictly prohibited.

UNDER ARMOUR® PERFORMANCE
WINTER 2022