

The Asics logo is positioned in the top left corner of the image. It features the word "asics" in a white, lowercase, sans-serif font, preceded by the Asics "swoosh" symbol.

PAYTON CHADWICK

2019 Season Highlights:
NCAA Indoor and Outdoor Team Champions
1st SEC Indoor Championships
3rd NCAA Indoor Championships
2nd SEC Outdoor Championships
8th NCAA Outdoor Championships
PB's/Career Highlights:
60m Hurdles - 7.93 (2019)
100m Hurdles - 12.70 (2019)
2018 NCAA Indoor Champion

TEAM
SPRING SUMMER 2021

19  **TOYOTA** **USATF** OUTDOOR **CHAMPIONSHIPS**



UC

CONTENTS

7	TRACK & FIELD/CROSS COUNTRY
23	VOLLEYBALL
39	WRESTLING
57	TENNIS/FIELD HOCKEY
77	TRAINING
85	TRAVEL/SIDELINE
105	FOOTWEAR/ACCESSORIES



CLAYTON YOUNG
2019 Season Highlights:
1st Place NCAA Outdoor Championships - 10,000m
NCAA All-American at BYU
5th Place Philadelphia Rock 'n' Roll Half Marathon
PB's/Career Highlights:
5k - 13:31.79 (2019); 10k - 28:18.50 (2019)
½ Marathon - 1:03:40 (2019)

Ventilate Jacket (2011A785)
Road 5" Short (2011A769)



FABRIC TECHNOLOGY

ASICSMOTIONDRY

Technology is defined as the science of dealing with the properties, distribution and circulation of water. At ASICS, we apply this philosophy to the management and evaporation of sweat. The quick distribution of moisture away from the skin keeps the body dry, comfortable and better able to regulate temperature. Fabric absorbs sweat from the skin, then transfers it to the fabric surface where it can evaporate rapidly. Hydrology® fabrics are constructed to provide breathability and air circulation through the knit or woven structures.

QUICK DRY

Quick Dry is fabric technology that moves moisture away from the skin, allowing it to dry quickly and keep the wearer extremely comfortable in a wide variety of temperatures, activities, or conditions. The special 100% polyester blend offers the perfect balance of wind resistance, evaporation, breathability, insulation and ventilation. This soft, lightweight, and ultra-cool fabric also provides UV protection with a UPF rating of 20/30+, making it perfect for warm weather and intense workouts.

COMPRESSION

Nylon and spandex are combined to create a close-fitting, comfortable, moisture-wicking garment. The high tenacity stretch provides muscles with a firm compression that reduces muscle vibration, allowing you to increase leg strength and endurance. The compression fabrics' open knit construction creates an effective moisture transfer environment to keep you cooler, more energized, and able to perform at a maximum level for a longer duration. There is also a special anti-odor feature within the fabric.

CUSTOM SUBLIMATION

**RECEIVE YOUR CUSTOM
DESIGNED UNIFORMS IN
4 WEEKS FROM FINAL
ARTWORK APPROVAL!**

All sublimation orders must go through your ASICS rep.

Jose Candelario—West Coast (CA, NV, AZ, OR, WA, ID, MT, WY, UT, CO, AK, HI)
Jose.Candelario@asics.com
(714) 204-2552

Natalie Lowe—South West (TX, NM, OK, AR, LA)
Natalie.Lowe@asics.com
(940) 368-8023

Jason Armburger—North East (OH, WV, VA, NC, PA, DC, MD, DE, NJ, CT, NY, NH, ME)
Jason.Armburger@asics.com
(949) 521-1963

George Kline—South East (TN, MS, AL, GA, SC, FL)
George.Kline@asics.com
(610) 390-5146

Jocelyn Baughman—Central (ND, SD, NE, KS, MN, IA, MO, WI, IL, MI, IN, KY)
Jocelyn.Baughman@asics.com
(949) 295-7102

JORDAN BURROUGHS
Olympic Champion
4x World Champion
2x NCAA Champion



SIZING CHARTS & SCREENING INFORMATION

Follow your ink provider's recommendation based on the ink in use and always run a test before printing all garments.

SCREENING INSTRUCTIONS

FABRIC CONTENT	INK TYPES	CURING TIME	DRYING TEMP	COMMENTS
A Cotton	Plastisol or Waterbase	1 minute +/-	330-350º	
B Cotton / Fleece	Plastisol Inks	1 minute +/-	330-350º	
C Spandex	Plastisol with Expandesol Base	1 minute +/-	Below 330º	
D Polyester	Polyester Inks	1 minute +/-	290-300º	
E Nylon	Nylon Inks	Follow ink's instructions	Follow ink's instructions	
F Digital Media or Heat Transfer Only	N/A	N/A	N/A	
G Polyester Cool Zone™ Technology	Polyester Inks	1 minute +/-	330º	Double Index Printing is recommended

TEAM APPAREL SIZE CHART*

WOMEN'S	XX-SMALL	X-SMALL	SMALL	MEDIUM	LARGE	X-LARGE	XX-LARGE			
Chest	28 "-29"	30 "-31"	32 "-33"	34 "-35"	36 "-37"	38 "-39"	40 "-41"			
Waist	22 "-23"	24 "-25"	26 "-27"	28 "-29"	30 "-31"	32 "-33"	34 "-35"			
Hip	32 "-33"	34 "-35"	36 "-37"	38 "-39"	40 "-41"	42 "-43"	44 "-45"			
Inseam	27"	28 "-29"	29 "-30"	30 "-31"	31 "-32"	32 "-33"	33"			
Inseam Tall			34"	35"	36"					
High Hip		0-1	1-3	5-7	9-11	13				
MEN'S	XXX-SMALL	XX-SMALL	X-SMALL	SMALL	MEDIUM	LARGE	X-LARGE	XX-LARGE	XXX-LARGE	XXXX-LARGE
Chest	31"-32"	33"-34"	35"-36"	37"-38"	39"-40"	41"-43"	44"-46"	47"-49"	50"-52"	53"-55"
Waist	23"-24"	25"-26"	27"-28"	29"-30"	31"-32"	33"-35"	36"-38"	39"-41"	42"-44"	45"-47"
Hip	32"-33"	34"-35"	36"-37"	38"-39"	40"-41"	42"-44"	45"-47"	48"-50"	51"-53"	54"-56"
Inseam	28"	28"	29"-30"	30"-31"	31"-32"	32"-33"	33"-34"	34"	34"	35"
JUNIOR'S					MEDIUM	LARGE	X-LARGE			
Chest					28"-30"	30"-32"	32"-34"			
Waist					23"-25"	25"-27"	27"-29"			
Hip					29"-31"	31"-33"	33"-35"			
Inseam					27"	28.5"	30"			

WRESTLING SINGLET'S SIZE CHART*

	XXXX-SMALL	XXX-SMALL	XX-SMALL	X-SMALL	SMALL	MEDIUM	LARGE	X-LARGE	XX-LARGE
Chest	19"-20.5"	21"-22.5"	23"-24.5"	25"-26.5"	27"-28.5"	29"-30.5"	31"-33"	34"-36"	37"-39"
Waist	17"-18"	19"-20"	21"-22"	22.5"-23.5"	24"-25.5"	26"-28"	29"-31"	32"-34"	35"-36"
Hip	19"-20.5"	21"-22.5"	23"-24.5"	25"-26.5"	27"-28.5"	29"-30.5"	31"-33"	34"-36"	37"-39"
Inseam	2.75"	4"	5.25"	6.25"	7.25"	8.25"	9"	9.75"	10.75"
Weight	40-55 lbs.	55-75 lbs.	75-95 lbs.	95-115 lbs.	115-135 lbs.	135-160 lbs.	160-190 lbs.	190-220 lbs.	Over 220 lbs.

BIKINI SIZE CHART*

	X-SMALL	SMALL	MEDIUM	LARGE	X-LARGE
Bust	32"-33"	34"-35"	36"-37"	38"-39"	40"-41"
Waist	24"-25"	26"-27"	28"-29"	30"-31"	32"-33"
Hip	34"-35"	36"-37"	38"-39"	40"-41"	42"-43"
Bra-Cup	32-34 AA/A	32-34 A/B	34-36 B/C	36 C/D	38 D

* Measurements refer to body size, not garment size.

TRACK & FIELD/
CROSS COUNTRY



CANDICE HILL
5th Place 60m USATF Indoor Championships
New Strong Campaign
PB's/Career Highlights:
100m - 10.98 (2015)
200m - 22.43 (2015)

SUBLIMATION

For more information on how to order template or custom designs, please contact your local Team Sales Rep.



TFS600 M'S SHORT SLEEVE \$80.00 F0004
TFS601 M'S REGULAR SHORT \$70.00 F0053

SIZES: 3XS, 2XS, XS, S, M, L, XL, 2XL
4 WEEK TURNAROUND TIME FROM FINAL ARTWORK APPROVAL
FABRIC: 86% POLYESTER / 14% SPANDEX
FEATURES

- Quick dry
- Flat seam stitching
- Drawcord at waist
- Fully sublimated
- 8" Inseam

COLORS

- Asics Colors

TFS400 M'S XC SINGLET \$70.00 F0053
TFS401 M'S XC REGULAR SHORT \$75.00 F0573
TFS402 M'S XC SPLIT SHORT \$75.00 F0573

SIZES: 3XS, 2XS, XS, S, M, L, XL, 2XL
4 WEEK TURNAROUND TIME FROM FINAL ARTWORK APPROVAL
FABRIC: 100% POLYESTER KNIT
FEATURES

- Racer back cut
- Lightweight
- Fully sublimated
- 2" Inseam

COLORS

- Asics Colors



TFS500 W'S SHIMMEL \$75.00 F0573
TFS501 W'S REGULAR SHORT \$65.00 F0523

SIZES: 3XS, 2XS, XS, S, M, L, XL, 2XL
4 WEEK TURNAROUND TIME FROM FINAL ARTWORK APPROVAL
FABRIC: 86% POLYESTER / 14% SPANDEX
FEATURES

- Compression fit
- Flat seam stitching
- Binding at the neck and arm opening
- Lightweight

COLORS

- Asics Colors

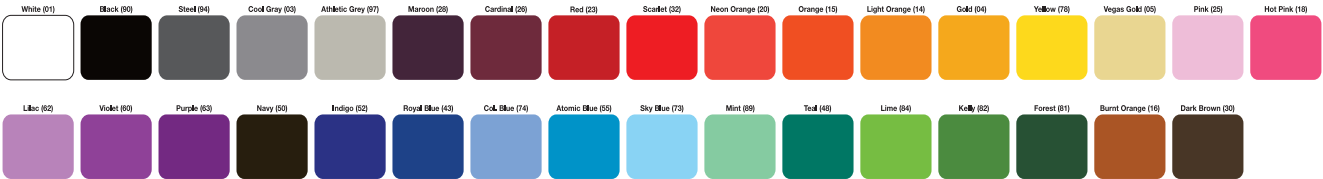
TFS300 W'S XC SINGLET \$70.00 F0053
TFS301 W'S XC REGULAR SHORT \$75.00 F0573
TFS302 W'S XC SPLIT SHORT \$75.00 F0573

SIZES: 3XS, 2XS, XS, S, M, L, XL, 2XL
4 WEEK TURNAROUND TIME FROM FINAL ARTWORK APPROVAL
FABRIC: 100% POLYESTER KNIT / 100% POLYESTER BRIEF
FEATURES

- Draw cord at waist
- Tricot brief
- Lightweight
- Fully sublimated
- 2" Inseam

COLORS

- Asics Colors



NEW

2091A173 TRACK SINGLET

U.S. SUGGESTED RETAIL: \$35.00 F0571

SIZES: XS, S, M, L, XL, 2XL, 3XL

AVAILABLE: 12/1/2020

FABRIC: 100% POLYESTER

FEATURES

- Slim Fit
- Fabric provides moisture wicking and quick dry for comfort during competition
- Updated racerback silhouette

COLORS

0101	White/White
2301	Red/White
4301	Royal/White
5001	Navy/White
9001	Black/White
9401	Steel Grey/White



TF3085 RIVAL II™ SINGLET

U.S. SUGGESTED RETAIL: \$22.00 F0011

SIZES: 4XS, 3XS, 2XS, XS, M, L, XL, 2XL, 3XL

AVAILABLE: AT ONCE

FABRIC: 100% POLYESTER

FEATURES

- Lightweight/breathable
- Binding at neckline and armholes
- Screening instruction D

COLORS

01	White
23	Red
43	Royal
50	Navy
90	Black
94	Steel Grey



TF2931 RIVAL II™ 1/2 SPLIT SHORT
TF3086 RIVAL II™ SHORT

U.S. SUGGESTED RETAIL: \$28.00 F0041

\$28.00 F0041

TF2931 SIZES: XS, S, M, L, XL, 2XL TF3086 SIZES: 4XS, 3XS, 2XS, XS, M, L, XL, 2XL, 3XL

AVAILABLE: AT ONCE

FABRIC: 100% POLYESTER
100% POLYESTER BRIEF

FEATURES

- Lightweight/breathable
- Flat braided drawcord at waist
- Split inseam: 2.5", Regular inseam: 4"
- Screening instruction D

COLORS

23	Red
43	Royal
50	Navy
90	Black
94	Steel Grey



TF3377 TEAM SWEEP SINGLET

U.S. SUGGESTED RETAIL: \$30.00 F0051

SIZES: S, M, L, XL, 2XL, 3XL

AVAILABLE: AT ONCE

FABRIC: 100% POLYESTER

FEATURES

- Moisture management
- Lightweight
- Binding at neckline and armholes
- Contrast white panel down the back
- Screening instruction G

COLORS

0101	White/White
2301	Red/White
4301	Royal/White
5001	Navy/White
9001	Black/White
2601	Cardinal/White
1501	Orange/White
6301	Purple/White
8101	Forest/White
0401	Gold/White
9401	Steel Grey/White



TEAM BANK RESERVED

TF2351 BREAK THROUGH™ 1/2 SPLIT SHORT
TF2350 BREAK THROUGH™ SHORT

U.S. SUGGESTED RETAIL: \$32.00 F0061

\$32.00 F0061

TF2351 SIZES: S, M, L, XL, 2XL TF2350 SIZES: S, M, L, XL, 2XL, 3XL

AVAILABLE: AT ONCE

FABRIC: 100% POLYESTER KNIT
100% POLYESTER BRIEF

FEATURES

- Moisture management
- Lightweight
- Elastic encased drawcord at waistband
- Split inseam: 2.5", Regular inseam: 5"
- Screening instruction G

COLORS

0101	White/White
0401	Gold/White
1501	Orange/White
2301	Red/White
2601	Cardinal/White
4301	Royal/White
5001	Navy/White
6301	Purple/White
8101	Forest/White
9001	Black/White



TEAM BANK RESERVED

TF2678 ENDURO™ SHORT SLEEVE

U.S. SUGGESTED RETAIL: **\$42.00** F0012

SIZES: XS, S, M, L, XL, 2XL

AVAILABLE: AT ONCE

FABRIC: 92% POLYESTER / 8% SPANDEX

FEATURES

- Flatlock stitching
- Contrast panels
- Compression fit with maximum freedom of motion
- Screening instruction E

COLORS

2301	Red/White
2601	Cardinal/White
4301	Royal/White
5001	Navy/White
6301	Purple/White
8101	Forest/White
9001	Black/White
9401	Steel Grey/White



TF2679 ENDURO™ SHORT

U.S. SUGGESTED RETAIL: **\$38.00** F0091

SIZES: XS, S, M, L, XL, 2XL

AVAILABLE: AT ONCE

FABRIC: 92% POLYESTER / 8% SPANDEX

FEATURES

- Flatlock stitching
- Encased elastic waistband
- Inseam: 9"
- Can be used as a uniform or as a base layer
- Screening instruction E

COLORS

2301	Red/White
2601	Cardinal/White
4301	Royal/White
5001	Navy/White
6301	Purple/White
8101	Forest/White
9001	Black/White
9401	Steel Grey/White
2323	Red/Red
4343	Royal/Royal
5050	Navy/Navy
9090	Black/Black



TEAM BANK RESERVED

TF925 TEAM MEDLEY™ TIGHT

U.S. SUGGESTED RETAIL: **\$38.00** F0091

SIZES: 3XS, 2XS, XS, S, M, L, XL, 2XL

AVAILABLE: AT ONCE

FABRIC: 82% NLLON / 18% SPANDEX

FEATURES

- Hydrology® fabric
- Elastic waist with flat braided drawcord
- Flat lock seams
- Gripper elastic at ankle
- Anti-odor
- Screening instruction c

COLORS

23	Red
43	Royal
50	Navy
90	Black



TEAM BANK RESERVED

TF1285 APTITUDE™ 2 RUN PANT

U.S. SUGGESTED RETAIL: **\$50.00** F0052

SIZES: S, M, L, XL, 2XL

AVAILABLE: AT ONCE

FABRIC: 87% POLYESTER / 13% SPANDEX FRENCH TERRY

FEATURES

- ASICS® Motion Dry™ Fabric
- Hand pockets
- Tapered leg with zipper
- Asics® logo on thigh
- Gripper elastic at leg opening
- Screening instruction D

COLORS

90	Black
----	-------



TEAM BANK RESERVED

NEW

2092A111 TRACK SINGLET

U.S. SUGGESTED RETAIL: \$35.00 F0571

SIZES: XS, S, M, L, XL, 2XL

AVAILABLE: 12/1/2020

FABRIC: 100% POLYESTER

FEATURES

- Slim Fit
- Fabric provides moisture wicking and quick dry for comfort during competition
- Updated racerback silhouette

COLORS

0101	White/White
2301	Red/White
4301	Royal/White
5001	Navy/White
9001	Black/White
9401	Steel Grey/White



TF2934 RIVAL II™ SINGLET

U.S. SUGGESTED RETAIL: \$22.00 F0011

SIZES: XS, S, M, L, XL, 2XL

AVAILABLE: AT ONCE

FABRIC: 100% POLYESTER

FEATURES

- Lightweight/breathable
- Binding at neckline and armholes
- Screening instruction D

COLORS

01	White
23	Red
43	Royal
50	Navy
90	Black
94	Steel Grey



TF2936 RIVAL II™ 1/2 SPLIT SHORT
TF2935 RIVAL II™ SHORT

U.S. SUGGESTED RETAIL: \$28.00 F0041

\$28.00 F0041

TF2936 SIZES: XS, S, M, L, XL TF2935 SIZES: XS, S, M, L, XL, 2XL

AVAILABLE: AT ONCE

FABRIC: 100% POLYESTER
100% POLYESTER BRIEF

FEATURES

- Lightweight/breathable
- Flat braided drawcord at waist
- Split inseam: 2.5", Regular inseam: 4"
- Screening instruction D

COLORS

23	Red
43	Royal
50	Navy
90	Black
94	Steel Grey



TF3378 TEAM SWEEP SINGLET

U.S. SUGGESTED RETAIL: \$30.00 F0051

SIZES: XS, S, M, L, XL, 2XL

AVAILABLE: AT ONCE

FABRIC: 100% POLYESTER

FEATURES

- Moisture management
- Lightweight
- Binding at neckline and armholes
- Contrast white panel down the back
- Screening instruction G

COLORS

0101	White/White
2301	Red/White
4301	Royal/White
5001	Navy/White
9001	Black/White
2601	Cardinal/White
1501	Orange/White
6301	Purple/White
8101	Forest/White
0401	Gold/White
9401	Steel Grey/White



TEAM BANK RESERVED

TF2354 BREAK THROUGH™ 1/2 SPLIT SHORT
TF2353 BREAK THROUGH™ SHORT

U.S. SUGGESTED RETAIL: \$32.00 F0061

\$32.00 F0061

SIZES: XS, S, M, L, XL, 2XL

AVAILABLE: AT ONCE

FABRIC: 100% POLYESTER KNIT
100% POLYESTER BRIEF

FEATURES

- Moisture management
- Lightweight
- Elastic encased drawcord at waistband
- Split inseam: 2", Regular inseam: 4"
- Screening instruction G

COLORS

0101	White/White
0401	Gold/White
1501	Orange/White
2301	Red/White
2601	Cardinal/White
4301	Royal/White
5001	Navy/White
6301	Purple/White
8101	Forest/White
9001	Black/White



TEAM BANK RESERVED

TF2680 CHASER™ SHIMMEL

U.S. SUGGESTED RETAIL: \$40.00 F0002

SIZES: XS, S, M, L, XL, 2XL

AVAILABLE: AT ONCE

FABRIC: 90% POLYESTER / 10% SPANDEX

FEATURES

- Flat seam stitching
- Racerback
- White contrast mesh paneling
- Princess seams for a flattering look
- Screening instruction D

COLORS

0101	White/White
2301	Red/White
2601	Cardinal/White
4301	Royal/White
5001	Navy/White
6301	Purple/White
8101	Forest/White
9001	Black/White
9401	Steel Grey/White

TEAM BANK RESERVED



TF2681 CHASER™ SHORT

U.S. SUGGESTED RETAIL: \$38.00 F0091

SIZES: 2XS, XS, S, M, L, XL

AVAILABLE: AT ONCE

FABRIC: 92% POLYESTER / 8% SPANDEX

FEATURES

- Flat seam stitching
- Inseam: 3"
- Silicone gripper at leg opening
- White contrast panels
- Screening instruction D

COLORS

2301	Red/White
2601	Cardinal/White
4301	Royal/White
5001	Navy/White
6301	Purple/White
8101	Forest/White
9001	Black/White
9401	Steel Grey/White

TEAM BANK RESERVED



TF2683 CHASER™ BRIEF

U.S. SUGGESTED RETAIL: \$28.00 F0041

SIZES: 2XS, XS, S, M, L, XL

AVAILABLE: AT ONCE

FABRIC: 92% POLYESTER / 8% SPANDEX

FEATURES

- Flat seam stitching
- Contrast panels
- Screening instruction D

COLORS

2301	Red/White
4301	Royal/White
5001	Navy/White
9001	Black/White
5050	Navy/Navy
9090	Black/Black

TEAM BANK RESERVED



TF1286 APTITUDE™ 2 RUN PANT

U.S. SUGGESTED RETAIL: \$50.00 F0052

SIZES: XS, S, M, L, XL

AVAILABLE: AT ONCE

FABRIC: 87% POLYESTER / 13% SPANDEX FRENCH TERRY

FEATURES

- ASICS® Motion Dry™ Fabric
- Hand pockets
- Tapered leg with zipper
- Asics® logo on thigh
- Gripper elastic at leg opening
- Screening instruction D

COLORS

50	Navy
90	Black

TEAM BANK RESERVED



1093A028 JAVELIN PRO 2

U.S. SUGGESTED RETAIL: \$150.00 F0528

- SIZES: 6-13
- AVAILABLE: AT ONCE
- FEATURES
- Support and durability
 - Functional for elite throwers
 - Asymmetrical design
 - Reinforced toe cap
 - Double strap hook-and-loop closure

COLORS

701	Sunrise Red/Black
-----	-------------------



701

1093A044 HIGH JUMP PRO (R)
1093A043 HIGH JUMP PRO (L)

U.S. SUGGESTED RETAIL: \$120.00 F0066
\$120.00 F0066

- SIZES: 6-13
- AVAILABLE: AT ONCE
- FEATURES
- Left and right foot take offs
 - Revamped fit
 - Lightweight, breathable, & supportive
 - Formed with an adaptable fit

COLORS

701	Sunrise Red/Black
-----	-------------------



701

1093A032 LONG JUMP PRO 2

U.S. SUGGESTED RETAIL: \$120.00 F0066

- SIZES: 6-13, 14
- AVAILABLE: AT ONCE
- FEATURES
- Delivers increased traction on approach & greater propulsion at take-off
 - Supportive synthetic leather upper
 - Pebax nylon plate is reinforced around spike sock

COLORS

701	Sunrise Red/Black
-----	-------------------



701

1093A041 TRIPLE JUMP PRO 2

U.S. SUGGESTED RETAIL: \$120.00 F0066

- SIZES: 6-13, 14
- AVAILABLE: AT ONCE
- FEATURES
- Lightweight flexibility & supportive fit
 - Upper has been engineered with a mesh application that stretches with the foot's natural motion

COLORS

701	Sunrise Red/Black
-----	-------------------



701

1093A046 THROW PRO 2

U.S. SUGGESTED RETAIL: \$110.00 F0506

- SIZES: 5-13, 14, 15, 16
- AVAILABLE: AT ONCE
- FEATURES
- Designed for shot put, discus, & hammer throwers
 - Improved sole design and rubber compound
 - Implements a larger midfoot strap to help increase stability

COLORS

701	Sunrise Red/Black
-----	-------------------



701

1091A019 HYPER LD 6

U.S. SUGGESTED RETAIL: **\$65.00** F5753

SIZES: 4-13, 14, 15 **WEIGHT:** 5.68 oz.

AVAILABLE: 12/1/2020

FEATURES

- Long distance race and utility shoe
- Generous midsole for enhanced cushioning
- New upper features thin seamless overlays
- Lightweight and improved fit
- Removable spikes

COLORS

402	Digital Aqua/Black
-----	--------------------



402

1091A018 HYPER MD 7

U.S. SUGGESTED RETAIL: **\$65.00** F5753

SIZES: 1-13, 14, 15 **WEIGHT:** 5.58 oz.

AVAILABLE: 12/1/2020

FEATURES

- New seamless upper features mesh material that combines with thin TPU overlays-provides sock like fit
- EVA Midsole-sponge-like material with shock absorbing qualities that complements bounce back
- EVA Sockliner-Removable sockliner provides cushioning performance
- Removable spikes

COLORS

402	Digital Aqua/Black
-----	--------------------



402

1091A015 HYPERSPRINT 7

U.S. SUGGESTED RETAIL: **\$65.00** F5753

SIZES: 4-13, 14, 15 **WEIGHT:** 5.47 oz.

AVAILABLE: 12/1/2020

FEATURES

- EVA Sockliner-Removable sockliner provides cushioning performance
- Lightweight Pebax Spike Plate with a 5-spike configuration
- Synthetic upper provides secure support
- Removable spikes

COLORS

402	Digital Aqua/Black
-----	--------------------



402

NEW

1093A031 SONICSPRINT ELITE 2

U.S. SUGGESTED RETAIL: **\$150.00** F0528

SIZES: 7-12, 13

AVAILABLE: 12/1/2020

FEATURES

- EVA Sockliner-Removable sockliner provides cushioning performance
- Lightweight Pebax Spike Plate with a 5-spike configuration
- Synthetic upper provides secure support
- Removable spikes

COLORS

402	Digital Aqua/Black
-----	--------------------



402

NEW

1093A042 GUNLAP 2

U.S. SUGGESTED RETAIL: **\$100.00** F0055

SIZES: 4-13, 14

AVAILABLE: 12/1/2020

FEATURES

- EVA Sockliner-Removable sockliner provides cushioning performance
- Lightweight Pebax Spike Plate with a 5-spike configuration
- Removable spikes

COLORS

102	White/Black
-----	-------------



102

1091A033 HYPER THROW

U.S. SUGGESTED RETAIL: **\$65.00** F5753

SIZES: 5-12, 13, 14

AVAILABLE: AT ONCE

FEATURES

- Strap in and let it fly with the ASICS Hyper Throw 3
- Designed to excel with rotational and/or glide throwing techniques, this entry-level throwing shoe is perfect for beginners, with a midfoot strap for enhanced lockdown and a pivot point in the forefoot to allow for easy rotation
- A breathable mesh and synthetic upper will keep you comfortable as you take on the competition

COLORS

001	Black/White
-----	-------------



001

VOLLEYBALL



SUBLIMATION

For more information on how to order template or custom designs, please contact your local Team Sales Rep.



SUBLIMATED

2052A052	W'S MESH BACK VB LS	\$95.00	F0574
2054A029	JR MESH BACK VB LS	\$85.00	F0524
2052A051	W'S MESH BACK VB SS	\$85.00	F0524
2054A027	JR MESH BACK VB SS	\$75.00	F0573

ADULT SIZES: XS, M, L, XL, 2XL, 3XL JUNIOR SIZES: YS, YM, YL, YXL

4 WEEK TURNAROUND TIME FROM FINAL ARTWORK APPROVAL

FABRIC: 90% POLYESTER / 10% LYCRA

FEATURES

- Lightweight fabric provides superior wicking fast dry times
- Stretch provides full range of motion
- Entire mesh back panel provides superior breathability and trendy aesthetic

COLORS

- Asics Colors

2052A050	W'S VB LONG SLEEVE	\$75.00	F0573
2054A028	JR VB LONG SLEEVE	\$65.00	F0523
2052A049	W'S VB SHORT SLEEVE	\$65.00	F0523
2054A026	JR VB SHORT SLEEVE	\$55.00	F0572

ADULT SIZES: XS, M, L, XL, 2XL, 3XL JUNIOR SIZES: YS, YM, YL, YXL

4 WEEK TURNAROUND TIME FROM FINAL ARTWORK APPROVAL

FABRIC: 90% POLYESTER / 10% LYCRA

FEATURES

- Lightweight fabric provides superior wicking fast dry times
- Stretch provides full range of motion
- Mesh panel provides breathability

COLORS

- Asics Colors

2054A010	JR. VB LONG SLEEVE	\$70.00	F0053
2054A011	JR. VB SHORT SLEEVE	\$60.00	F0003

SIZES: YS, YM, YL, YXL

4 WEEK TURNAROUND TIME FROM FINAL ARTWORK APPROVAL

FABRIC: 90% POLYESTER / 10% LYCRA

FEATURES

- Lightweight fabric provides superior wicking fast dry times
- Stretch provides full range of motion
- Entire mesh back panel provides superior breathability and trendy aesthetic

COLORS

- Asics Colors

VBS400	M'S VB LONG SLEEVE	\$90.00	F0054
VBS401	M'S VB SHORT SLEEVE	\$80.00	F0004
2051A032	M'S VB SLEEVELESS	\$75.00	F0573

SIZES: XS, S, M, L, XL, 2XL, 3XL

4 WEEK TURNAROUND TIME FROM FINAL ARTWORK APPROVAL

FABRIC: 90% POLYESTER / 10% SPANDEX

FEATURES

- Lightweight
- Breathable
- Fully Sublimated

COLORS

- Asics Colors



2052A050

2052A049



2052A052

2052A051

2051A032



2052A116 SPIN SERVE JERSEY LONG SLEEVE
2054A019 JR SPIN SERVE JERSEY LONG SLEEVE

U.S. SUGGESTED RETAIL: \$45.00 F0522
\$40.00 F0002

ADULT SIZES: XS, S, M, L, XL, 2XL JUNIOR SIZES: YS, YM, YL, YXL

AVAILABLE: AT ONCE

FABRIC: 88% POLYESTER / 12% SPANDEX

FEATURES

- Lightweight fabric provides superior wicking fast dry times
- Stretch provides full range of motion

COLORS		JR
90	Black/White	✓
01	White/Black	✓
94	Steel Grey/White	✓
23	Red/White	✓
43	Royal/White	✓
50	Navy/White	✓

TEAM BANK RESERVED



2052A115 SPIN SERVE JERSEY SHORT SLEEVE
2054A016 JR SPIN SERVE JERSEY SHORT SLEEVE

U.S. SUGGESTED RETAIL: \$35.00 F0571
\$30.00 F0051

ADULT SIZES: XS, S, M, L, XL, 2XL JUNIOR SIZES: YS, YM, YL, YXL

AVAILABLE: 7/1/2019

FABRIC: 88% POLYESTER / 12% SPANDEX

FEATURES

- Lightweight fabric provides superior wicking fast dry times
- Stretch provides full range of motion

COLORS		JR
90	Black/White	✓
01	White/Black	✓
94	Steel Grey/White	✓
23	Red/White	✓
43	Royal/White	✓
50	Navy/White	✓

TEAM BANK RESERVED



BT3279 DECOY LONG SLEEVE
BT3280 JR DECOY LONG SLEEVE

U.S. SUGGESTED RETAIL: \$50.00 F0052
\$48.00 F0042

ADULT SIZES: XS, S, M, L, XL, 2XL JUNIOR SIZES: YM, YL, YXL

AVAILABLE: AT ONCE

FABRIC: 89% POLYESTER / 11% SPANDEX

FEATURES

- Lightweight
- V-neck collar
- Contrast heather grey panels
- Flatlock seam construction
- Anti-odor
- Screening Instruction C

COLORS		JR
0199	White/Heather Grey	✓
2399	Red/Heather Grey	✓
4399	Royal/Heather Grey	✓
5099	Navy/Heather Grey	✓
9099	Black/Heather Grey	✓
9499	Steel Grey/Heather Grey	✓



BT3266 DECOY SHORT SLEEVE
BT3267 JR DECOY SHORT SLEEVE

U.S. SUGGESTED RETAIL: \$48.00 F0042
\$46.00 F0032

ADULT SIZES: XS, S, M, L, XL, 2XL JUNIOR SIZES: YM, YL, YXL

AVAILABLE: AT ONCE

FABRIC: 89% POLYESTER / 11% SPANDEX

FEATURES

- Lightweight
- V-neck collar
- Contrast heather grey panels
- Flatlock seam construction
- Anti-odor
- Screening Instruction C

COLORS		JR
0199	White/Heather Grey	✓
2399	Red/Heather Grey	✓
4399	Royal/Heather Grey	✓
5099	Navy/Heather Grey	✓
9099	Black/Heather Grey	✓
9499	Steel Grey/Heather Grey	✓



BT2510 VOLLEYCROSS™ LONG SLEEVE
BT2511 JR VOLLEYCROSS™ LONG SLEEVE

U.S. SUGGESTED RETAIL: **\$42.00** F0012
\$40.00 F0002

ADULT SIZES: XS, S, M, L, XL, 2XL JUNIOR SIZES: YM, YL, YXL
AVAILABLE: AT ONCE
FABRIC: 100% POLYESTER INTERLOCK

- FEATURES
- Lightweight
 - Contrast Stitching
 - Moisture Management
 - Libero Legal
 - Screening Instruction D

COLORS	JR
0194 White/Steel Grey	✓
1594 Orange/Steel Grey	
2394 Red/Steel Grey	
2694 Cardinal/Steel Grey	
4394 Royal/Steel Grey	
5094 Navy/Steel Grey	✓
6394 Purple/Steel Grey	
8194 Forest/Steel Grey	
9094 Black/Steel Grey	✓



2052A117 WARM-UP LONG SLEEVE

U.S. SUGGESTED RETAIL: **\$35.00** F0571

SIZES: XS, S, M, L, XL, 2XL
AVAILABLE: 7/1/2019
FABRIC: 88% POLYESTER / 12% SPANDEX

- FEATURES
- Soft hand fabric with exaggerated fit for comfort when warming up
 - Crew neck silhouette

COLORS	
90 Black	
01 White	
94 Steel Grey	
99 Steel Grey Heather	



TEAM BANK RESERVED



BT3067 2" VOLLEYBALL SHORT

U.S. SUGGESTED RETAIL: **\$30.00** F0051

SIZES: 2XS, XS, S, M, L, XL, 2XL
AVAILABLE: AT ONCE
FABRIC: 79% POLYESTER / 21% SPANDEX

- FEATURES
- Asics® Motion Dry™ fabric
 - Flat seam stitching added for durability
 - Smooth wide waistband makes for a flattering fit
 - COOLMAX4 gusset liner
 - Back longer length for coverage
 - Inseam: 2"
 - Screening instruction C

COLORS	
9018 Black/Pink Glo	
9490 Steel Grey/Black	
5043 Navy/Royal	



2052A046 3" VOLLEYBALL SHORT

U.S. SUGGESTED RETAIL: **\$30.00** F0051

SIZES: 2XS, XS, S, M, L, XL, 2XL
AVAILABLE: AT ONCE
FABRIC: 92% NYLON / 8% SPANDEX

- FEATURES
- Higher rise waistband provides locked-in fit for distraction free movement
 - Inseam: 3"

COLORS	
090 Team Black/White	
081 Team Forest Green	
028 Team Maroon	
050 Team Navy	
066 Team Neon Orange	
018 Team Pink Glo	
023 Team Red	
043 Team Royal	
094 Team Steel Grey	



2052A053 4" VOLLEYBALL SHORT
2054A020 JR 4" VOLLEYBALL SHORT

U.S. SUGGESTED RETAIL: **\$30.00** F0051
\$25.00 F0521

ADULT SIZES: 2XS, XS, S, M, L, XL, 2XL JUNIOR SIZES: YS, YM, YL, YXL
AVAILABLE: AT ONCE
FABRIC: 92% TACTEL NYLON / 8% SPANDEX

- FEATURES
- Poly/Span fabric provides locked in feel with perfect amount of stretch
 - New high rise waistband ensures a perfect fit
 - 4" inseam

COLORS	JR
90 Black	✓
94 Steel Grey	
23 Red	✓
43 Royal	✓
50 Navy	✓

TEAM BANK RESERVED



BT1728 TYSON™ SLEEVELESS

U.S. SUGGESTED RETAIL: \$42.00 F0012

ADULT SIZES: S, M, L, XL, 2XL

AVAILABLE: AT ONCE

FABRIC: 100% POLYESTER

FEATURES

- Lightweight
- Superior moisture management
- Screening instruction G

COLORS

2301	Red/White
4301	Royal/White
0190	White/Black
5001	Navy/White
9001	Black/White
43	Royal
50	Navy
90	Black

TEAM BANK RESERVED



2081A017 STOCK MMA SHORT

U.S. SUGGESTED RETAIL: \$50.00 F0052

SIZES: XS, S, M, L, XL, 2XL

AVAILABLE: AT ONCE

FABRIC: 86% POLYESTER / 14% SPANDEX

FEATURES

- 4 Way stretch-woven fabric provides perfect mix of flexibility and durability
- Flatlock waistband and internal drawcord for perfect fit
- Minimal stitching and seaming provides chafe-free experience for wearer
- 9" Inseam

COLORS

091	Black
051	Navy
024	Red
044	Royal
095	Steel Grey
100	White

TEAM BANK RESERVED



BT2685 X-OVER™ SHORT

\$32.00 F0061

ADULT SIZES: S, M, L, XL, 2XL

AVAILABLE: AT ONCE

FABRIC: 100% POLYESTER

FEATURES

- Unlined
- White contrast panels
- Elastic waistband with drawcord
- Inseam: 8"
- Screening instruction D

COLORS

0101	White/White
2301	Red/White
4301	Royal/White
5001	Navy/White
9001	Black/White
9401	Steel Grey/White



3053A060 GEL-CONFORM II VB KNEEPAD
3054A002 JR. GEL-CONFORM II VB KNEEPAD

U.S. SUGGESTED RETAIL: **\$25.00** F0521
\$22.00 F0011

ADULT SIZES: S/M, L/XL JUNIOR SIZES: ONE SIZE

AVAILABLE: AT ONCE

- FEATURES
- All new gel foam padding provides superior resiliency similar to mid sole of a shoe
 - Neoprene front of knee provides durability and perfect amount of "slide-ability"
 - Circular knit back of knee provides locked in fit and complete range of motion
 - Top sleeve grip for enhanced fit
 - Embroidered stitch hex for enhanced design
 - Soft French Terry lining on knee for added comfort

COLORS		JR
90	Black	✓
01	White	✓

TEAM BANK RESERVED



ZD0925 ACE-LOW PROFILE VB KNEEPAD
ZD0926 JR. ACE-LOW PROFILE VB KNEEPAD

U.S. SUGGESTED RETAIL: **\$22.00** F0011
\$20.00 F0001

ADULT SIZES: S/M, L/XL JUNIOR SIZES: ONE SIZE

AVAILABLE: AT ONCE

- FEATURES
- 6" sleeve
 - Dual Density Padding
 - Anti-microbial
 - Anti-oder
 - Sold in pairs

COLORS		JR
90	Black	✓
01	White	✓



3053A059 GEL-RALLY VB KNEEPAD
3054A004 JR. GEL-RALLY VB KNEEPAD

U.S. SUGGESTED RETAIL: **\$20.00** F0001
\$18.00 F0090

ADULT SIZES: S/M, L/XL JUNIOR SIZES: ONE SIZE

AVAILABLE: AT ONCE

- FEATURES
- All new gel foam padding provides superior resiliency similar to mid sole of a shoe
 - All over knit tube

COLORS		JR
90	Black	✓
01	White	✓

TEAM BANK RESERVED



1052A024 WOMEN'S SKY ELITE FF

U.S. SUGGESTED RETAIL: **\$130.00** F0517

SIZES: 6-12, 13, 14

AVAILABLE: AT ONCE

- FEATURES
- FlyteFoam™ midsole technology
 - Twisstrust system
 - NC Rubber® outsole

COLORS	
102	White/Pure Silver



102

1052A023 WOMEN'S SKY ELITE FF MT

U.S. SUGGESTED RETAIL: **\$140.00** F0077

SIZES: 6-12, 13, 14

AVAILABLE: AT ONCE

- FEATURES
- FlyteFoam™ midsole technology
 - Twisstrust system
 - NC Rubber® outsole

COLORS	
102	White/Pure Silver



102

1051A031 MEN'S SKY ELITE

U.S. SUGGESTED RETAIL: **\$130.00** F0517

SIZES: 6-13, 14, 15, 16

AVAILABLE: AT ONCE

- FEATURES
- FlyteFoam™ midsole technology
 - Twisstrust system
 - NC Rubber® outsole

COLORS	
001	Black/White



001

1051A032 MEN'S SKY ELITE FF MT

U.S. SUGGESTED RETAIL: **\$140.00** F0077

SIZES: 6-13, 14, 15, 16

AVAILABLE: AT ONCE

- FEATURES
- FlyteFoam™ midsole technology
 - Twisstrust system
 - NC Rubber® outsole

COLORS	
001	Black/White



001

1052A033 WOMEN'S NETBURNER BALLISTIC FF 2

U.S. SUGGESTED RETAIL: \$115.00 F5236

SIZES: 6-12, 13
AVAILABLE: 100: AT ONCE, 102: 1/1/2021

- FEATURES**
- Flextion grooves
 - Twisstruss system
 - Split PU covered vamp
 - Ortholite sockliner
 - Flytefoam propel
 - Rearfoot gel

COLORS

100	White/Black
102	White/Rose Gold



1051A041 MEN'S NETBURNER BALLISTIC FF 2

U.S. SUGGESTED RETAIL: \$115.00 F5236

SIZES: 6-13, 14, 15
AVAILABLE: 100: AT ONCE, 003: 1/1/2021

- FEATURES**
- Flextion grooves
 - Twisstruss system
 - Split PU covered vamp
 - Ortholite sockliner
 - Flytefoam propel
 - Rearfoot gel

COLORS

100	White/Gunmetal
003	Black/White



1052A034 WOMEN'S NETBURNER BALLISTIC FF MT 2

U.S. SUGGESTED RETAIL: \$120.00 F0066

SIZES: 6-12, 13
AVAILABLE: 100: AT ONCE, 102: 1/1/2021

- FEATURES**
- Flextion grooves
 - Twisstruss system
 - Split PU covered vamp
 - Ortholite sockliner
 - Flytefoam propel
 - Rearfoot gel

COLORS

100	White/Black
102	White/Rose Gold



1051A042 MEN'S NETBURNER BALLISTIC FF MT 2

U.S. SUGGESTED RETAIL: \$120.00 F0066

SIZES: 6-13, 14, 15
AVAILABLE: 100: AT ONCE, 003: 1/1/2021

- FEATURES**
- Flextion grooves
 - Twisstruss system
 - Split PU covered vamp
 - Ortholite sockliner
 - Flytefoam propel
 - Rearfoot gel

COLORS

100	White/Gunmetal
003	Black/White



1072A035 WOMEN'S GEL-TACTIC

U.S. SUGGESTED RETAIL: **\$100.00** F0055

SIZES: 5-12, 13, 14

AVAILABLE: AT ONCE

FEATURES

- FlyteFoam™ midsole technology
- Trusstic System® technology
- Seamless construction

COLORS

001	Black/Silver
103	White/Aquarium

TEAM BANK RESERVED



1071A031 MEN'S GEL-TACTIC

U.S. SUGGESTED RETAIL: **\$100.00** F0055

SIZES: 6-13, 14, 15

AVAILABLE: AT ONCE

FEATURES

- FlyteFoam™ midsole technology
- Trusstic System® technology
- Seamless construction

COLORS

003	Black/White
-----	-------------

TEAM BANK RESERVED



NEW

1072A056 WOMEN'S GEL-ROCKET 10

U.S. SUGGESTED RETAIL: **\$70.00** F0583

SIZES: 5-12, 13, 14

AVAILABLE: 1/1/2021

FEATURES

- Forefoot GEL® technology cushioning systems (COURT)
- Trusstic System® technology

COLORS

001	Black/White
100	White/Classic Red
101	White/Peacoat
103	White/Sour Yuzu

TEAM BANK RESERVED



NEW

1071A054 MEN'S GEL-ROCKET 10

U.S. SUGGESTED RETAIL: **\$70.00** F0583

SIZES: 7-13, 14, 15

AVAILABLE: 1/1/2021

FEATURES

- Forefoot GEL® technology cushioning systems (COURT)
- Trusstic System® technology

COLORS

002	Black/Pure Gold
103	White/Pure Gold

TEAM BANK RESERVED



1072A055 WOMEN'S UPCOURT™ 4

U.S. SUGGESTED RETAIL: \$55.00 F5203

SIZES: 5-12, 13, 14
AVAILABLE: 001, 100: AT ONCE, 103: 1/1/2021

- FEATURES
- California slip lasting
 - EVA sockliner
 - EVA foam
 - Rearfoot gel
 - Removable sockliner

COLORS

001	Black/White
100	White/Black
103	White/Champagne



1071A053 MEN'S UPCOURT™ 4

U.S. SUGGESTED RETAIL: \$55.00 F5203

SIZES: 6-13, 14, 15
AVAILABLE: 001: AT ONCE, 102: 1/1/2021

- FEATURES
- California slip lasting
 - EVA sockliner
 - EVA foam
 - Rearfoot gel
 - Removable sockliner

COLORS

001	Black/Pure Silver
102	White/Black



1074A027 KIDS UPCOURT 4 GS STANDARD GS

U.S. SUGGESTED RETAIL: \$50.00 F0572

SIZES: 1-7
AVAILABLE: AT ONCE

- FEATURES
- Gum rubber outsole

COLORS

001	Black/Pure Silver
100	White/Black



WRESTLING



KYLE DAKE
2018 & 2019 Senior World champion
Four-time NCAA champion
First to win four NCAA Div. I titles
in four different weight classes

SUBLIMATION

For more information on how to order template or custom designs, please contact your local Team Sales Rep.

JORDAN BURROUGHS
Olympic Champion
4x World Champion
2x NCAA Champion



2081A020 COMPRESSION ½ SLEEVE \$70.00 F0053
2084A002 JR. COMPRESSION ½ SLEEVE \$60.00 F0003

ADULT SIZES: XS, S, M, L, XL, 2XL, 3XL JUNIOR SIZES: YS, YM, YL, YXL
4 WEEK TURNAROUND TIME FROM FINAL ARTWORK APPROVAL
FABRIC: 86% POLYESTER / 14% SPANDEX

- FEATURES**
- Compression, locked in fit
 - 3" drop tail for regulation standard
 - Extended arm length detail for distraction free fit
- COLORS**
- Asics Colors

2081A018 MMA SHORT (SUBLIMATED) \$70.00 F0053
2081A024 JR. MMA SHORT \$65.00 F0523

ADULT SIZES: 2XS, XS, S, M, L, XL, 2XL, 3XL JUNIOR SIZES: YS, YM, YL, YXL
4 WEEK TURNAROUND TIME FROM FINAL ARTWORK APPROVAL
FABRIC: 86% POLYESTER / 14% SPANDEX

- FEATURES**
- 4-Way stretch woven fabric provides perfect mix of flexibility and durability
 - Flatlock waistband and internal drawcord for perfect fit
 - Minimal stitching and seaming to eliminate chafing
 - 9" inseam
- COLORS**
- Asics Colors

2081A023 WRESTLING SHORT \$65.00 F0523

SIZES: XS, S, M, L, XL, 2XL, 3XL
4 WEEK TURNAROUND TIME FROM FINAL ARTWORK APPROVAL
FABRIC: 100% POLYESTER

- FEATURES**
- Woven fabric with mechanical stretch provides durability and free range of movement while competing
 - 8.5" Inseam
- COLORS**
- Asics Colors

JTS400 WRESTLING SINGLET \$95.00 F0574

SIZES: 4XS, 3XS, 2XS, XS, S, M, L, XL, 2XL
4 WEEK TURNAROUND TIME FROM FINAL ARTWORK APPROVAL
FABRIC: 86% POLYESTER / 14% SPANDEX

- FEATURES**
- Quick dry
 - Flatlock stitching
 - Binding at neck and arm opening
 - Fully sublimated

- COLORS**
- Asics Colors



NEW

2082A021 WOMEN'S 2 PIECE WRESTLING TOP

U.S. SUGGESTED RETAIL: \$65.00 F0523

SIZES: XS, S, M, L, XL, 2XL

AVAILABLE: 1/1/2021

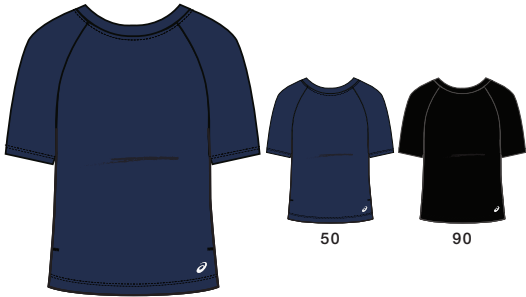
FABRIC: 82% NYLON / 18% SPANDEX

FEATURES

- Compression fit with extra stretch for flexibility!
- Extended sleeve length reduces rolling and reduces distractions while competing
- Mesh side insert with flatlock stitching- for breathability and distraction free comfort
- 3" Drop hem is regulation and fit for her!

COLORS

50	Navy
90	Black



NEW

2082A020 WOMEN'S 2 PIECE WRESTLING SHORT

U.S. SUGGESTED RETAIL: \$50.00 F0052

SIZES: XS, S, M, L, XL, 2XL

AVAILABLE: 1/1/2021

FABRIC: 86% POLYESTER / 14% SPANDEX

FEATURES

- Stretch woven fabric for elevated support and feel
- Contrast stretch side panel for added visual and allows flexibility during movement
- Wider waistband for locked in fit. Internal elastic draw-cord for adjustability
- Back yoke stretch panel for better shaping and fit for her
- Inseam: 5.5"

COLORS

50	Navy
90	Black



JT857 WOMEN'S SOLID MODIFIED SINGLET

U.S. SUGGESTED RETAIL: \$36.00 F0081

SIZES: XS, S, M, L, XL, 2XL

AVAILABLE: AT ONCE

FABRIC: 82% NYLON / 18% SPANDEX

FEATURES

- Flat seam stitching
- Gripper elastic leg opening
- Women's specific fit
- Inseam: 7"
- Screening instruction C

COLORS

23	Red
43	Royal
50	Navy
81	Forest
90	Black

TEAM BANK RESERVED



JT3066 WOMEN'S SNAP DOWN™ WRESTLING SINGLET

U.S. SUGGESTED RETAIL: \$46.00 F0032

SIZES: XS, S, M, L, XL, 2XL

AVAILABLE: AT ONCE

FABRIC: 87% POLYESTER / 13% SPANDEX
100% POLYESTER MESH

FEATURES

- Asics® Motion Dry™ Fabric
- Contrast flatlock stitching for durability
- Racerback design with contrast mesh back panel for breathability
- Contrast binding at neck and arm hole opening
- Elastic at leg opening
- Inseam: 7"
- Screening instruction C

COLORS

2301	Red/White
4301	Royal/White
5001	Navy/White
9001	Black/White



2081A028 WRESTLING PRACTICE SHORT
2084A005 JR. WRESTLING PRACTICE SHORT

U.S. SUGGESTED RETAIL: \$40.00 F0002
\$35.00 F0571

ADULT SIZES: XS, S, M, L, XL, 2XL, 3XL JUNIOR SIZES: YS, YM, YL, YXL
AVAILABLE: 7/1/2019
FABRIC: 100% POLYESTER

- FEATURES
- Woven fabric provides durability when competing
 - Flatlock waistband and internal drawcord
 - 8.5" inseam

COLORS		JR
9001	Black/White	✓
9401	Steel Grey/White	✓
2301	Red/White	
4301	Royal/White	
5001	Navy/White	✓

TEAM BANK RESERVED



2081A017 MMA SHORT

U.S. SUGGESTED RETAIL: \$50.00 F0052

SIZES: XS, S, M, L, XL, 2XL
AVAILABLE: AT ONCE
FABRIC: 86% POLYESTER / 14% SPANDEX

- FEATURES
- 4 Way stretch-woven fabric provides perfect mix of flexibility and durability
 - Flatlock waistband and internal drawcord for perfect fit
 - Minimal stitching and seaming provides chafe-free experience for wearer
 - 9" Inseam

COLORS	
091	Black
051	Navy
024	Red
044	Royal
095	Steel Grey
100	White

TEAM BANK RESERVED



2081A019 COMPRESSION 1/2 SLEEVE
2084A003 JR. COMPRESSION 1/2 SLEEVE

U.S. SUGGESTED RETAIL: \$35.00 F0571
\$30.00 F0051

ADULT SIZES: 2XS, XS, S, M, L, XL, 2XL JUNIOR SIZES: YS, YM, YL, YXL
AVAILABLE: AT ONCE, JUNIOR: 7/1/2019
FABRIC: 86% POLYESTER / 14% SPANDEX

- FEATURES
- Compression, locked in fit
 - 3" drop tail for regulation standard
 - Extended arm length detail for distraction free fit

COLORS	
091	Black ✓
051	Navy ✓
024	Red
044	Royal
095	Steel Grey ✓
100	White

TEAM BANK RESERVED



2081A029 COMPRESSION TIGHT

U.S. SUGGESTED RETAIL: \$35.00 F0571

SIZES: XS, S, M, L, XL, 2XL, 3XL
AVAILABLE: 7/1/2019
FABRIC: 88% POLYESTER / 12% SPANDEX
FEATURES

- Poly/Span fabric provides locked in feel with perfect amount of stretch
- New 2" jaquard waistband provides perfect, locked in fit
- Mesh panel ventilation behind knee for increased breathability
- Minimal stitching for distraction free wearing experience

COLORS	
9090	Black/Black
9490	Steel Grey/Black



2081A026 COMPRESSION SHORT

U.S. SUGGESTED RETAIL: \$30.00 F0051

SIZES: XS, S, M, L, XL, 2XL, 3XL
AVAILABLE: 7/1/2019
FABRIC: 88% POLYESTER / 12% SPANDEX

- FEATURES
- Poly/Span fabric provides locked in feel with perfect amount of stretch
 - New 2" jaquard waistband provides perfect, locked in fit
 - 9" inseam
 - Minimal stitching for distraction free wearing experience

COLORS	
90	Black
94	Steel Grey



JT3064 LEGIT™ WRESTLING SINGLET

U.S. SUGGESTED RETAIL: \$48.00 F0042

SIZES: 4XS, 3XS, 2XS, XS, M, L, XL, 2XL, 3XL

AVAILABLE: AT ONCE

FABRIC: 87% POLYESTER / 13% SPANDEX

FEATURES

- Asics Motion Dry™ Fabric
- Flatlock stitching
- Anti-odor
- Contrast binding at neck and arm hole opening
- Contrasting side panels
- Elastic leg opening
- Inseam: 7.5"
- Screening instruction C

COLORS

2390	Red/Black
4390	Royal/Black
5090	Navy/Black
9094	Black/Steel Grey



JT1155 SNAP DOWN™ WRESTLING SINGLET

U.S. SUGGESTED RETAIL: \$48.00 F0042

SIZES: 4XS, 3XS, 2XS, XS, M, L, XL, 2XL, 3XL

AVAILABLE: AT ONCE

FABRIC: 84% POLYESTER / 16% SPANDEX

FEATURES

- Flatlock stitching
- Rib at leg opening
- Anti-odor
- Inseam: 8"
- Screening instruction C

COLORS

2301	Red/White
2601	Cardinal/White
4301	Royal/White
5001	Navy/White
8101	Forest/White
9001	Black/White



JT200 SOLID MODIFIED SINGLET

U.S. SUGGESTED RETAIL: \$36.00 F0081

SIZES: 4XS, 3XS, 2XS, XS, M, L, XL, 2XL, 3XL

AVAILABLE: AT ONCE

FABRIC: 82% NYLON / 18% SPANDEX

FEATURES

- Gripper at leg openings
- Flatlock stitching
- 8" Inseam
- Screening instruction C

COLORS

23	Red
43	Royal
50	Navy
90	Black



ZW354 UNRESTRAINED™ EARGUARD

U.S. SUGGESTED RETAIL: \$32.00 F0061

SIZES: ONE SIZE

AVAILABLE: AT ONCE

FEATURES

- New sublimated design gives a unique look that hooks back in with our footwear
- Dual-density padding features KinetoFoam6 for custom fit and protection
- Ear shell is designed to provide ample space without adding bulk
- Unique strap design
- US patent no. D500,179

COLORS

2343	Faded Glory
------	-------------



ZW352 UNRESTRAINED™

U.S. SUGGESTED RETAIL: \$28.00 F0041

SIZES: ONE SIZE

AVAILABLE: AT ONCE

FEATURES

- Dual-density padding features KinetoFoam6® for custom fit and protection
- Unique strap design
- US patent no. D500,179
- Ear shell is designed to provide ample space without adding bulk

COLORS

90	Black
23	Red
43	Royal*

*Royal is \$32.00



ZW900 GEL® HEADGEAR
ZW802 JR. GEL® HEADGEAR

U.S. SUGGESTED RETAIL: \$22.00 F0011

\$20.00 F0001

SIZES: ONE SIZE

AVAILABLE: AT ONCE

FEATURES

- GEL® Cushioning System
- US Patent Nos. D384, 774 and 5,685,021

COLORS

	JR
90	Black ✓
23	Red ✓
43	Royal



ZW351 OLD SCHOOL™ HEADGEAR
ZW451 JR. OLD SCHOOL™ HEADGEAR

U.S. SUGGESTED RETAIL: \$20.00 F0001

\$18.00 F0090

SIZES: ONE SIZE

AVAILABLE: AT ONCE

FEATURES

- Adjustable straps
- GEL® Cushioning System

COLORS

	JR
90	Black ✓
23	Red ✓
43	Royal ✓



ZW3072 SNAP DOWN™ EARGUARD

U.S. SUGGESTED RETAIL: \$32.00 S0061

SIZES: ONE SIZE

AVAILABLE: AT ONCE

FEATURES

- 4 strap foam design
- Fully adjustable
- Foam molds to reduce friction with a comfortable fit
- Lightweight
- Chin cup included
- 2 slot strap holder

COLORS

01	White
50	Navy
23	Red
43	Royal
90	Black
1890	Pink Glo/Black

TEAM BANK RESERVED (01 & 90 ONLY)



ZD0153 TAKE DOWN

U.S. SUGGESTED RETAIL: \$10.00 F0050

SIZES: XS/S, M/L

AVAILABLE: AT ONCE

FABRIC: 100% NEOPRENE

FEATURES

- Wide, cushioned pu foam pad
- Neoprene at front pad
- 9.5" Sleeve

COLORS

90	Black
----	-------



ZD712 GEL® REVERSIBLE
ZD711 REVERSIBLE

U.S. SUGGESTED RETAIL: \$18.00 F0090

\$16.00 F0080

ZD712 SIZES: S, M, L, XL ZD711 SIZES: XS, S, M, L, XL SOLD INDIVIDUALLY

AVAILABLE: AT ONCE

FABRIC: GEL CUSHIONING SYSTEM/ KINETO FOAM

FEATURES

- Reversible
- Gel® technology cushioning system (ZD712 only)
- Latex free
- 11.5" Sleeve

COLORS

2343	Red/Royal
0190	White/Black

TEAM BANK RESERVED



ZD600 SHOOTING SLEEVE

U.S. SUGGESTED RETAIL: \$17.00 F0580

SIZES: XS, S, M, L, XL SOLD INDIVIDUALLY

AVAILABLE: AT ONCE

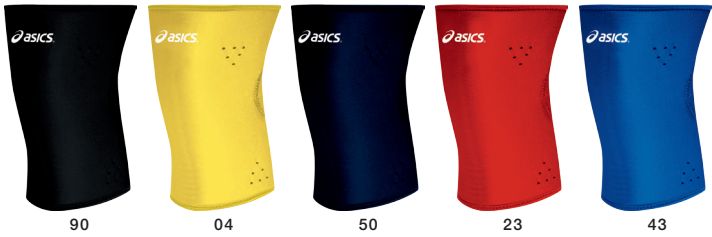
FABRIC: LYCRA COVERED NEOPRENE/ LATEX FREE

FEATURES

- 7.5" Sleeve
- Lycra3 covered neoprene
- Latex free

COLORS

90	Black
04	Gold
50	Navy
23	Red
43	Royal



ZD361 UNRESTRAINED™ KNEEPAD

U.S. SUGGESTED RETAIL: \$18.00 F0090

SIZES: S/M, L/XL SOLD INDIVIDUALLY

AVAILABLE: AT ONCE

FABRIC: KINETO FOAM/ LATEX FREE

FEATURES

- Kinetof foam6®
- Latex free
- 9" sleeve

COLORS

90	Black
23	Red
43	Royal



ZD2002 GEL® II KNEE SLEEVE

U.S. SUGGESTED RETAIL: \$20.00 F0001

SIZES: S, M, L, XL SOLD INDIVIDUALLY

AVAILABLE: AT ONCE

FABRIC: LYCRA COVERED NEOPRENE/ LATEX FREE

FEATURES

- GEL® Technology inserted in the impact area for added protection to the patella
- Neoprene construction and flatlock design add lateral stability
- Made with Kinetof Foam6® which is a open cell padding that helps dissipate heat by working in conjunction with EVA
- 7" sleeve

COLORS

43	Royal
90	Black
23	Red



ZD2001 CONQUEST™ KNEE SLEEVE

U.S. SUGGESTED RETAIL: \$22.00 F0011

SIZES: S, M, L, XL SOLD INDIVIDUALLY

AVAILABLE: AT ONCE

FABRIC: LYCRA COVERED NEOPRENE/ LATEX FREE

FEATURES

- Made with Kinetof Foam6® which is a open cell padding that helps dissipate heat by working in conjunction with EVA
- Neoprene construction and flatlock design adds stability laterally and protects from the impact to the knee
- Mesh back panel allows for greater flexibility and helps with moisture management
- 8" sleeve

COLORS

43	Royal
90	Black
23	Red



ZD360 SUPER SLEEVE™

U.S. SUGGESTED RETAIL: \$22.00 F0011

SIZES: XS, S, M, L, XL SOLD INDIVIDUALLY

AVAILABLE: AT ONCE

FABRIC: DUAL DENSTIY PAD/ KINETO FOAM/ LATEX FREE

FEATURES

- Dual-density pad
- Kinetof Foam6®
- Teardrop shape
- Latex free
- 11.5" sleeve

COLORS

90	Black
23	Red
43	Royal



TEAM BANK RESERVED

ZD701 GEL® LYCRA® SLEEVE
ZD700 LYCRA® SLEEVE

U.S. SUGGESTED RETAIL: \$35.00 F0571

\$29.00 F0541

SIZES: XS, S, M, L, XL SOLD INDIVIDUALLY

AVAILABLE: AT ONCE

FABRIC: KINETO FOAM/ LATEX FREE

FEATURES

- Kinetof Foam6®
- Latex free
- GEL® Technology Cushioning System
- 12" sleeve

COLORS

90	Black
----	-------



1081A018 DAN GABLE EVO 2

U.S. SUGGESTED RETAIL: \$160.00 F0088

- SIZES:** 6-13, 14, 15
- AVAILABLE:** AT ONCE
- FEATURES**
- Integrated Lace Garage™ technology
 - MONO-SOCK® technology fit system
 - Super Suede Escaine2

COLORS

004	Black/Pure Gold
-----	-----------------



004

1081A001 AGGRESSOR® 4

U.S. SUGGESTED RETAIL: \$130.00 F0517

- SIZES:** 4-13, 14, 15 **WEIGHT:** 8.48 oz.
- AVAILABLE:** AT ONCE
- FEATURES**
- EVA sockliner
 - Seamless Ecsaine2 upper
 - DuoSole® outsole
 - Ankle padding support

COLORS

001	Black/Black
102	White/Pure Silver
401	Soft Sky/Midnight



001



102



401

1081A036 MEN'S AGGRESSOR 4 TOKYO

U.S. SUGGESTED RETAIL: \$130.00 F0517

- SIZES:** 4-13, 14, 15
- AVAILABLE:** 1/1/2021
- FEATURES**
- EVA sockliner
 - Seamless Ecsaine2 upper
 - DuoSole® outsole
 - Ankle padding support

COLORS

701	Sunrise Red/Eclipse Black
-----	---------------------------



701

1081A016 JB ELITE IV

U.S. SUGGESTED RETAIL: \$100.00 F0055

- SIZES:** 4-13, 14, 15
- AVAILABLE:** AT ONCE
- FEATURES**
- Lace Garage™ technology
 - Seamless construction
 - Open mesh upper

COLORS

002	Black/Gunmetal
100	White/Soft Sky
600	Classic Red/White

TEAM BANK RESERVED



002



100



600

1081A029 MEN'S MATCONTROL 2

U.S. SUGGESTED RETAIL: \$85.00 F5764

- SIZES:** 6-13, 14, 15
- AVAILABLE:** AT ONCE
- FEATURES**
- Flexible upper construction
 - Shoelace garage
 - One-piece outsole
 - Flexion grooves on outsole
 - Soft ankle mesh

COLORS

001	Black/Classic Red
100	White/Pure Silver
400	Asics Blue/White



001



100



400

1081A030 MEN'S SNAPDOWN 3

U.S. SUGGESTED RETAIL: **\$75.00** F5214

SIZES: 5-13, 14, 15
AVAILABLE: 001, 020: AT ONCE, 401: 1/1/2021

- FEATURES**
- Kimono tongue construction
 - Shoelace garage
 - Stitch-down overlays
 - Gripping outsole

COLORS

001	Black/White
020	Carrier Grey/White
401	Peacoat/Classic Red



1081A031 MEN'S SNAPDOWN 3 WIDE

U.S. SUGGESTED RETAIL: **\$75.00** F5214

SIZES: 5-13, 14, 15
AVAILABLE: AT ONCE

- FEATURES**
- Kimono tongue construction
 - Shoelace garage
 - Stitch-down overlays
 - Gripping outsole

COLORS

020	Carrier Grey/White
-----	--------------------



1084A009 KIDS SNAPDOWN 3 GS

U.S. SUGGESTED RETAIL: **\$65.00** F0523

SIZES: K10, K11, K12, K13, 1-6
AVAILABLE: AT ONCE

- FEATURES**
- Kimono tongue construction
 - Shoelace garage
 - Stitch-down overlays
 - Gripping outsole

COLORS

001	Black/White
020	Carrier Grey/White



1081A021 MATFLEX 6

U.S. SUGGESTED RETAIL: **\$55.00** F5203

SIZES: 6-13, 14, 15
AVAILABLE: 001, 002: AT ONCE, 402, 603: 1/1/2021

- FEATURES**
- Lace Garage™ technology
 - Synthetic leather

COLORS

001	Black/Silver
002	Black/Champagne
402	Peacoat/White
603	Classic Red/Classic Red

TEAM BANK RESERVED



1084A007 KIDS MATFLEX® 6 GS

U.S. SUGGESTED RETAIL: **\$50.00** F0572

SIZES: K10, K11, K12, K13, 1-6
AVAILABLE: 001, 002: AT ONCE, 402: 1/1/2021

- FEATURES**
- Lace Garage™ technology
 - Synthetic leather

COLORS

001	Black/Silver
002	Black/Champagne
402	Peacoat/White

TEAM BANK RESERVED



This image shows a single sheet of white paper with horizontal ruling lines. The lines are evenly spaced and run across the width of the page. There are no margins, text, or other markings on the paper.

TENNIS/ FIELD HOCKEY

Gel-Cool Polo Shirt (2041A031)
Tennis 7" Short-(2041A080)

CHRIS EUBANKS
Highest ATP Ranking - 147
2016 - Named 1st team All-ACC,
ITA All-American, and ACC Player of the Year
2017 - Ranked #4 in the NCAA

TE3358 CENTERLINE™ JERSEY

U.S. SUGGESTED RETAIL: \$45.00 F0522

SIZES: S, M, L, XL, 2XL

AVAILABLE: AT ONCE

FABRIC: 100% POLYESTER INTERLOCK

FEATURES

- V neck collar
- Lightweight
- Flatlock stitching
- Vertical mesh panel down the back for ventilation
- Slight tail in the back
- Contrast front and back panels for a clean look
- Screening instruction C

COLORS

0101	White/White
2301	Red/White
4301	Royal/White
5001	Navy/White
9001	Black/White
9401	Steel Grey/White



TE2522 COURT SHORT

U.S. SUGGESTED RETAIL: \$38.00 F0091

SIZES: S, M, L, XL, 2XL

AVAILABLE: AT ONCE

FABRIC: 100% POLYESTER

FEATURES

- Encased elastic waistband
- Contrast paneling
- Side pockets
- Drawcord at waistband
- Inseam: 9"
- Screening instruction D

COLORS

0101	White/White
4301	Royal/White
5001	Navy/White
9001	Black/White
9401	Steel Grey/White



TE3359 CENTERLINE™ SHORT

U.S. SUGGESTED RETAIL: \$42.00 F0012

SIZES: S, M, L, XL, 2XL

AVAILABLE: AT ONCE

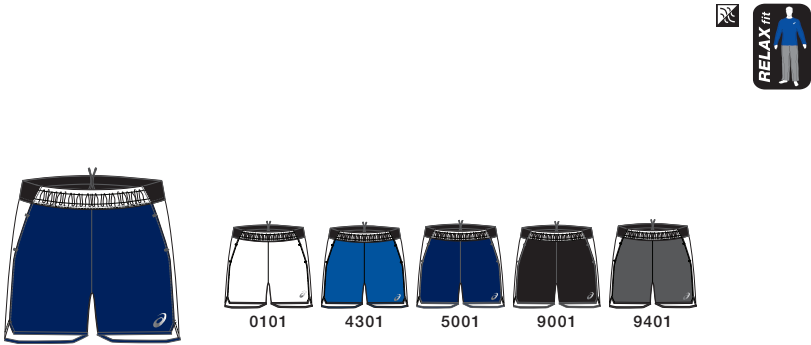
FABRIC: 89% POLYESTER / 11% SPANDEX

FEATURES

- Drawcord at waistband
- Side pockets
- Flatband elastic waistband at the back
- Contrast front and back panels for a clean look
- Side vents
- Inseam: 8"
- Screening instruction C

COLORS

0101	White/White
4301	Royal/White
5001	Navy/White
9001	Black/White
9401	Steel Grey/White



2161A058 CIRCUIT TRAIN 7" WOVEN SHORT

U.S. SUGGESTED RETAIL: \$40.00 F0002

SIZES: XS, S, M, L, XL, 2XL

AVAILABLE: AT ONCE

FABRIC: 89% POLYESTER / 11% SPANDEX

FEATURES

- Regular fit
- Stretch woven fabric provides free range of motion and comfortable fit
- 2" waistband for enhanced fit when performing
- Recycled polyester provides sustainable solution to basic polyester
- 7" inseam

COLORS

50	Navy
90	Black
94	Steel Grey
99	Steel Grey Heather



TE2523 RALLY® DRESS

U.S. SUGGESTED RETAIL: \$50.00 F0052

SIZES: XS, S, M, L, XL, 2XL

AVAILABLE: AT ONCE

FABRIC: 92% POLYESTER / 8% SPANDEX

FEATURES

- Moisture management
- Built-in shelf bra for maximum support
- Princess side seams for flattering fit
- Contrast side panels
- T-back panel
- Screening instruction D

COLORS

0101	White/White
2301	Red/White
4301	Royal/White
5001	Navy/White
9001	Black/White



TE2116 ALLEY™ TANK

U.S. SUGGESTED RETAIL: \$45.00 F0522

SIZES: XS, S, M, L, XL, 2XL

AVAILABLE: AT ONCE

FABRIC: 92% POLYESTER / 8% SPANDEX

FEATURES

- ASICS® Motion Dry™ Fabric
- Moisture management
- Built in shelf bra
- Racerback panel with printed design
- Screening instruction D

COLORS

0190	White/Black
2301	Red/White
4301	Royal/White
5001	Navy/White
9001	Black/White



TE1772 LOVE™ SKORT

U.S. SUGGESTED RETAIL: \$45.00 F0522

SIZES: XS, S, M, L, XL, 2XL

AVAILABLE: AT ONCE

FABRIC: 92% POLYESTER / 8% SPANDEX

FEATURES

- Coolmax4 crotch gusset
- Self panel pleats
- Outseam: 13.5"
- Built-in 3" inseam compression short
- ASICS® Motion Dry™ Fabric
- Hydrology®
- Screening instruction D

COLORS

01	White
23	Red
43	Royal
50	Navy
90	Black



FS2258 ATTACKER® TANK

U.S. SUGGESTED RETAIL: \$40.00 F0002

SIZES: XS, S, M, L, XL, 2XL

AVAILABLE: AT ONCE

FABRIC: 89% NYLON / 11% LYCRA3

FEATURES

- Contrast white piping
- ASICS Motion Dry™
- Hydrology®
- Screening instruction C

COLORS

4301	Royal/White
5001	Navy/White
9001	Black/White



TEAM BANK RESERVED

FS2259 ATTACKER™ SKORT

U.S. SUGGESTED RETAIL: \$48.00 F0042

SIZES: XS, S, M, L, XL, 2XL

AVAILABLE: AT ONCE

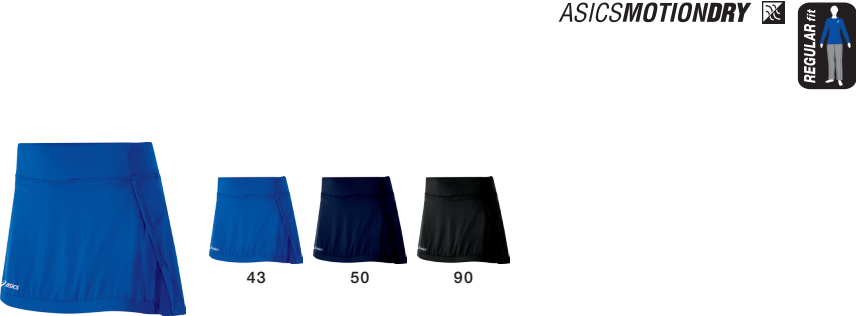
FABRIC: 89% NYLON / 11% LYCRA3

FEATURES

- Contour waistband for a flattering fit
- Built-in 2.5" Inseam compression short
- 12.5" outseam
- ASICS Motion Dry™
- Hydrology®
- Screening instruction C

COLORS

43	Royal
50	Navy
90	Black



TEAM BANK RESERVED

1041A083 MEN'S COURT FF 2

U.S. SUGGESTED RETAIL: \$170.00 F0539

SIZES: 4-13, 14, 15 WEIGHT: 13.8 oz.
AVAILABLE: 1/1/2021

- FEATURES
- PGuard® toe protector
 - MONO-SOCK® fit system
 - Seamless construction
 - Rearfoot and forefoot GEL® technology cushioning systems
 - Trusstic System® technology
 - AHAR® Plus outsole
 - FlyteFoam™ midsole technology

COLORS

102	White/Mako Blue
402	French Blue/Amber



NEW
102



NEW
402

1042A076 WOMEN'S COURT FF 2

U.S. SUGGESTED RETAIL: \$170.00 F0539

SIZES: 5-12 WEIGHT: 13.8 oz.
AVAILABLE: 1/1/2021

- FEATURES
- PGuard® toe protector
 - MONO-SOCK® fit system
 - Seamless construction
 - Rearfoot and forefoot GEL® technology cushioning systems
 - Trusstic System® technology
 - AHAR® Plus outsole
 - FlyteFoam™ midsole technology

COLORS

021	Slate Grey/White
-----	------------------



NEW
021

NEW

1041A185 MEN'S GEL-RESOLUTION 8 TOKYO

U.S. SUGGESTED RETAIL: \$150.00 F0528

SIZES: 6-13, 14, 15
AVAILABLE: 1/1/2021

- FEATURES
- 6-month outsole warranty
 - Gender-specific cushioning
 - Flexion Fit® upper
 - Rear foot and forefoot GEL® technology cushioning systems
 - PGuard® toe protector
 - Solyte® midsole material
 - Trusstic System® technology
 - I.G.S® (Impact Guidance System) technology
 - AHAR® Plus outsole
 - P.H.F™ (Personal Heel Fit) collar lining

COLORS

701	Sunrise Red/Eclipse Black
-----	---------------------------



701

NEW

1042A131 WOMEN'S GEL-RESOLUTION 8 TOKYO

U.S. SUGGESTED RETAIL: \$140.00 F0077

SIZES: 5-12
AVAILABLE: 1/1/2021

- FEATURES
- 6-month outsole warranty
 - Gender-specific cushioning
 - Flexion Fit® upper
 - Rear foot and forefoot GEL® technology cushioning systems
 - PGuard® toe protector
 - Solyte® midsole material
 - Trusstic System® technology
 - I.G.S® (Impact Guidance System) technology
 - AHAR® Plus outsole
 - P.H.F™ (Personal Heel Fit) collar lining

COLORS

701	Sunrise Red/Eclipse Black
-----	---------------------------



701

1041A079 MEN'S GEL-RESOLUTION 8

U.S. SUGGESTED RETAIL: \$140.00 F0077

SIZES: 6-13, 14, 15
AVAILABLE: 100: AT ONCE, 103, 403: 1/1/2021

- FEATURES**
- 6-month outsole warranty
 - Gender-specific cushioning
 - Flexion Fit® upper
 - Rear foot and forefoot GEL® technology cushioning systems
 - PGuard® toe protector
 - Solyte® midsole material
 - Trusstic System® technology
 - I.G.S® (Impact Guidance System) technology
 - AHAR® Plus outsole
 - P.H.F™ (Personal Heel Fit) collar lining

100	White/Pure Silver
103	White/Mako Blue
403	French Blue/White



1041A113 MEN'S GEL-RESOLUTION 8 WIDE

U.S. SUGGESTED RETAIL: \$140.00 F0077

- SIZES:** 6-13, 14, 15
AVAILABLE: 1/1/2021
- FEATURES**
- 6-month outsole warranty
 - Gender-specific cushioning
 - Flexion Fit® upper
 - Rear foot and forefoot GEL® technology cushioning systems
 - PGuard® toe protector
 - Solyte® midsole material
 - Trusstic System® technology
 - I.G.S® (Impact Guidance System) technology
 - AHAR® Plus outsole
 - P.H.F™ (Personal Heel Fit) collar lining

103	White/Mako Bue
-----	----------------



1041A076 MEN'S GEL-RESOLUTION 8 CLAY

U.S. SUGGESTED RETAIL: \$140.00 F0077

- SIZES:** 6-13, 14, 15
AVAILABLE: 1/1/2021
- FEATURES**
- Flexion Fit® upper
 - Rear foot and forefoot GEL® technology cushioning systems
 - Solyte® midsole material
 - Trusstic System® technology
 - PGuard® toe protector
 - I.G.S® (Impact Guidance System) technology
 - P.H.F™ (Personal Heel Fit) collar lining
 - AHAR® Plus outsole

403	French Blue/White
-----	-------------------



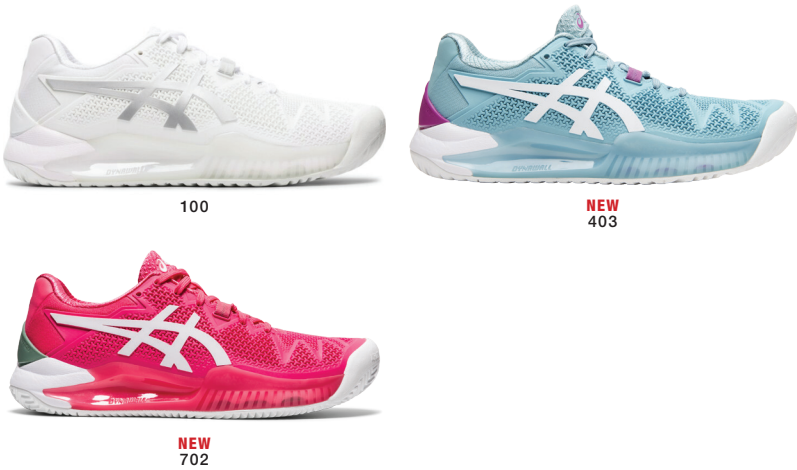
1042A072 WOMEN'S GEL-RESOLUTION 8

U.S. SUGGESTED RETAIL: \$140.00 F0077

SIZES: 5-12
AVAILABLE: 100: AT ONCE, 403, 702: 1/1/2021

- FEATURES**
- 6-month outsole warranty
 - Gender-specific cushioning
 - Flexion Fit® upper
 - Rear foot and forefoot GEL® technology cushioning systems
 - PGuard® toe protector
 - Solyte® midsole material
 - Trusstic System® technology
 - I.G.S® (Impact Guidance System) technology
 - AHAR® Plus outsole
 - P.H.F™ (Personal Heel Fit) collar lining

100	White/Pure Silver
403	Smoke Blue/White
702	Pink Cameo/White



1042A097 WOMEN'S GEL-RESOLUTION 8 WIDE

U.S. SUGGESTED RETAIL: \$140.00 F0077

- SIZES:** 5-12
AVAILABLE: 1/1/2021
- FEATURES**
- 6-month outsole warranty
 - Gender-specific cushioning
 - Flexion Fit® upper
 - Rear foot and forefoot GEL® technology cushioning systems
 - PGuard® toe protector
 - Solyte® midsole material
 - Trusstic System® technology
 - I.G.S® (Impact Guidance System) technology
 - AHAR® Plus outsole
 - P.H.F™ (Personal Heel Fit) collar lining

403	Smoke Blue/White
-----	------------------



1042A070 WOMEN'S GEL-RESOLUTION 8 CLAY

U.S. SUGGESTED RETAIL: \$140.00 F0077

- SIZES:** 5-12
AVAILABLE: 1/1/2021
- FEATURES**
- Flexion Fit® upper
 - Rear foot and forefoot GEL® technology cushioning systems
 - Solyte® midsole material
 - Trusstic System® technology
 - PGuard® toe protector
 - I.G.S® (Impact Guidance System) technology
 - P.H.F™ (Personal Heel Fit) collar lining
 - AHAR® Plus outsole

702	Pink Cameo/White
-----	------------------



1044A018 KIDS GEL-RESOLUTION 8 GS

U.S. SUGGESTED RETAIL: \$80.00 F0004

SIZES: 1-7

AVAILABLE: 1/1/2021

FEATURES

- Flexion Fit® upper
- Rear foot and forefoot GEL® technology cushioning systems
- PGuard® toe protector
- Solyte® midsole material
- Trusstic System® technology

COLORS

403	French Blue/White
702	Pink Cameo/White



NEW
403



NEW
702

NEW

1041A187 MEN'S SOLUTION® SPEED FF 2 CLAY

U.S. SUGGESTED RETAIL: \$130.00 F0517

SIZES: 7-13, 14, 15 WEIGHT: 12.19 oz.

AVAILABLE: 1/1/2021

FEATURES

- FlyteFoam™ midsole technology
- AHAR® Plus outsole
- Twisstust system
- Rearfoot and Forefoot GEL® technology cushioning tystems
- Removable tockliner
- PGuard® toe protector
- F.A.S.T.™ heel
- Ortholite® sockliner

COLORS

800	Amber/White
-----	-------------



800

NEW

1041A182 MEN'S SOLUTION® SPEED FF 2

U.S. SUGGESTED RETAIL: \$130.00 F0517

SIZES: 7-13, 14, 15 WEIGHT: 12.4 oz.

AVAILABLE: 1/1/2021

FEATURES

- Rearfoot and forefoot GEL® technology cushioning systems
- PGuard® toe protector
- Flexion Fit® upper
- P.H.F™ (Personal Heel Fit) collar lining
- Solyte® midsole material
- Lateral propulsion trusstic
- AHAR® outsole

COLORS

100	White/Black
800	Amber/White
101	White/Mako Blue



100



800



101

NEW

1042A142 WOMEN'S SOLUTION® SPEED FF 2 L.E. (New Strong)

U.S. SUGGESTED RETAIL: \$130.00 F0517

SIZES: 5-12 WEIGHT: 9.8 oz.

AVAILABLE: 1/1/2021

FEATURES

- Rearfoot and forefoot GEL® technology cushioning systems
- PGuard® toe protector
- Flexion Fit® upper
- P.H.F™ (Personal Heel Fit) collar lining
- Solyte® midsole material
- Lateral propulsion trusstic
- AHAR® outsole

COLORS

100	White/Champagne
-----	-----------------



100

NEW

1042A134 WOMEN'S SOLUTION® SPEED FF 2 CLAY

U.S. SUGGESTED RETAIL: \$130.00 F0517

SIZES: 5-12 WEIGHT: 9.8 oz.

AVAILABLE: 1/1/2021

FEATURES

- FlyteFoam™ midsole technology
- AHAR® Plus outsole
- Twissttrust system
- Rearfoot and Forefoot GEL® technology cushioning tystems
- Removable tockliner
- PGuard® toe protector
- F.A.S.T.™ heel
- Ortholite® sockliner

COLORS

400	Smoke Blue/White
-----	------------------



400

NEW

1042A136 WOMEN'S SOLUTION® SPEED FF 2

U.S. SUGGESTED RETAIL: \$130.00 F0517

SIZES: 5-12 WEIGHT: 9.8 oz.

AVAILABLE: 1/1/2021

FEATURES

- Rearfoot and forefoot GEL® technology cushioning systems
- PGuard® toe protector
- Flexion Fit® upper
- P.H.F™ (Personal Heel Fit) collar lining
- Solyte® midsole material
- Lateral propulsion trusstic
- AHAR® outsole

COLORS

100	White/Black
400	Smoke Blue/White



100



400

1041A092 MEN'S COURT SPEED FF

U.S. SUGGESTED RETAIL: \$110.00 F0506

SIZES: 6-13, 14, 15

AVAILABLE: 102: AT ONCE, 105, 403: 1/1/2021

FEATURES

- PGuard® toe protector
- Seamless construction
- Rear foot and Forefoot GEL® technology cushioning systems
- Trusstic System® technology

COLORS

102	White/Pure Silver
105	White/Mako Blue
403	French Blue/Amber



102



NEW
105



NEW
403

1042A080 WOMEN'S COURT SPEED FF

U.S. SUGGESTED RETAIL: \$110.00 F0506

SIZES: 5-12

AVAILABLE: 102: AT ONCE, 701: 1/1/2021

FEATURES

- PGuard® toe protector
- Seamless construction
- Rear foot and Forefoot GEL® technology cushioning systems
- Trusstic System® technology

COLORS

102	White/White
701	Pink Cameo/White



102



NEW
701

1041A045 MEN'S GEL-CHALLENGER® 12

U.S. SUGGESTED RETAIL: \$100.00 F0055

SIZES: 6-13, 14, 15 **WEIGHT:** 12.39 oz.
AVAILABLE: 113: AT ONCE, 117: 1/1/2021

- FEATURES**
- Solyte® midsole material
 - Rearfoot and forefoot GEL® technology cushioning systems
 - Trusstic System® technology
 - Ortholite® sockliner
 - Removable sockliner
 - AHAR® outsole
 - PGuard® toe protector

COLORS

113	White/Silver
117	White/Classic Red



113

NEW
117

1041A048 MEN'S GEL-CHALLENGER® 12 CLAY

U.S. SUGGESTED RETAIL: \$100.00 F0055

SIZES: 6-13, 14, 15 **WEIGHT:** 12.39 oz.
AVAILABLE: 1/1/2021

- FEATURES**
- Solyte® midsole material
 - Rearfoot and forefoot GEL® Technology cushioning systems
 - Trusstic System® technology
 - Ortholite® sockliner
 - Removable sockliner
 - AHAR® outsole
 - PGuard® toe protector

COLORS

117	White/Classic Red
-----	-------------------



NEW
117

1042A041 WOMEN'S GEL-CHALLENGER® 12

U.S. SUGGESTED RETAIL: \$100.00 F0055

SIZES: 5-12 **WEIGHT:** 9.8 oz.
AVAILABLE: 113: AT ONCE, 021: 1/1/2021

- FEATURES**
- Solyte® midsole material
 - Rearfoot and forefoot GEL® technology cushioning systems
 - Trusstic System® technology
 - Ortholite® sockliner
 - Removable sockliner
 - AHAR® outsole
 - PGuard® toe protector

COLORS

113	White/Silver
021	Slate Grey/Pink Cameo



113

NEW
021

1042A039 WOMEN'S GEL-CHALLENGER® 12 CLAY

U.S. SUGGESTED RETAIL: \$100.00 F0055

SIZES: 5-12 **WEIGHT:** 9.8 oz.
AVAILABLE: 1/1/2021

- FEATURES**
- Solyte® midsole material
 - Rearfoot and forefoot GEL® Technology cushioning systems
 - Trusstic System® technology
 - Ortholite® sockliner
 - Removable sockliner
 - AHAR® outsole
 - PGuard® toe protector

COLORS

021	Slate Grey/Pink Cameo
-----	-----------------------



NEW
021

NEW

1041A192 MEN'S GEL-GAME® 8

U.S. SUGGESTED RETAIL: \$80.00 F0044

SIZES: 7-13, 14 WEIGHT: 11.72 oz.

AVAILABLE: 1/1/2021

FEATURES

- Forefoot GEL® technology cushioning system (COURT)
- EVA midsole
- Ortholite® sockliner
- Removable sockliner

COLORS

101	White/Black
102	White/Mako Blue
400	French Blue/Pure Silver



NEW

1042A152 WOMEN'S GEL-GAME® 8

U.S. SUGGESTED RETAIL: \$80.00 F0044

SIZES: 5-12 WEIGHT: 9.3 oz.

AVAILABLE: 1/1/2021

FEATURES

- Forefoot GEL® technology cushioning system (COURT)
- EVA midsole
- Ortholite® sockliner
- Removable sockliner

COLORS

101	White/Black
700	Pink Cameo/White



NEW

1044A018 KIDS GEL-GAME 8 GS

U.S. SUGGESTED RETAIL: \$65.00 F5753

SIZES: 1-7

AVAILABLE: 1/1/2021

FEATURES

- Trusstic System® technology
- Forefoot and rearfoot GEL® technology cushioning systems

COLORS

400	French Blue/Pure Silver
700	Pink Cameo/White



1041A074

MEN'S GEL-DEDICATE 6

U.S. SUGGESTED RETAIL: \$70.00 F0583

SIZES: 6-13, 14

AVAILABLE: 101: AT ONCE, 104, 405: 1/1/2021

FEATURES

- Solid rubber outsole
- Forefoot GEL® technology cushioning systems
- Trusstic System® technology

COLORS

101	White/Silver
104	White/Mako Blue
405	French Blue/Amber



1042A067

WOMEN'S GEL-DEDICATE 6

U.S. SUGGESTED RETAIL: \$70.00 F0583

SIZES: 5-12

AVAILABLE: 101: AT ONCE, 021, 401: 1/1/2021

FEATURES

- Solid rubber outsole
- Forefoot GEL® technology cushioning systems
- Trusstic System® technology

COLORS

101	White/Silver
021	Oyster Grey/Pink Cameo
401	Smoke Blue/White



1112A013 WOMEN'S GEL-LETHAL MP 7

U.S. SUGGESTED RETAIL: **\$100.00** F0055

SIZES: 6-11, 12 **WEIGHT:** 11.1 oz.

AVAILABLE: AT ONCE

FEATURES

- H610mm® heel gradient
- Trusstic System® technology
- Multi-studded molded rubber outsole
- Rearfoot GEL® technology cushioning system
- Raised gradient heel

COLORS

100 White/Mid Grey

TEAM BANK RESERVED



100

1112A016 WOMEN'S GEL-LETHAL MP 7

U.S. SUGGESTED RETAIL: **\$100.00** F0055

SIZES: 6-11, 12 **WEIGHT:** 11.1 oz.

AVAILABLE: AT ONCE

FEATURES

- H610mm® heel gradient
- Trusstic System® technology
- Multi-studded molded rubber outsole
- Rearfoot GEL® technology cushioning system
- Raised gradient heel

COLORS

009 Black/White



009

1071A044 MEN'S BLAST FF 2

U.S. SUGGESTED RETAIL: **\$140.00** F0077

SIZES: 7-13, 14

AVAILABLE: 1/1/2021

FEATURES

-

COLORS

101 White/Reborn Blue



NEW

101

NEW

1072A046 WOMEN'S BLAST FF 2

U.S. SUGGESTED RETAIL: **\$140.00** F0077

SIZES: 5-12

AVAILABLE: 1/1/2021

FEATURES

-

COLORS

102 White/Champagne



102

Q559N WOMEN'S ULTRALYTE CHEER 2

U.S. SUGGESTED RETAIL: \$75.00 F5214

SIZES: 5-12, 13, 14
AVAILABLE: AT ONCE
FEATURES

- Low-profile midsole
- Synthetic leather upper

COLORS
0193 White/Silver
TEAM BANK RESERVED



0193

Q654Y WOMEN'S CHEER™ 8

U.S. SUGGESTED RETAIL: \$60.00 F0033

SIZES: 5-12, 13, 14 WEIGHT: 7.0 oz.
AVAILABLE: AT ONCE
FABRIC:
FEATURES

- Interchangeable 2-color card system
- Low-profile midsole
- Synthetic leather upper

COLORS
0193 White/Silver/Interchange
TEAM BANK RESERVED



0193



C680Y KIDS CHEER™ 8 GS

U.S. SUGGESTED RETAIL: \$55.00 F5203

SIZES: K10, K11, K12, K13, 1-3 WEIGHT: 7.0 oz.
AVAILABLE: AT ONCE
FEATURES

- Synthetic leather upper
- Interchangeable 2-color card system

COLORS
0193 White/Silver
TEAM BANK RESERVED



0193



TRAINING



Tokyo Sportswear Anorack (2031B144)
Road 5" Short (2011A769)

JORDAN BURROUGHS
Olympic Champion
4x World Champion
2x NCAA Champion

2161A061 UNISEX EVENT TEE

U.S. SUGGESTED RETAIL: \$14.00 F0007

SIZES: 3XS, 2XS, XS, S, M, L, XL, 2XL, 3XL, 4XL

AVAILABLE: AT ONCE

FABRIC: 100% COTTON

FEATURES

- Relaxed fit
- Perfect tee for promotion and events
- ASICS lockup logo on back shoulder line

COLORS

01	White
94	Steel Grey



2161A063 CIRCUIT TRAIN SLEEVELESS
2161A062 CIRCUIT TRAIN SHORT SLEEVE
2161A057 CIRCUIT TRAIN LONG SLEEVE

U.S. SUGGESTED RETAIL: \$25.00 F0521

\$28.00 F0041

\$35.00 F0571

SIZES: XS, S, M, L, XL, 2XL

AVAILABLE: AT ONCE

FABRIC: 100% POLYESTER

FEATURES

- Regular Fit
- Doubleknit 100% polyester fabric provides moisture management and wicking properties to ensure a comfortable workout
- Flatlock seams reduce chafing

COLORS

01	White
23	Red
43	Royal
50	Navy
90	Black
94	Steel Grey

TEAM BANK RESERVED



2161A059 CIRCUIT TRAIN 10" KNIT SHORT

U.S. SUGGESTED RETAIL: \$38.00 F0091

SIZES: XS, S, M, L, XL, 2XL

AVAILABLE: AT ONCE

FABRIC: 100% POLYESTER

FEATURES

- Regular fit
- 2" waistband for enhanced fit and feel when performing
- Recycled polyester provides more sustainable solution than basic poly
- 10" inseam

COLORS

50	Navy
90	Black
94	Steel Grey
99	Steel Grey Heather

TEAM BANK RESERVED



2161A058 CIRCUIT TRAIN 7" WOVEN SHORT

U.S. SUGGESTED RETAIL: \$40.00 F0002

SIZES: XS, S, M, L, XL, 2XL

AVAILABLE: AT ONCE

FABRIC: 89% POLYESTER / 11% SPANDEX

FEATURES

- Regular fit
- Stretch woven fabric provides free range of motion and comfortable fit
- 2" waistband for enhanced fit when performing
- Recycled polyester provides sustainable solution to basic polyester
- 7" inseam

COLORS

50	Navy
90	Black
94	Steel Grey
99	Steel Grey Heather

TEAM BANK RESERVED



2161A056 CIRCUIT TRAIN 1/4 ZIP

U.S. SUGGESTED RETAIL: \$45.00 F0522

SIZES: XS, S, M, L, XL, 2XL, 3XL

AVAILABLE: AT ONCE

FABRIC: 100% POLYESTER

FEATURES

- Regular Fit
- Doubleknit 100% polyester fabric provides moisture management and wicking properties to ensure a comfortable workout
- 1/4 zip silhouette
- Flatlock seams reduce chafing

COLORS

01	White
23	Red
43	Royal
50	Navy
90	Black
94	Steel Grey



2081A026 COMPRESSION SHORT

U.S. SUGGESTED RETAIL: **\$30.00** F0051

SIZES: XS, S, M, L, XL, 2XL, 3XL

AVAILABLE: 7/1/2019

FABRIC: 88% POLYESTER / 12% SPANDEX

FEATURES

- Poly/Span fabric provides locked in feel with perfect amount of stretch
- New 2" jaquard waistband provides perfect, locked in fit
- 9" inseam
- Minimal stitching for distraction free wearing experience

COLORS

90	Black
94	Steel Grey



2081A029 COMPRESSION TIGHT

U.S. SUGGESTED RETAIL: **\$35.00** F0571

SIZES: XS, S, M, L, XL, 2XL, 3XL

AVAILABLE: 7/1/2019

FABRIC: 88% POLYESTER / 12% SPANDEX

FEATURES

- Poly/Span fabric provides locked in feel with perfect amount of stretch
- New 2" jaquard waistband provides perfect, locked in fit
- Mesh panel ventilation behind knee for increased breathability
- Minimal stitching for distraction free wearing experience

COLORS

9090	Black/Black
9490	Steel Grey/Black



2162A084 CIRCUIT TRAIN SLEEVELESS
2162A086 CIRCUIT TRAIN SHORT SLEEVE
2162A083 CIRCUIT TRAIN LONG SLEEVE

U.S. SUGGESTED RETAIL: **\$25.00** F0521

\$28.00 F0041

\$35.00 F0571

SIZES: XS, S, M, L, XL, 2XL

AVAILABLE: AT ONCE

FABRIC: 50% POLYESTER / 25% COTTON / 25% RAYON

FEATURES

- Regular fit
- Triblend fabric provides super soft hand for enhanced comfort
- Stretch fabric allows for free range of motion

COLORS

01	White
23	Red
43	Royal
50	Navy
90	Black
94	Steel Grey
99	Steel Grey Heather

TEAM BANK RESERVED



2162A080 CIRCUIT TRAIN BRA

U.S. SUGGESTED RETAIL: **\$30.00** F0051

SIZES: XS, S, M, L, XL, 2XL

AVAILABLE: AT ONCE

FABRIC: 92% POLYESTER / 8% SPANDEX

FEATURES

- Fitted fit
- Perfect bra for every day use
- Light to medium support
- Double layer for extra support and coverage

COLORS

50	Navy
90	Black
94	Steel Grey



2162A082 CIRCUIT TRAIN 3" KNIT SHORT

U.S. SUGGESTED RETAIL: **\$25.00** F0521

SIZES: XS, S, M, L, XL, 2XL

AVAILABLE: AT ONCE

FABRIC: 100% POLYESTER

FEATURES

- Regular fit
- Elevated taping details along side of short
- Wide waistband for extra comfort
- 3" inseam (linerless)

COLORS

23	Red
43	Royal
50	Navy
90	Black
94	Steel Grey
99	Steel Grey Heather

TEAM BANK RESERVED



2162A081 CIRCUIT TRAIN 3" WOVEN SHORT

U.S. SUGGESTED RETAIL: **\$30.00** F0051

SIZES: XS, S, M, L, XL, 2XL

AVAILABLE: AT ONCE

FABRIC: 89% POLYESTER / 11% SPANDEX

FEATURES

- Regular fit
- 3" inseam
- Elevated piping detail
- Comfortable flat elastic waistband

COLORS

23	Red
43	Royal
50	Navy
90	Black
94	Steel Grey

TEAM BANK RESERVED



2162A085 CIRCUIT TRAIN TIGHT

U.S. SUGGESTED RETAIL: **\$45.00** F0522

SIZES: XS, S, M, L, XL, 2XL

AVAILABLE: AT ONCE

FABRIC: 92% POLYESTER / 8% SPANDEX

FEATURES

- Fitted fit
- Elastic waistband provides comfort for wearer
- Full length tight silhouette

COLORS

50	Navy
90	Black
99	Steel Grey Heather



2052A117 WARM-UP LONG SLEEVE

U.S. SUGGESTED RETAIL: **\$35.00** F0571

SIZES: XS, S, M, L, XL, 2XL

AVAILABLE: 7/1/2019

FABRIC: 88% POLYESTER / 12% SPANDEX

FEATURES

- Soft hand fabric with exaggerated fit for comfort when warming up
- Crew neck silhouette

COLORS

90	Black
01	White
94	Steel Grey
99	Steel Grey Heather

TEAM BANK RESERVED



WL2149 TEAM 3/4 CAPRI TIGHT

U.S. SUGGESTED RETAIL: **\$40.00** F0002

SIZES: XS, S, M, L, XL, 2XL

AVAILABLE: AT ONCE

FABRIC: 80% POLYESTER / 20% SPANDEX

FEATURES

- Flattering waistband
- Flat seam stitching
- Superior fit without feeling weighed down
- Key pocket in back waistband
- Screening instruction C
- Capri inseam 19.5"

COLORS

43	Royal
90	Black
94	Steel Grey



ASICS*MOTION*DRY



This image shows a single sheet of white paper with horizontal ruling lines. The lines are evenly spaced and run across the width of the page. There are no margins, text, or other markings on the paper.

TRAVEL/ SIDELINE

2161A102 TEAM RAIN JACKET

U.S. SUGGESTED RETAIL: \$125.00 F0526

SIZES: XS, S, M, L, XL, 2XL, 3XL, 4XL

AVAILABLE: 7/1/2020

FABRIC: 100% NYLON

FEATURES

- 2.5 layer, durable water proof shell fabric + 3D print on back side
- Critically seam sealed
- Reverse entry hand pocket for easy storage and access to valuables
- Elastic bungee hoody with stopper for easy fit adjustment
- Micro velcro cuff for easy adjustability
- Relaxed fit

Heat transfer recommended. Embroidery not recommended for full water proof functionality.

COLORS

90	Team Black
----	------------



90

2161A101 TEAM RAIN PANT

U.S. SUGGESTED RETAIL: \$125.00 F0526

SIZES: XS, S, M, L, XL, 2XL, 3XL, 4XL, LT, XLT

AVAILABLE: 7/1/2020

FABRIC: 100% NYLON

FEATURES

- 2.5 layer, durable water proof shell fabric + 3D print on back side
- Critically seam sealed
- Auto lock zipper and gator at ankle for easy on/off and water protection
- Reverse entry hand pocket for easy storage and access to valuables
- Elastic bungee waistband with stopper for easy fit adjustment
- Relaxed fit

COLORS

90	Team Black
----	------------



90

2161A103 THERMOPOLIS TM 1/4 ZIP

U.S. SUGGESTED RETAIL: \$70.00 F0053

SIZES: XS, S, M, L, XL, 2XL, 3XL

AVAILABLE: 7/1/2020

FABRIC: 80% POLYESTER, 20% SPANDEX

FEATURES

- ASICS Thermopolis fabric provides butter soft hand feel, attractive visual and brushed interior for warmth
- 1/4 zip silhouette is great for on/off wear, sidelines and warmups alike
- Relaxed fit

COLORS

01	Team White
23	Team Red Heather
43	Team Royal Heather
50	Team Navy Heather
90	Team Black
99	Team Steel Grey Heather



2161A106 THERMOPOLIS TM FLEECE 1/4 ZIP HOODY

U.S. SUGGESTED RETAIL: \$75.00 F0573

SIZES: XS, S, M, L, XL, 2XL, 3XL

AVAILABLE: 7/1/2020

FABRIC: 85% POLYESTER, 15% SPANDEX

FEATURES

- Unique FABRIC MIX for enhanced visual
- Fabric 1 provides traditional "Thermopolis" heathered visual, and buttery soft hand feel
- Brushed for warmth
- Fabric 2 provides additional warmth benefits
- 1/4 zip hoody silhouette for modern and trendy look
- Relaxed fit

COLORS

01	Team White
23	Team Red
43	Team Royal
50	Team Navy
90	Team Black
94	Team Steel Grey



2161A104 THERMOPOLIS FLEECE TM TAPERED PANT

U.S. SUGGESTED RETAIL: \$75.00 F0573

SIZES: XS, S, M, L, XL, 2XL, 3XL

AVAILABLE: 7/1/2020

FABRIC: 85% POLYESTER, 15% SPANDEX

FEATURES

- ASICS Thermopolis fabric provides butter soft hand feel, attractive visual and brushed interior for warmth
- 2" waistband for locked in fit and feel
- Jogger silhouette for on trend look
- Relaxed fit

COLORS

23	Team Red
50	Team Navy
90	Team Black
94	Team Steel Grey



2031A617 FRENCH TERRY HOODY
2031A613 FRENCH TERRY JOGGER

U.S. SUGGESTED RETAIL: \$50.00 F0052

\$50.00 F0052

2031A617 SIZES: XS, S, M, L, XL, 2XL 2031A613 SIZES: XS, S, M, L, XL, 2XL

AVAILABLE: AT ONCE

FABRIC: 100% POLYESTER FRENCH TERRY

FEATURES

- French terry fabric provides super soft hand for enhanced comfort
- Mechanical stretch for ease of movement when warming up
- Pull over hoody has Asics logo on arm for ease of embellishment
- Cuffed jogger has wide waistband and external drawcord to provide great fit and trend-right design

COLORS

091	Team Black
098	Team Athletic Grey Heather
051	Team Navy
024	Team Red
044	Team Royal
100	Team White**

*Jogger not available in 001 Team White.
**Available in Youth, see page 104.

TEAM BANK RESERVED



2161A037 FRENCH TERRY CREW

U.S. SUGGESTED RETAIL: \$45.00 F0522

SIZES: XS, S, M, L, XL, 2XL, 3XL

AVAILABLE: 7/1/2019

FABRIC: 100% POLYESTER FRENCH TERRY

FEATURES

- French Terry fabric provides super soft hand for enhanced comfort
- Mechanical stretch for ease of movement when warming up
- Crewneck hoody with kangaroo pocket for storage
- ASICS logo on arm for ease of embellishment

COLORS

90	Black
01	White
94	Steel Grey
23	Red
43	Royal
50	Navy

*Available in Youth, see page 104.

TEAM BANK RESERVED



2031A616 FRENCH TERRY FULL ZIP HOODY

U.S. SUGGESTED RETAIL: \$60.00 F0003

SIZES: S, M, L, XL, 2XL

AVAILABLE: LIMITED TO STOCK

FABRIC: 100% POLYESTER FRENCH TERRY

FEATURES

- French terry fabric provides super soft hand for enhanced comfort
- Mechanical stretch for ease of movement when warming up
- Full zip hoody and pull over hoody have kangaroo pockets

COLORS

091	Team Black
098	Team Athletic Grey Heather
051	Team Navy
024	Team Red
044	Team Royal
100	Team White

*Available in Youth, see page 104.

TEAM BANK RESERVED



2161A055

2161A054

TEAM ESSENTIAL FLEECE HOODY

TEAM ESSENTIAL FLEECE PANT

SIZES: 2 XS, XS, S, M, L, XL, 2XL, 3XL, 4XL

AVAILABLE: AT ONCE

FABRIC: 50% POLYESTER, 45% COTTON, 5% ELASTANE

- FEATURES**
- Relaxed fit
 - Triblend fabric provides super soft hand for enhanced comfort
 - Stretch fabric allows for free range of motion
 - Brushed interior provides warmth

COLORS

90	Black
99	Steel Grey Heather



U.S. SUGGESTED RETAIL: **\$50.00** F0052

\$45.00 F0522

2031A754

TRICOT WARM UP 1/2 ZIP HOODY

U.S. SUGGESTED RETAIL: **\$60.00** F0003

SIZES: XS, S, M, L, XL, 2XL

AVAILABLE: LIMITED TO STOCK

FABRIC: 100% POLYESTER TRICOT

- FEATURES**
- Polyester tricot fabric with mechanical stretch provides warmth, comfort and free range of movement
 - Stylized flatlock body seams
 - On-seam hand pockets for easy storage
 - Hoody has full zip silhouette with mock neck

COLORS

90	Team Black/Team White
94	Team Steel Grey/Team White
50	Team Navy/Team White
23	Team Red/Team White

TEAM BANK RESERVED



2031A755

2031A756

TRICOT WARM UP JACKET

TRICOT WARM UP PANT

U.S. SUGGESTED RETAIL: **\$55.00** F0572

\$50.00 50052

SIZES: XS, S, M, L, XL, 2XL (pant comes in long)

AVAILABLE: LIMITED TO STOCK

FABRIC: 100% POLYESTER TRICOT

- FEATURES**
- Polyester tricot fabric with mechanical stretch provides warmth, comfort and free range of movement
 - Stylized flatlock body seams
 - On-seam hand pockets for easy storage
 - Jacket has full zip silhouette with mock neck
 - Pant has soft exposed interior elastic with internal drawcord, diamond gusset for ease of movement, tapered leg with zip open/closure for trend-right silhouette and easy on/off, and articulated back knee seam for enhanced design

COLORS

90	Team Black/Team Black
94	Team Steel Grey/Team White
50	Team Navy/Team White
23	Team Red/Team White
43	Team Royal/Team White
01	Team White/Team Black

*Pant not available in 43 Team Royal and 01 Team White.

TEAM BANK RESERVED



2031A759 STRETCH WOVEN TRACK TOP
2031A758 STRETCH WOVEN TRACK BOTTOM

U.S. SUGGESTED RETAIL: \$80.00 F0004

\$75.00 F0573

SIZES: XS, S, M, L, XL, 2XL (pant comes in long)

AVAILABLE: AT ONCE

FABRIC: 93% POLYESTER / 7% SPANDEX 4-WAY STRETCH-WOVEN

FEATURES

- Stretch woven fabric provides ultimate comfort for travel and warming up
- DWR provides protection against rain
- Woven track top has half-zip hoody silhouette with color blocking to provide trend-right look
- Woven track bottom has soft elastic waistband with external drawcord, back yoke on waistband with diamond gusset to provide unlimited comfort and range of movement, taper leg silhouette for trend-right consumer, zip closure bottom for ease of movement and easy on/off, and stylized flatlock side seams, false fly and articulated knees to provide a truly enhanced design

COLORS

90	Team Black/Team White
94	Team Steel Grey/Team White
50	Team Navy/Team White
23	Team Red/Team White
43	Team Royal/Team White*
01	Team White/Team Black*

*Pant not available in 43 Team Royal and 01 Team White.

TEAM BANK RESERVED



TF1285 APTITUDE™ 2 RUN PANT

U.S. SUGGESTED RETAIL: \$50.00 F0052

SIZES: S, M, L, XL, 2XL

AVAILABLE: AT ONCE

FABRIC: 87% POLYESTER / 13% SPANDEX FRENCH TERRY

FEATURES

- ASICS® Motion Dry™ Fabric
- Hand pockets
- Tapered leg with zipper
- Asics® logo on thigh
- Gripper elastic at leg opening
- Screening instruction D

COLORS

90	Black
----	-------

TEAM BANK RESERVED



2161A060 POWER POLO

U.S. SUGGESTED RETAIL: \$65.00 F0523

SIZES: XS, S, M, L, XL, 2XL, 3XL, 4XL

AVAILABLE: AT ONCE

FABRIC: 92% POLYESTER / 8% SPANDEX

FEATURES

- Relaxed fit
- Lightweight, stretch fabric provides moisture wicking and free range of motion for ultimate comfort
- Unique placket closure for great visual

COLORS

52	Navy Heather
90	Black
99	Steel Grey Heather



2031A615 SOLID BLOCKED POLO

U.S. SUGGESTED RETAIL: **\$45.00** F0522

SIZES: S, M, L, XL, 2XL

AVAILABLE: AT ONCE

FABRIC: 100% POLYESTER

FEATURES

- 100% Poly fabric provides moisture wicking for faster dry times and greater breathability
- Self collar provides perfect fit and look
- Regular fit ideal for coaches and players alike
- Basic blocked design for ease of embellishment

COLORS

066	Team Neon Orange
090	Team Neon Orange
081	Team Forest Green
028	Team Maroon
050	Team Navy
097	Team Steel Grey Heather
018	Team Pink Glo
023	Team Red
043	Team Royal
094	Team Steel Grey
001	Team White

TEAM BANK RESERVED



2031A614 HEX PRINT POLO

U.S. SUGGESTED RETAIL: **\$50.00** F0052

SIZES: S, M, L, XL, 2XL

AVAILABLE: AT ONCE

FABRIC: 100% POLYESTER

FEATURES

- 100% Poly fabric provides moisture wicking for faster dry times and greater breathability
- Self collar provides perfect fit and look
- Regular fit ideal for coaches and players alike
- Subtle hex print provides enhanced desing without
- Sacraficing embellishment capabilities

COLORS

090	Team Black
097	Team Steel Grey Heather
081	Team Forest Green
028	Team Maroon
050	Team Navy
066	Team Neon Orange
023	Team Red
043	Team Royal
094	Team Steel Grey
001	Team White

TEAM BANK RESERVED



2162A139 WOMEN'S TEAM RAIN JACKET

U.S. SUGGESTED RETAIL: **\$125.00** F0526

SIZES: 2XS, XS, S, M, L, XL, 2XL

AVAILABLE: 7/1/2020

FABRIC: 100% NYLON

FEATURES

- 2.5 layer, durable water proof shell fabric + 3D print on back side
- Critically seam sealed
- Reverse entry hand pocket for easy storage and access to valuables
- Elastic bungee hoody with stopper for easy fit adjustment
- Micro velcro cuff for easy adjustability
- Relaxed fit

Heat transfer recommended. Embroidery not recommended for full water proof functionality.

COLORS

50	Team Navy
90	Team Black
94	Team Steel Grey



2162A138 WOMEN'S ASICS TEAM RAIN PANT

U.S. SUGGESTED RETAIL: **\$125.00** F0526

SIZES: 2XS, XS, S, M, L, XL, 2XL, MT, LT

AVAILABLE: 7/1/2020

FABRIC: 100% NYLON

FEATURES

- 2.5 layer, durable water proof shell fabric + 3D print on back side
- Critically seam sealed
- Auto lock zipper and gator at ankle for easy on/off and water protection
- Reverse entry hand pocket for easy storage and access to valuables
- Elastic bungee waistband with stopper for easy fit adjustment
- Relaxed fit

COLORS

50	Team Navy
90	Team Black
94	Team Steel Grey



2162A140 WOMEN'S THERMOPOLIS WINTER 1/2 ZIP

U.S. SUGGESTED RETAIL: \$80.00 F0004

SIZES: 2XS, XS, S, M, L, XL, 2XL

AVAILABLE: 7/1/2020

FABRIC: 94% POLYESTER, 6% SPANDEX

FEATURES

- Unique FABRIC MIX for enhanced visual
- Fabric 1 provides traditional "Thermopolis" heathered visual, and buttery soft hand feel
- Brushed for warmth
- Fabric 2 provides additional warmth benefits
- 1/2 zip hoody silhouette for modern and trendy look
- Regular fit

COLORS

01	Team White
23	Team Red
43	Team Royal
50	Team Navy
90	Team Black
94	Team Steel Grey



2162A142 WOMEN'S THERMOPOLIS FLEECE CROP TM HOODY

U.S. SUGGESTED RETAIL: \$85.00 F0524

SIZES: 2XS, XS, S, M, L, XL, 2XL

AVAILABLE: 7/1/2020

FABRIC: 85% POLYESTER, 15% SPANDEX

FEATURES

- Unique FABRIC MIX for enhanced visual
- Fabric 1 provides traditional "Thermopolis" heathered visual, and buttery soft hand feel
- Brushed for warmth
- Fabric 2 provides additional warmth benefits
- Traditional pullover hoody silhouette
- Relaxed fit

COLORS

01	Team White
23	Team Red
43	Team Royal
50	Team Navy
90	Team Black
94	Team Steel Grey



2162A143 WOMEN'S THERMOPOLIS TIGHT

U.S. SUGGESTED RETAIL: \$65.00 F0523

SIZES: 2XS, XS, S, M, L, XL, 2XL

AVAILABLE: 7/1/2020

FABRIC: 89% POLYESTER, 11% SPANDEX

FEATURES

- ASICS Thermopolis fabric provides butter soft hand feel, attractive visual and brushed interior for warmth
- Widened waistband for flattering look and enhanced fit
- 7/8 length silhouette provides trendy look
- Tight fit

COLORS

23	Team Red
43	Team Royal
50	Team Navy
90	Team Black
94	Team Steel Grey



2162A141 WOMEN'S THERMOPOLIS FLEECE TM TAPERED PANT

U.S. SUGGESTED RETAIL: \$65.00 F0523

SIZES: 2XS, XS, S, M, L, XL, 2XL

AVAILABLE: 7/1/2020

FABRIC: 85% POLYESTER, 15% SPANDEX

FEATURES

- Unique FABRIC MIX for enhanced visual
- Fabric 1 provides traditional "Thermopolis" heathered visual, and buttery soft hand feel
- Brushed for warmth
- Fabric 2 provides additional warmth benefits
- Jogger silhouette for on trend look
- Regular fit

COLORS

23	Team Red
43	Team Royal
50	Team Navy
90	Team Black
94	Team Steel Grey



2032A544 WOMEN'S FRENCH TERRY HOODY
2032A545 WOMEN'S FRENCH TERRY JOGGER

U.S. SUGGESTED RETAIL: **\$50.00** F0052
\$50.00 F0052

2032A544 SIZES: XS, S, M, L, XL, 2XL 2032A545 SIZES: XS, S, M, L, XL, 2XL

AVAILABLE: AT ONCE

FABRIC: 100% POLYESTER FRENCH TERRY

FEATURES

- French terry fabric provides super soft hand for enhanced comfort
- Mechanical stretch for ease of movement when warming up
- Pull over hoody has Asics logo on arm for ease of embellishment
- Cuffed jogger has wide waistband and external drawcord to provide great fit and trend-right design

COLORS

090	Team Black
097	Team Athletic Grey Heather
050	Team Navy
023	Team Red
043	Team Royal
001	Team White**

*Jogger not available in 001 Team White.
**Available in Youth, see page 104.

TEAM BANK RESERVED



2162A055 WOMEN'S FRENCH TERRY CREW

U.S. SUGGESTED RETAIL: **\$45.00** F0522

SIZES: 2XS, XS, S, M, L, XL, 2XL

AVAILABLE: 7/1/2019

FABRIC: 100% POLYESTER FRENCH TERRY

FEATURES

- French Terry fabric provides super soft hand for enhanced comfort
- Mechanical stretch for ease of movement when warming up
- Crewneck hoody with kangaroo pocket for storage
- ASICS logo on arm for ease of embellishment

COLORS

90	Black
01	White
94	Steel Grey
23	Red
43	Royal
50	Navy

*Available in Youth, see page 104.

TEAM BANK RESERVED



2032A543 WOMEN'S FRENCH TERRY FULL ZIP HOODY

U.S. SUGGESTED RETAIL: **\$60.00** F0003

SIZES: S, M, L, XL, 2XL

AVAILABLE: LIMITED TO STOCK

FABRIC: 100% POLYESTER FRENCH TERRY

FEATURES

- French terry fabric provides super soft hand for enhanced comfort
- Mechanical stretch for ease of movement when warming up
- Full zip hoody and pull over hoody have kangaroo pockets

COLORS

090	Team Black
097	Team Athletic Grey Heather
050	Team Navy
023	Team Red
043	Team Royal
001	Team White

*Available in Youth, see page 104.

TEAM BANK RESERVED



2162A077 WOMEN'S TEAM ESSENTIAL FLEECE HOODY
2162A078 WOMEN'S TEAM ESSENTIAL FLEECE PANT

U.S. SUGGESTED RETAIL: **\$50.00** F0052
\$45.00 F0522

SIZES: 2XS, XS, S, M, L, XL, 2XL, 3XL, 4XL
AVAILABLE: AT ONCE
FABRIC: 50% POLYESTER, 45% COTTON, 5% ELASTANE
FEATURES
• Relaxed fit
• Triblend fabric provides super soft hand for enhanced comfort
• Stretch fabric allows for free range of motion
• Brushed interior provides warmth
COLORS

90	Black
99	Steel Grey Heather



2032A751 WOMEN'S TRICOT WARM UP FULL ZIP HOODY

U.S. SUGGESTED RETAIL: **\$60.00** F0003

SIZES: 2XS, XS, S, M, L, XL, 2XL
AVAILABLE: LIMITED TO STOCK
FABRIC: 100% POLYESTER TRICOT
FEATURES
• Polyester tricot fabric with mechanical stretch provides warmth, comfort and free range of movement
• Stylized flatlock body seams
• On-seam hand pockets for easy storage
• Hoodie has full zip silhouette with mock neck

COLORS

9001	Team Black/Team White
9401	Team Steel Grey/Team White
5001	Team Navy/Team White
2301	Team Red/Team White

TEAM BANK RESERVED



2032A755 WOMEN'S TRICOT WARM UP JACKET
2032A756 WOMEN'S TRICOT WARM UP PANT

U.S. SUGGESTED RETAIL: **\$55.00** F0572
\$50.00 50052

2032A755 SIZES: 2XS, XS, S, M, L, XL, 2XL **2032A756 SIZES:** 2XS, XS, S, ST, M, MT, L, LT, XL, XLT, 2XL, 2XLT
AVAILABLE: LIMITED TO STOCK
FABRIC: 100% POLYESTER TRICOT

FEATURES
• Polyester tricot fabric with mechanical stretch provides warmth, comfort and free range of movement
• Stylized flatlock body seams
• On-seam hand pockets for easy storage
• Jacket has full zip silhouette with mock neck
• Pant has soft exposed interior elastic with internal drawcord, diamond gusset for ease of movement, tapered leg with zip open/closure for trend-right silhouette and easy on/off, and articulated back knee seam for enhanced design

COLORS

9001	Team Black/Team Black
9401	Team Steel Grey/Team White
5001	Team Navy/Team White
2301	Team Red/Team White
4301	Team Royal/Team White*

*Pant not available in 4301 Team Royal.

TEAM BANK RESERVED



2032A757 WOMEN'S STRETCH WOVEN TRACK TOP
2032A754 WOMEN'S STRETCH WOVEN TRACK PANT

U.S. SUGGESTED RETAIL: \$80.00 F0004

\$75.00 F0573

SIZES: 2XS, XS, S, M, L, XL, 2XL

AVAILABLE: AT ONCE

FABRIC: 93% POLYESTER / 7% SPANDEX 4-WAY STRETCH-WOVEN

FEATURES

- Stretch woven fabric provides ultimate comfort for travel and warming up
- DWR provides protection against rain
- Woven track top has half-zip hoody silhouette with color blocking to provide trend-right look
- Woven track bottom has soft elastic waistband with external drawcord, back yoke on waistband with diamond gusset to provide unlimited comfort and range of movement, taper leg silhouette for trend-right consumer, zip closure bottom for ease of movement and easy on/off, and stylized flatlock side seams, false fly and articulated knees to provide a truly enhanced design
- Woven track pant includes white side panel, not shown on-model image

COLORS

9001	Team Black/Team White
9401	Team Steel Grey/Team White
5001	Team Navy/Team White
2301	Team Red/Team White
4301	Team Royal/Team White*
0190	Team White/Team Black*

*Pant not available in 4301 Team Royal and 0190 Team White.

TEAM BANK RESERVED



TF1286 WOMEN'S APTITUDE™ 2 RUN PANT

U.S. SUGGESTED RETAIL: \$50.00 F0052

SIZES: XS, S, M, L, XL

AVAILABLE: AT ONCE

FABRIC: 87% POLYESTER / 13% SPANDEX FRENCH TERRY

FEATURES

- ASICS® Motion Dry™ Fabric
- Hand pockets
- Tapered leg with zipper
- Asics® logo on thigh
- Gripper elastic at leg opening
- Screening instruction D

COLORS

90	Black
50	Navy

TEAM BANK RESERVED



ASICSMOTIONDRY



2032A542 WOMEN'S HEX PRINT POLO

U.S. SUGGESTED RETAIL: \$50.00 F0052

SIZES: XS, S, M, L, XL, 2XL

AVAILABLE: AT ONCE

FABRIC: 100% POLYESTER

FEATURES

- 100% Poly fabric provides moisture wicking for faster dry times and greater breathability
- Self collar provides perfect fit and look
- Regular fit ideal for coaches and players alike
- Subtle hex print provides enhanced desing without sacraficing embellishment capabilities

COLORS

081	Team Forest Green
028	Team Maroon
018	Team Pink Glo
090	Team Black
097	Team Steel Grey Heather
050	Team Navy
023	Team Red
043	Team Royal
094	Team Steel Grey
001	Team White

TEAM BANK RESERVED



NEW

2174A008 YOUTH FRENCH TERRY CREW

U.S. SUGGESTED RETAIL: \$40.00 F0002

SIZES: S, M, L, XL

AVAILABLE: 1/1/2021

FABRIC: 100% POLYESTER FRENCH TERRY

FEATURES

- French Terry fabric provides super soft hand for enhanced comfort
- Mechanical stretch for ease of movement when warming up
- Crewneck hoody with kangaroo pocket for storage
- ASICS logo on arm for ease of embellishment



COLORS

90	Black
01	White
94	Steel Grey
23	Red
43	Royal
50	Navy

TEAM BANK RESERVED

NEW

2174A005 YOUTH FRENCH TERRY FZ HOODY
2174A006 YOUTH FRENCH TERRY HOODY

U.S. SUGGESTED RETAIL: \$50.00 F0052

\$45.00 F0522

SIZES: S, M, L, XL

AVAILABLE: 1/1/2021

FABRIC: 100% POLYESTER FRENCH TERRY

FEATURES

- French Terry fabric provides super soft hand for enhanced comfort
- Mechanical stretch for ease of movement when warming up
- Kangaroo pocket for storage
- ASICS logo on arm for ease of embellishment



COLORS

90	Black
94	Steel Grey
23	Red
43	Royal
50	Navy
100	White



*100 White is FZ Only.

TEAM BANK RESERVED

NEW

2174A007 YOUTH FRENCH TERRY JOGGER

U.S. SUGGESTED RETAIL: \$45.00 F0522

SIZES: YS-YXL

AVAILABLE: 1/1/2021

FABRIC: 100% POLYESTER FRENCH TERRY

FEATURES

- French Terry fabric provides super soft hand for enhanced comfort
- Mechanical stretch for ease of movement when warming up
- Wide waistband and external drawcord to provide great fit and trend right design



COLORS

091	Black
098	Steel Grey
024	Red
044	Royal
051	Navy

TEAM BANK RESERVED

FOOTWEAR/
ACCESSORIES



1011A844 MEN'S GEL-PULSE 12

U.S. SUGGESTED RETAIL: **\$90.00** F0594

SIZES: 7-13, 14, 15, 16

AVAILABLE: AT ONCE

FEATURES

- Rearfoot GEL technology cushioning system
- Removable sock liner
- Ortholite sockliner

COLORS

001	Black/White
020	Sheet rock/graphite grey



1011A845 MEN'S GEL-PULSE 12 WIDE

U.S. SUGGESTED RETAIL: **\$90.00** F0594

SIZES: 7-13, 14, 15, 16

AVAILABLE: AT ONCE

FEATURES

- Rearfoot GEL technology cushioning system
- Removable sock liner
- Ortholite sockliner

COLORS

001	Black/White
-----	-------------



1012A724 WOMEN'S GEL-PULSE 12

U.S. SUGGESTED RETAIL: **\$90.00** F0594

SIZES: 5-12

AVAILABLE: AT ONCE

FEATURES

- Rearfoot GEL technology cushioning system
- Removable sock liner
- Ortholite sockliner

COLORS

001	Black/White
021	Glacier Grey/Metropolis



1012A727 WOMEN'S GEL-PULSE 12 WIDE

U.S. SUGGESTED RETAIL: **\$90.00** F0594

SIZES: 5-12

AVAILABLE: AT ONCE

FEATURES

- Rearfoot GEL technology cushioning system
- Removable sock liner
- Ortholite sockliner

COLORS

001	Black/White
-----	-------------



NEW

3163A218 TEAM ASICS BACKPACK

U.S. SUGGESTED RETAIL: \$60.00 F0003

- SIZES:** One Size
- AVAILABLE:** 1/1/2021
- FABRIC:** 100% Polyester Woven
- FEATURES**
- Heathered front for added visual. Wider space for decoration
 - 2 large organizational compartments with ASICS embossed inside panel. Larger org compartment is stitched 2 inches above base so laptop won't hit bottom. Fits 15" laptop
 - Front pocket large enough for phone and valuables
 - TPU overlay is water PROOF to protect your valuables from weather
 - TPU fabric throughout side and bottom panel is weather resistant and super durable
 - 2 water bottle pockets with reinforced elastic binding for secure storage during movement



23	Red Heather
43	Royal Heather
50	Navy Heather
90	Black Heather
94	Steel Grey Heather

ZR3433 UTILITY BACKPACK

U.S. SUGGESTED RETAIL: \$60.00 F0003

- SIZES:** ONE SIZE
- AVAILABLE:** AT ONCE
- FABRIC:**
- FEATURES**
- Large main pocket with compartments for easy storage
 - Front pocket
 - Felt lined zipper pocket
 - Adjustable front shoulder straps



90	Black
----	-------

ZR3435 EGDE II DUFFLE MD

U.S. SUGGESTED RETAIL: \$50.00 F0052

- SIZES:** 23" (L) X 10.5" (W) X 10" (D)
- AVAILABLE:** AT ONCE
- FABRIC:** 100% POLYESTER 600D
- FEATURES**
- Large capacity center compartment
 - Luggage pull strap
 - 2 Sided zipper pockets
 - Front outside zipper pocket
 - Padded ajustable shoulder strap
 - Wet pocket with mesh panel
 - Room for your team logo

2390	Red/Black
4390	Royal/Black
5090	Navy/Black
9090	Black/Black
9490	Steel Grey/Black



ZR3427 GEAR BAG 2.0

U.S. SUGGESTED RETAIL: \$40.00 F0002

SIZES: 23.5" (L) X 10.5" (W) X 10" (D)

AVAILABLE: AT ONCE

FABRIC: 100% POLYESTER 420D

FEATURES

- Multi sport carry-all
- Drawcord closure with toggle at top opening
- Side mesh compartment works great as a water bottle holder
- Front zipper pocket allows for essential storage
- Side small zipper pocket makes it easy for access
- Adjustable padded shoulder straps with Asics logo carabiner
- Light color front panel can be sublimated or digital printed

COLORS

4390	Royal/Black
2390	Red/Black
5090	Navy/Black
9090	Black/Black
9490	Steel Grey/Black
9097	Black/Athletic Grey
5097	Navy/Athletic Grey
2397	Red/Athletic Grey

TEAM BANK RESERVED



ZR1941 SANCTION CINCH SACKPACK

U.S. SUGGESTED RETAIL: \$25.00 F0521

SIZES: 15" (W) X 19" (H) X 7" (D)

AVAILABLE: AT ONCE

FABRIC: 100% 450D POLYESTER

FEATURES

- Reinforced base
- Media port
- Front zippered pocket
- Two mesh side pockets
- Total volume capacity: 6.3L

COLORS

90	Black
23	Red
43	Royal
50	Navy



ZR1127 TEAM BACKPACK

U.S. SUGGESTED RETAIL: \$34.00 F0071

SIZES: ONE SIZE

AVAILABLE: AT ONCE

FABRIC:

FEATURES

- Large compartment pocket allows for a size 5 soccer ball or volleyball storage
- Front zipper pocket with organizer and key fob
- Side mesh pocket able to accommodate up to 32 oz. water bottle
- Adjustable padded straps
- ASICS spiral zipper pull
- Large panel for team branding

COLORS

9090	Black/Black
2390	Red/Black
4390	Royal/Black
5090	Navy/Black

TEAM BANK RESERVED



ZR3177 TM CINCH II BAG

U.S. SUGGESTED RETAIL: \$12.00 F0060

SIZES: 14.5" (W) X 18.25" (H) X 5" (D)

AVAILABLE: AT ONCE

FABRIC: 430D POLYESTER

FEATURES

- Large main compartment
- Small inside pocket for essential storage and media port
- Large outside pocket for easy access of items
- Soft, durable pull cord with Asics® sternum clip for adjustability
- Lots of team color options with plenty of room for embellishing your team logo

COLORS

9023	Black/Red
9043	Black/Royal
9050	Black/Navy
9018	Black/Pink Glo
9055	Black/Atomic Blue
9063	Black/Purple
9090	Black/Black



SOCK SIZING CHART

SOCK SIZE	U.S. MEN'S SHOE SIZE	U.S. WOMEN'S SHOE SIZE	EUROPEAN SHOE SIZE
XS	–	4 – 5.5	34 – 36
S	–	6 – 7.5	37 – 39
M	7 – 9	8 – 9.5	40 – 42
L	9.5 – 11.5	10+	42 – 44
XL	12+	–	45 – 47

ZK1107 ALL SPORT - FIELD SOCK

U.S. SUGGESTED RETAIL: \$11.00 F0550

SIZES: S, M, L, XL

AVAILABLE: AT ONCE

FABRIC: 85% NYLON / 11% POLYESTER /
2% RUBBER / 2% SPANDEX

FEATURES

- Stretch fit for durability
- Integrated ribbed ankle and arch support
- Linking toe construction which eliminates bulky toe seam
- Can accommodate a soccer or field hockey shin guard

COLORS

01	White
50	Navy
90	Black



ZK3455 KONDO III KNEE HIGH

U.S. SUGGESTED RETAIL: \$16.00 F0080

SIZES: S, M, L

AVAILABLE: AT ONCE

FABRIC: 68% NYLON / 28% POLYESTER / 4% SPANDEX

FEATURES

- Structured arch and ankle support holds sock in place and prevents moving and bunching
- Reinforced heel and toe for added durability
- Seamless toe seam for maximum comfort without irritation or chafing
- Strategic cushioning with integrated mesh for shock absorption in high-impact areas
- Moisture management construction keeps feet dry and comfortable

COLORS

90	Black
01	White



ZK1103 OLD SCHOOL KNEE HIGH

U.S. SUGGESTED RETAIL: \$10.00 F0050

SIZES: S, M, L, XL

AVAILABLE: AT ONCE

FABRIC: 96% NYLON / 4% SPANDEX

FEATURES

- Cushioned sole for shock absorption in high-impact areas
- Seamless toe seam for maximum comfort without irritation or chafing
- 1X1 ribbed knee-high length for support in the calf area
- Soft moisture management construction keeps feet dry and comfortable
- Sporty stripes add athletic appeal

COLORS

0123	White/Red
0150	White/Navy
9001	Black/White



ZK2000 ASICS STRIPE CREW

U.S. SUGGESTED RETAIL: \$8.00 F0040

SIZES: S, M, L, XL

AVAILABLE: AT ONCE

FABRIC: 59% POLYESTER / 23% SPANDEX / 18% NYLON

FEATURES

- Footstrike cushioning
- Anatomical left and right provides superior fit and cushioning
- Seamless toe seam construction for maximum comfort without irritation
- Moisture management construction keeps feet dry and comfortable
- Tiger stripes adds a unique athletic appeal

COLORS

9001	Black/White
9018	Black/Pink Glo



ZK1454 TEAM CREW SOCK

U.S. SUGGESTED RETAIL: \$7.00 F0530

SIZES: S, M, L, XL

AVAILABLE: AT ONCE

FABRIC: 93% POLYESTER / 5% RUBBER / 2% SPANDEX

FEATURES

- Polyester construction provides durability while keeping feet dry and comfortable
- Fully cushioned sole for shock absorption in high impact areas
- Hand linked toe seam for maximum comfort without irritation and chafing
- Multiple performance sock for all sports

COLORS

90	Black*
01	White*
23	Red*
50	Navy
43	Royal
18	Pink Glo
55	Atomic Blue
72	Neon
9023	Black/Red
9043	Black/Royal
9094	Black/Steel

TEAM BANK RESERVED



FOOTWEAR GLOSSARY

AHAR® Technology Acronym for ASICS High Abrasion Rubber. Placed in critical areas of the outsole for exceptional durability.

AmpliFoam™ Midsole Engineered to maintain durability at softer densities, providing better flexibility, comfort, and platform adaptability ideal for natural running.

Anti-Gravel Tongue Gusseted construction prevents debris from entering the shoe.

APMA Seal of Acceptance Designated shoes have the American Podiatric Medical Association (APMA) Seal of Acceptance.

Biomorphic Fit® Upper Stretch material strategically placed on the upper helps to reduce buckling and the potential for irritation.

Ortholite® Lasting This lasting material features plush underfoot comfort while providing excellent moisture management, high level breathability, and antimicrobial properties.

Ortholite® Sockliner Provides cushioning performance and anti-microbial properties for a cooler, drier, healthier environment.

Ortholite® X-40 Sockliner This premium sockliner features higher rebound properties while providing excellent moisture management, high-level breathability, and antimicrobial properties.

Discrete Eyelets Independently placed eyelets disperse lace tension, creating a customized fit environment and enhanced upper comfort.

Discrete Heel Unit Takes the Impact Guidance System (I.G.S®) to a new level by creating our highest degree of shock attenuation and stability.

DuoMax® Support System A dual-density midsole system positioned to enhance support and stability.

DuoSole® Outsole Reduces weight and enhances flexibility while maintaining traction and durability.

DuraSponge® Outsole A blown AHAR® rubber compound for enhanced cushioning and durability in the forefoot.

Dynamic DuoMax™ Support System This evolution of DuoMax® system enhances stability and support, with reduced weight and increased platform comfort.

Elastic Laces A classic triathlon feature allowing a runner to put the shoe on quickly, easily, and securely.

Extended Forefoot DuoMax® Provides unrivaled support to meet the needs of late-stage and midfoot overpronators.

Extended Rearfoot GEL® Technology Cushioning The rearfoot GEL® technology cushioning extends further forward under the lateral midfoot, increasing shock attenuation and protection for neutral runners.

Flexion Fit® Upper Proprietary upper which provides form-fitting comfort without sacrificing support.

FluidAxis® Midsole Technology Anatomically correct deep flex grooves have been aligned to the joints of the foot. This innovative construction enables the shoe to recognize, adapt, and respond to the athlete's exact load and positional change from first impact to toe-off.

FluidRide™ Midsole provides the ultimate combination of bounce back and cushioning properties with reduced weight and exceptional durability.

FluidFit® Upper Technology combines multi-directional stretch mesh with stretch reinforcements that adapt to the athlete's foot, creating a truly customized glove-like fit.

Forefoot GEL® Technology Cushioning System Enhances shock attenuation during propulsion.

fuzeGEL™ Midsole Cushioning technology newest to ASICS made from the fusion of GEL® property and foam creates lightweight adaptable comfort, tuned to provide rearfoot shock absorption that shifts to forefoot bounce back.

Gender Specific Cushioning Women's models feature a lower-density top layer in the midsole, allowing female athletes to better enjoy the benefits of midsole compression.

Glow-in-the-Dark Print Glow-in-the-Dark print provides added visibility in low light conditions.

Glow-in-the-Dark GEL® Technology Cushioning Glow-in-the-Dark GEL® technology cushioning provides added visibility in low light conditions.

GORE-TEX® Upper Waterproof and breathable upper designed to protect the foot during extreme weather conditions.

Guidance Line® Midsole Technology Vertical flex groove decouples the tooling along the line of progression for enhanced gait efficiency.

Guidance Trusstic System® Technology This Trusstic System® version integrates Guidance Line® construction for enhanced gait efficiency while providing midfoot structural integrity.

Heel Clutching System™ Technology Exoskeletal heel counter provides improved support and creates improved heel fitting environment.

I.G.S® (Impact Guidance System) Technology (Multi-Sports) Linked, category-specific componentry that enhances the foot's natural gait.

I.G.S® (Impact Guidance System) Technology (Running) ASICS design philosophy that employs linked componentry to enhance the foot's natural gait from heel strike to toe-off.

Lace Garage™ Technology Pocket enables the laces to be tucked in and unexposed.

Magic Sole™ Outsole Vented midsole and outsole minimizes weight and maximizes breathability.

Maximum Support Last Providing more depth and width throughout the mid- and forefoot, this accommodating last is ideal for athletes with higher volume feet or who wear orthotics.

MONO-SOCK® Fit System An elastic internal sleeve which replaces a traditional tongue providing a "sock-like" fit.

Natural33™ Last Mimicking the shape of the foot, this anatomically shaped last provides a secure heel fit and an ample toe box that allows the toes to splay.

Plus 3® Midsole Technology 3mm of additional height on women's models helps relieve achilles tension.

Perforated Sockliner Upper Technology Optimizes moisture drainage and improves breathability.

PlasmaGuard™ Upper Technology Your shoes are protected from rain and mud without the loss of breathability and flexibility through PlasmaGuard™, an innovative coating technology patented by Europlasma.

Propulsion Trusstic® Technology Mimics connective tissue in the foot by creating tension as foot enters propulsion stage.

Racing Specific Last Built on ASICS' racing shoe last.

Rearfoot and Forefoot GEL® Technology Cushioning Systems Attenuates shock during impact and toe-off phases, and allows movement on multiple planes as the foot transitions through the gait cycle.

Rearfoot GEL® Technology Cushioning System Attenuates shock during impact phase and allows for a smooth transition to midstance.

Reflectivity Contains reflective materials designed to enhance visibility during low-light hours.

Reinforced Vamp Vamp mesh durability is increased by the addition of a thin, seamless underlay.

Removable Sockliner A sockliner which can be removed to accommodate a medical orthotic.

Removable Spikes Allows the athlete to customize spike configuration and replace worn elements.

Rock Protection Plate Provides protection against stone bruises.

Seamless Construction The use of seamless materials reduces the potential for irritation and friction caused by traditional stitches and seams.

Solid Rubber Outsole Provides enhanced durability and traction.

Solyte® Midsole Material A lighter weight midsole compound than ASICS' standard EVA and SpEVA®. Also features enhanced cushioning and durability.

SpEVA® 45 Lasting Employs 45 degree Solyte® lasting material for a soft platform feel.

SpEVA® 55 Lasting Employs 55 degree Solyte® lasting material for a soft but stable platform feel.

SpEVA® 65 Lasting Employs 65 degree Solyte® lasting material for a firmer, more stable platform feel.

SpEVA® Midsole Material Improves bounce-back characteristics and decreases midsole breakdown.

Trail Specific Outsole Reversed lugs provide uphill and downhill traction on all types of terrain.

Trusstic System® Technology Reduces the weight of the sole unit while retaining the structural integrity of the shoe.

WET GRIP® Outsole An outsole made from a special blend of organic and non-organic components, designed to enhance traction even on wet surfaces.

Youth-Specific Cushioning Lower-density midsole material allows youth athletes to better enjoy the benefits of midsole compression.

ACCESSORIES ICONS



VIP Very Important Product



CSI Committed Stock Inventory



APMA Doctor Approved Style



EMO Enhanced Margin Opportunity



ASICS America Corporation
80 Technology Drive
Irvine • CA 92618 • U.S.A.
(800) 333-8404 • asics.com

© 2020 ASICS America Corporation
All rights reserved.
Prices and specifications subject to
change without notice.



The stripe design featured on
the sides of ASICS® shoes is a
trademark of ASICS Corporation
and is a registered trademark in
most countries of the world.

SARAH HALL

2019 Highlights:

1st Place USATF 10k Championships
1st Place USATF 20k Championships
2nd Place USATF ½ Marathon Championships
2nd Place USATF 25k Championships
5th Place Berlin Marathon
PB's:
5k - 15:33 (2009)
10k - 32:14 (2018)
½ Marathon - 1:08:58 (2020)
Marathon - 2:22:16 (2019)