

AXE



2021 SEASON



NATIONAL SALES MANAGER

SALES SUPPORT

FOR CANADA ORDERS

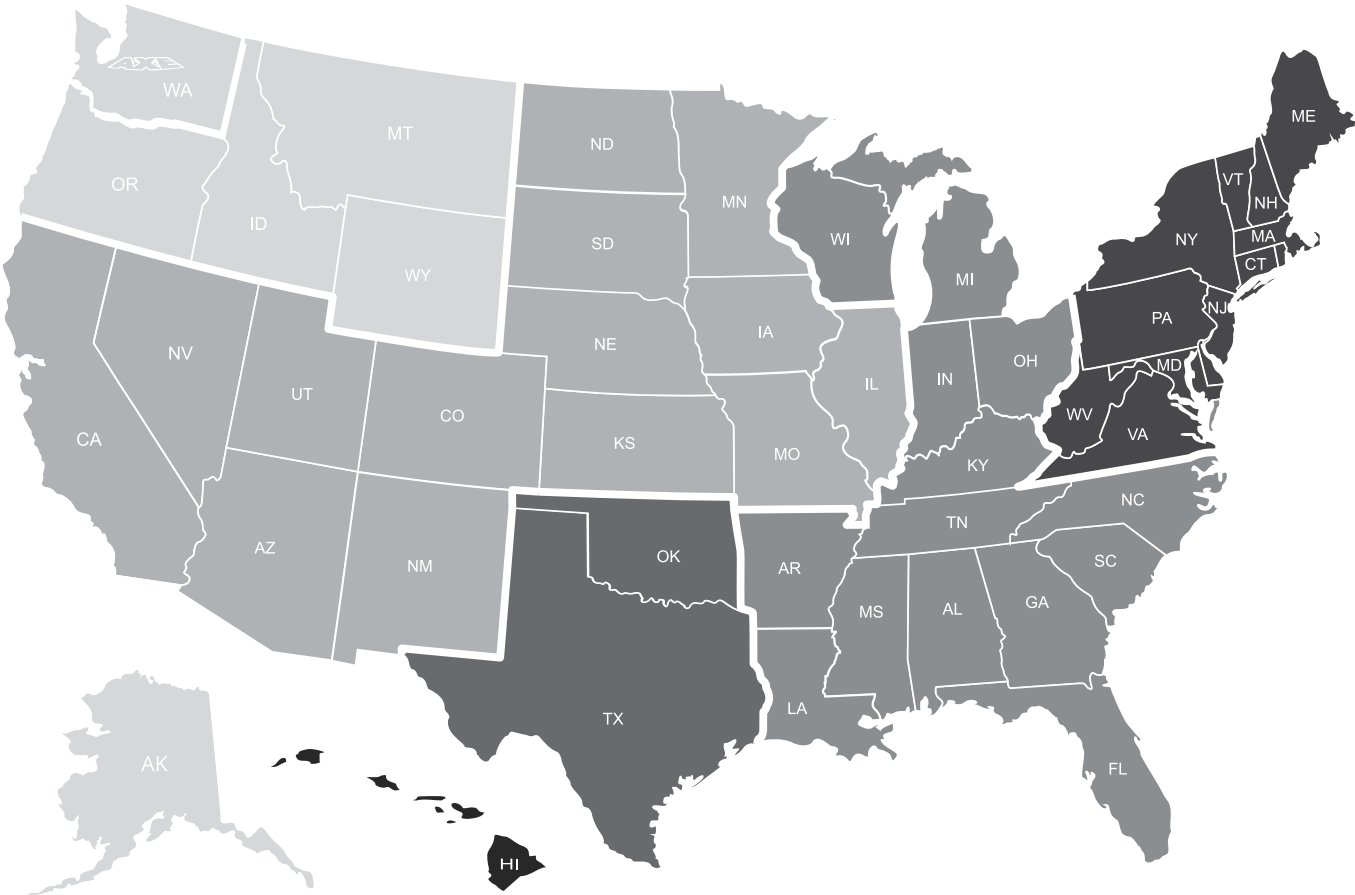
Jerry Hink 253-250-6975 | jhink@badensports.com

Sam Drake 253-883-5163 | sam@axebat.com

Jon Konigsberg 514-341-0206 | canada@axebat.com

REPS BY REGION

AK, ID, MT, OR, WA, WY	AZ, CA, CO, IA, IL, KS, MN, MO, NE, ND, NM, NV, SD, UT	OK, TX
Brandon Williams 425-757-3247 bwilliams@badensports.com	Branden Berry 858-692-5554 branden@axebat.com	Matt Nutt 682-201-4813 mnutt@badensports.com
AL, AR, FL, GA, IN, KY, LA, OH, MI, MS, NC, SC, TN, WI	CT, DC, DE, MA, MD, ME, NH, NJ, NY, PA, RI, WV, VA, VT	HI
Jake Perlmutter 678-634-3799 jake@axebat.com	Jeff Simon 484-888-3331 jeffs@badensports.com	Todd Tice 253-883-5165 toddt@badensports.com



CONTENTS

BBCOR

pg. 5

USA BASEBALL

pg. 8

USSSA BASEBALL

pg. 12

TEE BALL

pg. 14

TRAINERS

pg. 15

WOOD

pg. 17

COMPOSITE WOOD

pg. 20

FASTPITCH

pg. 22

SLOWPITCH

pg. 24

GEAR

pg. 25



BUILT FOR YOUR SWING

AXE® HANDLE

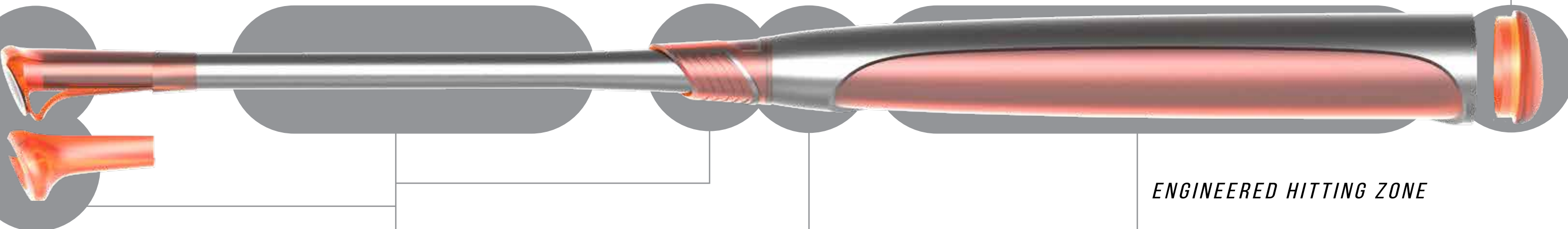
Our patented handle unlocks the full potential of your swing. Newly refined for 2021 across most categories, our second-generation Axe Handle provides an even better connection and fit, so you can swing faster with more control every time up. For more whip and freedom, try our Power Handle.”

- ALL MODELS

HYPERWHIP™ END CAP

Our new sleek design and lighter carbon-fiber construction saves even more weight at the tip of the bat for a faster, more efficient swing and larger barrel.

- MOST NON-WOOD MODELS



1-PIECE

Our one-piece, premium alloy bats come ready to perform to the top of the allowable limit with a barrel that never needs to be rotated.

- ELITE ONE | ORIGIN | HERO | DANIELLE LAWRIE

2-PIECE

Our two-piece composite and hybrid bats pair our hottest barrels with our fastest-swinging composite handle for more whip, speed, and confidence through the zone.

- AVENGE | ELITE

VIBRATION CANCELING SYSTEM™

Our three-point VCS works in tandem to reduce and stop vibration before it reaches your hands, giving you more comfort and confidence at the plate.

ENERGY ABSORPTION COLLAR

An energy-absorbing elastomer collar is strategically placed at the connection point where vibrations transfer from the barrel to the handle.

- AVENGE | ELITE

FLEX HANDLE

Our lightweight composite handle is optimized for performance, whip, and comfort.

- AVENGE | ELITE

ENDOGRID™

Vibration-reducing elastomer, built into the Axe Handle, provides the last line of defense by buffering the bottom hand from stings.

- AVENGE | ELITE | ELITE ONE | ORIGIN

CHARGED CARBON™

Our most advanced carbon composite utilizes a complex polymer matrix to keep individual layers thin and hot without sacrificing durability, meaning your barrel can perform longer and closer to the allowable limit.

- AVENGE | AVENGE ONE | AVENGE LITE

MX8™ ALLOY

Our strongest alloy yet undergoes a special heat treatment to increase its strength and allow it to flex without denting or cracking.

- ELITE | ELITE ONE | ELEMENT

LP1™ ALLOY

Advanced-strength alloy comes ready to hit, with performance and durability to last the lifetime of your bat.

- ORIGIN | HERO | DANIELLE LAWRIE

ENGINEERED HITTING ZONE

POWER GAP BARREL

Our newest and most responsive composite barrel for softball rides on a thin air gap that acts as both a launching pad and a governor, ensuring better performance and harder hits no matter where you make contact.

- AVENGE FASTPITCH | AVENGE SLOWPITCH

TRI-FLEX BARREL

Our most trusted composite barrel uses two C-shaped slip planes to mimic the performance of a thin-wall bat while maintaining the strength and durability elite hitters require.

- AVENGE USSSA BASEBALL | AVENGE SLOWPITCH

VARIABLE LAYER

Our precise, composite-trimming technique removes material from both ends of the bat for a faster, more balanced swing and a lighter construction.

- AVENGE BBCOR, USA & USSSA

VARIABLE WALL

Every millimeter of our variable-wall alloy barrels is manufactured and tuned for optimal performance and speed.

- ELITE BBCOR & USA | ELITE ONE BBCOR & USA

PROVEN PERFORMANCE



MAX BAT SPEED



MORE CONTROL
THROUGH THE ZONE



HARDER HITS,
MORE OFTEN



FIT FOR YOUR SWING



BUILDING THE WORLD'S BEST BAT FOR YOUR SWING

Now available with Power Axe Handles

CHOOSE THE HANDLE THAT'S RIGHT FOR YOU

STANDARD

Our most popular handle for all swing types, featuring a flat, full-length back side for more control and a deeper connection through your palm.

SPEED + CONTROL

- Stay on plane longer
- Get to the ball faster
- More control and adjustability

POWER AXE

Our newest handle for high-level power hitters, featuring a slightly rounded back side for more whip and freedom through the zone.

SPEED + POWER

- Release the barrel faster
- Get more extension
- More whip and freedom

AVENGE -3



L140H | 2-5/8" DIAMETER | 31/28 32/29 33/30 34/31

- 2-piece composite construction
- Variable layer Charged Carbon barrel - our largest and most balanced for BBCOR
- Lightweight composite handle for more whip and less vibration
- Axe Handle for speed + control
- Vibration-canceling VCS connection piece
- Endogrid technology for less bottom-hand vibration
- HyperWhip Composite Cap
- 1-year limited warranty



L140H-BJ | 2-5/8" DIAMETER | 32/29 33/30

- Also available with Power Axe Handle for speed + power

ELITE -3



L130J | 2-5/8" DIAMETER | 30/27 31/28 32/29 33/30 34/31

- 2-piece hybrid construction
- Variable wall MX8 Alloy barrel
- Lightweight composite handle for more whip and less vibration
- Second-gen Axe Handle for more speed, control + comfort
- Vibration-canceling VCS connection piece
- Endogrid technology for less bottom-hand vibration
- HyperWhip Composite Cap
- 1-year limited warranty

LIMITED EDITION



L130J-PWR | 2-5/8" DIAMETER | 32/29 33/30 34/31

- Also available with Power Axe Handle for speed + power

LIMITED EDITION

ELITE -3



L130H | 2-5/8" DIAMETER | 30/27 31/28 32/29 33/30 34/31

- 2-piece, balanced hybrid construction
- Variable wall MX8 Alloy barrel
- Lightweight composite handle for more whip and less vibration
- Axe Handle for speed + control
- Vibration-canceling VCS connection piece
- Endogrid technology for less bottom-hand vibration
- HyperWhip Composite Cap
- 1-year limited warranty



L130H-BJ | 2-5/8" DIAMETER | 32/29 33/30

- Also available with Power Axe Handle for speed + power

ELITEONE -3



L137J | 2-5/8" DIAMETER | 30/27 31/28 32/29 33/30 34/31

- 1-piece alloy construction
- Variable wall MX8 Alloy barrel
- Second-gen Axe Handle for more speed, control + comfort
- Endogrid technology for less bottom-hand vibration
- HyperWhip Composite Cap
- 1-year limited warranty

LIMITED EDITION



L137J-PWR | 2-5/8" DIAMETER | 32/29 33/30 34/31

- Also available with Power Axe Handle for speed + power

LIMITED EDITION

ELITEONE -3



L137H | 2-5/8" DIAMETER | 30/27 31/28 32/29 33/30 34/31

- 1-piece, balanced alloy construction
- Variable wall MX8 Alloy barrel
- Axe Handle for speed + control
- Endogrid technology for less bottom-hand vibration
- HyperWhip Composite Cap
- 1-year limited warranty





AVENGE -10



L142J | 2-5/8" DIAMETER | 28/18 29/19 30/20 31/21 32/22

- 2-piece composite construction
- Variable layer Charged Carbon barrel - our largest and most balanced for USA Baseball
- New Youth Axe Handle for more speed, control + comfort
- Vibration-canceling VCS connection piece
- Endogrid technology for less bottom-hand vibration
- HyperWhip Composite Cap
- 1-year limited warranty

AVENGE -10



L142H | 2-5/8" DIAMETER | 28/18 29/19 30/20 31/21 32/22

- 2-piece composite construction
- Variable layer Charged Carbon barrel - our largest and most balanced for USA Baseball
- Lightweight composite handle for more whip and less vibration
- Axe Handle for speed + control
- Vibration-canceling VCS connection piece
- Endogrid technology for less bottom-hand vibration
- HyperWhip Composite Cap
- 1-year limited warranty

AVENGEONE -10



L164H | 2-5/8" DIAMETER | 28/18 29/19 30/20 31/21

- 1-piece composite construction
- Variable layer Charged Carbon barrel
- Axe Handle for speed + control
- Endogrid technology for less bottom-hand vibration
- HyperWhip Composite Cap
- 1-year limited warranty

ELITE -5



L134H | 2-5/8" DIAMETER | 30/25 31/26 32/27

- 2-piece hybrid construction
- Variable wall MX8 Alloy barrel
- Lightweight composite handle for more whip and less vibration
- Axe Handle for speed + control
- Vibration-canceling VCS connection piece
- Endogrid technology for less bottom-hand vibration
- HyperWhip Composite Cap
- 1-year limited warranty

ELITEONE -8, -10



L139H | 2-5/8" DIAMETER | -8: 28/20 29/21 30/22 31/23 32/24

L185H | 2-5/8" DIAMETER | -10: 26/16* 27/17* 28/18* 29/19 30/20 31/21 32/22

- 1-piece alloy construction
- Variable wall MX8 Alloy barrel
- Axe Handle for speed + control
- Endogrid technology for less bottom-hand vibration
- HyperWhip Composite Cap
- 1-year limited warranty

*26" & 27" L185H have a 2 1/2" diameter barrel

**26"-28" do not have Endogrid technology in the handles

ORIGIN -8



L135H | 2-5/8" DIAMETER | 29/21 30/22 31/23

- 1-piece alloy construction
- LP1 Alloy barrel with Engineered Hitting Zone
- Axe Handle for speed + control
- HyperWhip End Cap
- 1-year limited warranty

ELITEONE -11



L192J | 2-1/2" DIAMETER | 26/15 27/16 28/17 29/18 30/19 31/20

- 1-piece alloy construction
- Variable wall MX8 Alloy barrel
- New Youth Axe Handle for more speed, control + comfort
- Endogrid technology for less bottom-hand vibration
- HyperWhip Composite Cap
- 1-year limited warranty

HERO -11



L196J | 2-1/2" DIAMETER | 26/15 27/16 28/17 29/18 30/19 31/20

- 1-piece alloy construction
- LP Alloy barrel with Engineered Hitting Zone
- New Youth Axe Handle for more speed, control + comfort
- HyperWhip Composite Cap
- 1-year limited warranty

NEW TECH

HYPERWHIP™ END CAP

Upgraded look and an improved carbon-fiber construction make the newly designed HyperWhip End Cap lighter and faster than ever. The sleeker design enhances the weight-saving performance benefits of the angled profile, while also reducing the likelihood of mishits going into fair play off the end cap.



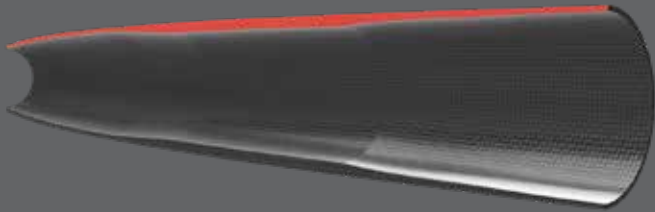
POWER GAP

Power Cap builds on our experience developing bats with golf club-like hitting faces. It uses a thin air gap, situated between a double-wall construction, as both a spring and a governor to ensure better performance and harder hits along the full length of the barrel.



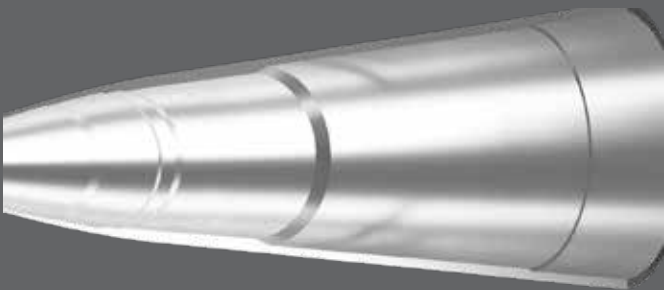
VARIABLE LAYER COMPOSITE

Our new composite trimming technique removes material more precisely, reducing weight at both ends of the barrel for a faster swing, larger sweet spot, and lighter construction.



VARIABLE WALL ALLOY

Advanced manufacturing processes allow us to machine every millimeter of our alloy barrels to the optimal depth for performance and speed.





AVENGE PRO -8, -10



L173J / L148J | 2-3/4" DIAMETER | -8: 30/22 31/23 32/24 | -10: 27/17 28/18 29/19 30/20 31/21

- 2-piece composite construction
- Variable-layer, Charged Carbon+ Blastwall barrel
- New Youth Axe Handle for more speed, control + comfort
- Vibration-canceling VCS connection piece
- Endogrid technology for less bottom-hand vibration
- HyperWhip Composite Cap
- 1-year limited warranty
- New USSSA NTS Stamp

AVENGE -10



L148H | 2-3/4" DIAMETER | -10: 27/17 28/18 29/19 30/20 31/21

- 2-piece composite construction
- Variable layer, Charged Carbon Tri-Flex barrel
- Lightweight composite handle for more whip and less vibration
- Axe Handle for speed + control
- Vibration-canceling VCS connection piece
- Endogrid technology for less bottom-hand vibration
- HyperWhip Composite Cap
- 1-year limited warranty

ELITEONE -10



L143H | 2-3/4" DIAMETER | 28/18 29/19 30/20 31/21 32/22

- 1-piece alloy construction
- Premium MX8 Alloy barrel
- Axe Handle for speed + control
- Endogrid technology for less bottom-hand vibration
- HyperWhip End Cap
- 1-year limited warranty

ELITEONE JUNIOR BIG BARREL -10



L165J | 2-3/4" DIAMETER | 26/16 27/17

- 1-piece alloy construction
- Premium MX8 Alloy barrel
- New Youth Axe Handle for more speed, control + comfort
- HyperWhip Composite Cap
- Recommended for coach pitch/machine pitch
- 1-year limited warranty
- New USSSA NTS Stamp

ELITE -5



L133J | 2-5/8" DIAMETER | 30/25 31/26 32/27

- 2-piece hybrid construction
- Premium MX8 Alloy barrel
- Second-gen Axe Handle for more speed, control + comfort
- Vibration-canceling VCS connection piece
- Endogrid technology for less bottom-hand vibration
- HyperWhip End Cap
- 1-year limited warranty
- New USSSA NTS Stamp

ELITE -5



L133H | 2-5/8" DIAMETER | 30/25 31/26 32/27

- 2-piece hybrid construction
- Premium MX8 Alloy barrel
- Axe Handle for speed + control
- Vibration-canceling VCS connection piece
- Endogrid technology for less bottom-hand vibration
- HyperWhip End Cap
- 1-year limited warranty

ELITEONE -10



L149H | 2-5/8" DIAMETER | 28/18 29/19 30/20 31/21

- 1-piece alloy construction
- Premium MX8 Alloy barrel
- Axe Handle for speed + control
- Endogrid technology for less bottom-hand vibration
- HyperWhip End Cap
- 1-year limited warranty

2-3/4" BARREL

2-3/4" BARREL

2-5/8" BARREL

AVENGE -11



L166H | 2-¼" DIAMETER | 24/13 25/14 26/15

- 1-piece alloy construction
- LP1 Alloy barrel
- Youth Axe Handle reinforces proper grip, swing path
- HyperWhip End Cap
- Recommended for tee ball only
- 1-year limited warranty

ORIGIN -11



L167H | 2-¼" DIAMETER | 24/13 25/14 26/15

- 1-piece alloy construction
- LP Alloy barrel
- Youth Axe Handle reinforces proper grip, swing path
- Recommended for tee ball only
- 1-year limited warranty

HERO -11



L129H | 2-¼" DIAMETER | 24/13 25/14 26/15

- 1-piece alloy construction
- LP Alloy barrel
- Youth Axe Handle reinforces proper grip, swing path
- Recommended for tee ball only
- 1-year limited warranty

SPEED TRAINERS



L160E | 2-½" DIAMETER | 32" 33" 34"

- 3 weighted training bats
- +20% barrel load, +20% handle load, -20% underload
- Premium composite underload bat can be used with soft toss
- 24 weeks of guided training from Driveline Baseball
- In-season and out-of-season training programs
- Recommended for high school and college hitters
- 120-day limited warranty

YOUTH SPEED TRAINERS



L178G | 2-½" DIAMETER | 29" 30" 31"

- 2 weighted alloy training bats
- +20% barrel load, +20% handle load
- 24 weeks of guided training from Driveline Baseball
- In-season and out-of-season training programs
- Recommended for ages 9-13 (pre-high school)
- 120-day limited warranty

LONG TRAINER



L184H | 2-½" DIAMETER | 37"/37 oz.

- Weighted, overlength alloy training bat
- Develops speed, control, and barrel awareness
- 24 weeks of guided training from Driveline Baseball
- In-season and out-of-season training programs
- Recommended for high school and college hitters
- 120-day limited warranty

SHORT TRAINER

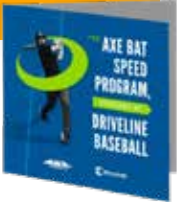


L183H | 2-½" DIAMETER | 37"/37 oz.

- Trains posture, barrel control, and swing sequencing
- Includes 24 weeks of guided training from Driveline Baseball
- In-season or out-of-season training programs
- For BBCOR hitters, individually or team/group training
- 120-day limited warranty

POWERED BY
DRIVELINE
BASEBALL

All Speed Trainers
come with 24 weeks
of guided training.



THE MOST ADVANCED WOOD BAT EVER

**30 DAY
WARRANTY**



New Pro-Fit Series from Axe Bat

Made for today's elite players

INNOVATION

State-of-the-art, 3D machining process cuts bats precisely and consistently down to the millimeter with a single pass.

Newly developed Charged Finish, formulated with the strongest chemical bonds, meticulously applied in a seven-step process that protects the barrel with a harder, stronger shell.

ALL-STAR
MOOKIE
BETTS



ALL-STAR
GEORGE
SPRINGER



MVP MB50 CUSTOM PRO-FIT MAPLE -3



L122H | 32" 33" 33.5" 34"

- MVP Mookie Betts' game bat model
- Made from single billet of pro-grade maple hardwood
- Proprietary, Charged Finish for improved hardness and durability
- Pro ink dot showing slope of grain
- Axe Handle for speed + control
- Wrapped with Betts' preferred Lizard Skins™ grip tape
- Made in U.S.A.
- 30-day limited warranty

CS4 CUSTOM PRO-FIT MAPLE -3



L123H | 32" 33" 33.5" 34"

- Series MVP George Springer's game bat model
- Made from single billet of pro-grade maple hardwood
- Proprietary, Charged Finish for improved hardness and durability
- Pro ink dot showing slope of grain
- Axe Handle for speed + control
- Made in U.S.A.
- 30-day limited warranty

PERFORMANCE

Steel-hardening process compresses the wood grain, making it harder and denser, so the ball jumps off the barrel.

Patented Axe Handle lets you swing faster with more barrel control for harder, more consistent contact.

QUALITY

Made from hand-split, pro-grade hard maple, the same premium wood used by the pros.

**AVAILABLE WITH AXE AND
POWER AXE HANDLES**

CUSTOM PRO-FIT WOOD



271 PRO-FIT MAPLE -3



L124H | 32" 33" 33.5" 34"

- Made from single billet of pro-grade maple hardwood
- Balanced 271 barrel for speed and power
- Proprietary, Charged Finish for improved hardness and durability
- Cupped for balance
- Pro ink dot showing slope of grain
- Axe Handle for speed + control
- Made in U.S.A.
- 30-day limited warranty



L124H-PWR | 32" 33" 33.5" 34"

- Also available with Power Axe Handle for speed + power
- 30-day limited warranty

243 PRO-FIT MAPLE -3



L125H | 32" 33" 33.5" 34"

- Made from single billet of pro-grade maple hardwood
- Full 243 barrel for more power and end-load
- Proprietary, Charged Finish for improved hardness and durability
- Cupped for balance
- Pro ink dot showing slope of grain
- Axe Handle for speed + control
- Made in U.S.A.
- 30-day limited warranty



L125H-PWR | 32" 33" 33.5" 34"

- Also available with Power Axe Handle for speed + power
- 30-day limited warranty

271 PRO MAPLE -3



L118 | 32" 33" 33.5" 34"

- Made from single billet of pro hard maple
- Balanced 271 barrel for speed and power
- Cupped for balance
- Pro ink dot showing slope of grain
- Axe Handle for speed + control
- Made in U.S.A.

243 PRO MAPLE -3



L119G | 32" 33" 33.5" 34"

- Made from single billet of pro hard maple
- Full 243 barrel for more power and end-load
- Cupped for balance
- Pro ink dot showing slope of grain
- Axe Handle for speed + control
- Made in U.S.A.

YOUTH PRO MAPLE -6



L121H | 28" 29" 30" 31"

- Made from single billet of pro hard maple
- Youth barrel profile for speed
- Cupped for balance
- Axe Handle for speed + control
- Made in U.S.A.

SOFTBALL PRO MAPLE



L191F | 34"

- Made from single billet of pro hard maple
- Slowpitch barrel profile for speed and power
- Cupped for balance
- Approved for play in all leagues; stamped for USA Softball (ASA) slowpitch
- Made in U.S.A.
- Drop -5 to -6

COMPOSITE WOOD TECHNOLOGY



○ **AXE[®] HANDLE:**

Our patented handle unlocks the full potential of your swing, so you can hit the ball harder and farther, more often.

○ **COMPOSITE HANDLE:**

Composite handle maximizes bat whip for greater barrel speed at the point of contact.

○ **CARBON CONNECTOR:**

The carbon connector adds unmatched durability to our single billet maple barrel by placing reinforcement at the highest stress point.

○ **HARD MAPLE:**

Premium grade North American Hard Maple.



L180F-GS4 | 2-5/8" DIAMETER | 31" 32" 33" 34"

GEORGE SPRINGER EDITION

- Barrel made from pro hard maple
- Composite handle reduces vibration and breakage
- Carbon connector provides reinforcement at highest stress point for improved durability
- BBCOR-certified
- 120-day limited warranty

PRO MAPLE FUNGO



L105H-35 | 35" | 22-23 OZ.

- Made from single billet of pro hard maple
- 35-inch fungo barrel for whip and control
- Axe Handle for precision and control when hitting infield/outfield



L116F | 2-1/2" DIAMETER | 29/24 30/25 31/26

- Laminate hardwood construction for improved durability
- Big-barrel profile
- Cupped for balance
- Axe Handle for speed + control
- 120-day limited warranty



NEW TECH

SHOCK SUSPENSION

Our new Shock Suspension technology intercepts vibration at the connection point, before it reaches your hands. The result is a smoother, more comfortable, and higher-performing swing. Available now on the new Avenge Pro Fastpitch



ELEMENT -12



L151H | 2-¼" DIAMETER | 28/16 29/17 30/18 31/19 32/20 33/21

- 1-piece alloy construction
- Premium MX8 Alloy barrel
- Fastpitch Axe Handle for speed + control
- Endogrid technology for less bottom-hand vibration
- HyperWhip End Cap
- 1-year limited warranty

DANIELLE LAWRIE -12



L136H | 2-¼" DIAMETER | 27/15 28/16 29/17 30/18 31/19 32/20

- 1-piece alloy construction
- LP1 Alloy barrel
- Fastpitch Axe Handle for speed + control
- HyperWhip End Cap
- Endorsed by 2x National Player of the Year Danielle Lawrie
- 1-year limited warranty

AVENGE PRO POWER GAP -9, -10, -11



L158J | 2-¼" DIAMETER

-9: 32/23 33/24 34/25 | -10: 30/20 31/21 32/22 33/23 34/24 | -11: 29/18 30/19 31/20 32/21 33/22

- 2-piece Charged Carbon+ construction
- Power Gap Blastwall barrel expands sweet spot for better, more consistent performance
- New Fastpitch Axe Handle for speed, control + comfort
- New Shock Suspension vibration-cancelling system
- Endogrid technology for less bottom-hand vibration
- HyperWhip Composite Cap
- 1-year limited warranty

SOFTBALL SPEED TRAINERS



L179G | 2-¼" DIAMETER | 31" 32" 33" 34"

- 2 weighted alloy training bats
- +20% barrel load, +20% handle load
- 24 weeks of guided training
- In-season and out-of-season training programs
- Also available for slowpitch (34" only)
- Recommended for high school and college hitters
- 1-year limited warranty



AVENGE PRO USSSA NTS -6, -7, -8



L154J | 2-¼" DIAMETER | -6: 34/28 | -7: 34/27 | -8: 34/26*

- 2-piece Charged Carbon+ construction
- Tri-Flex Blastwall barrel
- Balanced swing weight
- Slowpitch Axe Handle for speed, control + comfort
- Vibration-canceling VCS connection piece
- HyperWhip End Cap
- Approved for USSSA NTS, NSA, and ISA
- 1-year limited warranty



AVENGE USSSA -6, -7, -8



L154H + L154H-E | 2-¼" DIAMETER | -6: 34/28 | -7: 34/27 | -8: 34/26*

- 2-piece Charged Carbon construction
- Tri-Flex barrel
- Balanced swing weight
- Slowpitch Axe Handle for speed + control
- Vibration-canceling VCS connection piece
- New HyperWhip Composite Cap
- Approved for USSSA, NSA, and ISA
- 1-year limited warranty

END-LOADED SPECIFICATIONS:
•End-loaded, 2-piece composite construction
•One full ounce of end load
*8 not available in end-loaded



AVENGE POWER GAP USA -6, -7, -8



L155J | 2-¼" DIAMETER | -6: 34/28 | -7: 34/27 | -8: 34/26

- 2-piece Charged Carbon construction
- Power Gap barrel expands sweet spot for better, more consistent performance
- Slowpitch Axe Handle for speed, control + comfort
- Vibration-canceling VCS connection piece
- HyperWhip Composite Cap
- Approved for USA (ASA) and WBSC
- 1-year limited warranty



AVENGE PRO USSSA/USA -6, -7, -8



L193J | 2-¼" DIAMETER | -6: 34/28 | -7: 34/27 | -8: 34/26

- 2-piece Charged Carbon+ construction
- Tri-Flex Blastwall barrel
- Slowpitch Axe Handle for speed, control + comfort
- Vibration-canceling VCS connection piece
- HyperWhip End Cap
- Approved for USSSA NTS, USA (ASA), NSA, ISA, and WBSC
- 1-year limited warranty



AVENGE SSUSA -6, -7, -8



L177J | 2-¼" DIAMETER | -6: 34/28 | -7: 34/27 | -8: 34/26

- 2-piece Charged Carbon construction
- Tri-Flex barrel
- Balanced swing weight
- Slowpitch Axe Handle for speed, control + comfort
- Vibration-canceling VCS connection piece
- HyperWhip End Cap
- Approved for SSUSA and ISA



OPS BAT PACK



- Universal neoprene bat sleeves hold two bats securely
- Shoe compartment keeps dirt away from other cargo
- Fence hooks and Velcro glove keeper for easy access in the dugout
- Holds two bats, shoes, helmet, fielding glove, and batting gloves with ease
- Separate pockets for sunglasses, cell phone, laptop/tablet, and keys
- Heavy duty J-style fence hooks

PRO-FIT BATTING GLOVES



- Premium Cabretta Leather
- Digitally embossed 1-piece leather palm
- 4-way stretch knit for superior flex + comfort
- Reverse-flap cuff for ultimate fit + mobility
- Available in Youth (S, M, L) and Adult (S, M, L, XL, and 2XL)

PRO PLAYER T-SHIRT



- High-quality cotton/polyester (60%/40%) blend
- Features gold-flake Axe Handle logo
- Available in S, M, L, XL, and 2XL

PRO PLAYER HAT



- Adjustable snapback, one size fits all (youth to adult)

**YOUR BEST SWING
STARTS NOW.**



AXEBAT.COM