



**CLIFF KEEN  
ATHLETIC**

**2020-21 WRESTLING**





**SFM • Custom Sublimated Face Mask**

New from Cliff Keen, our custom sublimated face masks allow for team customization, while providing the necessary mouth and face covering needed for public gatherings. MXS® fabric wicks moisture away from the face. Minimum order of twelve. Made in the USA.

**LIST \$22.00** Web \$17.50 Sz. S/M, L/XL

\*Neither The Contoured Mask nor The Gaiter is a medical device and neither has been reviewed or approved by the Food and Drug administration or any other regulatory body. The Contoured Mask and The Gaiter are not intended to be replacements for N95 face masks.



**SGAITER • Custom Neck Gaiter**

New from Cliff Keen, The Sports Gaiter can be worn as a traditional face and head covering, do-rag, head band or a multitude of other applications! Stay cool and dry during your workouts while maintaining protective face covering. Fully sublimated with your team's colors and graphics, minimum 12 per custom order. Made in USA.

**LIST \$27.90** Web \$22.00



PAGE 33



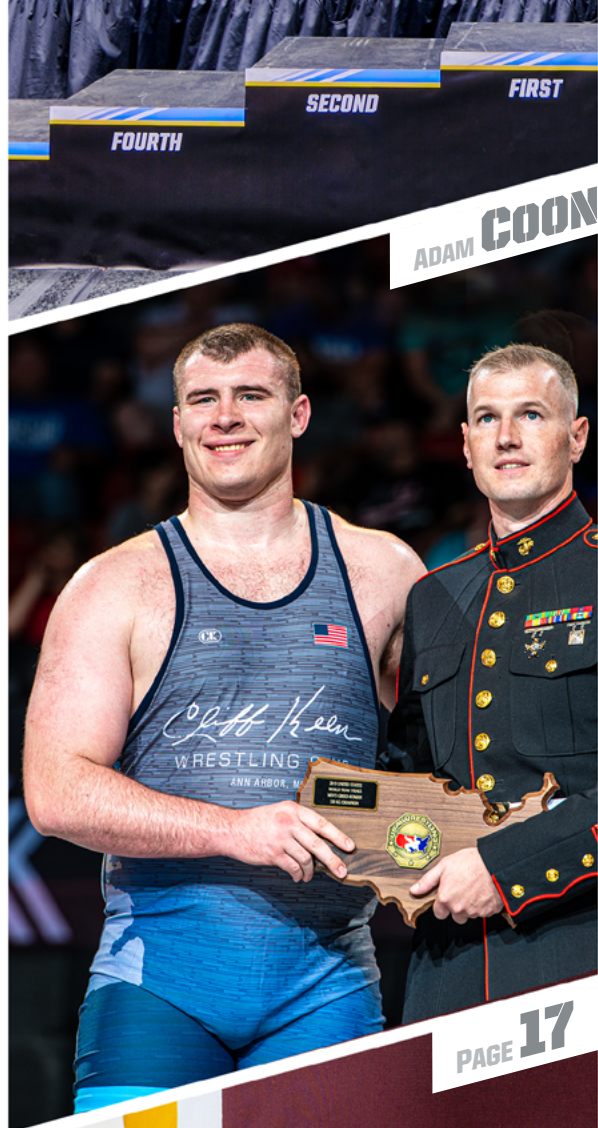
PAGE 40



PAGE 39

**WHAT'S NEW?**

PAGE 33



PAGE 17



PAGE 30



## FROM THE TOP

Cliff Keen would like to send our heartfelt condolences to all those who lost the opportunity to compete for a championship at the end of last season.

We especially feel for the seniors who missed the chance to close out their careers on their terms. Congratulations on all you've achieved!

The lessons you have learned from wrestling will have great carryover value for the rest of your life.

Wrestling will Prevail!

## TABLE OF CONTENTS

### HEADGEAR 4

Signature, Tornado, Fusion

### KNEE PROTECTION 10

Kneepads and Sleeves

### CUSTOM UNIS. 12

Singlets and 2-Piece Kits

### STOCK UNIFORMS 26

Blank Uniform Gear

### WARM-UPS 30

Separates and Sets

### TRAINING 32

Practice and Workout Gear

### LIFESTYLE 36

Gear for the Rest of the Day

### ACCESSORIES 40

Backpacks, Mat Care, etc.

CLIFF KEEN ATHLETIC  
800.992.0799 • INFO@CLIFFKEEN.COM  
P.O. BOX 1447, ANN ARBOR, MI 48106





**HEADGEAR**  
*Signature*™



TOP-SELLING  
**ALL-TIME**  
HEADGEAR

## THE SIGNATURE®

### E58 • Stock Headgear

Our longest and top selling headgear, the E58 Signature® is based on the classic foam E41, patented by Coach Cliff Keen over 60 years ago. The modern E58 has an inner shell made with a state-of-the-art polycarbonate composite and a foam outer cover for durability and comfort.

- Fully Adjustable
- Chin Strap Pad included
- 13 Stock Color Choices

**LIST \$43.90** Web \$40.00

### STOCK SIGNATURE® COLORWAYS



### CKWRAP • Custom Wrap Headgear

The ultimate in customization, our Signature® Headgear can be wrapped in your team's logo! Your graphics will be sealed to the outer pad for maximum visibility and durability. Minimum order of 12.

**LIST \$69.90** Web \$54.50



### HG2S58 • E58 2-Strap Holder

Holds the top two straps of the Signature® Headgear together. Sold individually, only available in white.

**LIST \$3.50** Web \$4.50



### CCS • Replacement E58 Straps

Set of 5 straps to replace the ones that came with your Signature® Headgear. Available in all 8 colors listed above.

**LIST \$7.90** Web \$6.50

### STRAPS

- Black
- Light Gold
- Navy Blue
- Orange
- Royal Blue
- Scarlet
- Vegas Gold
- White

### PADS

- Black
- Dark Green
- Light Gold
- Maroon
- Navy Blue
- Orange
- Purple

- Royal Blue
- Scarlet
- Silver Grey
- Vegas Gold
- White

CUSTOMIZE WITH



### CE58 • Custom Signature® Headgear

Our Signature® headgear featuring customizable strap and pad colors.

**LIST \$47.90** Web \$37.50



### YE58 • Youth Signature® Headgear

Our E58, designed for a youth head with special cloth-backed foam padding and smaller overall size. Straps adjust to fit all youth heads. Available in black only.

**LIST \$35.80** Web \$28.00





## THE TORNADO®

### F5 • Stock Headgear

Keep your head in the match with the Tornado® headgear. A revolutionary design based on NASA research. The Tornado® is lighter, cooler and features Greater Audible Sound™ technology. Its 4-Strap System ensures a better, faster fit. It's made from our strongest components yet, for increased durability. Stock colorways listed below.

- 43% Lighter than Other Headgear
- Combats Bacterial Build-up
- On-The-Fly Strapping System™
- Two Dozen Stock Colorways

**LIST \$47.90** Web \$42.00

#### STOCK TORNADO® COLORWAYS



BK / BK / BK BK / WH / BK BK / RB / BK BK / DG / BK BK / SC / BK BK / OR / BK BK / VG / BK BK / LG / BK BK / PK / BK NV / LG / NV NY / NY / NY RB / RB / RB



#### EXOSHELL™

- |              |             |
|--------------|-------------|
| Black        | Navy Blue   |
| Dark Green   | Orange      |
| Kelly Green  | Purple      |
| Light Gold   | Royal       |
| Maroon       | Scarlet     |
| Silver Metal | Translucent |
| Vegas Metal  |             |

#### EXOSHELL™

- Scarlet

#### VORTEX VNF PADS™

- Navy Blue

#### POWERTAB STRAPS™

- White

#### VORTEX VNF PADS™

- |             |             |
|-------------|-------------|
| Black       | Orange      |
| Cardinal    | Purple      |
| Columbia    | Royal Blue  |
| Dark Green  | Scarlet     |
| Kelly Green | Silver Grey |
| Light Gold  | Vegas Gold  |
| Maroon      | White       |
| Navy Blue   |             |

#### POWERTAB STRAPS™

- |             |             |
|-------------|-------------|
| Black       | Orange      |
| Cardinal    | Purple      |
| Columbia    | Royal Blue  |
| Dark Green  | Scarlet     |
| Kelly Green | Silver Grey |
| Light Gold  | Vegas Gold  |
| Maroon      | White       |
| Navy Blue   |             |

### CF5 • Custom Tornado® Headgear

Here's where the fun starts! Our Tornado® Headgear is the most customizable headgear available. Choose from the menu above to specify your own custom set. Select up to 3 different colors for the pads, straps and shell.

**LIST \$51.90** Web \$43.50



**CPF5 • F5 Chin Strap Pad**  
Replacement chin strap pad for your Tornado® Headgear. Sold Individually. Available in colors on the menu above.

**LIST \$6.00** Web \$5.00



**HG2SF5 • F5 2-Strap Holder**  
Set of 2 straps designed to hold the top and back two straps of the Tornado® Headgear together. Comes in black only.

**LIST \$6.00** Web \$4.50



**YF5 • Youth Tornado® Headgear**  
Our Youth Tornado® Headgear fits younger heads sized 18"-21½". Available in the six colorways depicted here.

**LIST \$45.00** Web \$40.00



TR / WH / WH RB / WH / RB TR / BK / BK TR / DG / DG TR / NY / NY TR / MN / MN TR / RB / RB TR / SC / SC TR / SC / BK SC / SC / SC MN / MN / MN DG / DG / DG





## THE FUSION®

### EF66 • Stock Headgear

The Fusion® Headgear combines all of the favorite features of our top-selling Cliff Keen ear guards. It is the most comfortable, durable and protective ear guard we've made for wrestlers yet!

Tried and tested on some of the sport's best athletes who've ranked it as their favorite ear guard. The Fusion® boasts a specially engineered 3-strap configuration that provides a snug, yet flexible and secure fit.

- Soft Closed Cell Foam Cover
- On-The-Fly Strapping System™
- Pliable Inner Shell Contours to Head
- Easily cleanable with soap/water

**LIST \$49.90** Web \$45.00

#### STOCK FUSION® COLORWAYS



ROYAL

NAVY

NAVY / LT. GOLD

BLACK / LT. GOLD

BLACK / ORANGE

BLACK / CARDINAL

BLACK

BLACK / SCARLET

SCARLET / BLACK

SCARLET

MAROON



## THE SLICKER®

Attaches securely to any Cliff Keen headgear. Made of a breathable Lycra material. Complies with NFHS rules, specifically that hair coverings must attach to the headgear. Can be worn inside or outside of headgear. Black only.

### HSL96 • Adult Hair Cover

**LIST \$26.90** Web \$21.00

### YHSL96 • Youth Hair Cover

**LIST \$26.90** Web \$21.00



## ACCESSORIES

All headgear accessories on this page are compatible with all models of Cliff Keen Athletic headgear



### CSM • Chin Cup Assembly

Compatible with all Cliff Keen Headgear. Available in White, Black, Navy, Scarlet, Royal Blue, and Light Gold.

**LIST \$9.00** Web \$7.50

## THE CROSS FACE®

### FG3 • Facial Protection

Designed to help protect facial injuries. Attaches securely to any Cliff Keen headgear. Includes Chin Cup.

**LIST \$89.60** Web \$70.00



#### STOCK FUSION® COLORWAYS (CONT.)



WHITE / MAROON WHITE / SCARLET WHITE / BLACK WHITE / DK. GREEN WHITE / NAVY WHITE / ROYAL BLUE







SSK89

YSSK89



ENTIRE WHITE AREA CAN BE  
DECORATED IN FULL COLOR!



SSK88

YSSK88



## THE SURE SHOT<sup>®</sup>

### SSK89 • Deluxe Adult Compression Sleeve

End mat burn forever! The Sure Shot<sup>®</sup> compression shooting sleeve keeps your ligaments warm and comfortable with style. Speaking of style, the white section directly on the knee cap area can be spot-sublimated with your team graphics! (Additional charge applies) Made of soft knit polyester, this sleeve will stretch and contour to the shape of your knee like no other. Machine washable. Sold individually.

**LIST \$14.20** Web \$11.50

### YSSK89 • Deluxe Youth Compression Sleeve

Youth version of The Sure Shot<sup>®</sup>

**LIST \$13.60** Web \$11.00

### SSK88 • Adult Compression Sleeve

Durable yet soft fabric stretches and contours to your knee. Machine washable. Sold Individually.

**LIST \$14.20** Web \$11.50

### YSSK88 • Youth Sleeve

Youth version of the compression sleeve.

**LIST \$13.60** Web \$11.00



## THE WRAPTOR<sup>™</sup>

### RK30 • Adult Kneepad

This sleek kneepad brings added comfort and function with stretch mesh panels on the back, allowing for a comfortable fit and increased performance on the mat! The Wraptor<sup>™</sup> 2.0 also features anatomical wrap-around padding for high-impact absorption and lateral support.

**LIST \$23.50** Web \$22.00 Sz. S-XXL

### RK30Y • Youth Kneepad

Youth version of The Wraptor<sup>®</sup> 2.0

**LIST \$23.50** Web \$22.00



BK64 - WHITE

## THE IMPACT<sup>™</sup>

### BK64 • Adult Kneepad

The Impact<sup>™</sup> Knee pad, a top-seller, boasts a patented ergonomic construction and anatomical compression-molded "bubble" which provides high-impact protection and an excellent fit. Available in 4 colorways. Sold individually.

**LIST \$15.50** Web \$20.00

### BK64Y • Youth Kneepad

Youth sized Impact<sup>™</sup> Black only.

**LIST \$14.50** Web \$15.00



POWERED BY: poron<sup>XRD</sup> extreme impact protection

## THE XTREME IMPACT<sup>™</sup>

### SPK16 • Kneepad

This kneepad features XRD<sup>™</sup> high performance molecules that create a unique protective shield which absorbs up to 90 lbs. of force. This wearable padding works with you while being lightweight, comfortable and breathable. Microban<sup>®</sup> antimicrobial protection inhibits the growth of bacterial odors.

**LIST \$35.90** Web \$27.50



## THE AIR BRACE<sup>™</sup>

### AB99 • Orthopedic Kneepad

The Air Brace<sup>™</sup> was developed by orthopedic surgeons and engineers and was tested by thousands of athletes and coaches. Its unique, sealed rubber tubes dissipate shock four ways, while a triple-pad design protects the entire knee. And because it's so light weight, the Air Brace<sup>™</sup> allows for complete mobility.

**LIST \$49.90** Web \$41.00 Sz. S-XXL

Sealed Rubber Tubular panels  
Air Brace<sup>™</sup> Patella Circular  
Centering Brace  
Outer Surface Padding



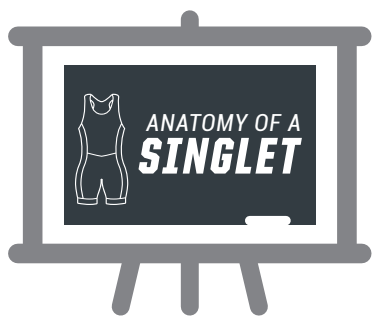
SCARLET

BLACK

NAVY

WHITE / CHARCOAL





A Handy Guide to Designing and Ordering our Sublimated Singlets

PANEL OPTIONS

Custom Panels, Bands or Back?  
We also offer several options for customizing the fit and feel of your singlets. Increase airflow with our mesh back material, or get extra expressive with full-sub leg bands or side panels.

BACK STYLE

Full Back or T-Back?  
The first thing to consider with men's singlets is whether you want a streamlined, traditional T-back, or a full-back with more coverage and a modern look.



S74GR43J • Full-Back Singlet



S7943J • T-Back Singlet



S74MB43J • Mesh-Back Singlet



SCAC43J • Side Panel Singlet



S79CB43J • Compression Leg Band Singlet



S79CK43J • Deluxe Singlet



How to Order Your Whole Team's Uniforms, with or without Singlets.



SBDUSS1 • Compression Top



SBRDCS6 • Board Short



SBDUSS1 • Compression Top



SLWS • Compression Short

2-PIECE KIT OPTIONS

« Compression Top / Board Short  
Our most popular 2-piece option. Can mirror any singlet design available.

» Compression Top and Short  
Closest cousin to the singlet, available with and without side panels.

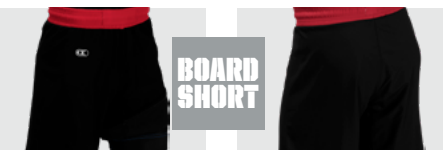
» Singlet / Board Short  
Offers unmatched versatility, wrestler can compete with or without shorts.

APPROVED UNIFORMS

Four Legal Options for One Uniform  
Along with the tried and true singlet (see previous page) the combinations shown here are all approved for scholastic use. All of our designs can match across any of the four uniform options.



S74GR43J • Full-Back Singlet



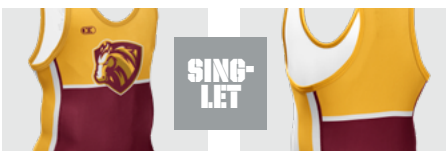
SBRDCS6 • Board Short

DESIGN TEMPLATES

Need a little help with inspiration?  
Visit our website to choose from many different design templates for you to customize with your team's logo, colors, and graphics.

Singlet Model	'T' Back	Full Back	Side Panels	Leg Bands	Mesh Back
S7943J	✓				
S74GR43J		✓			
S74MB43J		✓		✓	✓
SCAC43J	✓		✓		
S74CB43J		✓		✓	
S79CK43J	✓		✓	✓	✓

Compression Tops	Side Panels	Leg Bands
SBDUSS1		
SBDUSP3	✓	
Compression Bottoms	Side Panels	Leg Bands
SLWS		
SCKWS43	✓	✓
Board Shorts	Side Panels	Leg Bands
SBRDCS6		



SCAC43J • Side Panel Singlet



SBDUSP3 • Compression Top



SCKWS43 • Compression Short

WEAR WHAT WORKS

Different, But Still Uniform  
Whether you're trying to match the singlets you bought three seasons back, or helping everyone on the team feel comfortable, our styles can be applied to any approved uniform combination. All our two-piece gear is available with the same cuts and styles as our singlets. So the kid wearing the shorts and the one next to him in the singlet will look like they came from the same locker room. No matter what style of uniform they feel comfortable competing in.





S79CK43J



SBDUSP3/SCKBRDS

SBDUSP3/SCKWS43

## CK DELUXE

This is the uniform with all the bells and whistles! Side panels, leg bands, mesh back and accent seam across the front.

**S79CK43J • Singlet**

**LIST \$118.00** Web \$92.50 Sz. 3XS-3XL

**SBDUSP3 • Compression Top**

**LIST \$75.00** Web \$56.50 Sz. 3XS-3XL

**SCKWS43 • Compression Short**

**LIST \$67.50** Web \$53.00 Sz. 3XS-3XL

**SCKBRDS • Board Short**

**LIST \$69.90** Web \$55.00 Sz. YS-2XL



SBDUSP3/SCKBRDS

SBDUSP3/SCKWS43

## SCAC STYLE

Side panels on Singlet and Compression Gear. Compression Shorts have leg bands. Board shorts decorated to match.

**SCAC43J • Singlet**

**LIST \$111.00** Web \$87.00 Sz. 3XS-3XL

**SBDUSP3 • Compression Top**

**LIST \$72.00** Web \$56.50 Sz. 3XS-3XL

**SLWS43AC • Compression Short**

**LIST \$67.50** Web \$53.00 Sz. 3XS-3XL

**SBRDSAC • Board Short**

**LIST \$69.90** Web \$55.00 Sz. YS-2XL



SCAC43J



SBDUSS1/SBRDCS6

SBDUSS1/SLWS

## COMPRESSION BANDS

Singlets feature sublimated, full-wrap leg bands. Both shorts are decorated to match, but faux bands end at the crotch.

**S74CB43J • Singlet**

**LIST \$99.80** Web \$78.00 Sz. 3XS-3XL

**SBDUSS1 • Compression Top**

**LIST \$72.00** Web \$56.50 Sz. 3XS-3XL

**SLWS • Compression Short**

**LIST \$59.90** Web \$47.00 Sz. 3XS-3XL

**SBRDCS6 • Board Short**

**LIST \$69.90** Web \$55.00 Sz. YS-2XL



S74CB43J



S74MB43J



SBDUSMB/SBRDSMB

SBDUSMB/SLWS43MB

## MESH BACK

Singlets feature a wide mesh back panel and compression leg bands. All other styles are decorated to match.

**S74MB43J • Singlet**

**LIST \$116.00** Web \$89.00 Sz. 3XS-3XL

**SBDUSMB • Compression Top**

**LIST \$72.00** Web \$56.50 Sz. 3XS-3XL

**SLWS43MB • Compression Short**

**LIST \$59.90** Web \$47.00 Sz. 3XS-3XL

**SBRDSMB • Board Short**

**LIST \$69.90** Web \$55.00 Sz. YS-2XL







STYLE  
61

SBDUS61 / SBRDS61

SBDUS61 / SLWS61



\$744361



\$744343

SBDUS43 / SLWS43



STYLE  
43

SBDUS43 / SBRDS43

## UNIFORM TEMPLATES

\*\*Insert style number after the style prefixes listed below.

**S7943\*\* / S7443\*\* Singlet**

**LIST \$99.80** Web \$78.00 Sz. 3XS-3XL

**SBDUS\*\* Compression Top**

**LIST \$72.00** Web \$56.50 Sz. 3XS-3XL

**SLWS\*\* Compression Short**

**LIST \$59.90** Web \$47.00 Sz. 3XS-3XL

**SBRDS\*\* Board Short**

**LIST \$69.90** Web \$55.00 Sz. YS-2XL



STYLE  
60

SBDUS60 / SLWS60



\$794360

SBDUS60 / SLWS60



SCAC59

STYLE  
59

SBDUC59 / SBRDC59

SBDUC59 / SLWC59

## STYLE 59

Allows for your team or club's name to be run down the side of both legs. Custom side panels on singlets and comp. shorts.

**SCAC59 • Singlet**

**LIST \$111.00** Web \$86.00 Sz. 3XS-3XL

**SBDUC59 • Compression Top**

**LIST \$72.00** Web \$56.50 Sz. 3XS-3XL

**SLWSC59 • Compression Short**

**LIST \$67.50** Web \$47.00 Sz. 3XS-3XL

**SBRDC59 • Board Short**

**LIST \$69.90** Web \$55.00 Sz. YS-2XL

THERE ARE MANY MORE  
**TEMPLATE  
STYLES**  
AVAILABLE AT [CLIFFKEEN.COM](http://CLIFFKEEN.COM)



STYLE  
24

\$744324



SBDUS24 / SLWS24

\$744324J

## STYLE 24

Allows for a graphic over a side seam.

**S794324 • Singlet**

**LIST \$110.00** Web \$86.00 Sz. 3XS-3XL

**SBDUS24 Compression Top**

**LIST \$72.00** Web \$56.50 Sz. 3XS-3XL

**SLWS24 Compression Short**

**LIST \$59.90** Web \$47.00 Sz. 3XS-3XL

**SBRDS24 Board Short**

**LIST \$69.90** Web \$55.00 Sz. YS-2XL







**SW790KC • Racerback Singlet**  
Thinner back with shorter leg inseams.  
**LIST \$99.80** Web \$78.00 Sz. 3XS-3XL



**SW79CK • Deluxe CK Singlet**  
Our women's singlet with sewn-in side panels, leg bands and a mesh upper back. Contrasting seam across the front.  
**LIST \$118.00** Web \$92.50 Sz. 3XS-3XL



**SW7943 • Wide Back Singlet**  
Standard, fuller back, sublimated singlet  
**LIST \$99.80** Web \$78.00 Sz. 3XS-3XL



**SW74MB • Mesh Wide Back Singlet**  
Our full back women's singlet with a customizable mesh upper back panel and sewn-on sublimated leg bands.  
**LIST \$116.00** Web \$90.50 Sz. 3XS-3XL



Compression Top and Board Short.  
**SWBDUSS1 • Compression Top**  
**LIST \$72.00** Web \$56.50 Sz. 3XS-3XL  
**SWBRDS • Board Shorts**  
**LIST \$69.90** Web \$55.00 Sz. 3XS-2XL



« Female-specific garments beyond these two pages will be noted by this symbol



Singlet and Board Shorts.  
**SW7943J • Wide Back Singlet**  
**LIST \$99.80** Web \$78.00 Sz. 3XS-3XL  
**SWBRDS • Board Shorts**  
**LIST \$69.90** Web \$55.00 Sz. 3XS-2XL



Compression Top and Shorts.  
**SWBDUSS1 • Compression Top**  
**LIST \$72.00** Web \$56.50 Sz. 3XS-3XL  
**SWLWS • Compression Shorts**  
**LIST \$59.90** Web \$47.00 Sz. 3XS-3XL





CUSTOMIZE WITH  
• UNIFORM •  
**UWB**  
• BUILDER •

 **SUBLIMATED  
SINGLETS**

## 100% UNIQUE SINGLETS

If you can dream it, you can build it. The sky's the limit with our custom sublimation, available in full and t-back cuts. Our proprietary Compression Gear® Lycra sublimated singlets provide the ultimate comfort, performance, and durability in the wrestling world!

**S7943J • Custom T-Back Singlet**  
**LIST \$99.80** Web \$78.00 Sz. 3XS-3XL

**S74GR43J • Custom Full Back Singlet**  
**LIST \$101.00** Web \$79.50 Sz. 3XS-3XL

↻ TWO SIDED  
**REVERSIBLE**  
SINGLET ↻



## THE REVERSIBLE

**S79REV • Reversible T-Back Singlet**

It's two singlets in one with our sublimated reversible singlet! These singlets are made with our exclusive compression gear fabric and are a legal cut for NFHS, freesyle, and folkstyle competition.

Note, we do recommend using darker colors on both sides and minimizing light shades overall. We may recommend changes to ensure the best final product.

**LIST \$150.00** Web \$115.50 Sz. XXXS-XXXL



## UWW OLYMPIC CUT

Wrestle like the best with a singlet made to conform to UWW regulations. Official UWW red or blue striping and template. Must be approved by UWW committee before being eligible for competition.

**S74UW • Men's UWW Singlet**  
**LIST \$105.00** Web \$82.00 Sz. XXXS-XXXL  
**SW74U • Women's UWW Singlet**  
**LIST \$105.00** Web \$82.00 Sz. XXXS-XXXL

## SIZING INFORMATION

### STOCK SINGLETS

Weight	Size	Weight	Size
45-60 lbs.	XXXS	161-190 lbs.	L
61-85 lbs.	XXS	191-220 lbs.	XL
86-105 lbs.	XS	221-250 lbs.	XXL
106-130 lbs.	S	251-280 lbs.	3XL
131-160 lbs.	M	*If borderline, size UP	

### KNEE PADS

Knee Size*	Size	Knee Size*	Size
9 1/2" to 11 1/2"	XS	15 1/2" to 17"	L
11 1/2" to 13 1/2"	S	17" to 18 1/2"	XL
13 1/2" to 15 1/2"	M	15 1/2" and up	XXL

\*Measure around leg at the center of your bent knee

### FULL-SUB. SINGLETS

Weight	Size	Weight	Size
40-55 lbs.	XXXS	156-190 lbs.	L
56-80 lbs.	XXS	191-220 lbs.	XL
81-100 lbs.	XS	221-250 lbs.	XXL
101-125 lbs.	S	251-280 lbs.	3XL
126-155 lbs.	M	*If borderline, size UP	

### SHORTS

Waist	Size	Waist	Size
22 to 24"	YS	33 to 34"	M
24 to 26"	YM	35 to 36"	L
26 to 28"	YL	37 to 40"	XL
30 to 32"	S	41 to 44"	XXL

### WOMEN'S SINGLETS

Weight	Size	Weight	Size
40-55 lbs.	XXXS	156-190 lbs.	L
56-80 lbs.	XXS	191-220 lbs.	XL
81-100 lbs.	XS	221-250 lbs.	XXL
101-125 lbs.	S	251-280 lbs.	3XL
126-155 lbs.	M	*If borderline, size UP	

Use these measurements to determine sizing for a correct fit.

Note, all measurements refer to a finished garment. Garments not being screen printed may finish slightly larger. On all measurements, allow ± 1/2" on flat.

Please note that this size chart is a general guideline, specifically based on body weight. Due to variations in height and diverse body types, sizing can differ from suggestions in chart.





## SCREEN PRINTED SINGLETS



BACK



**L742I43J • Screen Printed Waistband Singlet**  
Our popular waistband singlet can be screen printed for an absolutely knockout look. Also available fully sublimated (S742I). Custom pricing information is listed on page 23. Custom, rib-knit leg cuff options listed above.  
**LIST \$108.00** Web \$84.50 Sz. XXXS-XXXL

**L742I96J • Screen Printed Waistband Singlet**  
Same singlet with super heavy weight Lycra.  
**LIST \$118.00** Web \$92.50  
Sz. XXXS-XXXL

**LOSU43 • Screen Printed Singlet w/Side Panels**  
This singlet screams with team spirit as the front and back can be different colors! Features side panels that are perfect for team lettering and a shorter 6" inseam.  
**LIST \$98.00** Web \$76.50 Sz. XXXS-XXXL

**LOSU96 • Screen Printed Singlet w/Side Panels**  
Same singlet made with super heavy weight Lycra.  
**LIST \$108.00** Web \$84.50 Sz. XXXS-XXXL



**L74CC43J • Singlet w/Leg Cuffs**  
Dress like the best in our full back singlet with rib-knit leg bands. Worn by many of the nation's top wrestling programs, cuff styles listed above. Sizes XXXS-XXXL  
**LIST \$98.00** Web \$76.50

**L74CC96J • Singlet w/Leg Cuffs**  
Same singlet made with super heavy weight Lycra. Sizes XXXS-XXXL  
**LIST \$108.00** Web \$84.50

## CUSTOM ART PRICING

### ALL ARTWORK

Custom Team Uniform Mock-Ups  
**LIST \$60.00** WEB \$45.00

Names or Numbers on Sublimated Gear  
**LIST \$90.00** WEB \$70.00

Additional (non-template) Side Seam Art  
**LIST \$90.00** WEB \$70.00

All non-print ready (preferably vector) art will be prepared based on our hourly rate  
**LIST \$100/hr.** WEB \$75.00/hr.

For non-stock logos, digital art submission is preferred and recommended file formats include .ai, .eps, .pdf, and .svg

### SUBLIMATION

The following applies to stock items using spot sublimation only.

Lettering/Logos	List	Web
1-Location	\$8.00/each	\$6.50/each

The following applies to all sublimation.

	List	Web
Set-up Charge	\$90.00/order	\$70.50/order
Reorder Charge	\$60.00/order	\$47.00/order

### EMBROIDERY

For custom embroidery and tackle twill pricing info, call (800)992-0799 or email CustomerService@cliffkeen.com

### SCREEN PRINTING

All screen printing pricing is per location.

Lettering	List	Web
1-Color	\$7.00/each	\$5.50/each
2-Colors	\$9.50/each	\$7.50/each

Gap Outline lettering will incur an additional color charge.

Logos	List	Web
1-2 Colors	\$10.00/each	\$8.00/each
Add. Colors	\$2.90/each	\$2.50/each

Set-up Charge \$100.00/order \$70.00/order  
Reorder Charge \$60.00/order \$45.00/order

Screen printing custom warm-ups extra. Metallic inks will be charged as a 2-color, unless design already has multiple colors.

### LEG CUFFS

All of our available leg band color options are listed on page 46.

All colors can be applied Pattern 1. Pattern 2 can use all colors with a white middle stripe. Pattern 4 allows for all colors with 2 white middle stripes, as well as Black/Gold, Black/Orange, and Navy/Gold.

All other colors and patterns are subject to a 12 piece minimum or \$50 upcharge.





# THE ORIGINAL WRESTLING OUTFITTER



- A TDRI 3.0 Top**  
TDRI3 · pg. 32  
Spot-Sub. Workout Top
- B TDRI 3.0 Short**  
MXSHORT · pg. 33  
Screened Workout Shorts
- C Singlet**  
S7943J · pgs. 14-21  
Fully Sublimated Singlet

- D Gear Bag**  
MBP13 · pg. 41  
Sublimated Mesh Backpack
- E Fleece Hoodie**  
CKHOODIE · pg. 38  
Spot-Sublimated Sweatshirt
- F Fleece Shorts**  
CKSSHORT · pg. 38  
Spot-Sub. Sweat Shorts

- G The Captain**  
WCKHZP · pg. 37  
Screen-Printed 1/2-Zip
- H Socks**  
CKCUSSK · pg. 39  
Custom Training Socks
- I Headgear**  
CKWRAP, CE58 · pg. 5  
Custom & Wrapped Signature

Performing at your absolute best starts with using the absolute best gear. At Cliff Keen Athletic, we are dedicated to providing the most innovative tools needed for the wrestler to achieve their goals of victory. In a sport that takes courage, endurance, agility, dexterity, speed and above all - heart, we are leaps and bounds ahead of the curve.

We're proud to say that our cutting edge, state-of-the-art wrestling products have been worn & used by some of the greatest athletes to ever enter the circle. We are equally honored by all the athletes on the rise who proudly wear Cliff Keen on the mats. We take pride in our over 60 year heritage and look forward to serving you for many years to come!

# SINCE 1958 ANN ARBOR, MI USA



- J Compression Top**  
SBDUSS1 · pgs. 14-21  
Sublimated Uniform Shirt
- K Board Short**  
SBRDCS6 · pgs. 14-21  
Sublimated Uniform Shorts
- L The Podium**  
WS7593 · pg. 31  
Screened Warm-Up Set

- M The Beast**  
ABP18 · pg. 40  
Sublimated Deluxe Backpack
- N Quarter-Zip Top**  
SCKQZP · pg. 34  
Sublimated Warm-Up Shirt
- O Melange T-Shirt**  
TMEL1 · pg. 39  
Spot Sublimated Top

- P The Jogger**  
CKJ9282 · pg. 37  
Screen Printed Sweatpants
- Q The Beast Jr.**  
ABP13JR · pg. 40  
Embroidered Backpack
- R Loose Gear Top**  
SMLSS1 · pg. 34  
Sublimated Workout Shirt



# STOCK SINGLETS



## THE RACERBACK

**LW790KC • Stock Women's Singlet**  
Our signature women's singlet, The Racerback is made with our premium Lycra material and looks great screen printed! See page 23 for custom pricing.  
**LIST \$55.00** Web \$43.00 Sz. XS-XL



SCARLET



BLACK



ROYAL



NAVY

## COMPRESSION GEAR® LYCRA FABRIC

All of our Compression Gear® is constructed from the finest athletic Lycra fabric on the planet! Leave it blank, or see customization options and pricing on page 23. Wrestle with The Best!

## THE RELENTLESS

**L7943J • Stock Singlet**  
Our most popular Compression Gear® singlet features rugged construction and timeless quality at the lowest price. Custom color combos available, call for details.  
**LIST \$49.90** Web \$38.95 Sz. XXXS-XXXL



ROYAL

NAVY

DARK GREEN

PURPLE

MAROON

BLACK

GRAY

WHITE



## THE GUILLOTINE

**LCAC43J • Stock Singlet w/Side Panels**  
Our exclusive side panel design gives this singlet an eye catching appearance while our Compression Gear® fabric provides durability for the long haul. Available in custom colors, call for details. Looks great blank, or see page 23 for screen print options and pricing.  
**LIST \$63.00** Web \$49.00 Sz. XXXS-XXL



BLACK / LIGHT GOLD



BLACK / GRAY



BLACK / ORANGE



BLACK / SCARLET



## THE COLLEGIATE

**L7443J • Stock Singlet w/Rib-Knit Cuffs**  
The Collegiate offers the design, construction and performance made popular by many of today's top universities, in an affordable stock option. See page 23 for information about adding custom screen printing.  
**LIST \$69.00** Web \$50.00 Sz. XXXS-XXXL



BLACK / LIGHT GOLD



NAVY / LIGHT GOLD



ORANGE / BLACK



ROYAL / WHITE



SCARLET / WHITE



TWO SINGLET IN ONE!



## THE RESPOND

**RWBKT86J • Stock Reversible Women's Singlet**  
Stock women's reversible Lycra singlet. Royal on one side, scarlet on the other - it's like two singlets in one! Singlet can be spot sublimated, but only with black ink.  
**LIST \$84.00** Web \$64.00 Sz. XS-XL

## THE REVERSAL

**RS86J • Stock Reversible Singlet**  
Two Singlets in one, great for tournaments! Legal for Freestyle, Greco, and Folkstyle. Singlet can be spot sublimated, but only with black ink. .  
**LIST \$82.00** Web \$60.00 Sz. XXXS-XXXL





GRAY  
BLACK  
WHITE / BLACK

**BRDS4 • Stock Board Shorts**  
The stock version of our wildly popular wrestling competition board shorts. These are the perfect compliment to our stock uniform top, and are completely legal for competition use. Graphics can be screen printed on all colors of shorts while the gray and white shorts can also be spot-sublimated. White shorts have a black belt area.  
**LIST \$49.90** Web \$39.00 Sz. YS-YL, S-XXL



NAVY  
BLACK

**LWS43 • Stock Compression Shorts**  
Our Compression Gear® shorts are top performers whether on the mats or in the workout room. Legal for use, with our compression top, in a 2-piece uniform kit. Comes in navy or black with custom colors available upon request.  
**LIST \$34.00** Web \$27.00 Sz. XS-XXL



BLACK ROYAL  
SCARLET NAVY

**BRDSP7 • Stock Board Shorts <sup>w/</sup>Side Panels**  
A new spin on our popular stock microfiber wrestling shorts, now available with side panels! Take advantage of the large, sewn-in panel to proudly display your team name. Available in 4 body colors, each with the same white panel. See page 23 for customization pricing.  
**LIST \$52.00** Web \$41.00 Sz. YS-YL, S-XXL



**BDUSS1 • Stock Compression Top**  
This Compression Gear® top is the cornerstone of your 2-piece uniform kit. It acts as a second skin, increasing power and reducing fatigue. It features our MXS® fabric technology which wicks moisture away from the body, increasing comfort and providing a performance advantage.  
**LIST \$45.00** Web \$35.50 Sz. YL, S-XXL



SCARLET



ROYAL



NAVY



BLACK

**COMPRESSION  
GEAR®**  
LYCRA FABRIC

All of our Compression Gear® can be customized, but looks great blank as well! See page 23 for custom details and pricing.



WHITE  
BLACK  
SCARLET  
ROYAL



**J39 • Stock Compression Briefs**  
Compression Gear® Briefs, 4 colors above  
**LIST \$29.90** Web \$23.00 Sz. XXS-XXL



**L2143 • Stock Compression Tights**  
These Compression Gear® tights can be worn as part of your uniform kit. Come with stirrups, per competition rules. Available in navy or black.  
**LIST \$55.80** Web \$44.00 Sz. XXS-XXL





## THE PINNACLE

The ultimate in customization, our newest warm-up is everything you'd expect. It's tough enough to stand up to any pre-match activities, yet stylish enough to really stand out on the Podium after your tournament. Jacket and pants sold separately.

**WSJR24 • Sublimated Warm-Up Jacket**

**LIST \$70.00** Web \$55.00 Sz. YS-YL, S-XXXL

**WSPR24 • Sublimated Warm-Up Pants**

**LIST \$50.00** Web \$39.00 Sz. YS-YL, S-XXXL



## CLASSIC WARM-UP

**WJ20065 • Custom Rib Knit Warm-Up Jacket**

Warm-up jacket with rib-knit inserts. Can be a full-zip with slash pockets or a quarter-zip with a muff pocket.

**LIST \$168.00** Web \$130.00 Sz. YS-YL, S-XXXL

**WJERF65 • Custom Warm-Up Jacket**

Full-zip Jacket with Raglan sleeves, elastic cuffs/waist.

**LIST \$155.00** Web \$120.00 Sz. YS-YL, S-XXXL

**WPNEB65 • Custom Warm-Up Pants w/Side Braid**

Ultra-thick Microfiber pants with rib-knit side braid.

**LIST \$131.50** Web \$100.00 Sz. YS-YL, S-XXXL

**WPSL65 • Custom Warm-Up Pants**

Ultra-thick solid Microfiber pants with a soft mesh liner.

**LIST \$124.00** Web \$97.00 Sz. YS-YL, S-XXXL



\* Several more styles of Custom Warm-Ups Available on our website



## THE FREESTYLE

**WS4711 • Stock Warm-Up Set**

Ultra-soft poly terry fabric with 3% spandex for greater movement and durability. Contrasting white piping and striping. Tapered perma-tuck legs, with panels for superior range of motion. Sold in sets.

**LIST \$113.00** Web \$88.50 Sz. YS-YL, S-XXXL



## THE PODIUM

**WS7593 • Stock Warm-Up Set**

Taking the podium looking your best in this classic retro-inspired look! Made with durable brushed interlock fabric and contrasting white piping. Zippered pockets throughout with leg zippers and draw cords on both jacket and pants. Sold as a set only.

**LIST \$99.00** Web \$76.50 Sz. YS-YL, S-XXXL







GREY



Cliff Keen and drirelease® two great brands collaborating on a new line of performance apparel engineered for wrestling! This gear will change the way you dress for working out.

## DRIRELEASE® SHORT SLEEVE

### TDRI3 • Performance Shirt

The TDRI 3.0 is made with a cotton/poly blend that is soft, moisture wicking, and tough as nails. It has technical flat-lock seams that provide added strength and it looks great customized with your team's logo! It's made with FRESHGUARD® to help control odor and is moisture-wicking to help regulate body temperature.

**LIST \$26.50** Web \$21.00 Sz. YS-YL, S-XXXL



NAVY

WHITE

BLACK

## DRIRELEASE® SHORTS

### TDRI3ST • Performance Short

These shorts set the new bar in performance gear. They're made with FRESHGUARD® to help control odor and are moisture-wicking to help regulate body temperature. They are durable yet comfortable, featuring an extra soft cotton/poly blend. To top it all off, they are designed to dry up to 4X quicker than the alternatives!

**LIST \$26.50** Web \$21.00 Sz. YS-YL, S-XXXL



BLACK

NAVY

GREY



## DRIRELEASE® LONG SLEEVE

### TDRI3LS • Performance Shirt

The long sleeved brother to our TDRI 3.0 is just as comfortable and durable. Made for wrestlers, with its flat-lock durability and velvet-soft comfort. It's made with FRESHGUARD® to help control odor and is moisture-wicking to help regulate body temperature. Fully customizable with your team's graphics.

**LIST \$29.90** Web \$23.50 Sz. YS-YL, S-XXXL



BLACK

GREY

WHITE

NAVY





## SUBLIMATED QUARTER-ZIP

**SCKQZP • Custom Pullover**

Stand out in a crowd in our fully-sublimated ¼-zip pullover. This is wrestling apparel taken to the next level. Ultra-soft and wearable, this 100% poly fleece was designed to be tough yet comfortable.

**LIST \$85.00** Web \$66.50 Sz. YS-YL, S-XXXL



SMLS1

SMLS2

## MXS® TRAINING TOP

Full coverage sublimation makes these training shirts a one-of-a-kind winner. Our MXS® Loose fabric features moisture-wicking, light "closed hole mesh" fabric. Their anti-microbial fabric finish prevents odors and the Flat-Lock stitching adds durability. Available with both long and short sleeves.

**SMLS1 • Custom Short Sleeve Shirt**

**LIST \$59.90** Web \$47.00 Sz. YS-YL, S-XXXL

**SMLS2 • Custom Long Sleeve Shirt**

**LIST \$67.00** Web \$52.50 Sz. YS-YL, S-XXXL



## MXS® WOMENS V-NECK

**SWLSSV1 • Custom Women's Training Top**

Made with our MXS® Loose fabric, this top has full coverage graphics to show off your team spirit! Comfortable yet durable and designed to fit the female form. Hit the gym with pride in our custom v-neck.

**LIST \$59.90** Web \$47.00 Sz. YS-YL, S-XXXL

AVAILABLE WITH OR  
WITHOUT BACK AND  
SIDE POCKETS!



SBRDS5



SBRDS4

## SUBLIMATED HOODIE

**SCKHOOD • Custom Hooded Sweatshirt**

Both coaches and athletes will love this fully-sublimated sweatshirt! Take customization to the next level while enjoying a top that was to be tough and warm, yet lightweight and comfortable.

**LIST \$87.00** Web \$68.00 Sz. YS-YL, S-XXXL

## TRAINING SHORTS

Made with our 2-ply Performance Poly fabric, these shorts have a wider, longer leg to increase your range of motion while training. Make a statement with our full-coverage sublimation, available with or without pockets.

**SBRDS4 • Custom Training Board Shorts**

**LIST \$69.90** Web \$55.00 Sz. YS-YL, S-XXXL

**SBRDS5 • Custom Pocketed Board Shorts**

**LIST \$72.00** Web \$56.50 Sz. YS-YL, S-XXXL





## WOMEN'S POLO

### SWPOLO • Custom Polo Shirt

As comfortable as it is customizable, our women's polo is made from MXS® fabric and engineered to fit a female frame. Look your best and support your team whether coaching, working, or relaxing.

**LIST \$66.00** Team \$49.50 Sz. XS-XXL

## RAGLAN POLO

### SCKPOLO2 • Custom Polo Shirt

An alternative take on the polo, this Poly Performance Fabric garment features raglan sleeves that extend to the neck and back. Perfect for coaches who like looking sharp and showing school spirit.

**LIST \$66.00** Team \$49.50 Sz. XS-XXL



BACK

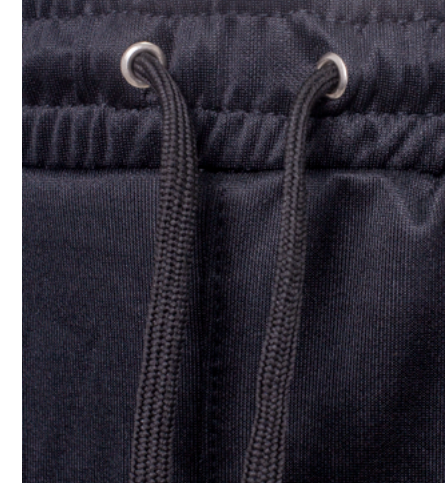


## COACH'S POLO

### SCKPOLO • Custom Polo Shirt

Our standard coach's polo, this shirt features set-in cap sleeves. Just like it's raglan-sleeved brother, it's made from comfortable Poly Performance Fabric. Best of all, it's fully sublimated and ready to show off your team's colors!

**LIST \$66.00** Team \$49.50 Sz. XS-XXL



BACK



CHAR. / NAVY



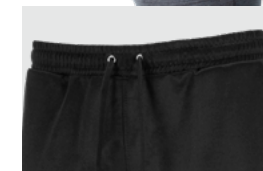
CHAR. / BLACK

## THE CAPTAIN

### WCKHZIP • Stock Half-Zip Top

This fleece pullover warm-up top is made of an exceptionally soft poly/elastane knitted fabric. Featuring a zippered chest pocket and durable reinforced stitching. The longer zipper allows for easier on and off when it's time to compete. Available with Navy or Black sleeves.

**LIST \$59.00** Team \$44.50 Sz. S-XXL



BLACK



NAVY BLUE



BACK



BLACK

## THE RANGER

### PFJKT • Stock Poly-fill Jacket

This full-zip poly-fill hybrid jacket is functional and durable. Its back body and sleeves are constructed from a knit-poly fabric, while the front body is a poly-quilted insulated woven blend. Two zippered front pockets, elastic cuffs, and a hemmed waist. Available in Black Only.

**LIST \$75.00** Team \$56.50 Sz. S-XXL

## THE JOGGER

### CKJ9282 • Stock Sweatpants

These modern sweats are made from durable compressed fleece fabric with an ultra-soft lining. With their tapered, jogger-style pant legs, they are available in both youth and adult sizes. These sweats feature two front slash pockets and one back pocket. Made for an active lifestyle, they're naturally moisture-wicking and have flat-lock stitching throughout. Available in black, navy, and heathered charcoal.

**LIST \$64.00** Team \$48.00 Sz. YS-YL, S-XXXL





CKHOODIE

CKCREW



**LIFESTYLE  
GEAR**

## XTREME FLEECE™ SWEATSHIRTS

Our XTreme Fleece™ sweatshirts are made with moisture-wicking performance fleece so you can preform your best. They are the perfect weight for training, neither too heavy nor light. Sold blank, they look unbeatable with your team's logo spot sublimated on them!

**CKHOODIE • Stock Hooded Sweatshirt**

**LIST \$69.90** Web \$55.00 Sz. YS-YL, S-XXL

**CKCREW • Stock Crew Neck Sweatshirt**

**LIST \$65.00** Web \$51.00 Sz. YM-YL, S-XXL



## XTREME FLEECE™ SHORTS

**CKSSHORT • Stock Sweat Shorts**

These are, quite simply, the best sweat shorts on the planet. Their XTreme Fleece™ material is tough, yet light-weight and comfortable. Add your team's logos and you'll instantly be the envy of any workout room.

**LIST \$42.00** Web \$29.50 Sz. YM-YL, S-XXL



## TDRI 2.0

**TDRI2 • Stock Performance Shirt**

Tried, true, and build to last, the TDRI 2.0 is made for wrestlers. You'll love the heavier fabric weight, contoured shoulders, and perfect sleeve length for those grueling workouts on and off the mats.

**LIST \$23.90** Web \$19.00 Sz. S-XXL



WOMEN'S  
GEAR

TWME1

TMEL1



HEATHERED  
GREY



HEATHERED  
BLUE

## MXS® MELANGE T-SHIRTS

These MXS® stretch melange tops are cool, comfortable and stylish. Wrestlers will love the ultra-soft, supple yet lightweight material that pulls perspiration from the body. The women's version has a v-neck while the men's has a standard collar. Heathered Grey or Blue.

**TMEL1 • Men's Stretch T-Shirt**

**LIST \$29.00** Web \$23.00 Sz. YS-YL, S-XXXL

**TWME1 • Women's V-Neck T-Shirt**

**LIST \$29.00** Web \$23.00 Sz. XS-XXL





## **BACK PACKS**

### THE BEAST

#### ABP18 • Travel Backpack

This full-featured backpack is a wrestler's best friend. Its cavernous interior will hold all your gear while still fitting in most airline overhead compartments! Spot Sublimate-able, 55cm H x 30cm L x 23cm D (38 liters)

- Large U-shaped front zipper for easy access to gear
- Padded laptop or tablet pocket
- Zippered internal pockets for travel essentials
- Spacious side pocket and water bottle pocket
- Waterproof bottom pocket for shoes and wet gear

**LIST \$93.00** MAP \$79.95



### THE BEAST JR.

#### ABP13JR • Commuter Backpack

The new Beast Jr. Backpack was designed for more everyday use than it's father, The Beast. With water-proof fabric in key locations, Jr. is the perfect size for commuting back and forth from school, to practice and home. The front pocket is designed to allow for custom embroidery. 51cm H x 30cm L x 21 cm D (32 liters)

- Same Design and Pocket Layout as The Beast
- Custom Embroidery Available on Front Pocket
- Waterproof Fabric

**LIST \$89.90** MAP \$70.00



### THE TEAM PACK

#### MBP13 • Mesh Wrestling Backpack

Show your team pride! Team Pack's extra large front pocket can be spot sublimated with full coverage graphics. (Additional charge applies.) Features two water bottle holders, roomy inner dry mesh pocket for sweaty gear, dry compartment, an ID tag, and loop for attaching your headgear. Black with Light Grey pocket.

**LIST \$35.00** Web \$27.50



### THE GEAR BAG

#### MB77 • Washable Mesh Bag

This is the ideal bag for carrying your wrestling gear, in fact you can throw it right in the wash after a workout. Cliff Keen branding on one side, team graphics can be spot sublimated on the reverse. (Additional charge applies) 19"x30" poly mesh, White only.

**LIST \$17.00** Web \$11.50







## TEAM BANNERS

Our fully sublimated team banners are vibrant, durable, and will never fade. Other unique sizes and shapes available. Contact your Cliff Keen rep. for details.

**TEAMBAN-2X3 • 2' x 3' Banner**

**LIST \$69.00** Web \$67.50

**TEAMBAN-3X5 • 3' x 5' Banner**

**LIST \$90.00** Web \$101.50

**TEAMBAN-4x6 • 4' x 6' Banner**

**LIST \$150.00** Web \$137.50



### CT11 • Corner Towel

Keep sweat in check with this ultra-absorbent towel. Can be customized with full coverage sublimation. Sized 20"x 40"

**LIST \$30.50** Web \$24.00

## THE KLEAN KANTEEN®

**CKANTEEN • 32 oz. Water Bottle**

In collaboration with Klean Kanteen®, Cliff Keen brings you its 32 ounce stainless steel, food safe and toxin-free water bottle. It won't shatter, rust, or impart any flavor. Keeps liquid cold for up to 90 hours or warm for up to 24.

**LIST \$47.90** Web \$36.95



### WC3 • Weight Chart

The first and best weight chart specifically designed for wrestling. Chronicle and monitor your wrestler's progress. Double sided, 24"x36"

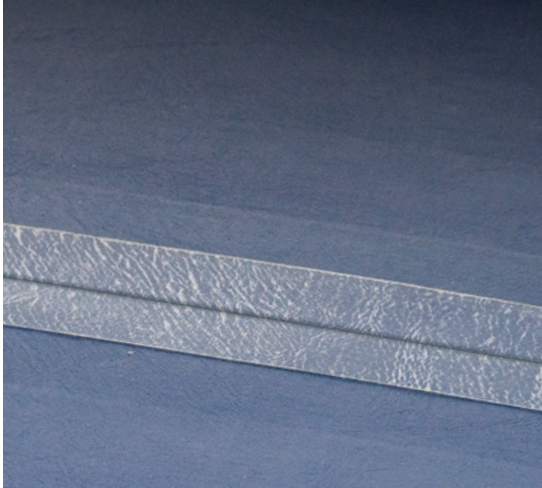
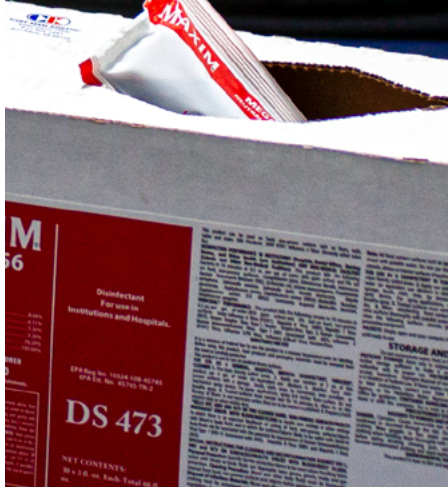
**LIST \$11.90** Web \$8.00



### SISU1.6 • SISU™ Mouth Guard

The SISU™ Aero NextGen mouth guard is only 1.6mm thick, allowing you to breath, hydrate and talk naturally. The Aero is 50% smaller than conventional guards.

**LIST \$39.95** Web \$33.00 Sz. S-L



## GORILLA GRIP MAT TAPE

The legendary adhesion of our premium mat tape will hold firm but leave no gummy residue. Reusable many times, each roll individually wrapped. 8 mils thick. Transparent. Price is per roll.

**T97-3 • 3" Tape • 24 Rolls/Case**

**LIST \$13.20** Web \$10.00 1-9 Cases

**LIST \$12.80** Web \$10.00 10+ Cases

**T97-4 • 4" Tape • 18 Rolls/Case**

**LIST \$17.60** Web \$13.50 1-9 Cases

**LIST \$17.20** Web \$13.50 10+ Cases



## NO FUNK MAT CLEANER

**MC-9 • Cleaning Solution**

Pre-measured liquid packets make four gallons solution each. MC-9 fights against infections and is effective in killing Coronavirus. 30 Packs per box.

**LIST \$97.80** Web \$69.00



### MS7 • Mat Straps

Non-gouging 'D' rings hold your mat firmly in place when rolled. Use 1 strap for every 5' width of mat. 2"x1¼"

**LIST \$17.00** Web \$13.00



## THE MAT TRANSPORTER

**MT3 • Mat Dolly**

Extra strong, reinforced transporter fits under any rolled-up mat section. Features four heavy-duty, non-marking casters. Fits through a standard doorway. One dolly will handle mat sections up to 14' wide. Two dollies will handle all large mats.

**LIST \$185.00** Web \$144.50

**WHEELS • Replacement Wheel**

Replacement caster wheel for the MT3. Rugged, durable and with a smooth, easy glide roll. Sold individually.

**LIST \$15.00** Web \$12.00



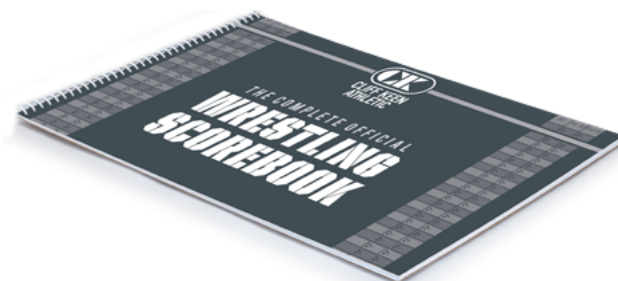




**G8 • Match Timer**  
Premium digital clock with heavy duty start/stop button. Adjustable timer counts down your meets or drills and sounds a loud alarm. Takes 4 C batteries, not included.  
**LIST \$124.50** Web \$94.00



**FLIP-A-SCORE®**  
**IM100 • Tabletop Scoreboard**  
3-panel scoreboard designed for wrestling tournaments and meets. Center panel indicates period, while color-coded, large, 5" numbers denote the score. Folds nearly flat, only 3" thick for easy carry or storage. Scores from 0-99. Dimensions: 21"x13"x11"  
**LIST \$139.80** Web \$109.50



**SB7 • Wrestling Scorebook**  
The wrestling scorebook, complete and concise. Includes NCAA and international wrestling sheets, dual meets, 17 weight classes, tournament brackets, season summaries and more. Redesigned cover for 2020.  
**LIST \$8.90** Web \$7.75



**FLIP DISC**  
Standard issue for all wrestling referees, durable and pliable. 3" Diameter, 3/16" thick, sold individually.  
**M138 • Freestyle / Greco Red & Blue**  
**LIST \$7.50** Web \$5.50  
**M139 • Folkstyle Red & Green**  
**LIST \$7.50** Web \$5.50



**ANKLE BANDS**  
Our ankle bands will outlast all the others. Made from soft vinyl that wraps around and fastens with Velcro®. Easy on and off, will not shrink or stretch. Washable. Sold as two bands, per color, in each set.  
**A5 • Folkstyle Red & Green**  
**LIST \$12.60** Web \$10.00  
**A6 • Freestyle Red & Blue**  
**LIST \$12.60** Web \$10.00



**WRISTBANDS**  
An essential tool for the wrestling referee, these bands' wide width make them easy to see by scorekeepers on the mat. 5" length, will not shrink or stretch. Set includes one wristband of each color. Washable.  
**M110 • Folkstyle Red & Green**  
**LIST \$8.90** Web \$7.00  
**M112 • Freestyle Red & Blue**  
**LIST \$8.90** Web \$7.00





IMPORTANT INFORMATION

PURCHASE INFO

Merchandise in this catalog is available through authorized sporting goods retailers. Base garment prices do not include lettering. Custom uniforms are not returnable. No order may be changed once production has begun. Custom sewn garments begin production 1 business day after order has been acknowledged. 6 piece minimum on all new custom singlet, warm-up, and stock-with-lettering orders. 12 piece minimum on some custom singlets with a knit leg cuff. 6 piece minimum on all new custom sublimation singlet orders and re-orders. For 2XL and 3XL, add 15%

RETURN INFO

If there is a discrepancy between your invoice and packing slip, please call immediately so the problem can be resolved. Cliff Keen Athletic cannot accept return shipments without a return authorization number. Return authorizations must be requested within fifteen (15) days from receipt of the shipment. We apply a fifteen percent (15%) restocking charge to all returned stock merchandise.

ORDERING INFO

Each order is acknowledged with an anticipated time frame determined by the amount of work in progress. This time frame is anticipated but not guaranteed.

CKA will not assume any additional expense required to expedite delivery, such as air mail, next-day, 2<sup>nd</sup> day or any other special delivery charges.

Due to varying rules in different conferences, Cliff Keen Athletic will not accept responsibility for the legality of uniforms.

Please note that we will not take re-orders for styles that have been out of the catalog for over one (1) year. Orders for older styles may be substituted for a sublimated singlet. Please call for details.

WASHING INFO

Washing instructions are included with every Cliff Keen uniform order. Do not dry clean screen printed or sublimated garments.

FABRIC WEIGHTS

Cliff Keen Athletic uses a wide selection of today's finest, most comfortable and durable, easy-care fabrics. Use the charts below to gauge fabric weight availability in your preferred color.

Code	Fabric	Weight
43	Compression Gear®	8.2 oz.
65	Microfiber	10 oz.
75	Heavyweight Dupont Nylon Supplex	10 oz.
96	Super Heavyweight Nylon Lycra Spandex	18 oz.

\*Fabric weights listed are per square or linear yard.

FABRIC COLORS

Here are the standard colors available in our many fine fabrics. To find out about other available fabrics or colors, call our Customer Service Department, toll-free at 800-992-0799. We'd be glad to help!

Color	43	65	75	96
Black	■ ✓	✓	✓	✓
Brown	■	✓	✓	✓
Columbia Blue	■	✓		✓
Cardinal	■	✓	✓	✓
Dark Green	■	✓	✓	✓
Light Gold	■	✓	✓	✓
Kelly Green	■	✓	✓	✓
Maroon	■	✓	✓	✓
Navy	■	✓	✓	✓
Orange	■	✓	✓	✓
Purple	■	✓	✓	✓
Royal Blue	■	✓	✓	✓
Scarlet	■	✓	✓	✓
Silver Gray	■	✓	✓	✓
Vegas Gold	■	✓	✓	✓
White	□	✓	✓	✓

\*Note: We do not use white #43 cloth for the lower portion of singlets.

KNIT PATTERNS

We offer the following patterns for our knit side braids, inserts and leg cuffs. Most colors in the above table are available. Call our Customer Service Department, toll-free at 800-992-0799 for information.



PATTERN 1



PATTERN 4



PATTERN 2



PATTERN 5

INDEX

Backpacks 40-41  
Ear Guards  
See Headgear

Girl's Gear  
See Women's Gear

Headgear  
Accessories 5, 7, 9  
Fusion® 8  
Signature® 4-5  
Tornado® 6-7

Hoodies 35, 38

Jackets 30-31, 37

Kneepads 10-11

Ladies' Gear  
See Women's Gear

Mat Care 43

Official's Gear 45

Polo Shirts 36

Score Keeping 44-45

Shorts 14-19, 28, 33, 35

Singlets  
Screen Printed 22-23  
Stock 26-27  
Sublimated 14-21

Sweatpants 37-38

T-Shirts 32-35, 39

Uniforms  
See also Singlets

Two-Piece  
Stock 28-29  
Sublimated 14-17, 19

Warm-Ups  
Custom 30  
Stock 31

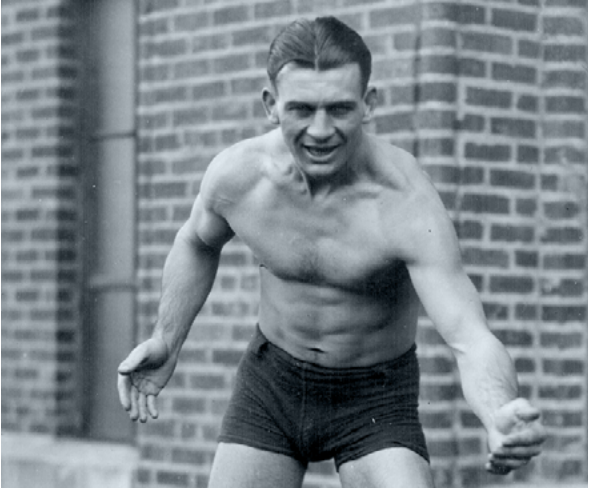
Women's Gear  
Accessories 9  
Shorts 19  
Singlets 18-19, 21, 26-27  
Tops 19, 35-36, 39

PHOTO CREDITS

Janicki, Sam  
SJanicki Photo, sjanickiphoto.com  
Front Cover, 2, 10, 14, 15, 33, Back Cover

Slater, Lawrence  
LBS Photo, lbsphoto.smugmug.com  
Front Cover, 3, 42

Rulsch, Martin  
Wikimedia Commons, CC BY-SA 4.0  
17



COACH CLIFFORD P. KEEN

As the head wrestling coach at the University of Michigan for 45 years (1925-1970), the late Cliff Keen's teams went an amazing 268-91-9, won 13 Big Ten Championships, with 68 All-Americans. Individuals he coached won 11 National Championships and 81 Big Ten Championships. When he finally retired, he was the longest tenured head coach in NCAA history in any sport.

Keen was also the offensive line coach at Michigan for 33 years. He coached the 1948 U.S. Olympic team, served on the USOC and wrote several books on the fundamentals of amateur wrestling. He was the first president of the National Wrestling Coaches Association, a Lt. Command-



er teaching hand-to-hand combat during WWII and received his law degree from Michigan. In addition, Cliff was a charter member of the National Wrestling Hall of Fame and a member of the National Sporting Goods Association Hall of Fame.

It was his invention of the wrestling headgear in 1958 that would be amongst his greatest accomplishments. Not only did this invention increase participation in wrestling by helping to protect from "cauliflower ear", it also gave birth to the company that bears his name, Cliff Keen Athletic.

We are indebted to Coach Keen's legacy. It is his sincere belief in the sport of wrestling along with his innovative spirit that continues to drive us.

CLIFF KEEN • LEGENDS OF MICHIGAN

Find out more about Coach Keen with this in-depth look at both Cliff Keen and the history of Michigan wrestling!

CKBOOK • Reference Book  
LIST \$39.99







## CLIFF KEEN ATHLETIC

[ORDERS@CLIFFKEEN.COM](mailto:ORDERS@CLIFFKEEN.COM)

(800) 992-0799

4480 VARSITY DRIVE  
ANN ARBOR, MI 48108

P.O. BOX 1447  
ANN ARBOR, MI 48103

[CLIFFKEEN.COM](http://CLIFFKEEN.COM)