

# JOIN OUR GAME

**GRINDE**  
S E R I E S



**CUSTOM  
STYLE  
PERFORMANCE**



[WWW.JOGSPORTSWEAR.COM](http://WWW.JOGSPORTSWEAR.COM)



# ***JOIN OUR GAME***

**JOG is Join Our Game -- an idea built on inclusivity, not exclusivity. We're as much about small town teams with big dreams as we are about big time teams who leave it all on the field; every time. We believe every player deserves a quality jersey with a custom look that makes them feel like a pro.**

**JOG is driven to exceed our customers expectations with a better jersey buying experience through personal interaction, complete customization, and professional, sustainable quality at a price all teams can afford. Your look, done right, fairly priced, on time -- Join our Game.**

***JOG***  
JOIN OUR GAME



# INDEX

REPLAY Series.....	1
GRINDE Series.....	2
Fabric Descriptions.....	3-4
Color Chart.....	5
Size Chart.....	6

## SPORTS

Sweeper Pro Soccer Uniforms.....	7
Cross Bar Goalie Uniforms.....	8
Soccer Uniform Patterns.....	9-12
Slam Dunk Hybrid Pro Basketball Uniforms.....	13
Tomahawk Pro Basketball Uniforms.....	14
Basketball Patterns.....	15-16
Grand Slam Pro Baseball/Softball Jerseys.....	17
Diamond Hybrid Pro Baseball/Softball Jerseys.....	18
Diamond Pro Sublimation Baseball/Softball Jerseys.....	19
Slider Baseball/Softball Pants.....	20
Baseball/Softball Patterns.....	21-23
Spike Pro Volleyball Uniforms.....	24
Volleyball Patterns - Men's cut.....	25-26
Volleyball Patterns - Women's cut.....	27-28
The Rack Pro Lacrosse Uniforms.....	29
Lacrosse Patterns.....	30
The Scrum Pro Rugby Uniforms.....	31
The Wheeling Touch Rugby Uniforms.....	32
Rugby/Touch Rugby Patterns.....	33-34
Track & Field Sprinter Pro Singlets.....	35
Track & Field Patterns.....	36
American Football Pro Uniforms.....	37

## APPAREL

Performance T-Shirts.....	38
T-Shirt Patterns.....	39-40
Performance Polos.....	41
Performance Polo Patterns.....	42-43
Performance Shorts.....	44
Performance Shorts Patterns.....	45
Performance/Soft Shell Jackets.....	46
Jacket Patterns.....	47
Everest Surge.....	48
Everest Surge Patterns.....	49
Performance Tracksuits.....	50
Performance Tracksuit Patterns.....	51
Performance Hoodie/Joggers.....	52
Performance Hoodie Patterns.....	53-54
Performance Jogger Patterns.....	55
Hats.....	56
Terms & Conditions.....	56



# Same custom product, now eco-friendly



1

We take empty PET bottles and restyle the plastic into thread.



2

Using this thread, we've developed innovative fabrics to provide more sustainable alternatives.



3

JOG Athletics is proud to be one of the major suppliers of eco-friendly products.

## REACT RENEW REPURPOSE

REPLAY is JOG's Eco Series that uses newly developed, environmentally friendly fibers made from recycled PET bottles. Specialized polymerization-spinning technologies are employed to produce a high-quality recycled PET fiber. Recycled PET bottles can help slow global warming and save our planet by reducing environmental pollution, cutting back fossil fuel and energy consumption and decreasing CO<sub>2</sub> emissions into the atmosphere.



# GRINDE

## S E R I E S



**BREW IT. SIP IT.  
WEAR IT.**

Coffee is not just for drinking anymore. It's now part of our apparel. We repurpose coffee grounds and layer them into fabrics that wick away moisture and control odor. Grinde brings a whole new meaning to your morning cup of joe.



DRY  
TOUCH



LOW  
CONDENSATION



ODOR  
CONTROL



ECO  
FRIENDLY



UV  
PROTECTION







## VaporICE Plus & Super Plus

- VI Plus - 100% Recycled Polyester (160g/m<sup>2</sup>)
  - VI Super Plus - 100% Recycled Polyester (128 g/m<sup>2</sup>)
- Eco-friendly, superior dry touch and cool comfortable fit*  
 Application - T-Shirts, Polos, Shorts, Soccer, Basketball, Volleyball, Badminton, Tennis and Golf



## Everest Power Flex Peak

- 88% Nylon, 12% Spandex
- Durable water repellent, 4-way stretch and anti UV*  
 Application - Tracksuits



## VaporICE Vertical

- 100% Recycled PET Vertical Mesh
- Wicking Treatment (157g/m<sup>2</sup>)*  
 Application - T-Shirts, Shorts, Basketball, Lacrosse and Baseball



## Power Flex Pique

- Power Flex Pique - 94% Polyester, 6% Spandex pique (160g/m<sup>2</sup>)
- Anti-bacterial and UV protection*  
*Flexible stretch, comfortable and superior wicking*  
 Application - Polos, Golf and Tennis



## VaporICE Drip

- 65% Polyester, 35% Recycled Grinde Polyester
- Polyester soft double PK fabric (160 g/m<sup>2</sup>)*  
*Fast drying, odor control, UV-Protection*  
*Eco-friendly, flexible stretch and comfortable fit*  
 Application - T-Shirts, Polos and Shorts



## Thermal Form Replay

- 100% Recycled Polyester pique fleece (250 g/m<sup>2</sup>)
- Back side brushed, shields the cold & wind*  
 Application - Jackets, Hoodies and Joggers



## VaporICE Everest

- 100% Micro Woven Polyester (110g/m<sup>2</sup>)
- Dobby weave*  
*Durable, yet soft hand feel*  
 Application - Tracksuits and Shorts



## Power Flex Yield Thermal Form

- 89.3% Micro Recycled Polyester, 10.7% Spandex
- Sanding face with brushed back fleece (285 g/m<sup>2</sup>)*  
 Application - Jackets and Joggers



## VaporICE T-Force Stretch

- VI T-Force Stretch - 100% Recycled Polyester (155 g/m<sup>2</sup>)
- Plus permanent wicking yam with mechanical stretch yam*  
*Sheer looking fabric with honeycomb texture*  
 Application - T-Shirts, Shorts, Polos and Golf



## Power Flex Mogul

- 89% Polyester, 11% Spandex (255 g/m<sup>2</sup>)
- Flexible stretch, comfortable and excellent wicking*  
 Application - Lacrosse, Volleyball, Track & Field and Rugby



## Power Flex Elite

- Power Flex - 88% Polyester, 12% Spandex
- (moisture management)*  
*Flexible stretch, comfortable and superb wicking*  
 Application - T-Shirts



## Power Flex Zorro Thermal Form

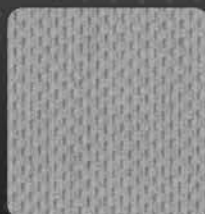
- 51% Polyester, 42% Recycled Grinde Polyester, 7% Spandex (275 g/m<sup>2</sup>)
- 4-way stretch, thermal functional PK fleece fabric*  
 Application - Jackets, Joggers and Hoodies





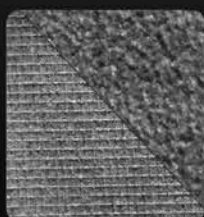
## Everest Surge

- 100% Polyester  
Water repellent, a polished, smooth finish that is lightweight yet, durable  
Application - Jackets



## Dura Light Amateur

- 100% Polyester (152 g/m2)  
Light weight yet, durable  
Application - Baseball and Lacrosse



## Everest Storm Soft Shell

- 86% Polyester, 14% Spandex (314 g/m2)  
4-way stretch, brushed back fleece, water repellent  
Application - Jackets



## Air Knit Pro

- 100% Recycled Polyester (222 g/m2)  
Constructed for durability, breathability and performance  
Application - Lacrosse



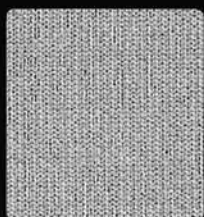
## Poly Stretch Replay

- 71.5% Recycled Polyester, 28.5% Stretch Polyester (208 g/m2)  
Quick dry, 4-way stretch  
Application - Lacrosse, Baseball Rugby and American Football (Replica)



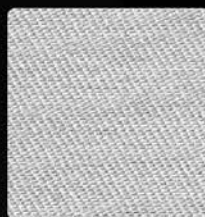
## Poly Pro-PK Replay

- 37.5% Recycled Polyester, 62.5% Polyester (270 g/m2)  
Stronger yarn count for durability  
Enhanced performance against pilling  
Application - Baseball Pants



## Pro Y Stretch

- 100% Polyester (262 g/m2)  
Quick dry, 4-way stretch  
Application - American Football



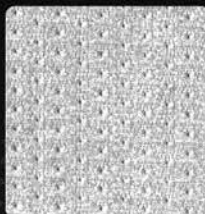
## W-Poly

- 100% Polyester (200 g/m2)  
Application - Rugby



## Poly Pro Diamond

- 100% Polyester (233 g/m2)  
Application - Baseball Pants



## Diamond Pro Mesh

- 100% Polyester (160 g/m2)  
Durable breathability  
Application - Basketball, Lacrosse, Track & Field and Baseball





PMS 3308C  
**FOREST GREEN**



PMS 7484C  
**DARK GREEN**



PMS 3425C  
**DALLAS GREEN**



PMS 365C  
**KELLY GREEN**



PMS 802C  
**NEON GREEN**



PMS 902C  
**MISSION GREEN**



PMS 648C  
**TORONTO BLUE**



PMS 2384C  
**FINLAND BLUE**



PMS 2142C  
**COLUMBIA BLUE**



PMS 2171C  
**POWDER BLUE**



PMS 319C  
**PRO BLUE GREEN**



PMS 7715C  
**TEAL**



PMS 2645C  
**LIGHT PURPLE**



PMS 3566C  
**PURPLE**



PMS 274C  
**KINGS PURPLE**



PMS 2758C  
**DARK ROYAL**



PMS 287C  
**VARSITY ROYAL**



PMS 282C  
**DARK NAVY**



PMS 212C  
**HOT PINK**



PMS 7645C  
**MAROON**



PMS 195C  
**CARDINAL**



PMS 7638C  
**49ERS RED**



PMS 201C  
**SCARLET RED**



PMS 200C  
**UNIVERSITY RED**



PMS 7417C  
**DARK ORANGE**



PMS 021C  
**ORANGE**



PMS 7549C  
**VARSITY GOLD**



PMS 7409C  
**LIGHT GOLD**



PMS 109C  
**MICHIGAN MAIZE**



PMS 102C  
**YELLOW**



PMS 7506C  
**CREAM**



PMS 7527C  
**VINTAGE CREAM**



PMS 4525C  
**LIGHT VEGAS GOLD**



PMS 468C  
**DUST GOLD**



PMS 466C  
**NUGGET GOLD**



PMS 440C  
**BROWN**



**BLACK**



PMS 7540C  
**KNIGHTS GREY**



COOL GREY 9C  
**MID GREY**



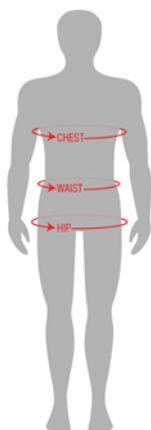
PMS 429C  
**PRO SILVER**



**WHITE**

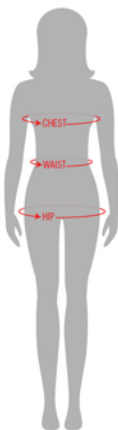


## MEN



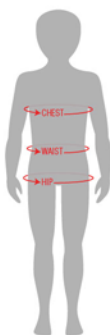
SIZE	CHEST	WAIST	HIP
AS	34.5 - 37.5	29 - 30	35.5 - 37.5
AM	37.5 - 40.5	31 - 33	38 - 41
AL	40.5 - 43.5	34 - 36	41.5 - 44
AXL	43.5 - 46.5	37 - 39	44.5 - 47.5
A2XL	46.5 - 50.5	40 - 42	48 - 51
A3XL	50.5 - 53	42.5 - 45	51.5 - 54

## WOMEN



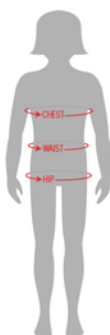
SIZE	CHEST	WAIST	HIP
AXS	31.5 - 33.5	22.5 - 25	-
AS	33.5 - 35.5	25.5 - 27.5	35.5 - 37.5
AM	35.5 - 38	28 - 30	38 - 41
AL	38.5 - 41	30.5 - 33	41.5 - 44
AXL	41.5 - 44.5	33.5 - 36	44.5 - 47.5
A2XL	44.5 - 47.5	36.5 - 38	48 - 51
A3XL	47.5 - 49	38.5 - 41	51.5 - 54

## BOYS



SIZE	CHEST	WAIST	HIP
T4	21 - 22.5	19 - 20	23 - 24
CHILD	22.5 - 24.5	20 - 21	25 - 26
YXS	24.5 - 26.5	21 - 22	27 - 28
YS	26.5 - 28.5	22 - 23	28 - 29
YM	28.5 - 30.5	24 - 25	29.5 - 31
YL	30.5 - 32.5	26 - 27	31.5 - 33
YXL	32.5 - 34.5	28 - 29	33.5 - 35

## GIRLS



SIZE	CHEST	WAIST	HIP
T4	-	-	-
CHILD	-	-	-
YXS	-	-	-
YS	25.5 - 27.5	22 - 23	28 - 29
YM	27.5 - 29.5	24 - 25	29.5 - 31
YL	29.5 - 30.5	26 - 27	31.5 - 33
YXL	-	-	-

**CHEST:** measure around the fullest part of your chest, keeping the measuring tape horizontal.

**WAIST:** measure around the smallest part of the torso area.

**HIP:** measure around the fullest part of your hip and ensure the tape is straight.





## CARMELO

Jersey #521B / Shorts #1055B

## TURIN

Jersey #1057 / Shorts #1711

JOG's Sweeper Pro jerseys and shorts allow for a fully custom look on the pitch. This REPLAY series (eco-friendly) sublimated soccer kit will keep you cool, refreshed due to the dry and comfortable fit of our 100% recycled VaporICE material.

### JERSEY & SHORTS DESCRIPTION

- Fully sublimated
- Light-weight feel and superior performance
- Superior wicking capabilities
- Elastic tape on the collar to add comfort and durability
- Custom inseams available
- Inner lining (optional)
- Full elastic waistband (50% nylon, 20% polyester & 30% spandex) with draw cord
- Men, women and youth cuts available
- Eco-friendly soccer jersey & shorts

### FABRIC CONTENT



#### Jersey

- VaporICE Super Plus (Replay Series)

#### Shorts

- VaporICE Plus (Replay Series)



## SANTIAGO

Jersey #1057B / Shorts #1711



## MUROTO

Jersey #1057B / Shorts #119



## NAZRET

Jersey #1057 / Shorts #1711



## OZARK

Jersey #1057 / Shorts #1690



## FRESNO

Jersey #1057 / Shorts #1711





## **BELMONT JERSEY #1502 / SHORTS #81**

JOG's Cross Bar goalie kits will make you look good in the box and unstoppable. This soccer jersey will keep you cool and refreshed due to the dry and comfortable fit of our 100% recycled VaporICE material.



**Goalie padding provided  
in sleeves, shoulders and  
thigh areas**

### **JERSEY & SHORTS DESCRIPTION**

- Fully sublimated
- Light-weight feel and superior performance
- Superb wicking capabilities
- Elastic tape on the collar to add comfort and durability
- Sewn in sleeve padding and shoulder padding (optional)
- Sewn in thigh padding (optional)
- Full elastic waistband  
(50% nylon, 20% polyester & 30% spandex) with draw cord
- Eco-friendly soccer jersey & shorts

### **FABRIC CONTENT**



#### **Jersey**

- VaporICE Plus (Replay Series)

#### **Shorts**

- VaporICE Plus (Replay Series)



**DOVER-G**  
Jersey #1504 / Shorts #81



**PLYMOUTH**  
Jersey #1502 / Shorts #119



**FRESNO-G**  
Jersey #1504 / Shorts #81



**TIFFIN**  
Jersey #1504 / Shorts #119





SHIRT #551 - PAVIA  
SHORTS #1711 - PAVIA



SHIRT #772B - NYON  
SHORTS #1711 - NYON



SHIRT #1056 - SUPER SONIC  
SHORTS #1711 - SUPER SONIC



SHIRT #1056 - FORLI  
SHORTS #1711 - FORLI



SHIRT #1056 - BENDIGO  
SHORTS #1711 - BENDIGO



SHIRT #1056 - JUNEAU  
SHORTS #1711 - JUNEAU



SHIRT #1056 - ODESSA  
SHORTS #1711 - ODESSA



SHIRT #1056B - MALAGA  
SHORTS #1711 - MALAGA



SHIRT #1056B - AXIM  
SHORTS #1711 - AXIM



SHIRT #1056B - FARO  
SHORTS #1711 - FARO



SHIRT #1056B - SALDUS  
SHORTS #1711 - SALDUS



SHIRT #1057 - CIDRA  
SHORTS #1711 - CIDRA



SHIRT #1057 - GENOA  
SHORTS #1711 - GENOA



SHIRT #1057 - OZARK  
SHORTS #1711 - OZARK



SHIRT #1057 - LUXOR  
SHORTS #1711 - LUXOR





SHIRT #1057 - INDIO  
SHORTS #1711 - INDIO



SHIRT #1057 - NAZCA  
SHORTS #1711 - NAZCA



SHIRT #1057 - AJO  
SHORTS #1711 - AJO



SHIRT #1057 - FRESNO  
SHORTS #1711 - FRESNO



SHIRT #1057 - NAZRET  
SHORTS #1711 - NAZRET



SHIRT #1057 - OMAHA  
SHORTS #1711 - OMAHA



SHIRT #1057 - YUMA  
SHORTS #1711 - YUMA



SHIRT #1057 - HAVANA  
SHORTS #1711 - HAVANA



SHIRT #1057 - MERLO  
SHORTS #1711 - MERLO



SHIRT #1057 - DORI  
SHORTS #1711 - DORI



SHIRT #1057B - NOVARA  
SHORTS #1711 - NOVARA



SHIRT #1057B - MUROTO  
SHORTS #1711 - MUROTO



SHIRT #1057B - BERNE  
SHORTS #1711 - BERNE



SHIRT #1057B - BOISE  
SHORTS #1711 - BOISE



SHIRT #1057B - VARNA  
SHORTS #1711 - VARNA







SHIRT #1057B - INDY  
SHORTS #1711 - INDY



SHIRT #1057B - DECATUR  
SHORTS #1711 - DECATUR



SHIRT #1057B - IRONWOOD  
SHORTS #1711 - IRONWOOD



SHIRT #1057B - NAXOS  
SHORTS #1711 - NAXOS



SHIRT #1057B - CARMELO  
SHORTS #1711 - CARMELO



SHIRT #1057B - SANTIAGO  
SHORTS #1711 - SANTIAGO



SHIRT #1057B - DOVER  
SHORTS #1711 - DOVER



SHIRT #1057B - TURIN  
SHORTS #1711 - TURIN



SHIRT #1057B - KIEL  
SHORTS #1711 - KIEL



## CROSS BAR GOALIE UNIFORMS



SHIRT #1501 - VICTORIA  
SHORTS #1711 - VICTORIA



SHIRT #1052 - BELMONT  
SHORTS #81 - BELMONT



SHIRT #1054 - TIFFIN  
SHORTS #119 - TIFFIN



SHIRT #1052 - PLYMOUTH  
SHORTS #119 - PLYMOUTH





SHIRT #02 - STREATOR - G  
SHORTS #81 - STREATOR - G



SHIRT #1052 - ZION - G  
SHORTS #81 - ZION - G



SHIRT #1052 - HILO - G  
SHORTS #1711 - HILO - G



SHIRT #1054 - SUPER SONIC - G  
SHORTS #81 - SUPER SONIC - G



SHIRT #1054 - OZARK - G  
SHORTS #81 - OZARK - G



SHIRT #1054 - FRESNO - G  
SHORTS #81 - FRESNO - G



SHIRT #1054 - HAVANA - G  
SHORTS #1711 - HAVANA - G



SHIRT #1054 - DORI - G  
SHORTS #81 - DORI - G



SHIRT #1054 - SANTIAGO - G  
SHORTS #1711 - SANTIAGO - G



SHIRT #1054 - DOVER - G  
SHORTS #81 - DOVER - G





## **STRIKE EAGLE JERSEY #516 / SHORTS #516**

JOG's Slam Dunk Pro uniforms combine the flexibility of sublimation with the tradition of Pro Tackle Twill logos and numbers. JOG's VaporICE moisture wicking Heat Removal Technology makes this the ultimate basketball kit whether you're slam-dunking or nailing threes at the buzzer.



**Pro Tackle Twill  
Logo and Numbers**

### **JERSEY & SHORTS DESCRIPTION**

- Light-weight feel and superior performance
- Enhance wicking capabilities
- Hybrid - sublimation and twill
- Pro tackle twill front logo + numbers (back / front)
- Elastic tape on the collar to add comfort and durability
- Variety of neck options
- VaporICE mesh backing (optional)
- Inner lining available
- 50% nylon, 20% poly, 30% spandex elastic waistband with draw cord
- Men, women and youth cuts available
- Eco-friendly basketball uniforms

### **FABRIC CONTENT**



- VaporICE Vertical (Replay Series)
- VaporICE Plus (Replay Series)



## **GLOBEMASTER JERSEY #778 / SHORTS #778**

JOG's Tomahawk Pro Sublimation jerseys and shorts are engineered for speed, performance and comfort. JOG's VaporICE moisture wicking Heat Removal Technology makes this the ultimate basketball kit whether you're slam-dunking or nailing threes at the buzzer.

### **JERSEY & SHORTS DESCRIPTION**

- Light-weight feel and superior performance
- Enhance wicking capabilities
- Unlimited base colors and stripes available with sublimation
- Elastic tape on the collar to add comfort and durability
- Variety of neck options
- VaporICE mesh backing (optional)
- Inner lining available
- 50% nylon, 20% poly, 30% spandex elastic waistband with draw cord
- Men, women and youth cuts available
- Eco-friendly basketball uniforms

### **FABRIC CONTENT**



- VaporICE Vertical (Replay Series)
- VaporICE Plus (Replay Series)



**DOVER**  
Jersey #799 / Shorts #799



**PHÖENIX**  
Jersey #779 / Shorts #779



**GHOSTRIDER**  
Jersey #779 / Shorts #779



**SKY WARRIOR**  
Jersey #516 / Shorts #516





SHIRT #04 - STRIKE EAGLE  
SHORTS #04 - STRIKE EAGLE



SHIRT #779 - DOVER  
SHORTS #779 - DOVER



SHIRT #713 - TRACER  
SHORTS #779 - TRACER



SHIRT #779 - INTRUDER  
SHORTS #779 - INTRUDER



SHIRT #04 - CONVAIR  
SHORTS #04 - CONVAIR



SHIRT #779 - GHOSTRIDER  
SHORTS #779 - GHOSTRIDER



SHIRT #557 - AIRCO  
SHORTS #557 - AIRCO



SHIRT #779 - BERMUDA  
SHORTS #779 - BERMUDA



SHIRT #713 - ARSENAL  
SHORTS #779 - ARSENAL



SHIRT #779 - CORONADO  
SHORTS #779 - CORONADO



SHIRT #779 - ARADO  
SHORTS #779 - ARADO



SHIRT #779 - DELTA DAGGER  
SHORTS #779 - DELTA DAGGER



SHIRT #779 - STALLIONS  
SHORTS #779 - STALLIONS



SHIRT #779 - AERO  
SHORTS #779 - AERO



SHIRT #779 - PHOENIX  
SHORTS #779 - PHOENIX



SHIRT #779 - HARPOON  
SHORTS #779 - HARPOON



SHIRT #779 - CORSAIR  
SHORTS #779 - CORSAIR



SHIRT #779 - AVRO PIKE  
SHORTS #779 - AVRO PIKE



SHIRT #779 - EXTENDER  
SHORTS #779 - EXTENDER



SHIRT #779 - GHOSTRIDER  
SHORTS #779 - GHOSTRIDER





SHIRT #779 - GLOBEMASTER - III  
SHORTS #779 - GLOBEMASTER - III



SHIRT #779 - VOODO  
SHORTS #779 - VOODO



SHIRT #779 - VOYAGER  
SHORTS #779 - VOYAGER



SHIRT #779 - FIREBALL  
SHORTS #779 - FIREBALL



SHIRT #779 - SKY MASTER  
SHORTS #779 - SKY MASTER



SHIRT #779 - SUPER SONIC  
SHORTS #779 - SUPER SONIC



SHIRT #779 - AVIA - 23  
SHORTS #779 - AVIA - 23



SHIRT #779 - PHANTOM - II  
SHORTS #779 - PHANTOM - II



SHIRT #779 - GLOBEMASTER  
SHORTS #779 - GLOBEMASTER



SHIRT #779 - NIGHTHAWK  
SHORTS #779 - NIGHTHAWK



SHIRT #779 - MIG - 33  
SHORTS #779 - MIG - 33



SHIRT #779 - ASCENDER  
SHORTS #779 - ASCENDER



SHIRT #779 - SHADOW GAZER  
SHORTS #779 - SHADOW GAZER



SHIRT #779 - SKY RAIDER  
SHORTS #779 - SKY RAIDER



SHIRT #779 - STARLIFTER  
SHORTS #779 - STARLIFTER



SHIRT #1503 - PROWLER  
SHORTS #04 - PROWLER



SHIRT #779 - CESSNA-24  
SHORTS #779 - CESSNA-24



SHIRT #04 - SKY HAWK  
SHORTS #04 - SKY HAWK



SHIRT #04 - SKY WARRIOR  
SHORTS #04 - SKY WARRIOR



SHIRT #779 - BERLINER  
SHORTS #779 - BERLINER





## **STYLE#426D - EXPRESS**

**3 color placket striping and 3 color sleeve striping**

JOG's Grand Slam Pro baseball/softball jersey is breathable, light-weight, yet durable. Throw on this jersey to keep you feeling cool and energized so you can swing for the cycle, dive for that shoestring catch or throw that perfect game!



**Pro Twill Logos and Numbers**

### **DESCRIPTION**

- Pro Twill appliques, numbering, logo and lettering
- Light-weight feel and superior performance
- Superior wicking capabilities
- Elastic tape on the collar to add comfort and durability
- Mesh inserts on the side panels (optional)
- Full button, v-neck, two button style options
- Men, women, and youth cuts available

### **FABRIC CONTENT**

- Dura Light Amateur
- Diamond Pro Mesh (for side panels or back side)



**STYLE#426B - T-BONES**



**STYLE #1729 - EXPO**



**STYLE #2322 - CRUSHERS**



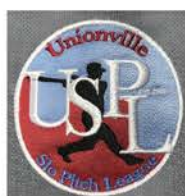
**STYLE #832 - ISOTOPES**



## **STYLE#426 - MINERS**

**2 color placket striping and 2 color sleeve striping**

JOG's Diamond Pro Hybrid baseball/softball jersey (sublimation + Pro Twill appliques) is breathable, light-weight, yet durable. Throw on this jersey to keep you feeling cool and energized so you can swing for the cycle, dive for that shoestring catch or throw that perfect game!



**Pro Twill Logos and Numbers**

**Sublimated**

### **DESCRIPTION**

- Sublimated jersey with Pro Twill appliques
- Light-weight feel and superior performance
- Enhance wicking capabilities
- Elastic tape on the collar to add comfort and durability
- Mesh inserts on the side panels and back side (optional)
- Fully sublimated baseball jersey
- Full button, v-neck, two button style options
- Men, women, and youth cuts available

### **FABRIC CONTENT**



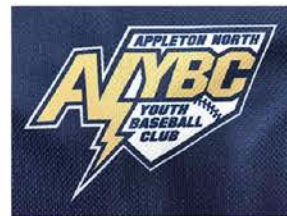
- Dura Light Amateur
- VaporICE Vertical Mesh (Replay Series)
- Poly Stretch Replay (Replay Series)
- Diamond Pro Mesh (for side panels or back side)





## **BASEBALL STYLE #426D - CHUKARS SOFTBALL STYLE #1403 - BARON**

JOG's Diamond Pro sublimation baseball/softball jersey is breathable, light weight, yet durable. Throw on a Diamond Pro jersey and maximize your game feeling cool and energized to swing for the cycle, dive for that shoestring catch or throw that perfect game!



**Unlimited Graphics  
and Logos**

### **DESCRIPTION**

- Light-weight feel and superior performance
- Superior wicking capabilities
- Elastic tape on the collar to add comfort and durability
- Mesh inserts on the side panels (optional)
- Fully sublimated baseball jersey
- Full button, v-neck, or two button style options
- Men, women, and youth cuts available

### **FABRIC CONTENT**



- Dura Light Amateur
- VaporICE Vertical Mesh (Replay Series)
- Poly Stretch Replay (Replay Series)
- Diamond Pro Mesh (for side panels or back side)



STYLE #1569 - TIDES



STYLE #426B - SENATORS



STYLE #426 - ADMIRALS



STYLE #1875 - STRIPERS



STYLE #1875 - DEVILS



## STYLE #1810 - DRILLERS (PIPING 1 CM)

JOG's baseball/softball pants (and shorts) deliver breathability and comfort on the diamond. Their midweight, durable construction are tailored to keep you dry and performing at your best on game day.

### DESCRIPTION

- Mid-weight knit fabric that delivers game day comfort and superior performance
- Tapered pro style belt loops
- Dual-snap waistband and zip fly
- Sublimated pants optional
- 50% nylon + 20% polyester + 30% spandex elastic waistband
- Elastic, velcro and open bottom hems (optional)
- Men, women and youth cuts available

### FABRIC CONTENT



- Poly Pro PK
- Poly Stretch Replay (Replay Series)
- Poly Pro Diamond



STYLE - SLIDER SHORTS



STYLE #2037 - KNICKERS  
(Piping 1 cm)



STYLE #702D - SPINNERS





STYLE #1810 - DRILLERS  
(Piping 1/8 in)



## BASEBALL JERSEY PATTERNS - MEN'S CUT (also available in women and youth cuts)



SHIRT #426B - SENATORS  



SHIRT #426B - MINERS  



SHIRT #426B - EXPRESS  



SHIRT #426B - BOOMERS  



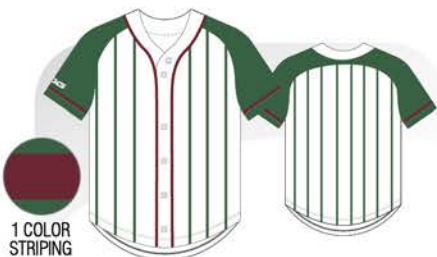
SHIRT #426B - NATURALS  



SHIRT #426B - T-BONES  




SHIRT #426B - YARDBIRDS 



SHIRT #426B - CLIPPERS 



SHIRT #426B - HOPPERS 



SHIRT #426D - REDHAWKS 



SHIRT #426D - CAPITALES 



SHIRT #426D - TRAVELERS 



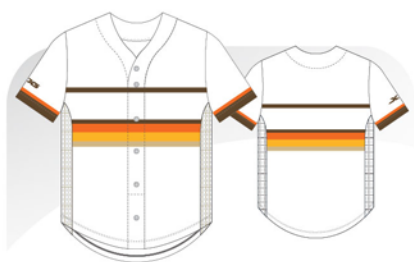
SHIRT #426D - DOVER  



SHIRT #426D - CHUKARS 



SHIRT #426D - STRIPERS 



SHIRT #426D - LE ROYAL



SHIRT #832 - ISOTOPES



3 COLOR STRIPING

SHIRT #880 - BANDITS



SHIRT #1569 - TIDES



SHIRT #1574 - ACES



3 COLOR STRIPING

SHIRT #1574 - BISONS



1 COLOR STRIPING

SHIRT #1574 - ROCKERS



SHIRT #1729 - EXPO



3 COLOR STRIPING

SHIRT #1875 - DEVILS

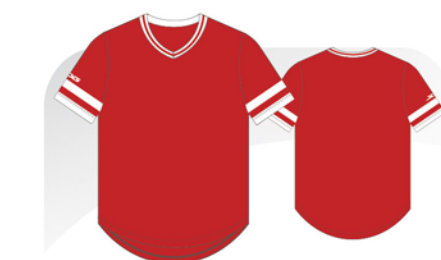


SHIRT #2025 - ADMIRALS



1 COLOR STRIPING

SHIRT #2025 - MISSIONS



SHIRT #2322 - CRUSHERS



## BASEBALL JERSEY PATTERNS - WOMEN'S CUT (also available in men and youth cuts)



SHIRT #1403 - BARON



3 COLOR STRIPING

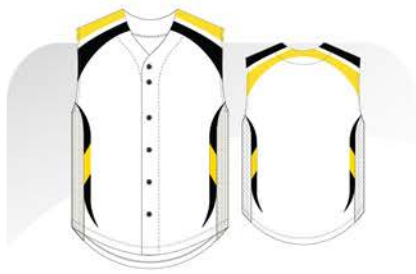
SHIRT #1403 - CLIPPER



SHIRT #1403 - MATRIX







SHIRT #1403 - TURIN



SHIRT #1403 - SWIFTER



SHIRT #1403 - ROGUE



SHIRT #1403 - DOVER



SHIRT #1403 - STRIPERS



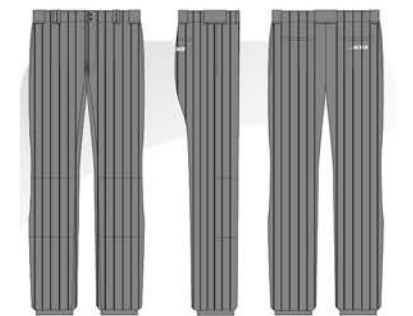
SHIRT #607 - SALTILLO



## BASEBALL / SOFTBALL PANTS PATTERNS



PANTS #702 - CLASSIC



PANTS #702 - CORNBELTER



PANTS #702B - CHASERS



1 cm.  
0.5 in.  
1 cm.



PANTS #702D - SPINNERS



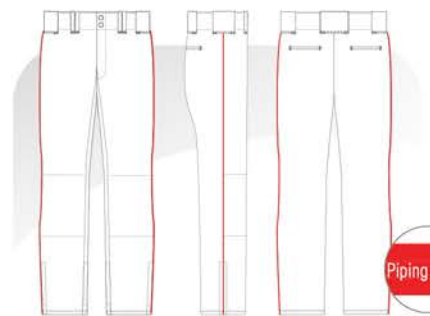
Piping 2 in  
1 cm



PANTS #1810 - DRILLERS



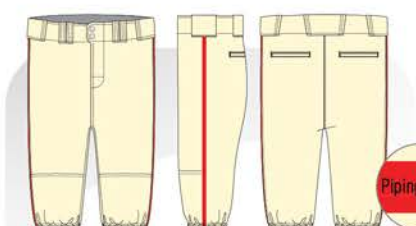
Piping 1 cm



PANTS #1935 - SMOKIES



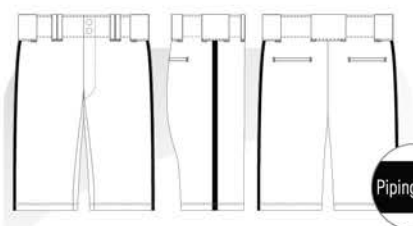
Piping 1/8 in



PANTS #2037 - KNICKERS



Piping 1 cm



SLIDER SHORTS



Piping 1 cm



**MAZO**  
SHIRT #1059 / SHORTS #119

**TOCO CLASSIC-VW**  
SHIRT #1902 / SHORTS #777

JOG's Spike Pro high-performance volleyball uniforms are fully sublimated featuring Heat Removal Technology (HRT). Our Replay Series (eco-friendly) materials provide increased comfort and breathability and complete range of motion for all movements at the beach or on the court.

## JERSEY & SHORTS DESCRIPTION

- Fully sublimated
- Light-weight feel and superior performance
- Enhance wicking capabilities
- Elastic tape on the collar to add comfort and durability
- Inner lining (optional)
- Spandex shorts (optional)
- Full elastic waistband with draw cord  
(50% nylon, 20% polyester & 30% spandex)
- Men, women and youth cuts available
- Eco-friendly volleyball jersey & shorts

## FABRIC CONTENT



### Jersey

- VaporICE Super Plus (Replay Series)

### Shorts

- VaporICE Plus (Replay Series)
- Power Flex Mogul



**CORAL**  
Jersey #1054 / Shorts #1055



**DESTIN**  
Jersey #1054 / Shorts #953



**MANZANITA**  
Jersey #1056B / Shorts #1690



**REDONDO**  
Jersey #1059 / Shorts #1040B



**MORRO**  
Jersey #1059B / Shorts #119



## SPIKE PRO VOLLEYBALL UNIFORMS - MEN'S CUT - SLEEVELESS



SHIRT #1059 - MAZO  
SHORTS #119 - MAZO



SHIRT #1059 - BELMAR  
SHORTS #119 - BELMAR



SHIRT #1059 - SALVO  
SHORTS #1711 - SALVO



SHIRT #1059 - HERMOSA  
SHORTS #1711 - HERMOSA



SHIRT #1059B - MORRO  
SHORTS #119 - MORRO



SHIRT #1059B - SABAL  
SHORTS #119 - SABAL



SHIRT #1059 - NEWPORT  
SHORTS #119 - NEWPORT



SHIRT #1059 - ENCINITAS  
SHORTS #1711 - ENCINITAS



SHIRT #1059 - SUPER SONIC  
SHORTS #1711 - SUPER SONIC



SHIRT #1059 - REDONDO  
SHORTS #1040B - REDONDO



SHIRT #1047 - LAGOS  
SHORTS #1040 - LAGOS



SHIRT #1059B - VENICE  
SHORTS #119 - VENICE



## SPIKE PRO VOLLEYBALL UNIFORMS - MEN'S CUT - SHORT SLEEVE



SHIRT #883 - SILOSO  
SHORTS #119 - SILOSO



SHIRT #1056 - xxxxxx  
SHORTS #1040B - xxxxxx



SHIRT #1056B - SOLANA  
SHORTS #1711 - SOLANA



## SPIKE PRO VOLLEYBALL UNIFORMS - MEN'S CUT - SHORT SLEEVE



SHIRT #1056B - MANZANITA  
SHORTS #1690 - MANZANITA



SHIRT #1056B - CONCHA  
SHORTS #1711 - CONCHA



SHIRT #1056B - BANDON  
SHORTS #1690 - BANDON



SHIRT #1057 - TURIN-R  
SHORTS #1711 - TURIN-R



SHIRT #1057 - INDIGO  
SHORTS #1711 - INDIGO



SHIRT #1057B - POMONA  
SHORTS #1040 - POMONA



SHIRT #1057B - VERO  
SHORTS #1711 - VERO



SHIRT #1057B - FAROS  
SHORTS #1711 - FAROS



SHIRT #1057B - KALIKO  
SHORTS #1033 - KALIKO



SHIRT #1057B - SONA  
SHORTS #1040 - SONA



SHIRT #1057B - TENNO  
SHORTS #119 - TENNO



SHIRT #1057B - DOVER  
SHORTS #1711 - DOVER



SHIRT #1057B - SOUTHPORT  
SHORTS #1711 - SOUTHPORT



SHIRT #1057B - KARON  
SHORTS #1711 - KARON



SHIRT #1564 - CORAL  
SHORTS #119B - CORAL





## SPIKE PRO VOLLEYBALL UNIFORMS - WOMEN'S CUT - SHORT SLEEVE



SHIRT #1054 - SALEM  
SHORTS #119 - SALEM



SHIRT #1054 - PONCE  
SHORTS #1055 - PONCE



SHIRT #1054 - CAPIRA  
SHORTS #1055 - CAPIRA



SHIRT #1054 - VERO  
SHORTS #1055 - VERO



SHIRT #1054 - SONA  
SHORTS #1055 - SONA



SHIRT #1054 - SELENA  
SHORTS #1055 - SELENA



SHIRT #1054 - DESTIN  
SHORTS #953 - DESTIN



SHIRT #1054 - TIWI  
SHORTS #1055 - TIWI



SHIRT #1054B - INDIGO  
SHORTS #777 - CLASSIC-VW



SHIRT #1054 - FAROS  
SHORTS #1055 - FAROS



SHIRT #1054 - MAZO  
SHORTS #119 - MAZO



SHIRT #1054 - BELMAR  
SHORTS #119 - BELMAR



SHIRT #1902 - UERO  
SHORTS #1055 - UERO



SHIRT #1902 - TOCO  
SHORTS #777 - CLASSIC-VW



SHIRT #1054 - CORAL  
SHORTS #1055 - CORAL

## SPIKE PRO VOLLEYBALL UNIFORMS - WOMEN'S CUT - SHORT SLEEVE



SHIRT #521 - TURIN-R  
SHORTS #777 - TURIN-R



SHIRT #1054 - KALIKO  
SHORTS #1055B - KALIKO



SHIRT #1054 - POMONA  
SHORTS #1055 - POMONA



## SPIKE PRO VOLLEYBALL UNIFORMS - WOMEN'S CUT - SLEEVELESS



SHIRT #578 - CERROS  
SHORTS #578 - CERROS



SHIRT #1053 - MUARA  
SHORTS #1055- MUARA



SHIRT #1053 - RIO  
SHORTS #777 - CLASSIC-VW



SHIRT #1053 - MORRO  
SHORTS #777 - CLASSIC-VW



SHIRT #1053 - NEWPORT  
SHORTS #119 - NEWPORT



SHIRT #1053 - REHOBOTH  
SHORTS #777 - CLASSIC-VW



## SPIKE PRO VOLLEYBALL UNIFORMS - WOMEN'S CUT - LONG SLEEVE



SHIRT #562 - MENDOCINO  
SHORTS #1055 - MENDOCINO



SHIRT #1743 - LIDO  
SHORTS #777 - CLASSIC-VW



SHIRT #1743 - RINCON  
SHORTS #777 - CLASSIC-VW



SHIRT #1743 - AVALON  
SHORTS #1055 - AVALON



SHIRT #1743 - BIANCA  
SHORTS #777 - CLASSIC-VW



SHIRT #1743 - ORCHID  
SHORTS #777 - CLASSIC-VW







## MEN'S CUT

### LAUNCHER

SHIRT #2043 / SHORTS #2044



## WOMEN'S CUT

### HOOVER

SHIRT #2362 / SKIRT #2363

JOG's fully sublimated, high performance lacrosse uniforms allow for precise color matching and spirited designs. Each uniform is designed using lightweight, breathable and durable materials - suitable for field or box play.

## FEATURES

- Fully sublimated
- Light-weight feel and superior performance
- Elastic tape on the collar to add comfort and durability
- Mesh inserts on back or side panels (optional)
- Men, women and youth cuts available
- Upgrade to Pro Tackle Twill embroidery of logos and lettering (optional)

## FABRIC CONTENT



- Dura Light Amateur
- Air Knit Pro (Replay Series)
- VaporICE Plus (Replay Series)
- VaporICE Vertical (Replay Series)
- Poly Stretch (Replay Series)
- Power Flex Mogul



## SWARMER

Jersey #033 / Shorts #034



## SPIDER

Jersey #033 / Shorts #034



## LEGION

Jersey #033 / Shorts #034



## ENGINEER

Jersey #2045 / Shorts #2046

## THE RACK PRO LACROSSE UNIFORMS - MEN'S CUT



SHIRT #2043 - LAUNCHER  
SHORTS #2044 - LAUNCHER



SHIRT #2045 - ENGINEER  
SHORTS #2046 - ENGINEER



SHIRT #033 - SPIDER  
SHORTS #034 - SPIDER



SHIRT #033 - SWARMER  
SHORTS #034 - SWARMER



SHIRT #033 - LEGION  
SHORTS #034 - LEGION



SHIRT #033 - BARRAGE  
SHORTS #034 - BARRAGE



SHIRT #033 - TRIPLE THREAT  
SHORTS #034 - TRIPLE THREAT



SHIRT #033 - SPHERE  
SHORTS #034 - SPHERE



SHIRT #2314 - HOUNDER  
SHORTS #2315 - HOUNDER



## THE RACK PRO LACROSSE UNIFORMS - WOMEN'S CUT



SHIRT #2362 - HOOVER  
SHORTS #2363 - HOOVER



SHIRT #2362 - COVER  
SHORTS #2363 - COVER



SHIRT #2362 - PEARLS  
SHORTS #2363 - PEARLS



SHIRT #2362 - MIDOIE  
SHORTS #2363 - MIDOIE



SHIRT #2362 - KAYAK  
SHORTS #2363 - KAYAK



SHIRT #2362 - PLUNGER  
SHORTS #2363 - PLUNGER







## **ELUSIVE** **JERSEY #1400 / SHORTS #1436**

JOG's custom Rugby uniforms are designed for performance and comfort while combating wear and tear during play. Whether you're driving to the goal line or fighting off a defender, the "Scrum Pro" uniform will maximize your performance on the pitch.

### **JERSEY & SHORTS DESCRIPTION**

- Fully sublimated
- Flexible stretch
- Excellent wicking capabilities
- Elastic tape on the collar to add comfort and durability
- Custom sleeves option (cap or full sleeves)
- Custom neck option
- Custom inseams available
- Athletic fit
- Inner lining (optional)
- Full elastic waistband with draw cord (50% nylon, 20% polyester & 30% spandex)
- Men and youth cuts available
- Eco-friendly rugby jersey & shorts

### **FABRIC CONTENT**



#### **Jersey**

- Poly Stretch Replay (Replay Series)

#### **Shorts**

- W-Poly



**SENTINEL**  
Jersey #1400 / Shorts #1436



**KOROVIN**  
Jersey #1400 / Shorts #1436



**SPURR**  
Jersey #1903 / Shorts #1436



**HIGHLANDER**  
Jersey #1903 / Shorts #1436



## **RIMO II** **JERSEY #1053 / SHORTS #1055**

JOG's fully sublimated, high-performance touch rugby uniforms are produced using durable, yet lightweight and breathable materials. Whether driving to the goal or fighting off a defender, each uniform will maximize your performance on the pitch.

### **JERSEY & SHORTS DESCRIPTION**

- Fully sublimated
- Light-weight feel and superior performance
- Flexible stretch
- Elastic tape on the collar to add comfort and durability
- Custom sleeves option (cap or full sleeves)
- Custom neck option
- Athletic fit
- Inner lining (optional)
- Full elastic waistband with draw cord (50% nylon, 20% polyester & 30% spandex)
- Women and youth cuts available
- Eco-friendly rugby jersey & shorts

### **FABRIC CONTENT**



#### **Jersey**

- VaporICE Super Plus (Replay Series)

#### **Shorts**

- VaporICE Plus (Replay Series)
- Power Flex Mogul



**JALYA**  
Jersey #1219 / Shorts #1055



**NEBO**  
Jersey #1053B / Shorts #1055



**BONA**  
Jersey #1219 / Shorts #1055



**LOA**  
Jersey #1053B / Shorts #777



## THE SCRUM PRO RUGBY UNIFORMS



SHIRT #1400 - ANTORA  
SHORTS #1436 - ANTORA



SHIRT #1903 - SPURR  
SHORTS #1436 - SPURR



SHIRT #1903 - TAKU  
SHORTS #1436 - TAKU



SHIRT #1400 - SPECTRE  
SHORTS #1436 - SPECTRE



SHIRT #1400 - ELUSIVE  
SHORTS #1436 - ELUSIVE



SHIRT #1903 - DEFIANT  
SHORTS #2319 - DEFIANT



SHIRT #1400 - K2  
SHORTS #1436 - K2



SHIRT #1400 - KOROVIN  
SHORTS #1436 - KOROVIN



SHIRT #1400 - DONOHO  
SHORTS #1436 - DONOHO



SHIRT #1400 - BENITO  
SHORTS #1436 - BENITO



SHIRT #1903 - DE ANZA  
SHORTS #1436 - DEA NZA



SHIRT #1903 - TORO  
SHORTS #1436 - TORO



SHIRT #1903 - SONORA  
SHORTS #1436 - SONORA



SHIRT #1903 - ARROW  
SHORTS #1436 - ARROW



SHIRT #1400 - OKMOK  
SHORTS #1436 - OKMOK

## THE SCRUM PRO RUGBY UNIFORMS



SHIRT #1400 - SENTINEL  
SHORTS #1436 - SENTINEL



SHIRT #1400 - CRONIN  
SHORTS #1436 - CRONIN



SHIRT #1400 - BONA  
SHORTS #1436 - BONA



SHIRT #1400 - SABINIO  
SHORTS #1436 - SABINIO



SHIRT #1903 - HIGHLANDER  
SHORTS #1436 - HIGHLANDER



SHIRT #1400 - HUXLEY  
SHORTS #1436 - HUXLEY

## THE WHEELING TOUCH RUGBY UNIFORMS



SHIRT #1219 - JALYA  
SKIRTS #1055 - JALYA



SHIRT #1219 - BONA  
SKIRTS #1055 - BONA



SHIRT #1219 - MERU  
SKIRTS #1055 - MERU



SHIRT #578 - NEVIS  
SHORTS #578 - NEVIS



SHIRT #1053 - BIA  
SHORTS #1055 - BIA



SHIRT #1053 - RIMO II  
SHORTS #1055 - RIMO II



SHIRT #1053 - KULA  
SHORTS #1055 - KULA



SHIRT #1053B - NEBO  
SHORTS #1055 - NEBO



SHIRT #1053B - LOA  
SHORTS #777 - LOA



SHIRT #1902 - RIMO I  
SHORTS #777 - RIMO I



SHIRT #1902 - BORU  
SHORTS #777 - BORU



SHIRT #1902 - BANFF  
SHORTS #777 - BANFF





## ***JERSEY #881 - SLATEX SHORTS #906B - CLASSIC***

Sprint away from the competition in JOG's fully sublimated sprinter pro singlets. Made using Heat Removal Technology (HRT), each singlet is designed to keep you cool, dry and comfortable when running on the track or through the hills.

### **JERSEY & SHORTS DESCRIPTION**

- Fully sublimated
- Light-weight feel and superior performance
- Excellent wicking capabilities
- Athletic fit mesh
- Optional mesh panels for added breathability
- Unlined or lined available
- Spandex shorts (optional)
- Full elastic waistband with draw cord (50% nylon, 20% polyester & 30% spandex)
- Optional mesh side panels to enhance breathability
- Men, Women and Youth cuts available
- Eco-friendly options available

### **FABRIC CONTENT**



#### **Jersey & Shorts**

- VaporICE Super Plus (Replay Series)

#### **Shorts**

- VaporICE Plus (Replay Series)
- VaporICE Everest
- Power Flex Mogul



Style #882 - SONNY



Style #881 - FUEL



Style #881 - BREEZER



Style #906 - CLASSIC



Style #777 - SPANDEX



Style #906 - SWIFT



SHIRT #881B - CLASSIC  
SHORTS #906 - CLASSIC



SHIRT #881B - BOLTER  
SHORTS #906 - BOLTER



SHIRT #881 - XTRA  
SHORTS #906 - XTRA



SHIRT #881 - SLATEX  
SHORTS #906 - SLATEX



SHIRT #881 - BREEZER  
SHORTS #906 - BREEZER



SHIRT #881 - SANTRO  
SHORTS #906 - SANTRO



SHIRT #881 - FUEL  
SHORTS #906 - FUEL



SHIRT #881 - SMOKER  
SHORTS #906 - SMOKER



SHIRT #881B - HURRAH  
SHORTS #906 - HURRAH



SHIRT #881 - SONNY  
SHORTS #906 - SONNY



SHIRT #881 - RISER  
SHORTS #906 - RISER



SHIRT #881 - ZIPPING  
SHORTS #906 - ZIPPING



SHIRT #881 - MATRIX  
SHORTS #906 - MATRIX



SHIRT #881 - SWIFTER  
SHORTS #906 - SWIFTER



SHIRT #881 - ROGUE  
SHORTS #906 - ROGUE



SHIRT #881 - INSPEED  
SHORTS #906 - INSPEED



SHIRT #881 - LOLA  
SHORTS #906 - LOLA



SHIRT #881 - ZOHEY  
SHORTS #906 - ZOHEY





## ***JERSEY #1960 - FLANKER***

JOG's lightweight football jerseys are designed with 4-way stretch woven fabric that's moisture wicking and breathable for optimum comfort on the field. Each fully custom jersey is built for flexibility, durability and high performance.



Style #1960 - FLANKER



Style #2343 - ROVER



Style #1960 - GUNNER

### FEATURES

- Fully sublimated jerseys
- Mesh inserts on back or side panels (optional)
- Men, women and youth cuts available
- Upgrade to Pro Tackle Twill embroidery of logos and lettering (optional)

### FABRIC CONTENT



#### Replica wear

- Poly Stretch Replay (Replay Series)

#### Game wear

- Pro Y Stretch

### AMERICAN FOOTBALL PATTERNS



Style #1960 - CLASSIC



Style #1960 - GUNNER



Style #2343 - ROVER



Style #2344 - SOONER



Style - WILDCAT



Style - DROVERS



Style - COMMODORES



Style - COUGAR





STYLE #1035 - CLASSIC



STYLE #2026 - STREAKER



STYLE #201 - CLASSIC

## FEATURES

- Light-weight feel and superior performance
- Advance wicking capabilities
- Elastic tape on the collar to add comfort and durability
- Custom screen printing or sublimation available
- Men, women and youth cuts available
- Rib cuffs (optional for long sleeve t-shirts)

## FABRIC CONTENT

-  • VaporICE T-Force Stretch (Replay Series)
-  • VaporICE Plus / VaporICE Super Plus (Replay Series)
-  • Power Flex Elite
-  • VaporICE Drip (Grinde Series)

## LETTERING STYLE (OPTIONS)



#01



#02



#03



#04



#05



#06



#07



#08



#09



#10





#201 - TOP SHELF



#201 - HOWITZER



#201 - CHALLENGER



#1514 - AVENGER



#201 - RAMPAGE



#201 - ICE SNIPER



#811 - THUNDER



#073 - RENEGADE DUAL



#073 - ESPRIT



#073 - DOMINATOR



#073 - DUAL SNIPER



#073 - TORNADO



#073 - THUNDERBIRD



#201 - ORCA



#716 - VERTICAL





#1035 - ENFORCER



#1035 - BLUE LINER



#1035 - FORECHECKER



#1035 - PLAYMAKER



#1035 - MUSTANG



#1035 - WOLVERINE



#201V - OUTLAW



#1035 - CRUISER



#1035 - ZENVO



#1035 - WAHOO



#1035 - SNIPER



#2026- STREAKER



#199 - RENEGADE DUAL



#199 - TORNADO



#1539 - SENNA







STYLE #301 - HORIZON

## FEATURES

- Light-weight feel and superior performance
- Superb wicking capabilities
- Elastic tape on the collar to add comfort and durability
- Custom embroidery or sublimation available
- Men, women and youth sizing available

## FABRIC CONTENT



• VaporICE T-Force Stretch (Replay Series)



• VaporICE Plus / VaporICE Super Plus (Replay Series)



• Power Flex Pique



• VaporICE Drip (Grinde Series)



STYLE #301LS - CLASSIC



STYLE #301 - CASPIAN



STYLE #301 - ULTRASONIC



STYLE #301 - NEMO



STYLE #301F - SURGE



#2206 - CLASSIC MODERN



#149 - CAVALIER



#167 - RIPTIDE



#217 - COYOTE



#388 - SURGE



#859 - COMBAT



#1081B - STREAM LINE FLOW



#1477 - TEMPO



#1788 - MOMENTUM



#301 - ULTRASONIC



#301 - MUSTANG



#301 - PIONEER







#301 - LUMINOUS



#301 - RAMBLER



#301 - PHOENIX



#301 - MAVERICK



#301 - BLAZERS



#301 - STEAMER



#301 - SPARTAN



#301 - HORIZON



#301 - COLLEGIATE



#301 - DEFENDER



#301 - GRIDIRON



#1257 - CLASSIC REVERSE EDGE





STYLE #1040 - DAYTONA

## FEATURES

- Light-weight feel and superior performance
- Superior wicking capabilities
- Full elastic waistband with draw cord (50% nylon, 20% polyester & 30% spandex)
- Inner lining and pockets (optional)
- Custom screen printing, sublimation or embroidery available

## FABRIC CONTENT



- VaporICE Everest
- VaporICE T-Force Stretch (Replay Series)
- VaporICE Plus / VaporICE Super Plus (Replay Series)
- VaporICE Vertical (Replay Series)
- VaporICE Drip (Grinde Series)



STYLE #1040B - CLASSIC



STYLE #1715 - PACER



STYLE #1645 - LINEAR



STYLE #602 - RACER



STYLE #1040 - PANTHER





#1040 - BENGAL



#1040 - CAMARO



#1040 - FAST LANE



#1040 - SQUIRE



#1040 - FIERO



#1040 - CLASSIC



#1040 - PANTHER



#1715 - PACER



#1040 - DAYTONA



#602 - RACER



#1845 - CHEVELLE



#1645 - LINEAR



## PERFORMANCE JACKETS

STYLE #1883 - PATRIOT



Sublimation or  
Embroidery Logo  
Available

Full Zip or 1/4 Zip



STYLE #722B - WARRIOR



STYLE #722B - STRATUS

### FEATURES

- A strong, mid-weight, warm and moisture wicking jacket
- Relaxed and comfortable fit
- Full zip or 1/4 zip options plus invisible side zip pockets
- Invisible side zip pockets

### FABRIC CONTENT



- Power Flex Yield Thermal Form (Replay Series)
- Power Flex Zorro Thermal Form (Grinde Series)

## SOFT SHELL JACKET

STYLE #2013 - STORM PULSE



Piping



Embroidery Logos

Full Zip or 1/4 Zip



STYLE #2013 - CLASSIC

### FEATURES

- 3-layer soft shell that can protect against cold wind & snow
- Durable water repellent
- Embroidery logo
- Optional invisible zip chest pocket
- Full zip plus invisible side zip pockets
- All 3 levels provide ability to keep warmth and moisture permeable
- The soft shell has a 4-way stretch that makes it comfortable during athletic activity

### FABRIC CONTENT

- Everest Storm Soft Shell



## PERFORMANCE JACKETS



#1833 - PATRIOT



#722B - CLASSIC



#722B - COLONIAL



#722B - DUAL WARRIOR



#722B - WARRIOR



#722 - STRATUS



HARVEST



RAKER



RUSTLER



## SOFT SHELL JACKETS



#2013 - CLASSIC



#2013 - STORM PULSE



#2087 - STORM PULSE  
(w/ chest pocket)



## EVEREST SURGE



STYLE #2098 - CLASSIC

### FEATURES

- Eco Thermal insulation - 65% recycled polyester (Replay Series)  
35% recycled polyester (Grinde Series)
- A polished, smooth finish that is lightweight yet durable
- A eco-friendly jacket that shields away the cold air and repels water
- Full zip and invisible zip hand pockets
- Embroidery team logo
- Optional embroidery player number

### FABRIC CONTENT

- Everest Surge

## EVEREST SURGE STRETCH



STYLE #2060 - CLASSIC STRETCH

### FEATURES

- Eco Thermal insulation - 65% recycled polyester (Replay Series)  
35% recycled polyester (Grinde Series)
- A eco-friendly jacket that shields away the cold air and repels water
- A polished, smooth finish that is lightweight, yet durable
- Full zip and invisible zip hand pockets
- Embroidery team logo
- Optional embroidery player number

### FABRIC CONTENT

**GRINDE**  
SERIES

- Everest Surge
- Power Flex Zorro Thermal Form (Grinde Series)  
(Sublimated area)




## EVEREST SURGE STRETCH




#2060 - CLASSIC STRETCH  



KWAWZA  




TOBO  



EVERGREEN  



NOREASTER  



DUVET  

## EVEREST SURGE



#2098 - CLASSIC 



Embroidery Logos

## STEALTH JACKET #836 / PANTS #727

### JACKET & PANTS FEATURES

- Water repellent and 4-way stretch
- Full zip and invisible side zip pockets
- Fleece neck liner (optional)
- Cell phone pocket (optional)
- Adjustable velcro cuffs (optional)
- Nylon and mesh inner lining
- Elastic and draw cord waist
- Bottom side zippers - draw cord or adjustable velcro option or adjustable velcro on leg opening
- Nylon inner lined cuff and bottom pants hem

### FABRIC CONTENT



- VaporICE Everest
- Everest Power Flex Peak

### BACK SIDE



JACKET #727 - CONTOUR  
PANTS #727 - CONTOUR



JACKET #2152 - KNIGHT  
PANTS #1601 - CLASSIC



JACKET #836 - AZTEC  
PANTS #727 - AZTEC



JACKET #1020 - DYNAMO  
PANTS #1601 - CLASSIC



JACKET #502 - GLACIER  
PANTS #502 - GLACIER





JACKET #836 - STEALTH TWO TONE  
PANTS #727 - CONTOUR



BACK SIDE



JACKET #2121 - NAVIGATOR  
PANTS #727 - NAVIGATOR



BACK SIDE



JACKET #2152 - KNIGHT  
PANTS #1601 - CLASSIC



BACK SIDE



JACKET #2231 - CLASSIC  
PANTS #837 - STEALTH



BACK SIDE



JACKET #1999 - ROADRUNNER  
PANTS #837 - STEALTH



BACK SIDE



JACKET #2082 - MONARCH  
PANTS #727 - CONTOUR



BACK SIDE



JACKET #727 - CONTOUR  
PANTS #727 - CONTOUR



BACK SIDE



JACKET #502 - GLACIER  
PANTS #502 - GLACIER



BACK SIDE



JACKET #836 - AZTEC  
PANTS #727 - AZTEC



BACK SIDE



STYLE #600 - ALPHA



STYLE #600C - ST. LOUIS

## HOODIE FEATURES

- Thermal form shields the cold & wind with minimal weight & bulk
- Soft knit construction, comfortable stretch & smooth feel
- Hockey or regular laces available
- Elastic knit rib or rib cuff and hem
- Sublimation, screen and embroidery application options
- Kangaroo pocket option
- Full zip and invisible side zip pocket options

## JOGGER FEATURES

- Thermal form shields the cold & wind with minimal weight & bulk
- Soft knit construction, comfortable stretch & smooth feel
- Full elastic waistband with draw cord  
(50% nylon, 20% polyester & 30% spandex)
- Invisible side zip pockets
- Elastic knit rib or rib bottom cuff

## FABRIC CONTENT

-  Thermal Form Replay (Replay Series)
-  Power Flex Zorro Thermal Form (Grinde Series)



STYLE #1809 - AKITA



STYLE #1809 - VICTORY



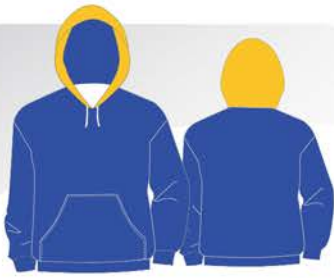
STYLE #1809 - ZEBRA

HOODIE #600 - CLASSIC DUAL

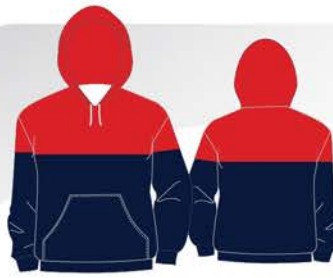


JOGGERS #1809 - GREYHOUND

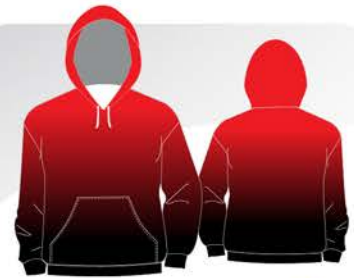




#600 - CLASSIC REVERSE



#600 - ALPHA



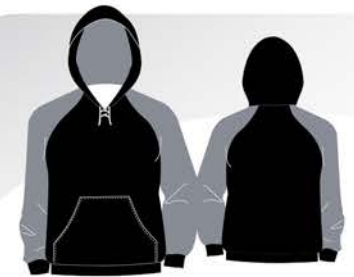
#600 - STAR GAZER



#600C - CLASSIC



#600B - CLASSIC FULL ZIP



#1543 - CLASSIC DUAL



#1543 - BUTLER



#600 - OTTER



#600 - SPYKER



#600 - ROYALS



#600 - WOLVES



#600C - PREDATORS



#600C - FLAMES



#600C - KNOXVILLE



#600C - NORTHERN





#600C - VEGAS



#600C - SABLE



#600C - ST. LOUIS



#600C - TRI BAND



#600C - HAMILTON



#600C - SUNY



#600 - YULE



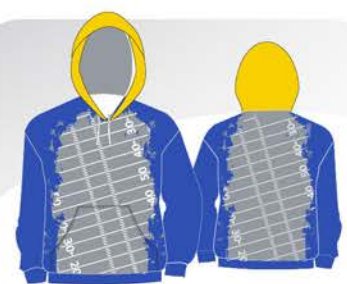
#600 - TUNDRA



#600 - WADI DOGS



#600 - EDGE



#600C - BLITZ



#600C - LIBERTY



#600C - STARS



#1543 - FINISH LINE



#1543 - NUTRIA







#1673 - ZEBRA



#1809 - VIZSLA



#1809 - AKITA



#1809 - CLASSIC



#1809 - SALUKI



#1809 - TERRIER



#1809 - BORZOI



#1809 - GREYHOUND



#1809 - LINCOLN



#1809 - VICTORY



#1757 - DREVER



#1757 - CORSO





## BEANIES

### DESCRIPTION

- Custom Beanies - 100% Acrylic  
(with embroidery logo + jacquard embroidery)  
(MOQ - 20 units)



## POM POM

### DESCRIPTION

- Custom POM POM - 100% Acrylic  
(with embroidery logo + jacquard embroidery)  
(MOQ - 100 units)

## SHADOW X PERFORMANCE HAT

### DESCRIPTION

- Custom Team Hats - 100% Polyester
- Snap back
- Available in a variety of colors  
(MOQ - 20 units)

# TERMS & CONDITIONS

## SHIPPING

JOG ships globally using DHL or UPS.  
The transit time for delivery is 2-3 days for most countries.

## CREDIT TERMS

Net 30 for existing (credit approved) customers. Orders will not be processed for any accounts of 60 days past due. A 50% down payment is required on orders from customers who have not been given NET 30 terms and the balance is due on delivery.

## DESIGN APPROVALS

Digital mockups and order forms are provided for approval before production for every order. Please ensure all details are thoroughly correct before approving mockups / orders. Please submit high resolution vector art in either .ai or .eps formats. If you are unable to supply your artwork in vector format our designers will recreate and charges will be applied.

## DAMAGES, RETURNS AND CREDITS

Items that were shipped either incorrectly, damaged, or defective are subject to returns. Each case will be reviewed by your sales representative.

## LAUNDERING

Hand wash or machine wash at "gentle" setting with like colors. Use cold water, mild soap, and rinse thoroughly. Air dry or tumble dry low. Do not dry clean. Do not iron over printed garments. Do not bleach.

## RIGHT TO MARKET & PROMOTE

JOG reserves the right to use all products for marketing purposes unless otherwise specified by the customer.

## LICENSING

JOG ensures all decorated logos will have requisite licensing / royalty approval prior to producing an order.



# ***CUSTOM STYLE PERFORMANCE***



JOIN OUR GAME

## ***NORTH AMERICA***

JOG ATHLETICS LLC  
501 SILVERSIDE RD.  
WILMINGTON, DE 19809  
PHONE: (302)538-9444

## ***ASIA***

JOG SPORTS CO., LTD.  
99 SOI PAYASURENT 35  
BANGKOK, THAILAND 10510



[WWW.JOGSPORTSWEAR.COM](http://WWW.JOGSPORTSWEAR.COM)



[INFO@JOGSPORTS.COM](mailto:INFO@JOGSPORTS.COM)