



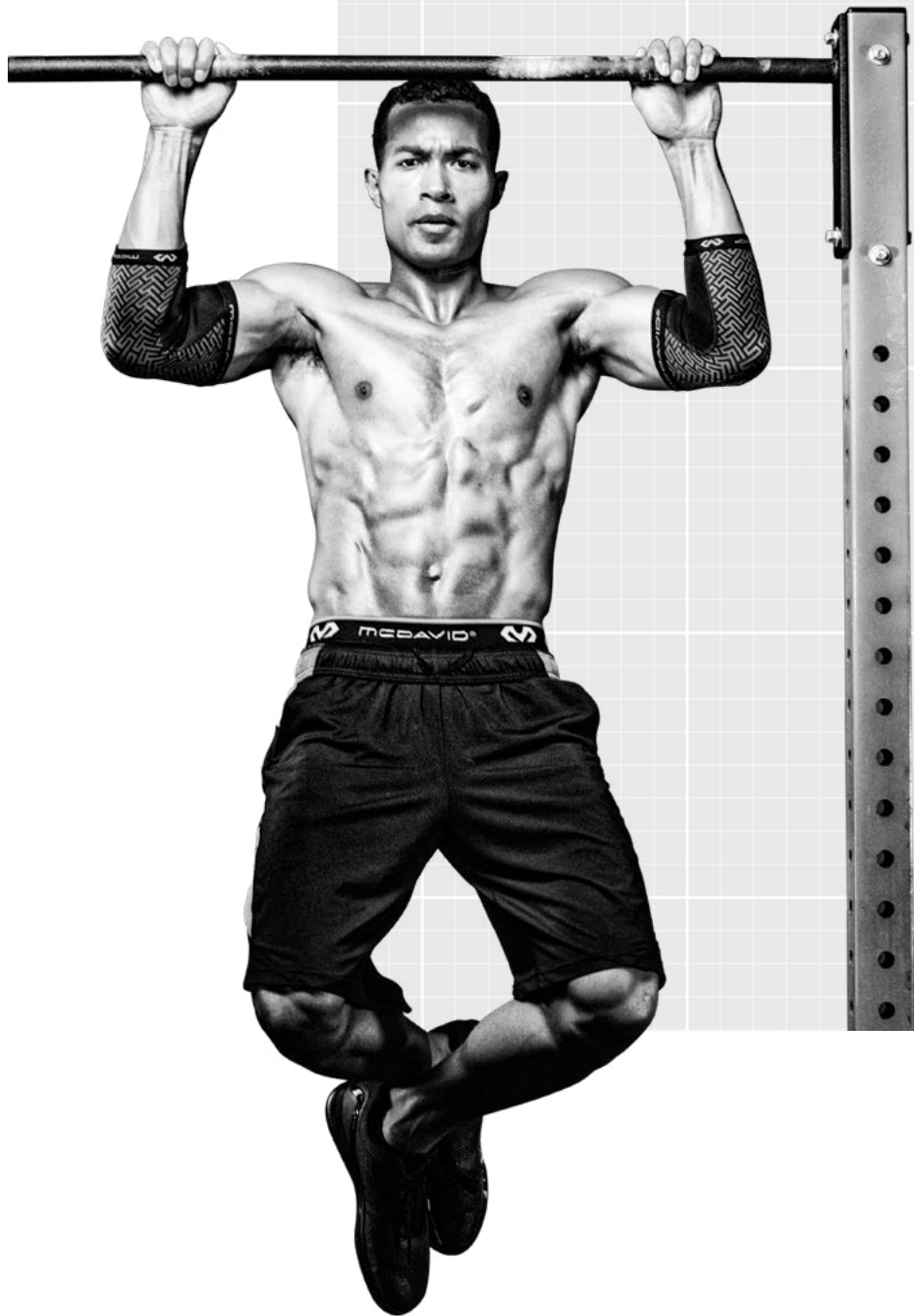
McDAVID®

# 2021 CATALOG



# LET'S GO

We see you. Now that you've made it, time to keep going. There is still a next level, so let's get to work. Let's get there with the best performance in the game, trusted by the best athletes and trainers in the world. We've been ready for what's next — and you will be, too.



## Contents

- 01** PROTECTION
- 06** PERFORMANCE APPAREL
- 12** CUPS & SUPPORTS
- 15** SPORTSMED
- 32** HOW TO MEASURE
- 36** INDEX

# THE NEXT LEVEL

Finding the next level starts with the right foundation. **MCDAVID** has been helping athletes build from the ground up for decades. This is the protective gear — world-renowned HEX, advanced compression technologies, sick looks and legendary core support — that gives you confidence. Next stop: Next level. **THERE'S YOUR EDGE.**

PROTECTION





## MD6448 ELITE HEX<sup>®</sup> Leg Sleeves / pair

Comfort and support with Breathable Knit Compression

**COLORS** » Black, White

**Sizes:** S-XL

**MSRP:** \$49.99 USD



Performance Carton



## MD6446 HEX<sup>®</sup> Leg Sleeves / pair

Millions of units sold. The global standard in protection.

**COLORS** » Black, White, Scarlet, Royal, Bright Pink

**Sizes:** Adult S-2XL, (2XL in Black only); Youth (Black only)

**MSRP:** Adult: \$39.99 USD; Youth: \$34.99 USD



Clamshell Packaging



## MD6440 HEX<sup>®</sup> Knee / Elbow / Shin / Pads / pair

Confidence in motion, wherever you wear it

**COLORS** » Black, White

**Sizes:** Adult: XS-2XL, (XS and 2XL in Black only); Youth (Black only)

**MSRP:** Adult: \$34.99 USD; Youth: \$29.99 USD



Clamshell Packaging



## MD645 Knee / Elbow Pads / pair

Padded protection at a strong value

**COLORS** » Black; White

**Sizes:** XS-XL, (XS in Black only)

**MSRP:** \$12.99 USD



Clamshell Packaging





## MD6501 ELITE HEX<sup>®</sup> Shooter Arm Sleeve / single

Breathable Knit Compression and HEX on every shot

**COLORS** » Black, White

**Sizes:** S-L

**MSRP:** \$29.99 USD

Performance Carton



## MD6500 HEX<sup>®</sup> Shooter Arm Sleeve / single

Ball harder with an essential layer of confidence

**COLORS** » Black, White, Scarlet, Royal, Navy

**Sizes:** Adult S-L; Youth (Black only)

**MSRP:** Adult: \$24.99 USD; Youth: \$19.99 USD

Clamshell Packaging



## MD651 HEX<sup>®</sup> Forearm Sleeves / pair

Block out and absorb the impact

**COLORS** » Black

**Sizes:** XS-2XL

**MSRP:** \$29.99 USD

Clamshell Packaging



## MD6511 ELITE Compression Arm Sleeve / single

Flex on 'em with non-padded Breathable Knit Compression

**COLORS** » Black, White

**Sizes:** S-L

**MSRP:** \$22.99 USD

Performance Carton





## MD656 Compression Arm Sleeve / single

Must-have for any athlete making moves

**COLORS** » Black, White, Scarlet, Royal, Bright Pink

**Sizes:** XS-L

**MSRP:** \$14.99 USD

 Performance Carton



## MD6566 Compression Arm Sleeves / pair

Strong compression at a stronger value

**COLORS** » Black, White, Scarlet, Royal, Bright Pink

**Sizes:** XS-L

**MSRP:** \$24.99 USD

 Performance Carton



## MD6577 Compression Calf Sleeves / pair

Perform and recover with McDavid compression

**COLORS** » Black, White, Royal, Bright Pink

**Sizes:** S-L

**MSRP:** \$24.99 USD

 Performance Carton





## MD8841 ELITE Compression Socks / pair

**BEST FOR** Improved circulation and support during activity and enhanced recovery post activity

**COLORS** Black, Black/Alt Blue

**Sizes:** XS-XL

**MSRP:** \$49.99 USD



Performance Carton



## MD8846 ELITE Compression Calf Sleeves / pair

**BEST FOR** Improved circulation and support during activity and enhanced recovery post activity

**COLORS** Black, Black/Alt Blue

**Sizes:** XS-2XL

**MSRP:** \$39.99 USD



Performance Carton



## MD8831 Rebound Compression Socks / pair

**BEST FOR** Wear post-run/workout/game for enhanced recovery. Designed for extended wear

**COLORS** Black; Black/Alt Blue

**Sizes:** XS-2XL

**MSRP:** \$39.99 USD



Performance Carton



## MD8836 mmHg Calf Sleeves / pair

**BEST FOR** Wear during run/workout/game for improved circulation/performance

**COLORS** Black

**Sizes:** XS-2XL

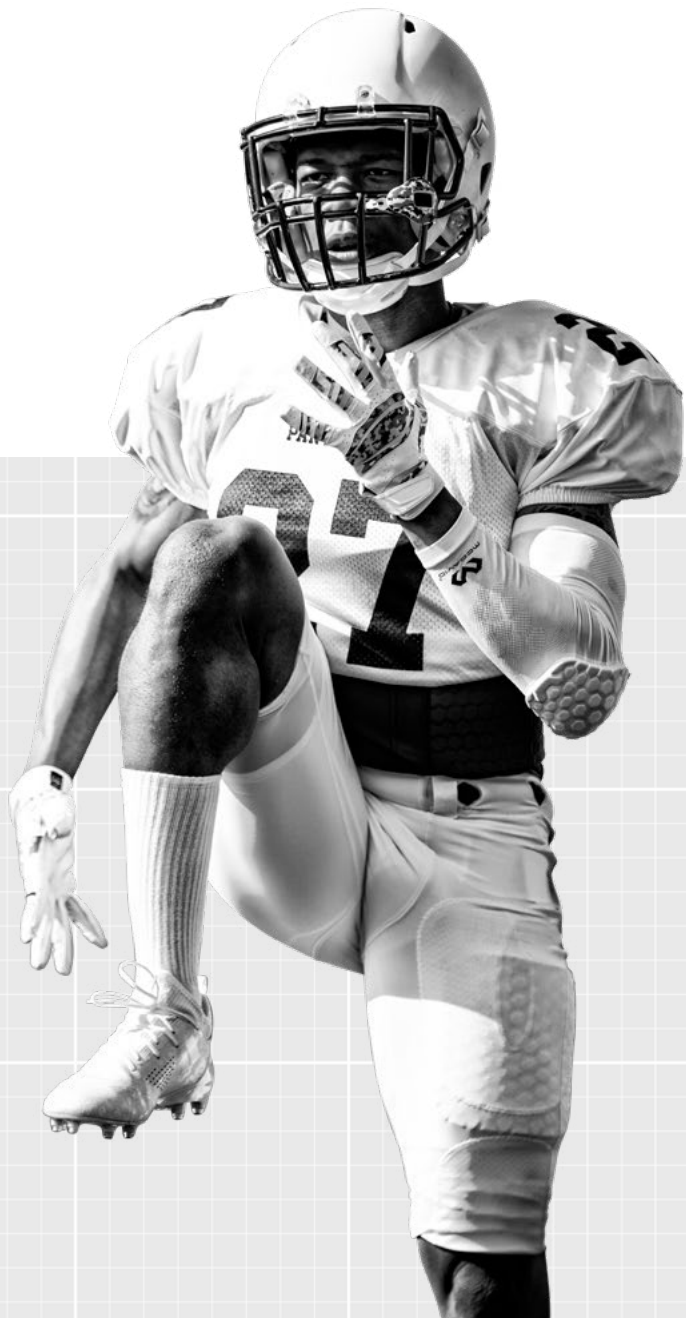
**MSRP:** \$29.99 USD



Performance Carton



PERFORMANCE  
APPAREL



# RISE AND SHINE

Every day presents every opportunity to **PUSH YOURSELF**. Peak performance is not possible without the right performance solutions. Meticulous preparation and intensive recovery come from the right compression fit and technology. Opportunity is here. **RISE UP**.





## MD7610 HEX® Sternum Shirt

Vital HEX protection in a sleeveless top

**COLORS** >> Black, White/Gray

**Sizes:** Adult: S-XL; Youth: XS-XL

**Warning:** This product is designed to minimize injury from minor impacts to the sternum and chest area. It is not guaranteed to reduce the risk of Commotio Cordis, a rare but sometimes-fatal injury arising from sudden impact to the heart.

**MSRP:** Adult: \$49.99 USD; Youth: \$39.99 USD

HangTag Packaging



## MD7932 HEX® Sleeveless Shirt / 5-Pad

Unbeatable HEX protection with easy, flexible comfort

**COLORS** >> Black

**Sizes:** Adult: S-2XL; Youth: S-XL

**MSRP:** Adult/Youth: \$64.99 USD

HangTag Packaging



**NEW**



## MD7964 ELITE HEX® Tank Shirt / 3-Pad

High-performance, breathable with strategic HEX padding

**COLORS** >> Black

**Sizes:** XS/S, M/L, XL/2XL

**MSRP:** \$69.99 USD

HangTag Packaging



**NEW**



## MD20220 HEX® 2.0 Tank

Stay confident with HEX protection on ribs and spine

**COLORS** >> Black

**Sizes:** S-XL

**MSRP:** \$44.99 USD

HangTag Packaging





NEW



## MD749 ELITE HEX<sup>®</sup> 2-Pad ¾ Tight

HEX knee protection and Breathable Knit Compression

COLORS » Black

Sizes: XS/S, M/L, XL/2XL

MSRP: \$54.99 USD

 HangTag Packaging



NEW



## MD20820 HEX<sup>®</sup> 2-pad ¾ Tight

Advanced lower-body protection and support

COLORS » Black, White

Sizes: S-2XL

MSRP: \$49.99 USD

 HangTag Packaging



NEW



## MD750 ELITE<sup>®</sup> Compression ¾ Tight

Cool, calm and collected with Breathable Knit Compression

COLORS » Black

Sizes: XS/S, M/L, XL/2XL

MSRP: \$44.99 USD

 HangTag Packaging



NEW



## MD10020 Performance Compression ¾ Tight

Targeted compression over knee, extra joint support and abrasion protection

COLORS » Black, White

Sizes: S-2XL

MSRP: \$39.99 USD

 HangTag Packaging





## MD8201 SUPER CROSS Compression™ Short w/ hip spica

Ultra-premium Z-wick mesh warms and stabilizes muscles

COLORS » Black

Sizes: S-3XL

MSRP: \$59.99 USD

HangTag Packaging



## MD8200 CROSS Compression™ Short w/ hip spica

Mimics athletic taping for enhanced recovery and support

COLORS » Black/Black/Gray

Sizes: S-3XL

MSRP: \$49.99 USD

Performance Carton



NEW



## MD10180 Compression Short

Keep core and lower body muscles active and keep moving strong

COLORS » Black, White

Sizes: S-2XL

MSRP: \$24.99 USD

Performance Carton



NEW



## MD20180 HEX® 2-Pad Short

HEX protection always moves with you

COLORS » Black, White

Sizes: S-2XL

MSRP: Adult: \$49.99 USD

HangTag Packaging



McDAVID®



## MD7991 HEX® Short w/ contoured wrap-around thigh

Wrap yourself with superior confidence in motion

**COLORS** >> Black, White

**Sizes:** Adult S-3XL

**MSRP:** \$79.99 USD

HangTag Packaging



## MD737DD HEX® Dual -Density Thudd Short™

Thick HEX protection for extra-strong impacts

**COLORS** >> Black, White

**Sizes:** S-3XL

**MSRP:** \$69.99 USD

HangTag Packaging



## MD737 HEX® Thudd Short™

Trusted by top ballers at every level

**COLORS** >> Black, White

**Sizes:** S-3XL

**MSRP:** \$64.99 USD

HangTag Packaging



## MD7333 HEX® Integrated Girdle / 5-Pad

HEX protection with hard-shell thigh guards

**COLORS** >> Gray

**Sizes:** S-3XL

**MSRP:** \$64.99 USD

HangTag Packaging





## MD733 HEX<sup>®</sup> Girdle / 2-Pocket

HEX hip pads with pockets for more protection

COLORS » Gray

Sizes: S-3XL

MSRP: \$49.99 USD

 HangTag Packaging



## MD7935 Rival<sup>™</sup> 5-Pad Shirt

Five points of protection for more confidence

COLORS » Black/Bright Yellow

Sizes: Adult: S-2XL; Youth: M-L

MSRP: \$34.99 USD

 HangTag Packaging



## MD7414 Rival<sup>™</sup> Integrated Girdle w/ hard-shell thigh guards

Go harder in padded football protection

COLORS » Black/Bright Yellow, Gray/Bright Yellow

Sizes: Adult: S-3XL (3XL available in Gray only); Youth: M-L

MSRP: \$34.99 USD

 HangTag Packaging



## MD7418 Rival<sup>™</sup> 7-Pad 3/4 Tight w/ hard shell thigh guards

Essential lower-body football coverage

COLORS » Black/Bright Yellow, Gray/Bright Yellow

Sizes: Adult: S-2XL; Youth: M-L

MSRP: Adult: \$44.99 USD

 HangTag Packaging



CUPS & SUPPORTS



STRENGTH  
FROM  
WITHIN

Trusted, quality, core protection. That's **MCDAVID.**  
Rest easy knowing you've got FlexCup technology  
protecting what matters.





## MD3020 FlexCup™

**Sizes:** Adult, Teen, Youth, Peewee

**MSRP:** \$9.99 USD



Clamshell Packaging



## MD9255CF Performance Boxer w / FlexCup™

**COLORS** >> Black

**Sizes:** Adult: S-3XL (w/ cup S-XL only); Teen (w/ cup); Regular, Large; Youth: Regular, large

**MSRP:** Adult/Teen: \$29.99 USD; Youth: \$28.99 USD



Clamshell Packaging



## MD9140 Boxer Brief w/ FlexCup™

**COLORS** >> White

**Sizes:** Youth: Regular, Large; Peewee: Regular, Large

**MSRP:** \$16.99 USD



Clamshell Packaging



## MD9110 Brief w/ FlexCup™

**COLORS** >> White

**Sizes:** Youth: Regular, Large; Peewee: Regular, Large

**MSRP:** \$16.99 USD



Clamshell Packaging



## MD9130 Brief w/ soft cup

COLORS >> White

Sizes: Youth: Regular, Large; Peewee: Regular, Large

MSRP: \$15.99 USD

Clamshell Packaging



## MD325 Athletic Supporter w/ FlexCup™

COLORS >> White

Sizes: Adult: S-XL; Teen: Regular, Large

MSRP: \$17.99 USD

Clamshell Packaging



## MD3110 Athletic Supporter / 2-Pack

COLORS >> White, Black

Sizes: S-2XL

MSRP: \$19.99 USD

Clamshell Packaging



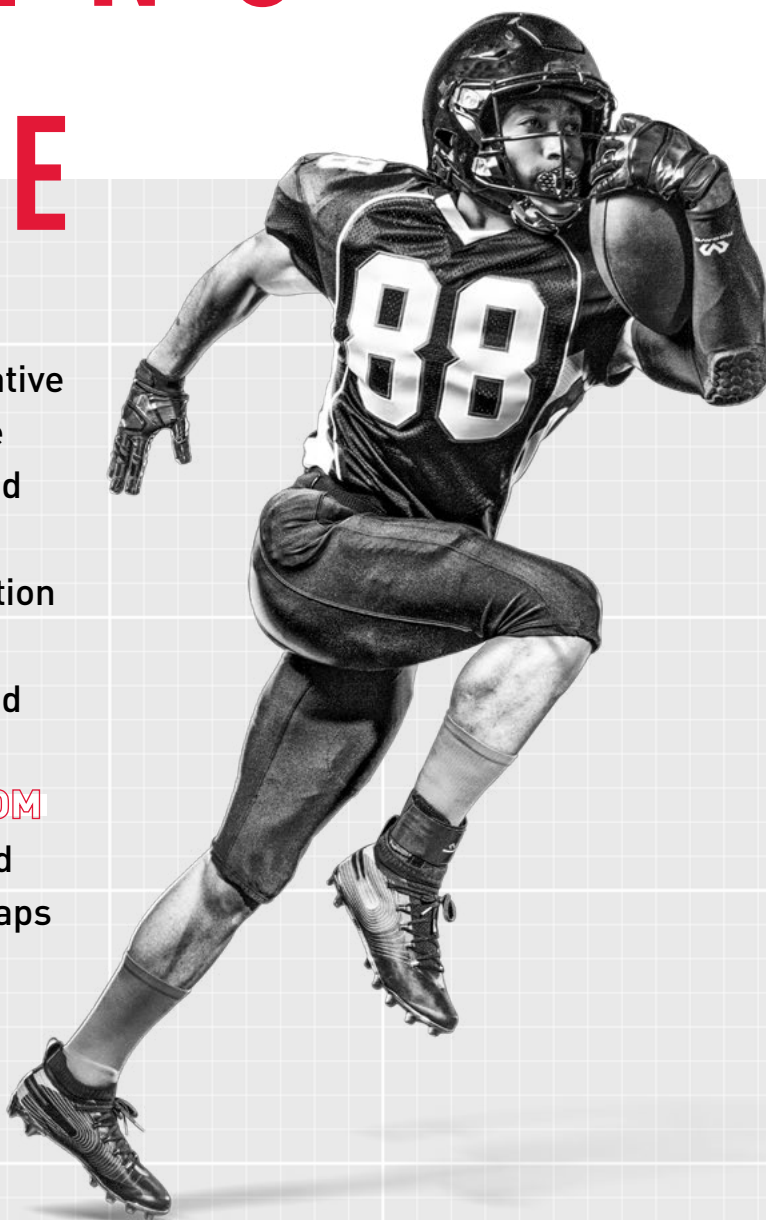


# THE DRIVING FORCE



SPORTMED

Today's **MCDAVID** — the innovative spirit, the relentless hustle, the smartest tech — remains rooted in **SPORTMED®**. Our rep keeps growing with trusted collaboration and rigorous testing alongside the world's premier athletes and trainers. And the latest R&D results are next level. **PHANTOM** and **STEALTH** ankle braces and **HYPERBLEND** sleeves and wraps are keeping athletes, and our momentum, moving forward.





**3** LEVEL 3:  
MAXIMUM PROTECTION

## MD4305 Phantom Ankle Brace w/ stirrup stays & figure-8 straps

**BEST FOR** Injury prevention and pain relief from major ankle instabilities and conditions

**COLORS** Black

**Sizes:** XS/S, M/L, XL/2XL

**MSRP:** \$49.99 USD

Team Poly-bag Packaging

Patent Pending



**3** LEVEL 3:  
MAXIMUM PROTECTION

## MD4303 Phantom Ankle Brace w/ advanced strapping & flex-support stirrup stays

**BEST FOR** Injury prevention and pain relief from moderate to major ankle instabilities and conditions

**COLORS** Black

**Sizes:** XS/S, M/L, XL/2XL

**MSRP:** \$44.99 USD

Performance Carton

Patent Pending



**3** LEVEL 3:  
MAXIMUM PROTECTION

## MD5146 ELITE Engineered Elastic™ Ankle Support w/ figure-6 strap & stays

**BEST FOR** Supporting the ankle with advanced Figure-6 configuration, flexible stays and compression technology

**COLORS** Black

**Sizes:** XS-2XL

**MSRP:** \$54.99 USD

Performance Carton



**3** LEVEL 3:  
MAXIMUM PROTECTION

## MD195® Ankle Brace w/ straps

**BEST FOR** Helping to prevent and/or recover from common ankle sprains

**COLORS** Black

**Sizes:** XS-XL

**MSRP:** \$39.99 USD

Clamshell Packaging





**3** LEVEL 3:  
MAXIMUM PROTECTION

## MD199 Ankle Brace w/ lace-up / stays

**BEST FOR** Helping to prevent and/or recover from common ankle sprains

**COLORS** Black

**Sizes:** 2XS-XL (2XS not available in retail packaging)

MSRP: \$34.99

Clamshell Packaging



**2** LEVEL 2:  
ADVANCED PROTECTION

## MD4311 Stealth Cleat Ankle Brace w/ minimal coverage & flex-support stays

**BEST FOR** Ankle support, injury prevention and pain relief within tight fitting cleats and shoes

**COLORS** Black

**Sizes:** XS-2XL

MSRP: \$39.99 USD

Performance Carton  
Patent Pending



**2** LEVEL 2:  
ADVANCED PROTECTION

## MD5132 ELITE Engineered Elastic™ Ankle Sleeve

**BEST FOR** Minor to moderate support and relief from pain and sprains associated with ligament instabilities

**COLORS** Black, Ultra Silver

**Sizes:** S-XL

MSRP: \$39.99 USD

Performance Carton



**2** LEVEL 2:  
ADVANCED PROTECTION

## MD432 Ankle Support w/ figure-8 straps

**BEST FOR** Minor to moderate ankle support plus relief from pain associated with arthritis and tendonitis

**COLORS** Black

**Sizes:** S-XL

MSRP: \$24.99

Clamshell Packaging





**1** LEVEL 1:  
PRIMARY PROTECTION

## MD5221 HyperBlend™ Ankle Sleeve

**BEST FOR** >> Helping to prevent and/or recover from common ankle sprains and strains

**COLORS** >> Black

**Sizes:** S-XL

**MSRP:** \$29.99 USD

Clamshell Packaging



**1** LEVEL 1:  
PRIMARY PROTECTION

## MD5135 FREELASTICS Plantar Fascia Sleeve

**BEST FOR** >> Relief from plantar fasciitis pain and inflammation

**COLORS** >> Black

**Sizes:** S-XL

**MSRP:** \$24.99

Clamshell Packaging



**1** LEVEL 1:  
PRIMARY PROTECTION

## MD5121 Ankle Sleeve / 4-way elastic

**BEST FOR** >> Support for relief from pain associated with tendonitis, arthritis and other non-specific conditions

**COLORS** >> Black

**Sizes:** S-XL

**MSRP:** \$19.99 USD

Clamshell Packaging



**1** LEVEL 1:  
PRIMARY PROTECTION

## MD6306 ACTIVE Comfort Compression Ankle Sleeve

**BEST FOR** >> Comfortable, all-day support for minor arthritis and tendonitis

**COLORS** >> Gray/Black

**Sizes:** S-XL

**MSRP:** \$17.99 USD

Clamshell Packaging





**1** LEVEL 1:  
PRIMARY PROTECTION

## MD511 Ankle Sleeve / elastic

**BEST FOR** >> Support and relief from pain associated with tendonitis, arthritis and minor injury

**COLORS** >> Black

**Sizes:** S-XL

**MSRP:** \$14.99 USD

Clamshell Packaging



**3+** LEVEL 3+:  
MAXIMUM PROTECTION+

## MD4200 ELITE Bio-Logix™ Knee Brace

**BEST FOR** >> High-level support; improving medial and lateral stability, helping reduce injury and assisting recovery

**COLORS** >> Black

**Sizes:** XS-2XL

**MSRP:** \$149.99 USD

Performance Carton



**3** LEVEL 3:  
MAXIMUM PROTECTION

## MD429X Knee Brace w/ polycentric hinges & cross straps

**BEST FOR** >> High-level support; improving medial and lateral stability, helping reduce injury and assisting recovery

**COLORS** >> Black

**Sizes:** S-2XL

**MSRP:** \$79.99 USD

Clamshell Packaging



**3** LEVEL 3:  
MAXIMUM PROTECTION

## MD429 Knee Brace w/ polycentric hinges

**BEST FOR** >> High-level support; improving medial and lateral stability, helping reduce injury and assisting recovery

**COLORS** >> Black

**Sizes:** S-2XL

**MSRP:** \$69.99 USD

Clamshell Packaging





**3** LEVEL 3:  
MAXIMUM PROTECTION

## MD422 Knee Brace w/ dual disk hinges

**BEST FOR** >> Moderate to high-level medial and lateral support for improving stability; aids in recovery

**COLORS** >> Black

**Sizes:** S-2XL

**MSRP:** \$59.99 USD

Clamshell Packaging



**2** LEVEL 2:  
ADVANCED PROTECTION

## MD5133 ELITE Engineered Elastic™ Knee Sleeve w/ gel buttress & stays

**BEST FOR** >> Minor to moderate support and relief from pain associated with ligament instabilities

**COLORS** >> Black, Ultra Silver

**Sizes:** S-XL

**MSRP:** \$54.99 USD

Performance Carton



**2** LEVEL 2:  
ADVANCED PROTECTION

## MD425 Knee Support w/ stays & cross straps

**BEST FOR** >> Moderate support helping to relieve symptoms and aid recovery from chondromalacia, patellar subluxation and tendonitis

**COLORS** >> Black

**Sizes:** S-2XL

**MSRP:** \$49.99 USD

Clamshell Packaging



**2** LEVEL 2:  
ADVANCED PROTECTION

## MD4201 VOW™ Knee Wrap w/ Stays

**BEST FOR** >> Versatile and targeted support for a variety of patella tracking issues and moderate support from pain associated with tendonitis

**COLORS** >> Black

**Sizes:** S-XL

**MSRP:** \$44.99 USD

Clamshell Packaging





**2** LEVEL 2:  
ADVANCED PROTECTION

## MD421 Knee Support w/ stays

**BEST FOR** Moderate support helping to relieve symptoms and aid recovery from chondromalacia, patellar subluxation and tendonitis

**COLORS** Black

**Sizes:** S-2XL

**MSRP:** \$39.99 USD

Clamshell Packaging



**2** LEVEL 2:  
ADVANCED PROTECTION

## MD5116 Knee Sleeve / 4-way elastic w/ gel buttress & stays

**BEST FOR** Moderate support and relief from pain associated with arthritis, bursitis and tendonitis

**COLORS** Black

**Sizes:** S-XL

**MSRP:** \$39.99 USD

Clamshell Packaging



**2** LEVEL 2:  
ADVANCED PROTECTION

## MD4192 Knee Support / double wrap

**BEST FOR** Versatile and targeted support for a variety of patella tracking issues

**COLORS** Black

**Sizes:** S-L

**MSRP:** \$34.99 USD

Clamshell Packaging



**2** LEVEL 2:  
ADVANCED PROTECTION

## MD5125 Knee Sleeve / 4-way elastic w/ gel buttress

**BEST FOR** Moderate support and relief from pain associated with arthritis, bursitis and tendonitis

**COLORS** Black

**Sizes:** S-XL

**MSRP:** \$29.99 USD

Clamshell Packaging



**2** LEVEL 2:  
ADVANCED PROTECTION

## MD419 Knee Support / adjustable wrap

**BEST FOR** >> Reducing symptoms of patellar tendonitis (runner's/jumper's knee), Osgood-Schlatter disease and patella tracking

**COLORS** >> Black

**Sizes:** S/M, L/XL

**MSRP:** \$24.99 USD

Clamshell Packaging



**2** LEVEL 2:  
ADVANCED PROTECTION

## MD414 Knee Strap / patella

**BEST FOR** >> Reducing symptoms of patellar tendonitis (runner's/jumper's knee), Osgood-Schlatter disease and patella tracking

**COLORS** >> Black

**Sizes:** Regular, Large

**MSRP:** \$17.99 USD

Clamshell Packaging



**1** LEVEL 1:  
PRIMARY PROTECTION

## MD410 Knee Support with Sorbothane® Pad

**BEST FOR** >> Stay active with moderate support that helps relieve knee pain

**COLORS** >> Black

**Sizes:** S-XL

**MSRP:** \$24.99 USD

Performance Carton



**1** LEVEL 1:  
PRIMARY PROTECTION

## MD5211 HyperBlend™ Knee Sleeve

**BEST FOR** >> Minor to moderate support for pain relief associated with ligament instabilities

**COLORS** >> Black

**Sizes:** S-XL

**MSRP:** \$24.99 USD

Clamshell Packaging





**LEVEL 1:**  
PRIMARY PROTECTION

## MD6305 ACTIVE COMFORT Compression Knee Sleeve

**BEST FOR** Pain relief and moderate support while fully active.

**COLORS** Gray/Black

**Sizes:** S-L

**MSRP:** \$19.99 USD

Performance Carton



**LEVEL 1:**  
PRIMARY PROTECTION

## MD5113 Knee Sleeve / 4-way elastic

**BEST FOR** Support for relief from pain associated with tendonitis, arthritis and other non-specific conditions

**COLORS** Black

**Sizes:** S-XL

**MSRP:** \$19.99 USD

Clamshell Packaging



**LEVEL 1:**  
PRIMARY PROTECTION

## MD402 Knee Sleeve / open patella

**BEST FOR** Minor support helping to relieve pain and promote healing of tendonitis, bursitis, arthritis and other nonspecific knee conditions

**COLORS** Black

**Sizes:** S-2XL

**MSRP:** \$19.99 USD

Clamshell Packaging



**LEVEL 1:**  
PRIMARY PROTECTION

## MD401 Knee Sleeve

**BEST FOR** Minor support helping to relieve pain and promote healing of tendonitis, bursitis, arthritis and other nonspecific knee conditions

**COLORS** Black

**Sizes:** S-2XL

**MSRP:** \$19.99 USD

Clamshell Packaging





**1** LEVEL 1:  
PRIMARY PROTECTION

## MD510 Knee Sleeve / elastic

**BEST FOR** >> Minor support and pain relief from arthritis, bursitis and tendonitis

**COLORS** >> Black

**Sizes:** S-XL

**MSRP:** \$14.99 USD

Clamshell Packaging



**1** LEVEL 1:  
PRIMARY PROTECTION

## MD478 Thigh Wrap / adjustable

**BEST FOR** >> Helping to reduce hamstring and quad strains/pulls; aids recovery

**COLORS** >> Black

**Sizes:** One Size

**MSRP:** \$24.99 USD

Clamshell Packaging



**1** LEVEL 1:  
PRIMARY PROTECTION

## MD475 Groin Wrap / adjustable

**BEST FOR** >> Helping to reduce upper thigh and hamstring strains/pulls; aids recovery

**COLORS** >> Black

**Sizes:** One Size

**MSRP:** \$19.99 USD

Clamshell Packaging



**1** LEVEL 1:  
PRIMARY PROTECTION

## MD514 Thigh Sleeve / elastic

**BEST FOR** >> Mild compression for soft-tissue support without heat retention

**COLORS** >> Black

**Sizes:** S-XL

**MSRP:** \$16.99 USD

Clamshell Packaging



**1** LEVEL 1:  
PRIMARY PROTECTION

## MD441 Calf Sleeve

**BEST FOR** >> Reducing pain associated with calf strains, shin splints and varicose veins; aids recovery

**COLORS** >> Black

**Sizes:** S-XL

MSRP: \$19.99 USD

 Performance Carton



**3** LEVEL 3:  
MAXIMUM PROTECTION

## MD493 Back Stabilizer

**BEST FOR** >> Core support and helping to relieve nonspecific back pain

**COLORS** >> Black

**Sizes:** Regular, Large

MSRP: \$49.99 USD

 Clamshell Packaging



**2** LEVEL 2:  
ADVANCED PROTECTION

## MD495 Back Support

**BEST FOR** >> Core support and helping to relieve nonspecific back pain

**COLORS** >> Black

**Sizes:** Regular, Large

MSRP: \$39.99 USD

 Clamshell Packaging



**2** LEVEL 2:  
ADVANCED PROTECTION

## MD499 Waist Trimmer w/ Core Support

**BEST FOR** >> Core support and as part of a comprehensive weight loss program

**COLORS** >> Black

**Sizes:** OSFM

MSRP: \$29.99 USD

 Clamshell Packaging





**1** LEVEL 1:  
PRIMARY PROTECTION



## MD491 Waist Trimmer

**BEST FOR** > Minor back/core support and potential weight-loss assistance

**COLORS** > Black

**Sizes:** One Size

MSRP: \$19.99 USD



Clamshell Packaging



**1** LEVEL 1:  
PRIMARY PROTECTION



## MD498 Women's Waist Trimmer

**BEST FOR** > Minor back/core support and potential weight-loss assistance

**COLORS** > Black

**Sizes:** One Size

MSRP: \$19.99 USD



Clamshell Packaging



**2** LEVEL 2:  
ADVANCED PROTECTION



## MD5126 Shoulder Wrap / 4-way elastic

**BEST FOR** > Support and compression of shoulder and A/C joints with regulated range of motion control

**COLORS** > Black

**Sizes:** S-L

MSRP: \$69.99 USD



Clamshell Packaging



**1** LEVEL 1:  
PRIMARY PROTECTION



## MD463 Shoulder Wrap

**BEST FOR** > Helping to relieve pain and promote healing for nonspecific shoulder injuries, arthritis and bursitis

**COLORS** > Black

**Sizes:** S-L

MSRP: \$39.99 USD



Clamshell Packaging





**2** LEVEL 2:  
ADVANCED PROTECTION

## MD5233 HyperBlend™ Elbow Sleeve w/ strap

**BEST FOR** >> Minor ligament and soft tissue support to help relieve painful arthritis, bursitis and tendonitis

**COLORS** >> Black

**Sizes:** S-XL

**MSRP:** \$29.99 USD

Performance Carton



**2** LEVEL 2:  
ADVANCED PROTECTION

## MD5130 Elbow Sleeve / 4-way elastic w/ gel buttresses

**BEST FOR** >> Breathable relief from arthritis, bursitis and tendonitis, especially golfer's elbow and tennis elbow

**COLORS** >> Black

**Sizes:** S-XL

**MSRP:** \$24.99 USD

Clamshell Packaging



**2** LEVEL 2:  
ADVANCED PROTECTION

## MD485 Elbow Support w/ strap

**BEST FOR** >> Soft-tissue support to help relieve painful tennis/golf elbow symptoms

**COLORS** >> Black

**Sizes:** S-XL

**MSRP:** \$19.99 USD

Clamshell Packaging



**2** LEVEL 2:  
ADVANCED PROTECTION

## MD489 Elbow Support w/ strap

**BEST FOR** >> Helping to relieve painful tennis/golf elbow symptoms through targeted pressure

**COLORS** >> Black

**Sizes:** S-L

**MSRP:** \$19.99 USD

Clamshell Packaging



**1** LEVEL 1:  
PRIMARY PROTECTION

## MD5136 Elbow Sleeve / 4-way elastic

**BEST FOR** > Support for relief from pain associated with tendonitis, arthritis, bursitis and other non-specific conditions

**COLORS** > Black

**Sizes:** S-XL

**MSRP:** \$19.99 USD

Clamshell Packaging



**1** LEVEL 1:  
PRIMARY PROTECTION

## MD6307 ACTIVE COMFORT Compression Elbow Sleeve

**BEST FOR** > Pain relief and moderate support while fully active.

**COLORS** > Gray/Black

**Sizes:** XS-XL

**MSRP:** \$19.99 USD

Performance Carton



**1** LEVEL 1:  
PRIMARY PROTECTION

## MD512 Elbow Sleeve / elastic

**BEST FOR** > Support, helping to relieve pain and promote healing

**COLORS** > Black

**Sizes:** S-XL

**MSRP:** \$16.99 USD

Performance Carton



**3** LEVEL 3:  
MAXIMUM PROTECTION

## MD5120 Wrist Guard / adjustable

**BEST FOR** > Support and reducing hyperextension wrist injuries common in football and other contact sports

**COLORS** > Black

**Sizes:** S/M, L/XL

**MSRP:** \$29.99 USD

Clamshell Packaging





**3** LEVEL 3:  
MAXIMUM PROTECTION

## MD454 Wrist Brace / adjustable

**BEST FOR** > Relieving pain from conditions such as carpal tunnel, arthritis, tendonitis and sprains

**COLORS** > Black

**Sizes:** One Size

**MSRP:** \$24.99 USD

 Clamshell Packaging



**2** LEVEL 2:  
ADVANCED PROTECTION

## MD458 Thumb Stabilizer

**BEST FOR** > Immobilizing thumb joint to aid in injury prevention/recovery

**COLORS** > Black

**Sizes:** S/M, L/XL

**MSRP:** \$24.99 USD

 Clamshell Packaging



**2** LEVEL 2:  
ADVANCED PROTECTION

## MD513 Wrist Sleeve / adjustable / elastic

**BEST FOR** > Support, pain relief and to promote healing

**COLORS** > Black

**Sizes:** S/M, L/XL

**MSRP:** \$12.99 USD

 Clamshell Packaging



**1** LEVEL 1:  
PRIMARY PROTECTION

## MD451 Wrist Wrap / adjustable

**BEST FOR** > Wrist support, helping to promote healing and pain relief

**COLORS** > Black

**Sizes:** One Size

**MSRP:** \$14.99 USD

 Clamshell Packaging



## MD231 TRUE ICE™ Therapy Knee / Leg Wrap

**BEST FOR** > Making it much better with the relieving application of ice and compression to knee or leg sprains, strains and overuse soreness

**COLORS** > Black

**Sizes:** One Size Fits Most

MSRP: \$34.99 USD

Performance Carton



## MD235 TRUE ICE™ Therapy Back / Ribs Wrap

**BEST FOR** > Undoing the aches and agonies of back and rib issues. Ice and compression partner to relieve pain and recover movement

**COLORS** > Black

**Sizes:** One Size Fits Most

MSRP: \$39.99 USD

Performance Carton





## MD6201 KINESIOLOGY TAPE

### 16.4' (5m) Roll / Single Roll Box

The total package—simple, effective pain relief that lasts long and is easy to apply

**COLORS** >> Black, Natural, Pink

**MSRP:** \$9.99 USD

 **Paper Box Packaging**



## Athletic Tape

Pro-quality, flexible support to muscles and tendons that also secures and protects bandages

- Can be used to enhance sports equipment such as hockey sticks and baseball bats

**COLORS** >> Black, White, Scarlet, Royal, Pink

### AVAILABLE:

63335 Athletic Tape / 10 yds. / 2-Pack / Box

**MSRP:** \$8.99 USD

61002 Athletic Tape / 10 yds. / 2-Pack / Shrink wrap

**MSRP:** \$14.99 USD

61004 Athletic Tape / 10 yds. / 4-Pack / Shrink wrap (White only)

**MSRP:** \$8.99 USD

61006 Athletic Tape / 10 yds. / 6-Pack / Clamshell (BK/WH only)

**MSRP:** \$8.99 USD



## MD63325 Self Stick Tape

Compression and light support that won't irritate your skin, ideal as tape underwrap

2-Pack, 5 yard rolls

**COLORS** >> Black

**MSRP:** \$8.99 USD

 **Clamshell Packaging**



## MD6330 Underwrap

Increased comfort in taped areas from polyurethane foam that protects skin from tape

- 30 yards per roll
- 9 colors
- 2.75" x 30 yds.

**COLORS** >> Black

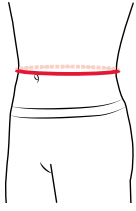
### AVAILABLE:

MD6330-01 Underwrap / 2-Pack BK

**MSRP:** \$8.99 USD



## MEASURE TRUE



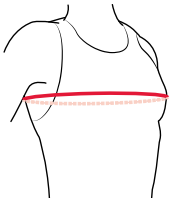
### WAIST

Stand with stomach relaxed (c'mon, you're among friends here). Measure the minimum circumference (skinniest part) in the waist area. Tape should be parallel with the floor.



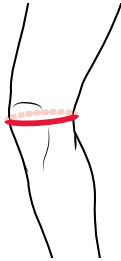
### THIGH

Stand and measure the maximum circumference (meatiest part) of your upper leg near the crotch.



### CHEST

Stand and measure around the fullest part of your chest. Tape should be parallel with the floor. (No superhero chest puffing).



### KNEE

Measure the knee to be protected (you likely figured that). Stand and bend your leg just less than 45 degrees, measure around the largest part of knee, directly over the patella (kneecap).



### KNEE

Stand and bend your leg just less than 45 degrees, measure knee circumference 2" (5cm) below the center or patella (kneecap).



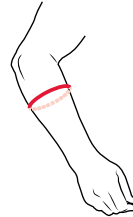
### ELBOW

Bend your elbow to approximately 45 degrees and measure directly over the joint. When ordering a pair, take measurements of both elbows and use the average of the results.



### WRIST

Keeping wrist straight, measure directly over joint, including wrist bones.



### FOREARM

With your arm slightly flexed, measure the fullest part of your forearm, typically midway between your wrist and elbow.



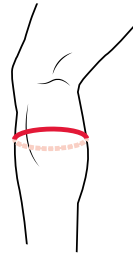
### BICEP

With your arm slightly flexed (remember, "slightly"), measure the fullest part of upper arm/bicep. When ordering a pair, take measurements of both arms and use the average of the results.



### FOOT

Measure circumference at center of arch directly over top of instep.



### CALF

Stand and measure the calf in question (you knew this). Measure at the fullest part of the calf. When ordering a pair, take measurements of both calves and use the average of the results.



### ANKLE

Stand and measure ankle circumference 1"/25cm above center of inner ankle bone tip (the knobby bits). If you measure while seated, flex your foot slightly back toward yourself as you measure.



## PRODUCT SIZING

### PROTECTION » HEX / HEX TUF PADS AND SLEEVES:

#### HEX / HEX TUF KNEE / ELBOW / SHIN PADS { 645 / 6515XDD }

**SIZE:**

Body part circumference:  
( Knee / elbow / shin )

**YOUTH**  
9-10" / 22.9-25.4cm

**XS**  
10-11"  
25.4-27.9cm

**S**  
11-12.5"  
27.9-31.8cm

**M**  
12.5-14"  
31.8-35.6cm

**L**  
14-16"  
35.6-40.6cm

**XL**  
16-18.5"  
40.6-47cm

**2XL**  
18.5-21"  
47-53.3cm

#### HEX TUF VOLLEYBALL KNEE PADS { 6452XDD }

**SIZE:**

Knee circumference:

**XS**  
12-13" / 30-33cm

**S**  
13-14.5" / 33-36.8cm

**M**  
14.5-15.5" / 36.8-39.4cm

**L**  
15.5-16.5" / 39.4-41.9cm

**XL**  
16.5-18.5" / 41.9-47cm

#### HEX FOREARM SLEEVES { 651 }

**SIZE:**

Forearm circumference:  
( Fulltest part of forearm )

**XS**  
7-8" / 17.8-20.3cm

**S**  
8-9.5" / 20.3-24.1cm

**M**  
9.5-11" / 24.1-27.9cm

**L**  
11-12" / 27.9-30.5cm

**XL**  
12-14" / 30.5-35.6cm

**2XL**  
15-17" / 38.1-43.2cm

#### HEX ARM SLEEVES { 6500 / 6500Y / 6501 / 6511 }

**SIZE:**

Elbow circumference:  
( Center of elbow )

**YOUTH**  
7.5-9" / 19.1-22.9cm

**XS**  
9-10" / 22.9-25.4cm

**S**  
10-11" / 25.4-27.9cm

**M**  
11-12" / 27.9-30.5cm

**L**  
12-13" / 30.5-33cm

#### HEX KNEE / ELBOW / SHIN PADS { 6440 / 6440Y }

**SIZE:**

Elbow circumference:  
Knee circumference:  
Shin/Calf circumference:

**YOUTH**  
7.5-9" / 19-23cm  
10-12" / 25-30cm  
9.5-11.5" / 24-29cm

**XS**  
9-10" / 23-25cm  
12-13" / 30-33cm  
11.5-12.5" / 29-32cm

**S**  
10-11" / 25-28cm  
13-14.5" / 33-37cm  
12.5-14" / 32-36cm

**M**  
11-12" / 28-30cm  
14.5-15.5" / 37-39cm  
14-15" / 36-38cm

**L**  
12-13" / 30-33cm  
15.5-16.5" / 39-42cm  
15-16" / 38-41cm

**XL**  
—  
16.5-18.5" / 42-47cm  
16-18" / 41-46cm

**2XL**  
—  
18.5-21" / 47-53cm  
18-20" / 46-51cm

#### HEX / HEX TUF LEG SLEEVES & KNEE PADS { 6440X / 6440XY / 6446 / 6446Y / 6446X / 6446XY / 6400 }

**SIZE:**

Knee circumference:

**YOUTH**  
10-13" / 25.4-33cm

**S**  
13-14.5" / 33-36.8cm

**M**  
14.5-15.5" / 36.8-39.4cm

**L**  
15.5-16.5" / 39.4-41.9cm

**XL**  
16.5-18.5" / 41.9-47cm

**2XL**  
18.5-21" / 47-53.3cm

### PERFORMANCE & PROTECTIVE APPAREL:

#### MEN'S APPAREL

**SIZE:**

Chest size:  
Waist size:

**S**  
34-36" / 86-91cm  
28-30" / 71-76cm

**M**  
36-40" / 91-102cm  
30-34" / 76-86cm

**L**  
40-44" / 102-112cm  
34-38" / 86-97cm

**XL**  
44-48" / 112-122cm  
38-42" / 97-107cm

**2XL**  
48-52" / 122-132cm  
42-46" / 107-117cm

**3XL**  
52-56" / 132-142cm  
46-50" / 117-127cm

#### YOUTH APPAREL

**SIZE:**

Chest size:  
Waist size:

**S**  
25-26.5" / 64-67cm  
22-24" / 56-61cm

**M**  
26.5-29.5" / 67-75cm  
24-26" / 61-66cm

**L**  
29.5-33" / 75-84cm  
26-30" / 66-76cm

**XL**  
33-36" / 84-91cm  
30-34" / 76-86cm

### PROTECTION » CUP & SUPPORT:

#### SHORTS / BOXERS / SUPPORTERS { 325 / 3110 / 9110 / 9130 / 9140 }

**PEEWEE:**

Waist size:

**REG**  
22-23" / 56-58cm

**L**  
23-24" / 58-61cm

**YOUTH:**

Waist size:

**REG**  
24-26" / 61-66cm

**L**  
25-27" / 64-69cm

**TEEN:**

Waist size:

**REG**  
26-30" / 66-76cm

**L**  
30-34" / 76-86cm



## SHORTS / BOXERS / SUPPORTERS ( 325 / 3110 / 9110 / 9130 / 9140 )

### ADULT:

Waist size:

**S**

28-30" / 71-76cm

**M**

30-34" / 76-86cm

**L**

34-38" / 86-97cm

**XL**

38-42" / 97-107cm

**2XL**

42-46" / 107-117cm

**3XL**

46-50" / 117-127cm

### CUP ( 3020 )

### SIZE:

Age:

**PEEWEE**

4-6

**YOUTH**

7-12

**TEEN**

12-15

**ADULT**

15+

## SPORTMED® » ANKLE / FOOT:

### LACED ANKLES / DUAL COMPRESSION ( 195 / 199 / A101 / 5142 )

### SIZE:

Men's shoe size:

Women's shoe size:

**XS**

6-7

7-8

**S**

8-9

9-10

**M**

9-11

10-12

**L**

11-13

12-14

**XL**

14-15

15-16

### ANKLE ( 197 )

### SIZE:

Men's shoe size:

Women's shoe size:

**S**

5-8.5

6-9.5

**M**

8-11

9-12

**L**

11+

12+

### PLANTAR FASCIA SUPPORTS ( 439 )

### ANKLE SUPPORTS ( 4100 / 431 / 432 / 461 / 511 / 5115 / 5122 / 5132 / 5134 / 5135 / 5142 / 5146 / 6301 )

### SIZE:

Men's shoe size:

Women's shoe size:

**S/M**

6-11

7-12

**L/XL**

11-16

12-16

### SIZE:

Men's shoe size:

Women's shoe size:

**S**

6-9

7-10

**M**

9-11

10-12

**L**

11-13

12-14

**XL**

14-15

15-16

**2XL**

15+

16+

### ACTIVE COMFORT ANKLE / ELITE ACHILLES SLEEVE ( 6306 / 4100 )

### SIZE:

Ankle

circumference:

**XS**

7.5-8" / 19-20.3cm

**S**

8-8.5" / 20.3-21.6cm

**M**

8.5-9" / 21.6-22.9cm

**L**

9-9.5" / 22.9-24.1cm

**XL**

9.5-10" / 24.1-25.4cm

### ELITE ENGINEERED ELASTIC™ ANKLE / STEALTH ANKLE ( 5146 / 4311 / 4314 )

### SIZE:

Ankle circumference:

**XS**

7.5-8" / 19-20.3cm

**S**

8-8.5" / 20.3-21.6cm

**M**

8.5-9" / 21.6-22.9cm

**L**

9-9.5" / 22.9-24.1cm

**XL**

9.5-10" / 24.1-25.4cm

**2XL**

10-11" / 25.4-28cm

### BIO-LOGIX™ ANKLE / PHANTOM ANKLE ( 4197 / 4302 / 4303 / 4305 )

### SIZE:

Men's shoe size:

Women's shoe size:

Ankle circumference:

**XS/S**

-8.5

-9.5

-8.5" / -21.6cm

**M/L**

8-11

9-12

8.5-9.5" / 21.6-24.1cm

**XL/2XL**

11+

12+

9.5"+ / 24.1cm+

### PLANTAR FASCIITIS SLEEVE ( 4101 )

### SIZE:

Instep size:

Men's shoe size:

Women's shoe size:

**S**

8-8.75" / 20.3-22.2cm

5.5-7 / 38-40 EU

6.5-8 / 37-39 EU

**M**

8.75-9.75" / 22.2-24.7cm

7.5-9 / 40-42 EU

8.5-10 / 40-41 EU

**L**

9.75-10.5" / 24.7-26.6cm

9.5-11 / 43-44 EU

10.5-12 / 42-43 EU

**XL**

10.5-11.5" / 26.6-29.2cm

11.5-14 / 45-48 EU

12.5-15 / 44-47 EU

## SPORTMED® » KNEE:

### VOW KNEE WRAPS / KNEE DOUBLE WRAP ( 4205 / 4203 / 4201 / 4192 )

### SIZE:

Knee circumference:  
(at center of knee)

**XS**

11.5-13" / 29.2-33cm

**S**

12.5-14.5" / 31.8-36.8cm

**M**

14-16" / 35.6-40.6cm

**L**

15.5-17.5" / 39.4-44.5cm

**XL**

17-19" / 43.2-48.3cm

### KNEE BRACES AND SUPPORTS ( 401 / 402 / 410 / 421 / 422 / 425 / 429 / 429X / 5141 / 6300 / X801 / X605 )

### SIZE:

Knee circumference:  
(at center of knee)

**XS**

12-13" / 30.5-33cm

**S**

13-14" / 33-35.6cm

**M**

14-15" / 35.6-38.1cm

**L**

15-16" / 38.1-40.6cm

**XL**

16-17.5" / 40.6-44.5cm

**2XL**

17.5-19" / 44.5-48.3cm

**3XL**

19-21" / 48.3-53.3cm



## KNEE SUPPORT / ADJUSTABLE ( 4195 )

### SIZE:

Knee circumference:  
(at center of knee)

**S**

12-14.5"  
30.5-36.8cm

**M**

14-17"  
35.6-43.2cm

**L**

16.5-19.5"  
41.9-49.5cm

**XL**

19-22"  
48.3-55.9cm

## KNEE SUPPORT / ADJUSTABLE ( 419 )

### SIZE:

Knee circumference:  
(at center of knee)

**S/M**

12-15" / 30.5-38.1cm

**L/XL**

14.5-17.5" / 36.8-44.5cm

## KNEE STRAP ( 414 )

### SIZE:

Knee circumference:  
(at center of knee)

**REG**

12-15"  
30.5-38cm

**L**

14.5-18.5"  
36.8-47cm

### SIZE:

Knee circumference:  
(2" below center of knee)

**XS**

11.5-12.5"  
29.2-31.8cm

**S**

12.25-13.25"  
31.1-33.7cm

**M**

13-14"  
33-35.6cm

**L**

13.75-14.75"  
34.9-37.5cm

**XL**

14.5-15.5"  
36.8-39.4cm

**2XL**

15.25-16.25"  
38.7-41.3cm

## BIO-LOGIX™ / KNIT KNEES ( 4200 / 5147 / 6305 / 510 / 5116 / 5125 / 5133 / 5149 )

## SPORTMED® » THIGH / CALF / BACK / WAIST:

### THIGH SLEEVES ( 514 / 471 / 472 )

### SIZE:

Thigh circumference:

**S**

19.5-21"  
49.5-53.3cm

**M**

21-22.5"  
53.3-57.2cm

**L**

22.5-24"  
57.2-61cm

**XL**

24-25.5"  
61-64.8cm

### CALF SLEEVES ( 4102 / 441 / X609 / 4102 )

### SIZE:

Calf circumference:

**S**

13-14"  
33-35.6cm

**M**

14-15"  
35.6-38.1cm

**L**

15-16.5"  
38.1-41.9cm

**XL**

16.5-18"  
41.9-45.7cm

### BACK SUPPORTS ( 493 / 495 / 496 / 5119 )

### SIZE:

Waist size:

**S**

25-31" / 63.5-78.7cm

**REG**

28-38" / 71.1-96.5cm

**L**

36-50" / 91.4-127cm

## SPORTMED® » ARM:

### ELBOW SUPPORTS ( 485 / 489 / 512 / 5130 / 5143 )

### SIZE:

Elbow circumference:

**XS**

7-8"  
18-20cm

**S**

9-10"  
22.9-25.4cm

**M**

10-11"  
25.4-27.9cm

**L**

11-12"  
27.9-30.5cm

**XL**

12-13.5"  
30.5-34.3cm

### WRIST SLEEVE ( 5120 / 513 / 5131 )

### SIZE:

Wrist circumference:

**S/M**

Under 7"  
18cm

**L/XL**

Over 7"  
18cm

### SHOULDER SUPPORT ( 462 )

### SIZE:

Chest size:

**REG**

30-36" / 76-91cm

**L**

36-50" / 91-127cm

### SHOULDER WRAP ( 463 / 5126 )

### SIZE:

Chest size:

**S**

30-36" / 76-91cm

**M**

36-42" / 91-107cm

**L**

42-50" / 107-127cm

### ACTIVE COMFORT ELBOW ( 6307 )

### SIZE:

Arm circumference:

**XS**

8-9" / 20.3-22.9cm

**S**

8.75-9.75" / 22.2-24.8cm

**M**

9.5-10.5" / 24.1-26.7cm

**L**

10.25-11.25" / 26-28.6cm

**XL**

11-12" / 27.9-30.5cm

### DUAL LAYER ELBOW SLEEVE ( X607 )

### SIZE:

Arm circumference:

**S**

10-11" / 25.4-27.9cm

**M**

11-12" / 27.9-30.5cm

**L**

12-13" / 30.5-33cm

**XL**

13-14" / 33-35.6cm

## PERFORMANCE » SOCKS AND SLEEVES:

### TARGETED COMPRESSION™ SOCKS AND SLEEVES ( 8831 / 8832 / 8836 / 8841 / 8846 )

### SIZE:

Calf circumference:  
Men's shoe size:  
Women's shoe size:

**XS**

12.5-13" / 32-33cm  
4-6  
5-7

**S**

13-14" / 33-36cm  
6-8  
7-9

**M**

15-16" / 38-41cm  
8-10  
9-11

**L**

16-17" / 41-43cm  
10-12  
11-13

**XL**

17-17.5" / 43-44cm  
12-14  
—

**2XL**

17.5-18" / 44-46cm  
14-16  
—

### COMPRESSION CALF SLEEVES ( 6577 / 6577RF / 6578 )

### SIZE:

Calf circumference:

**S**

12-13" / 30-33cm

**M**

14-15" / 36-38cm

**L**

16-17" / 41-43cm

### SIZE:

Forearm circumference:  
(Just below elbow)

**XS**

6.5-8" / 17-20cm

**S**

8-9.5" / 20-24cm

**M**

9.5-11" / 24-28cm

**L**

11-13" / 28-33cm

### COMPRESSION ARM SLEEVES ( 656 / 6566 / 6566RF / 6579 )



# VISUAL INDEX



**MD6448**  
ELITE HEX® Leg  
Sleeves / pair  
p02



**MD6646**  
HEX® Leg Sleeves / pair  
p02



**MD6440**  
HEX® Knee / Elbow /  
Shin/ Pads / pair  
p02



**MD645**  
Knee / Elbow Pads / pair  
p02



**MD6501**  
ELITE HEX® Shooter  
Arm Sleeve / single  
p03



**MD6500**  
HEX® Shooter Arm  
Sleeve / single  
p03



**MD651**  
HEX® Forearm  
Sleeves / pair  
p03



**MD6511**  
ELITE Compression Arm  
Sleeve / single  
p03



**MD656**  
Compression Arm  
Sleeve / single  
p04



**MD6566**  
Compression Arm  
Sleeves / pair  
p04



**MD6577**  
Compression Calf  
Sleeves / pair  
p04



**MD8841**  
ELITE Compression  
Socks / pair  
p05



**MD8846**  
ELITE Compression Calf  
Sleeves / pair  
p05



**MD8831**  
Rebound Compression  
Socks / pair  
p05



**MD8836**  
mmHg Calf Sleeves / pair  
p05



**MD7610**  
HEX® Sternum Shirt  
p07



**MD7932**  
HEX® Sleeveless Shirt  
/5-pad  
p07



**MD7964**  
ELITE HEX® Tank  
Shirt / 3-Pad  
p07



**MD20220**  
HEX® 2.0 Tank  
p07



**MD749**  
ELITE HEX® 2-Pad  
3/4 Tight  
p08



**MD20820**  
HEX® pad Tight  
p08



**MD750**  
ELITE Compression  
3/4 Tight  
p08



**MD10020**  
Performance  
Compression 3/4 Tight  
p08



**MD8201**  
SUPER CROSS  
Compression™ Short  
w/ hip spica  
p09



**MD8200**  
CROSS Compression™  
Short w/ hip spica  
p09



**MD10180**  
Compression Short  
p09



**MD20180**  
HEX® 2-Pad Short  
p09



**MD7991**  
HEX® Short w/contoured  
wrap-around thigh  
p10



**MD737DD**  
HEX® Dual-Density  
Thudd Short™  
p10



**MD737**  
HEX® Thudd Short™  
p10



**MD7333**  
HEX® Integrated  
Gridle / 5-Pad  
p10



**MD733**  
HEX® Gridle / 2-Pocket  
p11



**MD7935**  
Rival™ 5-Pad Shirt  
p11



**MD7414**  
Rival™ Integrated Girdle  
w/ hard-shell  
thigh guards  
p11



**MD7418**  
Rival™ 7-Pad 3/4 Tight  
w/ hard shell  
thigh guards  
p11



**MD3020**  
FlexCup™  
p13



**MD9255CF**  
Performance Boxer  
w/ FlexCup™  
p13



**MD9140**  
Boxer Brief w/ FlexCup™  
p13



**MD9110**  
Brief w/ FlexCup™  
p13



**MD9130**  
Brief w/ Soft cup  
p14



**MD325**  
Athletic Supporter  
w/ FlexCup™  
p14



**MD3110**  
Athletic Supporter  
2-Pack  
p14



**MD4305**  
Phantom Ankle Brace  
p16



**MD4303**  
Phantom Ankle Brace  
w/ advanced strapping  
& flex-support  
stirrup stays  
p16



**MD5146**  
ELITE Engineered  
Elastic™ Ankle Support  
w/ figure-6 strap & stays  
p16



**MD195®**  
Ankle Brace w/ straps  
p16



**MD199**  
Ankle Brace w/  
lace-up / stays  
p17



**MD4311**  
Stealth Cleat Ankle  
Brace w/ minimal  
coverage &  
flex-support stays  
p17



**MD5132**  
ELITE Engineered  
Elastic™ Ankle Sleeve  
p17



**MD432**  
Ankle Support w/  
figure-8 strap  
p17



**MD5221**  
HyperBlend™  
Ankle Sleeve  
p18



**MD5135**  
FREE LASTICS™ Plantar  
Fascia Sleeve  
p18



**MD5121**  
Ankle Sleeve  
4-way elastic  
p18



**MD6306**  
Active Comfort  
Ankle Sleeve  
p18



**MD511**  
Ankle Brace / elastic  
p19



**MD4200**  
ELITE Bio-Logix™  
Knee Brace  
p19



**MD429X**  
Knee Brace w/  
polycentric hinges &  
cross straps  
p19



**MD429**  
Knee Brace w/  
polycentric hinges  
p19



**MD422**  
Knee Brace w/ dual  
disk hinges  
p20



**MD5133**  
ELITE Engineered  
Elastic™ Knee Sleeve  
w/ gel/buttress & stays  
p20



## VISUAL INDEX



**MD425**  
Knee Support w/ stays  
& cross straps  
p20



**MD4201**  
VOW™ Knee Wrp  
w/ Stays  
p20



**MD421**  
Knee Support w/ stays  
p21



**MD5116**  
Knee Sleeve / 4-way  
elastic w/ gel buttress  
& stays  
p21



**MD4192**  
Knee Support  
double wrap  
p21



**MD5125**  
Knee Sleeve / 4-way  
elastic w/ gel buttress  
p21



**MD419**  
Knee Support /  
adjustable wrap  
p22



**MD414**  
Knee Strap / patella  
p22



**MD410**  
Knee Support with  
Sorbothane® Pad  
p22



**MD5211**  
HyperBlend™  
Knee Sleeve  
p22



**MD6305**  
ACTIVE Comfort  
Compression  
Knee Sleeve  
p23



**MD5113**  
Knee Sleeve  
4-way elastic  
p23



**MD402**  
Knee Sleeve  
open patella  
p23



**MD401**  
Knee Sleeve  
p23



**MD510**  
Knee Sleeve / elastic  
p24



**MD478**  
Thigh Wrap / adjustable  
p24



**MD475**  
Groin Wrap / adjustable  
p24



**MD514**  
Thigh Sleeve / elastic  
p24



**MD441**  
Calf Sleeve  
p25



**MD493**  
Back Stabilizer  
p25



**MD495**  
Back Support  
p25



**MD499**  
Waist Trimmer  
w/ Core Support  
p25



**MD491**  
Waist Trimmer  
p26



**MD498**  
Women's Waist Trimmer  
p26



**MD5126**  
Shoulder Wrap  
4-way elastic  
p26



**MD463**  
Shoulder Wrap  
p26



**MD5233**  
HyperBlend™ Elbow  
Sleeve w/ strap  
p27



**MD5130**  
HyperBlend™ Elbow  
Sleeve 4-way elastic  
w/ gel buttresses  
p27



**MD485**  
Elbow Support w/ strap  
p27



**MD489**  
Elbow Support w/ strap  
p27



**MD5136**  
Elbow Sleeve /  
4-way elastic  
p28



**MD6307**  
ACTIVE Comfort  
Compression  
Elbow Sleeve  
p28



**MD512**  
Elbow Sleeve / elastic  
p28



**MD5120**  
Wrist Guard / adjustable  
p28



**MD454**  
Wrist Brace / adjustable  
p29



**MD458**  
Thumb Stabilizer  
p29



**MD513**  
Wrist Sleeve /  
adjustable / elastic  
p29



**MD451**  
Wrist Wrap / adjustable  
p29



**MD231**  
TRUE ICE™ Therapy Knee  
/ Leg Wrap  
p30



**MD235**  
TRUE ICE™ Therapy  
Back / Ribs Wrap  
p30



**MD6201**  
Kinesiology Tape  
p31



**Athletic  
Tape**  
p31



**MD63325**  
Self Stick Tape  
p31



**MD6330**  
Underwrap  
p31

©McDavid Inc.  
11488 Slater Ave, Fountain Valley, CA, 92708  
[mcdavidusa.com](http://mcdavidusa.com)

Got Questions? | (800) 233-6956 | [cs@unitedspb.com](mailto:cs@unitedspb.com)

