



SOCCER

Fall/Winter 2021





UNDER ARMOUR

**THE ONLY
WAY IS
THROUGH.**





VISION

**TO INSPIRE YOU WITH PERFORMANCE
SOLUTIONS YOU NEVER KNEW
YOU NEEDED BUT CAN'T IMAGINE
LIVING WITHOUT.**

MISSION

**UNDER ARMOUR
MAKES YOU BETTER.**

SOCCER —

MEN'S/WOMEN'S/YOUTH

- 002** SOCCER UNIFORMS
- 012** SOCCER APPAREL
- 023** SOCCER BAGS
- 024** SOCCER SOCKS
- 026** SOCCER PROTECTIVE
- 027** SOCCER GLOVES
- 028** UNIFORM ORDERING INFO



SOCCER ARMOURFUSE

- Brilliant, vibrant team colors permanently fused directly into textiles
- Limitless customization, all-inclusive pricing with exclusive UA designs and customized prints
- 37 different colors and 16 prints available
- 6 piece minimum order



NEW**PRIMETIME COLLAR JERSEY**

FIRST SHIP: 6/1/2021 // M: SM-2XL, W: SM-XL

SHORTSLEEVE	SIZE	PRICE
UJJP3M (M)	SM-2XL	\$100.00
UJJP3W (W)	SM-XL	\$100.00
LONGSLEEVE		
UJJP4M (M)	SM-2XL	\$110.00
UJJP4W (W)	SM-XL	\$110.00

- 4.6 oz. lightweight fabric with 4-way stretch, and accelerated drying properties
- Contrast color binding on collar, side panels and sleeve cuffs
- Threadvent Mesh side panels for increased breathability

ADDITIONAL LENGTH OPTIONS FOUND ON PAGE 32

BASE JERSEY DESIGN IS APPROVED FOR HS PLAY

HS COMPLIANT AWAY JERSEYS MUST BE COMPLETELY WHITE WITH NO DESIGN DETAILS

**NEW****PRIMETIME SHORT**

FIRST SHIP: 6/1/2021 // M: SM-2XL, W: SM-XL

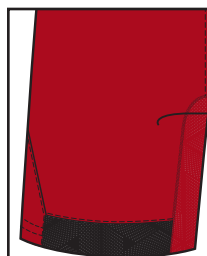
STYLE	INSEAM	SIZE	PRICE
UJUSP1M (M)	7.5"	SM-2XL	\$65.00
UJUSP1W (W)	4.5"	SM-XL	\$65.00

- 4.6 oz. lightweight fabric with 4-way stretch, and accelerated drying properties
- Threadvent Mesh back hem inset & gusset
- Encased front elastic waistband with internal drawcord and exposed back elastic waistband

ADDITIONAL LENGTH OPTIONS FOUND ON PAGE 32

**UA AURA****WOMEN'S**

SHOWN WITH PRIMETIME SHORT 1



PRIMETIME SHORT 1 DETAIL



PRIMETIME SHORT 2 DETAIL

ALL PRIMETIME JERSEY DESIGNS AVAILABLE IN SHORTSLEEVE & LONGSLEEVE

ARMOURFUSE® UNIFORMS // ORDERING INFORMATION AND CUSTOMER SERVICE: 1-800-594-9082 // www.underarmourteamuniforms.com

FILL-IN LIFECYCLE TIMING FOUND ON PAGE 34. DECORATION OPTIONS AND ORDERING INFORMATION ARE AVAILABLE ON PAGES 28-34.

PRIMETIME



UA FUSION

MEN'S
SHOWN WITH PRIMETIME SHORT 2



UA SHOWCASE

WOMEN'S
SHOWN WITH PRIMETIME SHORT 1



UA VELOCITY

MEN'S
SHOWN WITH PRIMETIME SHORT 1

ALL PRIMETIME JERSEY DESIGNS AVAILABLE IN SHORTSLEEVE & LONGSLEEVE



ARMOURFUSE® UNIFORMS // ORDERING INFORMATION AND CUSTOMER SERVICE: 1-800-594-9082 // www.underarmourteamuniforms.com

FILL-IN LIFECYCLE TIMING FOUND ON PAGE 34. DECORATION OPTIONS AND ORDERING INFORMATION ARE AVAILABLE ON PAGES 28-34.

NEW**PRIMETIME V-NECK JERSEY**

FIRST SHIP: 6/1/2021 // M: SM-2XL, W: SM-XL

SHORTSLEEVE	SIZE	PRICE
UJUP1M (M)	SM-2XL	\$100.00
UJUP1W (W)	SM-XL	\$100.00
LONGSLEEVE		
UJUP2M (M)	SM-2XL	\$110.00
UJUP2W (W)	SM-2XL	\$110.00

- 4.6 oz. lightweight fabric with 4-way stretch, and accelerated drying properties
- Contrast color binding on collar, side panels and sleeve cuffs
- Threadvent Mesh side panels for increased breathability

ADDITIONAL LENGTH OPTIONS FOUND ON PAGE 32

BASE JERSEY DESIGN IS APPROVED FOR HS PLAY

HS COMPLIANT AWAY JERSEYS MUST BE COMPLETELY WHITE WITH NO DESIGN DETAILS

V-NECK AVAILABLE FOR GOALKEEPER ORDERS**NEW****PRIMETIME SHORT**

FIRST SHIP: 6/1/2021 // M: SM-2XL, W: SM-XL

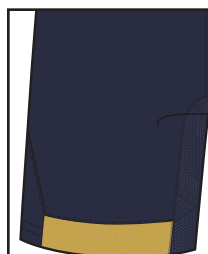
STYLE	INSEAM	SIZE	PRICE
UJUSP1M (M)	7.5"	SM-2XL	\$65.00
UJUSP1W (W)	4.5"	SM-XL	\$65.00

- 4.6 oz. lightweight fabric with 4-way stretch, and accelerated drying properties
- Threadvent Mesh back hem inset & gusset
- Encased front elastic waistband with internal drawcord and exposed back elastic waistband

ADDITIONAL LENGTH OPTIONS FOUND ON PAGE 32

**UA AURA****MEN'S**

SHOWN WITH PRIMETIME SHORT 1



PRIMETIME SHORT 1 DETAIL



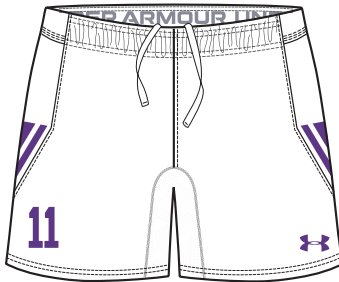
PRIMETIME SHORT 2 DETAIL

ALL PRIMETIME JERSEY DESIGNS AVAILABLE IN SHORTSLEEVE & LONGSLEEVE

ARMOURFUSE® UNIFORMS // ORDERING INFORMATION AND CUSTOMER SERVICE: 1-800-594-9082 // www.underarmourteamuniforms.com

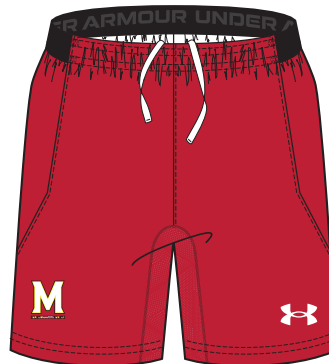
FILL-IN LIFECYCLE TIMING FOUND ON PAGE 34. DECORATION OPTIONS AND ORDERING INFORMATION ARE AVAILABLE ON PAGES 28-34.

PRIMETIME



UA FUSION

WOMEN'S
SHOWN WITH PRIMETIME SHORT 2



UA SHOWCASE

MEN'S
SHOWN WITH PRIMETIME SHORT 1



UA VELOCITY

WOMEN'S
SHOWN WITH PRIMETIME SHORT 1

ALL PRIMETIME JERSEY DESIGNS AVAILABLE IN SHORTSLEEVE & LONGSLEEVE



ARMOURFUSE® UNIFORMS // ORDERING INFORMATION AND CUSTOMER SERVICE: 1-800-594-9082 // www.underarmourteamuniforms.com

FILL-IN LIFECYCLE TIMING FOUND ON PAGE 34. DECORATION OPTIONS AND ORDERING INFORMATION ARE AVAILABLE ON PAGES 28-34.

GAMETIME CREW JERSEY

LAST SEASON OFFERED

M: SM-2XL, W: SM-XL, Y: YSM-YXL

SHORTSLEEVE	SIZE	PRICE
UJW1CM (M)	SM-2XL	\$73.00
UJW1CW (W)	SM-XL	\$73.00
UJW1CY (Y)	YSM-YXL	\$68.00
LONGSLEEVE		
UJW2CM (M)	SM-2XL	\$78.00
UJW2CW (W)	SM-XL	\$78.00
UJW2CY (Y)	YSM-YXL	\$73.00

- Lightweight 4-way stretch with moisture transport and maximum breathability
- Stretch flat knit front & back
- Stretch mesh side panels

ADDITIONAL LENGTH OPTIONS FOUND ON PAGE 32

BASE JERSEY DESIGN IS APPROVED FOR HS PLAY

HS COMPLIANT AWAY JERSEYS MUST BE COMPLETELY WHITE WITH NO DESIGN DETAILS

GAMETIME SHORT 2.0

LAST SEASON OFFERED

M: SM-2XL, W: SM-XL, Y: YSM-YXL

STYLE	INSEAM	SIZE	PRICE
UJUS12M (M)	7.5"	SM-2XL	\$63.00
UJUS12W (W)	4.5"	SM-XL	\$63.00
UJUS12Y (Y)	6"	YSM-YXL	\$58.00

- Armourfuse® short with stretch flat knit front and stretch mesh back
- Top stitched for fabric strength and appearance

ADDITIONAL LENGTH OPTIONS FOUND ON PAGE 32



CHANNEL

ALL GAMETIME CREW JERSEY DESIGNS AVAILABLE IN SHORTSLEEVE & LONGSLEEVE



ARMOURFUSE® UNIFORMS // ORDERING INFORMATION AND CUSTOMER SERVICE: 1-800-594-9082 // www.underarmourteamuniforms.com

FILL-IN LIFECYCLE TIMING FOUND ON PAGE 34. DECORATION OPTIONS AND ORDERING INFORMATION ARE AVAILABLE ON PAGES 28-34.

GAMETIME



QUARTER

SASH

CHECKER

ALL GAMETIME CREW JERSEY DESIGNS AVAILABLE IN SHORTSLEEVE & LONGSLEEVE



ARMOURFUSE® UNIFORMS // ORDERING INFORMATION AND CUSTOMER SERVICE: 1-800-594-9082 // www.underarmourteamuniforms.com

FILL-IN LIFECYCLE TIMING FOUND ON PAGE 34. DECORATION OPTIONS AND ORDERING INFORMATION ARE AVAILABLE ON PAGES 28-34.

GAMETIME V-NECK JERSEY

LAST SEASON OFFERED

M: SM-2XL, W: SM-XL, Y: YSM-YXL

STYLE	SIZE	PRICE
UJUI10M (M)	SM-2XL	\$68.00
UJUI10W (W)	SM-XL	\$68.00
UJUI10Y (Y)	YSM-YXL	\$63.00

- Armourfuse® jersey with stretch flat knit front and stretch mesh back
- V-Neck construction for full flexibility and comforts

ADDITIONAL LENGTH OPTIONS FOUND ON PAGE 32
 BASE JERSEY DESIGN IS APPROVED FOR HS PLAY
 HS COMPLIANT AWAY JERSEYS MUST BE COMPLETELY WHITE WITH NO DESIGN DETAILS

GAMETIME SHORT 2.0

LAST SEASON OFFERED

M: SM-2XL, W: SM-XL, Y: YSM-YXL

STYLE	INSEAM	SIZE	PRICE
UJUI12M (M)	7.5"	SM-2XL	\$63.00
UJUI12W (W)	4.5"	SM-XL	\$63.00
UJUI12Y (Y)	6"	YSM-YXL	\$58.00

- Armourfuse® short with stretch flat knit front and stretch mesh back
- Top stitched for fabric strength and appearance

ADDITIONAL LENGTH OPTIONS FOUND ON PAGE 32

PRACTICE PINNIE

LAST SEASON OFFERED

SM-2XL, OVERSIZE 3XL

STYLE	SIZE	PRICE
UJUIPPM (M)	SM-2XL	\$28.00

- Armourfuse® sublimated practice piece
- All colors/decoration in Armourfuse®

ADDITIONAL LENGTH OPTIONS FOUND ON PAGE 32
 OVERSIZED SURCHARGE +\$5 PER SIZE



GAMETIME V-NECK JERSEY AVAILABLE IN SHORTSLEEVE ONLY



ARMOURFUSE® UNIFORMS // ORDERING INFORMATION AND CUSTOMER SERVICE: 1-800-594-9082 // www.underarmourteamuniforms.com

FILL-IN LIFECYCLE TIMING FOUND ON PAGE 34. DECORATION OPTIONS AND ORDERING INFORMATION ARE AVAILABLE ON PAGES 28-34.

GAMETIME



COUNTER



AZ



CALCIO

GAMETIME V-NECK JERSEY AVAILABLE IN SHORTSLEEVE ONLY



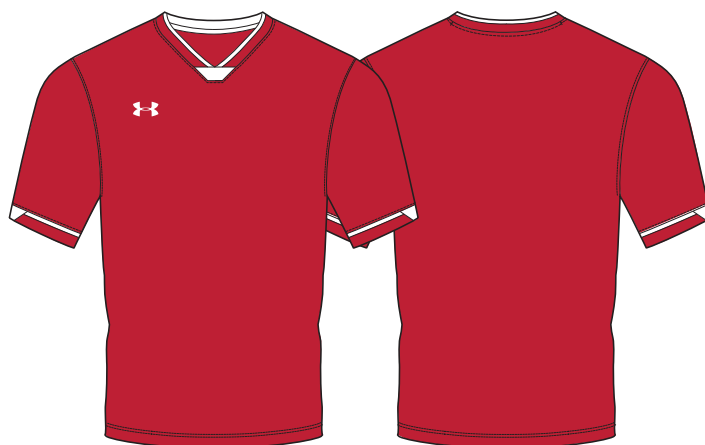
ARMOURFUSE® UNIFORMS // ORDERING INFORMATION AND CUSTOMER SERVICE: 1-800-594-9082 // www.underarmourteamuniforms.com

FILL-IN LIFECYCLE TIMING FOUND ON PAGE 34. DECORATION OPTIONS AND ORDERING INFORMATION ARE AVAILABLE ON PAGES 28-34.

SOCCER **FW21**

1356896
UA SQUAD JERSEY
\$45.00 | FITTED | SM-2XL
WOMEN'S: 1356898 | \$45.00 | SM-XL
YOUTH: 1356911 | \$40.00 | YSM-YXL
FIRST SHIP: C/O

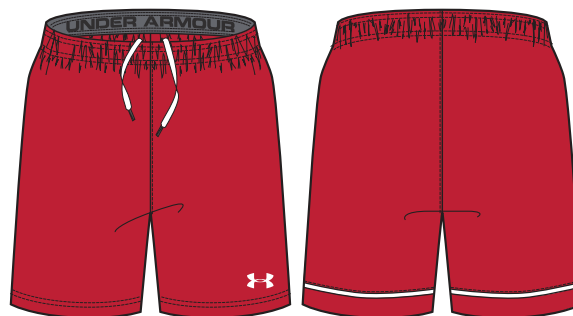
- Lightweight, dries fast, stretch without spandex
- Circular knit, reflexx stretch
- Microthread

100% POLYESTER
heatgear
YOUTH OFFERED IN ALL COLORS

1356897
UA SQUAD SHORT
\$30.00 | FITTED | SM-2XL
WOMEN'S: 1356899 | \$30.00 | SM-XL
YOUTH: 1356912 | \$25.00 | YSM-YXL
FIRST SHIP: C/O

- Lightweight, dries fast, stretch without spandex
- Circular knit, reflexx stretch
- Microthread

100% POLYESTER
heatgear
YOUTH OFFERED IN ALL COLORS


MEN
7 1/2"
INSEAM
YOUTH
7"
INSEAM
WOMEN
4 1/2"
INSEAM



1364951 UA MATCH 2.0 JERSEY

\$40.00 | **FITTED** | SM-2XL

WOMEN'S: 1364962 | \$40.00 | SM-XL

YOUTH: 1364964 | \$35.00 | YXS-YXL

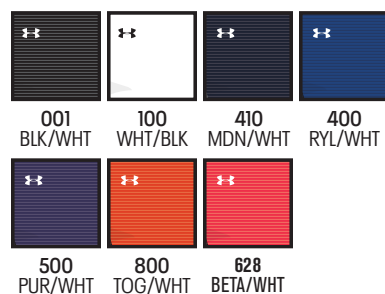
FIRST SHIP: C/O

- Lightweight microthread fabric with 4-way stretch
- Updated design lines and fit
- Strategic placement of Golaso mesh for enhanced breathability

100% POLYESTER

heatgear™

YOUTH OFFERED IN ALL COLORS



1364961 UA MATCH 2.0 SHORT

\$28.00 | **FITTED** | SM-2XL

WOMEN'S: 1364963 | \$28.00 | SM-XL

YOUTH: 1364965 | \$25.00 | YXS-YXL

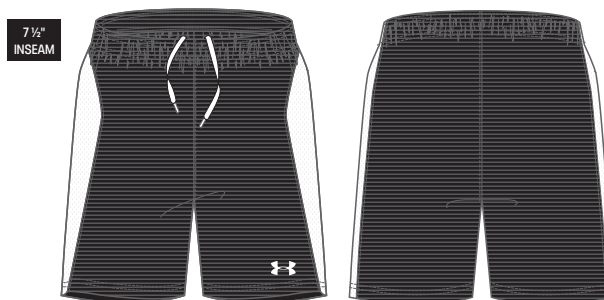
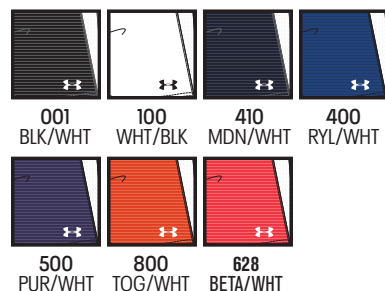
FIRST SHIP: C/O

- Lightweight microthread fabric with 4-way stretch
- Updated design lines and fit
- Strategic placement of Golaso mesh for enhanced breathability

100% POLYESTER

heatgear™

YOUTH OFFERED IN ALL COLORS



1328131**UA MAQUINA 2.0 JERSEY**\$35.00 | **LOOSE** | SM-2XL**WOMEN'S: 1328132** | \$35.00 | SM-XL**YOUTH: 1328133** | \$30.00 | YSM-YXL

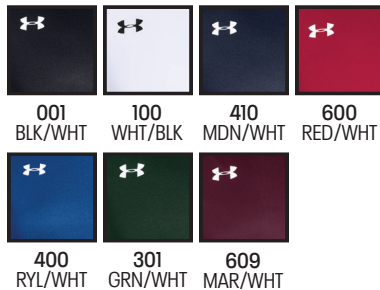
FIRST SHIP: C/O // LAST SHIP: 4/30/2023

- Moisture Transport System Wicks sweat to keep you dry and light
- Tailored performance fit with 4-way stretch fabrication allows for comfort and mobility in any direction
- Piped sleeve and collar detailing

100% POLYESTER

heatgear

YOUTH OFFERED IN ALL COLORS

**1328134****UA MAQUINA 2.0 SHORT**\$25.00 | **LOOSE** | SM-2XL**WOMEN'S: 1328135** | \$25.00 | SM-XL**YOUTH: 1328136** | \$22.00 | YSM-YXL

FIRST SHIP: C/O // LAST SHIP: 4/30/2023

- Moisture Transport System Wicks sweat to keep you dry and light
- Tailored performance fit with 4-way stretch fabrication allows for comfort and mobility in any direction

100% POLYESTER

heatgear

YOUTH OFFERED IN ALL COLORS



MEN	7 1/2"
INSEAM	
YOUTH	7"
INSEAM	
WOMEN	5"
INSEAM	



1305828 UA GOLAZO 2.0 JERSEY

\$24.00 | **LOOSE** | SM-2XL

WOMEN'S: 1305837 | \$24.00 | SM-XL

YOUTH: 1305840 | \$22.00 | YSM-YXL

FIRST SHIP: C/O // LAST SHIP: 4/30/2022

- Moisture Transport System wicks sweat to keep you dry & light
- 4-way stretch fabrication allows greater mobility in any direction

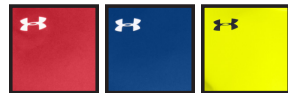
100% POLYESTER

heatgear

YOUTH OFFERED IN ALL COLORS, 731 NOT OFFERED IN WOMEN'S



001 BLK/WHT 100 WHT/BLK 040 GPH/WHT 410 MDN/WHT



600 RED/WHT 400 RYL/WHT 731 HVY/BLK



MEN
7½"
INSEAM

YOUTH
7"
INSEAM

WOMEN
5"
INSEAM

1305830 UA GOLAZO 2.0 SHORT

\$20.00 | **LOOSE** | SM-2XL

WOMEN'S: 1305841 | \$20.00 | SM-XL

YOUTH: 1305841 | \$18.00 | YSM-YXL

FIRST SHIP: C/O // LAST SHIP: 4/30/2022

- Moisture Transport System wicks sweat to keep you dry & light
- 4-way stretch fabrication allows greater mobility in any direction

100% POLYESTER

heatgear

YOUTH OFFERED IN ALL COLORS



001 BLK/WHT 100 WHT/BLK 410 MDN/WHT 600 RED/WHT 400 RYL/WHT

1364966 UA WALL GK JERSEY

\$45.00 | **LOOSE** | SM-2XL

YOUTH: 1364967 | \$40.00 | YXS-YXL

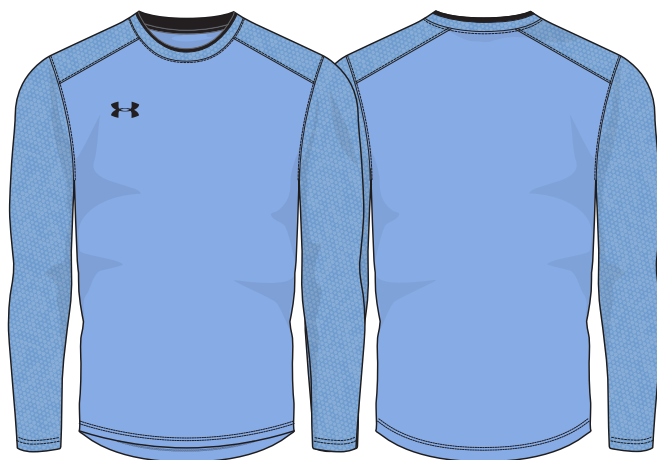
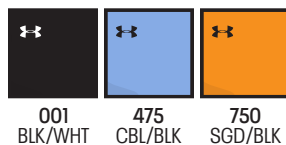
FIRST SHIP: C/O

- Lightweight microthread 4-Way Stretch fabric
- Updated design lines
- Embossed print on sleeves

100% POLYESTER

heatgear™

YOUTH OFFERED IN ALL COLORS



1287906 PERFORMANCE TRAINING BIB

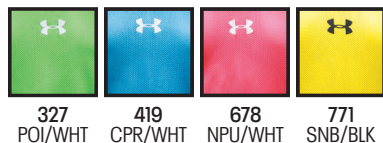
\$12.00 | **LOOSE** | XS (OSFA YOUTH), LG (OSFA ADULT)

FIRST SHIP: C/O // LAST SHIP: 4/30/2021

- Breathable and lightweight mesh design for training

100% POLYESTER

heatgear™



NEW**1365412****CHALLENGER TRAINING JACKET**\$65.00 | **FITTED** | SM-2XL**WOMEN'S: 1365427** | \$65.00 | XS-XL**YOUTH: 1365420** | \$60.00 | YXS-YXL

FIRST SHIP: 6/20/2021

- Durable knit fabric is light, tough & breathable
- Bomber-inspired cuffs, collar & hem
- Fast-drying, wicking, & lightweight fabric for superior performance
- Fitted, with updated design lines

100% POLYESTER

Y = YOUTH OFFERING

**NEW****1365417****CHALLENGER TRAINING PANT**\$50.00 | **FITTED** | SM-2XL**WOMEN'S: 1365432** | \$50.00 | XS-XL**YOUTH: 1365421** | \$45.00 | YXS-YXL

FIRST SHIP: 6/20/2021

- 4-way stretch fabrication allows for greater mobility in any direction
- Fast-drying, wicking, & lightweight fabric for superior performance
- Encased elastic waistband with internal drawcord
- Bottom ankle zippers for easy on/off during training
- Fitted, with updated design lines and a tapered leg

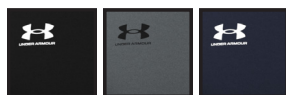
100% POLYESTER

Y = YOUTH OFFERING

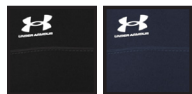


NEW**1365409****CHALLENGER MIDLAYER****\$55.00 | FITTED | SM-2XL****FIRST SHIP: 6/20/2021**

- 4-way stretch fabrication allows for greater mobility in any direction
- Fast-drying, wicking, & lightweight fabric for superior performance

100 % POLYESTER001
BLK012
PITCH GRY410
MDN**NEW****1365425****W'S CHALLENGER MIDLAYER****\$55.00 | FITTED | XS-XL****FIRST SHIP: 6/20/2021**

- 4-way stretch fabrication allows for greater mobility in any direction
- Fast-drying, wicking, & lightweight fabric for superior performance

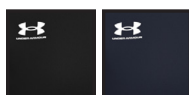
100 % POLYESTER001
BLK410
MDN

NEW**1365411****CHALLENGER STORM SHELL****\$80.00 | FITTED | SM-2XL****WOMEN'S: 1365426 | \$80.00 | XS-XL****FIRST SHIP: 6/20/2021**

- UA Storm technology repels water without sacrificing breathability
- 4-way stretch woven fabrication allows greater mobility
- Zip pockets for secure storage

87 % POLYESTER, 13 % ELASTANE**STORM****001
BLK****012
PITCH GRY****NEW****1367740****W'S CHALLENGER LS TRAINING TOP****\$35.00 | FITTED | XS-XL****YOUTH : 1367933 | \$25.00 | YXS-YXL****FIRST SHIP: 6/20/2021**

- 4-way stretch fabrication allows for greater mobility in any direction
- Fast-drying, wicking, & lightweight fabric for superior performance
- Constructed with a shaped hem and mesh side panels for increased breathability
- Anti-odor technology prevents the growth of odor causing microbes

100% POLYESTER**YOUTH OFFERED IN ALL COLORS, LONGSLEEVE NOT AVAILABLE IN MEN'S****001
BLK****410
MDN**

NEW**1365408****CHALLENGER TRAINING TOP**\$25.00 | **FITTED** | SM-2XL**YOUTH SS: 1366494** | \$20.00 | YXS-YXL

FIRST SHIP: 6/20/2021

- 4-way stretch fabrication allows for greater mobility in any direction
- Fast-drying, wicking, & lightweight fabric for superior performance
- Constructed with a shaped hem and mesh side panels for increased breathability
- Anti-odor technology prevents the growth of odor causing microbes

100% POLYESTER

Y = YOUTH OFFERING

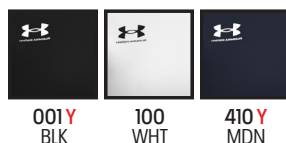
**NEW****1367767****W'S CHALLENGER SS TRAINING TOP**\$25.00 | **FITTED** | XS-XL**YOUTH : 1366494** | \$20.00 | YXS-YXL

FIRST SHIP: 6/20/2021

- 4-way stretch fabrication allows for greater mobility in any direction
- Fast-drying, wicking, & lightweight fabric for superior performance
- Constructed with a shaped hem and mesh side panels for increased breathability
- Anti-odor technology prevents the growth of odor causing microbes

100% POLYESTER

Y = YOUTH OFFERING

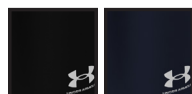


NEW**1365416****CHALLENGER TRAINING SHORT****\$25.00 | FITTED | SM-2XL****YOUTH: 1366495 | \$20.00 | YXS-YXL****FIRST SHIP: 6/20/2021**

- 4-way stretch fabrication allows for greater mobility in any direction
- Fast-drying, wicking, & lightweight fabric for superior performance
- Constructed with mesh side panels for strategic increased breathability
- Encased elastic waistband with internal drawcord
- Anti-odor technology prevents the growth of odor-causing microbes
- Inseam: 7.5"

100% POLYESTER**Y = YOUTH OFFERING****001Y**
BLK**012**
PITCH GRY**410Y**
MDN**NEW****1365431****W'S CHALLENGER TRAINING SHORT****\$25.00 | FITTED | XS-XL****YOUTH: 1366495 | \$20.00 | YXS-YXL****FIRST SHIP: 6/20/2021**

- 4-way stretch fabrication allows for greater mobility in any direction
- Fast-drying, wicking, & lightweight fabric for superior performance
- Constructed with mesh side panels for strategic increased breathability
- Encased elastic waistband with internal drawcord
- Anti-odor technology prevents the growth of odor-causing microbes
- Inseam: 4.5"

100% POLYESTER**Y = YOUTH OFFERING****001Y**
BLK**410Y**
MDN

NEW**1356778****ACCELERATE TERRACE JACKET****\$120.00 | FITTED | SM-2XL****FIRST SHIP: 6/20/2021**

- Sport inspired off-pitch look
- 4-way stretch woven fabrication allows for greater mobility in any direction
- UA Storm technology repels water without sacrificing breathability
- Slightly oversized hood construction for added coverage
- Secure, zip hand pockets & open chest pockets
- Pleated back construction with dropped hem for a fuller cut & fit

95% NYLON, 5% ELASTANE**STORM**003
BLK010
JET GRY**NEW****1365423****W'S ACCELERATE TERRACE JACKET****\$100.00 | FITTED | XS-XL****FIRST SHIP: 6/20/2021**

- Sport inspired off-pitch look
- 4-way stretch woven fabrication allows for greater mobility in any direction
- UA Storm technology repels water without sacrificing breathability
- Slightly oversized hood construction for added coverage
- Secure, zip hand pockets & open chest pockets
- Pleated back construction with dropped hem for a fuller cut & fit

95% NYLON, 5% ELASTANE**STORM**001
BLK410
MDN

1350097 UA ALL SPORT BACKPACK

\$55.00 | 19.7" X 11.9" X 6.3"
CUB. VOL. 25 L

FIRST SHIP: C/O

- UA Storm technology delivers an element-battling, highly water-resistant finish
- Airvent front panel & padded back panel for ultimate breathability & comfort
- Stow-away front carrier net can fit regulation size soccer ball, football or basketball
- Second bag strap clip for multiple ways to carry
- Front valuables pocket
- Top grab handle
- Side water bottle pocket

86% POLYESTER, 14% NYLON



1350101 UA TEAM BALL BAG

\$45.00 | 16" X 16" X 34"

FIRST SHIP: C/O

- Open-hole mesh bag can hold 12+ full-size soccer balls, basketballs, footballs or volleyballs
- Secure, zip pocket to store a clipboard, stopwatch, cones, pinnies & more
- Adjustable cinch top closure with shoulder strap for easy carry

100% POLYESTER



001
BLK/WHT

SOCKS FW21 ▶

1300033

UA GLOBAL PERFORMANCE OVER-THE-CALF

\$17.99 | SINGLE PAIR | MD, LG

YOUTH: 1300034 | \$16.99 | YLG

FIRST SHIP: C/O // LAST SHIP: 12/15/2021

- Strategic Charged Cotton Cushion protects high-impact areas of feet
- Left/Right Technology for true anatomical fit
- Embedded Arch Support helps reduce foot fatigue
- ArmourDry™ Material wicks moisture, accelerates evaporation
- ArmourBlock® Technology helps prevent growth of odor-causing bacteria in the sock

43% NYLON, 28% POLYESTER, 26% COTTON, 3% SPANDEX

YOUTH OFFERED IN ALL COLORS



1264790

UA SOCCER OVER-THE-CALF

\$9.99 | SINGLE PAIR | MD, LG

YOUTH: 1264788 | \$8.99 | YLG

FIRST SHIP: C/O // LAST SHIP: 12/15/2021

- Embedded Arch Support helps reduce foot fatigue
- ArmourDry™ Material wicks moisture, accelerates evaporation
- ArmourBlock® Technology helps prevent growth of odor-causing bacteria

96% NYLON, 4% SPANDEX

YOUTH OFFERED IN ALL COLORS

040/GPH, 500/PUR & 625/CRD NOT SHOWN



1270244**UA TEAM OVER-THE-CALF**

\$9.99 | SINGLE PAIR | MD, LG, XL

YOUTH: 1270245 | \$8.99 | YLG

FIRST SHIP: C/O // LAST SHIP: 12/15/2021

- Strategic Cushion protects high-impact areas of feet
- Embedded Arch Support helps reduce foot fatigue
- ArmourDry™ Material wicks moisture, accelerates evaporation
- ArmourBlock® Technology helps prevent growth of odor-causing bacteria

84% POLYESTER, 14% NYLON, 2% SPANDEX

Y = YOUTH OFFERING

609/MAR NOT SHOWN

**1287965****UA SHINGUARD SLEEVES**

\$9.99 | SM, MD, LG

FIRST SHIP: C/O

- Ergonomic shape provides comfort and stability
- Sold as a pair



1273610 UA ARMOUR FLEX PRO SHINGUARD

\$19.99 | SM, MD, LG

FIRST SHIP: C/O

- Armour Flex shell provides flexible protection
- Charged foam padding
- Sold with ergonomic calf sleeves
- Meets NOCSAE standards



1273609 UA ARMOUR FLEX SHINGUARD

\$9.99 | SM, MD, LG

FIRST SHIP: C/O

- Lightweight and flexible protection
- Vented shell to allow air flow to the skin



1305519

UA MAGNETICO PREMIER

\$130.00 | COMES IN PAIRS | SIZES: 7-12

FIRST SHIP: C/O

- 4mm high performance german latex palm
- Rolled finger construction
- Mesh thumb gusset allows maximum range and breathability
- Elastic wrist wrap for custom fit and support



102
WHT/SLV

1328183

UA FIELD PLAYERS GLOVE 2.0

\$30.00 | COMES IN PAIRS | SIZES: SM-XL

FIRST SHIP: C/O

- Built with ColdGear® Infrared material for maximum moisture management and lightweight performance, keeping you warmer longer
 - Performance fleece index and thumb nose wipe
- PALM:
- Integrated silicone grip gives you the control you need

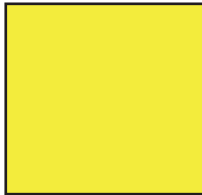
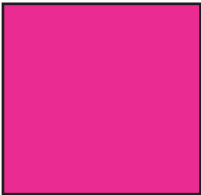
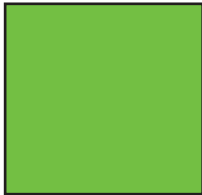



001
BLK/WHT

ARMOUR FUSE

					
WHITE	BLACK	MIDNIGHT NAVY	UNIVERSITY RED	ROYAL	FOREST GREEN
					
TEAM KELLY GREEN	MAROON	CARDINAL	DARK ORANGE	STEELTOWN GOLD	TEAM VEGAS GOLD
					
PURPLE	SILVER GRAY	GRAPHITE	CAROLINA BLUE	CLEVELAND BROWN	TEXAS ORANGE
					
COASTAL TEAL	PINK	POISON	CAPRI	TAXI	BASEBALL GRAY
					
OCEAN STORM	TENNESSEE ORANGE	GRAYSTONE	MIAMI TEAL	SEA GLASS	POWDER KEG BLUE
					
ELECTRIC BLUE	GOLD RUSH	TROPIC PINK			

FLUORESCENTS
NOT CURRENTLY AVAILABLE IN TONAL
PRINTS OR ON GAMEDAY SELECT PRODUCT

			
YELLOW FLUORESCENT	PINK FLUORESCENT	GREEN FLUORESCENT	ORANGE FLUORESCENT

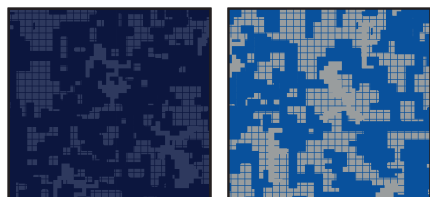
HEATHER COLOR OFFERING

Swatches available through your ArmourFuse business Customer Service Rep

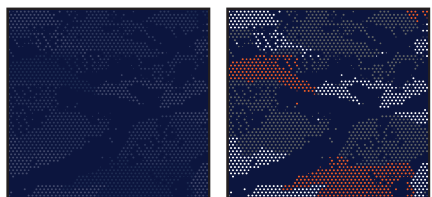


ARMOUR FUSE

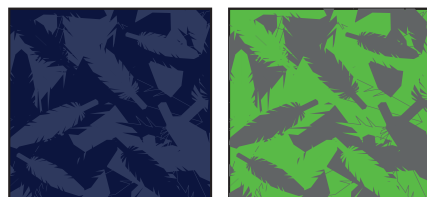
Prints available in all ArmourFuse colors. (Fluorescents not currently available in tonal prints)



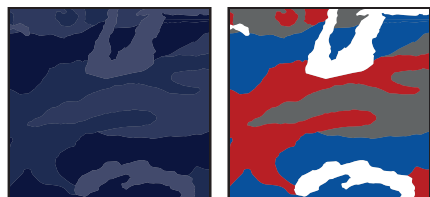
DIGITAL CAMO



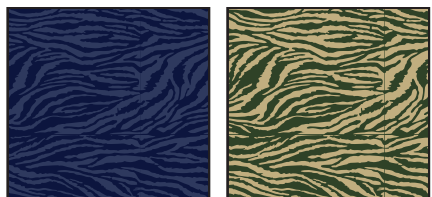
PIXEL CAMO



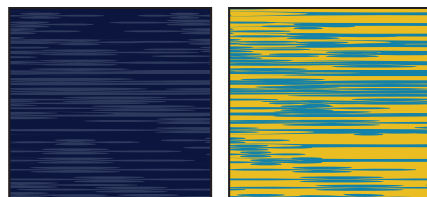
WINGS



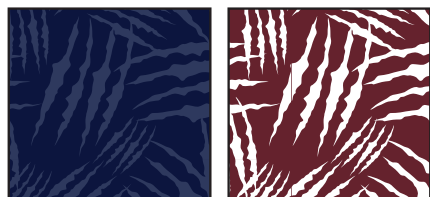
WOODLAND CAMO



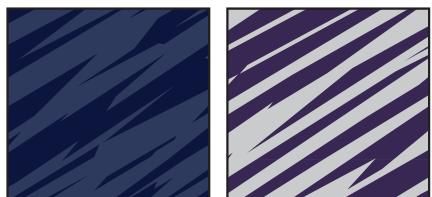
BENGAL



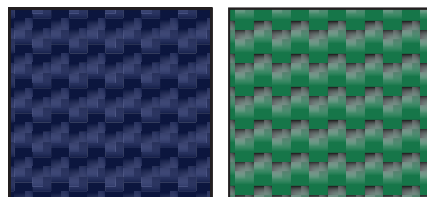
BLUR



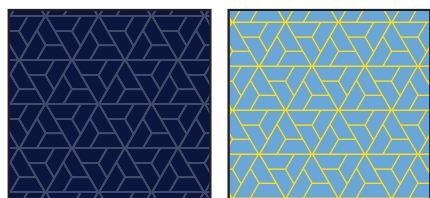
CLAW



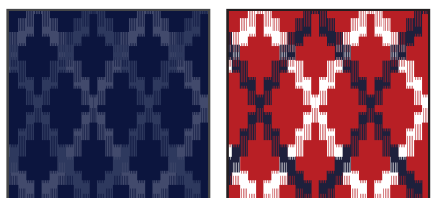
SPLINTER



CARBON WEAVE



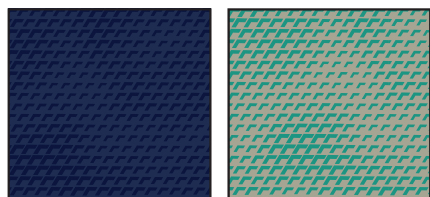
RAZOR



TOTEM

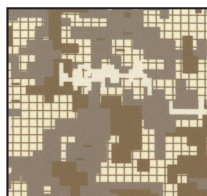


TREAD

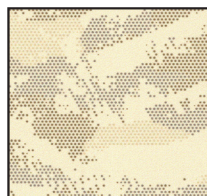


SCALE

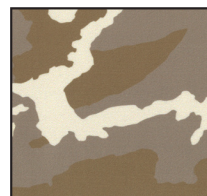
DESERT CAMO
LOCKED COLOR COMBINATIONS,
CANNOT BE ALTERED



DESERT
DIGITAL CAMO



DESERT
PIXEL CAMO



DESERT
WOODLAND CAMO

FONT OPTIONS

BADGER

ABCDEFGHIJKLMNOPQRSTUVWXYZ
0123456789

COMBINE

ABCDEFGHIJKLMNOPQRSTUVWXYZ
0123456789

BEARCAT

ABCDEFGHIJKLMNOPQRSTUVWXYZ
0123456789

CADET

ABCDEFGHIJKLMNOPQRSTUVWXYZ
0123456789

HIGHLIGHT

ABCDEFGHIJKLMNOPQRSTUVWXYZ
0123456789

TERRAFONT

ABCDEFGHIJKLMNOPQRSTUVWXYZ
0123456789

PREMIER

ABCDEFGHIJKLMNOPQRSTUVWXYZ
0123456789

TIFFANY

ABCDEFGHIJKLMNOPQRSTUVWXYZ
0123456789

FULL BLOCK

ABCDEFGHIJKLMNOPQRSTUVWXYZ
0123456789

UNDENIABLE

ABCDEFGHIJKLMNOPQRSTUVWXYZ
0123456789

FALCON

ABCDEFGHIJKLMNOPQRSTUVWXYZ
0123456789

PLAIN BLOCK

ABCDEFGHIJKLMNOPQRSTUVWXYZ

ATHLETIC SCRIPT

ABCDEFGHIJKLMNOPQRSTUVWXYZ
abcdefghijklmnopqrstuvwxyz

CLASSIC SCRIPT

ABCDEFGHIJKLMNOPQRSTUVWXYZ
abcdefghijklmnopqrstuvwxyz

NOTE:

- Gameday Select Package Pricing now includes all of the above listed fonts
- Dropped fonts available for fill-in orders only

STOCK DECORATION OPTIONS

SCREEN PRINT	ONE COLOR	TWO COLORS
Team Name	\$5.00	\$10.00
Team Mascot/Logo	\$5.00	\$10.00
Front + Back Numbers	\$10.00	\$15.00

TWILL	ONE COLOR	TWO COLORS
Team Name	\$20.00	\$25.00
Front + Back Numbers	\$25.00	\$30.00
Player Names	\$20.00	
ArmourFuse Twill Patch (Max 3"x3")	\$10.00	\$10.00

EMBROIDERY	ONE COLOR	TWO COLORS
Team Name (up to 2")	\$10.00	\$10.00
see page 32 for Embroidered Mascot/Logo pricing		

ADDITIONAL STOCK OPTIONS & NOTES

- Player Numbers Per Location = 1/2 of above
- "Front + Back Numbers" pricing
- Player Name Directly On Jersey Only (No Nameplates)
- ArmourFuse Twill = Twill Pricing +\$10
- Add Tail to Script Font Twill Team Name +\$10
- Add Embroidery to Twill Tail +\$10
- Non-Stock designs and lettering may require additional charge at Under Armour's discretion (call for quote)

LETTERING ARRANGEMENTS

STRAIGHT

ARCHED

BRIDGED

VERTICAL ARCH

Athletic Script

Classic Script

ADDITIONAL LENGTH OPTIONS (ARMOURFUSE ONLY - FREE OF CHARGE)

BASEBALL/SOFTBALL

TYPE	ADJUSTMENT	CODE
JERSEYS	Add 2" body length	UIX2BDY
	Add 4" body length	UIX4BDY

FOOTBALL

TYPE	ADJUSTMENT	CODE
JERSEYS	Shorten to waist length	
PANTS	Add 2" to inseam length	UIX2INS

LACROSSE/ FIELD HOCKEY

TYPE	ADJUSTMENT	CODE
JERSEYS	Add 2" body length	UIX2BDY
SHORTS	Subtract 1" from inseam	UISHTN1
	Subtract 2" from inseam	UISHTN2
	Add 1" to inseam length	UIXIINS
	Add 2" to inseam length	UIX2INS
KILTS	Add 1" to inseam length	UIXIINS
	Add 2" to inseam length	UIX2INS

BASKETBALL

TYPE	ADJUSTMENT	CODE
JERSEYS	Add 2" body length	UIX2BDY
	Add 4" body length	UIX4BDY
	Add 6" body length	UIX6BDY
SHORTS	Subtract 1" from inseam	UISHTN1
	Add 1" to inseam length	UIXIINS
	Add 2" to inseam length	UIX2INS
	Add 3" to inseam length	UIX3INS
SHOOTING SHIRTS	Add 2" body, 1" sleeve	UIX2B1S
	Add 4" body, 2" sleeve	UIX4B2S
	Add 6" body, 3" sleeve	UIX6B3S

SOCCER

TYPE	ADJUSTMENT	CODE
JERSEYS	Add 2" body length	UIX2BDY
SHORTS	Subtract 1" from inseam	UISHTN1
	Subtract 2" from inseam	UISHTN2
	Add 1" to inseam length	UIXIINS
	Add 2" to inseam length	UIX2INS

TRACK & FIELD

TYPE	ADJUSTMENT	CODE
JERSEYS	Add 2" body length	UIX2BDY
LOOSE SHORTS*	Subtract 1" from inseam	UISHTN1
	Add 1" to inseam length	UIXIINS

*UIS2M & UIS2W ONLY

TRAINING

TYPE	ADJUSTMENT	CODE
JERSEYS	Add 2" body length	UIX2BDY
	Add 4" body length	UIX4BDY
	Add 6" body length	UIX6BDY
SHORTS	Subtract 1" from inseam	UISHTN1
	Subtract 2" from inseam	UISHTN2
	Add 1" to inseam length	UIXIINS
	Add 2" to inseam length	UIX2INS
	Add 3" to inseam length	UIX3INS

VOLLEYBALL

TYPE	ADJUSTMENT	CODE
JERSEYS	Add 2" body length	UIX2BDY
SHORTS	Subtract 1" from inseam	UISHTN1
	Subtract 2" from inseam	UISHTN2

EMBROIDERY

MASCOTS (STOCK ONLY)

LIST PRICE

Mascot	\$11.00
Mascot with One Line	\$12.00
Mascot with Two Lines	\$13.00
American Flag	\$11.00
Small/Homeplate	\$6.00

DIGITIZING (STOCK AND ARMOURFUSE ONLY)

LIST PRICE

Stock Designs and Lettering	\$180.00
Custom Logos	Call for Quote

- Prices are based upon size of designs, not the number of colors. Prices are subject to change if design exceeds specifications.
- Dimensions are maximum space - unless specifically noted best judgement will be used.
- Letter styles are available horizontal or arched.
- No digitizing charge for team names.

- Flag size up to 2" by 3" (bigger area - call for quote)
- Minimum order charges apply for embroidery
- All designs require an additional digitizing charge, except:
 - 1) Digitized designs supplied on a disk
 - 2) Digitized design is a re-order of an existing design

STANDARD SLEEVE PRINT STRIPES

*OPTIONS - Code numbers listed below stripe patterns

*Stripes may be adjusted to fit smaller garments and not measure exactly as shown.



01



02



03



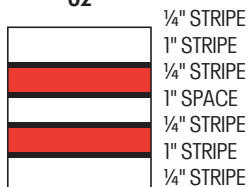
04



05



06



07



08



09

ARMOURFUSE® GRAPHIC OPTIONS



TEAM TRAINING



STYLE NAME	GENDER	STYLE#	UA ECLIPSE	UA VITAL	SCOUT
HOODY	MEN'S	UJGSLHM	X	X	X
	WOMEN'S	UJGSLHW	X	X	X
	YOUTH	UJGSLHY	X	X	X
1/4 ZIP	MEN'S	UJGQZPM	X	X	X
	WOMEN'S	UJGHZPW	X	X	X
LOOSE SHORTSLEEVE	MEN'S	UJGSIM	X	X	X
	WOMEN'S	UJGSIW	X	X	X
	YOUTH	UJGSIY	X	X	X
LOOSE LONGSLEEVE	MEN'S	UJGILIM	X	X	X
	WOMEN'S	UJGILW	X	X	X
	YOUTH	UJGILY	X	X	X
COMPRESSION SLEEVELESS	MEN'S	UJGCBL	X	X	X
COMPRESSION SHORTSLEEVE	MEN'S	UJGTBL	X	X	X
COMPRESSION 1/2 SLEEVE	MEN'S	UJGHBL	X	X	X
COMPRESSION LONGSLEEVE	MEN'S	UJGCLS	X	X	X
POCKETED SHORT	MEN'S	UJGS2PM	X	X	X
	WOMEN'S	UJGS2PW	X	X	X
	YOUTH	UJGS2PY	X	X	X
NON-POCKETED SHORT	MEN'S	UJGS2M	X	X	X
	WOMEN'S	UJGS2W	X	X	X
	YOUTH	UJGS2Y	X	X	X

UNIFORM CARE INSTRUCTIONS

To enhance the appearance and extend the life of your uniforms, Under Armour recommends that you follow these cleaning and storing procedures:

DO NOT DRY CLEAN

DO NOT WASH IN HOT WATER

DO NOT USE CHLORINE BLEACH

DO NOT USE FABRIC SOFTENER

DO NOT WASH WHITES AND COLORS TOGETHER

DO NOT OVERLOAD THE WASHING MACHINE

DO NOT MACHINE DRY ON HIGH HEAT

DO NOT LEAVE WET OR DAMP GARMENTS IN YOUR TRAVEL BAG, IN A PILE WITH OTHER CLOTHING OR IN WASHING MACHINE

- Pre wash uniform prior to use.
- Uniforms should always be laundered immediately after wearing. However, if this is not possible, rinse garments and hang individually on rust-proof hangers. (Moisture may cause color migration of acid dyes so we advise separating wet or damp uniforms.)
- Belts and any other contrasting color items should be washed separately from the garment.
- It is always advisable to test wash a single uniform according to directions before washing an entire load.
- Wash and rinse all garments in warm water (approx. 110°) with mild detergent. Remove promptly after wash cycle.
- For optimum results, hang garments (especially those with elastane) to dry. If you cannot hang dry, machine dry on the lowest setting. Turn jerseys inside out before machine drying. Remove items from dryer immediately upon completion of the cycle. (Excessive heat can cause fabric shrinkage, discoloration, and cracking and peeling of vinyl plastisol lettering inks.)
- Make sure uniforms are completely dry before storing. Store in a dry area to prevent mildew. Protect them from sunlight and fluorescent light to prevent yellowing.

PLEASE NOTE: Under Armour will not be responsible for uniforms that are damaged due to improper care and maintenance. Failure to follow our specified care instructions will void all guarantees.

UNIFORM FILL-IN LIFECYCLE

LAST SHOWN IN CATALOG	LAST FILL-IN SEASON	LAST FILL-IN SHIP
SP'16	SP'19	6/15/2019
FA'16	FA'19	12/15/2019
WI'16	WI'19	3/15/2020
SP'17	SP'20	6/15/2020
FA'17	FA'20	12/15/2020
WI'17	WI'20	3/15/2021
SP'18	SP'21	6/15/2021
FA'18	FA'21	12/15/2021
WI'18	WI'21	3/15/2022
SP'19	SP'22	6/15/2022
FA'19	FA'22	12/15/2022
WI'19	WI'22	3/15/2023
SP'20	SP'23	6/15/2023
FA'20	FA'23	12/15/2023
WI'20	WI'23	3/15/2024
SP'21	SP'24	6/15/2024
FA'21	FA'24	12/15/2024
WI'21	WI'24	3/15/2025


GAMEDAY SELECT TEAM UNIFORMS
 ORDERING INFORMATION AND CUSTOMER SERVICE:
 1-800-474-6118
www.uacustomuniforms.com


UA NEXT
 ORDERING INFORMATION AND CUSTOMER SERVICE:
 1-800-594-9082
www.underarmourteamuniforms.com


ARMOURFUSE™ TEAM UNIFORMS
 ORDERING INFORMATION AND CUSTOMER SERVICE:
 1-800-594-9082
www.underarmourteamuniforms.com


STOCK TEAM UNIFORMS
 ORDERING INFORMATION AND CUSTOMER SERVICE:
 1-800-594-9082
www.underarmourteamuniforms.com

ORDERING INFORMATION

Guarantee:

The materials and workmanship of our garments are guaranteed when given fair treatment and used under normal conditions.

Color Matching:

Scientifically, it is not possible to achieve a perfect color match from one dye lot to another. Therefore, we cannot guarantee a perfect match from order to order or from one fabric to another.

Color Abbreviation Key:

The following abbreviations may be used when ordering merchandise.

BG Baseball Gray	EB Electric Blue	PI Pink	SI Silver Grey
BK Black	GP Graphite	PK Powderkeg Blue	TA Taxi
BR Brown	KE Team Kelly Green	PO Poison	TE Teal
CA Cardinal	LG Steeltown Gold	PU Purple	TO Texas Orange
CB Carolina Blue	MA Maroon	RO Royal	TP Tropic Pink
CP Capri	NA Midnight Navy	RU Gold Rush	VG Team Vegas Gold
DG Forest Green	OR Dark Orange	SC University Red	WH White

Price Policy:

All catalog prices are list or suggested retail. Prices are subject to change without notice. Merchandise will be invoiced based on the prices in effect at the time the order is placed.

Terms:

Prices are FOB shipping point. Payment is due Net 30.

Minimum Order Charges:

A handling charge of \$10.00 will be added to orders of less than \$150.00 list.

Custom and GamedaySelect fill-in minimum order is 6 units per style and color. A 100% surcharge will be applied to orders of 1-2 units, and a 50% surcharge for orders of 3-5 units.

Lettered Orders for COD Shipment:

A 50% deposit is required on all lettered orders calling for COD shipment.

Delivery:

Shipments will always be made by the fastest, least expensive means possible. The customer will assume any additional expense required to expedite delivery.

Order Cancellations:

Cancellations must be received at least one day prior to the ship date. Special order garments cannot be cancelled after they have been cut. Lettered garments cannot be cancelled after they have been printed or sewn.

Returns:

Claims must be reported to our office within 10 working days of merchandise receipt. Returns cannot be made after 30 days of the invoice date. All returns for plain merchandise must be clearly marked with an authorization number or label obtained from our office. All returns for lettered merchandise must be clearly marked "LETTERING." When requesting an authorization label, the following information is required: Reason for return, Invoice #, Style #, Color, Size/Quantity. An authorization label will then be sent to you to prepare the merchandise for return shipment. We reserve the right to repair, replace or issue credit for any merchandise returned. A 15% restocking fee and shipping charges will be charged for merchandise returned that is either not damaged or the damage is determined not to be our fault. All worn garments must be properly laundered prior to return or they will not be accepted.

All custom and custom-stock uniforms may not be returned under any circumstances if delivered properly.

Shortages:

All claims must be made within 10 days of the invoice date.

New Accounts:

All new accounts must be opened through your local sales representative. New accounts that do not have a Dunn and Bradstreet rating will be shipped COD until a credit line has been established.

Samples:

Samples will be entered and billed as a regular order. Samples cannot be returned without prior approval from our office.

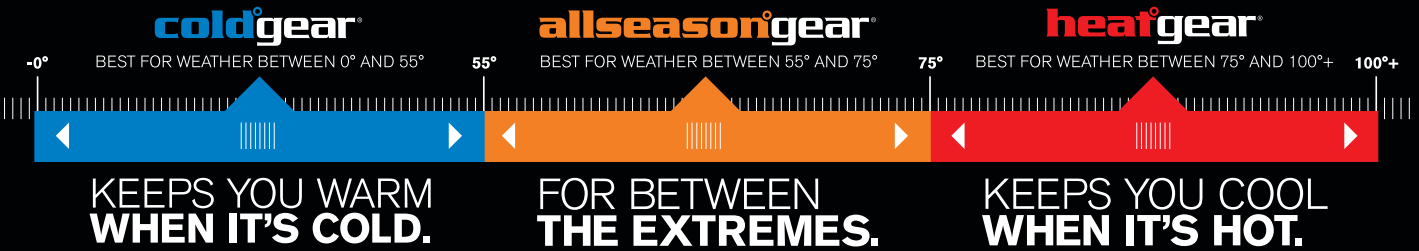
Imprint Orders:

All imprint orders must be emailed, mailed or faxed in with detailed instructions on UA order forms. Imprint orders will not be taken by phone. Once garments have been lettered, the order cannot be cancelled or returned.

Under Armour will not be responsible for any items not checked for order accuracy or sizing before being sent to a printer / screener. We will not be responsible for shrinkage, defects, or damages caused during the imprinting of our garments by sources other than our own lettering department. Screenprinting sublimated uniforms can cause color migration. We do not recommend screenprinting on sublimated garments.

Photography is the property of Under Armour and is not to be used without written authorization.

GEARLINES —



PERFORMANCE DNA —

Every Under Armour® product is doing something for you: it's making you better. Following are the core pieces of DNA that deliver on this promise. The building blocks of performance.

THREADBORNE

Dries faster to keep you comfortable.

STORM

Water repellant performance fabric.

STRATEGIC VENTILATION

Strategic venting built into garment at key points where the body dumps heat. Keeps the athlete cool in hot conditions.

4-WAY STRETCH

Lightweight fabrics with built-in 4-way stretch improve mobility and accelerate dry time.

MOISTURE TRANSPORT

Wicks moisture from the body, keeping the athlete dry.

ODOR CONTROL

Fabric treated with antimicrobial agents.

UPF

Ultraviolet protection shields your skin from the sun's harmful rays and inhibits premature aging.

360° REFLECTIVITY

The high visibility solution for training safely during low light conditions.

WIND RESISTANT

Blocks wind from penetrating to the body. Helps regulate core body temperature.

ARMOURGRIP™

Locks gear in place using a tactified compound that prevents slippage.

FLATLOCK SEAMING

Specialized seaming that feels smooth against the skin and prevents chafing.

COLOR CODE CHART —

COLOR	CODE	COLOR	CODE	COLOR	CODE
BLACK	BLK 001	FOREST GREEN	GRN 301	VEGAS GOLD	VGD 710
STEALTH GRAY	STY 008	TEAM KELLY GREEN	TKG 305	TEAM VEGAS GOLD	TVG 715
ANTHRACITE	ATH 016	CLASSIC GREEN	CGN 312	COASTAL TEAL	CTL 722
CHARCOAL	CHC 019	POISON	POI 327	HIGH-VIS YELLOW	HVY 731
TRUE GRAY HEATHER	TRG 025	KELLY GREEN	KGR 350	STEELTOWN GOLD	SGD 750
STEEL	STL 035	CELERY	CEL 367	SUNBLEACHED	SNB 771
CLOUD GRAY	CGY 038	HYPER GREEN	HVG 389	TAXI	TXI 790
GRAPHITE	GPH 040	ROYAL	RYL 400	GOLD RUSH	GOR 795
ALUMINUM	ALU 052	MIDNIGHT NAVY	MDN 410	ORANGE	ORG 800
SILVER	SLV 055	CAPRI	CPR 419	PINK CHROMA	PKC 806
BASEBALL GRAY	BBG 075	ELECTRIC BLUE	ELB 428	BRILLIANCE	BRL 819
RHINO GRAY	RHG 076	CAROLINA BLUE	CBL 475	BLAZE ORANGE	BLZ 825
CARBON HEATHER	CBH 090	PURPLE	PUR 500	FLAWLESS	FLW 834
METALLIC SILVER	MSV 099	RED	RED 600	PERFECTION	PFT 853
WHITE	WHT 100	MAROON	MAR 609	DARK ORANGE	DKO 860
CLEVELAND BROWN	BRN 200	CARDINAL	CRD 625	VIVID	VIV 863
OATMEAL HEATHER	OAH 250	CRIMSON	CRI 630	TEXAS ORANGE	TXO 875
DUNE	DUN 261	CERISE	CER 653	TOXIC	TOX 879
CAMEL	CML 263	TROPIC PINK	TPK 654	GAMMA GREEN	GAG 893
STONE	STN 279	NEO PULSE	NPU 678	ASSORTED	AST 967
SANDSTORM	SDS 280	TRUE PINK	TRP 695	POWDERKEG BLUE	PKB 992
DESERT SAND	DES 290				

SIZING AND FIT —

Under Armour® Performance has already compensated in the design of its apparel to be consistent with normal (XS–3XL) sizing. Please order the size you would wear in a non-performance T-shirt or pant. All sizes are in inches.

MEN'S	SM	MD	LG	XL	XXL	3XL
Chest	34-36	38-40	42-44	46-48	50-52	54-56
Waist	28-29	30-32	34-36	38-40	42-44	46-48

WOMEN'S	XS	SM	MD	LG	XL	XXL
	0-2	4-6	8-10	12-14	16	18
Bust	31-33	33 ½-35 ½	36-38	38 ½-40 ½	41-43	43+
Waist	23-25	25 ½-27 ½	28-30	30 ½-32 ½	33-35	35+
Hip	33-35	35 ½-37 ½	38-40	40 ½-42 ½	43-45	45+

BOYS	YXS	YSM		YMD		YLG		YXL	
	6	7	8	10	12	14	16	18	20
Chest	24	25 ½	26 ½	27 ½	28 ½	30 ½	32	33 ½	35
Waist	23	23 ½	24 ½	25 ½	26 ½	28	29 ½	31	32 ½
Hip	25	26 ½	27 ¾	29	30 ½	32	33 ½	35	36 ½

GIRLS	YXS		YSM		YMD		YLG		YXL	
	6	6X	7	8	10	12	14	16	18	20
Chest	24	24 ¾	26	27	28 ½	30	31 ½	33 ½	35 ½	37 ½
Waist	23	23 ½	23 ½	24 ¼	25	26	28	30	32	34
Hip	25	25 ¾	27 ½	28 ½	30	32	34	36	38	40



ULTRA-TIGHT, 'SECOND-SKIN' FIT

These products fit snugly to the body providing a close, lean, and supportive fit.



GENEROUS CUT, OVERSIZED FIT

Generous cut product, providing full range of motion, and a full, loose fit.



CONTOURED TO THE BODY

Designed to be very close to the body without the constriction of compression.

CONTACT CENTER

Corporate Headquarters
1020 Hull Street
Baltimore, MD 21230

Under Armour® Apparel Returns
1010 Swan Creek Drive
Baltimore, MD 21226

UA Footwear/Accessories Returns
2510 W. Walnut Avenue
Rialto, CA 92376

ALL TEAM SPORTS ORDERS AND QUESTIONS PLEASE USE THE FOLLOWING:

1.888.828.1547

CORPORATE OFFICE HOURS OF OPERATION

Monday through Friday, 8:30am – 7:00pm, EST.

UNDER ARMOUR® B2B - ONLINE ORDERING

armourhouse.underarmour.com

- 24/7 access to check inventory and place orders
- Ability to track orders and shipments
- Priority product allocation
- Faster processing time

UNDER ARMOUR® B2B - SUPPORT

B2B_support@underarmour.com

UNDER ARMOUR® RETURN POLICY

Under Armour® stands behind its gear and EXPECTS nothing less than perfection. If you have received a defective product, an incorrect size, or an incorrect order, please contact us immediately for a return authorization number so that we can quickly process your return and ensure your satisfaction.

ALL RETURNS MUST BE COMPLETED WITHIN 30 DAYS OF RECEIPT AND MUST BE IN REASONABLE CONDITION. ALL RETURNS MUST HAVE THE RA# CLEARLY MARKED ON THE CARTON. ALL RETURNS ARE SUBJECT TO A 15% RE-STOCKING FEE.

Should you need to return or exchange an item, you MUST include your RA#, a copy of your invoice, and an explanation in writing as to why you are returning the item. Send your return to the marked address on your pack list. If you are exchanging merchandise, you are responsible for the cost of returning the product. Original shipping costs are non-refundable. All returned merchandise must be received in new, resalable condition.

UNDER ARMOUR® CANCELLATION POLICY

Any request for cancellation of an order for UA products must be made, in writing, through the customer's UA Sales Representative. A request to cancel an order must be made more than 30 days before the customer's original desired ship date. All cancellations are subject to UA approval.

ALL PRICES SET FORTH HEREIN ARE SUBJECT TO CHANGE WITHOUT NOTICE.

© 2020 Under Armour®. All rights reserved. All trademarks, images, photographs, logos, and graphics are owned or controlled by Under Armour®.

Confidential and business proprietary information for internal Under Armour®, Inc. use only. Reproduction is strictly prohibited.

WEST

PAT BAUER
SR. REGIONAL MANAGER
410.299.3798
pbauer@underarmour.com
WA // OR // MT // ID // AK

JEFF UTTZ
626.484.3496
jeffu@underarmour.com
Southern & Central CA //
Southern NV // HI

MARC GUSTAFSON
303.828.7468
mgustafson@underarmour.com
UT // CO // WY //
Western KS // Western NE

MATT VALENTINE
415.307.1290
mvalentine@underarmour.com
Northern CA // NV

DAN LAABES
602.882.7241
dlaabes@underarmour.com
AZ // NM // West TX

GREG ROMINE
719.238.9244
gromine@underarmour.com
North TX (Dallas) // OK // Western AR

MICHAEL SMITH
713.471.5378
michael.smith@underarmour.com
South TX

CENTRAL

BROCK PAALHAR
SR. REGIONAL MANAGER
573.808.1010
bpaalhar@underarmour.com
IA // MN // ND // SD

TONY DONOFRIO
419.356.9742
tonyd@underarmour.com
Northern IN // Northern OH // MI

FRANK WEBER
618.540.3955
fweber@underarmour.com
MO // Central & Eastern NE //
Southern IL // Eastern KS

JOHN WACHTEL
513.314.4024
jwachtel@underarmour.com
Southern IN // Southern OH // KY
Eastern TN // WV

MARC CALABRETTA
443.655.6768
mcalabretta@underarmour.com
Northern IL // IA // WI

MONTE GIBBS
662.801.3039
mgibbs@underarmour.com
Central & Western TN // Panhandle FL //
LA // AL // MS // Eastern AR

EAST

MIKE LOMAS
SR. REGIONAL MANAGER
610.999.2304
mlomas@underarmour.com
PA

DAN WILLIAMS
352.672.1676
dwilliams@underarmour.com
FL (except Panhandle)

ALEX BRUEGGEMANN
410.652.4337
abrueggemann@underarmour.com
GA // SC // NC

GARY POWERS
410.746.3790
gpowers@underarmour.com
MD // VA // Washington DC

FRANK NUNAN
484.576.9777
fnunan@underarmour.com
DE // NJ // Philadelphia area

BOB BARTLETT
315.380.6505
bobb@underarmour.com
NY // Lax Specialty

JAY KELLEHER
443.615.0462
jkelleher@underarmour.com
New England

COLLEGIATE

TOMMY AMICO
951.808.0367
tamico@underarmour.com
WEST

TODD LOCKLEAR
410.454.6572
tlocklear@underarmour.com
EAST

LICENSEES

FOUNDER SPORT GROUP
Stock & Armourfuse Uniforms
www.underarmourteamuniforms.com
800.594.9082
UASstatus@foundersportgroup.com



TEL: 1.888.828.1547 / B2B: ARMOURHOUSE.UNDERARMOUR.COM

COLLEGIATE

TEAMSPO RTS COLLEGIATE / TEAMSPO RTS.COLLEGIATE@UNDERARMOUR.COM

CENTRAL

TEAM SPORTS MW / TEAMSPORTSMW@UNDERARMOUR.COM

EAST

TEAM SPORTS SE / TEAMSPORTSSE@UNDERARMOUR.COM
TEAM SPORTS NE / TEAMSPORTSNE@UNDERARMOUR.COM

WEST

TEAM SPORTS WC / TEAMSPORTSWC@UNDERARMOUR.COM
TEAM SPORTS SW / TEAMSPORTSSW@UNDERARMOUR.COM